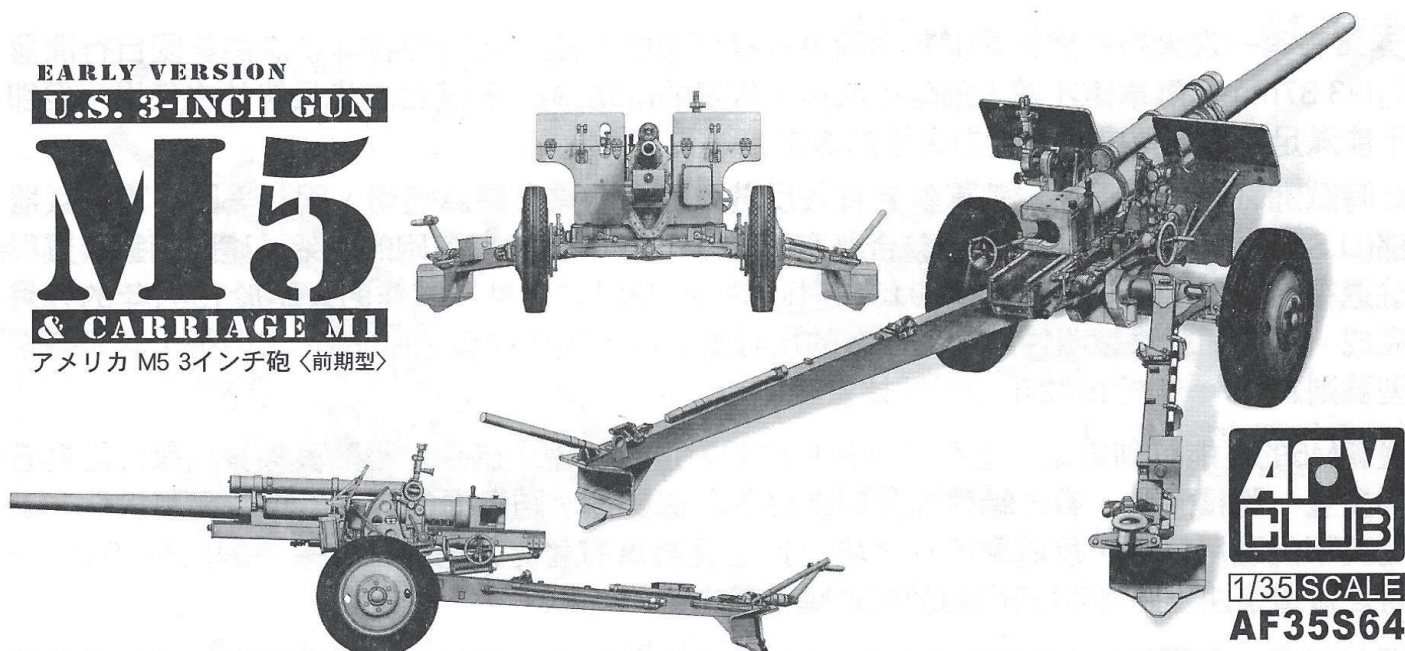


EARLY VERSION
U.S. 3-INCH GUN

M5

& CARRIAGE M1

アメリカ M5 3インチ砲〈前期型〉



The US Army mainly used foreign cannons in WWI, and it was not until 1940 that the American developed M3 37mm anti-tank saw services in the US Army. Lightened M3 anti-tank guns were suitable for infantry, yet the artillery were looking for heavier guns.

In Europe, the war reached its peak, which made the US Army to demand more effective anti-tank weapons. Therefore Army Ordnance Corps integrated existing resources - using 105 mm howitzer carriage, breechblock assembly and recoil system, adopting T9 3-inch barrel (converted from M1918 anti-aircraft gun). The prototype was introduced on September 1941, and the result was to Army's satisfaction. The gun was officially designated as M5, and the carriage was designated as M1. Mass production was commenced in December 1942.

To the infantry, M5 was too bulky and too heavy. And the Tank destroyers favoured tanks with better maneuverability and defensive capabilities. From experiences on North Africa theaters, anti-tank guns own better camouflage effects than tank destroyers. Therefore it was decided that the M5 were issued to Tank Destroyers battalions from March 1943.

December 1943, the 805th Tank Destroyers Battalion saw combat in the Italian Campaign. On the 25th around Napoli, he 805th Battalion became the first unit to operate M5 in action.

第一次大戦中、外国製火砲を装備していたアメリカ陸軍は、1940年になり、自国で開発したM3 37mm対戦車砲を装備するに至った。軽量なM3 37mm対戦車砲は、歩兵部隊の使用には適していたが、砲兵部隊は、より強力な火砲を求めていた。

ヨーロッパでの戦火拡大による対戦車砲の需要の高まりを受け、米陸軍兵器科は、生産性向上のため既存の資材の統合を行った。105mm榴弾砲の砲架、閉鎖器、駐退復座機に、M1918高射砲のT9 3インチ砲身を組み合わせたのである。1941年9月に試作型が完成、テストの結果は満足すべきものであった。この砲はM5 3インチ砲として正式採用され、砲架はM1と型式名が定められ、1942年12月に量産が開始された。

歩兵部隊にとって、M5は大きいうえに重量があり、扱いづらいものだった。戦車駆逐部隊では、機動性と防御力の高い駆逐戦車が好まれていた。北アフリカ戦線での戦闘に於いて、対戦車砲は駆逐戦車よりも高いカモフラージュ効果があることを経験したことで、M5 3インチ砲は、1943年3月から、戦車駆逐大隊に配備されることが決定したのである。

1943年10月、イタリア戦線に投入された第805戦車駆逐大隊は、25日にナポリ近郊で戦闘に入り、同大隊はM5 3インチ砲を装備して初めて実戦を経験した部隊となった。

美軍在第一次大戰期間大量仰賴由國外採購而來的火砲，直到1940年初次由美國自行開發的M3 37mm反戰車砲才進入部隊中服役。輕量的M3反戰車砲適合在步兵單位中使用，但卻不能滿足砲兵單位中對更強力火砲的需求。

此時歐洲戰場戰事正酣，美軍對更有效反戰車武器的需求異為迫切，因此美國陸軍的兵器部(U.S. Army Ordnance Corps)整合既有的資源，將105mm榴彈砲的砲架、砲門閉鎖裝置與駐退復進機，搭載上改良自M1918高射砲的T9型3吋砲砲身，試作的火砲於1941年的九月完成。試驗的結果證明性能優於既有的反戰車火砲，因此賦與它M5的正式型號，該砲砲架型號則為M1，並於1942年12月開始量產。

儘管M5的性能得到肯定，但在陸軍各單位間對這款新型火砲卻並不熱衷。步兵單位認為它的重量、體積過大。戰車驅逐部隊則偏好更具機動性、防禦力的驅逐戰車。但基於北非戰場英軍的運用經驗，反戰車砲在戰場上比驅逐戰車有著更好的隱蔽效果。因此在1943年3月之後還是決定將M5陸續配備於戰車驅逐營之中。

同年10月，美軍第805戰車驅逐營的M5投入義大利戰場，25日在那不勒斯附近成為最初接戰的M5單位。

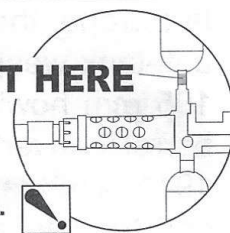
Illustration:圖示說明



因產品中有極精細的部件，請由標示處切除以避免損害零件。

Note: Cut off at here first to avoid damage.

CUT HERE



Method for applying decals:

1. Clean model surface with wet cloth. 2
2. Cut out of decal sheet and dip them in warm water for 15 seconds. 3
3. Place it on proper position on model. 4
4. Slide off base paper leaving decals on model with wet finger tip. 5
5. Move decals to exact position, push out excess water under decal with soft cotton cloth. 6
6. When decals get dry then complete.

水貼紙使用說明:

1. 將模型表面擦乾淨
2. 將貼紙剪下泡入溫水中浸泡約15秒
3. 將泡濕之貼紙取出置於欲貼處旁
4. 用指尖輕推貼紙表面使其滑出底紙
5. 將貼紙調整至適當位置並輕擦拭水份
6. 待其自然乾燥後即完成

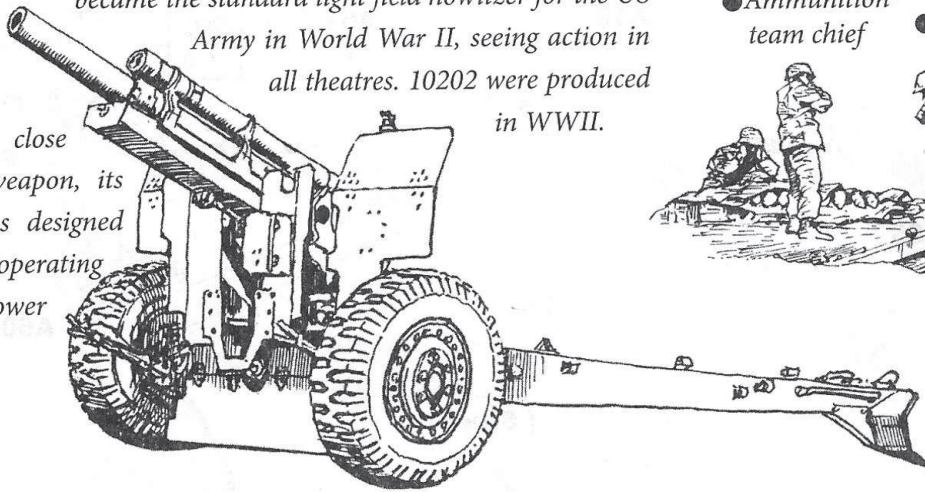
Color list: 塗料表

Color	Brand	Gunze Sangyo			Humbrol	Revell	Lifecolor
		Hobby Color	Mr.Color	Mr.Color Spray			
Olive drab(2)	橄欖綠	H78	C38	J38	66	46	UA106
Steel	黑鐵	H18	C28	J28	53	91	LC76
Wood brown	木棕	H37	C43		119		FS12
Brass	黃銅	H9	C9	J9	54	92	LC75
Khaki green	卡其綠	H80	C54				
Flat red	消光紅	H13			73		LC06
Flat white	消光白	H11	C62	J62	34	05	LC01

105mm Howitzer M2A1

● The howitzer was adopted by the US Army in 1939, became the standard light field howitzer for the US Army in World War II, seeing action in all theatres. 10202 were produced in WWII.

● Being a close support weapon, its shield was designed to protect operating soldier's lower portion.

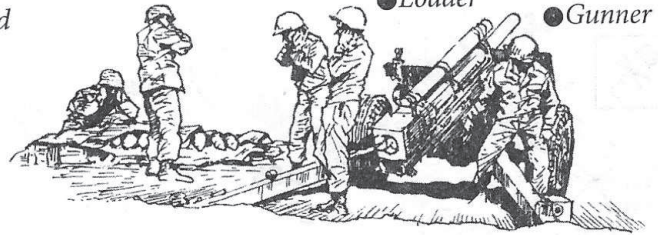


● Ammunition team chief

● Aimer

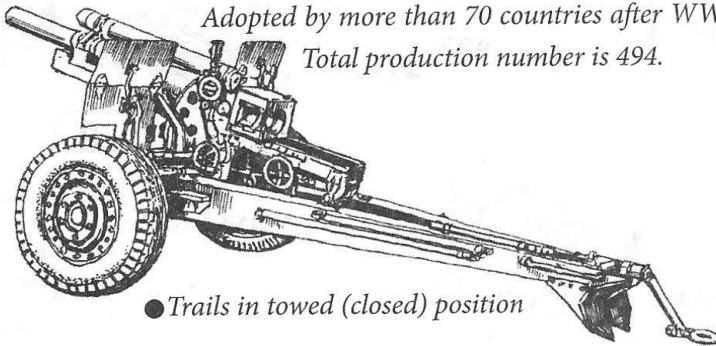
● Loader

● Gunner

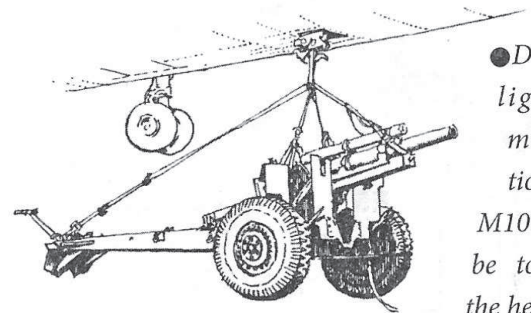


● 10 personnel, towed by a 2 1/2 ton truck

● M101A1 was modified (lightened) from M2A1. Adopted by more than 70 countries after WWII. Total production number is 494.

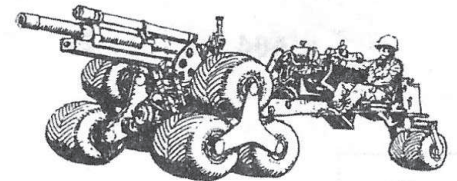
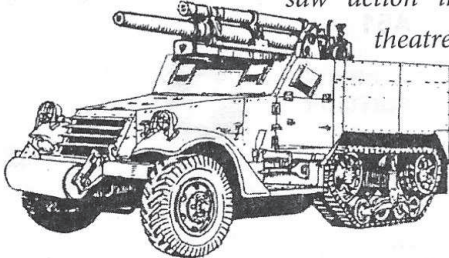


● Trails in towed (closed) position



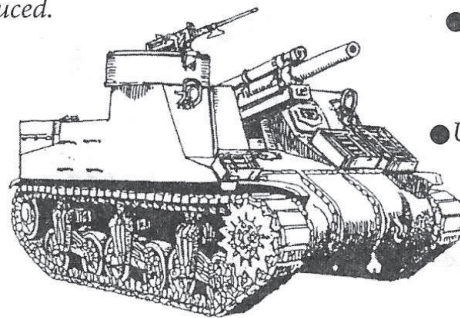
● Due to its lightened modification, the M101A1 can be towed by the helicopter.

● T19 self-propelled artillery vehicle, saw action in the North Africa theatre before M7 Priest was introduced.



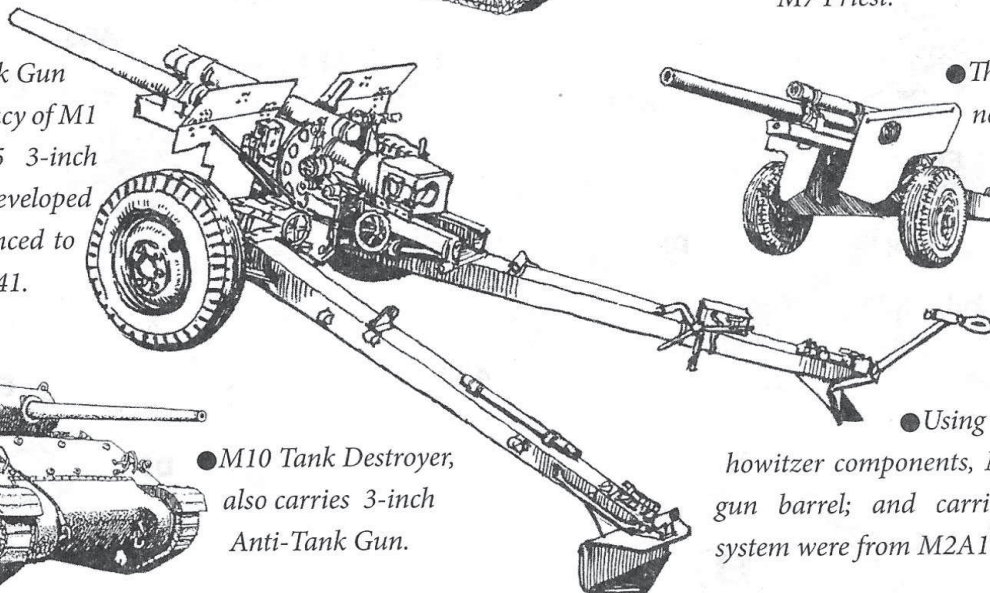
● A USMC experimental short-range self-propelled vehicle

● Using M3 chassis (later also M4A3) as the platform, adopting 105mm howitzer, the new self-propelled artillery vehicle was known as M7 Priest.

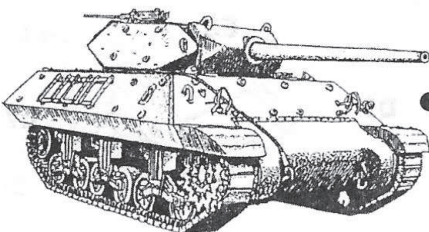


skin.ueda

● M5 3-inch Anti-Tank Gun
Realizing the inadequacy of M1 57mm gun, the M5 3-inch Anti-Tank Gun was developed in short time, commenced to produced by end of 1941.



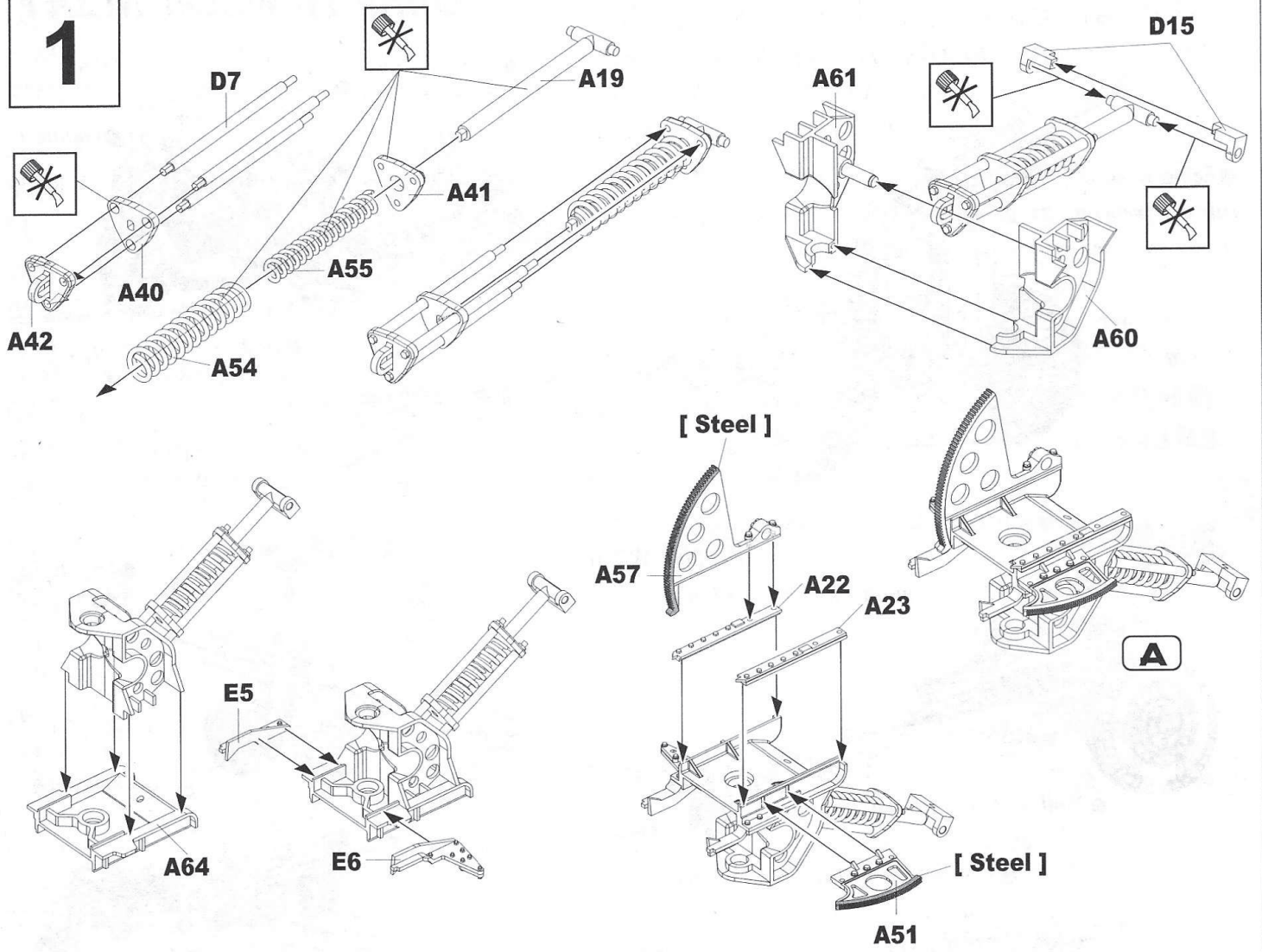
● The M5 adopted new M6 carriage.



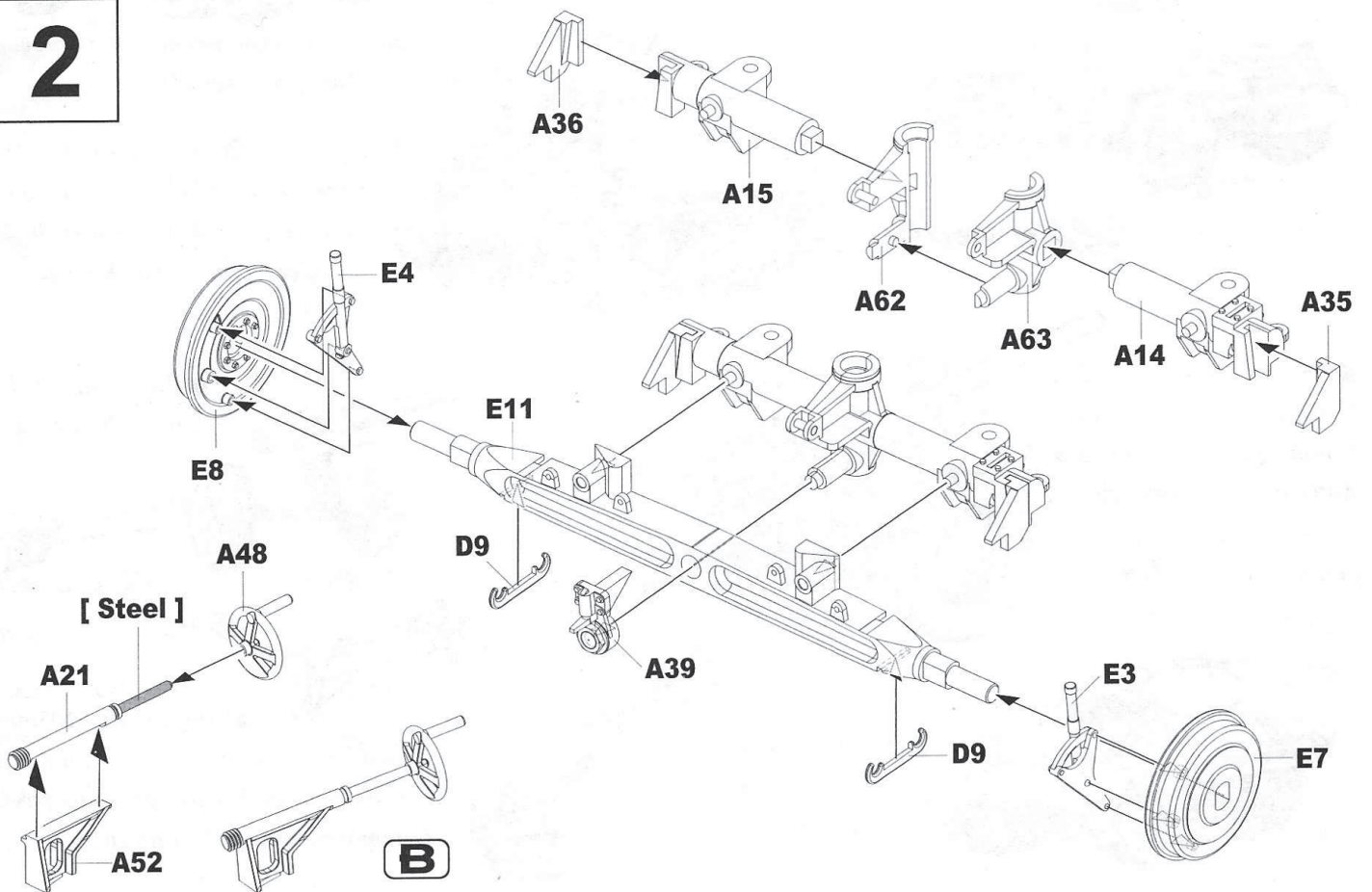
● M10 Tank Destroyer, also carries 3-inch Anti-Tank Gun.

● Using existing 105mm howitzer components, M3 anti-aircraft gun barrel; and carriage and recoil system were from M2A1 howitzer.

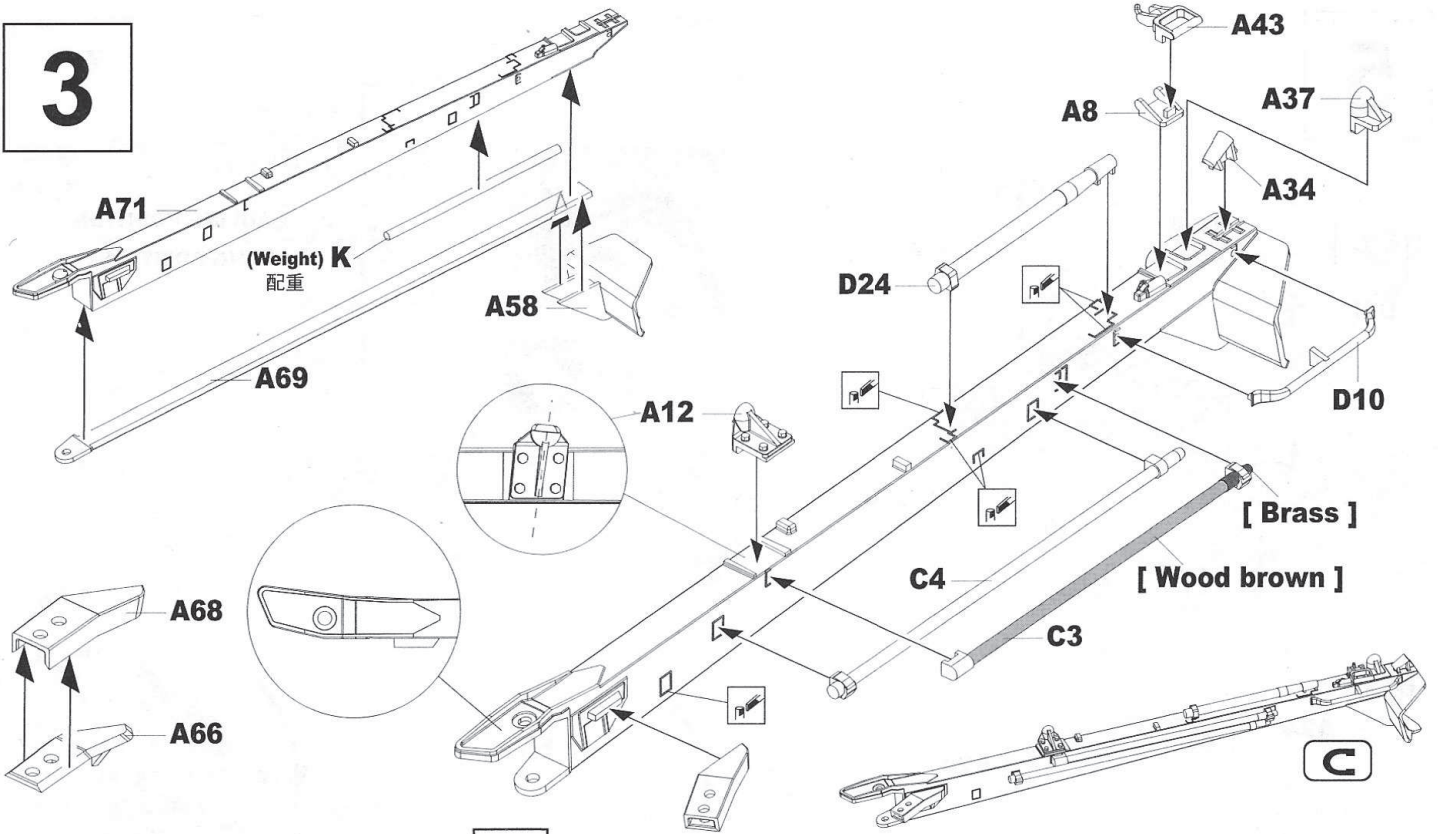
1



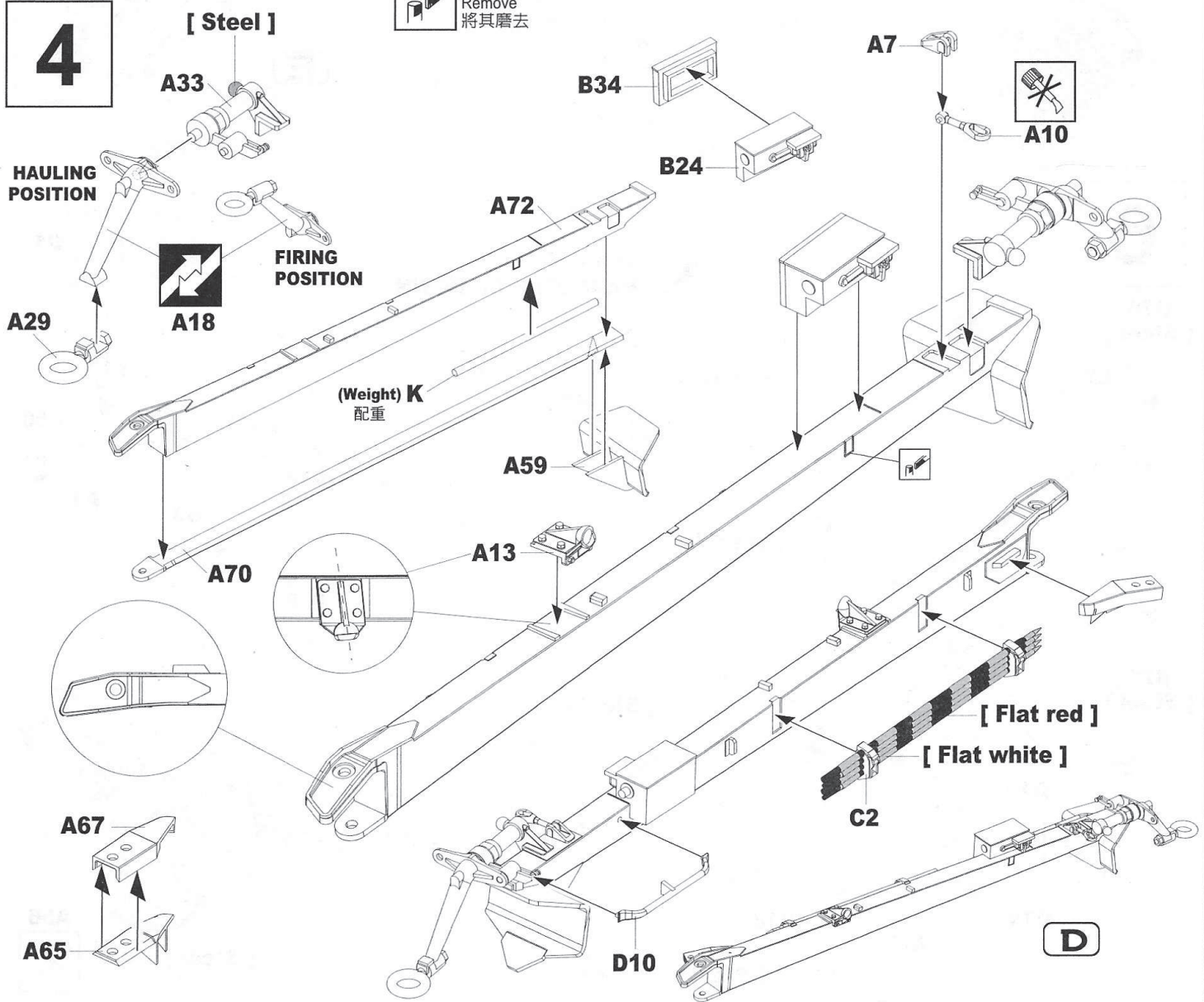
2



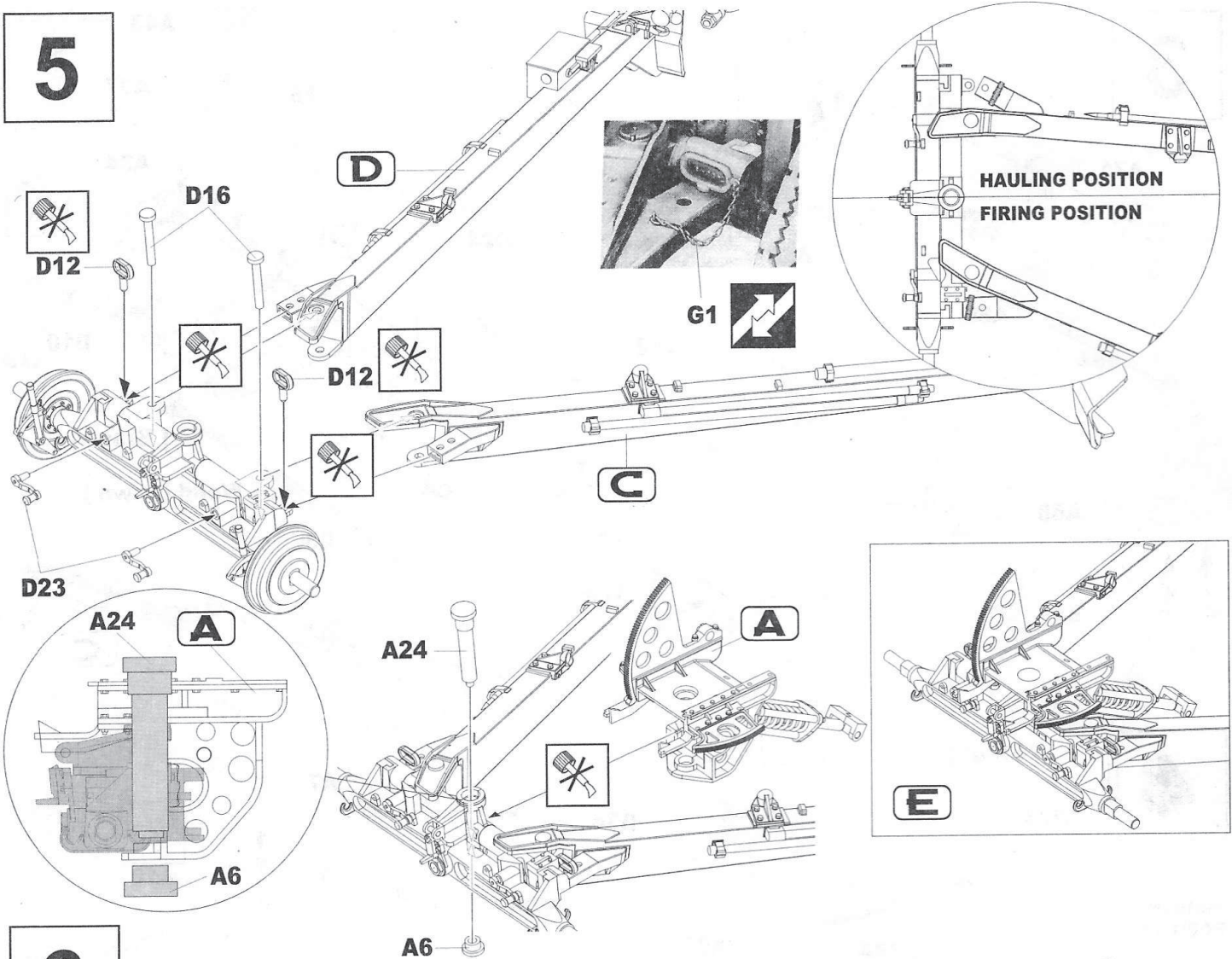
3



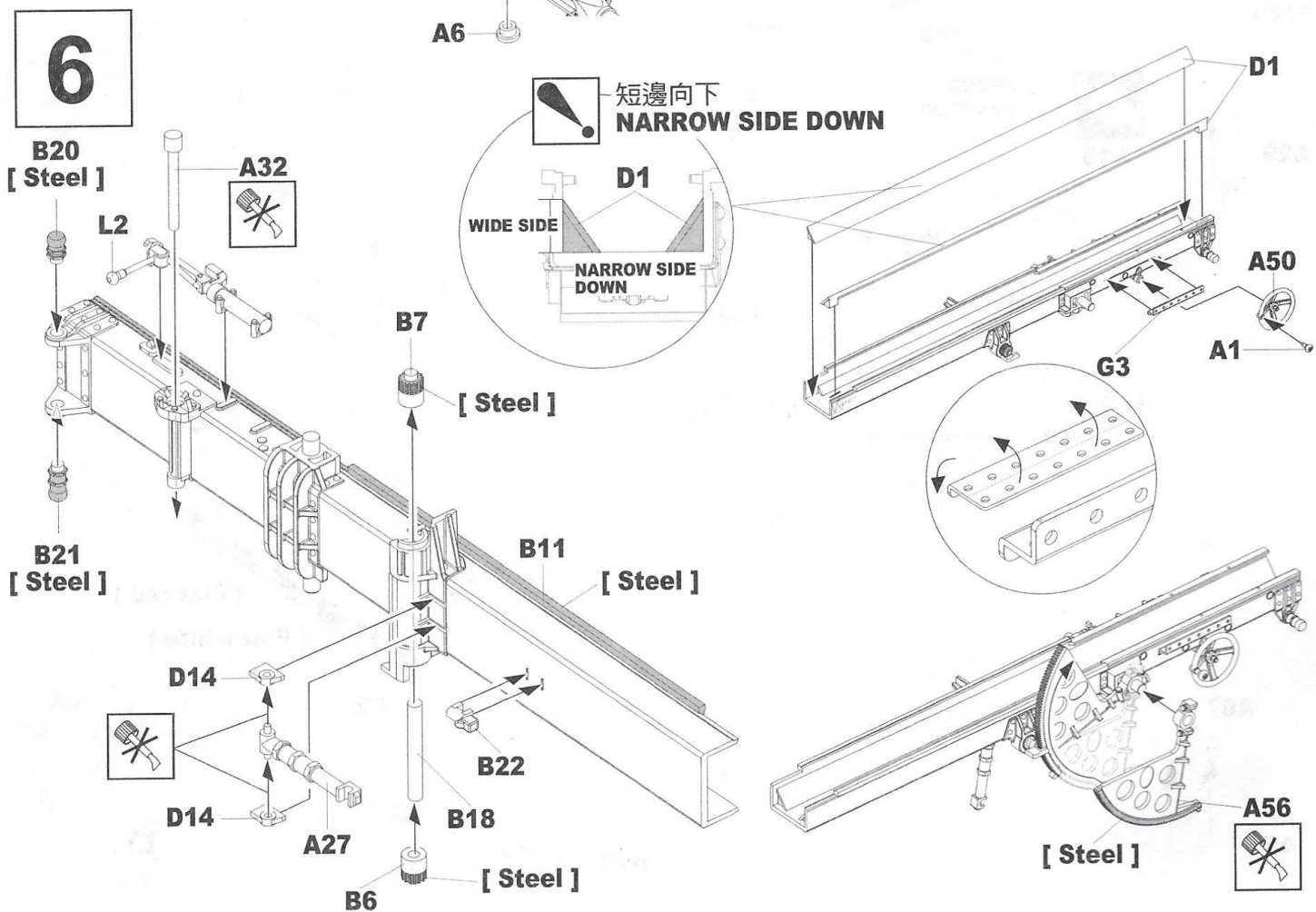
4



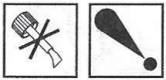
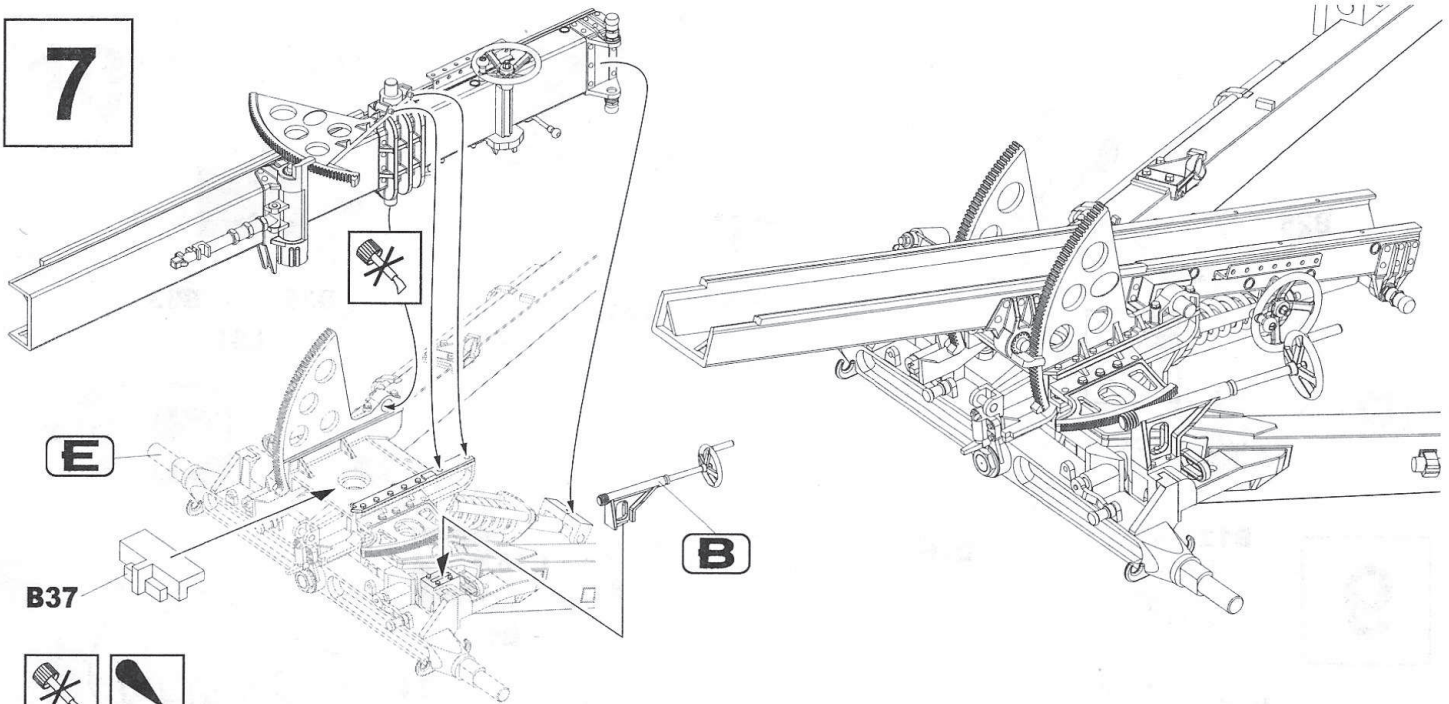
5



6



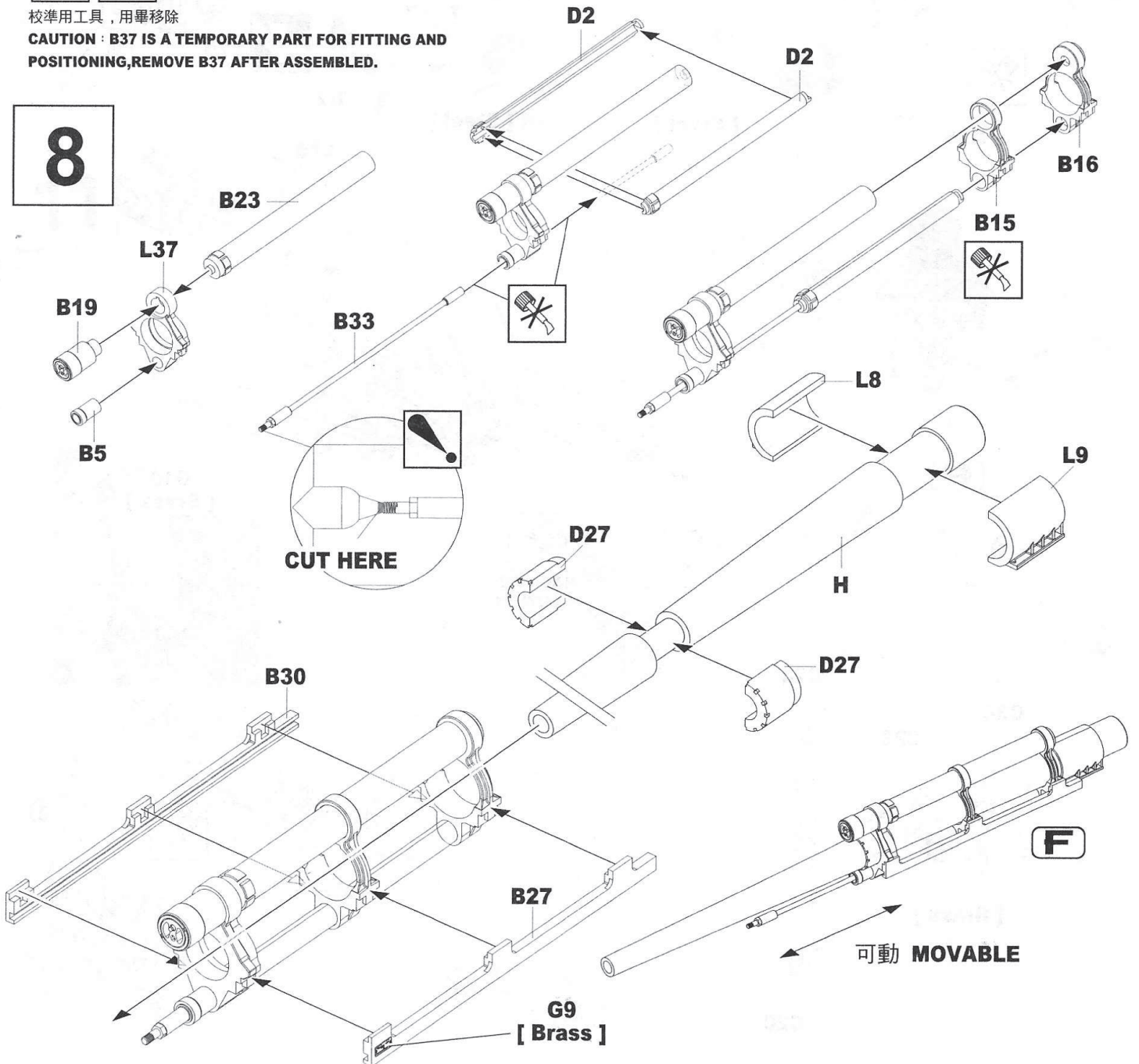
7

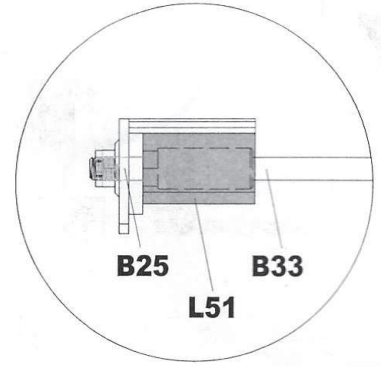
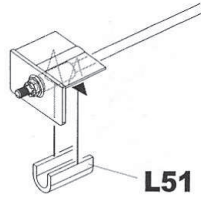
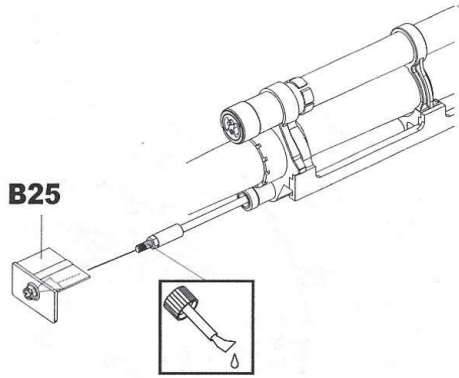


校準用工具，用畢移除

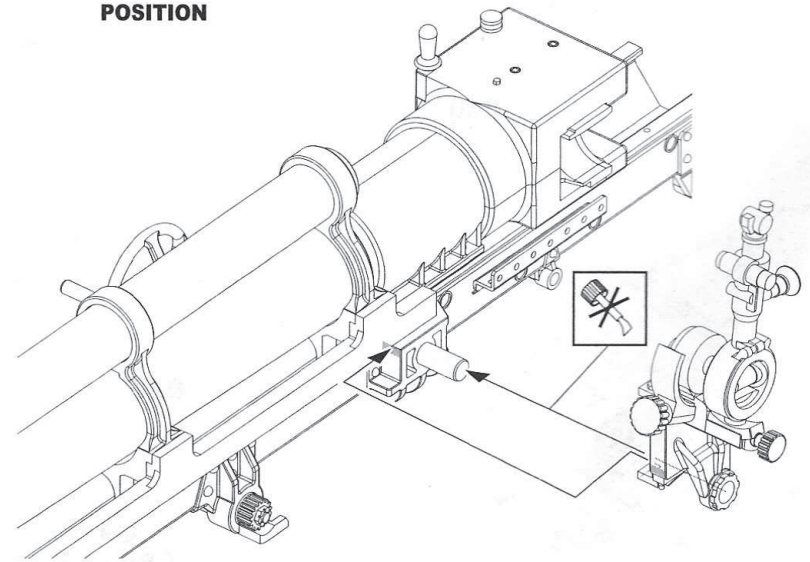
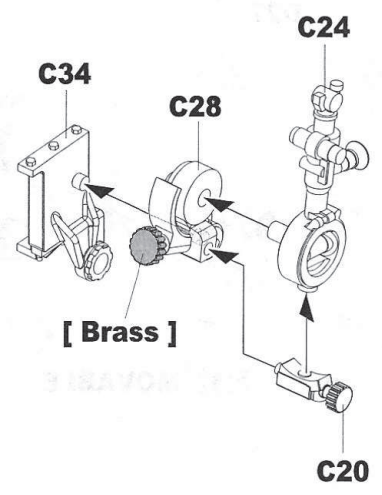
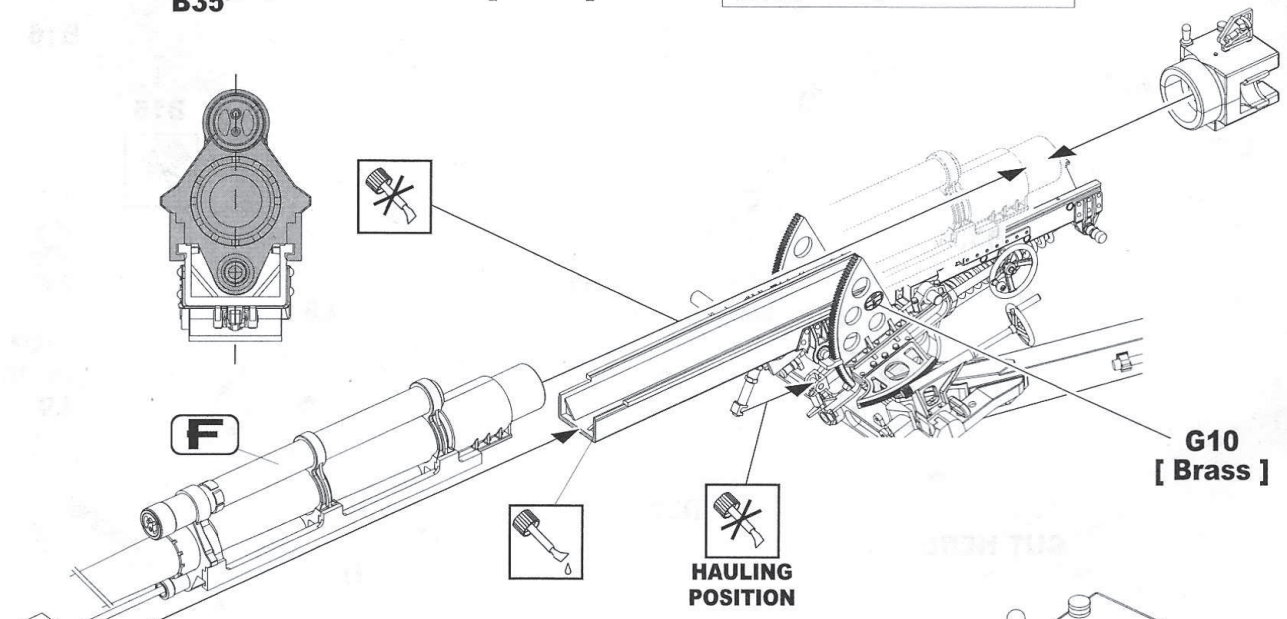
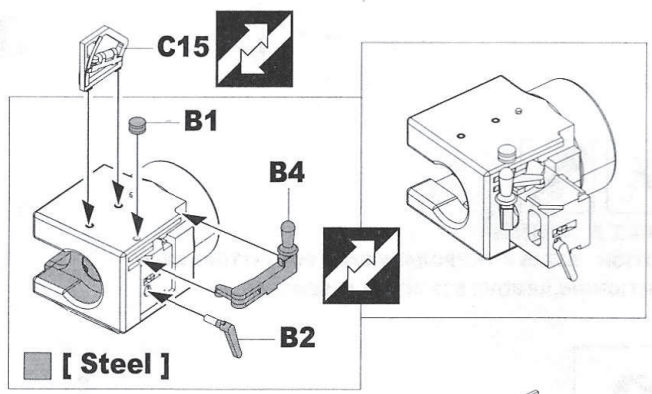
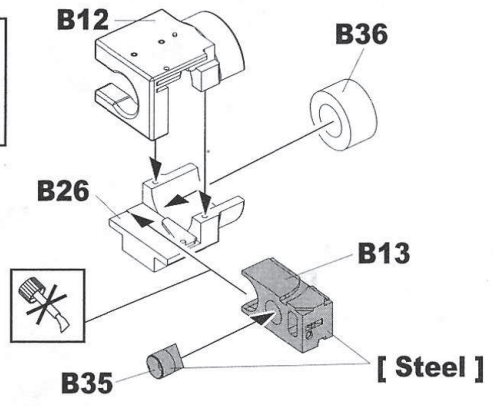
CAUTION: B37 IS A TEMPORARY PART FOR FITTING AND POSITIONING, REMOVE B37 AFTER ASSEMBLED.

8

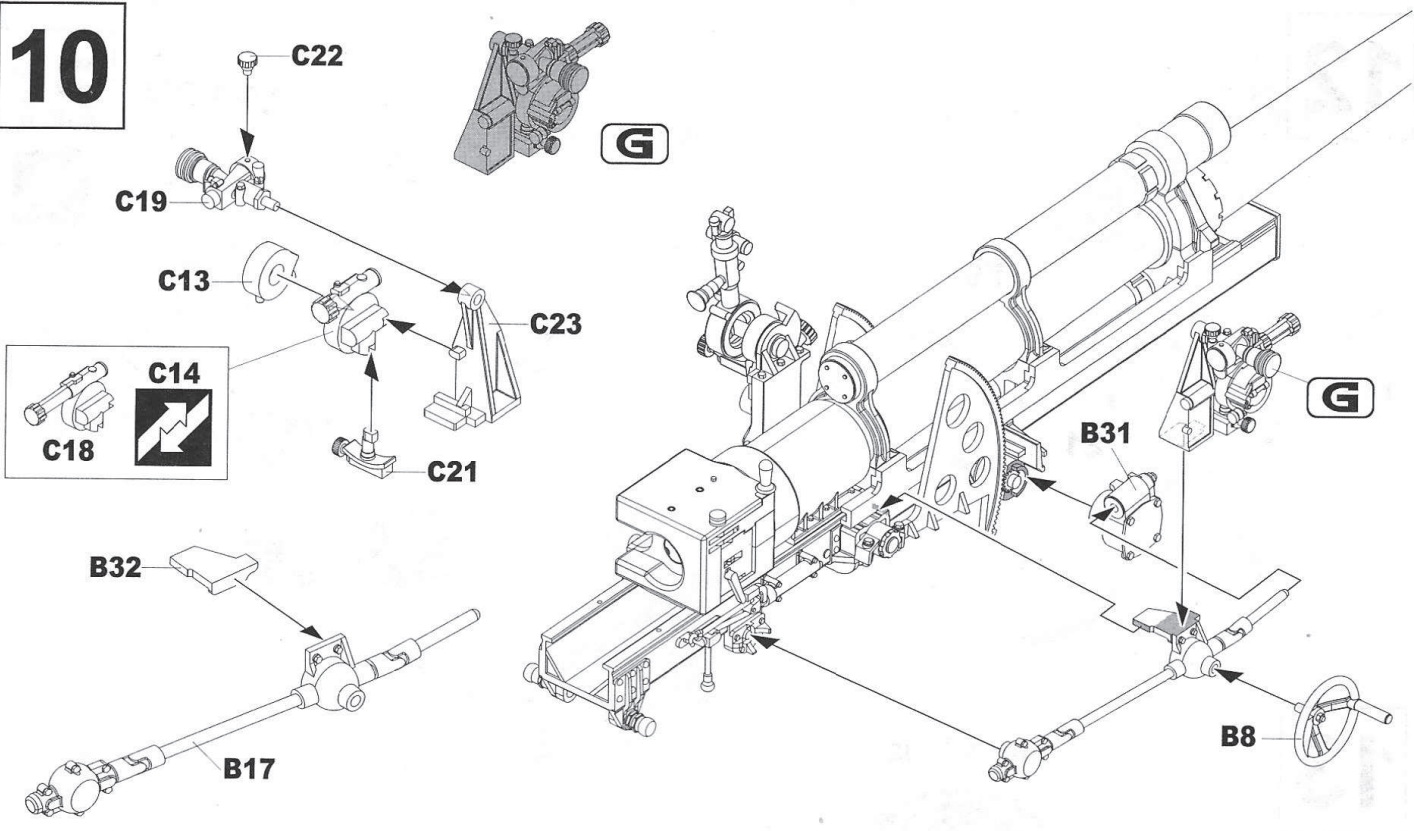




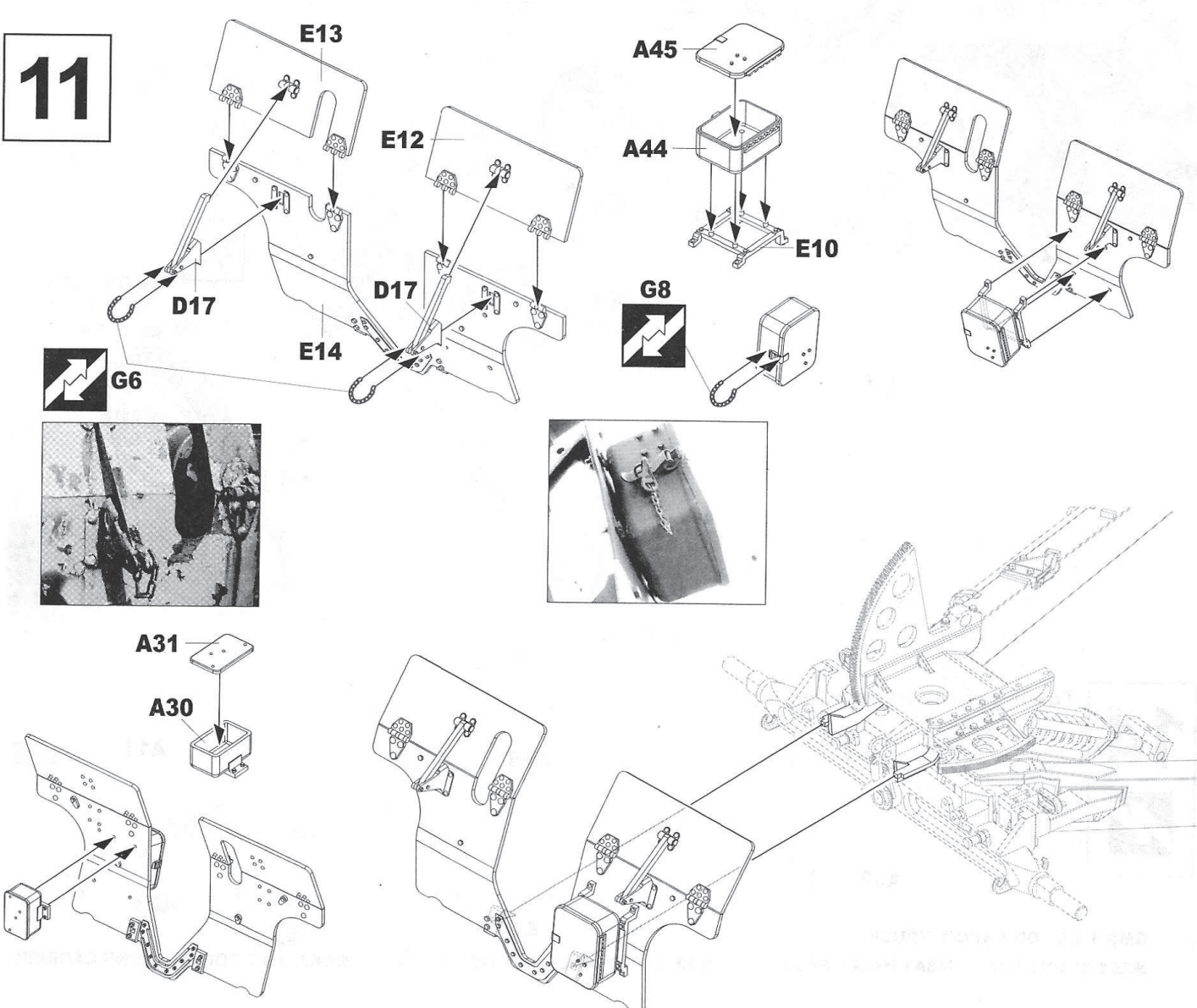
9



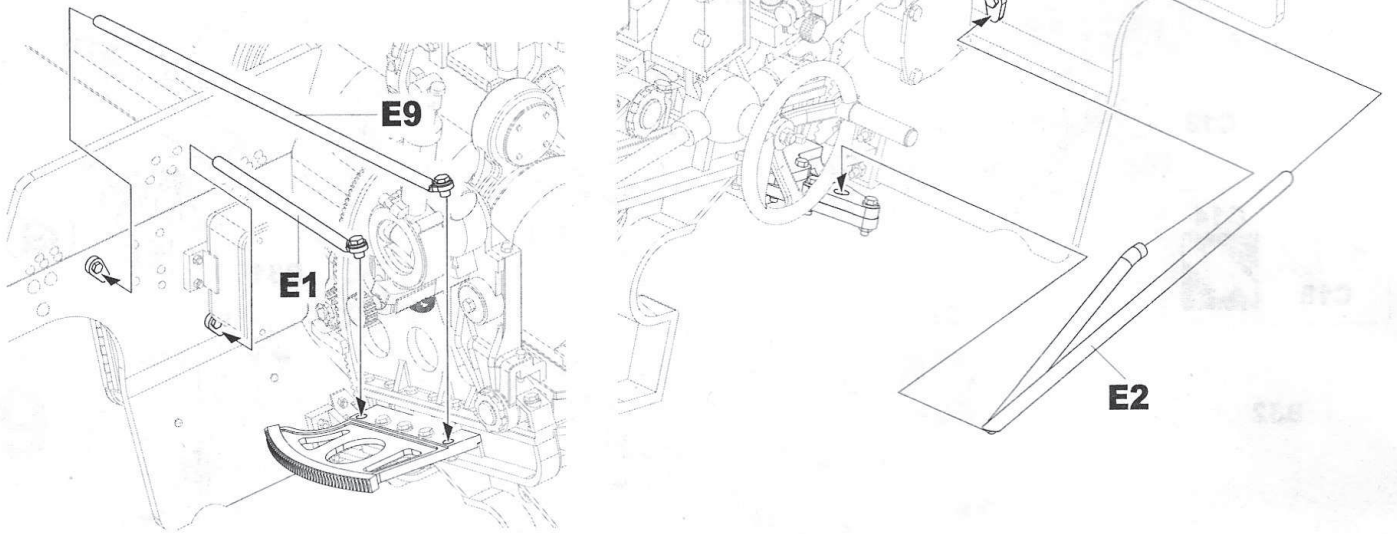
10



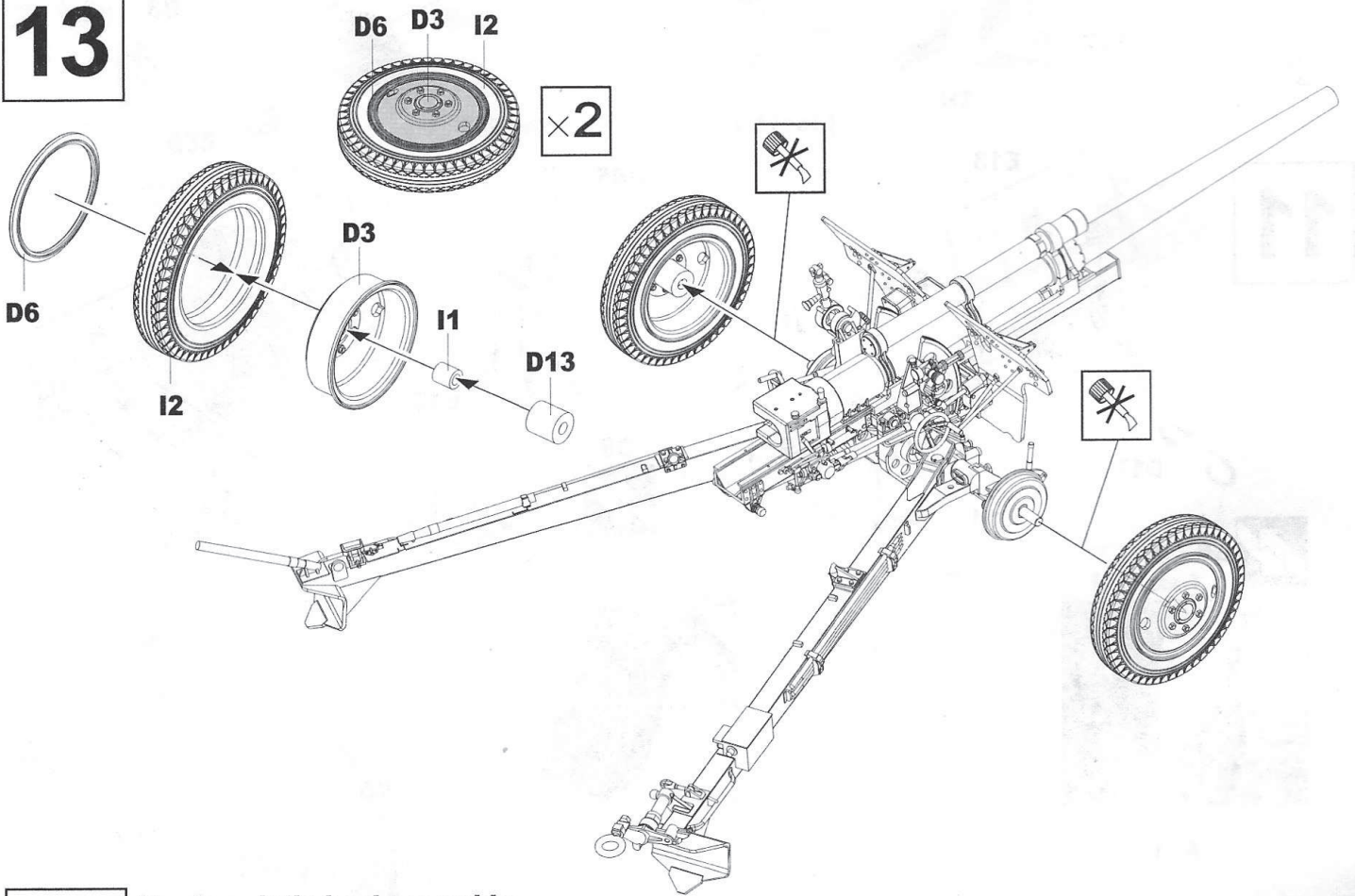
11



12

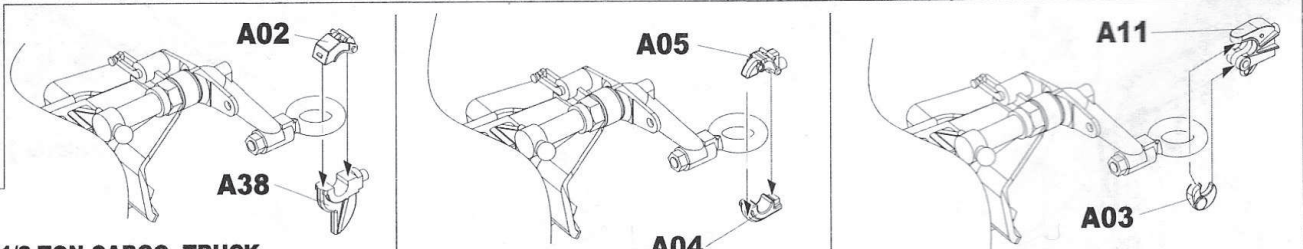


13



14

Towing pintle hook assembly



GMC 1 1/2 TON CARGO TRUCK
M3A1 SCOUT CAR & M3A1 HALF-TRACK

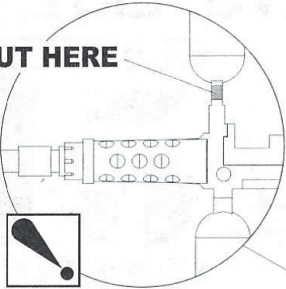
M35 2 1/2 TON CARGO TRUCK

WC63 1 1/2 TON WEAPONS CARRIER

15



CUT HERE



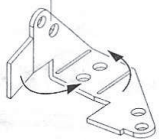
B29

B28

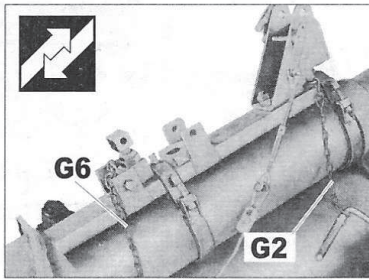
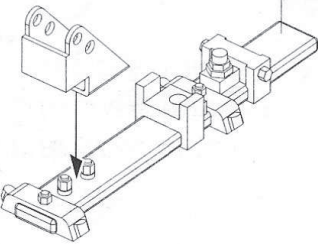
B10

B9

G4



C30



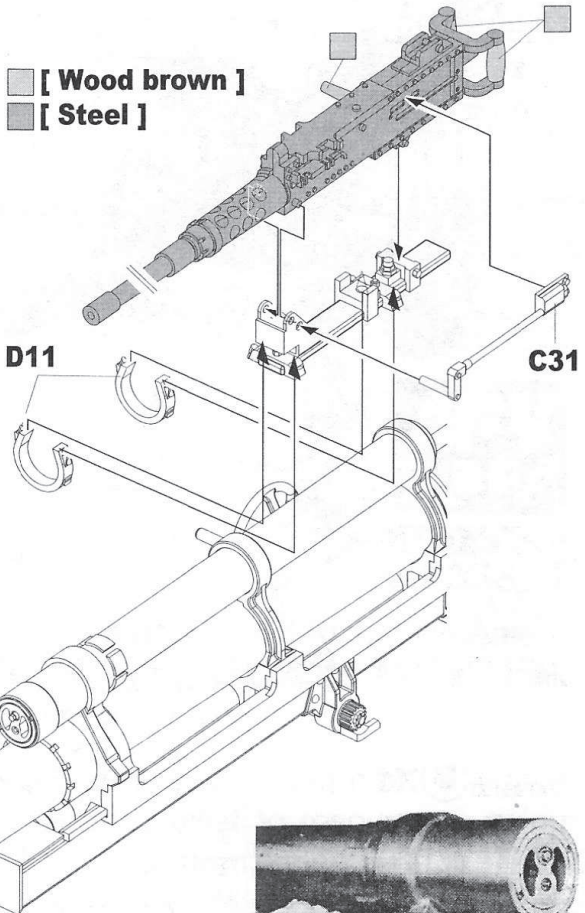
G6

G2

[Wood brown]
[Steel]

D11

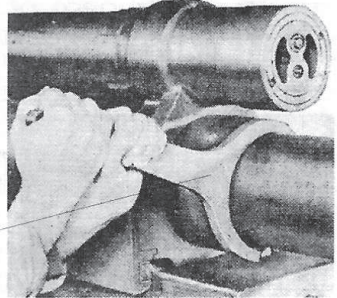
C31



C33



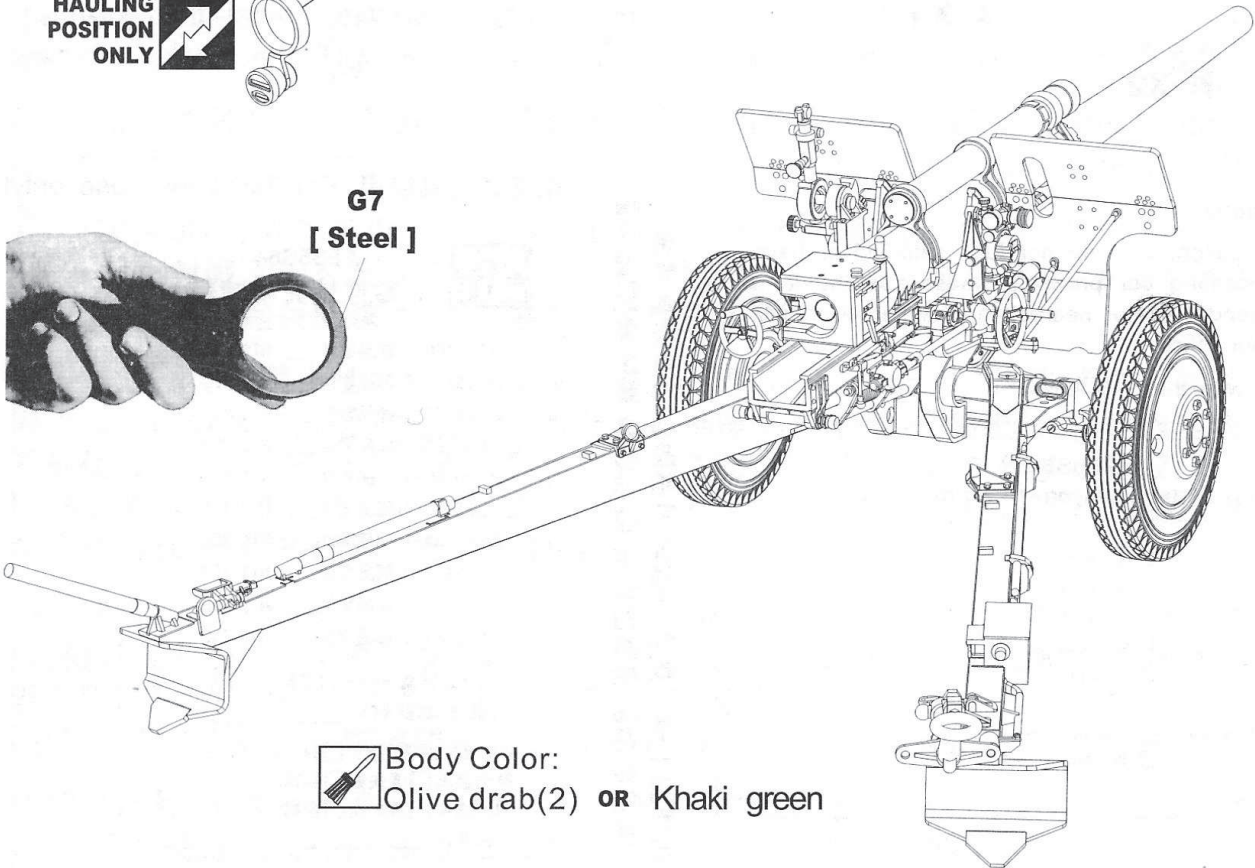
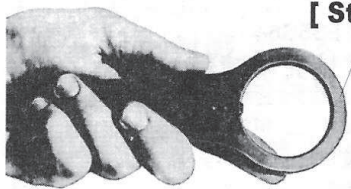
G5
[Steel]



HAULING POSITION ONLY

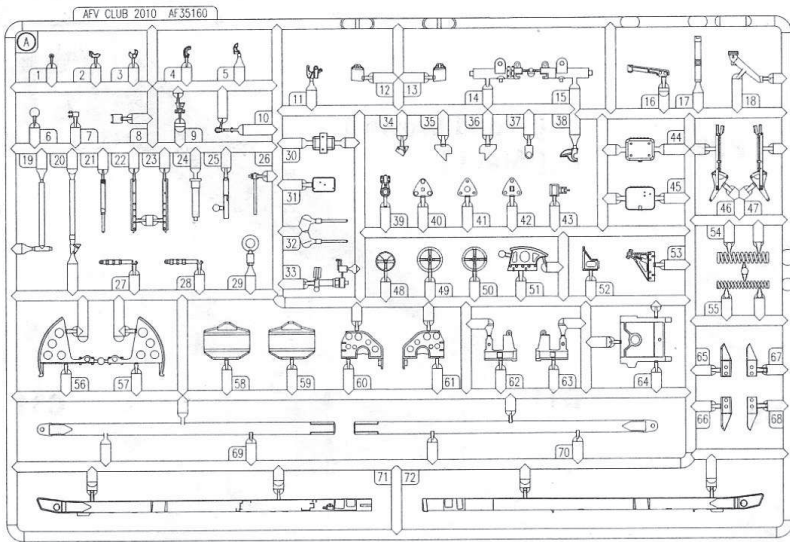


G7
[Steel]

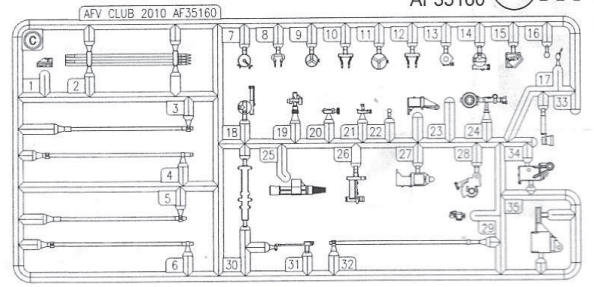


Body Color:
Olive drab(2) OR Khaki green

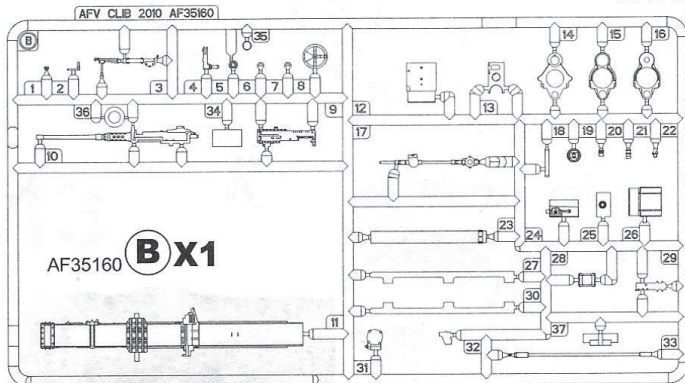
PARTS LIST 零件表



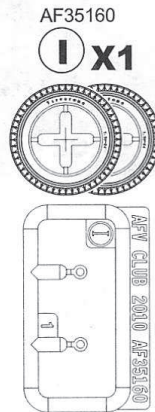
AF35160 **A X1**



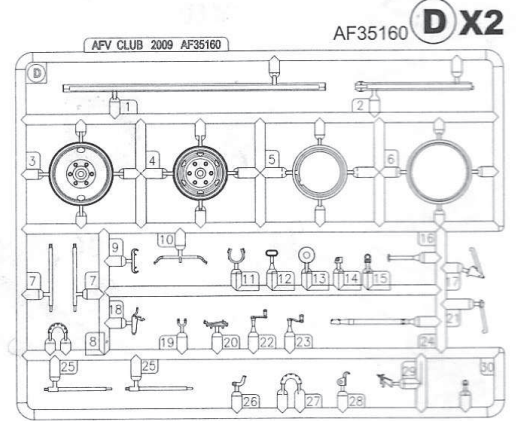
AF35160 **C X1**



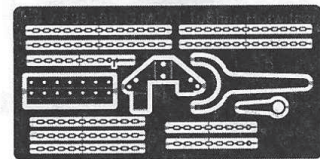
AF35160 **B X1**



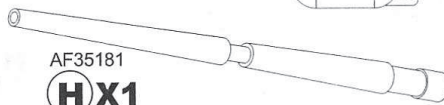
AF35160 **I X1**



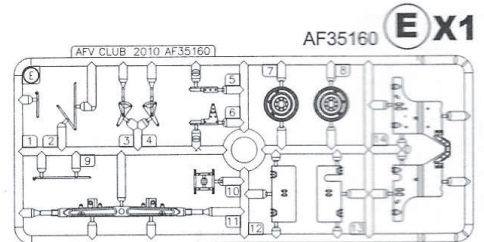
AF35160 **D X2**



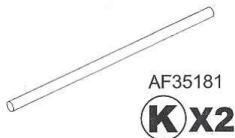
AF35160 **G X1**



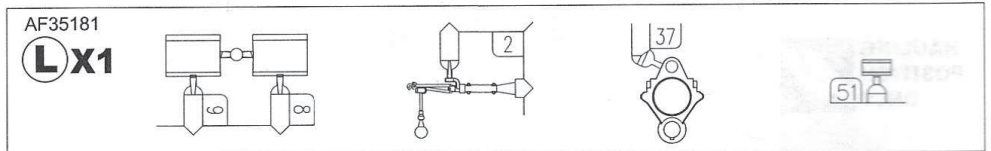
AF35181 **H X1**



AF35160 **E X1**



AF35181 **K X2**



AF35181 **L X1**



Instructions:

If for some reason, you are not fully satisfied or have questions concerning our product; Please use the form provide, and send it to our nearest representative or mail it directly to our office.

We will deal with that A.S.A.P.

限臺灣地區使用 For Taiwanese use only!

總代理戰鷹企業 客服部收 本公司將儘速為您處理。
請將本表與該部品相同金額之郵政匯票一同寄至



AF35S64 Parts Replacement Form

- | | |
|----------------------------------|----------------------------------|
| <input type="checkbox"/> A parts | <input type="checkbox"/> G parts |
| <input type="checkbox"/> B parts | <input type="checkbox"/> H parts |
| <input type="checkbox"/> C parts | <input type="checkbox"/> I parts |
| <input type="checkbox"/> D parts | <input type="checkbox"/> K parts |
| <input type="checkbox"/> E parts | <input type="checkbox"/> L parts |

Reason for replacement: Missing Broken

Signature: _____



AF35S64 零件補充申請表

申請人
姓名 地址 電話

- | | |
|---|----------|
| <input type="checkbox"/> AF35160-A 部品零件 | NT\$ 250 |
| <input type="checkbox"/> AF35160-B 部品零件 | NT\$ 220 |
| <input type="checkbox"/> AF35160-C 部品零件 | NT\$ 180 |
| <input type="checkbox"/> AF35160-D 部品零件 | NT\$ 300 |
| <input type="checkbox"/> AF35160-E 部品零件 | NT\$ 150 |
| <input type="checkbox"/> AF35160-G 部品零件 | NT\$ 150 |
| <input type="checkbox"/> AF35181-H 部品零件 | NT\$ 200 |
| <input type="checkbox"/> AF35160-I 部品零件 | NT\$ 100 |
| <input type="checkbox"/> AF35181-K 部品零件 | NT\$ 60 |
| <input type="checkbox"/> AF35181-L 部品零件 | NT\$ 150 |

+郵寄費 _____ NT\$ **80**

(請填) 總計 NT\$ _____

零件補充原因:(請於 打)

原包裝即 遺失或 毀損,

製作途中 遺失或 毀損,

其他原因 _____