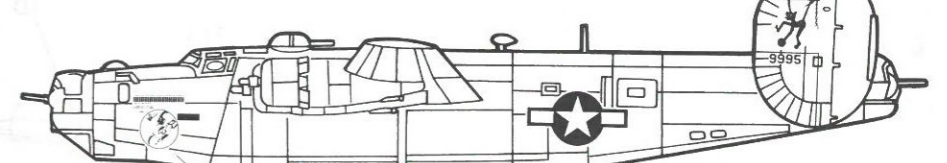


MONOGRAM® B-24J Liberator

1/48 SCALE MASSTAB 1:48 ESCALA 1/48
KIT 5608S
SCHAAL 1:48 1/48 ECHELLE SKALA 1/48 SCALA 1/48

MONOGRAM MODELS, INC. Morton Grove, Ill. Copyright © 1990. All rights reserved. Made in U.S.A. 5608 M 0200



If you have any problems building this model, call our modeling tips hotline at: (800) 833-3570

- READ THIS BEFORE YOU BEGIN**
- Study the assembly drawings.
- Each plastic part is identified by a number.
- Check the fit of each piece before cementing in place.
- Do not use too much cement to join parts.
- Use only cement for polystyrene plastic.
- Model may be painted to match photos on box.
- Allow paint to dry thoroughly before handling parts.
- Scrape paint from areas to be cemented.
- For better paint and decal adhesion, wash the plastic parts in a mild detergent solution. Rinse and let air dry.

- ALLGEMEINE HINWEISE**
- Die Anordnung der Bauteile ist aus den Zeichnungen der Anleitung ersichtlich.
- Jedes Plastikteil ist durch eine Nummer gekennzeichnet.
- Die Teile vor dem Verkleben ungeleimt zusammenhalten, um ihren Passitz zu prüfen.
- Klebstoff nicht zu dick auftragen.
- Nur Modellbaukleber für Polystyrol verwenden.
- Man kann das Modell nach den Fotos auf der schachtel anstreichen.
- Bemalte Teile vor der Weiterverwendung gut trocknen lassen.
- Die Farbe muss von allen späteren Klebestellen abgeschält werden.
- Damit die Farbe und die Abziehbilder besser kleben, sind die Plastikteile in einer milden Seifenlauge zu waschen. Dann abspülen und an der Luft trocknen lassen.

- LEA ESTO ANTES DE EMPEZAR**
- Estudia los dibujos de ensamble.
- Cada pieza de plastico se identifica por un numero.
- Verifique que cada pieza encaje bien antes de pegarlo en su posicion.
- No use demasiado pegamento para unir las piezas.
- Use unicamente pegamento para plastico de poliestirena.
- El modelo puede pintarse de acuerdo con las fotografias de la caja.
- Permita que se seque la pintura completamente antes de tocar las piezas.
- Raspe la pintura de las superficies que seran pegadas.
- Para una mejor fijacion de la pintura y de las calcomanias, lavense las piezas plasticas en una solucion de detergente suave. Enjuaguese y dejense secar al aire.

- LEES DIT ALVOREN TE BEGINNEN**
- Bestudeer de bouwtekeningen.
- Elk plastic onderdeel is genummerd.
- Controleer de passing van elk deel vóór het lijmen.
- Gebruik niet te veel lijm.
- Alleen lijm voor polystyreen plastic gebruiken.

- Men kan model verven zoals aangeduid op de doos.
- Laat de verf van de te verwerken delen steeds goed drogen.
- Verwijder de verf van de lijmen oppervlakken.
- Zodat de verf en etiketten beter zullen plakken, was de plasticke delen in een milde zeep oplossing. Spoel en laat in de openlucht drogen.

- LISEZ CE QUI SUIT AVANT DE COMMENCER LE MONTAGE**
- Etudier les schemas d'assemblage.
- Chaque piece plastique porte un numero d'identification.
- Contrôler que chaque piece soit bien conforme avant de la coller à sa place.
- N'utilisez pas trop de colle pour reunir les pieces.
- Utilisez uniquement une colle speciale pour polystyrene.
- Le modele peut etre peint conformement aux photos sur la boîte.
- Laissez secher la peinture complètement, avant de manipuler les pieces.
- Grattez la peinture sur les surfaces devant être collées.
- Pour assurer la meilleure adhesion possible de la peinture et des decalcomanies, laver les pieces de plastique avec une legere solution savonneuse. Rincer et laisser secher à l'air.

- LAS DET HAR INNAN DU BORJAR BYGGA**
- Studera monteringskisserna.
- Alla plastdelar har identifikationsnummer.
- Kolla noga att delarna passar före limningen.
- Stryk inte för mycket lim på delarna.
- Ändra endast lim för polystyrenplast.
- Modellen kan målas enligt foton på kängongen.
- Skrapa bort färgen på de ytor som ska limmas.
- För bättre vidhäftning av färg och dekalmarken rengör plastdelarna i en mild tvättmedelslösning. Skölj och låt lufttorka.

- DA LEGGERE PRIMA DI INIZIARE**
- Studia le illustrazioni.
- Ogni pezzo è identificato da un numero.
- Controlla il mastro di ogni pezzo prima di incollarlo.
- Non usare troppa colla per unire i pezzi.
- Adopera solamente colla per materie plastiche.
- Il modello si può dipingere seguendo le fotografie sulla scatola.
- Aspetta che la vernice sia completamente asciutta prima di maneggiare le parti.
- Asporta la vernice dai punti dove applicherai la colla.
- Per una migliore aderenza di vernice e decalcomanie, lavare le parti in plastica in soluzione detergente non abrasiva. Risciacquare e lasciar asciugare all'aria.

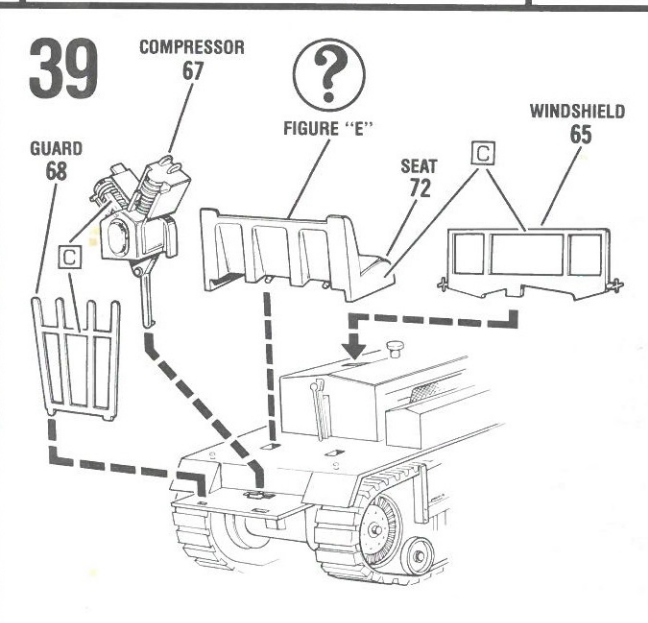
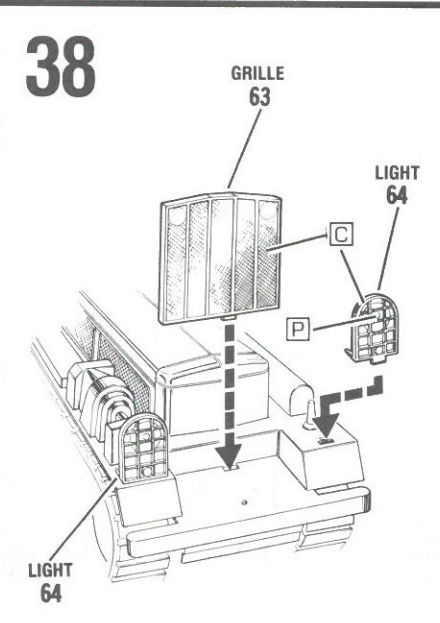
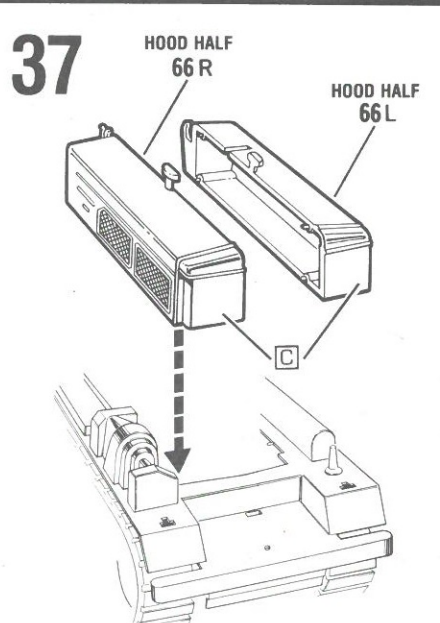
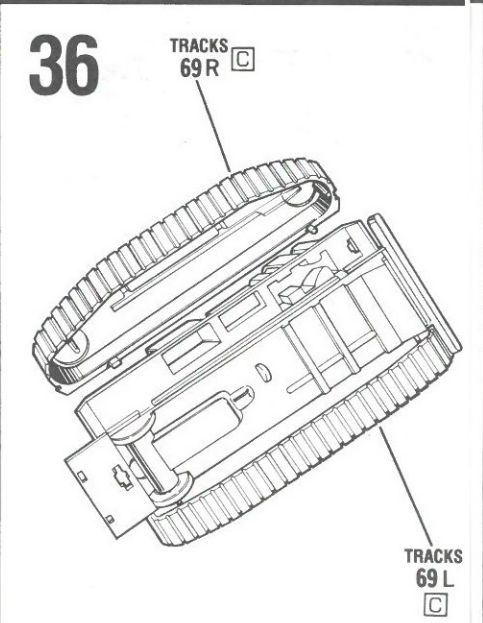
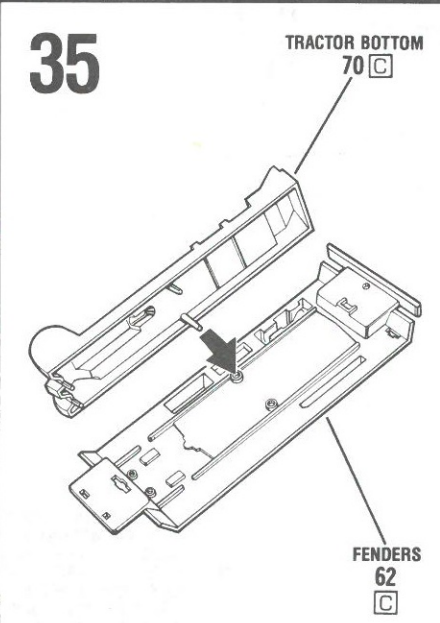
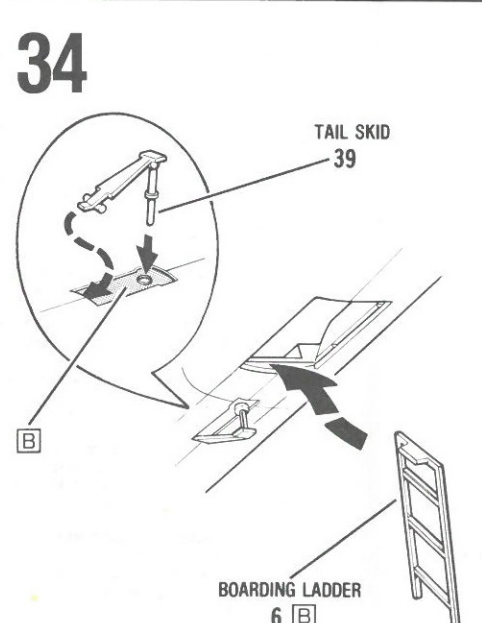
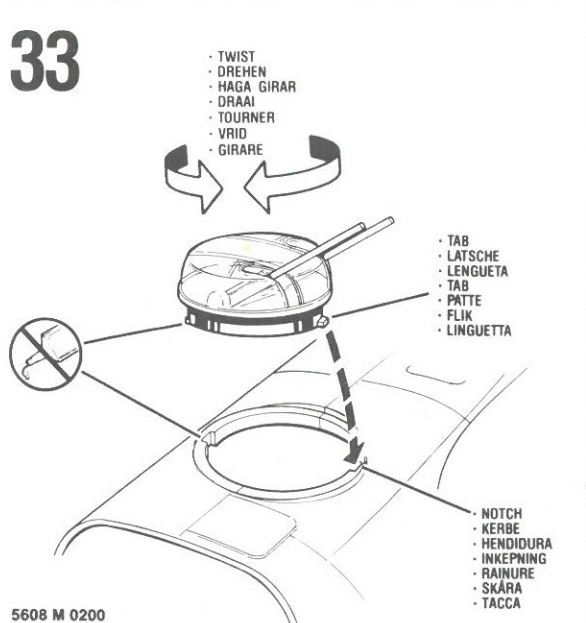
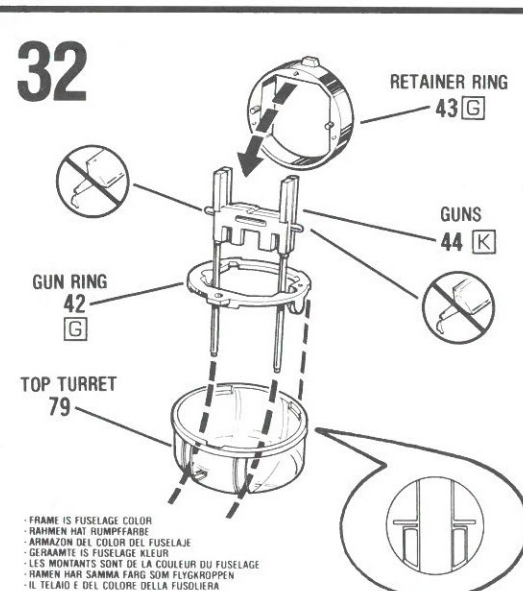
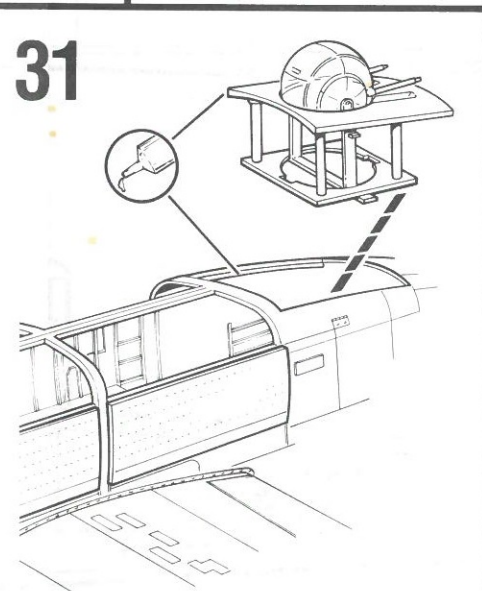
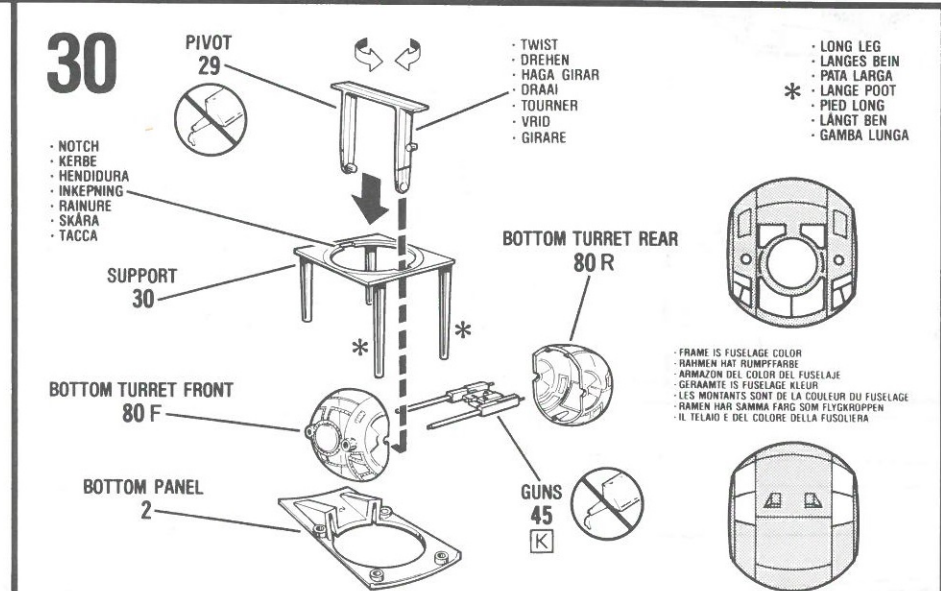
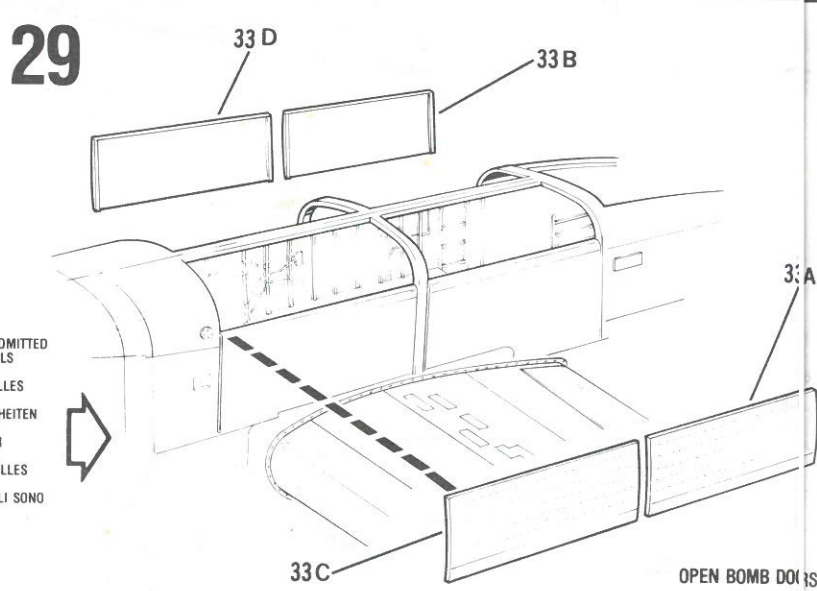
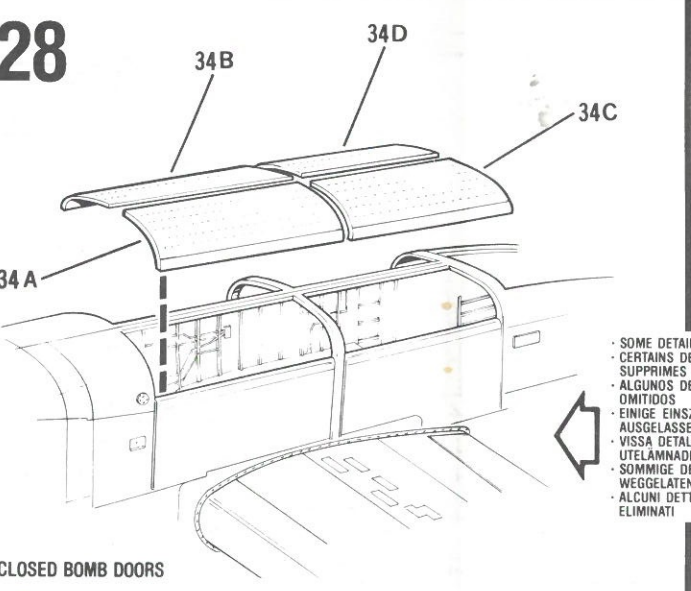
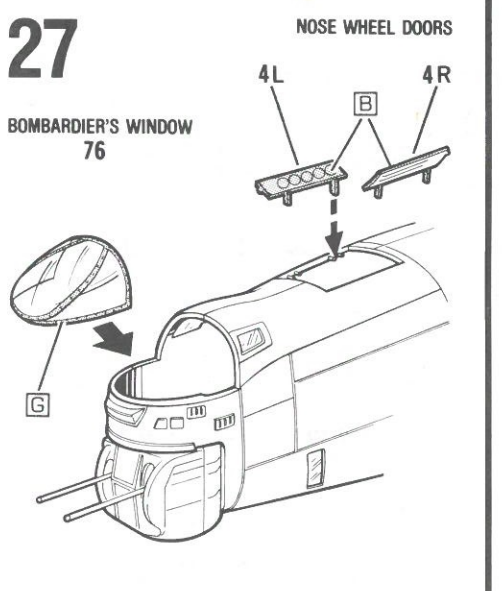
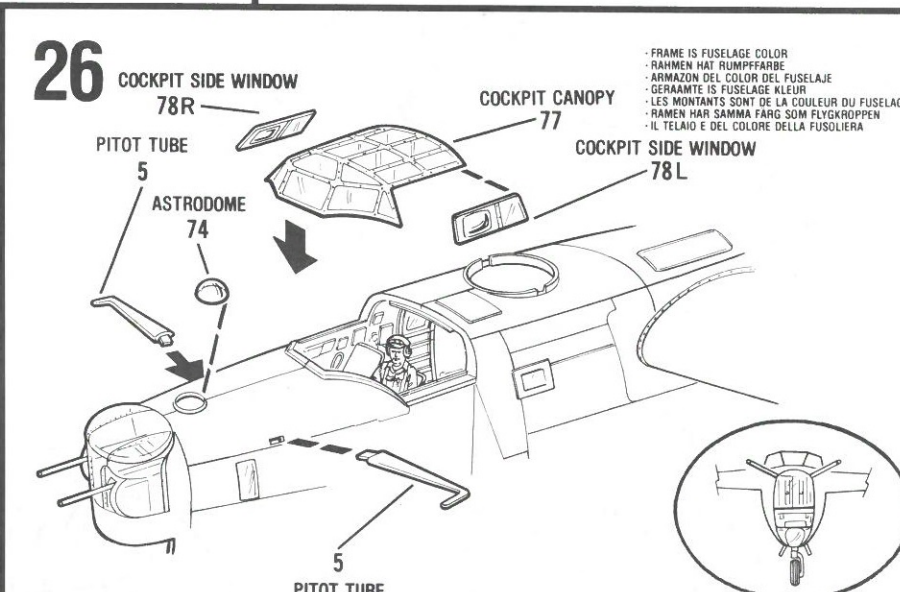
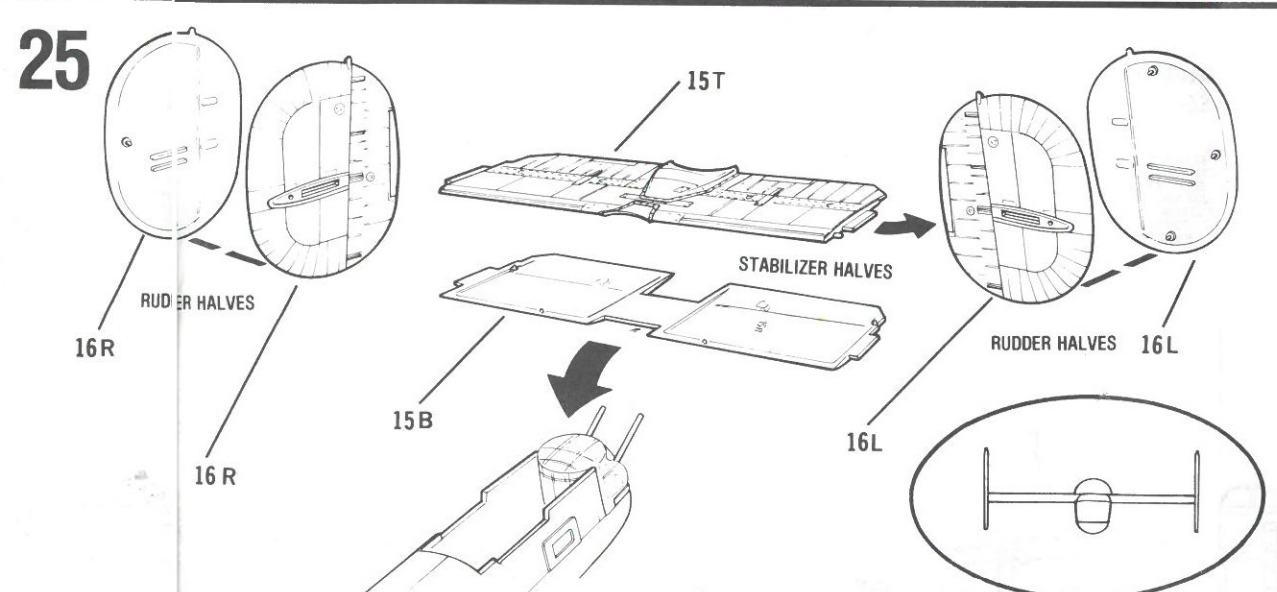
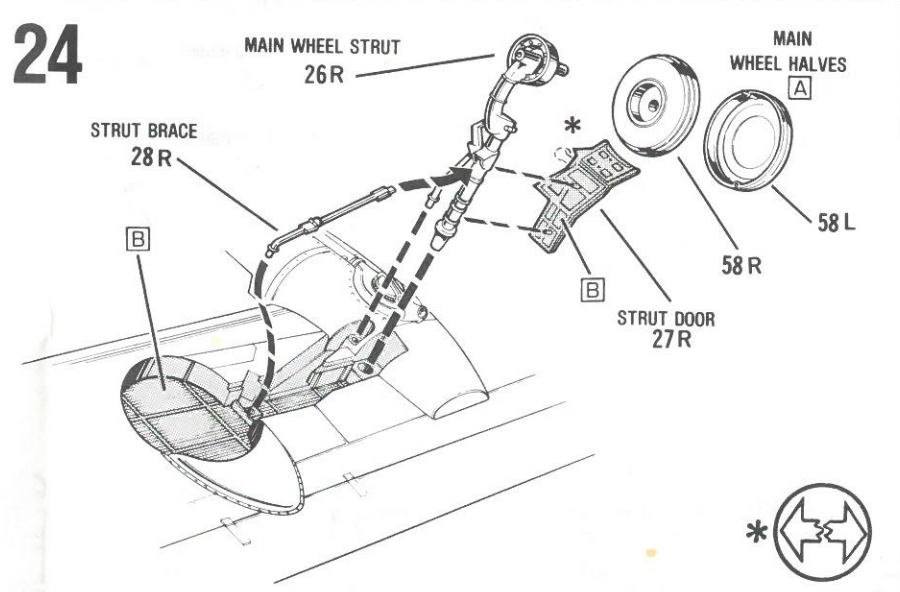
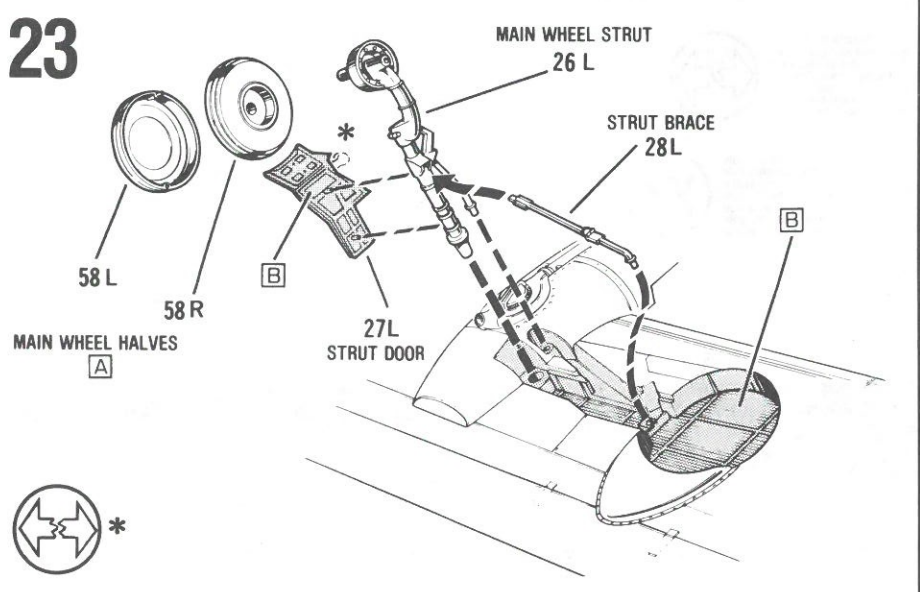
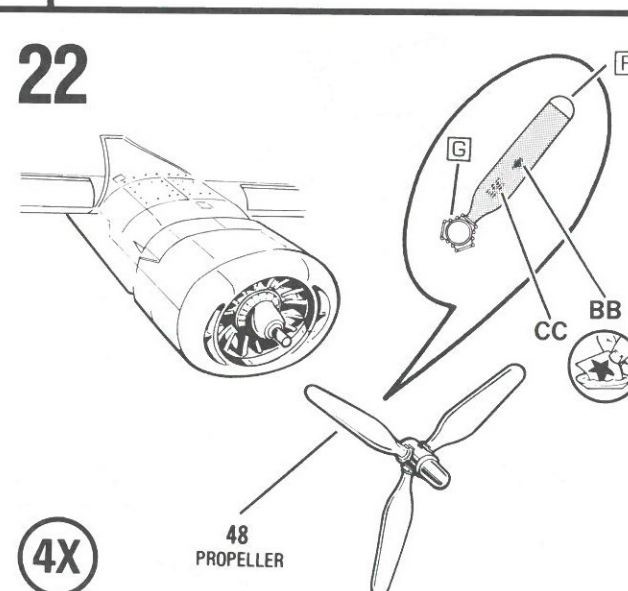
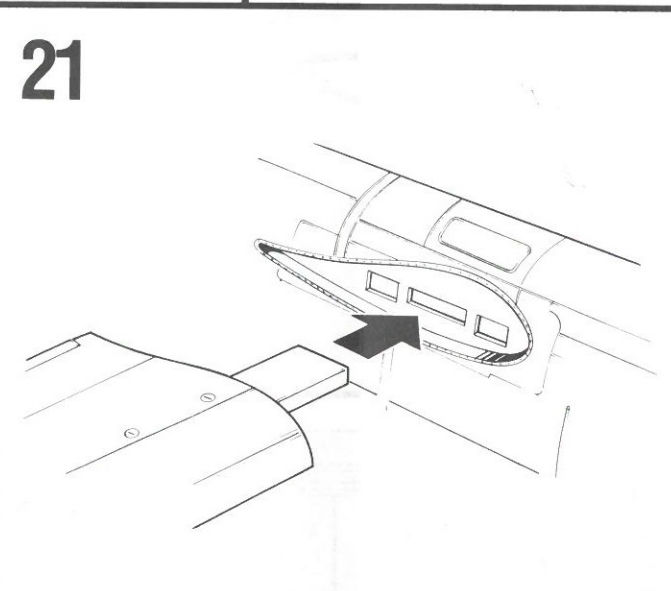
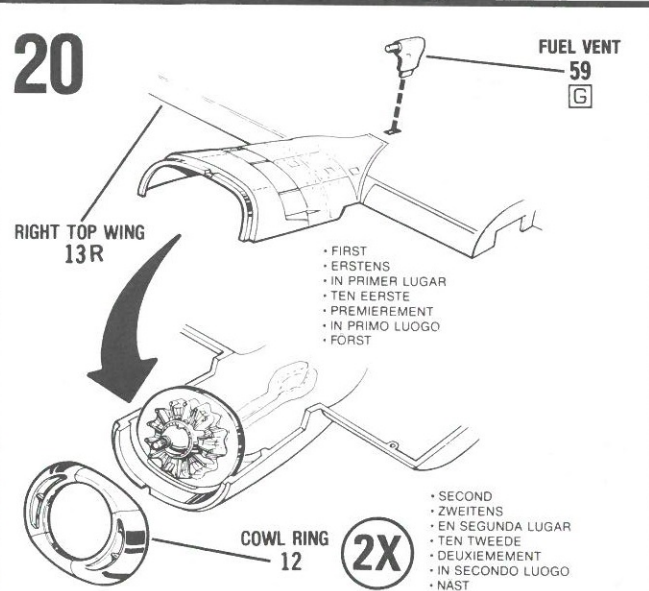
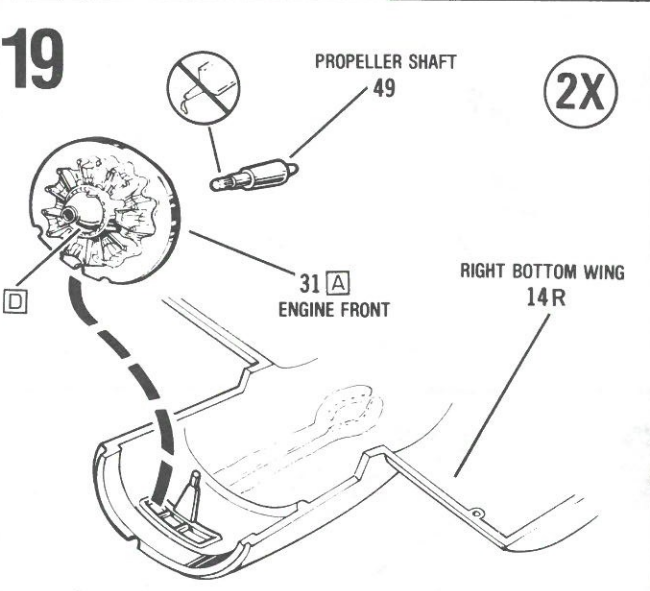
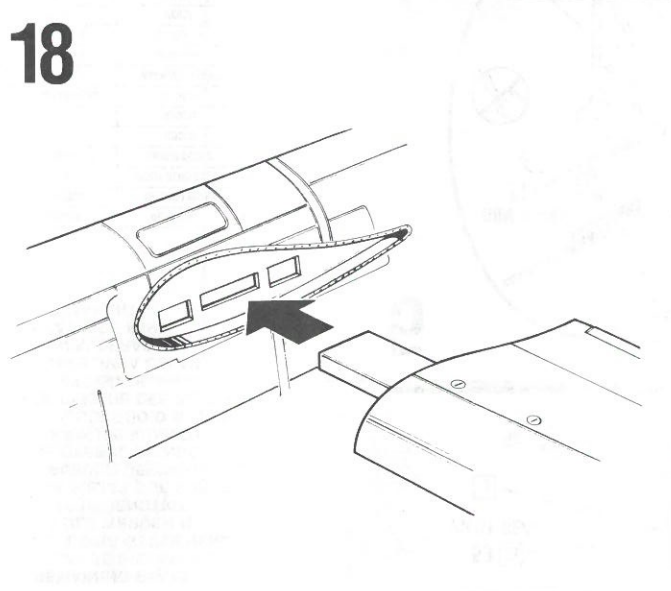
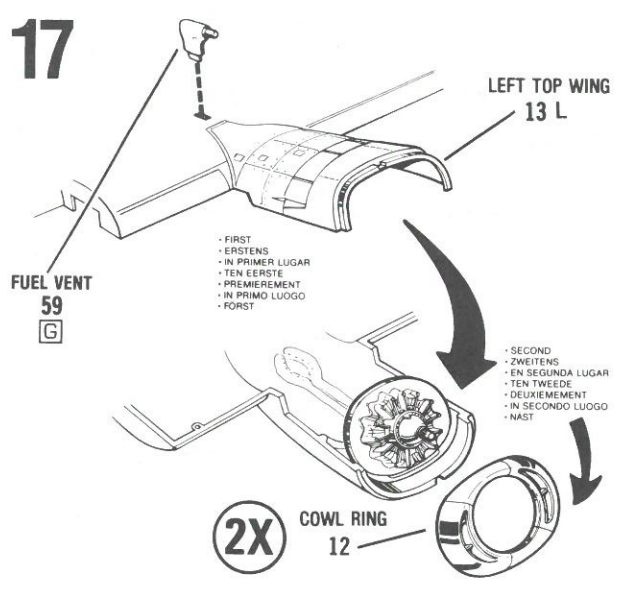
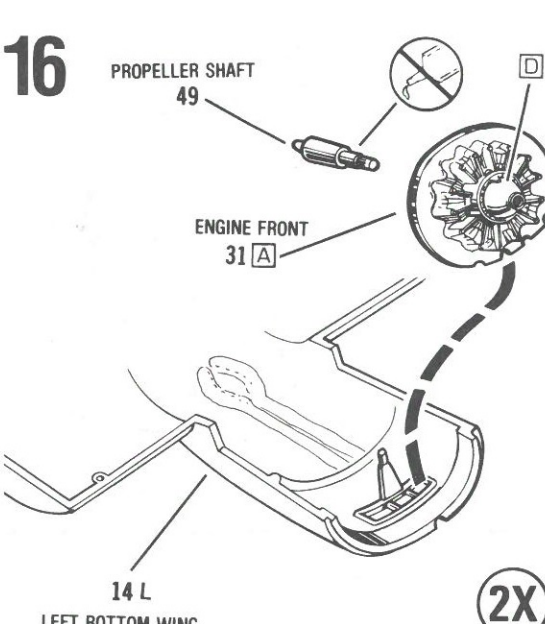
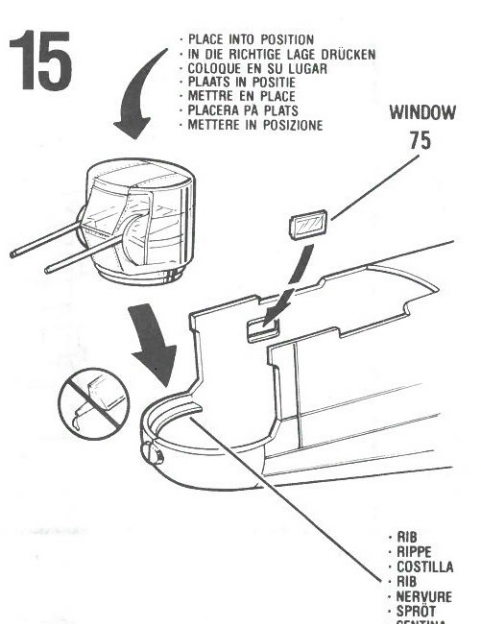
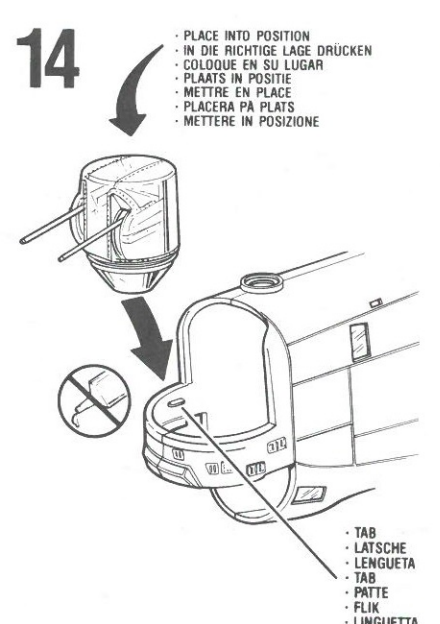
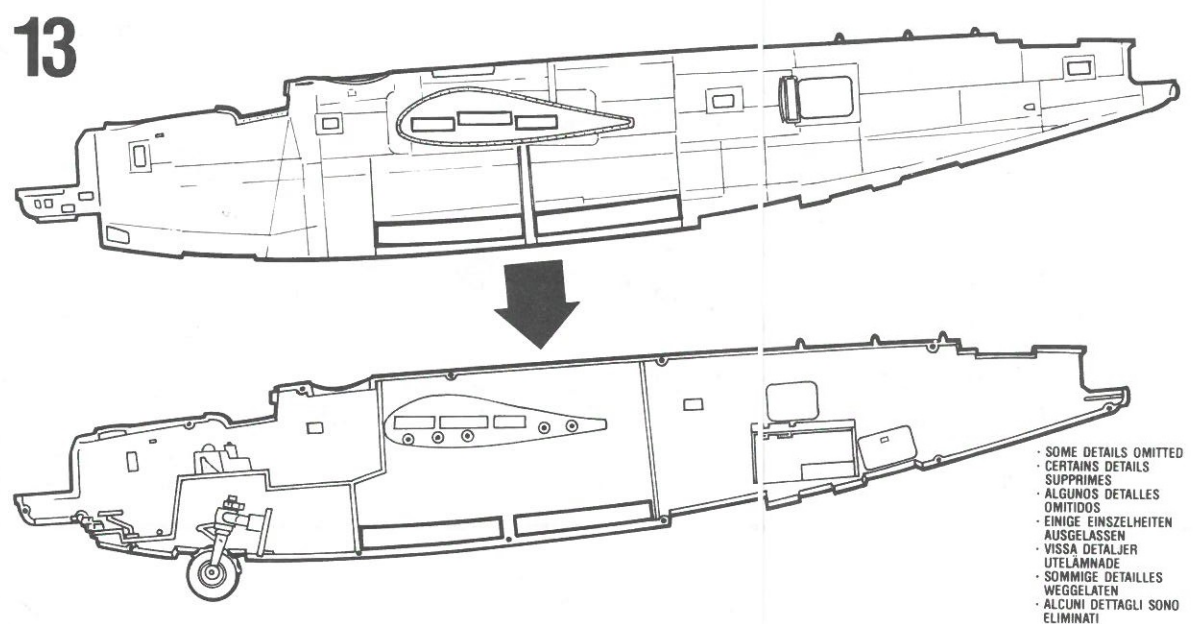
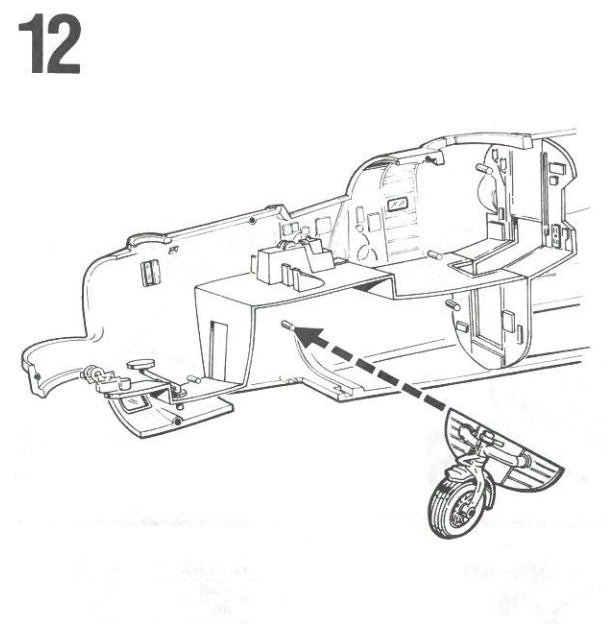
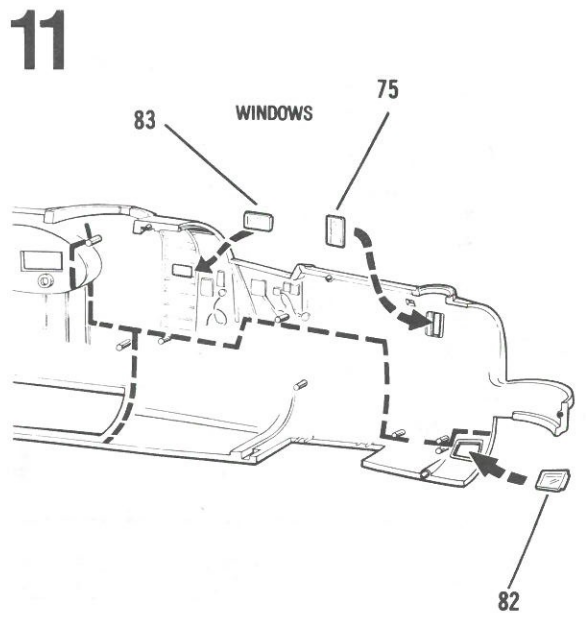
- CREWMAN PAINTING... ARMY — TAN PANTS AND CAP. BROWN JACKET, BROWN SHOES, WHITE PARACHUTE STRAPS WITH SILVER BUCKLES, YELLOW LIFE PRESERVER.
- BESÄTTUNGSANSTRICH... WEHRMACHT — HELLBRAUNE HOSE UND KAPPE, BRAUNE JACKE, BRAUNE SCHUHE, WEISSE FALLSCHIRMGURTE MIT SILBERNEN SCHMÄLLEN, GELBE RETTUNGSWESTE.
- PINTURA DEL TRIPULANTE... EJERCITO — PANTALON Y GORRA COLOR CANELA, CHAQUETA MARRON, ZAPATOS MARRONES, CORREAS DEL PARACAIDAS BLANCAS CON HEVILLAS PLATEADAS, SALVAVIDA AMARILLO.
- VERVEN VAN BEMANNING... LEGER — TAAKLEURIGE BROEK EN PET, BRAUNE JAS, BRAUNE SCHOENEN, WITTE PARACHUUT RIEMEN MET ZILVERLEURIGE GESPEN, GEEL ZWEMVEST.
- FINITION DU MEMBRE D'EQUIPAGE... ARMEE — PANTALON ET CASQUETTE BEGES, VESTE MARRON, CHAUSSURES MARRON, SANGLES DE PARACHUTE BLANCHES AVEC BOUCLES ARGENT, GILET DE SAUVETAGE JAUNE.
- MALING AV BESÄTTNINGSMAN... ARMEN — BRUNGULA BYXOR OCH MÖSSA, BRUN JACKA, BRUNA SKOR, VITA FALLSKÄRMSREMOR MED SILVERFÄRGADE SPÄNNEN, GUL FLYTVÄST.
- COLORATURA EQUIPAGGIO... ESERCITO — PANTALONI E BERRETTO MARRONE CHIARO, GIACCA MARRONE, SCARPE MARRONE, CINGHIE PARACADUTE BIANCHE CON BORCHIE ARGENTO, SALVAGENTE GIALLO.

Every effort has been made to create and manufacture a model kit that is the finest available. If a part may be missing, please write to:

Monogram Models, Incorporated
Consumer Service Department
395 North Third Avenue
Des Plaines, Illinois 60016

Be sure to include the kit number, part number, description, and your return address.

- BLUE FORMATION LIGHTS
- BLAU FORMATIONSLEUCHTEN
- LUCES AZULES DE FORMACION
- BLAUWE FORMATE LICHTEN
- FEUX BLEUS DE FORMATION
- BLÅ FORMATIONSLJUS
- FARI DI FORMAZIONE BLU



NOTE: Pin on end of tow bar 71 fits into hole in axle on nose gear. Other end of tow bar fits over hook on end of long pin on compressor on tractor.

Every effort has been made to create and manufacture a model kit that is the finest available. If a part may be missing, please write to:
Monogram Models, Incorporated
Consumer Service Department
395 North Third Avenue
Des Plaines, Illinois 60016
Be sure to include the kit number, part number, description, and your return address.

B-24J 5608M0310

©COPYRIGHT MONOGRAM INC. 1990
ALL RIGHTS RESERVED

AA



BB



CC



GG



HH

II



FF



PLEASE DO NOT WRITE IN
OR REMOVE ANY OF THE
STICKERS FROM THE
FRONT OR BACK OF THE
CARD



FINC
EXTRAORDINARY



DD



EE

9995

9995