

**Sd.Kfz.251/9
Ausf.D
Early-mode**

Kanonenwagen



In early WWII, the Sd.Kfz.251/4 half-track has been widely adapted in towing and ammo transporting role in the German Army. starting from 1942, the short-barreled 7.5cm KwK37 L/24 cannon of Pz Kpfw IV were replaced by long barreled ones, leaving a great number of redundant short barrel guns. There fore were mounted onto the Sd.Kfz.251/4 chassis. This hybridself-propelled guns was designated Sd.Kfz.251/9.

In early design, the gun mount was located on the floor of the personnel compartment. The commander's seat on the right as well as the frontal armourplate were removed. This newly created space was occupied by the 7.5 cm cannon, extra armor shield were also added on both sides of the gun for personnel protection. In this layout, the aimer and the loader were located side by side on the left hand side, resulting in some difficulty in operation.

A later version, using the Sd.Kfz.251D chassis, was introduced in 1944.The gun was moved from the left to the center, and the loader seat was switched to the right of the gun. The gun, as well as its armor, were moved up to the roof of the personnel chamber. Although this modification had increased the height of the vehicle, it no longer required major modification on the front of the chassis. This new version was designatedK51(Sf), which was able to fire grenade and anti-armor shells. An axis MG42 machine gun was also added on the right of the main gun. Following the removal of the gun mount, the floor space and become more spacious.

The Sd.Kfz.251/9 was mainly served in panzergranadier units, providing fire support for infantry units in all fronts.

第二次大戦の初期、ドイツ陸軍はSd. Kfz251/4を砲の牽引や弾薬運搬車として広く用いていた。1942年に入ると、IV号戦車の搭載砲が短砲身24口径7.5cmKwK37戦車砲から長砲身のものに変更されたため 大量の24口径7.5cm砲が余ることとなった。そのため、Sd. Kfz251/4の車体にこの砲を搭載して活用することとなり、車輛にはSd. Kfz251/9という型式名があたえられたのである。

初期のデザインでは、砲架は兵員室の床に取付けられていた。戦闘室右側の前面装甲板を切欠くと共に指揮官席を取り除き、あいたスペースに7.5cm砲が据えられ、乗員保護のために砲の両側に装甲板が追加されていた。射手と装填手は砲の左側に並んで位置することとなったが、この配置は砲の操作上、障害となることがあった。

Sd. Kfz251のD型車体を利用した後期型が1944年から生産された。最後期型では、砲の設置位置は右側から中央に移され、装填手席も砲の右側に移動した。砲は、戦闘室の屋根の上に取り付けられるようになり、そのため車高が高くなることとなったが、大規模な車体の改造を行わずにすむのと、床に据えてあった砲架が移動したことにより、車内のスペースが広がるというメリットがあった。砲にも改良が施され榴弾に加え、HEAT弾の発射が可能となったことで対戦車戦闘能力が高上し、また砲の右側同軸にMG42機関銃が追加された。この砲にはK51 (Sf) という名称がつけられた。

Sd. Kfz251/9は、主に装甲擲弾兵部隊に配備され、すべての戦線で歩兵の火力支援に活躍したのである。

二次大戰初期，德國半履帶車Sd.Kfz.251/4被賦與輕型火砲牽引與彈藥運輸的用途。但自1942年開始，裝甲部隊中原本擔任火力支援任務的IV號戰車，被陸續的更換上長砲身的7.5cm砲。而大量汰換下來的7.5cm KwK37短身砲被裝配於Sd.Kfz.251上。促成了自走砲化的Sd.Kfz.251/9出現，逐步取代原本Sd.Kfz.251/4的角色。

Sd.Kfz.251/9使用了C型與D型的車體，早期的Sd.Kfz.251/9將砲架安裝於戰鬥室的地板上，並將原本右側車長席廢棄。駕駛席右側的空間騰出後，讓7.5cm火砲的砲身安置於此，砲身兩側並增設了裝甲以提供乘員保護，如此的配置使瞄準手與裝填手並列於車內左側，造成操作上稍許的困難。

1944年在Sd.Kfz.251D的車體上，改變了火砲搭載方式的後期型出現。主砲的配置由原本偏向車身右側改為置中，裝填手的位置也改為砲身右側。主砲與防盾被一起安裝至戰鬥室前端的上方，雖然車身的高度因此而增加，但車前方也不再需要大幅修改。火砲的型號也更改為K51(Sf)，具有發射榴彈與反裝甲的能力，並於砲右側增設一挺MG42同軸機槍，車內由於省略了固定砲架而使得空間增加。

Sd.Kfz.251/9主要配屬於裝甲擲彈兵營，擔負提供步兵火力支援的任務，活躍於歐洲各個戰線。

Illustration:圖示說明



Method For Applying Decals:

1. Clean Model Surface With Wet Cloth.
2. Cut Out Of Decal Sheet And Dip Them In Water For 15 Seconds.
3. Place it on proper position on model.
4. Slide off base paper leaving decals On Model With Wet Finger Tip.
5. Move Decals To Exact Position, Push Out Excess Water Under Decal With Soft Cotton Cloth.
6. When Decals Get Dry Then Complete.

水貼紙使用說明:

1. 將模型表面擦乾淨
2. 將貼紙剪下泡入清水中約15秒
3. 將泡濕之貼紙取出置於欲貼處旁
4. 用指尖輕推貼紙表面使其滑出底紙
5. 將貼紙調整至適當位置並輕擦拭水份
6. 待其自然乾燥後即完成

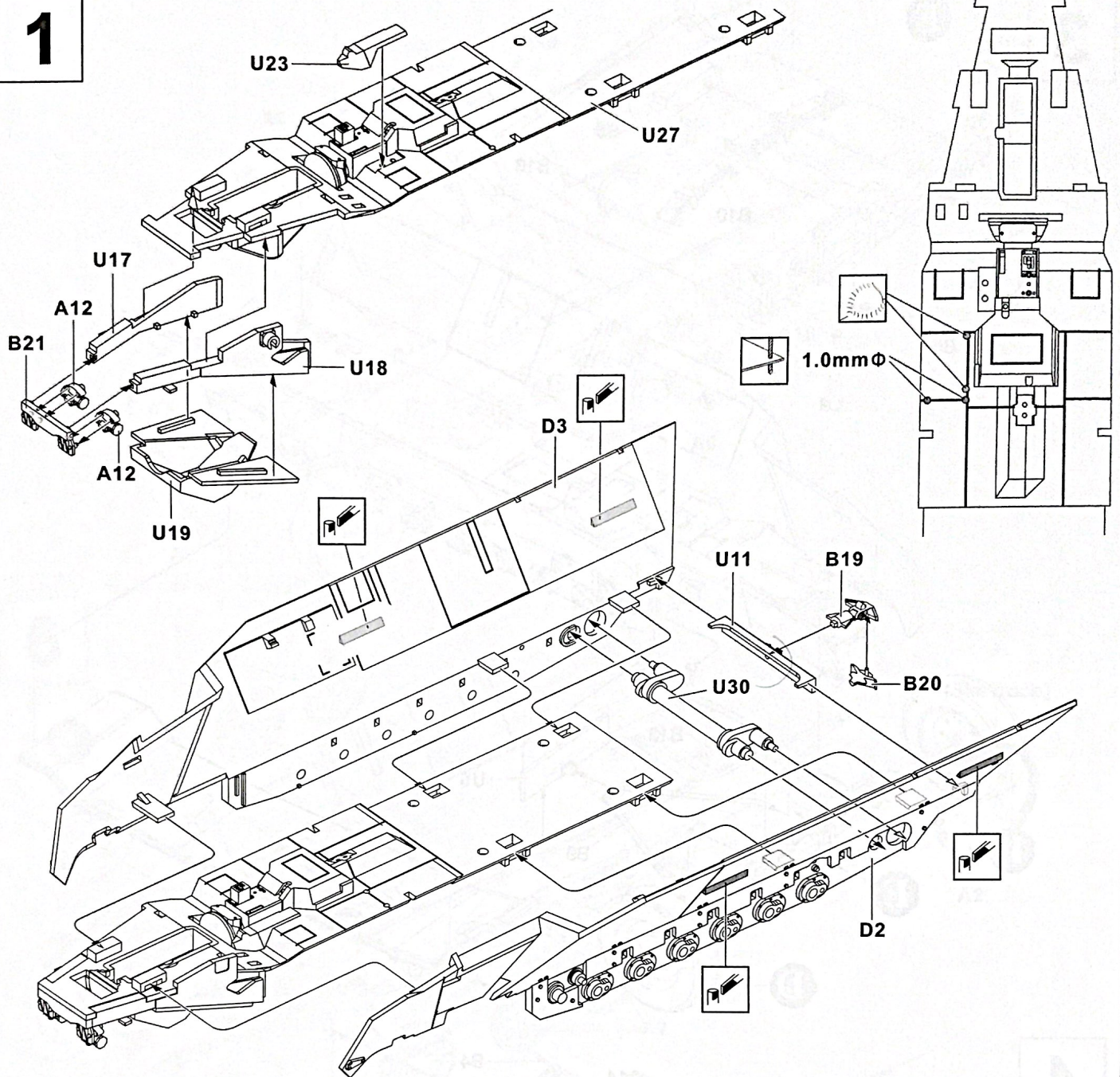
Color list: 塗料表

Color	Brand	GSI Creos			Humbrol	AV Vallejo	Lifecolor
		Hobby Color	Mr.Color	Mr.Color Spray			
Brass	黃銅		C219		54	70801	LC75
Dark yellow	深黃	H79	C39	S39	83	71420	UA081
Field gray(2)	原野灰	H48	C52		91	71038	UA051
Flat white	消光白	H11	C62	S62	34	70919	LC01
Metallic green	亮綠	H89	C77	S77	131	70969	
Red	紅	H3	C3	S3	19	70926	LC56
Red brown	紅褐	H47/H406	C41		160	71019	UA085
Pl M02 Gray	灰	H70	C60			71044	UA71
	黑鐵	H18	C28		53	77712	LC76
	輪胎黑	H77	C137		85	70950	LC02
	FS30140 木棕	H37	C43		169	71035	UA85

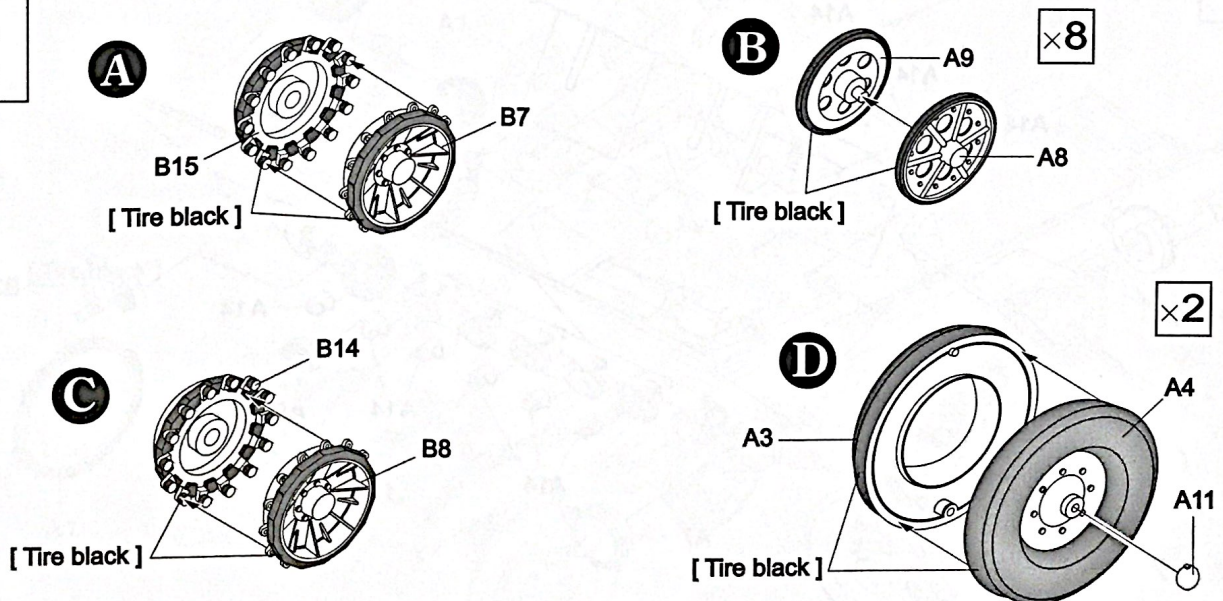
UB Sd.Kfz.251 track set (1:35 scale)

Early-modle	Late-modle	Latest-modle (Steel type)	Latest-modle (Rubber type)
AF 35044	AF 35069	AF 35070	AF 35081

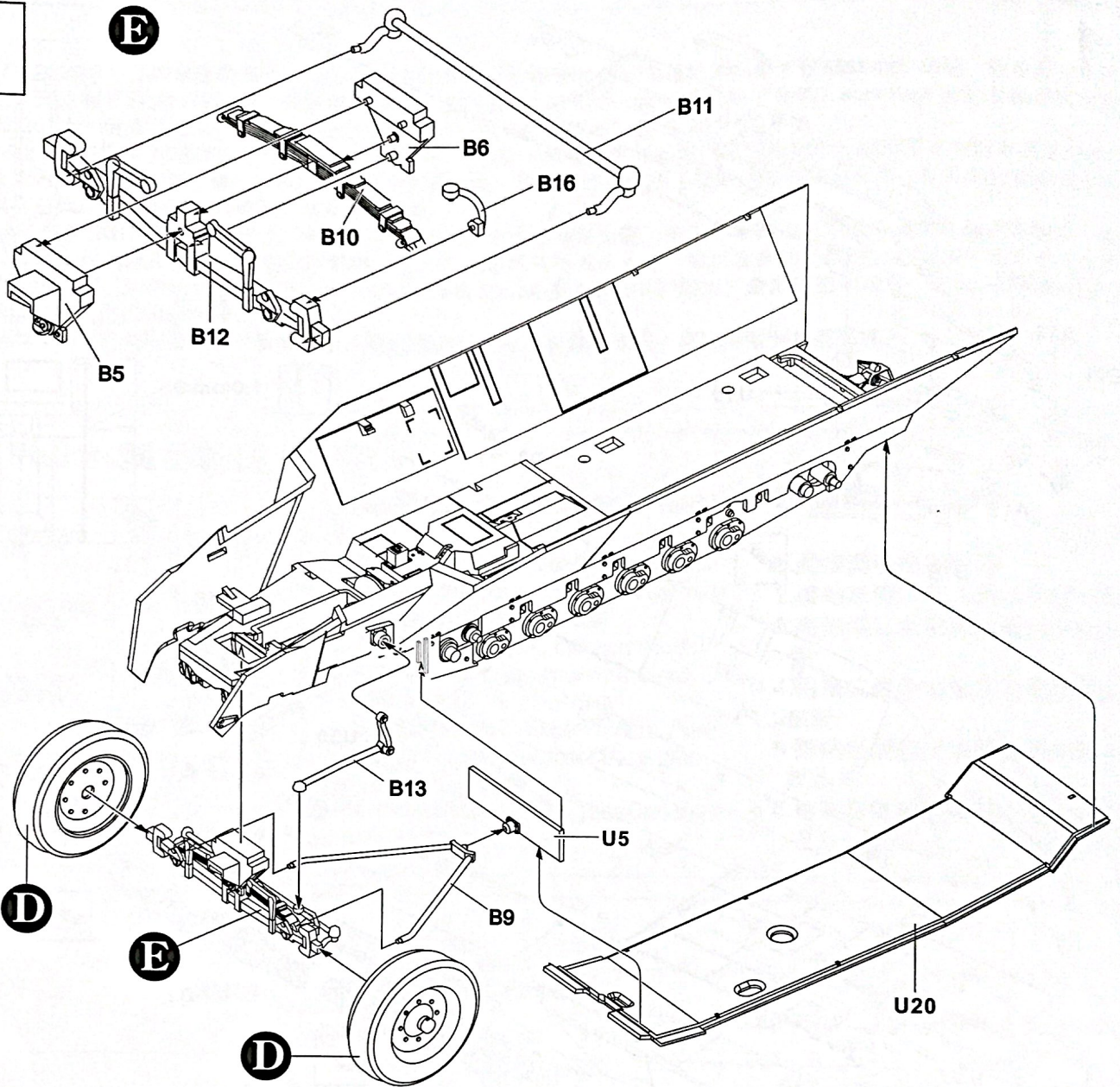
1



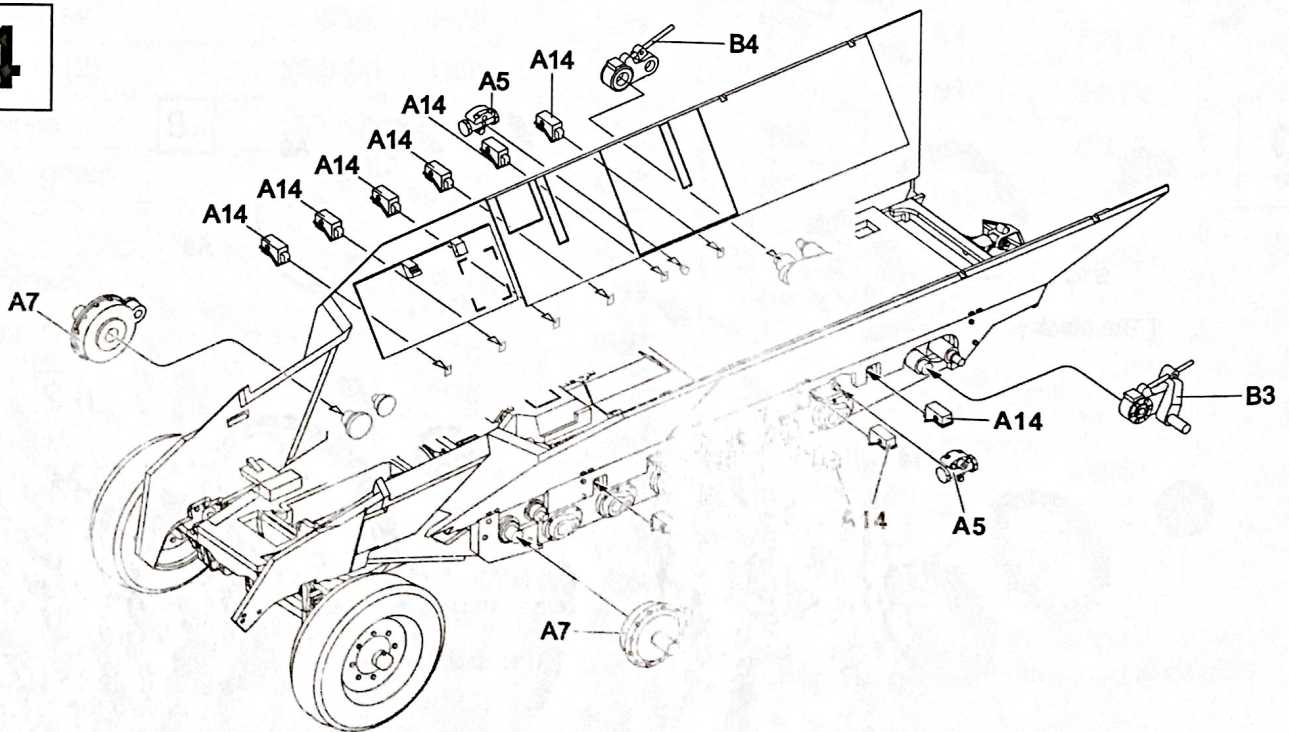
2



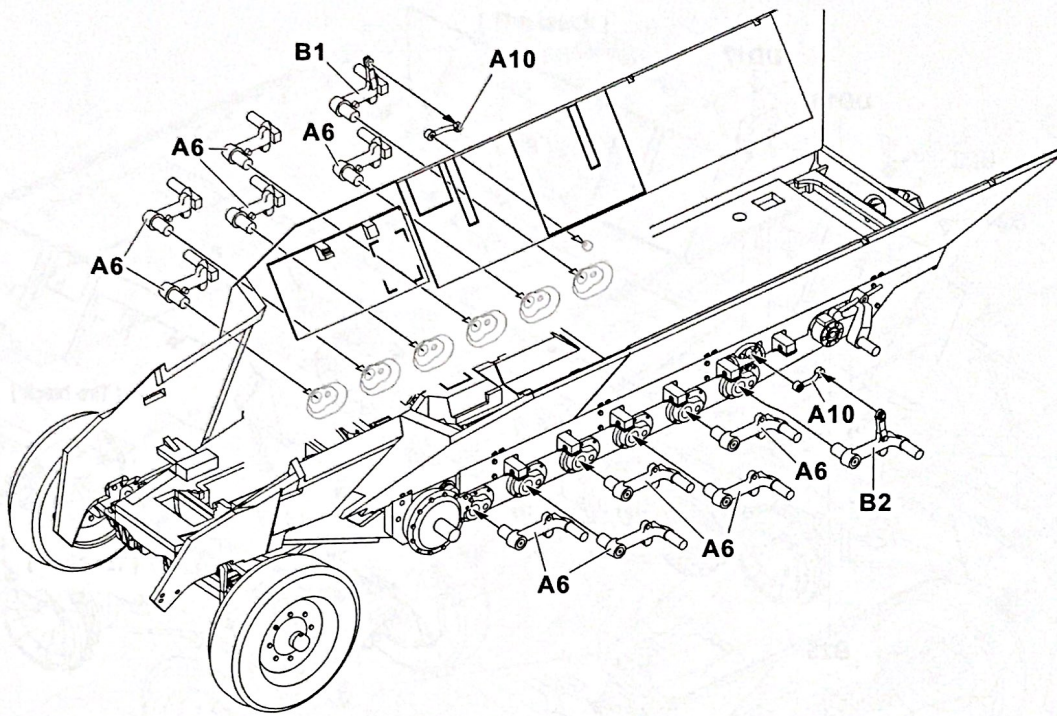
3



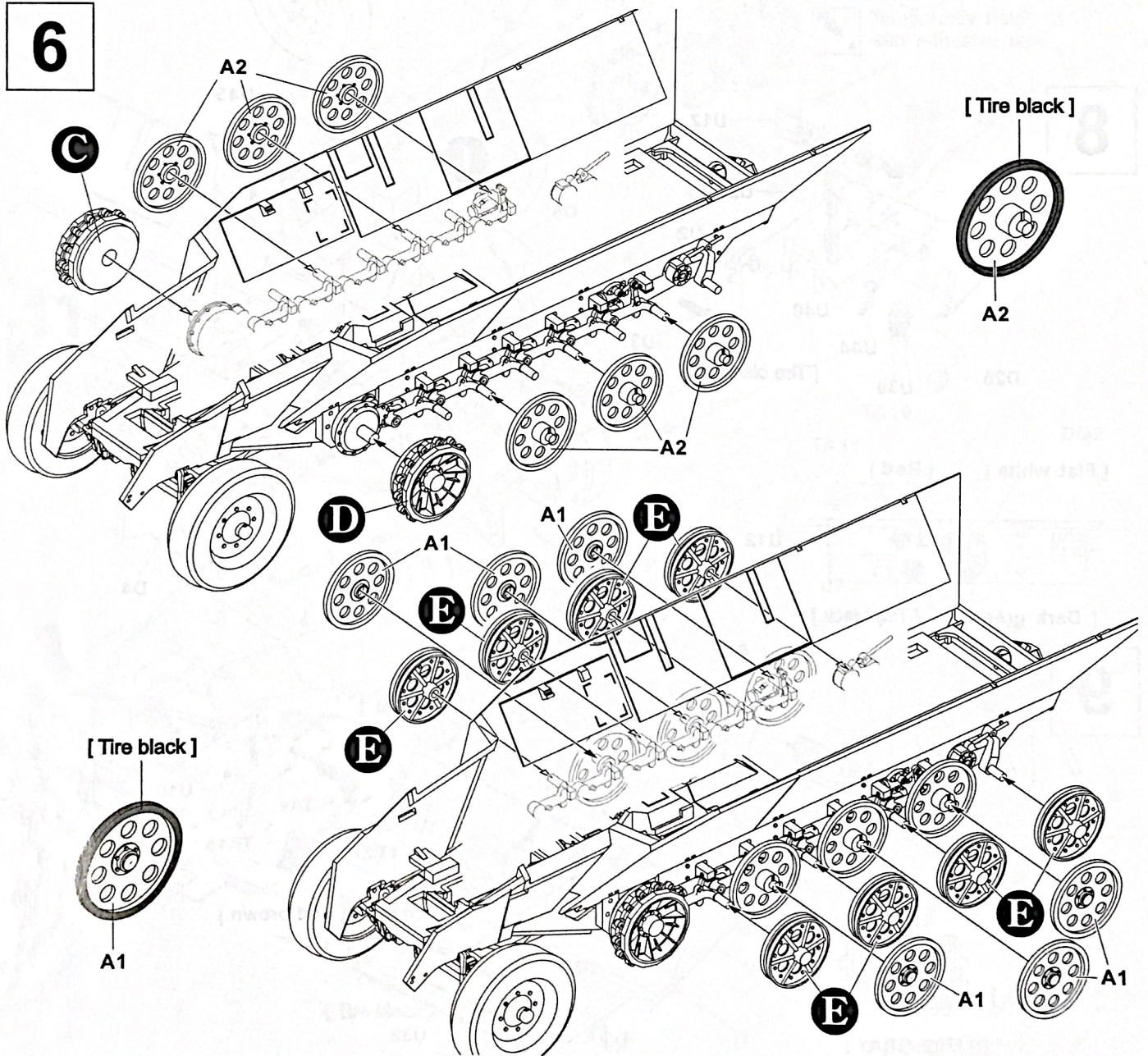
4



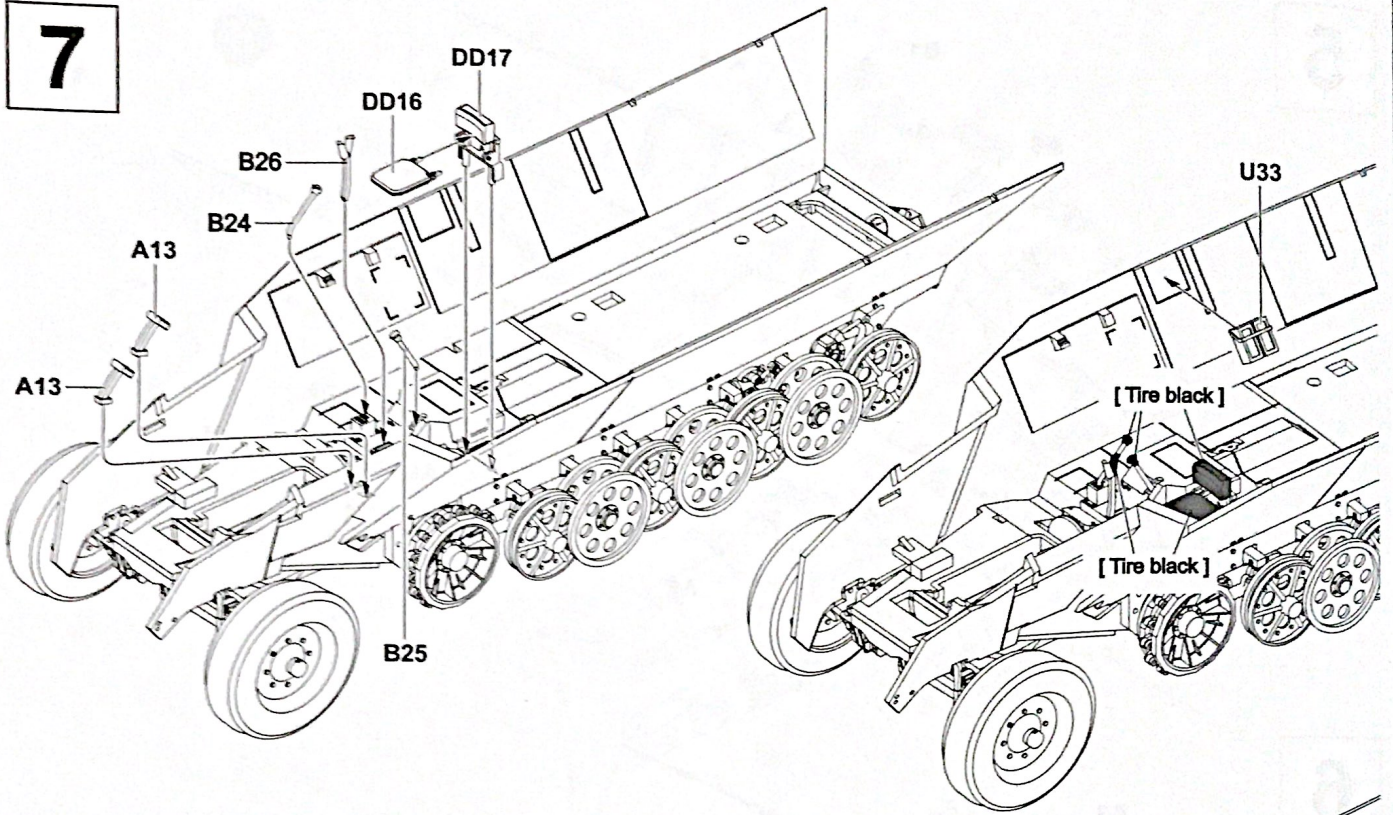
5



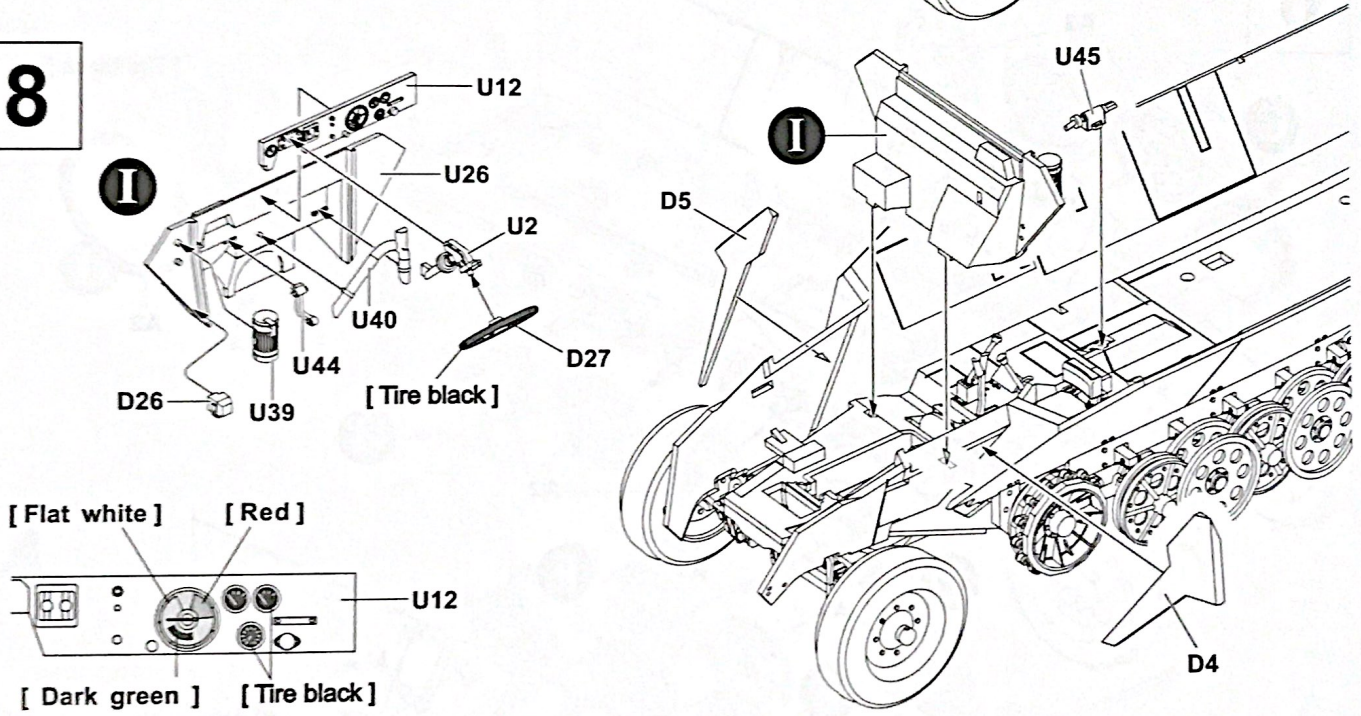
6



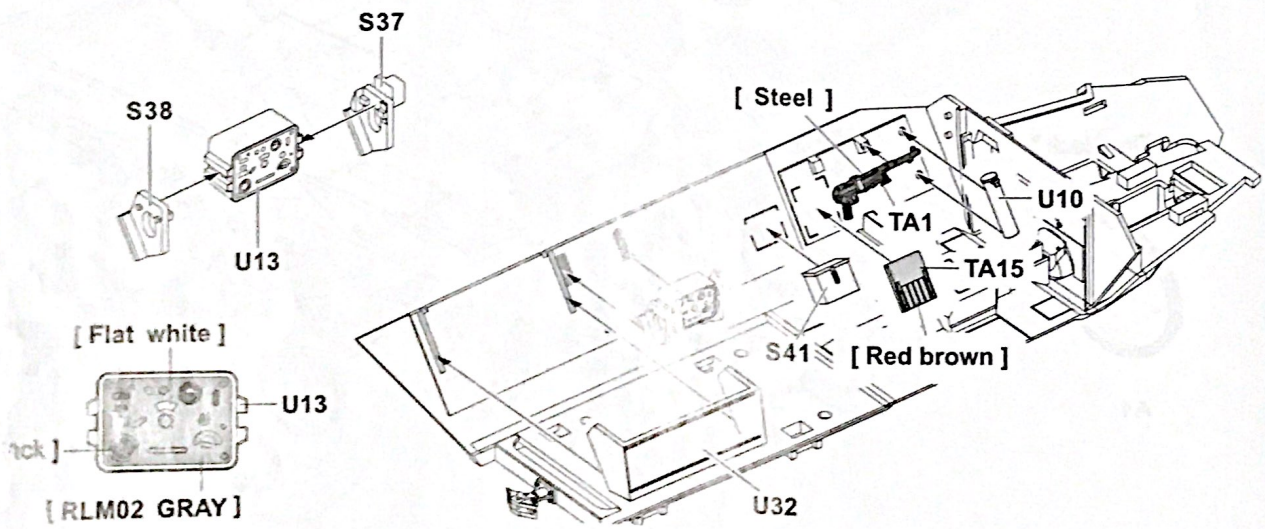
7



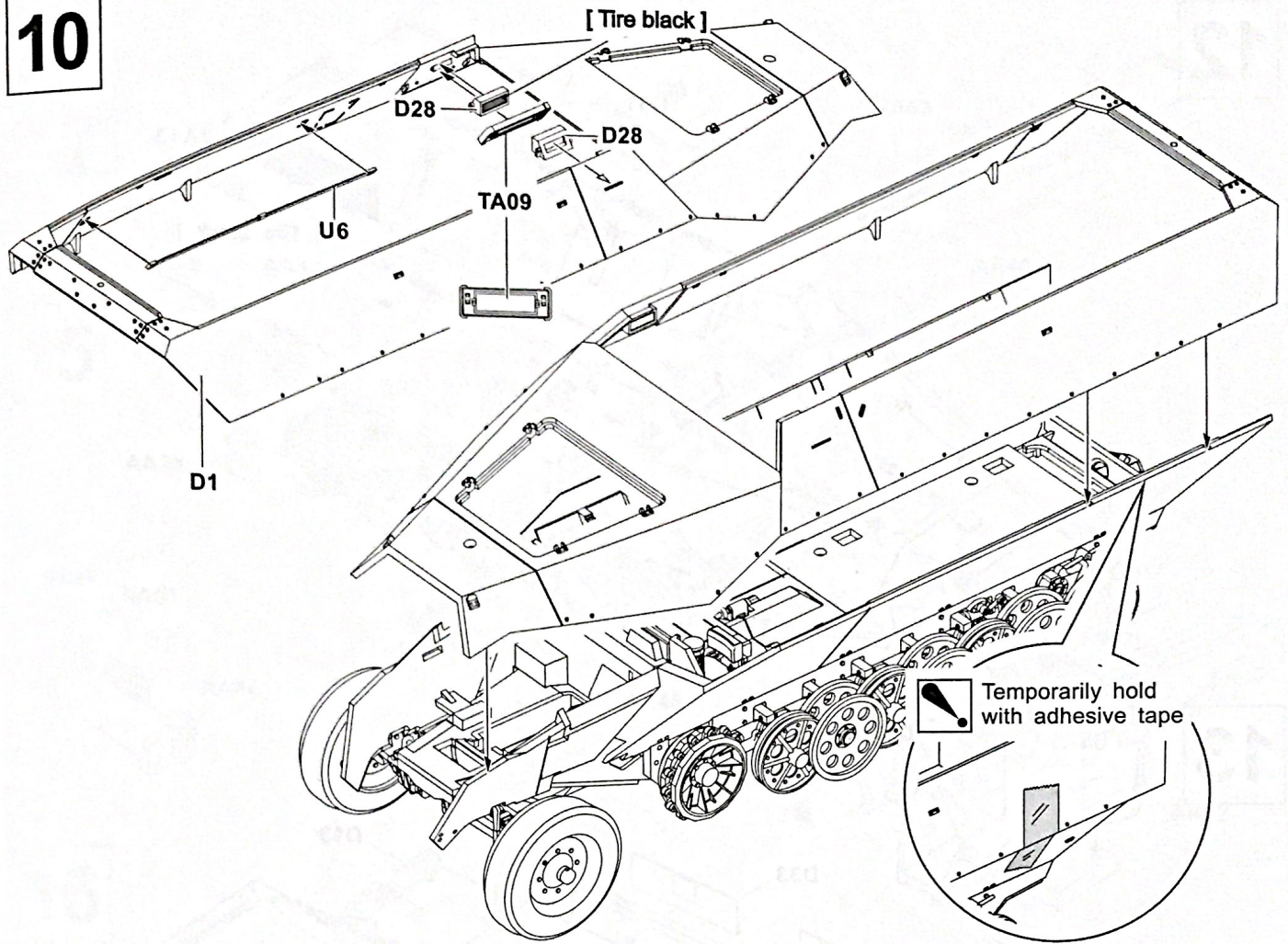
8



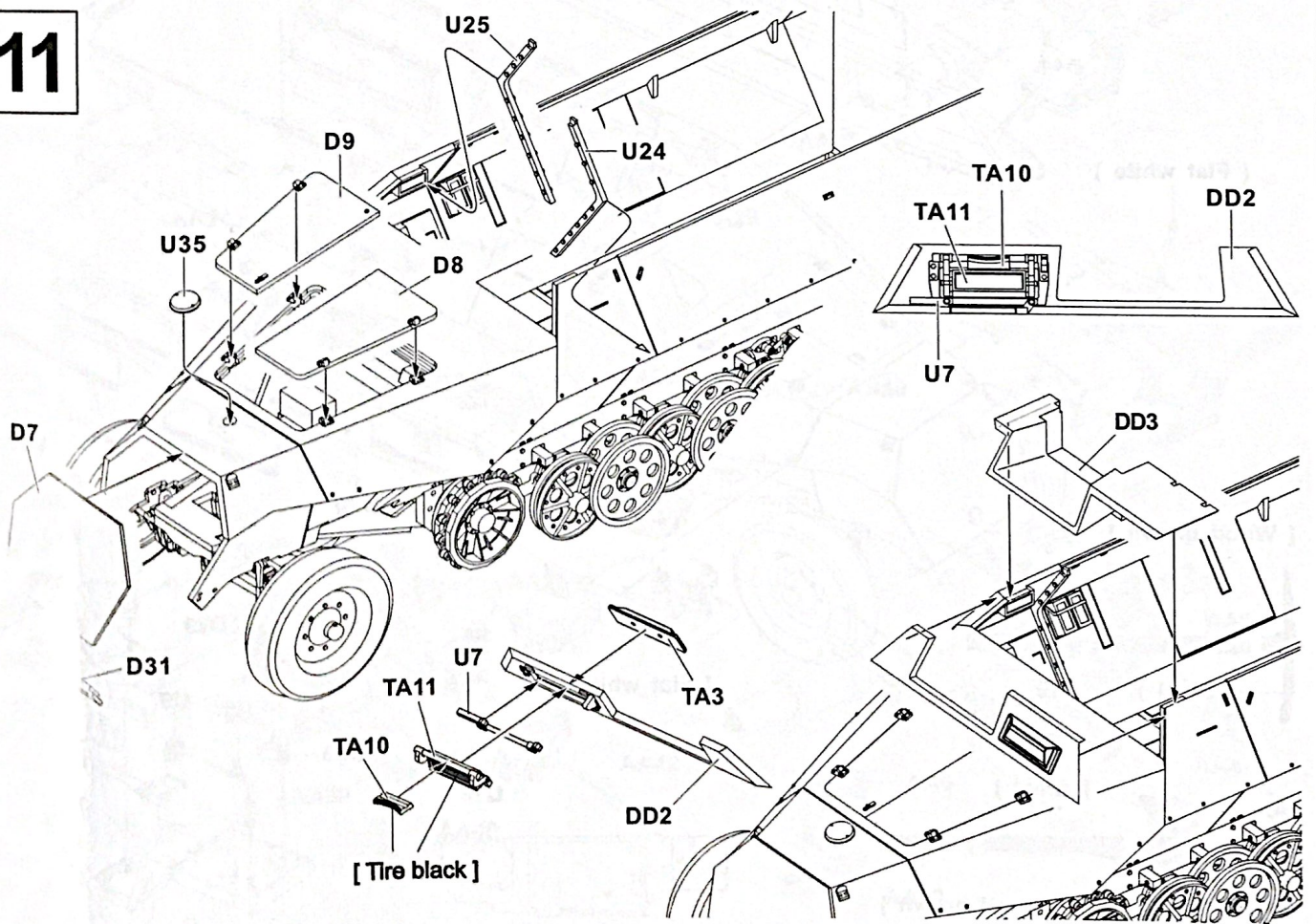
9



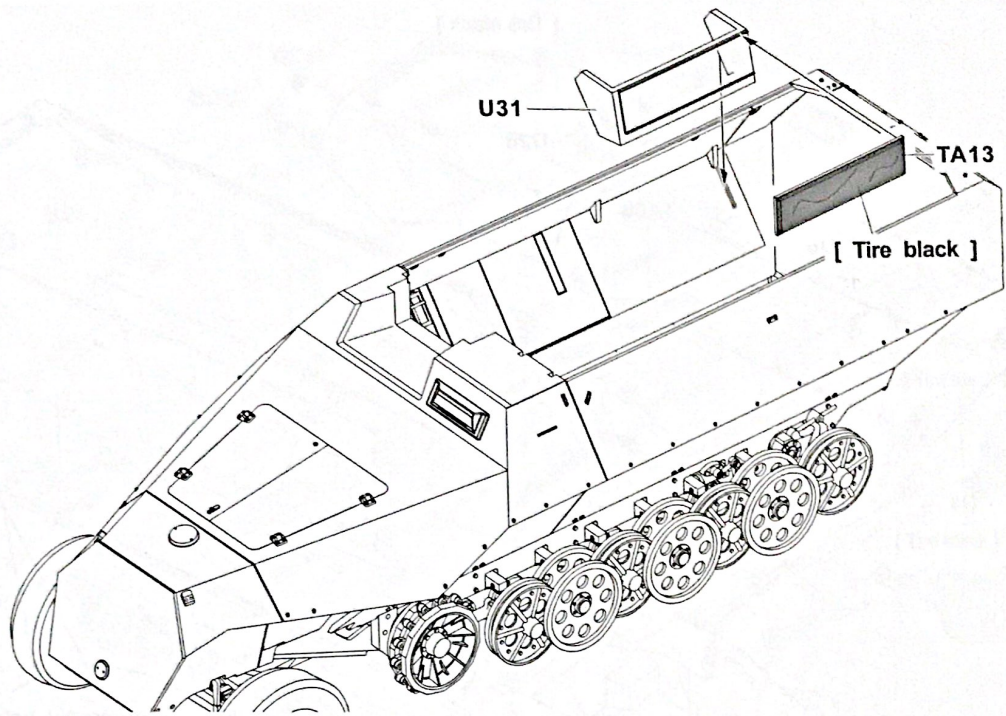
10



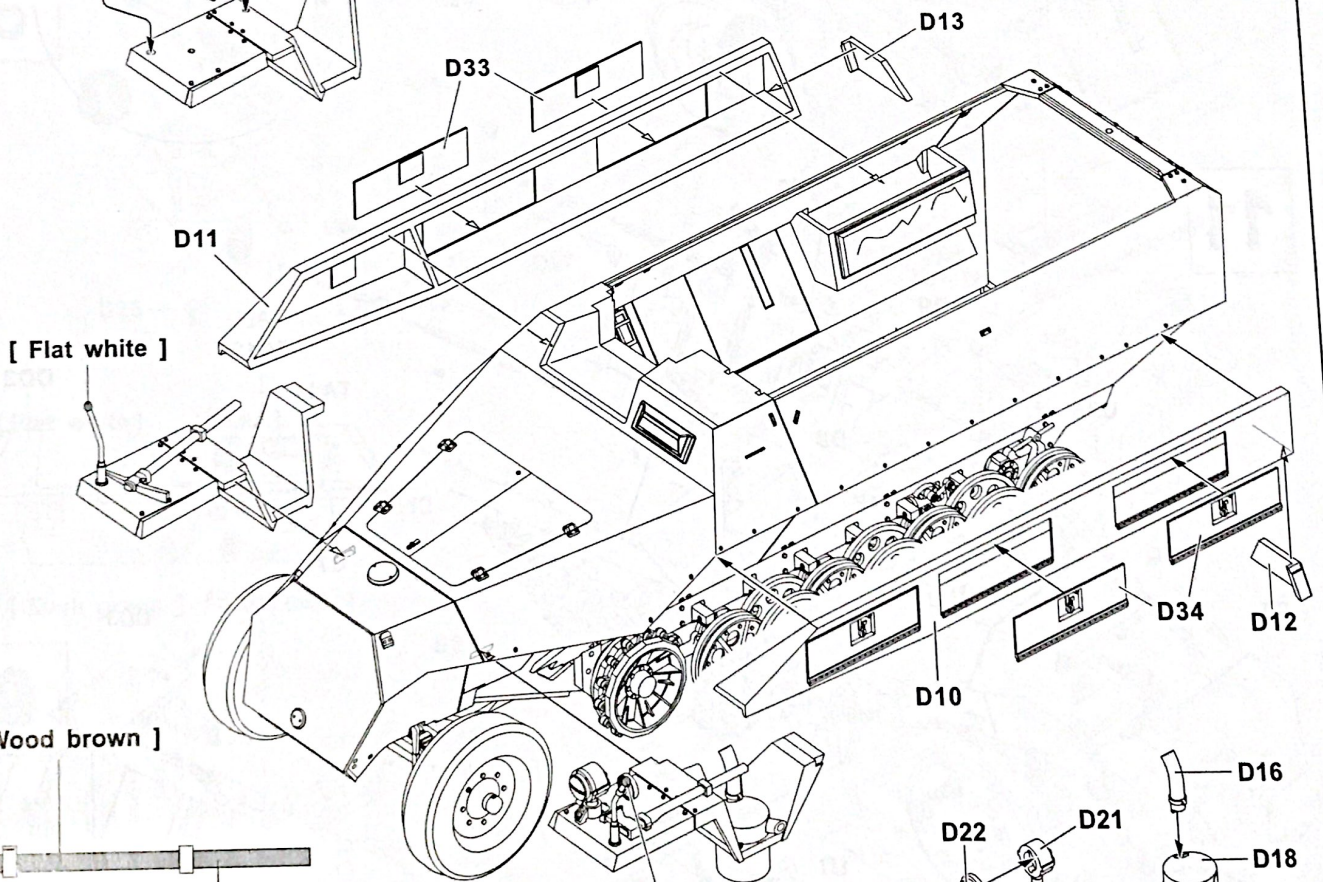
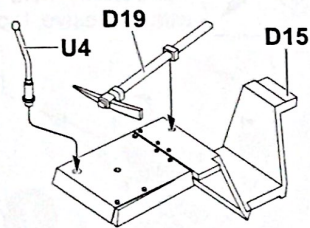
11



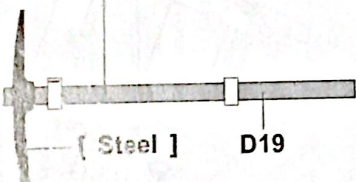
12



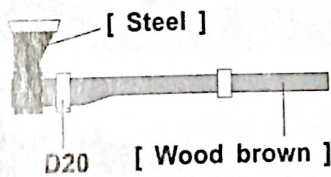
13



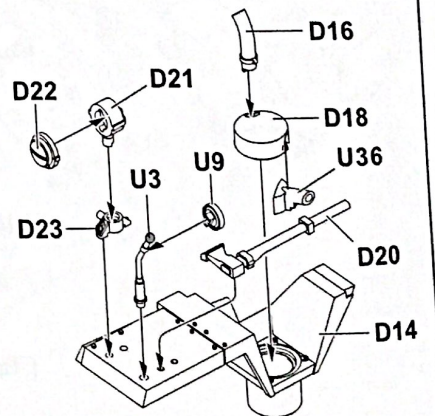
[Wood brown]



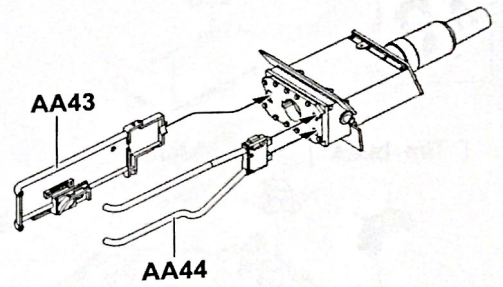
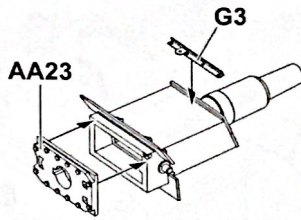
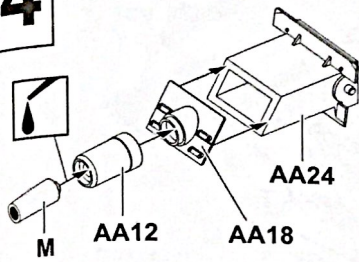
[Flat white]



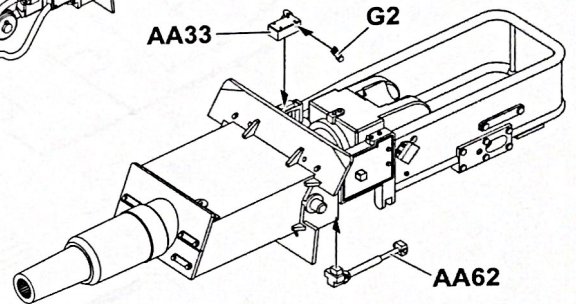
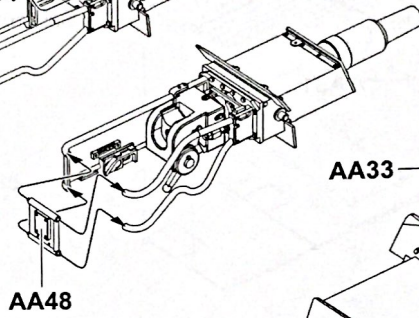
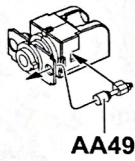
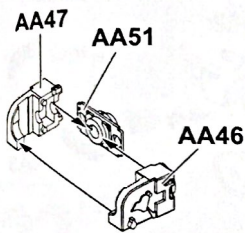
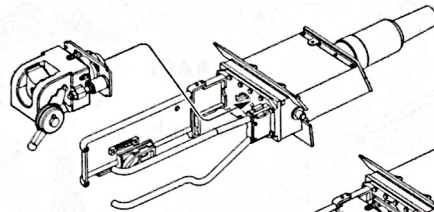
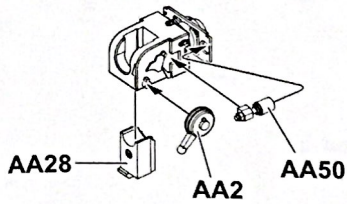
D14



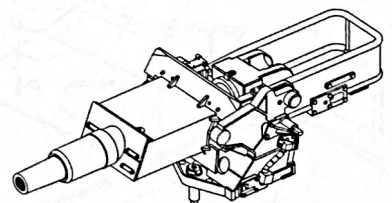
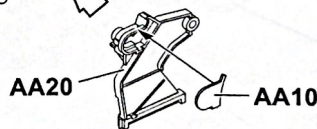
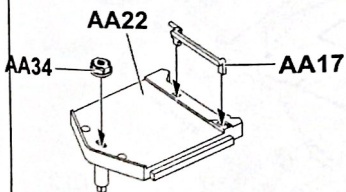
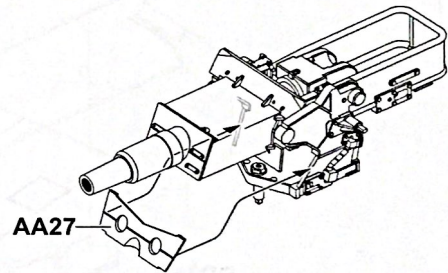
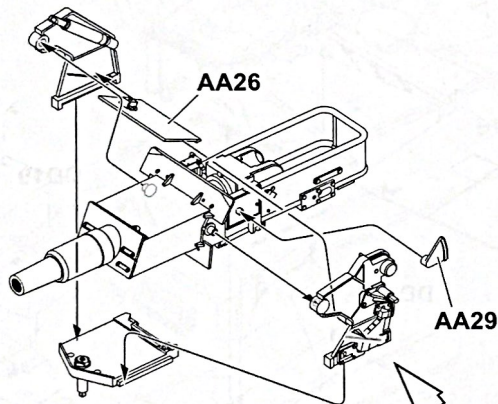
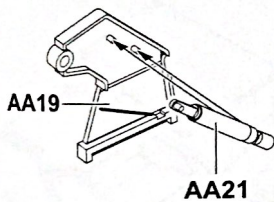
14



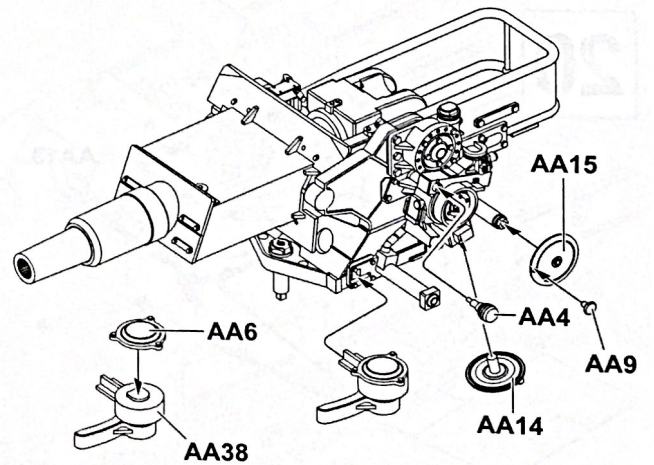
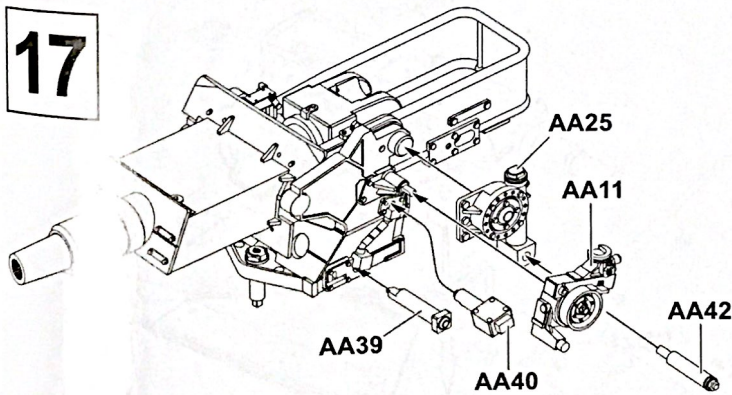
15



16

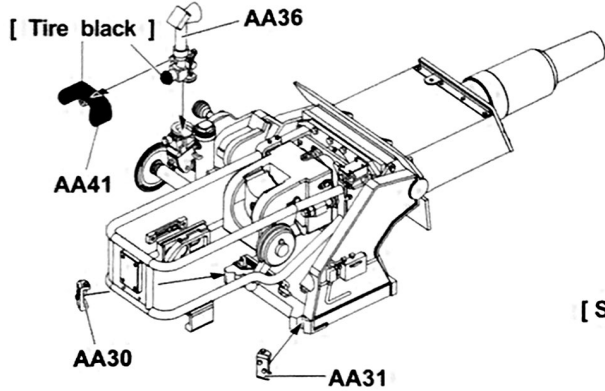


17

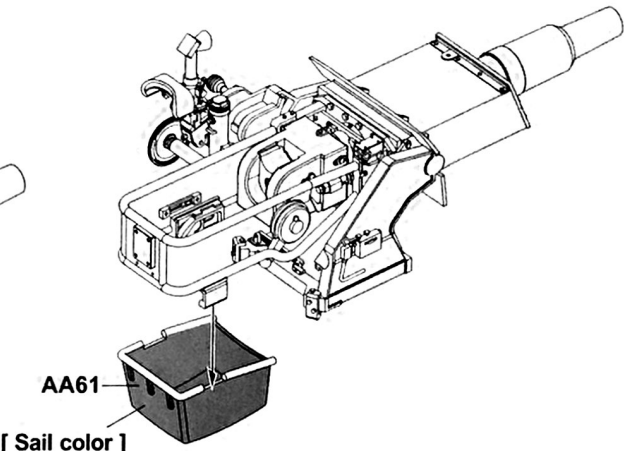


18

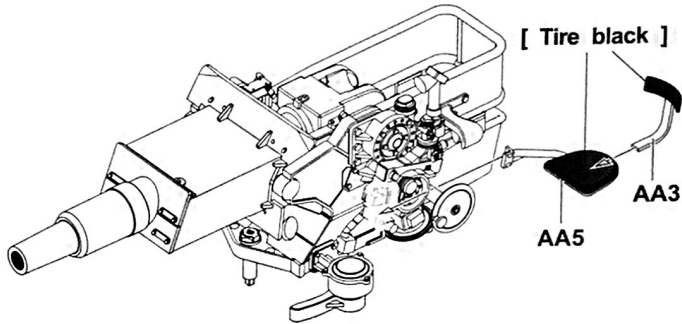
[Tire black]



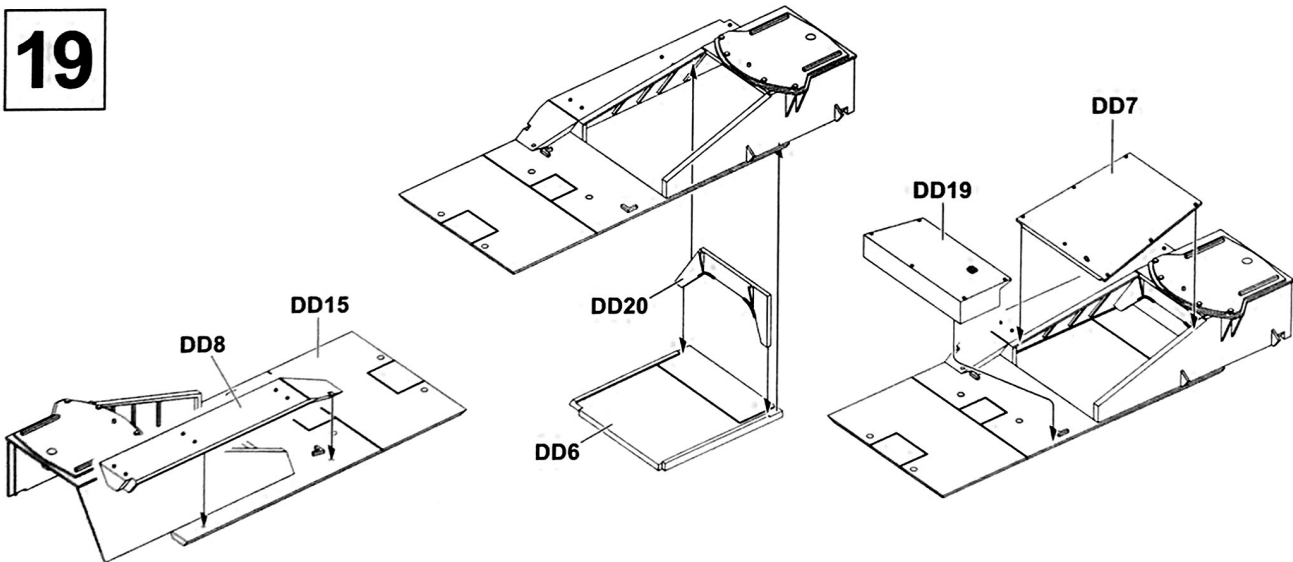
AA61
[Sail color]



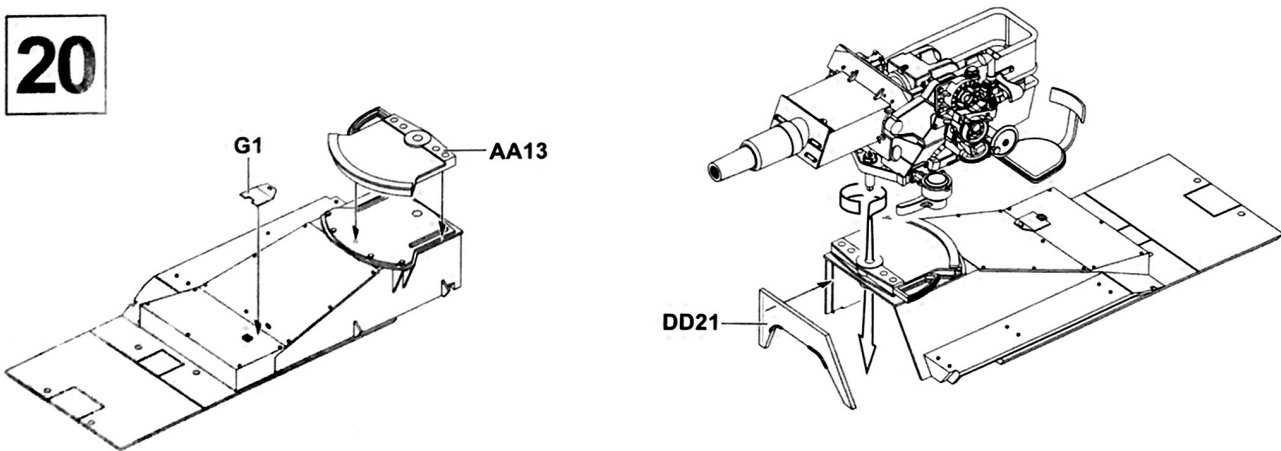
[Tire black]



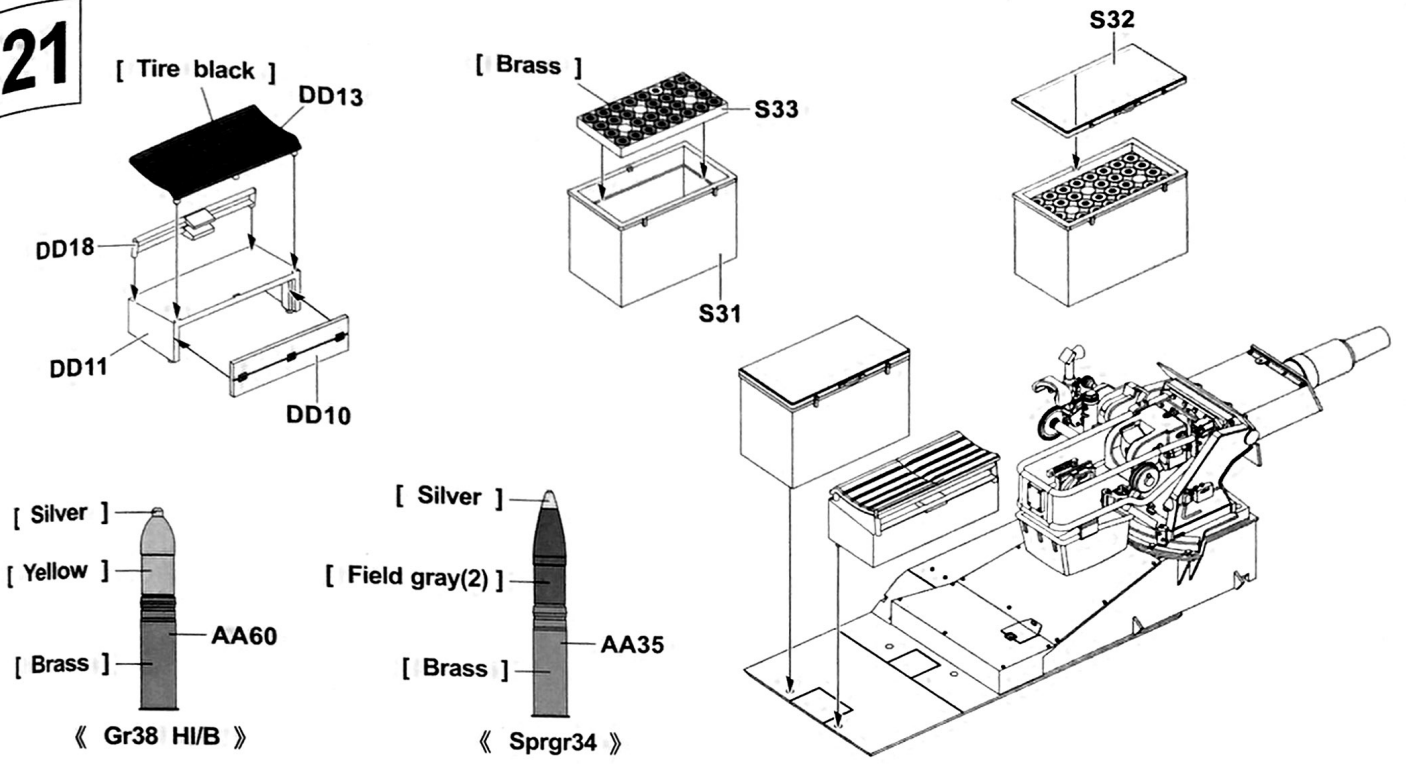
19



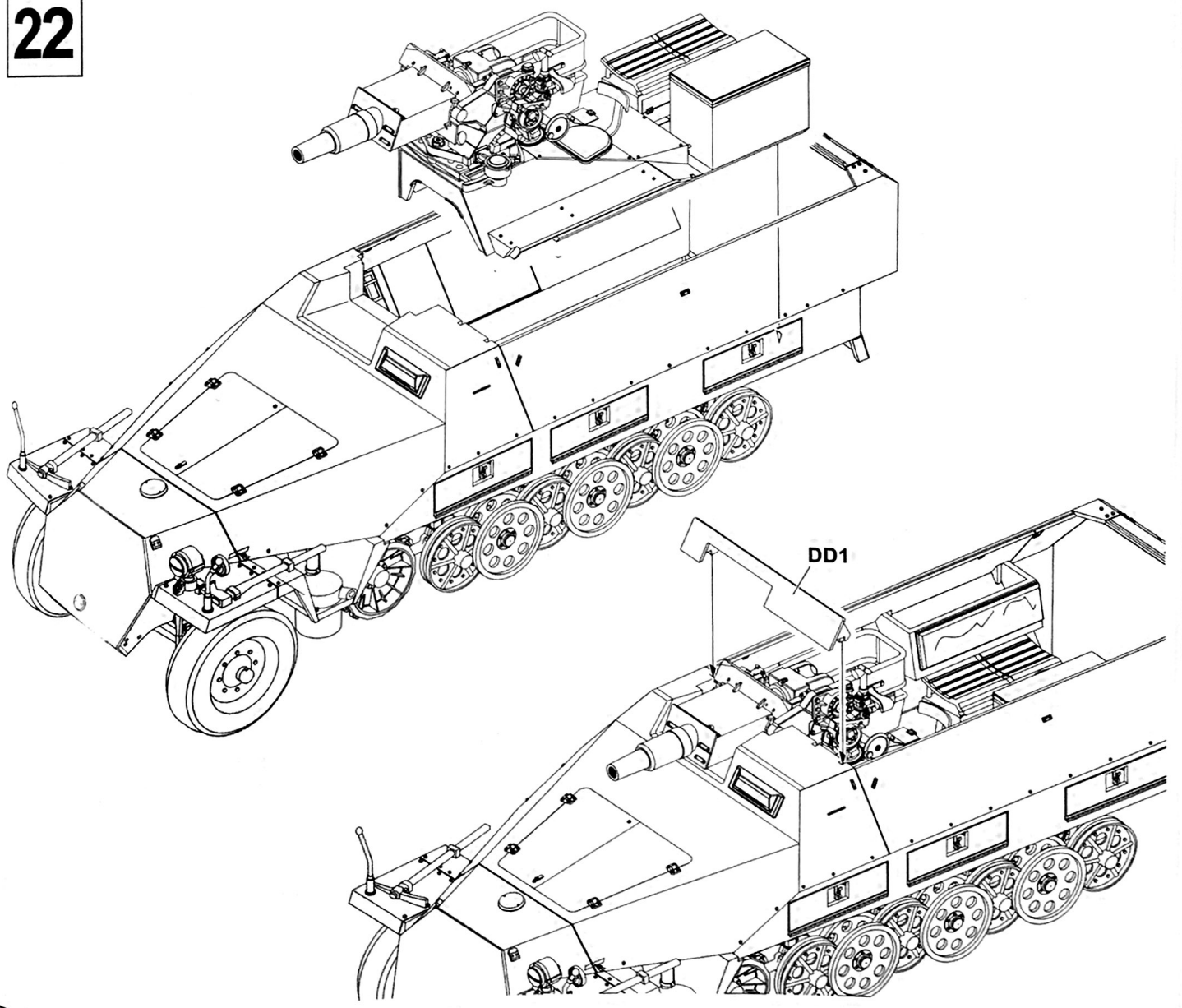
20



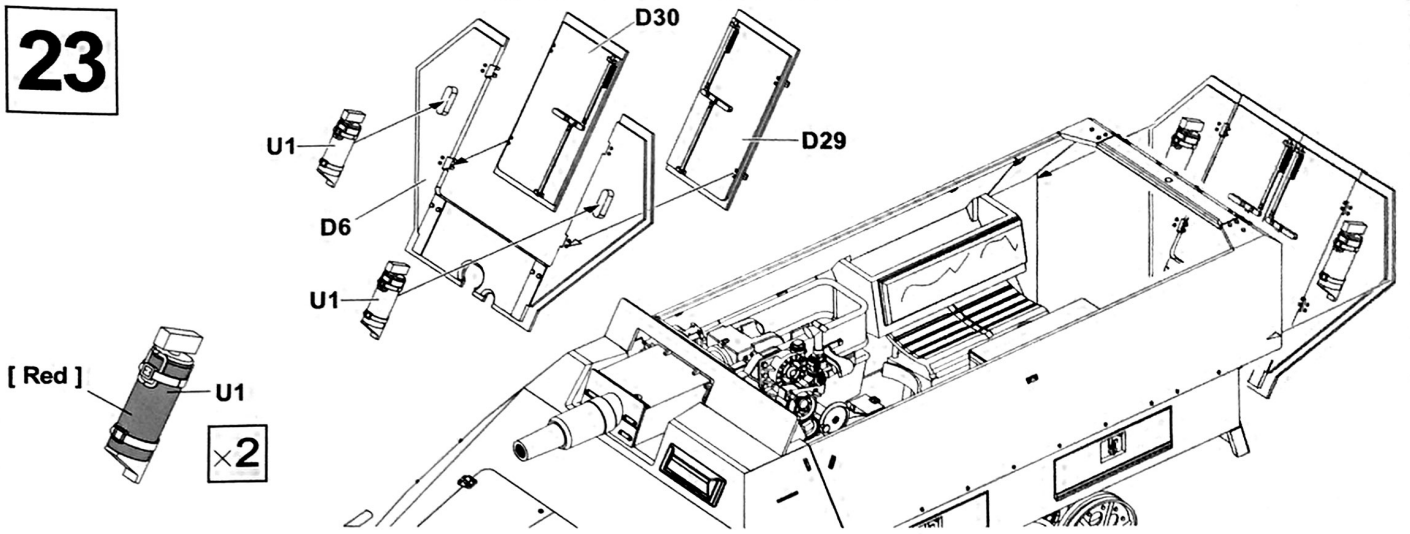
21



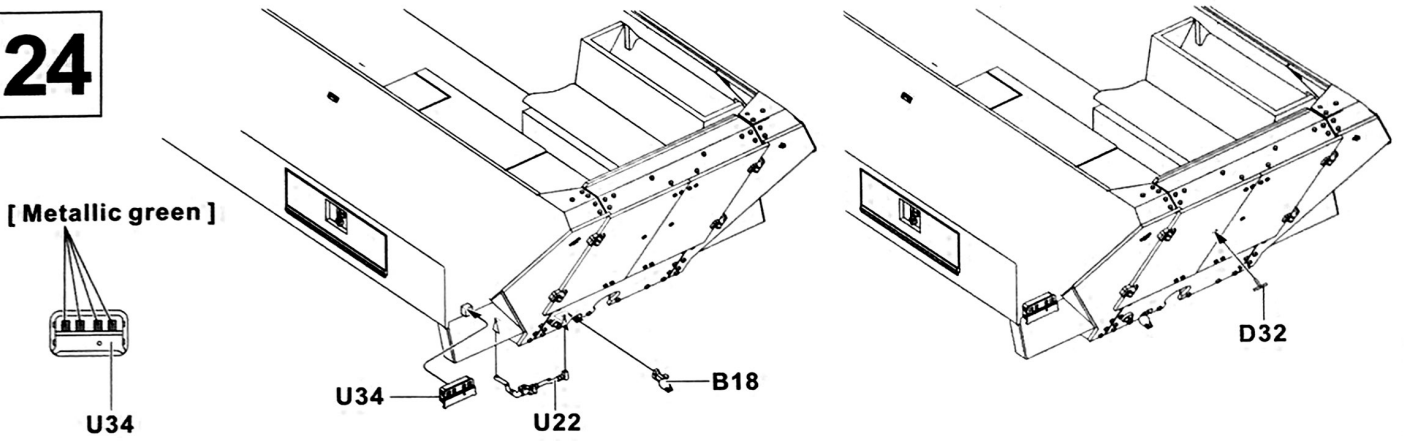
22



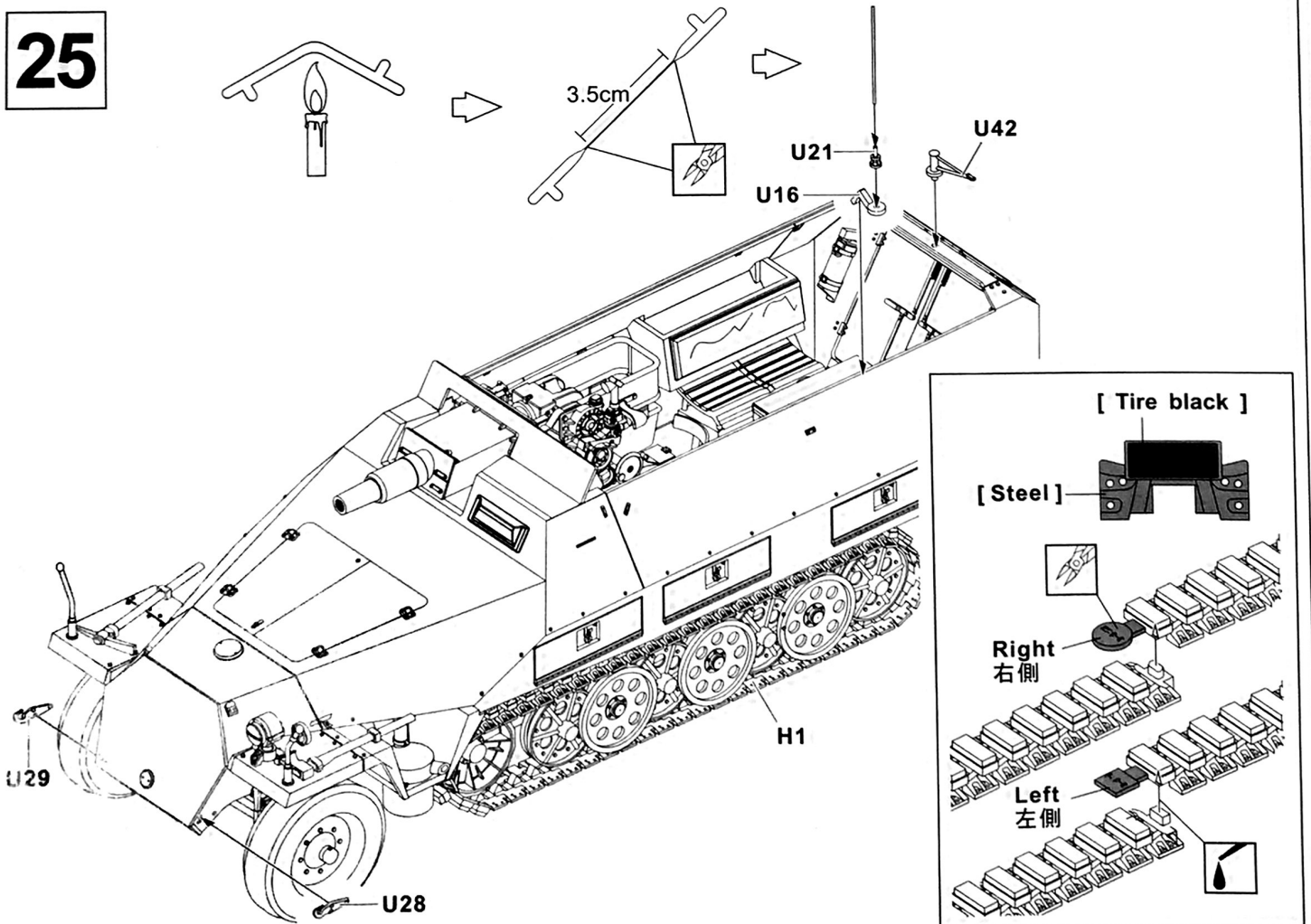
23



24

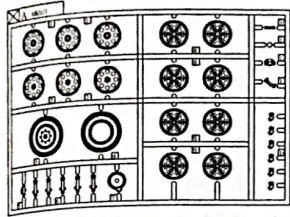


25

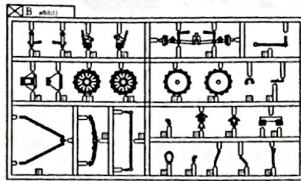


PARTS LIST 零件表

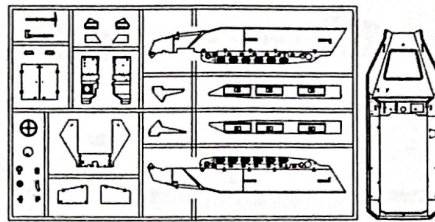
AX2 AF 35040



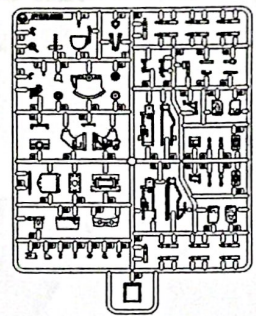
BX1 AF 35113



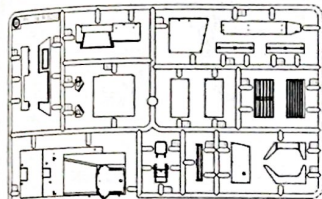
DX1 AF 35063



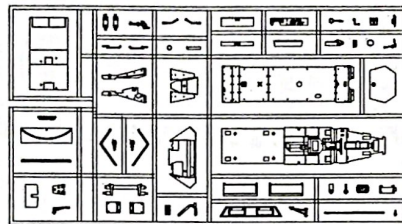
AA X1 AF 35233



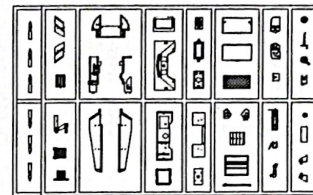
DDX1 AF 35251



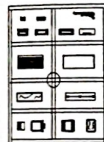
UX1 AF 35063



SX1 AF 35068



TAX1 AF 35063



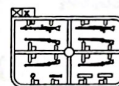
HX1 AF 35040



MX1 AF 35251



XX1 AF 35054



GX1 AF 35251



JX1 AF 35278



Instructions:

If for some reason, you are not fully satisfied or have questions concerning our product; Please use the form provide, and send it to our nearest representative or mail it directly to our office.

We will deal with that A.S.A.P.



AF 35278 Parts Replacement Form

- | | |
|-------------------------------------|--------------------------------------|
| <input type="checkbox"/> AF 35040-A | <input type="checkbox"/> AF 35068-S |
| <input type="checkbox"/> AF 35040-B | <input type="checkbox"/> AF 35063-U |
| <input type="checkbox"/> AF 35063-D | <input type="checkbox"/> AF 35054-X |
| <input type="checkbox"/> AF 35251-G | <input type="checkbox"/> AF 35233-AA |
| <input type="checkbox"/> AF 35040-H | <input type="checkbox"/> AF 35251-DD |
| <input type="checkbox"/> AF 35278-J | <input type="checkbox"/> AF 35063-TA |
| <input type="checkbox"/> AF 35251-M | |

Reason for replacement: Missing
 Broken

限臺灣地區使用 For Taiwanese use only!



AF 35278 零件補充申請表

申請人
姓名 地址 電話

- | | |
|--------------------------------------|----------|
| <input type="checkbox"/> AF 35040-A | NT\$ 280 |
| <input type="checkbox"/> AF 35040-B | NT\$ 120 |
| <input type="checkbox"/> AF 35063-D | NT\$ 180 |
| <input type="checkbox"/> AF 35251-G | NT\$ 160 |
| <input type="checkbox"/> AF 35040-H | NT\$ 160 |
| <input type="checkbox"/> AF 35278-J | NT\$ 160 |
| <input type="checkbox"/> AF 35251-M | NT\$ 100 |
| <input type="checkbox"/> AF 35068-S | NT\$ 120 |
| <input type="checkbox"/> AF 35063-U | NT\$ 160 |
| <input type="checkbox"/> AF 35054-X | NT\$ 50 |
| <input type="checkbox"/> AF 35233-AA | NT\$ 260 |
| <input type="checkbox"/> AF 35251-DD | NT\$ 180 |
| <input type="checkbox"/> AF 35063-TA | NT\$ 60 |

+郵寄費 _____ NT\$ 80

(請填)總計NT\$ _____

零件補充原因:(請於 打)

原包裝即 遺失或 毀損,

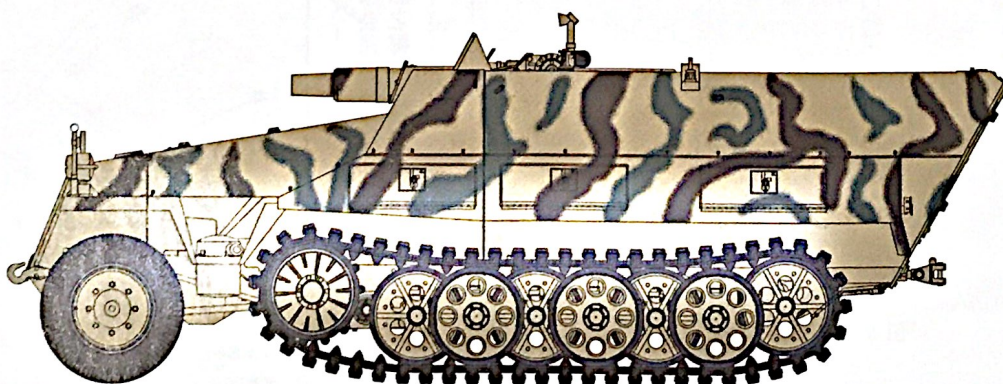
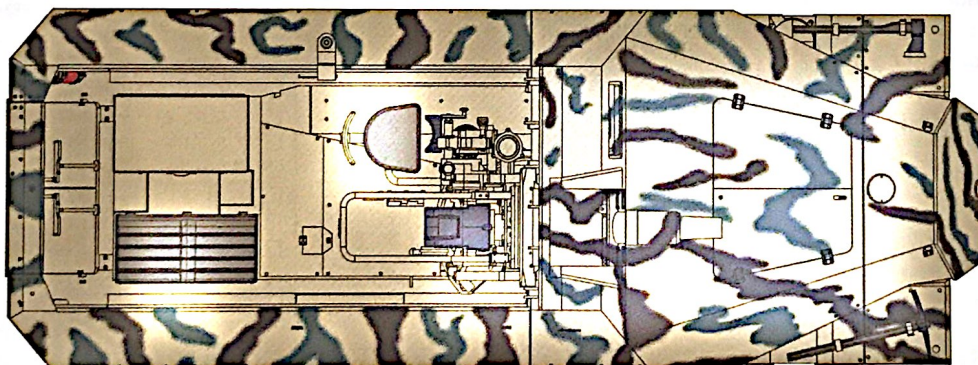
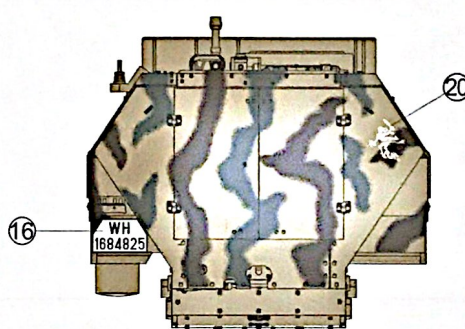
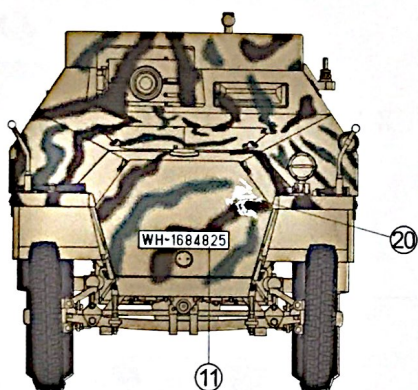
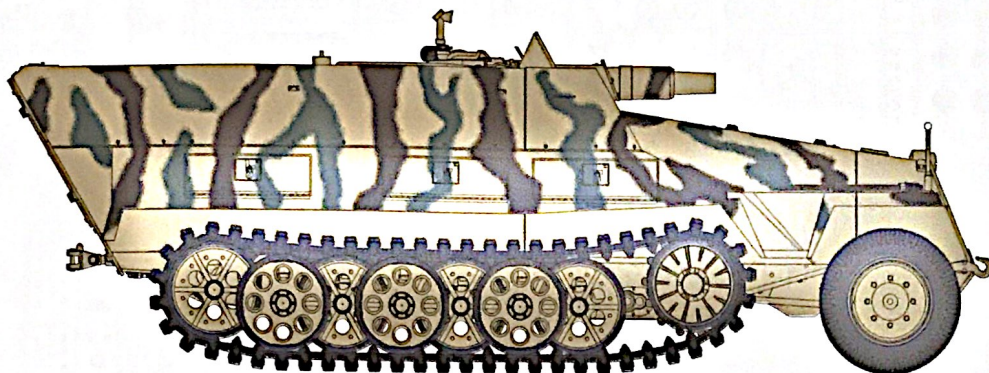
製作途中 遺失或 毀損,

其他原因 _____

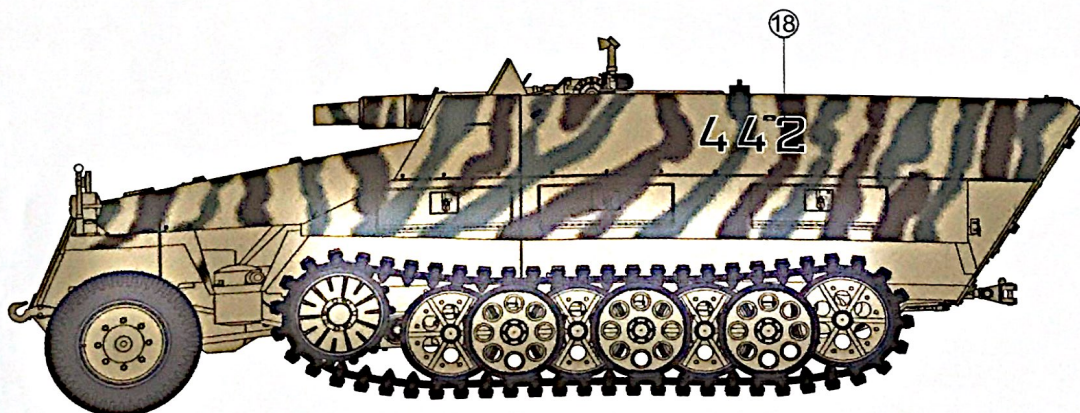
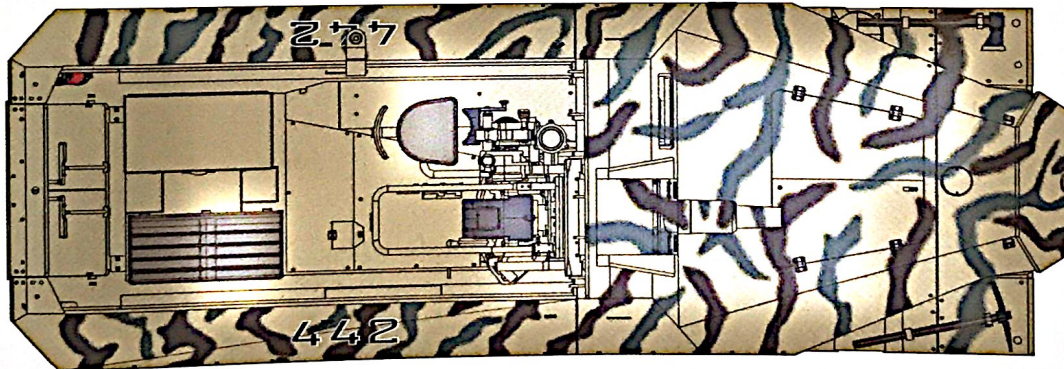
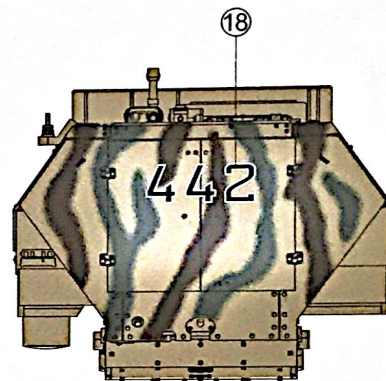
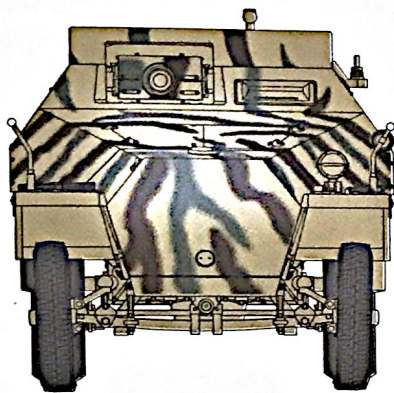
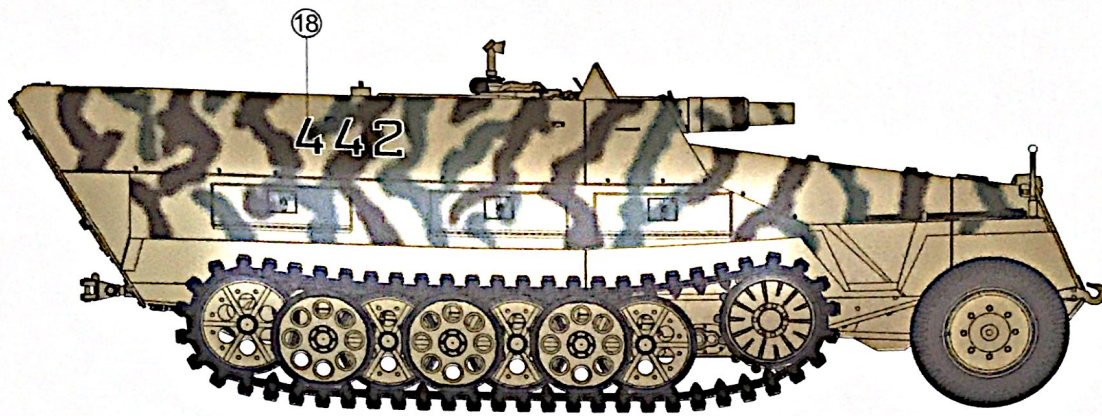
總代理: 戰鷹企業有限公司收本公司將儘速為您處理。
請將本表與該部品相同金額之郵政匯票一同寄至。

A 11th Panzer Division, Haute-Saône, France, Sep. 1944.
第十一裝甲師,法國,上索恩省,1944年九月。

 Body Color:  Dark yellow  Field gray(2)  Red brown

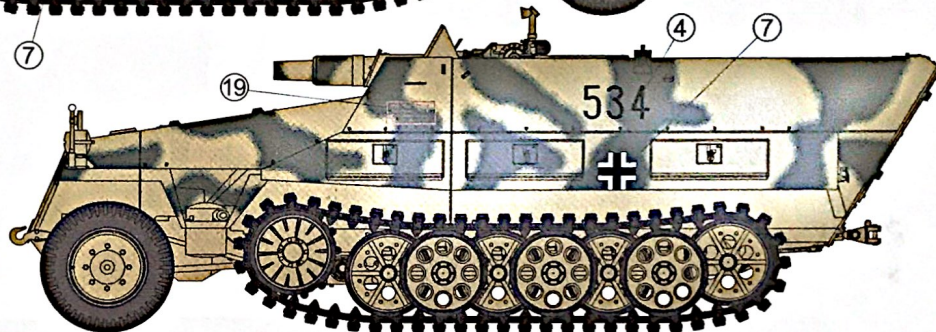
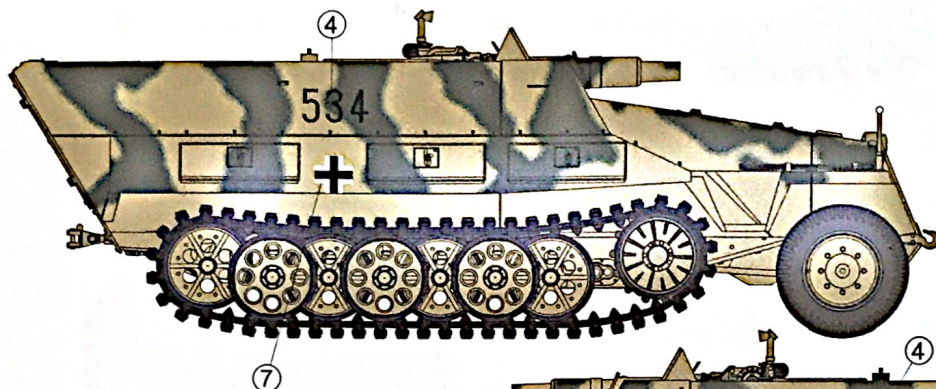
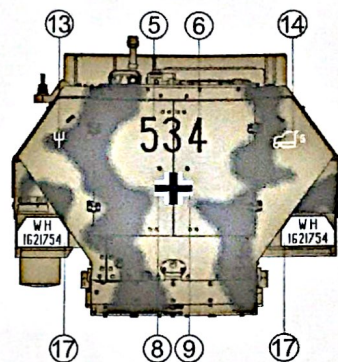
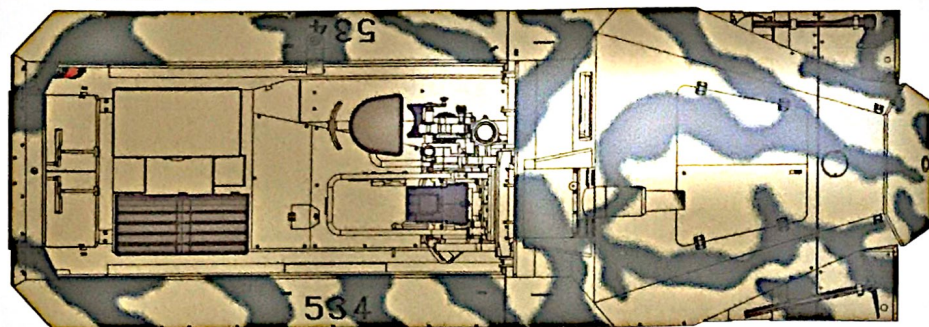


B  Body Color:  Dark yellow  Field gray(2)  Red brown




C 2nd Panzer Division, France, 1944.
 第二装甲师, 法国境内, 1944年。

Body Color:  Dark yellow  Field gray(2)



D 9th SS-Panzer Division, Poland, Apr. 1944.
 第九党卫装甲师, 波兰境内, 1944年4月。

Body Color:  Dark yellow

