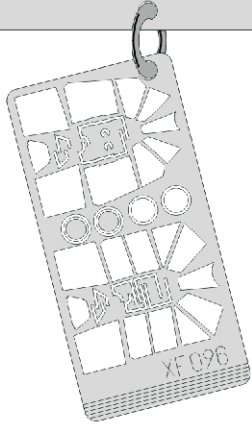


eduard
Express Mask

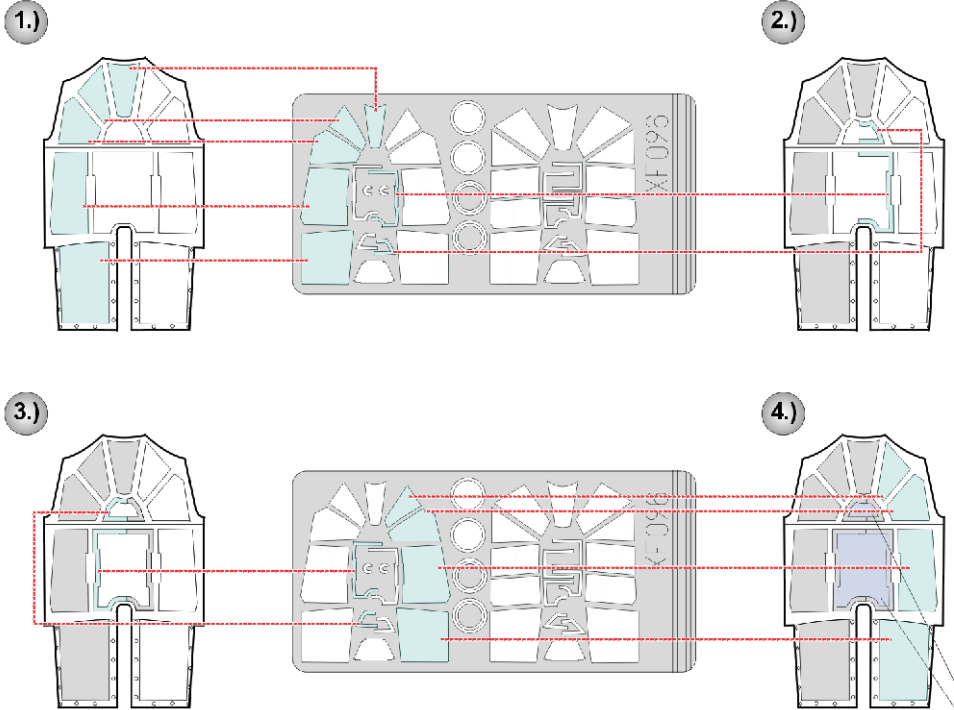
XF 096

J2M Raiden

The die-cut mask for accurate canopy frame painting of the
Hasegawa 1/48 KIT

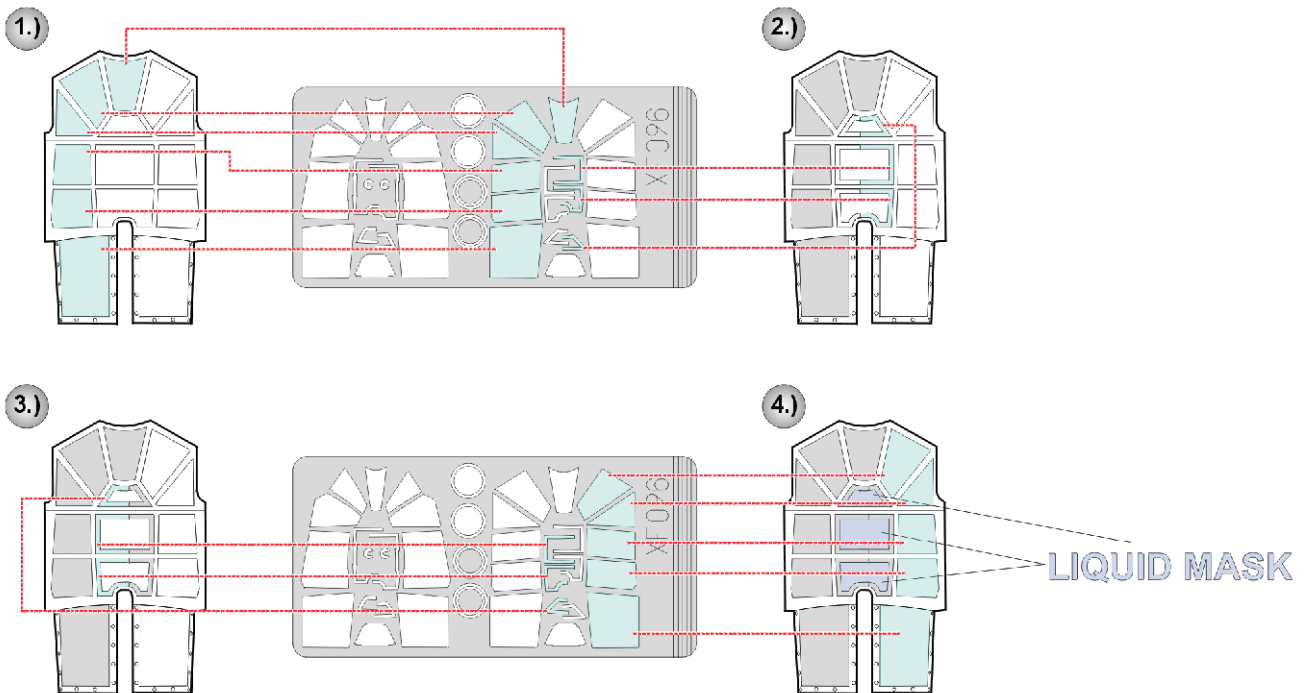


Q 1 (J2M3)

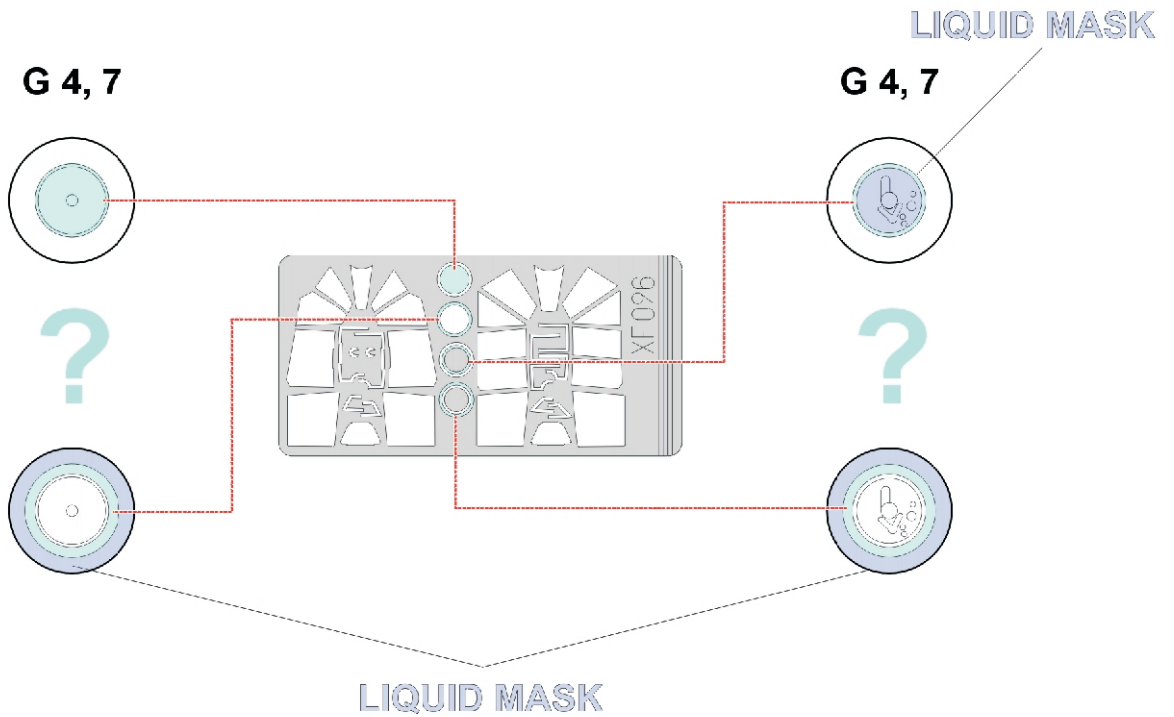
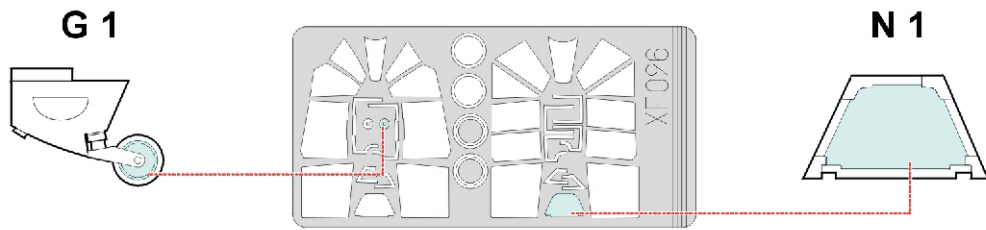
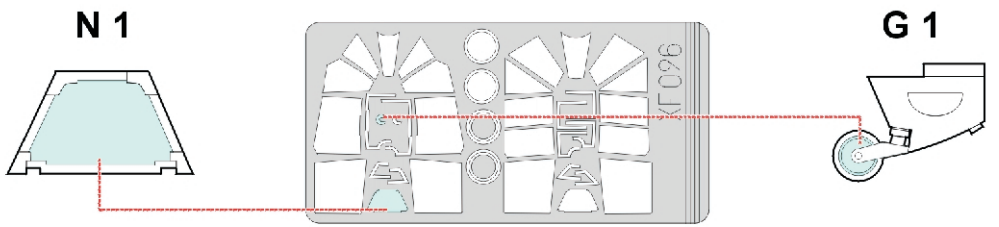


LIQUID MASK

R 1 (J2M6)



LIQUID MASK



REFERENCES: Maru Mechanic # 43 - J2M Raiden
 Bunrin-do, FAOW # 61 - J2M Raiden
 Model Art # 470 - J2M Raiden