



Bristol F.2B Fighter The Crocodile

ATTENTION * UPOZORNĚNÍ * ACHTUNG * ATTENTION * 注意

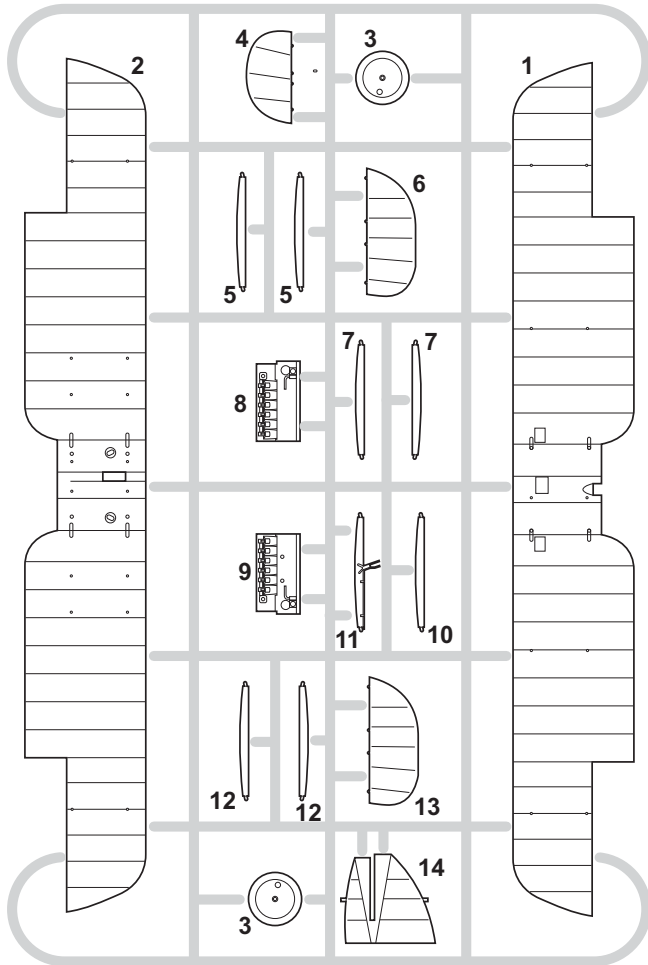
- GB** Carefully read instruction sheet before assembling. When you use glue or paint, do not use near open flame and use in well ventilated room. Keep out of reach of small children. Children must not be allowed to suck any part, or pull vinyl bag over the head.
- CZ** Před započatím stavby si pečlivě prostudujte stavební návod. Při používání barev a lepidel pracujte v dobře větrané místnosti. Lepidla ani barvy nepoužívejte v blízkosti otevřeného ohně. Model není určen malým dětem, mohlo by dojít k požití drobných částí.
- F** lire soigneusement la fiche d'instructions avant d'assembler. Ne pas utiliser de colle ou de peinture à proximité d'une flamme nue, et aérer la pièce de temps en temps. Garder hors de portée des enfants en bas âge. Ne pas laisser les enfants mettre en bouche ou sucer les pièces, ou passer un sachet vinyl sur la tête.
- D** Von dem Zusammensetzen die Bauanleitung gut durchlesen. Kleber und Farbe nicht nahe von offenem Feuer verwenden und das Fenster von Zeit zu Zeit Belüftung öffnen. Bausatz von kleinen Kindern fernhalten. Verhüten Sie, daß Kinder irgendwelche Bauteile in den Mund nehmen oder Plastiktüten über den Kopf ziehen.
- JP** 組み立てる前に必ず説明書をお読み下さい。接着剤や塗料をご使用の際は、窓を開けて十分な換気をおこない、火のそばでは使用しないで下さい。小さな子供の手の届かない所に必ず保管してください。部品や破片を噛んだり、なめたり、飲んだりすると大変危険です。又、部品を取り出した後のビニール袋は、小さな子供が頭から被ったりすると窒息する恐れがありますので、破り捨てて下さい。

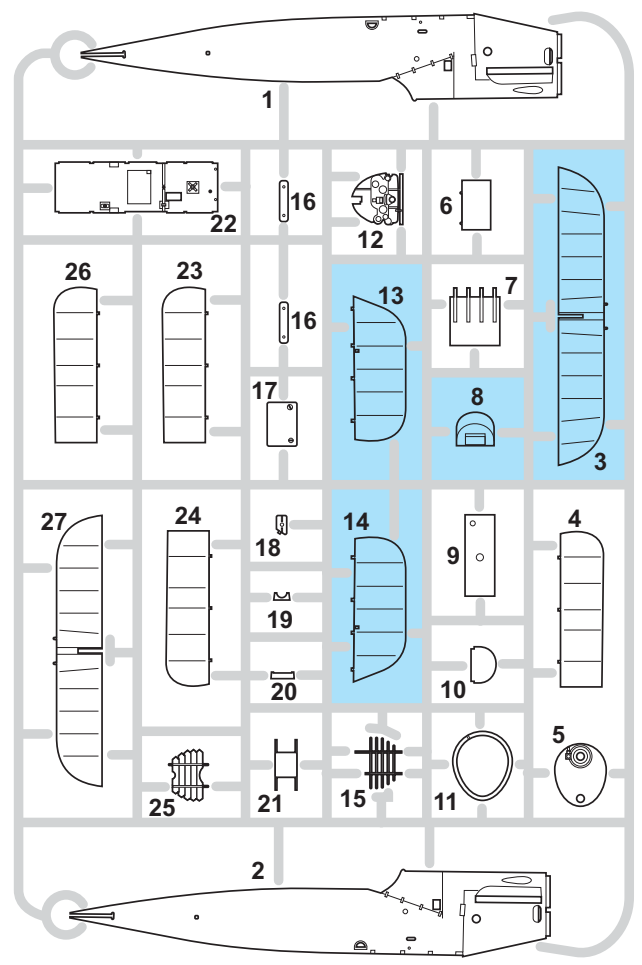
INSTRUKTION SIGNS * INSTR. SYMBOLY * INSTRUKTION SINNBILDEN * SYMBOLES * 記号の説明

- | | | | | | | |
|---|---|---|--|---|--|--|
| 
OPTIONAL
FACULTATIF
NACH BELIEBEN
VOLBA
選択する | 
BEND
PLIER SIL VOUS PLAIT
BITTE BIEGEN
OHNOUT
折る | 
OPEN HOLE
FAIRE UN TROU
OFFNEN
VYVRTAT OTVOR
穴を開ける | 
SYMETRICAL ASSEMBLY
MONTAGE SYMÉTRIQUE
SYMMETRISCHE AUFBAU
SYMETRICKÁ MONTÁŽ
左右均等に組み立てる | 
NOTCH
L INCISION
DER EINSCHNITT
ZÁŘEZ
切る | 
REMOVE
RETIRER
ENTFERNEN
ODŘÍZNOUT
移す | 
APPLY EXPRESS MASK
AND PAINT BEFORE
GLUING
POUŽIT EXPRESS MASK
NABARVIT PŘED SLEPENÍM |
|---|---|---|--|---|--|--|

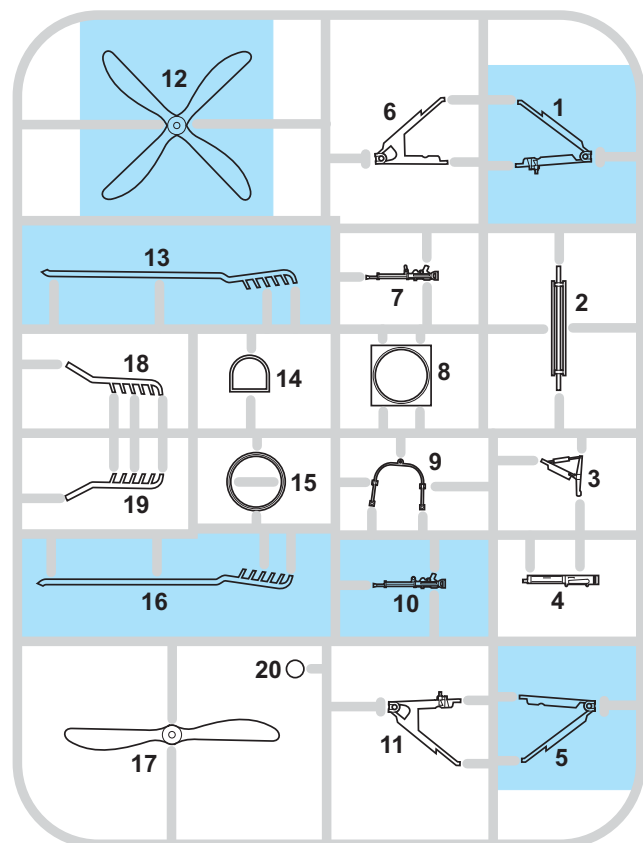
PLASTIC PARTS

<A>

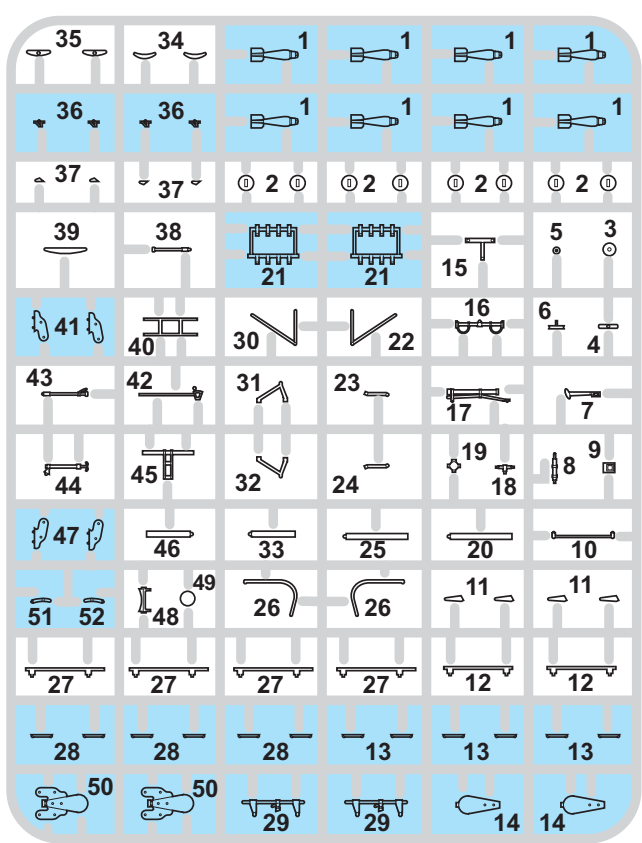




<C>

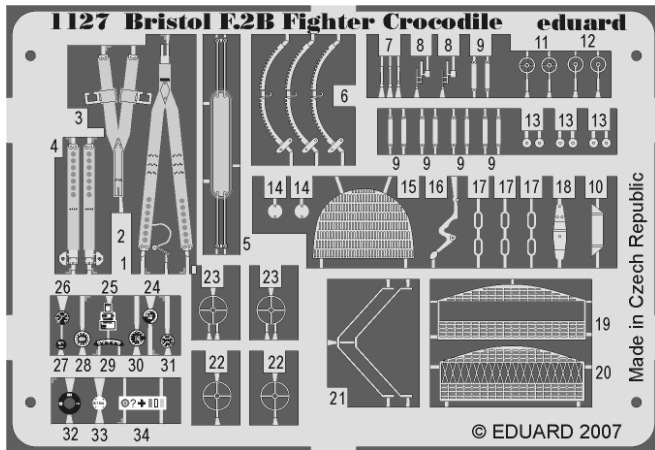


<D>

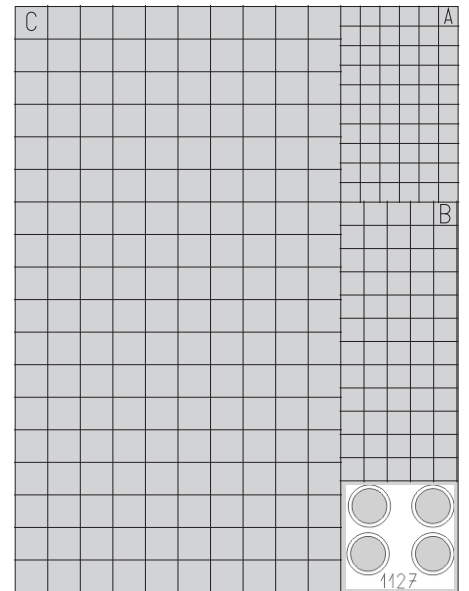
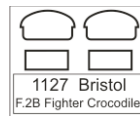


PE - PHOTO ETCHED DETAIL PARTS

eduard MASK



FILM



COLOURS



BARVY



FARBEN



PEINTURE

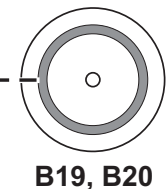
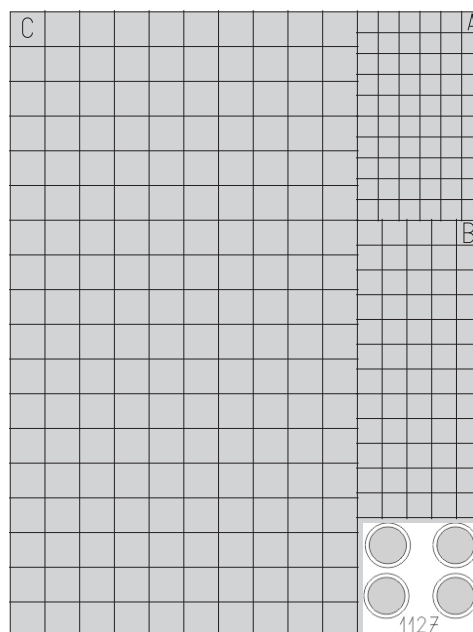


色

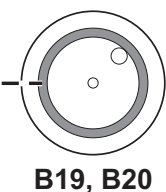
GUNZE		APPROXIMATE COLOR MATCH				
AQUEOUS	Mr.COLOR		TAMIYA	HUMBROL	REVELL	TESTORS
H 2	2	BLACK / SCHWARZ / NOIR / ČERNÁ	X 1	21	7	1747
H 3	3	RED / ROT / ROUGE / ČERVENÁ	X 7	19	31	1590
H 6	6	GREEN / GRÜN / VERT / ZELENÁ	X 26	3	62	1524
H 11	62	WHITE / WEIß / BLANC / BÍLÁ	XF 2	34	5	1768
H 37	43	WOOD BROWN / HOLZ / BOIS / DŘEVO	XF 55	110	381	1735
H 47	41	RED BROWN / ROT BRAUN / BRUN- ROUGE / ČERVENOHNĚDÁ	XF 64	160	383	
H 53	13	GRAY / GRAU / GRIS / ŠEDÁ	XF 53	128	71	1721
H 66	19	SANDY BROWN / SAND GELB / SABLE / PÍSKOVĚ HNĚDÁ		62	85	1736
H 85	45	SAIL COLOUR / SEGEL FARBE / CHÈNE SATINÉ / PLÁTNO		71	314	
H 309	309	GREEN / GRÜN / VERT / ZELENÁ	FS234079	XF 61	116	
H 313	313	YELLOW / GELB / JAUNE / ŽLUTÁ	FS33531	XF 57	121	
H 338	338	LIGHT GRAY / HELLGRAU / GRIS CLAIR / SVĚTLE ŠEDÁ	FS36495		147	
H 344		RUST / ROST / ROUILLE / REZ	XF 52	113		
Mr.METAL COLOR						
MC213		STEEL / STAHL / ACIER / OCEL	XF 16	56 + 53	91	1780
MC214		DARK IRON / DUNKEL EISEN / KOV. ČERNÁ	X 10	53		1795
MC218		ALUMINIUM / ALUMINIUM / ALUMINIUM / HLINÍK	XF 56	56	99	1781
MC219		BRASS / MESSING / CIUVRE JAUNE / MOSAZ	XF 6	54	92	1182

eduard MASK

1127

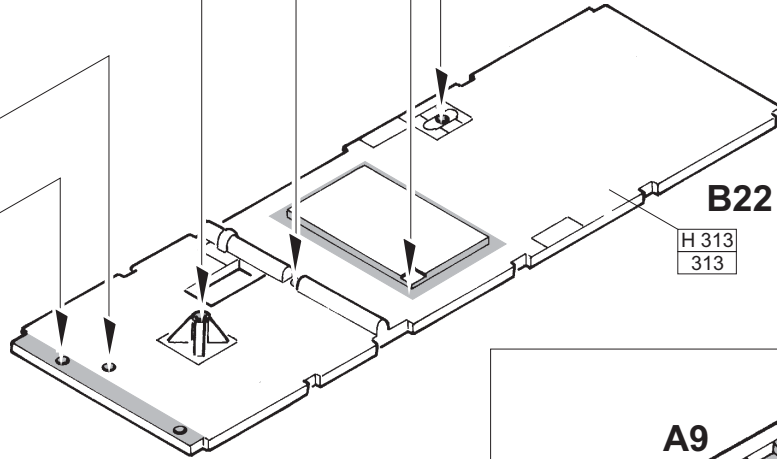
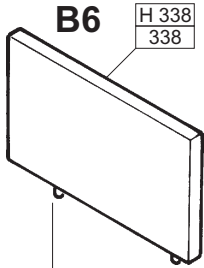
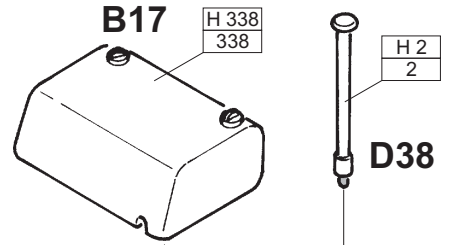
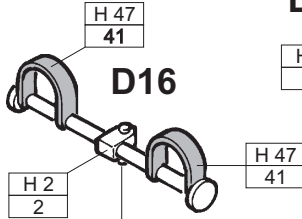
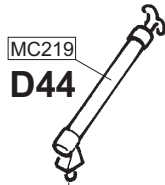
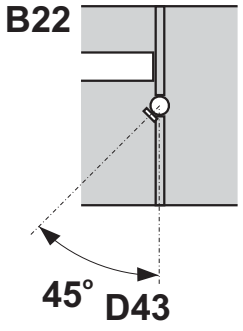


B19, B20

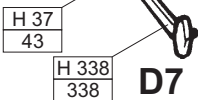
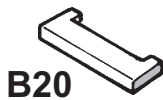
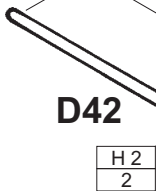
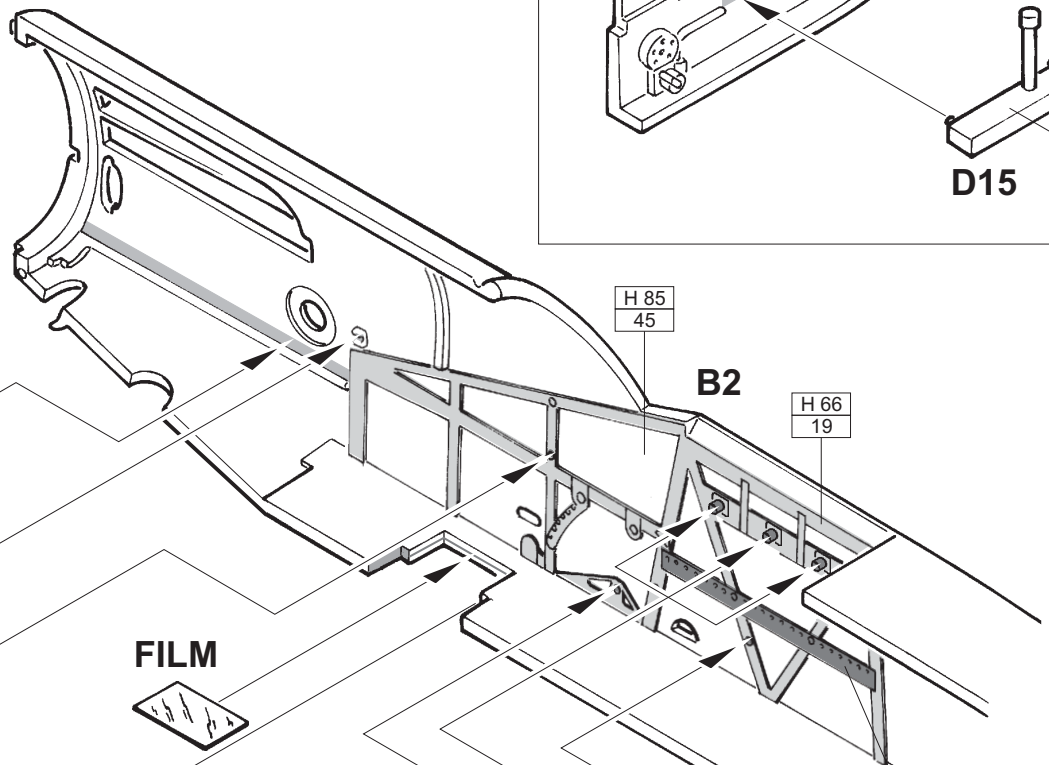
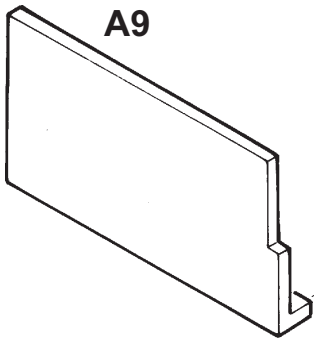
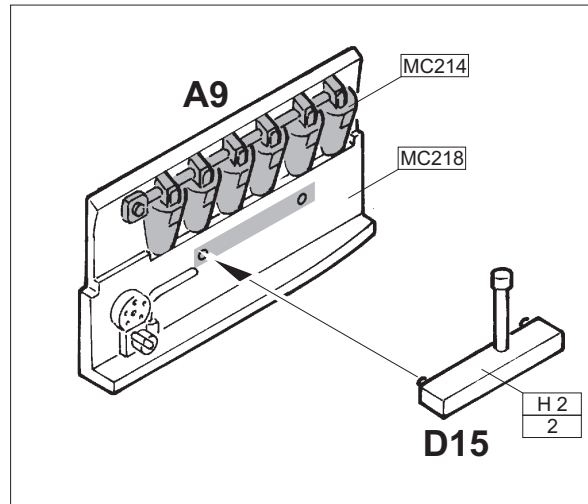
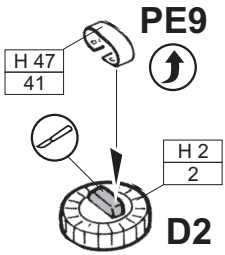


B19, B20

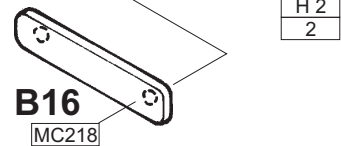
1

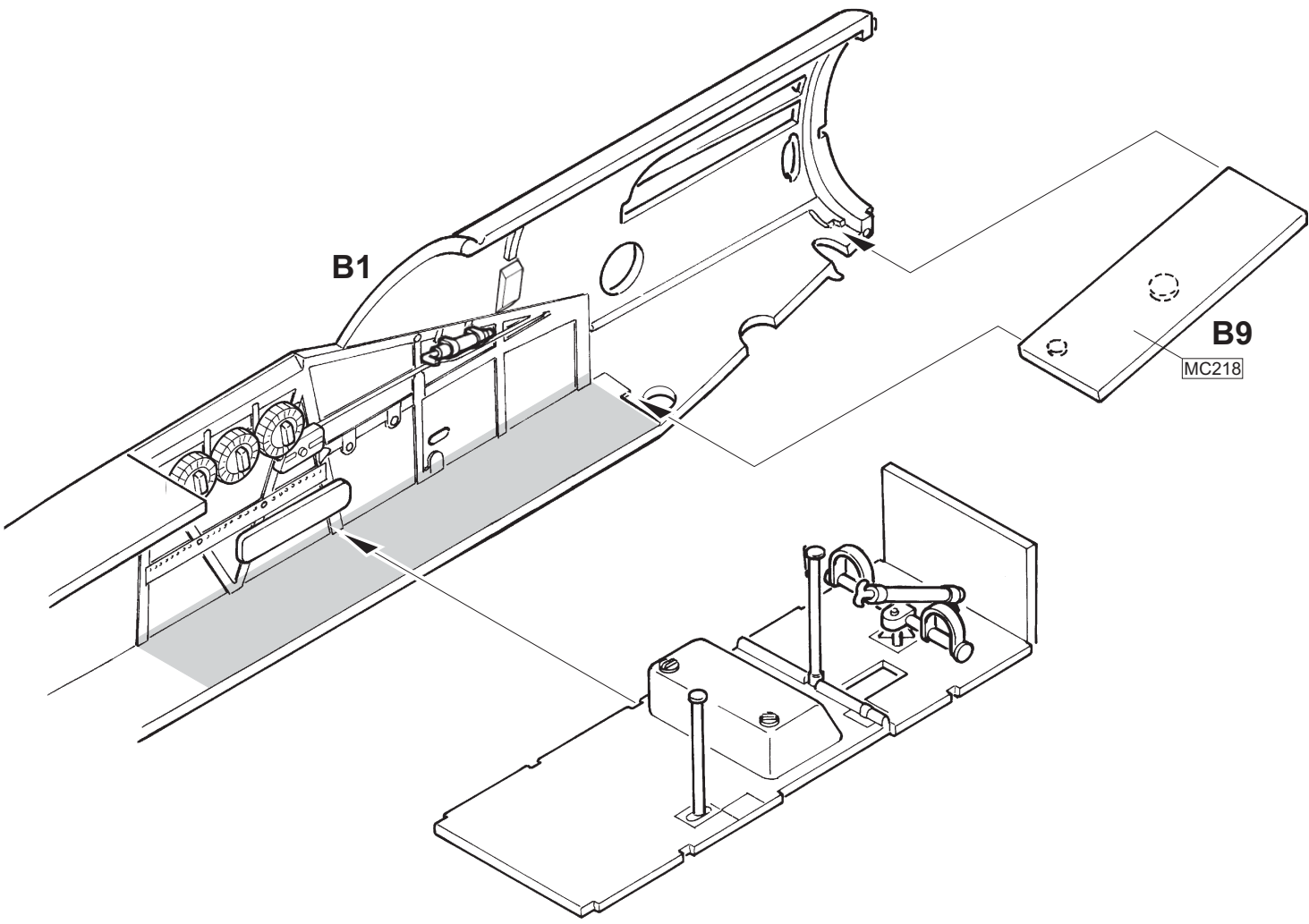
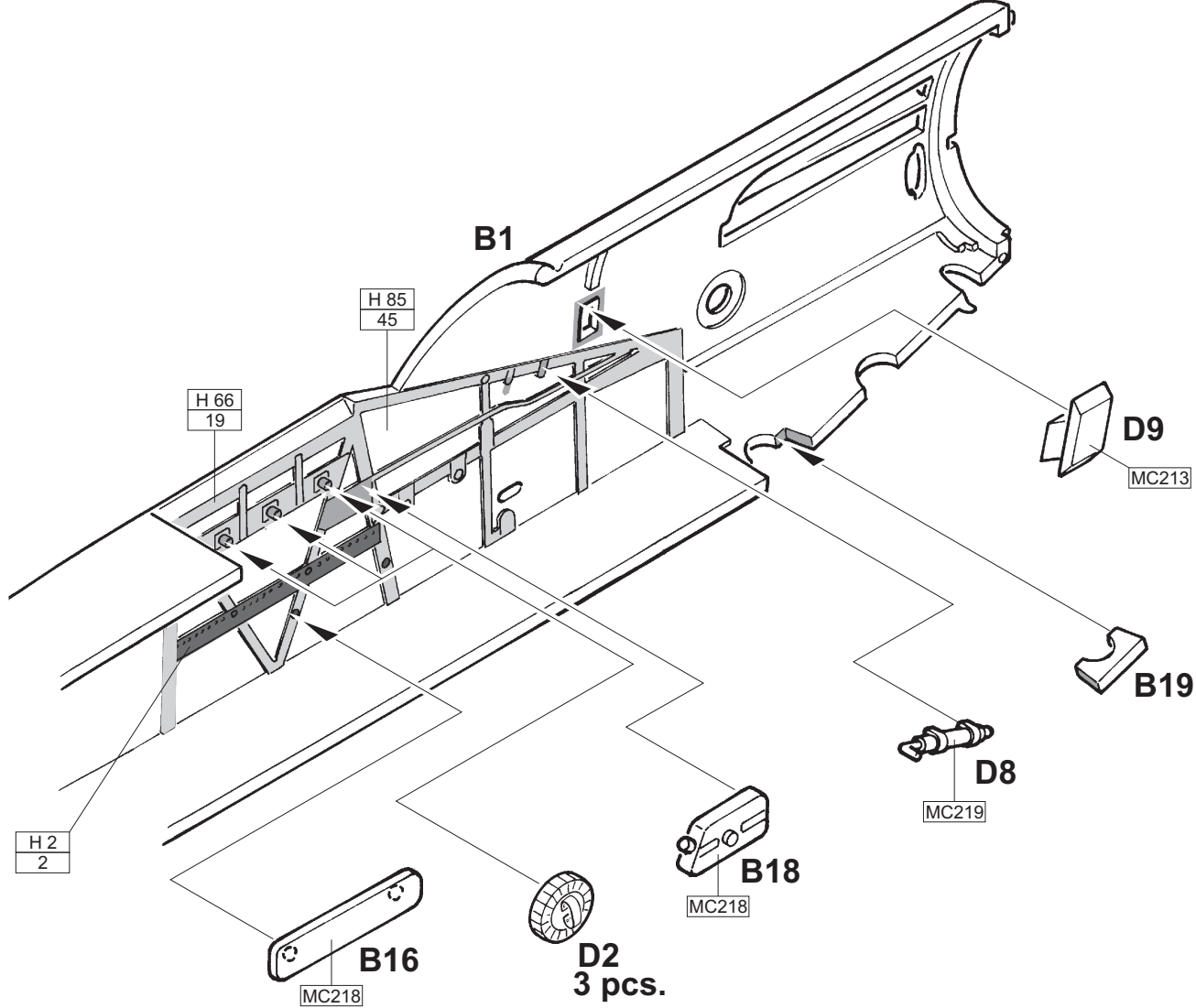


8 pcs.



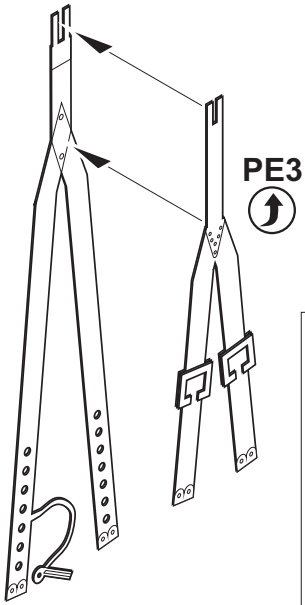
D2 3 pcs.



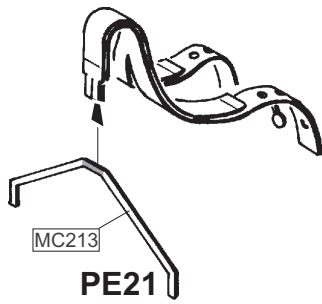


3

PE1

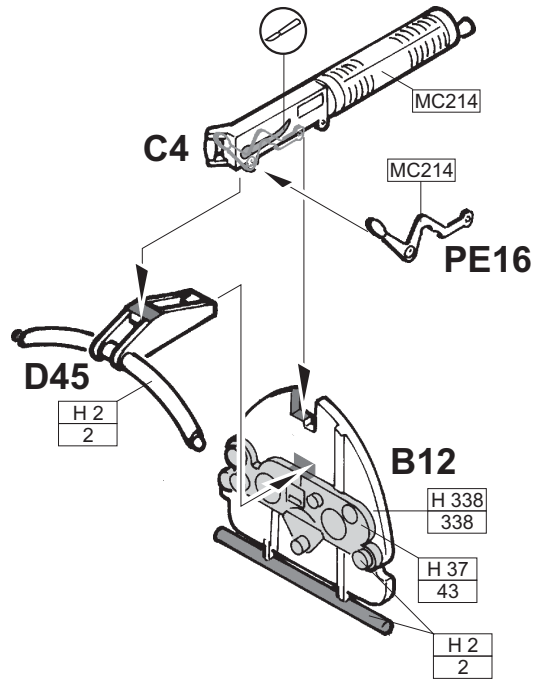
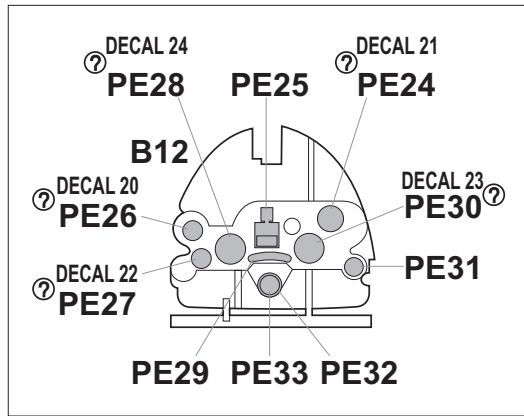


PE3
↑



MC213

PE21



C4

MC214

MC214

PE16

D45

H 2
2

B12

H 338
338

H 37
43

H 2
2

H 66
19

H 66
19

H 66
19

C14

PE19
↑

PE15

PE20
↑

?

B10

H 47
41

H 2
2

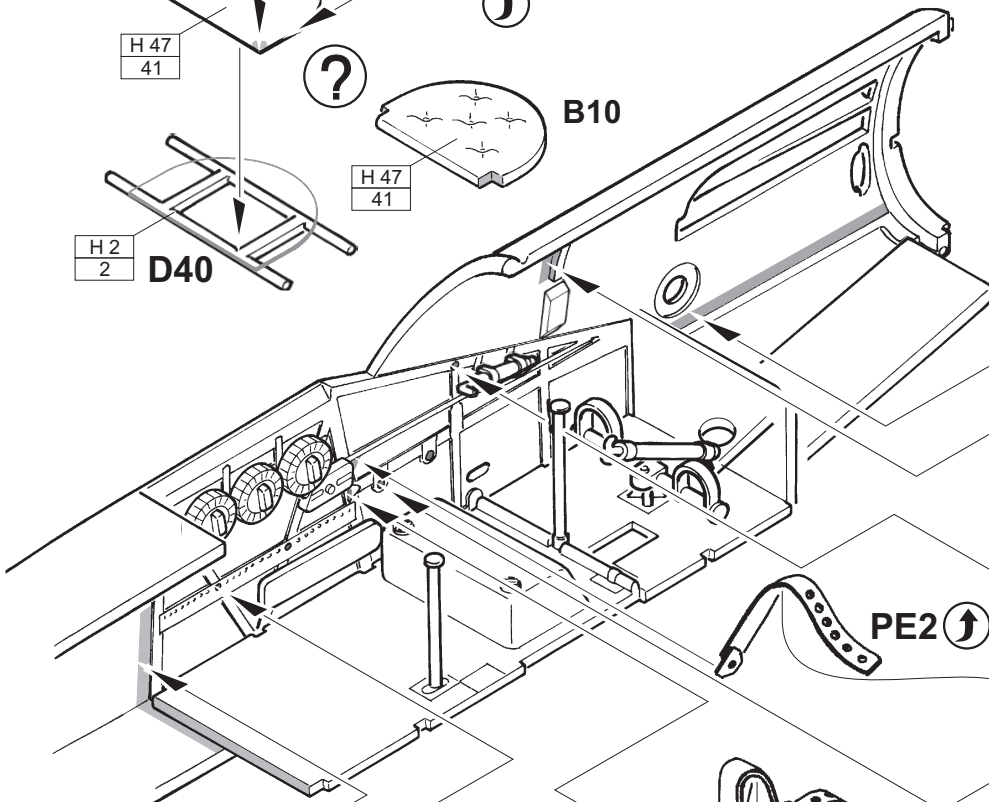
D40

MC214

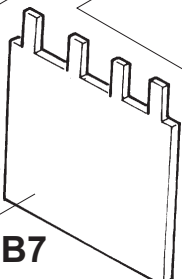
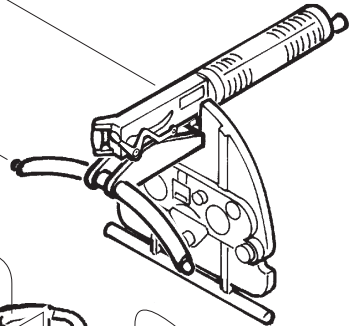
MC218

A8

A8

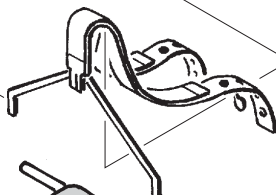


PE2
↑



H 85
45

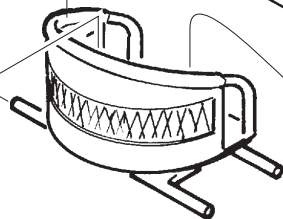
B7



H 2
2

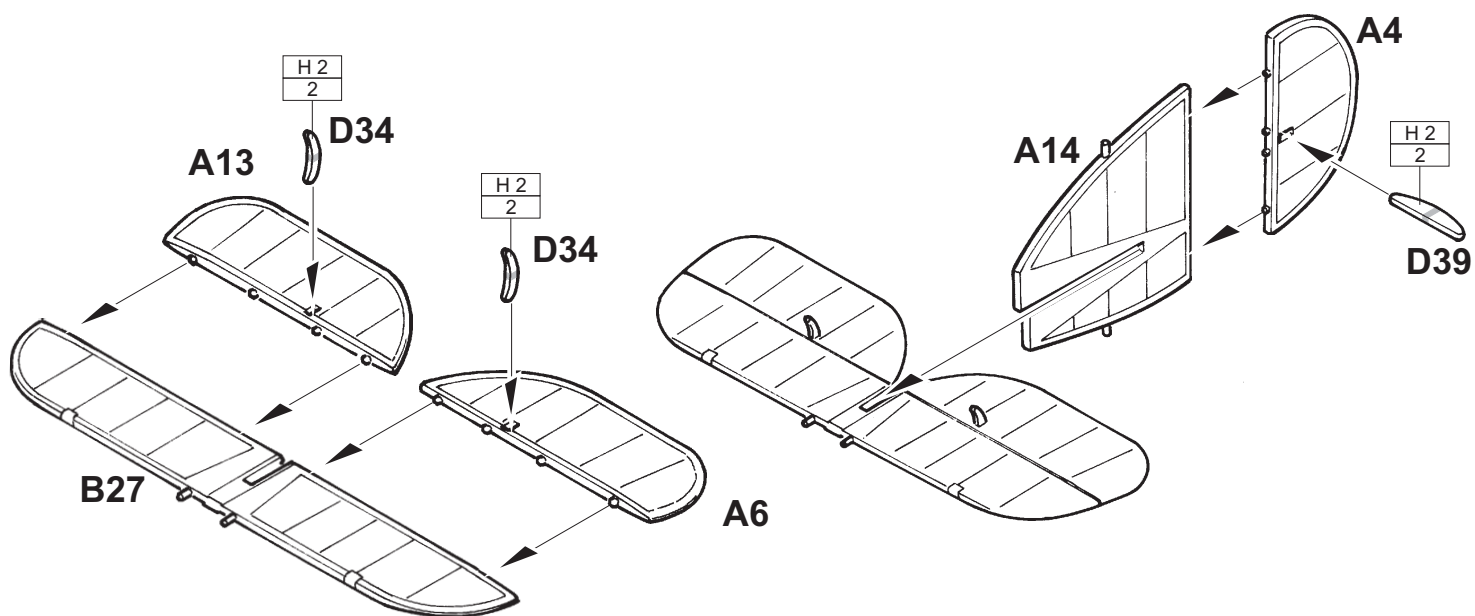
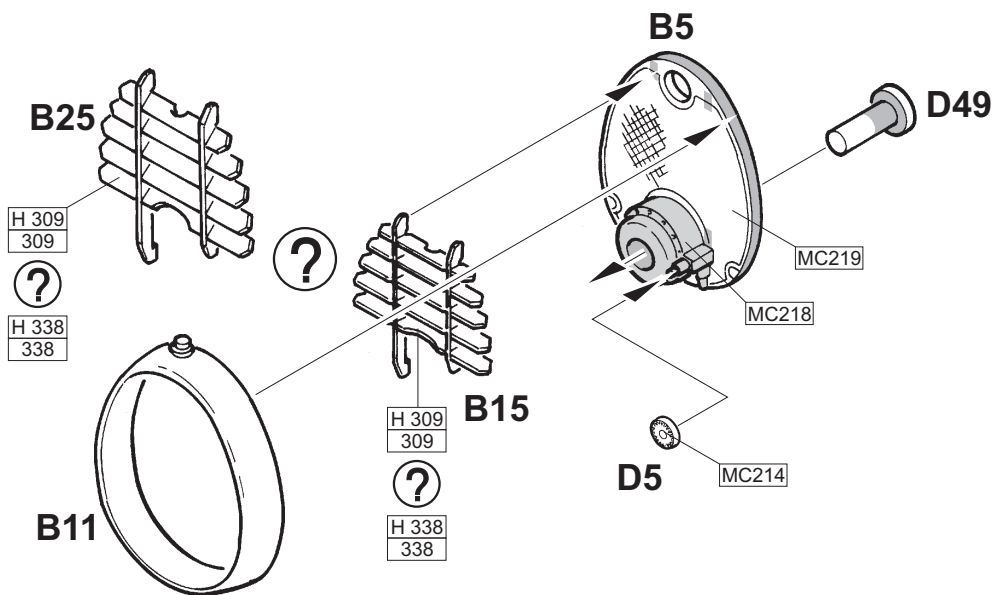
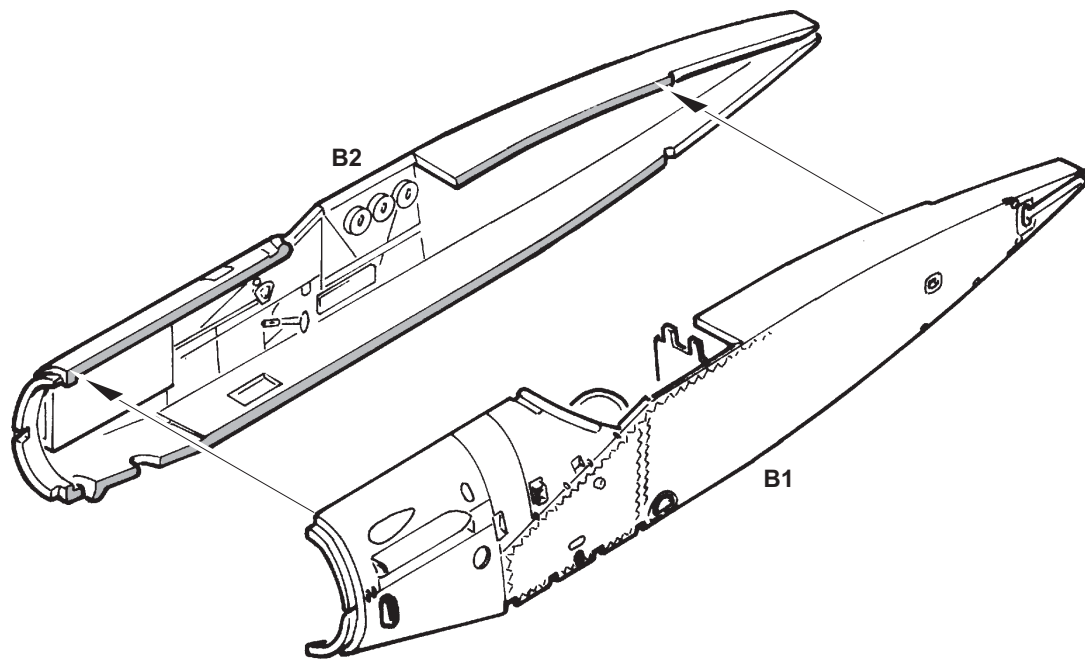
B21

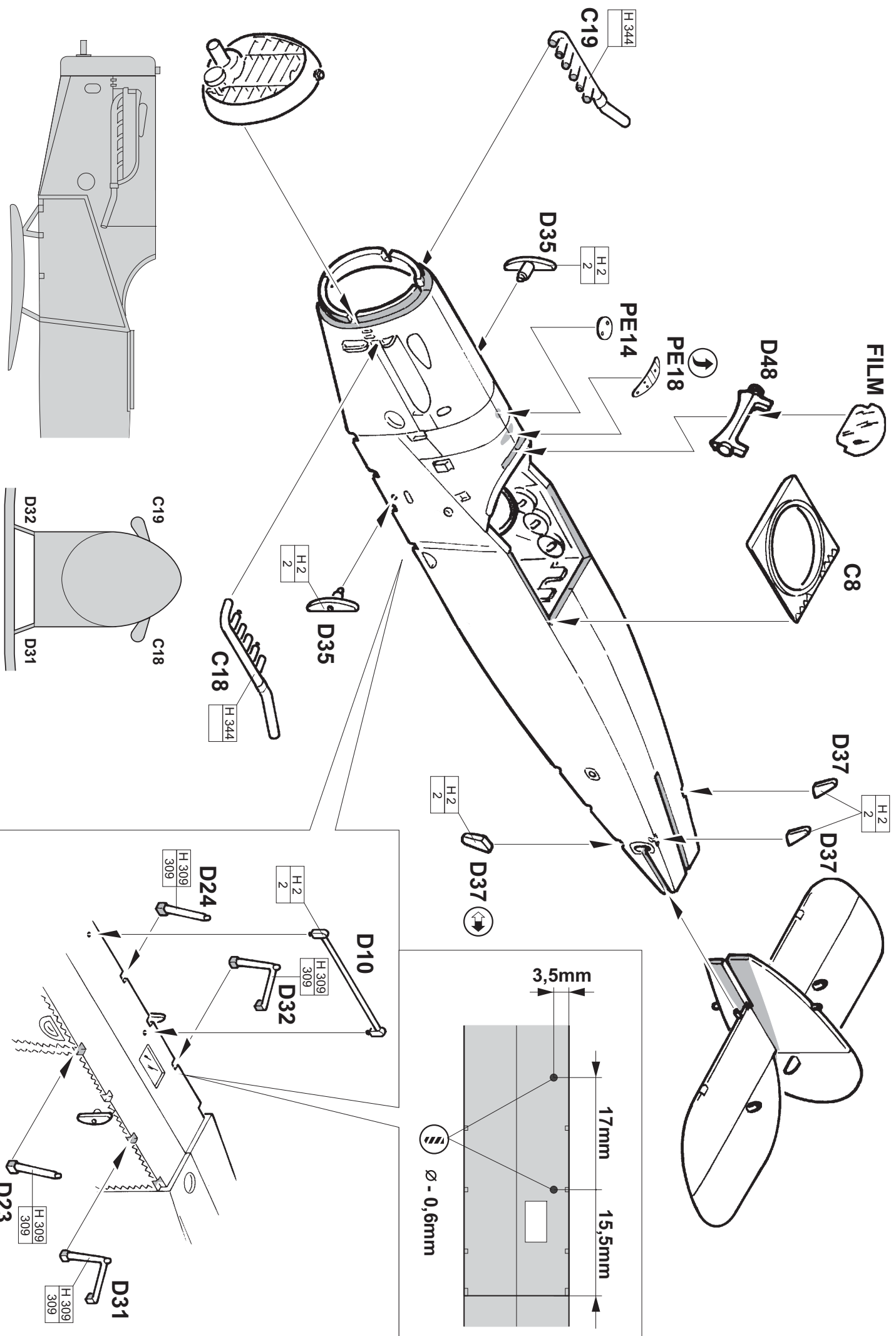
H 47
41

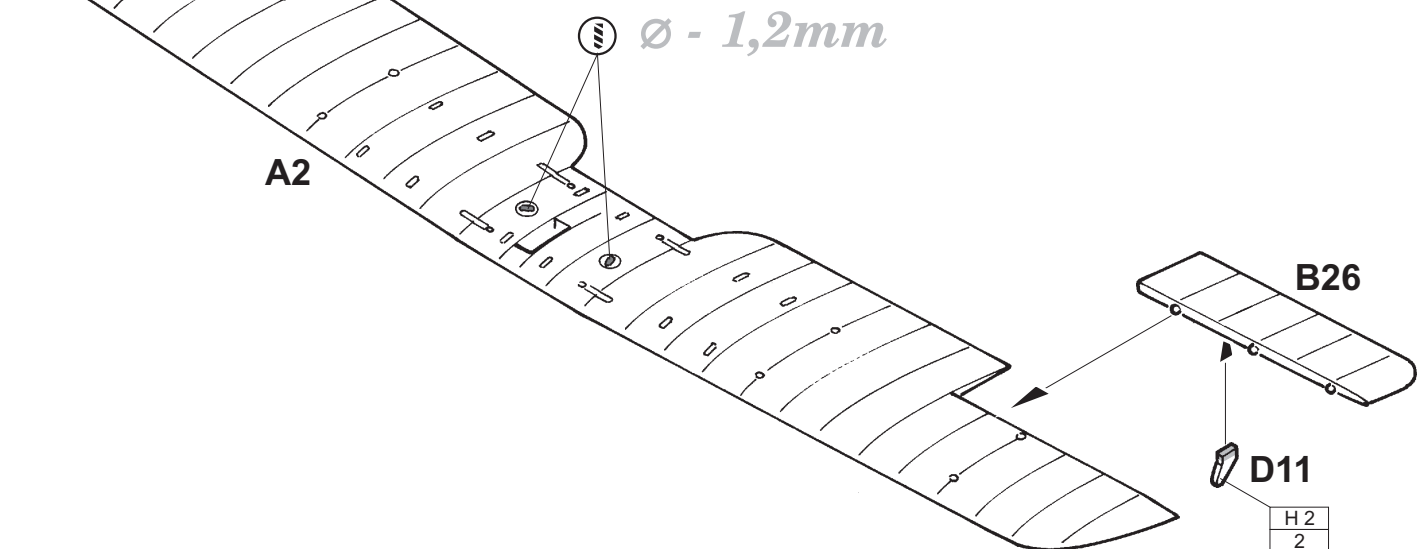
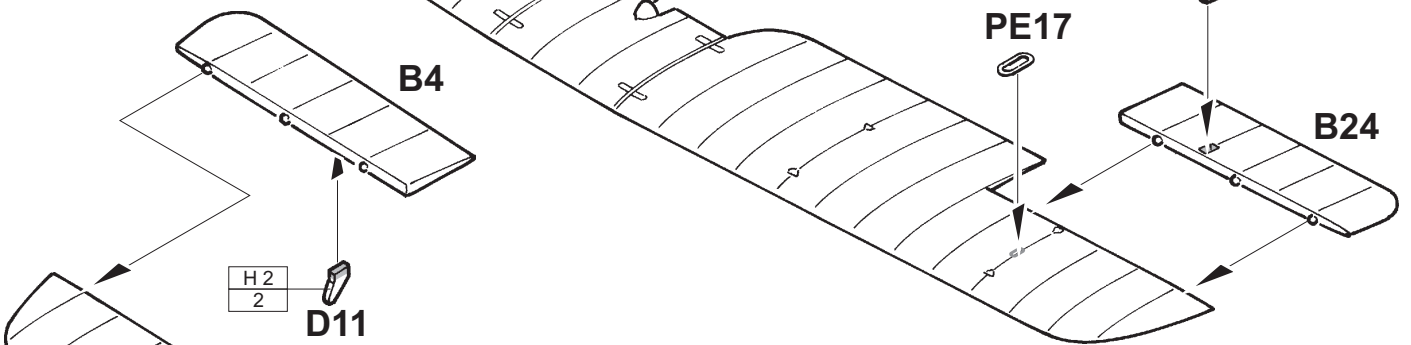
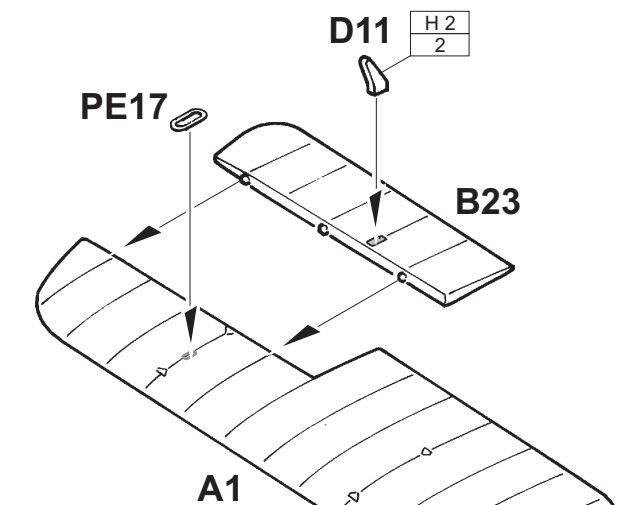
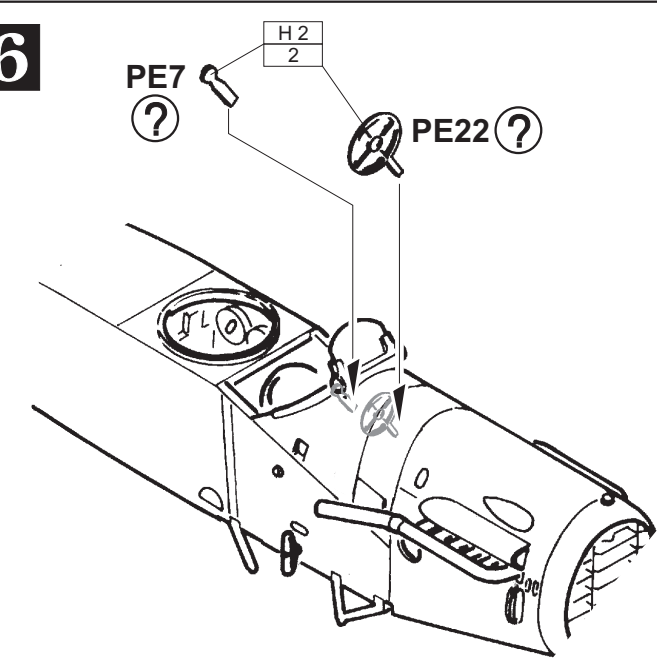
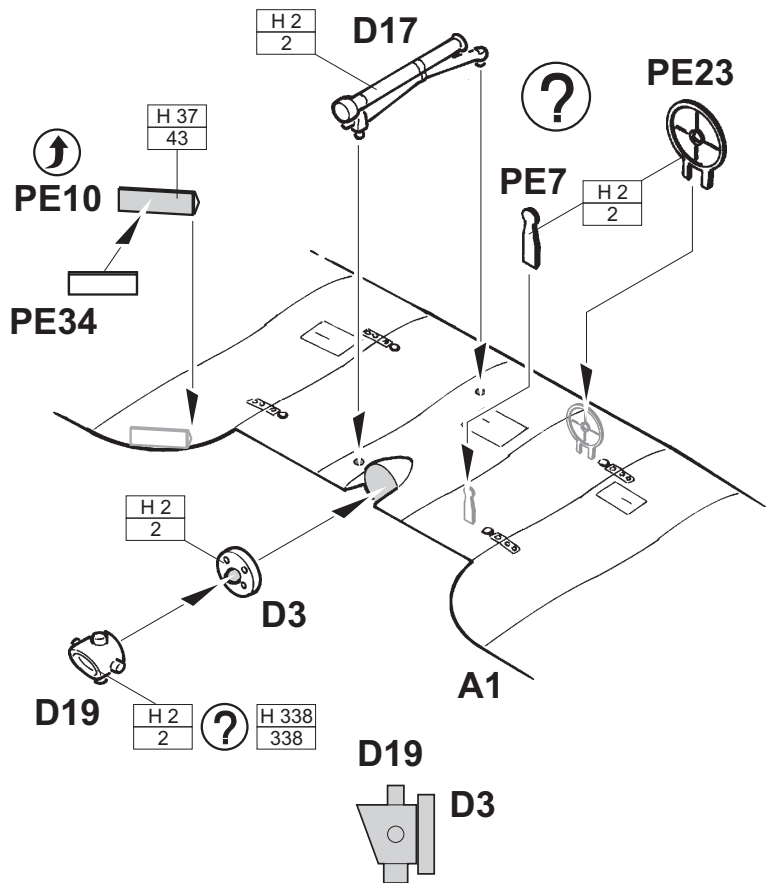


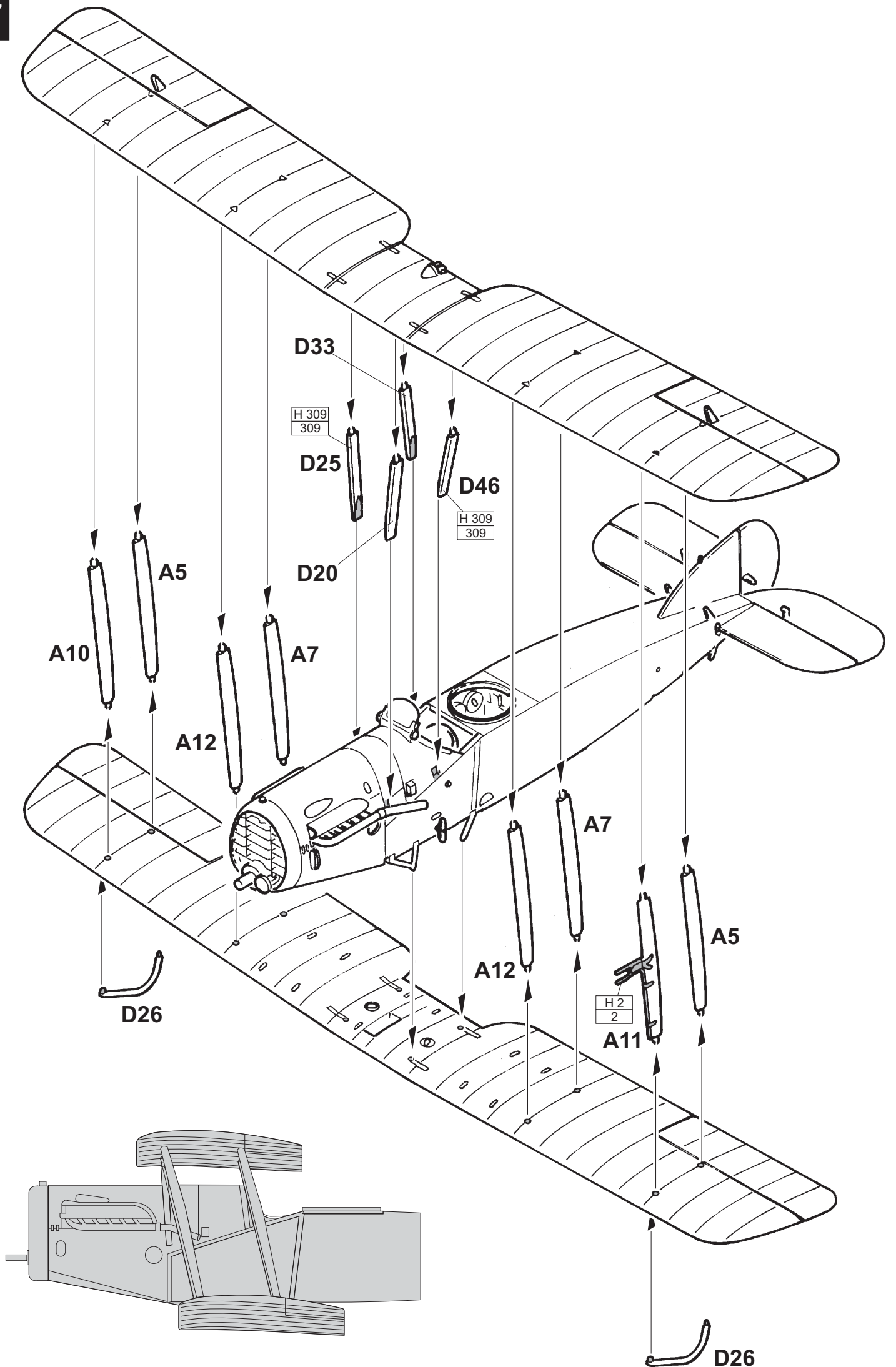
PE4
↑

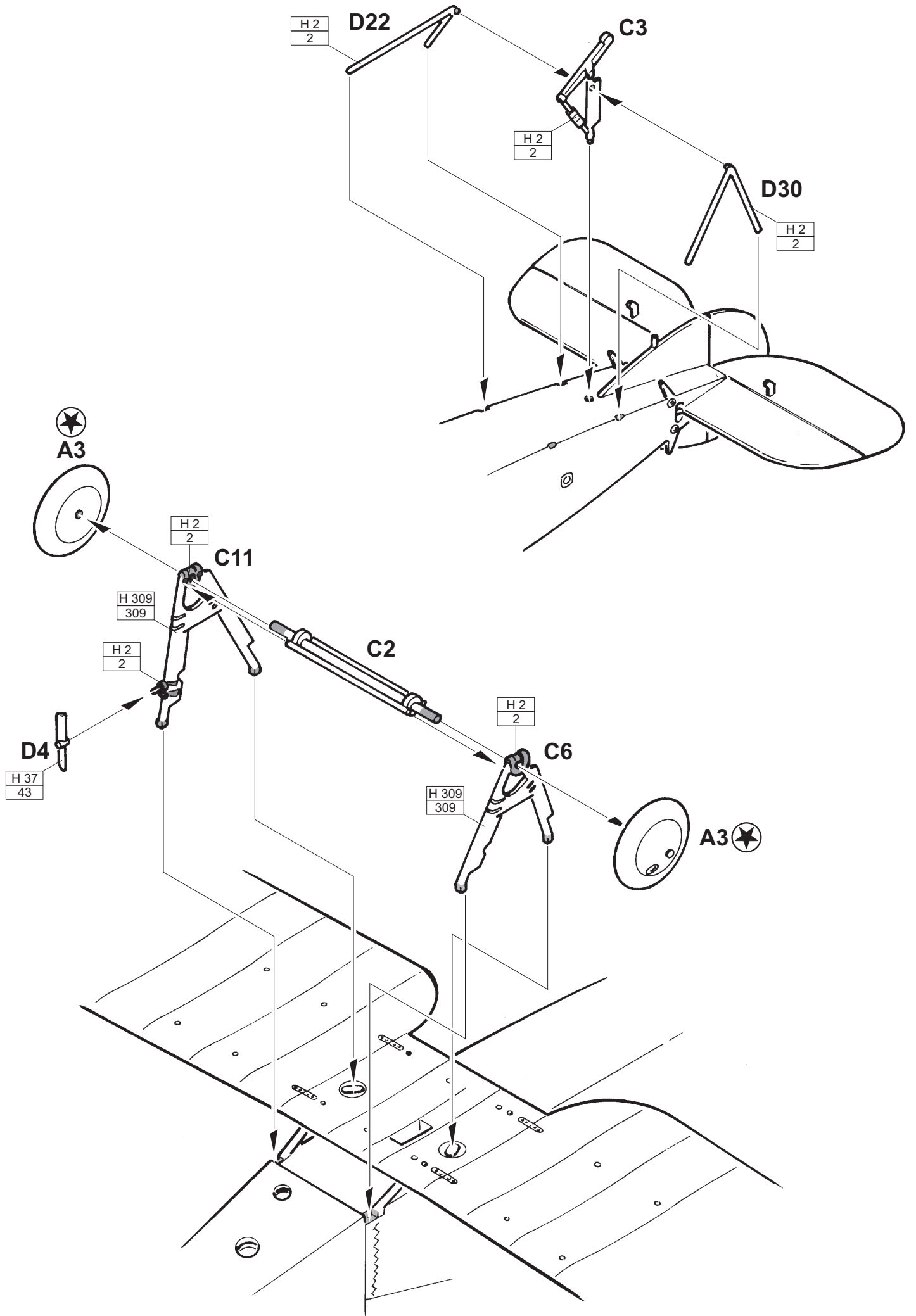
↑

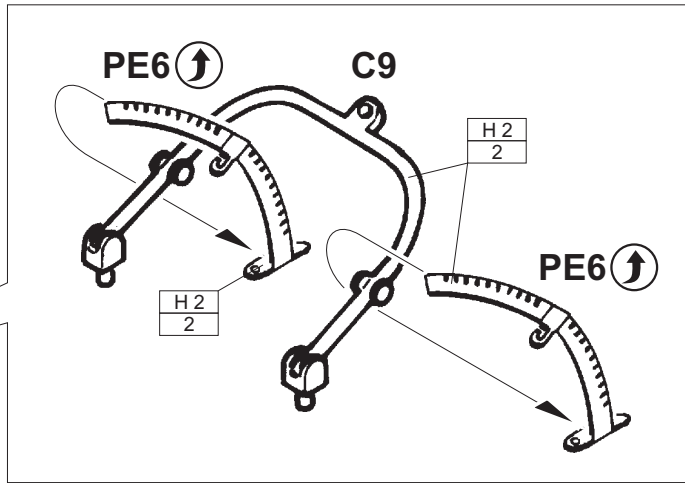
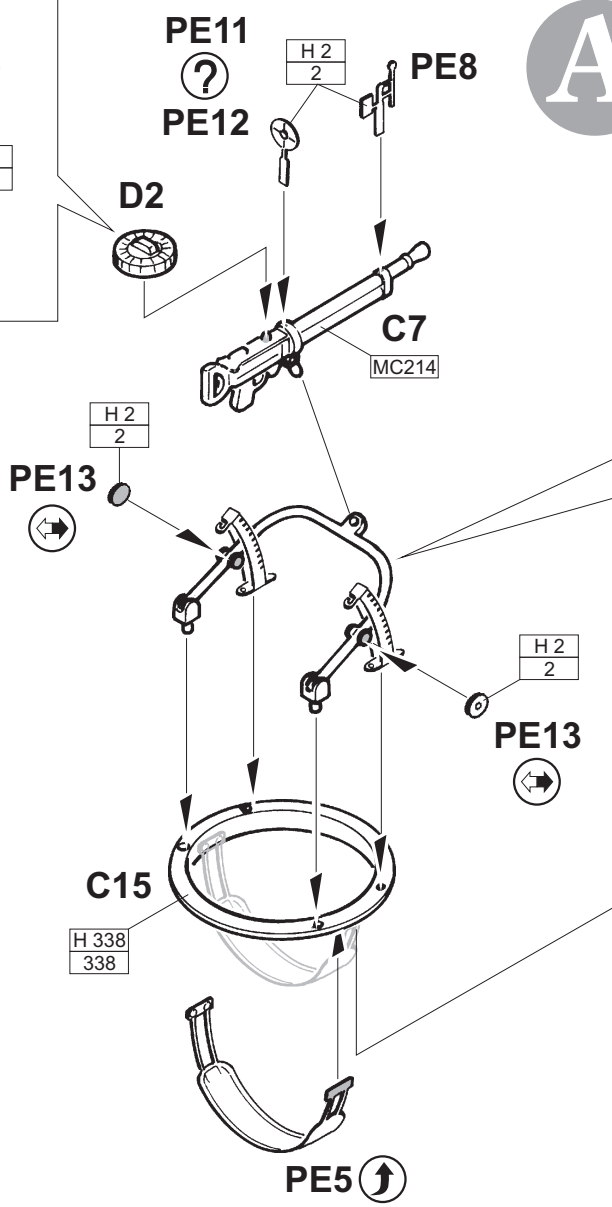
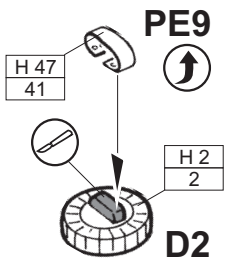
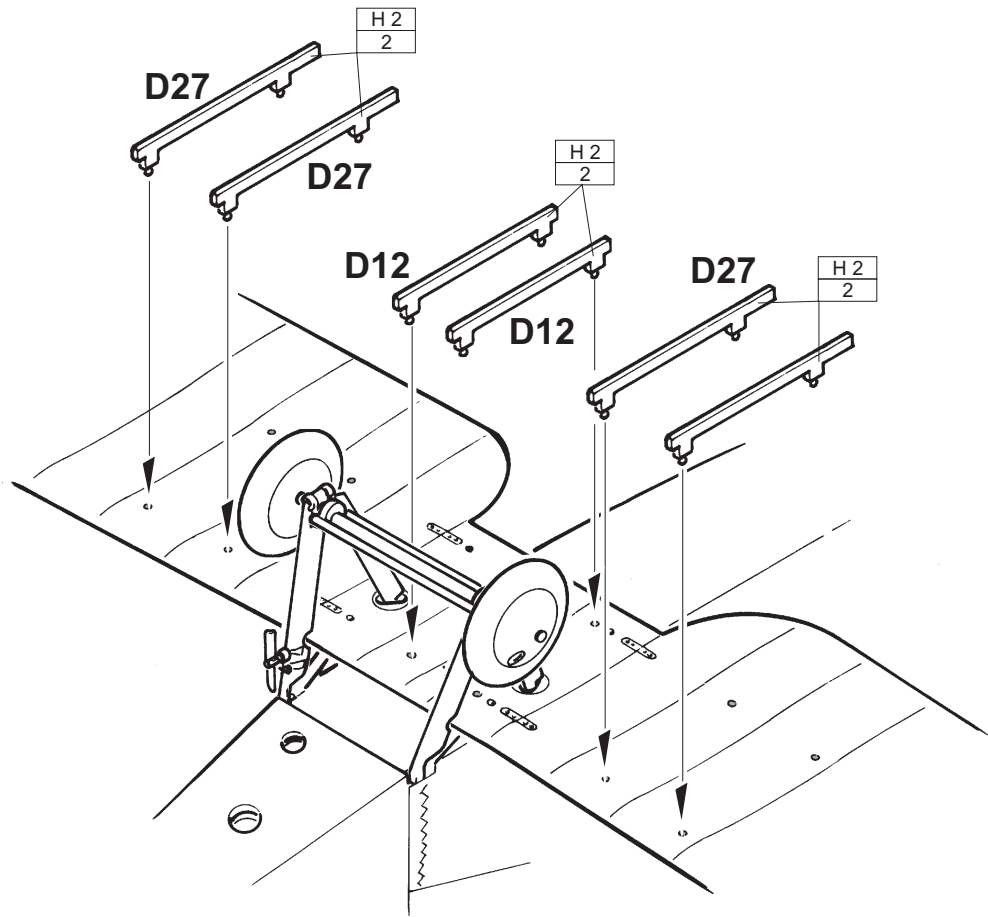




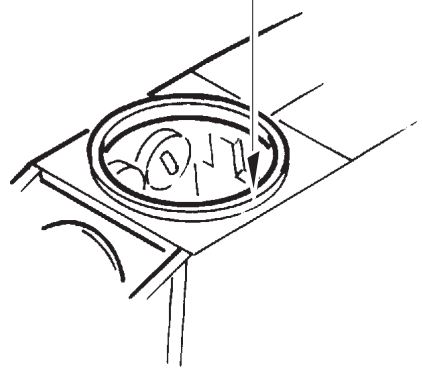
6**BOTTOM**

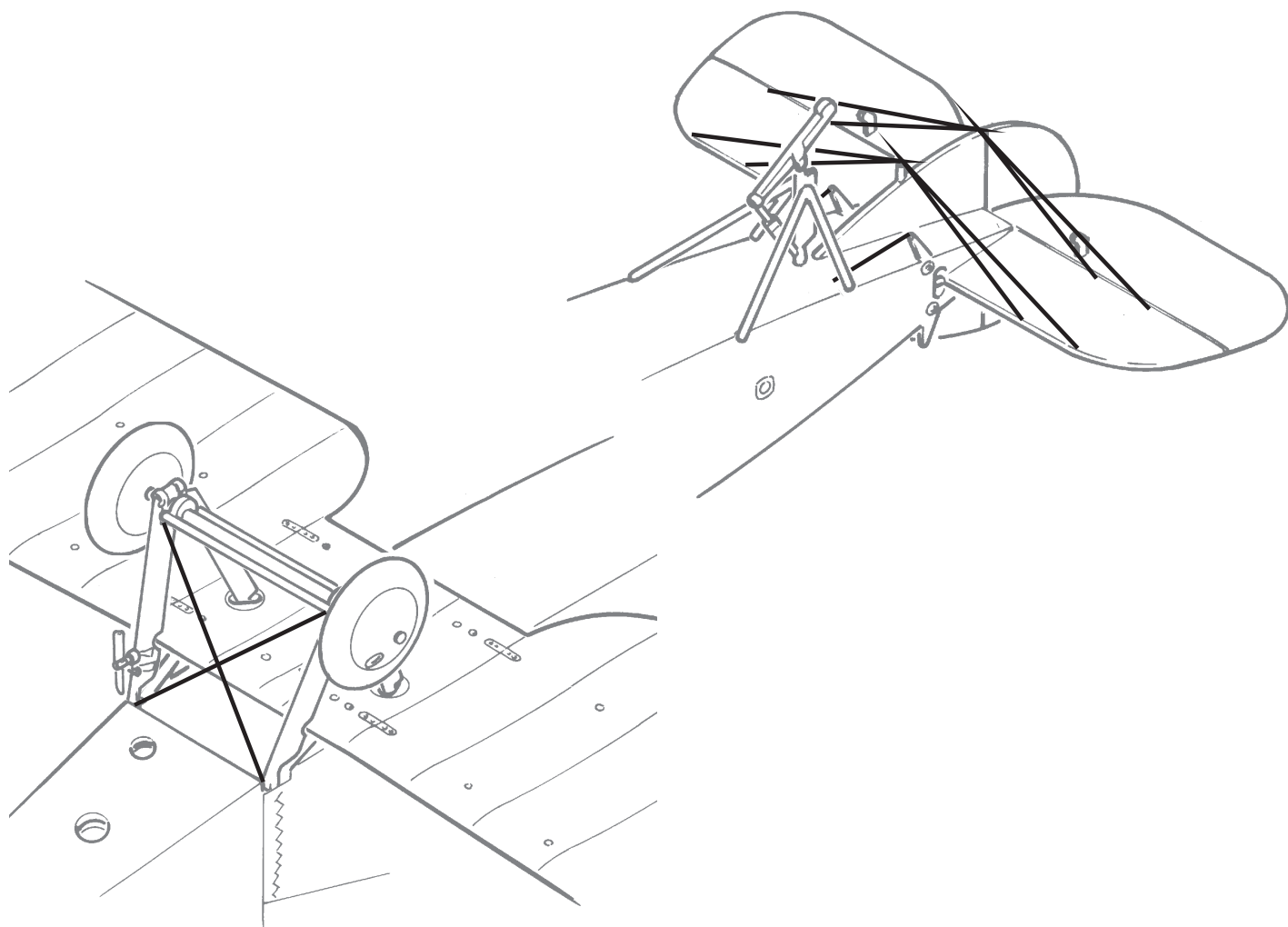
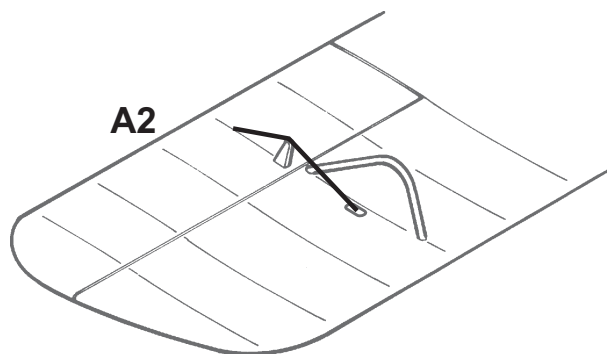
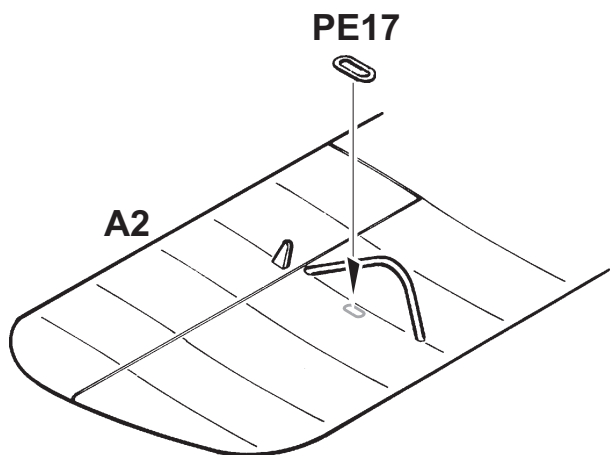
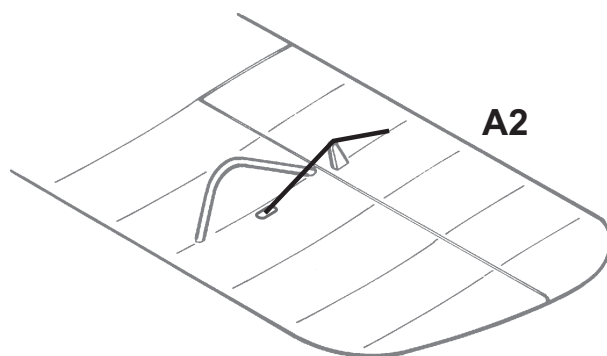
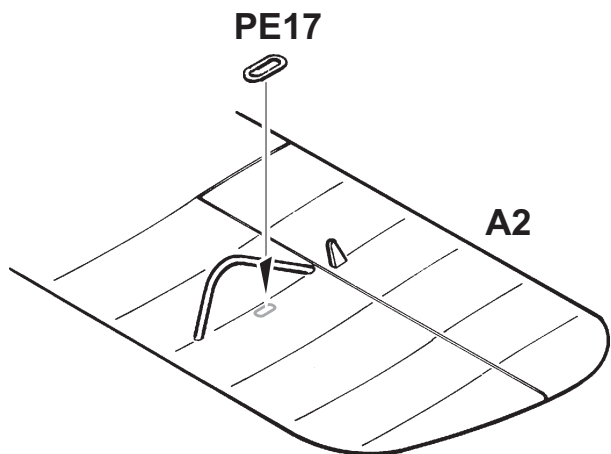


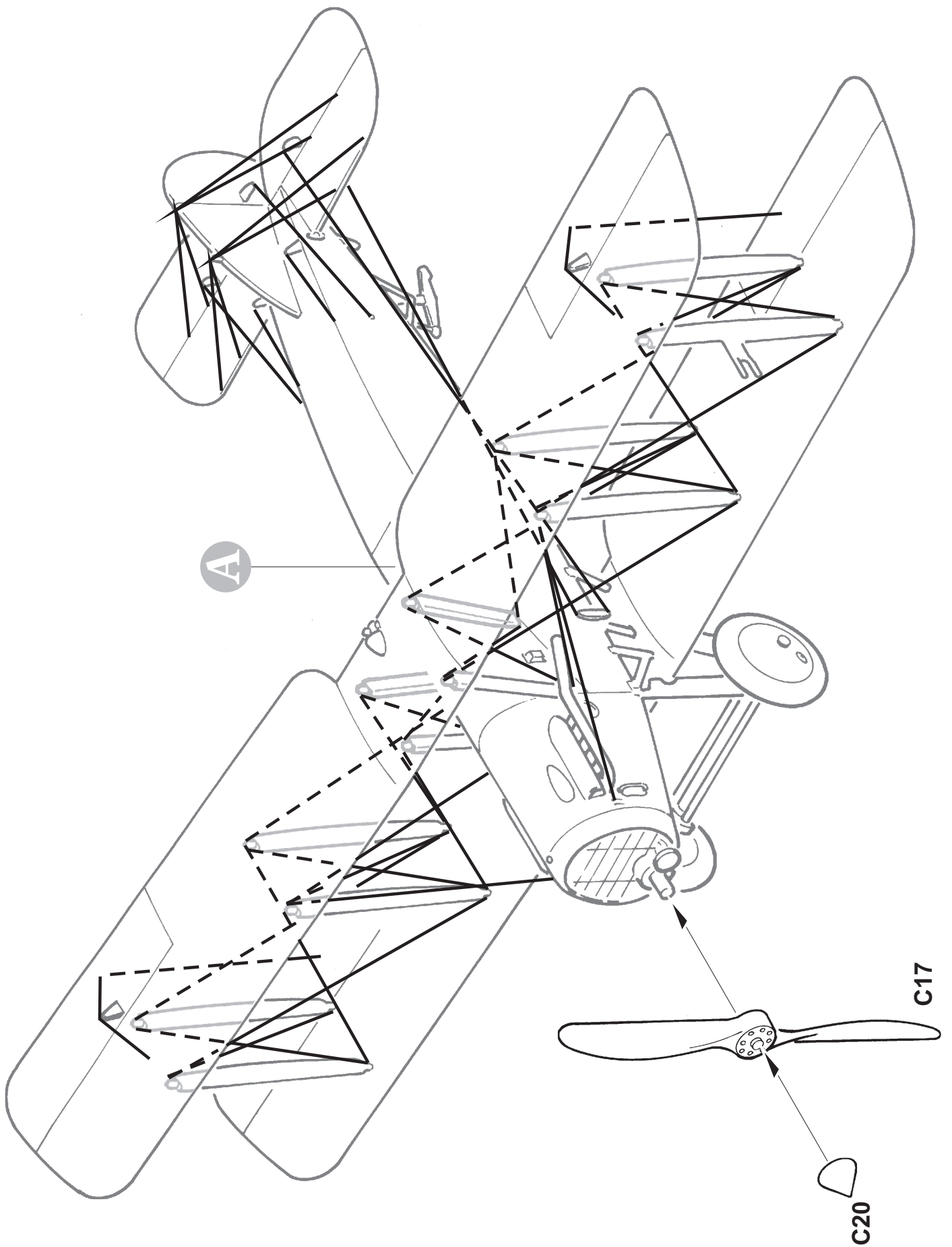




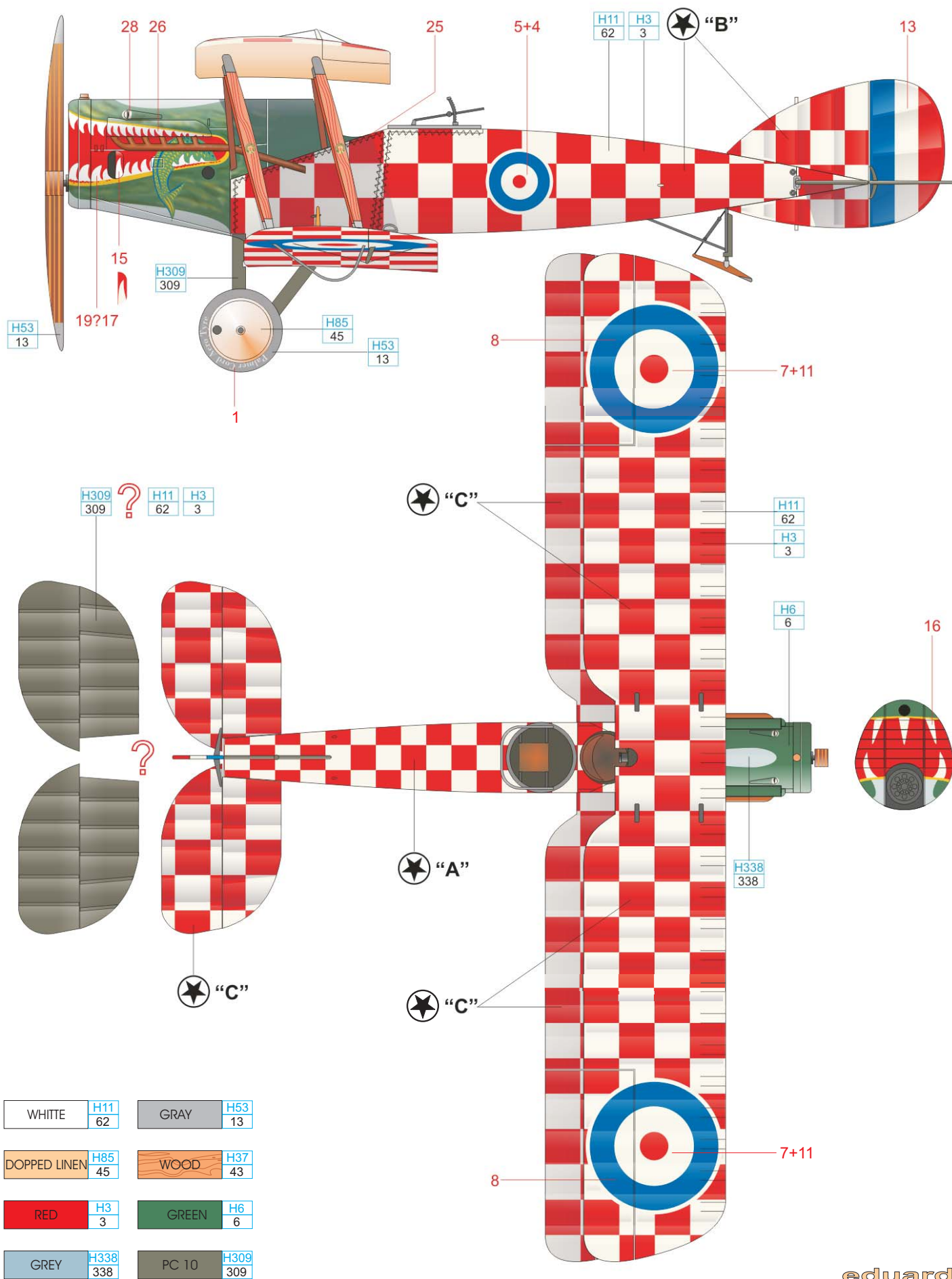
**DO NOT GLUE!!!
NELEPIT!!!**





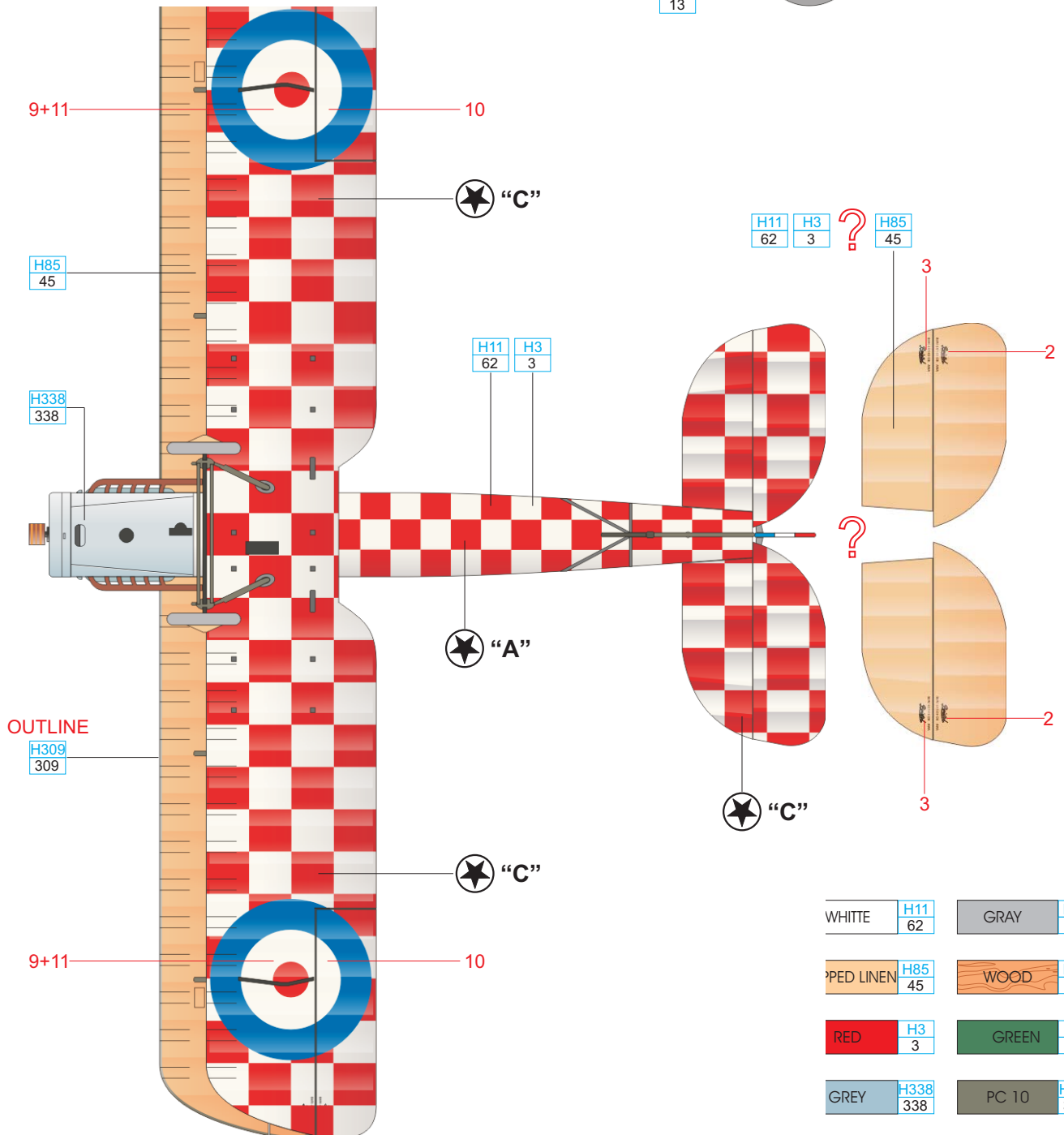
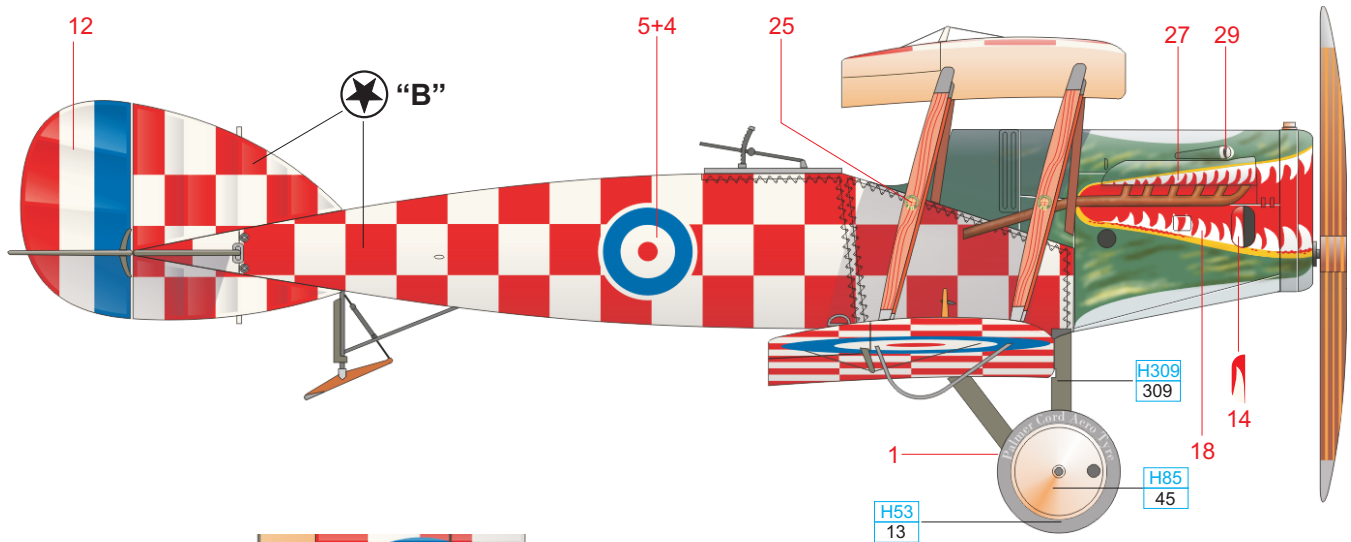


BRISTOL F.2B FIGHTER, C4879, known as "The Crocodile", was photographed at Witney, supposedly after the armistice. It is suspected that it was the personal aircraft of the Wing Examining Officer of No.33 TDS. It is not known if the horizontal tail was also checkered, or if it remained in PC 10. The bottom surface of the upper wing was later also painted in the checkerboard fashion, and the serial number was added to the vertical tail. To paint the checkerboard pattern, paint the white first, then apply the Eduard mask to mask the white surfaces, apply the red color, and finally remove the mask.



WHITE	H11 62	GRAY	H53 13
DOPPED LINEN	H85 45	WOOD	H37 43
RED	H3 3	GREEN	H6 6
GREY	H338 338	PC 10	H309 309

BRISTOL F.2B FIGHTER, C4879, byl známý jako "Krokodýl". Stroj byl vyfotografován ve Witney, pravděpodobně krátce po skončení 1.světové války. Předpokládá se, že šlo o osobní stroj některého z vyšších důstojníků, možná zkušební komisaře wingu. Není jisté, zda VOP byla také kostičkováná, nebo zda zůstala v původních barvách. Kostičkovaný nátěr byl později doplněn i na spodní plochu horního křídla, stejně jako sériové číslo stroje na SOP. Při barvení kostičkovaných partií křidel a trupu nejprve nastříkejte bílou, potom zakryjte bílé kostičky maskou a nastříkejte červenou. Poté odstraňte masku.



WHITE	H11 62	GRAY	H53 13
SPED LINEN	H85 45	WOOD	H37 43
RED	H3 3	GREEN	H6 6
GREY	H338 338	PC 10	H309 309