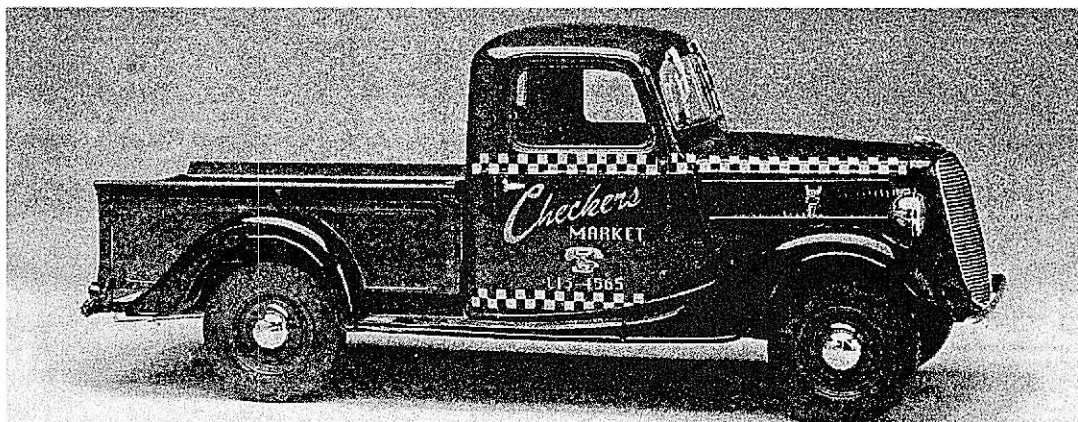


'37 FORD PICK UP



"Number One for 1937!" And after twenty years of truck production, it was a claim Ford Motor Company could be proud of, with sales of the new Ford Trucks beating out the competition hands down. The post-depression public obviously loved the '37 Ford Trucks and it's easy to see why, considering the multitude of improvements inside and out.

In the styling department, a new full-height radiator grille and shell; revised hood, louvers and ornamentation; a vee-type two-piece windshield and compatible cowl and a newly designed tailgate with the words "Ford V-8" embossed in its center. Even the cargo bed was revamped....an extra four inches added to its length and a new steel floor panel with a wood sub-floor.

And on the inside, the world renowned Ford V-8 engine was more extensively redesigned than ever before. Improvements included a reworked cylinder block casting with integrated, self-lubricating water pumps; revised valve guides; altered front mountings; and an upgraded ignition system. Aluminum was no longer employed for either the pistons or the standard cylinder heads, being replaced respectively by cast steel and cast iron.

Your Revell-Monogram 1937 Ford Pickup Kit reflects all the exciting features of the real truck in miniature form and can be built as one of two versions: A Ford "advertising" truck (touting the virtues of the actual truck) or a "Checkers Supermarket" grocery-getter (complete with printed cardboard boxes), both using vintage-style graphics, typical of the time period.

READ THIS BEFORE YOU BEGIN

- Study the assembly drawings.
- Each plastic part is identified by a number.
- In the assembly drawings, some parts will be marked by a star (*) to indicate plated plastic.
- Scrape plating from areas to be cemented.
- Check the fit of each piece before cementing into place.
- Do not use too much cement to join parts.
- Use only cement for polystyrene plastic.
- Models may be painted to match photos on the box.
- Allow paint to dry thoroughly before handling parts.
- Scrape paint from areas to be cemented.
- For better paint and decal adhesion, wash the plastic parts in a mild detergent solution. Rinse and let air dry.

Every effort has been made to create and manufacture a model kit that is the finest available. If a part may be missing, please write to:



REMOVE AND THROW AWAY
QUITE Y TIRE
À RETIRER ET JETER



DO NOT CEMENT
NO USE PEGAMENTO
NE PAS COLLER



REPEAT SEVERAL TIMES
REPITA VARIAS VECES
A RÉPÉTER PLUSIERS



DECAL (DIP IN WATER)
DECALCOMANIA (MOJE CON AGUA)
DECALCOMANIE (À PLONGER DANS L'EAU)

LEA ESTO ANTES DE EMPEZAR

- Estudie los dibujos de ensamblaje.
- Cada pieza de plástico se identificapor un número.
- En los dibujos de ensamblaje, algunos numeros de las piezas estan marcados con una estrella (*) Indicar plastico laminado.
- Raspe el laminado de las superficies que serán pegadas.
- Verifique que cada pieza encaje bien antes de posición.
- No use demasiado pegamento para unir las piezas.
- Use unicamente pegamento para plástico de poliestirena.
- El modelo puede pintarse de acuerdo con las fotografias de la caja.
- Permita que se seque la pintura completa mente antes de tocar las piezas.
- Raspe la pintura de las superficies que serán pegadas.
- Para una mejor lijacion de la pintura y de las calcomanias lávense las piezas plásti cas en una solución de detergente suave. Enjuague y déjense secar al aire.

Revell-Monogram, Inc.
Consumer Service Department
8601 Waukegan Road
Morton Grove, Illinois 60053

LISEZ CE QUI SUIT AVANT DE COMMENCER LE MONTAGE

- Etudie les schémas d'assemblage.
- Chaque piece plastique porte un numéro d'identification.
- Sur les schemas d'assemblage les pieces dont le numéro comporte une asteriques (*) sont en plastique chrome.
- Grattez le chromage sur les surfaces a coller.
- Contrôler que chaque pièce soit bien cinfirmé avant de la coller a sa place.
- N'utilisez pas trop de colle pour réunir les pieces.
- Utilisez uniquement une colle spéciale pour polystyrene.
- Le modele peut étre peint conformement aux photos surboite.
- Laissez sécher la peinture completement avant de manipuler les pieces.
- Grattez la peinture sur les surfaces devante étre collées.
- Pour assurer la meilleure adhesion possible de la peinture des décalomanies, laver les pieces de plastique avecune légère solution savonneuse. Rinse et laissez sécher a l'aire.

Be sure to include the kit number, part number, description, and your return address.

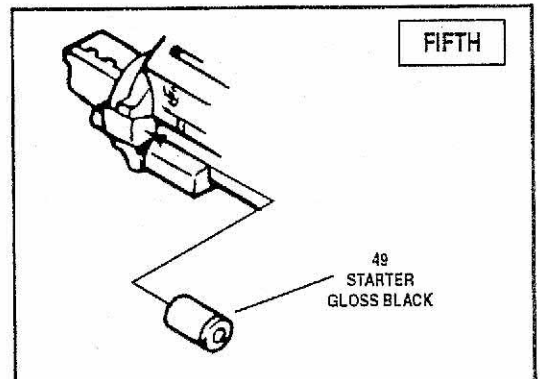
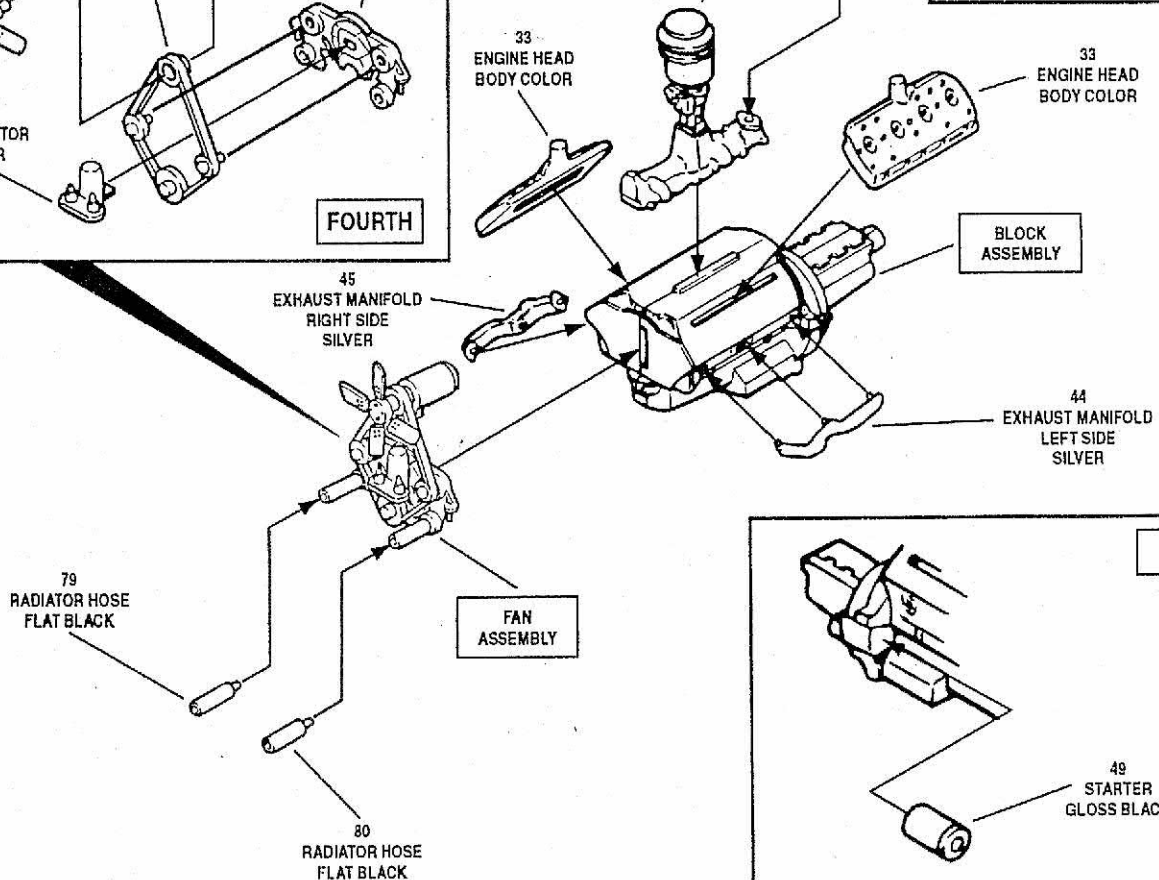
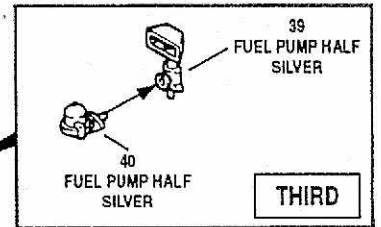
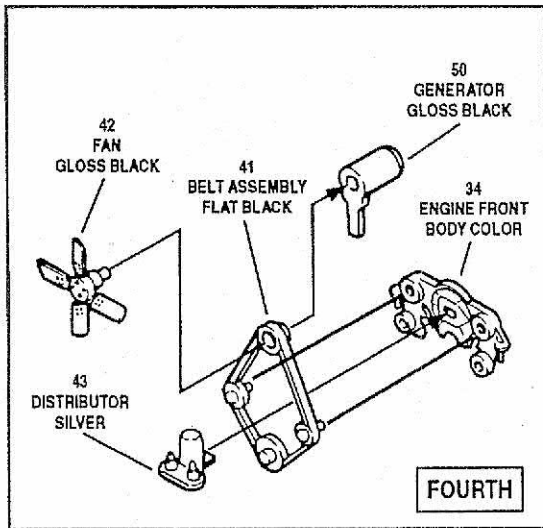
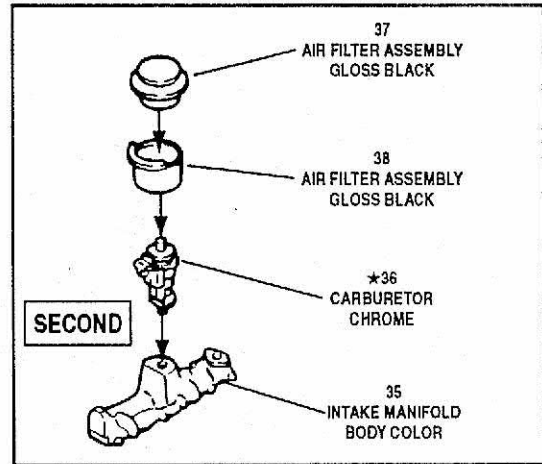
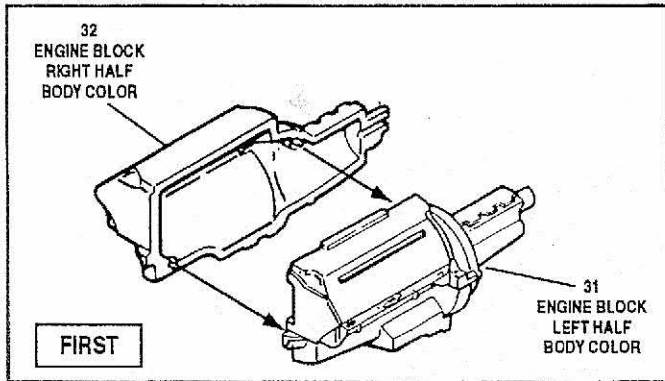
To complete this kit as shown, We recommend the following ProModeler™ paints.

MEDIUM GREEN 88-0029	VERDE	VERT
SILVER 88-0013	PLATA	ARGENT
GLOSS BLACK 88-0001	NEGRO BRILLANTE	NOIR LUSTRE
FLAT BLACK 88-0022	NEGRO APAGADO	NOIR TERNE
SATIN BLACK 88-0016	NEGRO MATE	NOIR MAT
LIGHT GHOST GRAY 88-0034	GRIS CLARO	GRIS CLAIR
GLOSS DARK GREEN 88-0027	VERDE OSCURO	VERT FONCE
OFF WHITE 88-0024	COLOR DE MARFIL	COULEUR D'IVOIRE

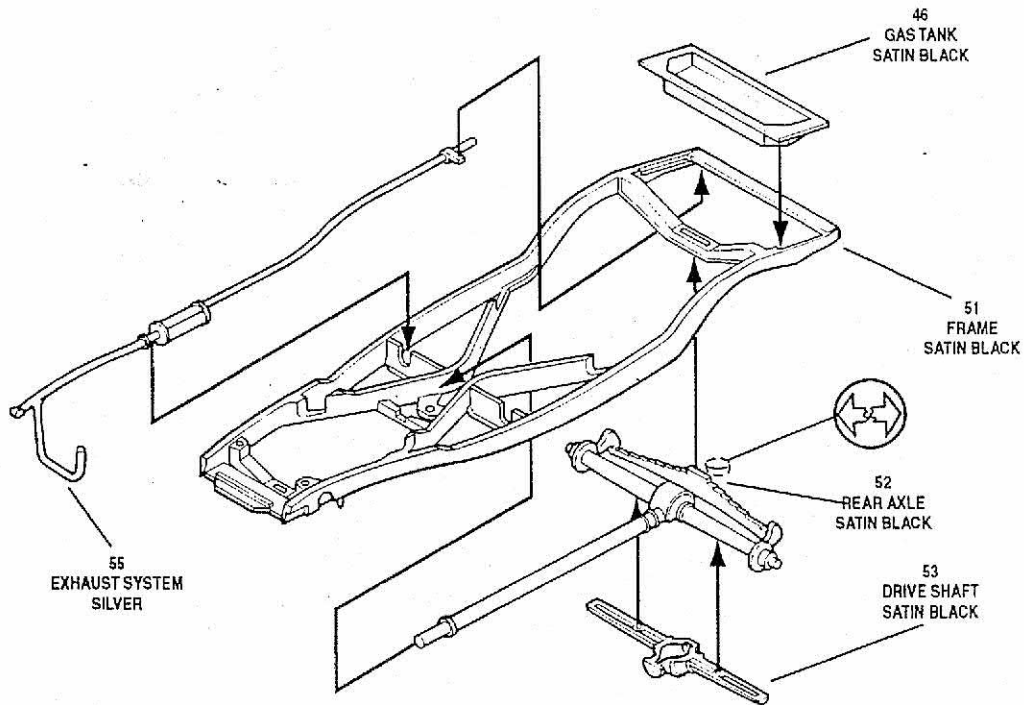
If you have any problems building this model, call our modeling tips hotline at: (800) 833-3570

REVELL-MONOGRAM, INC. Morton Grove, IL Copyright© 1997. All rights reserved. Made in U.S.A.

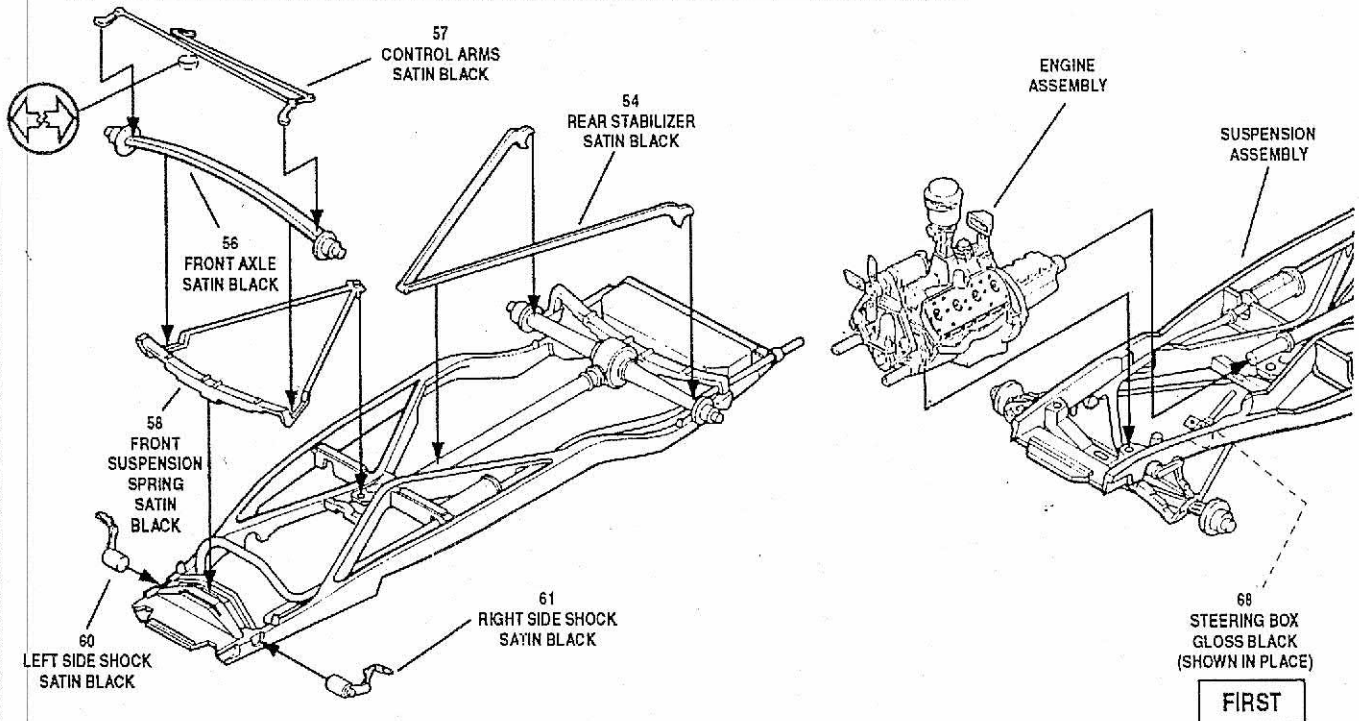
1 ENGINE ASSEMBLY



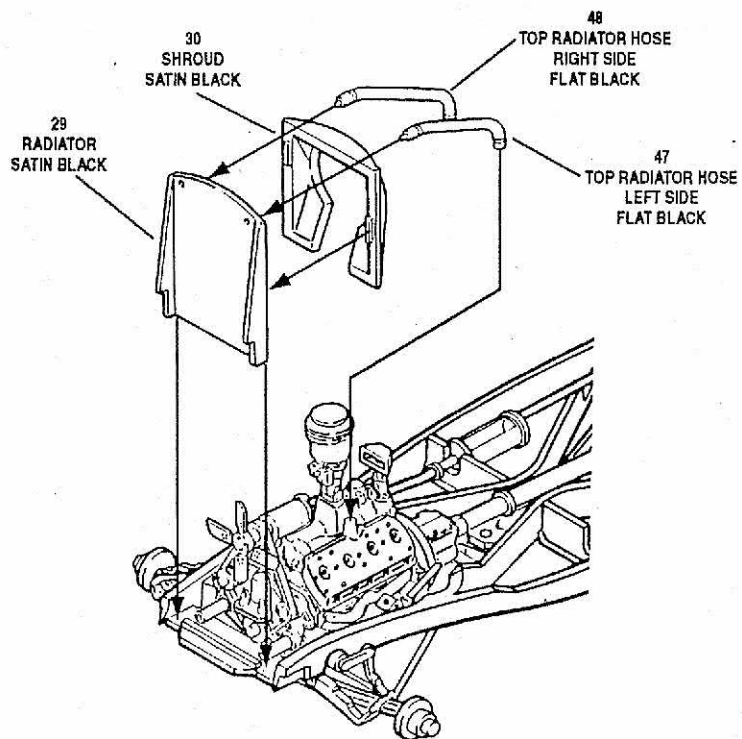
2 REAR SUSPENSION ASSEMBLY



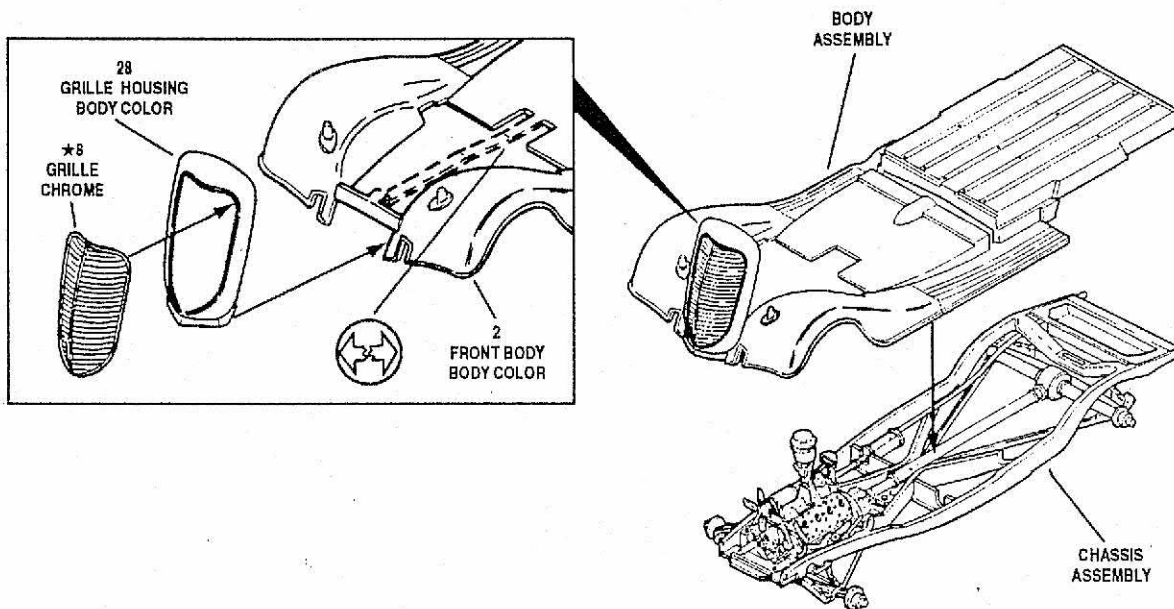
3 FRONT SUSPENSION ASSEMBLY



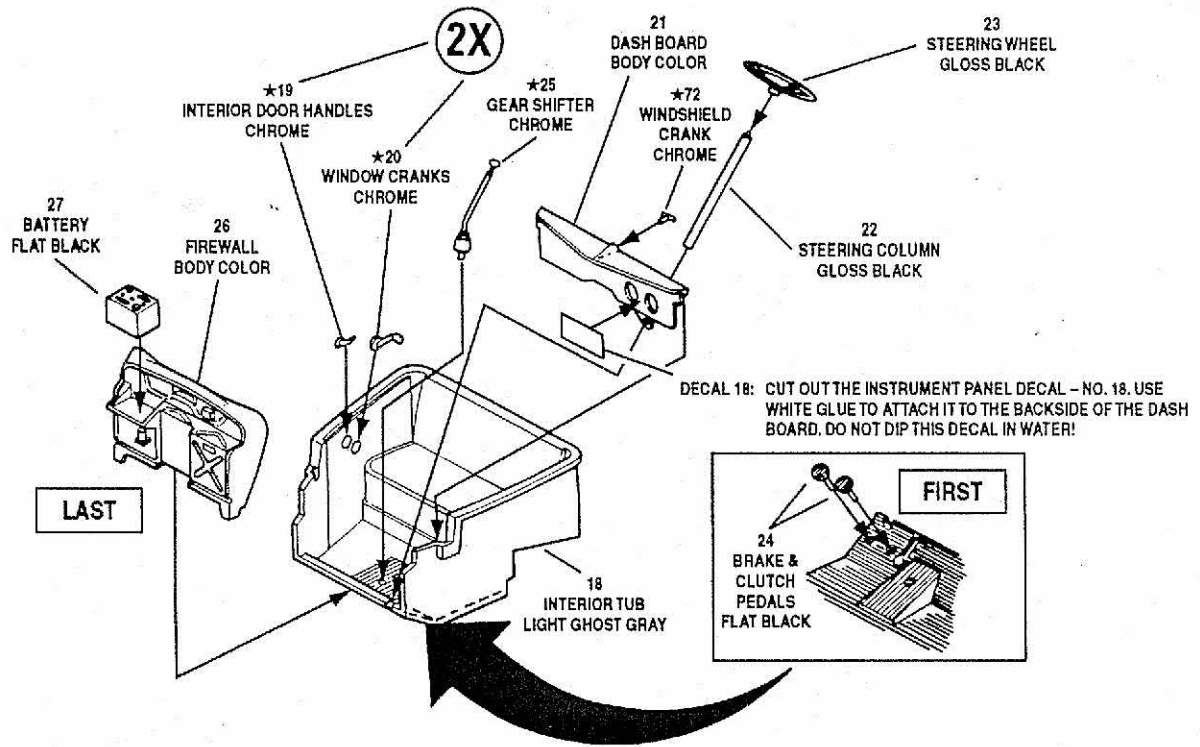
4 RADIATOR & SHROUD ASSEMBLY



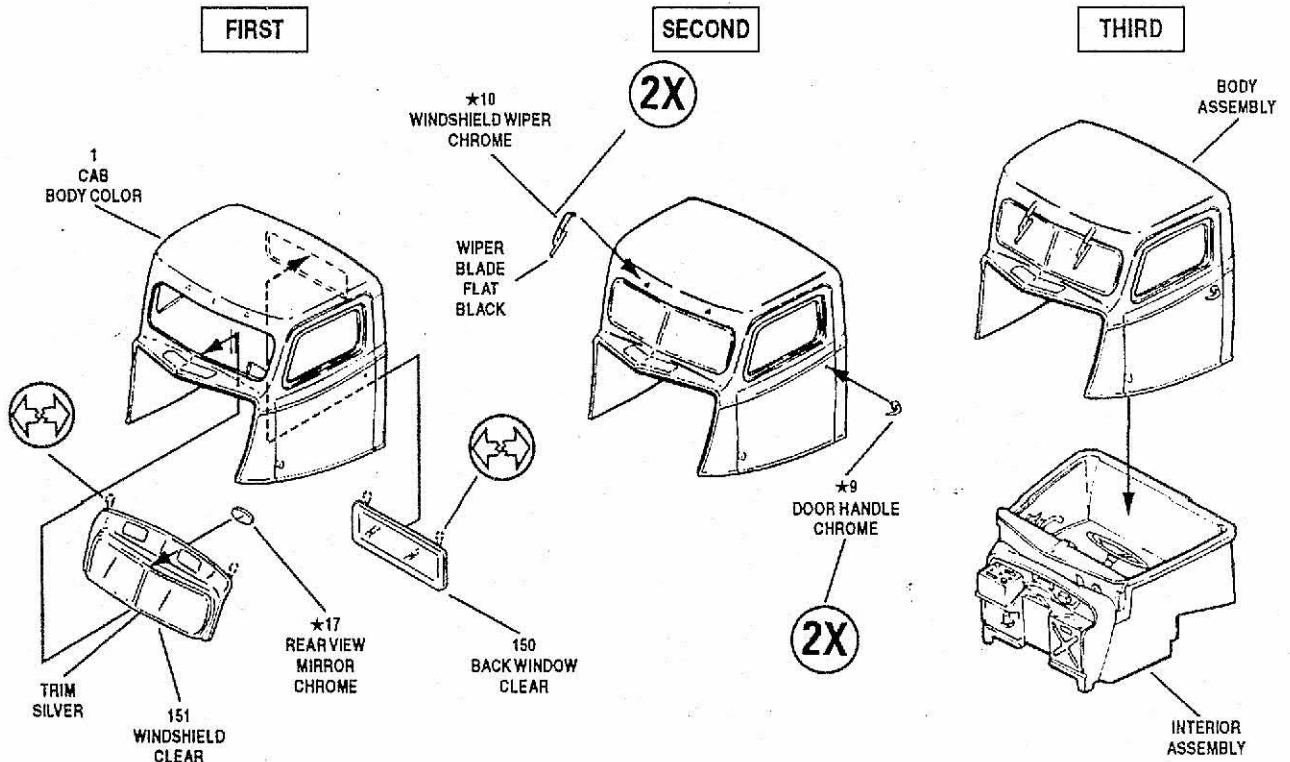
5 FENDER ASSEMBLY



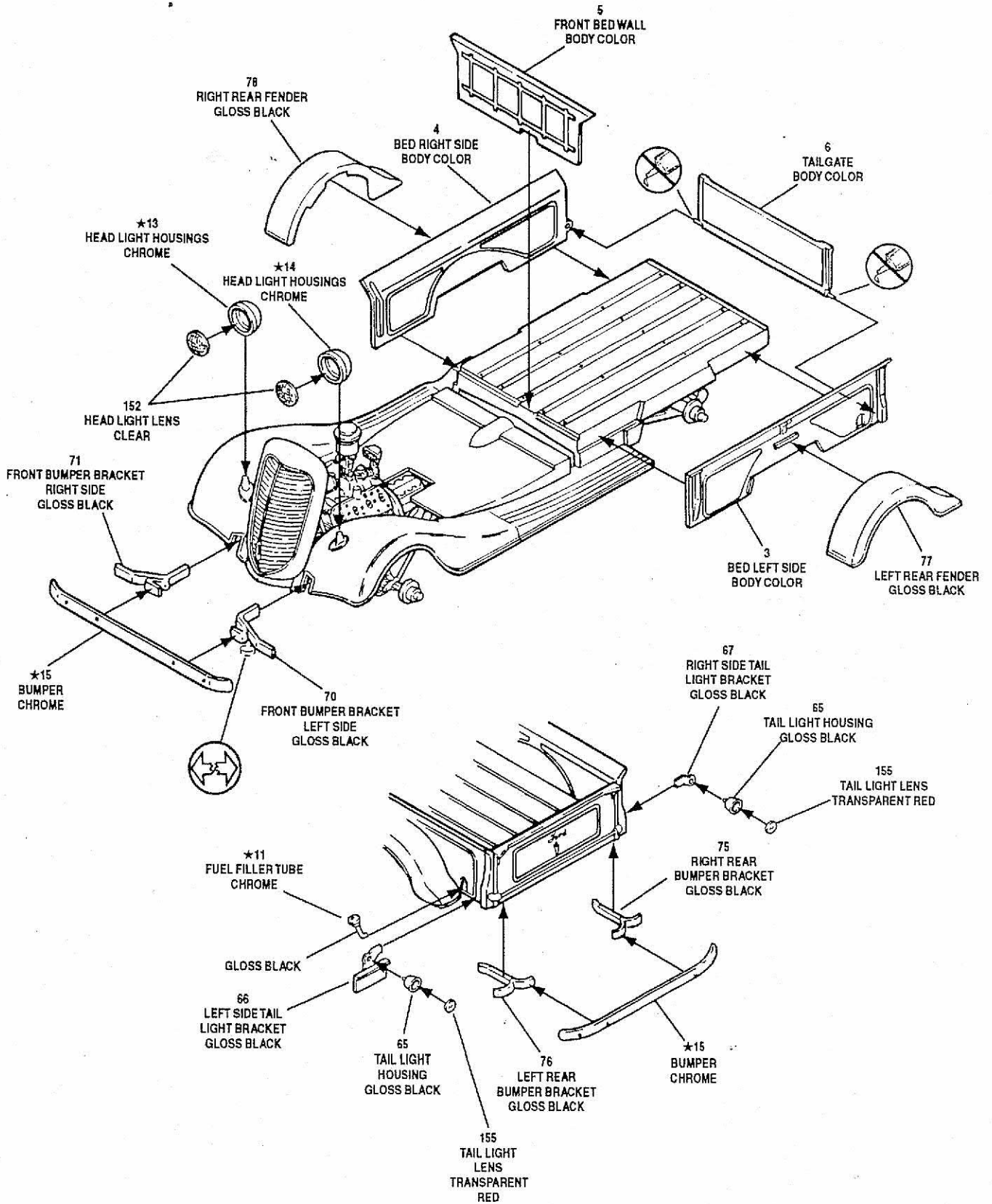
6 INTERIOR ASSEMBLY



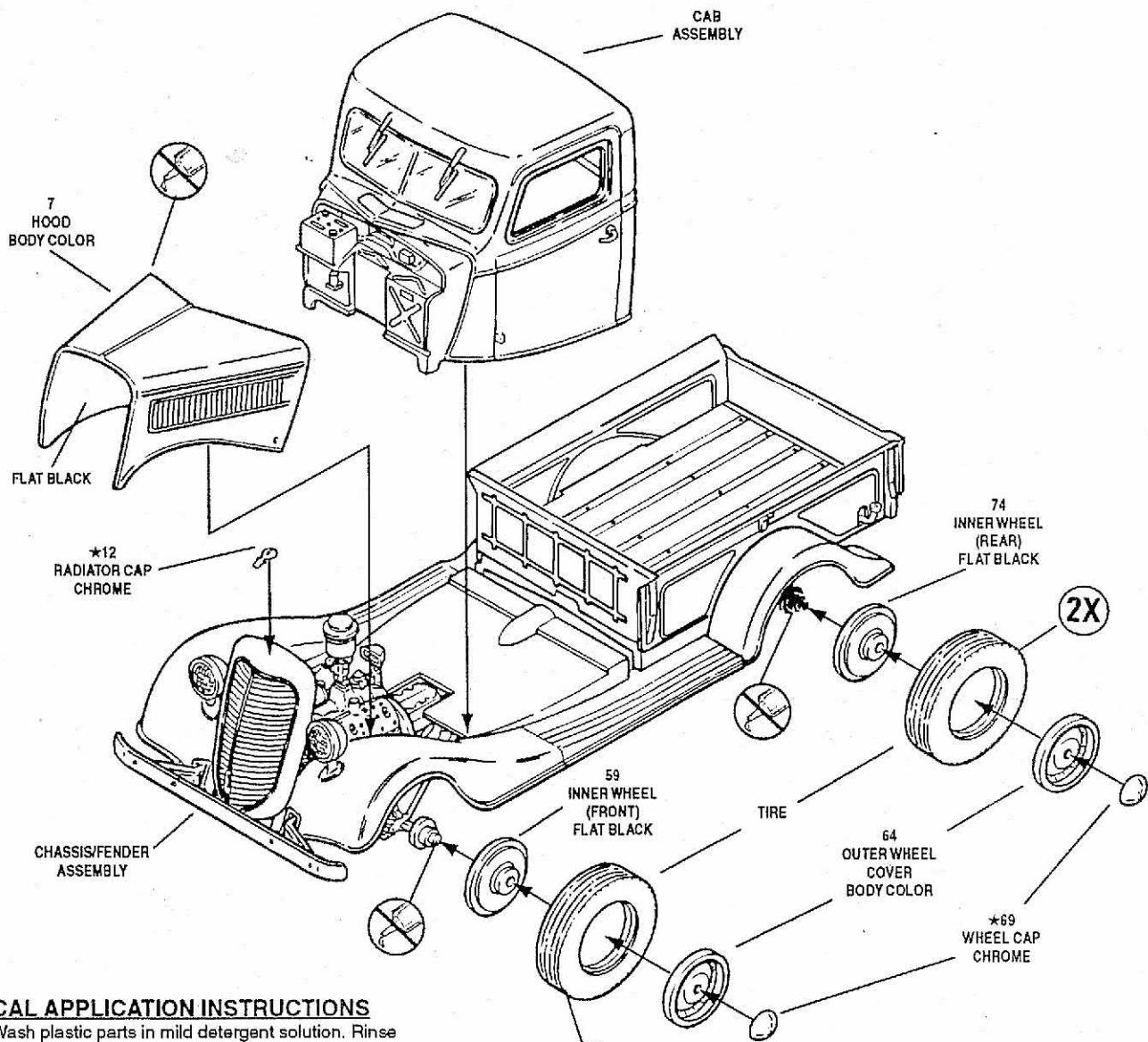
7 CAB ASSEMBLY



8 BED ASSEMBLY



9 FINAL ASSEMBLY

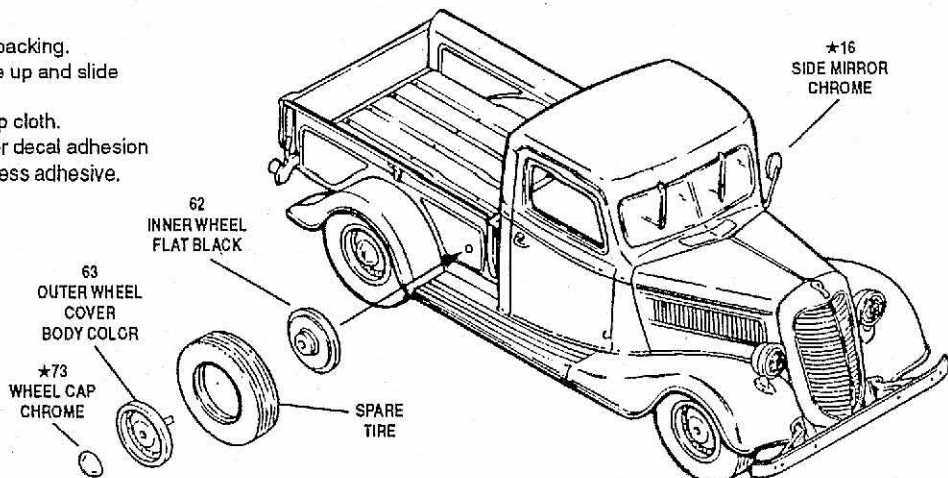


DECAL APPLICATION INSTRUCTIONS

- 1.) Wash plastic parts in mild detergent solution. Rinse and let dry.
- 2.) Cut desired decal from sheet.
- 3.) Dip decal in water for a few seconds.
- 4.) Place wet decal on paper towel.
- 5.) Wait until decal is movable on paper backing.
- 6.) Place decal in position on model, face up and slide backing away.
- 7.) Press out air bubbles with a soft damp cloth.
- 8.) Milkiness that may appear is for better decal adhesion and will dry clear. Wipe away any excess adhesive.
- 9.) Do not touch decal until fully dry.

DECALS NOT COMPATIBLE
WITH SETTING SOLUTIONS
OR SOLVENTS

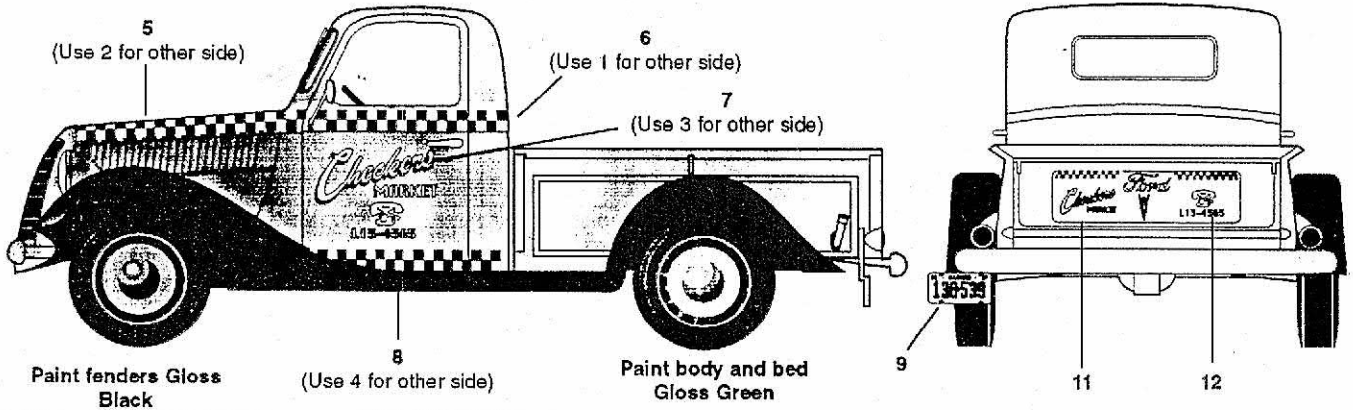
* REMAINING PARTS MAY BE DISCARDED.
* LAS PIEZAS QUE SOBREN PUEDEN
DESCARTARSE.
* SE DEFAIRE DES PIÉCES RESTANTES.



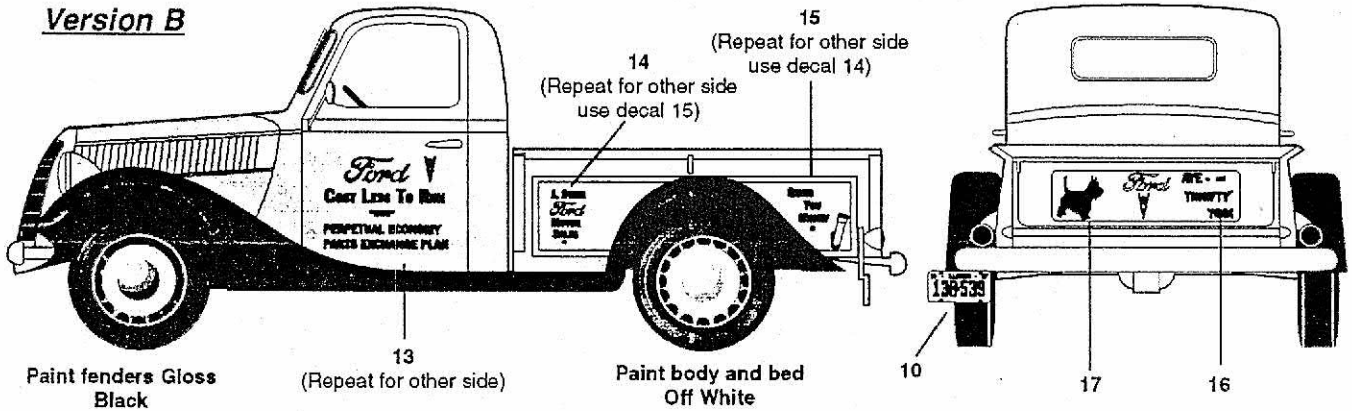
10 DECAL PLACEMENT



Version A



Version B



Box Construction for Version A

A) Cut out box decals number 19 & 20 from the decal sheet.

B) DO NOT DIP IN WATER.

C) Fold at the dotted lines.

D) Use white glue or super glue on the indicated areas and join the box together one side at a time. Follow steps 1 through 4.

Fold

Glue ■■■

