



Schwimmwagen Type 128



**SPECIAL THANKS: Mr. Holger Erdmann
Mr. Thomas Hartwig

The global recession of 1920s made Austrian-German automotive engineer Ferdinand Porsche worked on inexpensive small car projects, on top of racing cars. Yet his designs did not manage to draw interest from automotive manufacturers until 1934, Adolf Hitler discussed with Porsche the possibility of military application of the Volkswagen, a cheap, light-weight, reliable military off-road transport vehicle.

The formal relationship between Porsche and German military commenced 1938, in the same year a prototype was completed: rear-engine, rear-wheel drive, capable to accommodate four battle-dressed troops. With further modifications such as mounting new axles with gear-reduction hubs, providing the car with more torque and more ground-clearance, the Volkswagen 82 was introduced on 1939 and field-tested in the invasion of Poland. The VW82 entered mass production in 1940, more than 5,000 were produced in WWII.

After the invasion of Poland, the German Army realized that amphibious off-roaders were needed to cross rivers and lakes. Once again the VW82 was selected as the prototype. Dr. Porsche was appointed on June 1940, using VW87, which is four-wheel-drive version of VW82, as the platform, utilizing bodytub structure and a retractable screw propeller which provided a speed up to 10 km per hour in water. The first prototype was introduced in September 1940 and designated as VW128. With 2400mm wheelbase (identical to that of VW82), VW128 has more internal space comparing to VW166, a type that mass produced on later days. A total of 30 VW128 were produced and issued for high ranking officers, and saw active services till end of the war.

1920年代末の世界恐慌を契機に、ドイツの自動車技術者であったフェルディナント・ポルシェ博士は、低価格な小型車の開発計画に取り組み始めた。しかし、博士の設計がドイツの自動車製造業界から関心をもたれたのは1934年のことであった。アドルフ・ヒトラーは、博士が設計した「国民車」の、安価・軽量な信頼性の高い軍用輸送車への転用の可能性について、博士と協議したのだった。

ポルシェとドイツ軍との関係は、1938年に始まり、その年のうちに、リアエンジン・後輪駆動・武装した4名の兵士が乗車できる試作車が完成した。さらに改良を加え、新型の減速装置を搭載し、エンジントルクを増し、走破性を向上させたものが、VW82として1939年に登場し、ポーランド侵攻作戦において、実戦テストが実施されたのであった。1940年に量産に入り、第二次大戦中に5000輦以上が生産されたのである。

ポーランド侵攻の結果、ドイツ陸軍は渡河作戦時の水陸両用車の必要性を強く認識した。試作車のために再度VW82が選ばれ、ポルシェ博士は、その四輪駆動型のVW87をベースとして利用、船型ボディを採用、水上最高速度10km/hを発揮する跳ね上げ式のプロペラスクリューを搭載し、最初の試作車は、1940年9月にVW128として導入された。VW82と同じ2400mmのホイールベースを持つVW128は、後に量産されたVW166に比べて車内空間に余裕があった。30輦のVW128が生産され、前線の高級将校向けに配備され、大戦の終了まで使用されたのだった。

1920年代末,經濟大恐慌席捲全球。德國的汽車工程師斐迪南·保時捷博士希望在原本擅長的跑車設計之外,專注於小型車輛的開發來渡過這個危機。但他的想法始終得不到各個車廠的興趣,直到1934年保時捷的小型車輛得到德國總理希特勒的賞識,期望他的設計除了運用在德國國民車之外,還能夠成為兼具廉價、輕量而又可靠的軍用越野運輸車輛。

1938年保時捷正式與軍方展開合作,該年年底前採取後置引擎、後輪驅動並提供四名乘員搭載的原型車完成。日後在增加底盤高度強化了越野性能之後,於1939年問市的VW 82型先期生產車被少量的投入波蘭戰役,1940年起VW 82型正式量產,在整個戰爭期間共生產了超過5 0000輛的82型越野車。

波蘭戰役結束後,德國軍方體認到需要提供步兵一種能夠快速穿越河湖交錯地型的兩棲車輛,並選擇二輪驅動的VW 82做為發展水陸兩棲越野車的原型。1940年6月,保時捷博士再次受到軍方的委託,以VW 82改進而成的四輪驅動型VW87做為基礎。再搭配上捨去車門的船型車身,尾部加裝的一具可摺疊收納的三葉螺旋推進器作為主要的水中的動力來源,在水中可以達到每小時10公里的航行速度。第一輛原型車於1940年9月完成,被命名做VW 128型,軸距與VW 82型相同的2400mm,與日後另一款大量生產的VW166型相較,VW 128有著較為寬敞的車內空間,在通過測試後VW 128得到了三十輛的訂單,並配發部隊做為高級長官座車,一直活躍至大戰結束。

Illustration:圖示說明



Method For Applying Decals: 水貼紙使用說明:

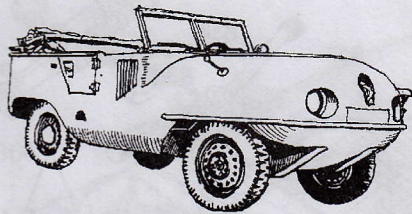
1. Clean Model Surface With Wet Cloth. 1.將模型表面擦乾淨
2. Cut Out Of Decal Sheet And Dip Them In Water For 15 Seconds. 2.將貼紙剪下泡入清水中約15秒
3. Place it on proper position on model. 3.將泡濕之貼紙取出置於欲貼處旁
4. Slide off base paper leaving decals On Model With Wet Finger Tip. 4.用指尖輕推貼紙表面使其滑出底紙
5. Move Decals To Exact Position, Push Out Excess Water Under Decal With Soft Cotton Cloth. 5.將貼紙調整至適當位置並輕擦拭水份
6. When Decals Get Dry Then Complete. 6.待其自然乾燥後即完成

Color list: 塗料表

Color	Brand	Gunze Sangyo			Humbrol	Revell	Lifecolor
		Hobby Color	Mr.Color	Mr.Color Spray			
Dark Green	深綠	H405	C70	J70	149	363	UA01
German gray	德國灰	H32	C40	J40	92	79	UA073
Red	紅	H3	C3	J3	19	31	LC56
Red brown	紅褐	H47/H406	C41	J41	160	383	UA085
Sandy yellow	砂黃	H79/H403	C39	J39	83	16	UA081
Silver	銀	H8	C8	J8	11	90	LC74
Steel	黑鐵	H18	C28	J28	53	91	LC76
Tire black	輪胎黑	H77	C33+C62		85	302	LC02
Wood brown	木棕	H37	C43		169		FS12
Yellow FS13538	黃	H329	C329		188		LC53

Germany army Schwimmwagen Volkswagen

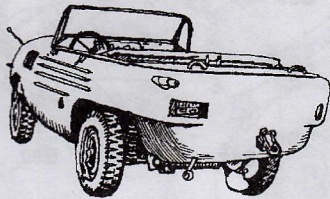
Shin. Ueda
上田 信



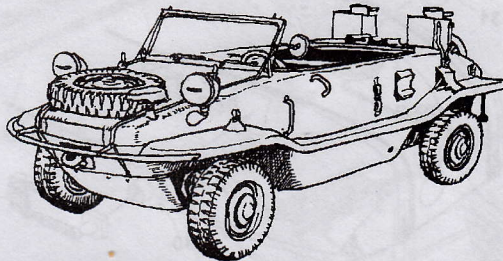
Amphibious Trippel SG 6 4x4 Vehicle
1938 early version. Eight seats.



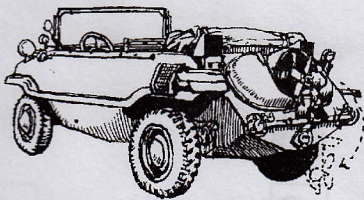
Amphibious Trippel SG 6
1941 modification version. Four seats.



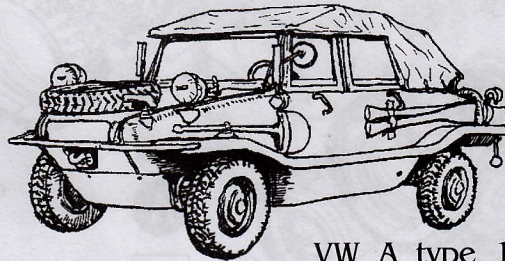
Retractable screw propeller
Trippel and Volkswagen were bidding the project. Eventually there were 1000 produced, issued to the Waffen-SS.



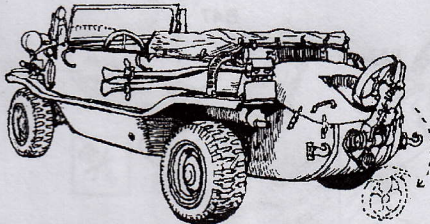
Volkswagen Type 128
150 of them were produced in 1941 issued to the Wehrmacht.



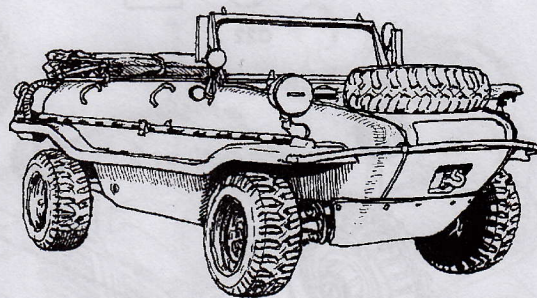
Volkswagen Type 128
Prototype. The retractable propeller design is suitable for off-road.



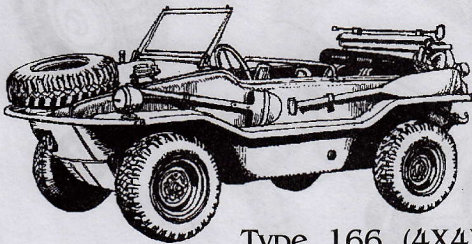
VW A type 128
also known as Gross.



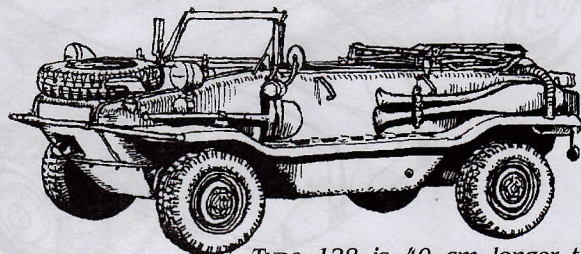
Volkswagen Schwimmwagen is an amphibious 4x4 vehicle mainly used on recon and liaison missions. They also saw services in Waffen-SS, Fallschirmjager and other elite units.



Different light and rear-view mirror variants

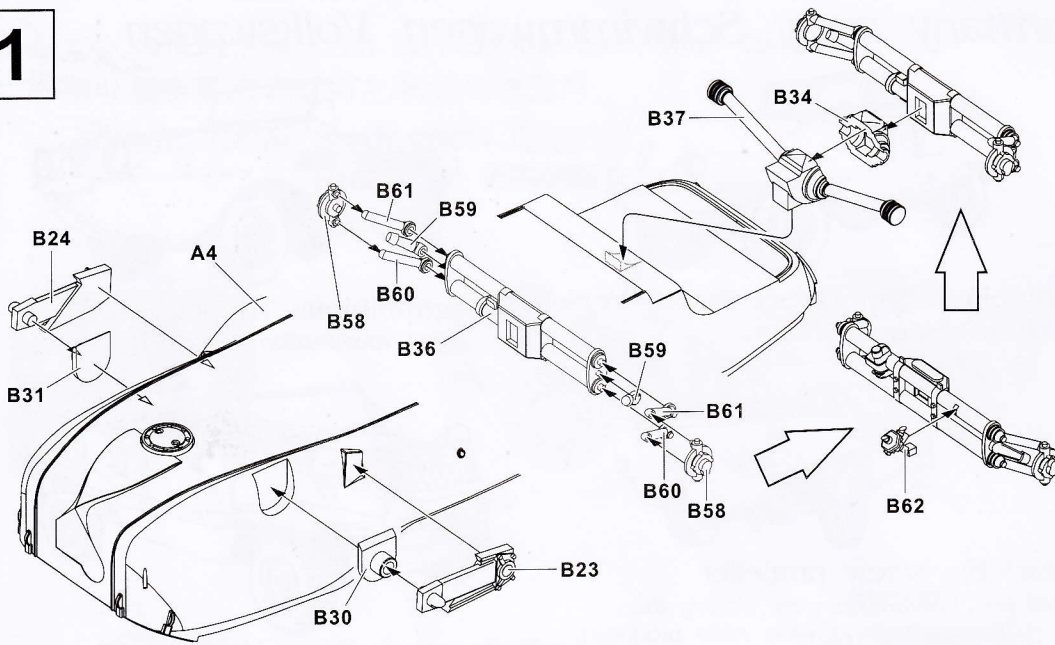


Type 166 (4X4)
modified from Type 128.
Mass production started from this model.

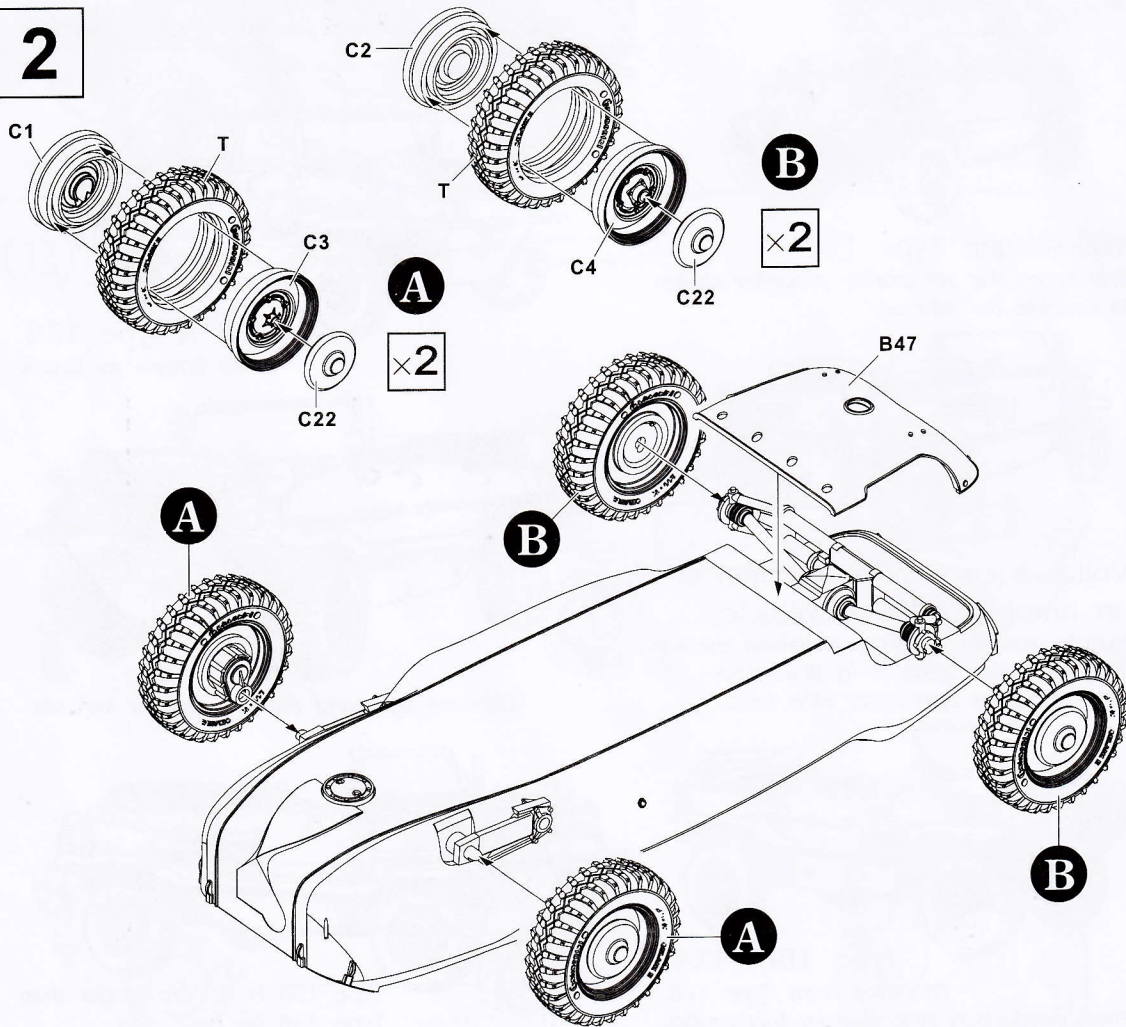


Type 128 is 40 cm longer than Type 166 on back seat.

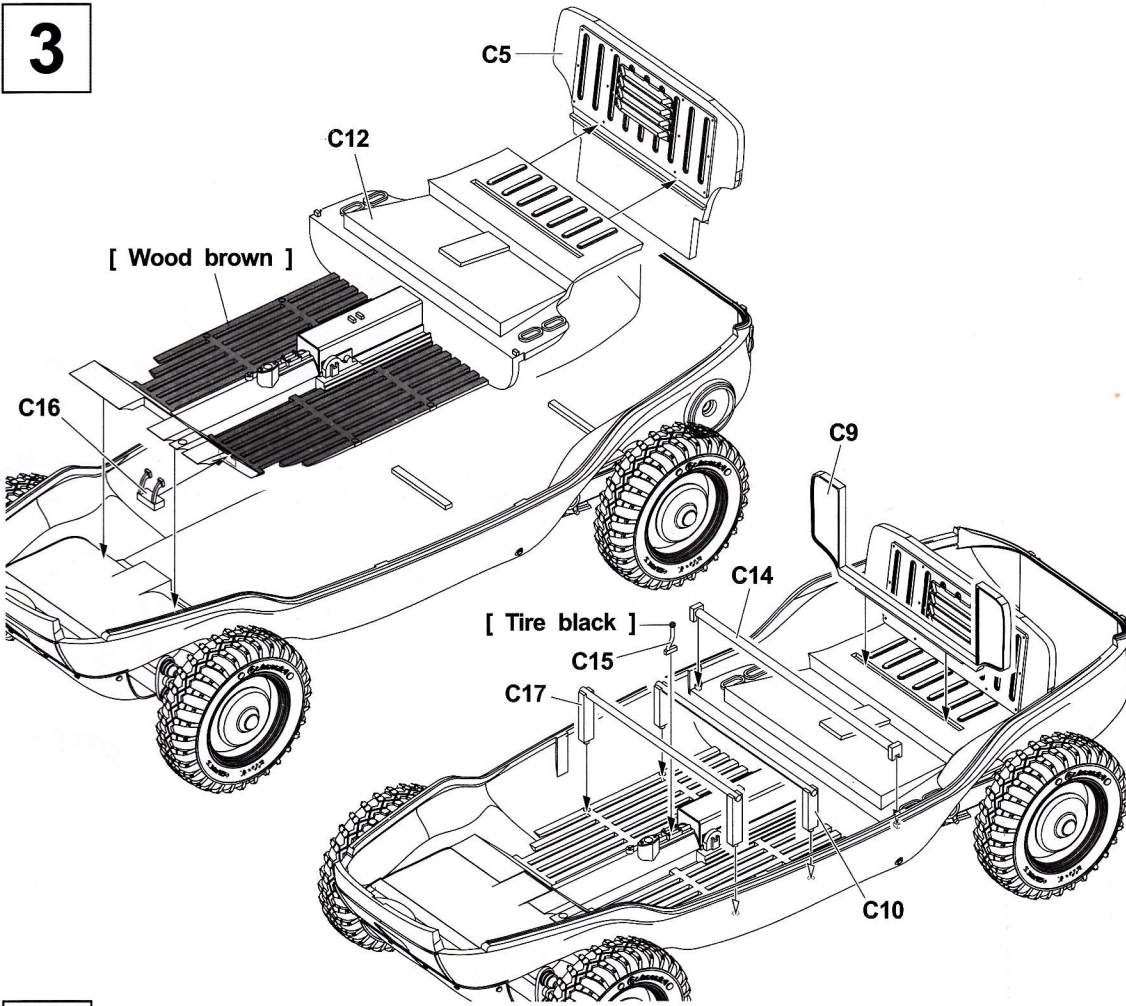
1



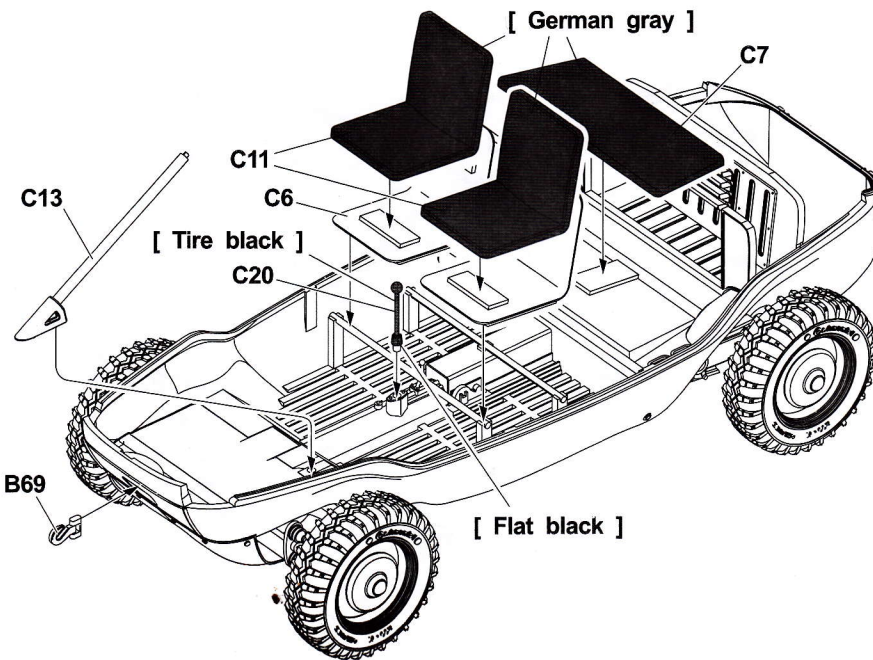
2



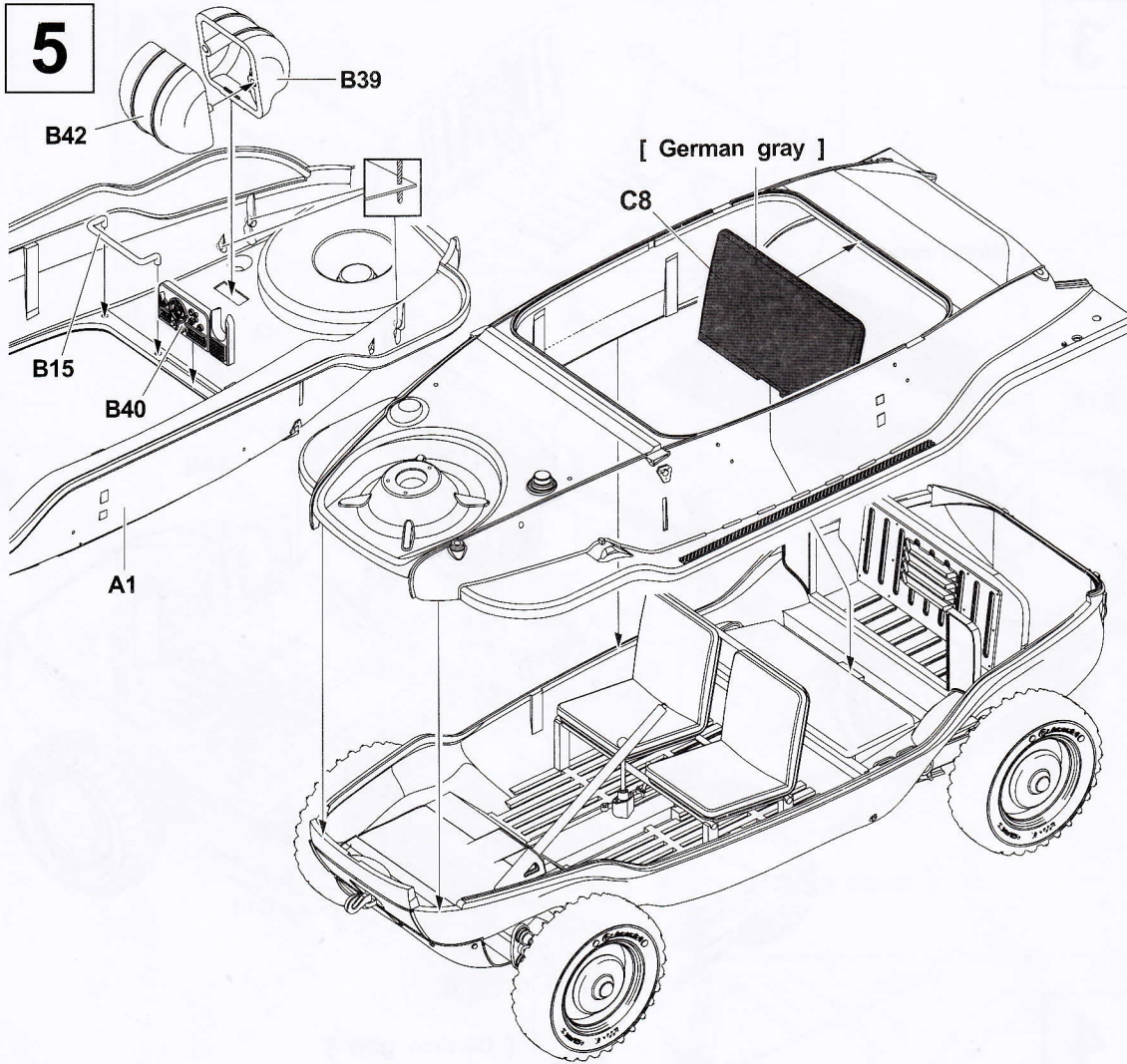
3



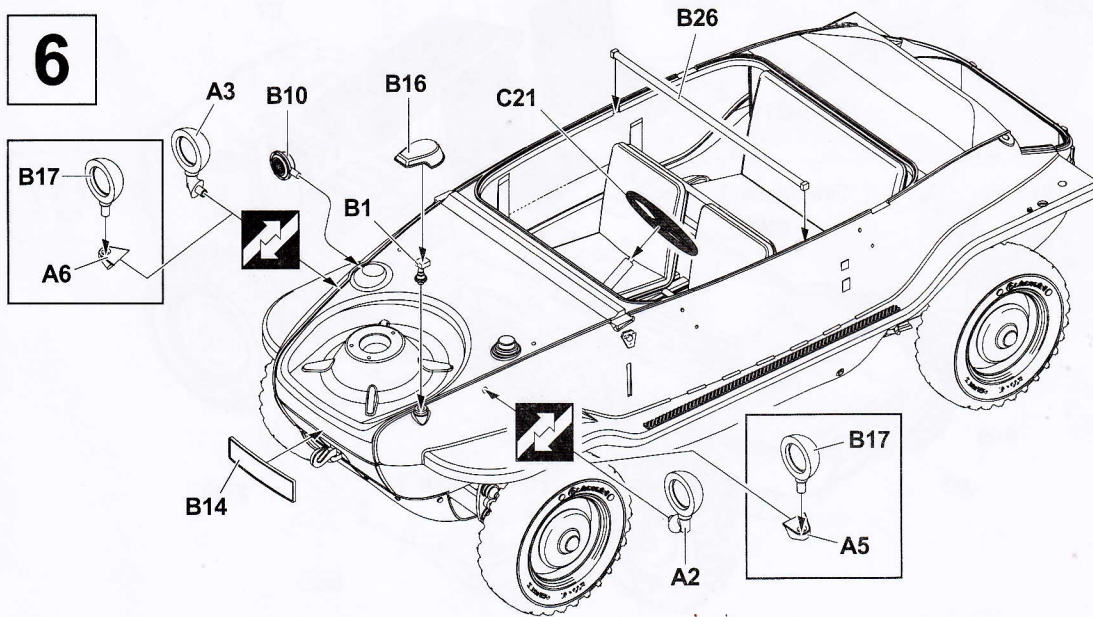
4



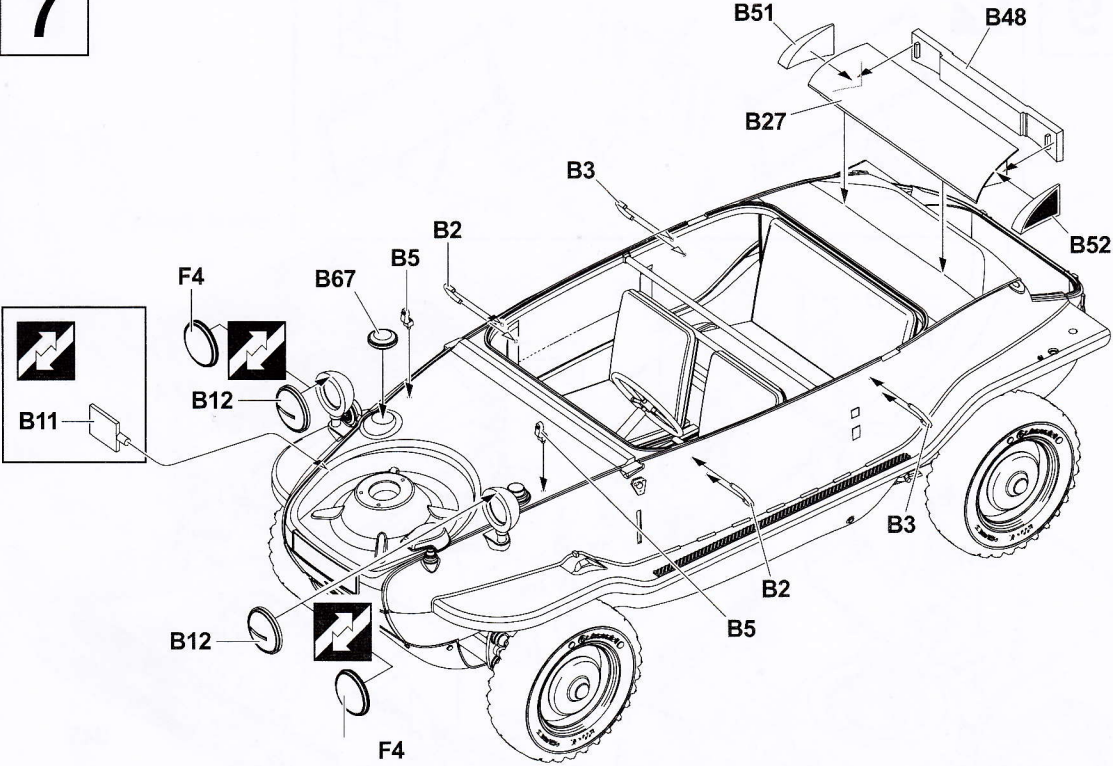
5



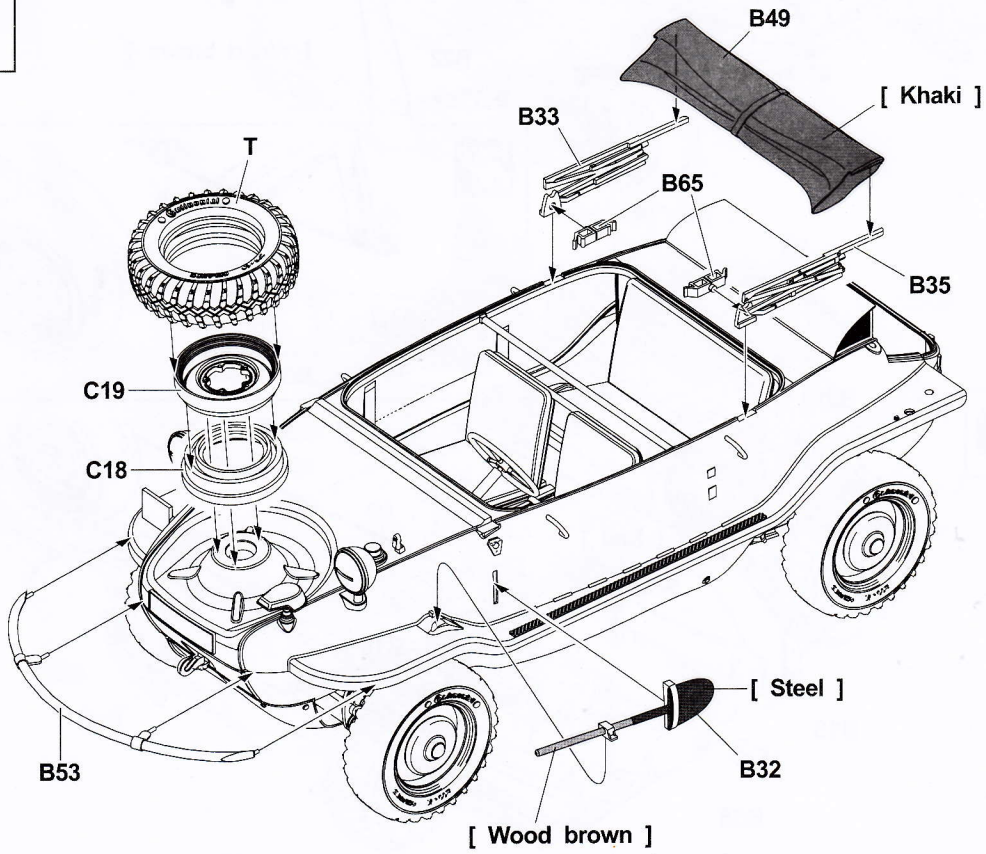
6



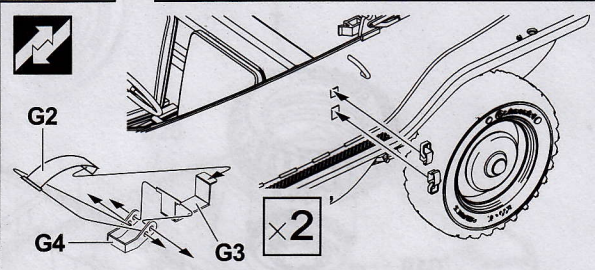
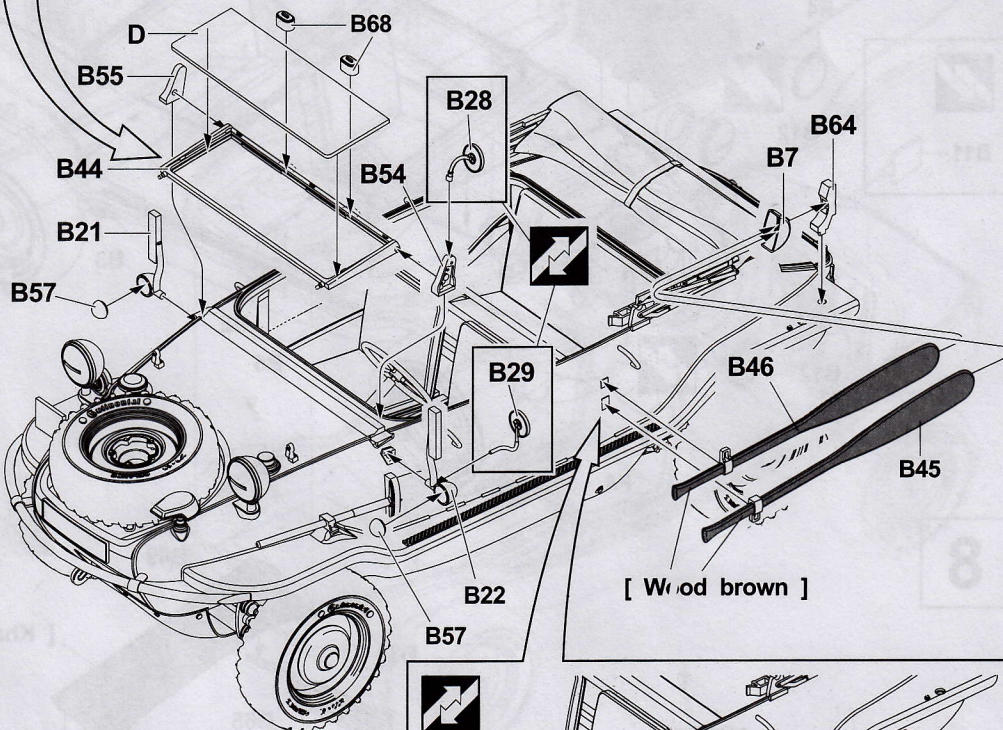
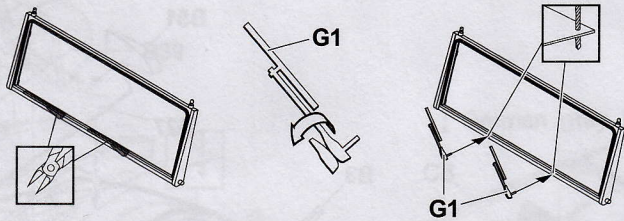
7



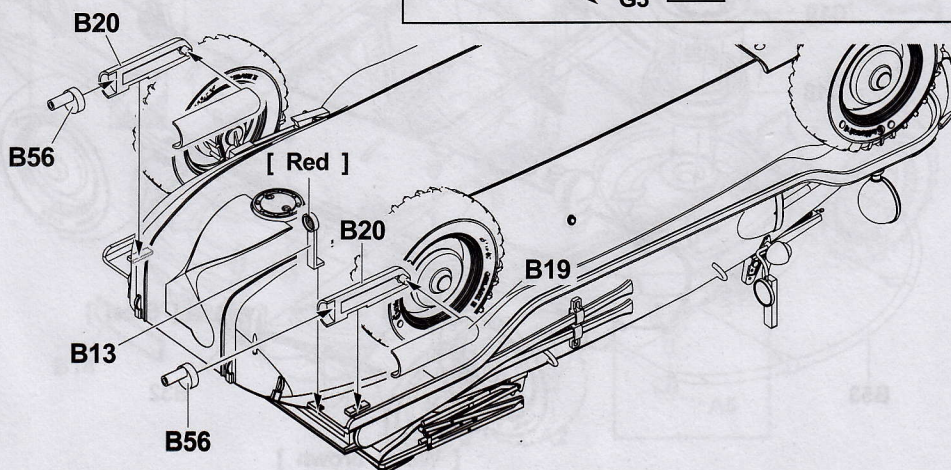
8



9



10



11

[Orange]

B66

[Red] B66

B66

B9

B25

B9

B63

B4

[Flat white]

[Flat black]

B50

B50

B8

[Orange]

[Red]

B8

B6

B69

B6

B69

12

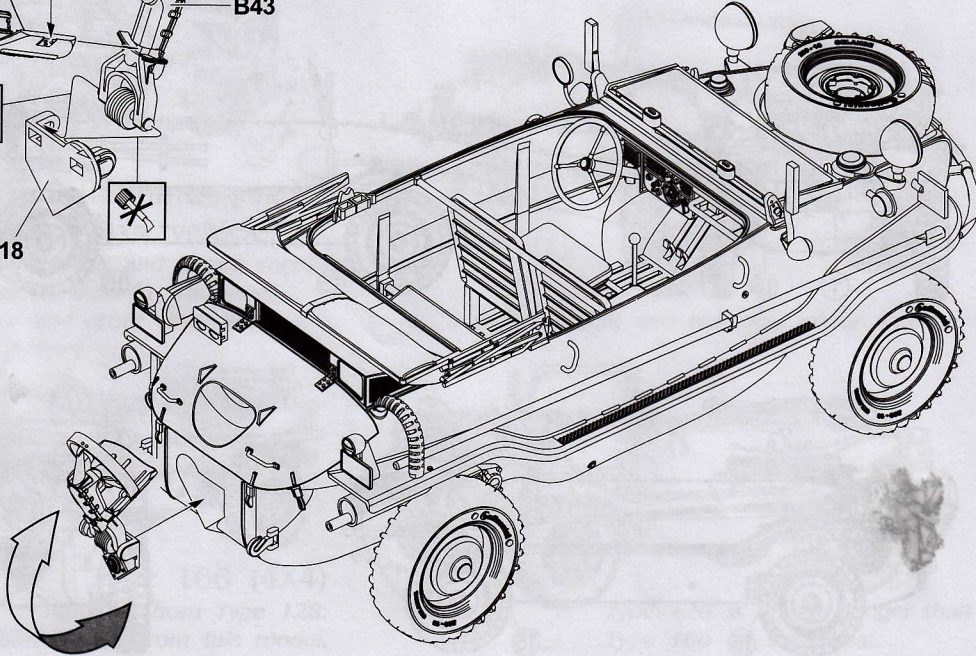
B41

B38

B43

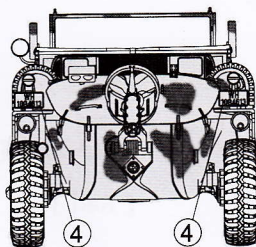
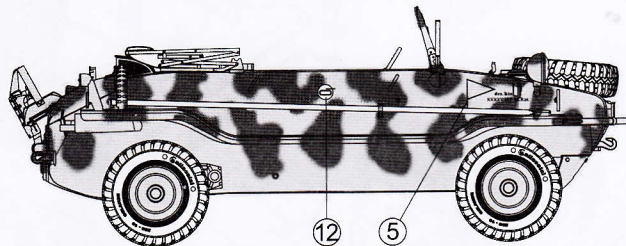
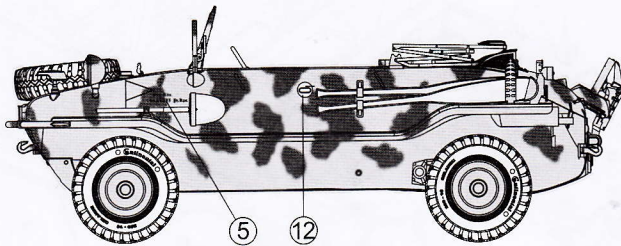
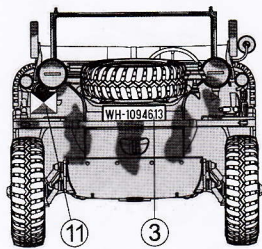


B18

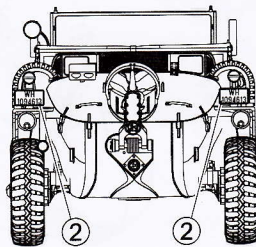
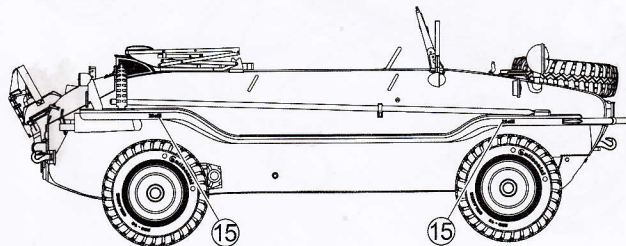
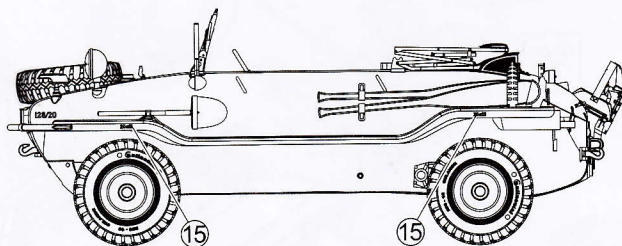
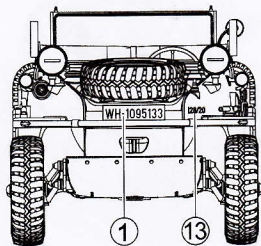


A XXXXVIII.Pz.Kps., Left Bank of the Elbe, May 1945.
 第48裝甲軍,年易北河左岸,1945年五月

Body Color: Sandy yellow
 Red brown



B Body Color: German gray



C

Pz.Aufkl.Abt. 6, Sep. 1944.

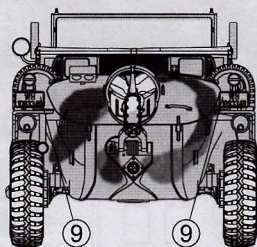
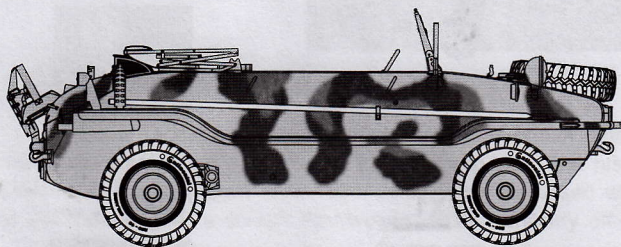
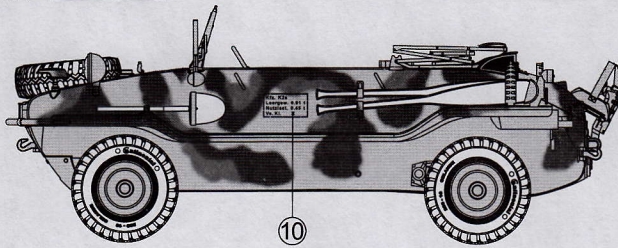
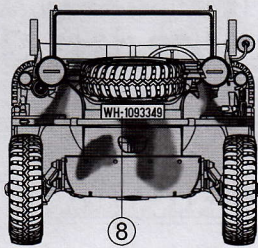
第六装甲師偵搜營, 1944年九月



Body Color: Sandy yellow

Dark Green

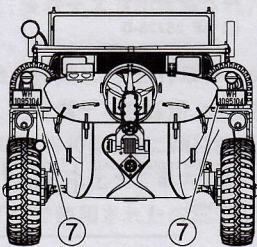
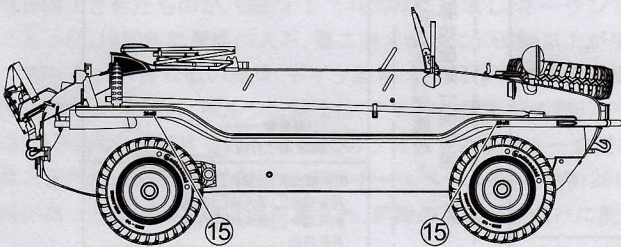
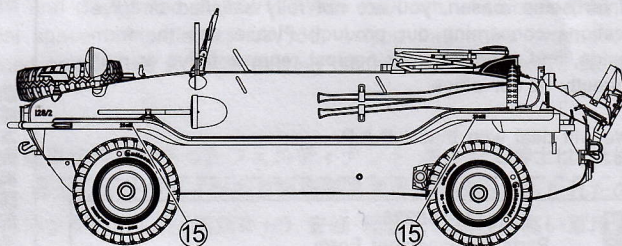
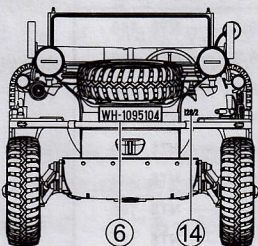
Red brown



D

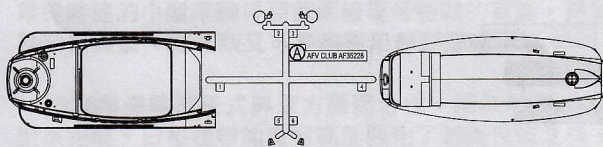


Body Color: German gray

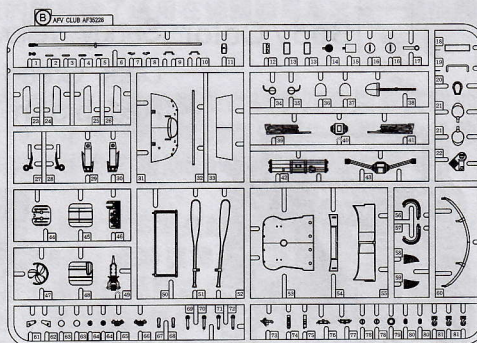


PARTS LIST 零件表

A X1 AF 35228

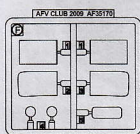


B X1 AF 35228

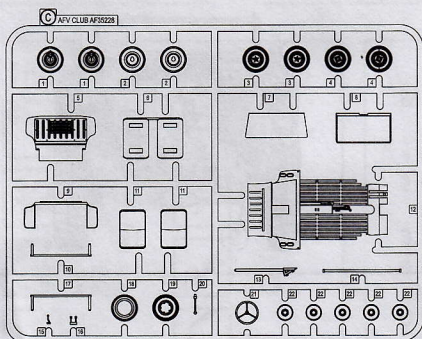


F X1

AF 35170



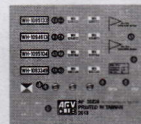
C X1 AF 35228



T X5 AF 35228



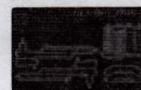
J X1 AF 35228



D X1



G X1 AF 35228



Instructions:

If for some reason, you are not fully satisfied or have questions concerning our product; Please use the form provide, and send it to our nearest representative or mail it directly to our office.

We will deal with that A.S.A.P.

限臺灣地區使用 For Taiwanese use only!

AF 35228 零件補充申請表		申請人 姓名 地址 電話
<input type="checkbox"/>	AF 35228-A — NT\$ 150	
<input type="checkbox"/>	AF 35228-B — NT\$ 180	
<input type="checkbox"/>	AF 35228-C — NT\$ 150	
<input type="checkbox"/>	AF 35228-D — NT\$ 60	
<input type="checkbox"/>	AF 35170-F — NT\$ 150	
<input type="checkbox"/>	AF 35228-G — NT\$ 120	
<input type="checkbox"/>	AF 35228-J — NT\$ 160	
<input type="checkbox"/>	AF 35228-T — NT\$ 120	
+郵寄費 — NT\$ 80		
(請填) 總計NT\$ _____		
零件補充原因:(請於 <input type="checkbox"/> 打 <input checked="" type="checkbox"/>) 原包裝即 <input type="checkbox"/> 遺失或 <input type="checkbox"/> 毀損, 製作途中 <input type="checkbox"/> 遺失或 <input type="checkbox"/> 毀損, 其他原因 _____		

總代理戰鷹企業 客服部收本公司將儘速為您處理。
請將本表與該部品相同金額之郵政匯票一同寄至。



AF 35228 Parts Replacement Form

- | | |
|-------------------------------------|-------------------------------------|
| <input type="checkbox"/> AF 35228-A | <input type="checkbox"/> AF 35170-F |
| <input type="checkbox"/> AF 35228-B | <input type="checkbox"/> AF 35228-G |
| <input type="checkbox"/> AF 35228-C | <input type="checkbox"/> AF 35228-J |
| <input type="checkbox"/> AF 35228-D | <input type="checkbox"/> AF 35228-T |

Reason for replacement: Missing
 Broken

Signature: _____