

Brewster F2A Buffalo Aces

World War II

CATNo 72-117

PRINT+SCALE

INFO_PRINTSCALE@BK.RU

SCALE 1/72

- ① Buffalo I, W8245, 67 Squadron (RAF), flown by Sgt. Williams, Burma, December 1941

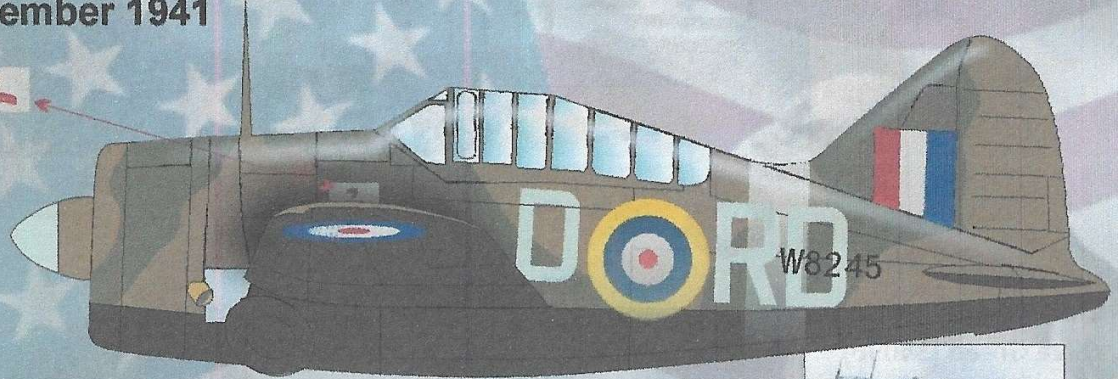
Colours:

Dark Green (FS 24079)

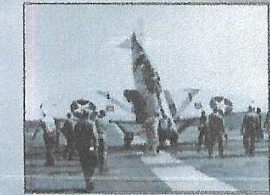
Dark Earth (FS 30118)

Sky (FS 34424)

Matt Black



- ② F2A-1, BuNo 1393, VF-3 off USS Saratoga, flown by Lt. Thatch, March 1940



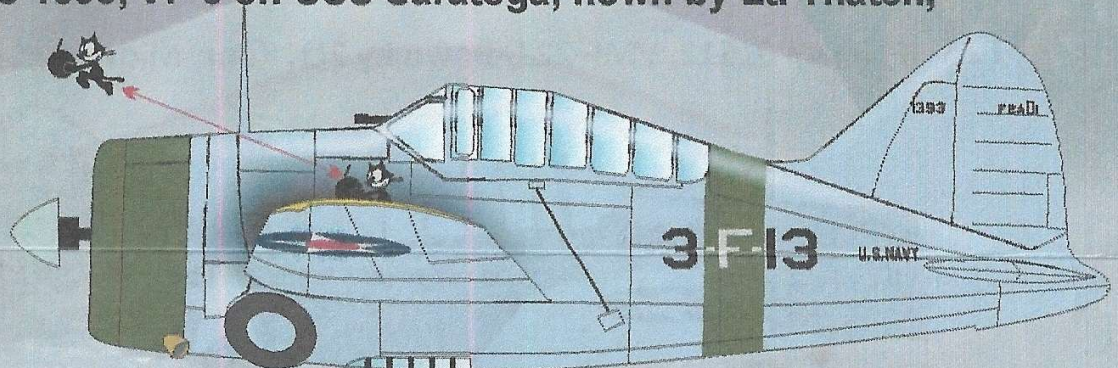
Colours:

Overall aluminum

lacquer finish with

orange-yellow wing surfaces

and white tail surfaces. The band around the fuselage, cowling and upper wing is "willow green".



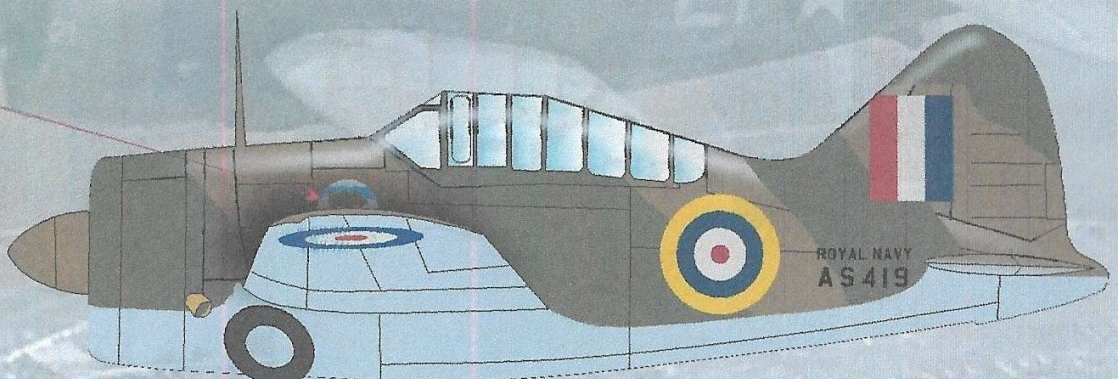
- ③ Buffalo I, AS419, 805 NAS, flown by Lt. Brabner, Crete, March 1941

Colours:

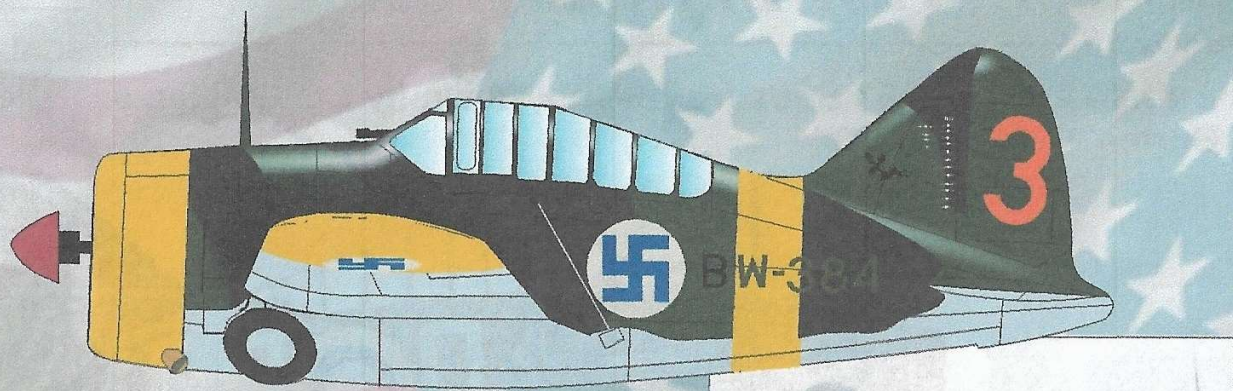
Dark Green (FS 24079)

Dark Earth (FS 30118)

Sky (FS 34424)



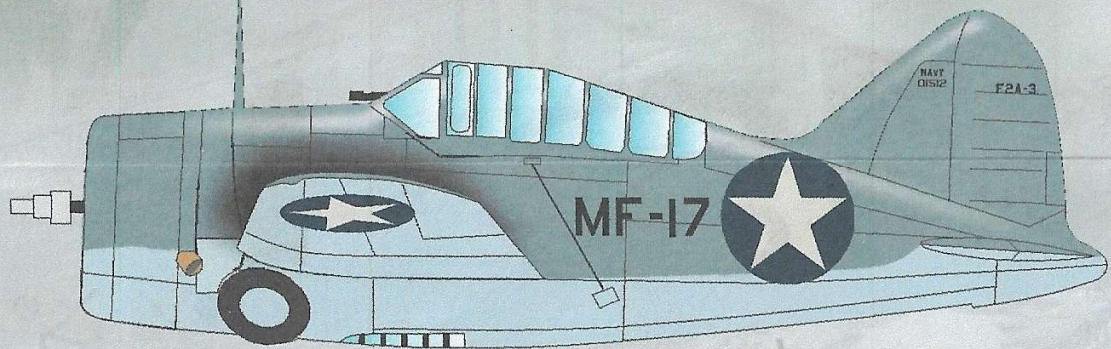
4 Brewster Model 239, BW-384, 2/LeLv 24, flown by 2Lt. Nissinen, May 1942



Colours:
Black(FS 37038)
Olive Green (34096)
Light Grey (FS 36440)
Yellow (FS 13655)

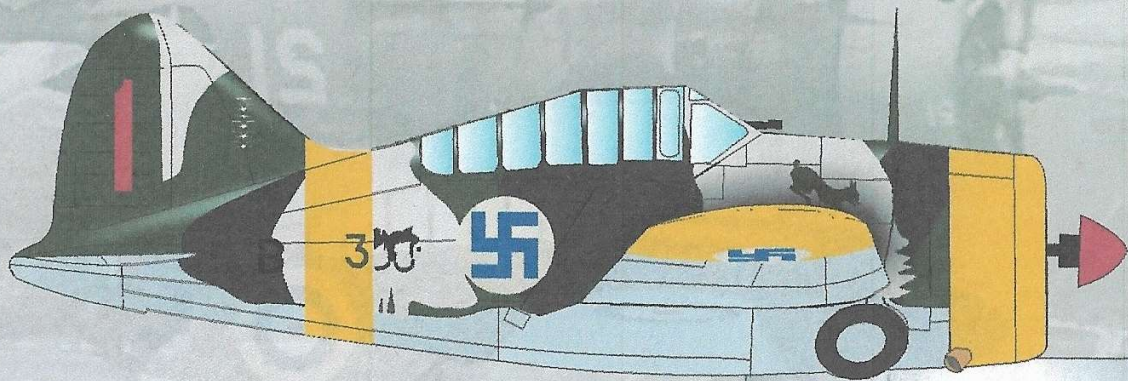


5 F2A-3P, BuNo 01512, VMF-221, flown by 2Lt. Kunz, Midway Island, June 1942



Colours:
Non-Specular Blue-Gray (FS 35189) over Non-Specular Light Gray (FS 36440).

6 Brewster Model 239, BW-368, 3/LeLv 24, flown by Sgt. Katajainen, March 1942



Colours:
Black(FS 37038)
Olive Green (34096)
Light Grey (FS 36440)
Yellow (FS 13655)
White



7 Brewster Model 239, BW-393, 1/LeLv 24, flown by 1Lt. Wind, January 1943



Colours:

- Black (FS 37038)
- Olive Green (34096)
- Light Grey (FS 36440)
- Yellow (FS 13655)
- White



8 Buffalo I, AN213, 453 Squadron (RAAF), flown by Sqn Ldr Harper, Singapore, December 1941

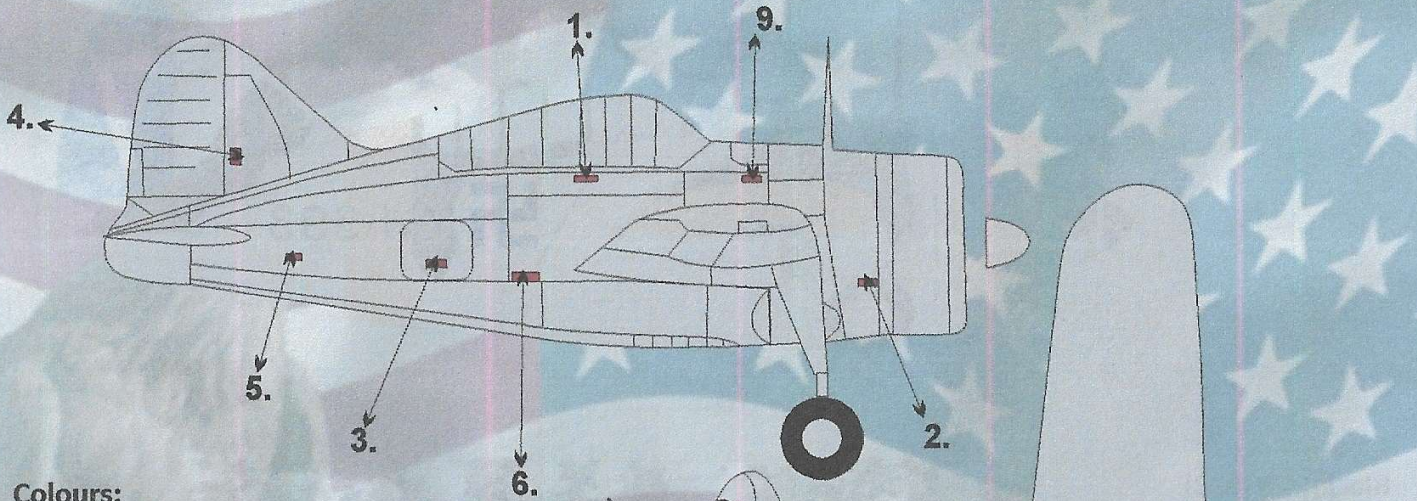


Colours:

- Dark Green (FS 24079)
- Dark Earth (FS 30118)
- Sky (FS 34424)
- Matt Black



Technical stencils



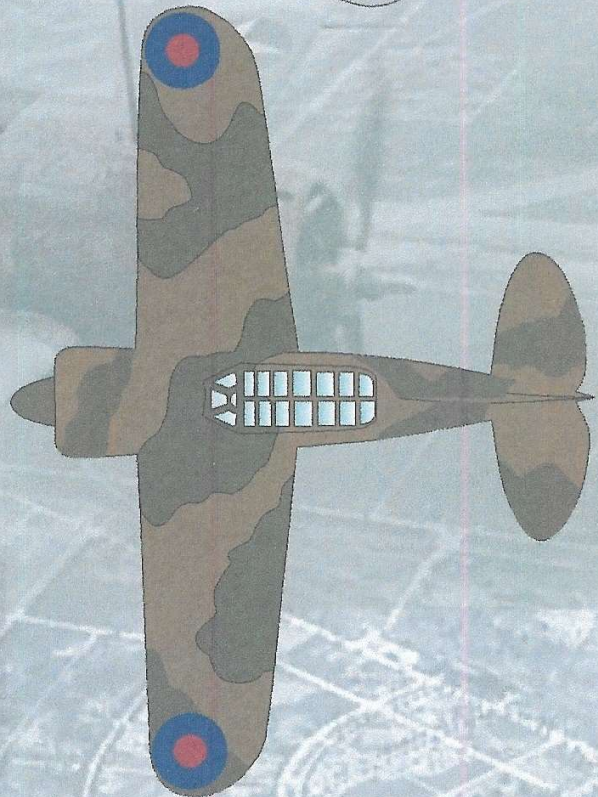
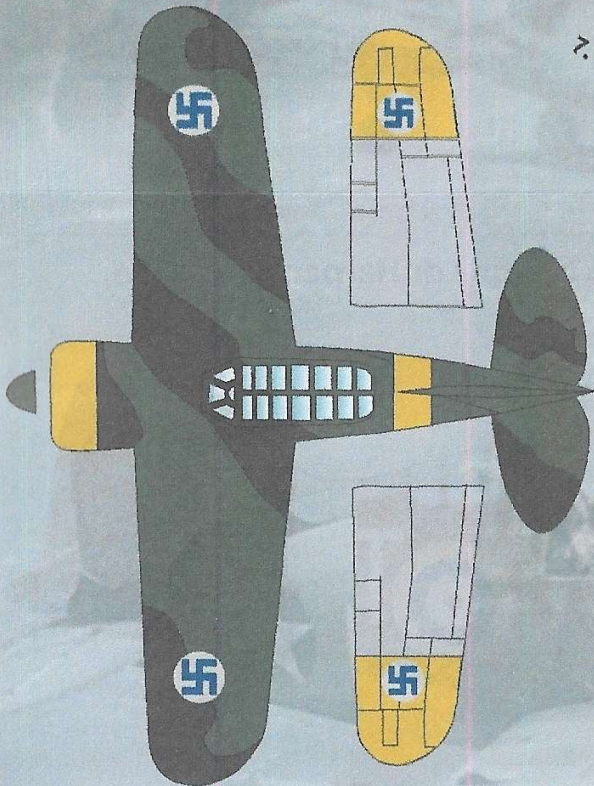
Colours:

Black (FS 37038)

Olive Green (34096)

Light Grey (FS 36440)

Yellow (FS 13655)



Colours:

Dark Green (FS 24079)

Dark Earth (FS 30118)