

USAF RC-121 C/D



The RC-121 was developed to provide airborne early warning radar for areas beyond the range of ground based radar installations. The United States Navy and Air Force operated the Warning Star/ EC121 (also RC-121) from 1952 to 1978 providing airborne radar for surveillance, intelligence gathering and command and control functions. The EC-121 was the predecessor to the now well-known AWACS E-3 Sentry.

The new Minicraft 1/144 scale RC-121 represents two United States Air Force versions of an early RC-121C & D from the 1950's. The kit includes 2 sets of US Air Force markings, radar domes and detailed landing gear.

The following markings are included in this kit:

USAF RC-121C, ca. 1955

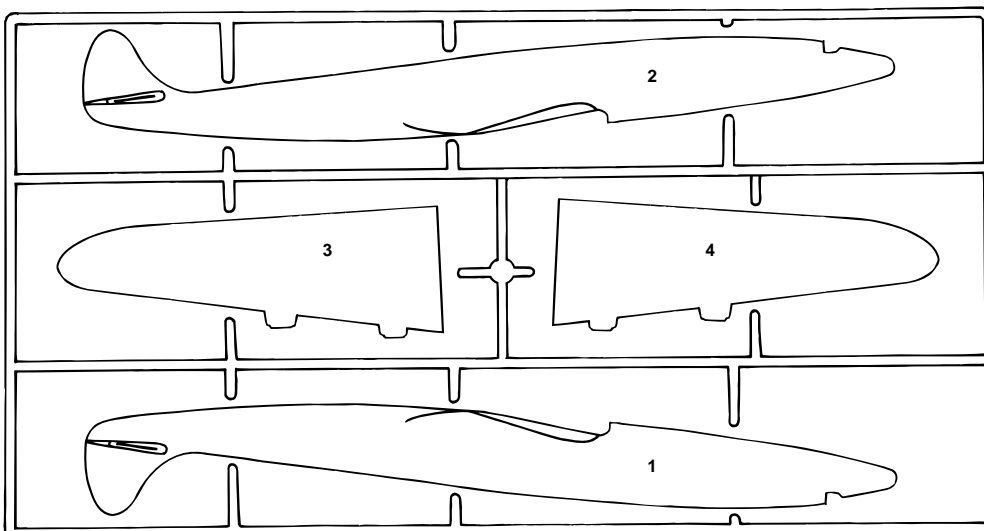
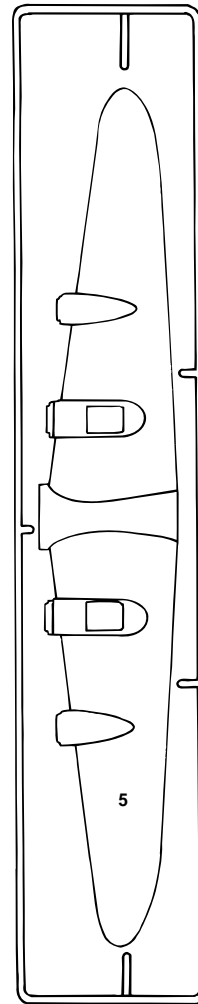
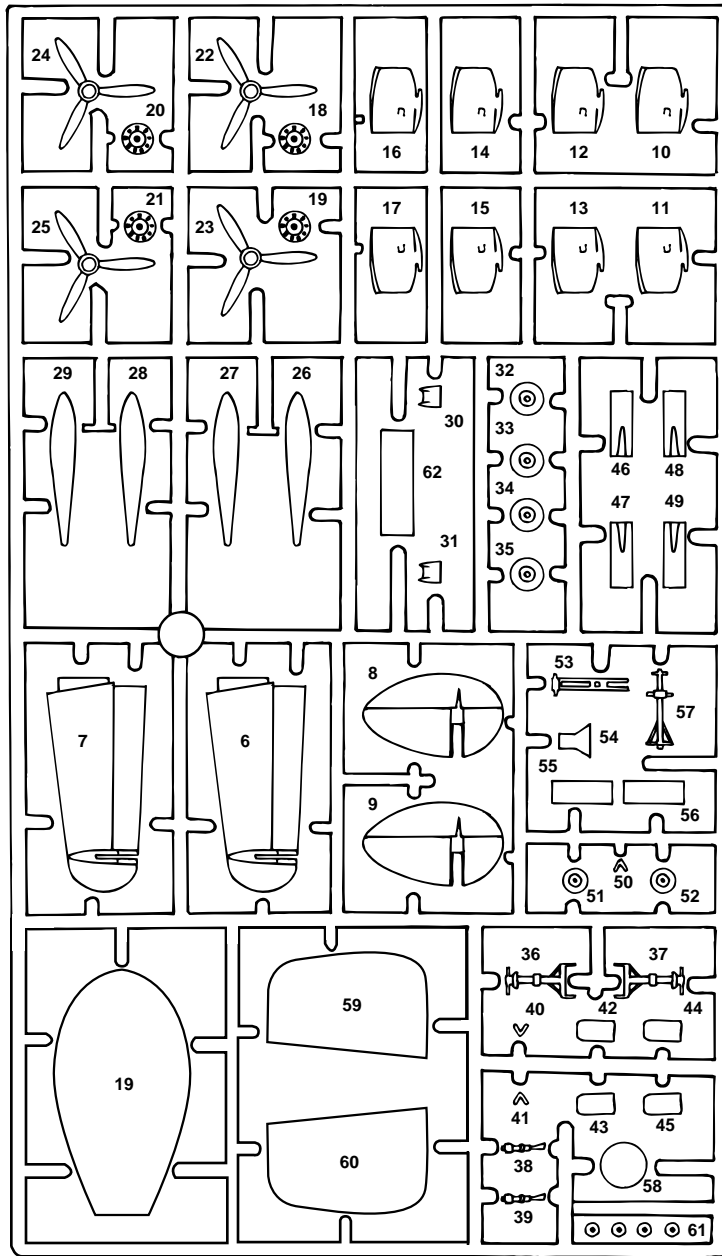
USAF RC-121D, late 1950's.

Minicraft Models, 1501 Commerce Drive, Elgin IL 60123 USA

www.minicraftmodels.com

Printed in China

PARTS LOCATING DIAGRAM



Note: not all parts are used on this kit.



Cement
Coller
Kleben
Pegar
Incollare
Colar
Kleven



DO NOT Cement
No pas Coller
Nicht Kleben
No Pegar
Non Incollare
Nao Colar
Niet Kleven



Cut away
Couper
Scheiden
Cortar
Tagliere
Cortar
Snijden



Optional parts
Choix
Auswahlmoglichkeit
Eleccion
Scelta
Opaco
Keuze



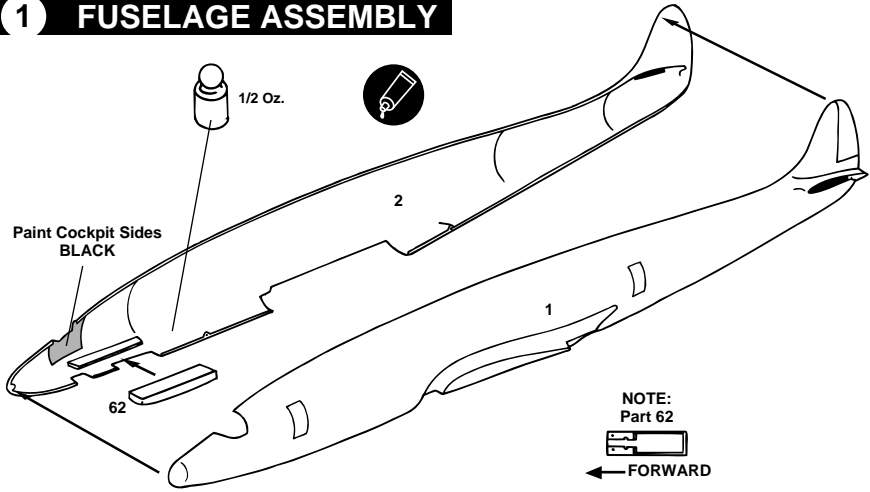
Repeat operation
R2peeter f opZration
Vorgang wiederholen
Repitir la operacion
Ripetere
Repitir a operacao
Herhalten

NOTE:

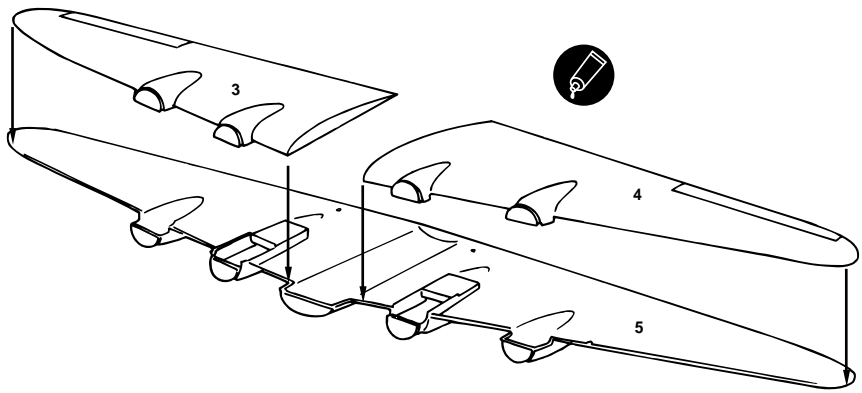
This model offers 2 building and marking options:
RC-121C does not use wing tip fuel tanks
RC-121D does use wing tip fuel tanks

See painting and decal placement guide at the back of this instruction sheet to decide which model you choose to build. It is best to decide which version you choose before painting.
Also note step 4 of the assembly instructions shows the choice of using or not using wingtip tanks to represent the RC-121C or RC-121D.

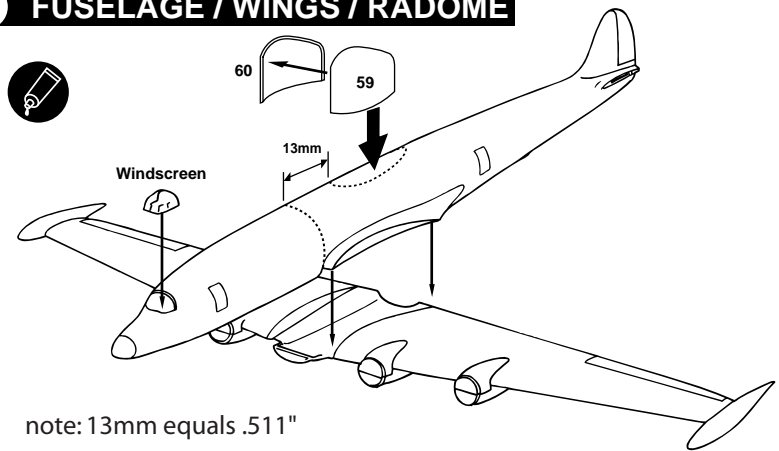
1 FUSELAGE ASSEMBLY



2 WINGS

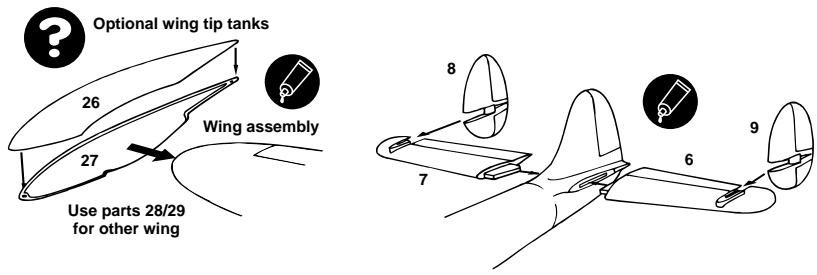


3 FUSELAGE / WINGS / RADOME

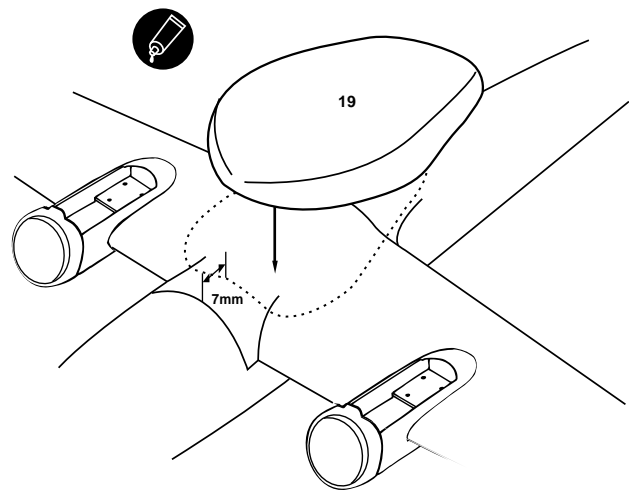


note: 13mm equals .511"

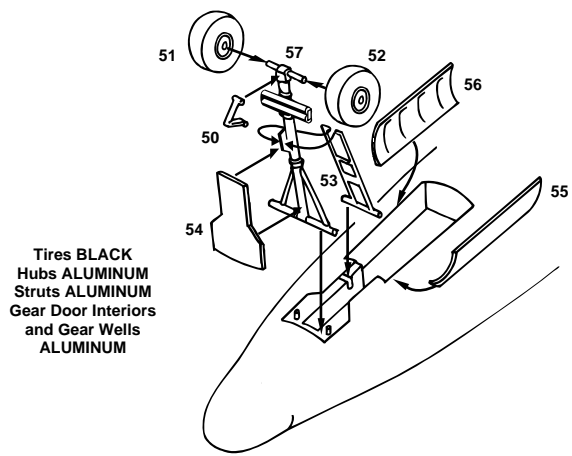
4 WING TIP TANKS / TAIL ASSEMBLY



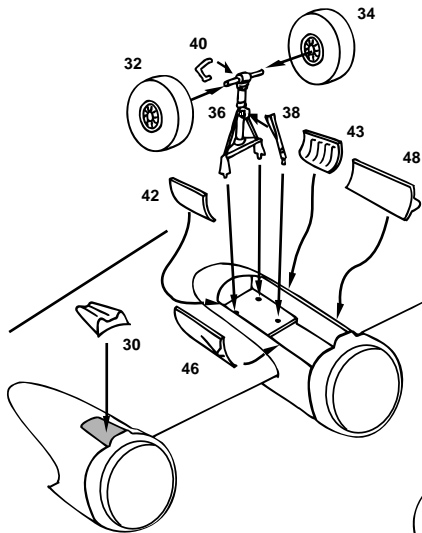
5 UNDERFUSELAGE RADOME



6 NOSE GEAR



7 MAIN LANDING GEAR

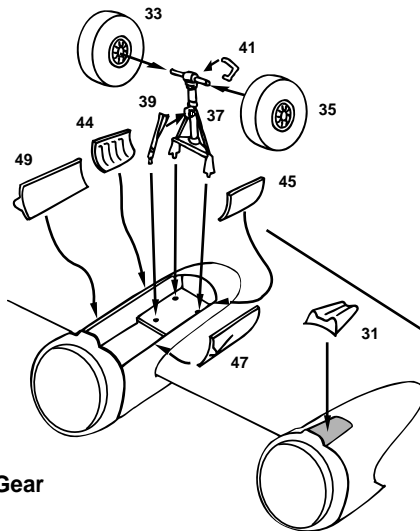


Port (Left) Main Gear

Tires BLACK
Hubs ALUMINUM
Struts ALUMINUM
Gear Door Interiors
and Gear Wells
ALUMINUM

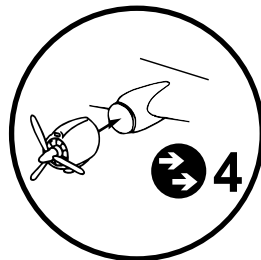
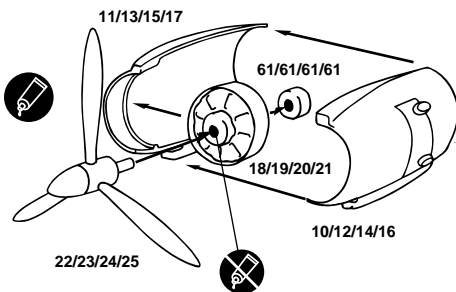


Tires BLACK
Hubs ALUMINUM
Struts ALUMINUM
Gear Door Interiors
and Gear Wells
ALUMINUM



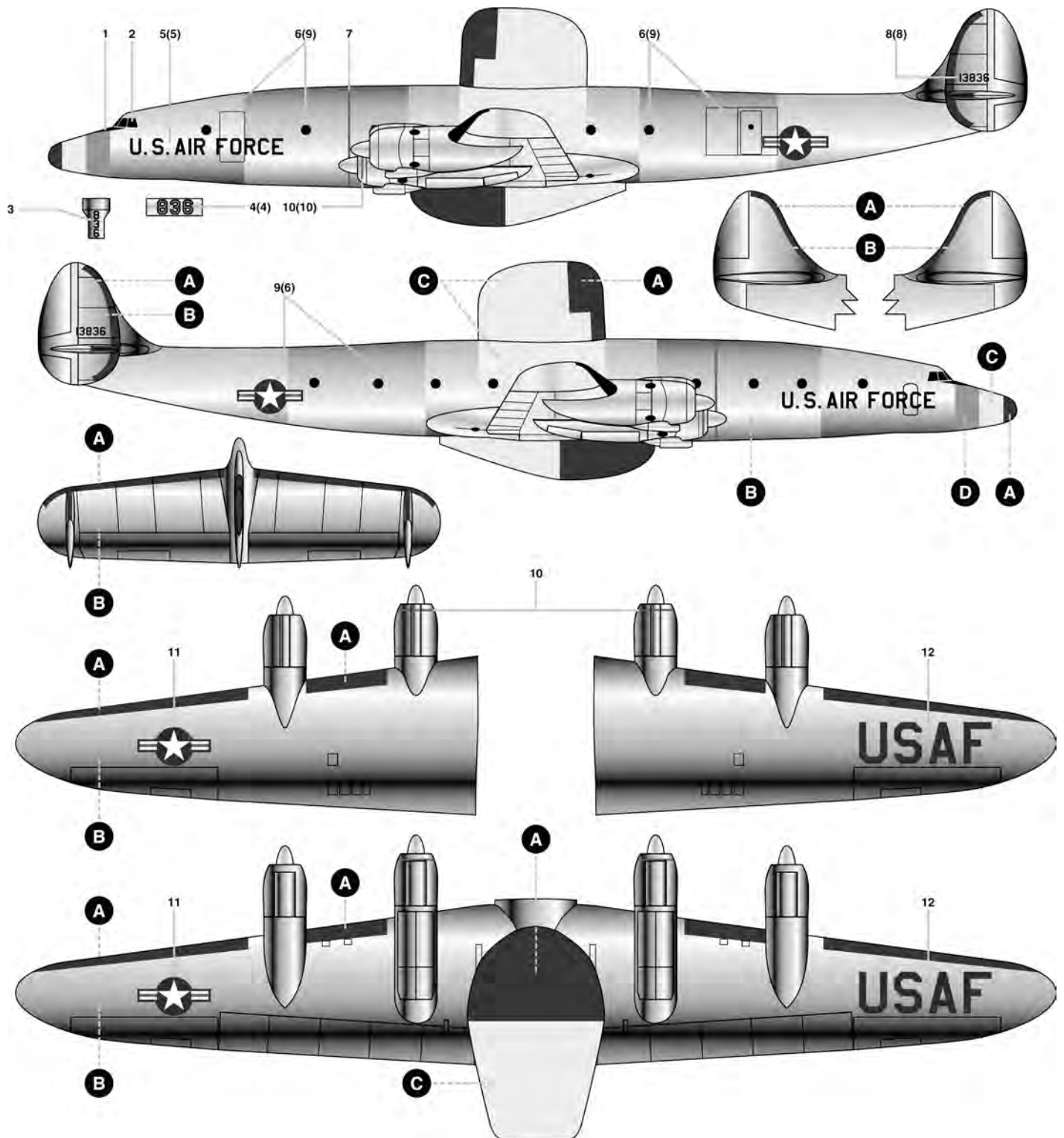
Starboard (Right) Main Gear

8 POWERPLANTS



Cylinders STEEL Gearbox GRAY Magnetos BLACK
Cowling Interior ALUMINUM Propeller Hub ALUMINUM Propeller Blades FLAT BLACK

USAF RC-121C, ca. 1955



PAINTS

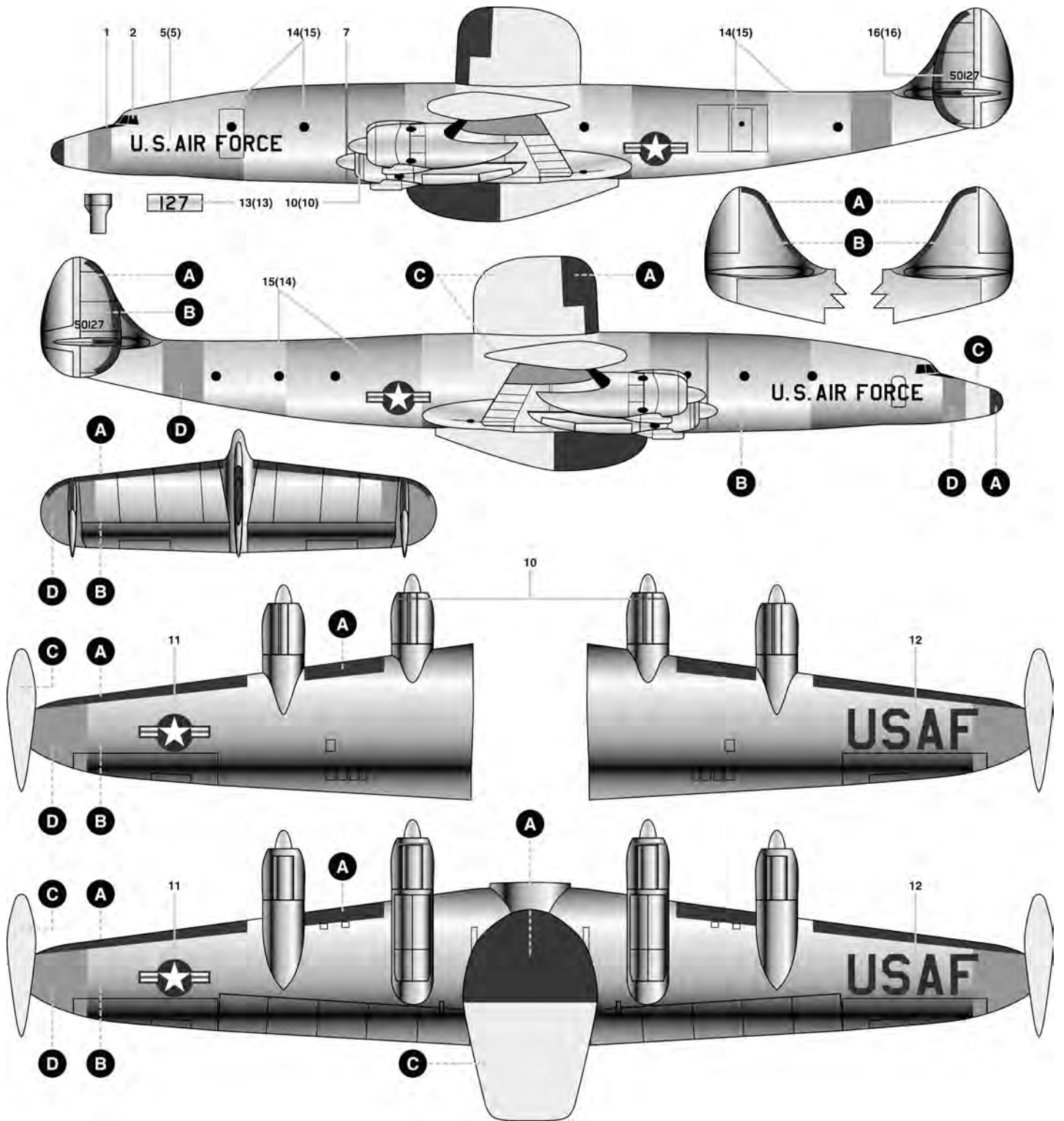
A Black (ModelMaster 1749, Acryl 4768)

B Aluminum (ModelMaster 1781, Acryl 4677)

C FS16473 Aircraft Gray (ModelMaster 1731, Acryl 4693)

D FS12197 International Orange (ModelMaster 2022, Acryl 4682)

USAF RC-121D, late 1950's



Your Minicraft model includes high-quality waterslide decals. These decals adhere best to a glossy surface; and it is recommended that you apply a clear gloss coat over your painted model.

Use a sharp scissors or knife to cut individual decals from the carrier sheet. Do not cut into the clear film surrounding the individual decals.

* It is recommended that you apply one decal at a time.

* Place the decal section in warm water, when first inserted in the water your decal will curl, after approximately ten seconds the decal will uncurl. Remove from water and lay on a paper towel. After approximately 10 - 20 seconds the decal will slide freely from the backing paper. Use a small brush to help slide the decal from the backing paper and into position on the model. Carefully blot excess water from the decal, using care not to move the decal or tear it.

* If you choose to use a setting solution, apply a thin coat over the decal following the manufacturer's instruction.

* Allow the decal to dry overnight. Wash any adhesive residue off the model with a small amount of clean water and dry thoroughly.

* Apply clear gloss, matte or flat coat to seal decals following the instructions from the manufacturer.



Legends in the making™

Visit our Website-
www.minicraftmodels.com

Minicraft Models
1501 Commerce Drive
Elgin, IL 60123

Phone: 847-429-9676