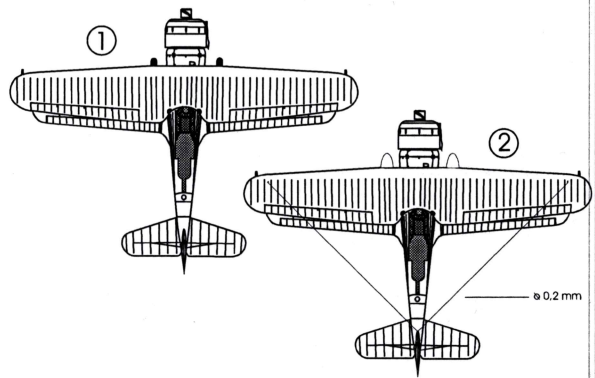


Colour

- A** Black
- B** White
- C** Light Grey
- D** Aluminium
- E** Leather
- F** Red Brown
- G** Bronze
- H** Sea Grey



AZmodel
Plastic kits

FOKKER C X

Over Finland, Winter ski

PLASTIC MODEL

AZ 7237 AZ 7249

SCALE : 1/72

The Fokker C.X was a biplane scout and light bomber designed in 1933. It had a crew of two (a pilot and an observer). It was originally designed for the Royal Dutch East Indies Army, in order to replace the Fokker C.V. Like all Fokker aircraft in that period, it was of mixed construction, with wooden wings and a welded frame covered with aluminium plates at the front of the aircraft and with linen at the back. The prototype was built in 1934 with a Rolls-Royce Kestrel V engine. Two C.Xs were delivered to the Spanish Republic, and four more to Finland. The Finnish also license-produced 35 C.Xs until 1942. These C.Xs were equipped with Bristol Pegasus XII engines. The Finnish C.Xs served with distinction in the Winter War, the Continuation War and the Lapland War. The last of the 7 Finnish C.Xs that survived the war crashed in 1958. The craft, designated FK-111, served as a target-towing craft in the Finnish Air Force. The plane crashed into a forest January 21, 1958, killing the pilot (2nd Lt Aimo Allinen) and the winch-operator (2nd Lt Antti Kukkonen).

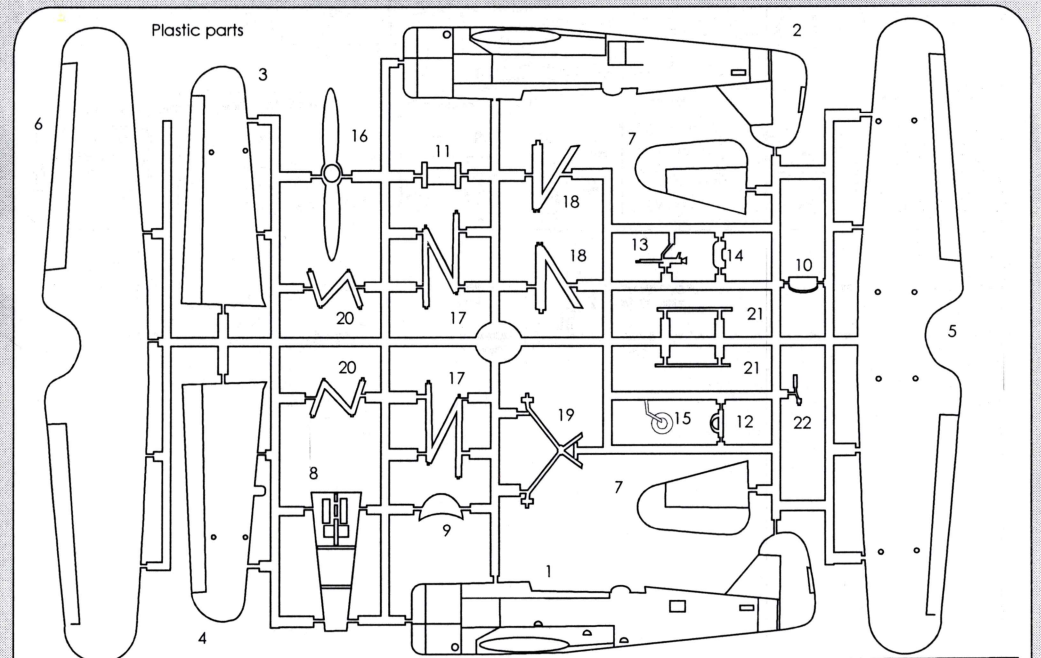
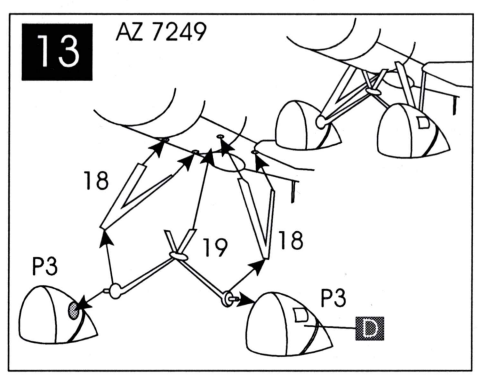
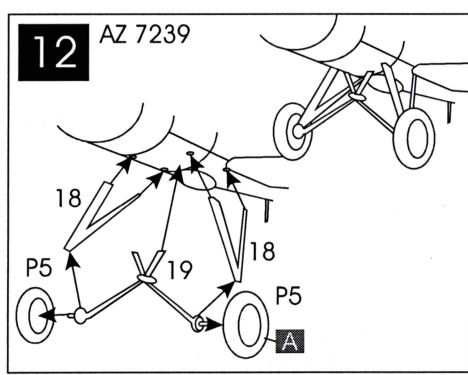
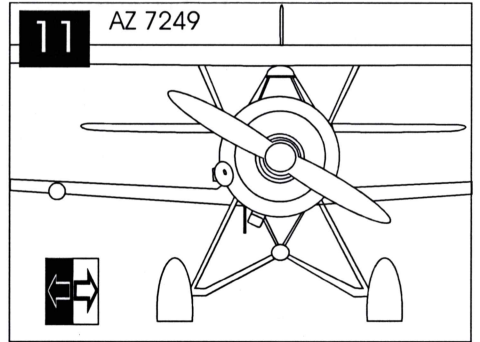
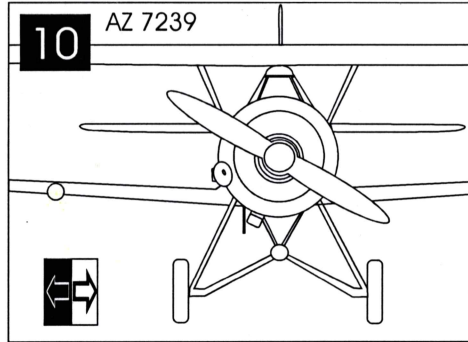
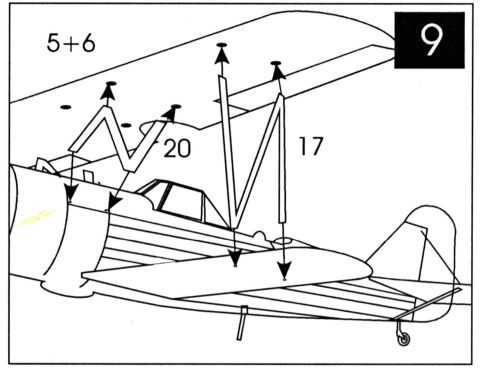
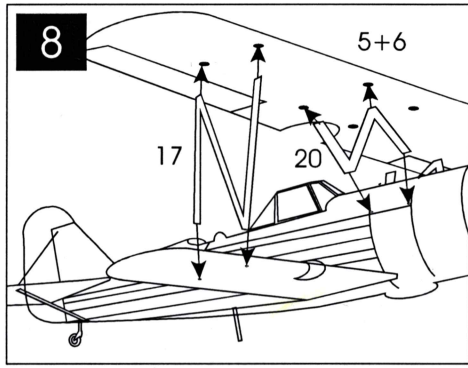
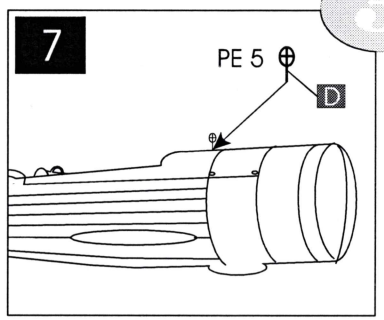
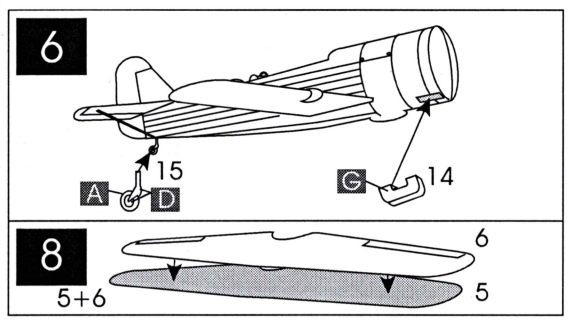
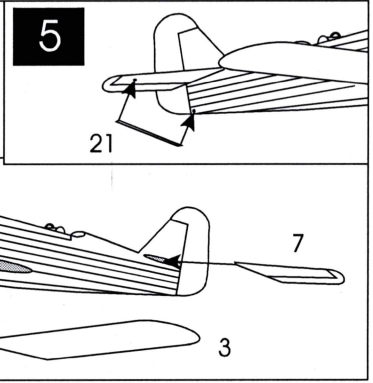
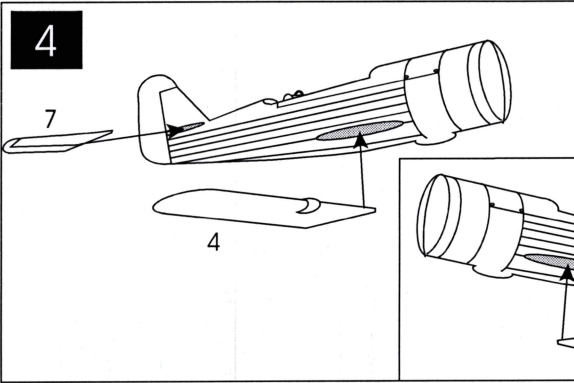
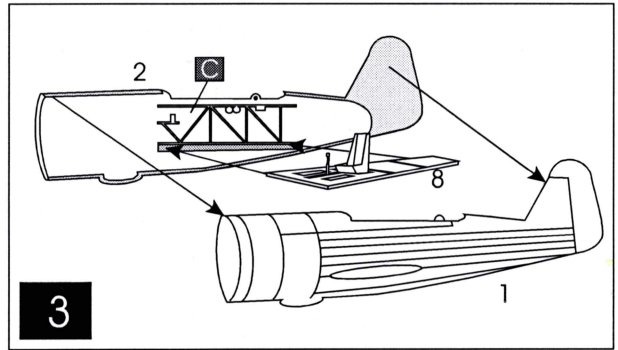
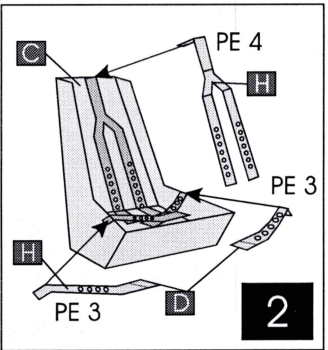
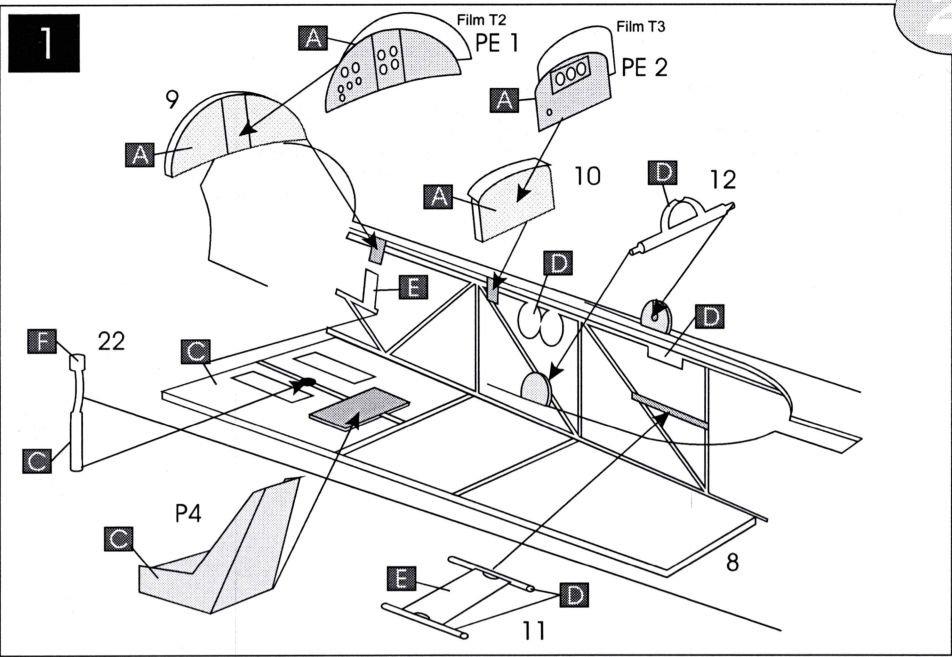


Photo-Etched part	PUR parts AZ 7239	PUR parts AZ 7249	Decals	Transparent part
	P1 P2 P3 P4	P1 P2 P5 P4		T1
			AZ 7237	AZ 7249

	OPTIONAL VOLBA		BEND OHNOUT		OPEN HOLE VYVRTAT OTVOR		SYMMETRICAL ASSEMBLY SYMETRICKÁ MONTÁŽ		A NOTH ŽÁREZ		REMOVE ODRÍZNOUT
--	-------------------	--	----------------	--	----------------------------	--	---	--	-----------------	--	---------------------

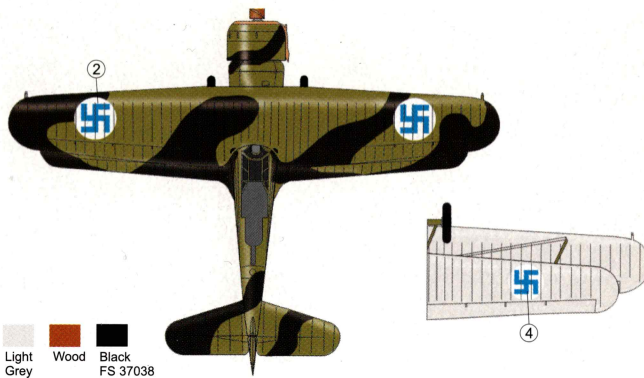
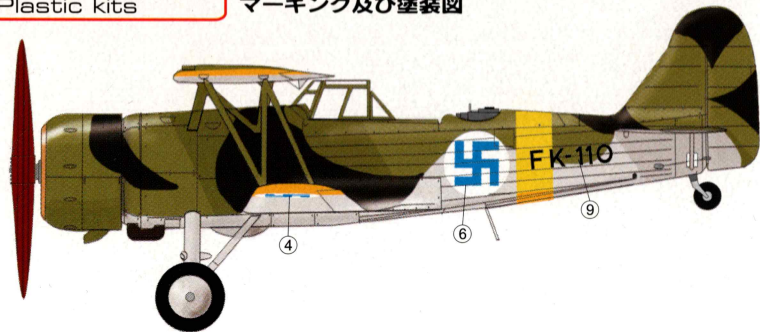


AZmodel
Plastic kits

Marking & Painting

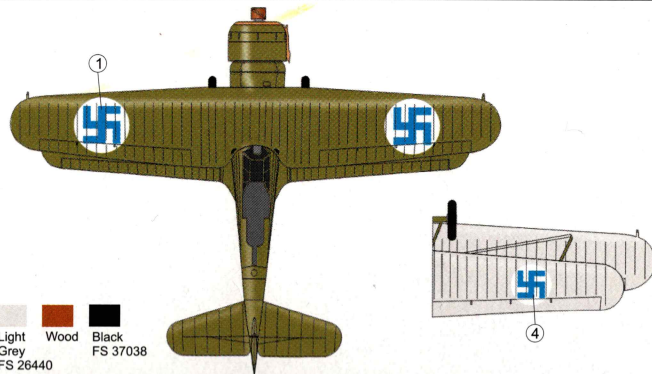
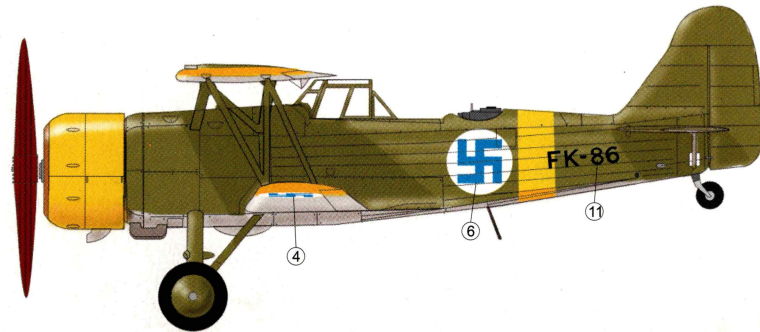
マーキング及び塗装図

1



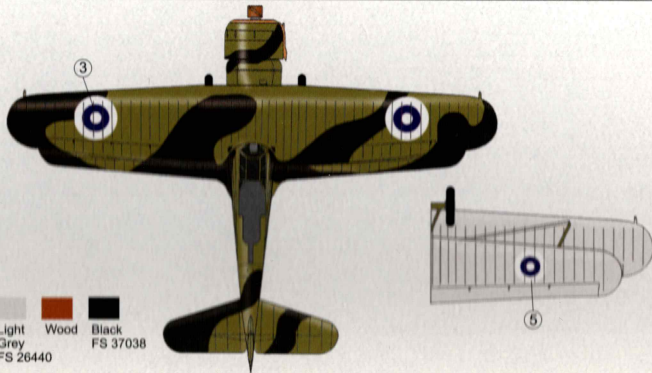
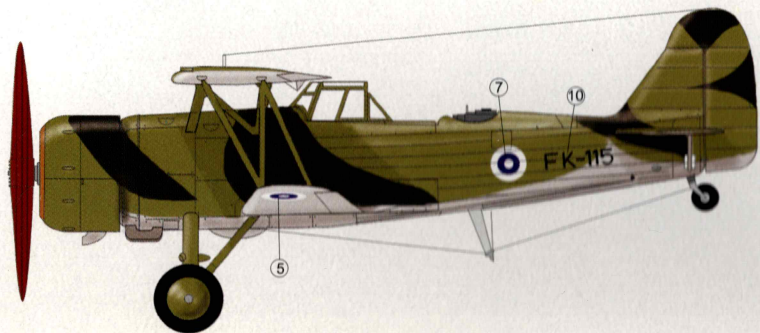
Yellow Fin.Olive Green FS 24096 Light Grey FS 26440 Wood Black FS 37038

2

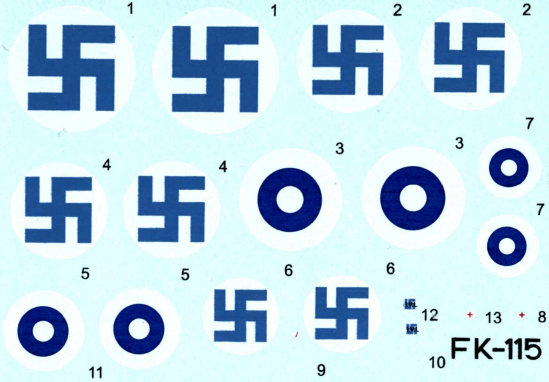


Yellow Fin.Olive Green FS 24096 Light Grey FS 26440 Wood Black FS 37038



3



Fin.Olive Green FS 24096 Light Grey FS 26440 Wood Black FS 37038



AZ Models Fokker C X Fin

 12 + 13 + 8
 10 **FK-115**

FK-86 FK-86 FK-110 FK-110 FK-115