



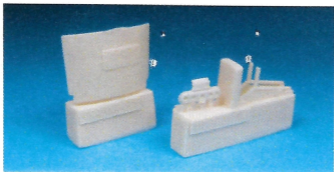
## BR48082 Lockheed F-104 Dragchute Housing

Designed for 1/48th Hasgawa F-104 family. May be adapted to fit all other Starfighter kits.

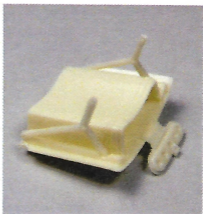
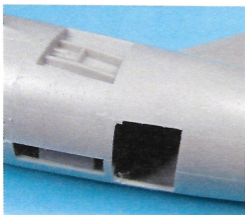
This set contains a deployed and empty dragchute housing, complete with actuators and dragchute compartment flap.

- 1) Cut open drag chute housing door from bottom of kit fuselage halves. Tape fuselage halves together and clean up opening with files. Box in well with sheet styrene if desired. It won't be very visible once installed.
- 2) Begin by carefully sawing dragchute housing from molding block. Saw carefully from both sides, being careful not to cut into the rear wall. Test fit to model and adjust if necessary.
- 3) Carefully score actuators and flap to remove. Cleanup with files and sandpaper. Attach door & actuators as shown with Cyanoacrylate (super glue).
- 3) Paint housing and actuators according to reference photo.
- 4) Install finished housing during final assembly with CA. Enjoy!

Happy modelling!



Master Patterns by Milt Poulos



A larger version of these instructions can be downloaded from the product page at:

[www.barracudacals.com](http://www.barracudacals.com)