

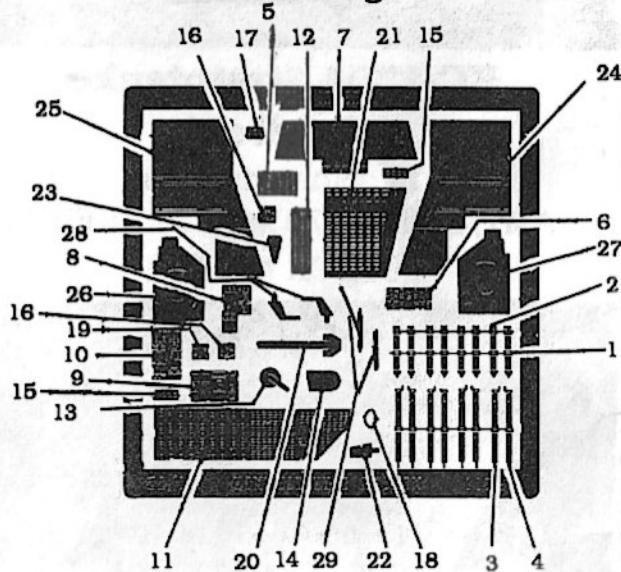
**1/72  
Scale**

**KC-135A Stratotanker  
detail set**

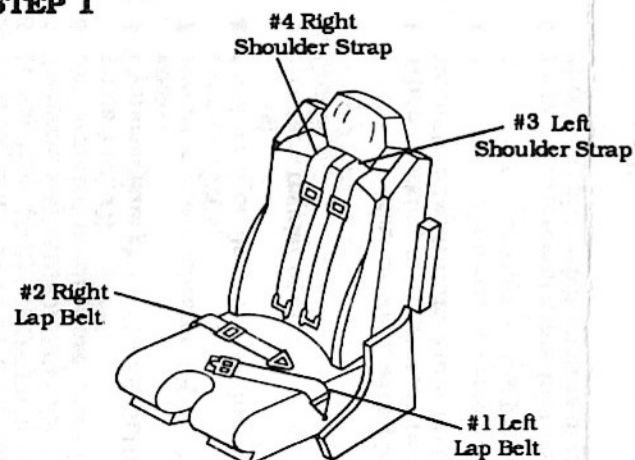
Recommended for  
AMT/ERIL 1/72 scale KC-135A kit  
STOCK # 25011



### Parts diagram

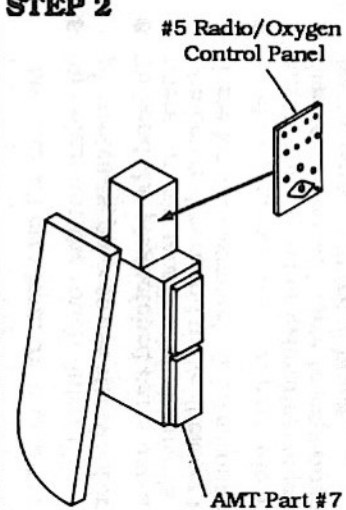


### STEP 1



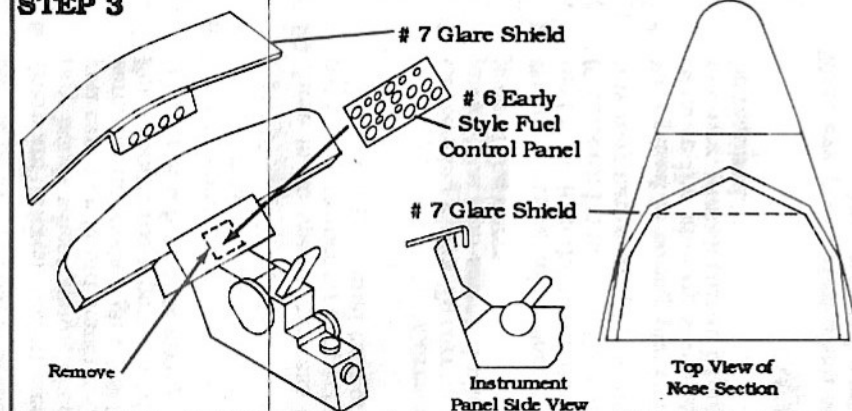
Glue the left lap belt (Part #1) and right lap belt (Part #2) in place on the seat sides, and fold them over onto the cushion. Pass the plain end of the left shoulder strap (Part #3) and right shoulder strap (Part #4) under the head rest and glue to the seat backs. Fold the straps down onto the back rest. Repeat this step for all 4 seats.

### STEP 2



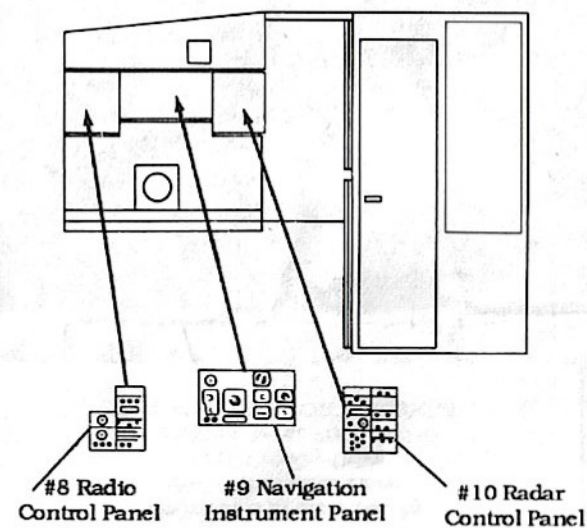
Glue the instructor pilot's radio/oxygen control panel (Part #5) in place on kit part #7.

### STEP 3



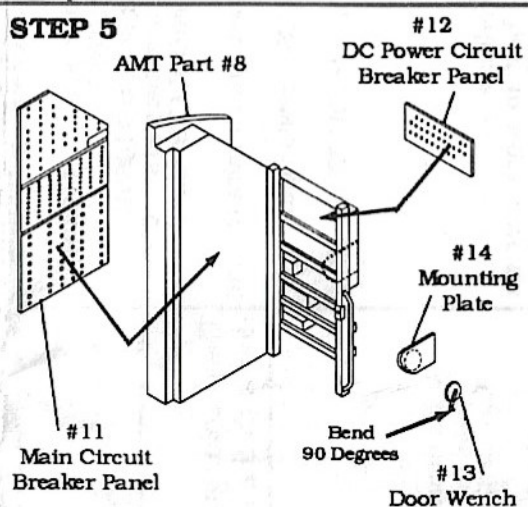
In the mid '80s, the fuel control panel was upgraded to a small digital display system and the pilot's radar scope was mounted on the open space left over. We have included the old style panel to be used for the earlier versions. If it is used, remove the radar scope and glue the fuel control panel (Part #6) in place. On the instrument panel glare shield (Part #7) fold the engine fire extinguisher control panel down 90 degrees. Bend the part to match the curve of the instrument panel. After the fuselage is glued together, glue the glare shield in place. Refer to the insert above for alignment.

### STEP 4



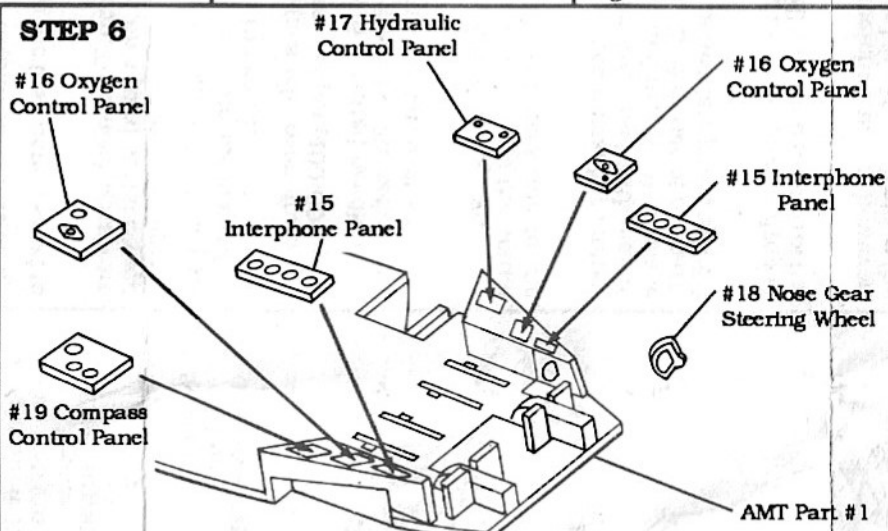
Glue the Navigator's radio control panel (Part #8), navigation instrument panel (Part #9), and radar control panel (Part #10) in place on kit part #5.

### STEP 5



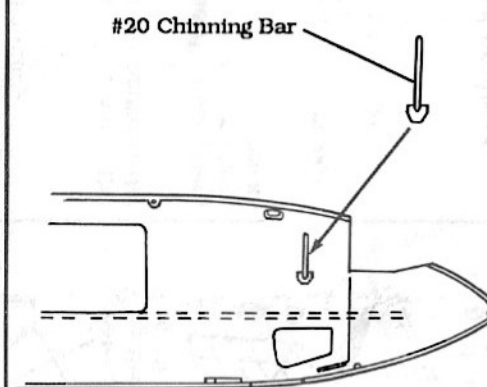
Glue the main circuit breaker panel (Part #11), and DC power circuit breaker panel (Part #12) in place on kit part #8. Glue the crew entry door wench (Part #13) to the mounting plate (Part #14). Bend the tip of the wench crank 90 degrees to form a handle. Glue this assembly in place on kit part #8. See insert for alignment.

### STEP 6



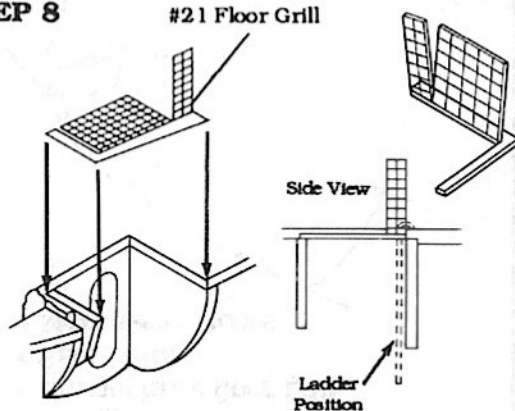
On kit part #1, glue the pilot's interphone panel (Part #15), oxygen control panel (Part #16), hydraulic control panel (Part #17), and the nose gear steering wheel (Part #18) in place on the left side console. Glue the co-pilot's interphone panel (Part #15), oxygen control panel (Part #16), and compass control panel (Part #19) in place on the right side console. **NOTE:** Over the years, these control panels were moved around on the side consoles. Refer to your reference photos for the exact placement of these parts.

### STEP 7



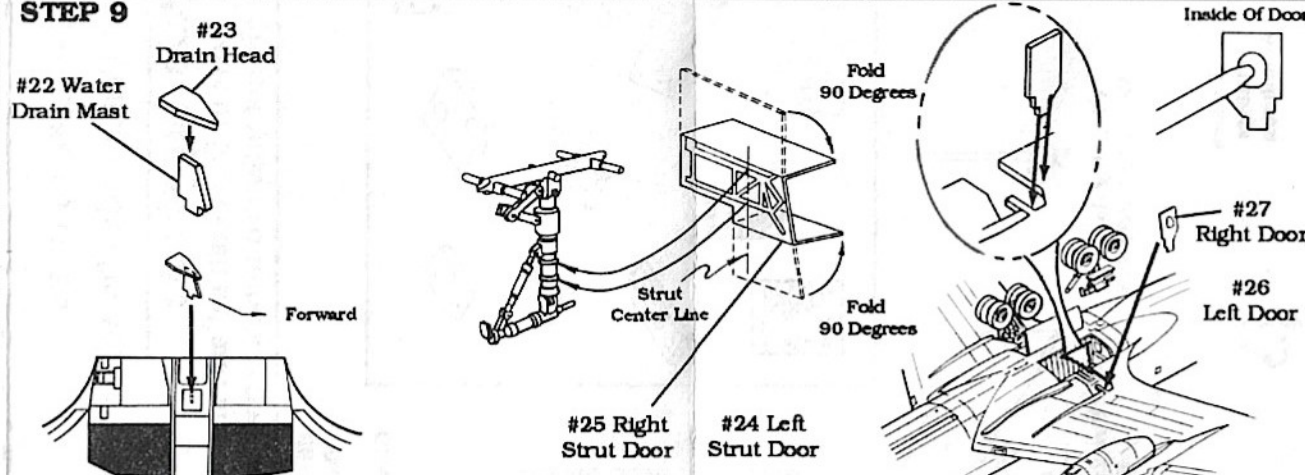
Glue the Chinning bar (Part #20) in place on the left fuselage side. It should be centered above the crew entry door opening with the base just above the bottom edge of the side window. See the insert above for alignment.

### STEP 8



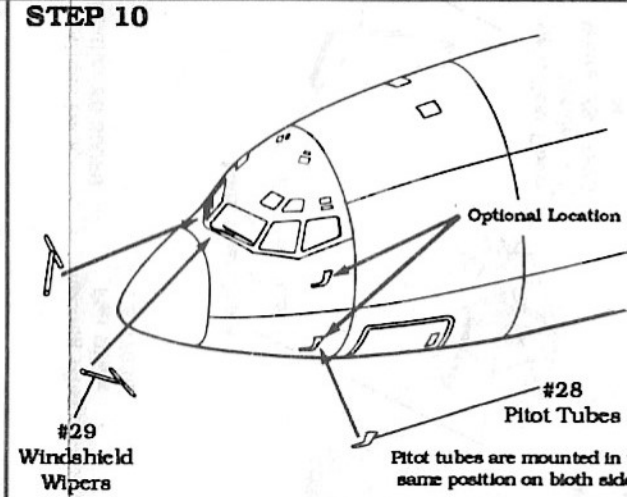
If your model is to be built with the crew entry door open and the ladder in place, you will have to separate the floor grill (Part #21) by cutting on the guide line at the aft end of the grill. Fold this small section up 90 degrees. After kit part #10 is glued to the floor, glue the grill in place. Should you want to have the grill displayed in the open position, make a 2nd cut on the guide line at the front end and bend both sections up 90 degrees. **NOTE:** The crew entry ladder should be attached to the aft wall of the entry chute, not the side wall as shown in the kit instructions.

### STEP 9



This completes the pre-assembly of the detail parts. Complete your model up to step 12. At this point add the external detail parts. Glue the water drain mast (Part #22) in place on the center line of the fuselage behind the main wheels in the center of the small square panel (see insert). Glue the drain head (Part #23) to the mast. Replace the main gear strut doors #127 & #128 with the 4 brass doors. Fold the left strut door (Part #24) and the right strut door (Part #25) to match the drawings with the raised detail to the outside (see insert). Glue these parts to the struts after they are installed. Use the rounded end of a paintbrush that is about the same size as a ball point pen and push the small bulges out on the small strut doors. Glue the left door (Part #26) and the right door (part #27) directly to the wings.

### STEP 10



The pitot tubes were installed in two locations. Additionally, the windshield wiper system was not installed until the late '60s. The drawings above will indicate where these items were installed. Confirm the actual location of the pitot tubes (Part #28) and the use of windshield wipers (Part #29) with your own references and glue in place. Complete the construction of your model.



### Tools recommended

- 1 Photoetch scissors (SQUADRON PRODUCTS micro scissors #10401)
- 2 Files (SQUADRON PRODUCTS needle file set #10701)
- 3 Hobby knife (SQUADRON PRODUCTS modeling scalpel #10601)
- 4 Tweezers (SQUADRON PRODUCTS blunt end micro tweezers #10306)
- 5 Non-serrated needle nose pliers (SQUADRON PRODUCTS round nose pliers #10102)
- 6 Cyanoacrylate glue ("SUPER GLUE"), liquid cement and 5-minute clear epoxy.
- 7 Precision glue applicator, (SQUADRON PRODUCTS Precision glue applicators #10204)
- 8 Steel wool or fine grit sandpaper, (SQUADRON PRODUCTS Sanding sticks)
- 9 Low tack regular or double sided tape
- 10 Candle

### How to work with photoetched products

- 1 When working with photoetched parts, it is best to work over an uncluttered white surface area and in a wide open area without carpeting.
- 2 Match your photoetch sheet with the drawing on the instruction sheet to familiarize yourself with the part numbers.
- 3 Remove parts one at a time in order not to lose them. To remove parts from sheet, use photoetch scissors or place the sheet on a hard surface such as a sheet of plexiglass, and cut the parts loose with a hobby knife.
- 4 To clean the part once it has been removed from the sheet, hold the part in a pair of non-serrated needle nose pliers and use a steel file to sand off the flash left over from the attachment point to the sheet.
- 5 To polish out the rough finish that is sometimes left over from the photoetching process use steel wool or fine grit sandpaper (400-600 grit).
- 6 To bend the photoetched parts use a pair of non-serrated needle nose pliers, or for smaller bends use a pair of tweezers. To soften the photoetched part and make it easier to bend, run the part over a candle flame for approximately 5-10 seconds.
- 7 To shape the photoetched part into a round or curved shape, wrap the part around a rod or cylindrical object that is about one half the actual diameter. You will have to experiment with different sizes due to the spring back qualities of brass.
- 8 There are different techniques for gluing photoetched parts. For temporary bonds where photoetched parts come in direct contact with plastic you can use liquid cement. Once the part is glued into position place some cyanoacrylate glue ("SUPER GLUE") around the edge of the part. For stronger more permanent bonds use a cyanoacrylate glue ("SUPER GLUE") or a 5-minute epoxy.
- 9 For precision gluing, use Squadron precision glue applicator. A drop of cyanoacrylate glue on the tip of the applicator will allow you to control the placement of the glue.
- 10 There is no special process for painting photoetched parts; however, painting a primer on the parts once they are glued in place will aid in the adhesion of your final coat of paint and enhance the details.

### Correcting mistakes

- 1 **Correcting kinks:** To correct a kink, place the bent (kinked) part into the jaws of flat non-serrated pliers, and compress the part in between the jaws of the pliers.
- 2 **Wrong bend or fold:** Place the jaws of non-serrated needle nose pliers next to or into the bend and fold the part back in the proper direction. **(Caution):** Do not fold the part back and forth more than three times as this may cause the part to break.
- 3 **Part glued in wrong place:** Take a hobby knife and pry the part loose. Remove the glue by sanding, scraping, or soaking the part in a glue remover. **(Note):** Due to being pried off, some reshaping of the part may be required.

### WARNING

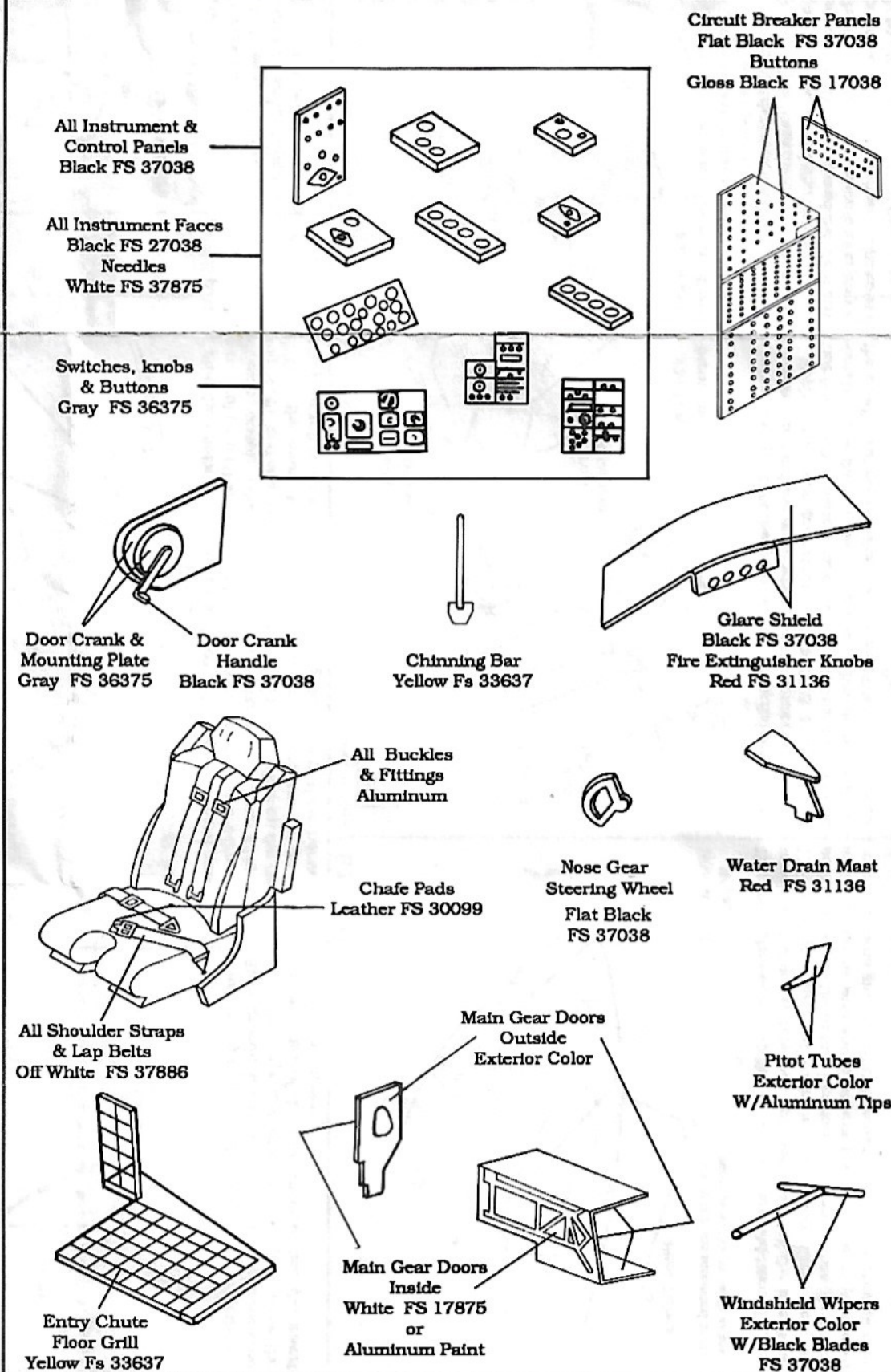
**Wear eye protection when working with photoetched products.  
Photoetched parts may have sharp edges.**

## REFERENCE BOOKS

SQUADRON/SIGNAL PUBLICATIONS "IN ACTION" SERIES

## Painting Guide

These color guides are for the parts in this detail set and are used in conjunction with the kit guides. They are not intended to be a replacement for them.

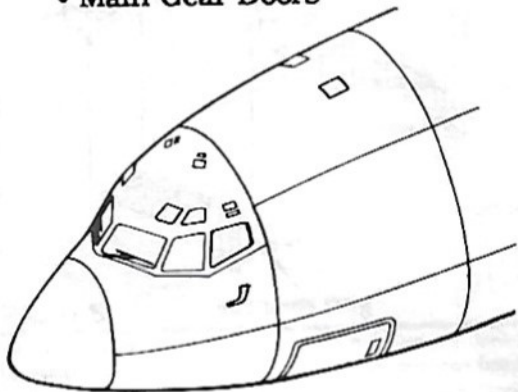




# Turn your model into a **True Detail** masterpiece

Brass photoetched parts including:

- Instrument panel detail
- Pilots side consoles details
- Navigator console details
- Entry chute floor grill
- Seat belts
- Main Gear Doors



Distributed in the U.S.A. by  
MMD "The Plastic Place"  
1115 Crowley Drive  
Carrollton, Texas 75011-5010  
**NOT SUITABLE FOR CHILDREN**  
Made in USA