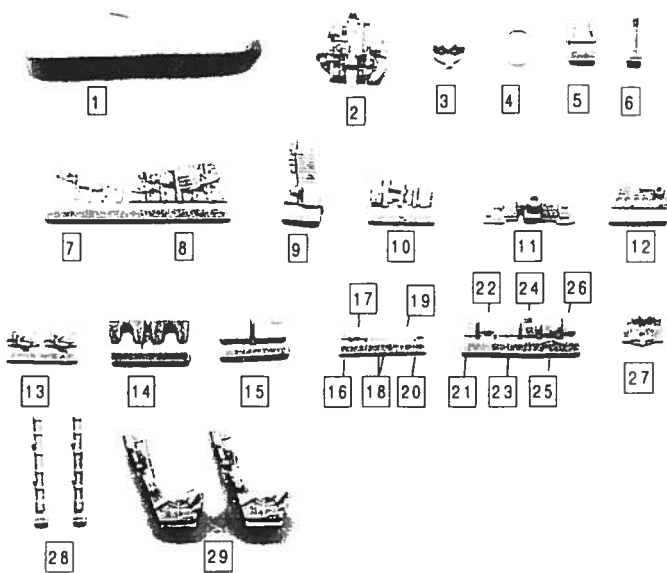




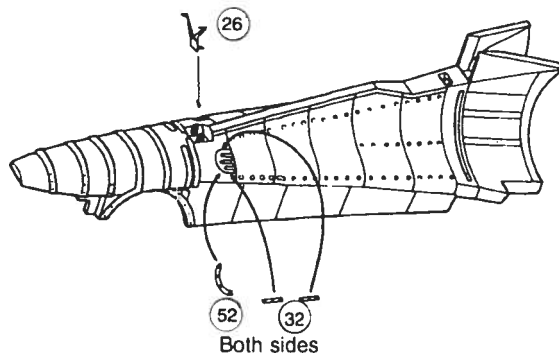
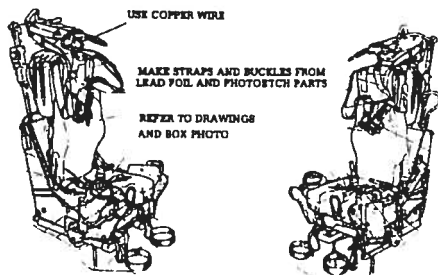
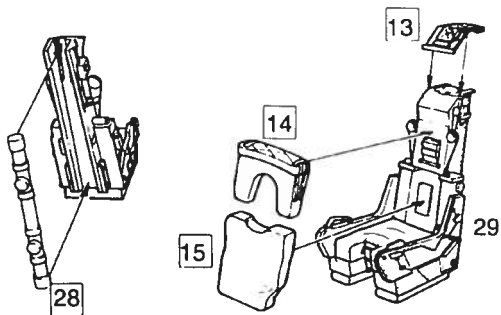
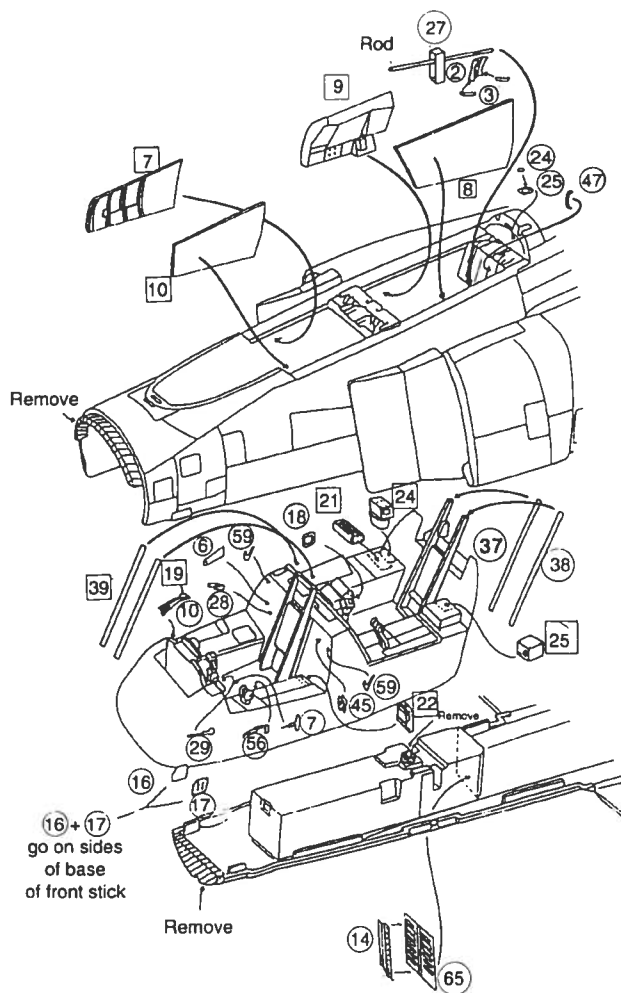
VERLINDEN PRODUCTIONS

811 Lone Star Drive
O'Fallon MO 63366

N°1406
F-4D Phantom II (for Tamiya)
1:32 Scale



- Indicates Photo-etched part
- Indicates Resin part



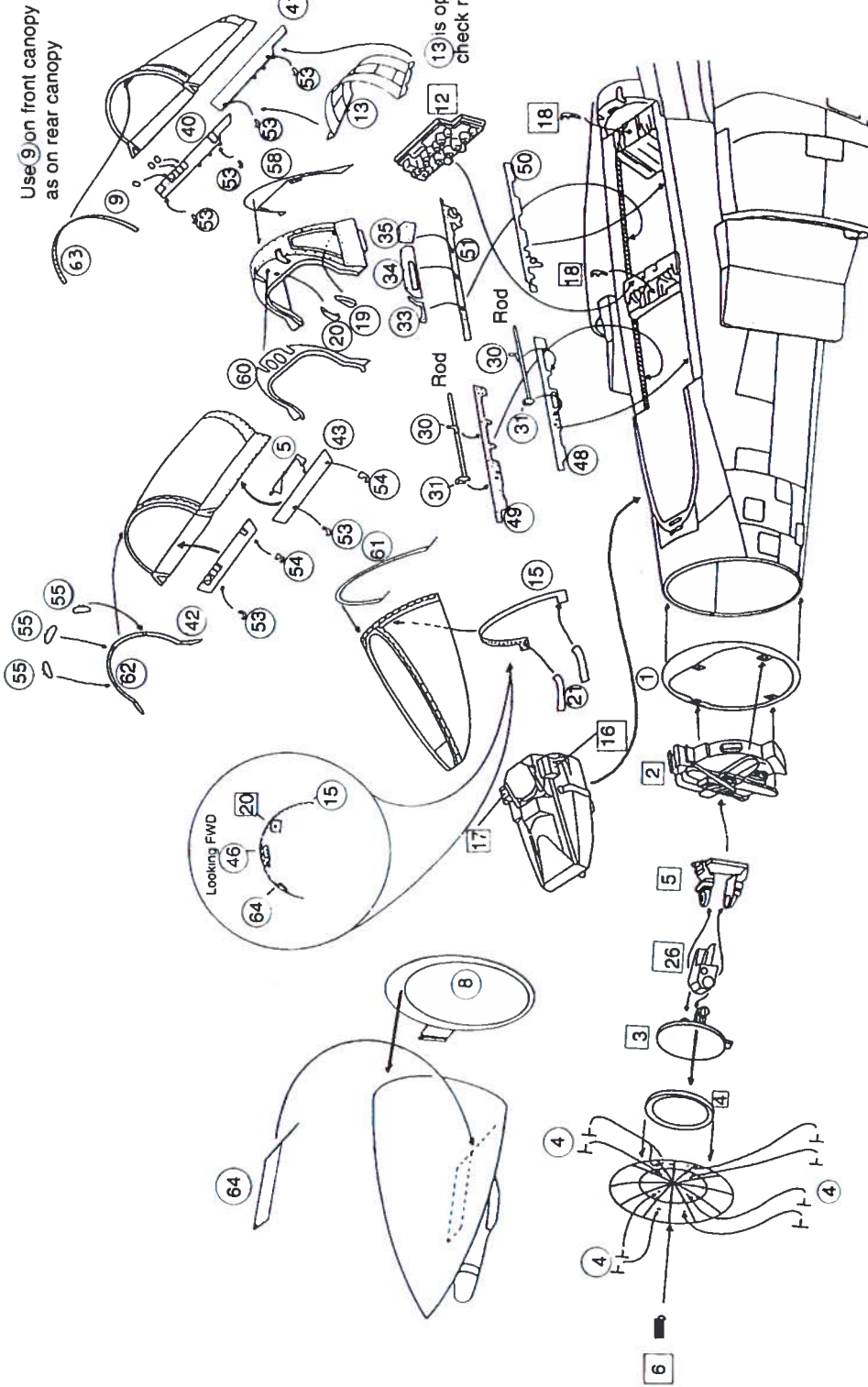
Parts (2) and (4) are formation light strips, early F-4D's did not feature these items, so check your references before adding them to your kit.

Parts (36) are pads for the stores sway braces

Parts (22) and (23) are for the fuel dump on the trailing edge of the main wings. Either style can be used.

Parts (6) are static dischargers. The configuration varied from aircraft to aircraft. Many aircraft did not feature these items, so check your references before adding them to your kit.

On the upper fuselage of the Tamiya kit, on the right side of the rear cockpit their are substantial raised areas which must be removed in order to utilize this VP cockpit tub. All other raised detail on the inside cockpit sidewalls does not need be removed, as the VP sidewalls simply fit right over it.



RECOMMENDED REFERENCES :

VP Lock On No.8 : F-4E Phantom II

World Air Power Journal McDonnell F-4 Phantom Splirt in the Skies

Detail & Scale Vol.43 F-4C, F-4D, RF-4C Phantom II

Aerofax Miniagraph 4, Mcdonnell F-4D