
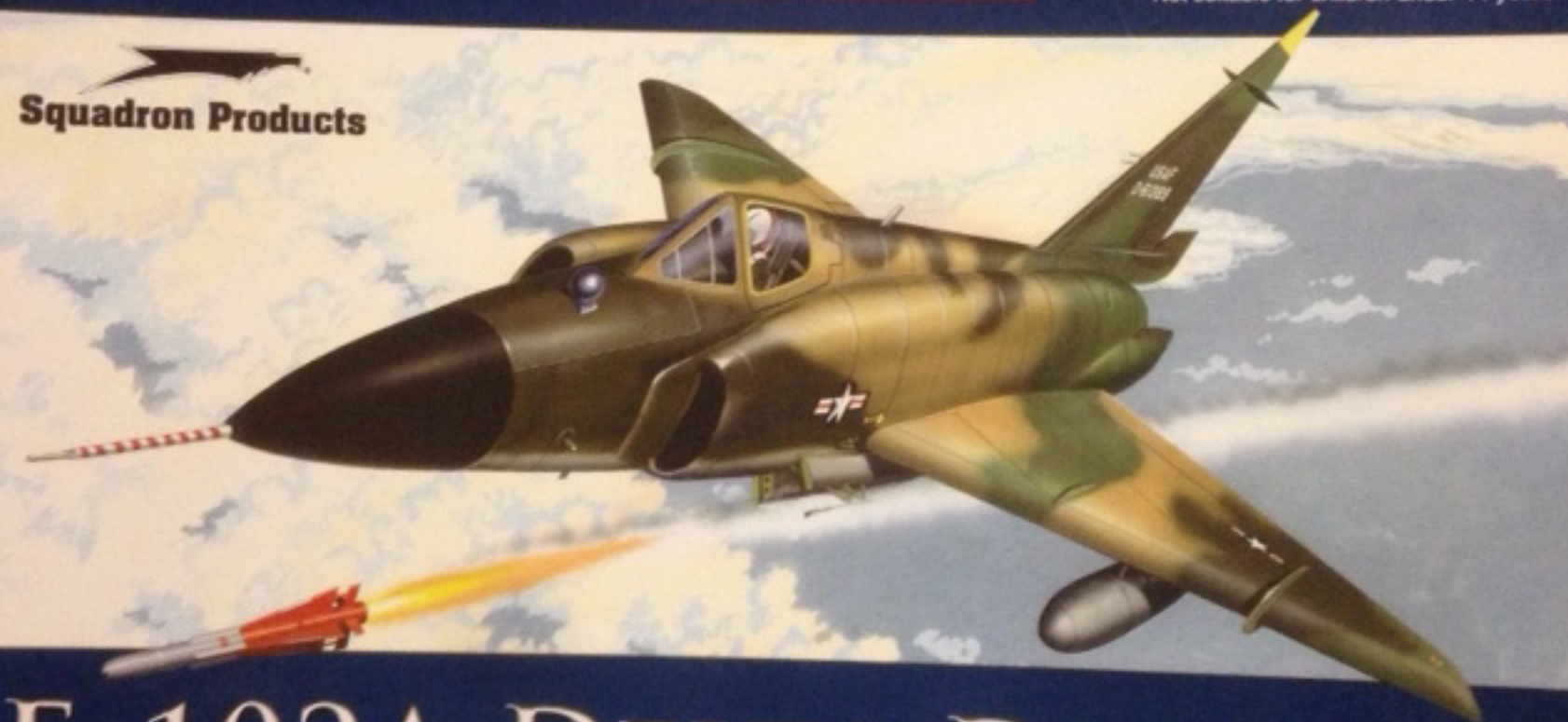


ENCORE *E* MODELS

1:48 SCALE

Detailed scale model for adult enthusiasts.
Not suitable for children under 14 years.


Squadron Products



F-102A DELTA DAGGER

48001

ENCORE  MODELS

1:48 Scale

F-102A DELTA DAGGER



The Convair F-102 was a futuristic aircraft when it first reached the United States Air Force's Air Defense Command squadrons during the mid 1950s. Its rakish angular and wedge-shaped protrusions coupled with its wickedly slender fuselage gave the fighter a purposeful rocket-like appearance that seemed ideal for an aircraft intended to race high into the skies to deal destruction to marauding Communist bombers. Officially the 'Delta Dagger,' but more commonly and affectionately dubbed the 'Deuce'; the F-102 was the first operational all-weather supersonic interceptor and delta-wing fighter of the USAF. Still, the F-102 had a difficult start – initial prototypes were incapable of breaking the sound barrier due to the then not fully appreciated 'area rule.' Convair undertook a major redesign of the original straight-sided fuselage that resulted in the now classic narrow-waisted or 'Coke Bottle' configuration, which reduced transonic drag enough to impart Mach speeds to the Deuce. During the heady days of the F-102's gestation, the concept of an interceptor was rewrought. The type was believed beyond primitive guns and instead was armed with infrared and semi-active radar homing air-to-air missiles stored in a three-segment internal weapons bay. Even the bay doors became weapons stations with internal launch tubes for unguided folding-fin rockets. Later modifications allowed this load to include nuclear-tipped missile variants as well.

As is typical of most military systems, the F-102 was continually updated and improved. One of the most visually compelling and significant upgrades was the improved Case XX wing which increased the camber of the outer wing and required enlarged elevons. Built into production aircraft from serial number 56-1317, this enhancement increased the Deuce's overall ceiling and Mach ceiling, improved maneuverability and improved low-speed handling. Your model features this latter Case XX wing.

The Delta Dagger served well and in significant numbers with both Air Force and Air National Guard units well into the 1970s. This included deployment in Vietnam, where the Deuce flew fighter patrols, provided bomber escort and, with limited success, took part in air-to-ground action. During the late 1960s, F-102s were supplied to NATO allies, serving Turkey's Türk Hava Kuvvetleri and Greece's Hellenic Air Force. Many F-102s would end their days as PQM-102 target drones. As a legacy, the improved F-102B 'ultimate' interceptor would enter production as the F-106 Delta Dart.

The F-102A was generally well liked by those who flew it, and for a time it formed the backbone of continental Air Defense Command. It remains an iconic design from the Cold War that still has the power to evoke an edgy era laced with nuclear fears, red stars, missiles, and Mach numbers.

Specifications

Wingspan.....38 ft 1 in
Length.....68 ft 4 in
Height.....21 ft 2 in
Wing Area.....695 ft² (Case XX Wing)
Empty Weight.....19,350 lb
Loaded Weight.....24,500 lb
Avionics.....MG-10 fire control system

Internal Fuel Capacity.....1,085 US gallons
External Fuel Capacity.....2 x 215 US gallon drop tanks
Powerplant - 1 x Pratt & Whitney J57-P-25 afterburning turbojet

Performance

Range.....1,350 miles
Speed Max.....Mach 1.25 at 40,000 ft
Ceiling.....53,400 ft

Armament

Rockets: 24 x 2.75 in FFAR unguided rockets in missile bay doors

Missiles: 6 x AIM-4 Falcon air-to-air missiles (2 per bay segment) further an AIM-26 Falcon with conventional or nuclear warhead could be accommodated in modified central bay).

ATTENTION - Read the instructions carefully prior to assembly. Remove parts from frame with a sharp knife or nippers and trim away excess plastic. Do not twist off sprues. Numbers of parts are marked figures: **1,2,3...**

Decals: Cut from the sheet as needed (numbers of decals are marked by figures in squares **1 2 3** ...); submerge in water until decal loosens from paper; apply the decal to the kit and blot with a clean rag.



* REPEAT MULTIPLE TIMES



* OPTIONAL PARTS



* DECAL



* CEMENT TOGETHER



* REMOVE AND DISCARD



* DO NOT CEMENT



* SYMETRICAL ASSEMBLY



* REMOVE



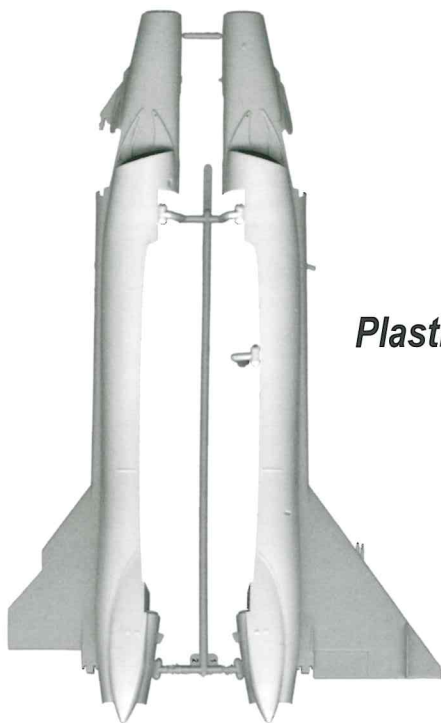
* GRIND



* BEND



* REPLACE



Plastic Parts

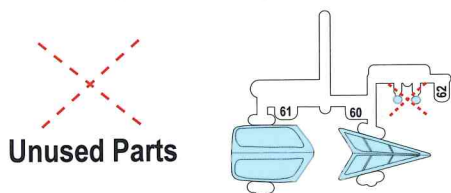
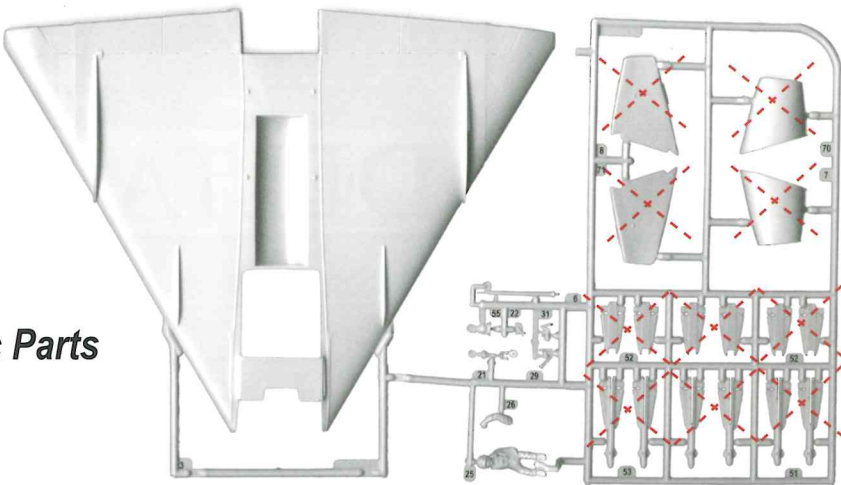
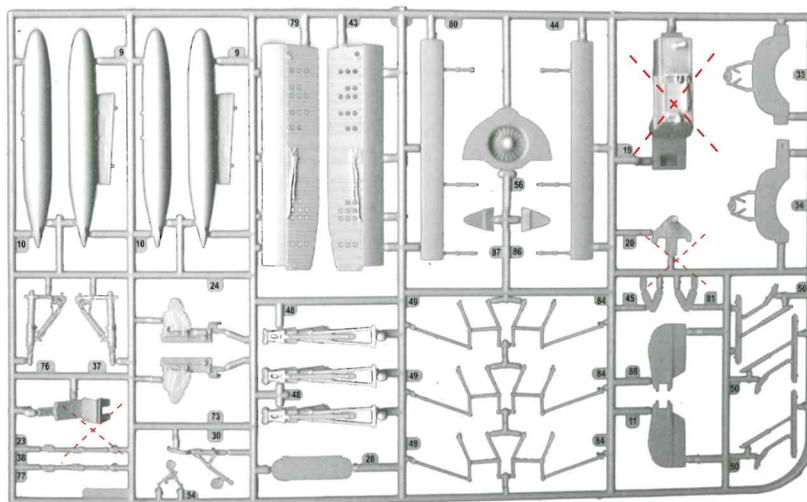
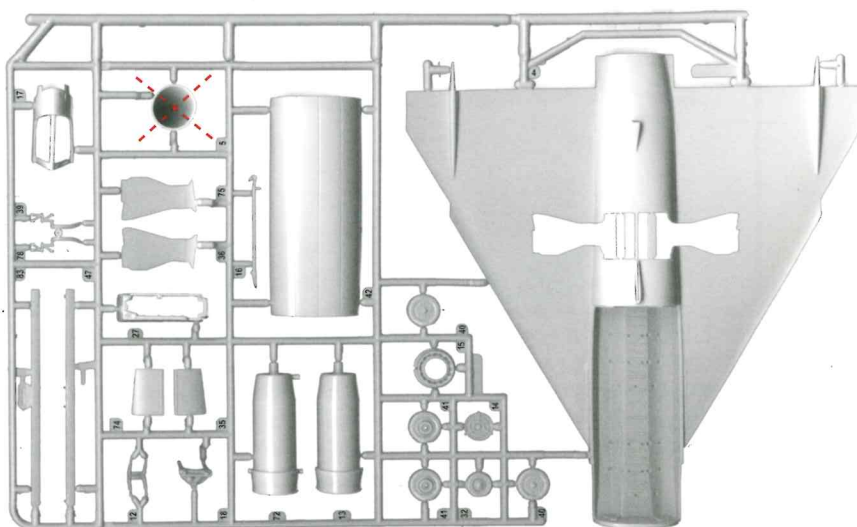
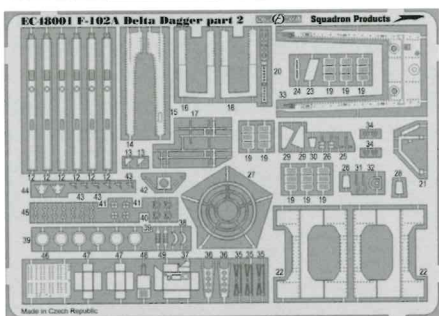
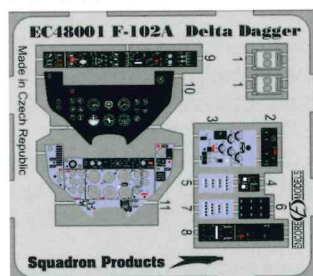
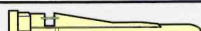


Photo-Etch



Resin Parts

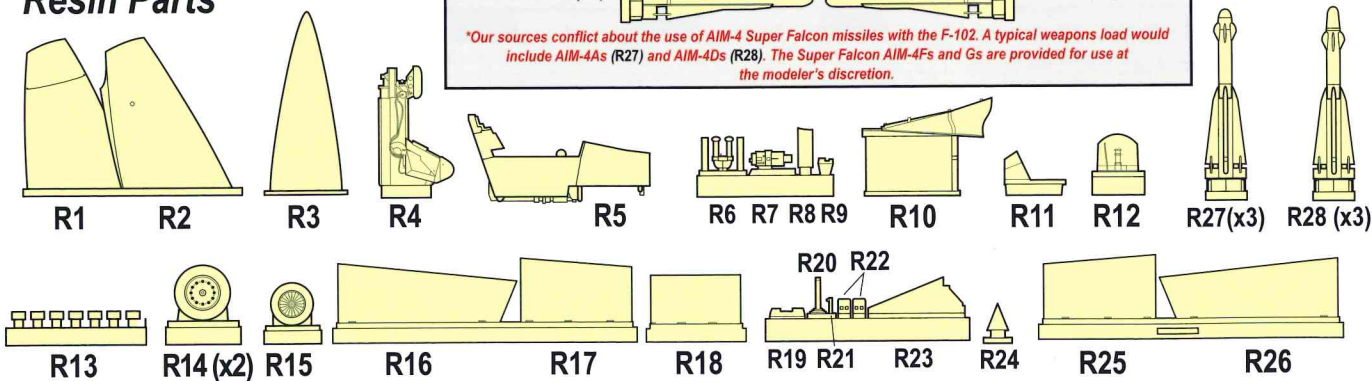
AIM-4F (x3)*

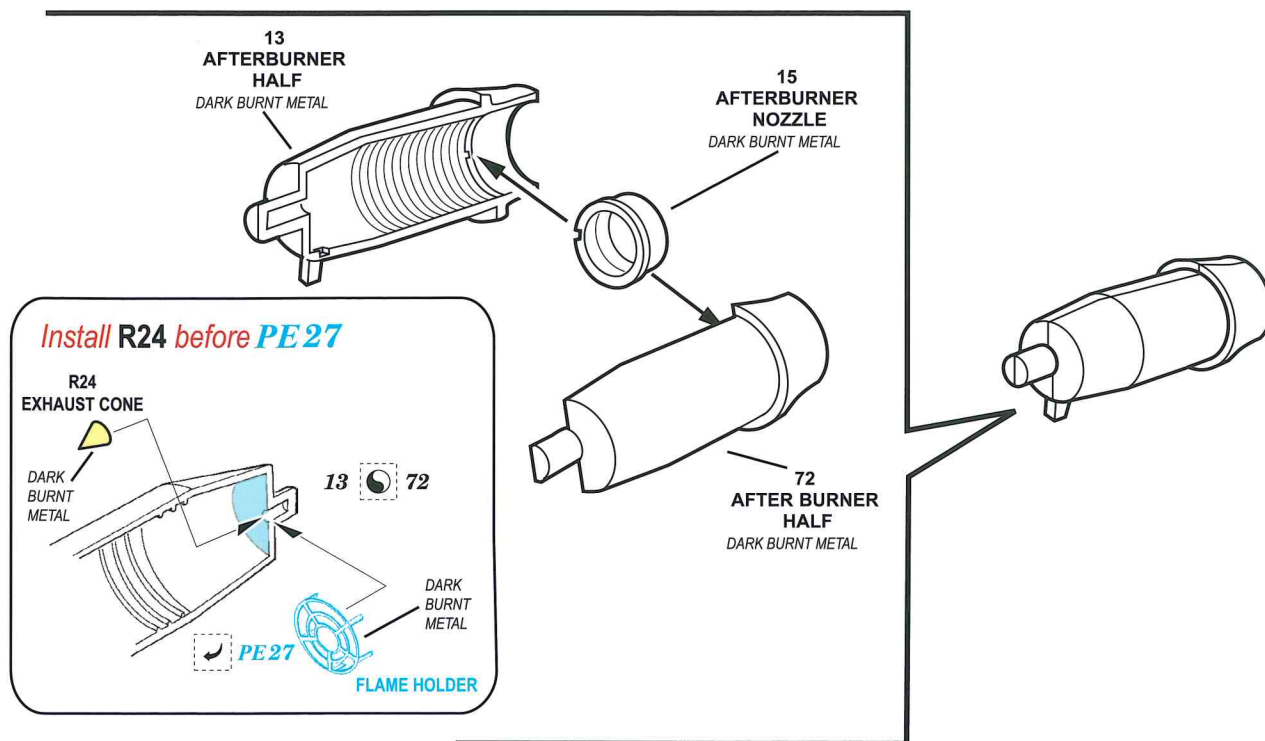


AIM-4G (x3)*

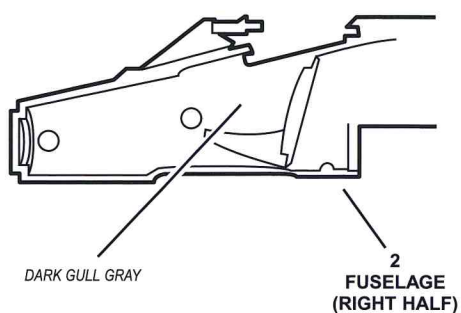


*Our sources conflict about the use of AIM-4 Super Falcon missiles with the F-102. A typical weapons load would include AIM-4As (R27) and AIM-4Ds (R28). The Super Falcon AIM-4Fs and Gs are provided for use at the modeler's discretion.

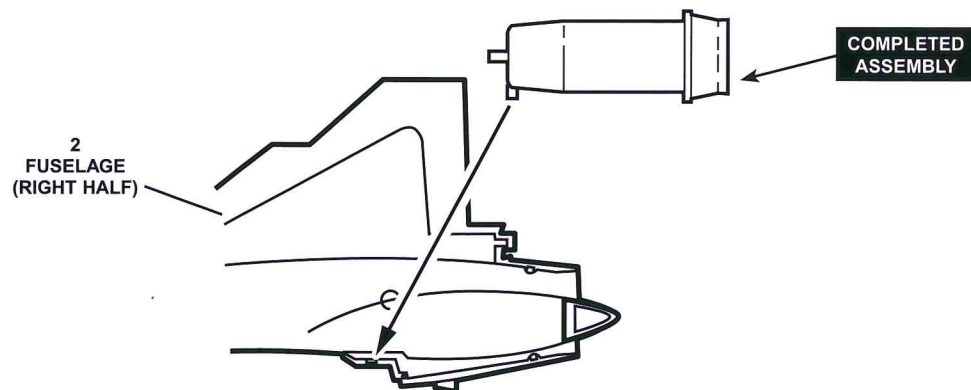
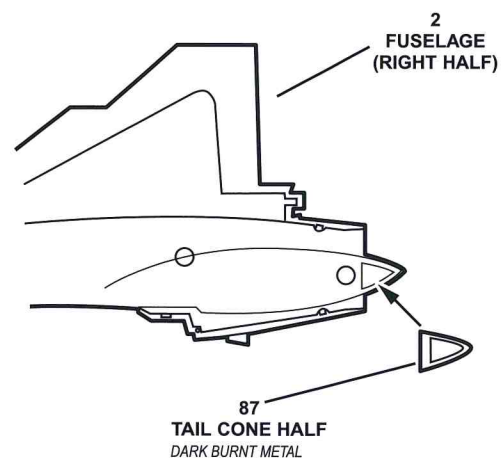




REPEAT FOR OTHER
SIDE OF FUSELAGE

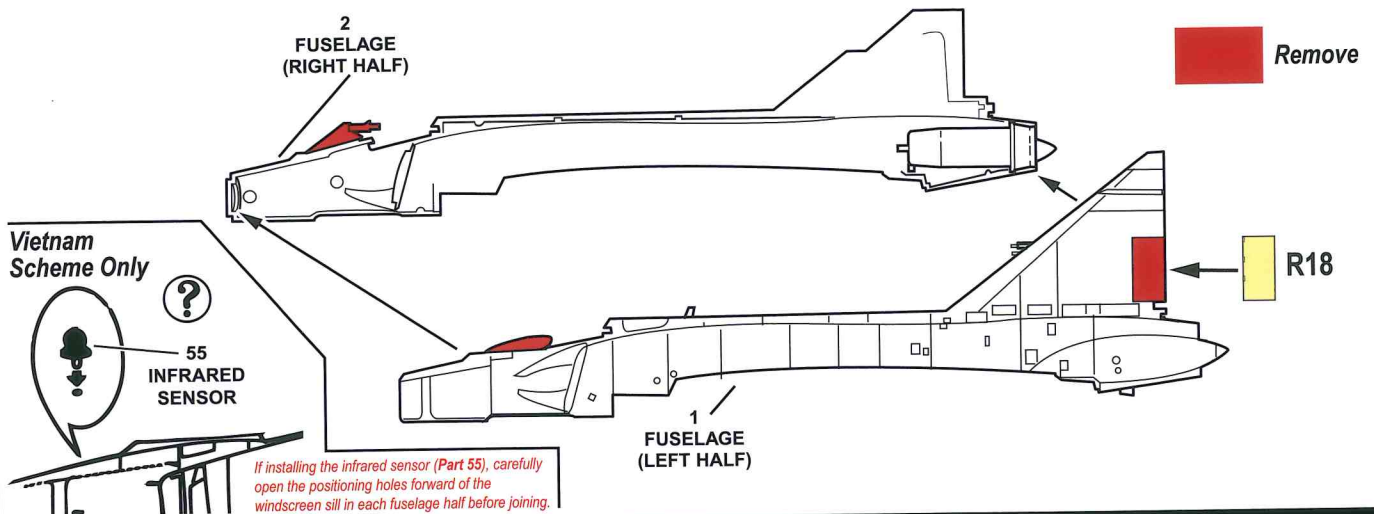


REPEAT FOR OTHER
SIDE USING TAIL
CONE HALF 86



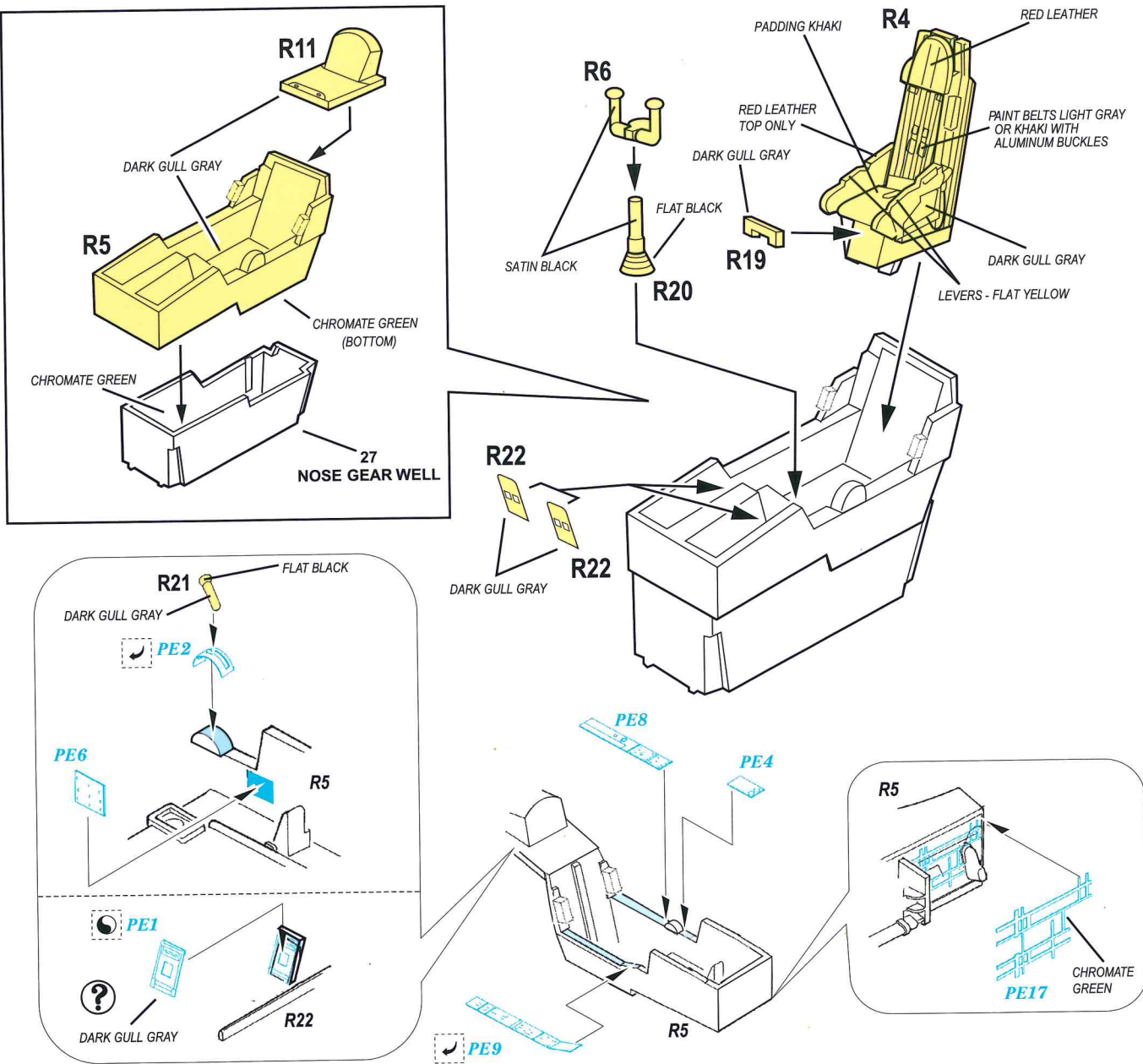
2

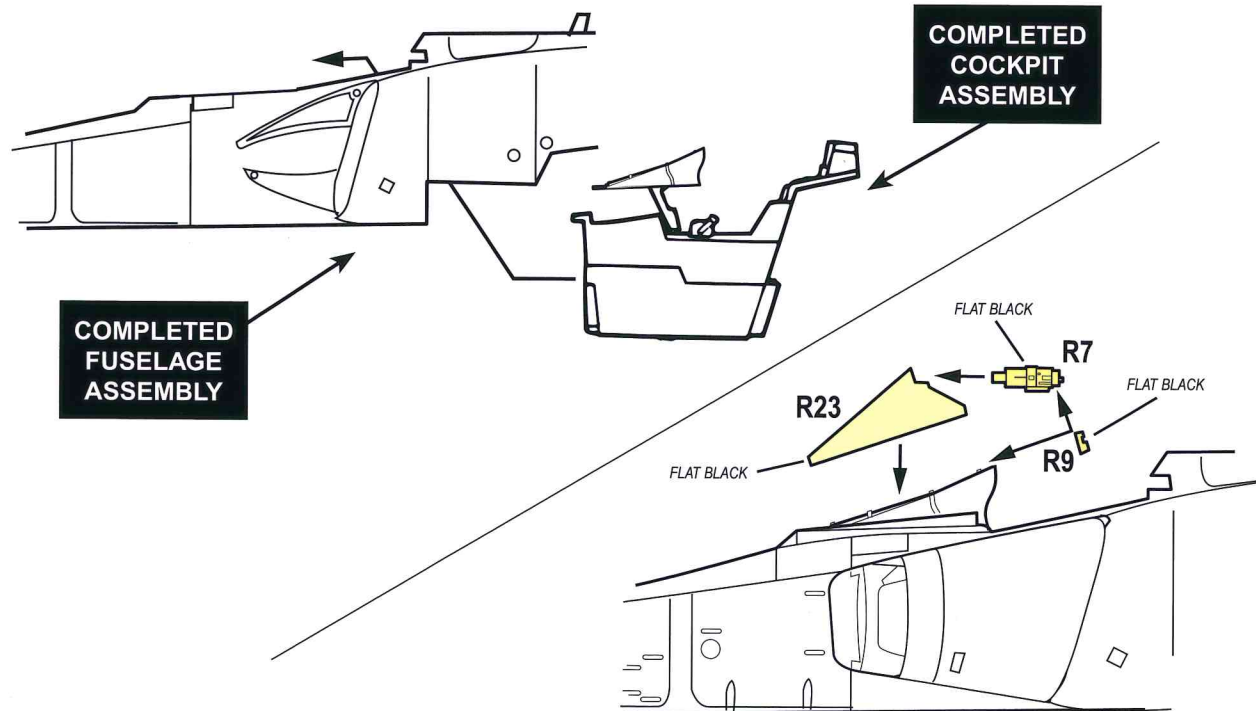
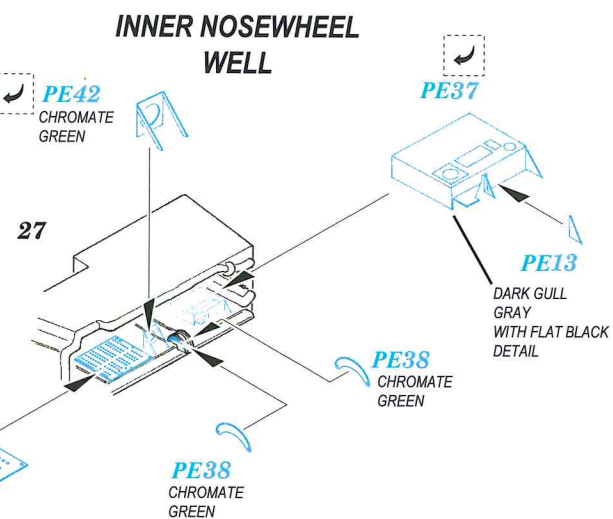
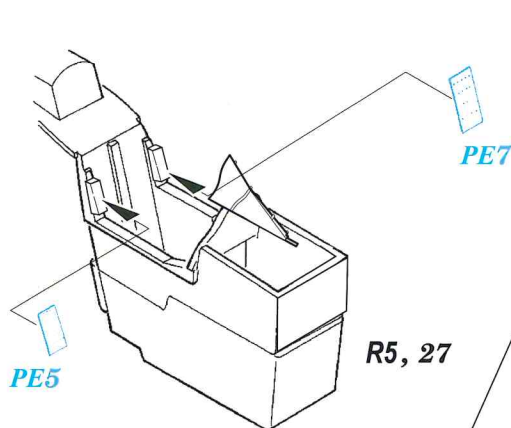
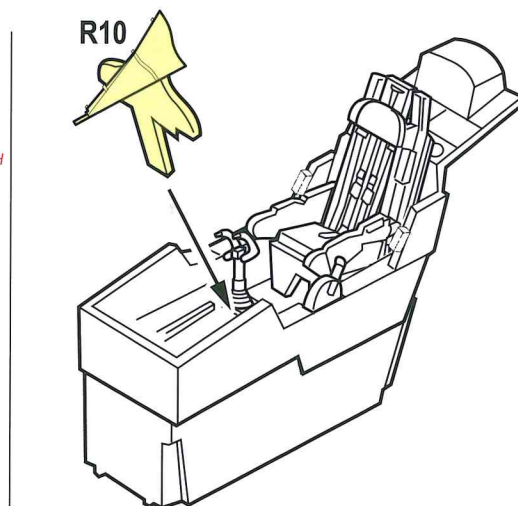
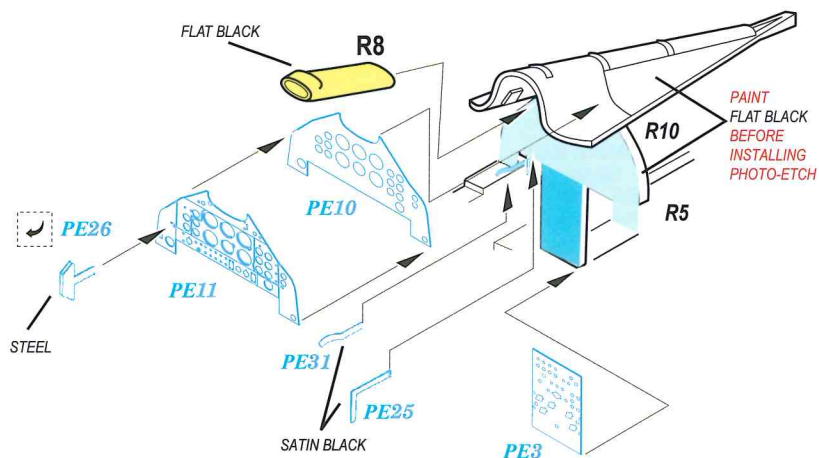
FUSELAGE ASSEMBLY



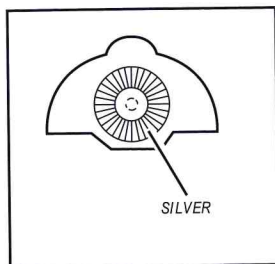
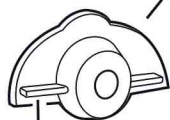
3

COCKPIT ASSEMBLY

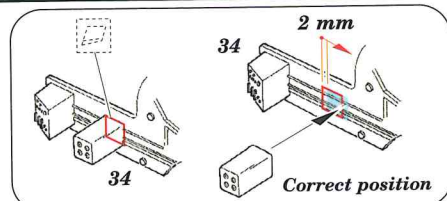




56
ENGINE
BULKHEAD
CHROMATE GREEN



33
FORWARD MAIN
GEAR
BULKHEAD
CHROMATE GREEN

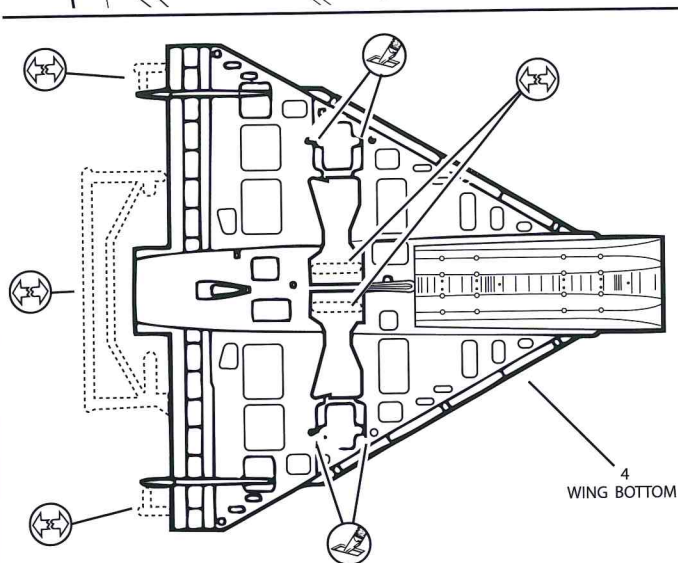


34
AFT MAIN GEAR
BULKHEAD
CHROMATE GREEN

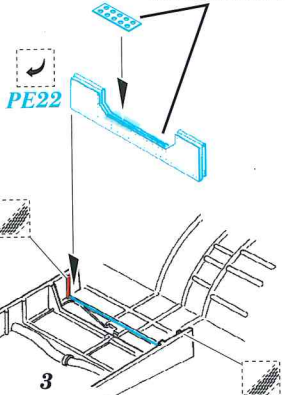
CHROMATE GREEN

CHROMATE GREEN

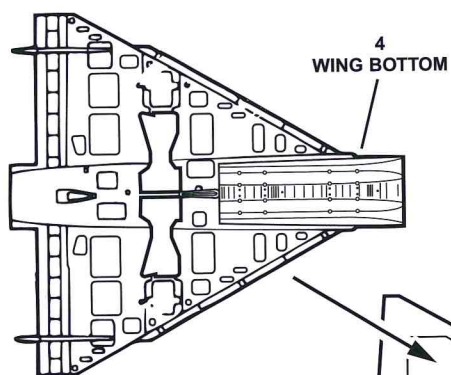
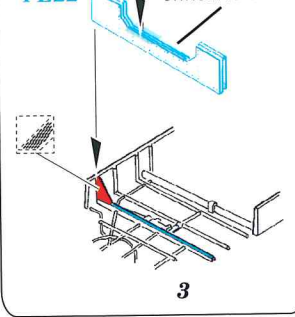
3
WING TOP



PE49
CHROMATE GREEN

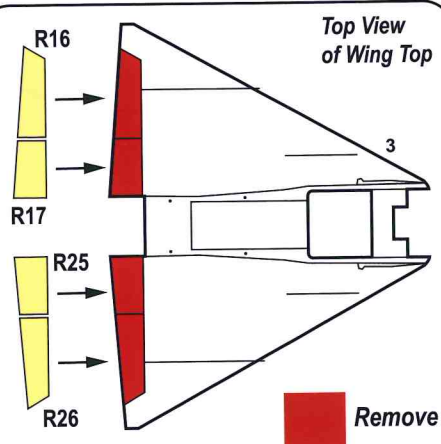


PE49
CHROMATE GREEN



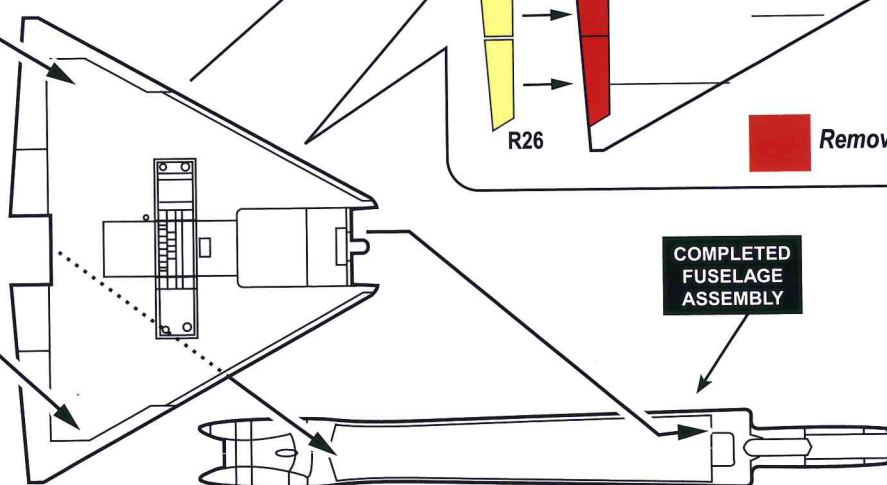
After removing the molded-on control surfaces, there will be a gap between upper and lower wings in the area exposed. The modeler will have to close this gap before installing resin control surfaces to ensure uniform contour with the replacement flaps and elevons.

3
WING TOP



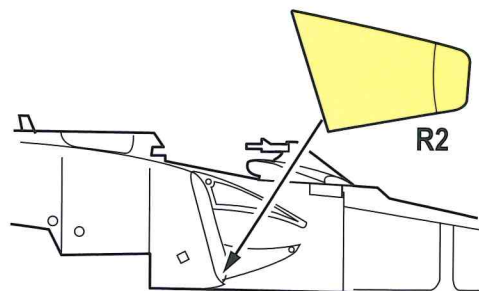
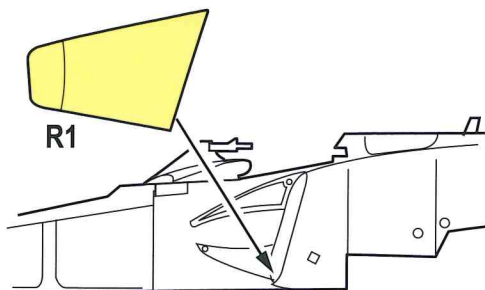
Top View
of Wing Top

COMPLETED
FUSELAGE
ASSEMBLY



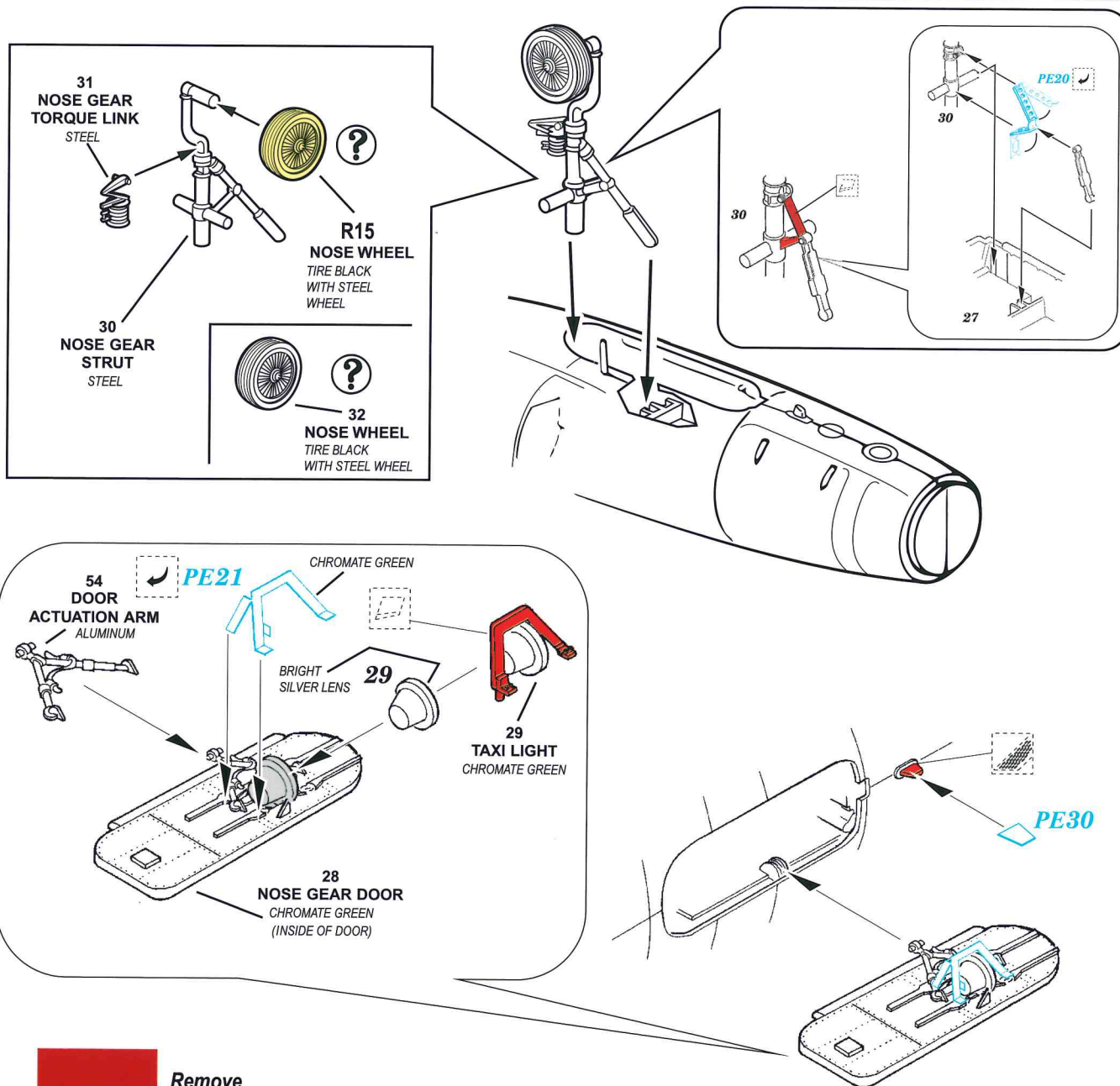
5

ENGINE INTAKE ASSEMBLY



6

NOSE LANDING GEAR ASSEMBLY



A

R14
FLAT BLACK TIRE WITH
ALUMINUM INNER HALF OF
WHEEL AND STEEL
OUTER HALF OF WHEEL

?

41
MAIN WHEEL
INNER HALF
FLAT BLACK TIRE WITH
SILVER INNER HALF OF
WHEEL

40
MAIN WHEEL
OUTER HALF
FLAT BLACK TIRE WITH STEEL
OUTER HALF OF WHEEL

2pcs
40 or R14

PE41

76
RIGHT MAIN
GEAR STRUT
STEEL

77
RIGHT RETRACTION
ARM
STEEL

RIGHT SIDE SHOWN
REPEAT FOR LEFT SIDE
with parts 37, 38, 40 and 41

Forward

PE40

PE34

76

37

PE36

B

Remove

75
RIGHT MAIN GEAR
DOOR
CHROMATE GREEN
(INSIDE OF DOOR)

43

43

75

36

16

18

78
RIGHT DOOR
SCISSORS
STEEL

Forward

A

Bend Over

B

78

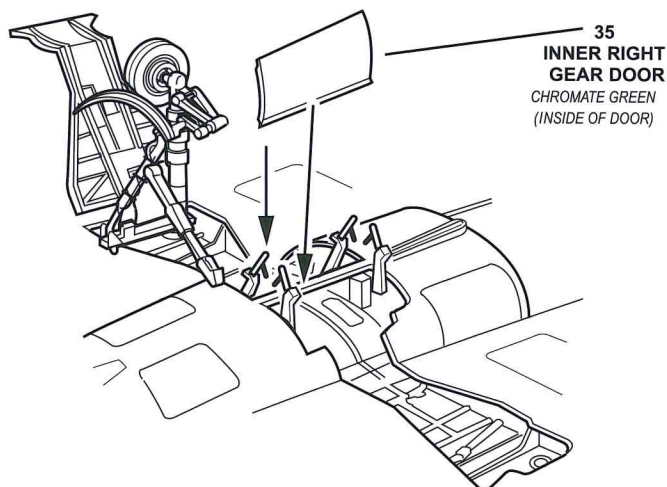
PE45

PE45

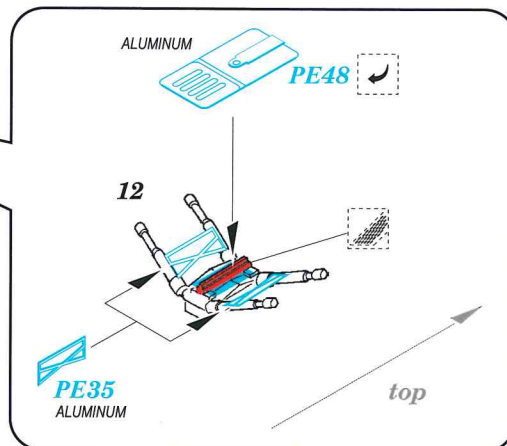
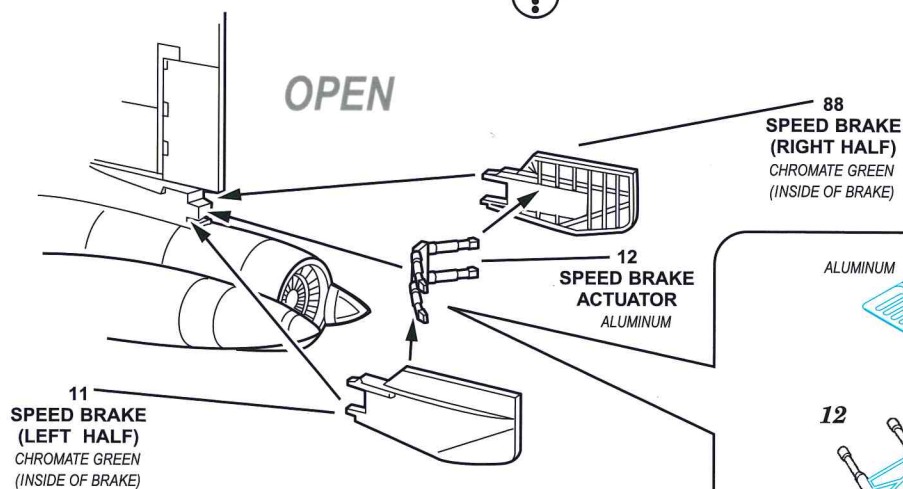
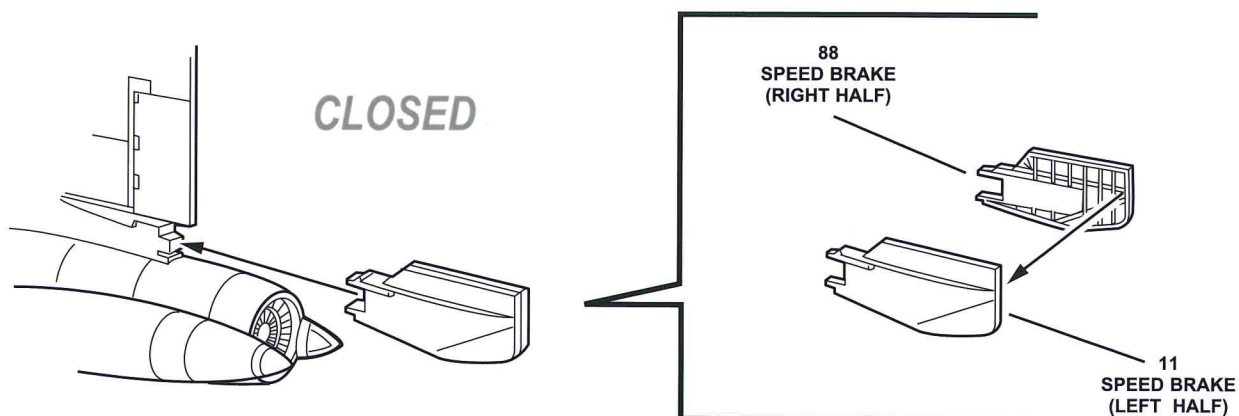
RIGHT SIDE SHOWN
REPEAT FOR LEFT SIDE
with parts 36 and 39

C

RIGHT SIDE SHOWN
REPEAT FOR LEFT SIDE
WITH PART 74

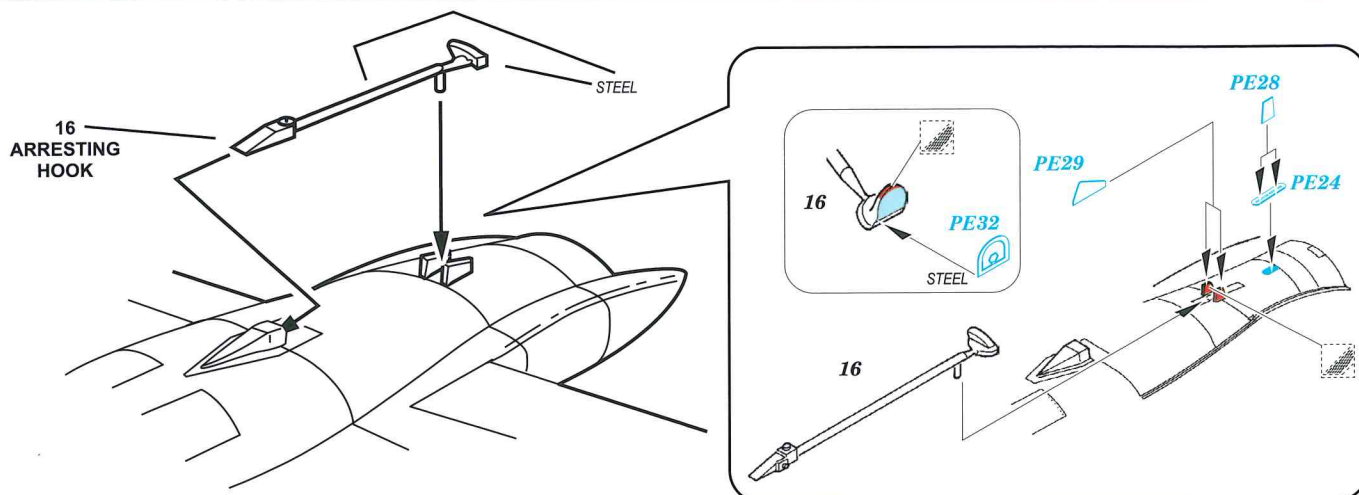


SPEED BRAKE ASSEMBLY



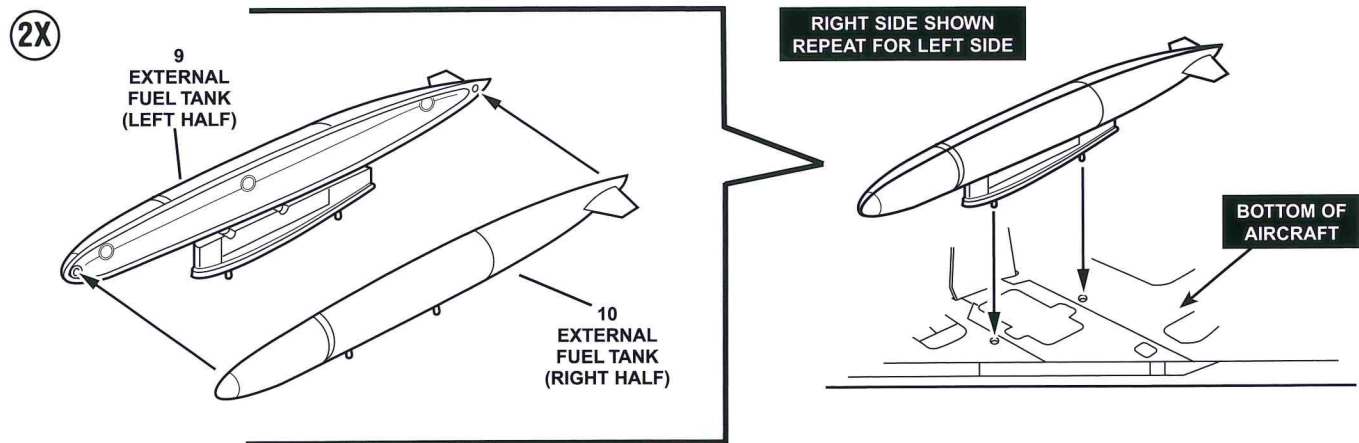
9

TAILHOOK ASSEMBLY



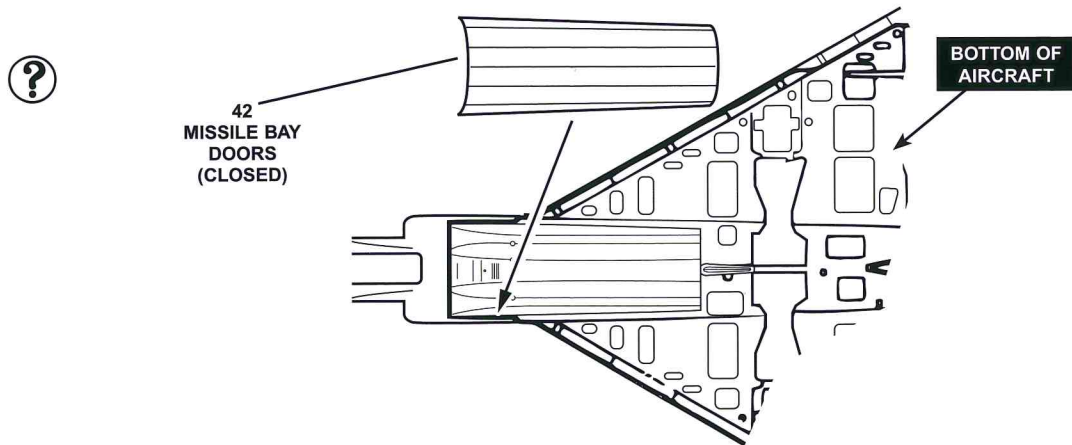
10

EXTERNAL FUEL TANK ASSEMBLY

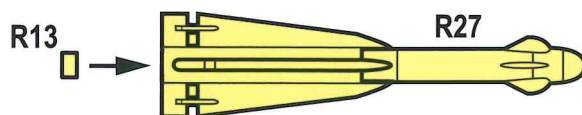


11

MISSILE BAY DOOR ASSEMBLY (DOORS CLOSED)

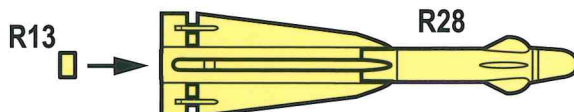


(3X)

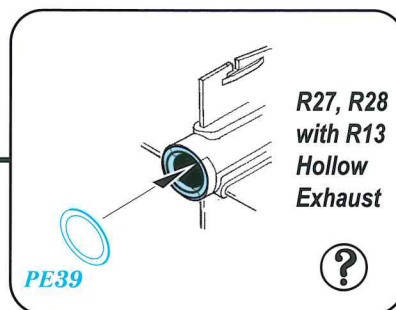


AIM-4A SEMI-ACTIVE RADAR HOMING FALCON MISSILE

(3X)

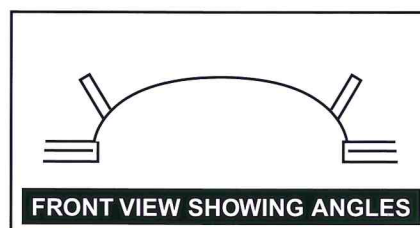
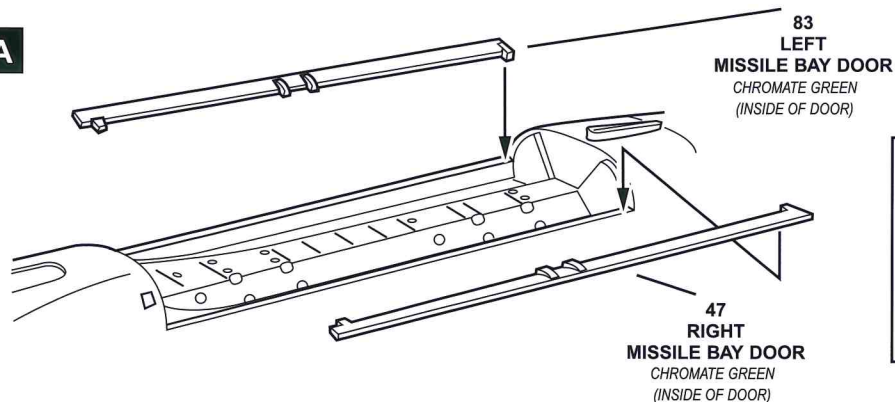


AIM-4D INFRARED GUIDED FALCON MISSILE

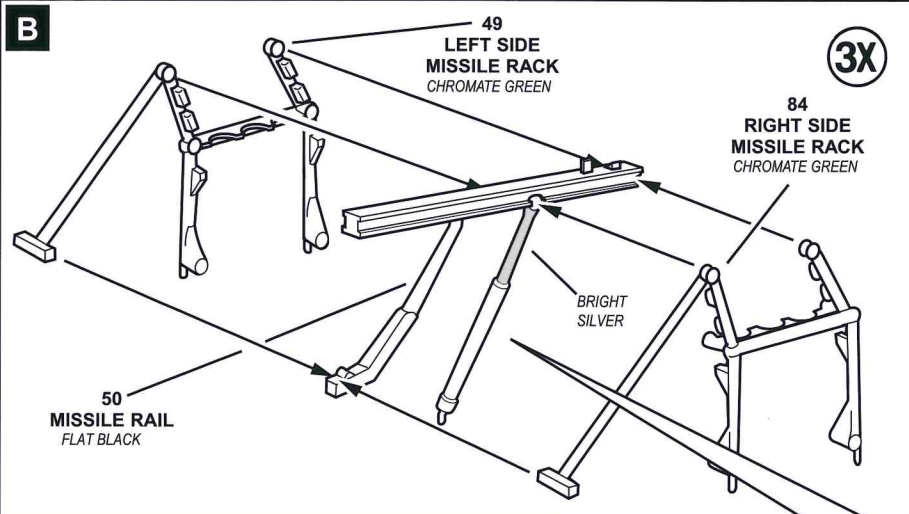


13 MISSILE BAY ASSEMBLY (DOORS OPEN)

A

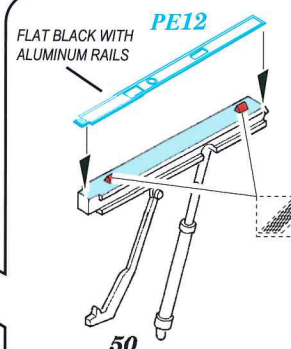
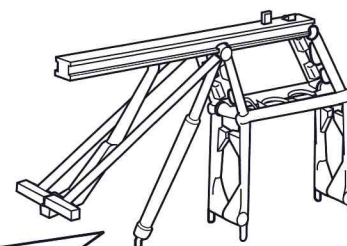


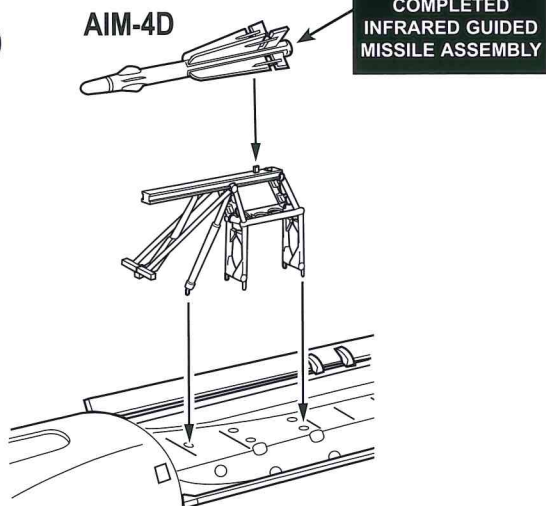
B



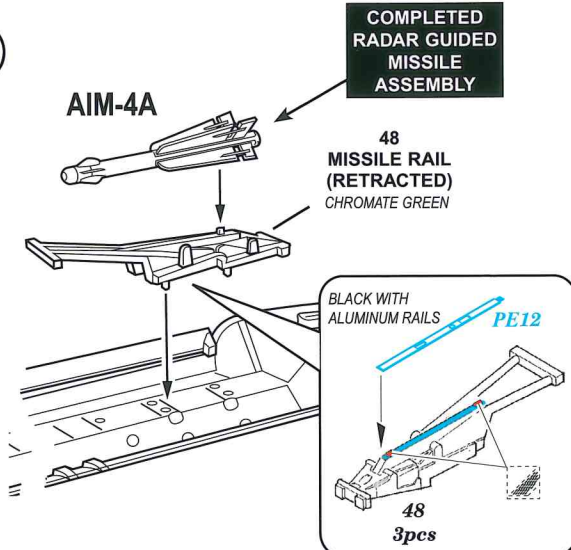
(3X)

EXTENDED LAUNCH RAIL

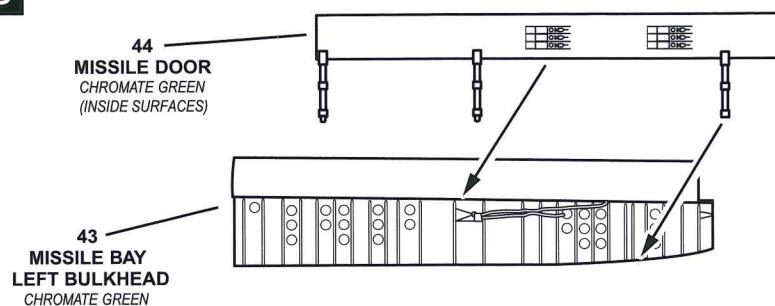


C**(3X)**

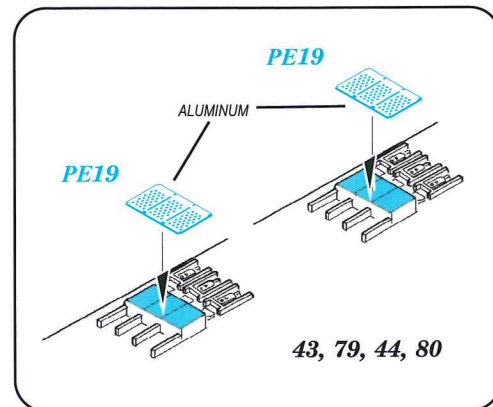
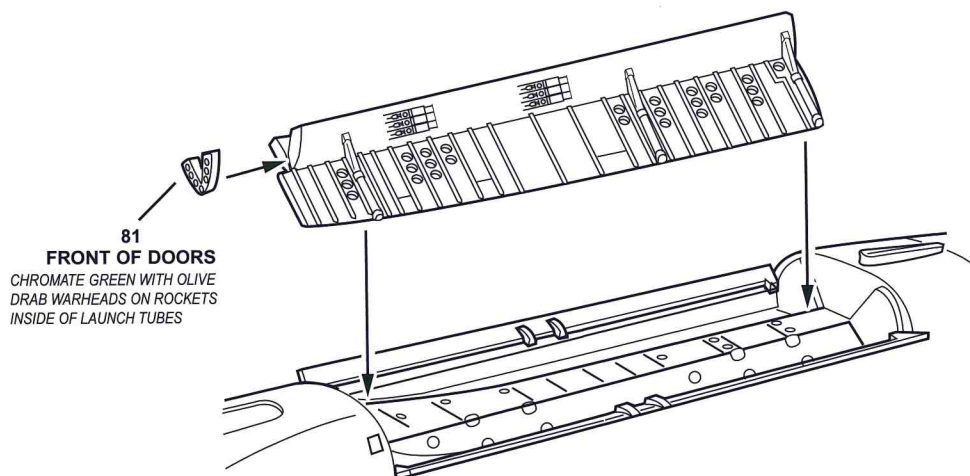
CENTER FORWARD MISSILE RAIL SHOWN
REPEAT FOR LEFT AND RIGHT FORWARD MISSILE RAILS

(3X)

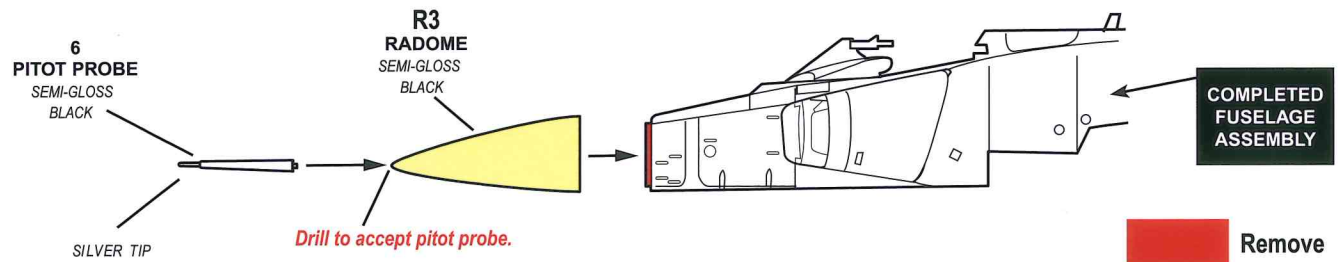
CENTER AFT MISSILE RAIL SHOWN
REPEAT FOR LEFT AND RIGHT AFT MISSILE RAILS

D

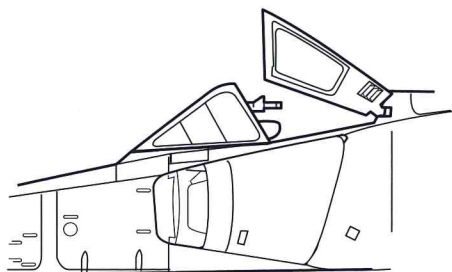
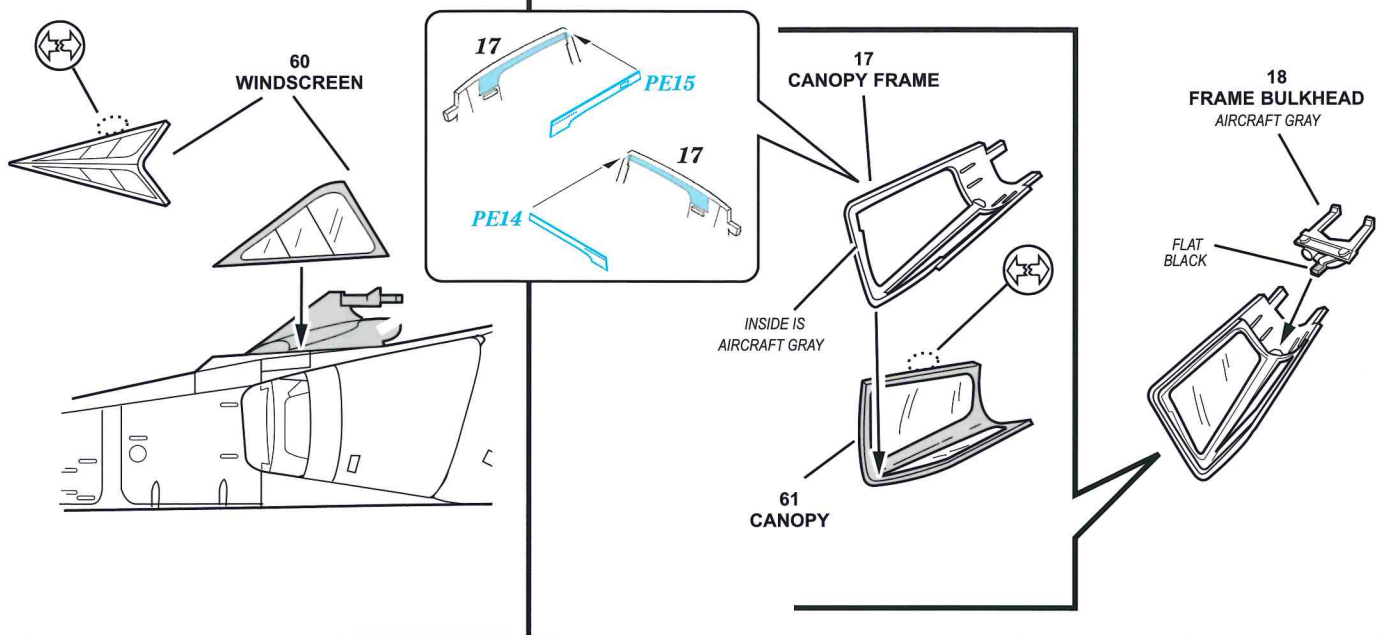
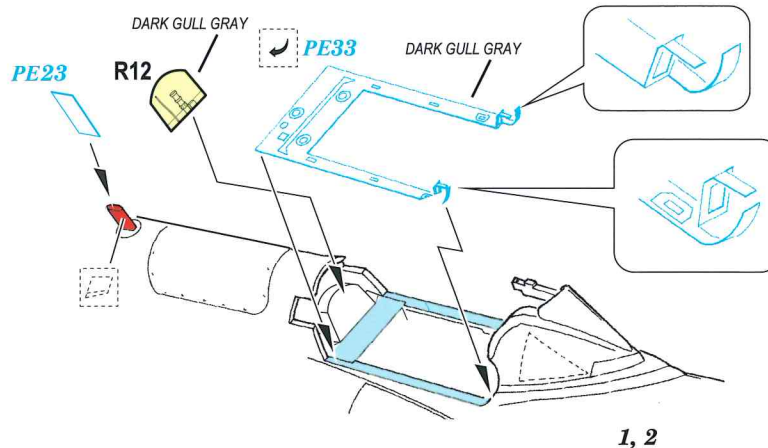
LEFT SIDE BULKHEAD AND DOOR SHOWN
REPEAT FOR RIGHT SIDE BULKHEAD AND DOOR

**E**

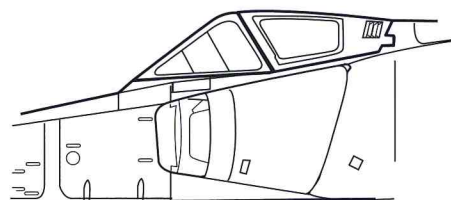
LEFT SIDE SHOWN
REPEAT FOR RIGHT SIDE



15 WINDSCREEN / CANOPY ASSEMBLY



CANOPY OPEN



CANOPY CLOSED

MISSILE PAINTING GUIDE

GLOSS YELLOW SATIN WHITE

DECAL PLACEMENT

ALL T GRAY

27

29

29

32

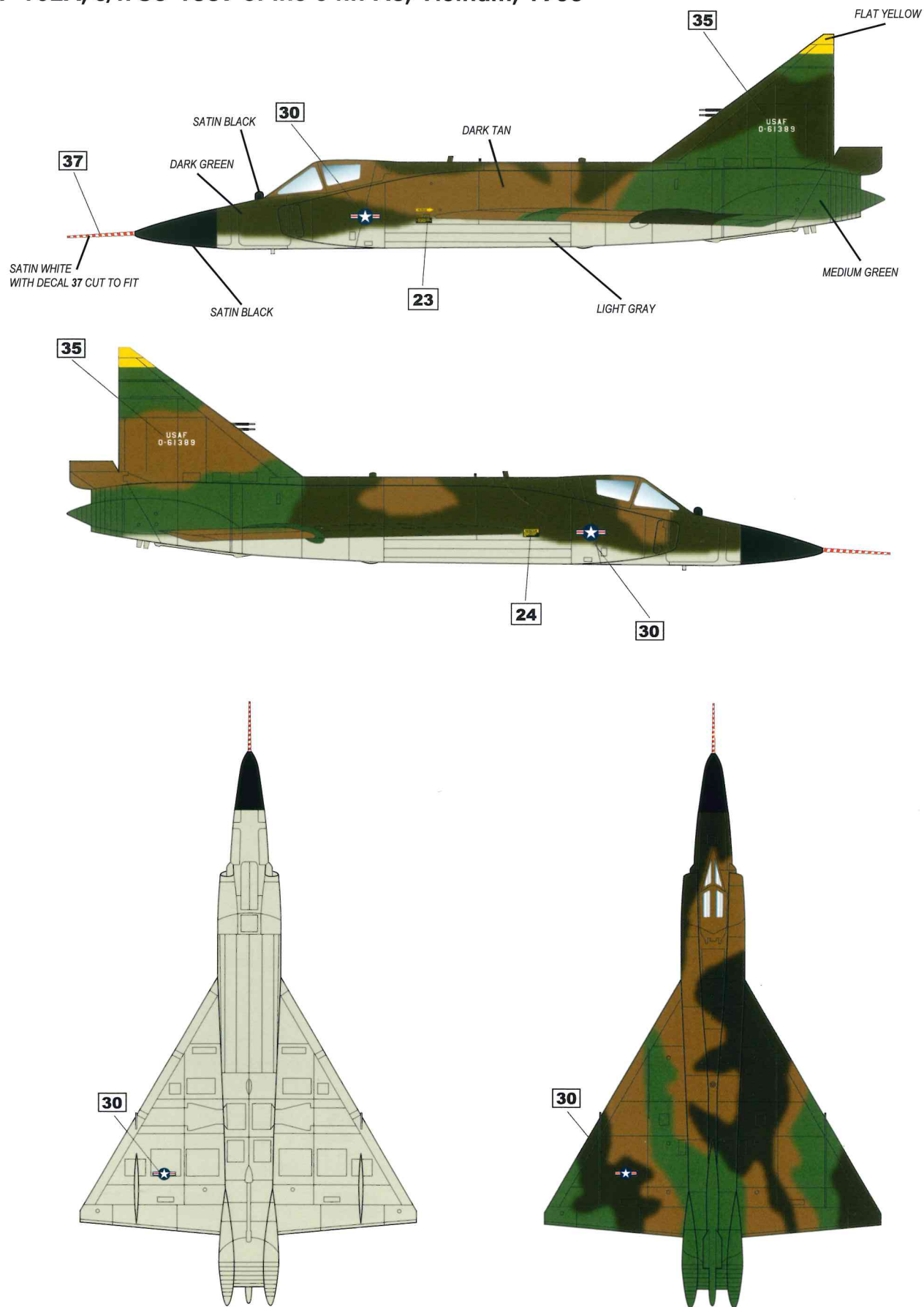
33

USAF

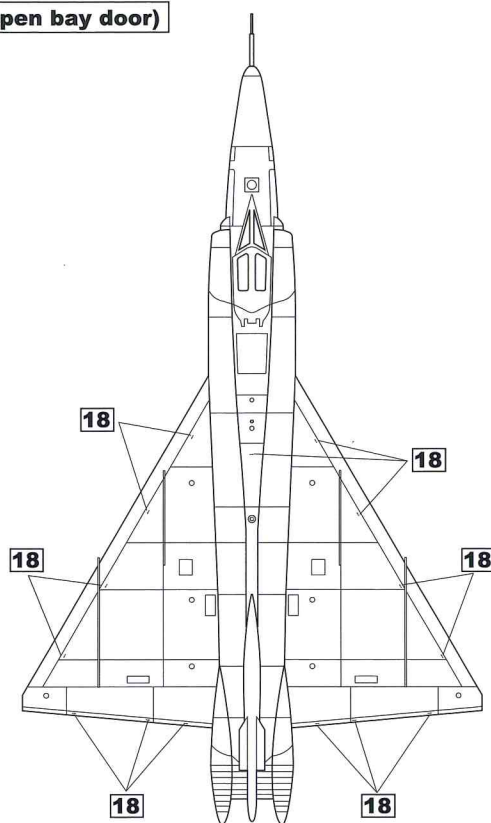
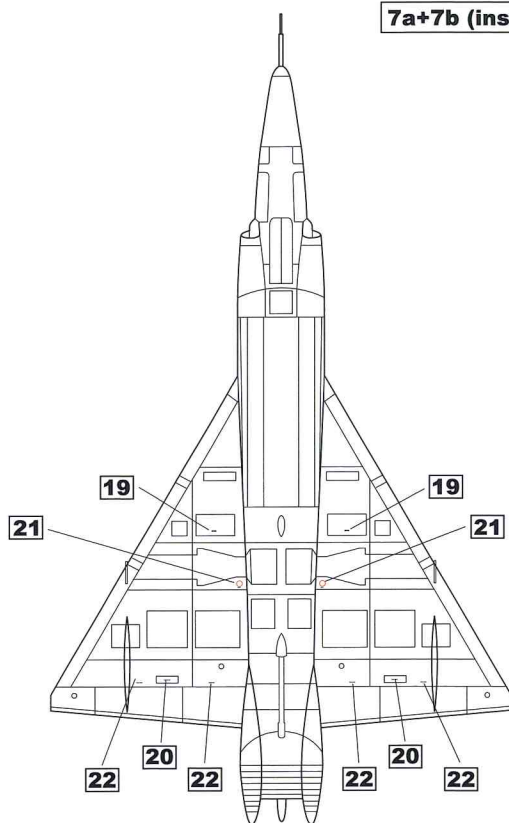
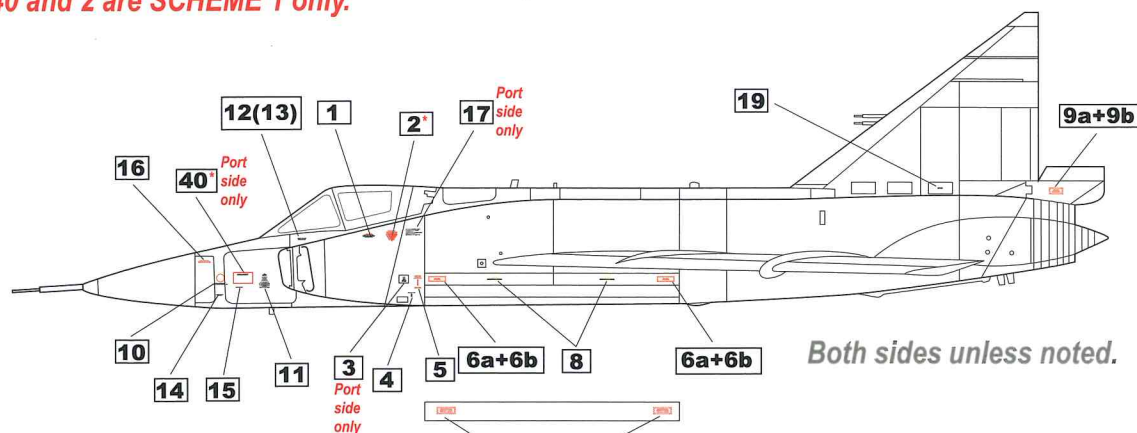
GLOSS BLACK

GLOSS YELLOW

F-102A, s/n 56-1389 of the 64th FIS, Vietnam, 1966



**Decals 40 and 2 are SCHEME 1 only.*



COLOR REFERENCE

 Dark Gull Gray FS 36231	 Flat Black FS 37038	 Satin Black FS 27038	 Gloss Black FS 17875	 Khaki FS 34201	 Satin White FS 27875	 Red-Orange FS 21302
 Satin Red FS 21136	 Olive Green FS 34086	 Medium Green FS 34102	 Dark Tan FS 30219	 Dark Green FS 34079	 Light Gray FS 36440	 Gloss Yellow FS 13538
 Aircraft Gray FS 16473	 Flat Yellow FS 33538	 Chromate Green	 Red Leather	 Dark Burnt Metal	 Tire Black	 Aluminum
 Bright Silver	 Steel	 Titanium	 Flesh			