

Israeli AF KFIR C2/C7

Assembly guide

WMK48002

1/48 Scale



Drill



Remove



2 Set



Bend



Optional



Decal



Super Glue



Fill Hole



No Cement



Be Careful

CAUTION

*Read carefully and fully understand the instructions before commencing assembly.

*Keep out of reach of children. Children must not be allowed to put any parts in their mouths, or pull plastic bag over their heads.

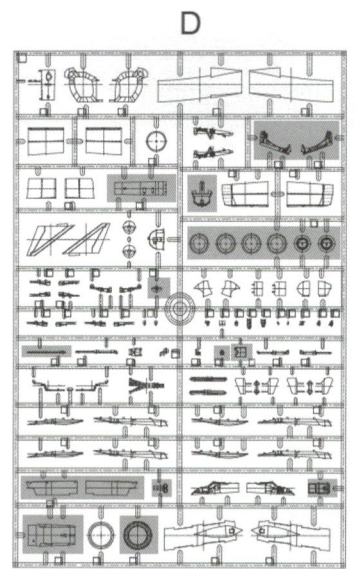
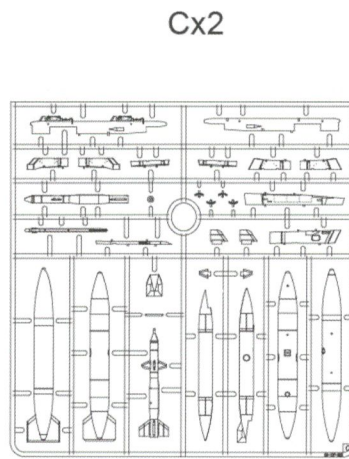
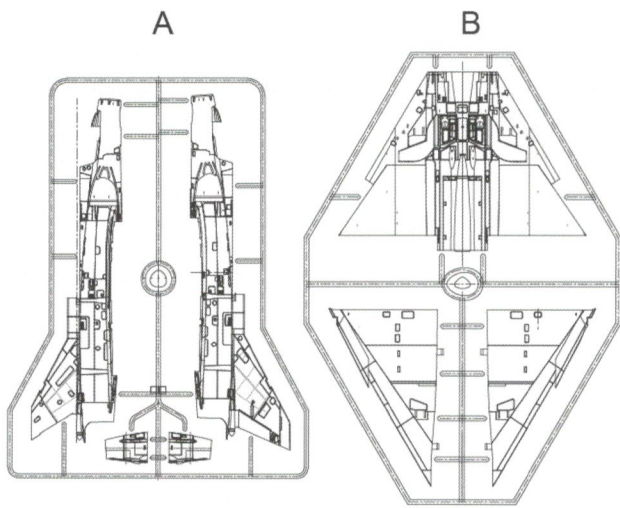
*When using adhesives and paints, please make sure not to use them in closed room or near the fire.


*When assembling this kit, tools including knives are used. Extra care should be taken to avoid injury.

WARNING: CONTAIN SMALL PARTS NOT FOR CHILDREN UNDER 14 YEARS OF AGE.

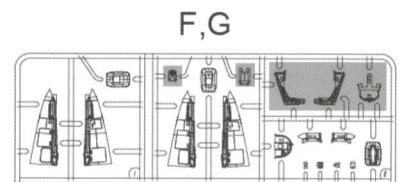
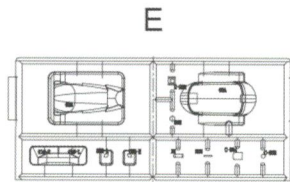
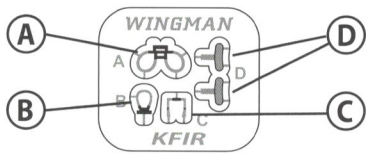


We are right beside you!

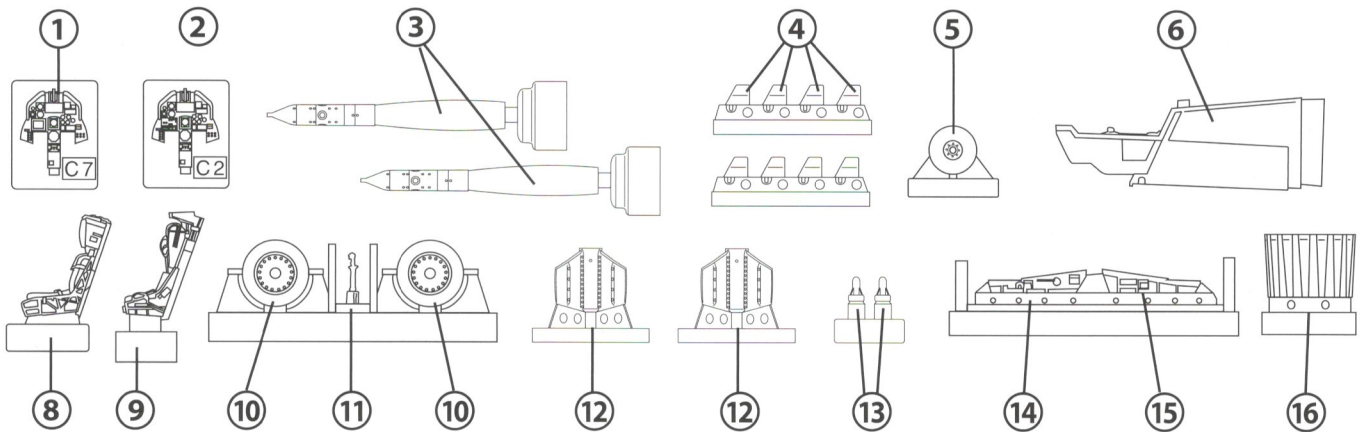


Parts not in use or been replaced with resin parts. 

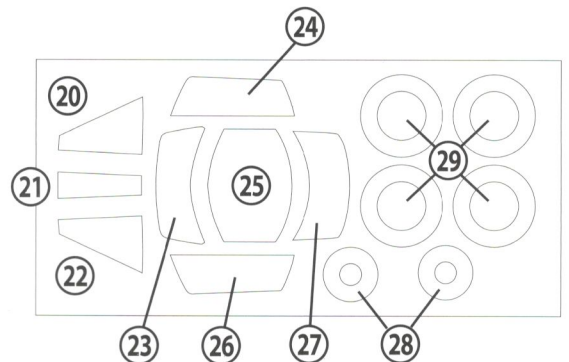
Ech parts



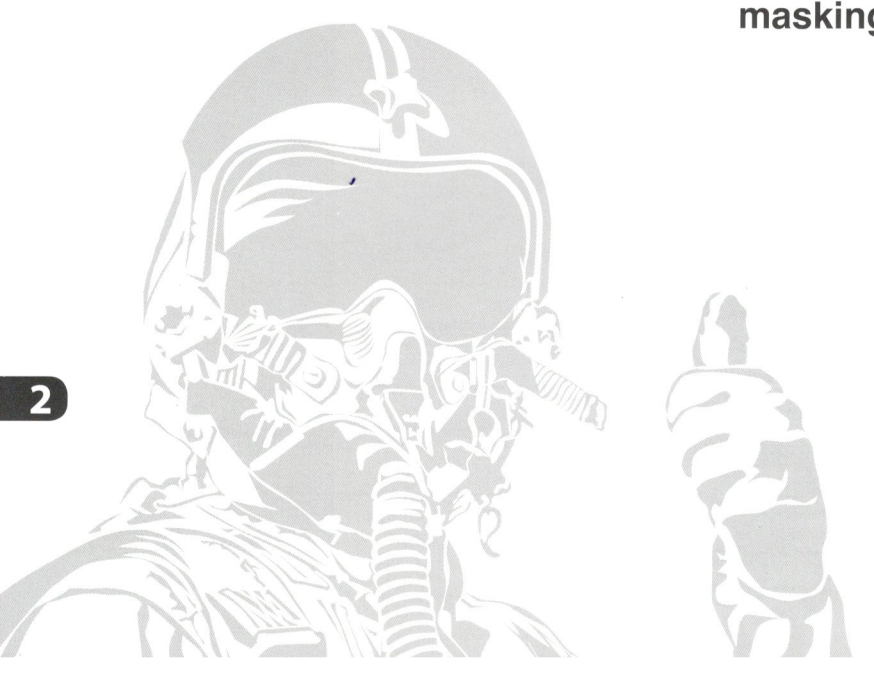
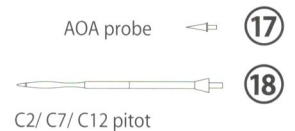
Resin parts



Paper masking

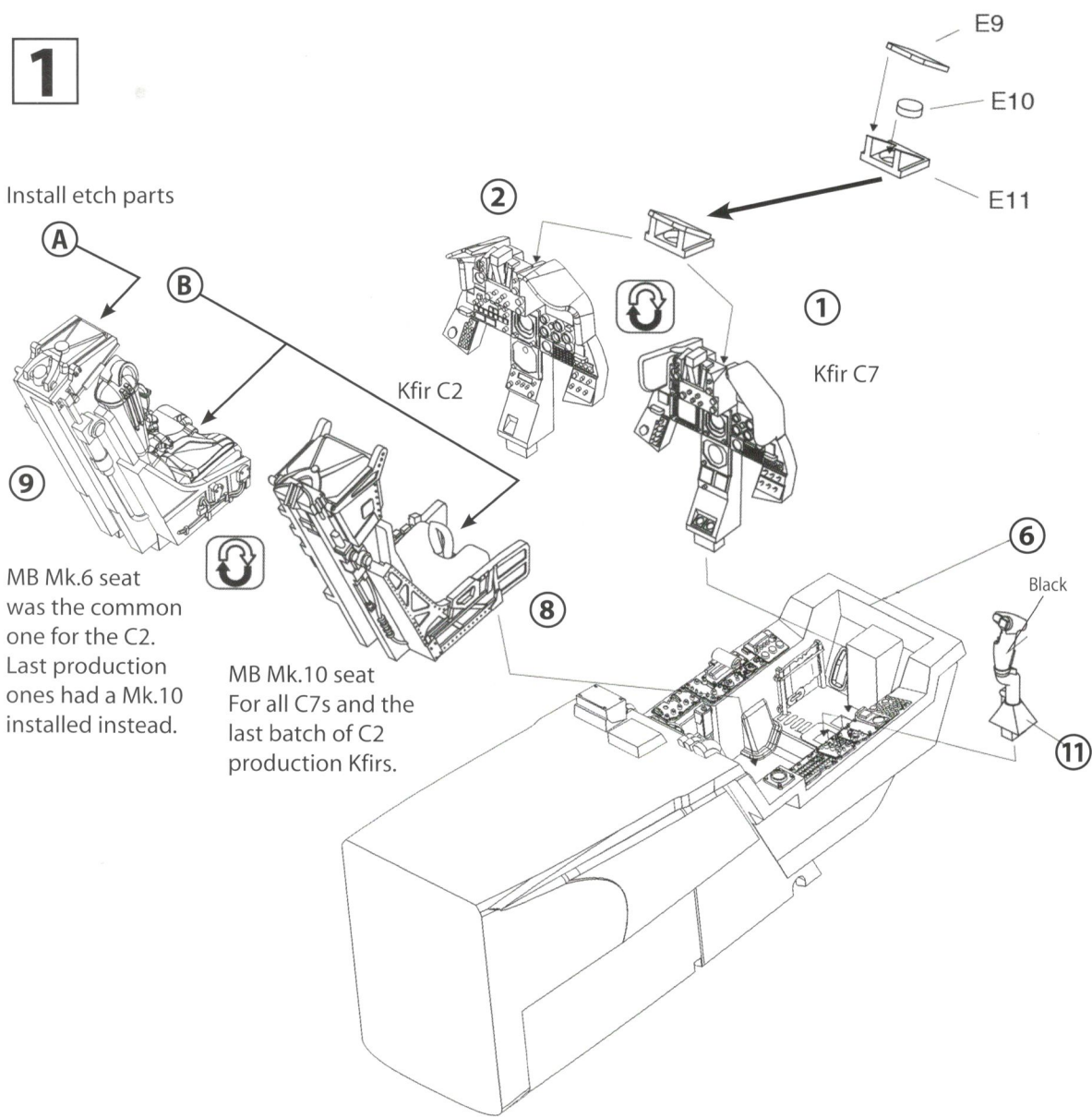


Brass parts

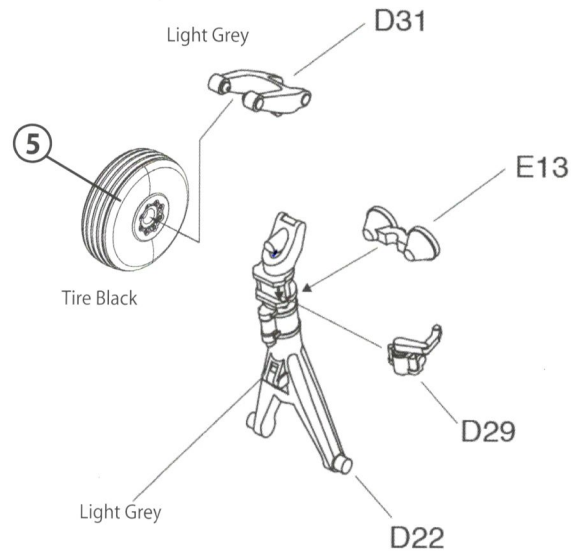


1

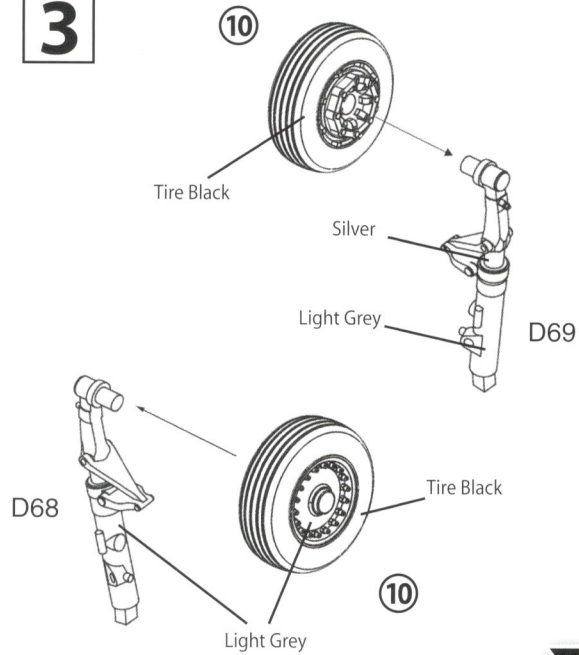
Install etch parts



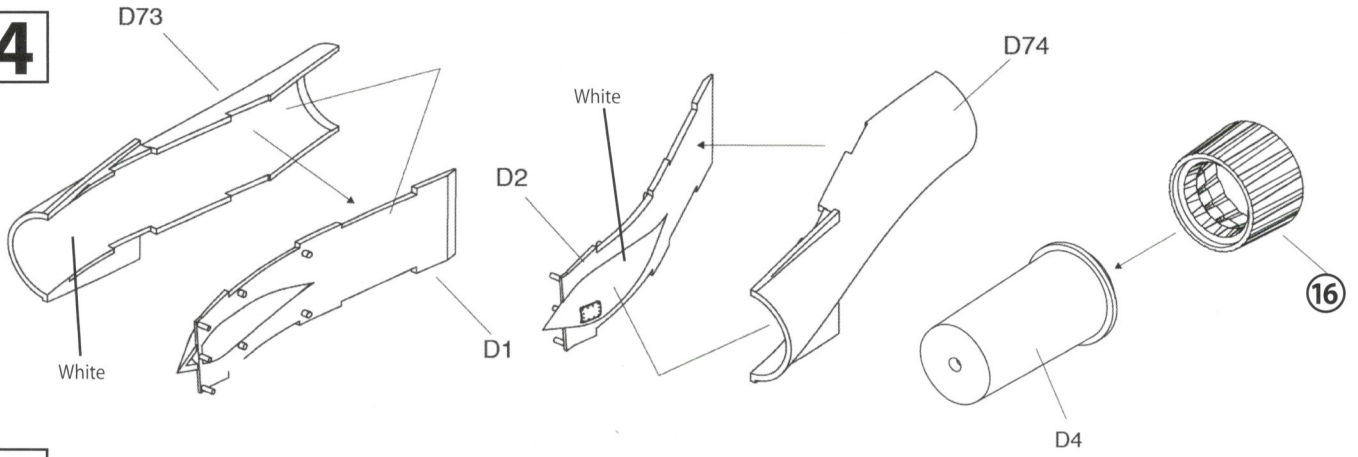
2



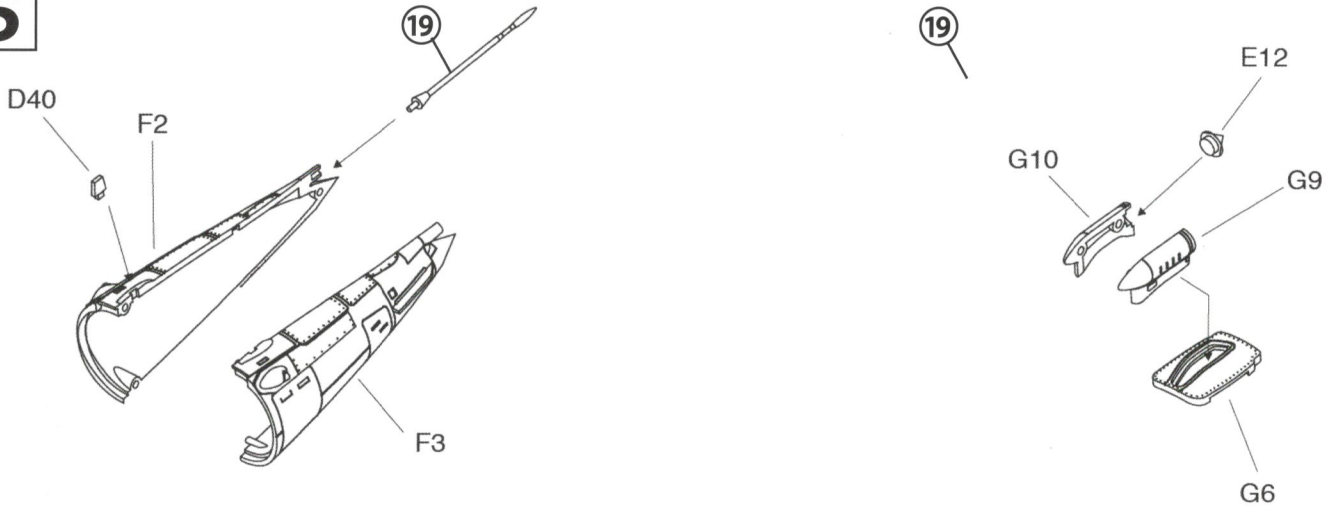
3



4

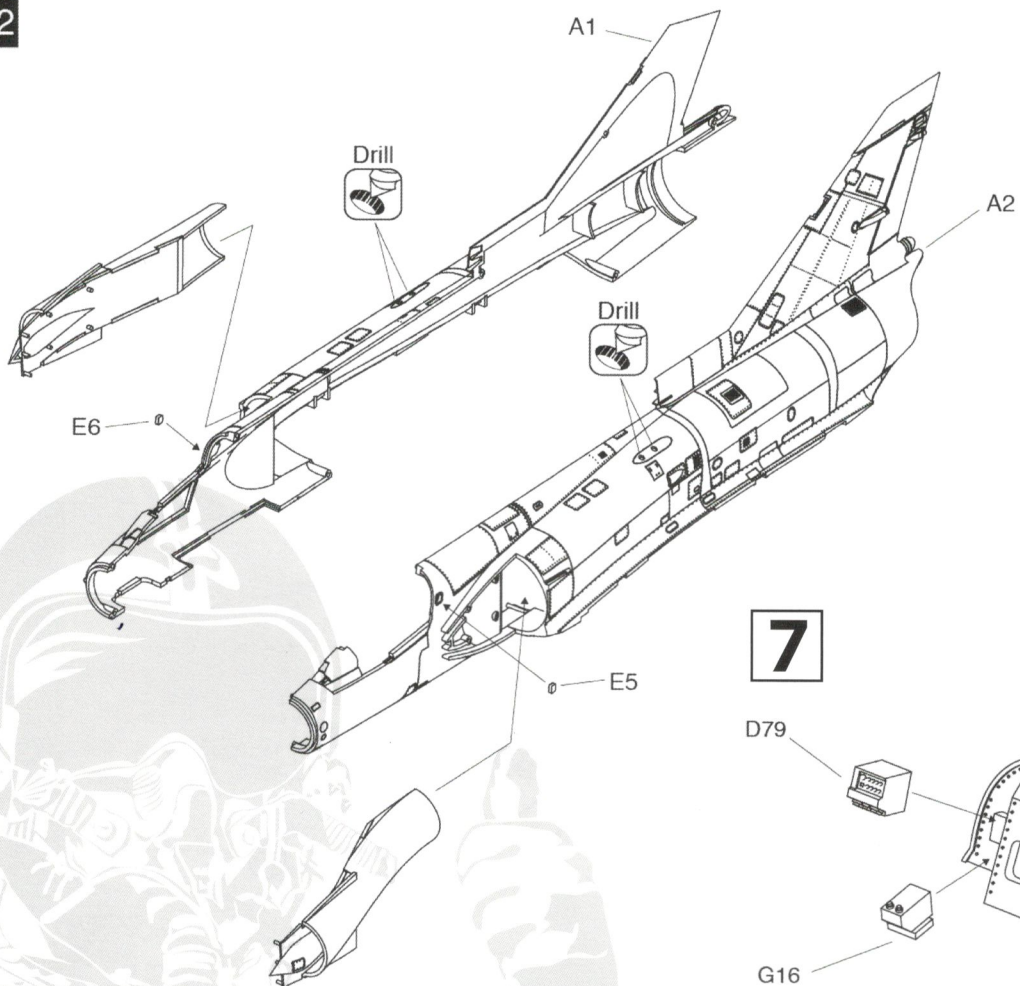


5

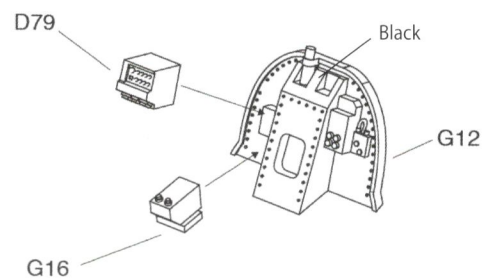


C2

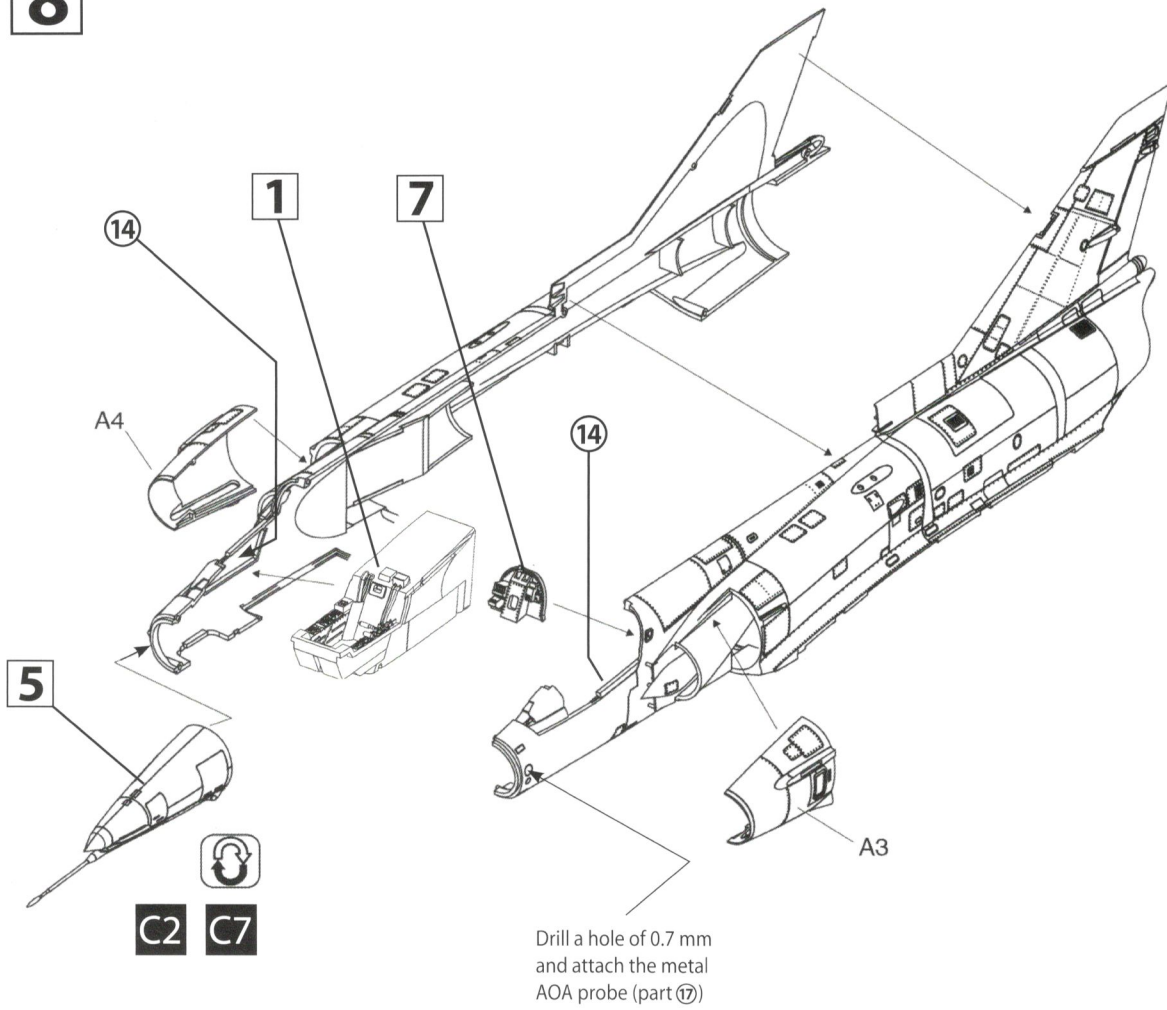
6



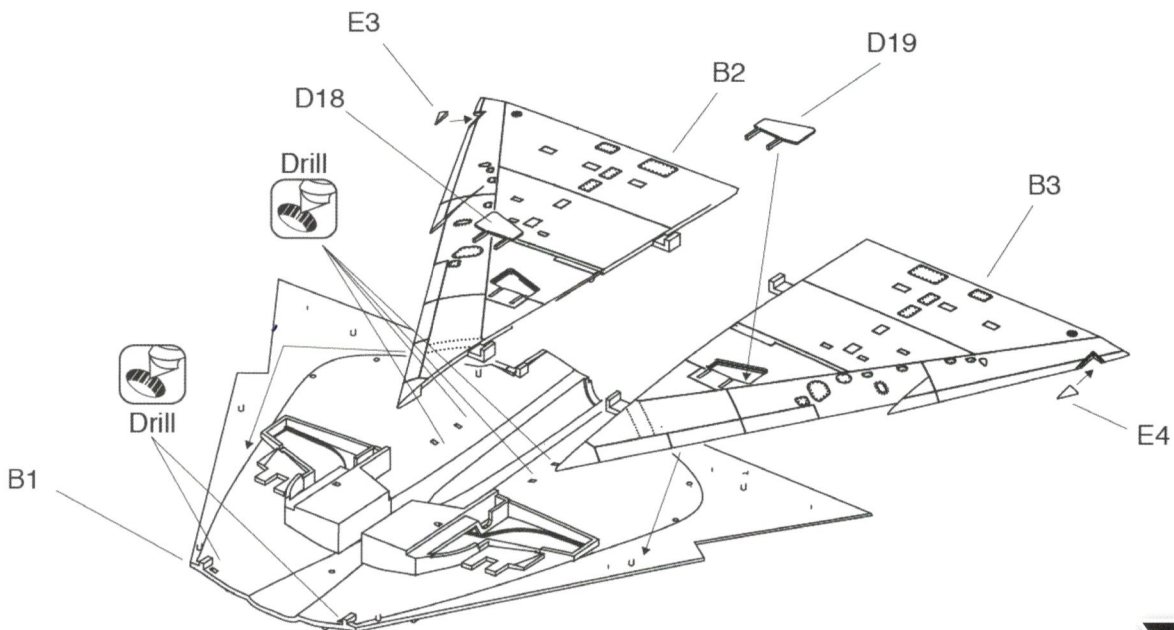
7



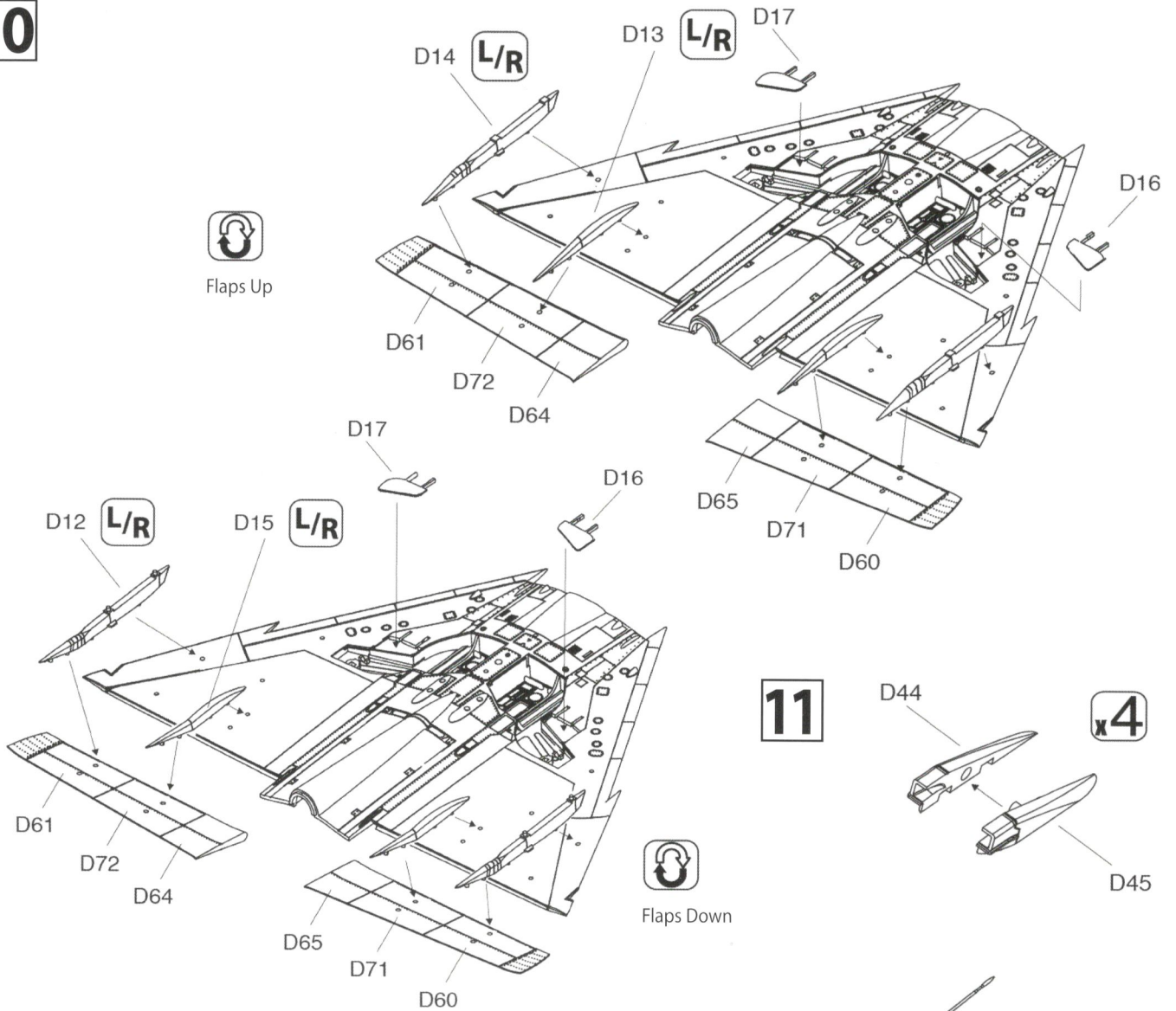
8



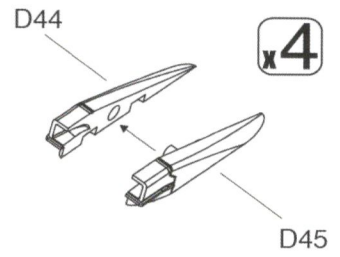
9



10

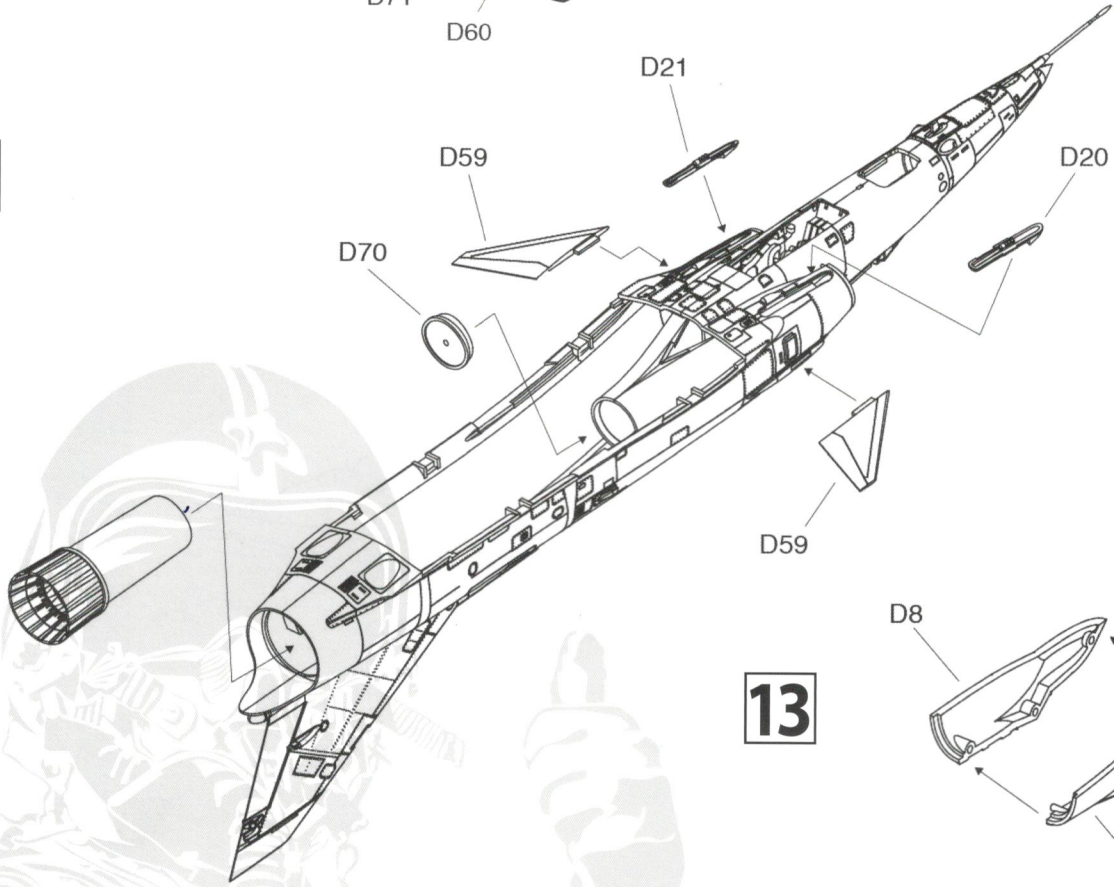


11

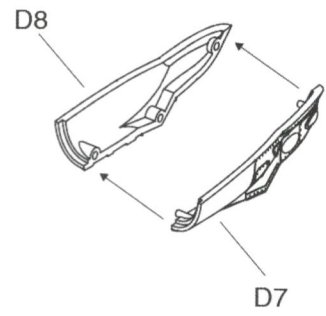


Flaps Down

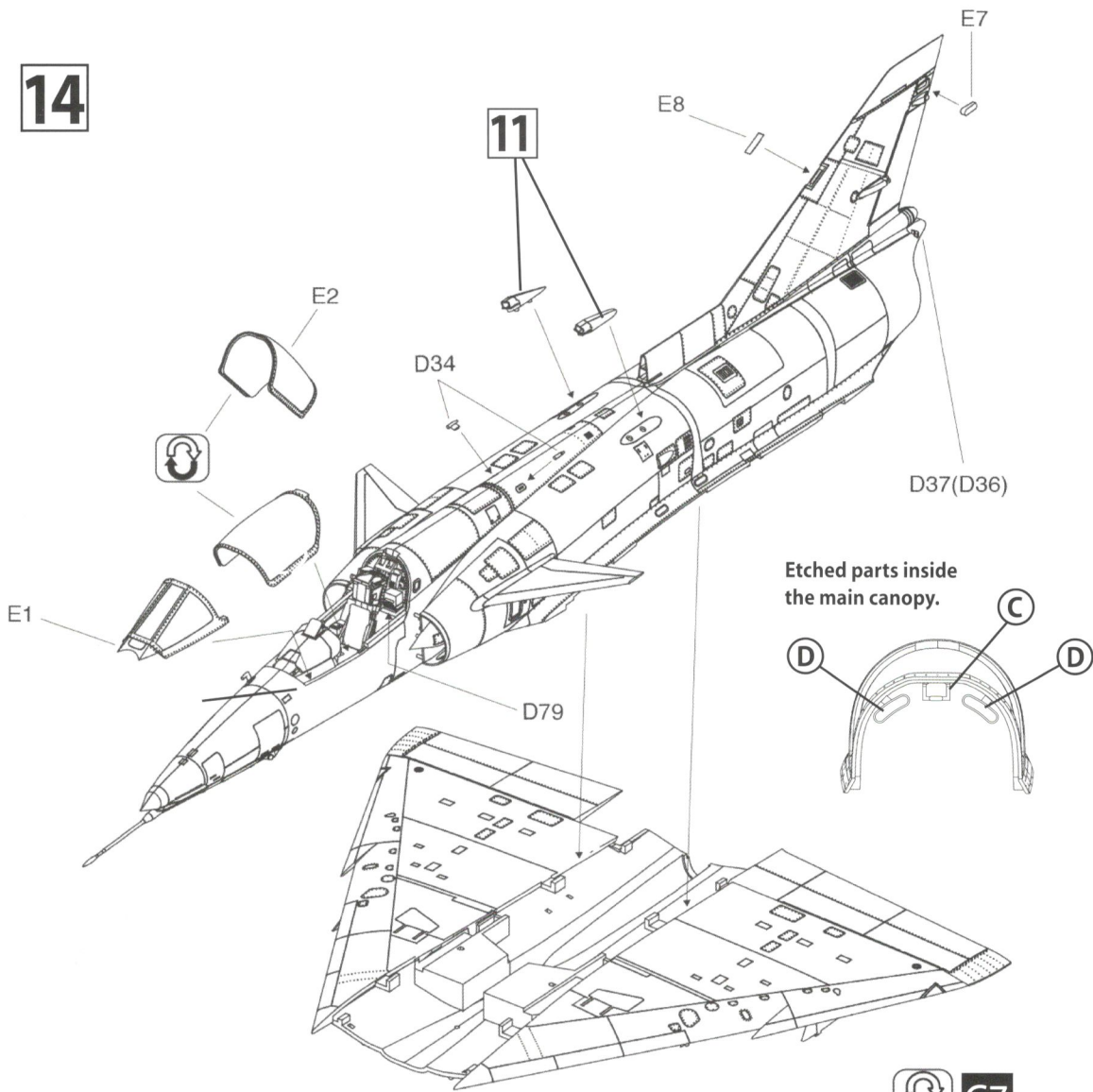
12



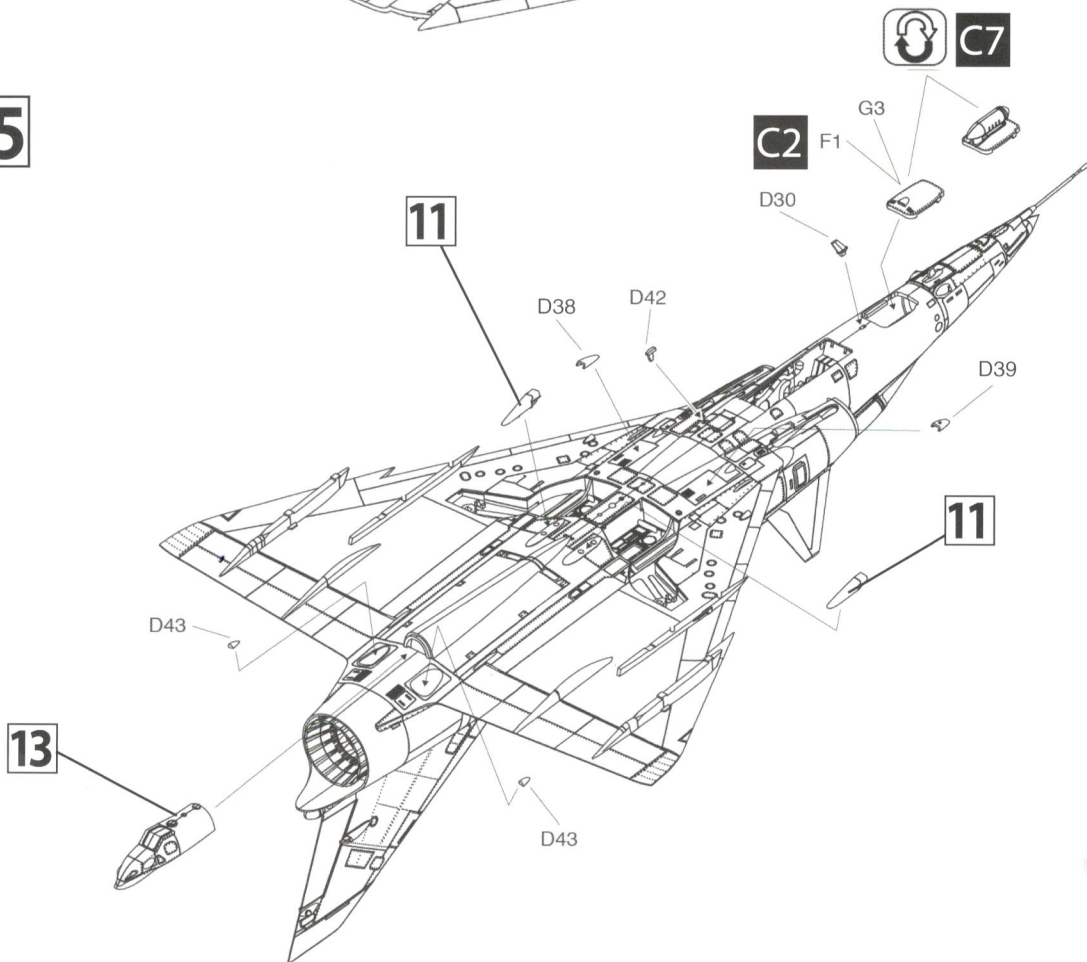
13



14

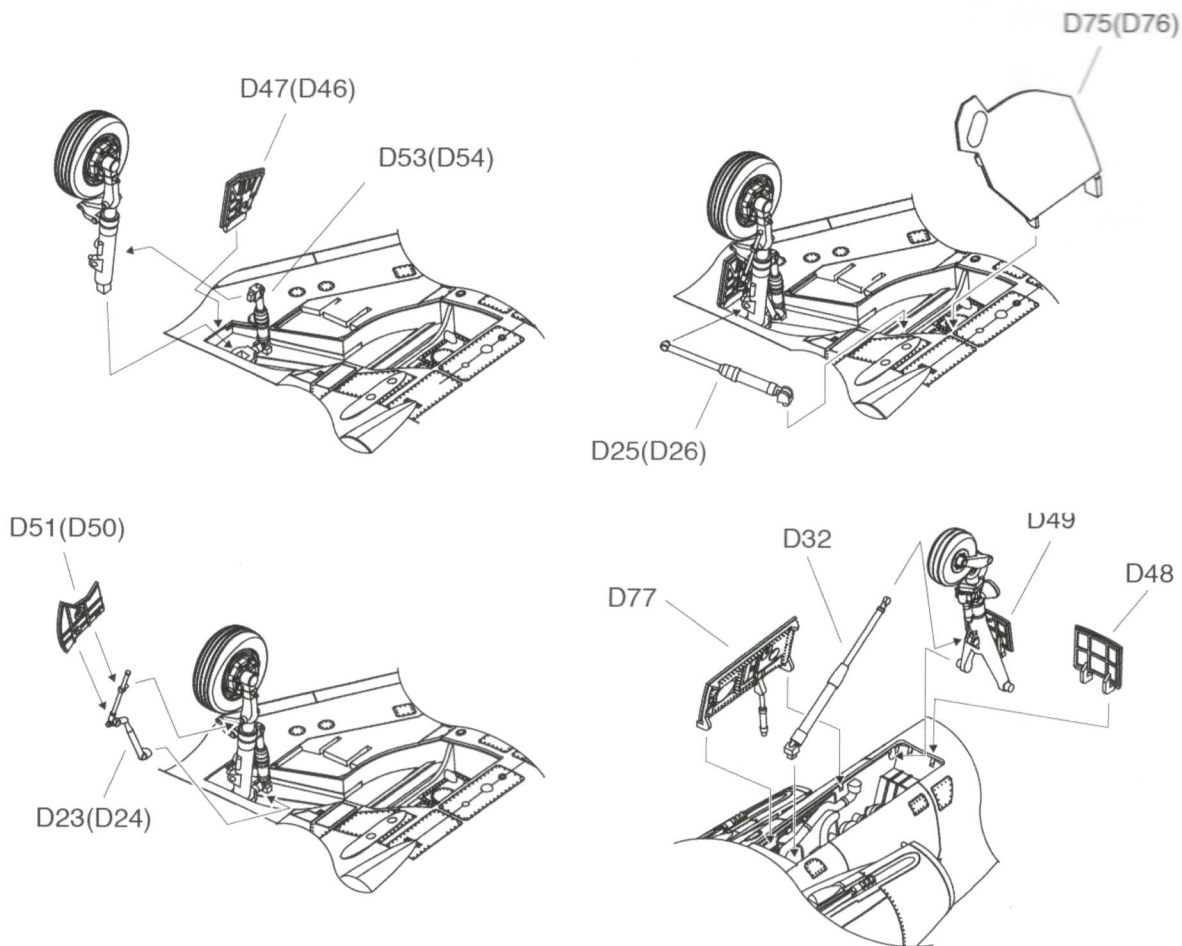
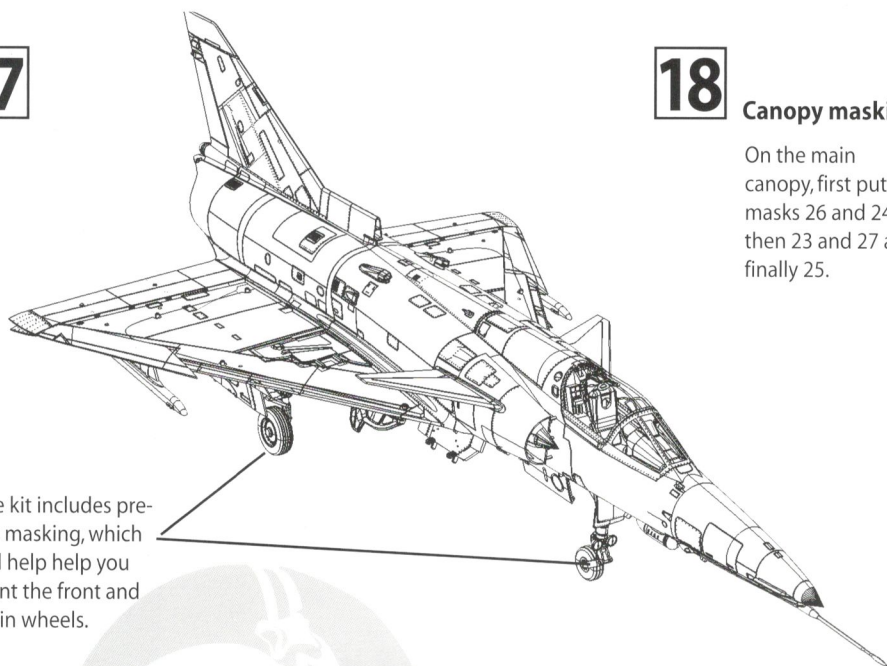


15



13

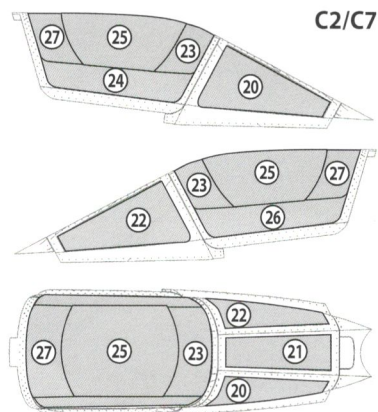


16**17**

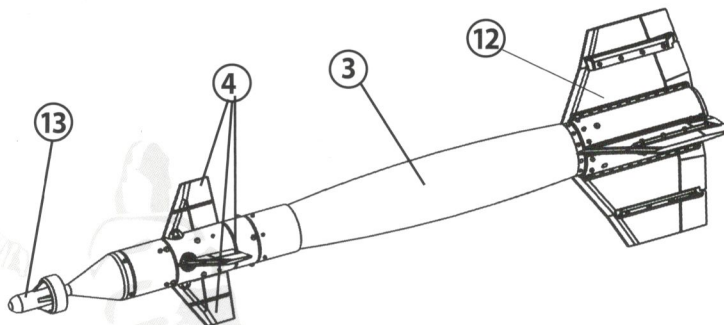
The kit includes pre-cut masking, which will help help you paint the front and main wheels.

18**Canopy masking**

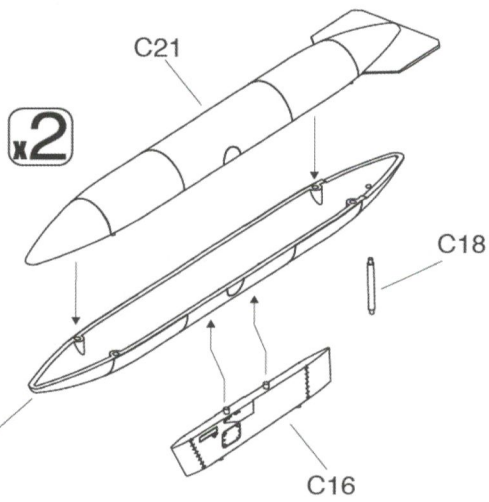
On the main canopy, first put masks 26 and 24, then 23 and 27 and finally 25.

**19**

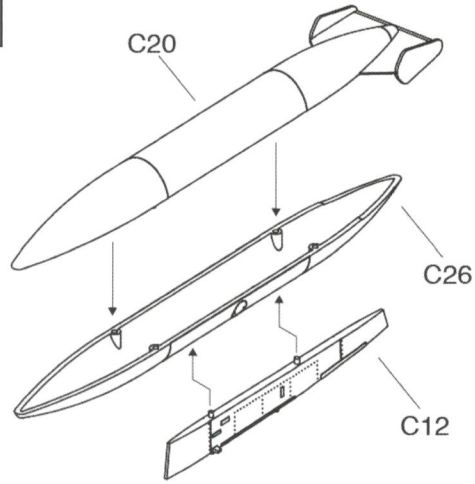
The IAF Kfir C7s had the capability to carry two GBU-12 Paveway I laser guided bombs loaded under the plane's intakes on unique pylons. The plastic kit provides two Griffin bombs, which were not in service with the IAF. We include the GBU-12 bombs in resin with relevant decals to apply. See the colors and decals guided provided in the kit.



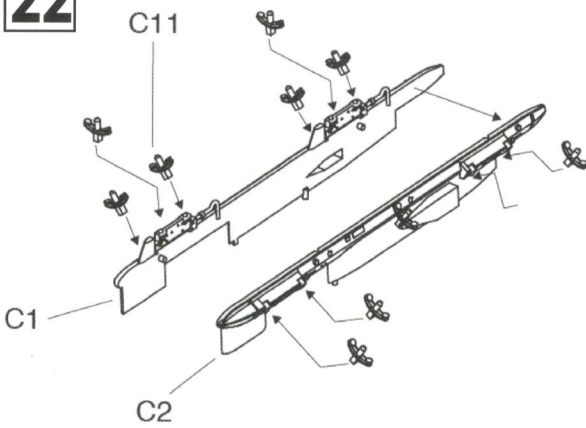
20



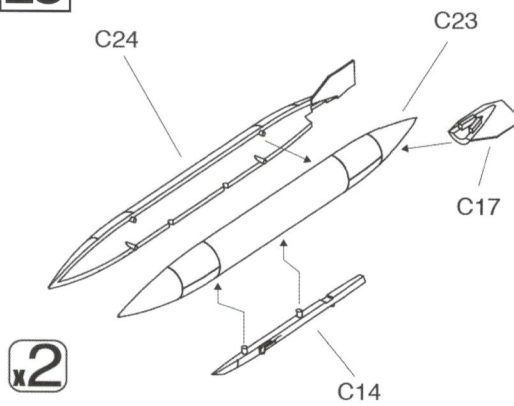
21



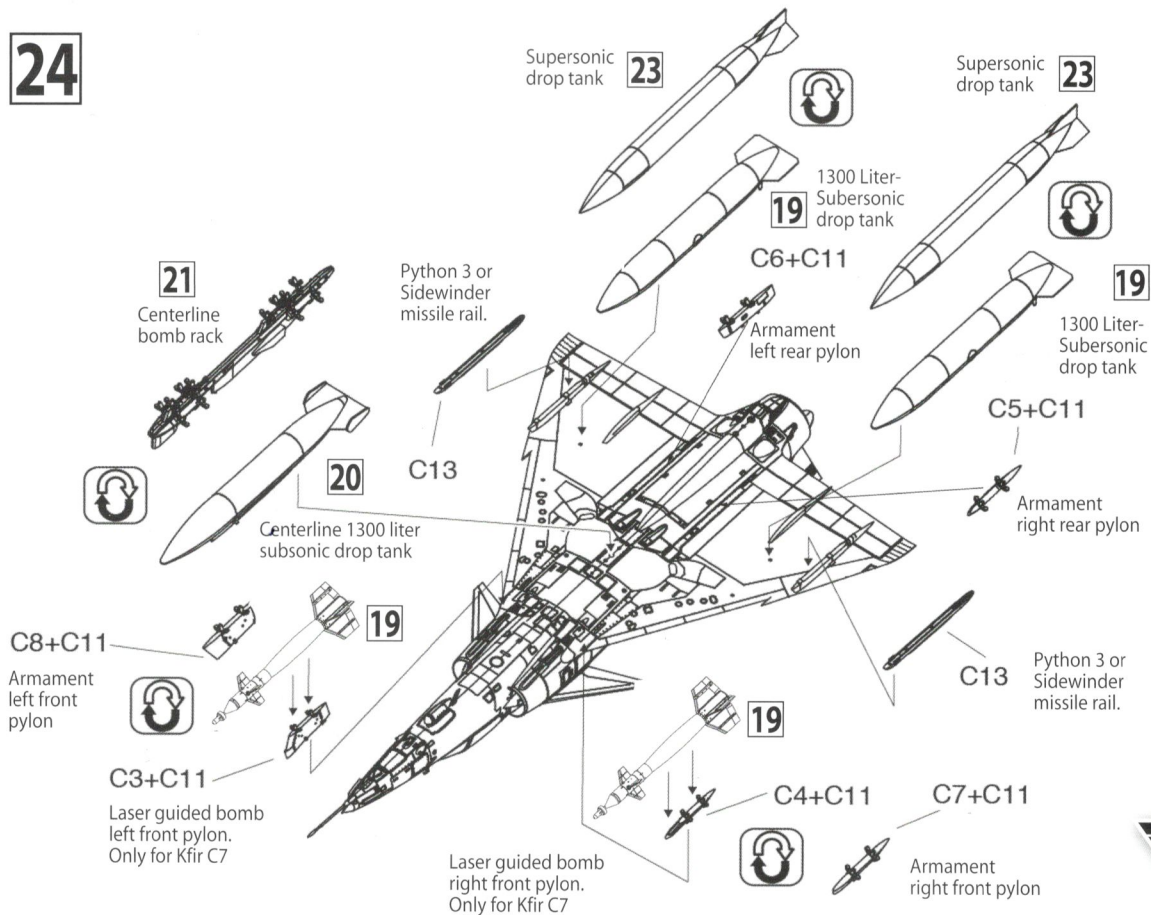
22



23

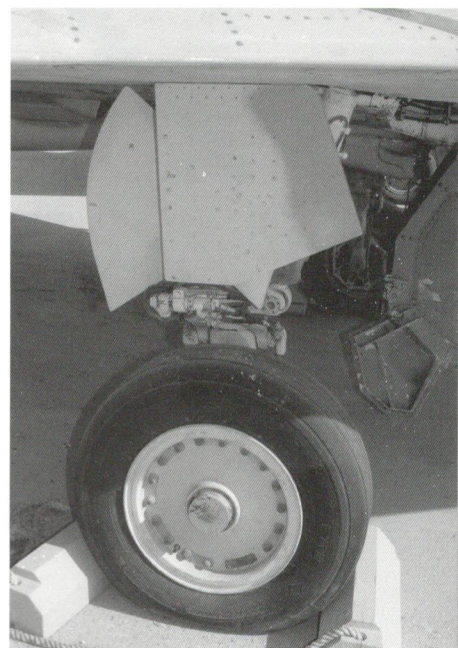
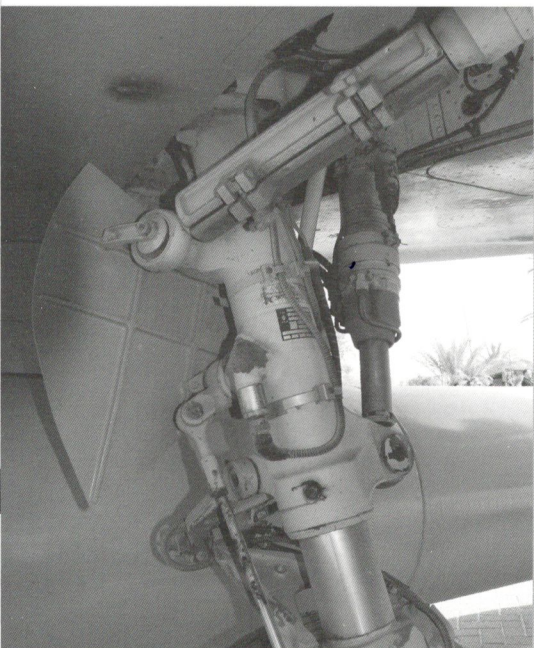
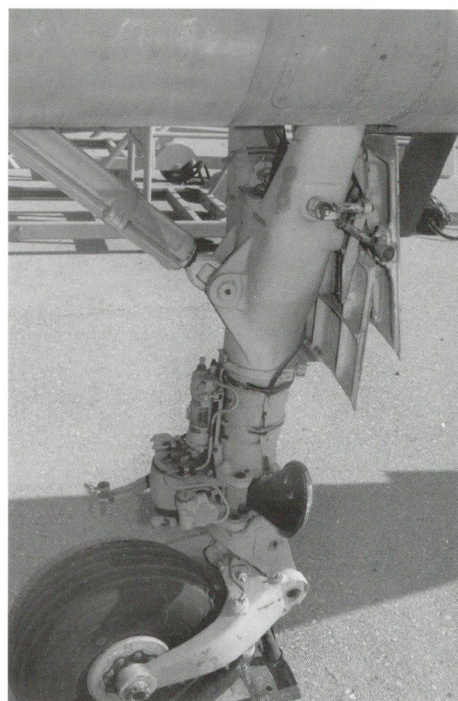
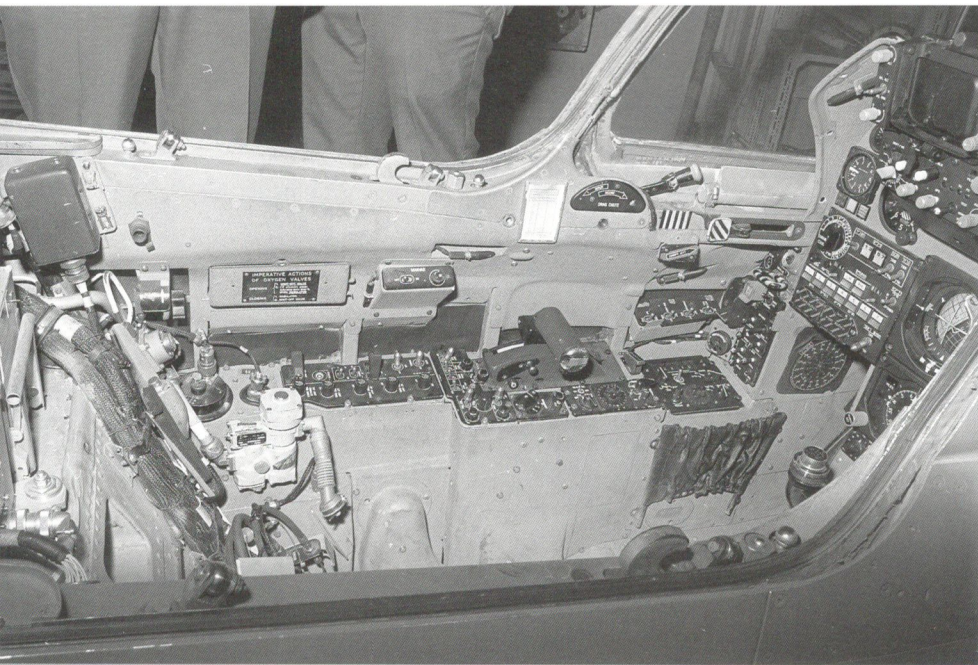


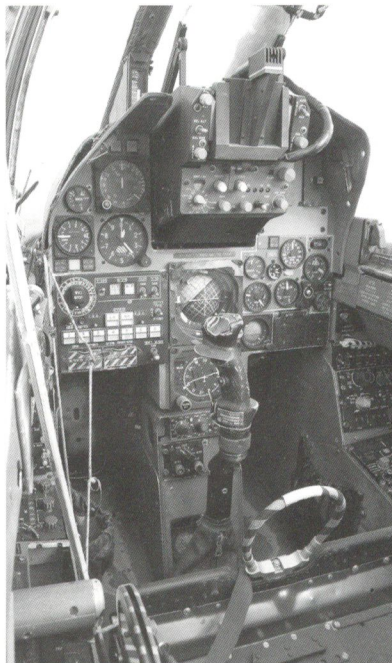
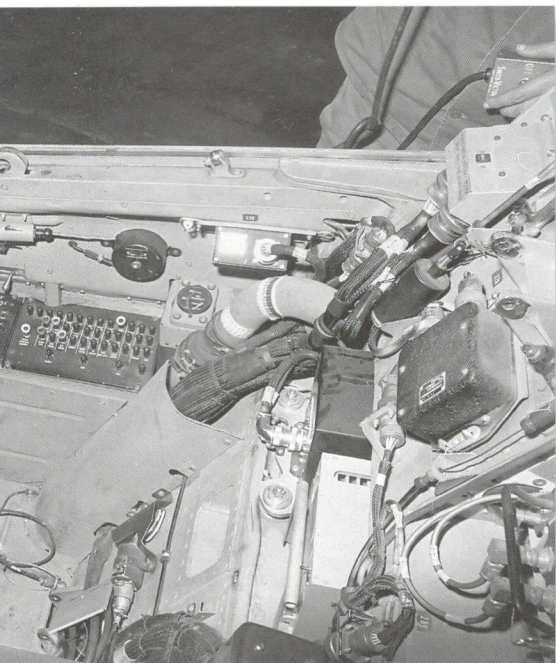
24



Note: The auxiliary fuel tanks in the kit are too small and in wrong proportions. Wingman Models is offering correct size fuel tanks and pylons to replace the faulty ones in the kit. Check our website for new releases: www.wingmanmodels.com



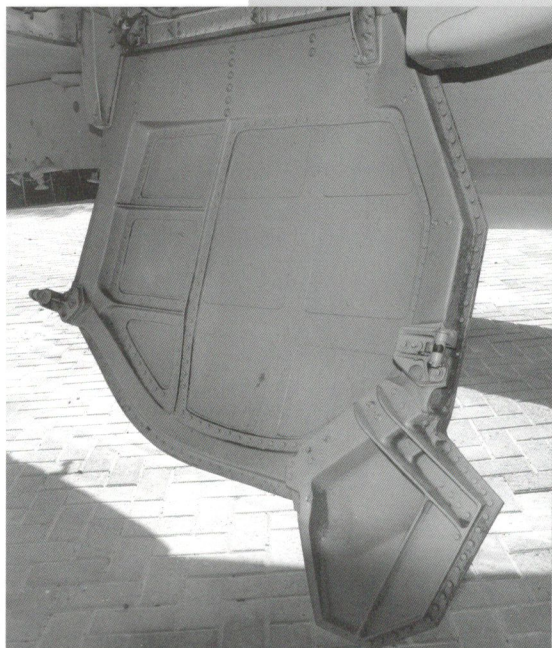
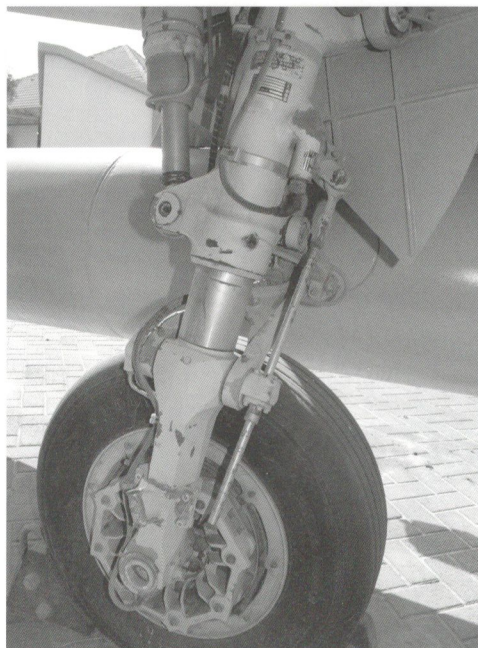
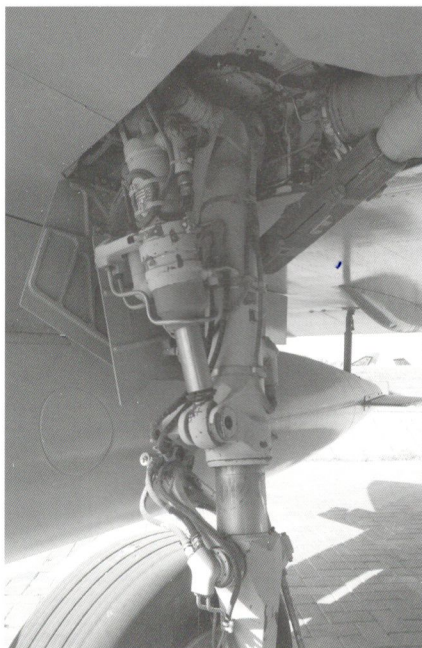
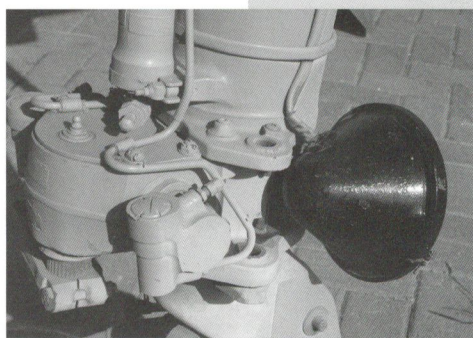
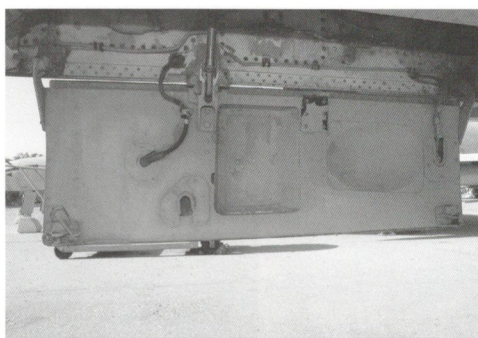
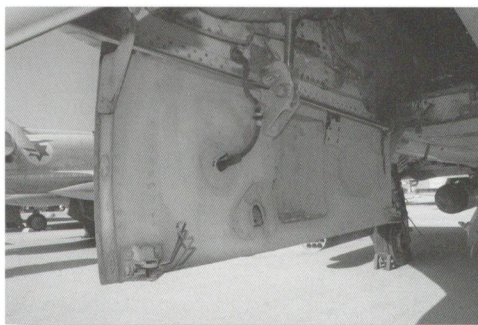


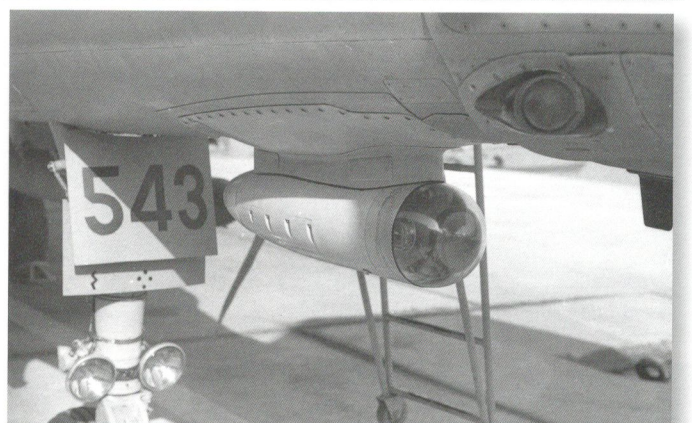
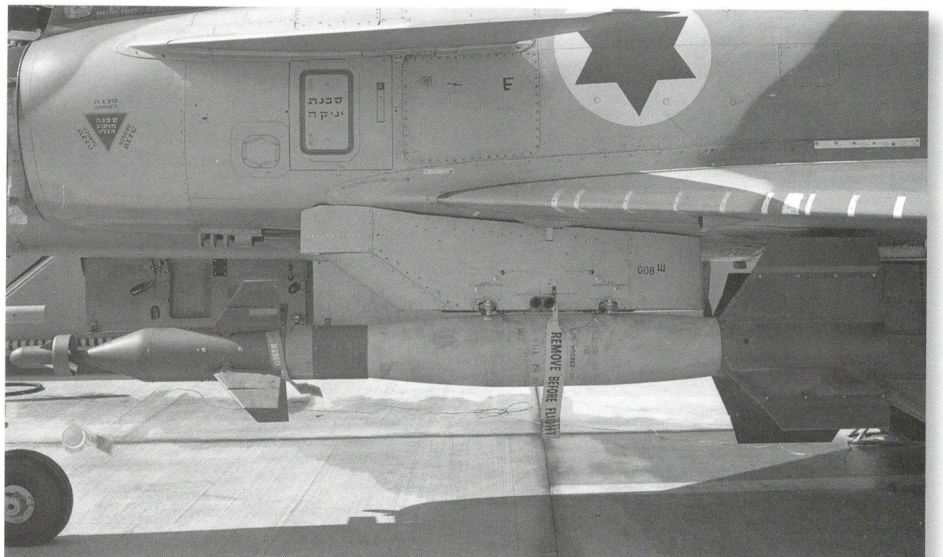
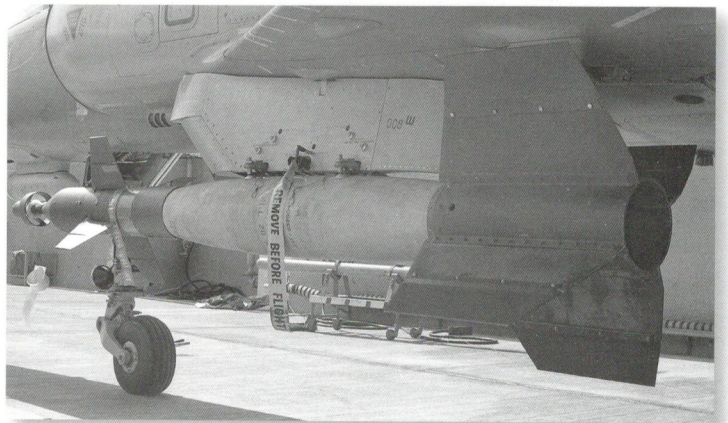
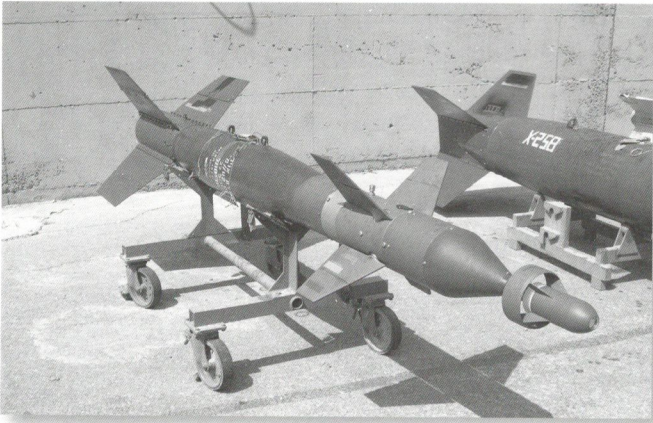


Kfir C2 instrument panel



Kfir C7 instrument panel





© All rights reserved to Wingman Models 2013



We are right beside you!

Wetterkreuz 13, 91058 Erlangen, Germany
www.wingmanmodels.com

Israeli AF KFIR C2/C7

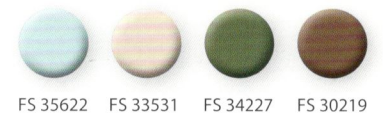
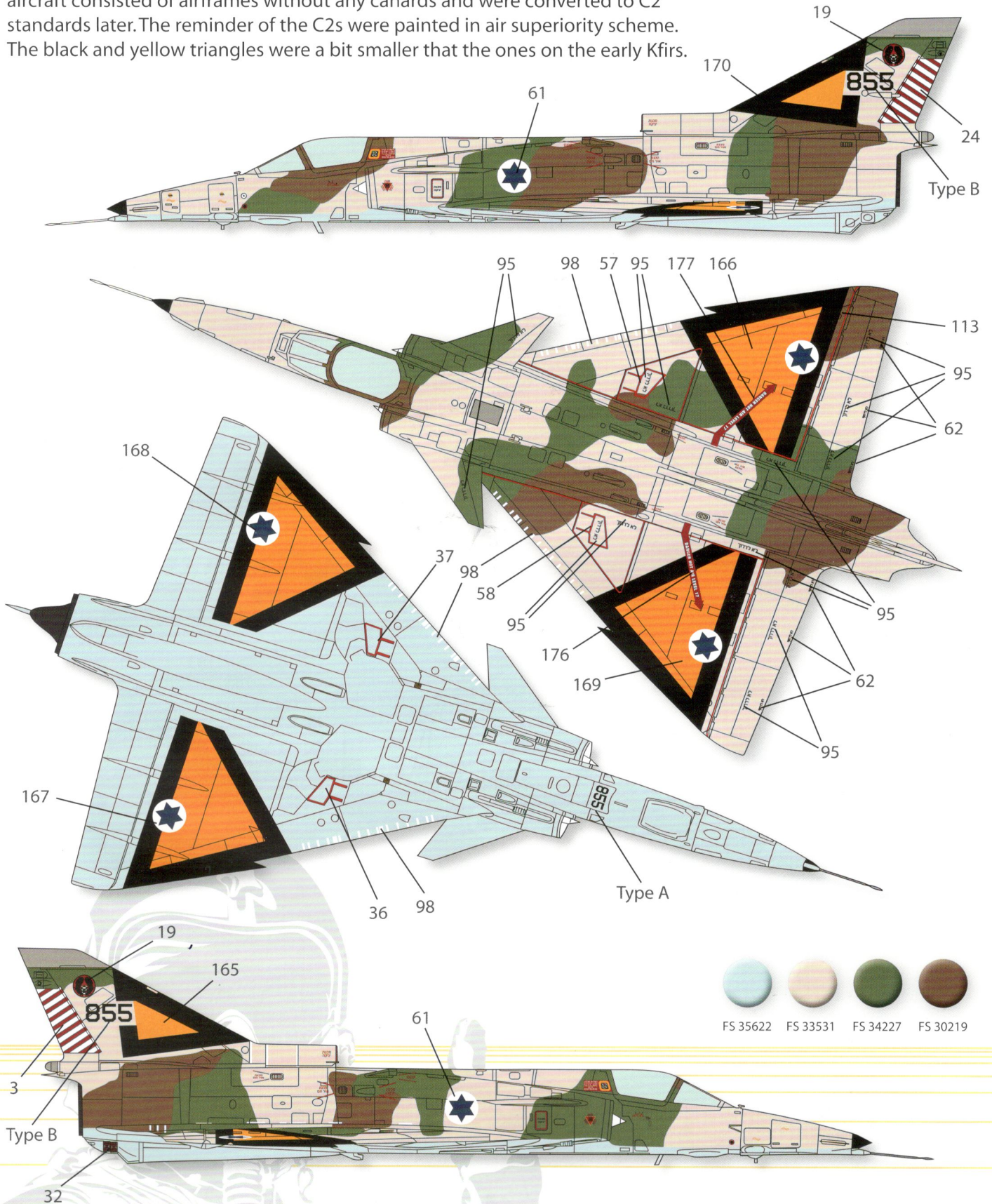
Colors and decals guide



We are right beside you!

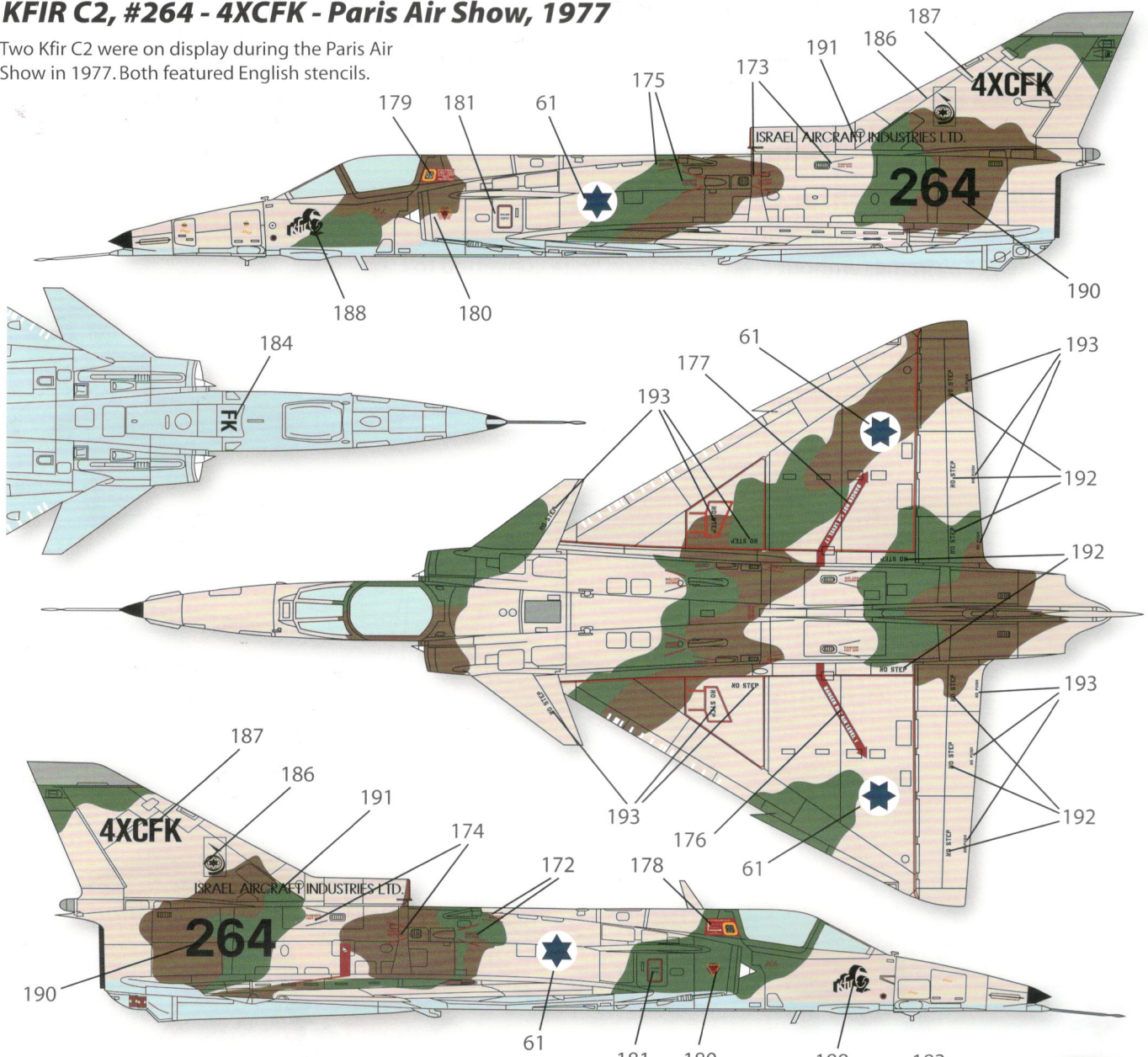
KFIR C2, #855, First Fighter squadron, 1978

Only handful of Kfir C2s were painted in the initial camouflage scheme. These aircraft consisted of airframes without any canards and were converted to C2 standards later. The remainder of the C2s were painted in air superiority scheme. The black and yellow triangles were a bit smaller than the ones on the early Kfirs.



KFIR C2, #264 - 4XCFK - Paris Air Show, 1977

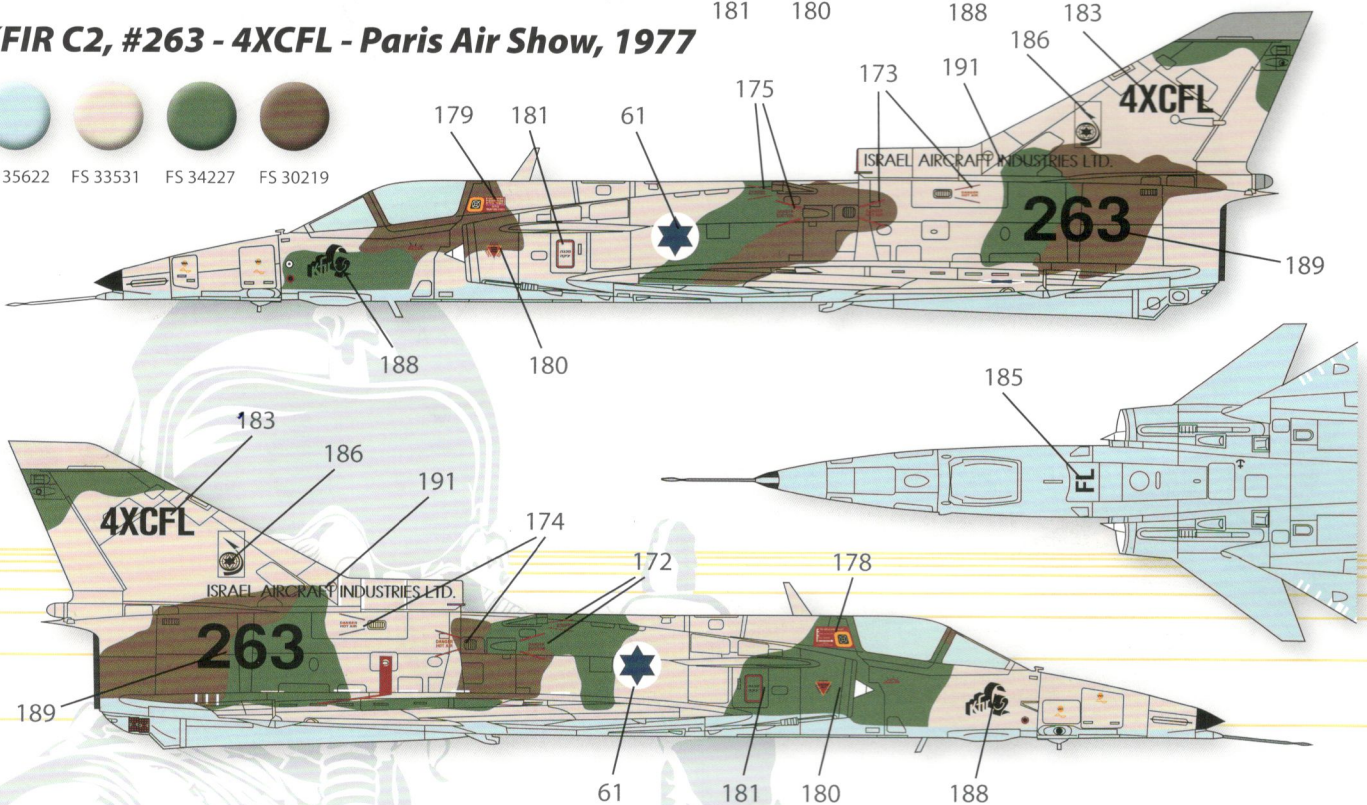
Two Kfir C2 were on display during the Paris Air Show in 1977. Both featured English stencils.



KFIR C2, #263 - 4XCFL - Paris Air Show, 1977

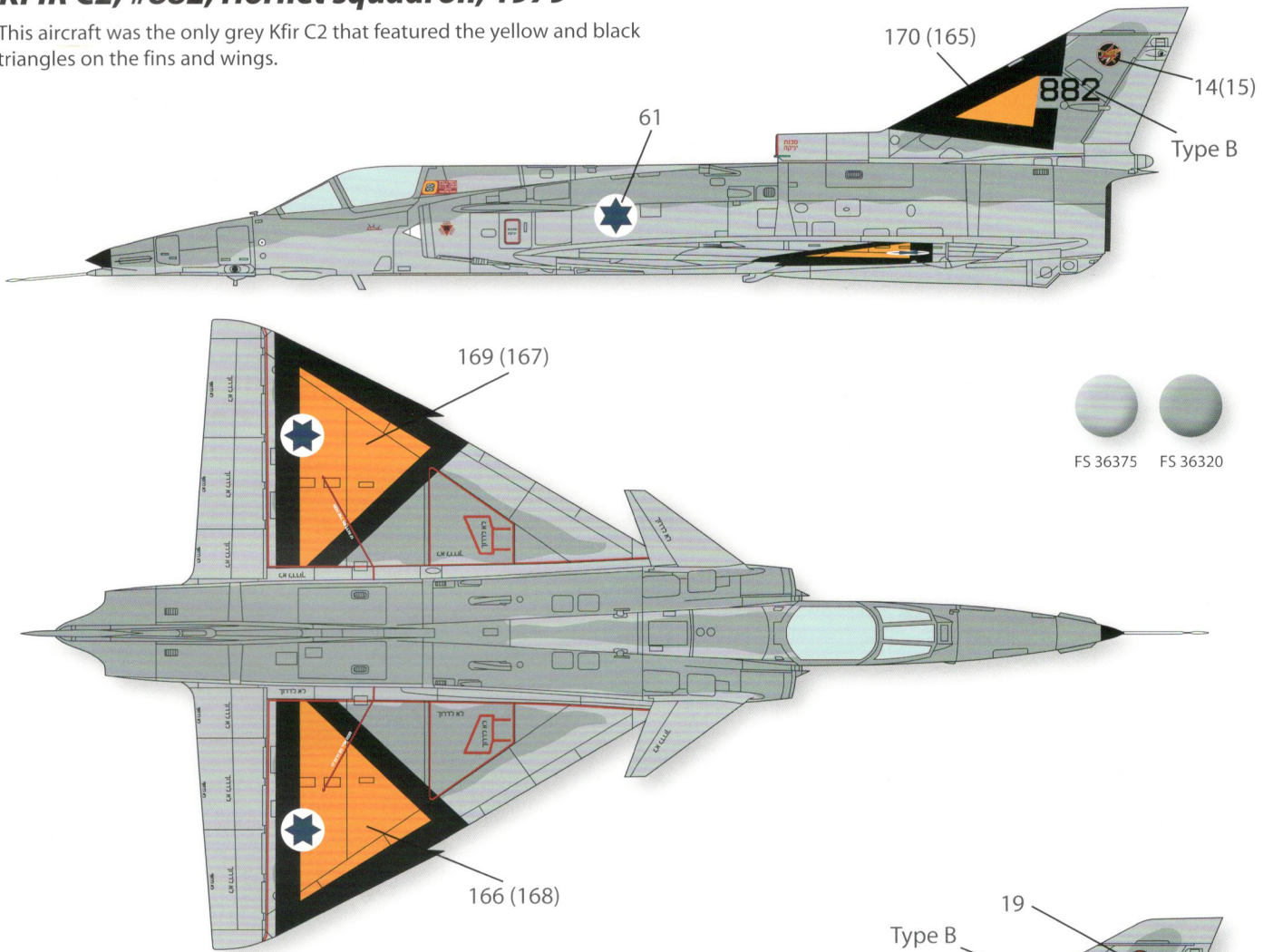


FS 35622 FS 33531 FS 34227 FS 30219

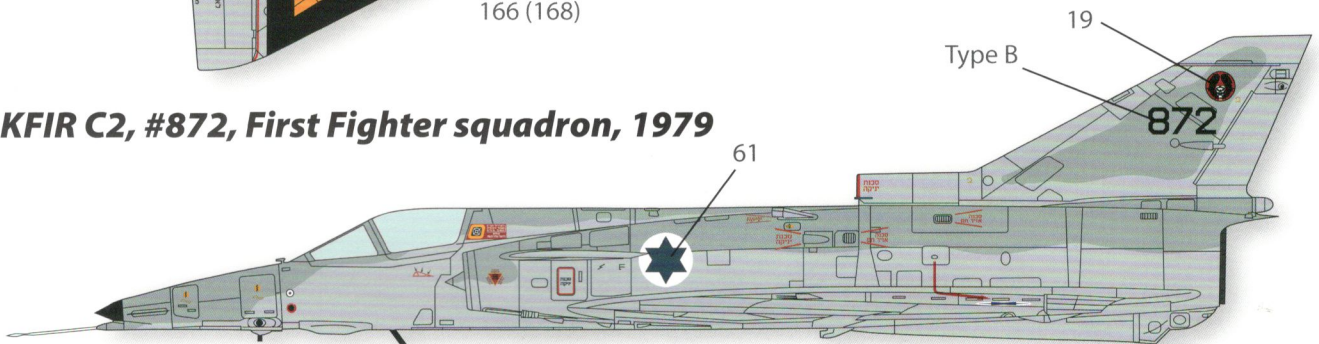


KFIR C2, #882, Hornet squadron, 1979

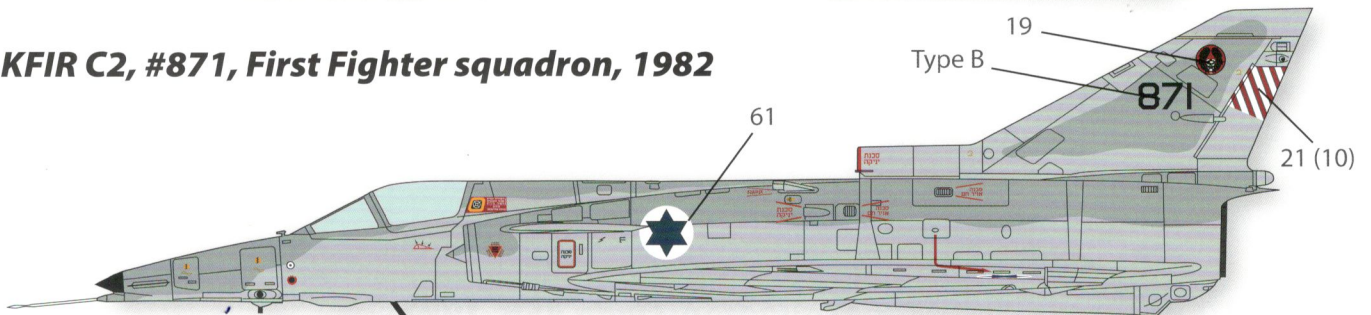
This aircraft was the only grey Kfir C2 that featured the yellow and black triangles on the fins and wings.



KFIR C2, #872, First Fighter squadron, 1979

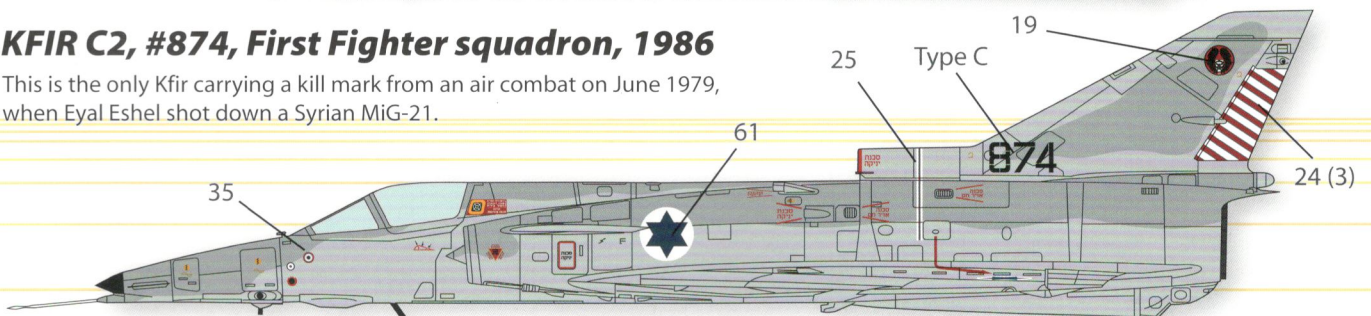


KFIR C2, #871, First Fighter squadron, 1982



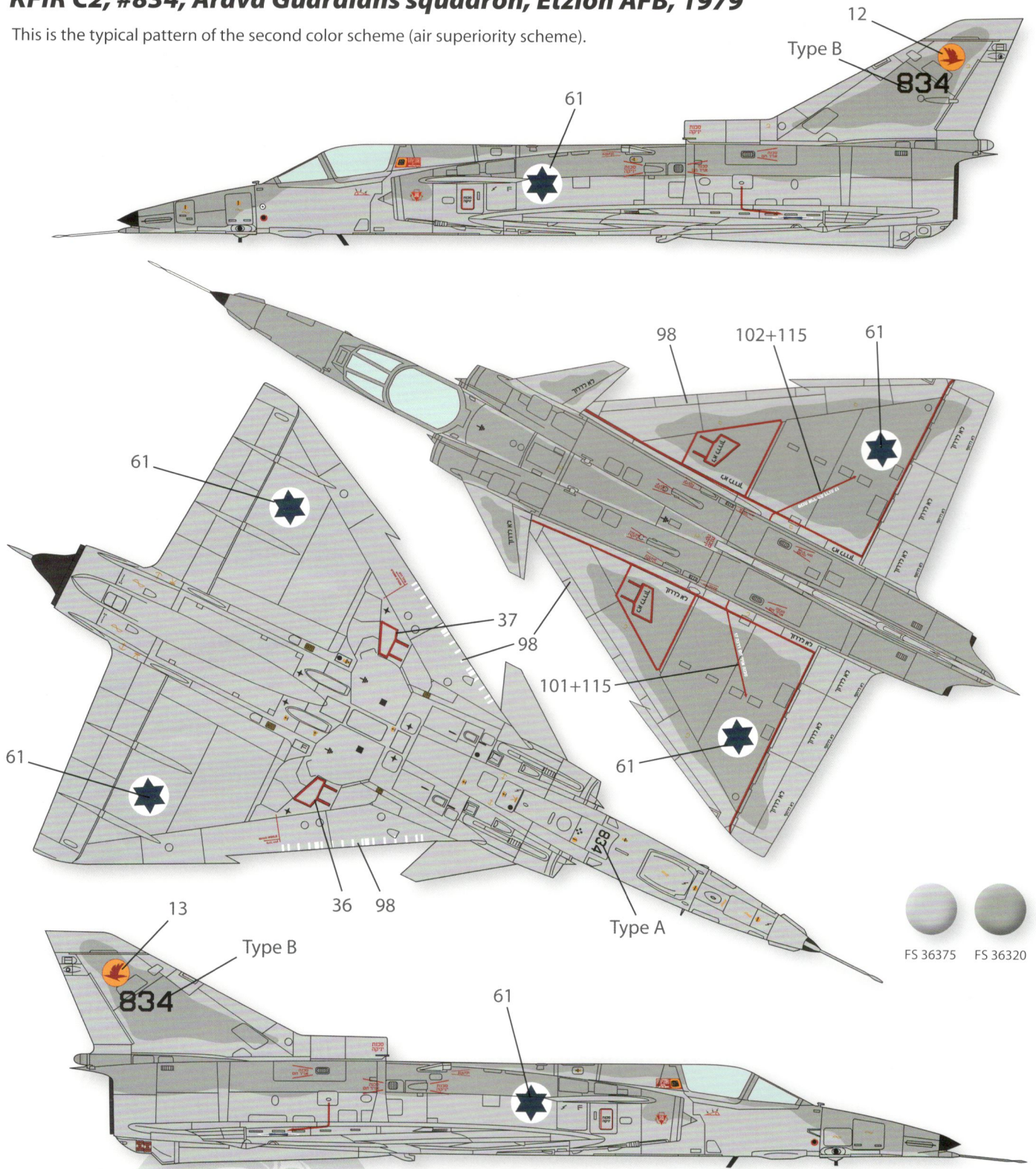
KFIR C2, #874, First Fighter squadron, 1986

This is the only Kfir carrying a kill mark from an air combat on June 1979, when Eyal Eshel shot down a Syrian MiG-21.

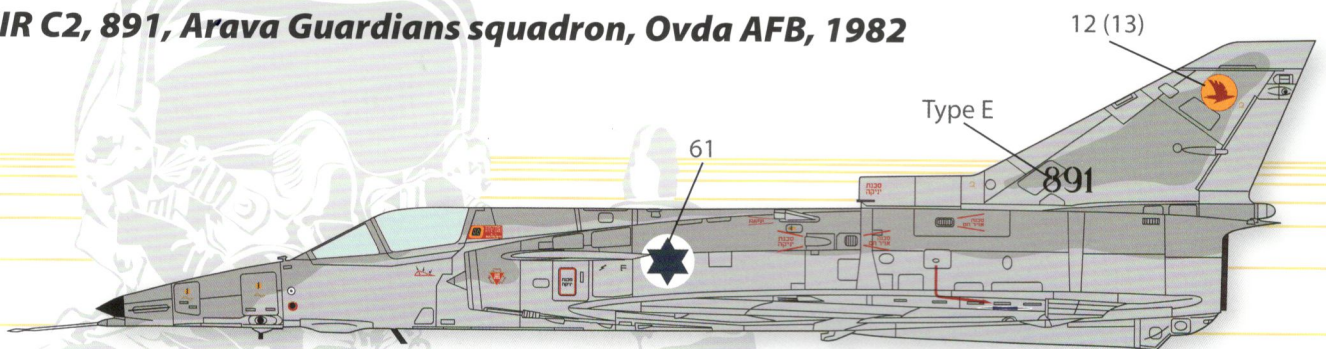


KFIR C2, #834, Arava Guardians squadron, Etzion AFB, 1979

This is the typical pattern of the second color scheme (air superiority scheme).

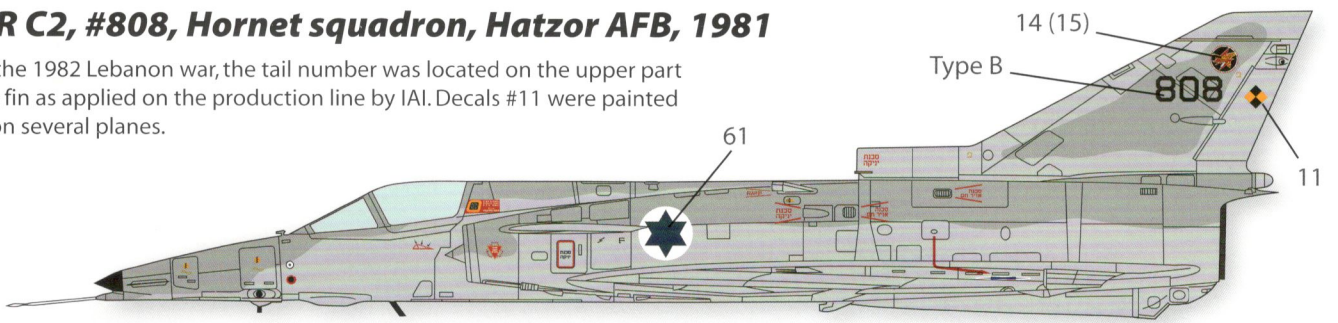


KFIR C2, 891, Arava Guardians squadron, Ovda AFB, 1982



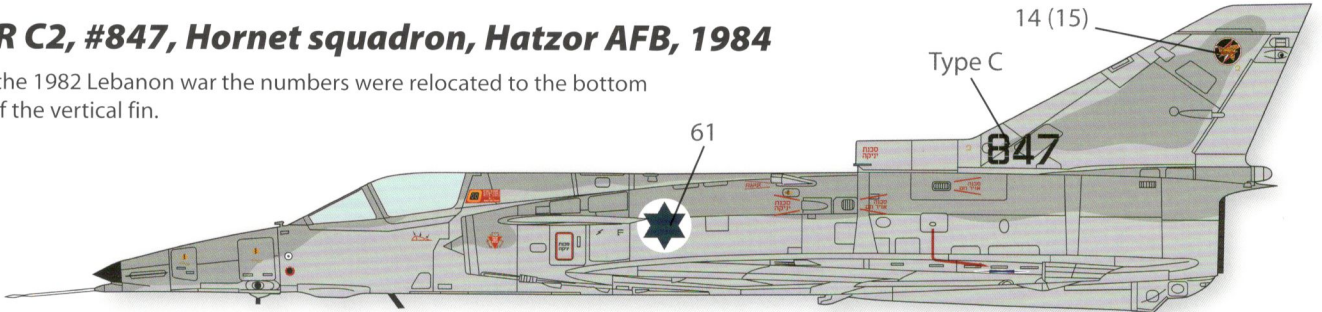
KFIR C2, #808, Hornet squadron, Hatzor AFB, 1981

Until the 1982 Lebanon war, the tail number was located on the upper part of the fin as applied on the production line by IAI. Decals #11 were painted only on several planes.

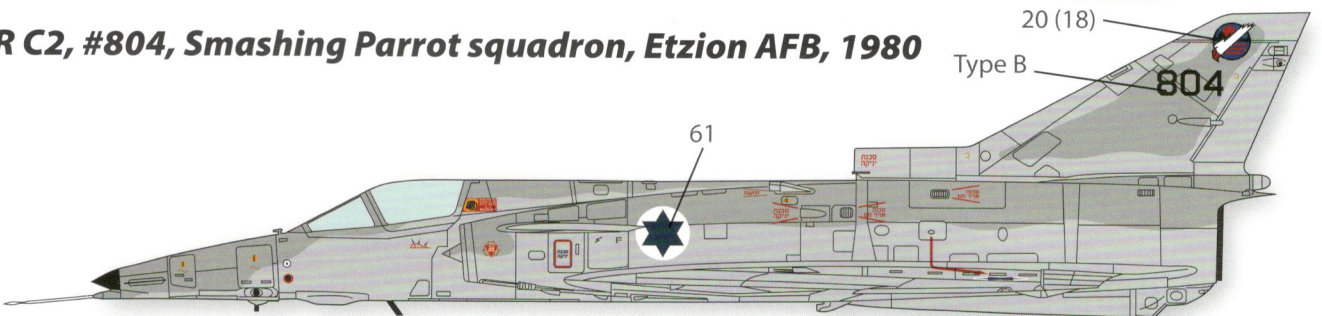


KFIR C2, #847, Hornet squadron, Hatzor AFB, 1984

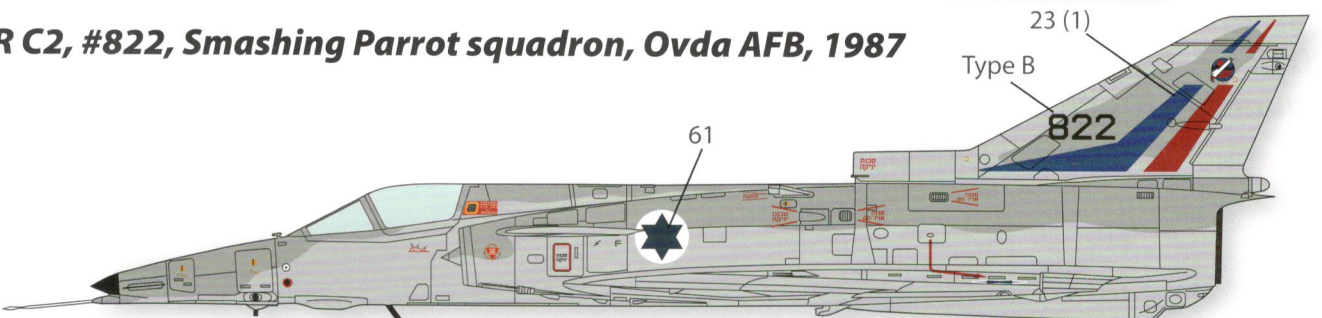
After the 1982 Lebanon war the numbers were relocated to the bottom part of the vertical fin.



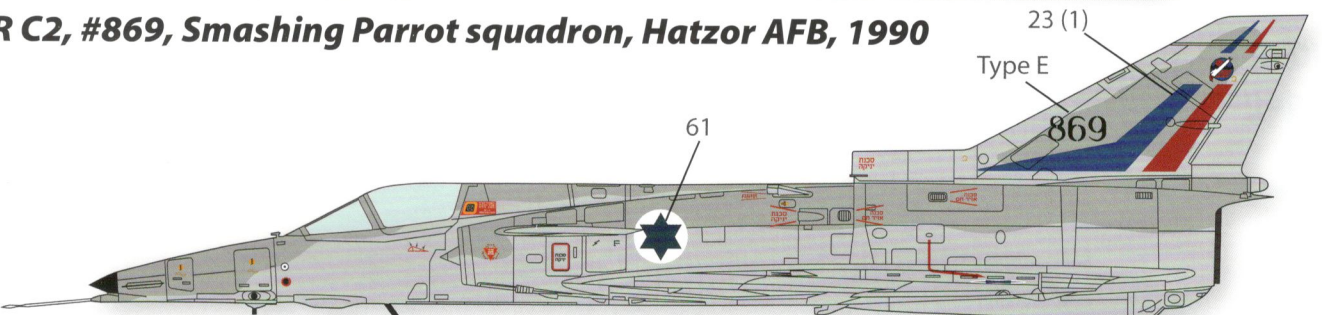
KFIR C2, #804, Smashing Parrot squadron, Etzion AFB, 1980



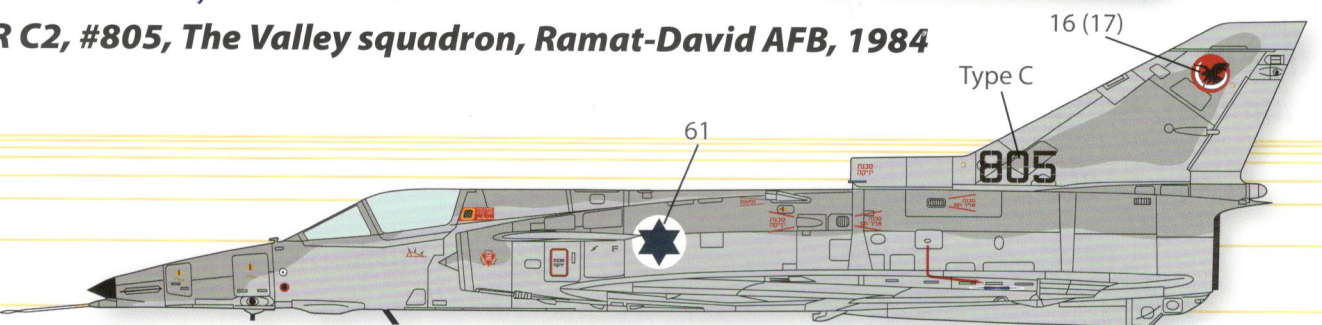
KFIR C2, #822, Smashing Parrot squadron, Ovda AFB, 1987



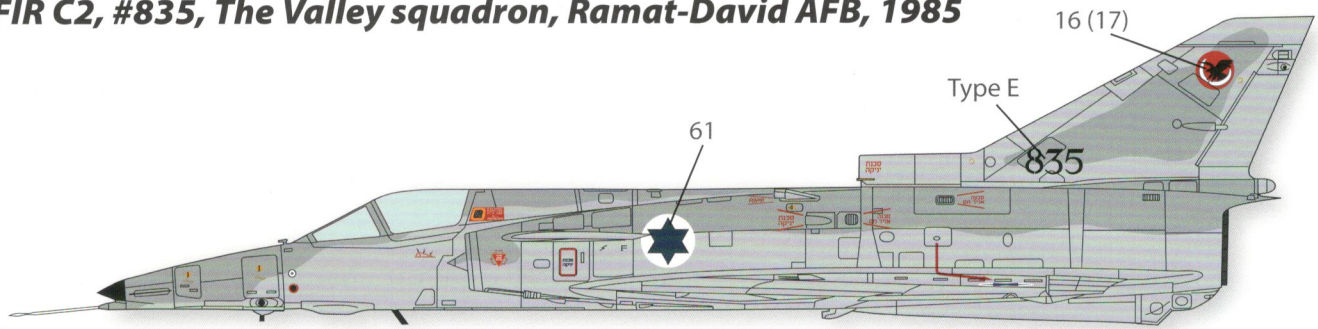
KFIR C2, #869, Smashing Parrot squadron, Hatzor AFB, 1990



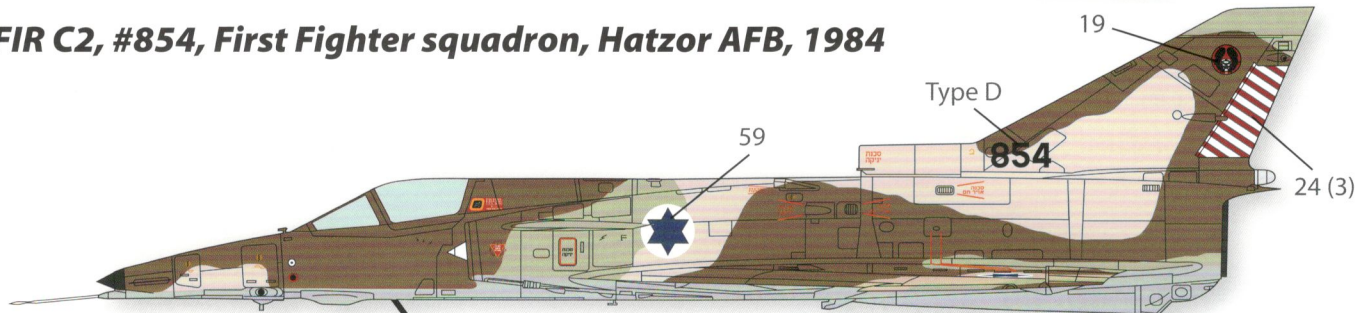
KFIR C2, #805, The Valley squadron, Ramat-David AFB, 1984



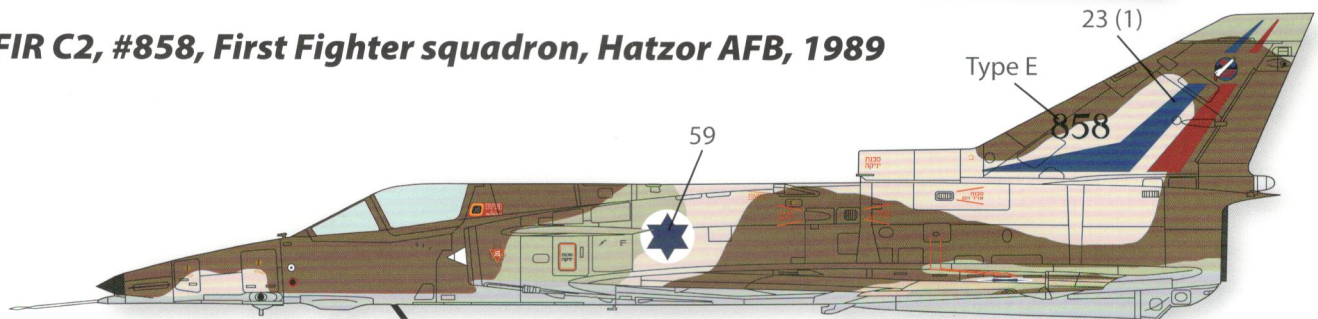
KFIR C2, #835, The Valley squadron, Ramat-David AFB, 1985



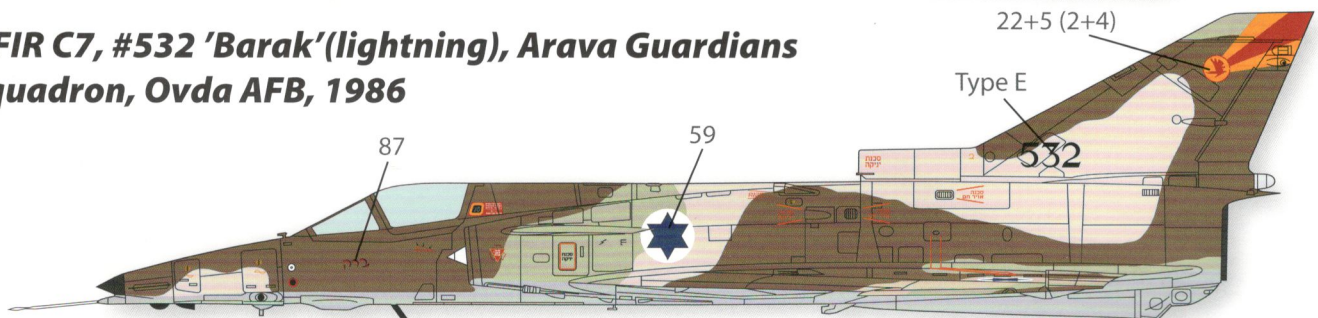
KFIR C2, #854, First Fighter squadron, Hatzor AFB, 1984



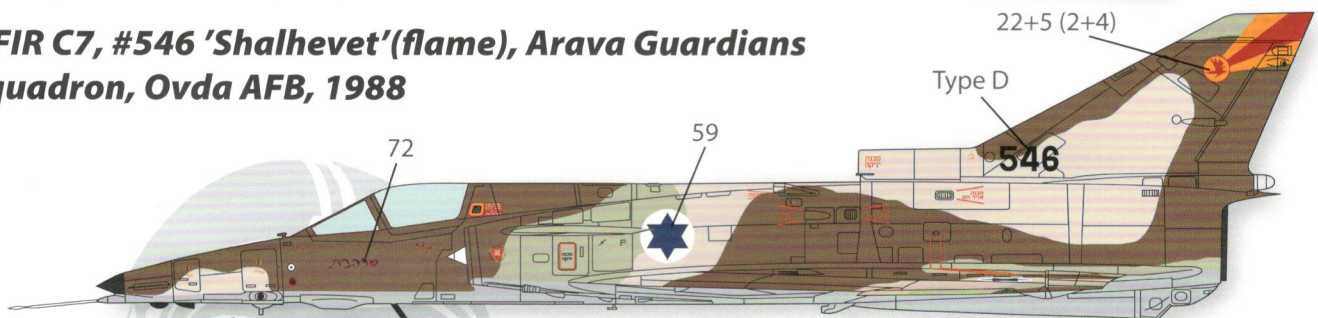
KFIR C2, #858, First Fighter squadron, Hatzor AFB, 1989



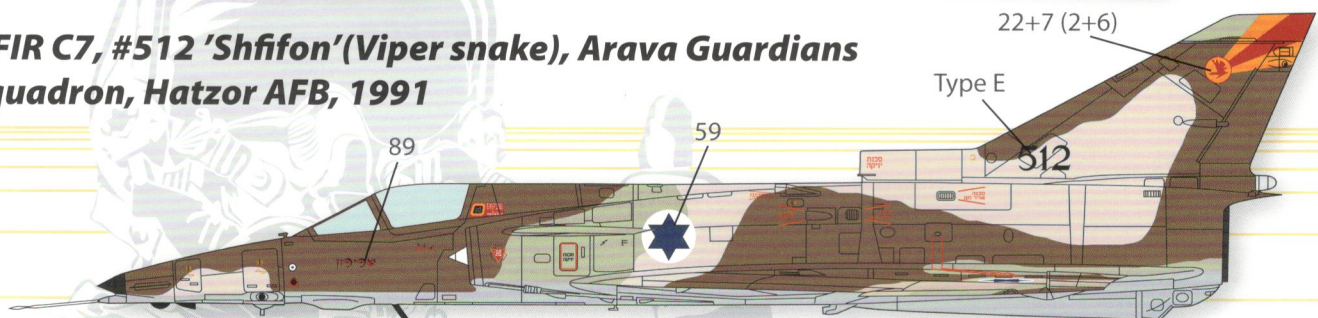
KFIR C7, #532 'Barak'(lightning), Arava Guardians squadron, Ovda AFB, 1986



KFIR C7, #546 'Shalhevet'(flame), Arava Guardians squadron, Ovda AFB, 1988

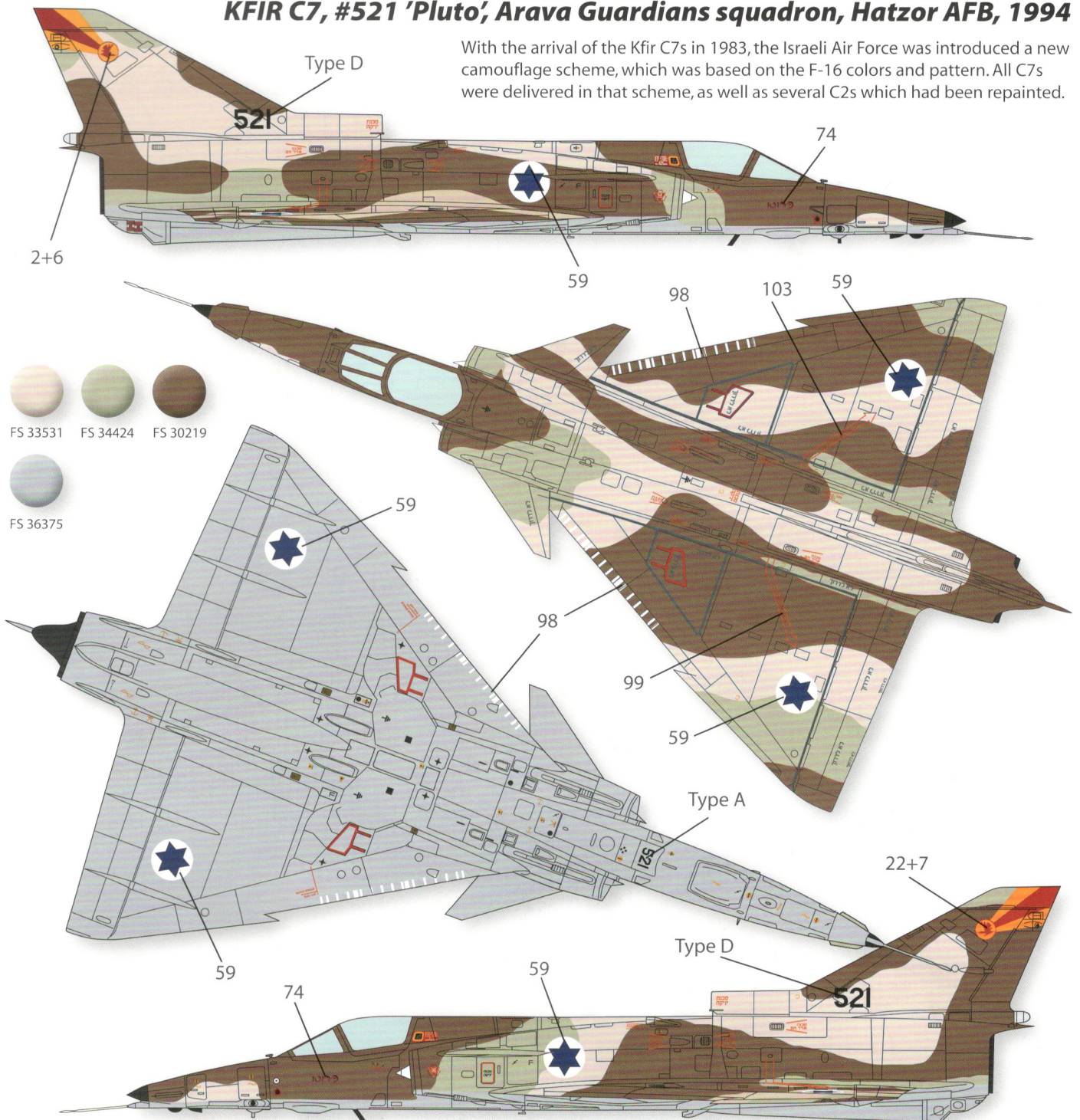


KFIR C7, #512 'Shfifon'(Viper snake), Arava Guardians squadron, Hatzor AFB, 1991



KFIR C7, #521 'Pluto', Arava Guardians squadron, Hatzor AFB, 1994

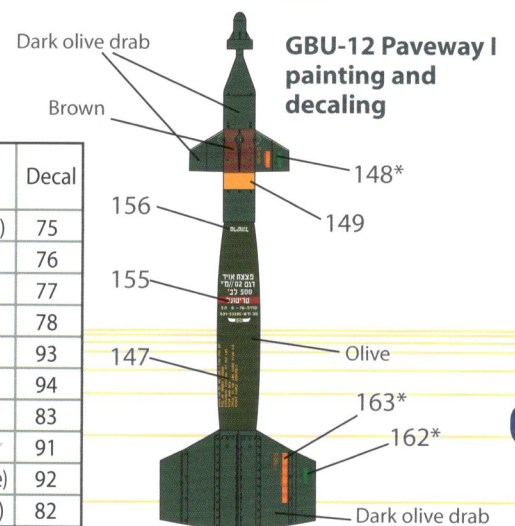
With the arrival of the Kfir C7s in 1983, the Israeli Air Force was introduced a new camouflage scheme, which was based on the F-16 colors and pattern. All C7s were delivered in that scheme, as well as several C2s which had been repainted.



This the complete list of all the names painted on the Kfir C7s.

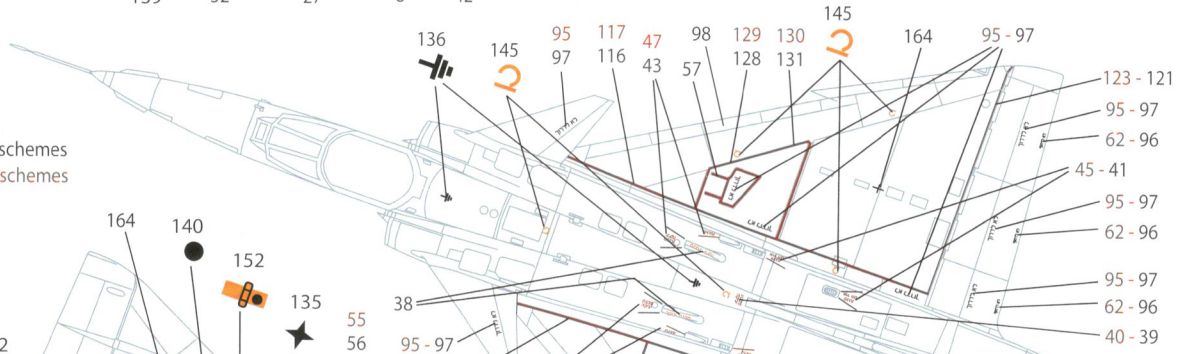
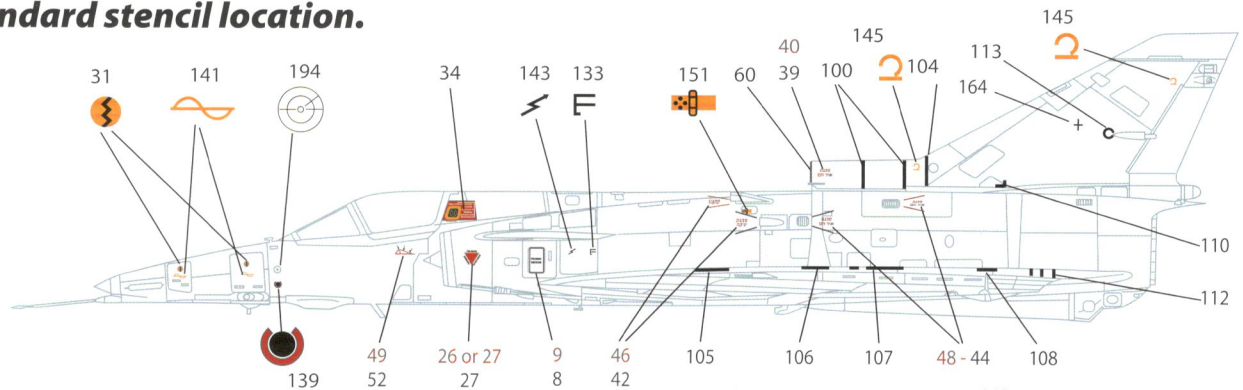
A/C Code	Hebrew name	Decal	A/C Code	Hebrew name	Decal	A/C Code	Hebrew name	Decal
561	Sa'har (Moon)	86	551	Etzion (AF Base)	65	519	Yupiter (Jupiter)	75
532	Barak (Lightning)	87	557	Sufa (Storm)	66	561	Sa'ar (Gale)	76
543	Zohar (Glow)	88	539	Noga (Venus)	79	516	Rahat (??)	77
512	Shfifon (Snake)	89	565	Ra'am (Thunder)	68	537	Shavit (Comet)	78
555	Shabtay (Saturn)	90	559	Tornado	69	529	Orion	93
570	Vega	85	517	Otsma (Power)	70	547	Neptune	94
573	Sirius	84	530	Ma'adim (Mars)	71	549	Meteor	83
541	Zedek (Jupiter)	80	566	Shal'hevet (Flame)	72	514	Titan	91
546	Omega	63	526	Mercury	73	534	Horikan (Hurricane)	92
553	Venus	81	521	Pluto	74	523	Hama (Mercury)	82

Check your references to see which type of numbers to use on your specific chosen aircraft.

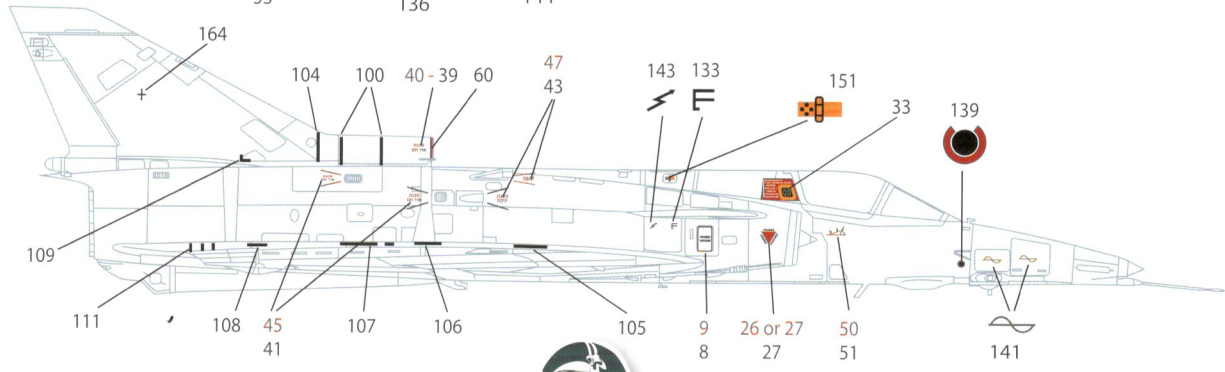
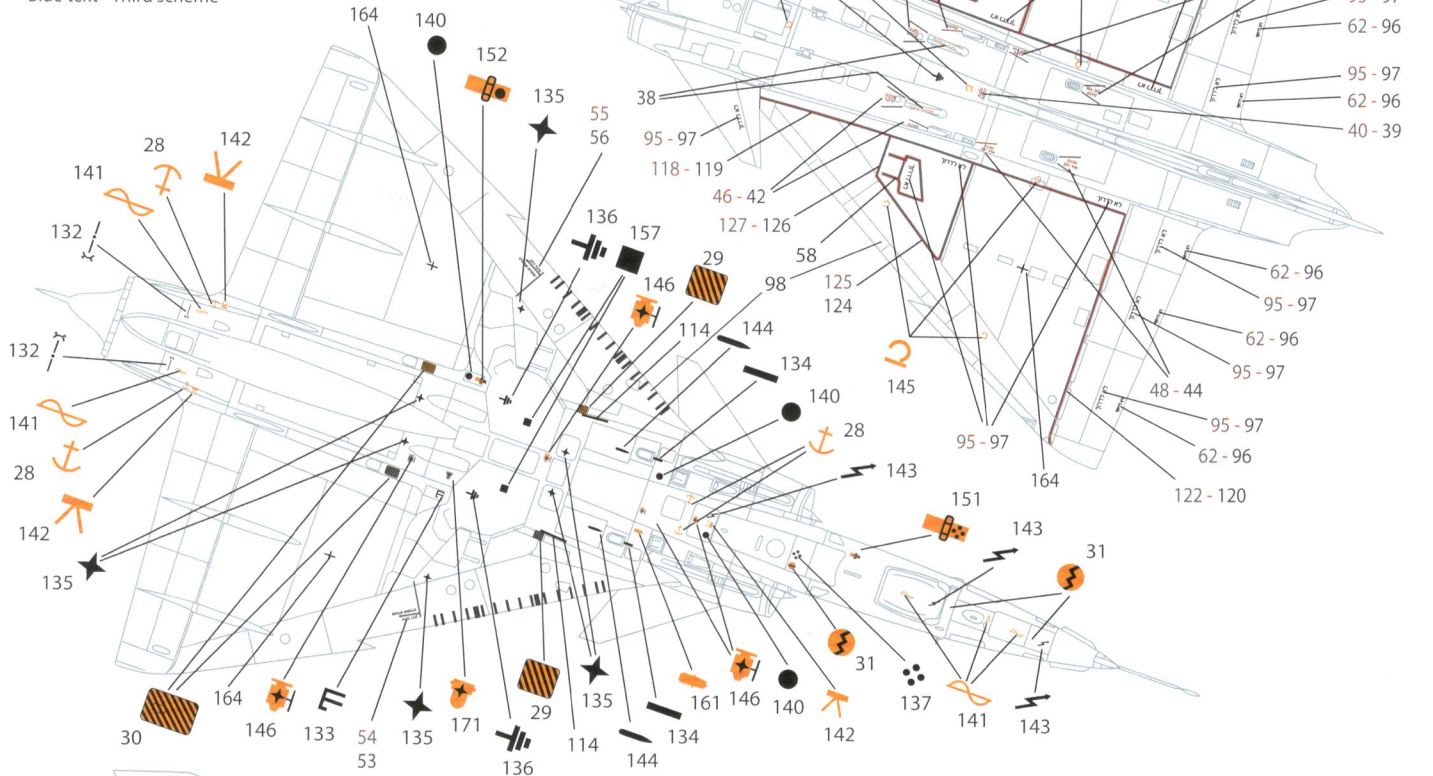


* On the left side of every fin.

Standard stencil location.



Black text - Common to all schemes
 Red text - First and second schemes
 Blue text - Third scheme



© All rights reserved to Wingman Models 2013



We are right beside you!

Wetterkreuz 13, 91058 Erlangen, Germany
www.wingmanmodels.com