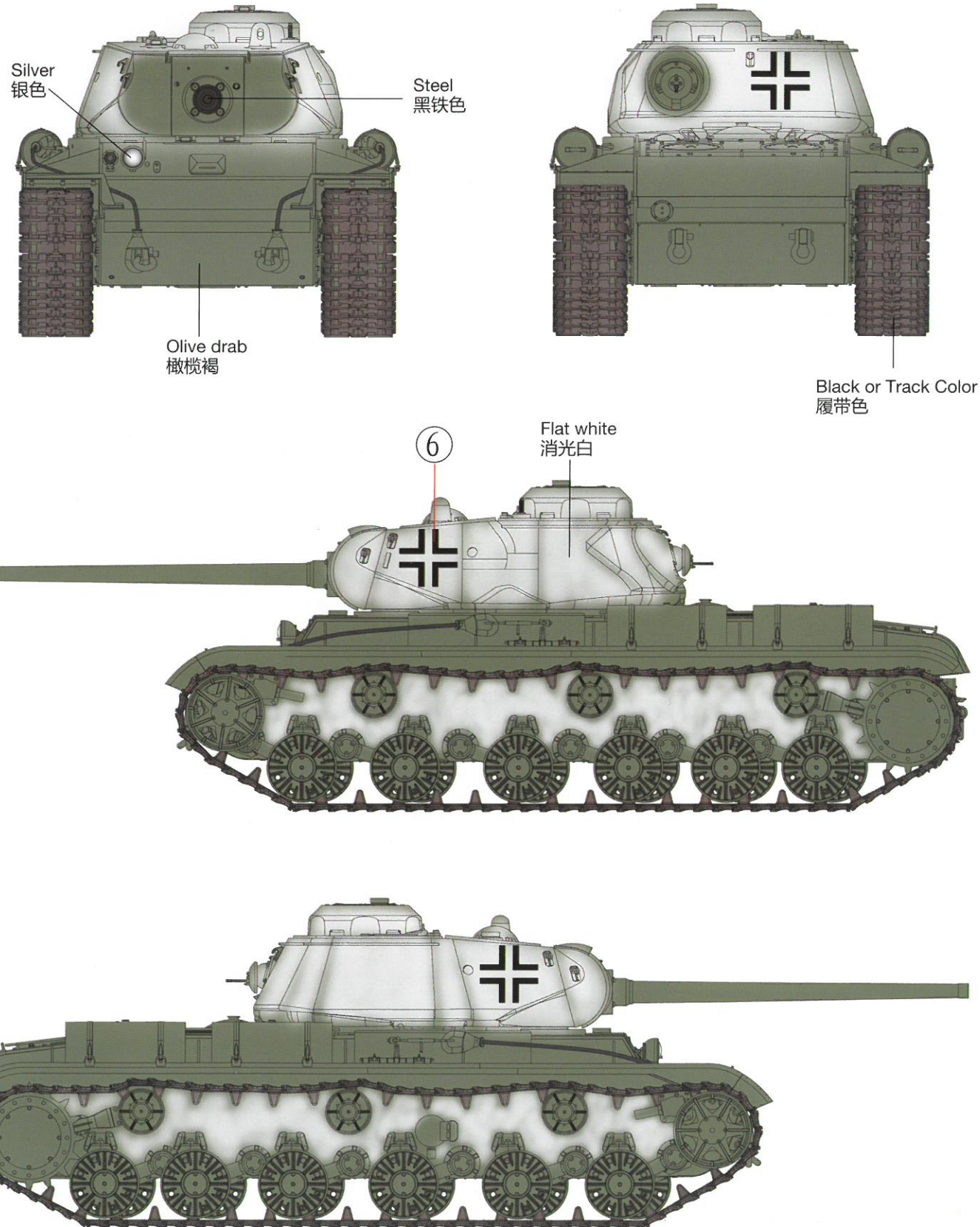


Option4: Captured & re-used by German Army (Unit Unknown), Russian Front , 1944.
1944年在俄国战线遭德军俘获再使用之车辆。



Kit No. CB-35110
Russian Heavy Tank KV-85
俄军重坦克 KV-85
1/35 SCALE



In the late 1930's the Red Army was looking for a new heavy tank to complement the T-34 Medium Tank. The best pilot tank to emerge was a single turret variant of the SMK, which was named after Peoples Defense Commissioner, Kliment Voroshilov. The KV-1 was an outstanding design, and proved far superior to its German opponents in the battles of 1941-42. However by 1943 its 76mm gun was no match for the German Tiger and Panther. The final model of the KV series was the KV-85, which was based on the lighter KV-1C hull but had a new turret mounting the 85mm D-5T gun, similar to that carried in the SU-85 Tank Destroyer and T-34/85. Production of the KV-85 was from September 1943 to March 1944, but production was slow due to a shortage of the D-5T gun. Only 148 tanks were completed before being replaced by the IS-85 with redesigned hull. The IS was named after Iosef Stalin, as by 1943 Kliment Voroshilov had fallen from favor. However the IS was a progression of the KV series and not a new design. The KV-85 weighed 46 tons and was powered by a 600bhp V-12 diesel engine, giving a road speed of 40km/h. Armor was from 160mm maximum to 30mm minimum, road range was 250 kilometers.

Short Story by Phil Greenwood

In den späten 1930er Jahren suchte die rote Armee nach einer Ergänzung zu den mittleren T-34 Panzern. Dabei kam eine Version des SMK Panzers mit nur einem Turm heraus. Diesen benannte man nach Kliment Voroshilov, dem sowjetischen Volkskommissar für Verteidigung. Der KV-1 war eine auffallende Erscheinung und erwies sich als überlegener Gegner in den Gefechten 1941-42. Dennoch war ab 1943 seine 76mm Kanone unwirksam gegenüber den deutschen Tiger und Panther Panzern. Das letzte Modell der Reihe war der KV-85, welcher auf der leichteren KV-1C Wanne basierte und einen neuen Turm mit dem 85mm D-5T Geschütz hatte. Diese Waffe war der Bewaffnung der SU-85 und T-34/85 ähnlich. Produziert wurde der KV-85 von September 1943 bis März 1944. Die Stückzahl war wegen mangelnden D-5T Geschützen recht gering. Nur 148 Stück waren fertig, bevor der IS-85 mit verbesserter Wanne kam. Die Bezeichnung änderte sich, weil Voroshilov in Ungnade gefallen war. Trotzdem war der IS nur eine Weiterentwicklung und kein neues Design. Der KV-85 wog 46 Tonnen und schaffte mit einem 600PS V-12 Dieselmotor 40 km/h auf der Straße. Die Panzerung schwankte zwischen 160mm und 30mm. Die Reichweite betrug 250 km.

© Translation Michael Knoblich Academy Europe

在上世纪 30' 代末期苏联红军为了适应未来战争的需要, 急需一辆新设计的重型坦克以补 T-34 中型坦克之防护力不足。当时涌现最佳的试验坦克样办是双炮塔的 SMK(谢尔盖·米罗诺维奇·基洛夫) 重型坦克, 为了灵活性后经修改为单一炮塔并以当时的国防人民委员'库里曼特·伏罗希洛夫' 元帅命名, 名字缩写为 KV 重型坦克。在 1941-1942 年间 KV-1 确是一种卓越的设计和被证明是远优于它的对手德国的 III 号及 IV 号坦克。但这个优势却于 1943 年终止了, 由于它的 76 毫米炮是无法对付他的对手德国虎式和豹式坦克。KV 系列最后的型号是 KV-85, 该坦克是使用较轻的 KV-1C 车身, 但是装上最新的 85mm D-5T 炮塔, 相似于把 SU-85 反坦克自走炮或 T-34/85 的炮装在车上。KV-85 的生产是从 1943 年 9 月至 1944 年 3 月止, 停产原因是归结于 D-5T 炮的短缺。前后仅 148 辆这种坦克被完成, 之后它被重新设计的 IS-85 取代。由于'库里曼特·伏罗希洛夫' 元帅指挥不力而在 1943 年下台, 所以这款新坦克是以当时苏维埃的最高领袖'约瑟夫·斯大林' 命名。IS 系列相比 KV 系列也只是个过渡性质的设计而矣。KV-85 总重 46 吨, 而动力是由一台 600bhp V-2 柴油发动机所提供, 路上的最高速度是每小时 40 公里。装甲的厚度是从最大的 160 毫米到是小的 30 毫米, 巡航范围是 250 公里。

CORRECT METHOD FOR APPLYING DECALS : HINWEISE ZUM ANBRINGEN DER DECALS :
正确贴水贴纸的方法:

1. Clean model parts surface with wet cloth. Entsprechende Stellen am Modell feucht reinigen.
将需要贴水贴纸之部位表面擦干净。
2. Cut out the decal parts and dip them in cold water for 15 ~20 seconds. Decal ausschneiden und für 15-20 Sek. ins Wasser legen.
将所需之贴纸剪下泡在清水里约15至20秒。
3. Place it on correct position of the model kit. Decal an der richtigen Stelle auflegen.
将湿透之贴纸取出置放于正确之位置旁。
4. Slide off the decal from the base paper on to the model kit surface with a cotton stick. Decal mit Wattestäbchen festhalten und Papier darunter wegziehen.
用棉花棒轻推贴纸表面使其从底纸滑出至模型表面之正确位置。
5. When decal get dry then complete. Decal mit Papiertuch andrücken und trocknen.
待其自然干透后即完成。

ICON INSTRUCTION: 图标说明:

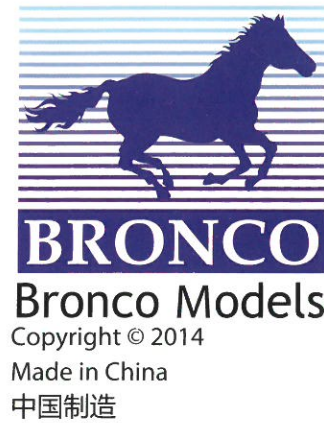
Open Hole Loch bohren 钻孔	Remove Abtrennen 切除	2 Sets needed Vorgang wiederholen 同样的制作二组	Bend Biegen 曲折	Optional Auswahl 可以选择采用
Apply Decal Decal anbringen 贴水贴纸	Instant Glue For Metal Sekundenkleber verwenden 瞬间接着剂,金属用	Fill Hole Verspachteln 把孔填平	Do not cement Nicht kleben 不用粘	

COLOR SUGGESTION: FARBTABELLE: 涂装指引:

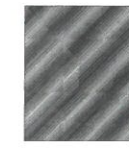
Color 涂料表	MR. Hobby	Hobby Color	Humbrol	Tamiya
Olive Drab Oliv Braun 橄榄褐	H-78	C-38	66	XF-62
Silver Silber 银色	H-8	C-8	11	X-11
Flat white Matt Weiss 消光白	H-11	C-62	34	XF-2
Steel Stahl 黑铁色	H-18	C-28	53	/
Flat Black Mattschwarz 消光黑	H-12	C-33	33	XF-1

READ BEFORE ASSEMBLING: VOR ZUSAMMENBAU LESEN: 组装必读:

- Carefully Study instruction before assembling. Anleitung studieren und verständlich machen. 组装前请阅读清楚制作指引。
- Keep plastic model glue and tools away from children. Kleber, Farben, Werkzeuge und Plastiktüten von Kindern fernhalten. 胶水,油漆及工具勿让小孩接触。
- Do not use cement or paint near open flame or sparks. Kleber/Farbe nicht in Nähe von offenen Flammen. 胶水及油漆勿接触火种。
- Do not work in closed room. Nur in ausreichend belüfteten Räumen arbeiten. 勿在密封地方制作模型。



Copper wire × 2
铜丝



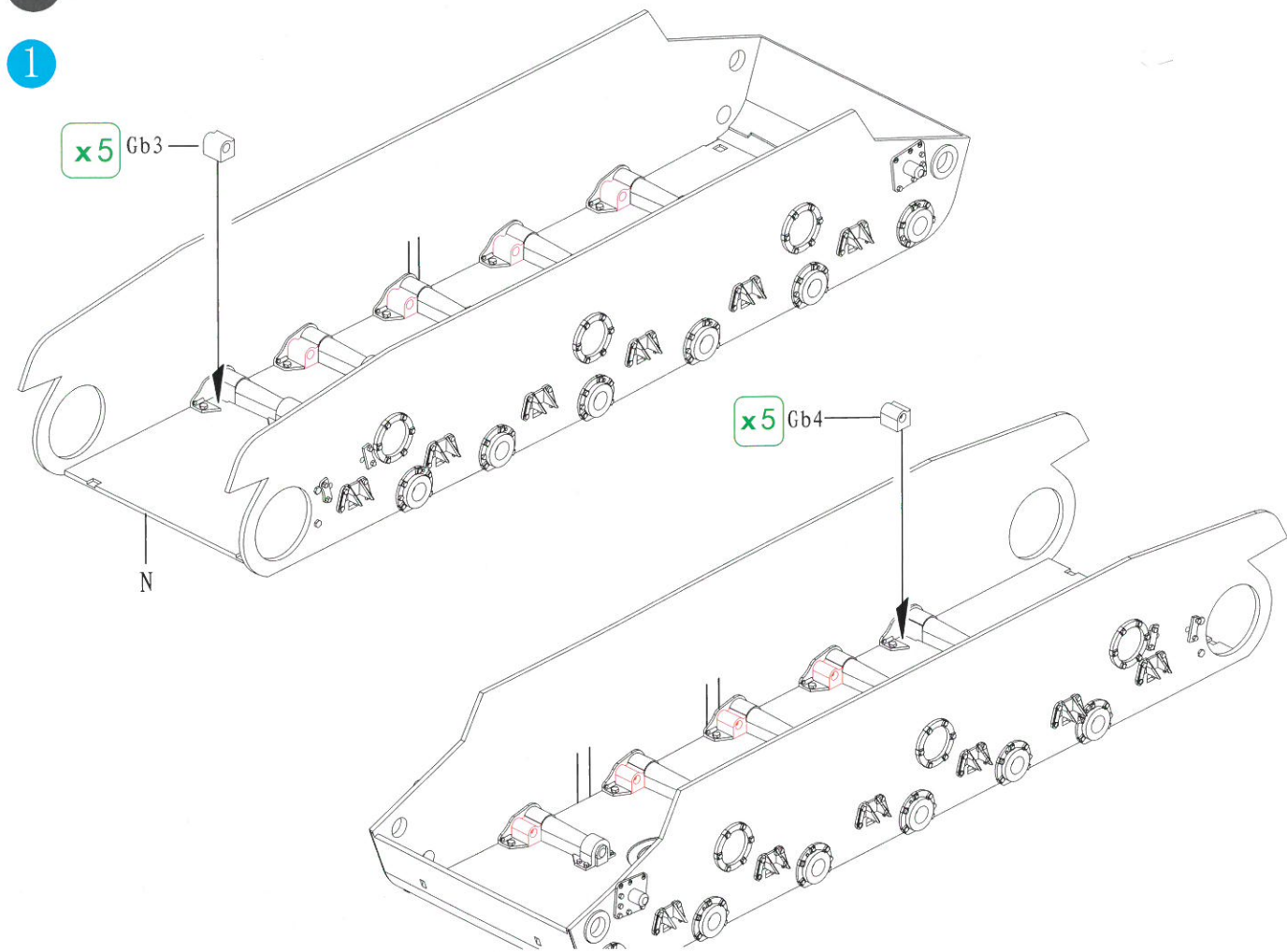
No use parts
不要部件

Parts list and assembly diagrams for the model kit. The list includes:

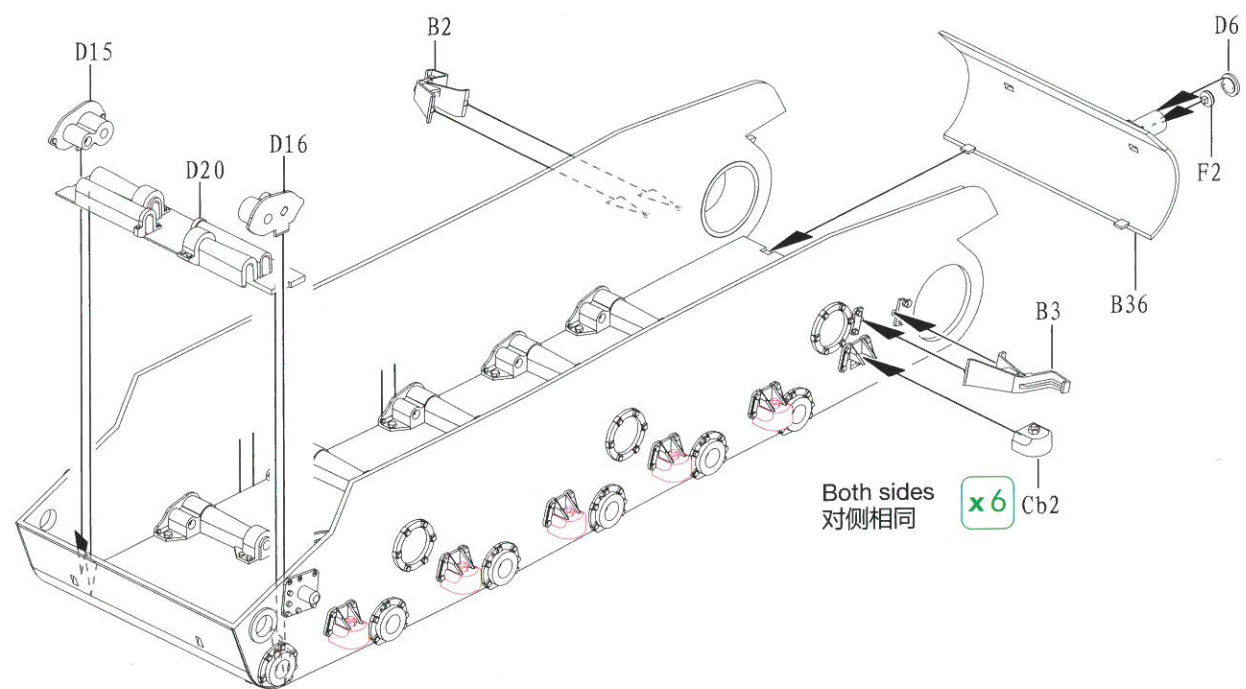
- (L) × 1
- (A) × 1
- (Kc) × 1
- (D) × 1
- (B) × 1
- (A) × 1
- (Ca) × 1
- (D) × 1
- (C) × 2
- (Cb) × 6
- (Cd) × 13
- (N) × 1
- (F) × 1
- (Ga) × 2
- (E) × 2
- (Gb) × 2
- (T) × 1
- (L) × 10
- (R) × 10
- DECAL × 1
- (P) × 1

Additional parts shown include a decal sheet with numbers 111222333444555666777888999000, 1112223330, 44455566677888999000, and a yellow plastic bag labeled CB35110.

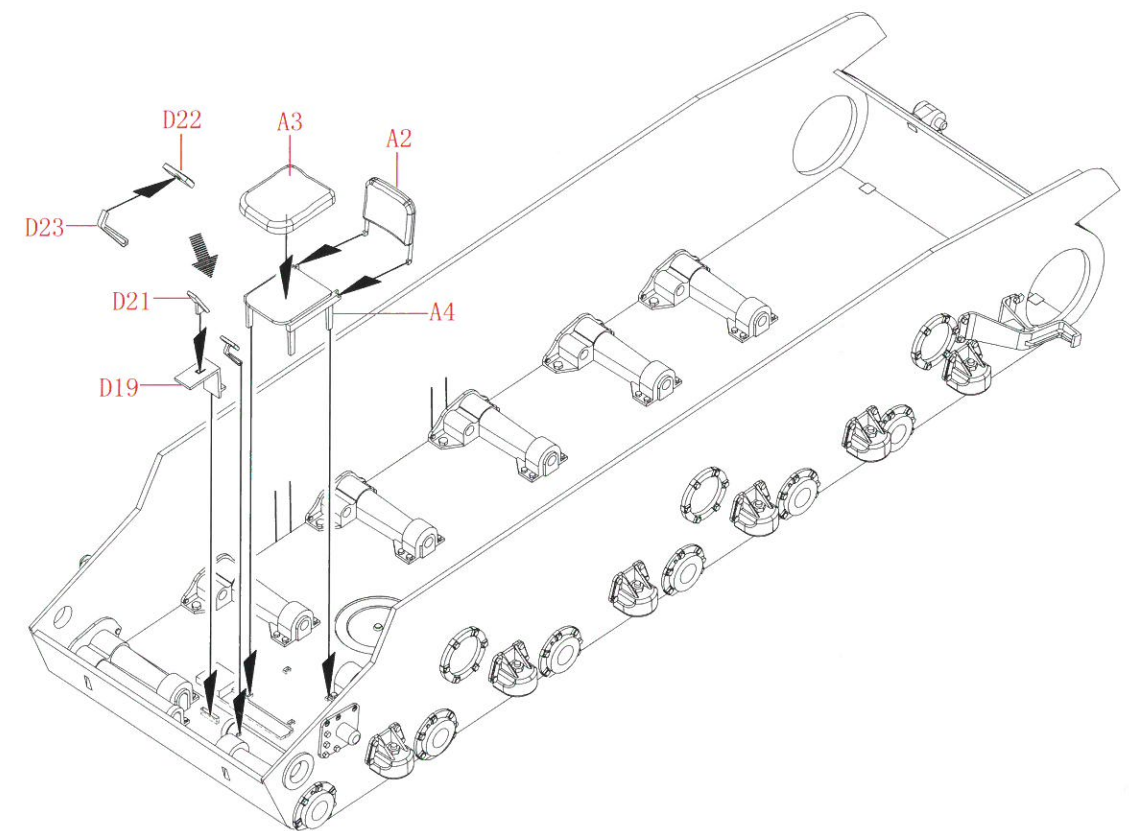
1



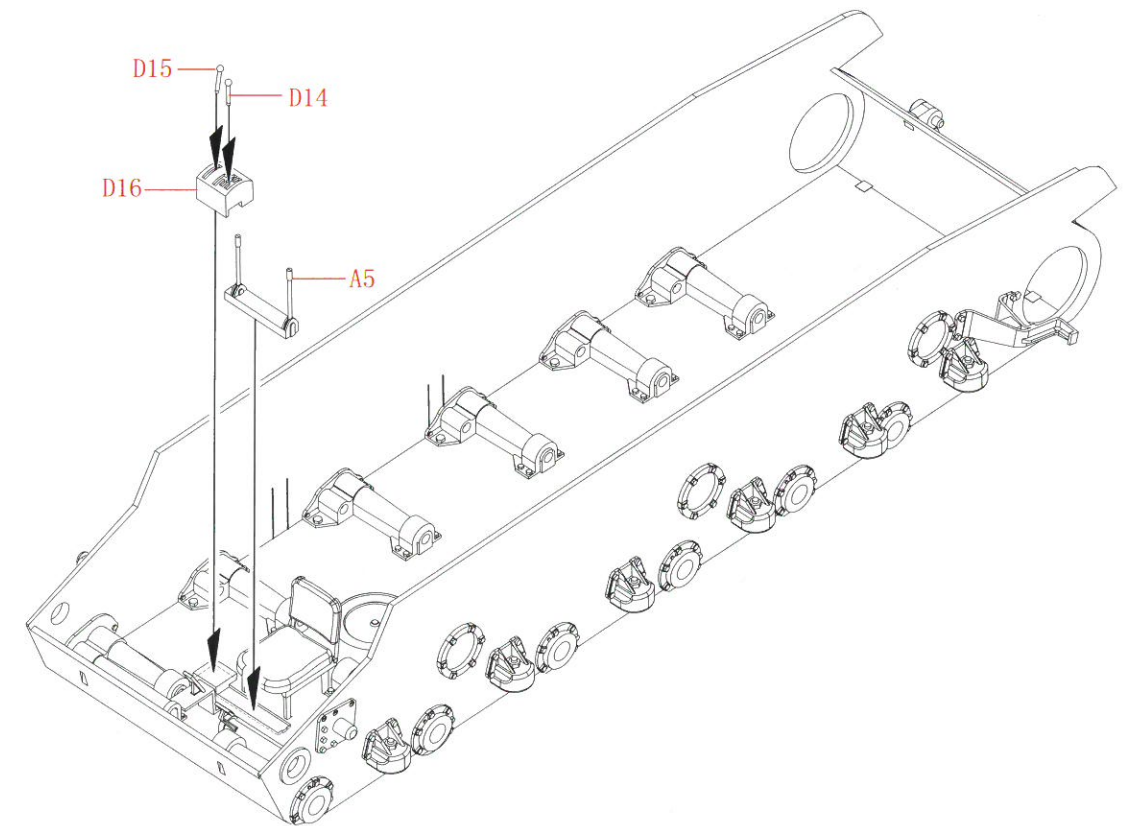
2



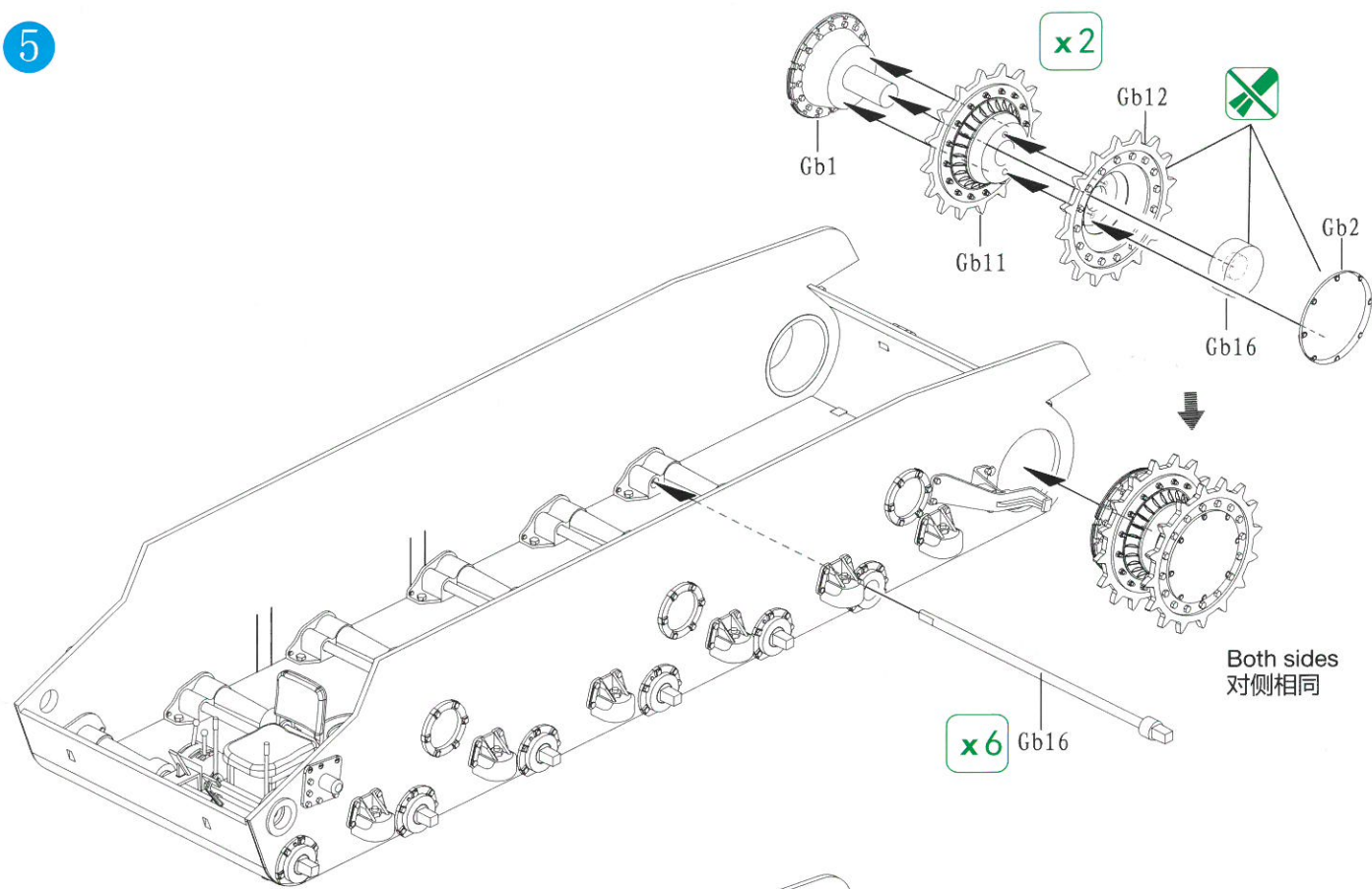
3



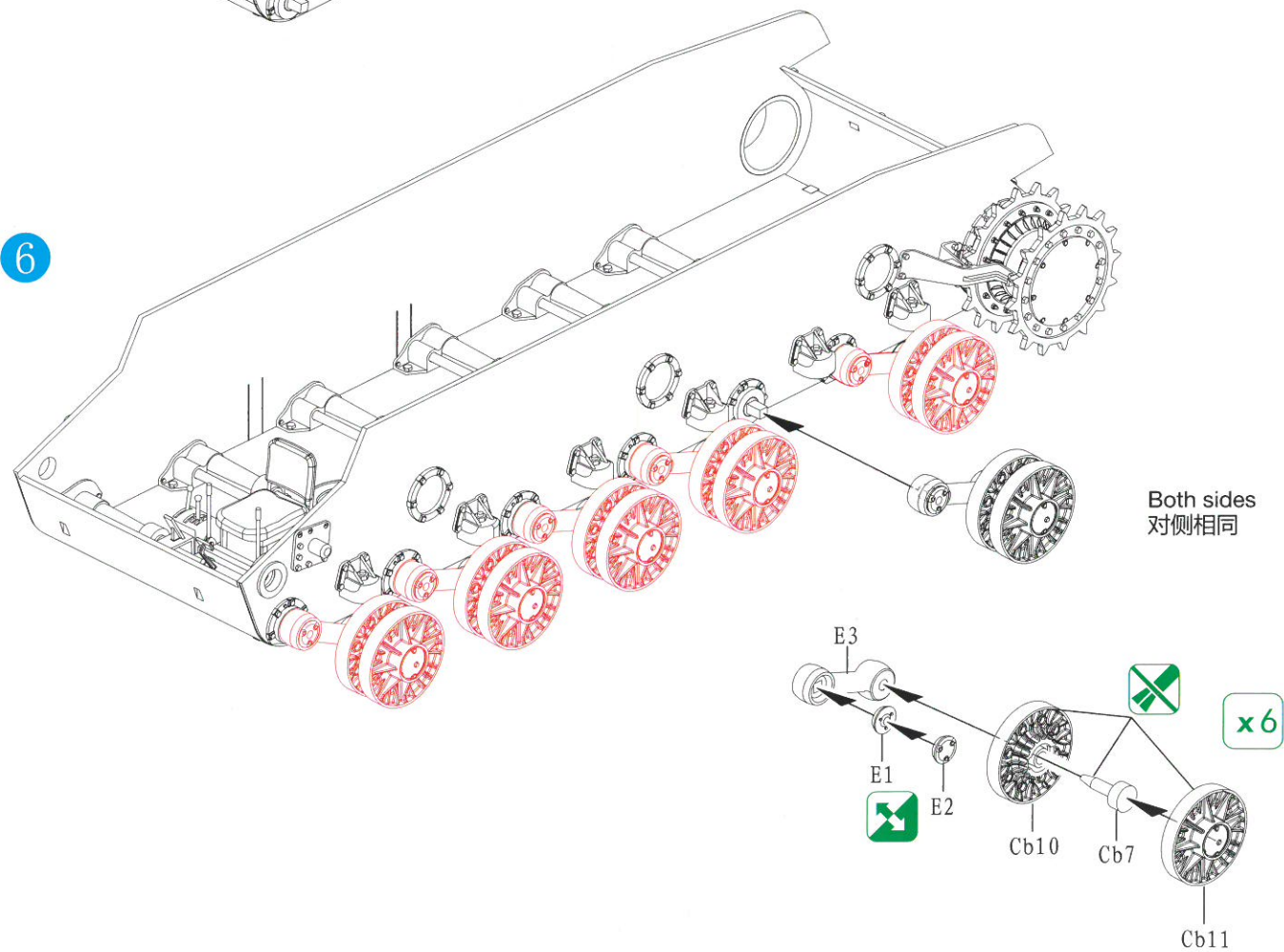
4



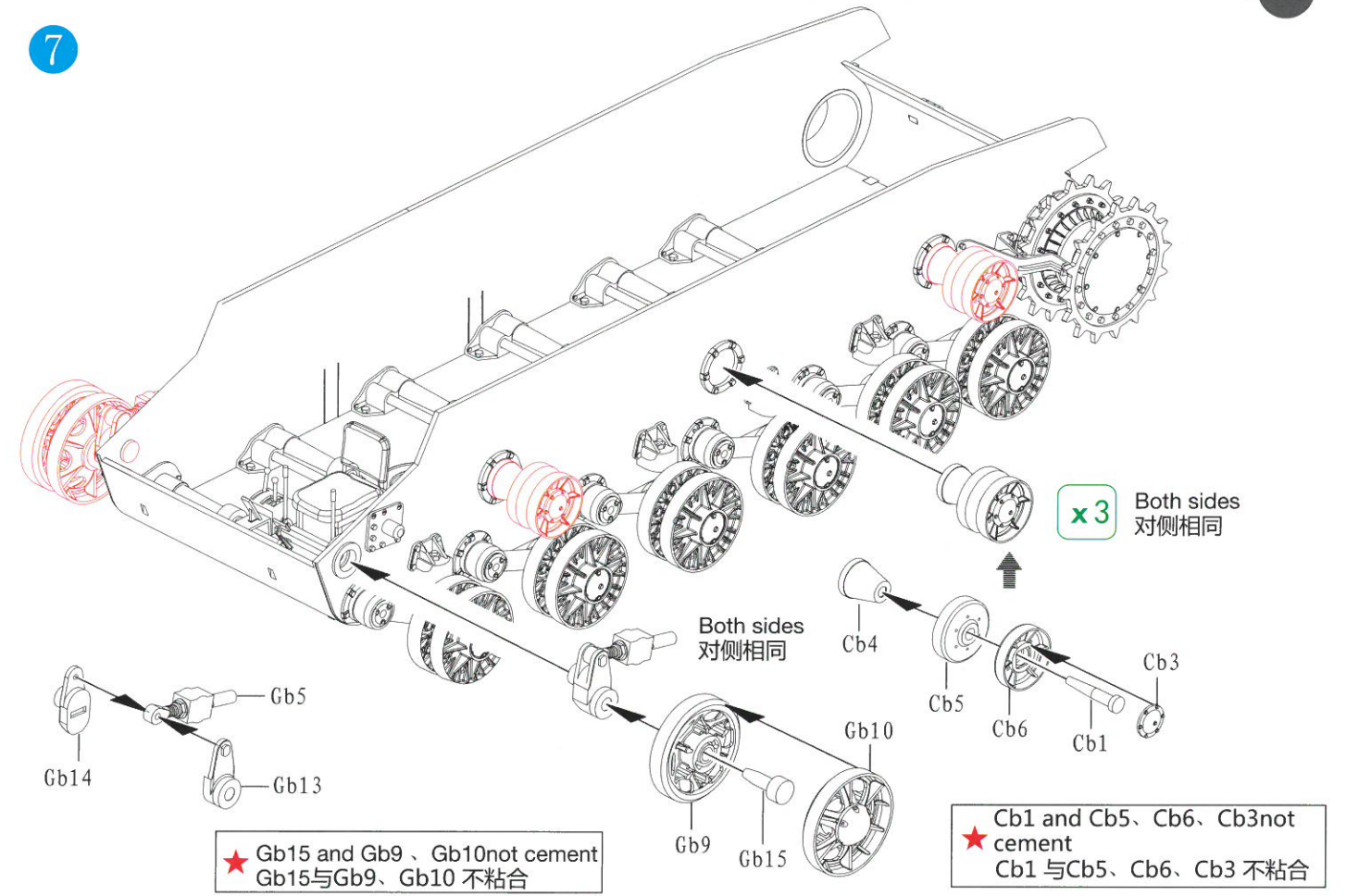
5



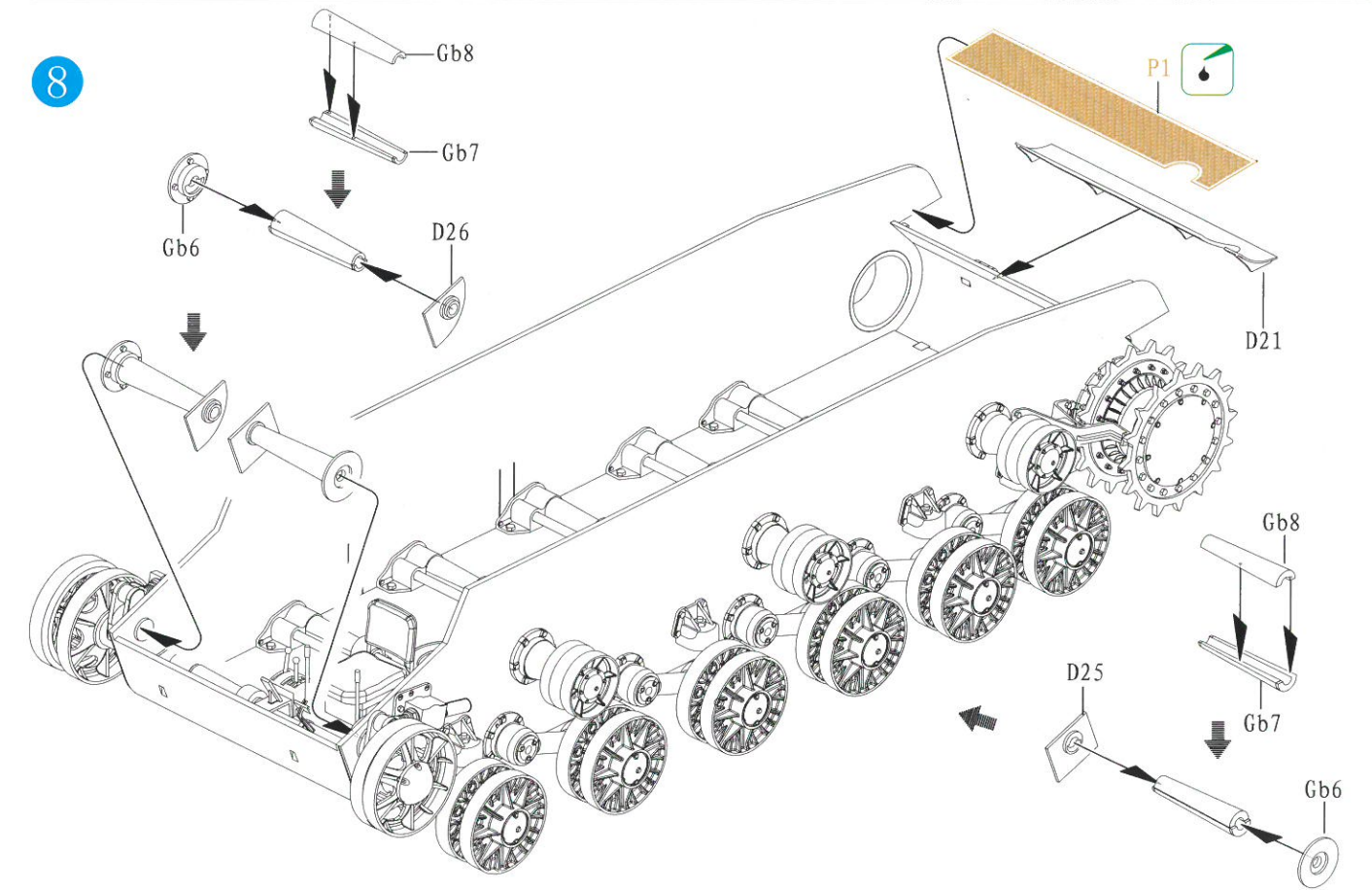
6

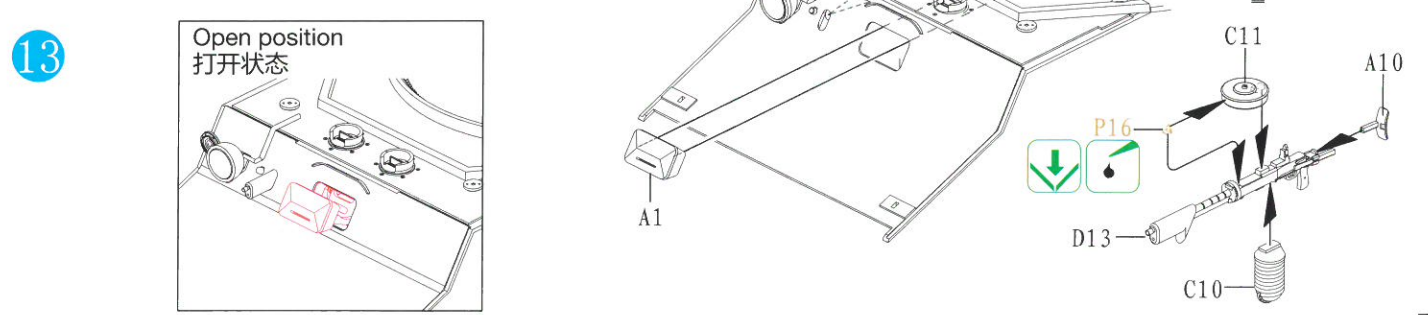
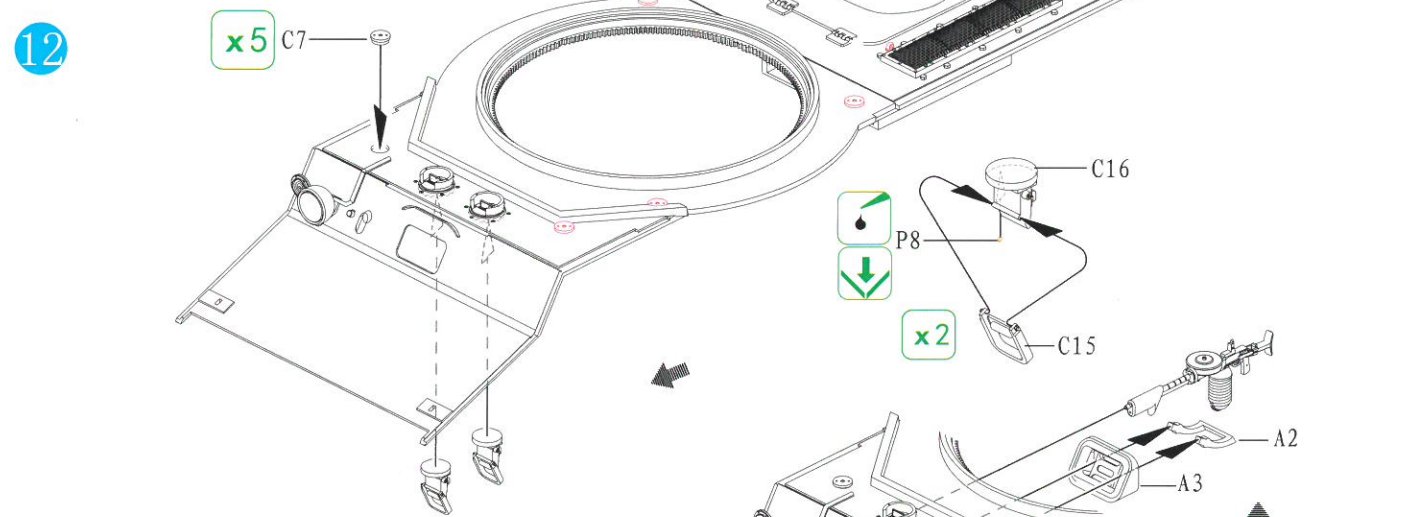
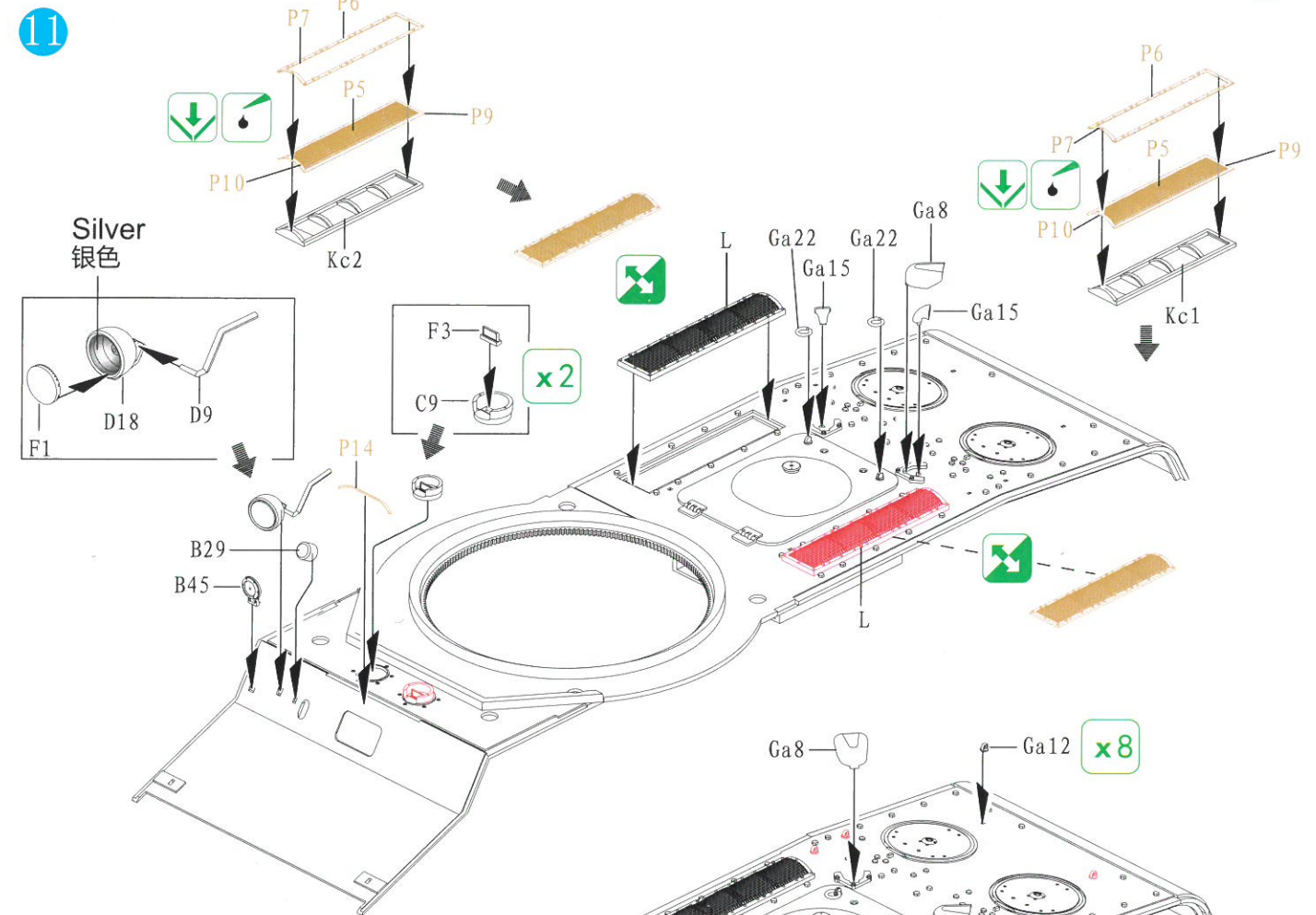
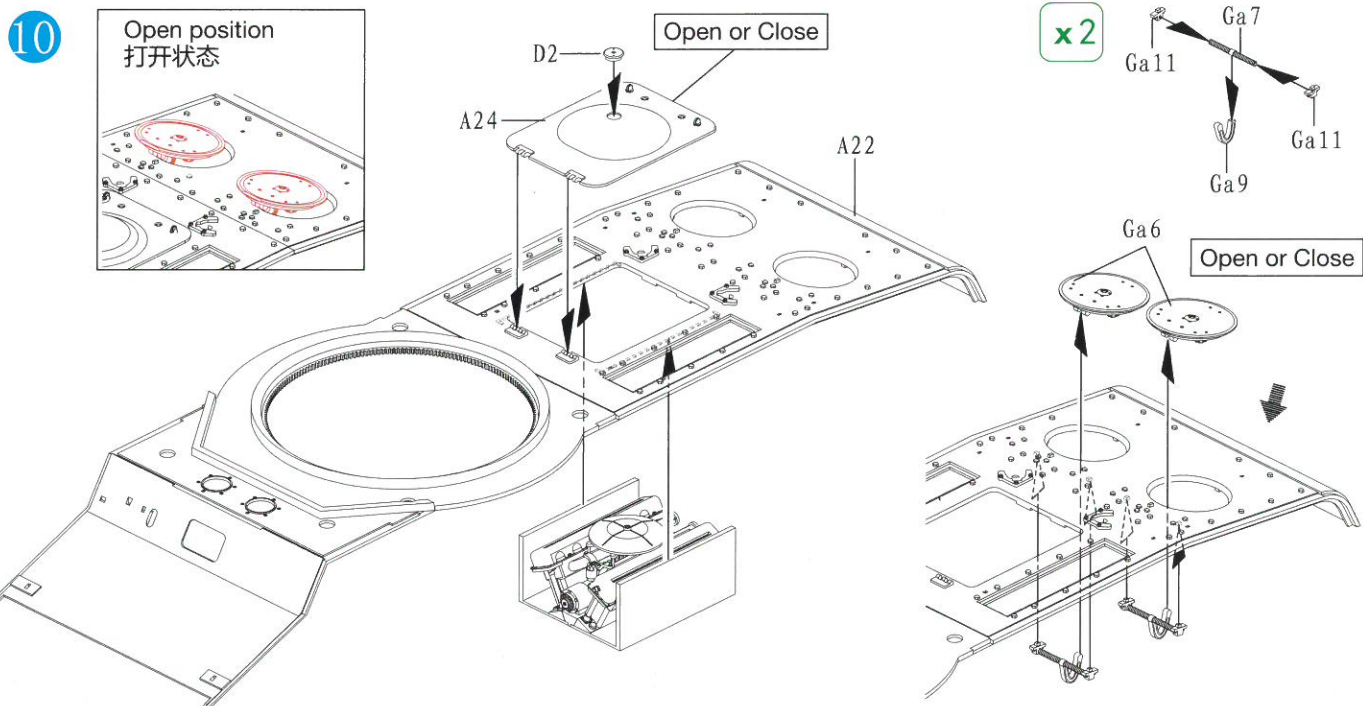
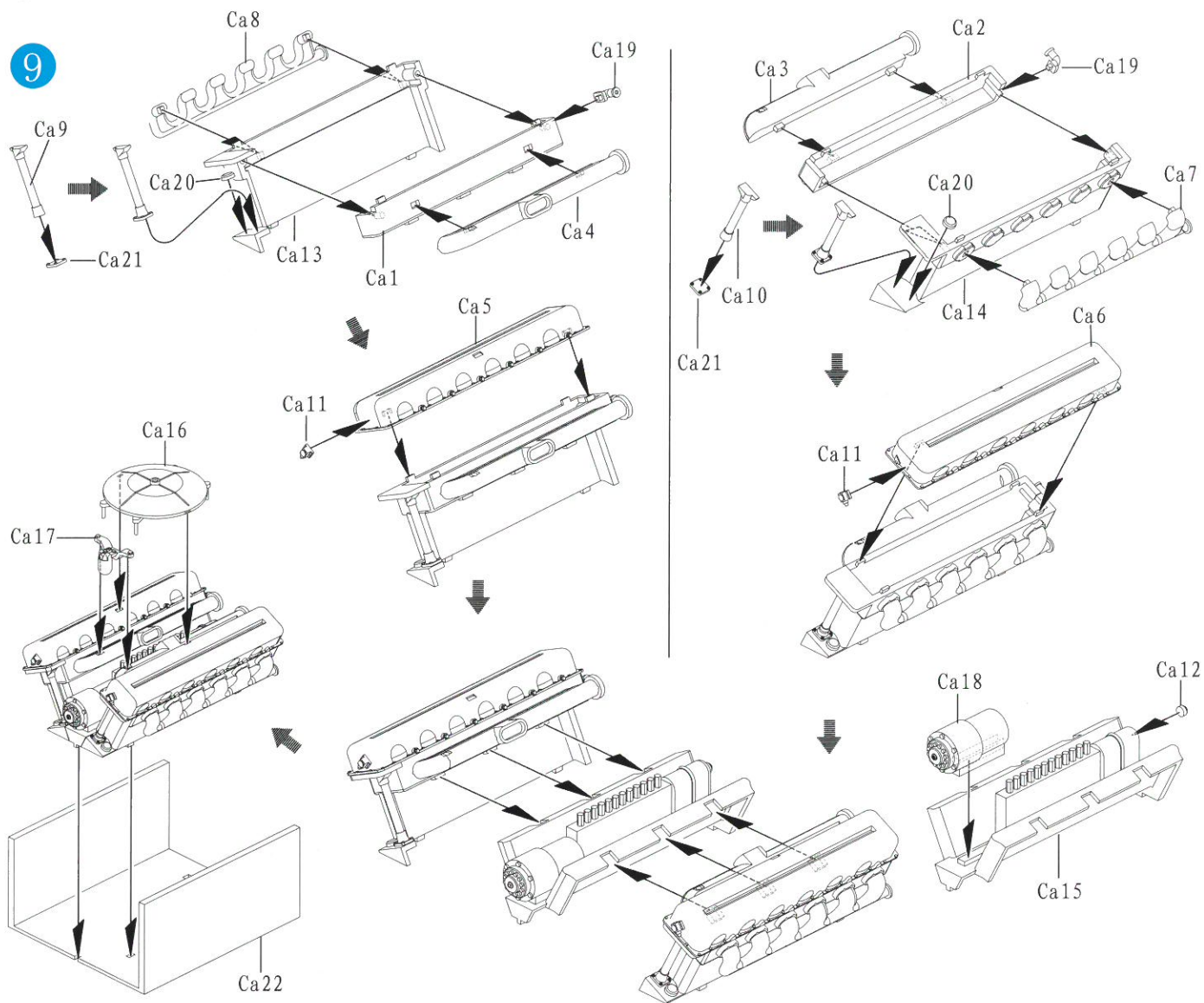


7

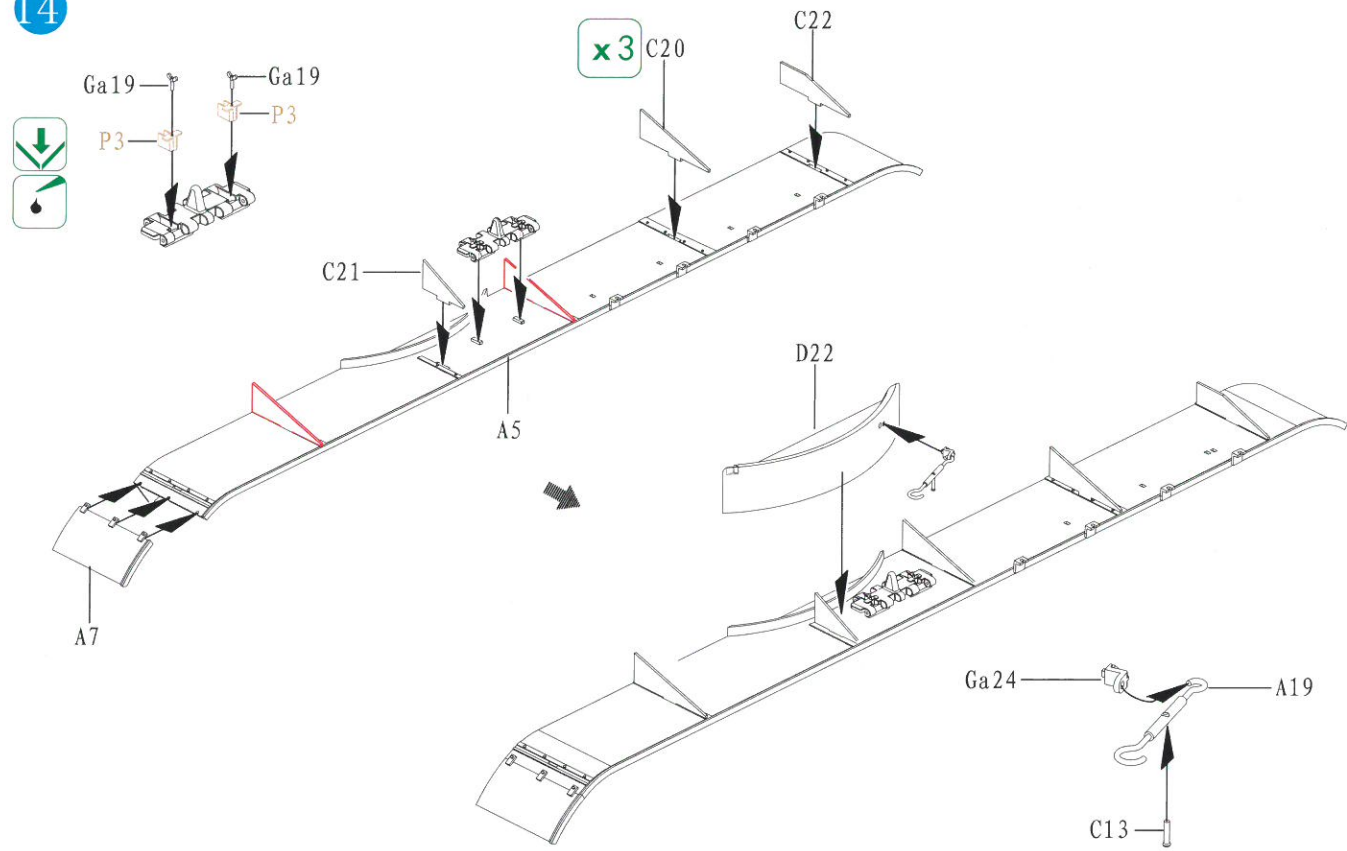


8

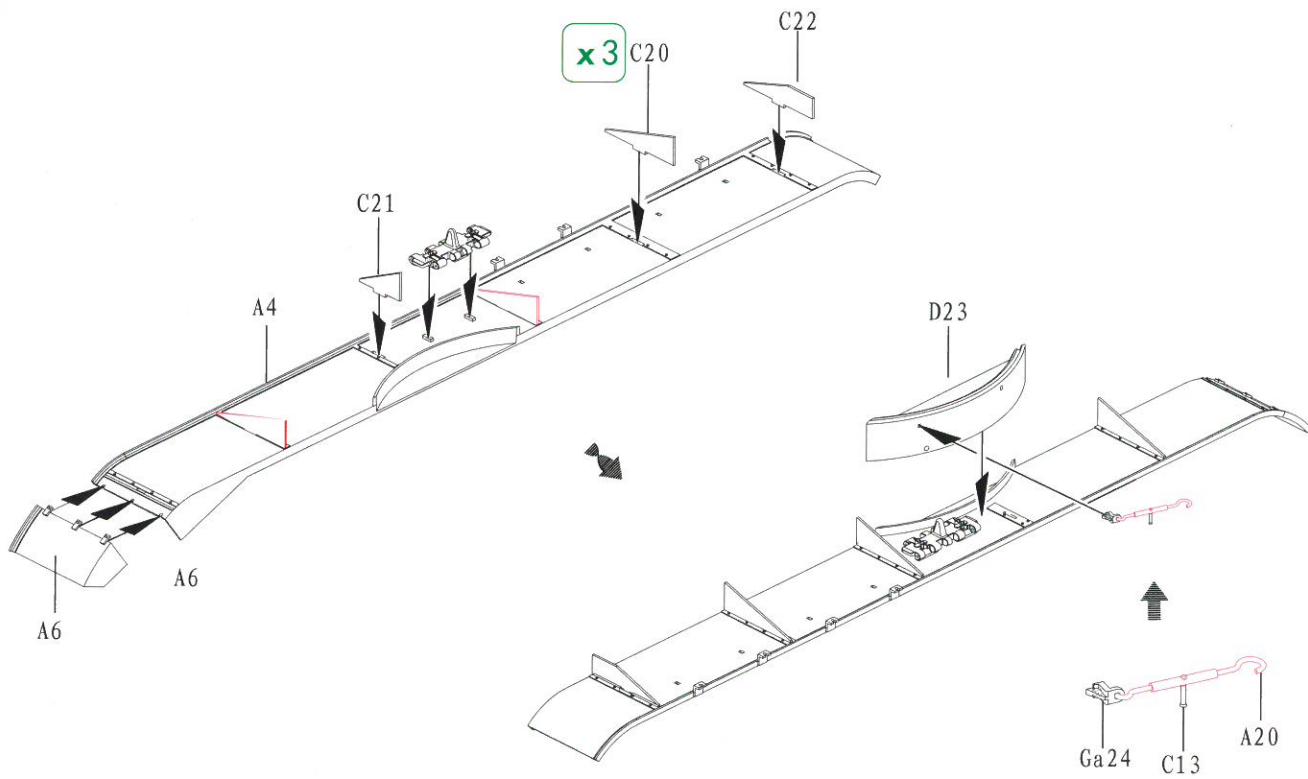




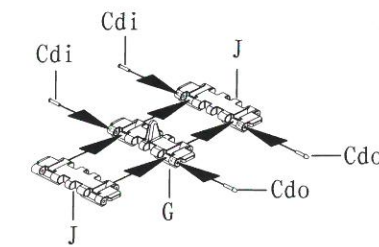
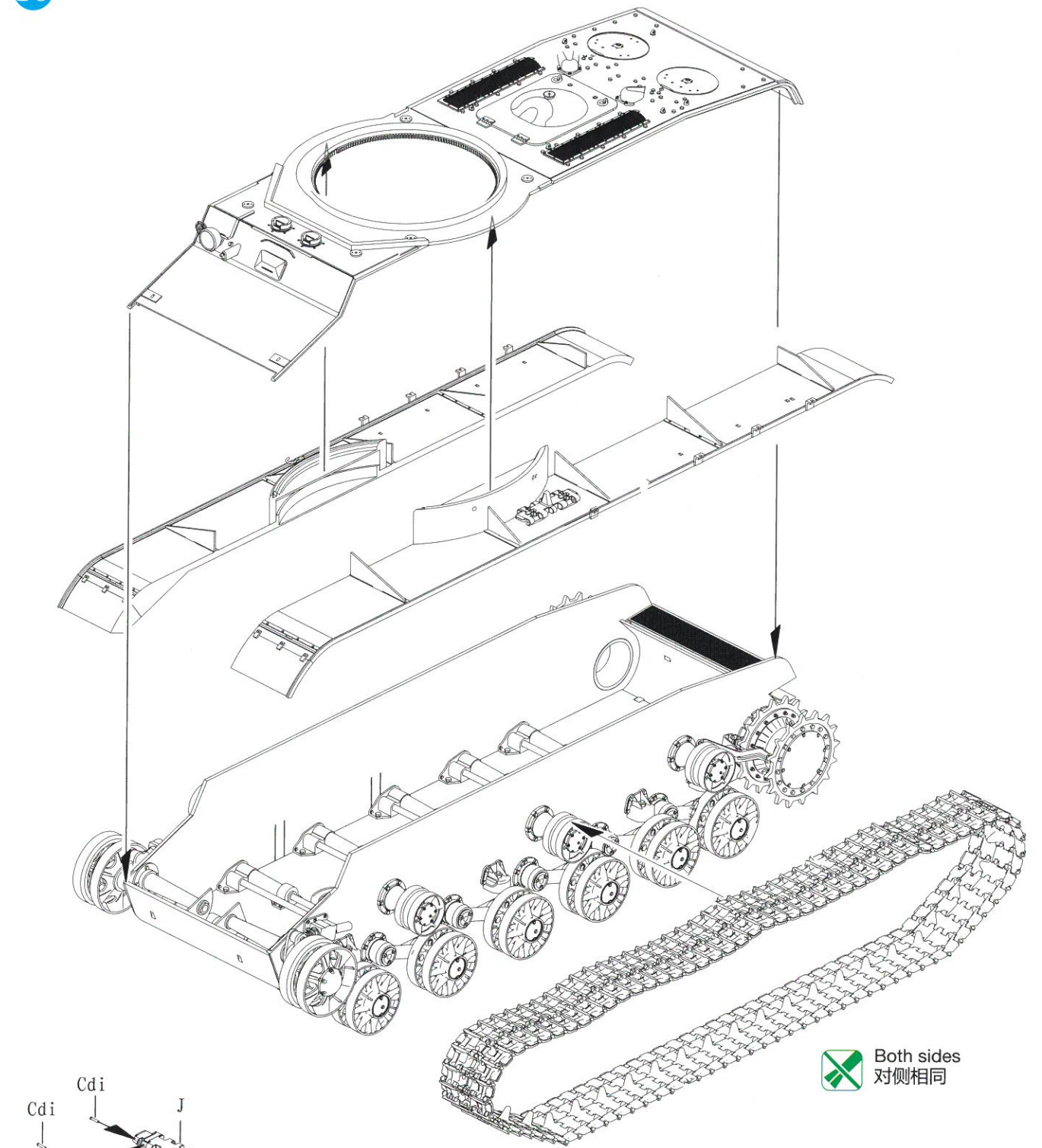
14



15



16



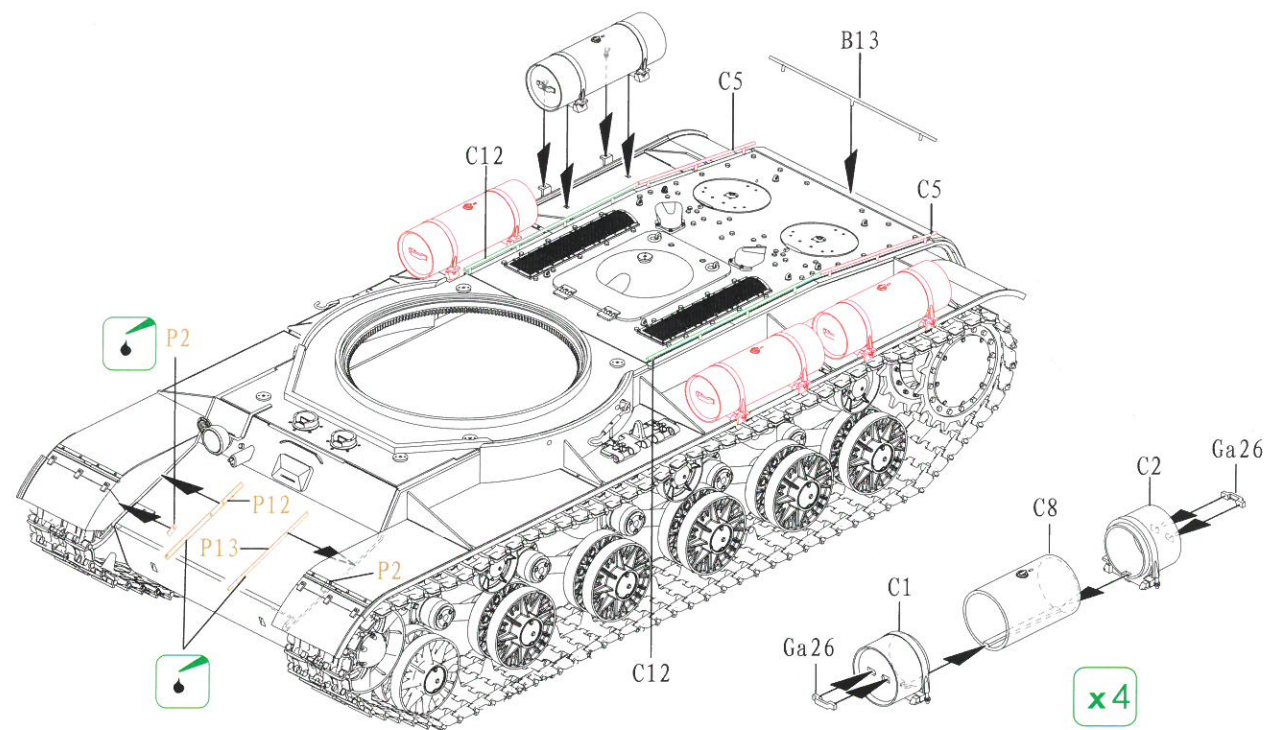
★ J and G not cement
J与G不粘合

★ Caution: G Each set x44 pc
注意: G 每组需要44枚

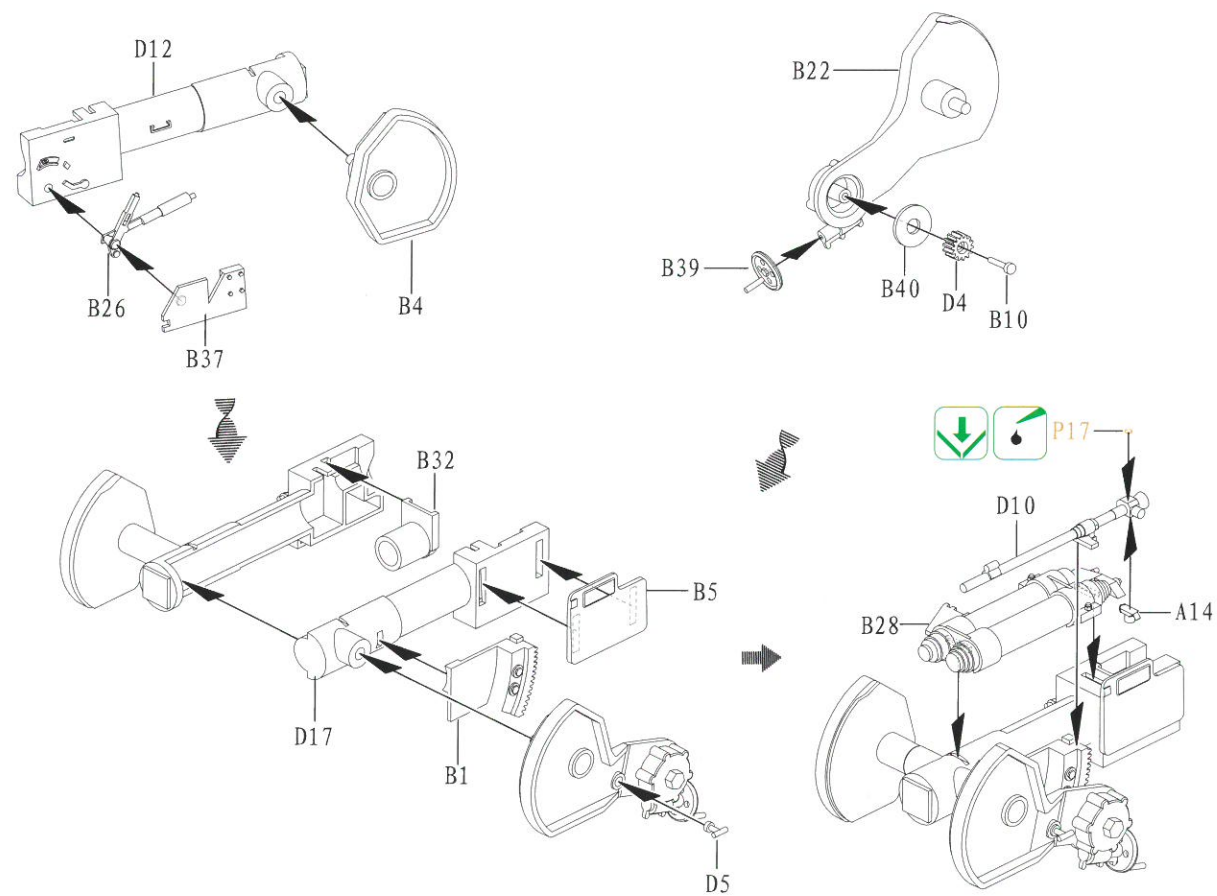
★ Caution: J Each set x44 pc
注意: J 每组需要44枚

Both sides
对侧相同

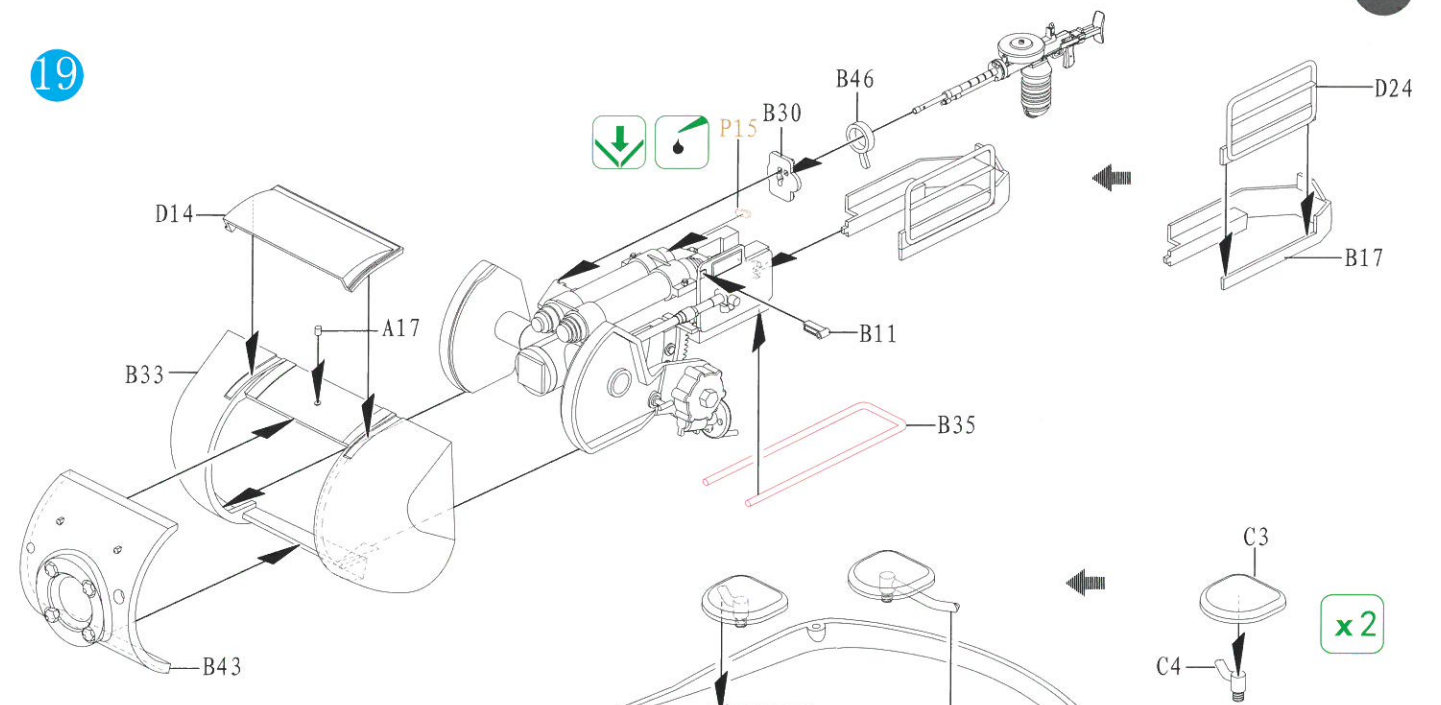
17



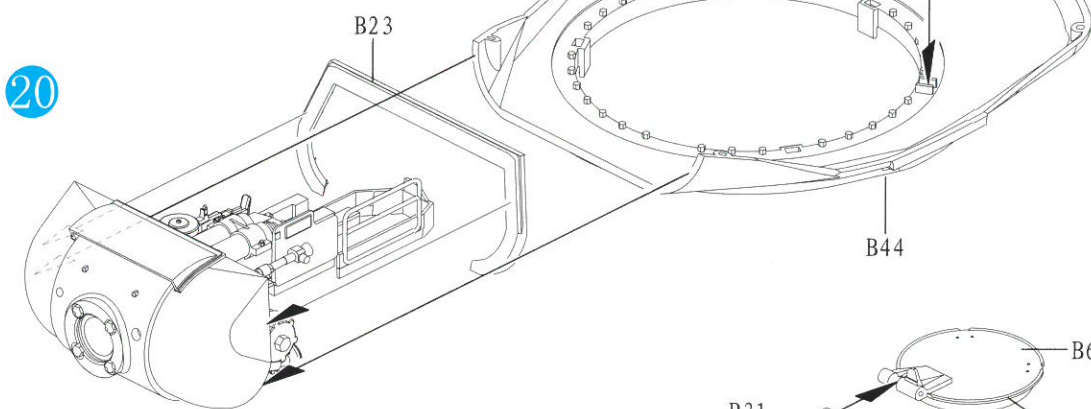
18



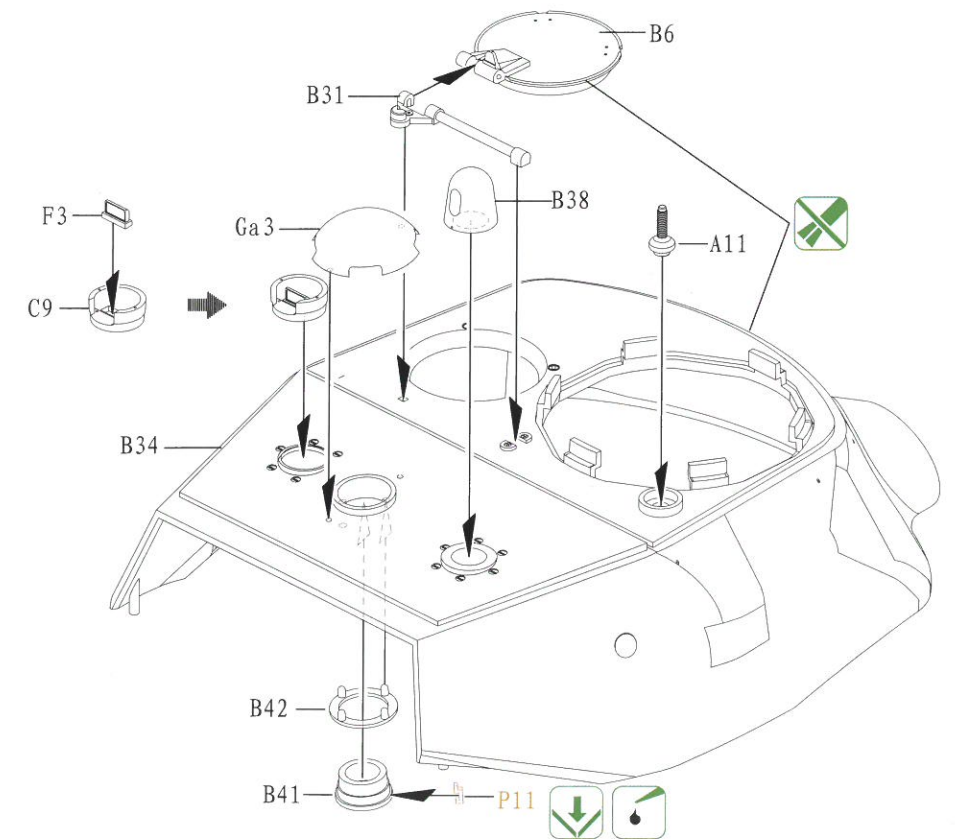
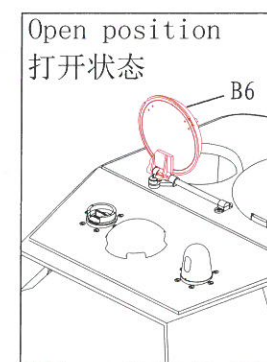
19



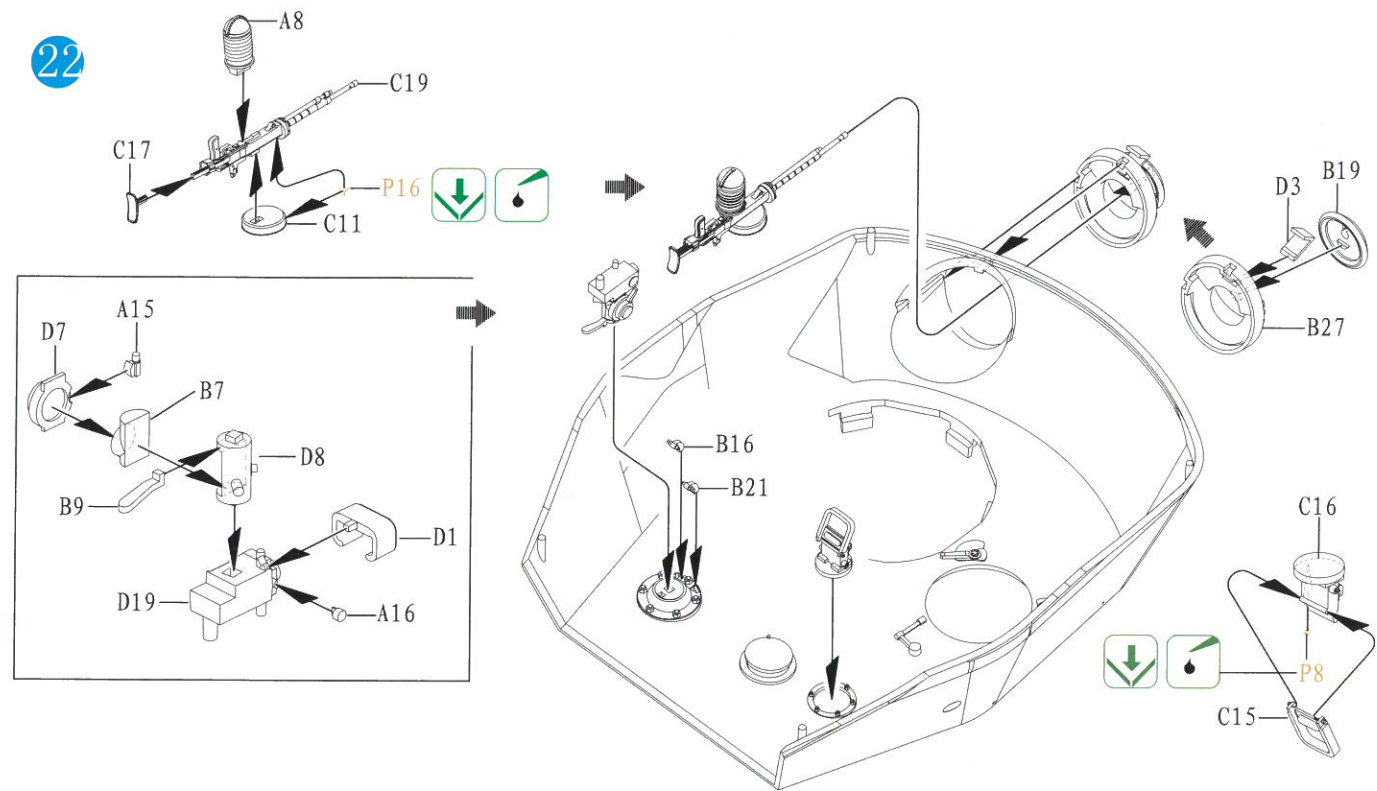
20



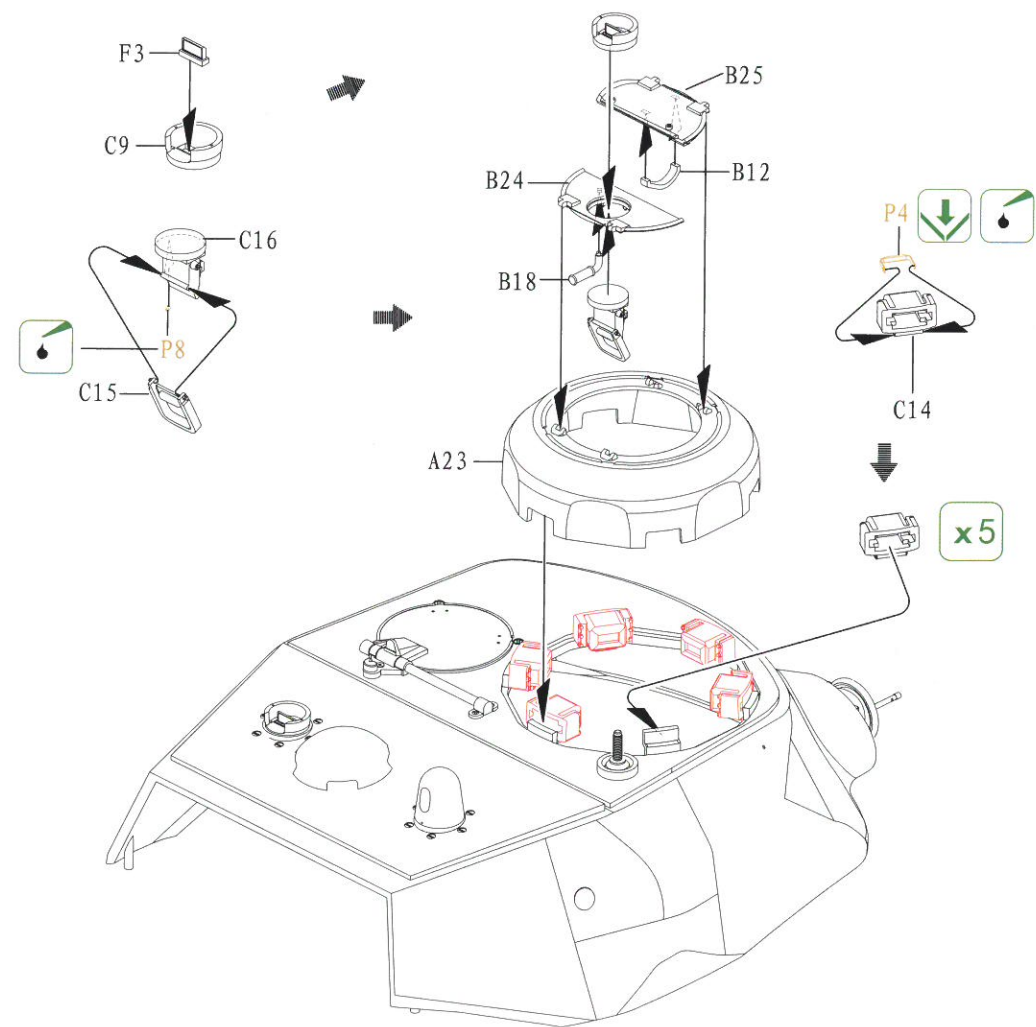
21



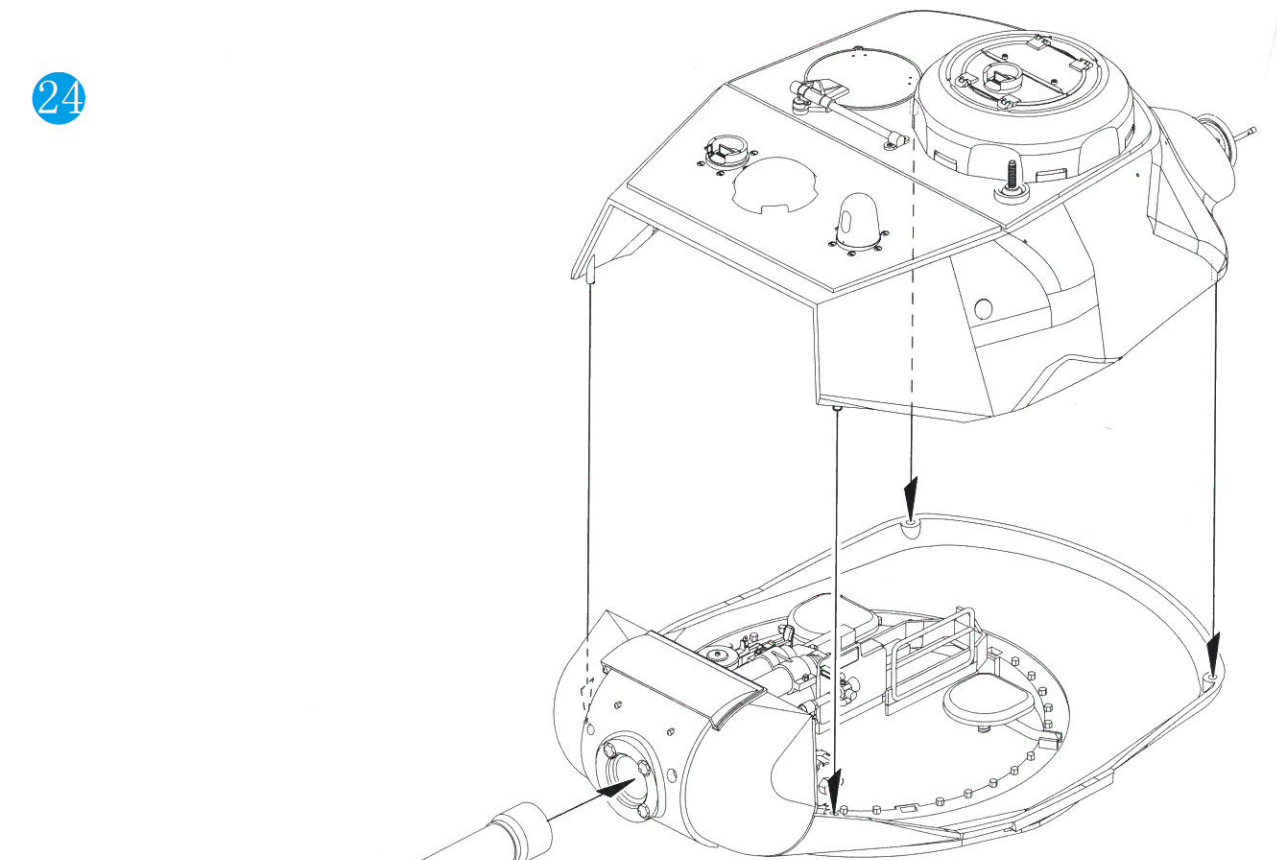
22



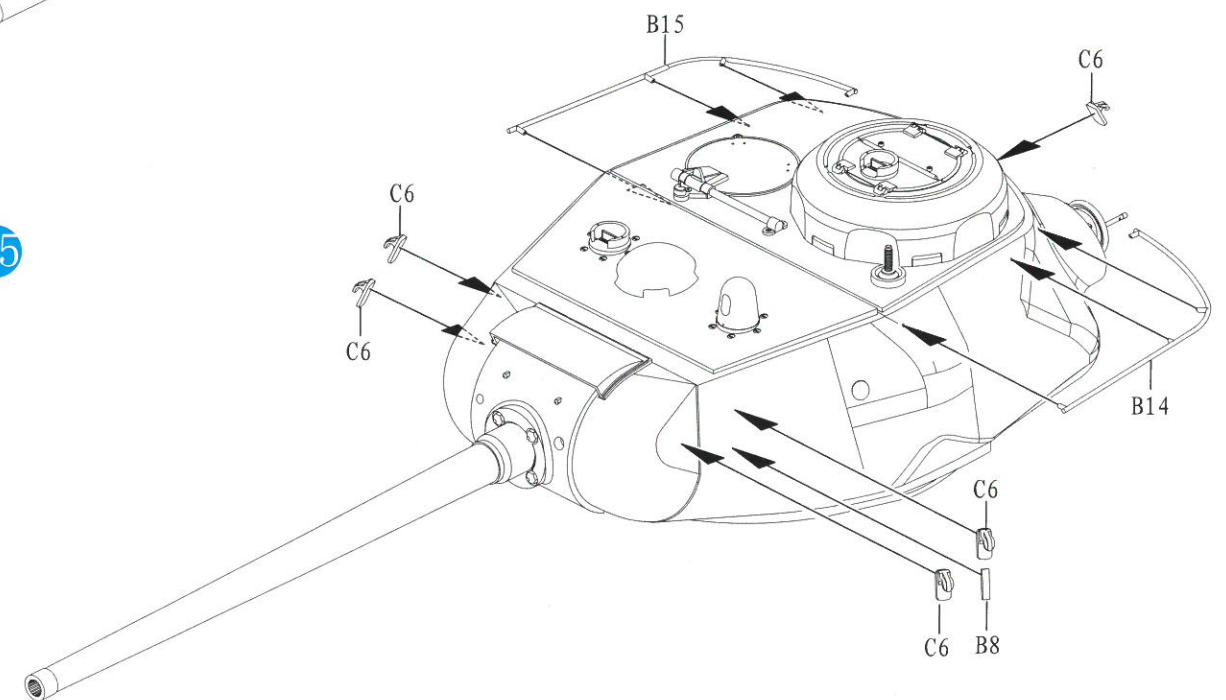
23



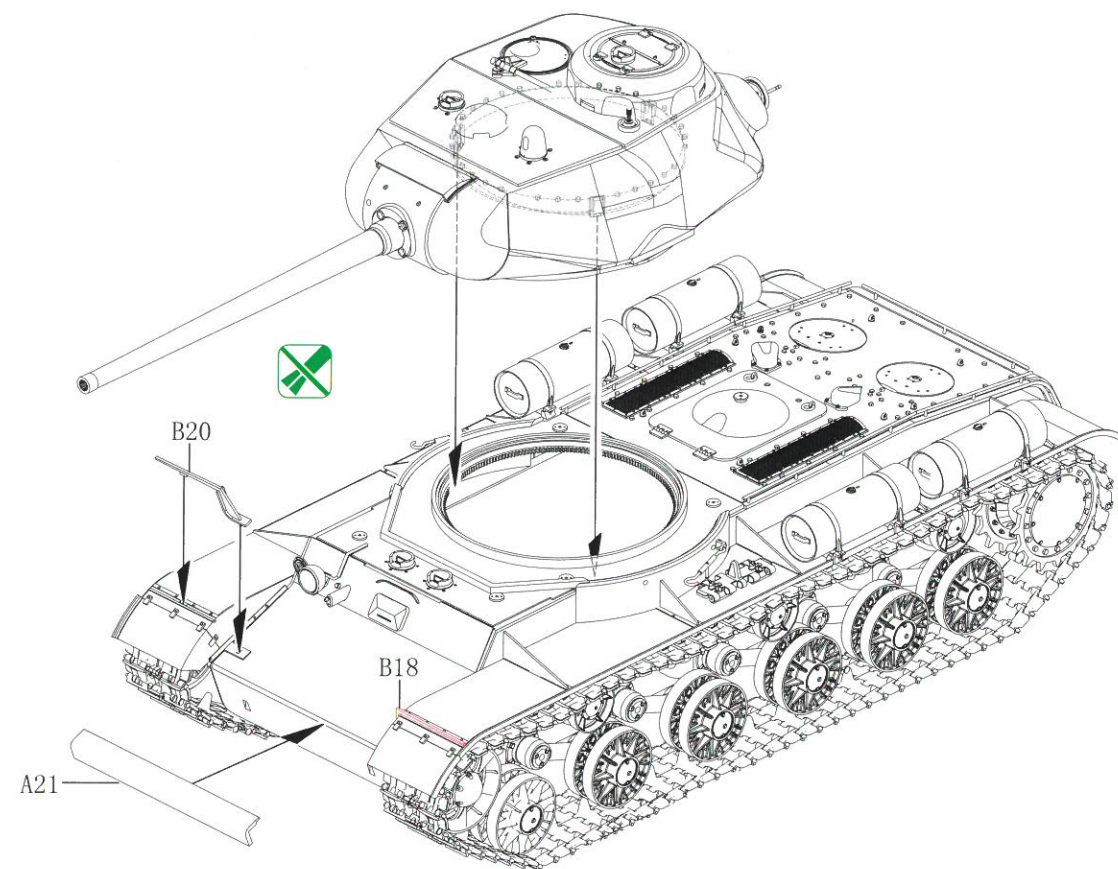
24



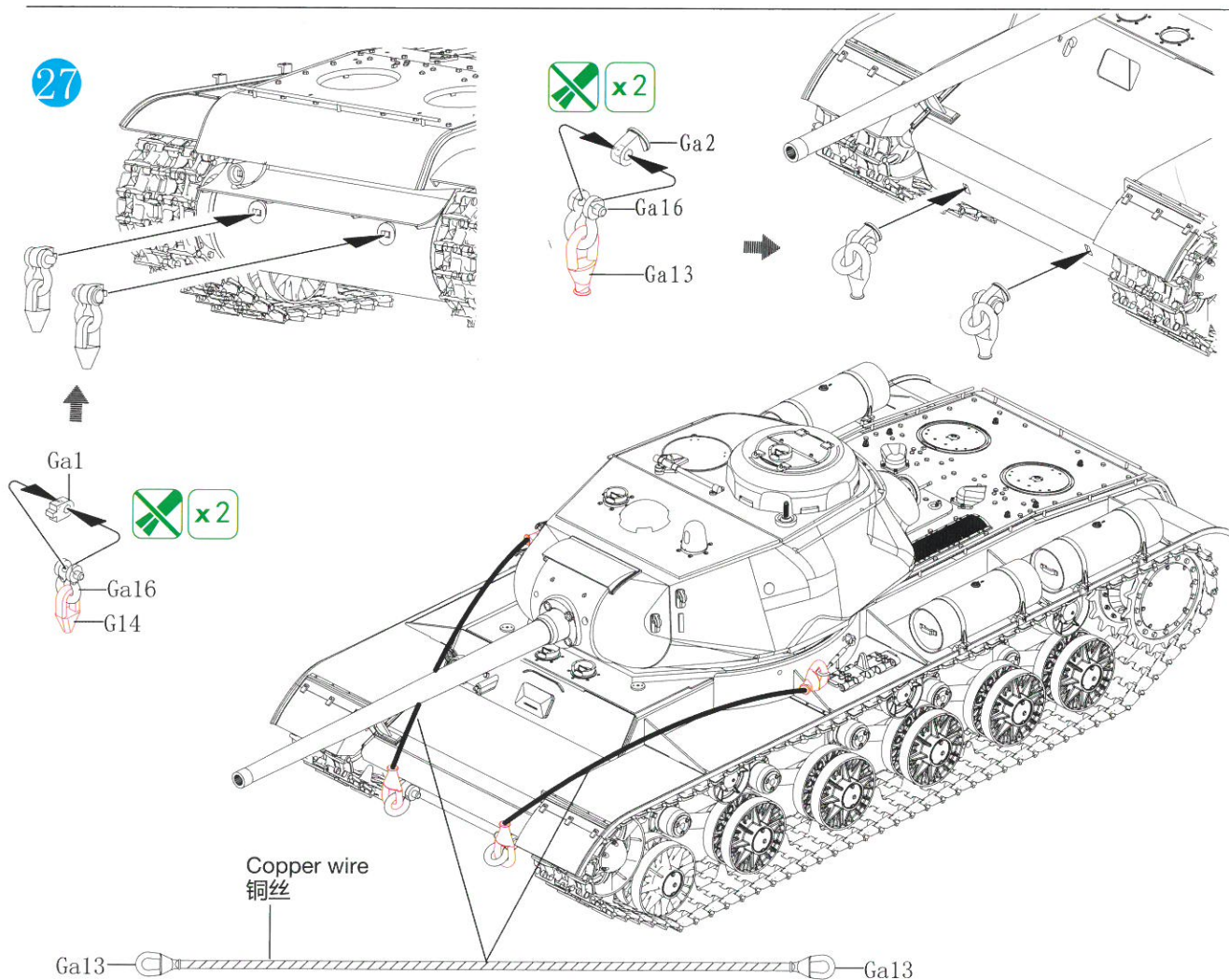
25



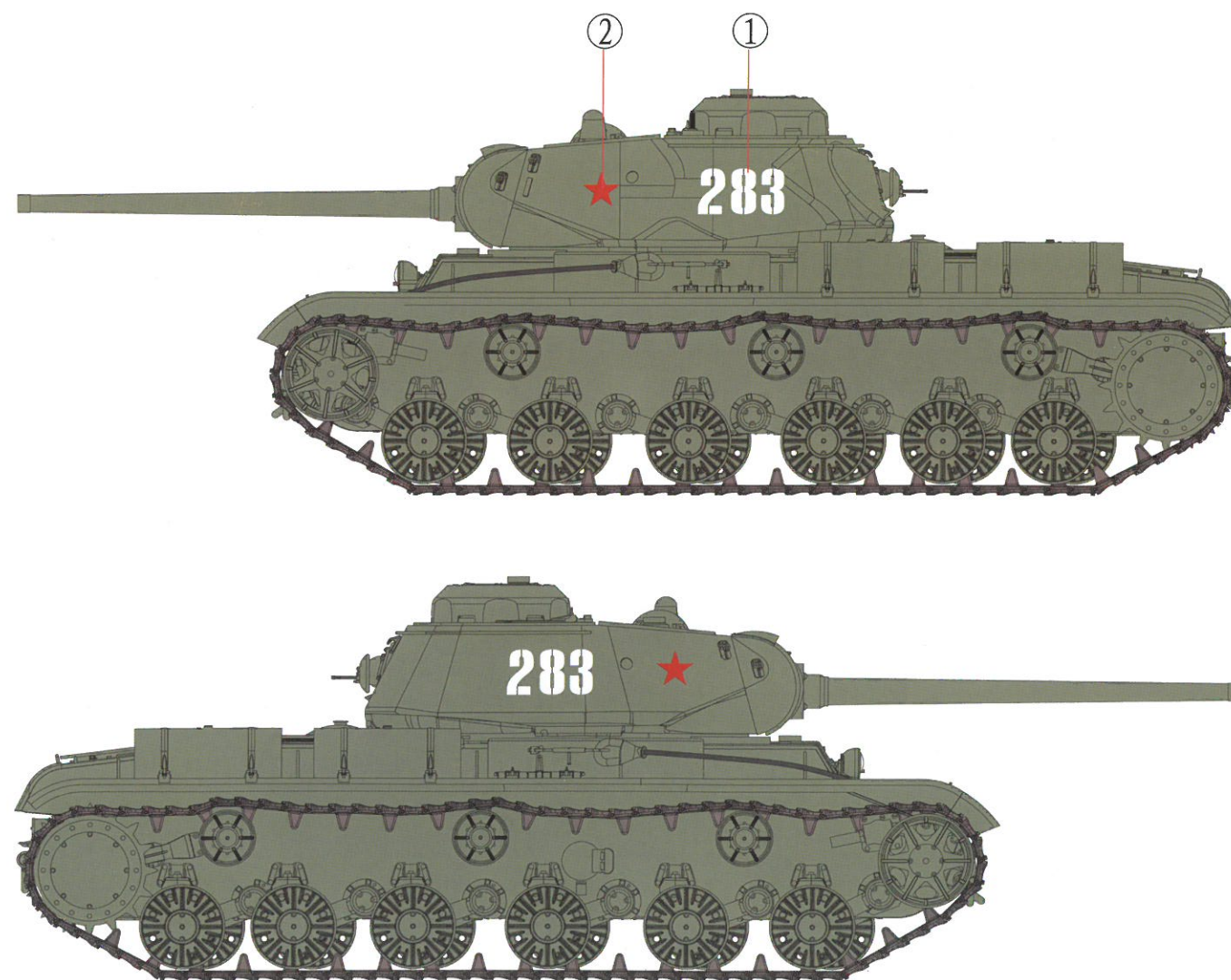
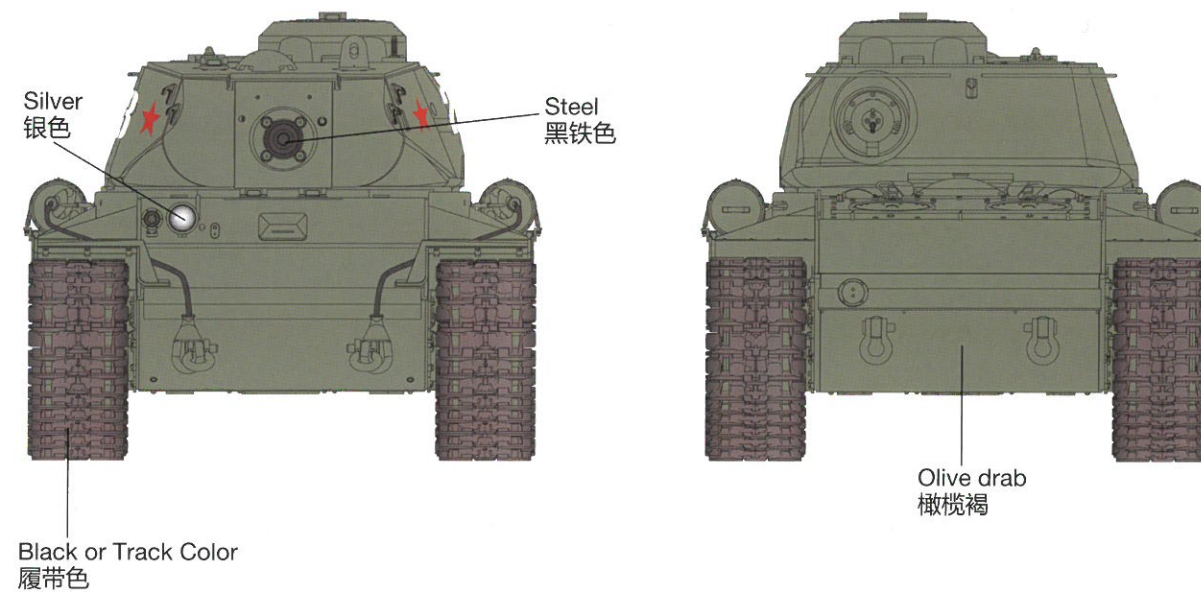
26



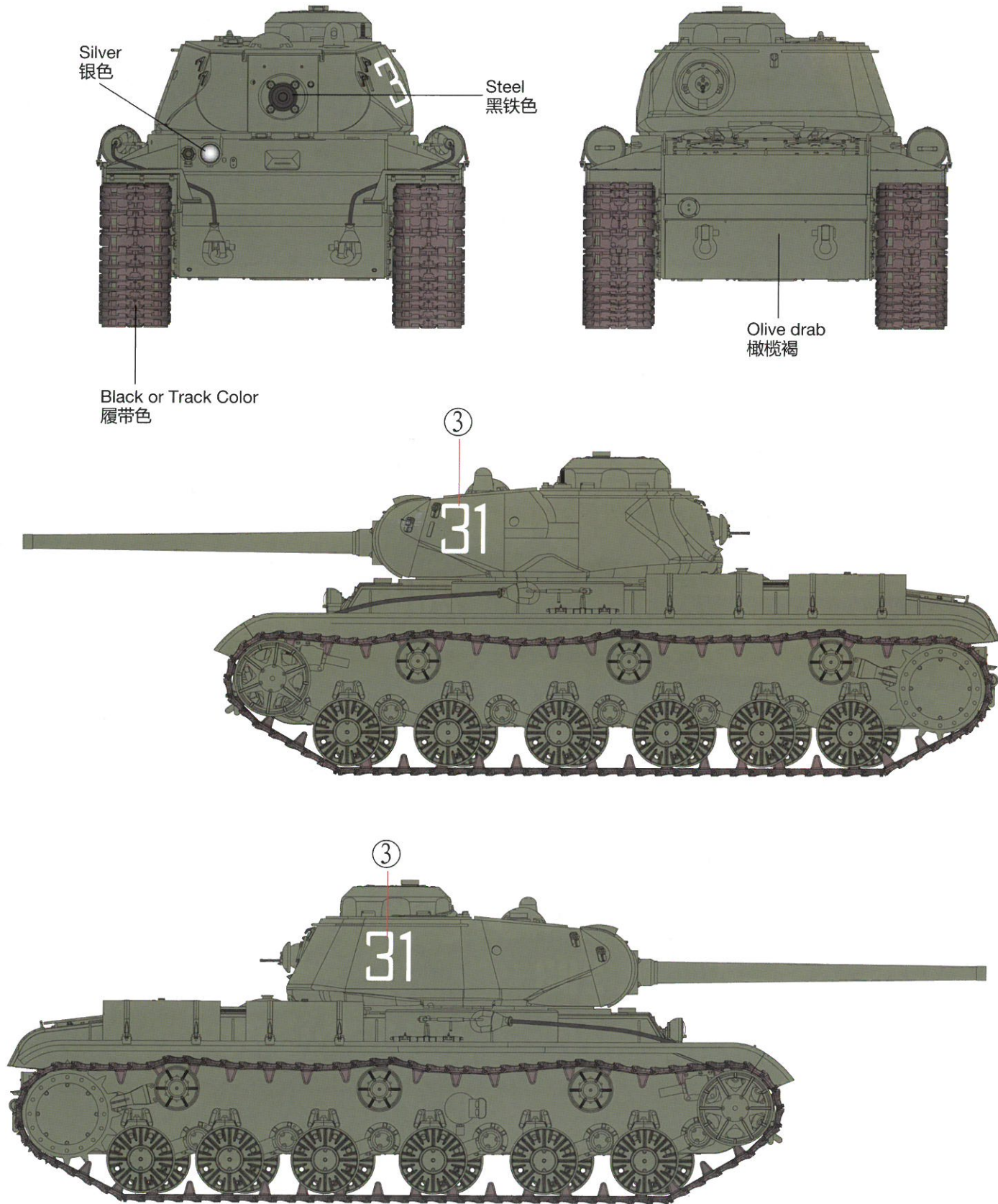
27



Option1: U.S.S.R. Army (Unit Unknown), Russian Front, Spring, 1944.
1944年春天在俄罗斯前线之前苏军坦克部队属下车辆(部队不明)。



Option2 :hit and captured by Nazis in Melitopol area, Ukraine, Nov. 1943
 此车在1943年遭纳粹德军在乌克兰梅利托波尔地区鹵獲。



Option3 : 1452 nd SP Gun Regiment ,Crimea , April , 1944 .
 1944年4月在乌克兰里米亚地区作战之第1452团属下车辆。

