



 - FREEMAN



Transformation Set
SH-60b/SH-60f(Hobby Boss) to MH-60S



MH-60S *Knighthawk*
BuNo 168532
AMPHIBIOUS FORCE SEVENTH FLEET (CTF-76)
JOINT REGIONS MARIANAS



Transformation Set For SH-60f to MH-60s

Operators:   

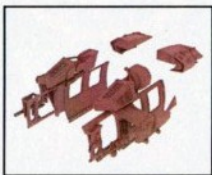
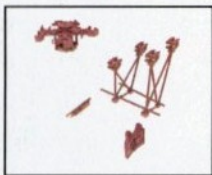


Included:

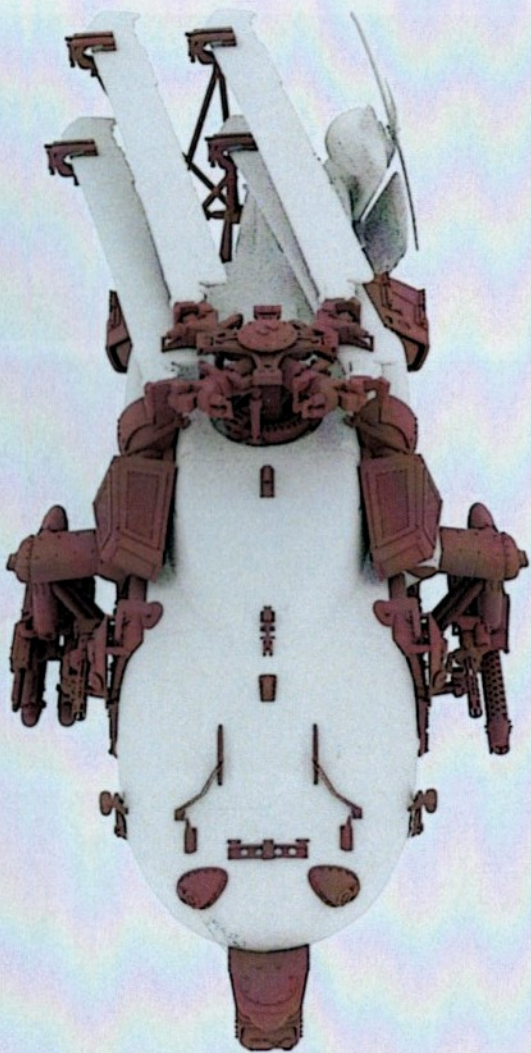
Folding Module

Body Parts Module

Option Parts Module



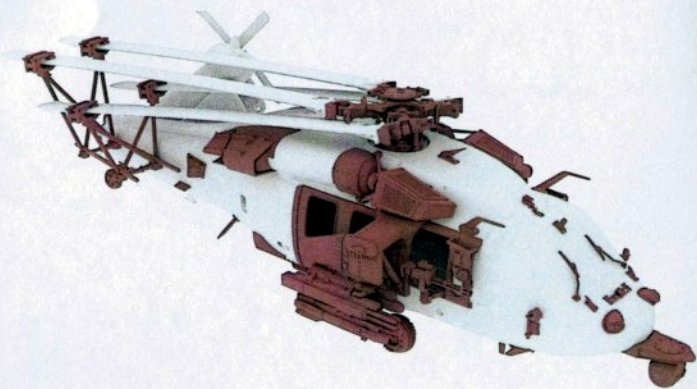
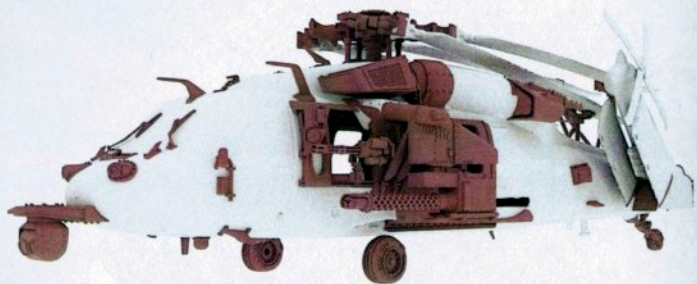
Design By Freeman D

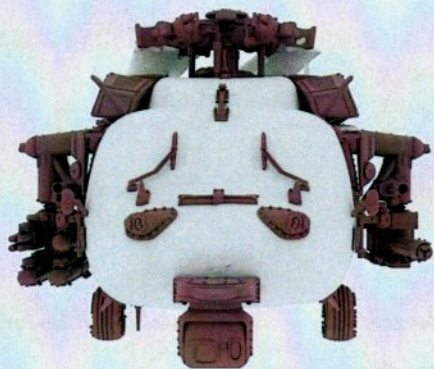






Full Set Image





Folding Module List

01. Rotor



04. Blade Stander



02. Folding Tail Part



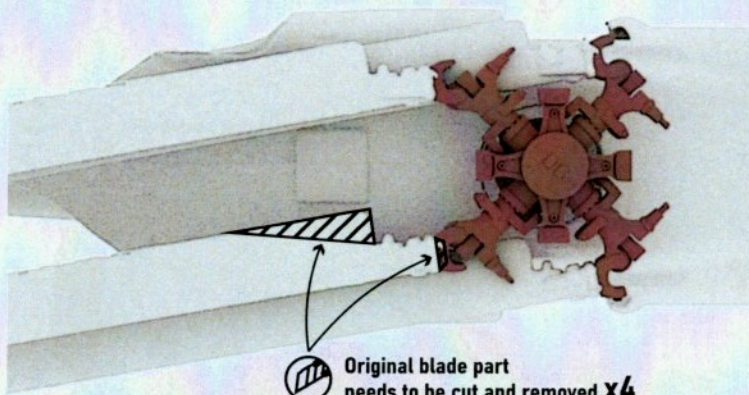
05. Blade Stander Top Parts x4



03. Tail Plane Folling Part



Folding Module Assembly



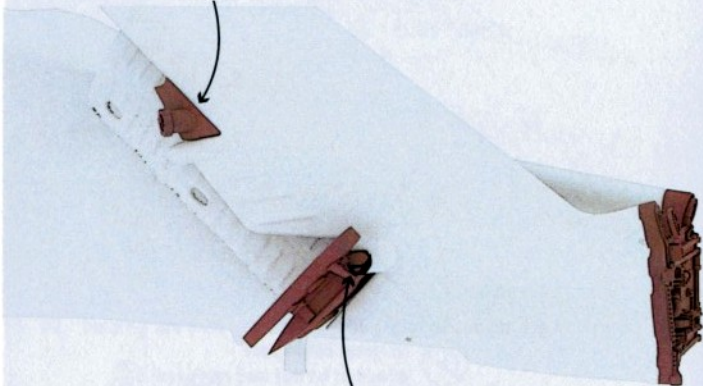
Original blade part
needs to be cut and removed X4



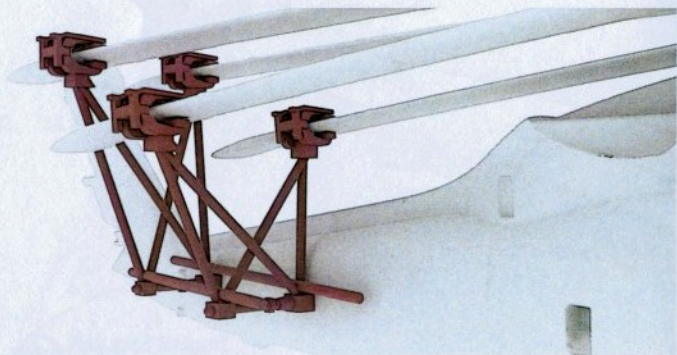
Original body part
needs to be cut



**Careful Option Parts No. 10
needs to be installed in here**

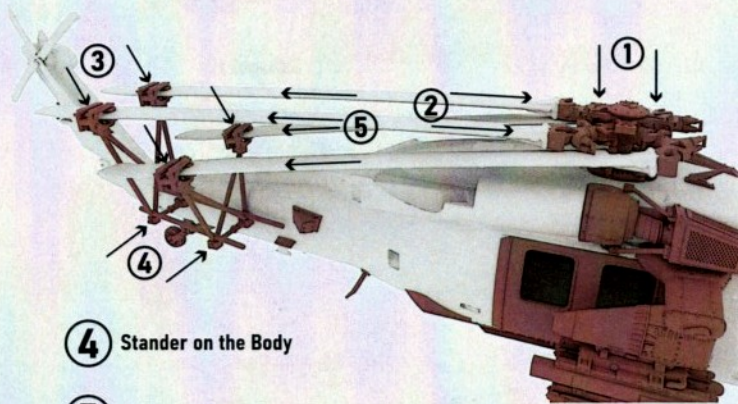


**Original body part
needs to be cut and removed**



**Careful Blade Stander and Stander Top Parts
assembly position and direction**

- 1 Rotor on the Body
- 2 Blades on Rotor
- 3 Stander Top Parts on Stander



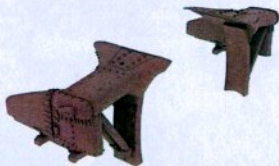
- 4 Stander on the Body
- 5 Blades on Stander
- 6 Final check for every part position in right place and can be assembled

Body Parts Module List

01. Intake Filter x2



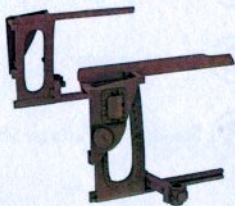
02. Shoulder Pylon x2



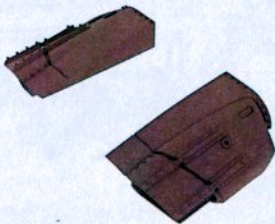
03. Side-Door x2



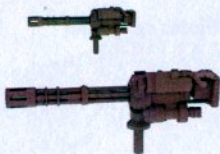
04. Side Window x2



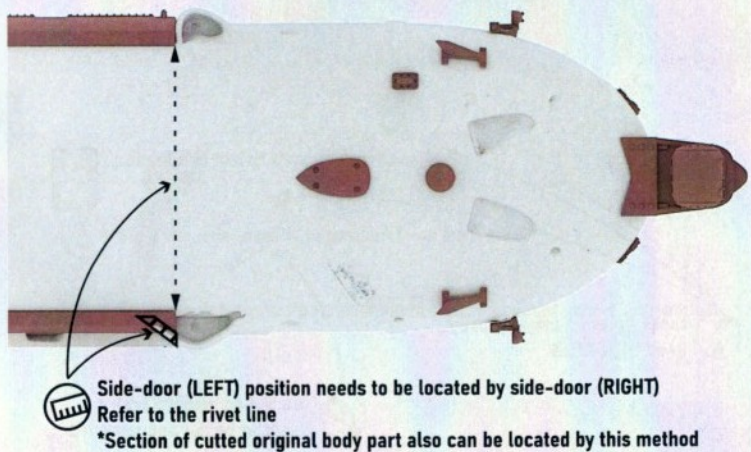
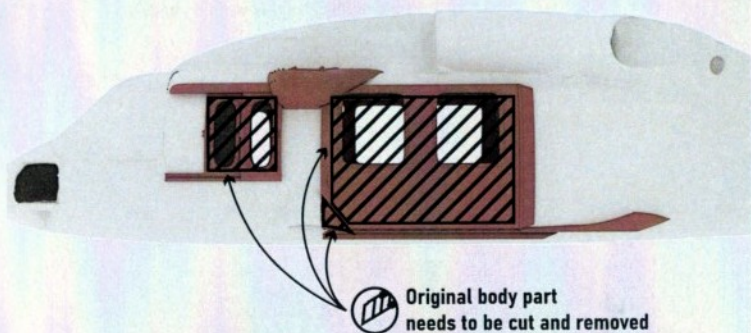
05. Exhaust x2



06. Mini Gun

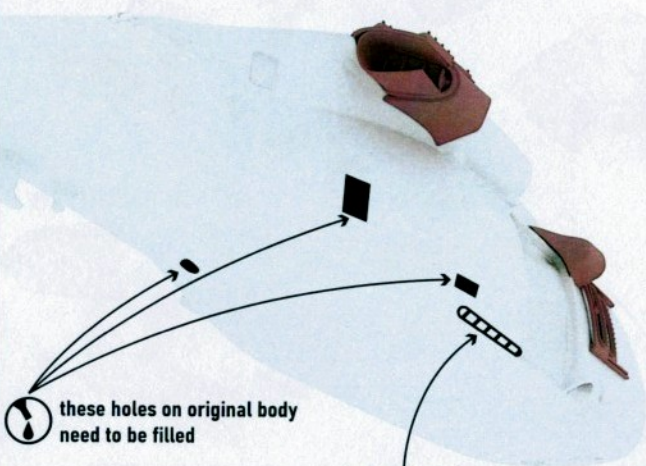
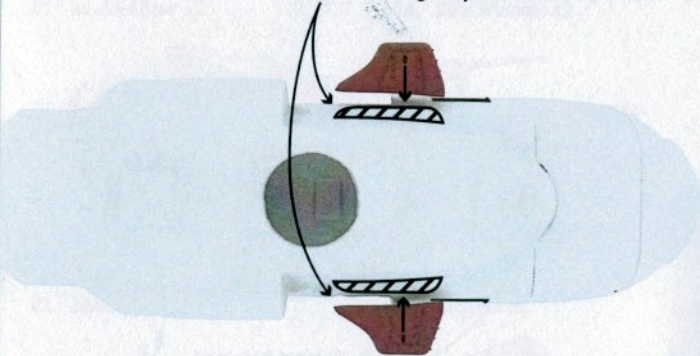


Body Parts Modification & Assembly





Pylon Bases need to be aligned with original platform from the REAR



these holes on original body need to be filled

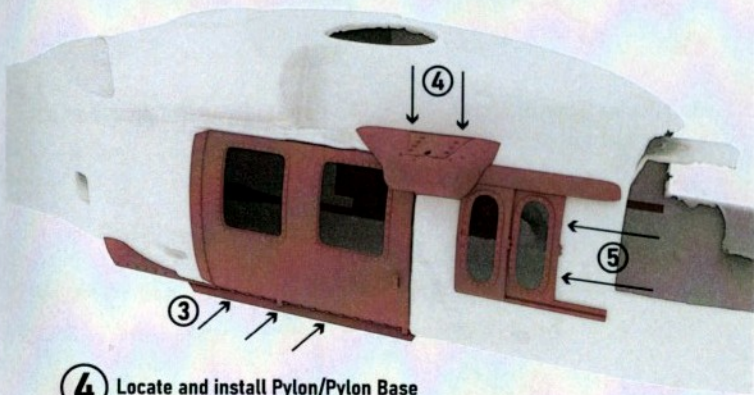


The RIB on original body needs to be cut and removed

1 Cut and remove original body parts

2 Fill the holes on original body

3 Install the side door



4 Locate and install Pylon/Pylon Base

5 Slide the side window in position from front side

6 Final check for every part position in right place and can be assembled

Option Parts Module List

01. Rear Wing x2



02. Pitot x2



03. Antenna (Front Under) x2



04. Antenna (Front Nose) x2



05. Antenna (Under)



06. WSPS (Upper)



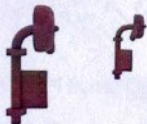
07. Wheel (Front) x2



08. Pipe



09. Mirror x2



10. Warning System (Rear)



11. Unit (Under)



12. Hinge



13. WSPS (Head)



14. Wheel (Rear)



15. Flare x2



16. Warning System (Front) x2



17. Sensor (Under)



18. Antenna (Front Upper)

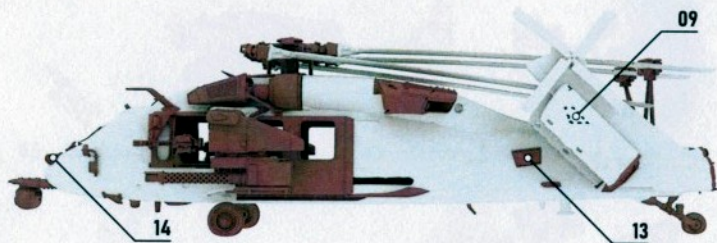
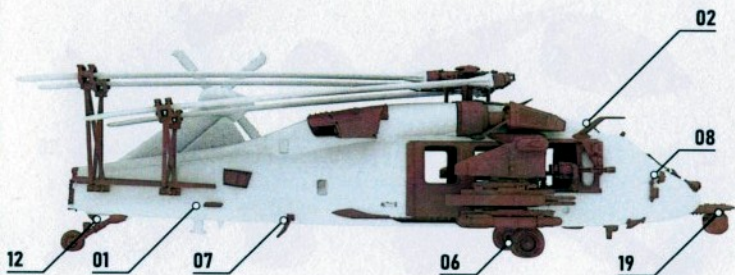


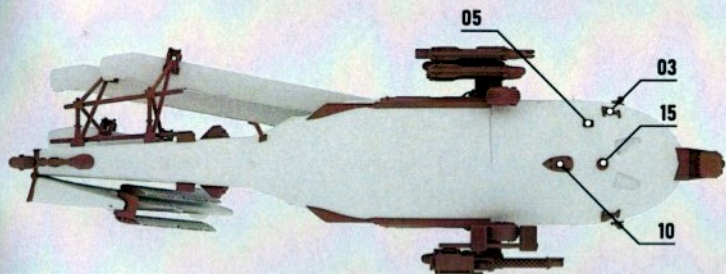
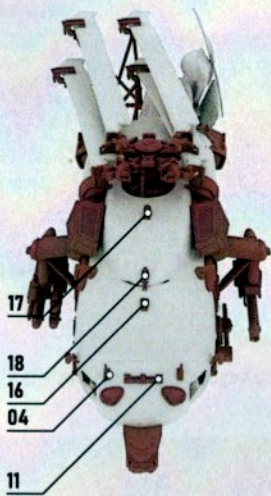
19. FLIR

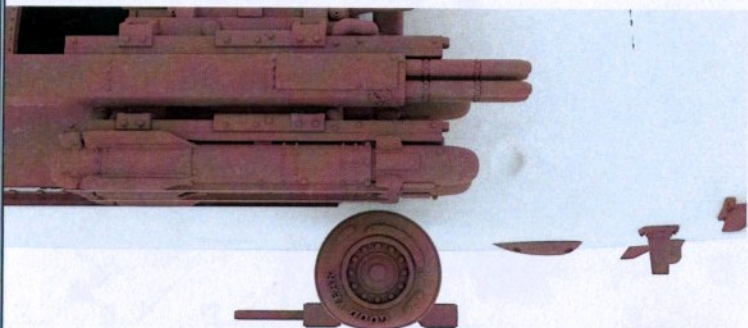


Option Parts Assembly

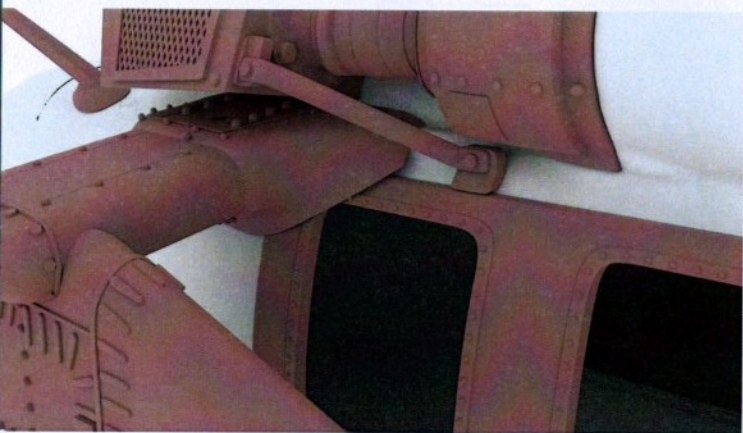
Attention on all Parts Location







Attention on the angle of the wheel (Gravity Effect)



Attention on the Pylon and Side-Door (Overlapping)

Additional

Special module with no PYLON

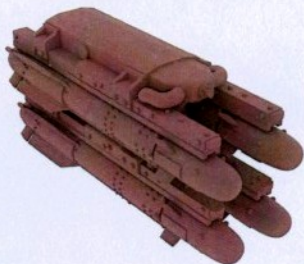


Special Decal for NAS FALLON rescue team

**Not included Weapon Set
(Need to purchase separately)**

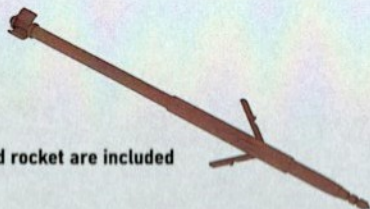


One weapon set can be used for 2 helicopters

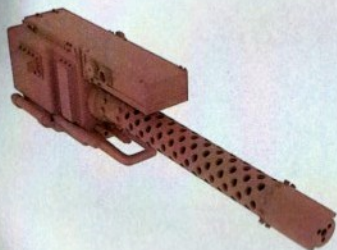


Three HellFire missiles PLUS 1 DAGR rocket pod mode Four HellFire missiles mode

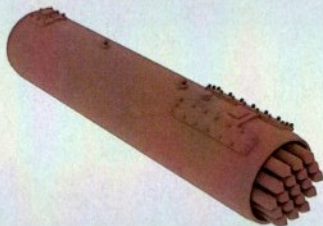
*** 2 possible combination can be used for missile launcher**



Two fired position Hydra-70 guided rocket are included



Three barrels galling gun For MH-60s



2 set of Rocket pod with Hydra-70 rocket

