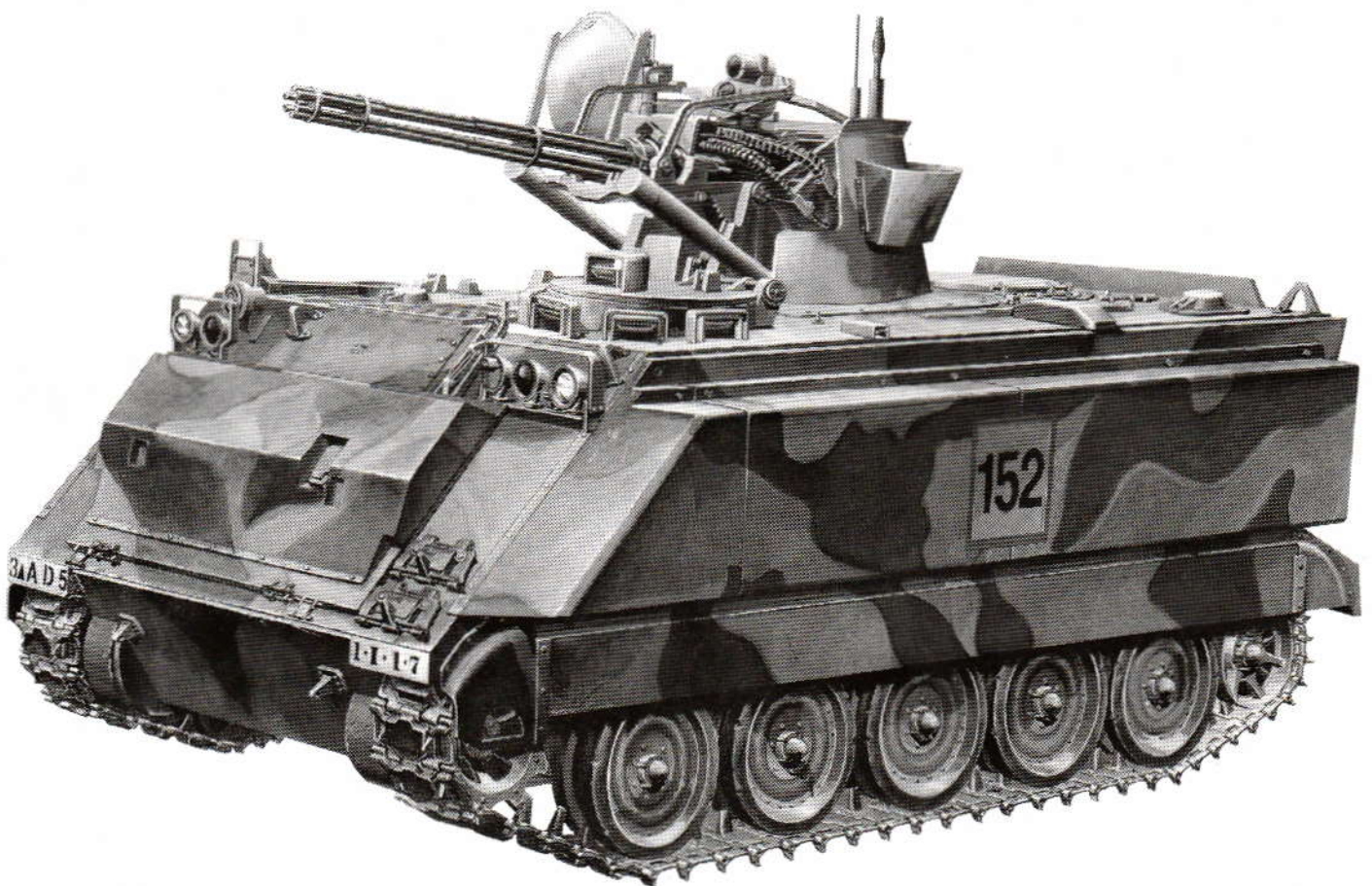


ACADEMY

HOBBY MODEL KITS

1/35th SCALE
M163A1/2 VULCAN SPAAG
(Self Propelled Anti Aircraft Gun)



SPECIFICATIONS

Chassis: M113 with add-on buoyancy panels attached to glacis plate and sides

Crew: Four men **Armament:** 1-Six barrel 20mm M61A1 Vulcan cannon

Ammunition: 2,280 rounds 20mm cannon shells

Rate of Fire: 1,000 or 3,000 rounds per minute (gunner selected)

Traverse: 360 degrees **Elevation:** -5 degrees to +80 degrees

Fire Control System: US Navy MK 20 Model 0 lead-computing sight
and range only radar

Combat weight: 12,310 Kg **Length:** 4.86 meters **Width:** 2.85 meters

Ground clearance: 41 meters **Maximum road speed:** 67 km/hr

Maximum water speed: 5.5 km/hr **Range:** 485 Km **Fording:** Amphibeous



Cement Parts
Coller
Kleben
Pegar
Incollare
Colar
Kleven



DO NOT cement
Ne pas coller
Nicht kleben
No pegar
Non incollare
Nao colar
Niet kleven



Cut away
Couper
Scheiden
Cortar
Tagliare
Cortar
Snijden

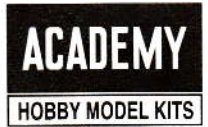


Optional parts
Choix
Auswahlmöglichkeit
Elección
Scelta
Opcao
Keuze



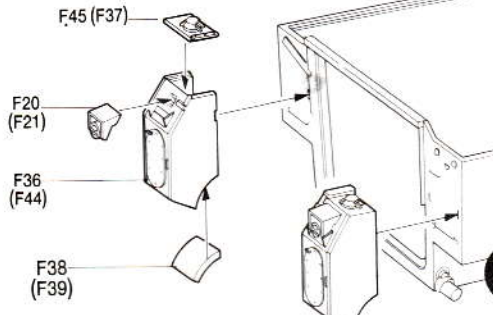
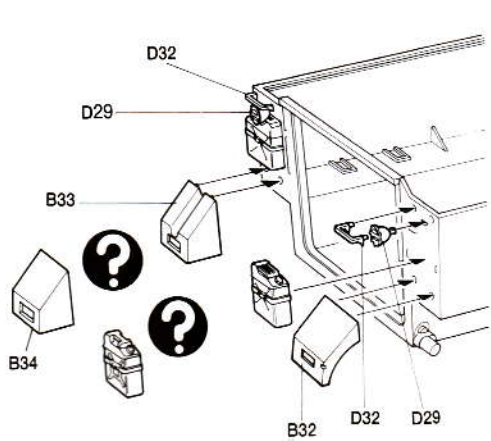
3

Repeat operation
Répéter l'opération
Vorgang wiederholen
Repitir la operación
Ripetere
Repitir a operação
Herhalen



① HULL ASSEMBLY

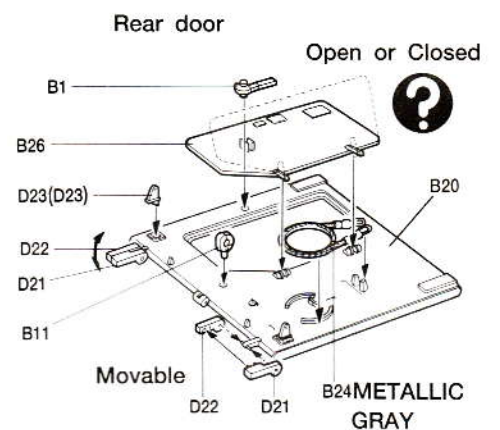
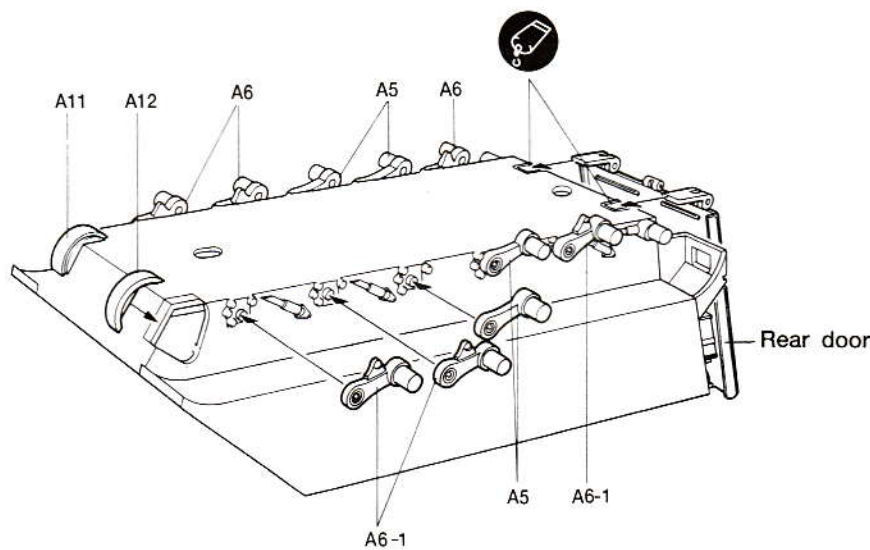
()=Part number for opposite side



Tail Light
CLEAR
RED
BLACK

Fuel Can
D6
D15
D11, D12
OLIVE DRAB

Water Can
D14
D9
D10
FLAT BLACK

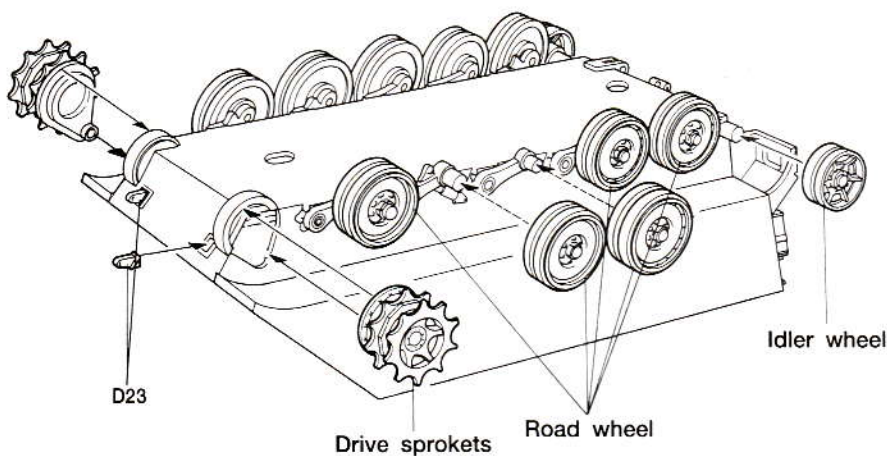


Road Wheel
A10
Poly part2
A14
FLAT BLACK

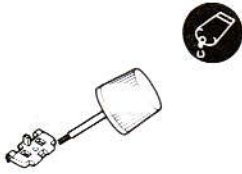


Idler wheel
A9
A8
2

Drive sprockets
A2
A1
A13
2

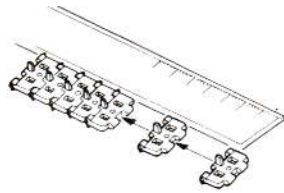


② TREAD ASSEMBLY



1. Lightly cement the tread blocks together with Solvent type glue, Not Cyanoacrylate type. Each tread uses 60 blocks.

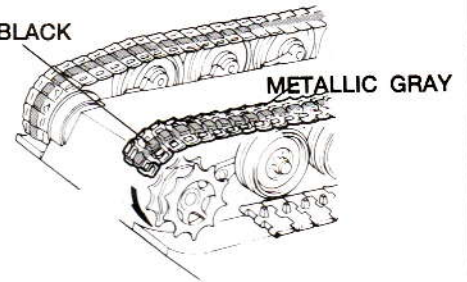
Note: Sets of 6 to 10 blocks are easier to handle than complete treads of 60.



2. Line up the edge of the blocks against a straightedge as shown.

2

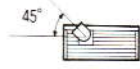
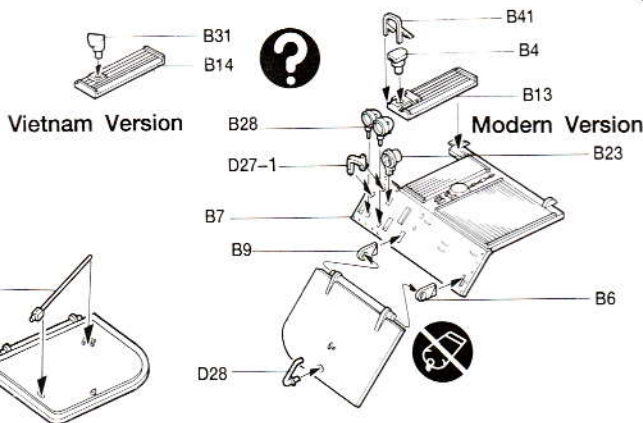
FLAT BLACK



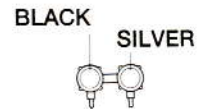
3. Before the cement completely dries, roll the treads around the drive sprockets and idler wheels.

4. Cement the loose ends together and set the hull on a flat surface and put "slack" into the treads that are on top of the road wheels. When satisfied with position, allow the cement to completely dry before handling.

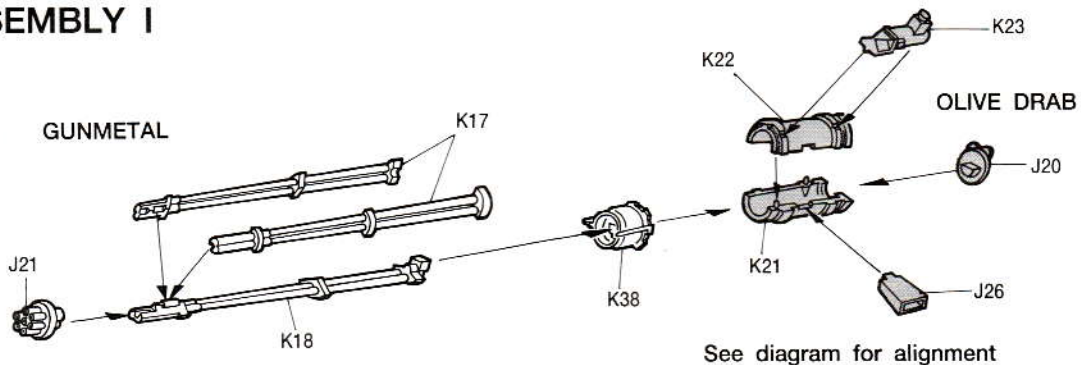
③ ENGINE COVER ASSEMBLY



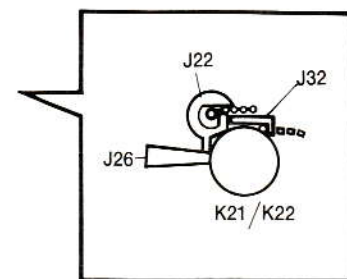
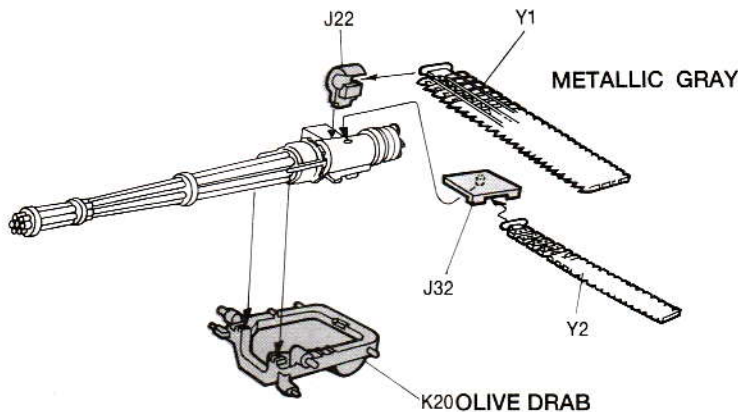
B14 B31
Note angle



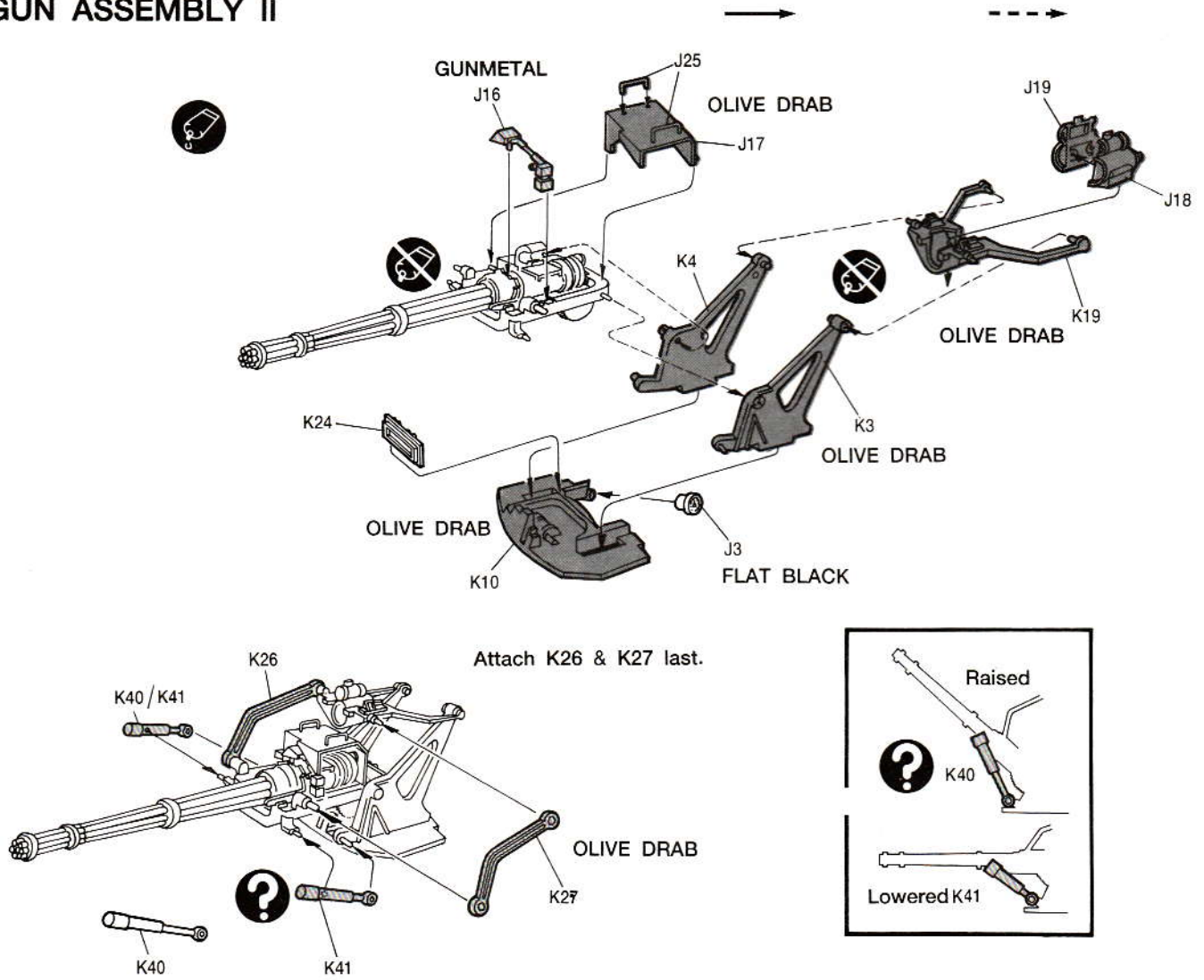
④ GUN ASSEMBLY I



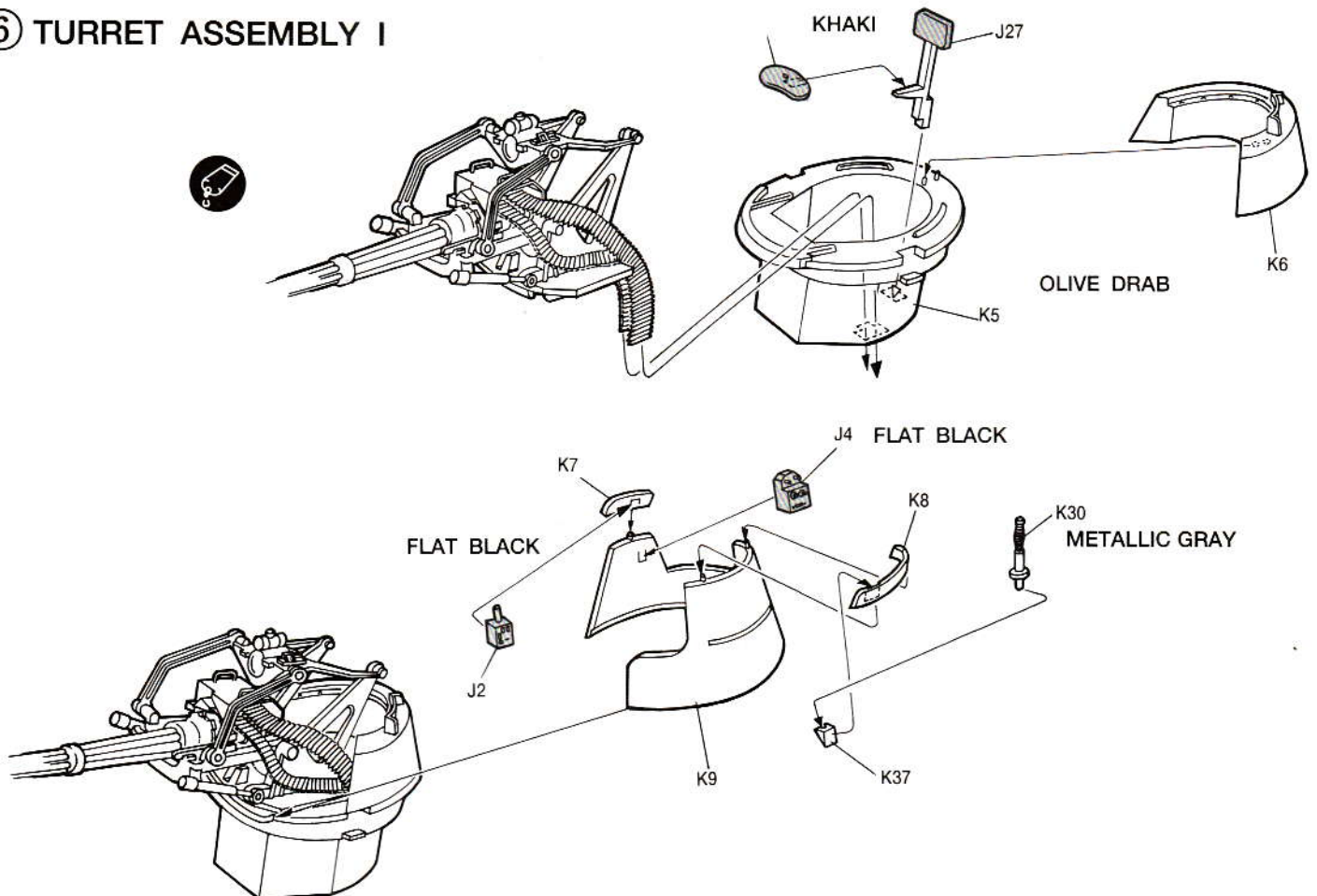
See diagram for alignment



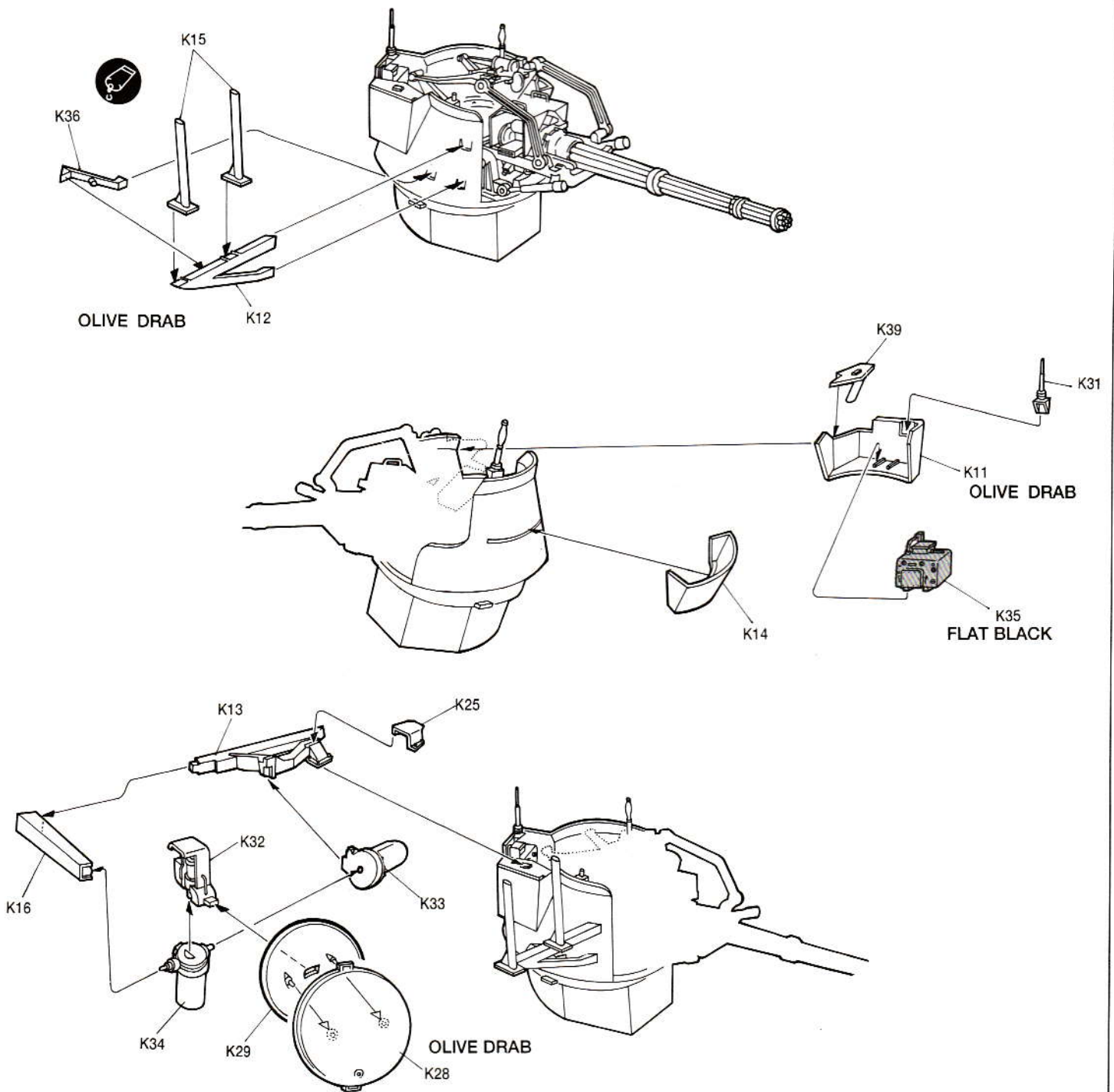
⑤ GUN ASSEMBLY II



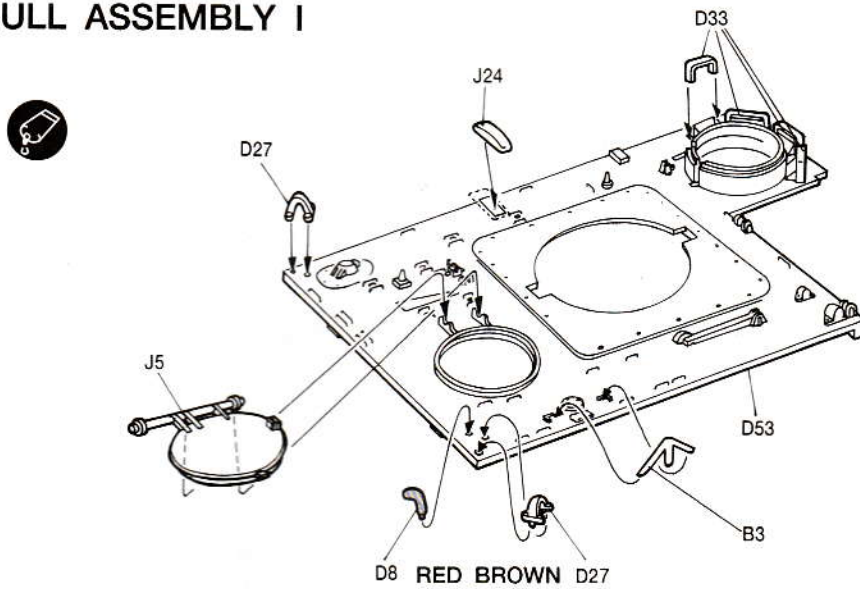
⑥ TURRET ASSEMBLY I



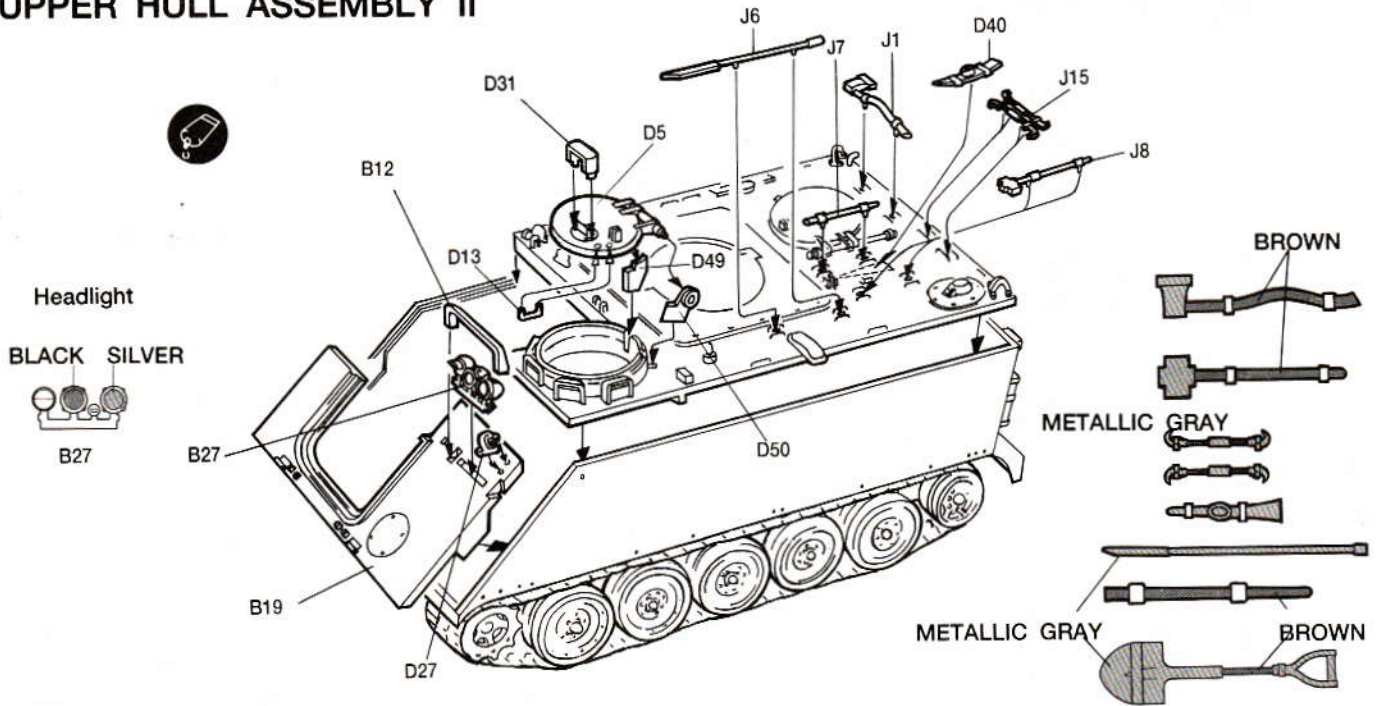
⑦ TURRET ASSEMBLY II



⑧ UPPER HULL ASSEMBLY I

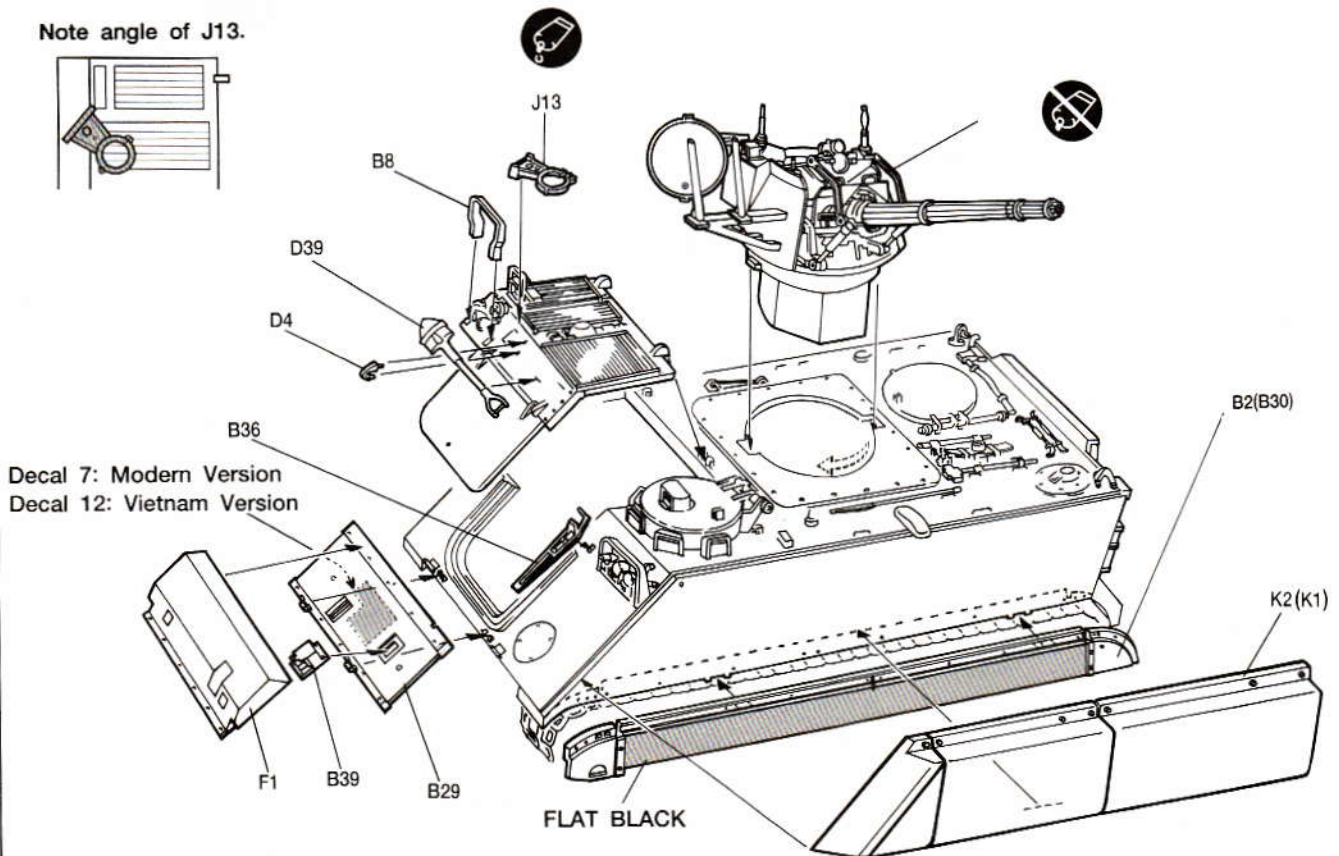


⑨ UPPER HULL ASSEMBLY II

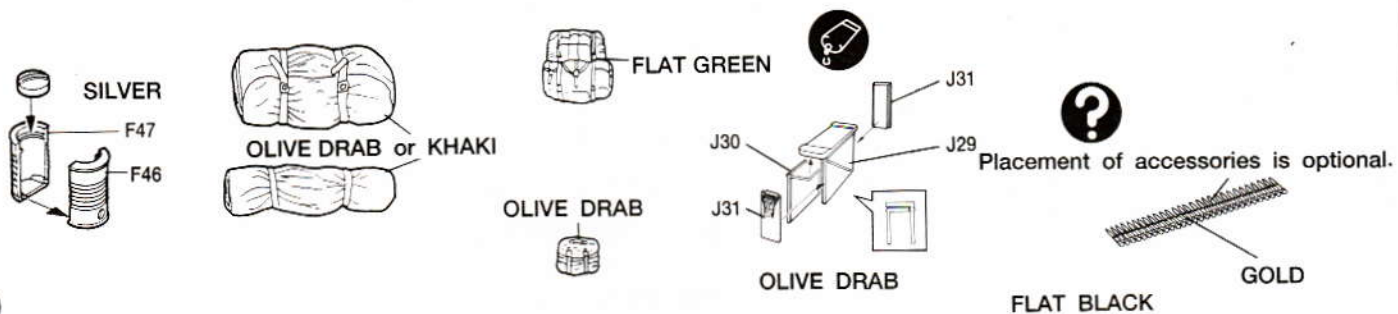


⑩ FINAL ASSEMBLY

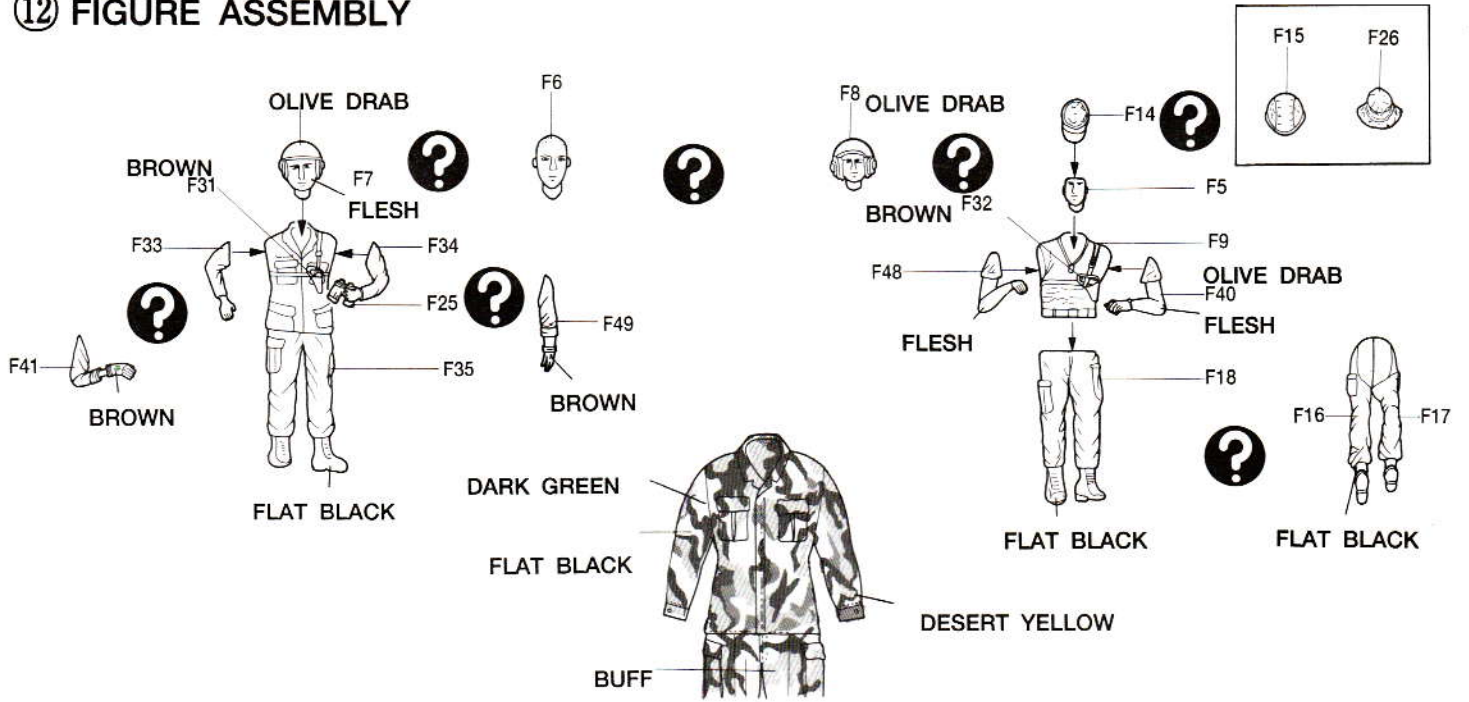
Note angle of J13.



⑪ ACCESSORY ASSEMBLY

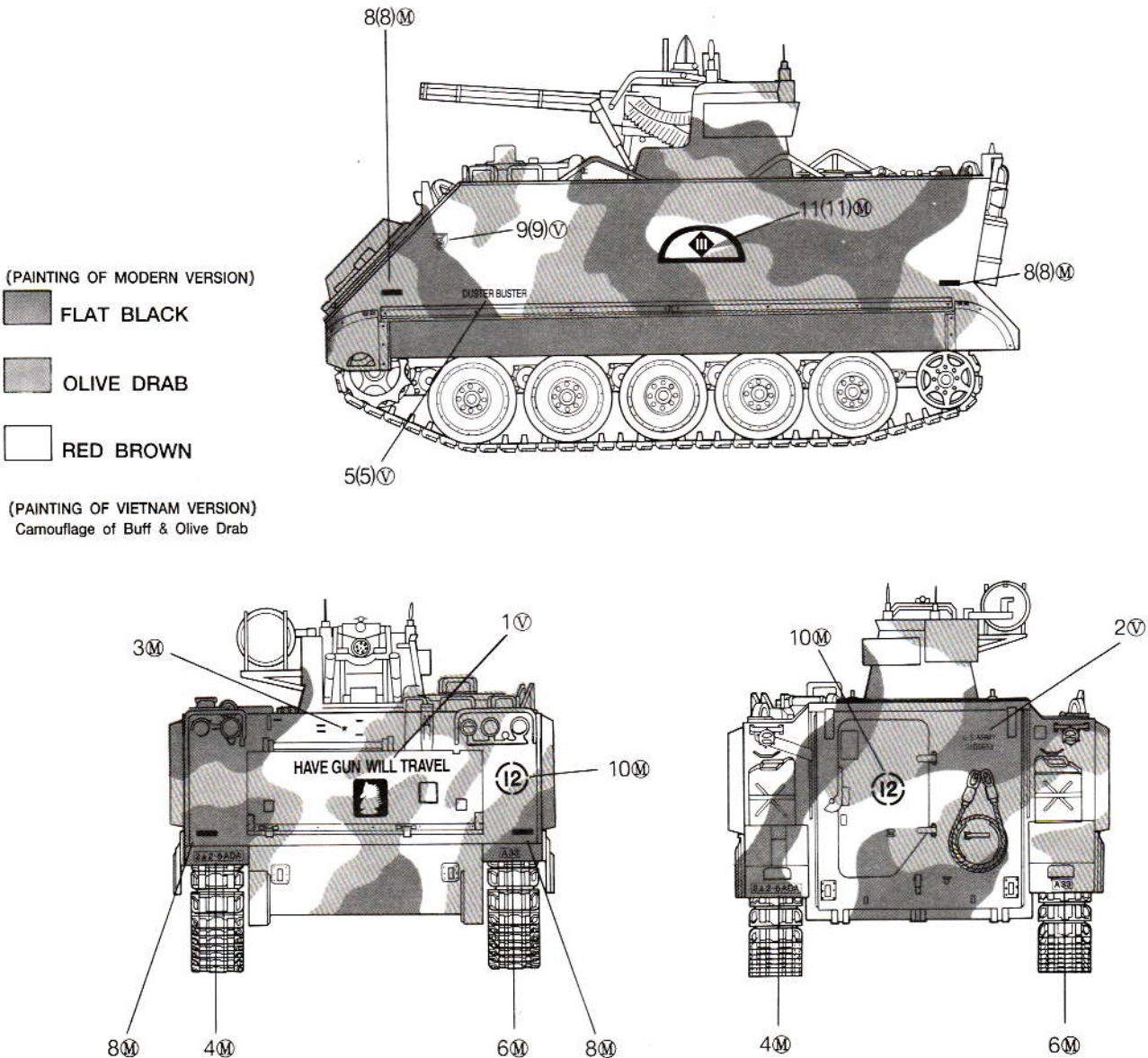


12 FIGURE ASSEMBLY

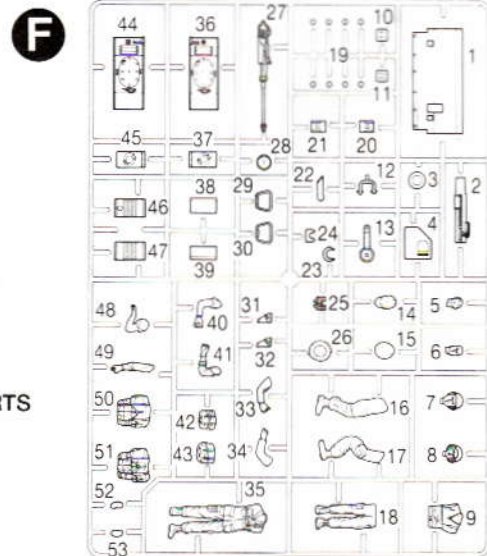
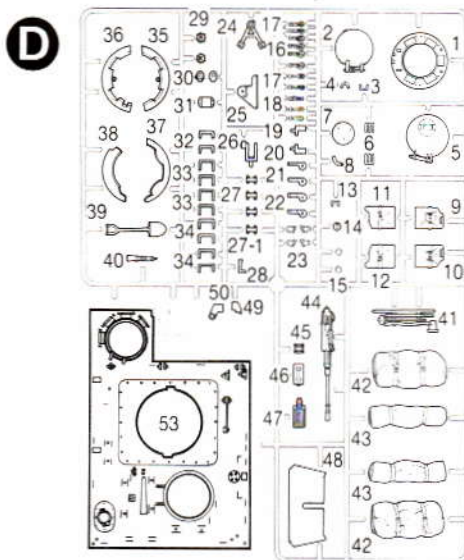
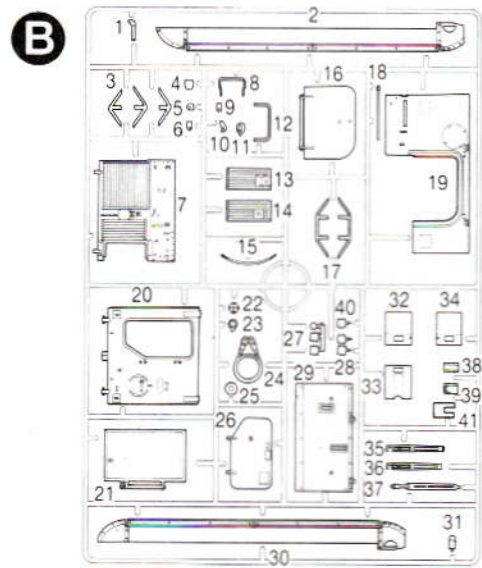
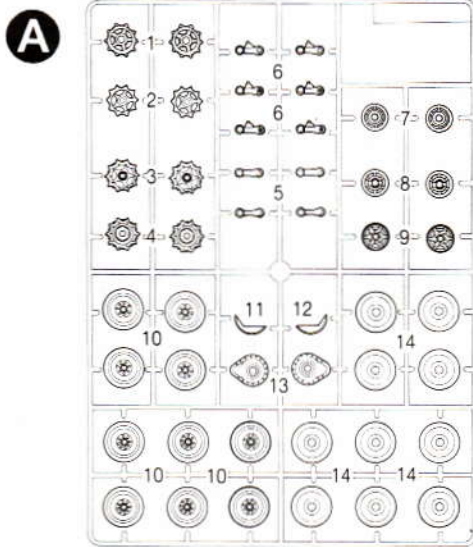


PAINTING AND DECAL PLACEMENT

Decals with \textcircled{M} after the number designate Modern Version Decals.
Decals with \textcircled{V} after the number designate Vietnam Version Decals.



PARTS LOCATING DIAGRAM



POLY PARTS

