

1/35 R.O.K. & U.S. ARMY M48A5·K

ACADEMY

HOBBY MODEL KITS



THE M-48 PATTON MEDIUM TANK

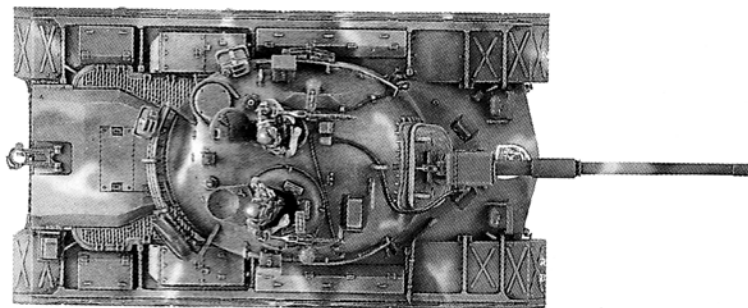
It is doubtful that any other tank has had such a long history of development, production and use. Based on the 1940 design of the M-26 Pershing tank, introduced late in World War II, the M-46 entered US Army service in 1948. In 1951, the "improved" M-47 was introduced, but a multitude of problems kept this tank from reaching its potential. Finally, in 1953 the first of the M-48 variants was placed into service following incorporation of numerous refinements designed to improve the reliability and performance of the M-47.

Serving with distinction in Korea and Vietnam, the M-48A and its later versions were exported to almost two dozen countries, many of which still use the M-48 as their main battle tank. As production of the M-48's continued, many modifications were made to the power-train, fuel supply, weaponry and crew. For most countries, the M-48's modifications were the ultimate version, but in the Republic of Korea and the U.S., additional improvements have been added and existing inventories of M-48 Pattons have been remanufactured to bring them up to current standards. It is anticipated that the additional countries will embark on M-48 modernization programs such as the Korean operation. The ROK version feature side armor skirts and the Jonell fire control/night vision targeting system. The ROK version is further distinguished by the addition of a wind sensor on the rear half of the turret.



U.S.M48A5

1355



R.O.K.M48A5 (LATE)



Cement Parts
Coller
Kleben
Pegar
Incollare
Colar
Kleven



DO NOT cement
Ne pas coller
Nicht kleben
No pegar
Non incollare
Nao colar
Niet kleven



Cut away
Couper
Scheiden
Cortar
Tagliare
Cortar
Snijden



Optional parts
Choix
Auswahlmöglichkeit
Elección
Scelta
Opcao
Keuze



3

Repeat operation
Répéter l'opération
vorgang wiederholen
Repitir la operación
Repeter
Repitir a operação
herhalen

1 Wheel Assembly

14



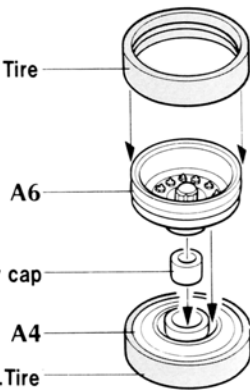
P.V.C Tire



Poly cap



P.V.C.Tire



A9



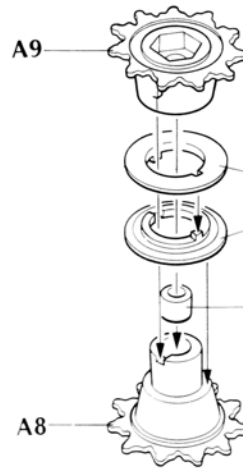
2

A1

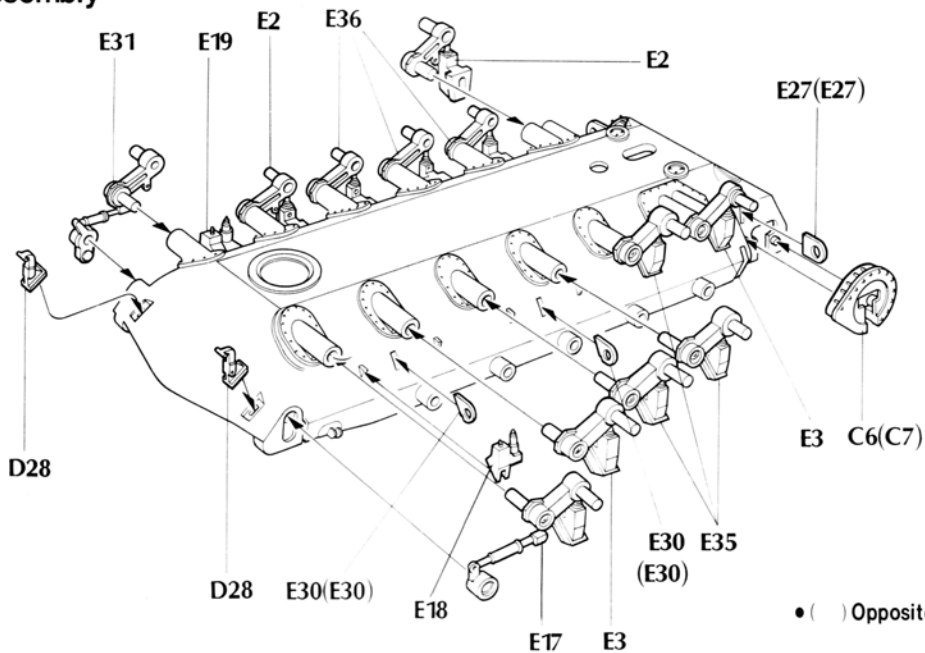
Poly Cap



A8

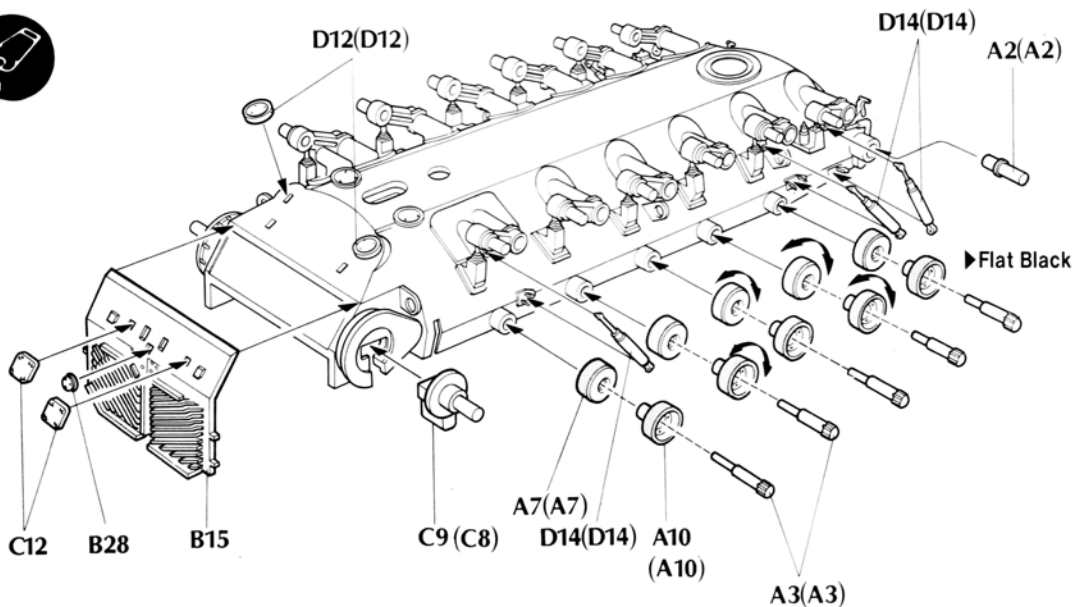


2 Suspension Assembly

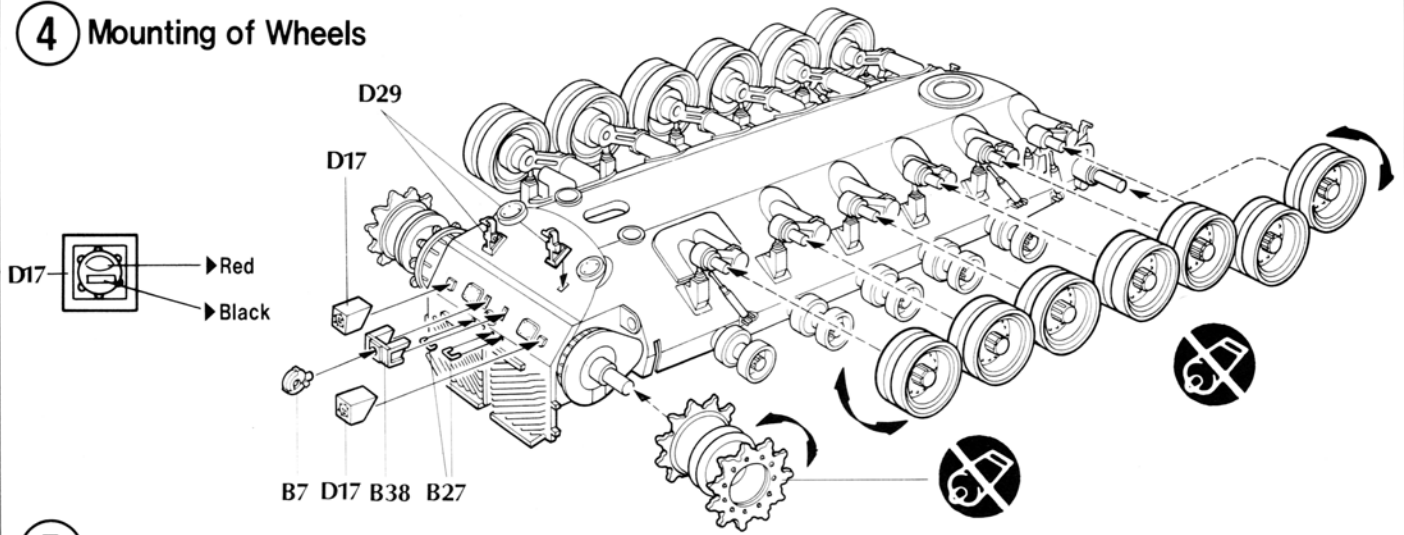


• () Opposite number.

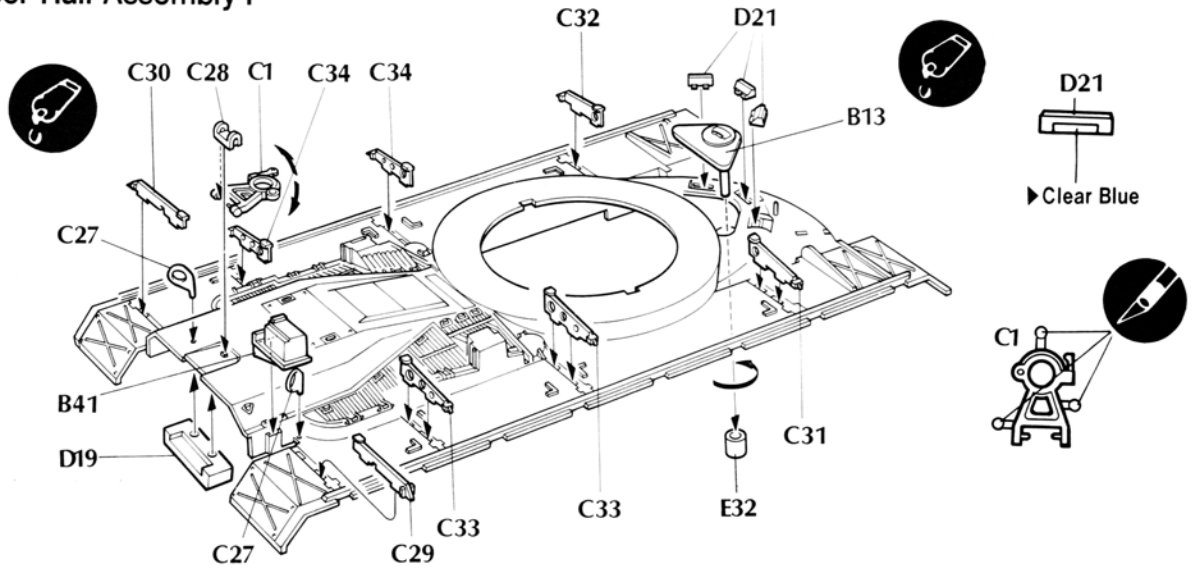
3 Support Rollers Assembly



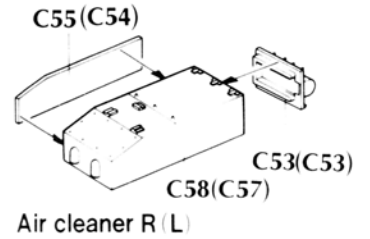
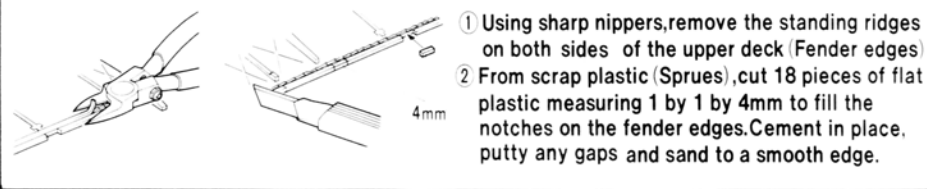
4 Mounting of Wheels



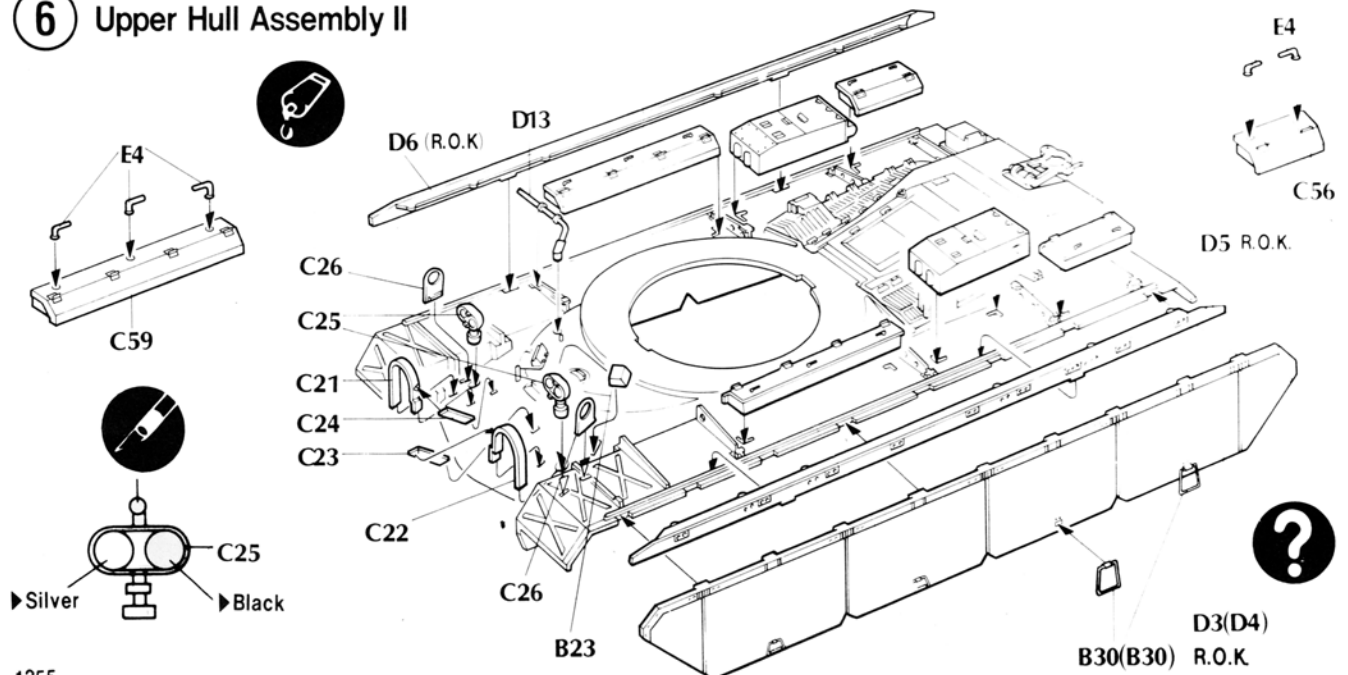
5 Upper Hull Assembly I



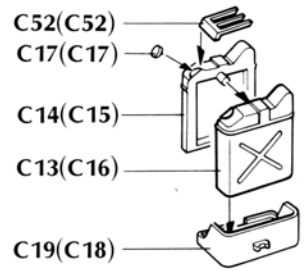
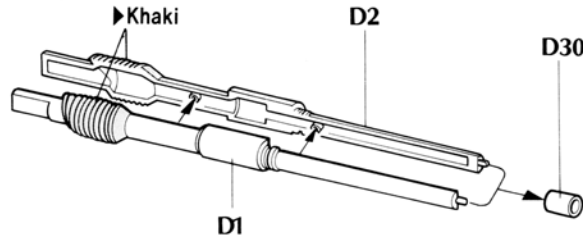
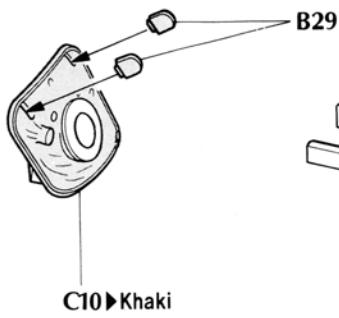
DETAIL POINT FOR U.S.ARMY M48-A5 VERSION (WITHOUT SKIRTS)



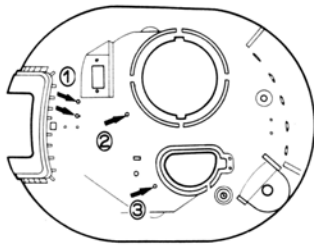
6 Upper Hull Assembly II



7 Main Barrel Assembly

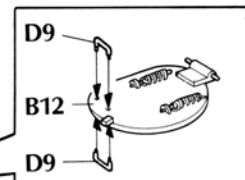
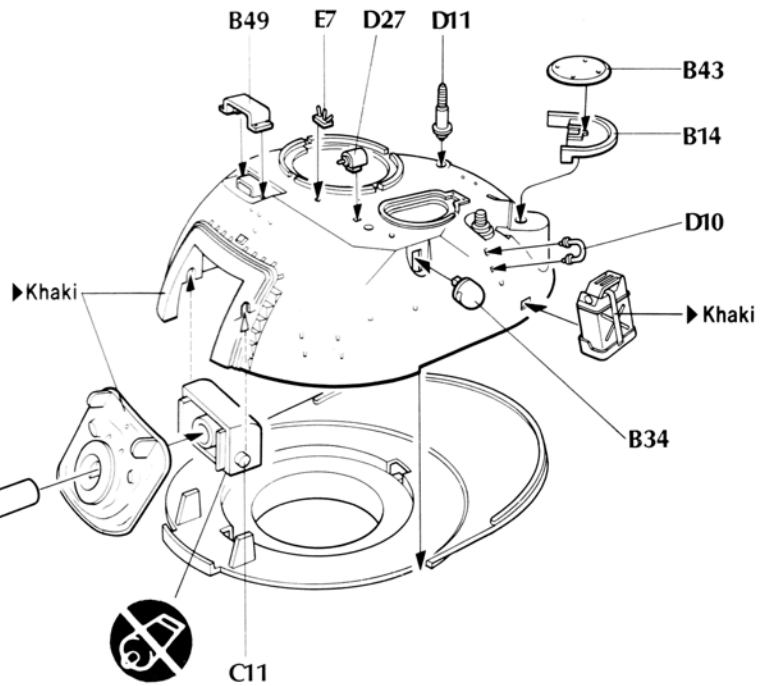


8 Turret Assembly I

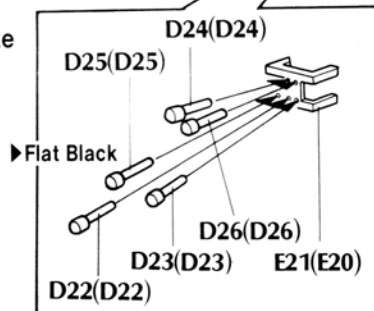


Choose a Version and make holes according to diagram:

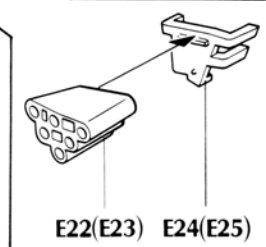
- R.O.K. Late : ①, ②, ③
- R.O.K. Early : ①, ②
- U.S. Army : ①, ③



■ R.O.K. Smoke discharger left (right)



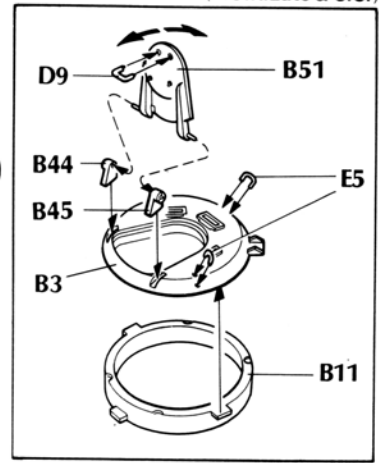
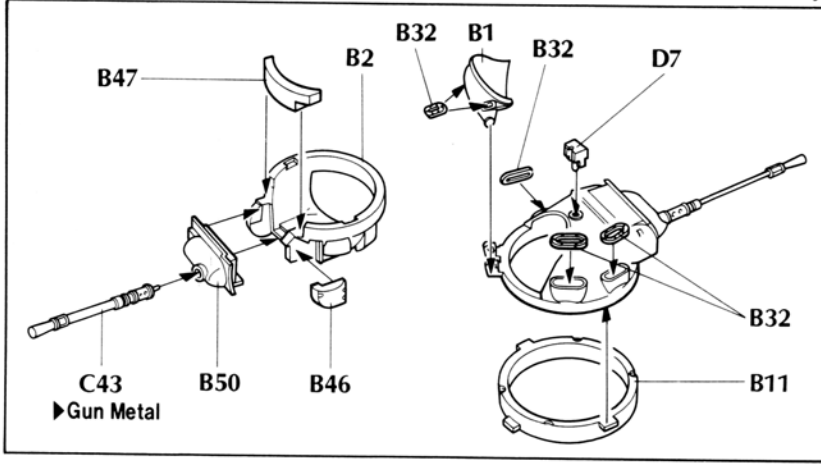
■ U.S. Smoke discharger L (R)



9 Cupola & Search Light Assembly

(R.O.K. Early)

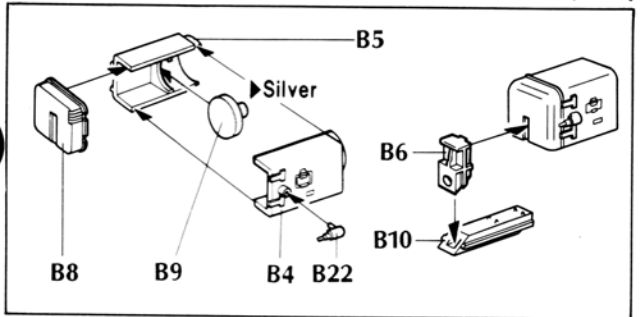
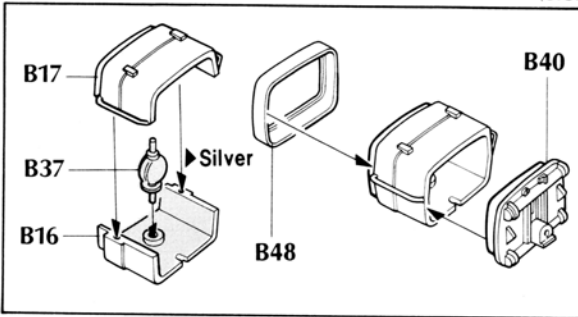
(R.O.K. Late & U.S.)



Search Light

(U.S.)

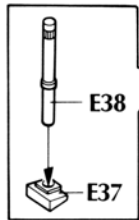
(R.O.K.)



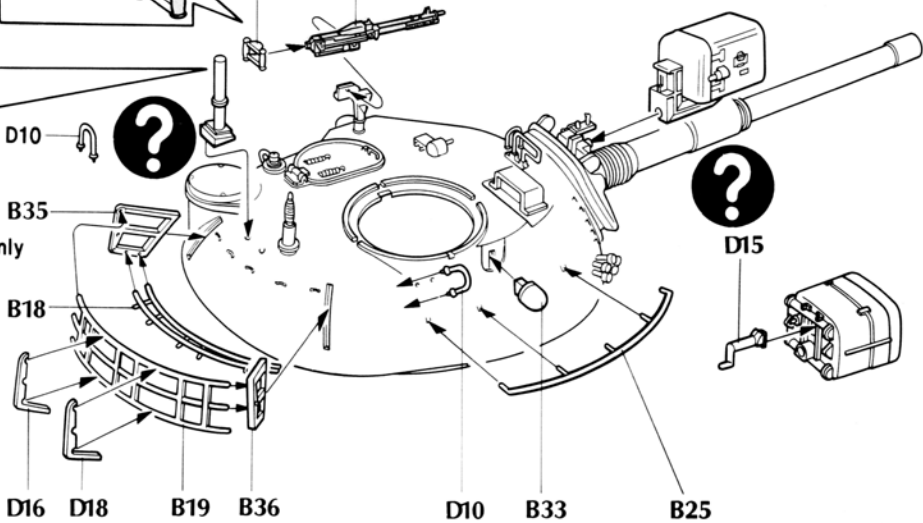
10 Turret Assembly II

■ C42, C44

▶ Red Brown C42 C48 ▶ Gun Metal

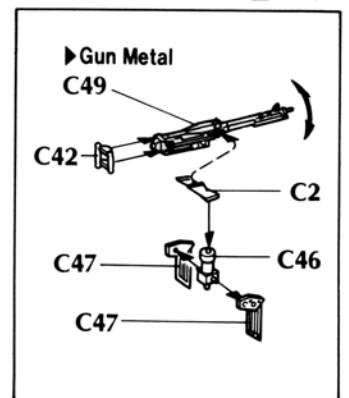
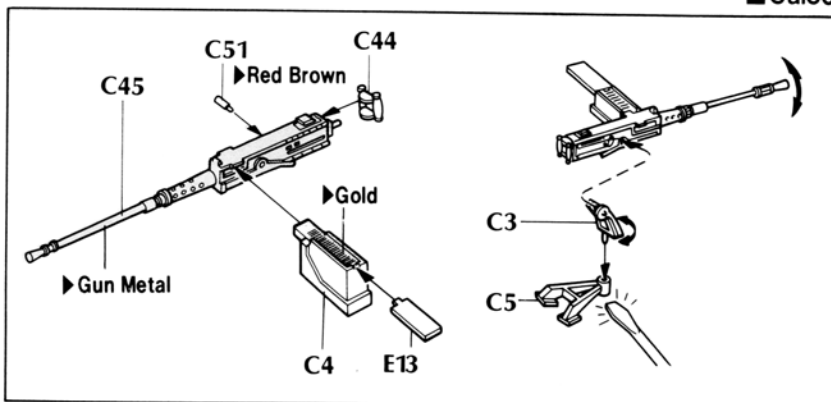


• Wind sensor: R.O.K. only

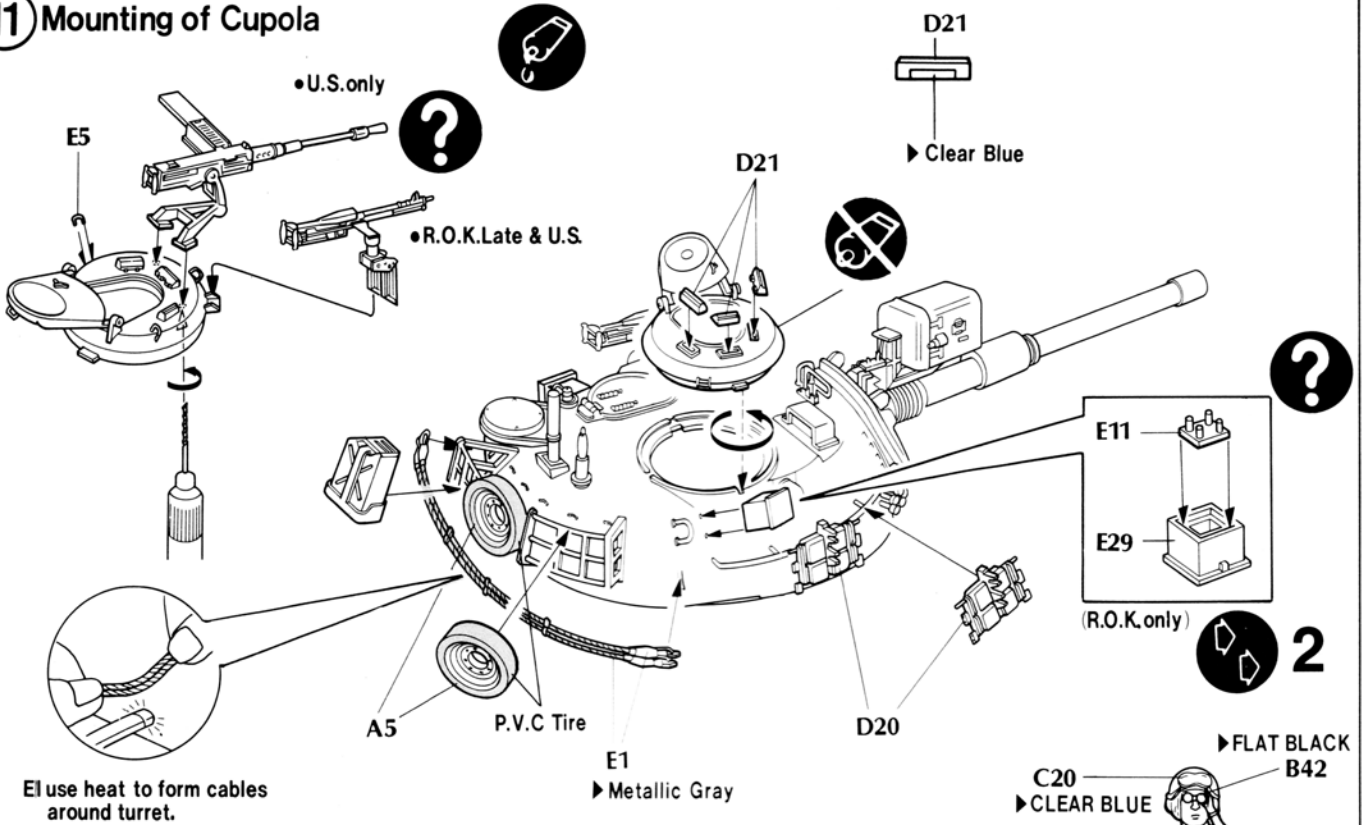


■ Cal50

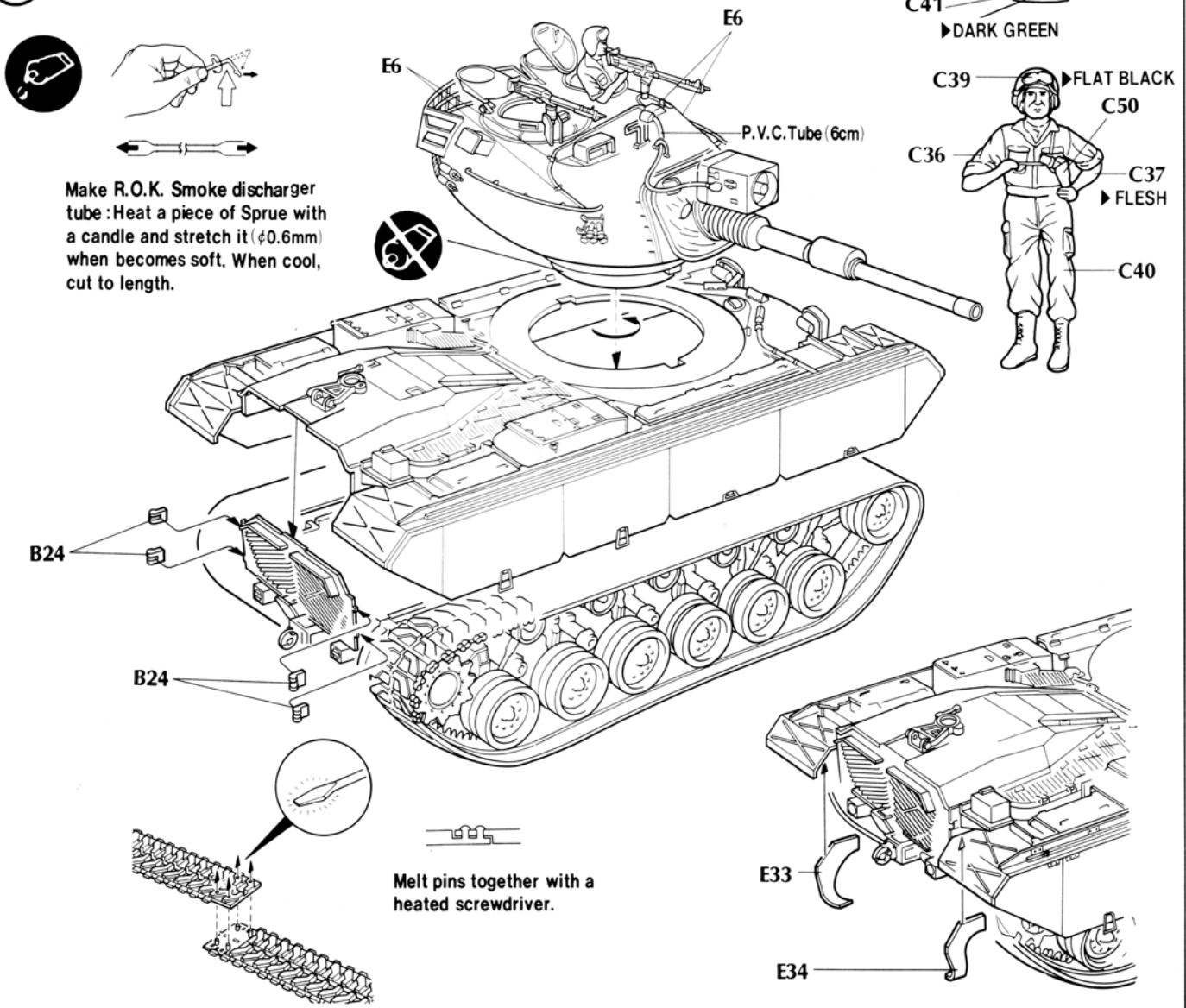
■ M60D



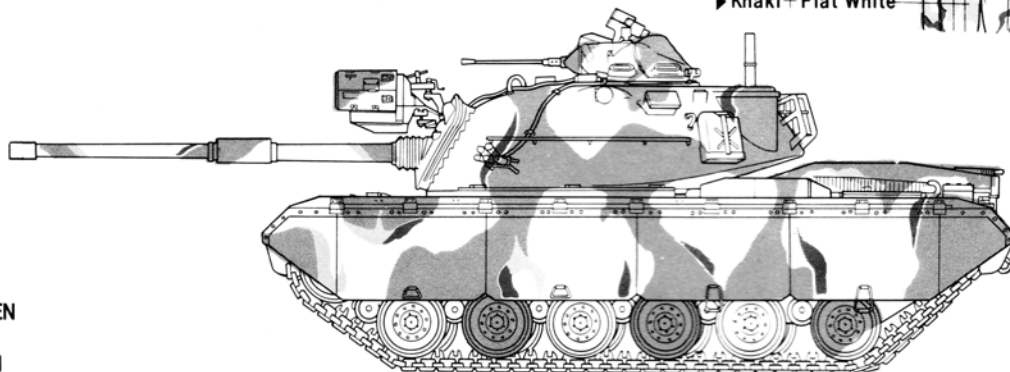
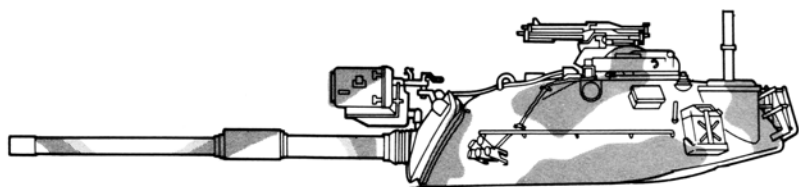
11 Mounting of Cupola



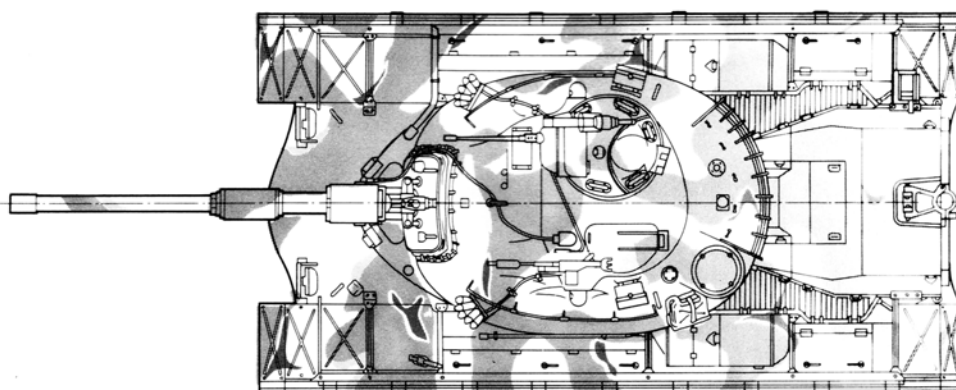
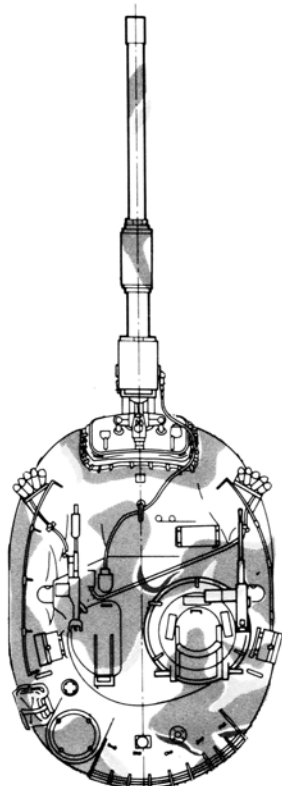
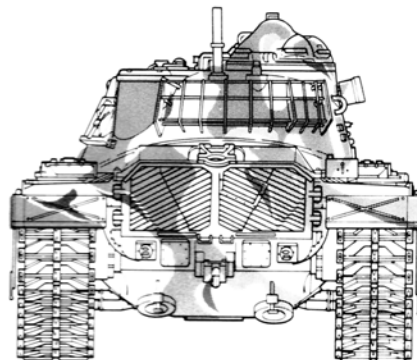
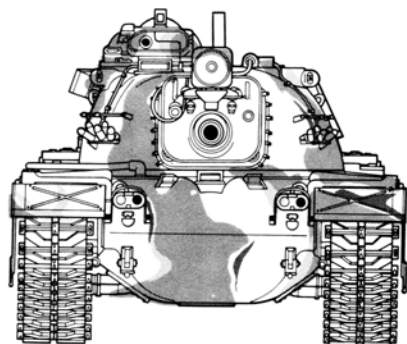
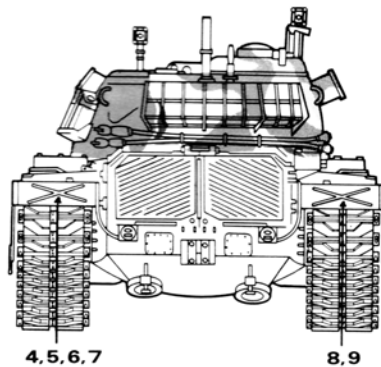
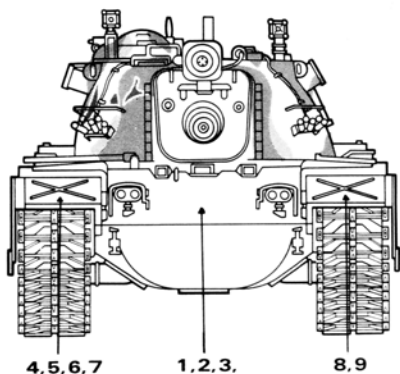
12 Final Assembly



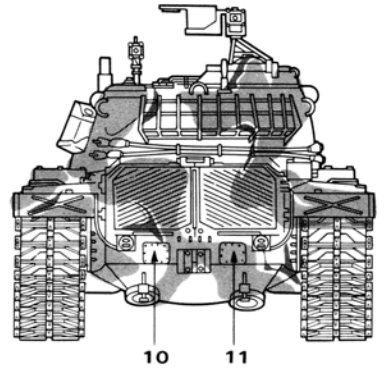
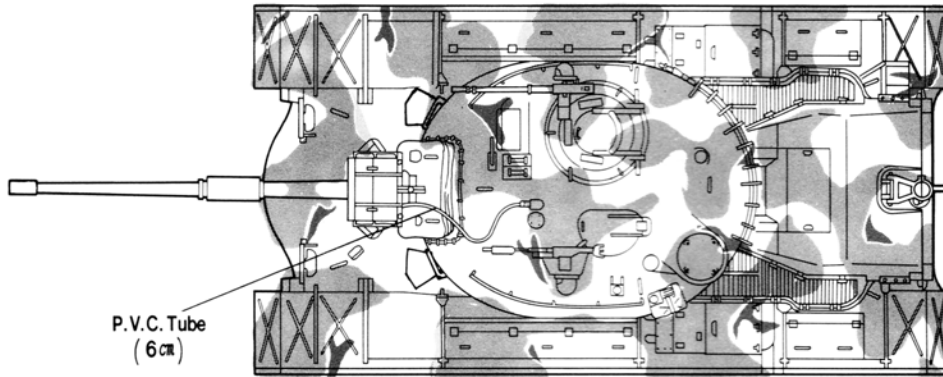
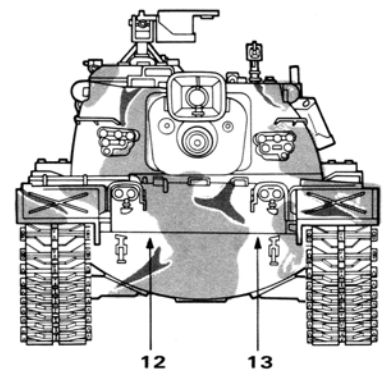
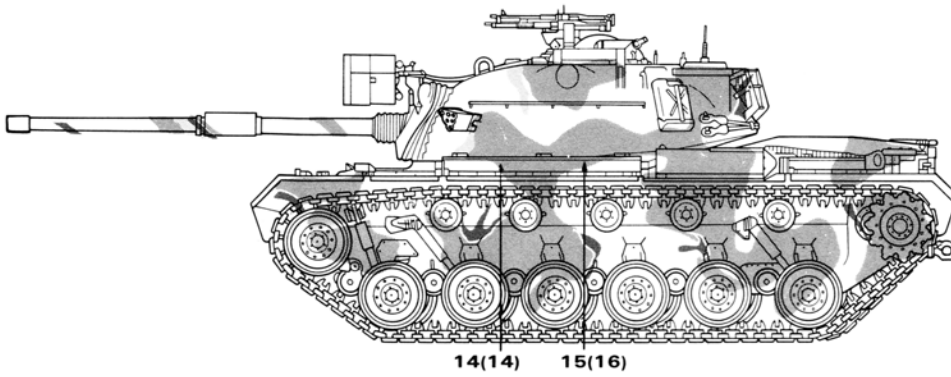
M48A5K Painting and Decal Placement (R.O.K.Army)



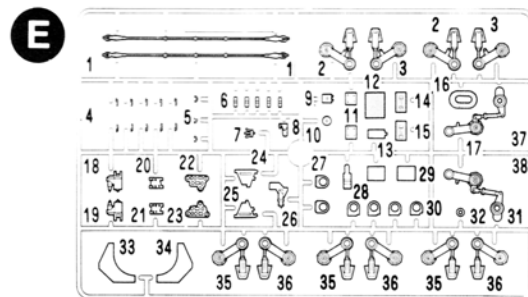
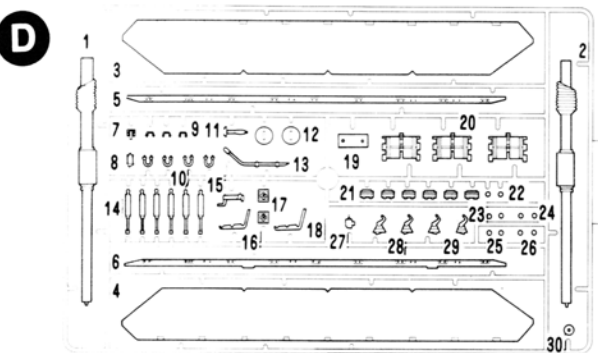
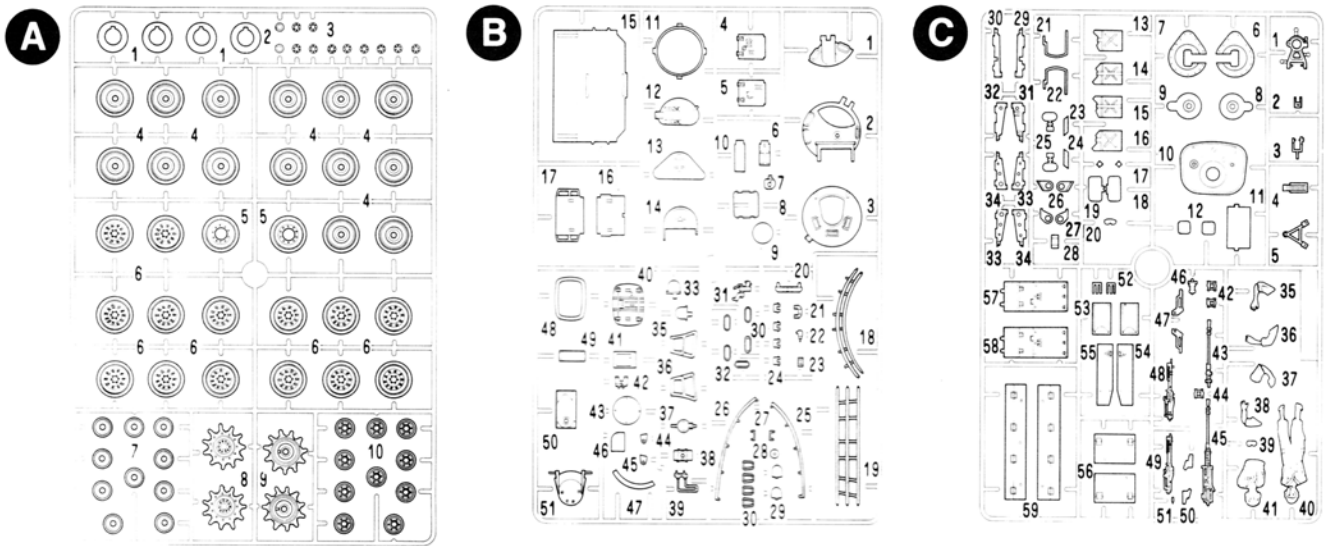
- KHAKI GREEN
- FLAT EARTH
- BUFF
- FLAT BLACK



M48-A5 Painting and Decal Placement



Parts Locating Diagram



- Upper Hull
- Lower Hull
- P.V.C. Tires
- P.V.C. Tube
- Tracks
- Decal
- Instruction sheet

● Unnecessary parts : E8, 12, 16

