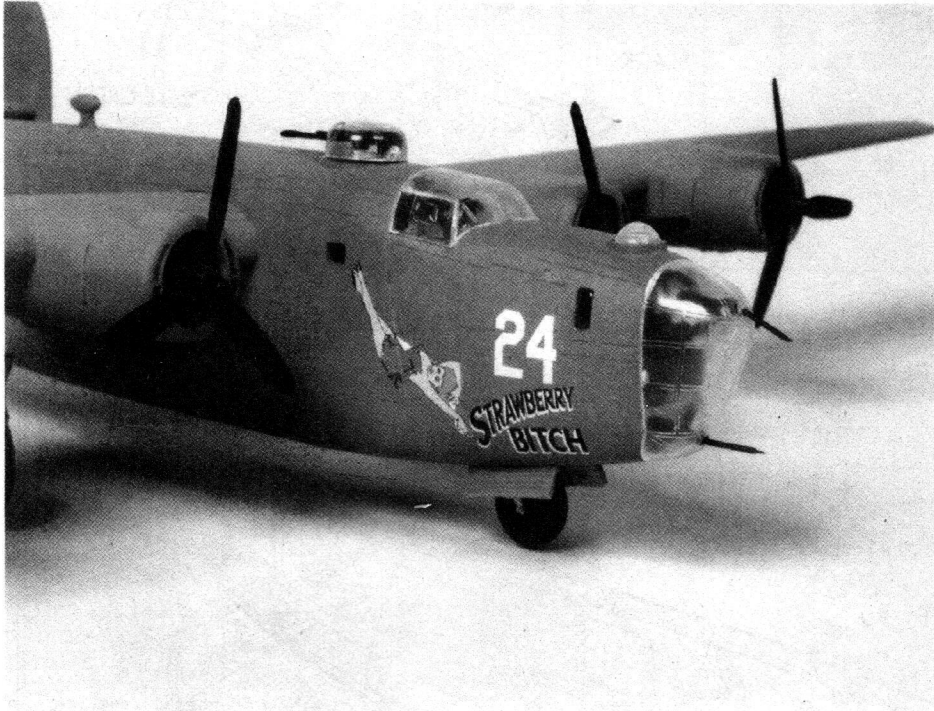


STRAWBERRY BITCH CONSOLIDATED B-24D LIBERATOR



MINICRAFT
MODEL KITS

Legends in the making

After the Japanese attack on Pearl Harbor, The U.S. Army Air Force was ordered to launch retaliatory attacks on the Japanese home islands by President Roosevelt. At Fort Myers, Florida, Colonel Harry E. Halverson was put in charge of a task force to accomplish these attacks. The unit consisted of twenty three new B-24 Liberator bombers, to be supported by more than 230 officers and enlisted men. The code name HALPRO (Halverson Project) was assigned to the organization which, eventually became known as the 376th Bombardment Group. The Chinese offered a base on the mainland, but by the time the unit arrived in the Middle East, the proposed location had been captured by Japanese forces.

In the meantime the Germans were preparing to attack Allied forces in North Africa. HALPRO was then directed to a new location in Egypt from which the group could attack German shipping and their North African ports which were supporting General Rommel's forces. The Halverson Project was renamed the First Provisional Bombardment Group on 20 June 1942, and as the 376th Bombardment Group, selected the nickname "Liberandos". By early 1943, the 367th B.G. was fully formed and was composed of the 512th, 513th, 514th and 515th Squadrons. It became the first American heavy bombardment group to operate in the Middle East Theater.

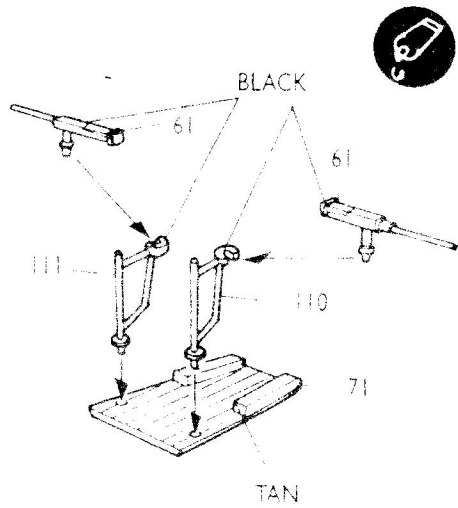
The first targets were German and Italian supply lines between Italy and North Africa, airfields, and port facilities. As experience was gained long range attack were made against critical oil refineries, and weapons manufacturers in Austria, Czechoslovakia, Hungary, and Yugoslavia. One of the most dangerous and historic raids undertaken by the Librandos was the daring low level raid against Romania's Ploesti Oil Fields in August, 1943.

During their four years of operations, the 376th flew 451 missions, received three Distinguished Unit Citations and 15 campaign awards, destroying 220 enemy aircraft in aerial combat with losses of 1,479 personnel and 169 aircraft.

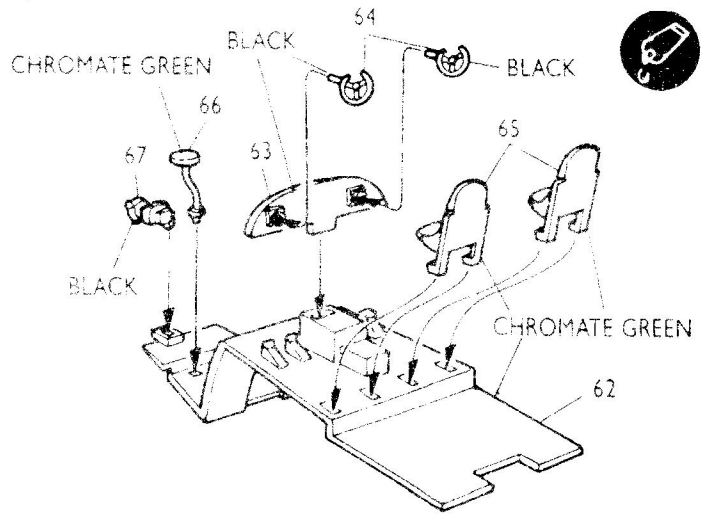
The "Strawberry Bitch", named, in part, because of the pinkish-tinted "desert sand" paint scheme, flew combat missions from North Africa in 1943-44 with the 512th Bomb Squadron. It was flown to the U.S. Air Force Museum in May 1959. There it was restored and placed on permanent display.

But beware! The Strawberry Bitch is thought to be haunted! It is often thought that some surviving military weapons have an aura of mystery, a feeling of the occult. No one knows for sure who this spirit is, but since the lower turret guns sometimes rattle, it is thought he might have been an unfortunate gunner. It was reported that this ghost once hit a custodian in the face, so stand back.

1 GUN ASSEMBLY

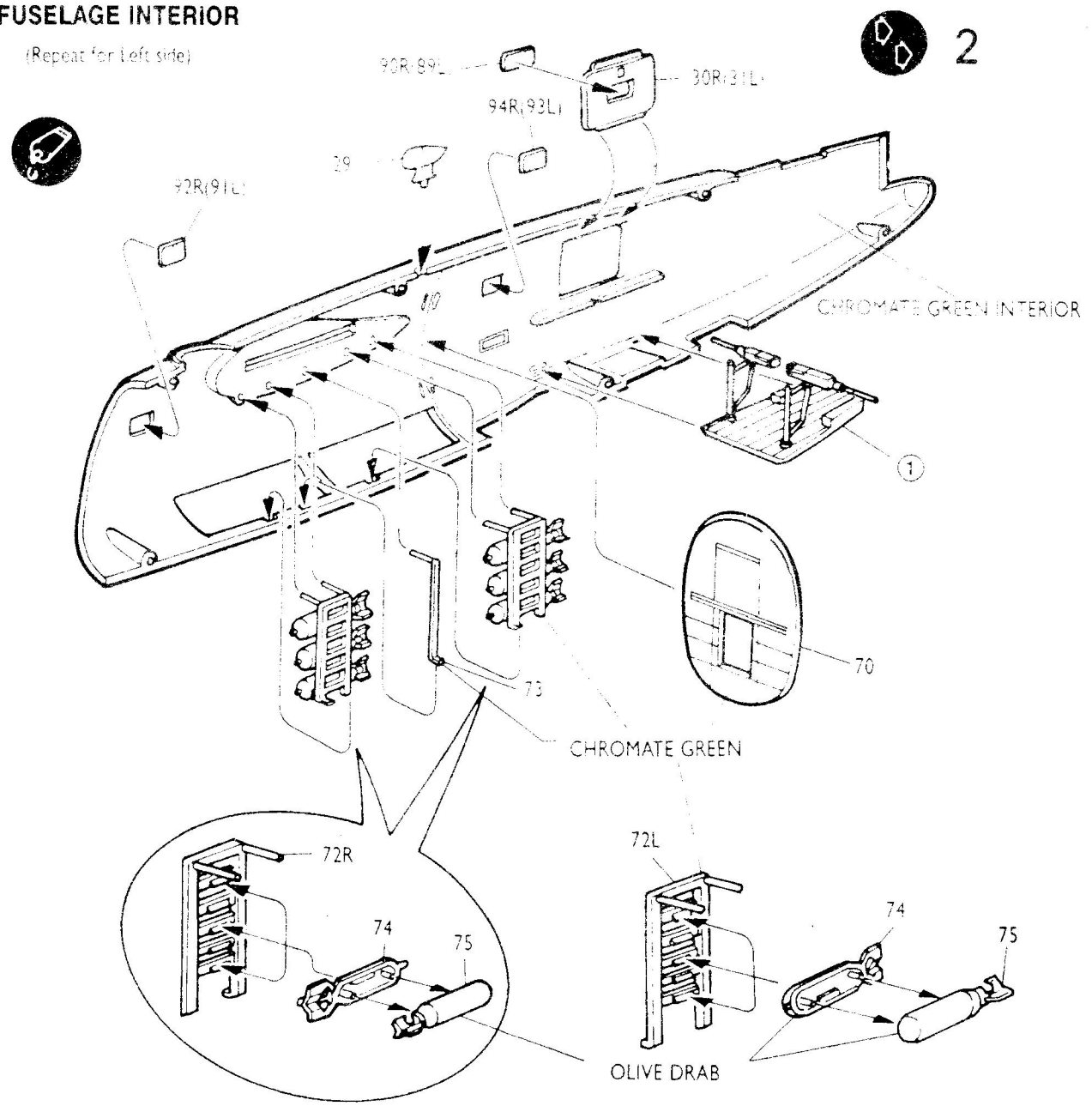


2 COCKPIT

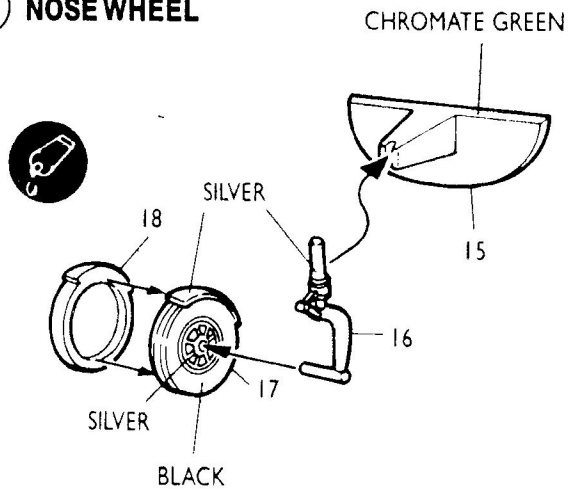


3 FUSELAGE INTERIOR

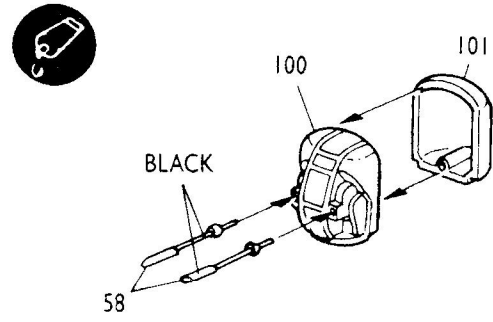
(Repeat for Left side)



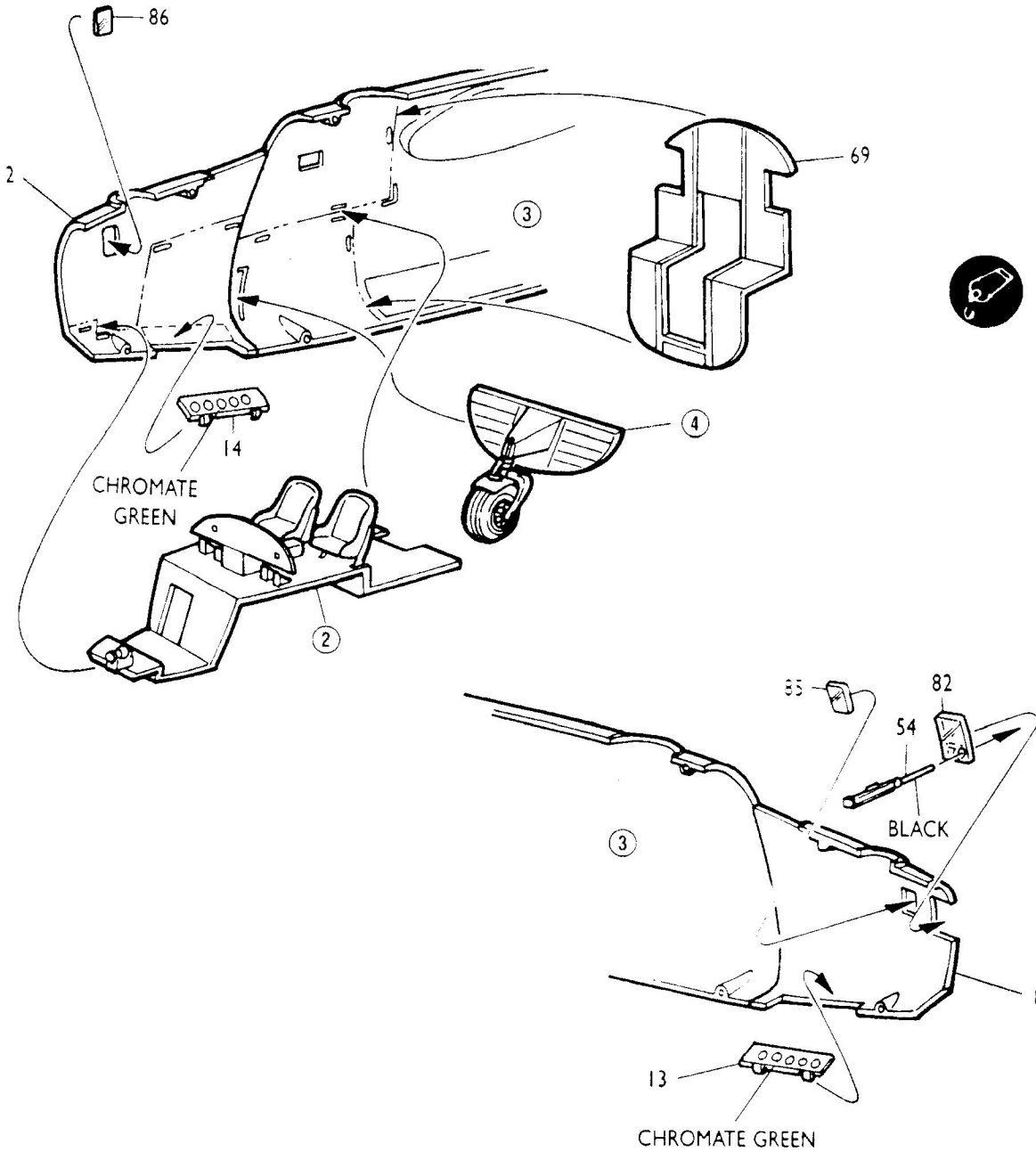
4 NOSEWHEEL



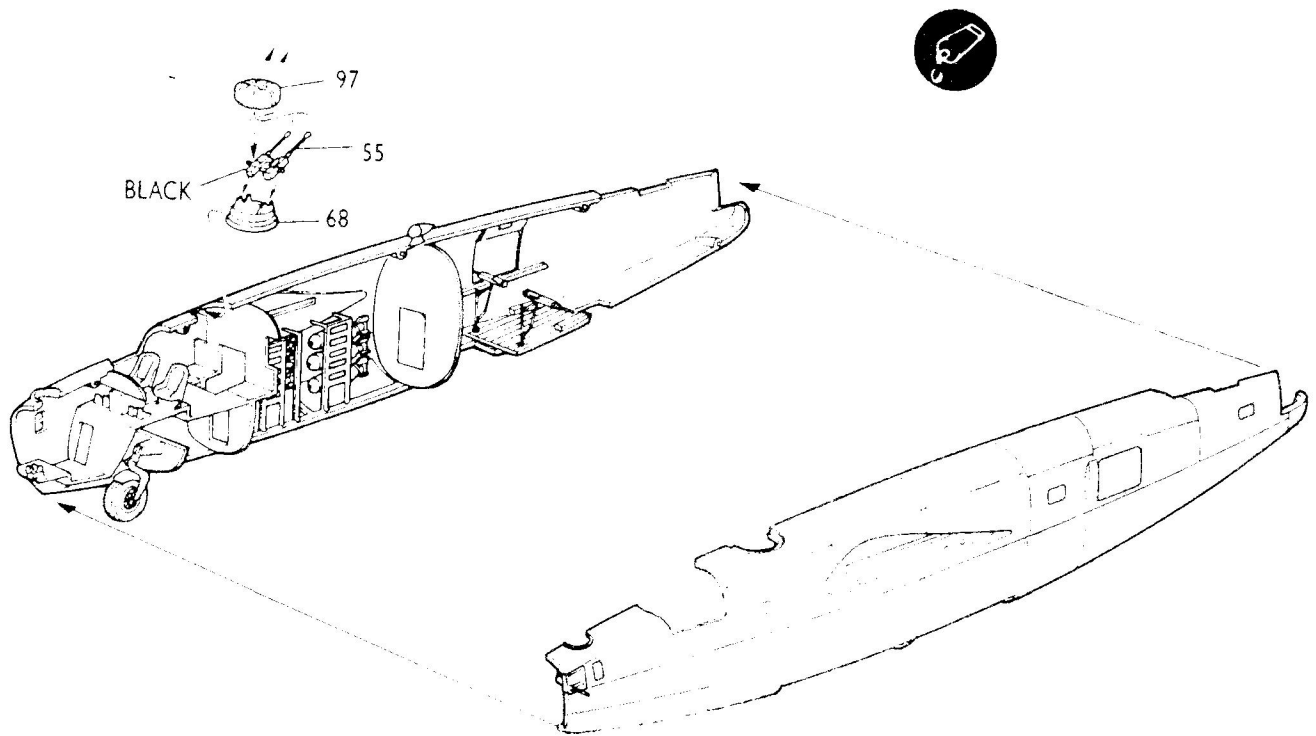
5 TAIL TURRET



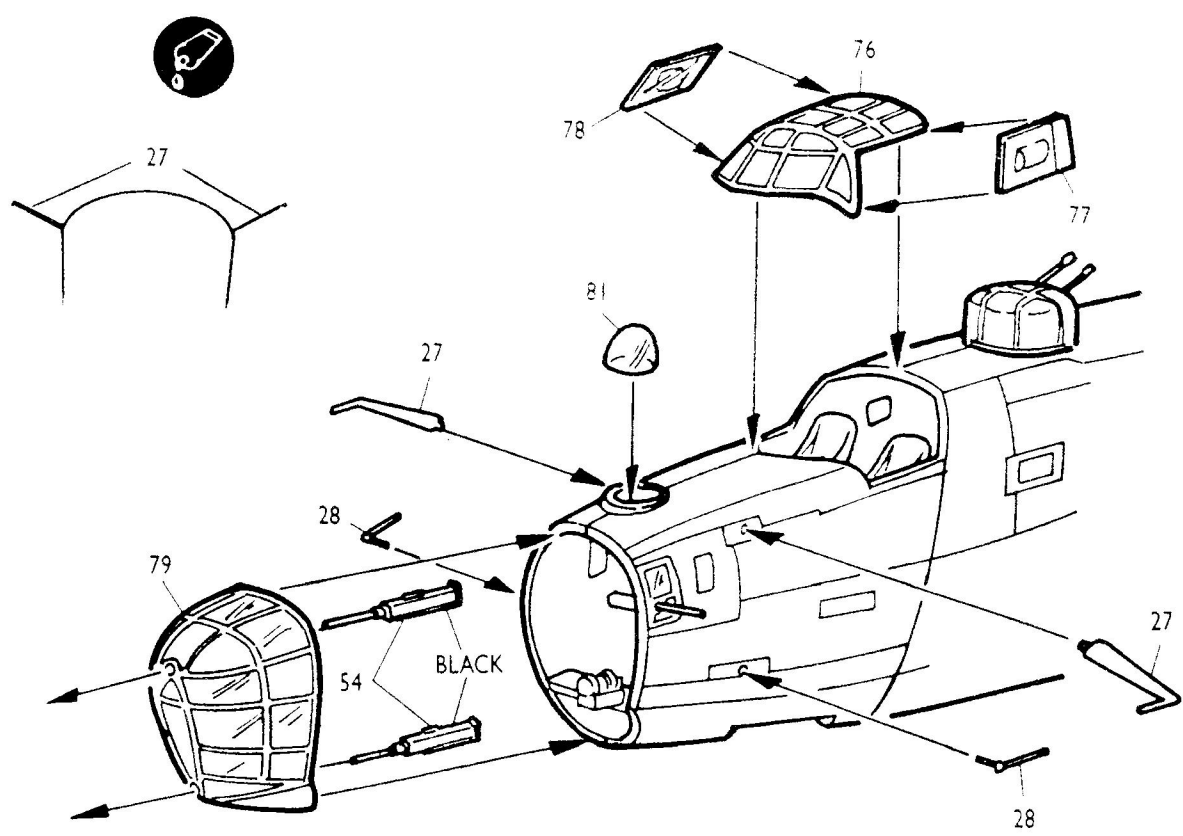
6 COCKPIT INSTALLATION



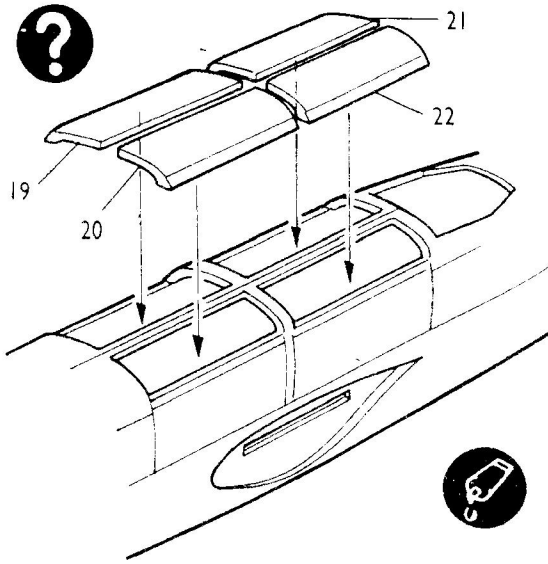
7 MAIN FUSELAGE ASSEMBLY



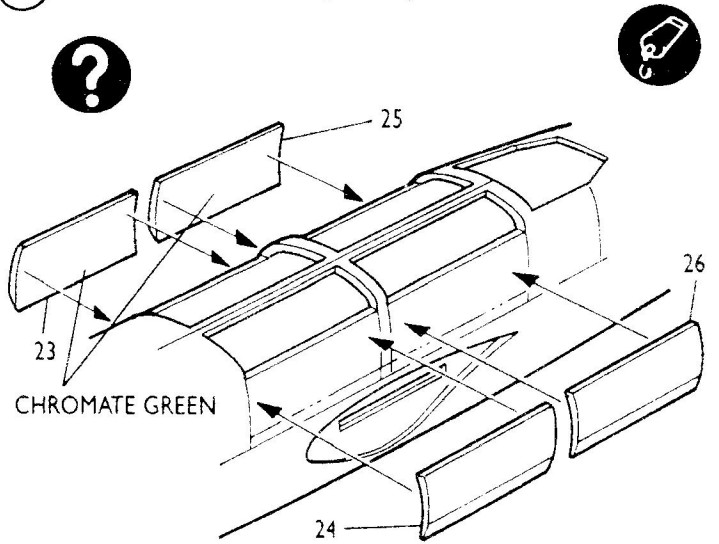
8 FORWARD FUSELAGE ASSEMBLY



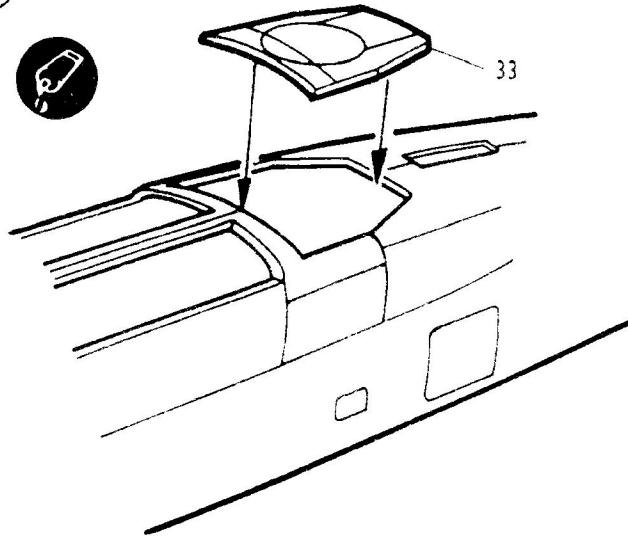
9 BOMB BAY DOORS (CLOSED)



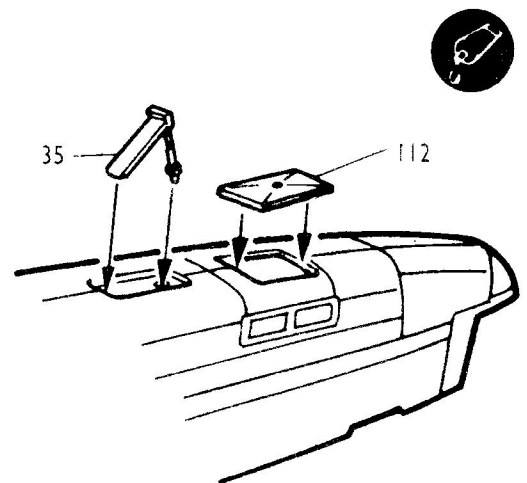
10 BOMB BAY DOORS (OPEN)



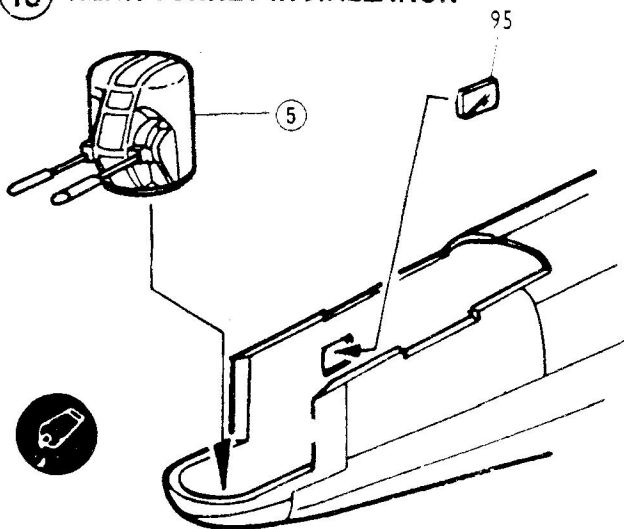
11 LOWER PANEL



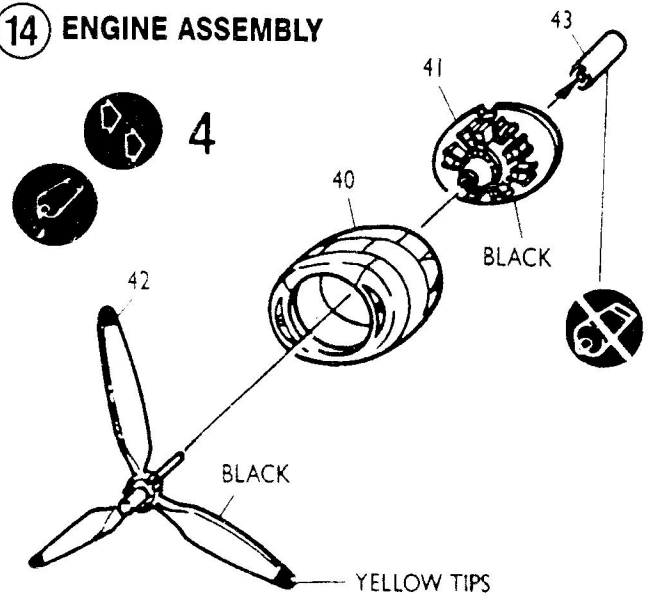
12 LOWER REAR FUSELAGE



13 REAR TURRET INSTALLATION

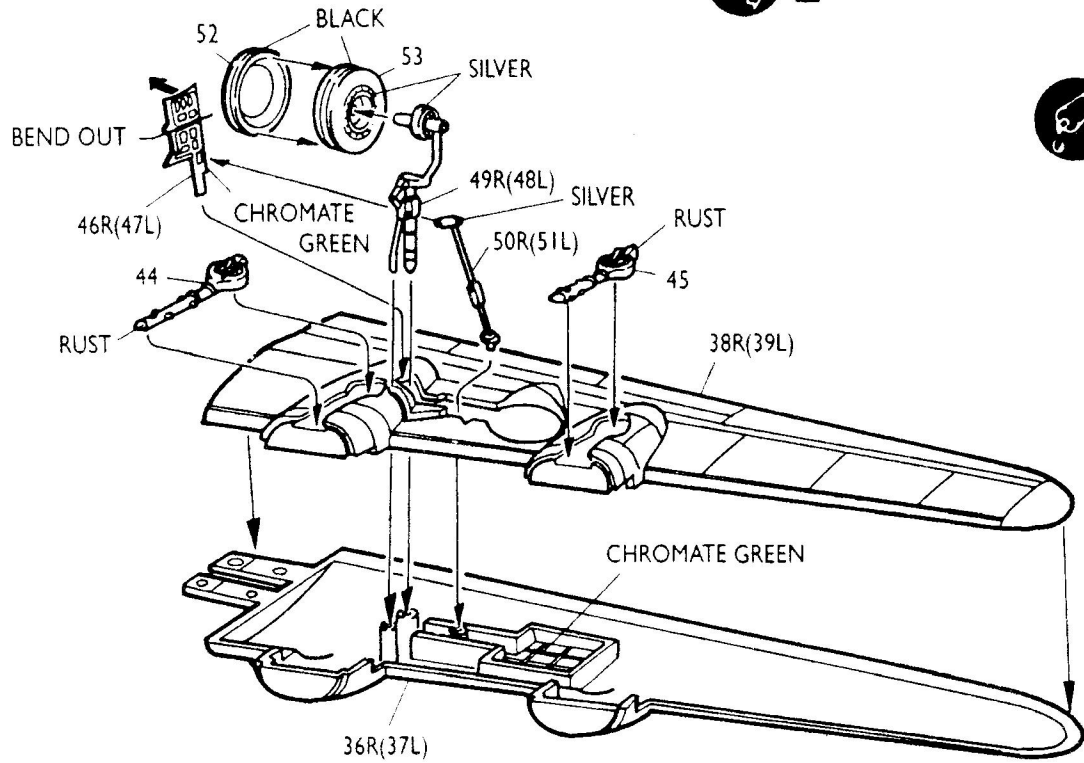


14 ENGINE ASSEMBLY

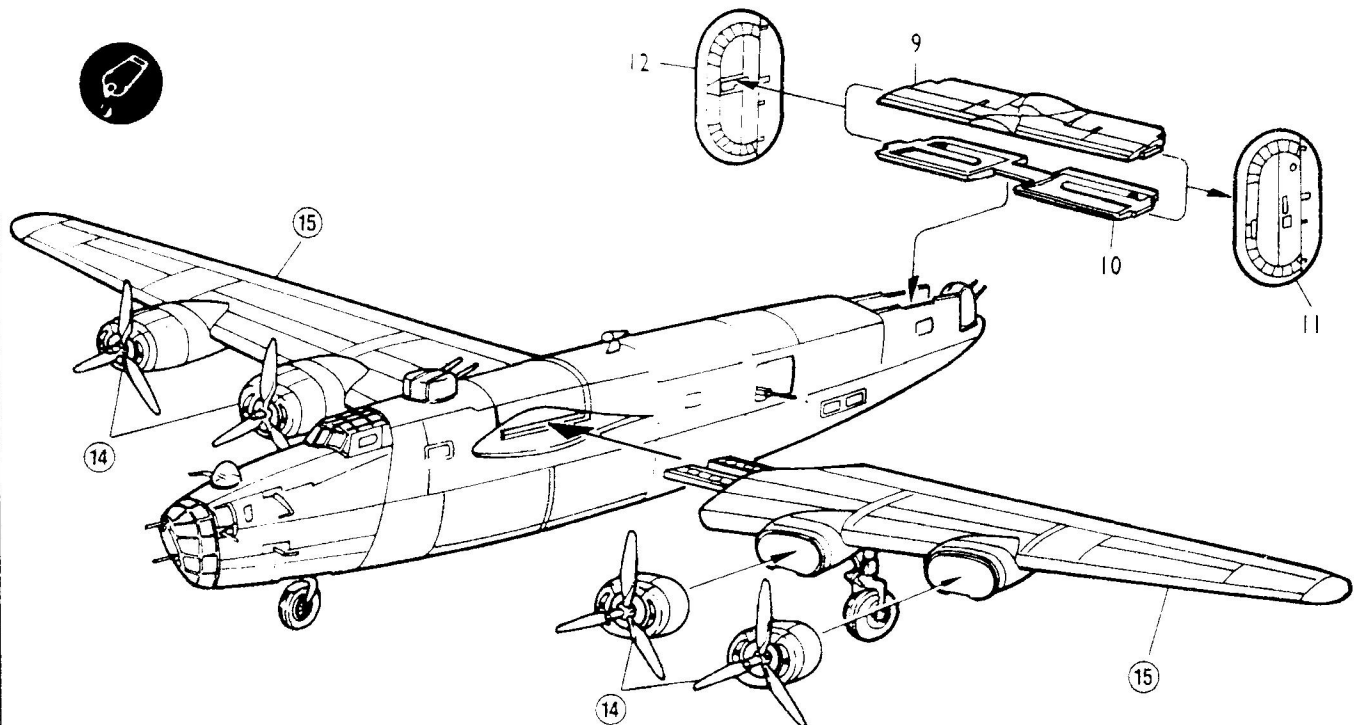


15 WING ASSEMBLY

2 (Repeat for Left side)



16 TAIL AND FINAL ASSEMBLY

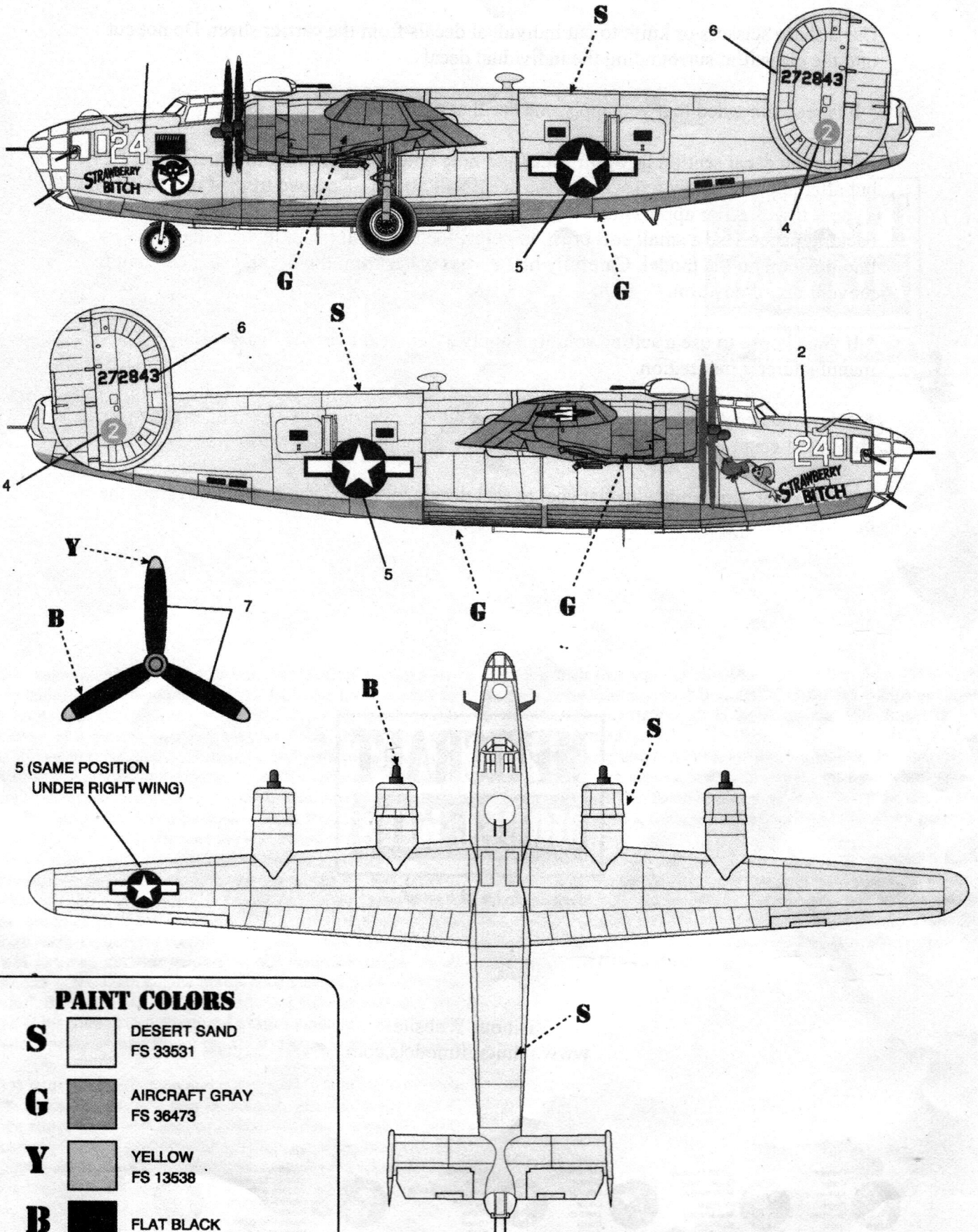


11639

CONSOLIDATED B-24D LIBERATOR

**MINICRAFT
MODELS**

Legends in the making



PAINT COLORS

- S** DESERT SAND
FS 33531
- G** AIRCRAFT GRAY
FS 36473
- Y** YELLOW
FS 13538
- B** FLAT BLACK

Your Minicraft model includes high-quality waterside decals. These decals adhere best to a glossy surface; and it is recommended that you apply a clear gloss coat over your painted model.

Use a sharp scissors or knife to cut individual decals from the carrier sheet. Do not cut into the clear film surrounding the individual decals.

* It is recommended that you apply one decal at a time.

* Place the decal section in warm water and note when first inserted in water it will curl but after approximately ten seconds the decal will uncurl. Remove from water and lay on a paper towel. After approximately 10 - 20 seconds the decal will slide freely from the backing paper. Use a small soft brush to help slide the decal from the backing paper and into position on the model. Carefully blot excess water from the decal, using care not to move it out of position.

* If you choose to use a setting solution, apply a thin coat over the decal following the manufacturer's instruction.

* Allow the decal to dry overnight. Wash any adhesive residue off the model with a small amount of clean water and dry thoroughly. Patting gently usually works best.

* Apply clear gloss, matte or flat coat to seal decals following the instructions from the manufacturer.



Legends in the making™

Visit our Website-
www.minicraftmodels.com



Cement
Coller
Kleben
Pegar
Incollare
Colar
Kleben



DO NOT Cement
No pas Coller
Nicht Kleben
No Pegar
Non Incollare
Nao Colar
Niet Kleven



Cut away
Couper
Scheiden
Cortar
Tagliere
Cortar
Snijden



Optional parts
Choix
Auswahlmöglichkeit
Eleccion
Scelta
Opcao
Keuze



Repeat operation
Repetier E operation
Vorgang wiederholen
Repetir la operation
Ripetere
Repetir a operacao
Herhalen

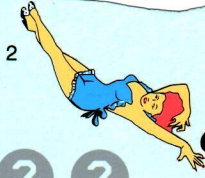


Symmetrical assembly

B-24D STRAWBERRY BITCH
#11639

MINICRAFT
MODEL KITS

Legends in the making



24
STRAWBERRY
BITCH

24
STRAWBERRY
BITCH



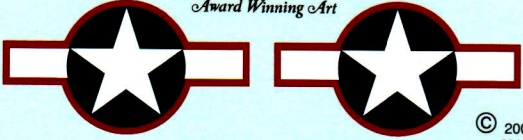
4 2 2

*Invisi-
clear*



6
272843
272843

SCALE-MASTER®
DECALS
Award Winning Art



7
● ● ● ●
● ● ● ●
● ● ● ●

PRINTED BY CARTOGRAF MADE IN ITALY

© 2005 MINICRAFT MODELS INC.
ALL RIGHTS RESERVED