

CONSOLIDATED / CONVAIR B-24J LIBERATOR

ACADEMY
MINICRAFT
MODEL KITS

In 1938, Consolidated Aircraft Company had been experimenting with a narrow, high-lift wing and was testing it on a twin-engined civil flying boat project, known as the Model 31. Although the B-17 Flying Fortress had just gone into production the USAAF asked Convair to design another heavy bomber with performance exceeding that of the new B-17 Flying Fortress.

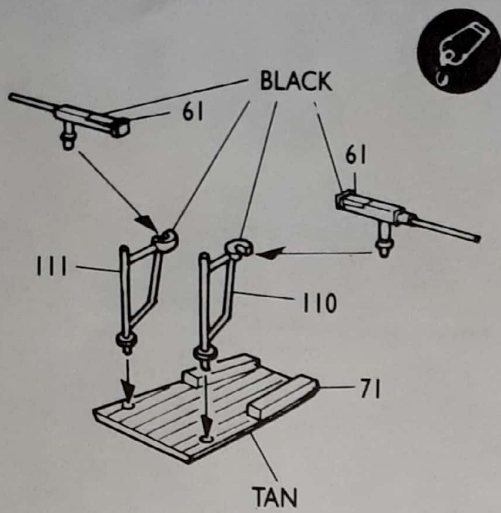
The Convair bomber was designed using the wing and tail arrangement of the Model 31. Designated XB-24, the new bomber looked so promising on paper that the Air Corps ordered seven YB-24's and another 31 planes were on the books before the XB-24 had even flown. Eventually, the B-24 was named Liberator and went on to become the most widely produced American bomber in World War II. One of the reasons for the large quantity of B-24's to roll from the assembly lines lay in the fact that they were being built by Douglas, Ford and North American.

Although the B-24 was clumsy-looking alongside the slim B-17 Fortress, the ponderous shape of the Liberator was the secret of its great bomb load. It was also slightly faster and had a greater range than the Fortress.

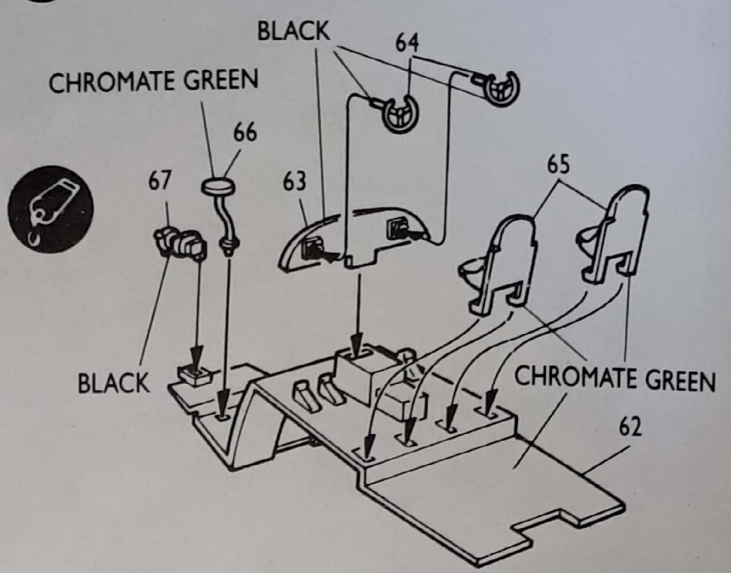
The B-24J version of the Liberator was produced in the largest quantity; a total of 6,678 copies being produced. Other versions of the Liberator were the C-87 Liberator Express, a transport version of the bomber, and some became C-109 fuel tankers.

The markings on this Minicraft B-24J depict a plane from the 90th Bomb Group, called the Jolly Rogers, which operated in the southwest Pacific during the war.

1 GUN ASSEMBLY

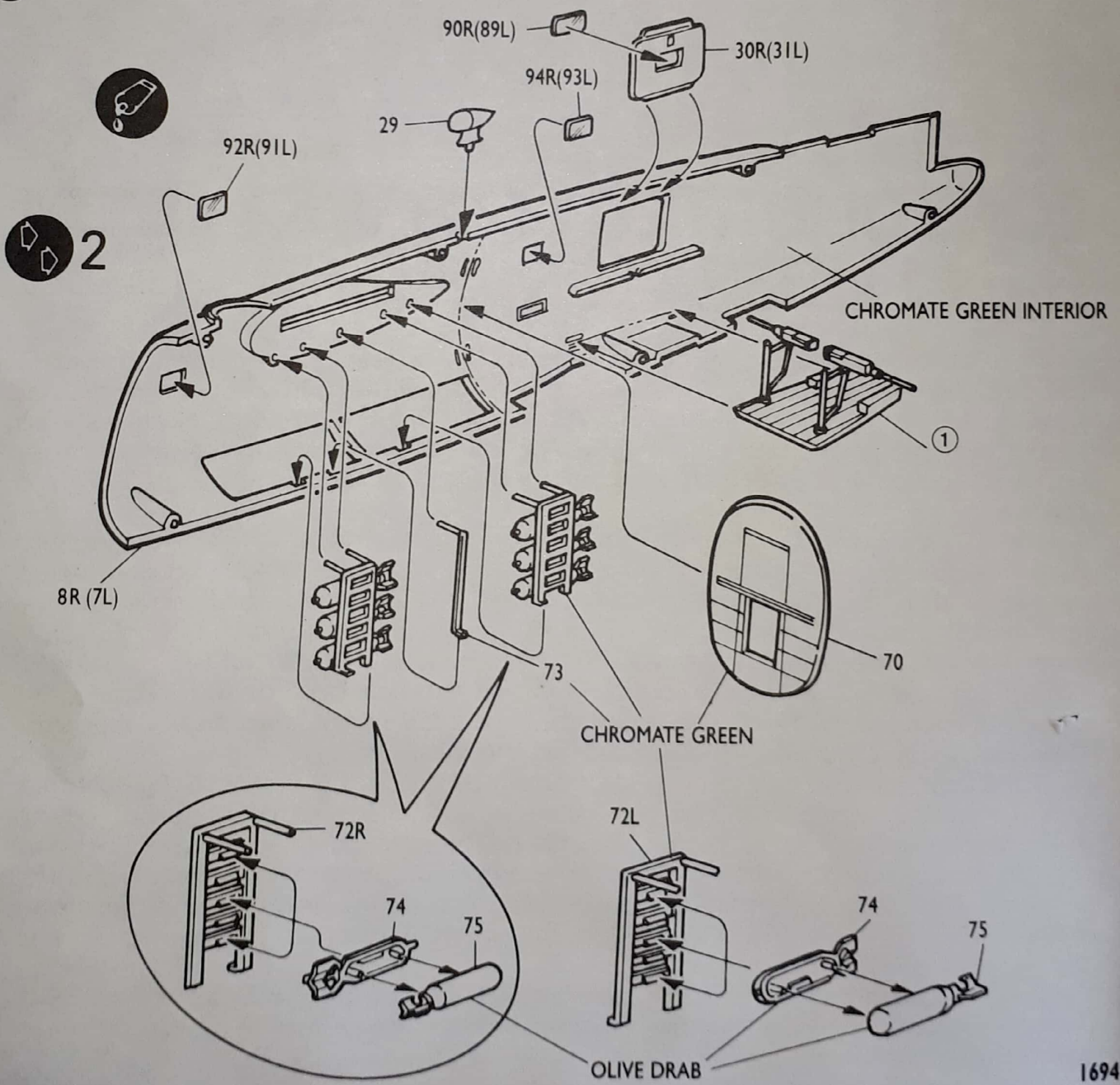


2 COCKPIT

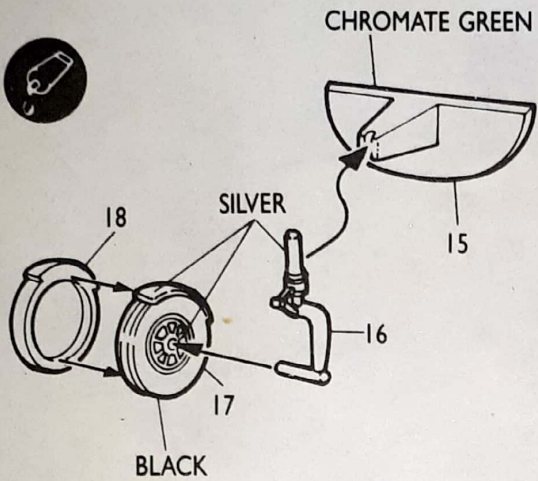


3 FUSELAGE INTERIOR

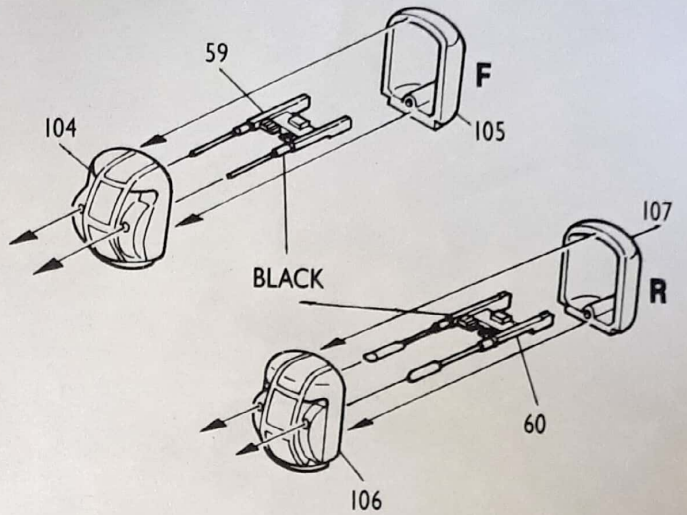
(Repeat for Left side)



4 NOSE WHEEL

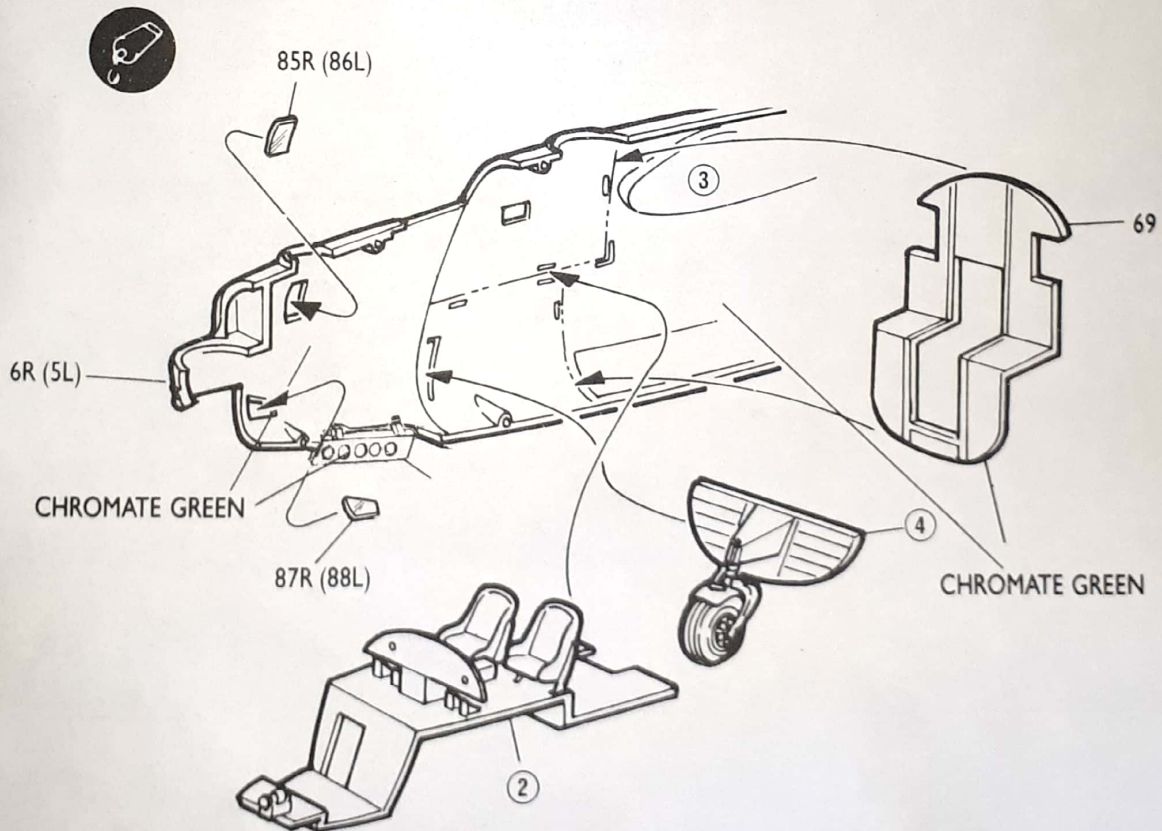


5 NOSE AND TAIL TURRETS

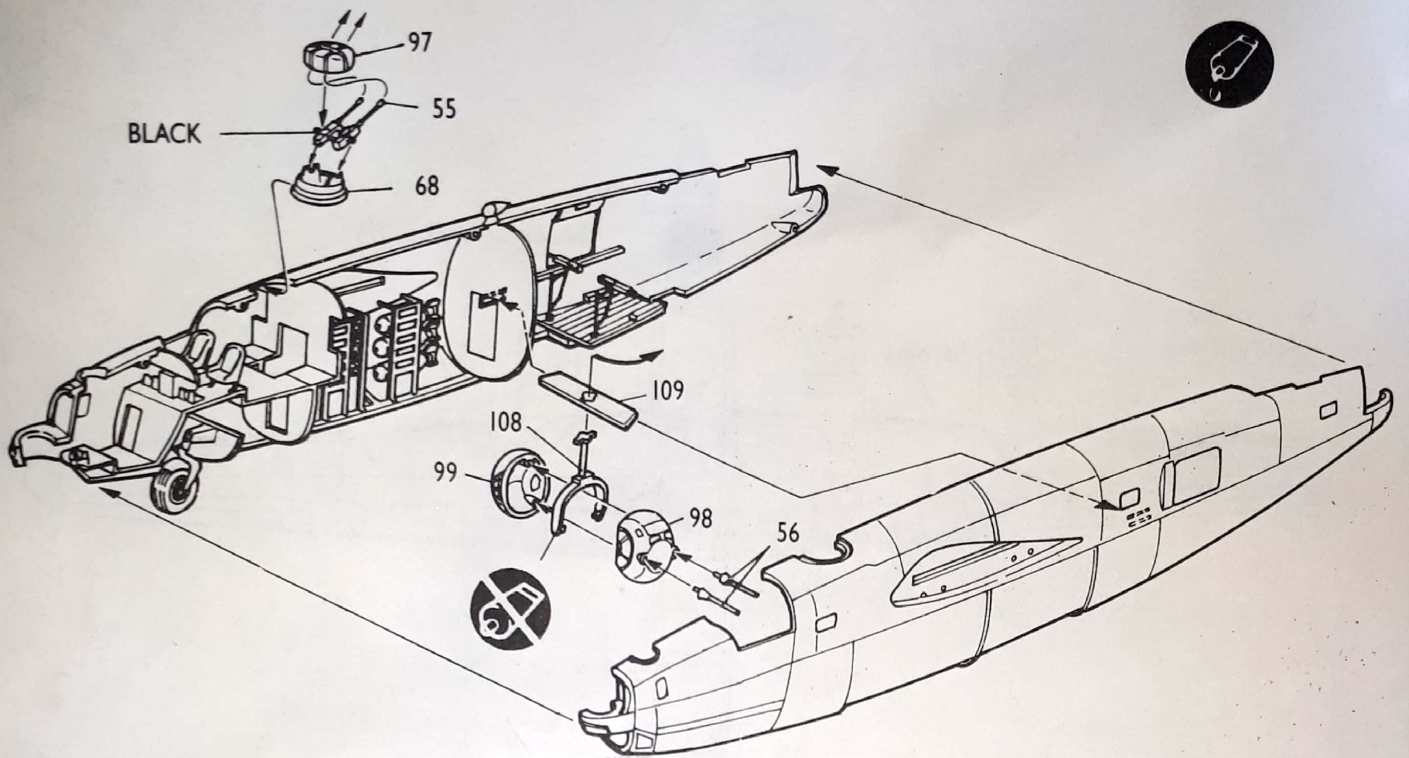


6 COCKPIT INSTALLATION

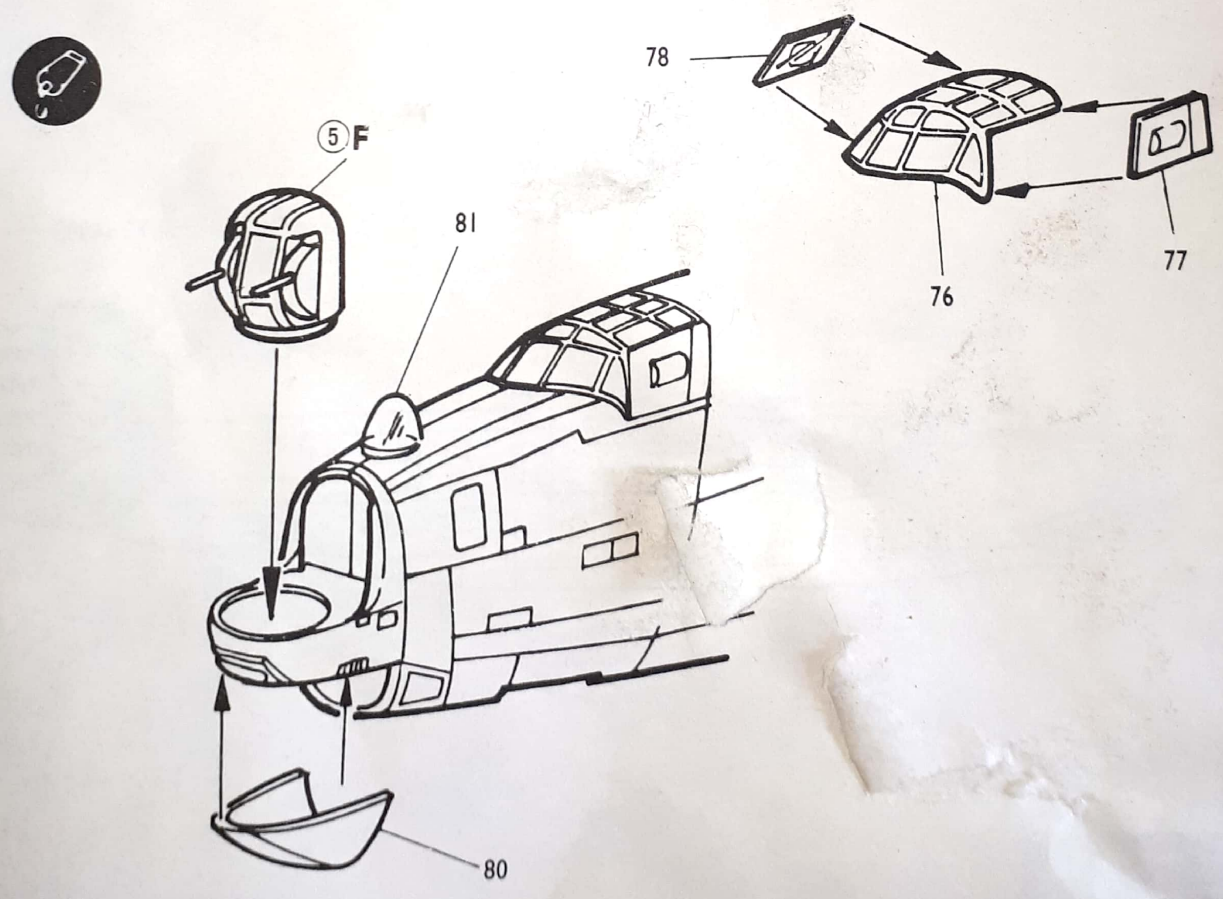
(Repeat for Left side)



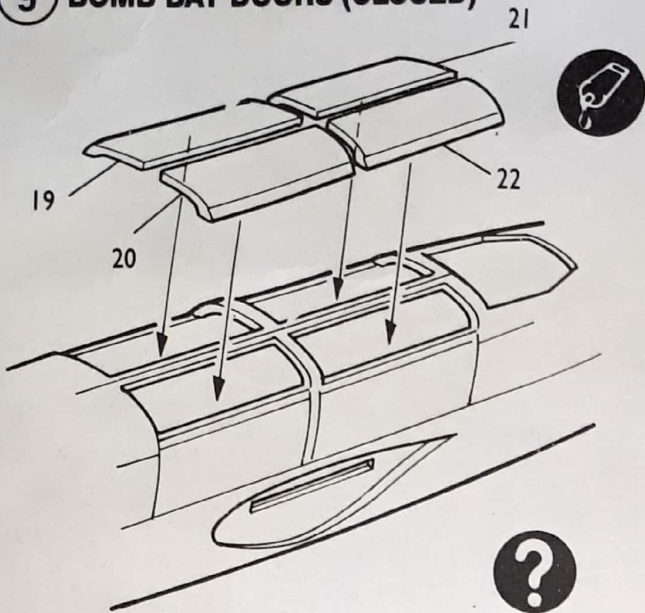
7 MAIN FUSELAGE ASSEMBLY



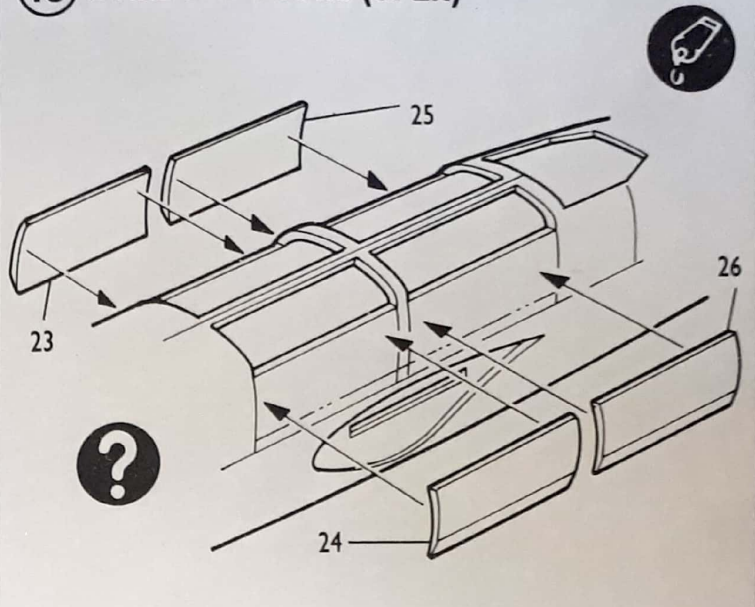
8 FORWARD FUSELAGE ASSEMBLY



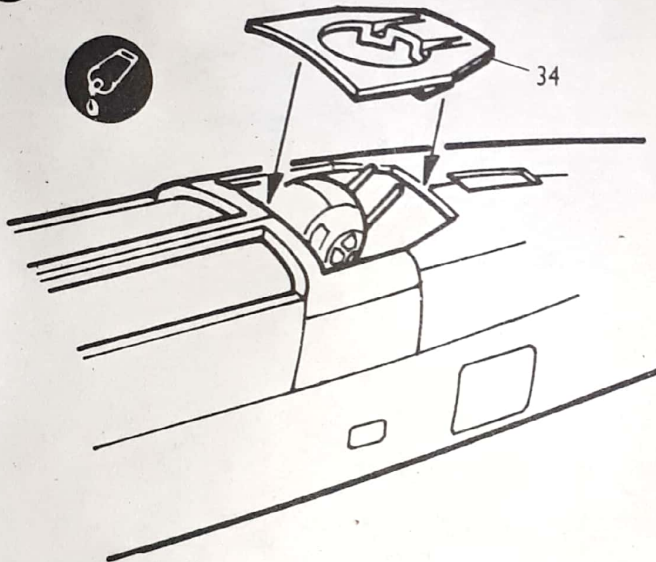
9 BOMB BAY DOORS (CLOSED)



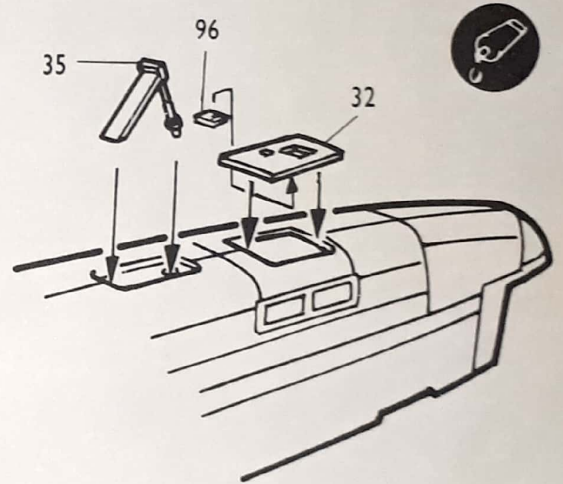
10 BOMB BAY DOORS (OPEN)



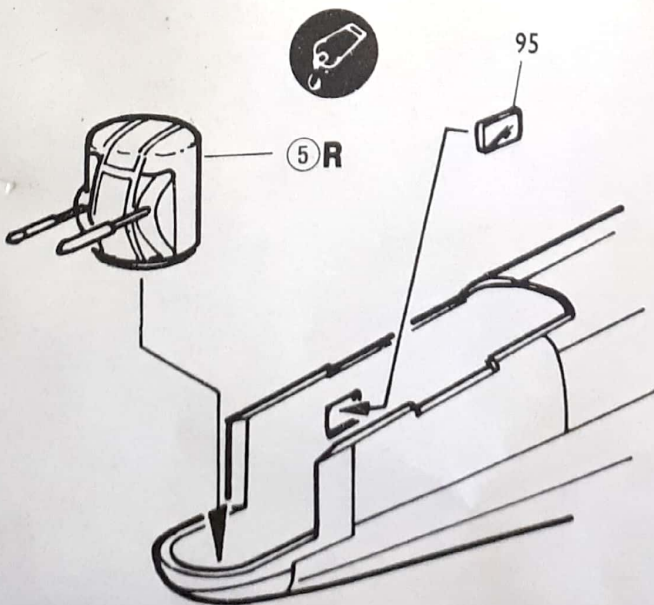
11 LOWER PANEL



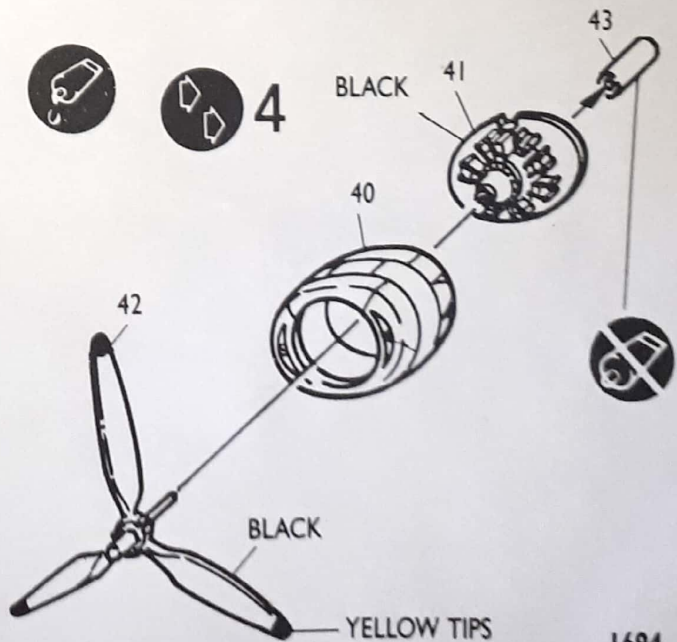
12 LOWER REAR FUSELAGE



13 REAR TURRET INSTALLATION



14 ENGINE ASSEMBLY

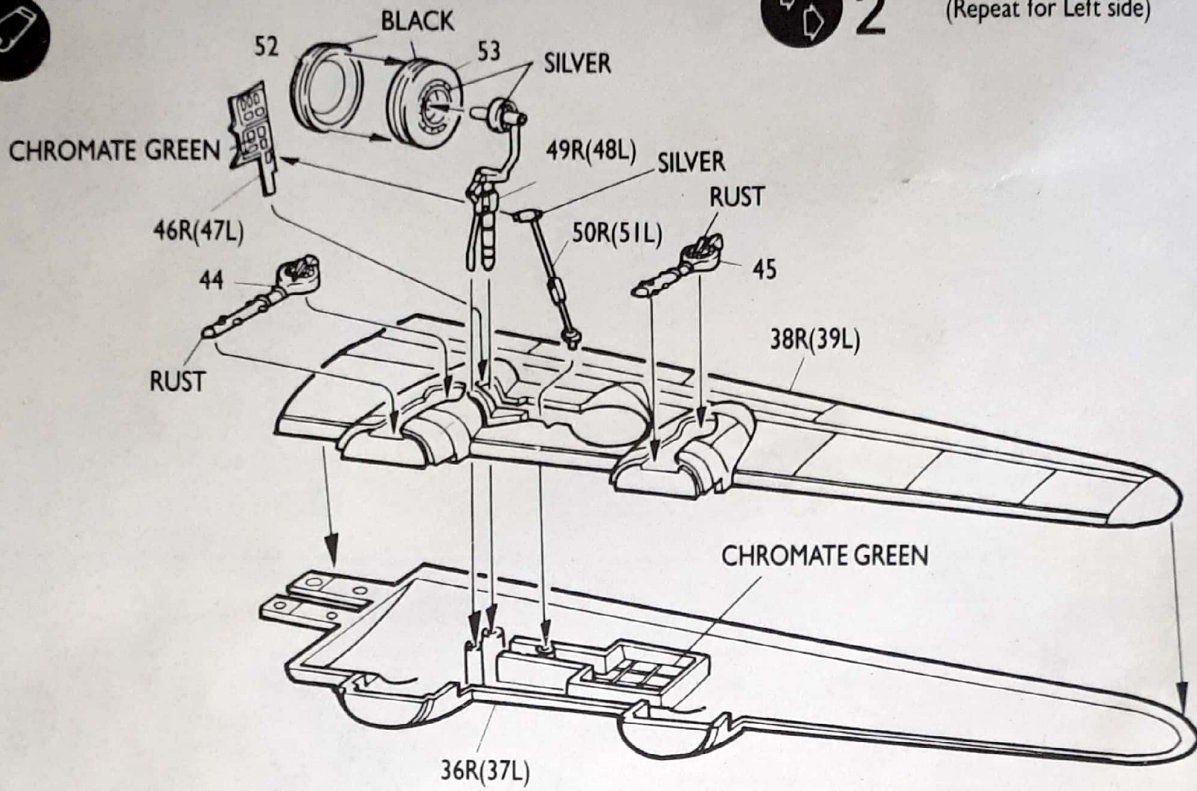


15 WING ASSEMBLY

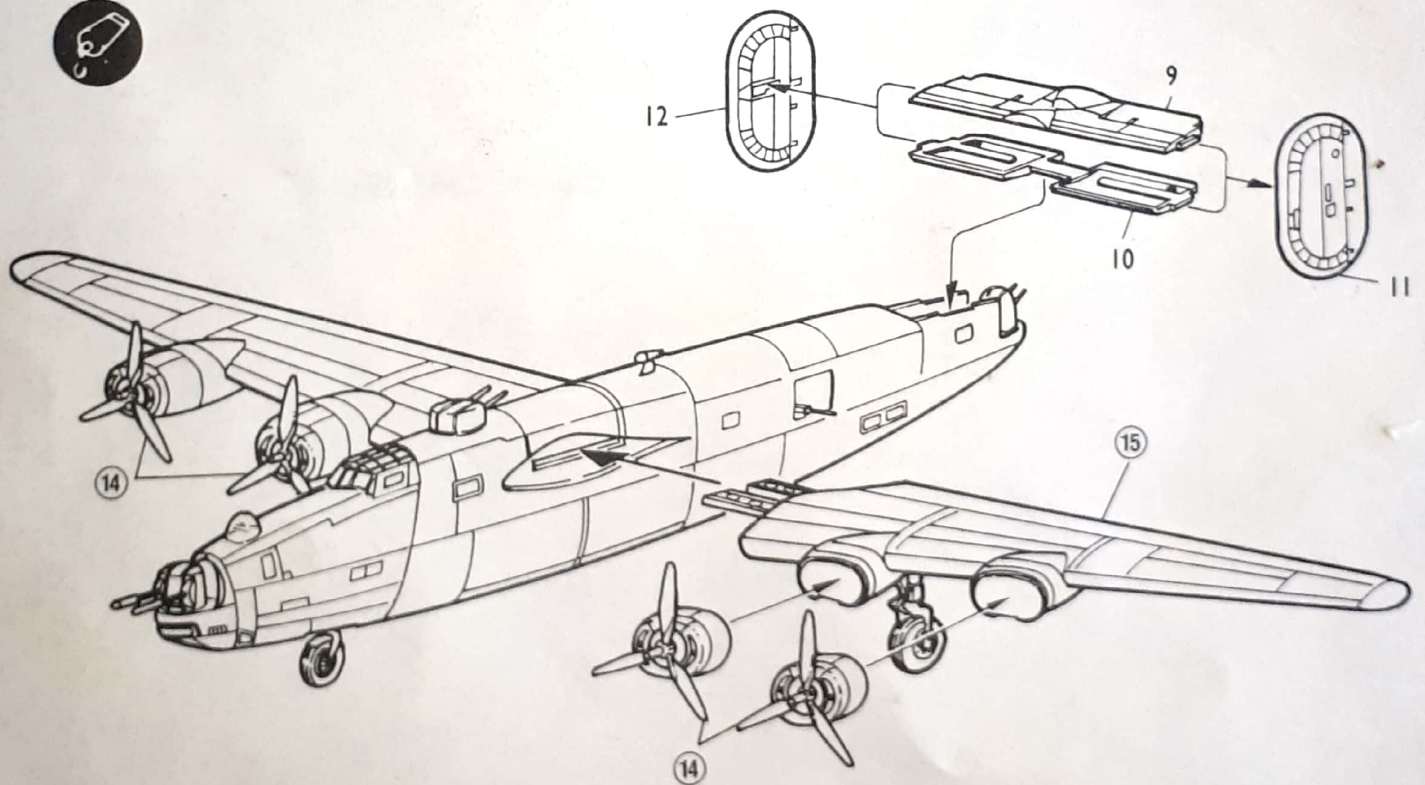


2

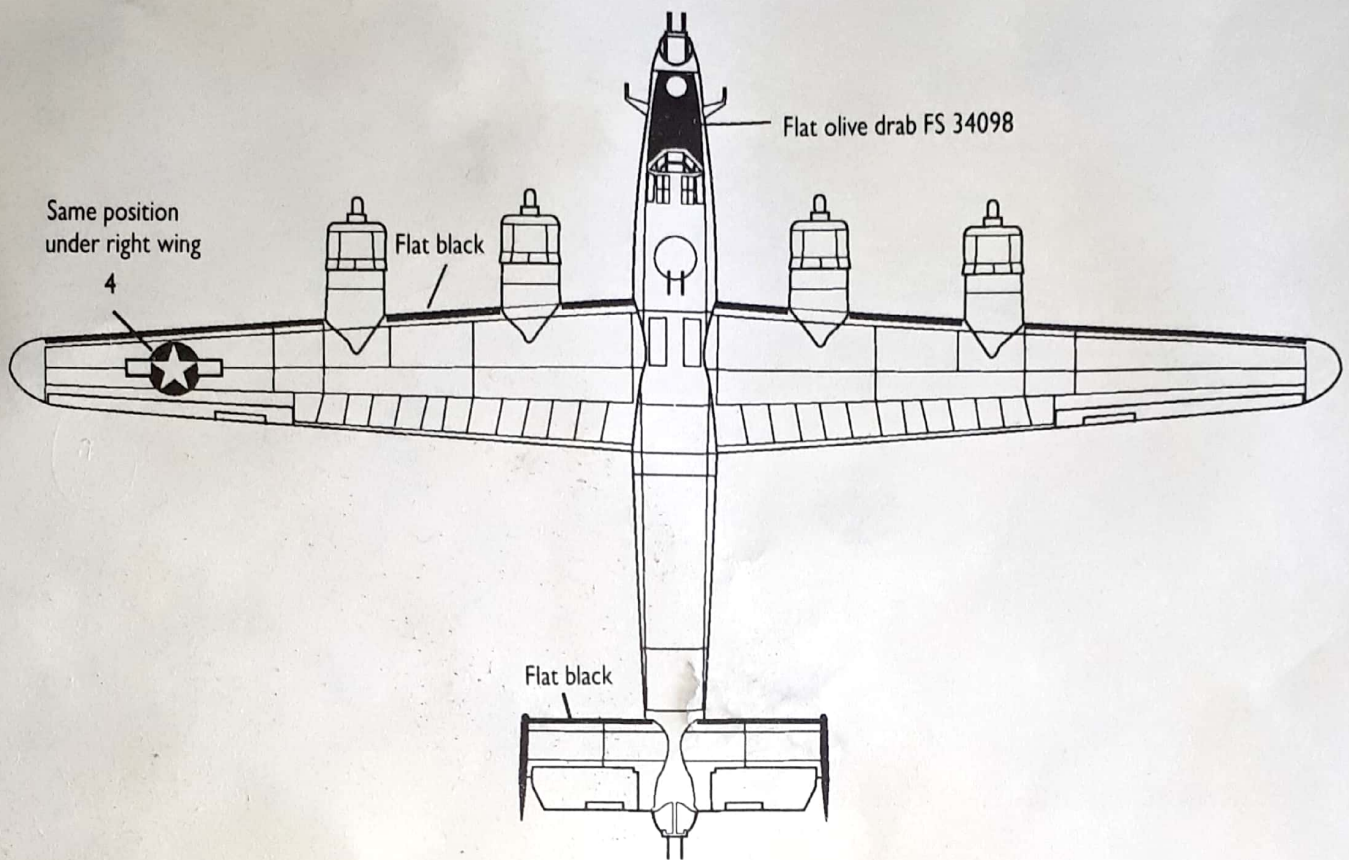
(Repeat for Left side)



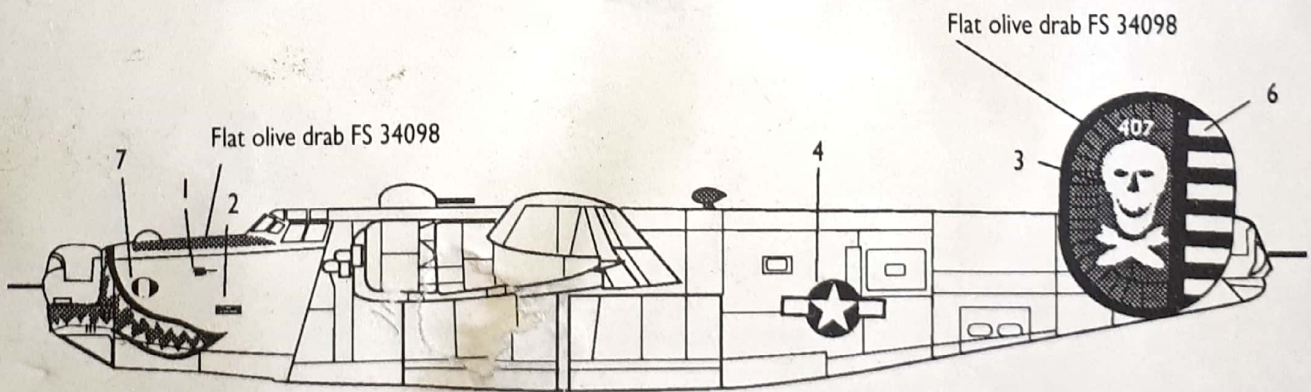
16 TAIL AND FINAL ASSEMBLY



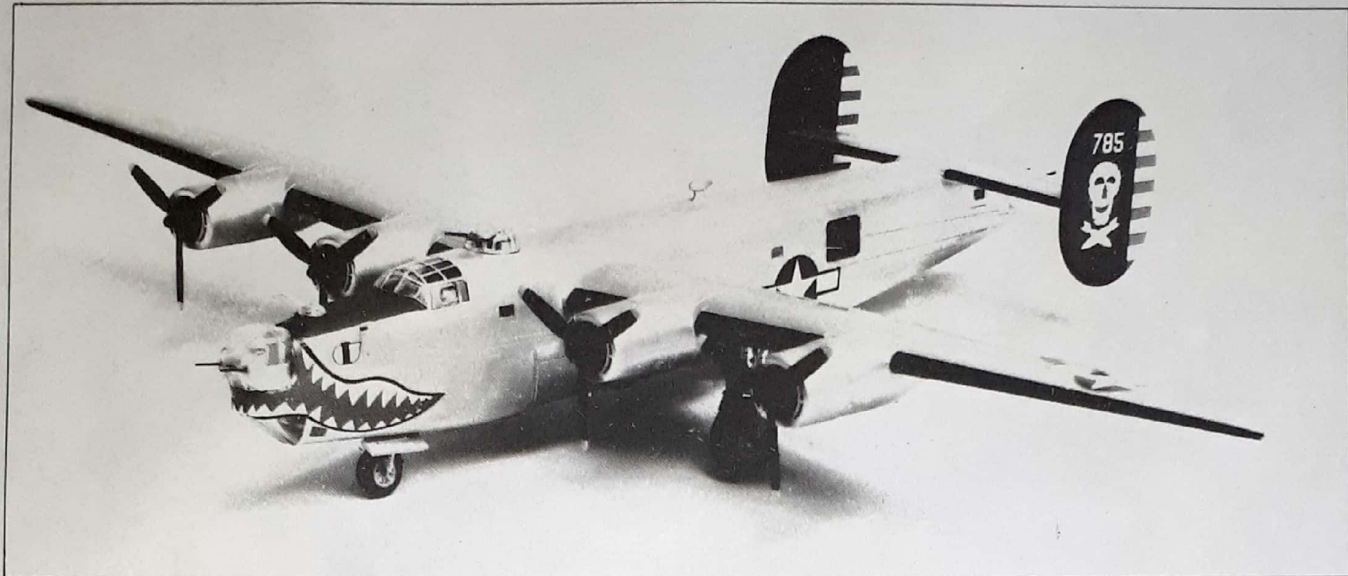
PAINING AND DECAL PLACEMENT DIAGRAMS



Overall natural metal



B-24J



ACADEMY
MINICRAFT
MODEL KITS

| ENGLISH | FRENCH | GERMAN | SPANISH | ITALIAN |
|----------|----------|-----------------|-----------|-----------|
| WHITE | BLANCO | WEISS | BLANC | BIANCO |
| YELLOW | JAUNE | GELB | AMARILLO | GIALLO |
| RED | ROUGE | ROT | ROJO | ROSSO |
| BLUE | BLEU | BLAU | AZUL | BLU |
| GRAY | GRIS | GRAU | GRIS | GRIGIO |
| GUNMETAL | METALLIC | METALLIC | METALICO | METALLICO |
| GREEN | VERT | GRUN | VERDE | VERDE |
| SILVER | ARGENT | SILBERN | PLATA | ARGENTO |
| BLACK | NOIR | SCHWARZ | NEGRO | NERO |
| ORANGE | ORANGE | ORANGE | NARANJADO | ARANCIO |
| AMBER | AMBRE | BERNSTEINFARBEN | AMBAR | AMBRA |
| ALUMINUM | ALUMINUM | ALUMINUMFARBEN | ALUMINIO | ALLUMINIO |
| GLOSS | LUSTRE | GLANZENDES | BRILLANTE | BRILLANTE |
| FLAT | TERNE | GLANZLOSES | APAGADO | OPACO |



Cement Parts
Coller
Kleben
Pegar
Incollare
Colar
Kleven



DO NOT cement
Ne pas coller
Nicht kleben
No pegar
Non incollare
Nao colar
Niet kleven



Cut away
Couper
Scheiden
Cortar
Tagliare
Cortar
Snijden



Optional parts
Choix
Auswahlmoglichkeit
Eleccion
Scelta
Opcao
Keuze



3

Repeat operation
Répéter l'opération
Vorgang wiederholen
Repitir la operación
Ripetere
Repitir a operação
Herhalen

MINICRAFT MODELS, INC. P.O. BOX 3577 • TORRANCE, CA 90510

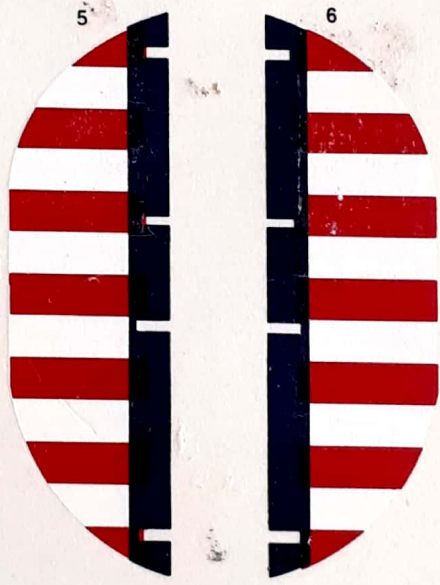
1694

CON. B-24J LIBERATOR #1694

ACADEMY
MINICRAFT
MODEL KITS

1
US ARMY IN THE
AIR CORPS SERIAL NO. 407

2
FIRE
EXTINGUISHER



SCALE-MASTER[®]
DECALS