

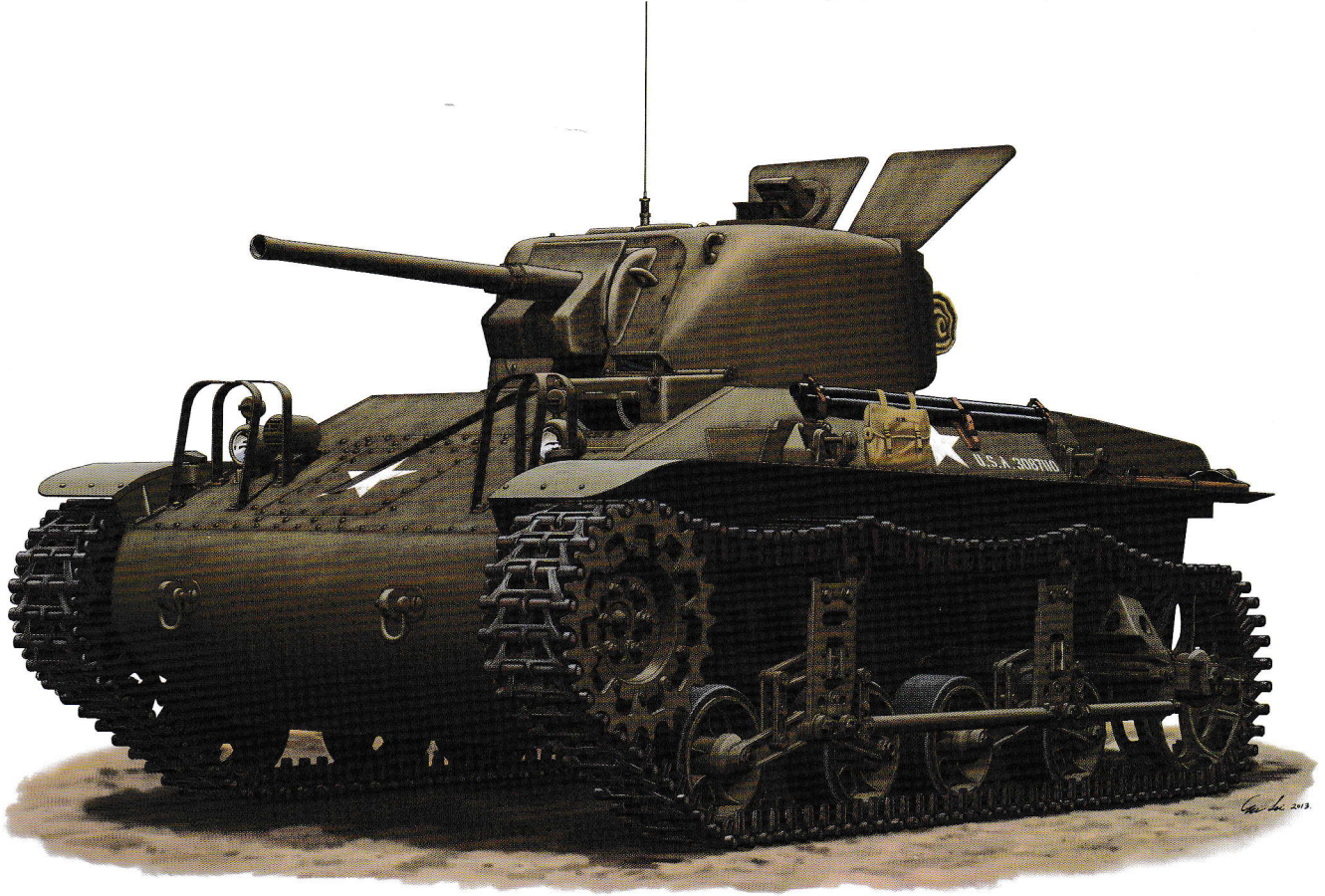



Bronco Models

Kit No. CB-35162


US M22 Locust Airborne Tank (T9E1) 1/35 SCALE

美军M22 ‘蝗虫’伞兵型轻坦克 (T9E1)




The M22 Airborne Tank was designed and built to a British requirement issued in late 1942. However the US Army also became interested in the tank for their own Airborne forces. The T9 light tank was plagued with mechanical problems which were not entirely solved when the tank entered production in late 1943. Tanks delivered to the US Army were used to equip experimental airborne units, the 151st Airborne Tank Company and 28th Airborne Tank Battalion. They were carried by the C-54 transport aircraft, the turret being carried in the cargo compartment and the hull strapped under the fuselage. This was not ideal, as airfields had to be captured before the M22's could be landed. A small number of M22 tanks were sent to France with the 6th Army Group, but were not used in action. Armed with only a 37 mm gun, the M22 was considered obsolete before it entered service. It was fast at 65 km/h, but suffered transmission problems. Most M22's were scrapped after the war, but some survived, Egypt received a large number in 1946, Belgium and Israel also operated the type. 

Short Story by Phil Greenwood

Der M22 Luftlandepanzer wurde auf Anraten der Briten 1942 entwickelt. Aber auch die US Army interessierte sich für die Idee. Der T9 Prototyp litt unter mechanischen Problemen, welche auch während der Serienherstellung Ende 1943 nie ganz gelöst wurden. In Amerika testete man das Fahrzeug bei der 151. Luftlande Panzer Kompanie und dem 28. Luftlande Panzer Bataillon. Der Turm wurde im Frachtraum einer C-54 transportiert, der Rest des Panzers wurde unter dem Rumpf befestigt. Zum Absetzen des M22 hätten aber erst die entsprechenden Flugplätze eingenommen werden müssen. Daher erklärte man diese Entwicklung schon vor dem ersten Einsatz als veraltet. Eine kleine Stückzahl ging nach Frankreich zur 6. Heeresgruppe, wurde aber nicht eingesetzt. Als Bewaffnung diente dem M22 ein 37mm Geschütz. Die Höchstgeschwindigkeit betrug 65 km/h. Die meisten wurden nach dem Krieg verschrottet. Ägypten erhielt 1946 eine größere Menge, Belgien und Israel stellten auch einige M22 in Dienst. 

© Translation Michael Knoblich Academy Europe

1942年底美国陆军因应一项英国方面的要求而开发可用航空机运载的 M22 小型坦克。然而美国本身也极需要这类型的战斗车辆能供自己空降部队使用。当 1943 年底正式投入生产前，样办的 T9 轻型坦克一直备受各种机械问题所困扰。第一个被供应 M-22 坦克作实验单位的是美国陆军第 151 坦克空降旅及第 28 坦克空降营。这些坦克经由 C 54 运输机运送，运载的方式非常特别，是将整辆坦克捆绑在机腹的下部，而炮塔却藏于机体内。但有趣的是要实践这种投送构思方式必须先派兵将敌人的机场占领才可以投放这些 M22 坦克。当时有少量的 M22 坦克被送往法国战场供美第六集团军使用，但却从未在任何真正行动中使用过。M22 装备有 37 毫米火炮，但当其投入服务时却已被认为感觉过时了。它的时速可达每小时 65 公里，由于一直遭受传动的问题困扰。大多数的 M22 战后遭报废，一些幸存下来的主要在 1946 年提供了给埃及，而小部份则给了比利时和以色列使用。 

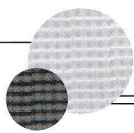


ILLUSTRATION 图示说明:

CORRECT METHOD FOR APPLYING DECALS : HINWEISE ZUM ANBRINGEN DER DECALS 正确贴水贴纸的方法:

1. Clean model parts surface with wet cloth. Entsprechende Stellen am Modell feucht reinigen.
将需要贴水贴之部位表面擦干净。
2. Cut out the decal parts and dip them in cold water for 15 ~20 seconds. Decal ausschneiden und für 15-20 Sek. ins Wasser legen.
将所需之贴纸剪下泡在清水里约15至20秒。
3. Place it on correct position of the model kit. Decal an der richtigen Stelle auflegen.
将湿透之贴纸取出置放于正确之位置旁。
4. Slide off the decal from the base paper on to the model kit surface with a cotton stick. Decal mit Wattestäbchen festhalten und Papier darunter wegziehen.
用棉花棒轻推贴纸表面使其从底纸滑出至模型表面之正确位置。
5. When decal get dry then complete. Decal mit Papiertuch andrücken und trocknen.
待其自然干透后即完成。

ICON INSTRUCTION: 图标说明:



Open Hole
Loch bohren
钻孔



Remove
Abtrennen
切除



2 Sets needed
Vorgang wiederholen
同样的制作二组



Bend
Biegen
曲折



Optional
Auswahl
可以选择采用



Apply Decal
Decal anbringen
贴水贴纸



Instant Glue For Metal
Sekundenkleber verwenden
瞬间接着剂,金属用



Fill Hole
Verspachteln
把孔填平



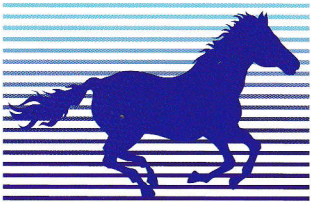
Do not cement
Nicht kleben
不用粘合

COLOR SUGGESTION: FARBTABELLE: 涂装指引:

Color 涂料表	MR. Hobby	Hobby Color	Humbrol	Tamiya
Steel Stahl 黑铁色	H-18	C-28	53	/
Olive Drab Oliv Braun 橄榄褐	H-78	C-38	66	XF-62
Silver Silber 银色	H-8	J-8	11	X-11
Rust Rust 铁锈色	H-334	/	113	/
Tyre black Reifenschwarz 轮胎黑	H-77	C-137	85	/
Clear red Klar-Rot 透明红	/	/	/	XF-65
Semi-gloss black Schwarz Seidenmatt 半光黑色	/	C-82	/	/
Khaki Kaki 卡其色	H-81	C-55	19	X-7
Wood brown Holzbraun 木棕色	H-37	C-43	/	/
Leather Brown 皮革棕色	/	/	62	XF-62
Tan Tan 黄褐色	H-27	C-44	9	XF-55

READ BEFORE ASSEMBLING: VOR ZUSAMMENBAU LESEN: 组装必读:

- Carefully Study instruction before assembling. Anleitung studieren und verständlich machen. 组装前请阅读清楚制作指引。
- Keep plastic model glue and tools away from children. Kleber, Farben, Werkzeuge und Plastiktüten von Kindern fernhalten. 胶水,油漆及工具勿让小孩接触。
- Do not use cement or paint near open flame or sparks. Kleber/Farbe nicht in Nähe von offenen Flammen. 胶水及油漆勿接触火种。
- Do not work in closed room. Nur in ausreichend belüfteten Räumen arbeiten. 勿在密封地方制作模型。



BRONCO

Bronco Models

Copyright © 2013

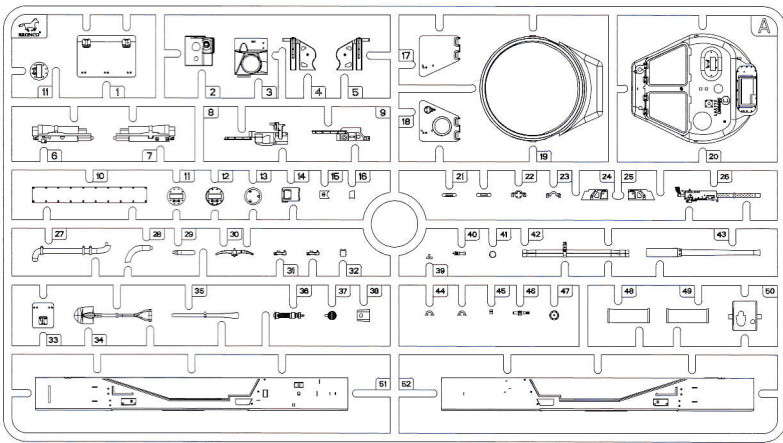
Made in China

中国制造

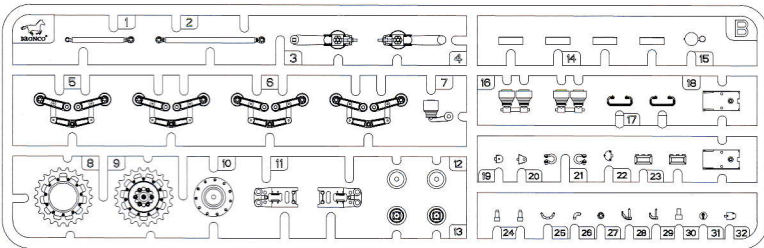


No use parts
不要部件

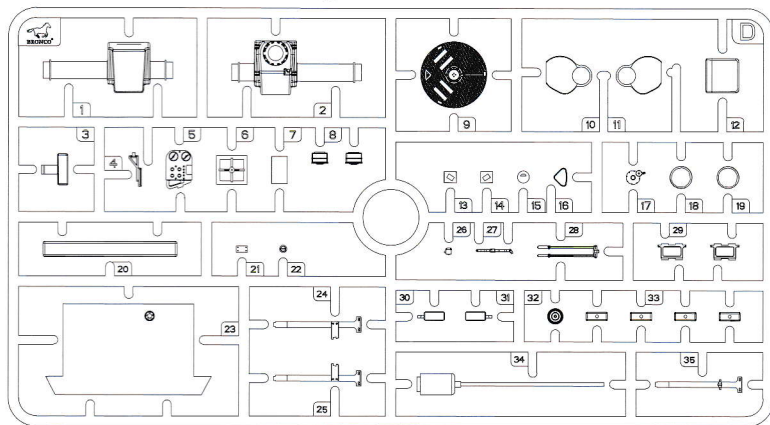
Ⓐ × 1



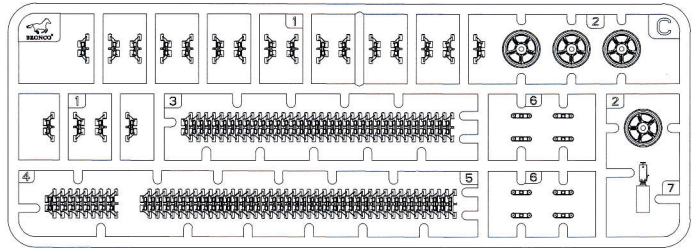
Ⓑ × 2



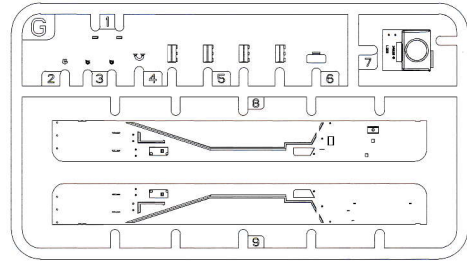
Ⓓ × 1



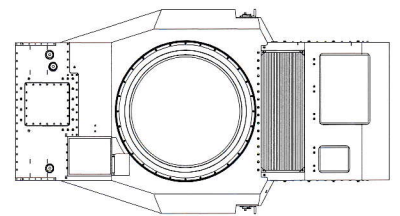
Ⓒ × 2



Ⓖ × 1



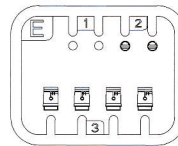
Ⓙ × 1



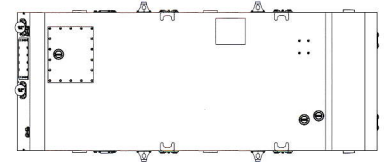
Ⓜ × 2



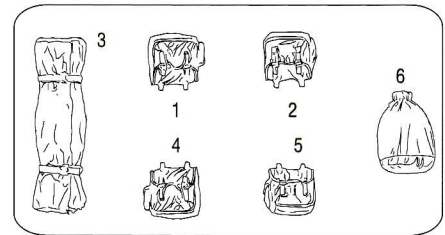
Ⓔ × 1



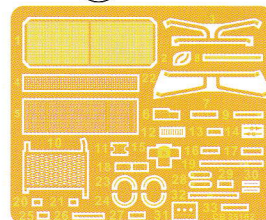
ⓓ × 1



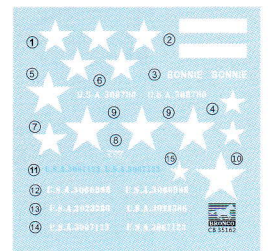
Ⓒa × 1



Ⓟ × 1



DECAL × 1



CB35162

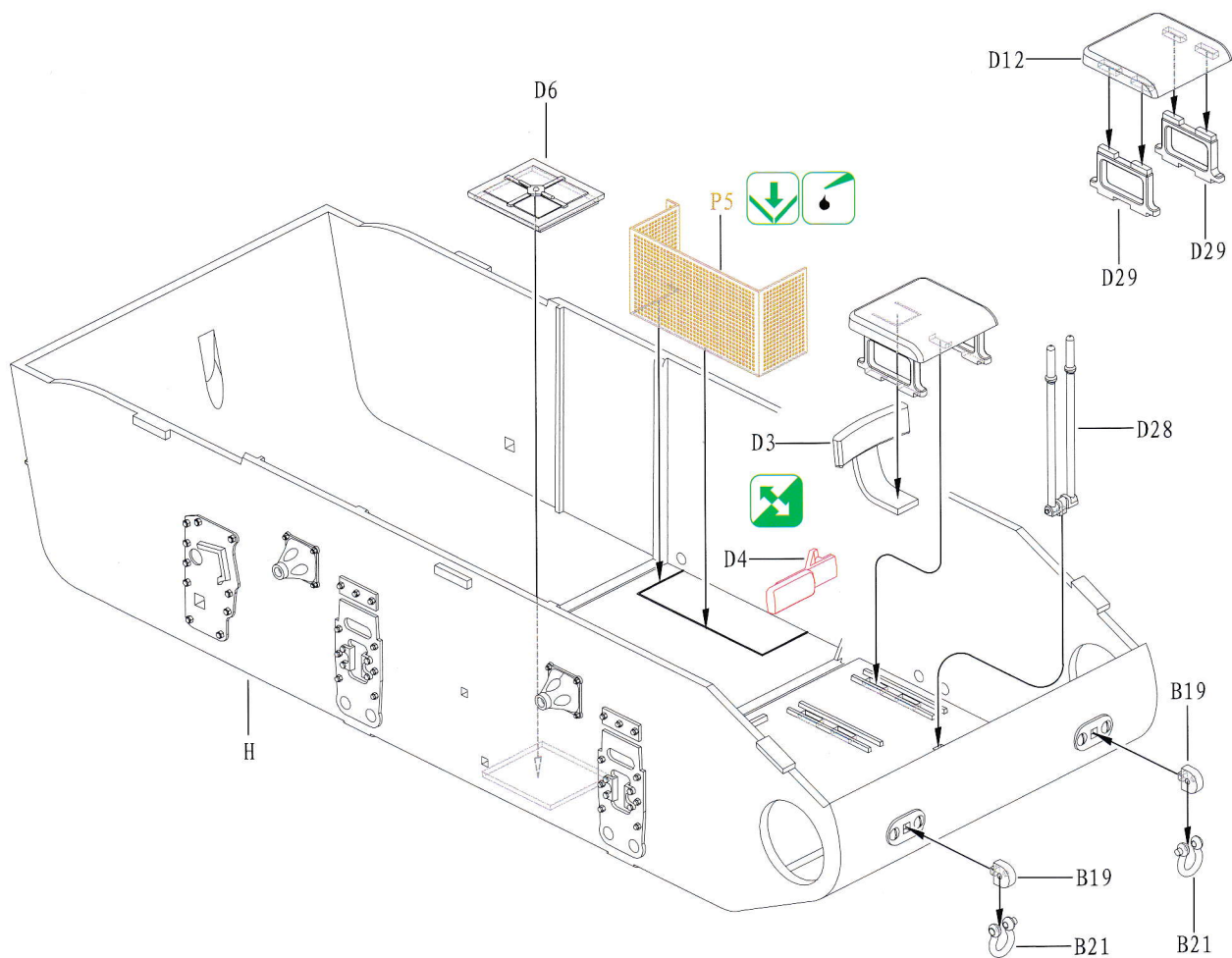
ILLUSTRATION 图示说明:

Caution:

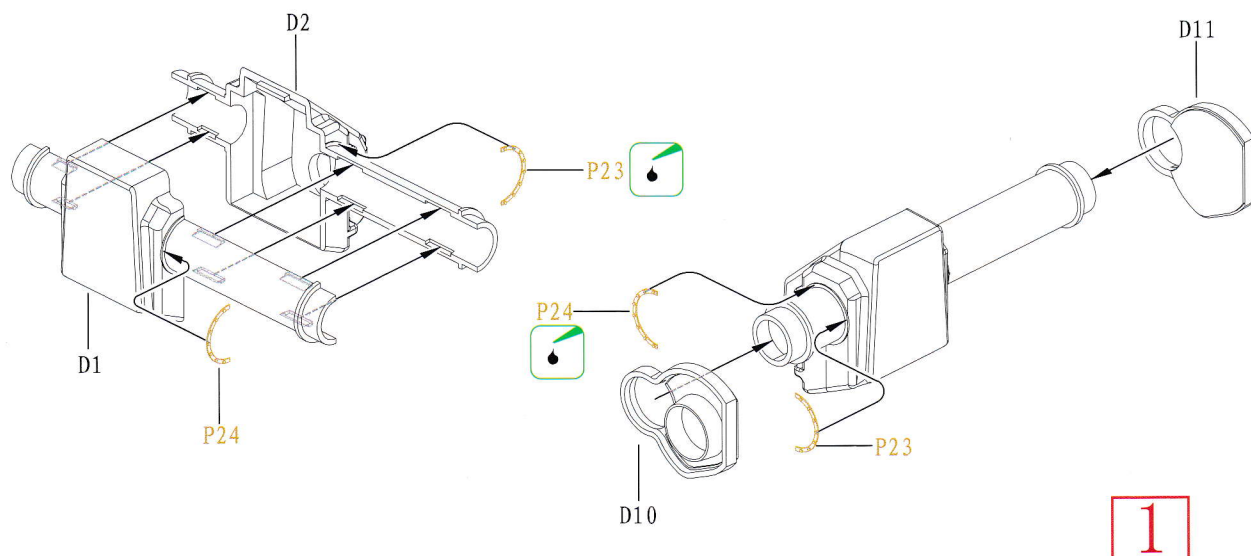
This kit contents a lot of small accurate parts, please carefully to read before to assembly.

此套件包含不少精细零件，请在制作前先翻阅说明书了解清楚。

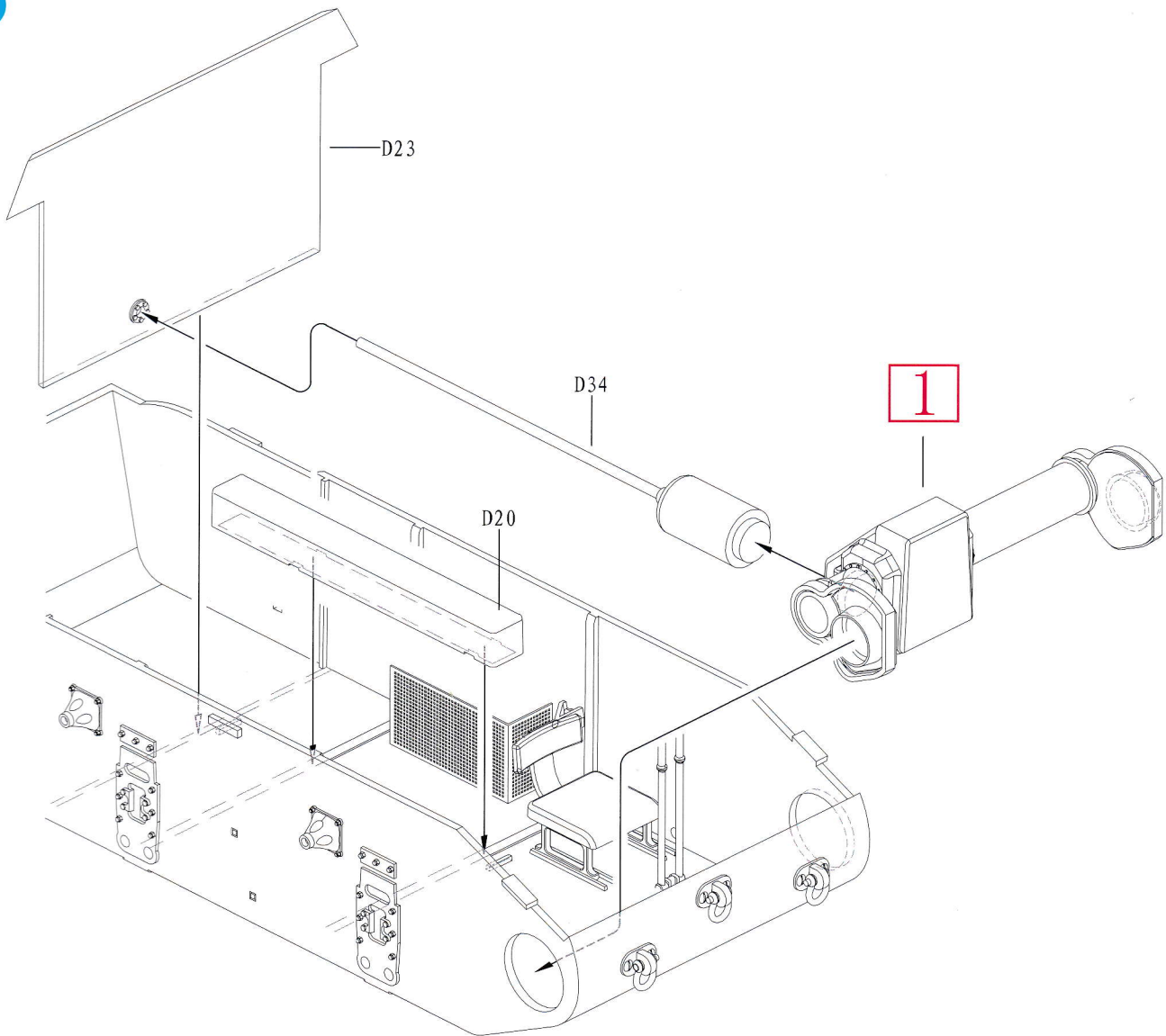
1



2



3



4

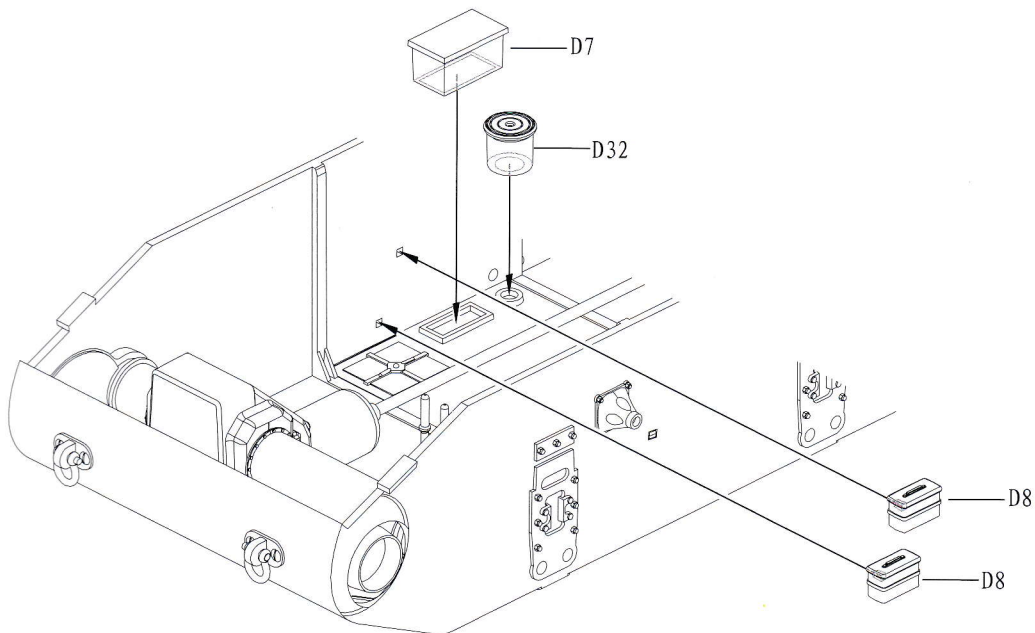
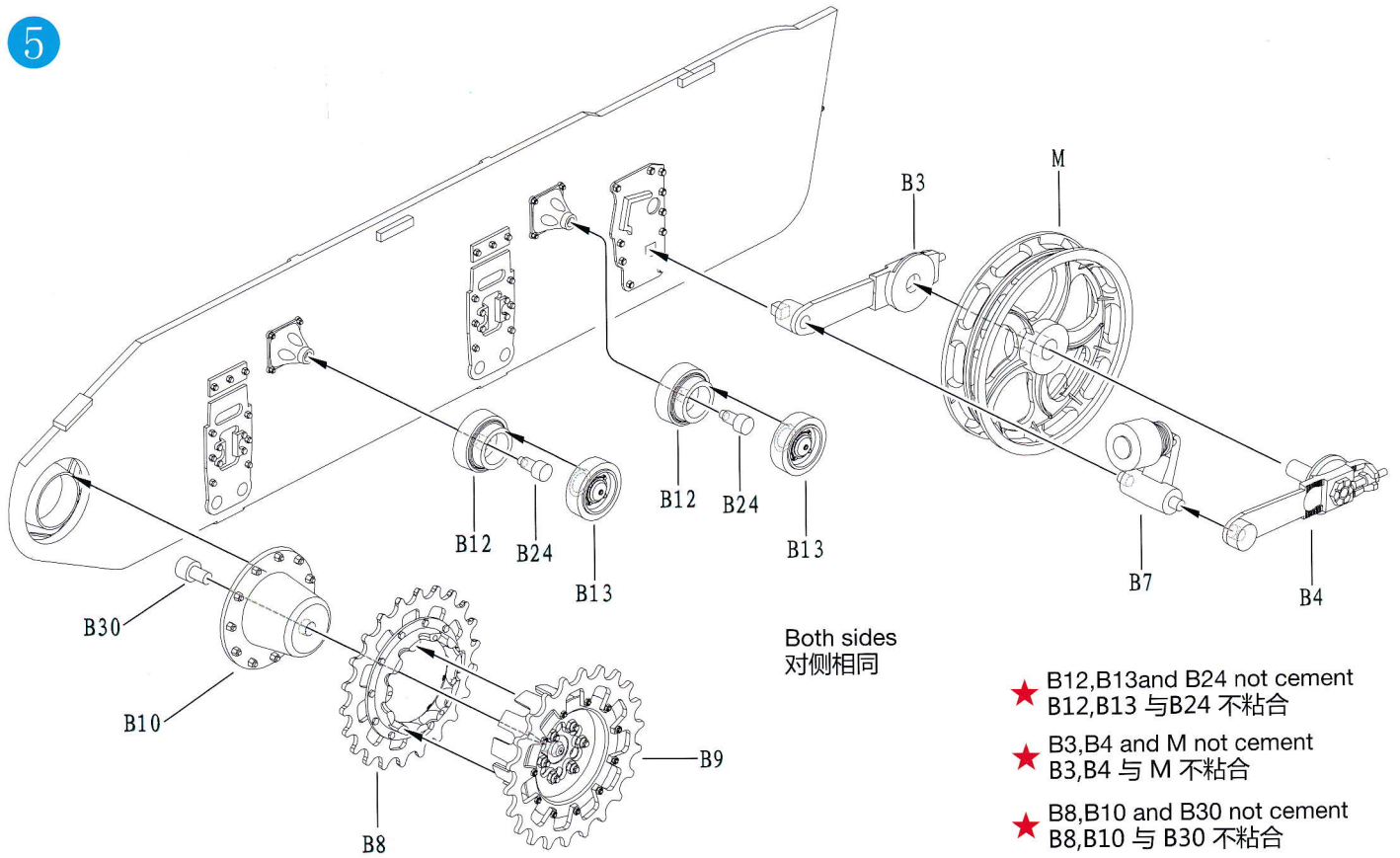
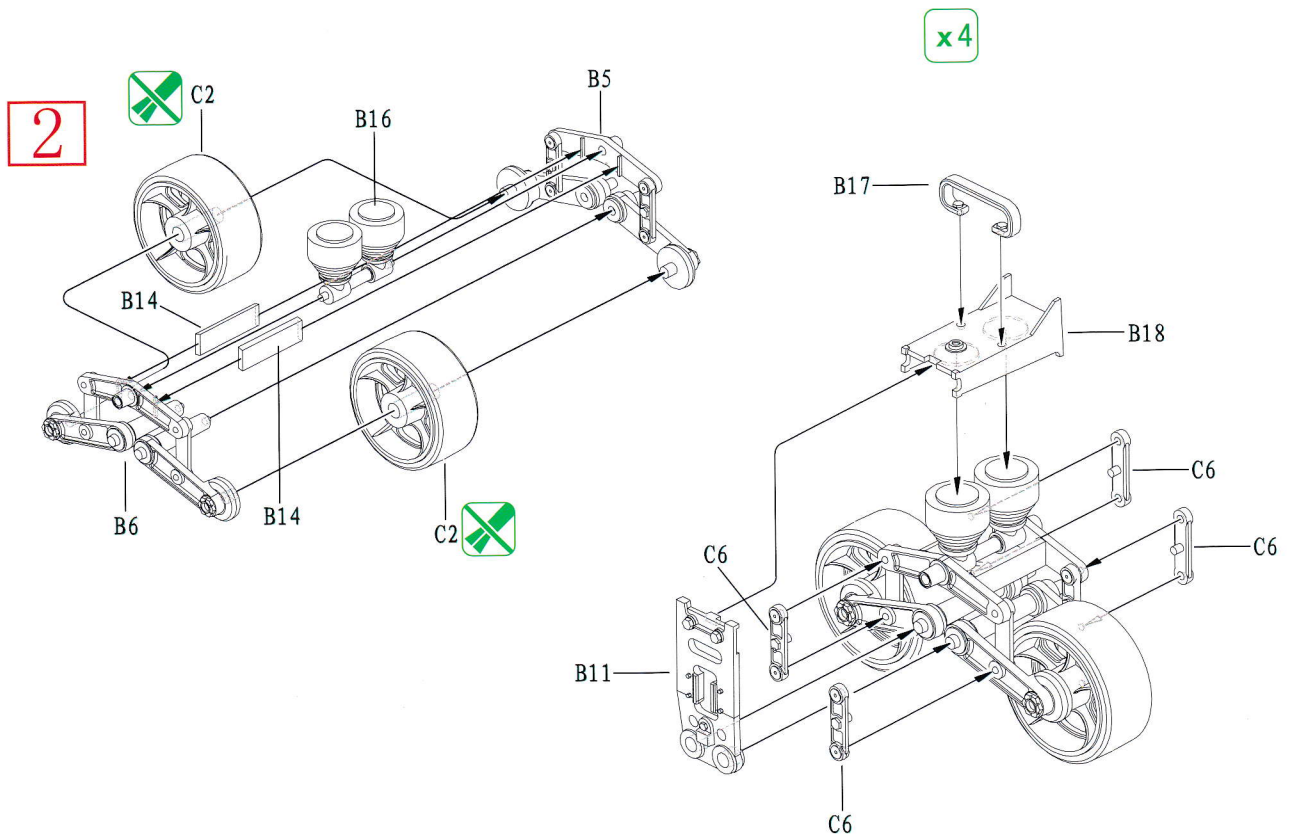


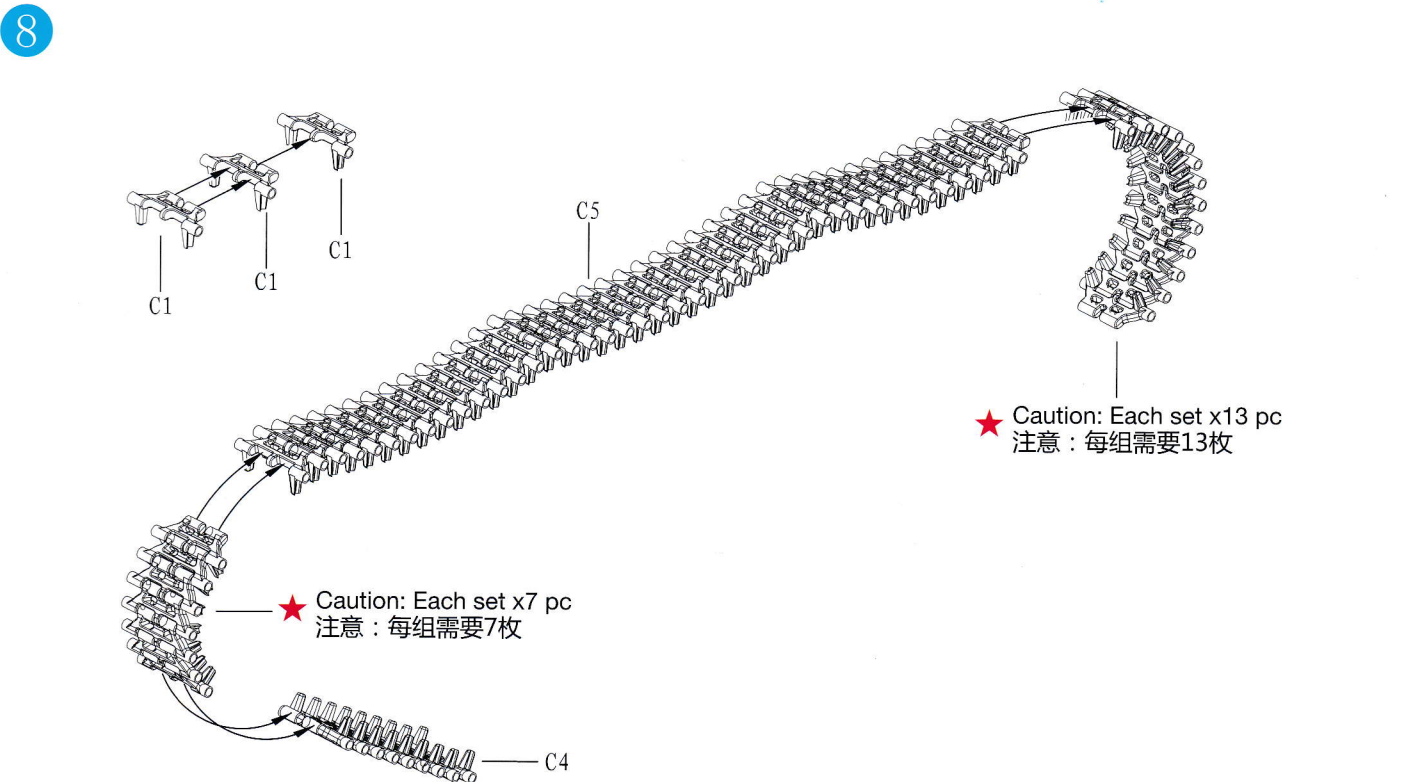
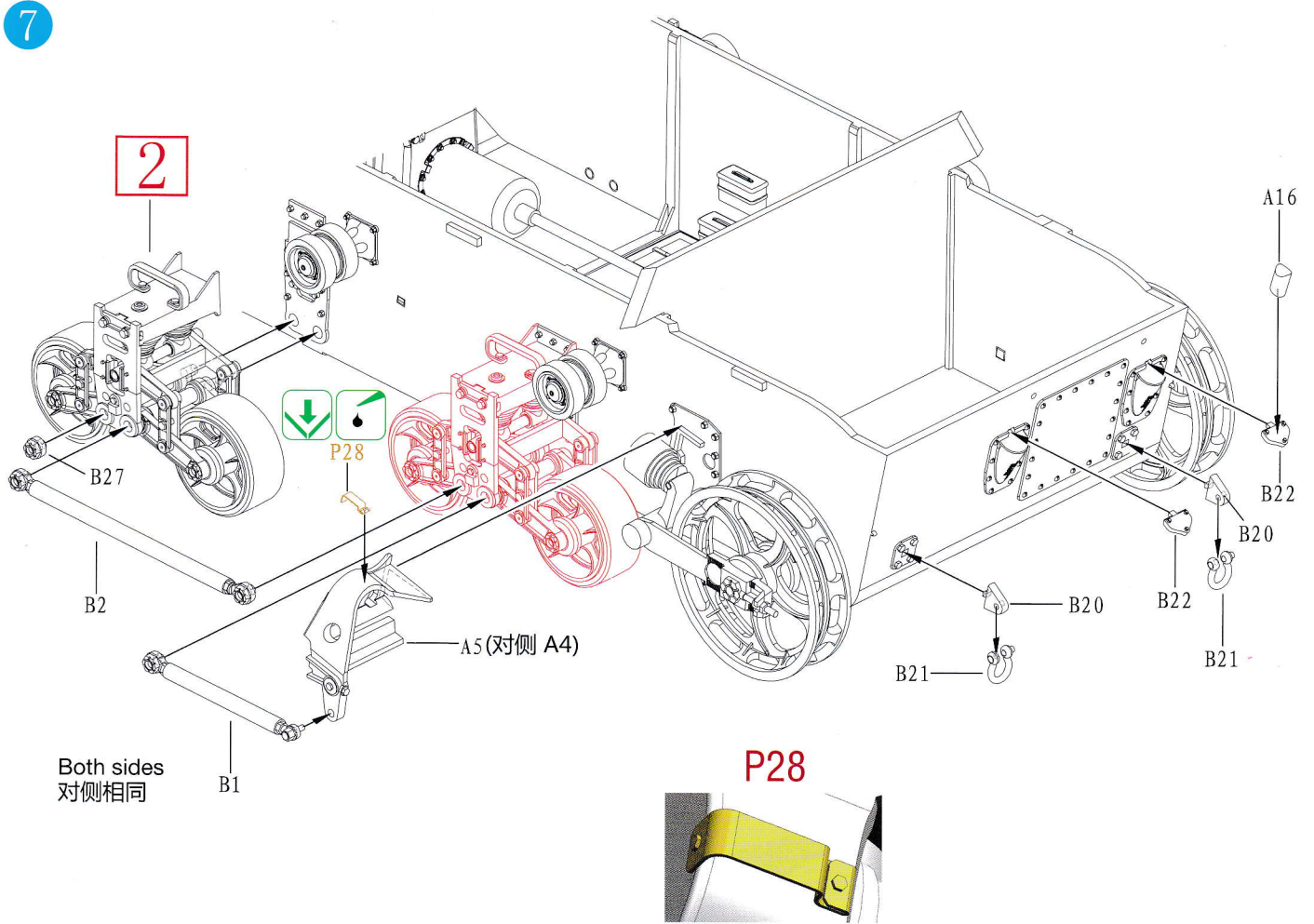
ILLUSTRATION 图示说明:

5

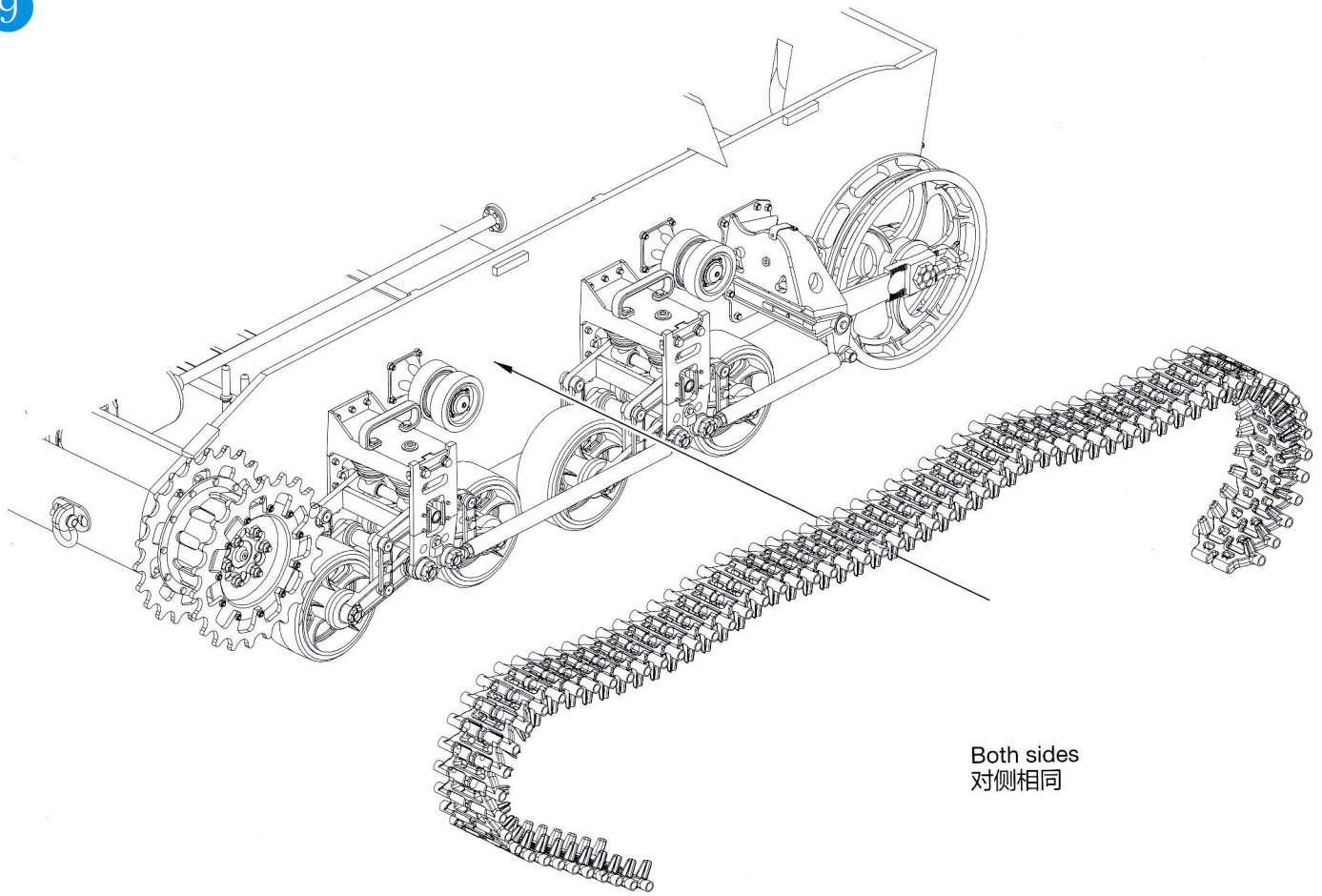


6



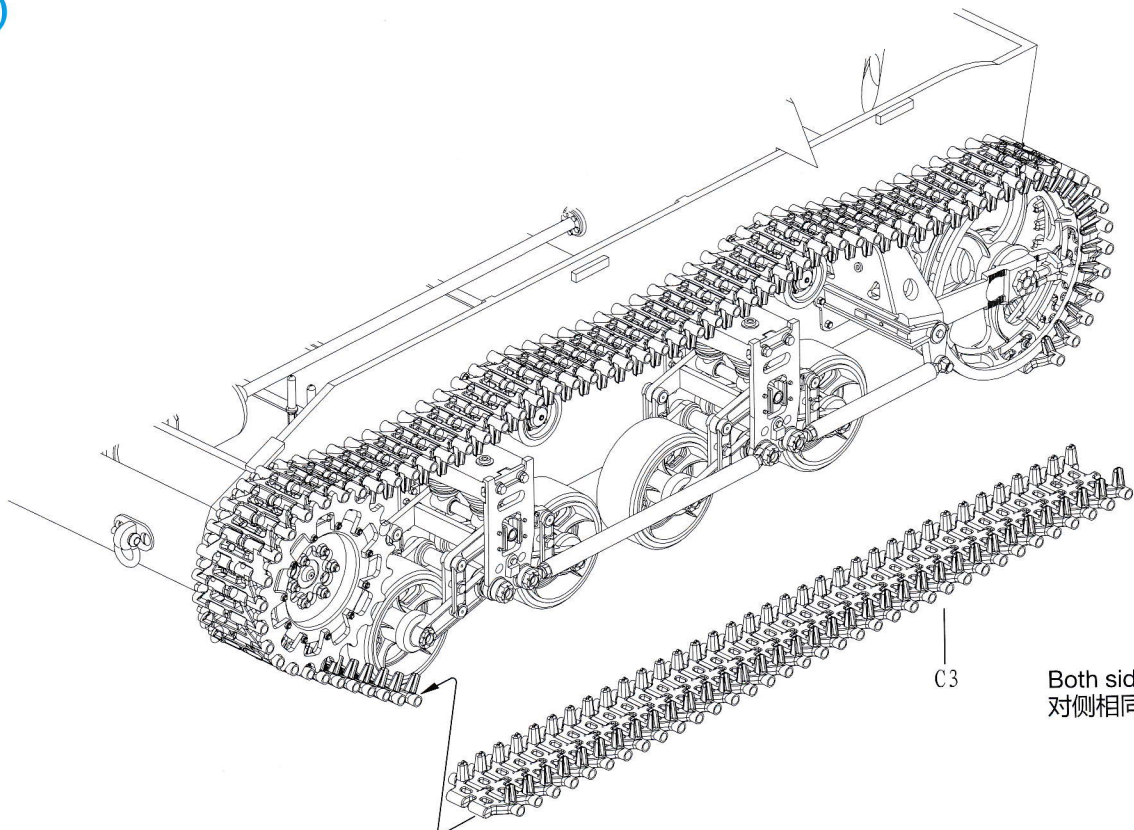


9



Both sides
对侧相同

10



C3

Both sides
对侧相同

11

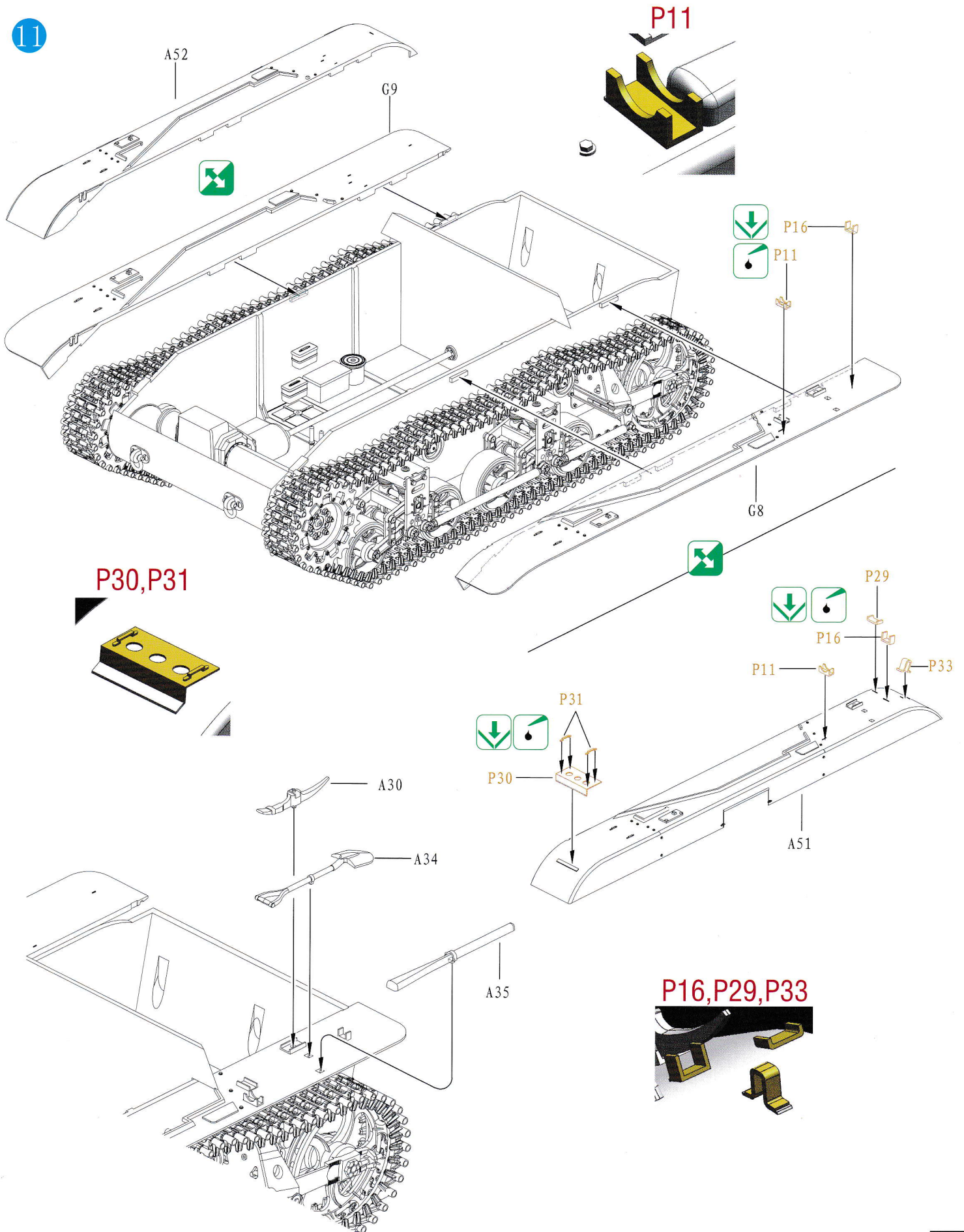
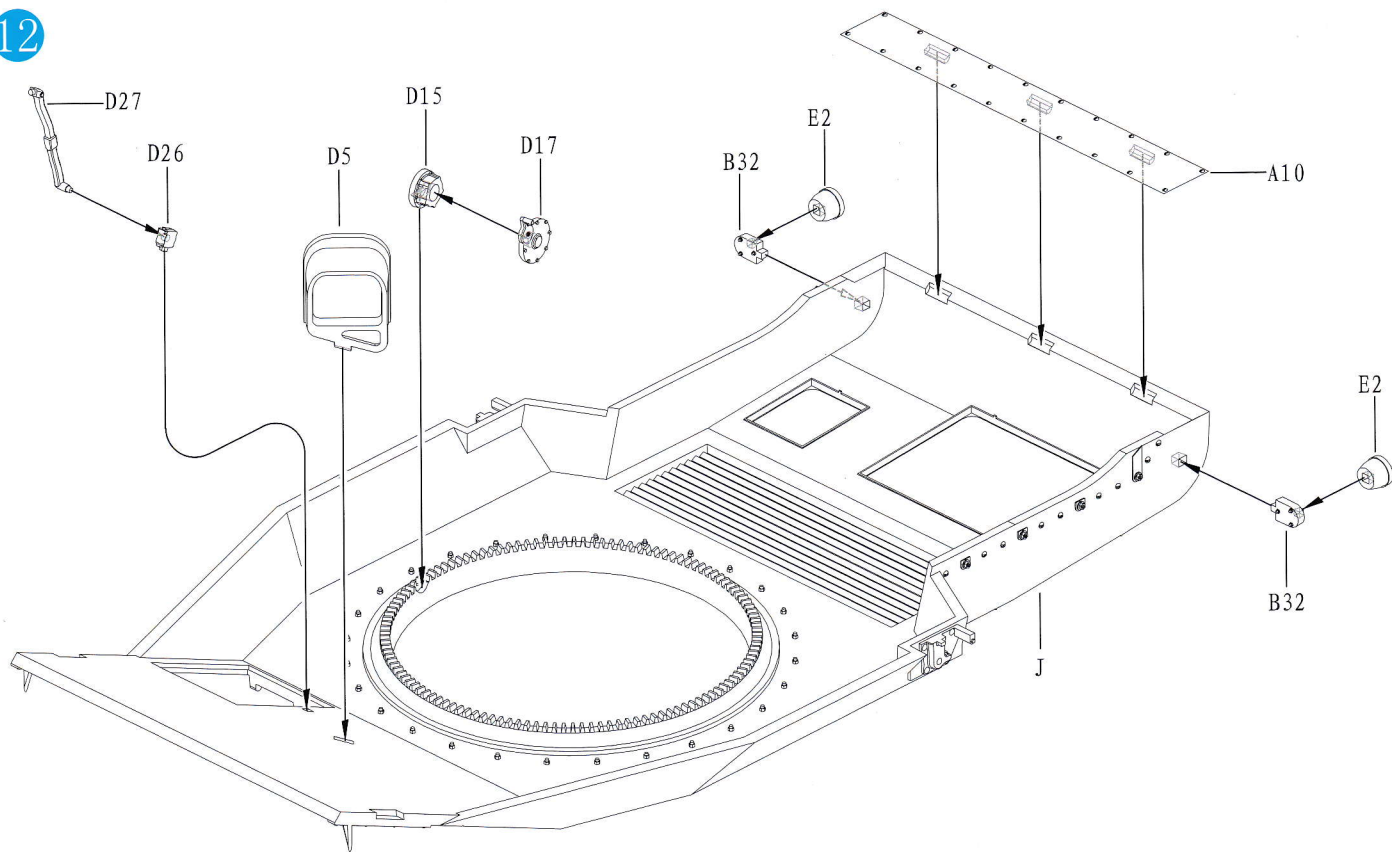
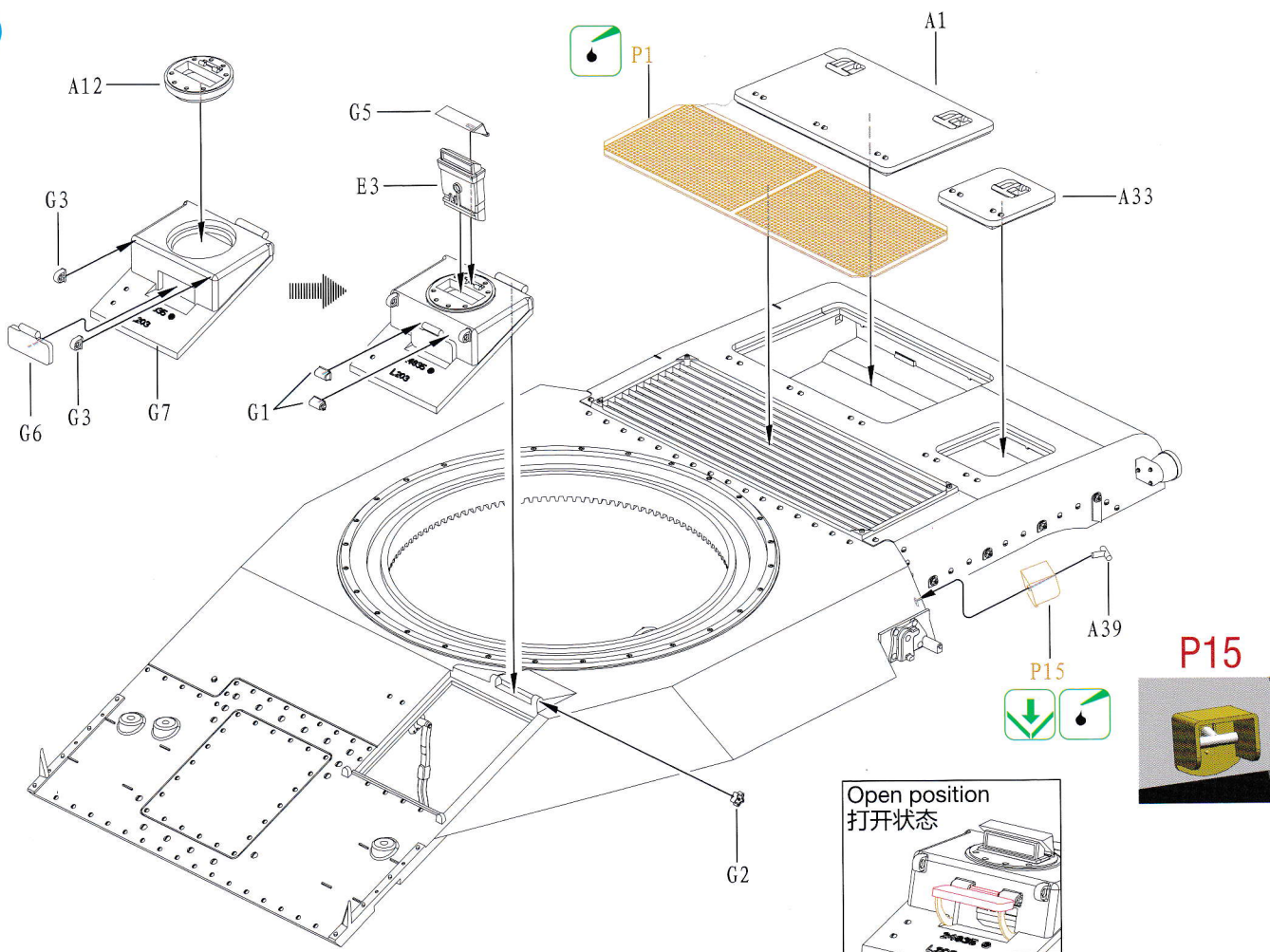


ILLUSTRATION 图示说明:

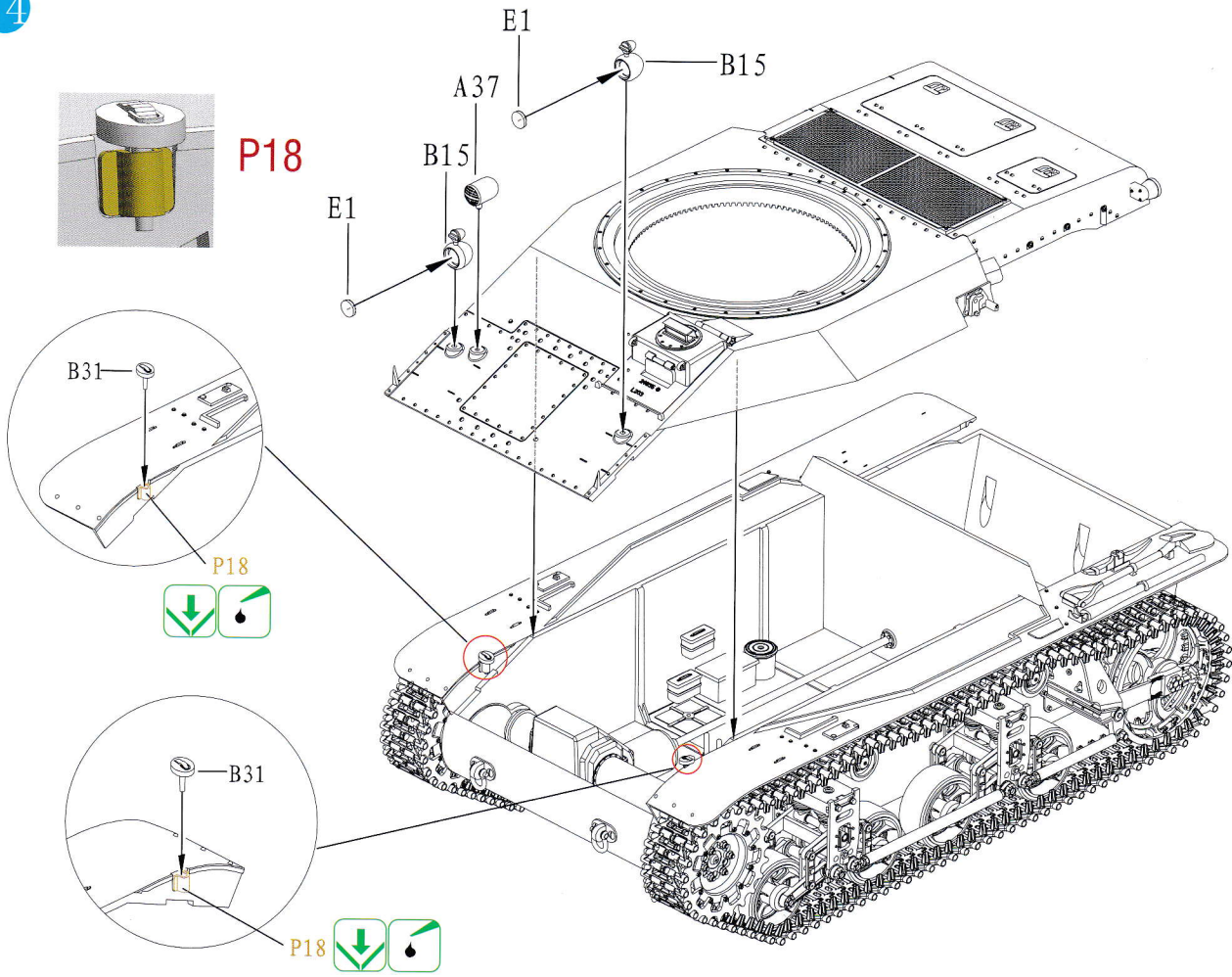
12



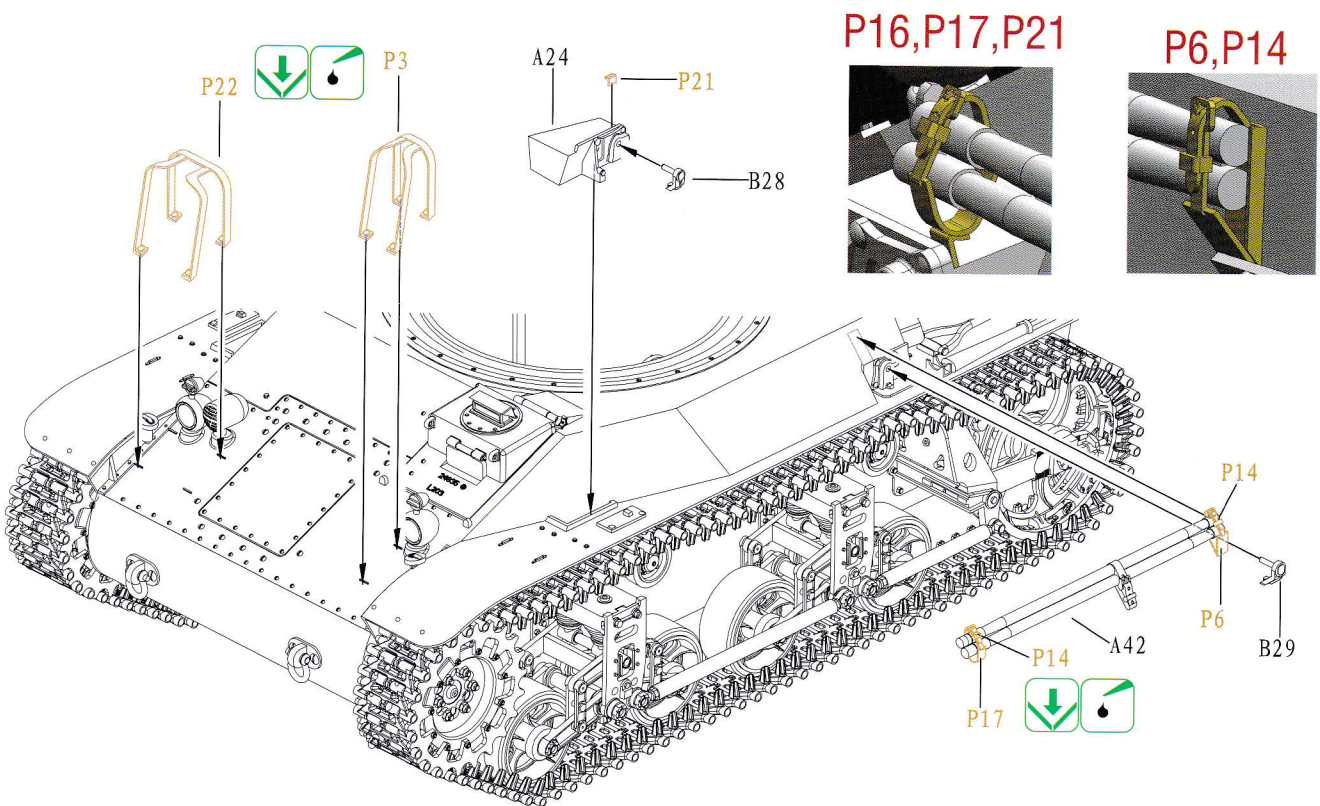
13



14

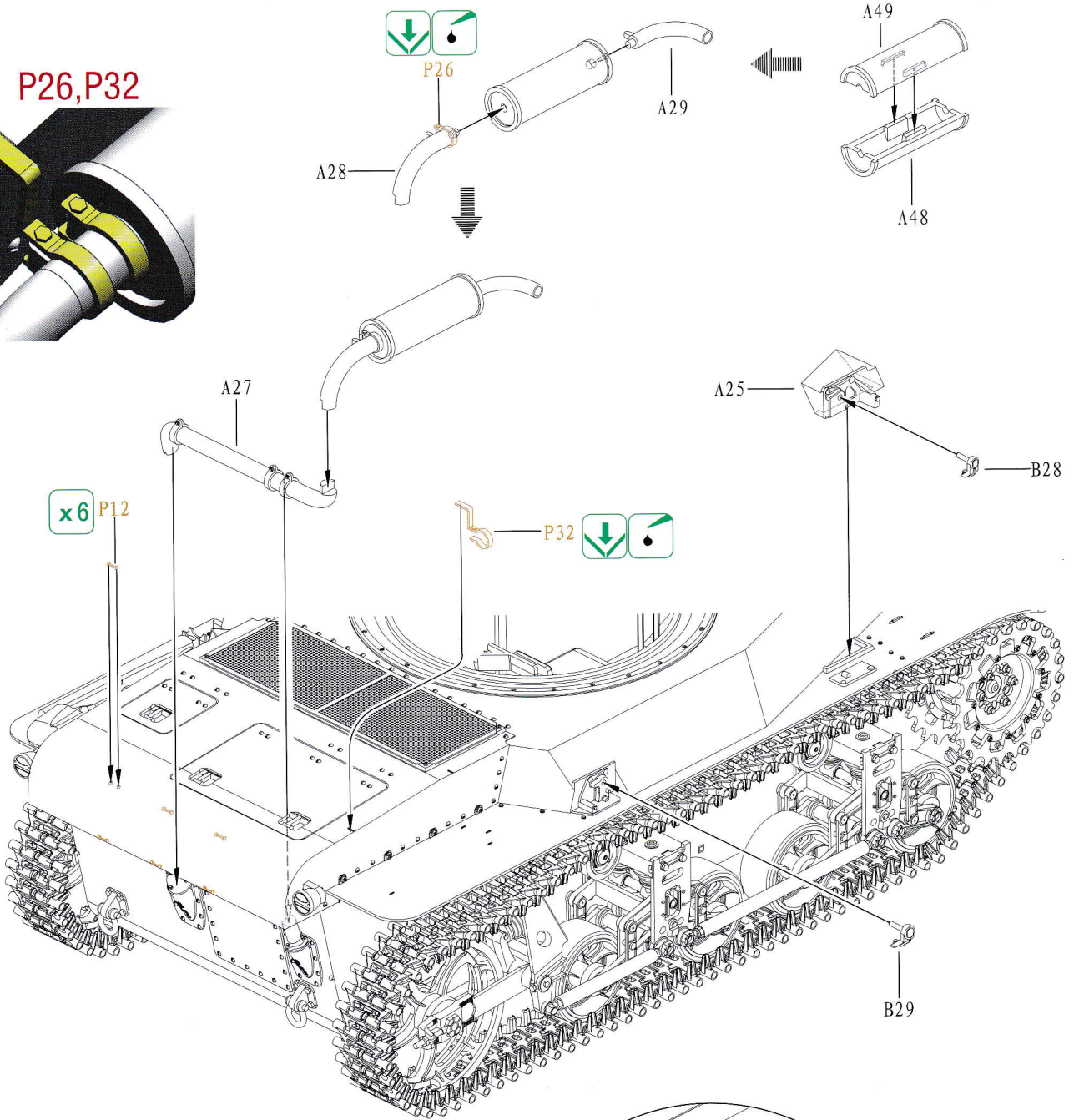
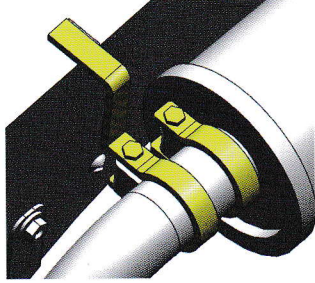


15

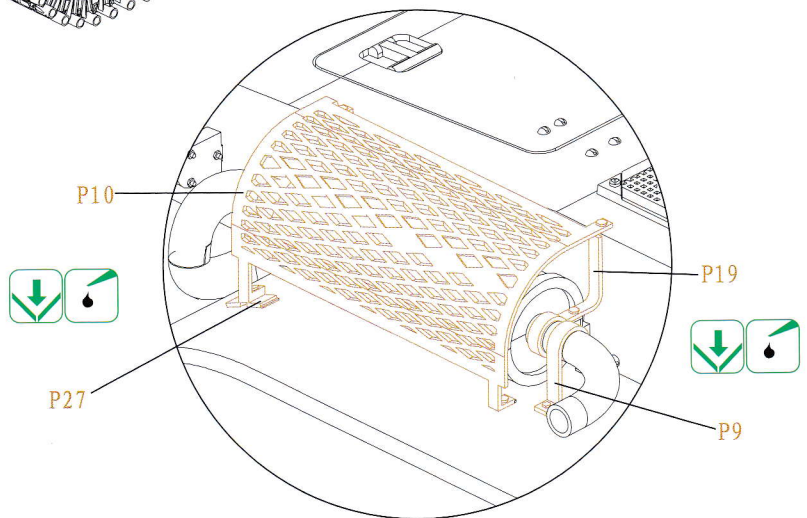
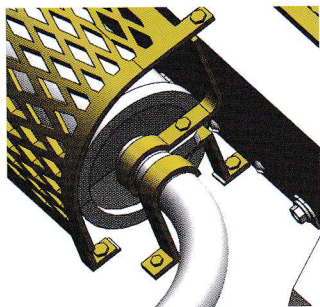


16

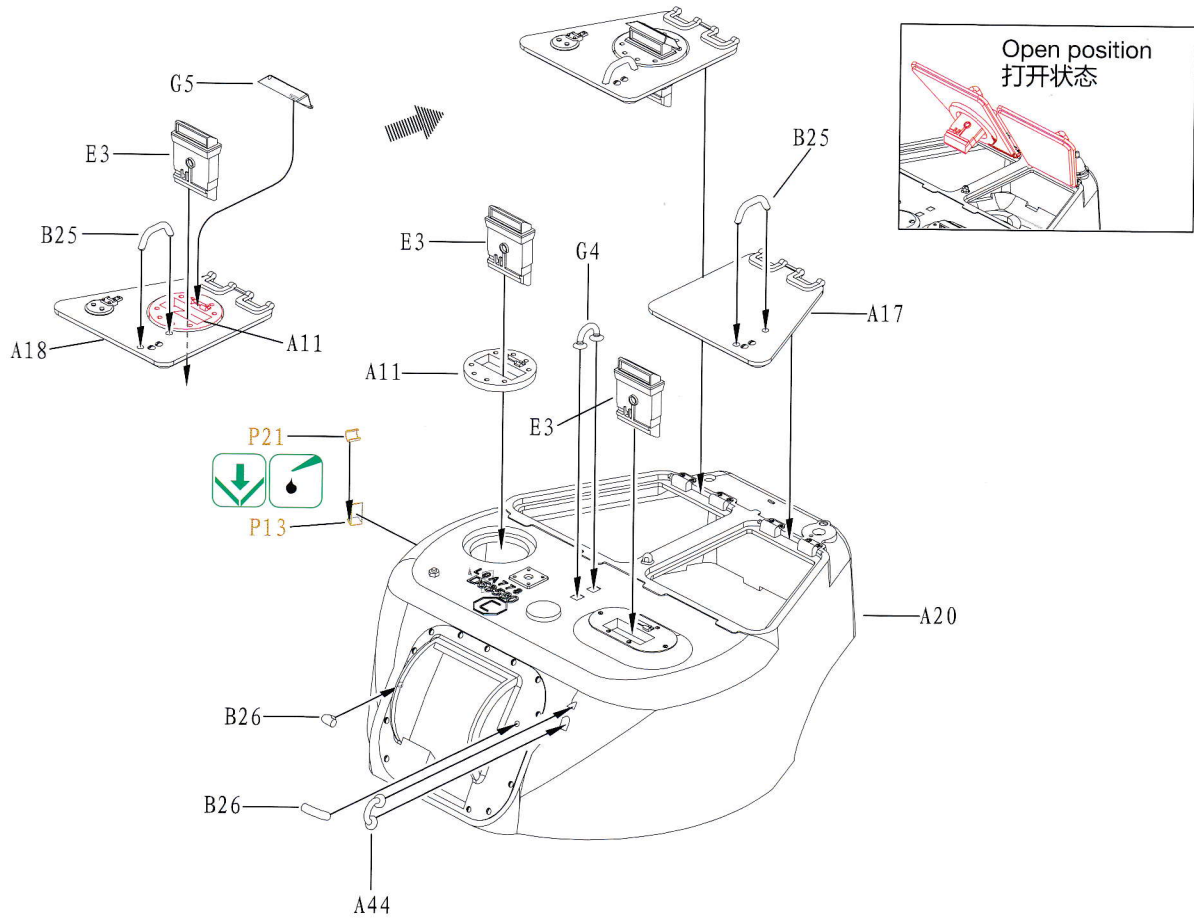
P26,P32



P9,P19



17



18

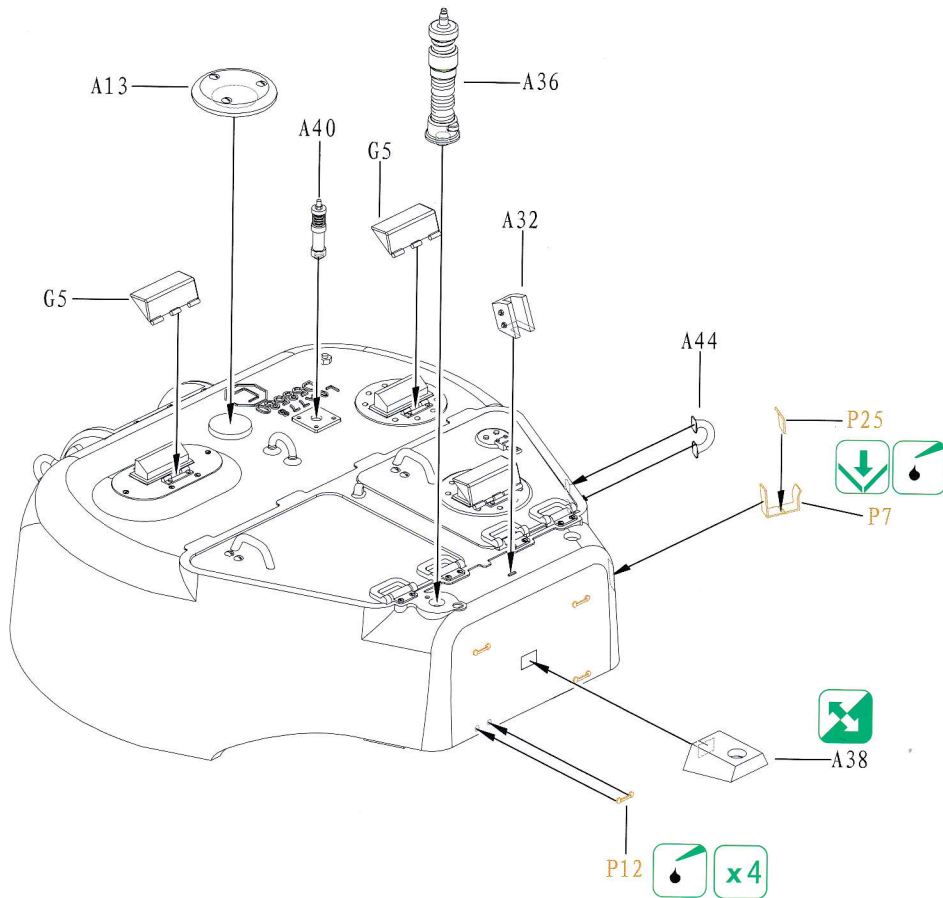
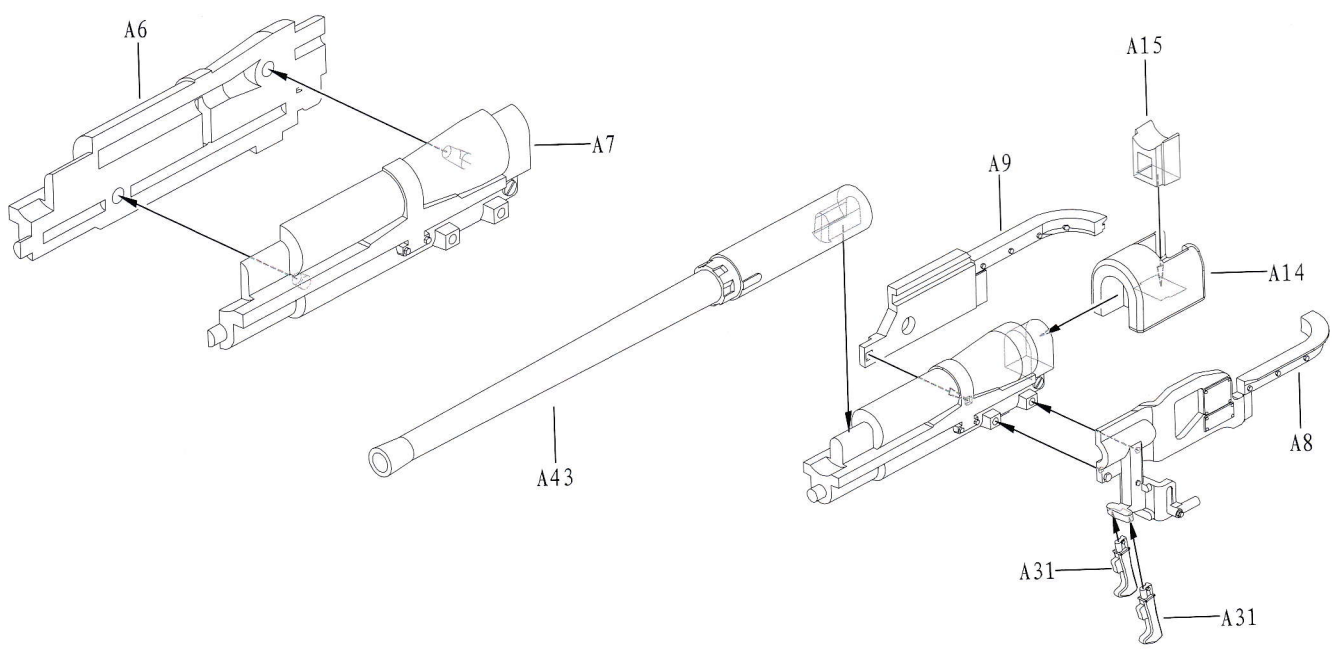
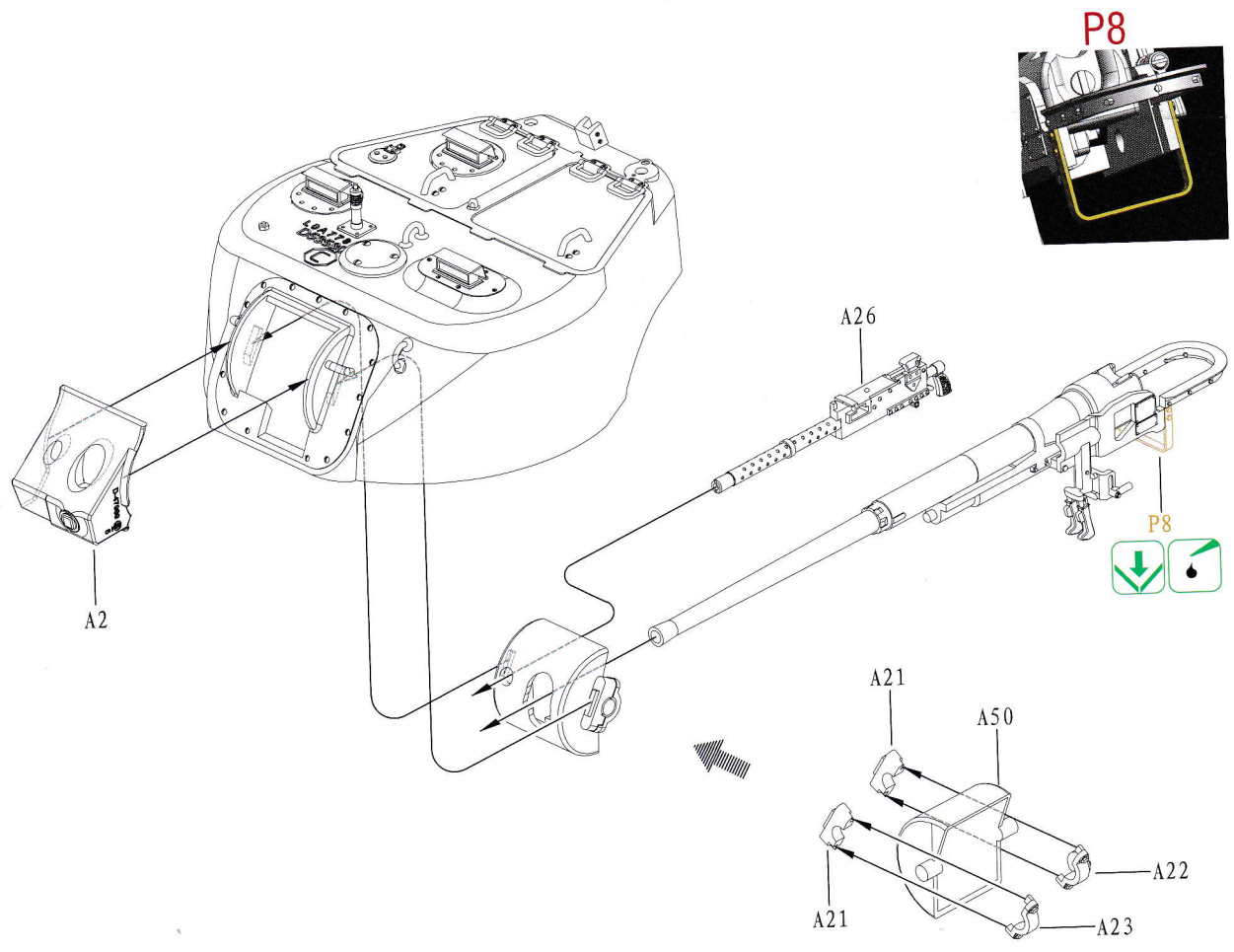


ILLUSTRATION 图示说明:

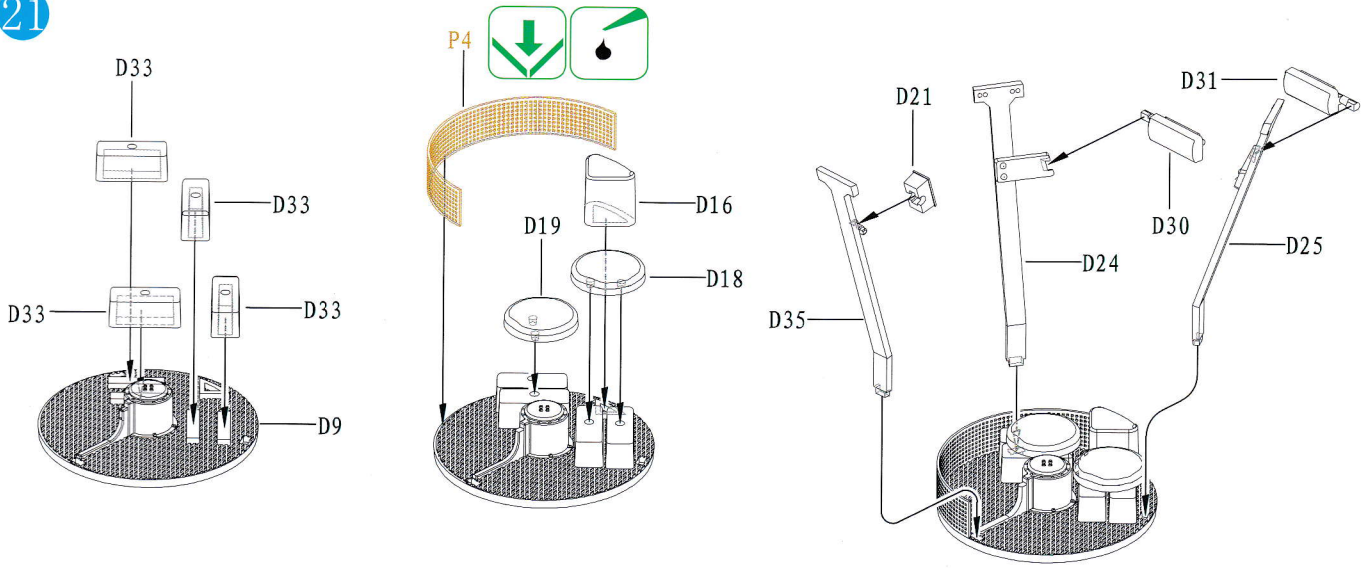
19



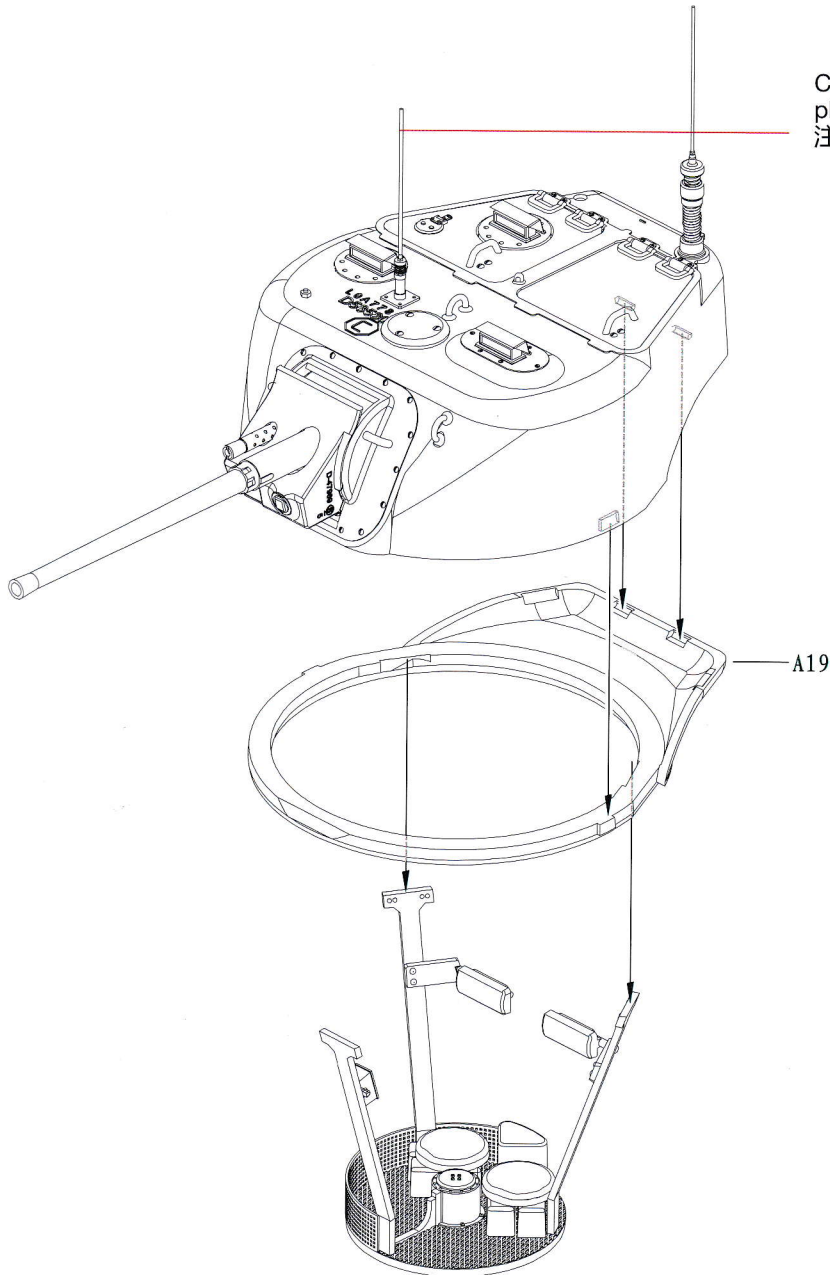
20



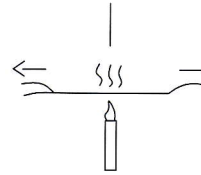
21

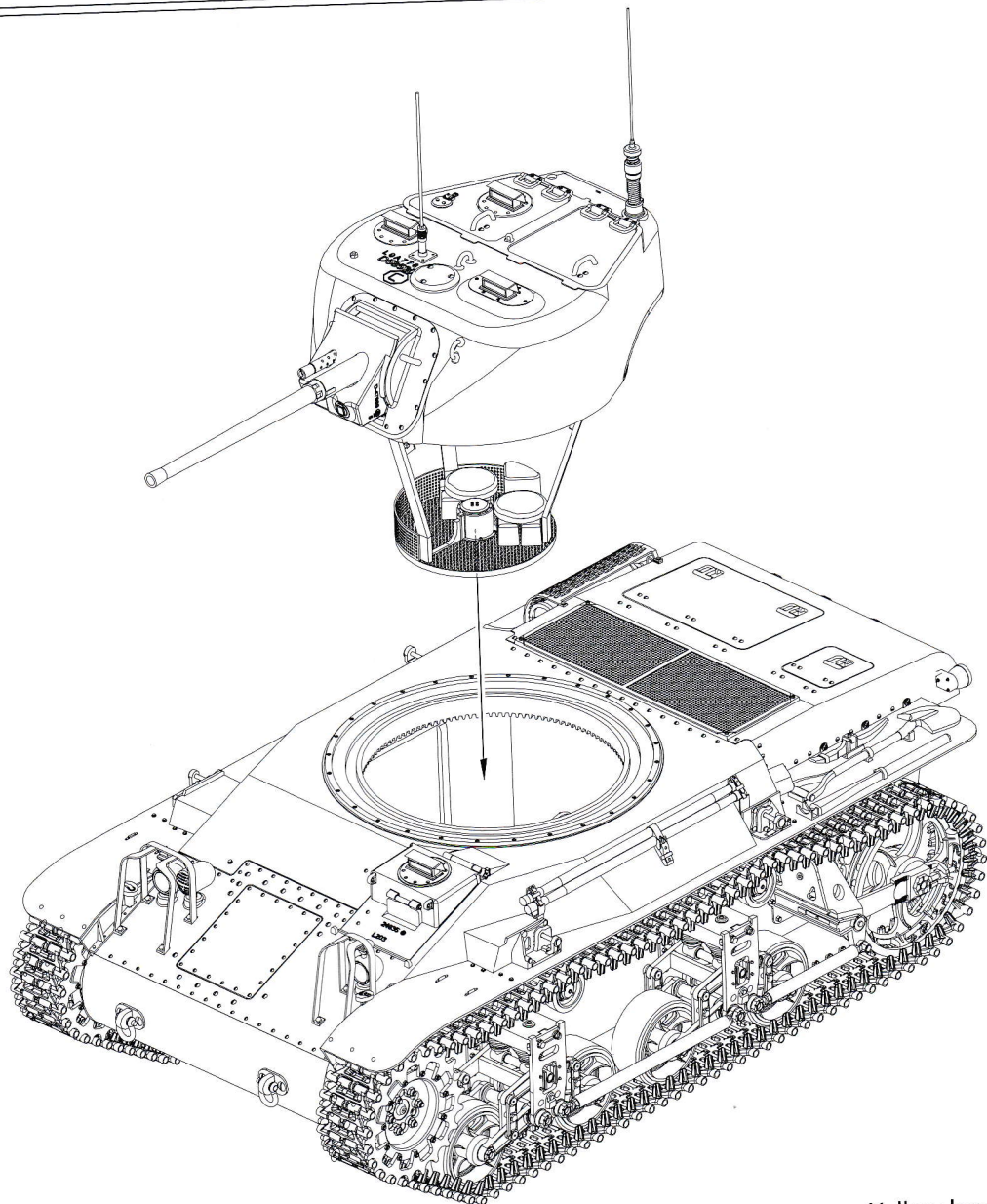


22

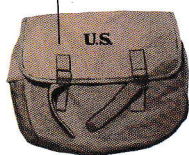


Caution: Make the antenna from the plastic frame channel with the heat of fire.
 注意：制作天线用流道加热拉丝。

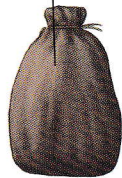




Yellow brown
黄褐色



Yellow brown
黄褐色

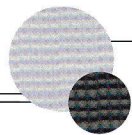


Yellow brown
黄褐色

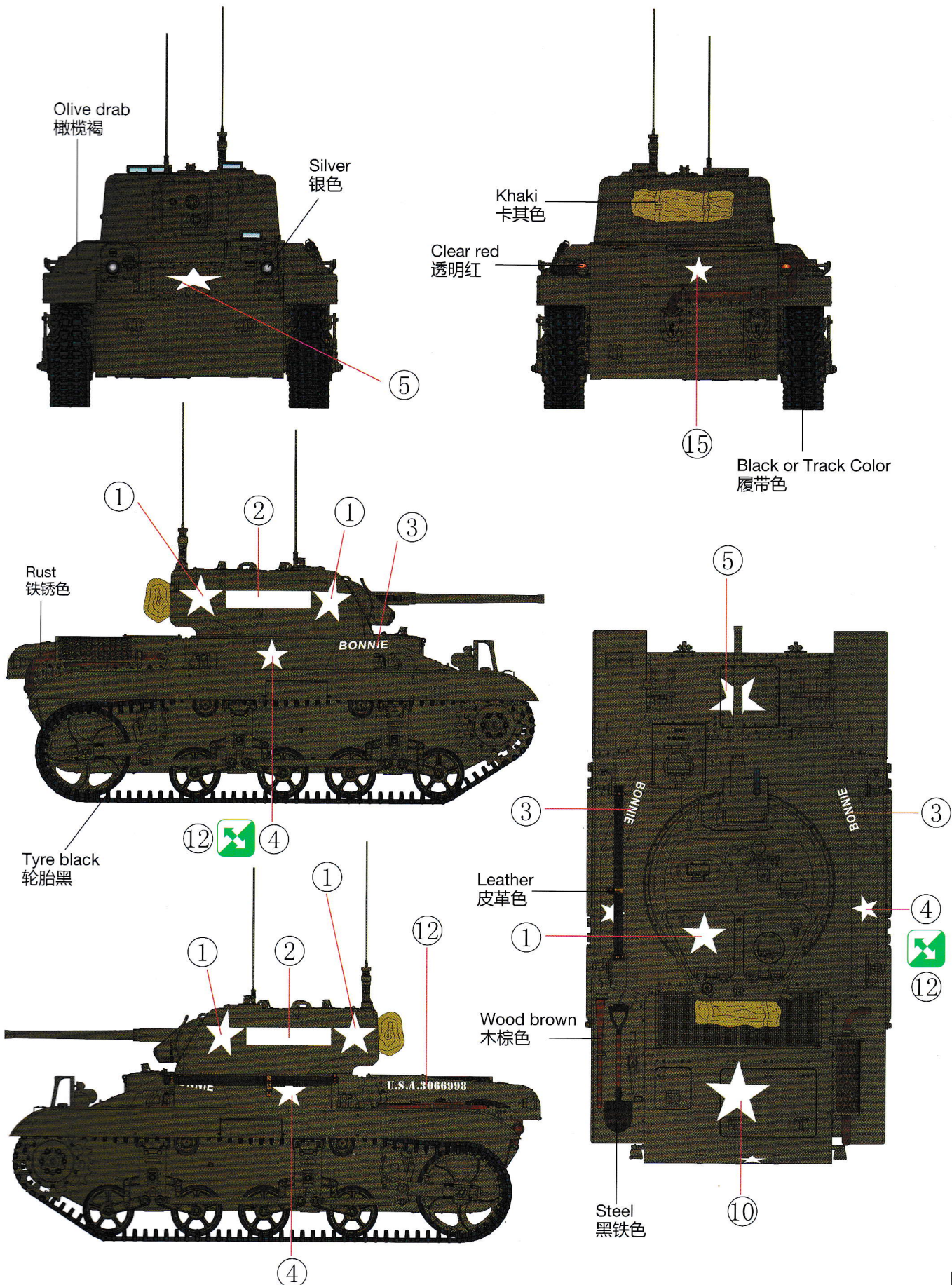


★ This is a precision molded plastic kit with exceptionally fine detail. It will require a little more care during assembly, but you feel the end result is well worth the effort.
本套件设计精密,零件繁多可能让你在制作过程中有所不便,但完成后会让你产生无穷之成功快感。

Happy modelling!
祝愿制作愉快!

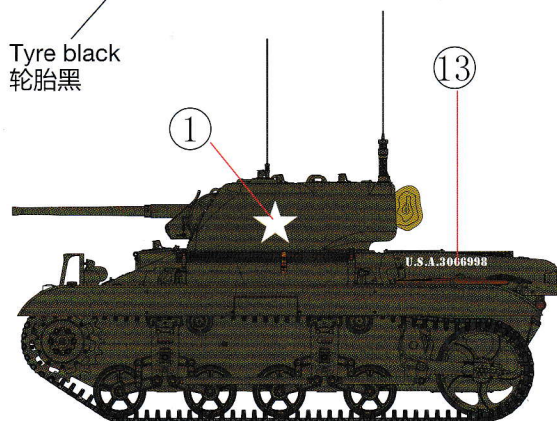
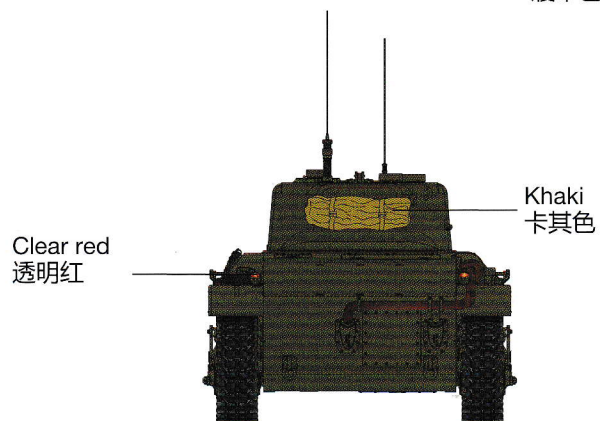
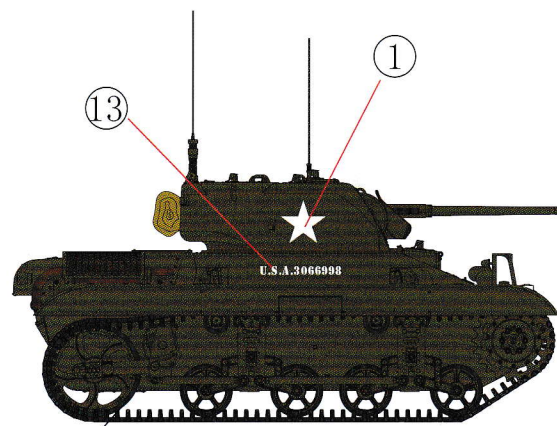
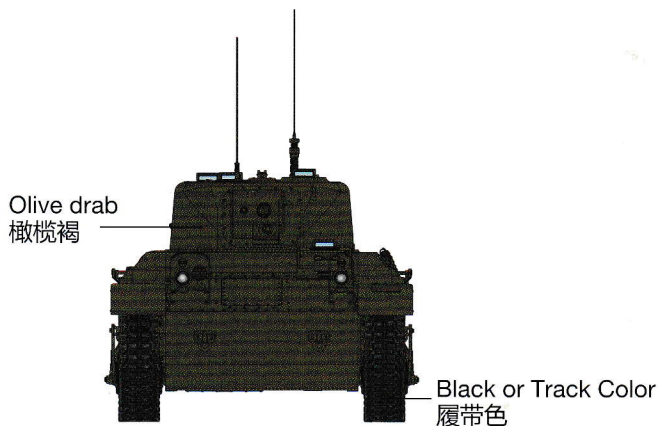


Option 1:

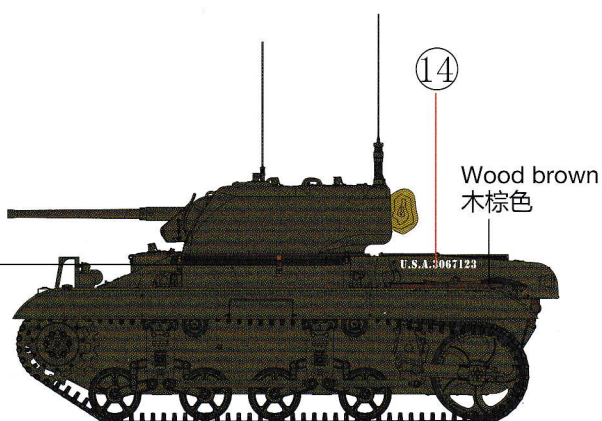
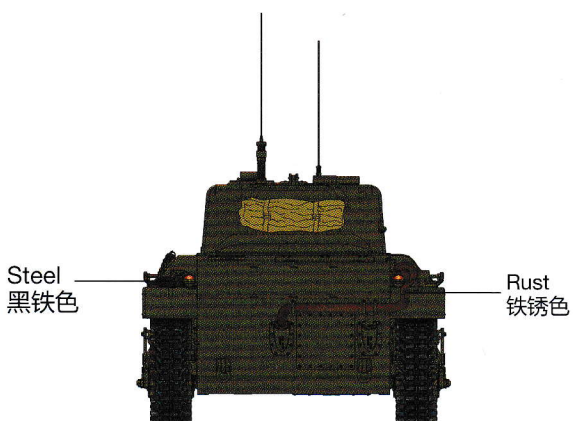
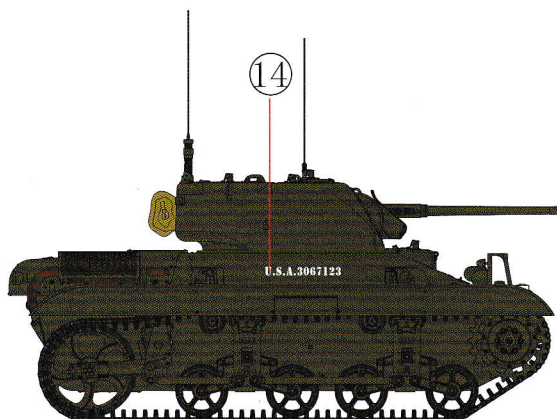
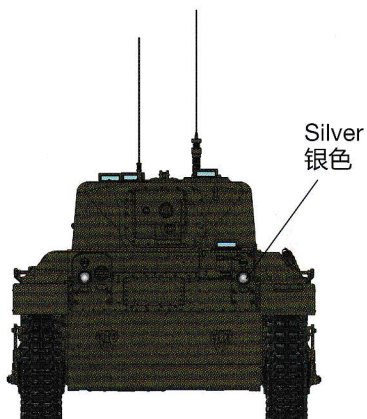


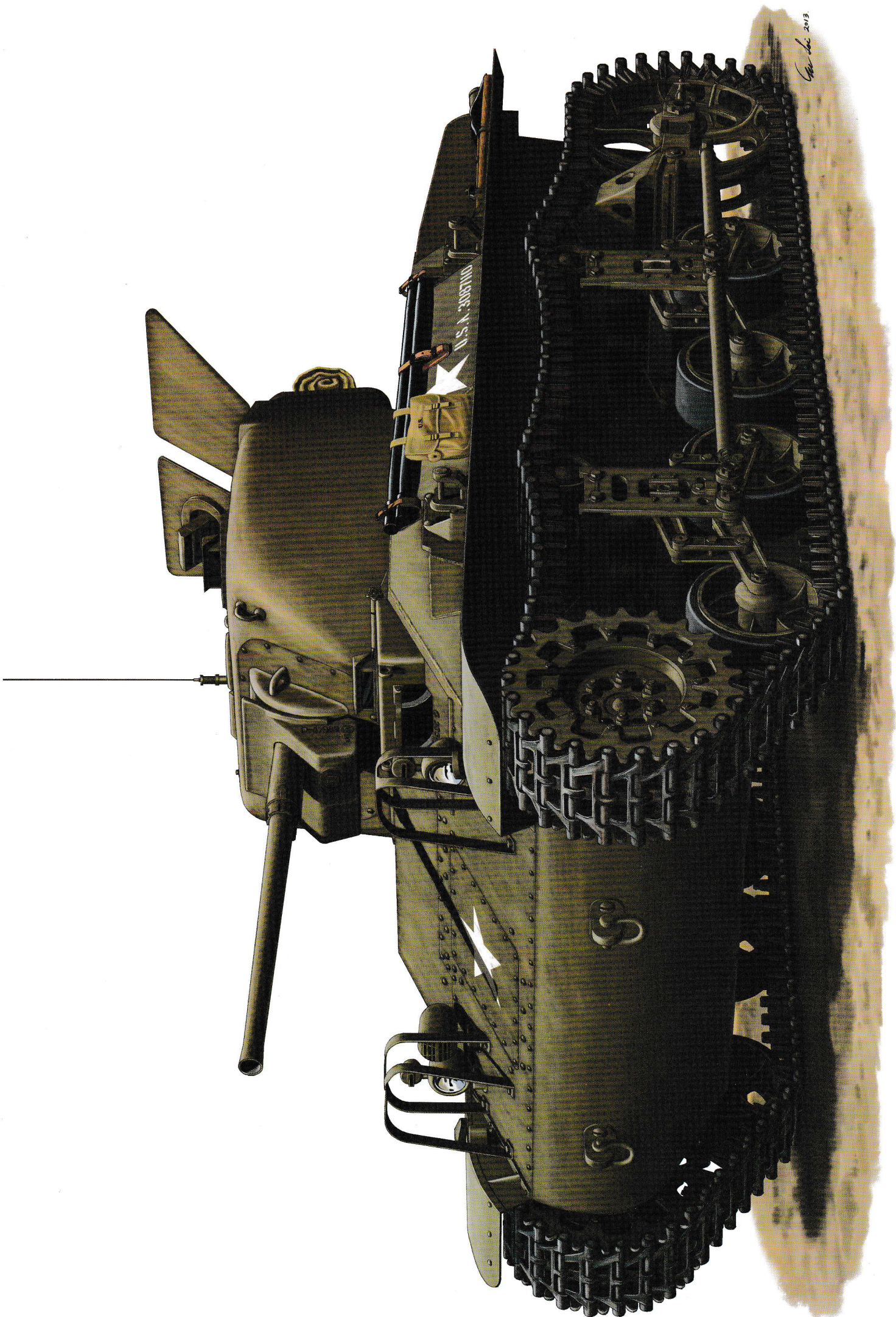
DECAL & COLOUR GUIDE 水贴及涂色指示:

Option 4:



Option 5:





Cap. Inc. 2013