

Heller

CITROËN C4 WRC

80756



Français

Comme sa glorieuse aînée la Xsara, la Citroën C4 WRC est une voiture dotée de quatre roues motrices, d'un moteur de 2 litres turbocompressé couplé à une boîte de vitesses transversale à 6 rapports. La particularité de C4 WRC est d'être plus longue que Xsara, dépassant 4m20, et de pouvoir ainsi réglementairement bénéficier d'une largeur plus importante, passant de 1770 à 1800mm. Ce changement permet théoriquement une meilleure stabilité en virage. Comme l'impose également la réglementation, l'aide électronique au pilotage est réduite, identique à celui de la Xsara dans sa configuration 2006. Toujours dans le cadre de la réduction budgétaire réglementaire, les sous-ensembles de la C4 WRC doivent aussi être plus fiables et conçus pour durer plus longtemps, tels le moteur, la boîte de vitesses, les différentiels avant, central et arrière, les amortisseurs...

Le véhicule d'essai a été utilisé pour tester la technique et pour des trajets de réglage et était dépourvu d'autocollants.

English

Like its glorious predecessor the Xsara, the Citroën C4 WRC is a car equipped with four-wheel drive, a 2-liter turbocharged engine coupled with a 6-speed transverse gearbox. What's different about the C4 WRC is that it's longer than the Xsara; eat over 4.20m, thus benefiting from an increased width from 1.77m to 1.80m. This change theoretically gives it better cornering stability. As regulation also requires, the use of electronic driving aids is limited, the same as with the Xsara's 2006 configuration. Still within the framework of regulatory budget reduction, the C4 WRC's sub-assemblies should also be more reliable and built to last longer, including the engine, gearbox, front differentials, center and rear suspension etc.

The test vehicle was used to test the technology and for set-up runs and was unmarked.

Deutsch

Wie sein ruhmvoller Vorgänger der Xsara war der Citroën C4 WRC mit Allradantrieb, einem 2-Liter-Turbomotor und einem quer liegenden Sechsganggetriebe ausgestattet. Das Besondere am C4 WRC ist seine Länge von 4,20 m, mit der er den Xsara übertrifft, sodass seine Breite gemäß Reglement von 1,77 auf 1,80 m verbreitert werden konnte. Diese Änderung verlieh ihm theoretisch eine bessere Kurvenstabilität. Wie vom Reglement verlangt, war die Hilfelektronik für den Fahrer reduziert worden und war jetzt mit der des Xsara in der Konfiguration 2006 identisch. Ebenfalls im Rahmen der vom Reglement geforderten Kostensenkung mussten die Baugruppen des C4 WRC, wie der Motor, das Getriebe, Vorder- und Hinterradachsenantriebe sowie das Ausgleichsgetriebe, die Stoßdämpfer zuverlässiger sein und für eine längere Lebensdauer ausgelegt werden.

Das Test Fahrzeug wurde zur Erprobung der Technik und für Einstellungsfahrten genutzt und war unbeschriftet.

Longueur	4,27 m
Largeur	1,80 m
Hauteur	1.40 m
Moteur	Type: XU7JP4 Straight 4, 4 cylindres, 16 soupapes, refroidissement par liquide Disposition: avant, monté transversalement, incliné à 25° vers l'échappement
Cylindrée	1.998 cm ³
Puissance	315 CV DIN à 5.500 tr/mn
Poids à vide	1.230 kg

Length	4.27 m
Width	1.80 m
Height	1.40 m
Engine	Type: XU7JP4 Straight 4, 4 cylindres, 16-valve, liquid cooled Layout: front, crosswise layout, tilted 25° towards the exhaust
Capacity	1998 cc
Power	315 bhp at 5500 rpm
Empty weight	1230 kg

Länge	4,27 m
Breite	1,80 m
Höhe	1.40 m
Motor	Typ: XU7JP4 Straight 4, 4 Zylinder, 16 Ventile, Flüssigkeitskühlung Anordnung: vorne, quer montiert, um 25° geneigt in Richtung Auspuffstrang
Hubraum	1.998 cm ³
Leistung	315 PS DIN bei 5.500 U/min
Leergewicht	1.230 kg

Español

Como su glorioso predecesor, el Xsara, el Citroën C4 WRC es un coche con tracción a las cuatro ruedas, un motor de 2 litros turboalimentado acoplado a una caja de cambios transversal de 6 velocidades. La particularidad del C4 WRC es que su longitud sobrepasa a la del Xsara, siendo esta superior a 4,20 metros, y por tanto posee una mayor anchura legal, pasando de 1,77 a 1,80 m. Este cambio, le da en teoría una mayor estabilidad en las curvas. Como también lo exige el reglamento, la ayuda electrónica a la conducción se reduce, siendo igual a la del Xsara en su configuración de 2006. Siempre dentro del marco de reducción presupuestaria legal, los subconjuntos del C4 WRC deben ser también más fiables y hechos para durar más tiempo, como por ejemplo: el motor, la caja de cambios, los diferenciales delantero, central y trasero, los amortiguadores...

El vehículo de pruebas se utilizó para probar la tecnología y para realizar recorridos de ajuste y no estaba pegado.

Italiano

Come la sua gloriosa antenata Xsara, la Citroën C4 WRC è un'automobile con quattro ruote motrici e un motore turbocompresso da 2 litri accoppiato a un cambio trasversale a 6 rapporti. La particolarità della C4 WRC è di essere più lunga della Xsara, oltre 4,20 metri, e di poter quindi raggiungere una maggiore larghezza regolamentare, passando da 1,77 a 1,80 metri. Questa caratteristica consente di ottenere una migliore stabilità in curva. Conformemente alle normative, l'assistenza elettronica alla guida è ridotta, identica a quella della Xsara nella sua configurazione del 2006. Inoltre, i sistemi della C4 WRC, come il motore, il cambio, i differenziali anteriore, centrale e posteriore, gli ammortizzatori e così via, sono più affidabili e progettati per durare più a lungo.

Il veicolo di prova è stato utilizzato per testare la tecnologia e per le corse di impostazione ed era privo di sticker.

Nederlands

Net als haar voortreffelijke voorganger de Xsara, is de Citroën C4 WRC een auto uitgerust met vierwielaandrijving en een motor met een 2 liter turbocompressor gekoppeld aan een transversale 6-traps versnellingsbak. De C4 WRC is met een lengte van 4,20m een stuk langer dan de Xsara, en kan hierdoor eveneens overeenkomstig de voorschriften genieten van een grotere breedte, voordien 1,77m en nu 1,80m. Deze wijziging zorgt in principe voor een betere stabiliteit in bochten. Eveneens in navolging van de voorschriften is de elektronische besturingsondersteuning verminderd, deze is nu dezelfde als die van de Xsara configuratie van 2006. Verder moeten in het kader van de reglementaire budgetvermindering, de onderdelen van de C4 WRC nog betrouwbaarder zijn en langer mee te gaan, zoals bijvoorbeeld de motor, de versnellingsbak, de differentiële vooraan, in het midden en achteraan, de schokdempers...

Het testvoertuig werd gebruikt om de technologie te testen en om runs uit te zetten en was niet gestickerd.

Longitud	4,27 m
Anchura	1,80 m
Altura	1.40 m
Motor	Tipo: XU7JP4 de 4 cilindros en línea, 16 válvulas, refrigerado por líquido Disposición: instalación frontal en sentido transversal, inclinado a 25° hacia el escape
Cilindrada	1.998 cm ³
Potencia	315 CV DIN a 5.500 rpm
Peso en vacío	1.230 kg

Lunghezza	4,27 m
Larghezza	1,80 m
Altezza	1.40 m
Motore	Tipo: XU7JP4 Straight 4, 4 cilindri, 16 valvole, raffreddamento a liquido Disposizione: anteriore, trasversale inclinata di 25° verso lo scarico
Cilindrata	1.998 cm ³
Potenza	315 CV DIN a 5.500 giri/mn
Peso a vuoto	1.230 kg

Lengte	4,27 m
Breedte	1,80 m
Hoogte	1.40 m
Motor	Type: XU7JP4 Straight 4, 4 cilinders, 16 kleppen, vloeistofgekoeld Opstelling: vooraan, overdwars gemonteerd, overhellend tegen 25° richting de uitlaat
Cilinderinhoud	1.998 cm ³
Vermogen	315 DIN PK aan 5.500 tr/mn
Tarra gewicht	1.230 kg

2

Numéro de phase
Step number
Schrittnummer
Número de fase

56

Référence de couleur
Colour reference no
Farbangabe
Referencia de color

37

Numéro de pièce
Part number
Teilenummer
Número de pieza

6

Numéro de decal
Decal number
Abziehbildnummer
Número de calcomanía

11 Argent métallique
Silver Metallic
Silber metallisch

16 Or métallique
Gold Metallic
Gold metallisch

19 Rouge vif brillant
Crimson Gloss
Bordeauxrot glänzend

22 Blanc brillant
White Gloss
Weiß glänzend

27 Gris mer mat
Sea Grey Matt
Seegrau matt

33 Noir mat
Black Matt
Schwarz matt

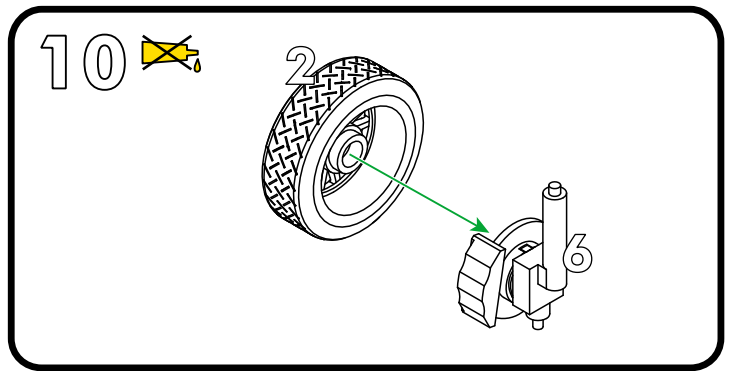
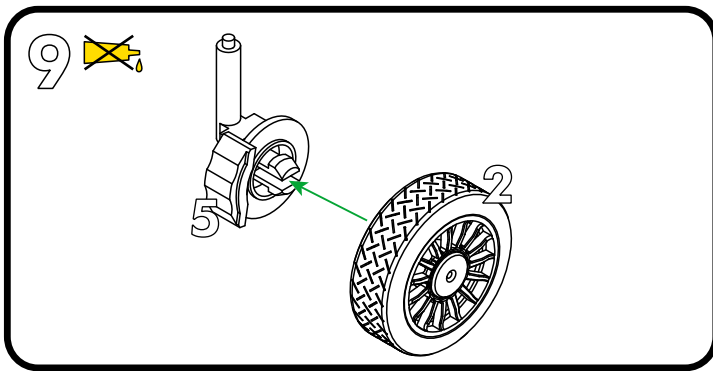
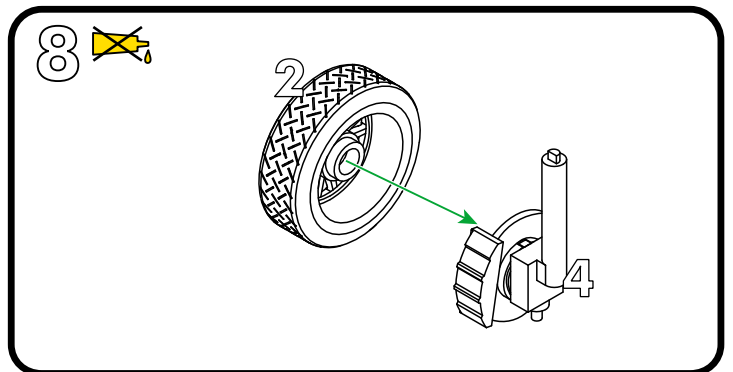
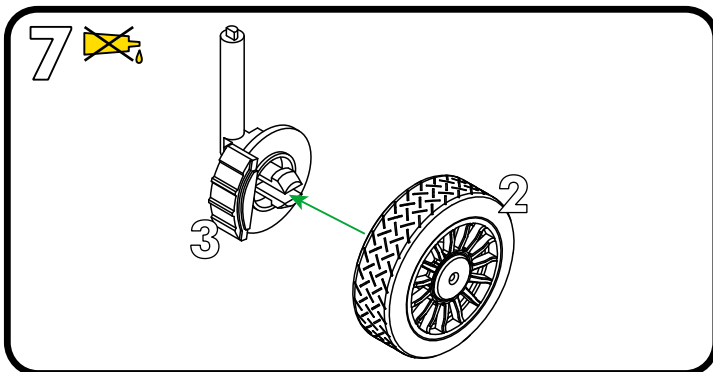
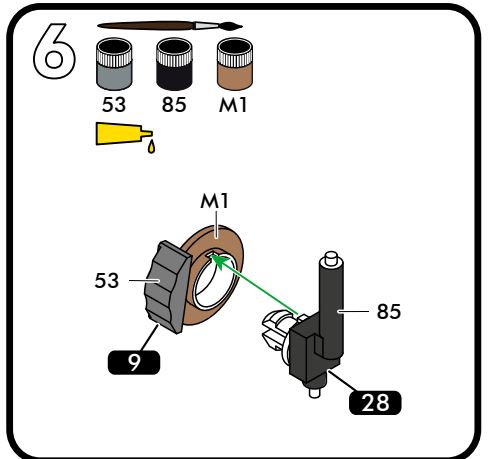
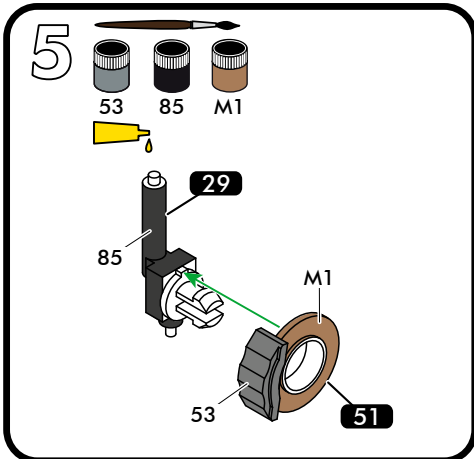
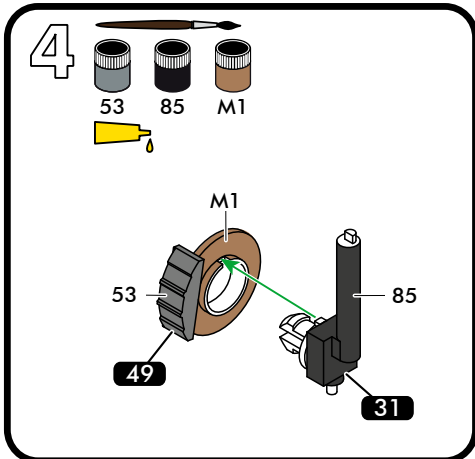
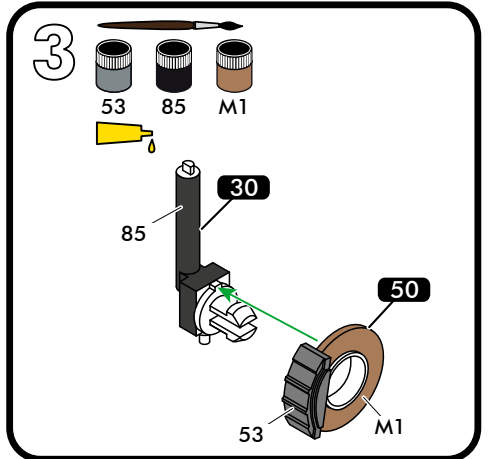
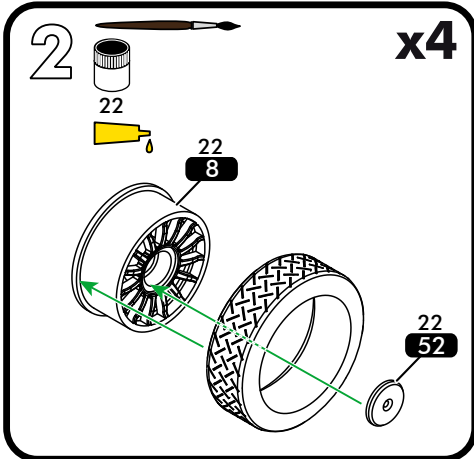
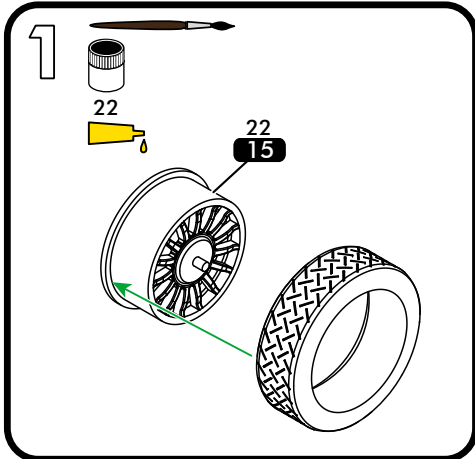
53 Gris métallique
Gunmetal Metallic
Grau metallisch

85 Noir de charbon satine
Coal Black Satin
Kohlenschwarz seidenmatt

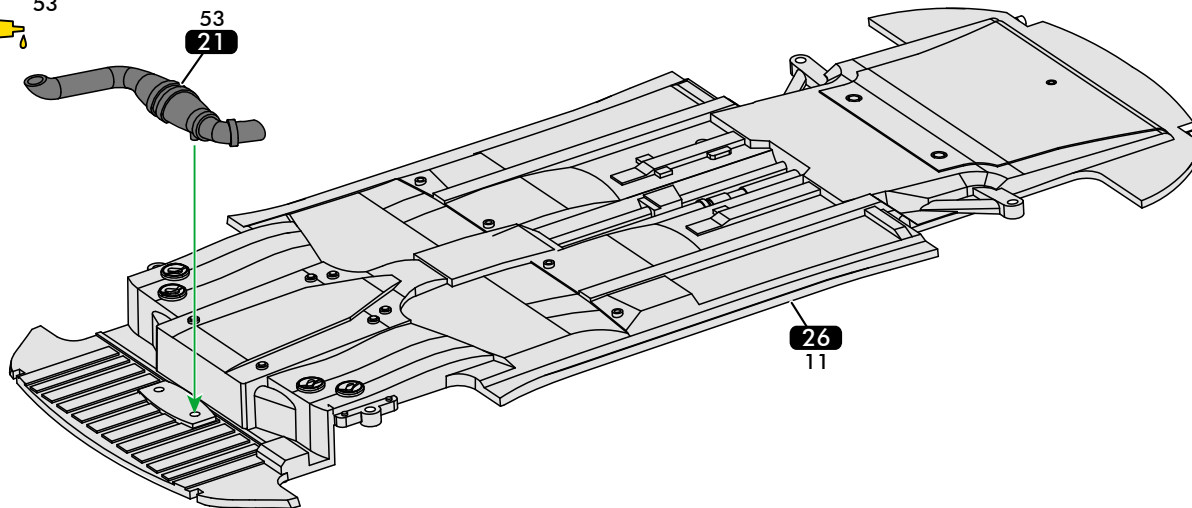
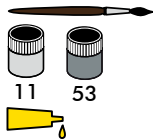
321 Rouge transparent
Red Transparent
Rot transparent

322 Orange transparent
Orange Transparent
Orange transparent

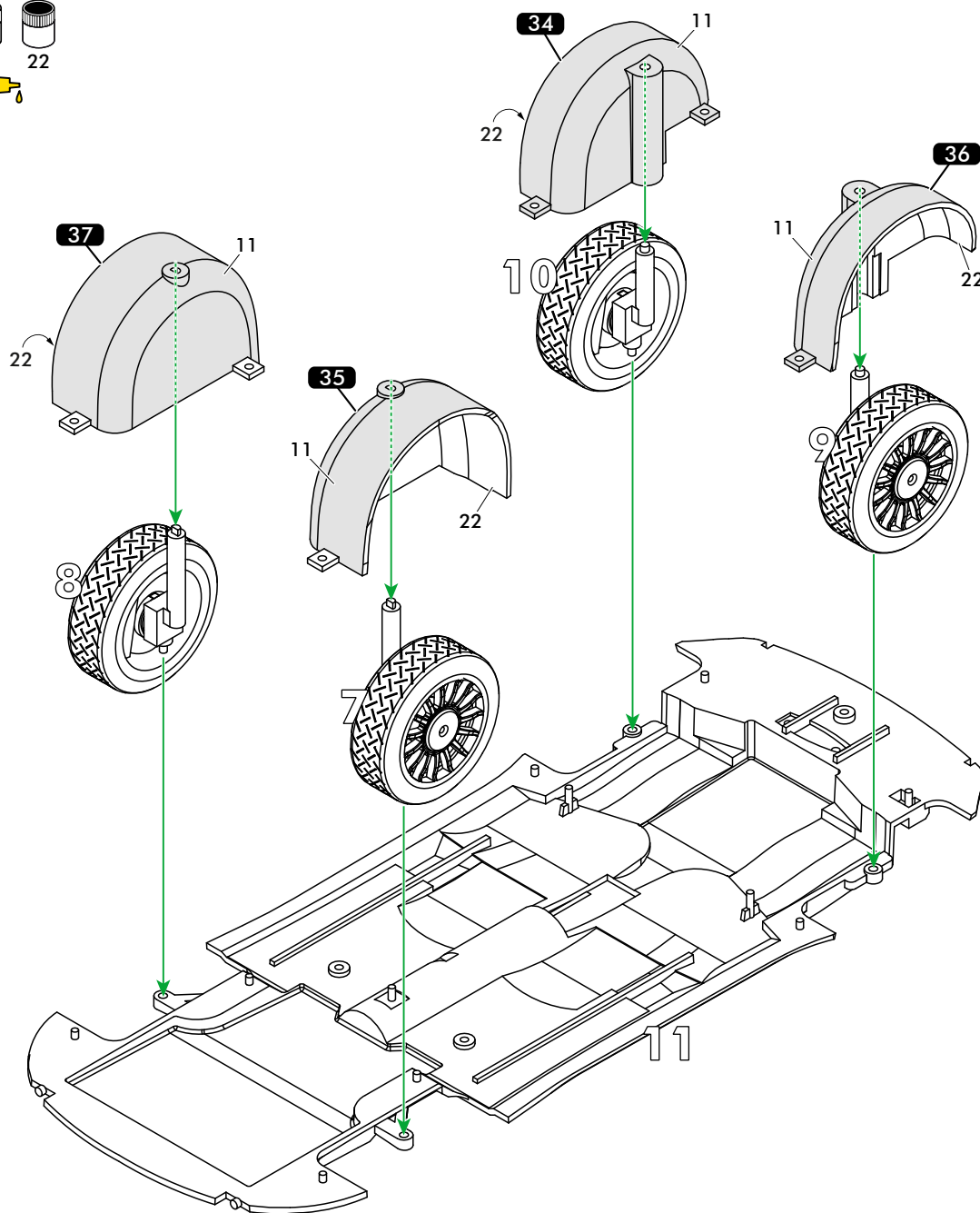
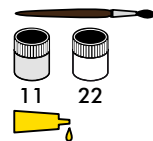
M1
16 + 53



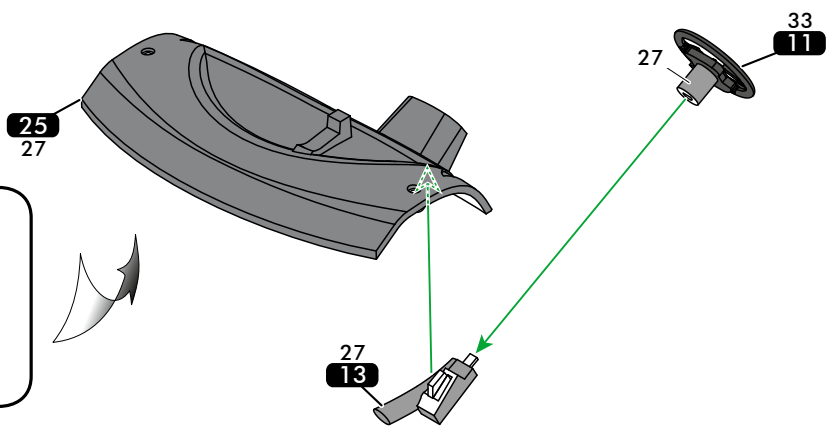
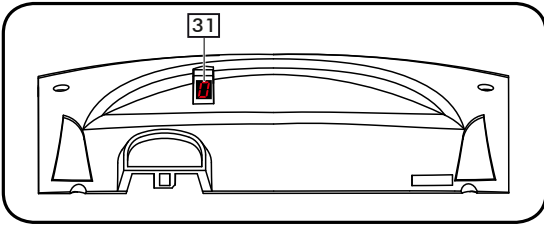
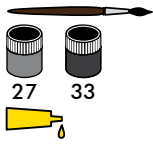
11



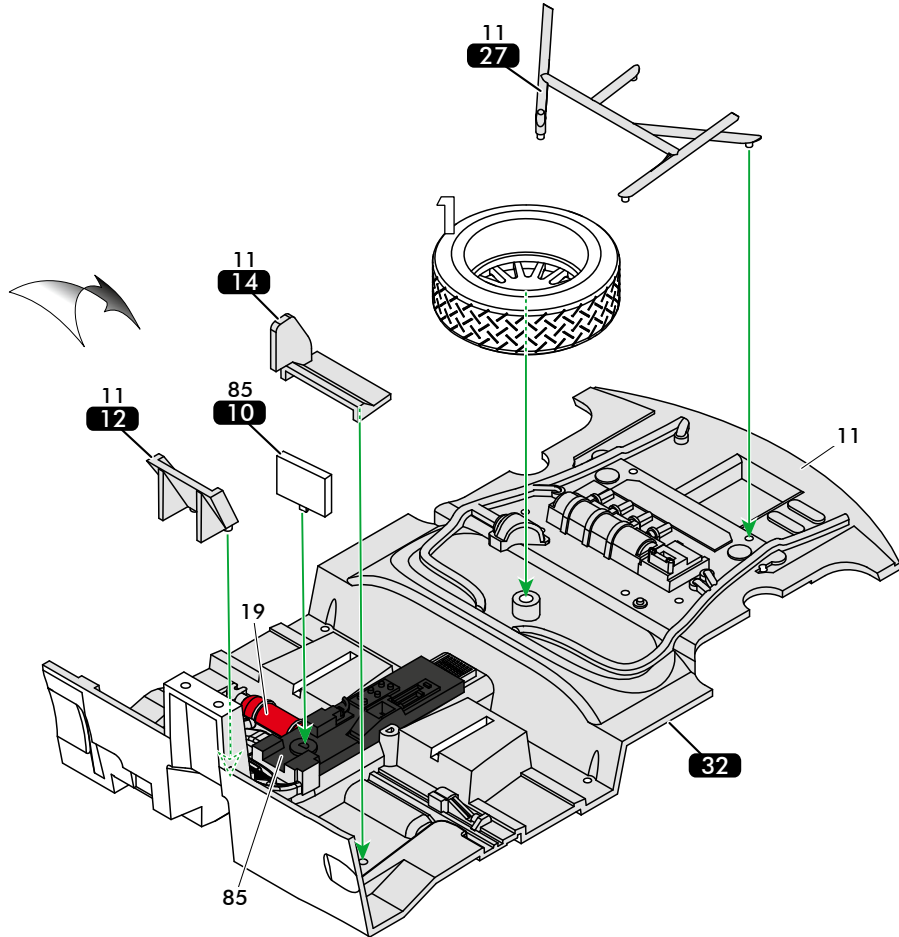
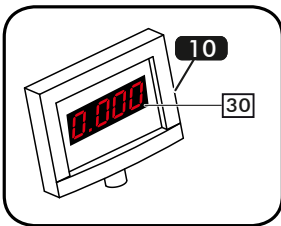
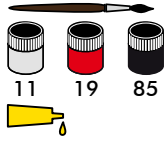
12



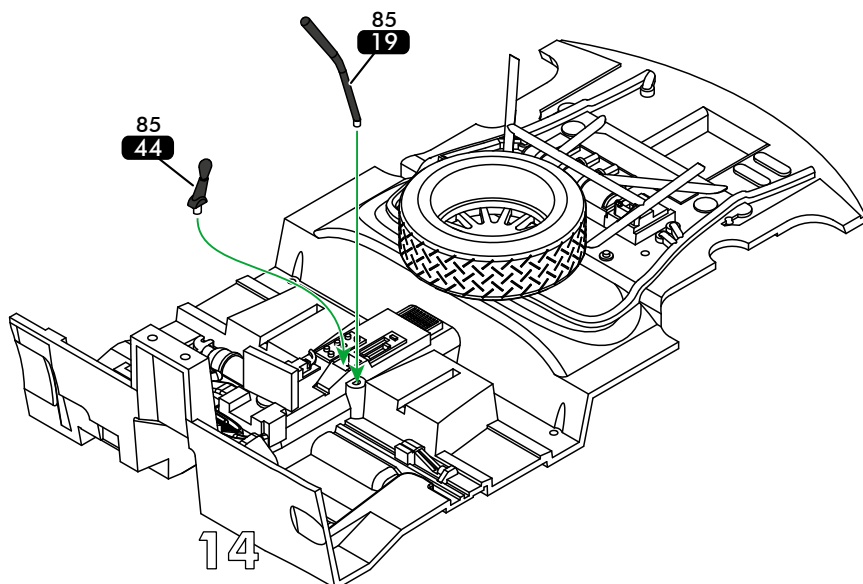
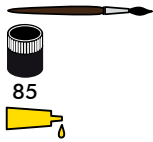
13



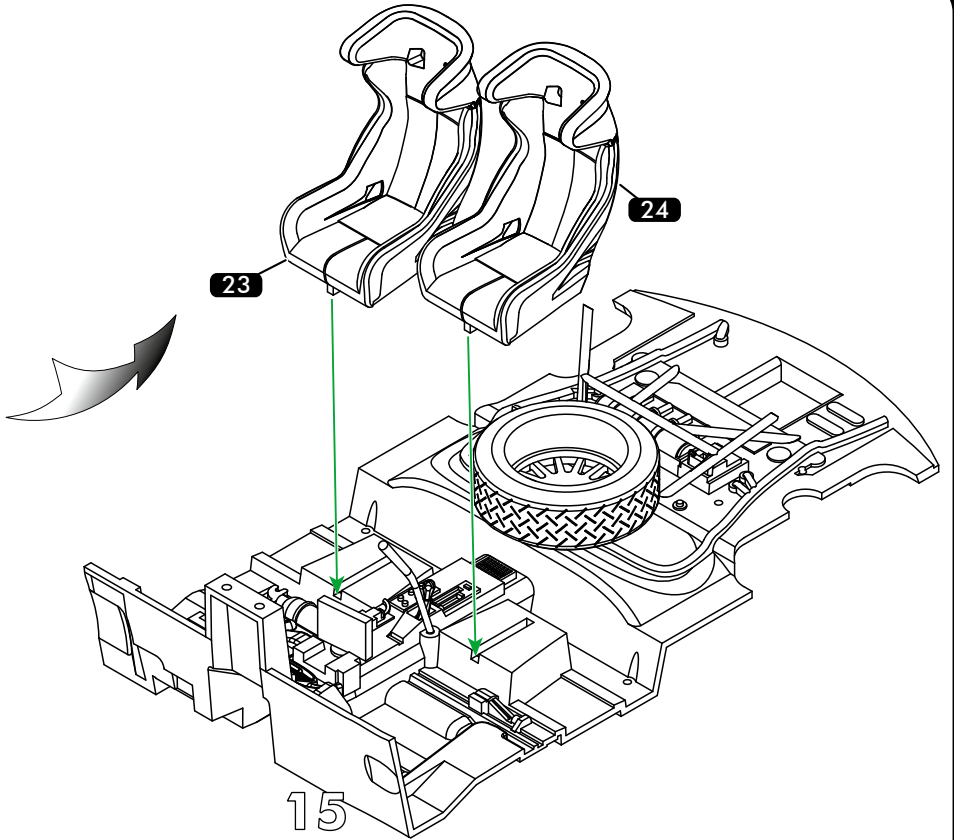
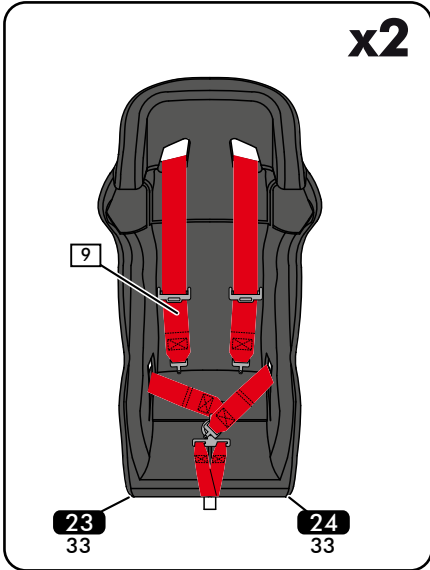
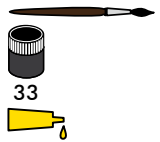
14



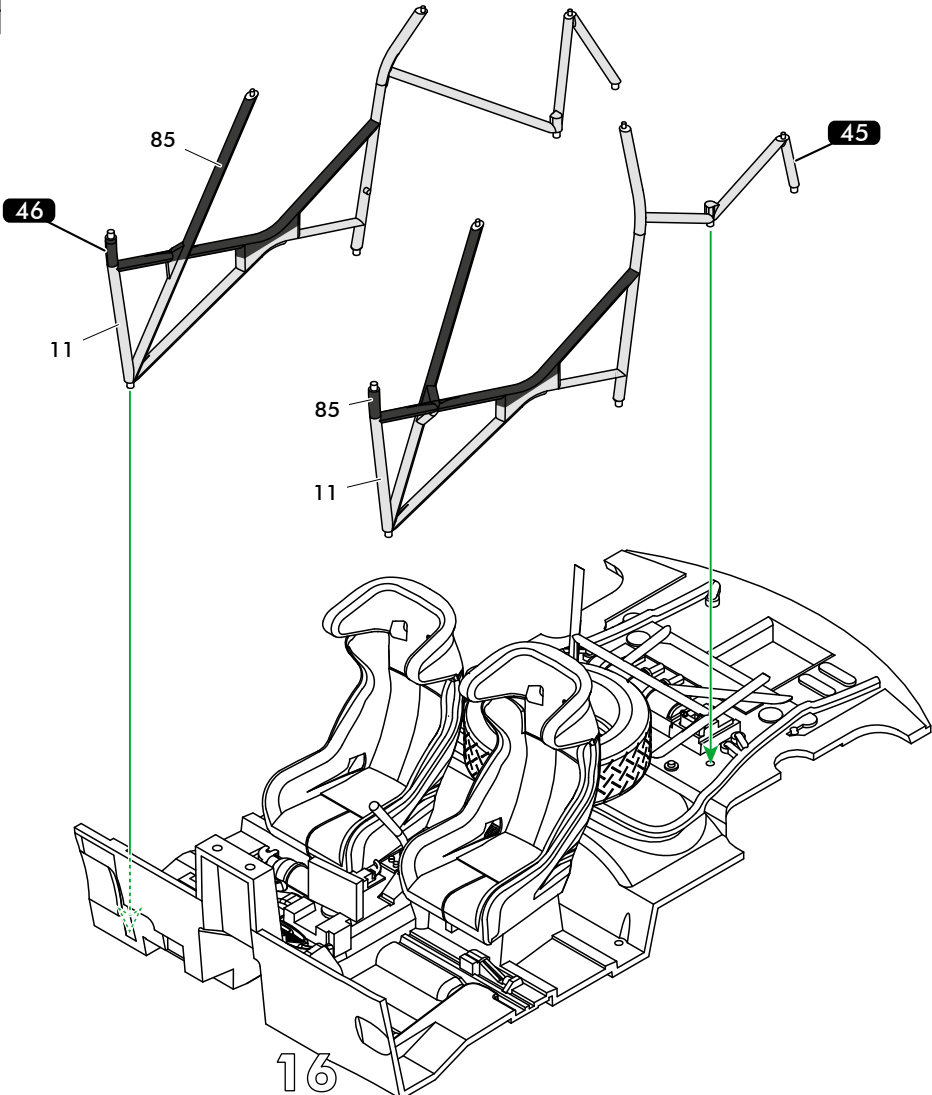
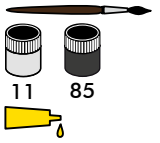
15




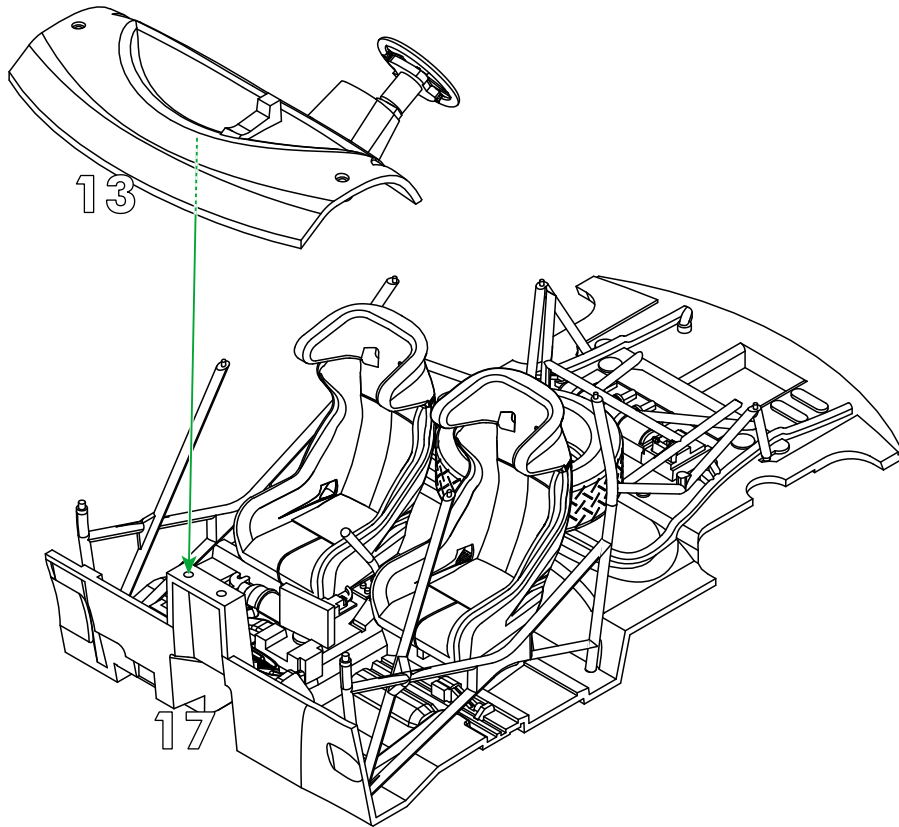
16






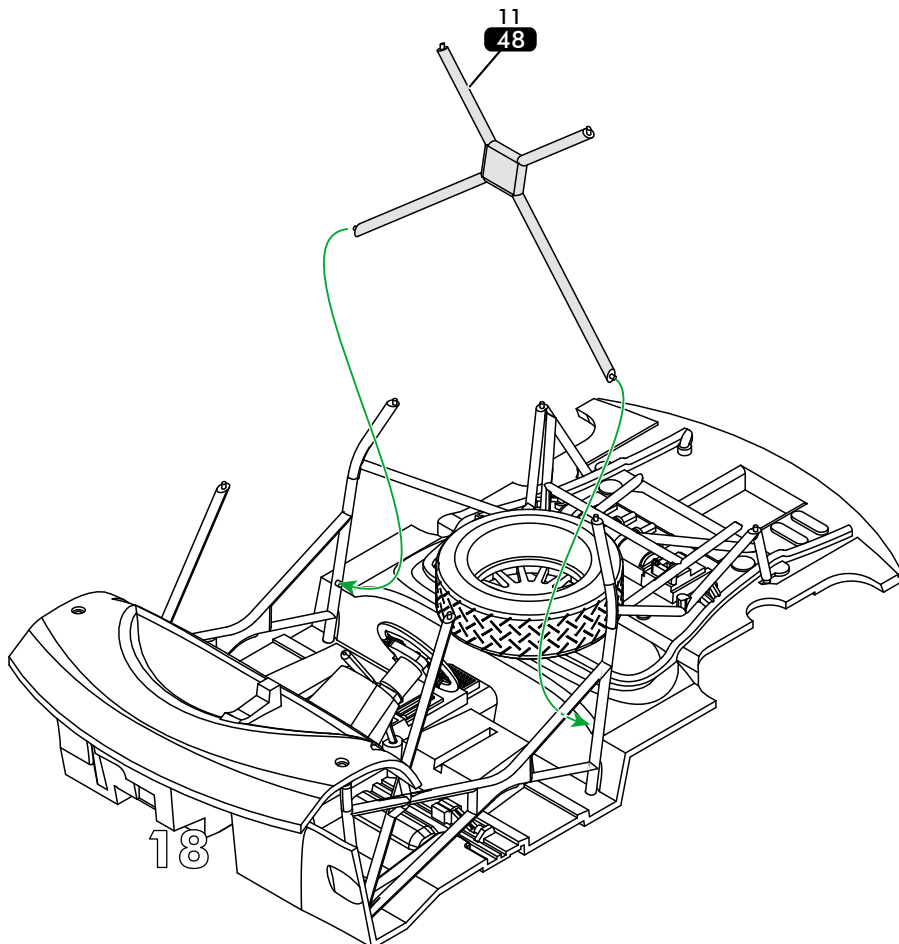
17



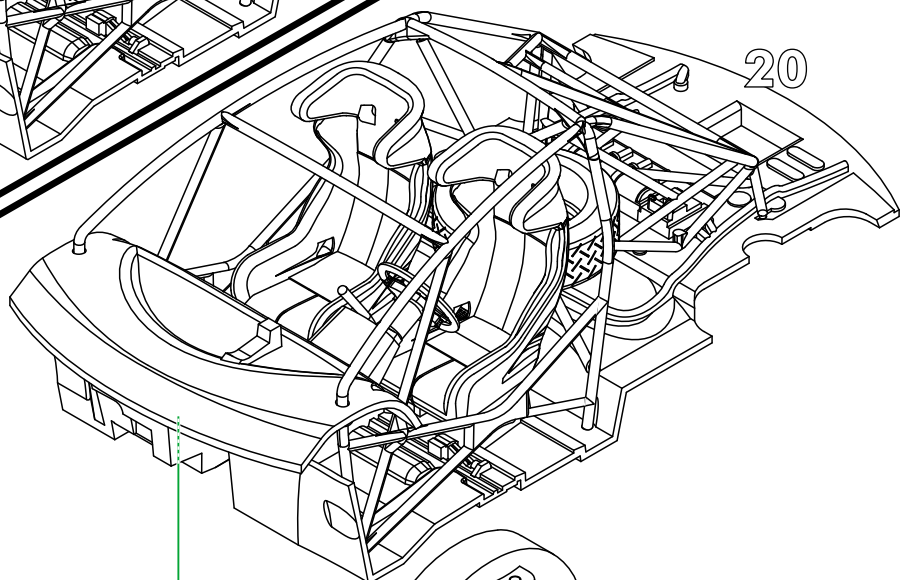
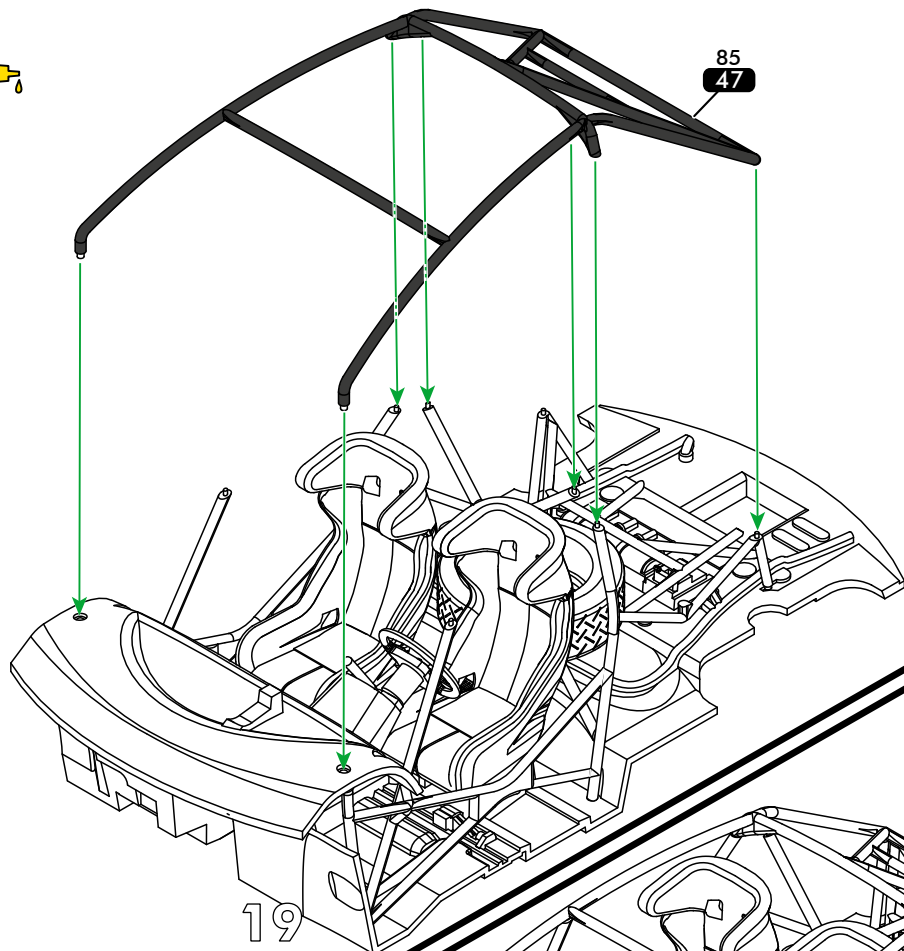
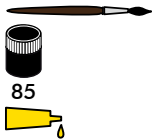
18 



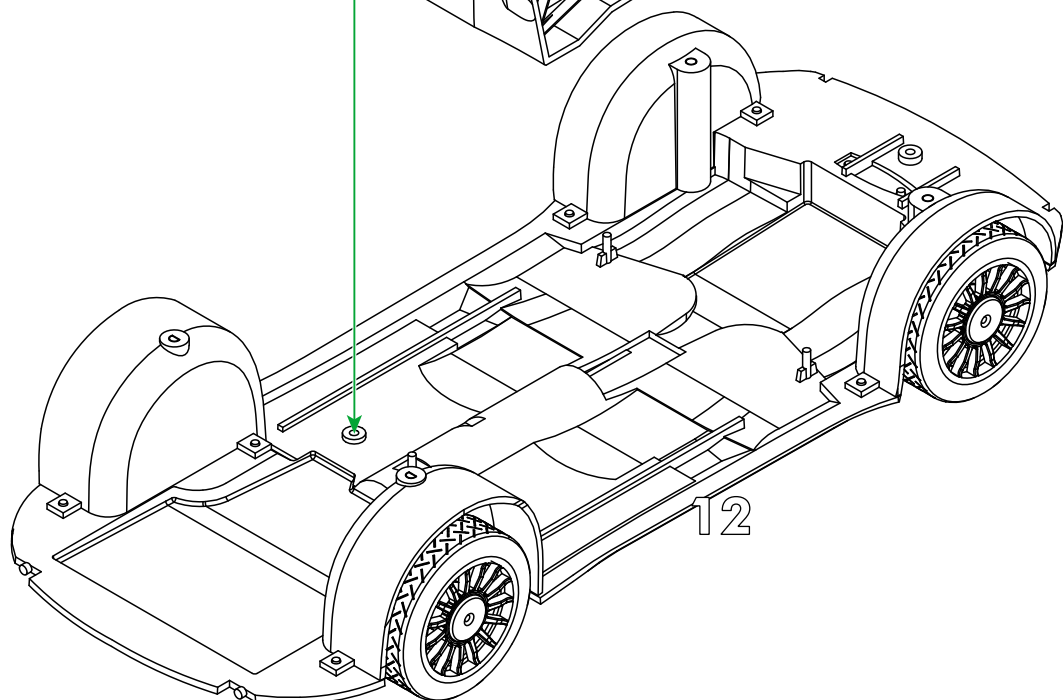
19 





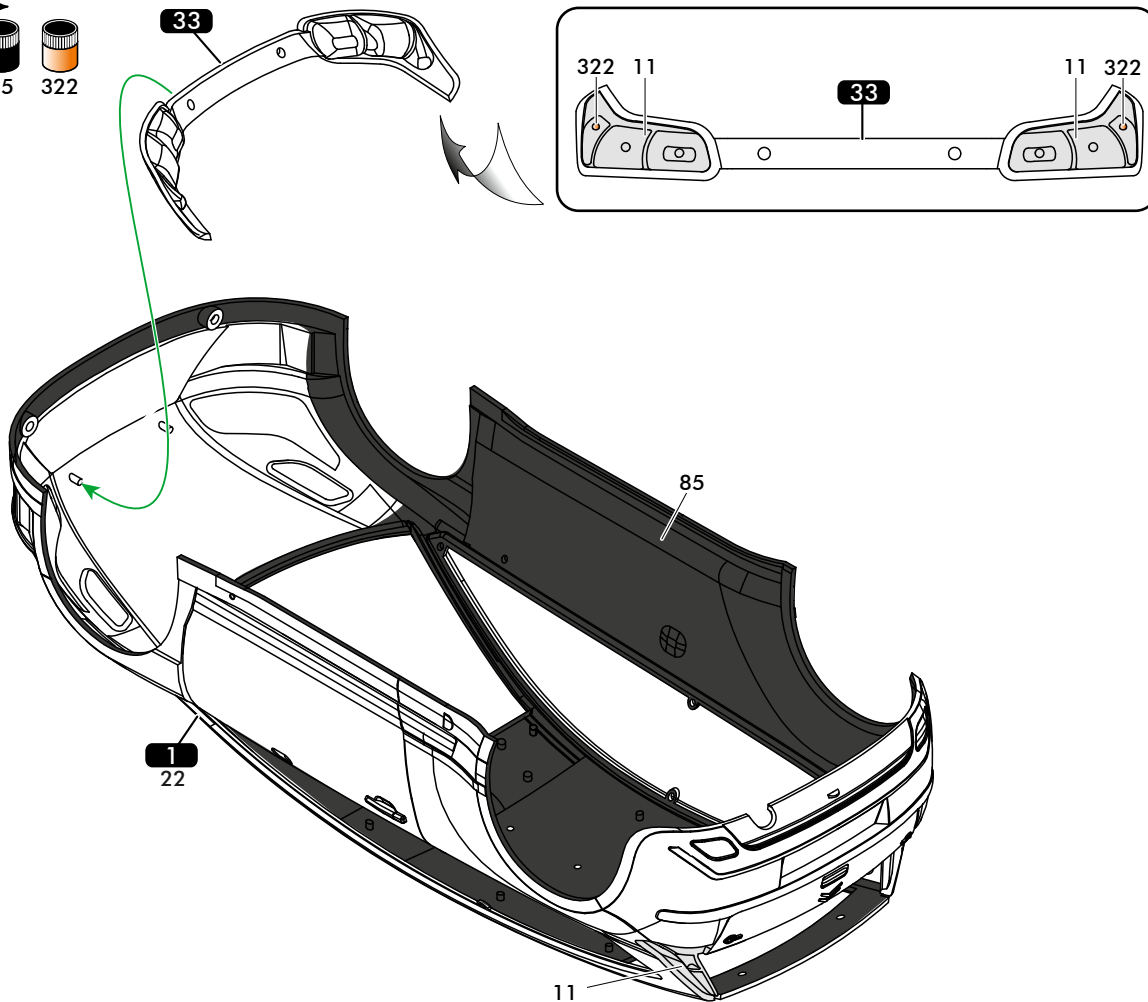
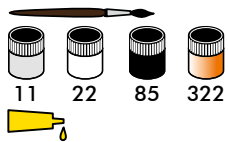
20



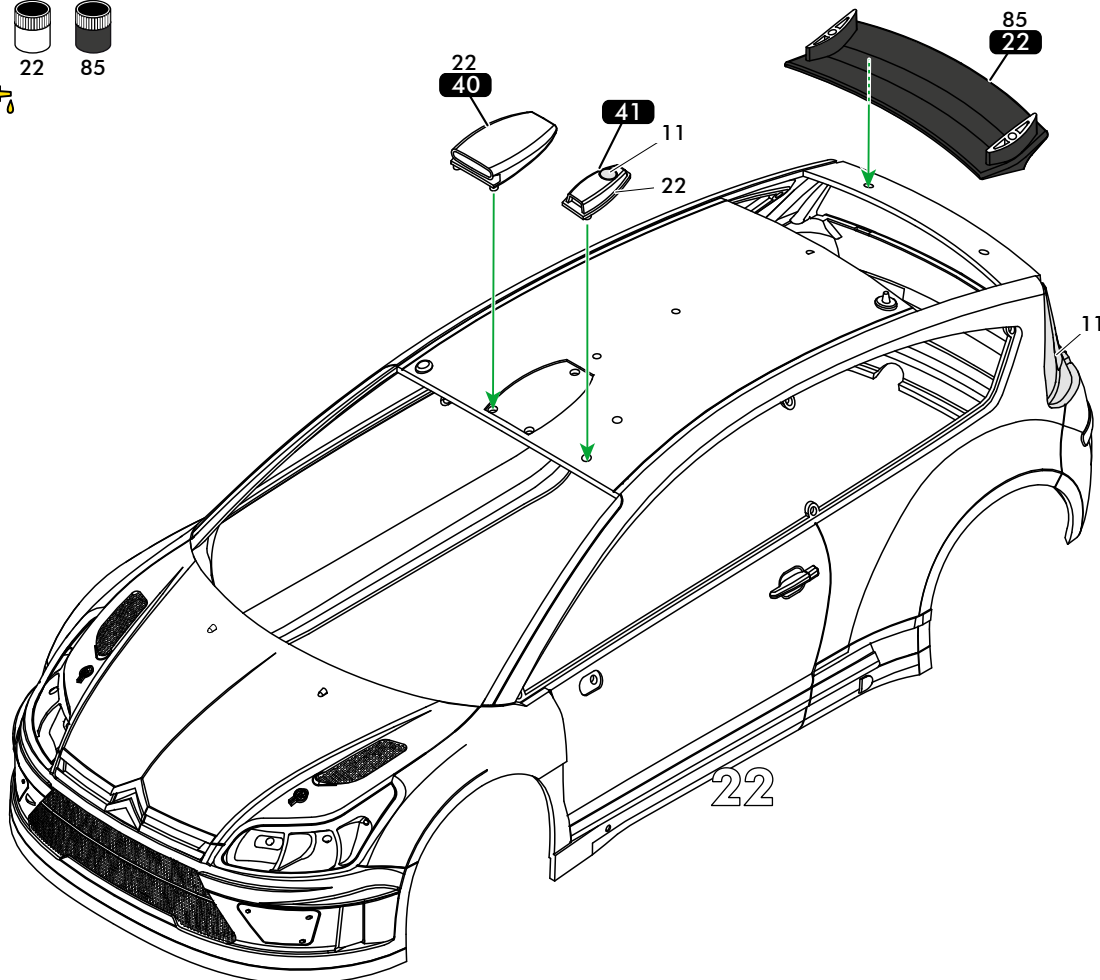
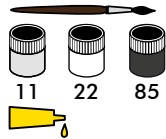
21



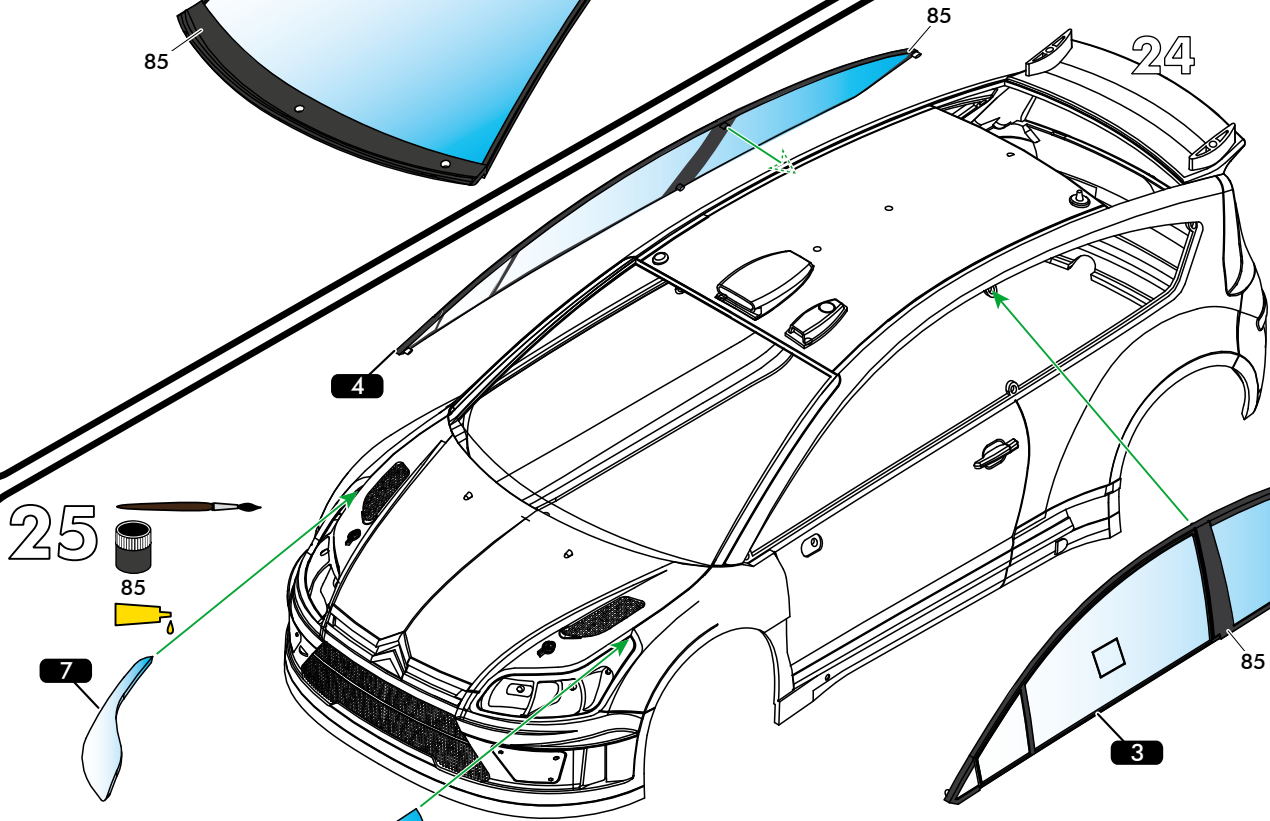
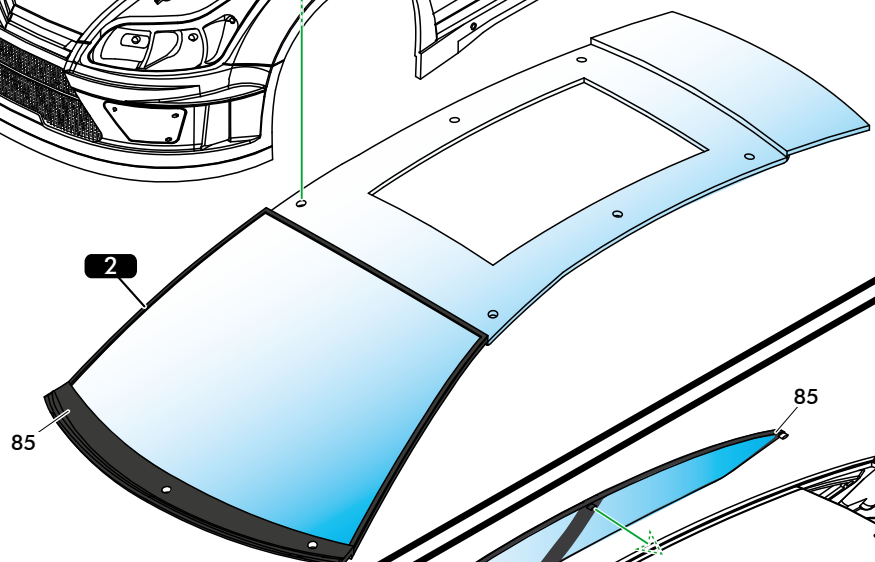
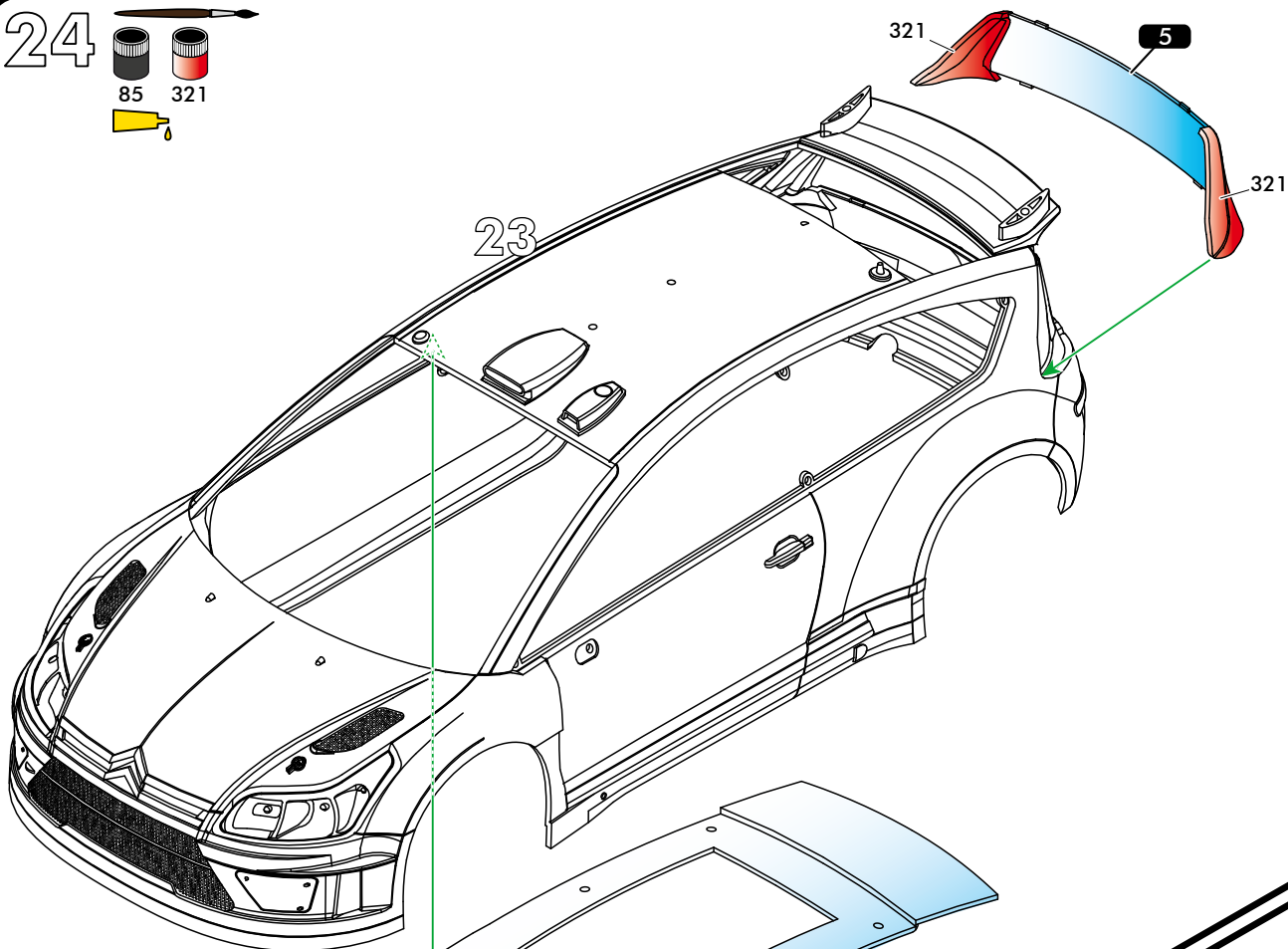
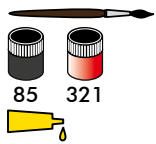
22



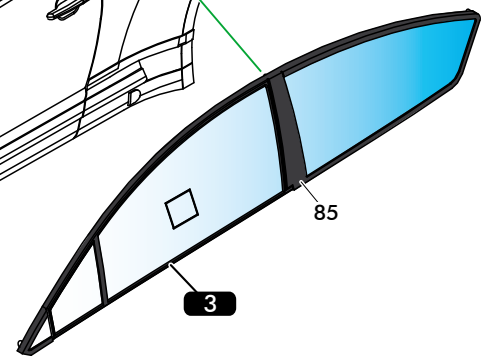
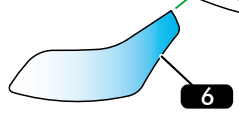
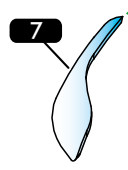
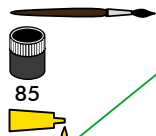
23



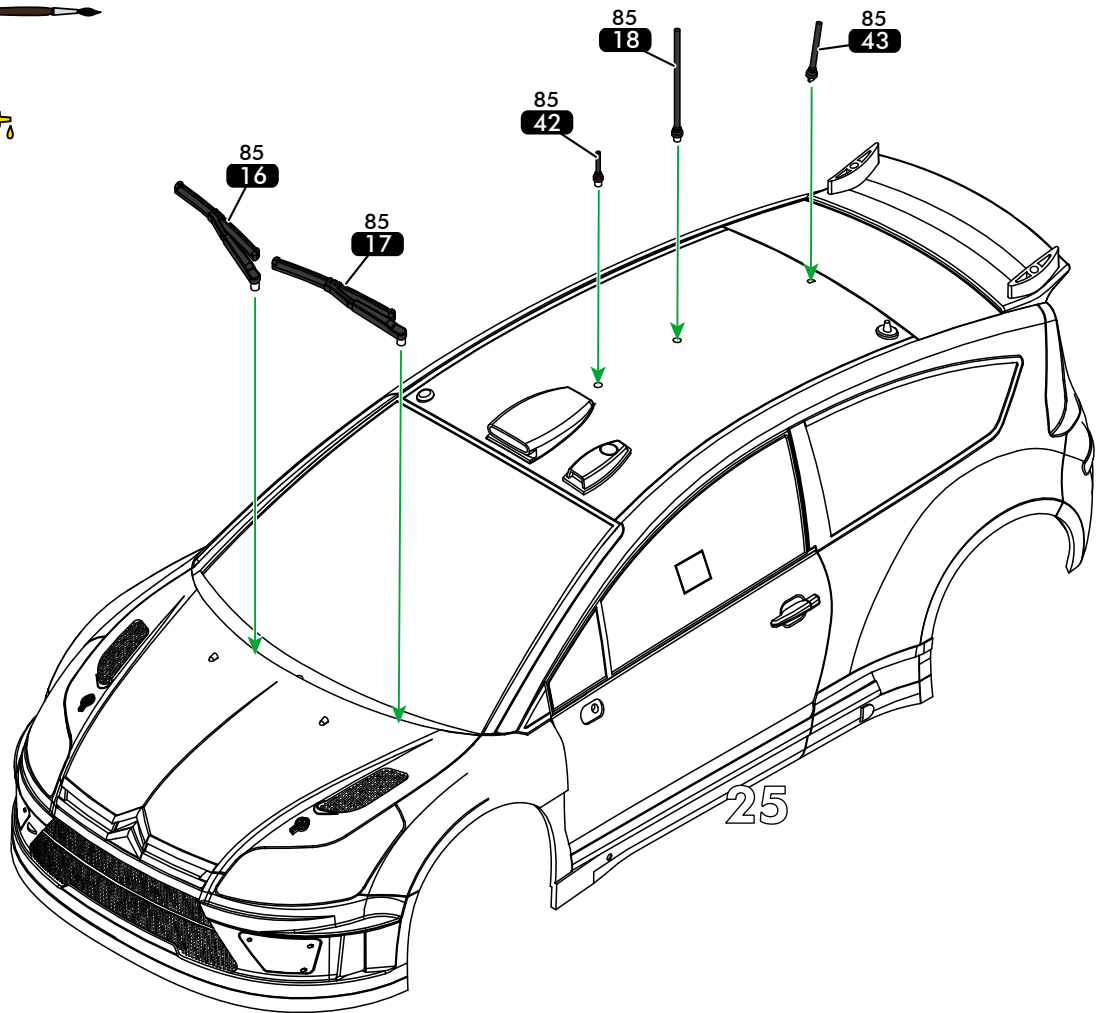
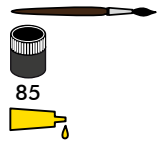
24



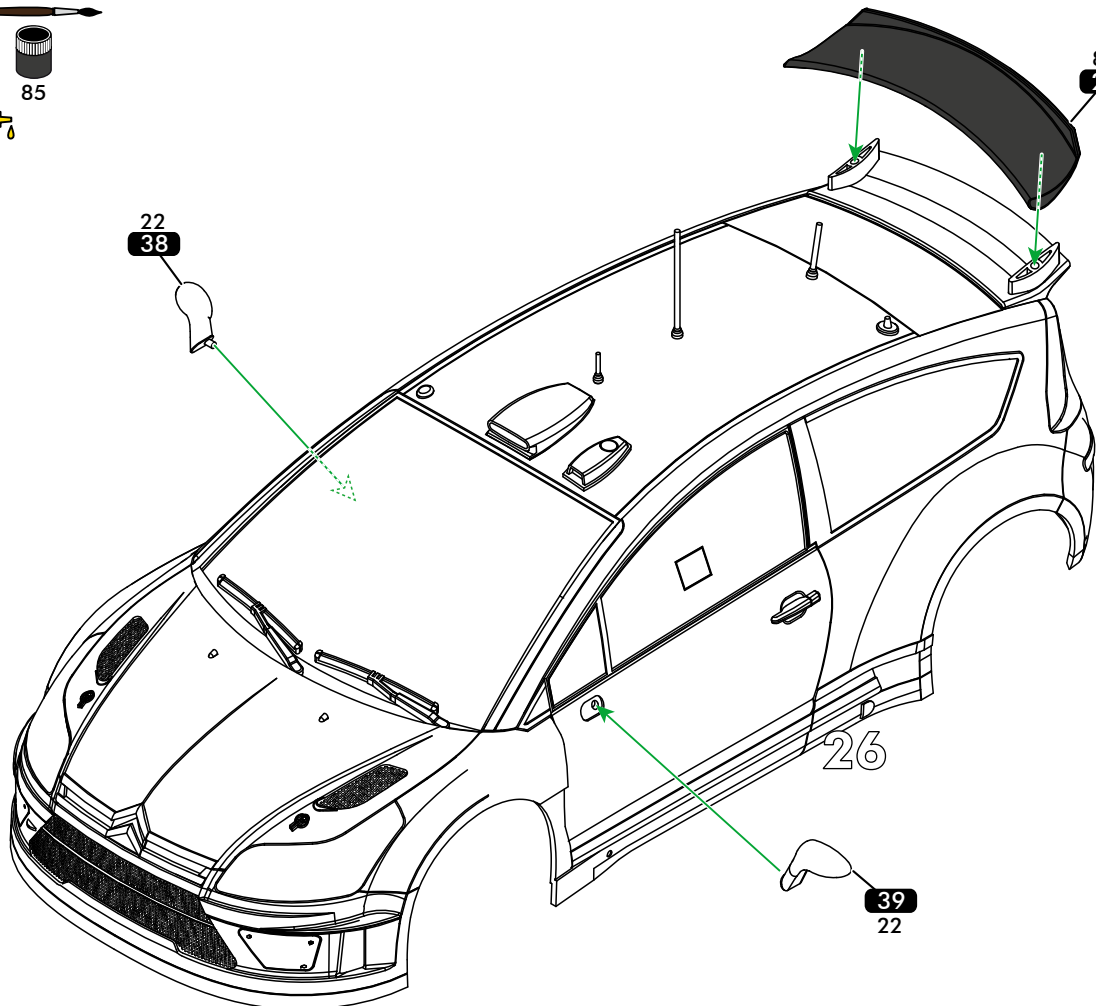
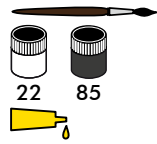
25

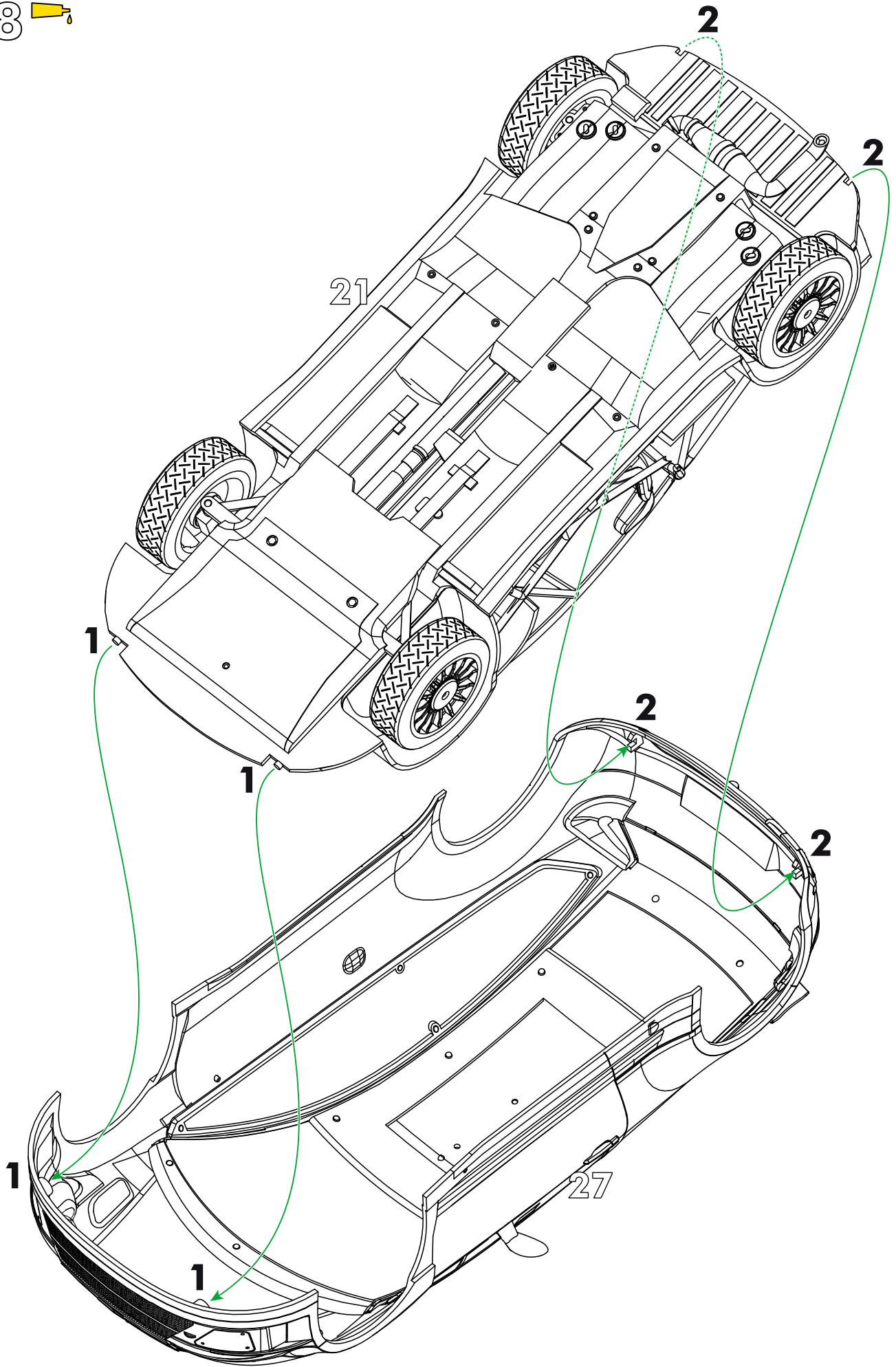


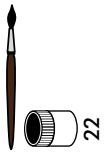
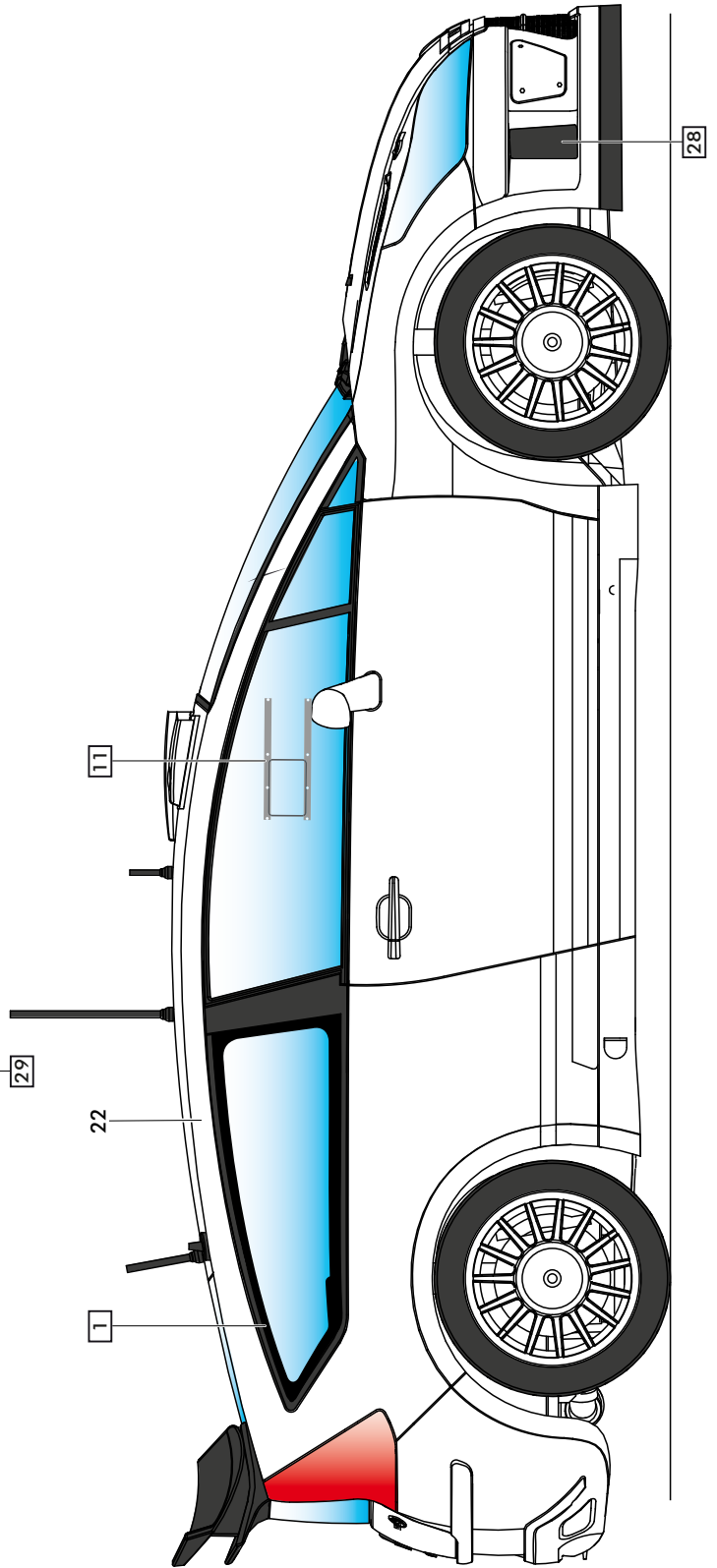
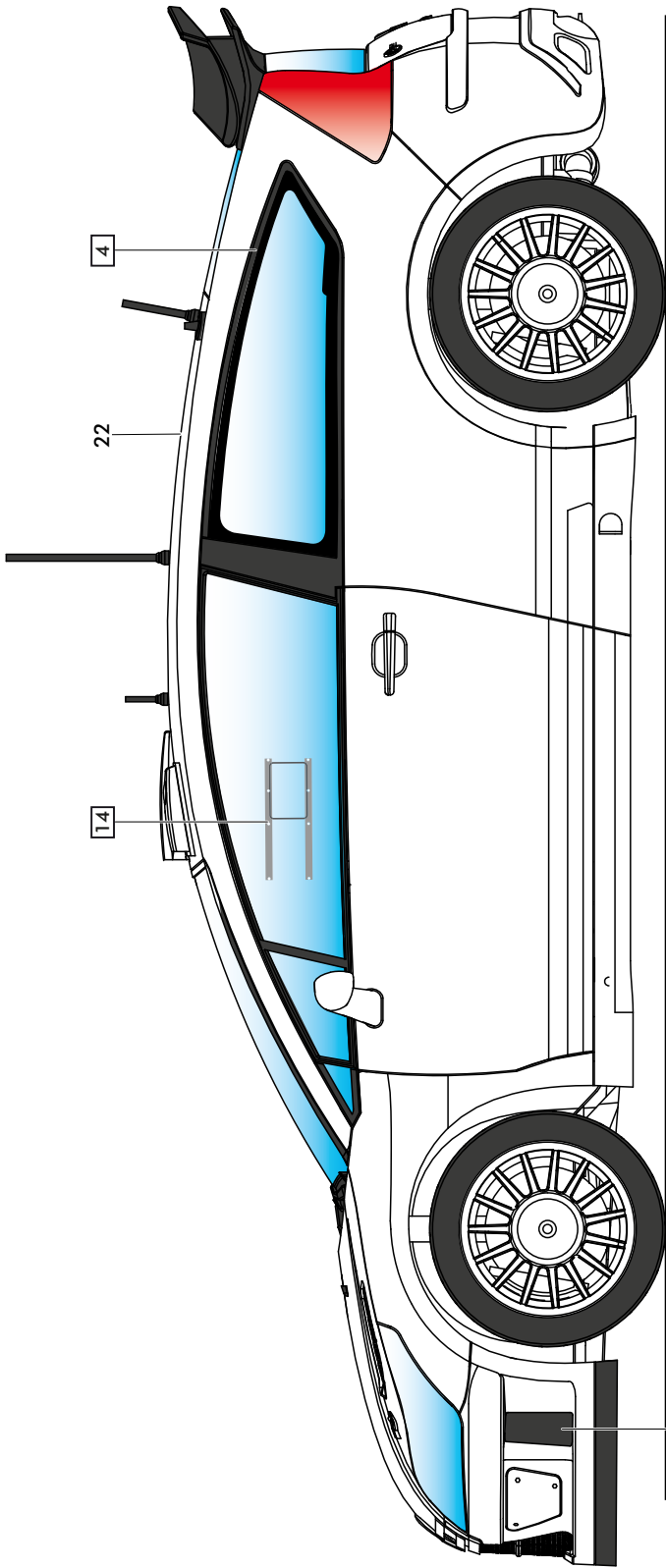
26



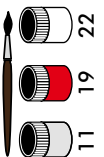
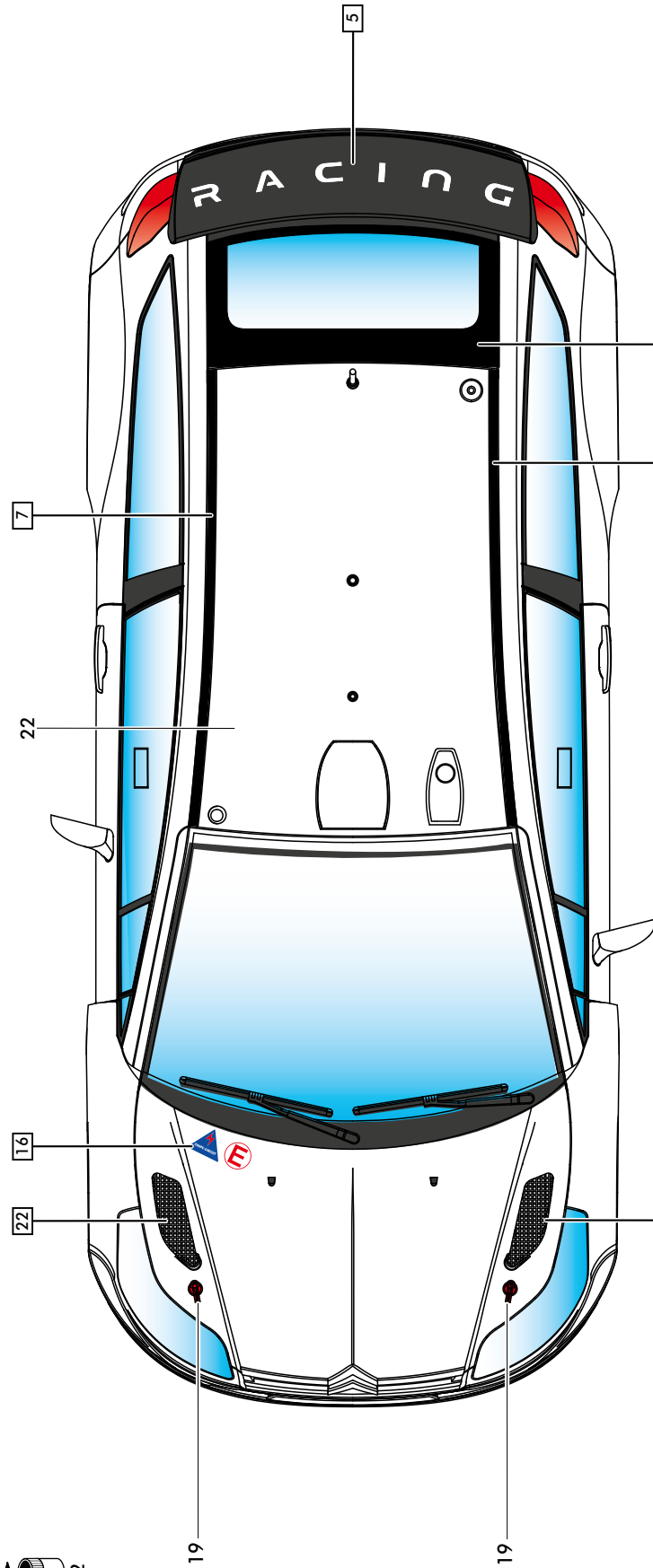
27



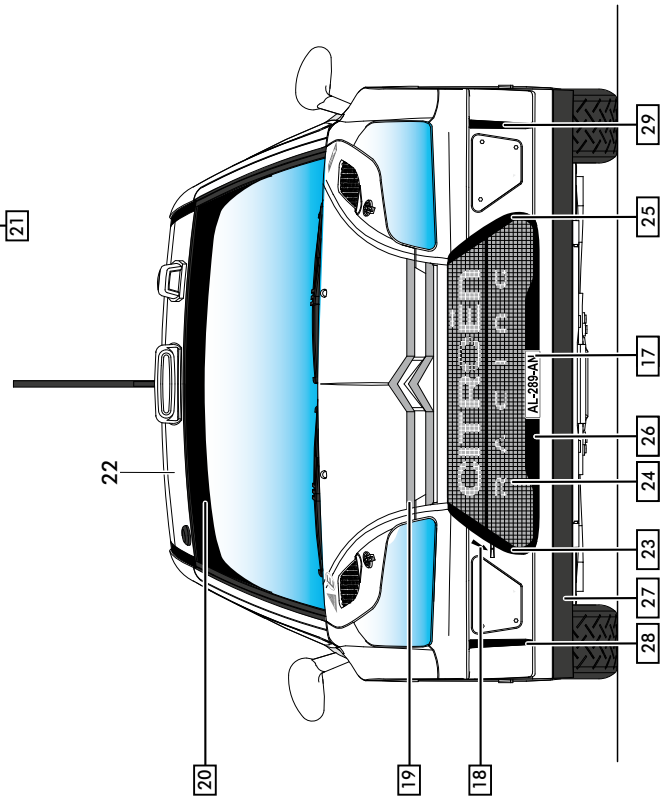
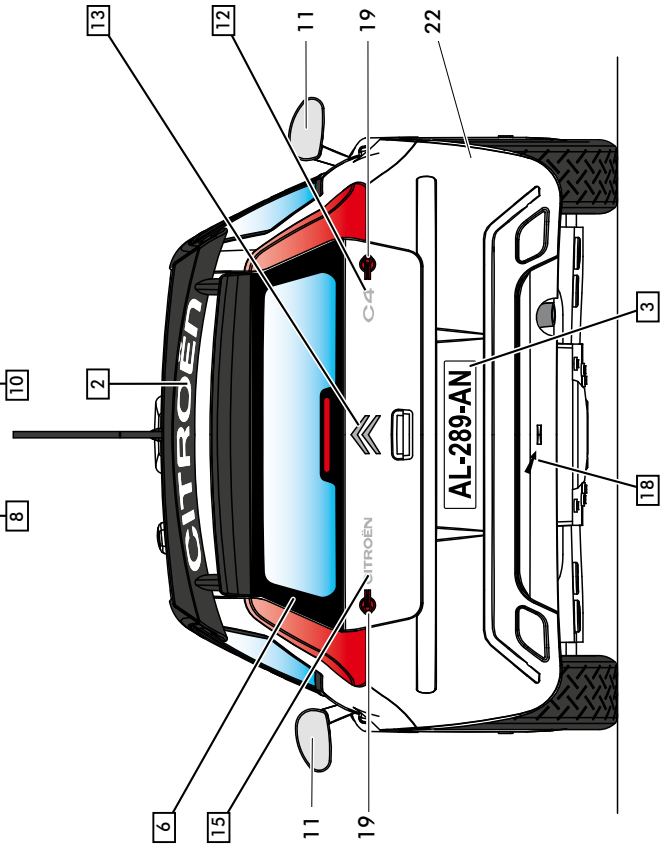




29



30



VISITEZ NOTRE SITE WEB ET NOTRE BOUTIQUE EN LIGNE !

VISIT OUR WEBSITE AND ONLINESHOP!

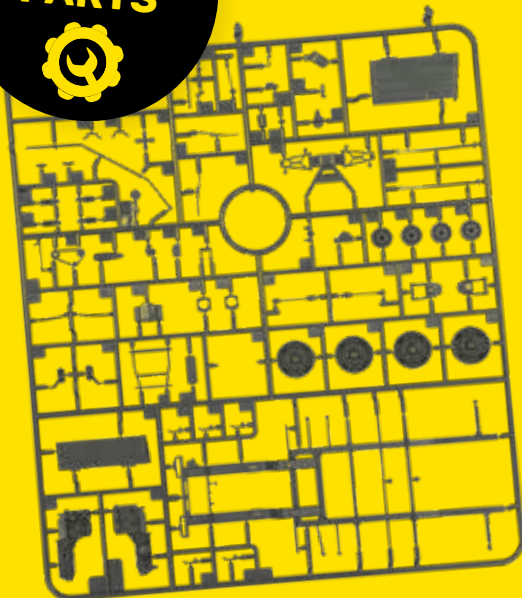
BESUCHE UNSERE WEBSITE UND ONLINESHOP!



**DOWNLOAD
INSTRUCTIONS**



**ORDER
SPARE
PARTS**



**SHOP
ONLINE**



V-160125

Heller Hobby GmbH | Erlenbacher Str. 3 | 42477 Radevormwald | Germany

+49 (0) 2195-92773-0 | www.heller.fr | info@heller.fr

[instagram.com/heller.fr](https://www.instagram.com/heller.fr) | [facebook.com/heller.fr](https://www.facebook.com/heller.fr)