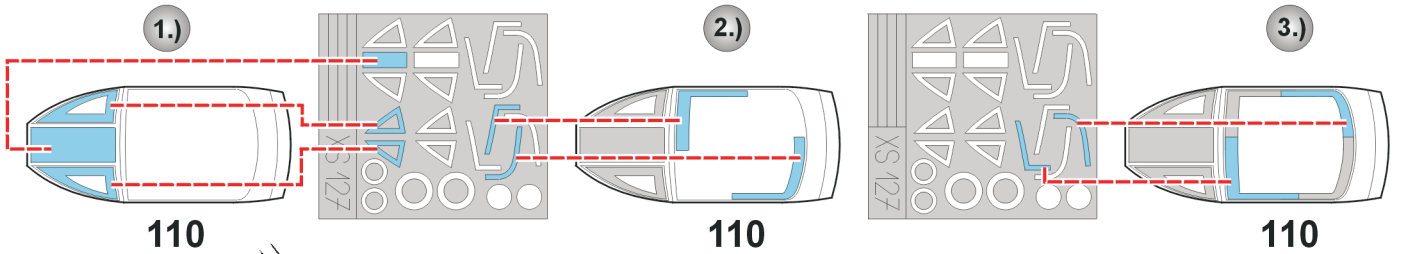
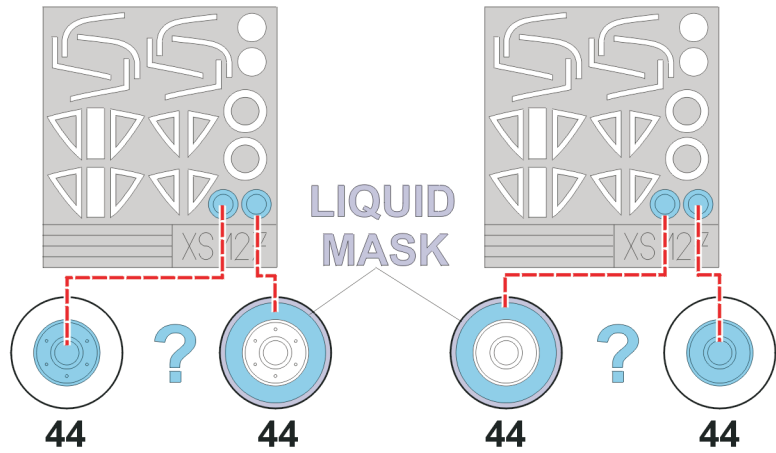
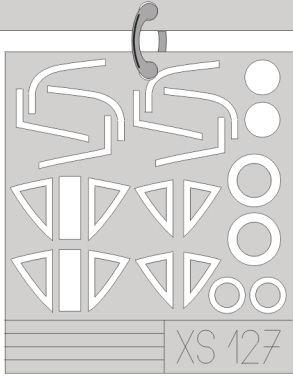


eduard
Express Mask

XS 127

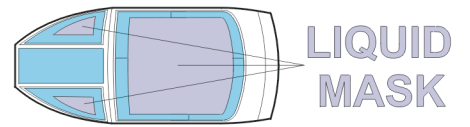
A-4M Skyhawk

The die-cut mask for accurate canopy frame painting of the
Fujimi 1/72 KIT

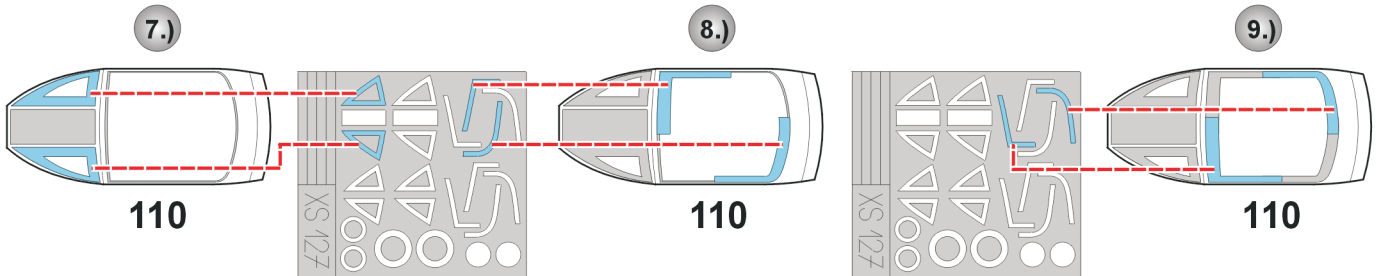
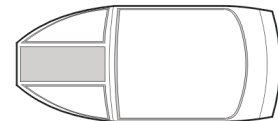


4.) INTERIOR COLOR

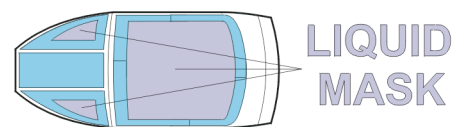
5.) RUBBER COLOR



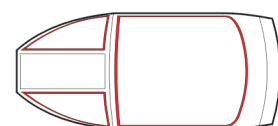
6.) REMOVE MASK

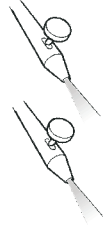
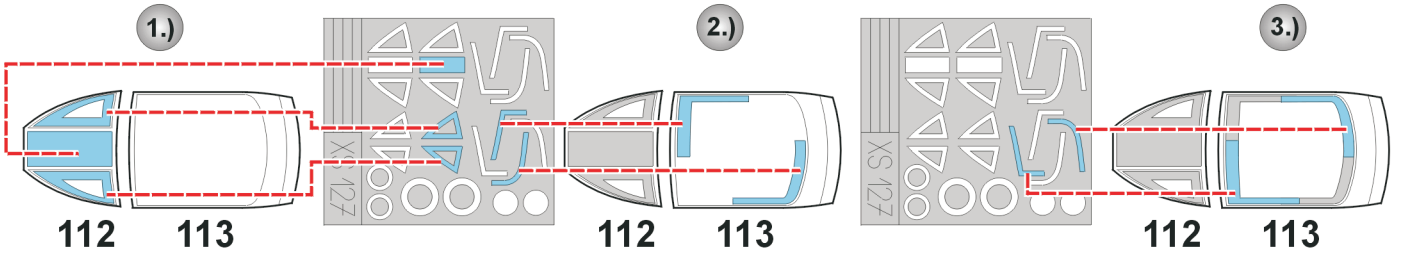


10.) CAMOUFLAGE COLOR



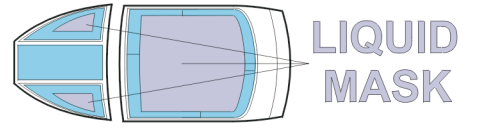
11.) REMOVE MASK





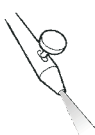
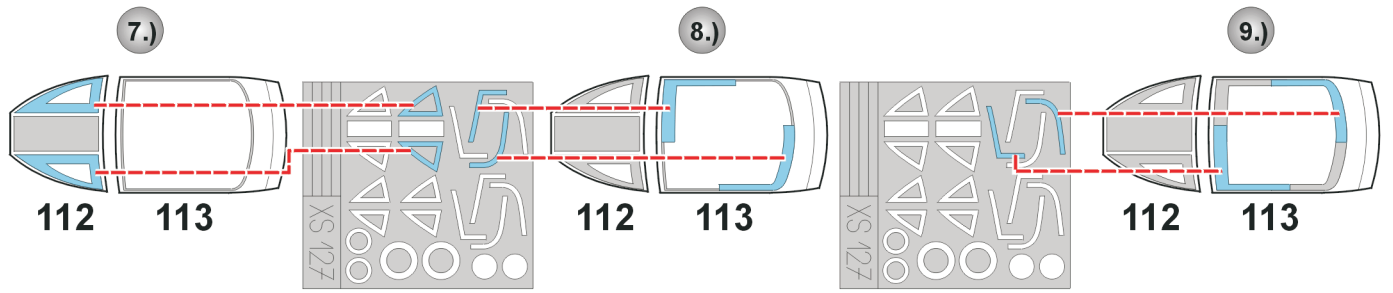
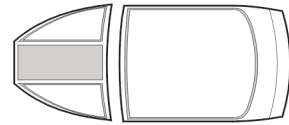
4.) INTERIOR COLOR

5.) RUBBER COLOR

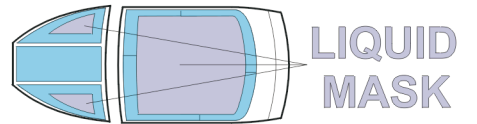


LIQUID MASK

6.) REMOVE MASK

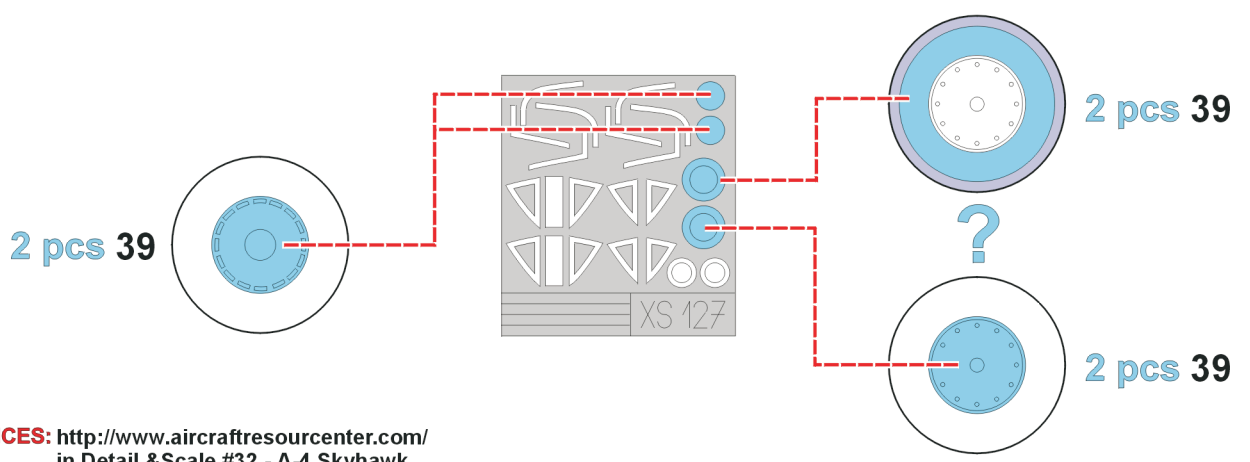
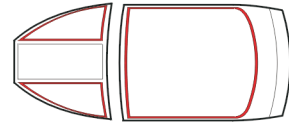


10.) CAMOUFLAGE COLOR



LIQUID MASK

11.) REMOVE MASK



REFERENCES: <http://www.aircraftresourcenter.com/>
 in Detail & Scale #32 - A-4 Skyhawk
 Aeroguide #14 Skyhawk