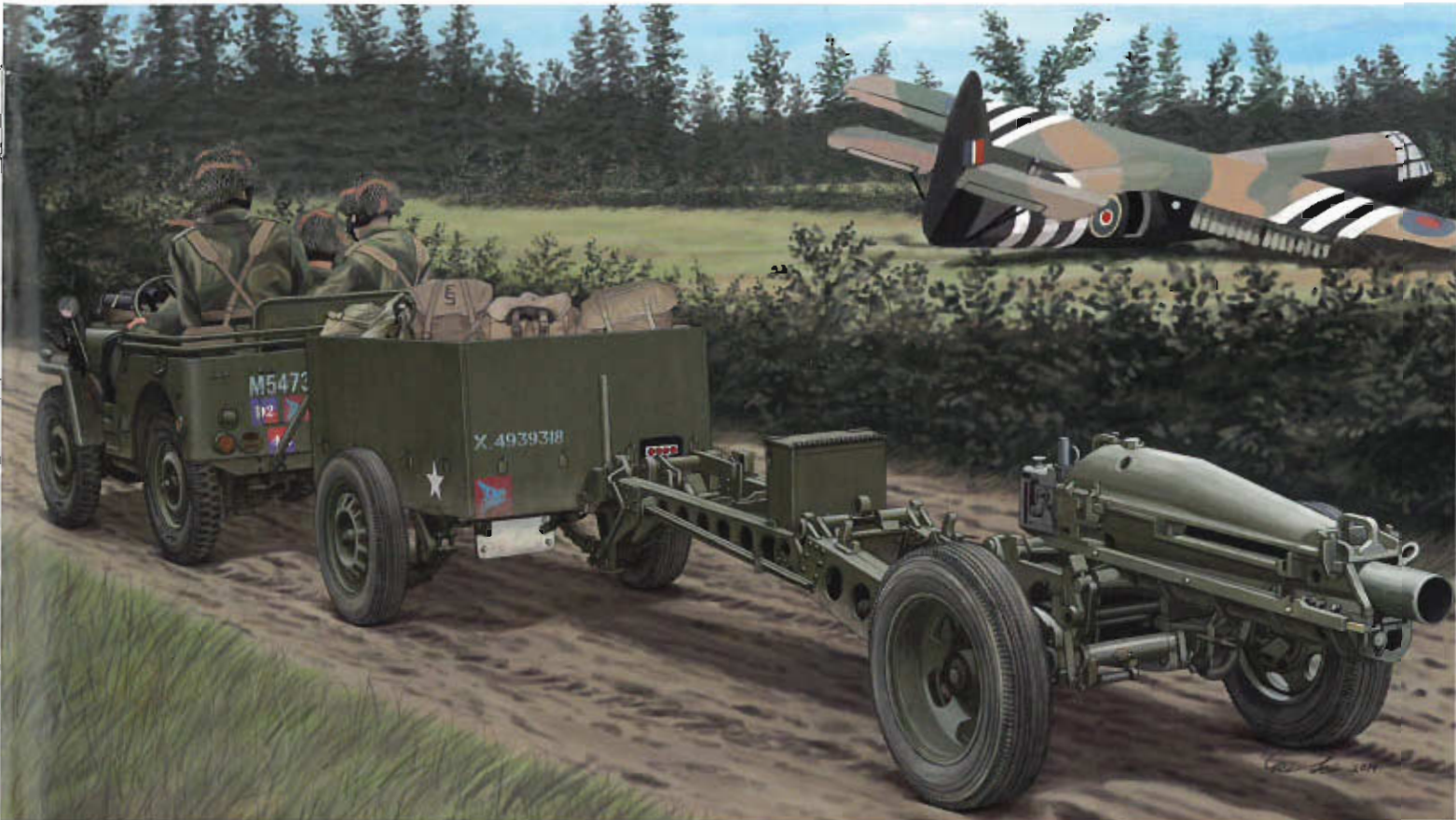




Kit No.CB-35163

British Airborne 75mm Pack Howitzer & 1/4 Ton Truck w/Trailer **1/35 SCALE**

Bronco Models 二战英伞兵部队用75毫米榴弹炮与1/4吨多功能车辆及拖挂车



The M1 75mm Pack Howitzer was developed for the US Army after WWI, as a go-anywhere light artillery piece. It was designed to be broken down into several pieces that could be carried by pack mules. The first weapons were issued in 1927 and had wooden wheels, later versions had improved carriages with metal wheels and pneumatic tires culminating in the M8 carriage used in WWII. The M1A1 made an excellent airborne artillery piece as it could be transported complete in a glider or broken down and dropped by parachute. The British received 826 M1A1 Pack Howitzers most going to airborne units. In British service it was often towed behind a modified Jeep and small trailer which carried ammunition, all being carried in Horsa gliders. The M1A1 75mm Pack Howitzer had a range of 8,790 meters firing a 6.6kg HE shell, it could also fire a HEAT anti-tank round and WP Smoke shells. The M1A1 on M8 box carriage weighed only 653kg, and could be broken down into 9 single parachute loads for air drop. The little gun was so successful that it served with British forces until the early 1960's. 🇬🇧

Information & research by Phil Greenwood

Die M1 75mm Pack Haubitze wurde von der US Army nach dem ersten Weltkrieg als leichte Artilleriewaffe entwickelt. Sie sollte möglichst überall hin transportiert werden können und wurde daher zerlegt und auf Packtieren verladen. Die ersten Geschütze kamen 1927 und hatten noch Holzräder. Schon bald kamen verbesserte Ausführungen mit luftbereiften Metallrädern und dem M8 Gestell. Diese wurden dann auch im zweiten Weltkrieg verwendet. Die M1A1 war eine ausgezeichnete Waffe für Luftlandeeinheiten und konnte per Gleiter oder an Fallschirmen abgesetzt werden. Die britischen Streitkräfte erhielten 826 Stück, der Großteil ging an die Fallschirmtruppe. Als Zugmaschine stand dort ein spezieller Jeep mit Munitionsanhänger zur Verfügung. Alle diese Komponenten passten in die Horsa Gleiter. Die M1A1 Pack Haubitze hatte eine Reichweite von 8790 Metern und verfeuerte ein 6,6 kg Explosivgeschoss oder auch HEAT Panzerabwehrgranaten sowie Rauchgranaten. Das Gesamtgewicht auf dem M8 Kastengestell betrug nur 653 kg und konnte in 9 Segmente zerlegt werden. Bei den britischen Truppen diente die Pack Haubitze bis in die frühen 1960er Jahre. 🇩🇪

© Translation Michael Knoblich ACADEMY EUROPE GmbH

在第一次世界大战后美国陆军开发了 75 毫米的 M1 榴弹炮作为一种适合任何地域作战的轻型炮兵武器。它被设计成能被分解成若干分件，可以使用骡子运载。最初这炮在 1927 年开发出来时是使用木轮的，后来被改为使用金属车轮和充气轮胎，最终在二战中使用了 M8 式拖架。改良后之 M1A1 榴弹炮在运用滑翔机和降落伞空投方面有极佳的表现。英国从美国手里接收到 826 门 M1A1 榴弹炮供其空降部队使用。这炮在英国服役时，它常被看到使用修改过的吉普和运弹药的小拖车拖在后面钻到 Horsa 滑翔机里面。M1A1 75mm 榴弹炮能发射 6.6 公斤的高爆炸弹射 8,790 米外的目标，而且也能发射反坦克的穿透弹和 WP 烟雾弹。使用 M8 式拖架后的 M1A1 重量只有 653 公斤，并可拆分为 9 件单元零件作降落伞空投。这种成功的小型火炮在英国军队服役至 1960 年代初。 🇨🇳

ILLUSTRATION 图示说明:

CORRECT METHOD FOR APPLYING DECALS : HINWEISE ZUM ANBRINGEN DER DECALS :

正确使用水贴纸的方法:

1. Clean model parts surface with wet cloth. Entsprechende Stellen am Modell feucht reinigen.
将需要贴上水贴之部位表面擦干净。
2. Cut out the decal parts and dip them in cold water for 15 ~20 seconds. Decal ausschneiden und für 15-20 Sek. ins Wasser legen.
将所需之贴纸剪下泡在清水里约15至20秒。
3. Place it on correct position of the model kit. Decal an der richtigen Stelle auflegen.
将湿透之贴纸取出置放于正确之位置旁。
4. Slide off the decal from the base paper on to the model kit surface with a cotton stick. Decal mit Wattestäbchen festhalten und Papier darunter wegziehen.
用棉花棒轻推贴纸表面使其从底纸滑出至模型表面之正确位置。
5. When decal get dry then complete. Decal mit Papiertuch andrücken und trocknen.
待其自然干透后即完成。

ICON INSTUCTION: 图标说明:



Open Hole
Loch bohren
钻孔



Remove
Abtrennen
切除



2 Sets needed
Vorgang wiederholen
同样的制作二组



Bend
Biegen
曲折



Optional
Auswahl
可以选择采用



Apply Decal
Decal anbringen
贴水贴纸



Instant Glue For Metal
Sekundenkleber verwenden
瞬间接着剂,金属用



Fill Hole
Verspachteln
把孔填平



Do not cement
Nicht kleben
不用粘合

COLOR SUGGESTION: FARBTABELLE: 涂装指引:

| Color | 涂料表 | MR. Hobby | Hobby Color | Humbrol | Tamiya |
|------------------|-------------------------|-----------|-------------|---------|---------------------|
| Black | Schwarz 黑色 | H-2 | C-2 | 21 | X-1 |
| Silver | Silber 银色 | H-8 | C-8 | 11 | X-11 |
| Flat Earth | Flat Earth 土色 | H-72 | C-22 | 29 | XF-52 |
| Yellow | Gelb 黄色 | H-4 | C-4 | 69 | X-8 |
| Copper | Kupfer 铜色 | H-10 | C-10 | 12 | XF-6 |
| Steel | Stahl 黑铁色 | H-18 | C-28 | 53 | / |
| Tyre black | Reifenschwarz 轮胎黑 | H-77 | C-137 | 85 | / |
| Flat black | Mattschwarz 消光黑 | H-12 | C-33 | 33 | XF-1 |
| Clear red | Klar-Rot 透明红 | H-90 | / | / | X-27 |
| Wood brown | Holzbraun 木棕色 | H-37 | C-43 | / | / |
| Olive drab | Oliv braun 橄榄褐 | H-78 | C-38 | 66 | XF-62 |
| Flat Brown | Matt Braun 消光棕色 | H-17 | / | 62 | XF-10 |
| Flat Flesh | Hautfarbe 肌肉色 | H-44 | C-112 | 61 | XF-15 |
| Khaki | Kaki 卡其色 | H-81 | C-55 | 19 | XF-49 |
| Leather Brown | Leder braun 皮革棕色 | / | / | 62 | XF-64 |
| Buff | Buff 浅黄色 | / | / | / | XF-57 |
| Gun metal | Metall-grau 枪金属 | / | / | / | X-10 |
| Dark Wood | Dunkholz 暗木色 | H-12 | C-33 | 33 | XF-1 |
| Maroon | Maroon 褐红色 | / | / | / | / |
| Dark Red | Dunkelrot 暗红色 | / | / | / | XF-1 20% + XF-7 80% |
| Dark Green | Dunkelgrün 暗绿色 | / | / | / | XF-1 20% + XF-5 80% |
| Semi-gloss black | Schwarz Seidenmatt 半光黑色 | / | C-82 | / | / |

READ BEFORE ASSEMBLING: VOR ZUSAMMENBAU LESEN: 组装必读:

- Carefully Study instruction before assembling. Anleitung studieren und verständlich machen. 组装前请阅读清楚制作指引。
- Keep plastic model glue and tools away from children. Kleber, Farben, Werkzeuge und Plastiktüten von Kindern fernhalten. 胶水,油漆及工具勿让小孩接触。
- Do not use cement or paint near open flame or sparks. Kleber/Farbe nicht in Nähe von offenen Flammen. 胶水及油漆勿接触火种。
- Do not work in closed room. Nur in ausreichend belüfteten Räumen arbeiten. 勿在密封地方制作模型。

PARTS LIST 零件展示表:



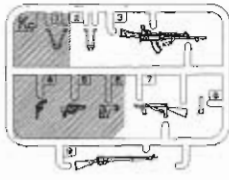
Bronco Models

Copyright © 2014

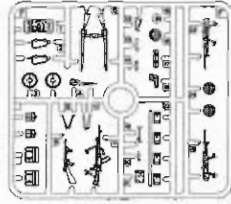
Made in China

中国制造

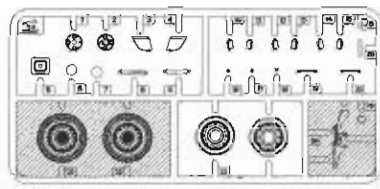
Kc × 2



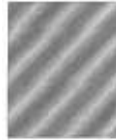
F × 1



Da × 2

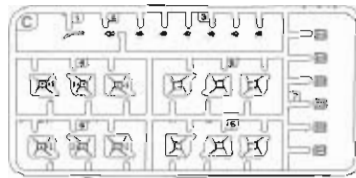


Dc × 1

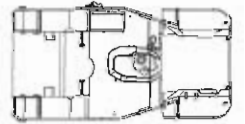


No use parts
不要部件

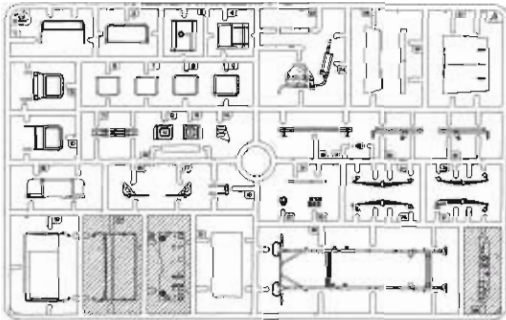
C × 1



G × 1



A × 1



J × 2



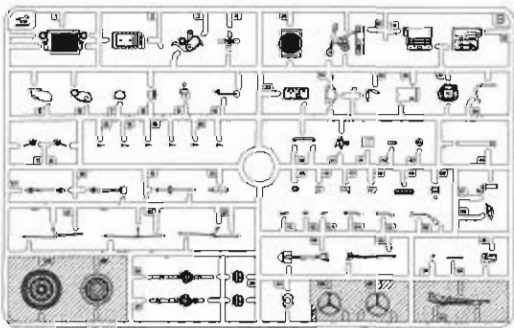
E × 1



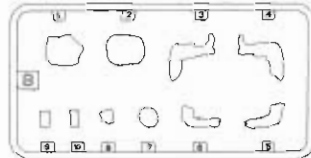
F × 1



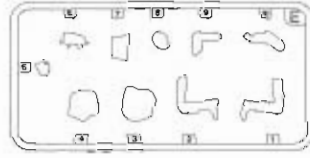
B × 1



B × 1



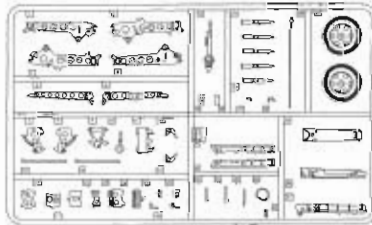
E × 1



M × 3



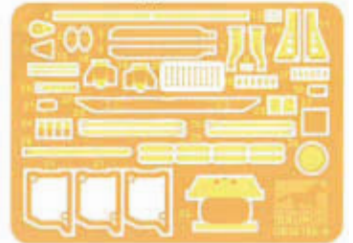
B × 1



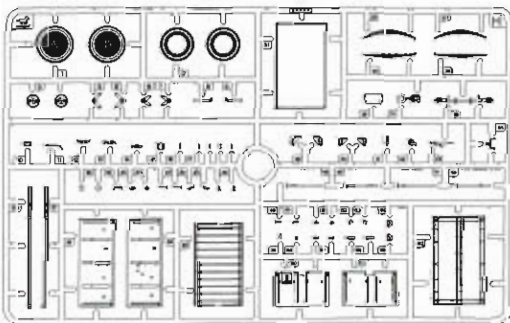
I × 3



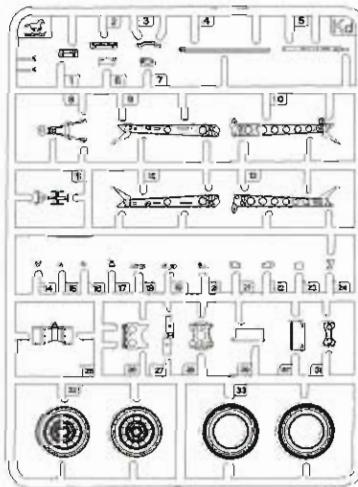
PA × 1



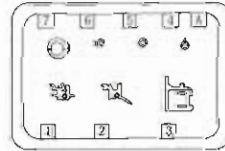
H × 1



Kd × 1



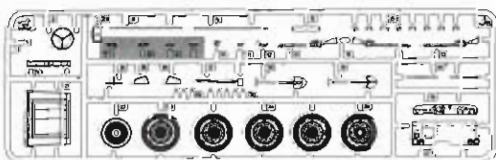
A × 1



PB × 1



Ja × 1



DECAL × 1



PC × 1



DECAL × 1



Z × 1 Gun metal
枪金属



CB35163

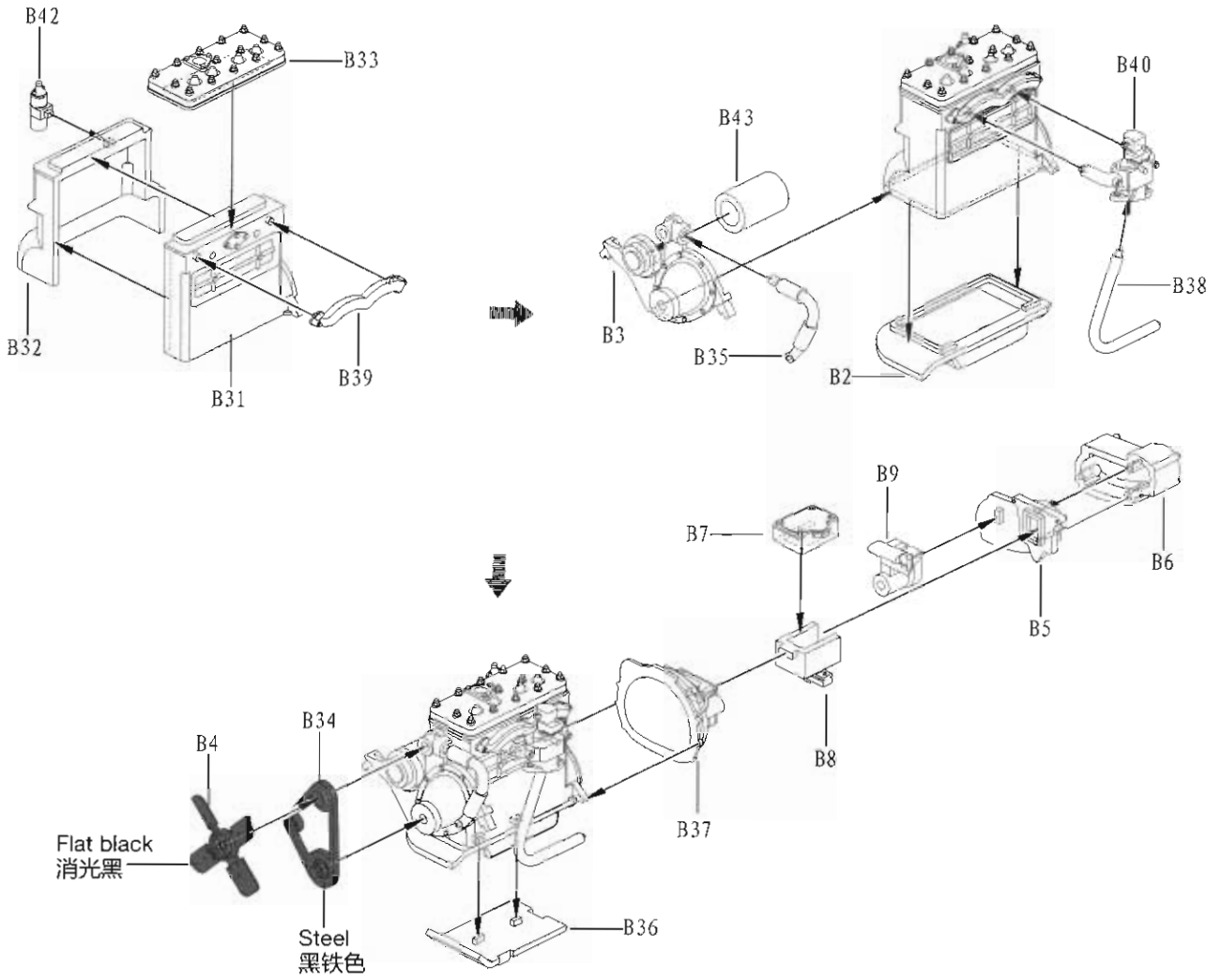
ILLUSTRATION 图示说明:

Caution:

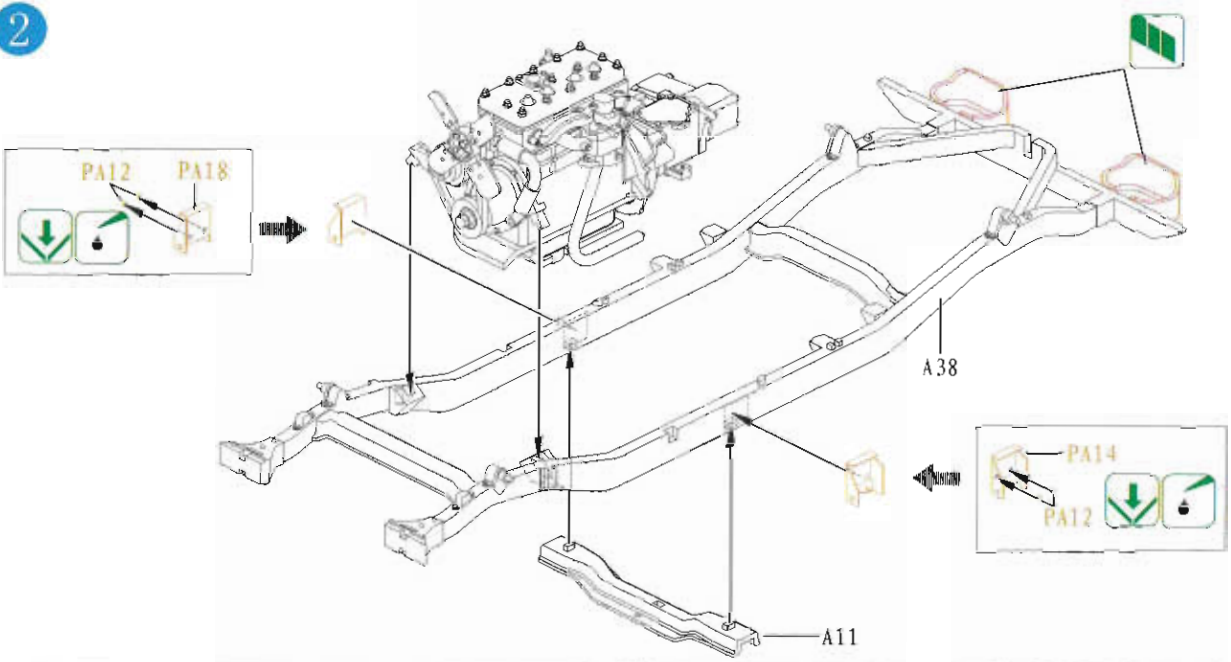
This kit contains a lot of small accurate parts, please carefully to read before to assembly.

此套件包含不少精细零件，请在制作前先翻阅说明书了解清楚。

1

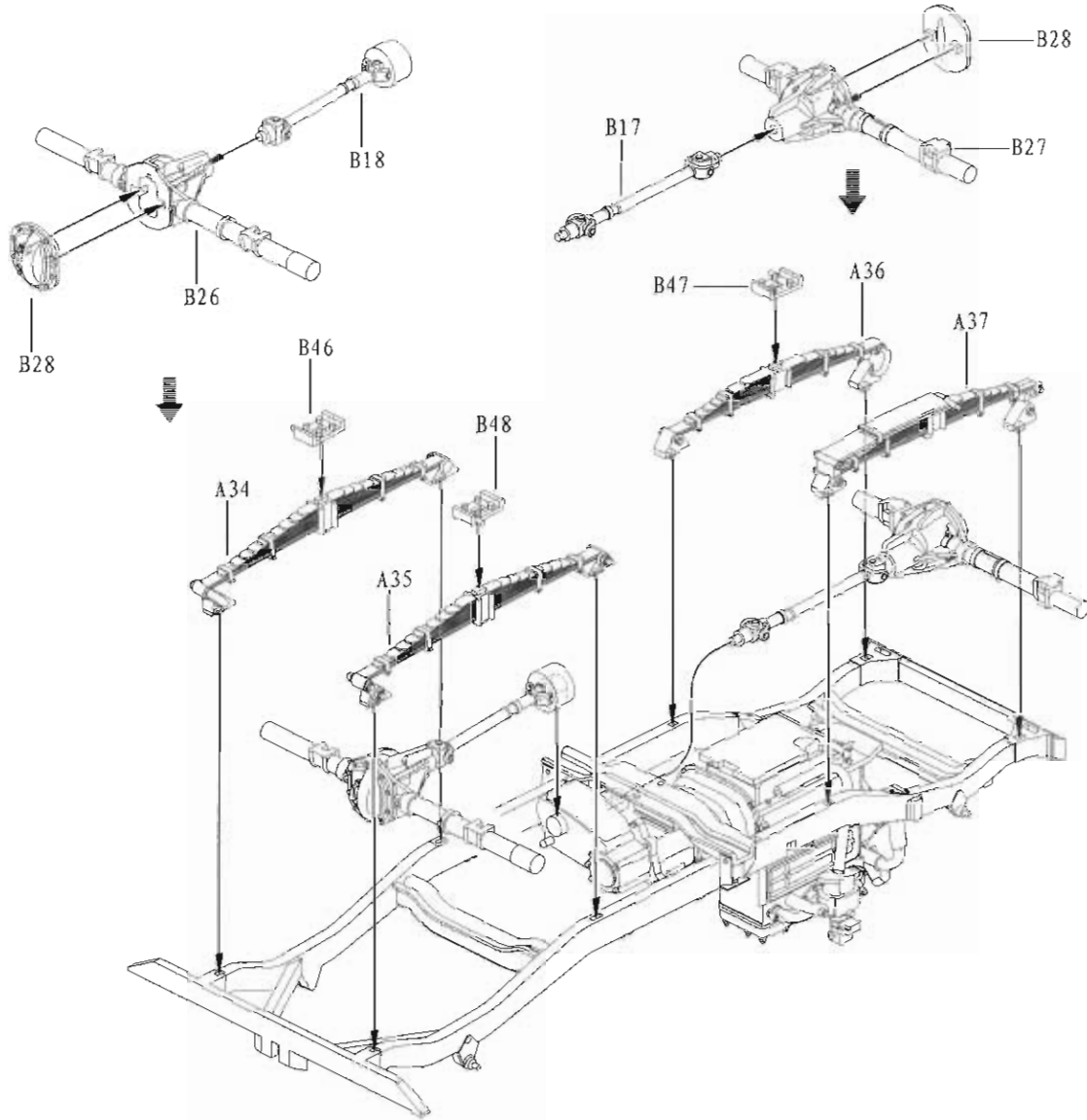


2



3

3



4

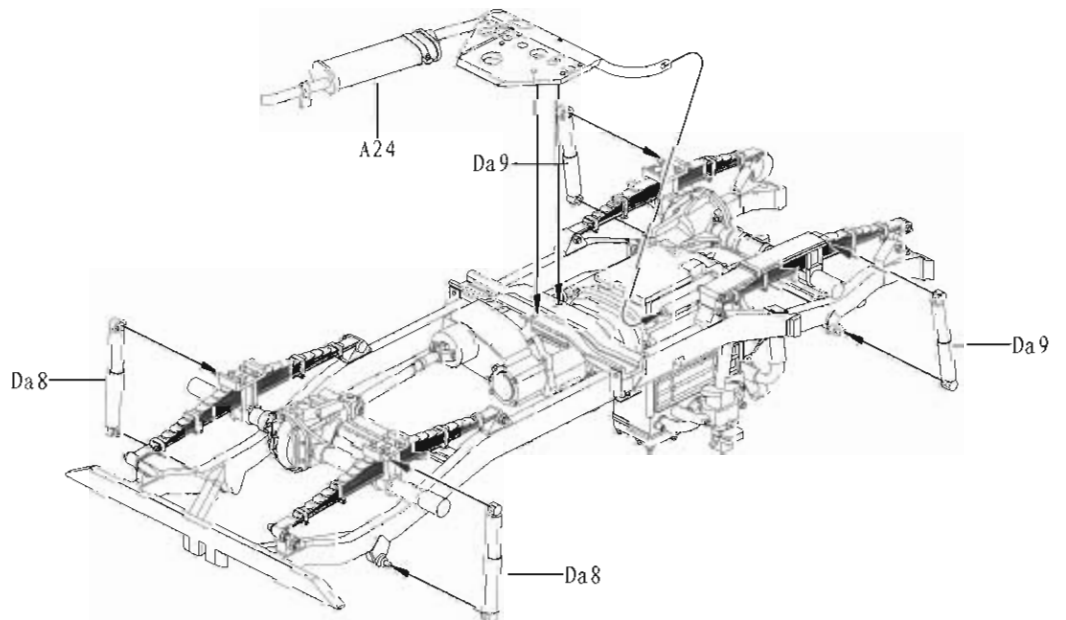
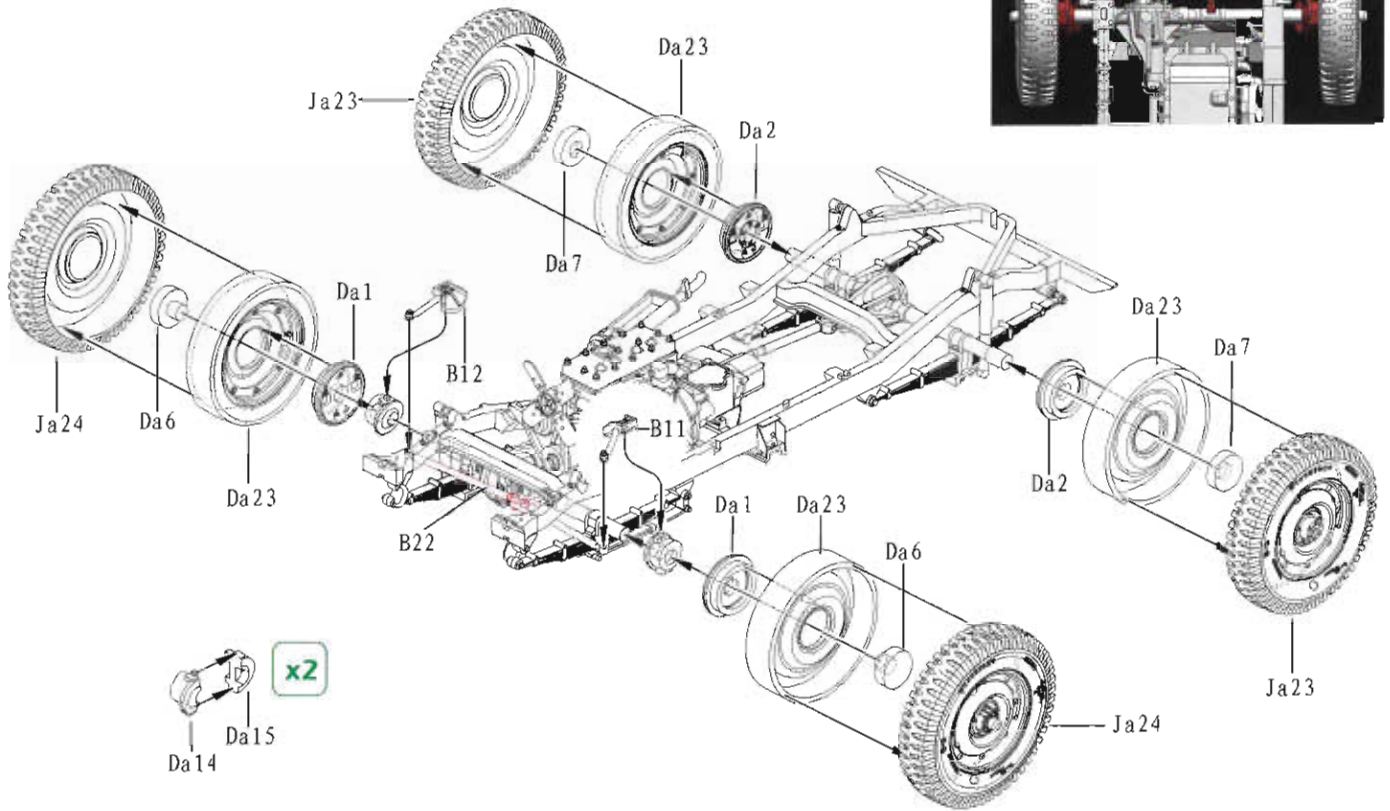
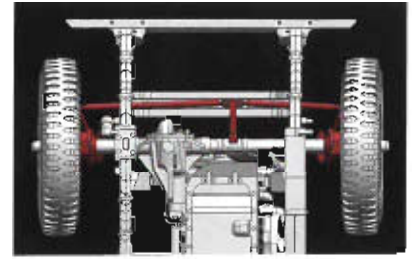
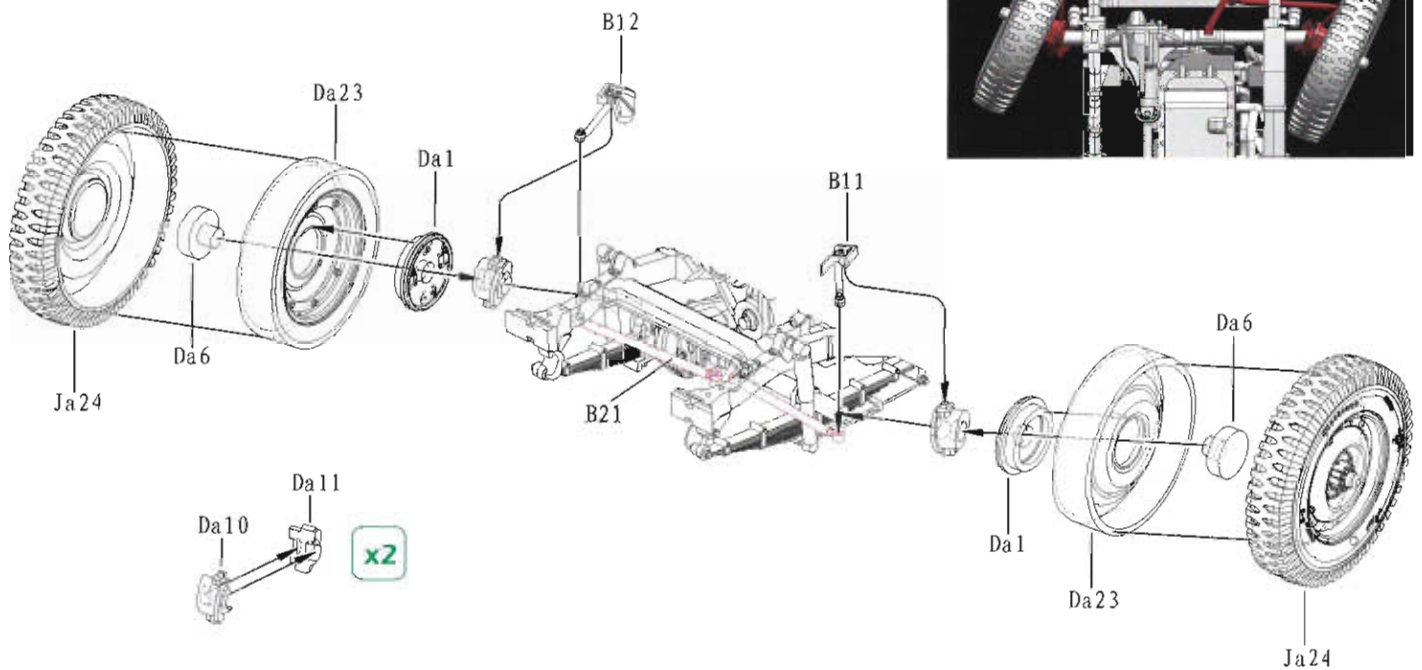
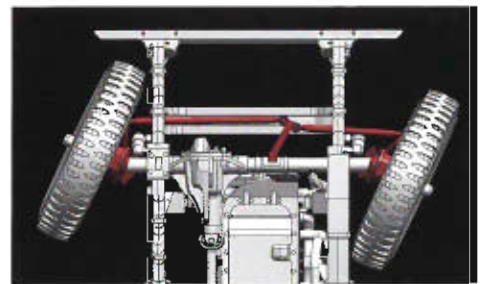


ILLUSTRATION 图示说明:

5 Option 1: Forward position 选装一 前进状态

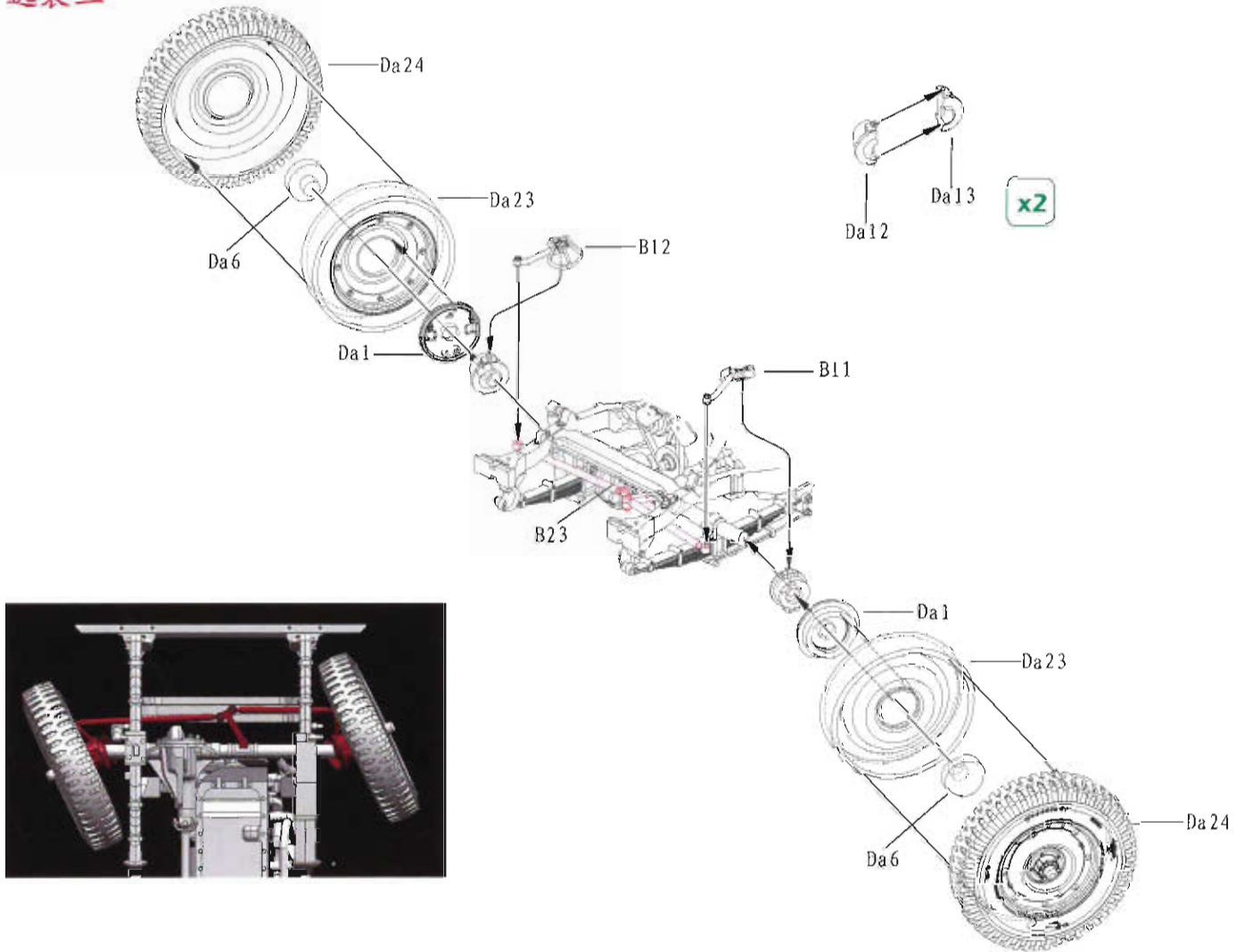


6 Option 2: Left-turn position 选装二 左转状态



7 Option 3:
选装三

Right-turn position
右转状态



8

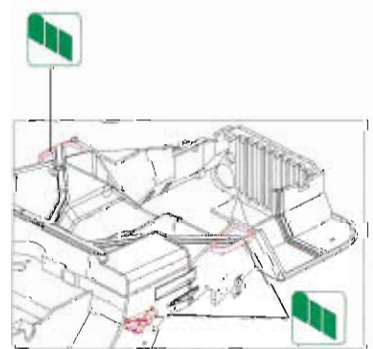
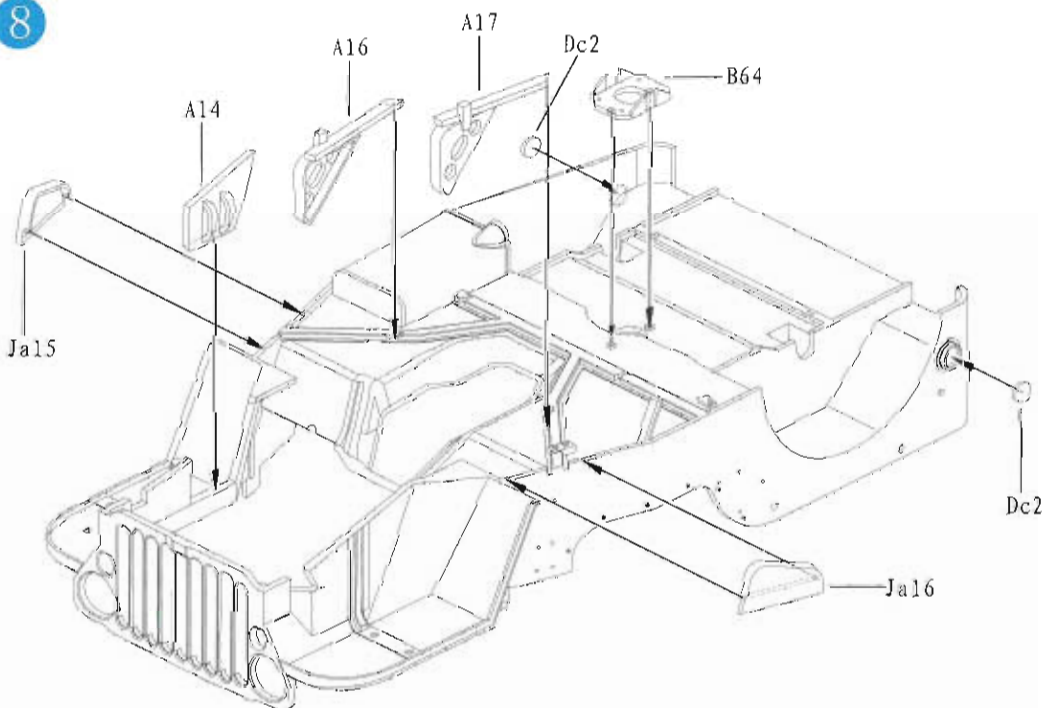
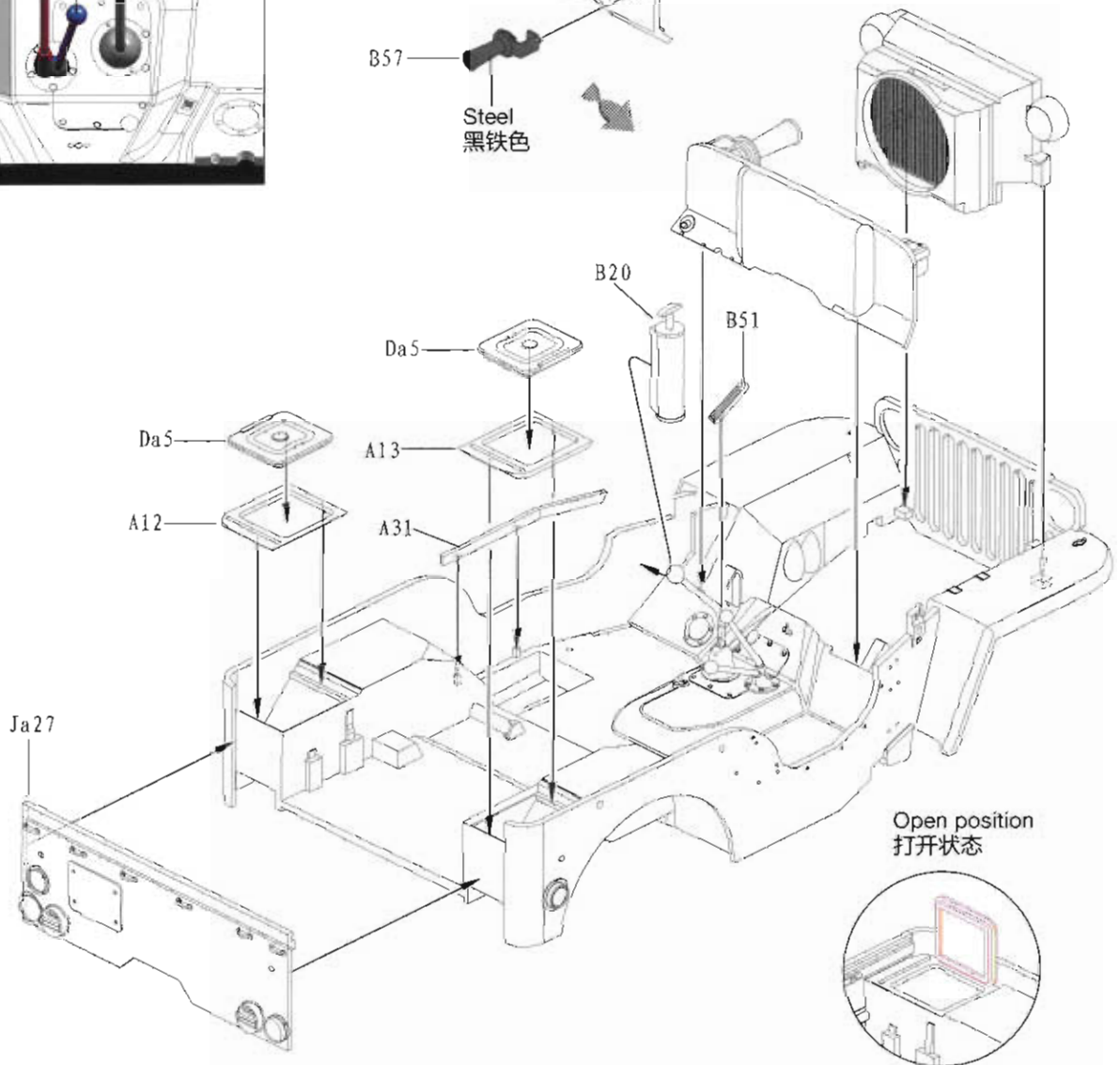
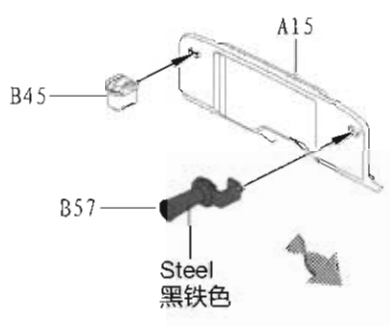
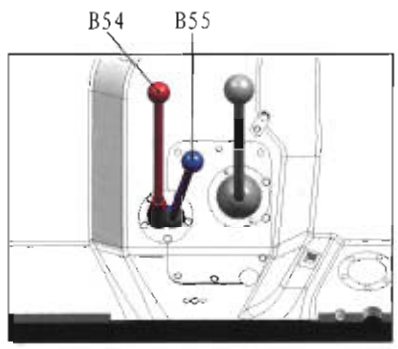
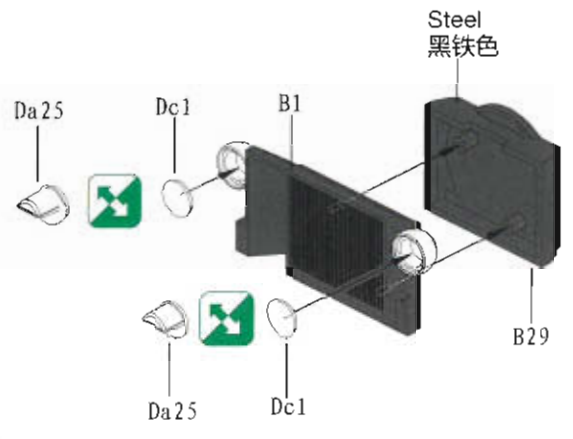
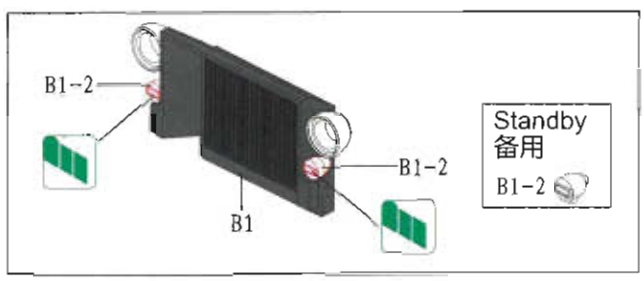
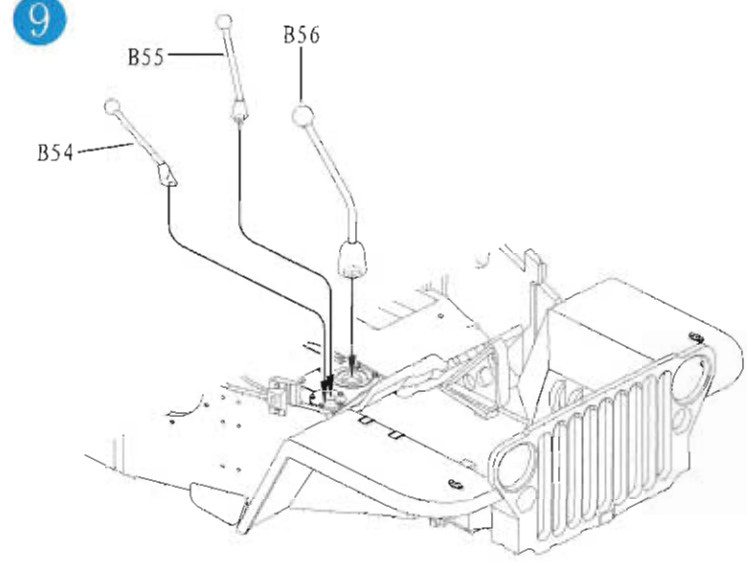
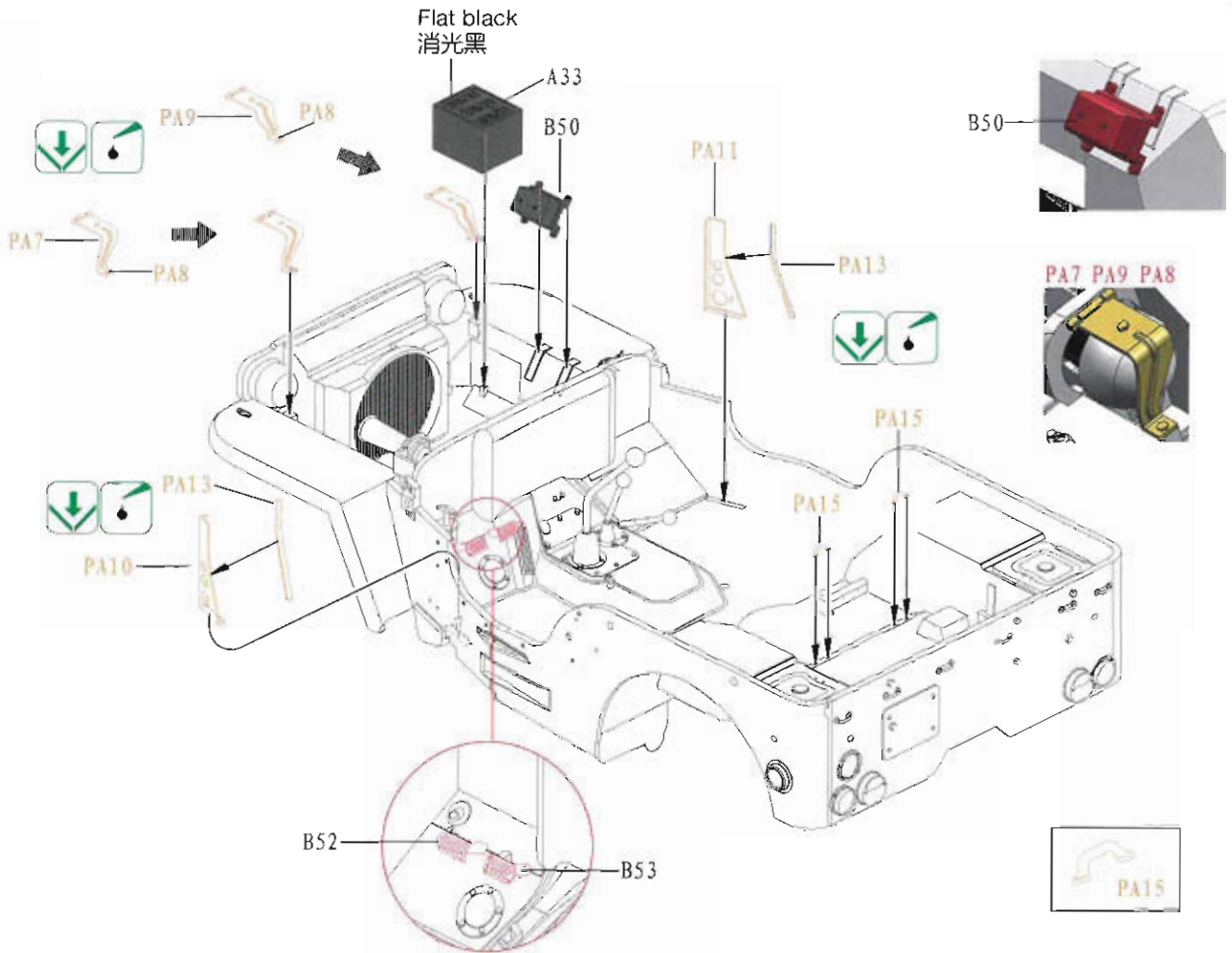


ILLUSTRATION 图示说明:

9



10



11

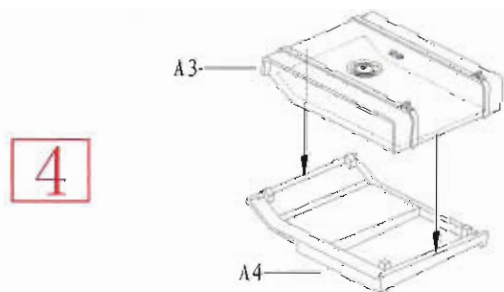
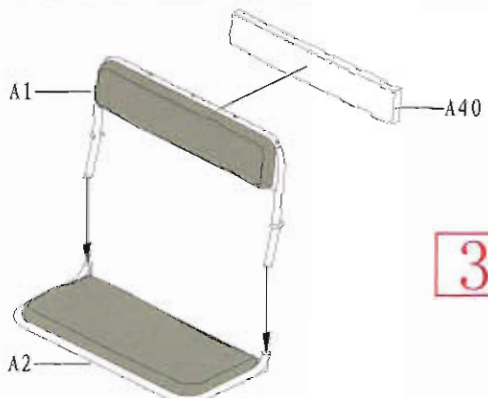
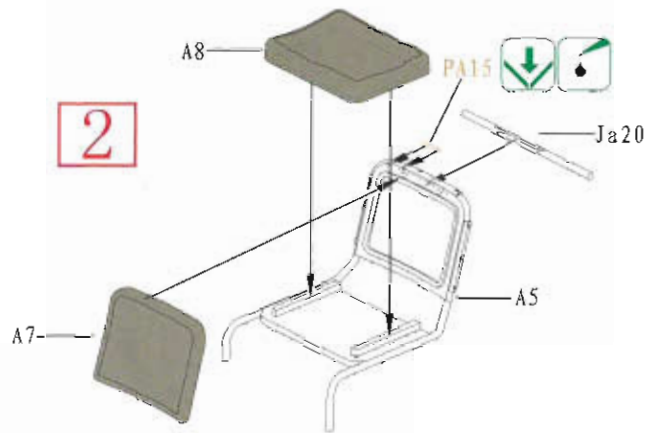
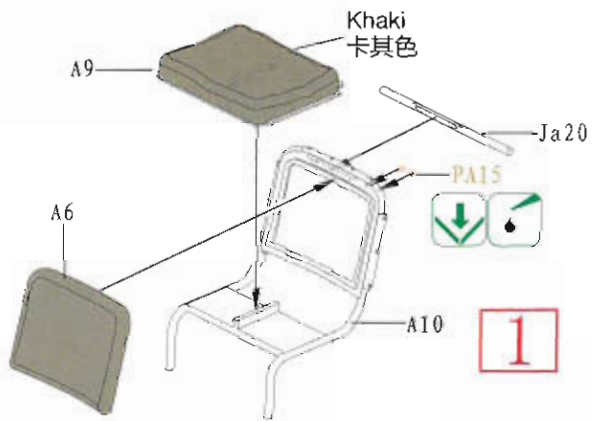
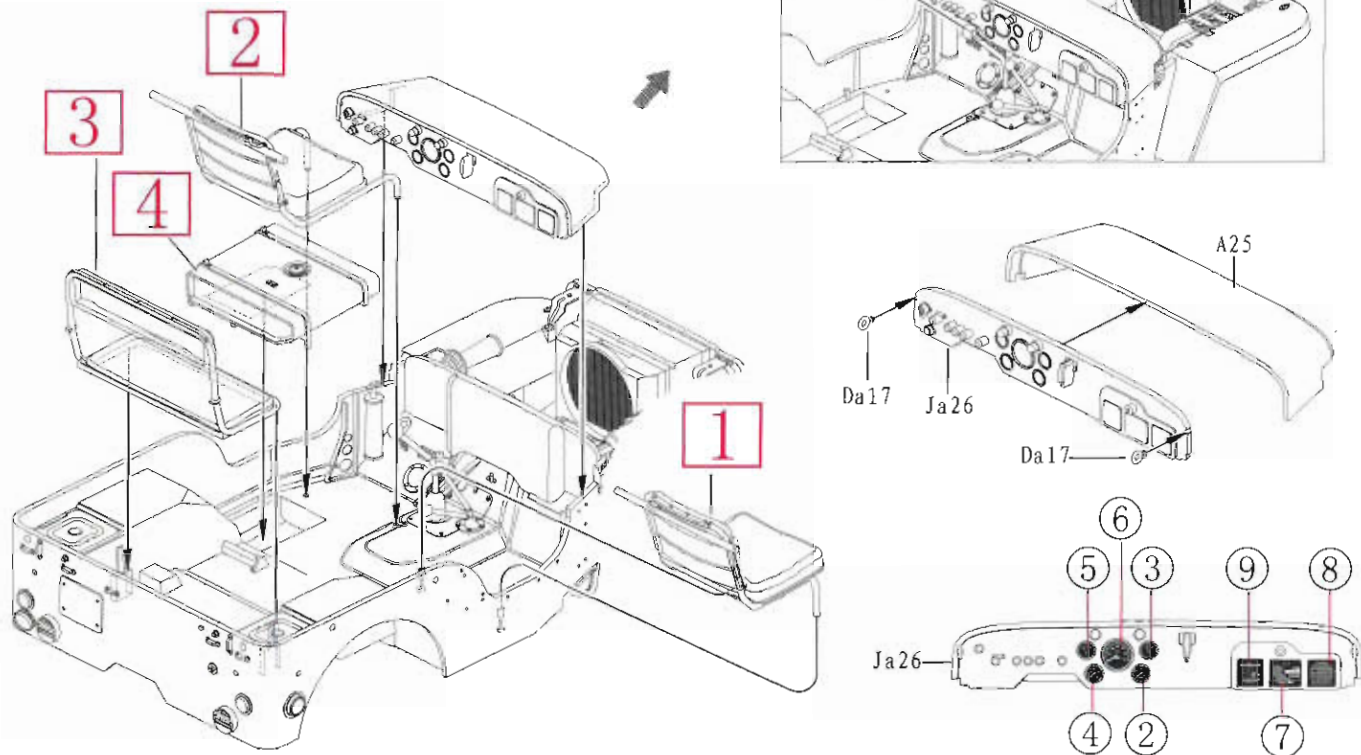
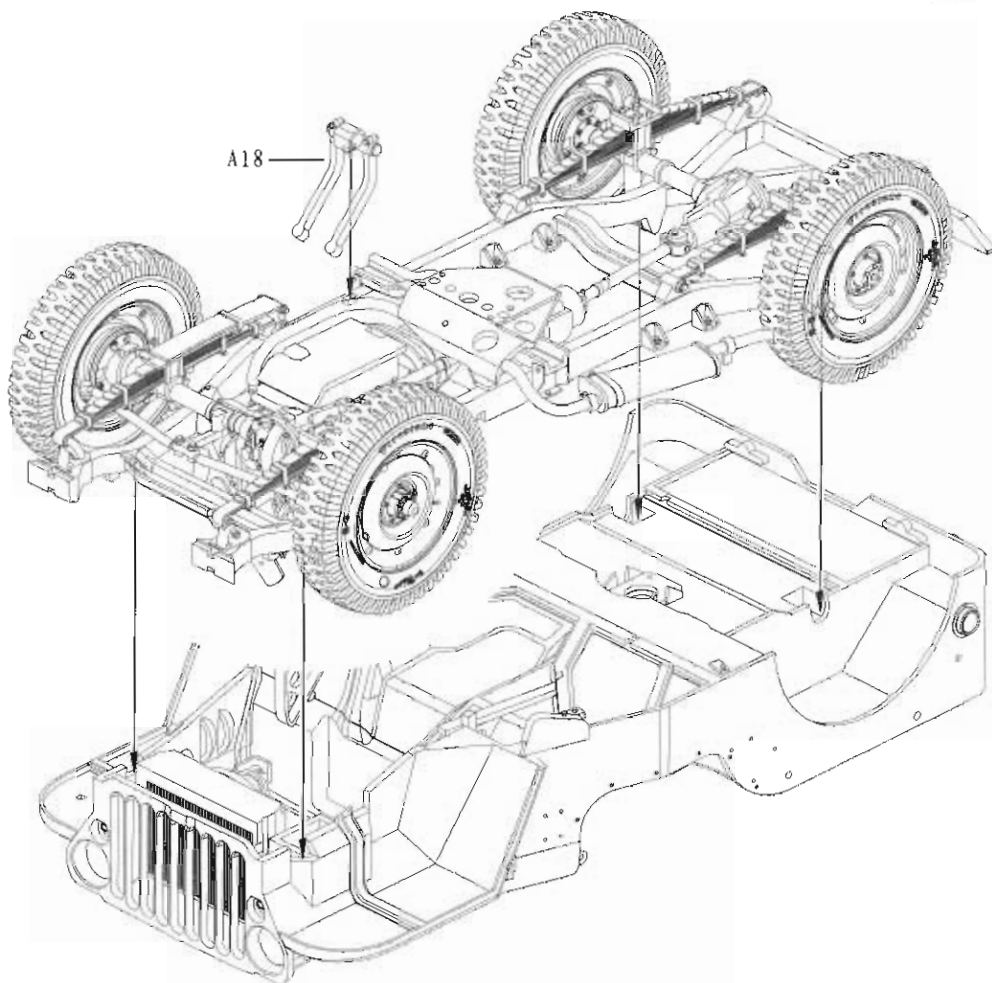


ILLUSTRATION 图示说明:

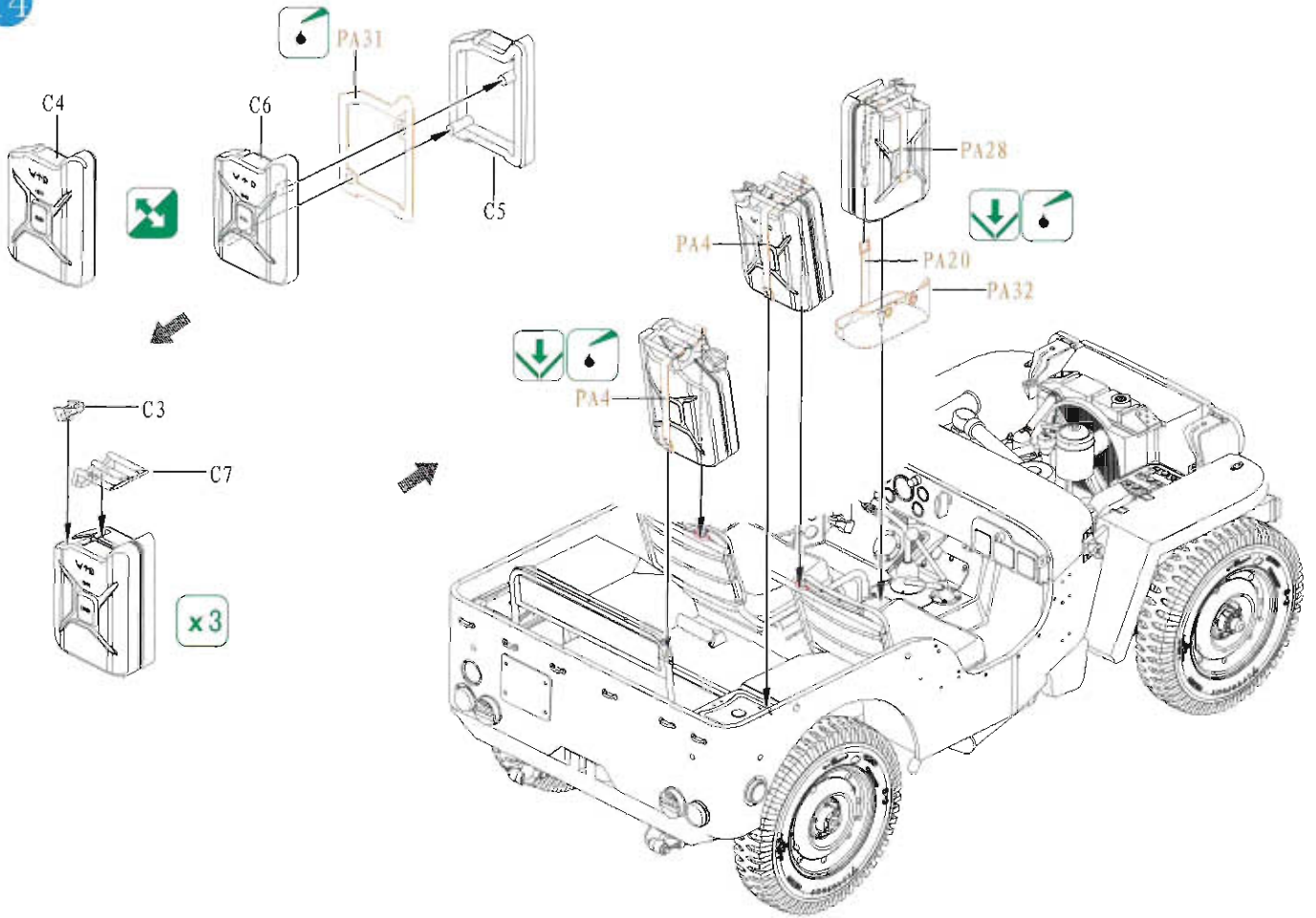
12



13



14



15

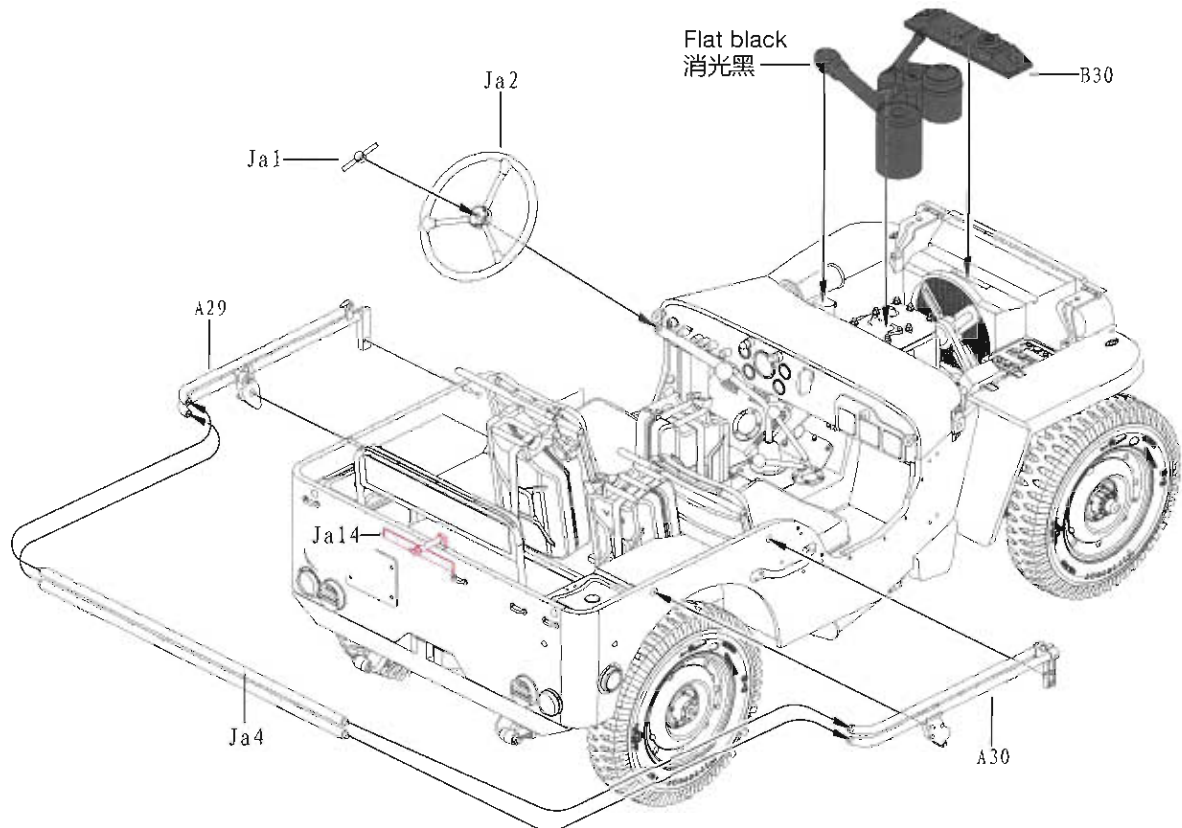
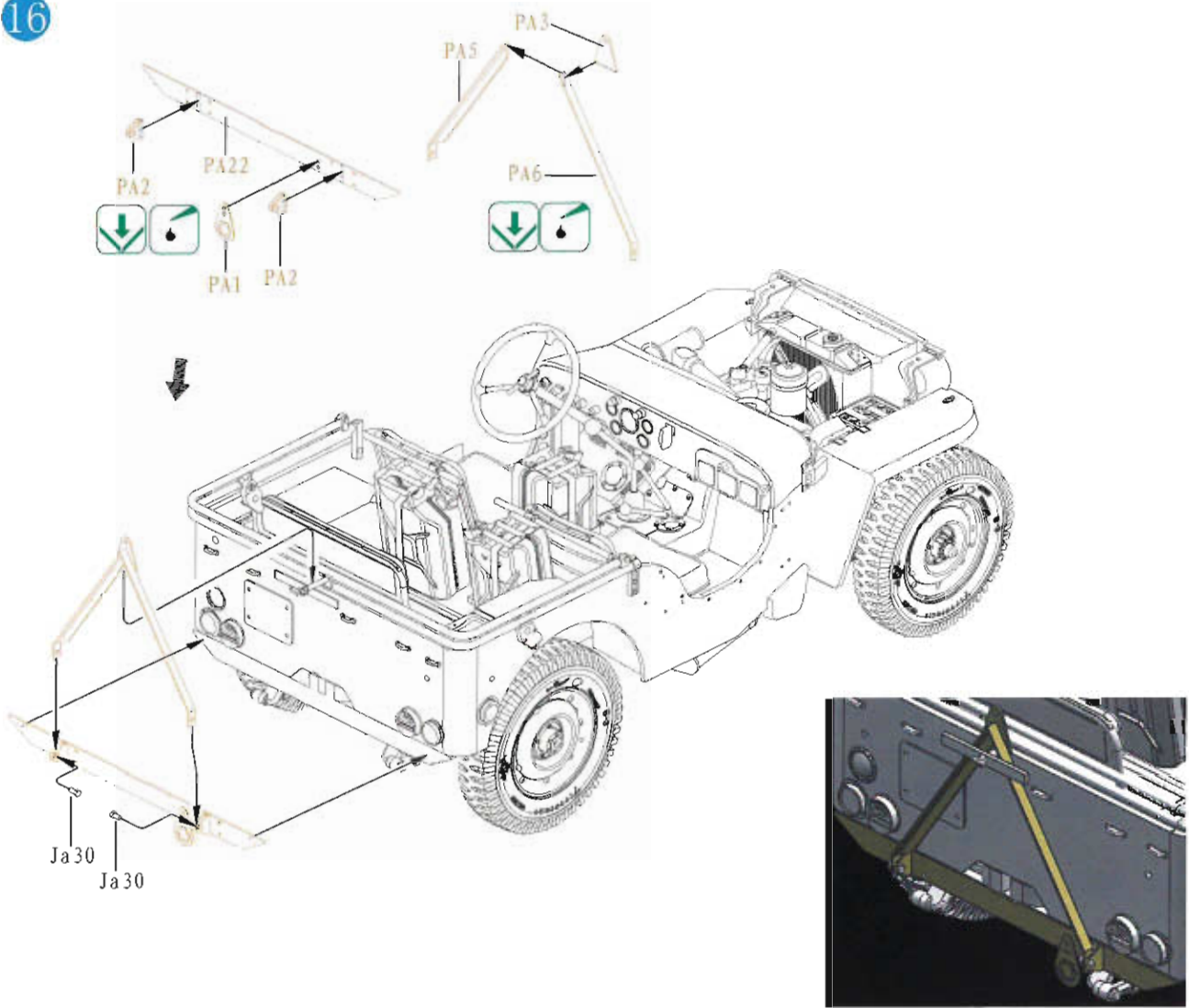
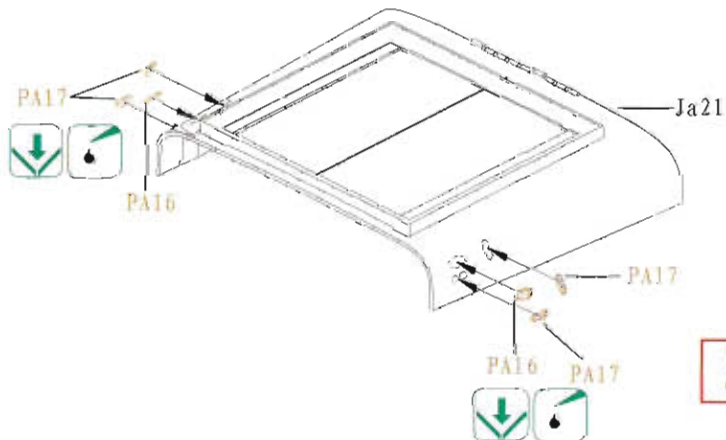


ILLUSTRATION 图示说明:

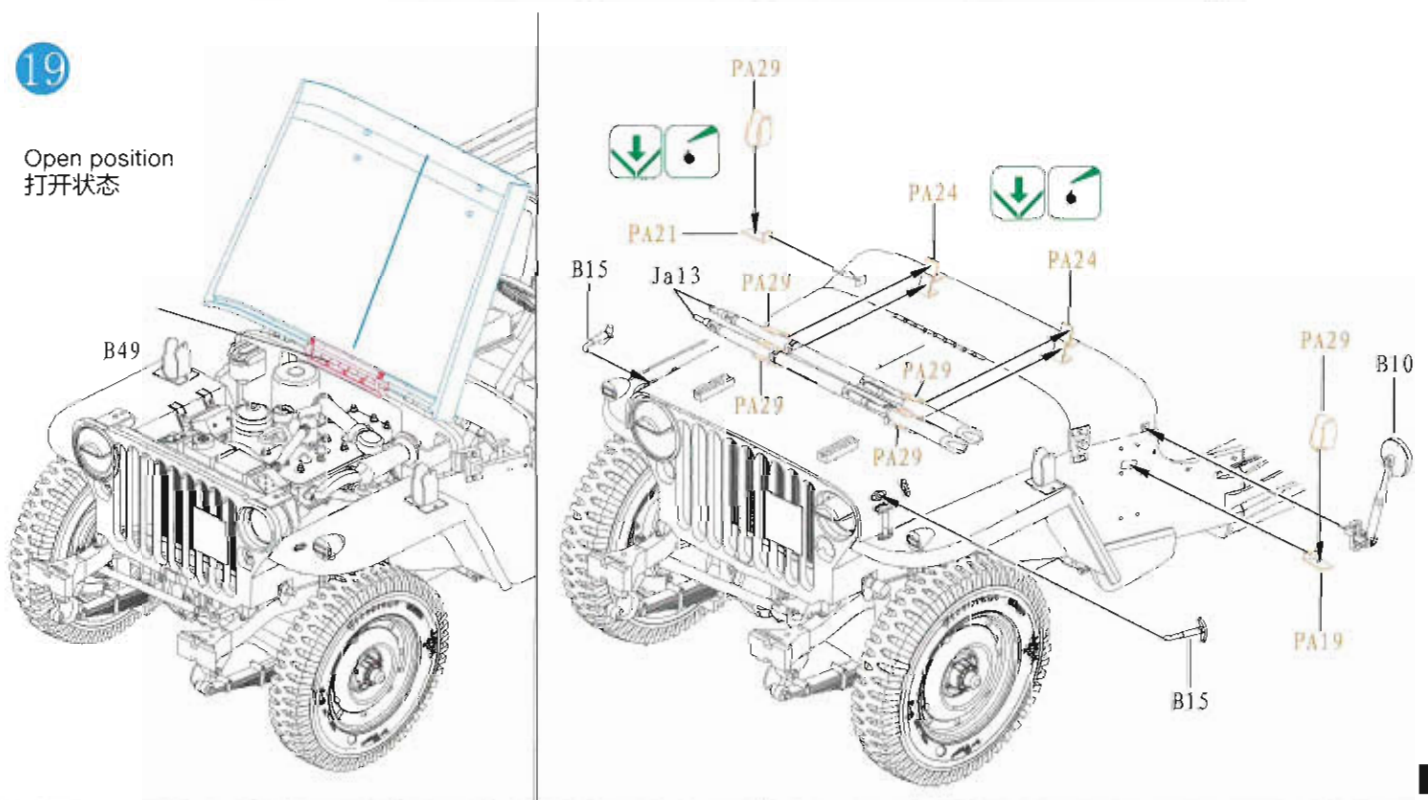
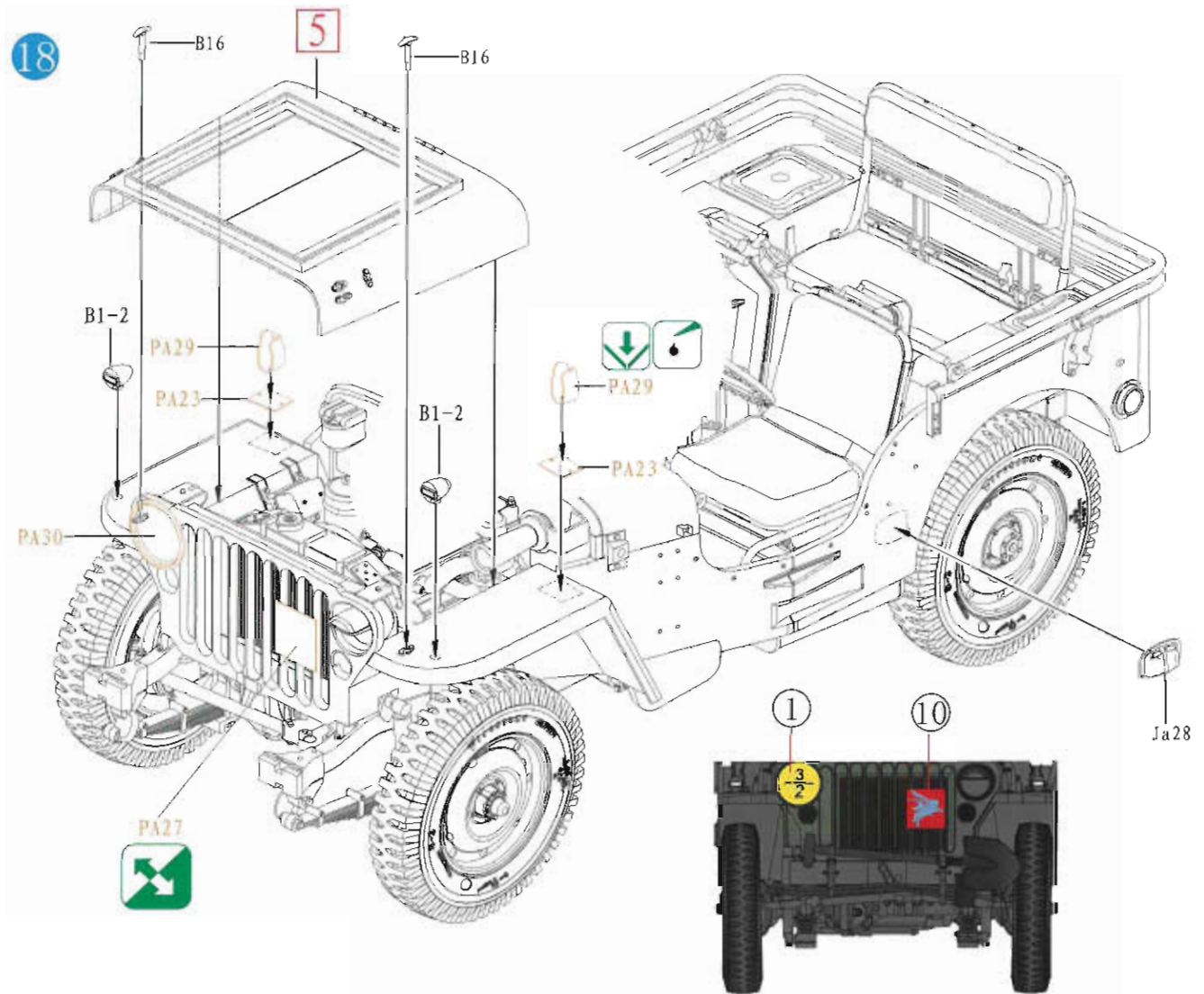
16



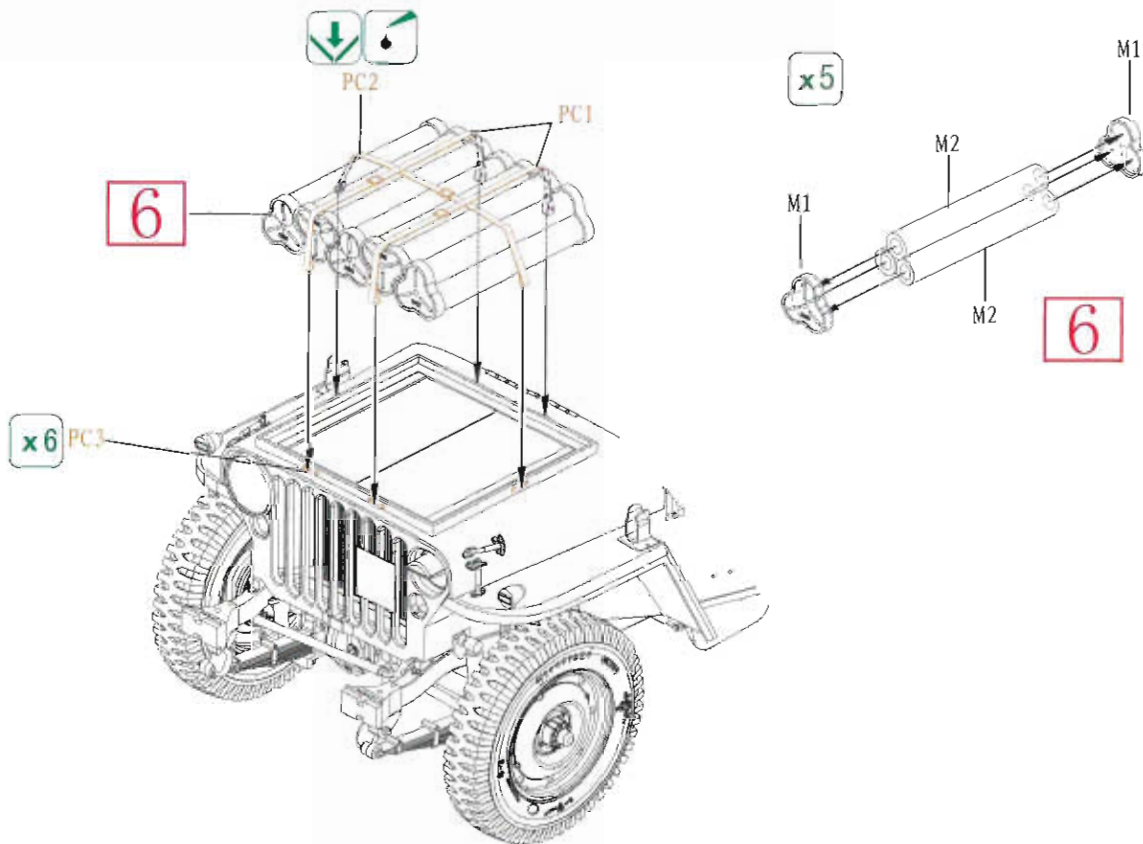
17



5

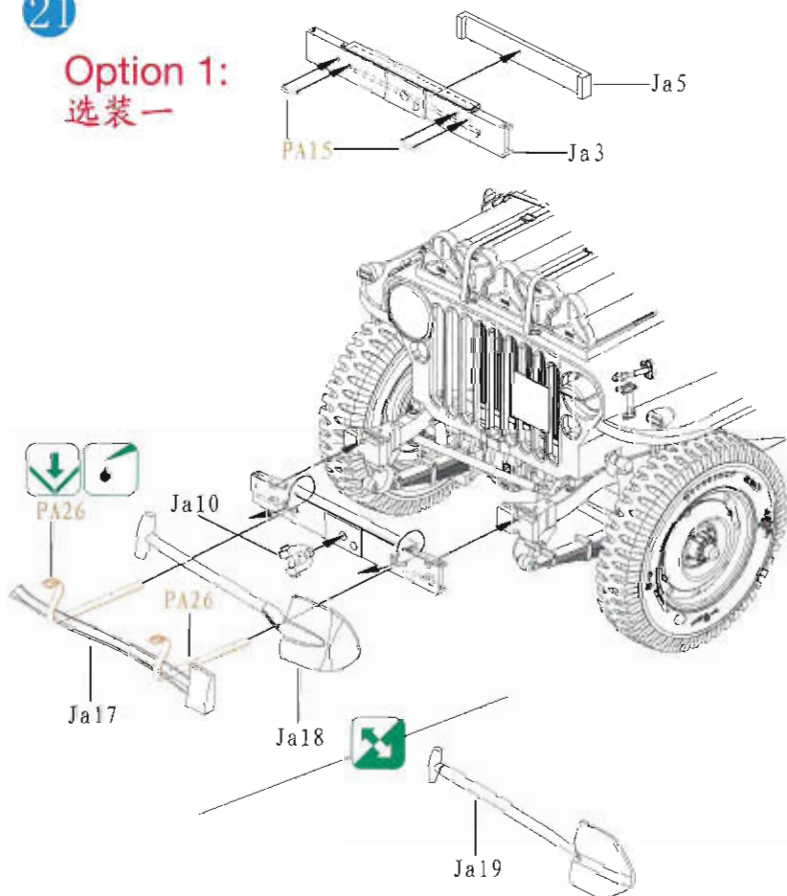


20

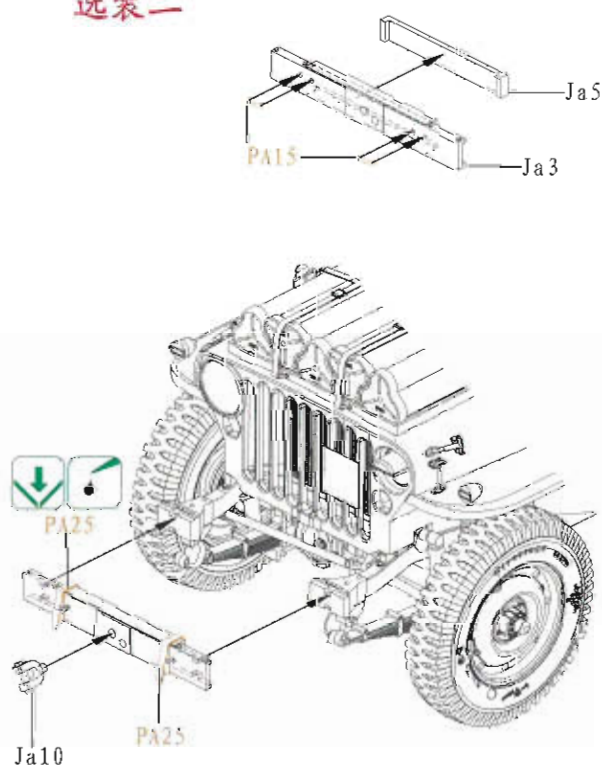


21

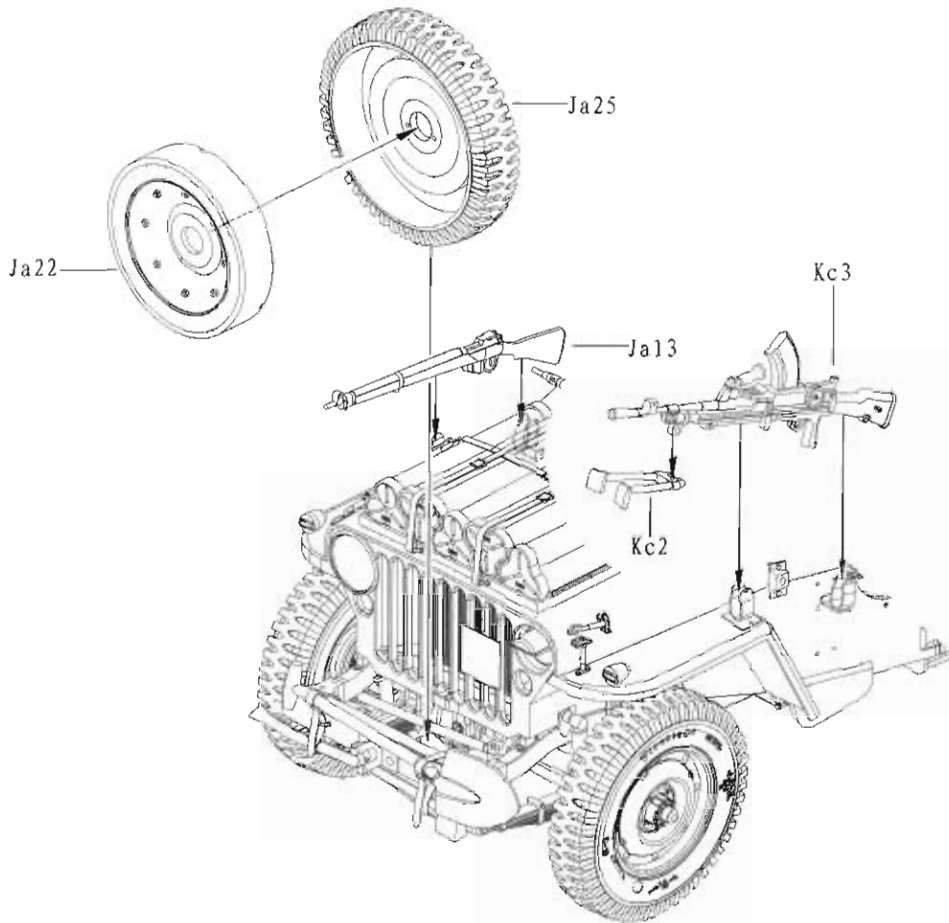
Option 1:
选装一



Option 2:
选装二

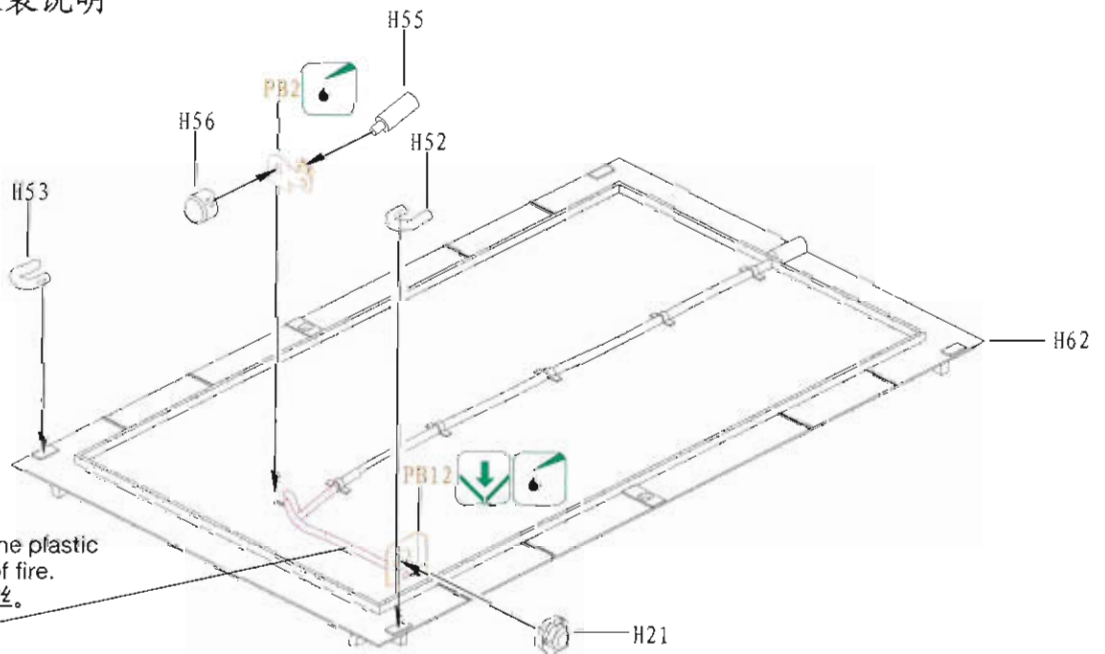


22



23

10-CWT trailer assembly guide
10-CWT拖载车组装说明



★ Caution: Make the wire from the plastic frame channel with the heat of fire.
注意：制作电线用流道加热拉丝。

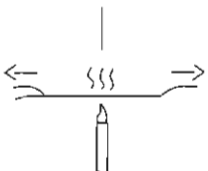
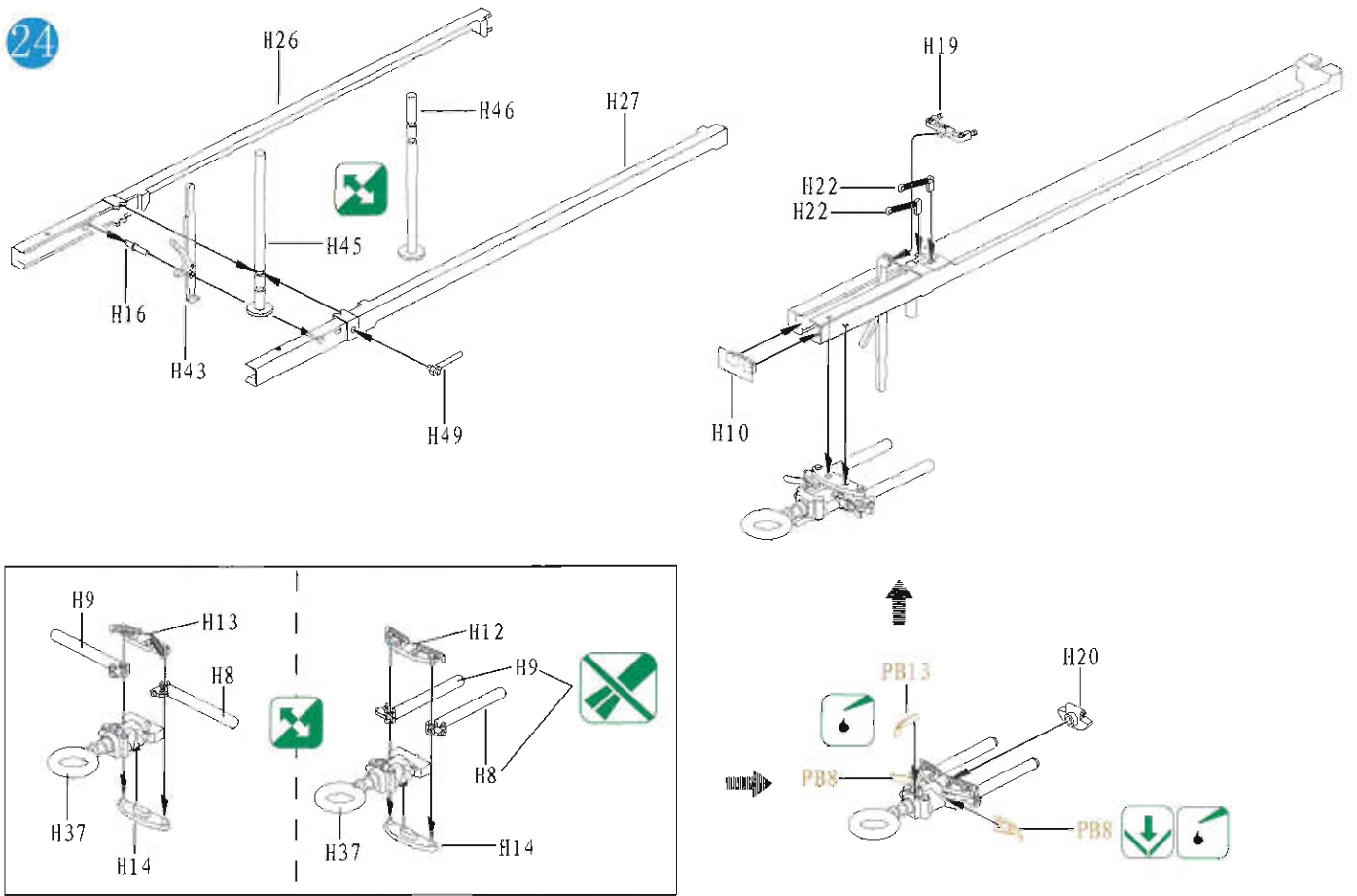
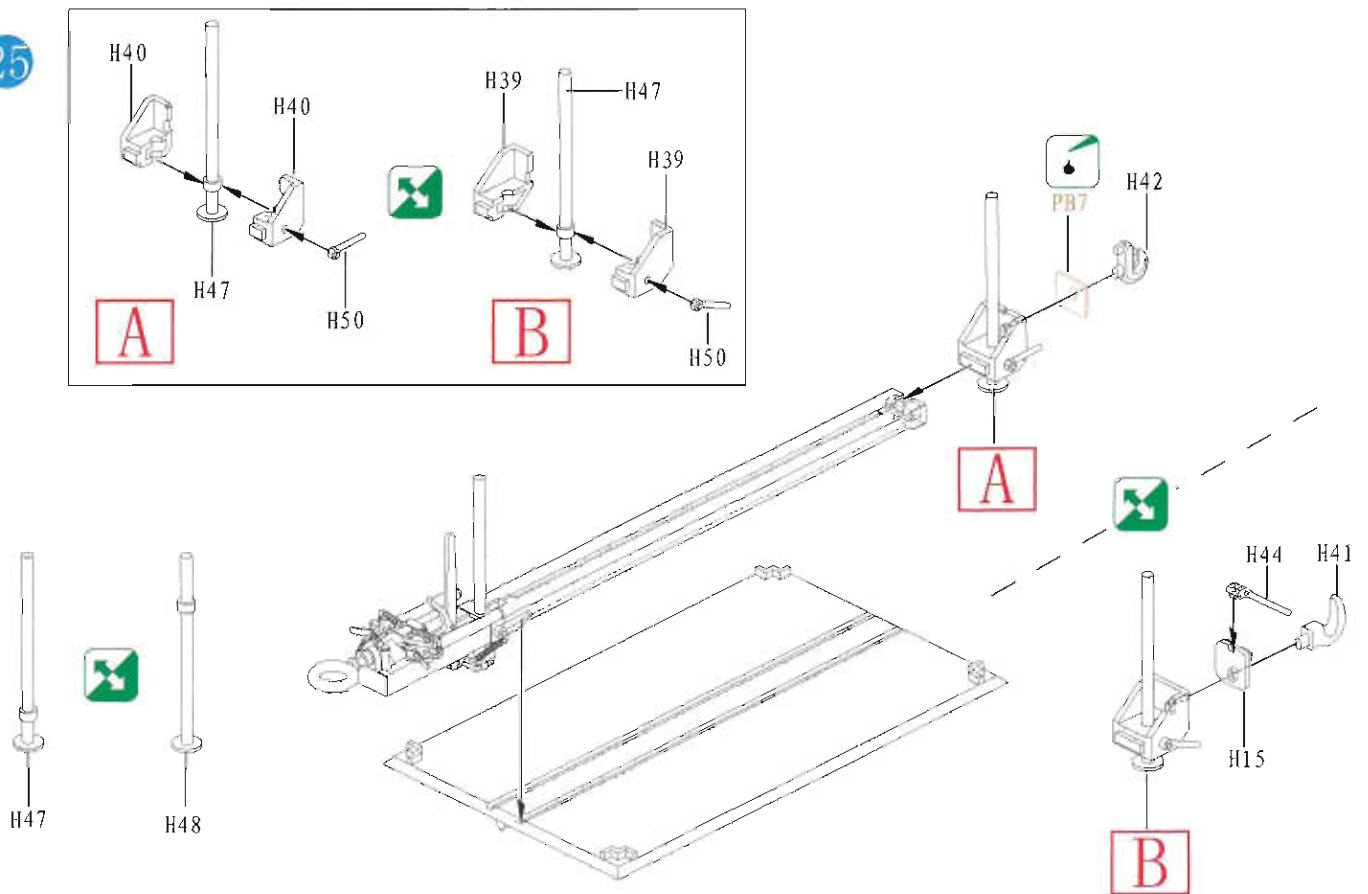


ILLUSTRATION 图示说明:

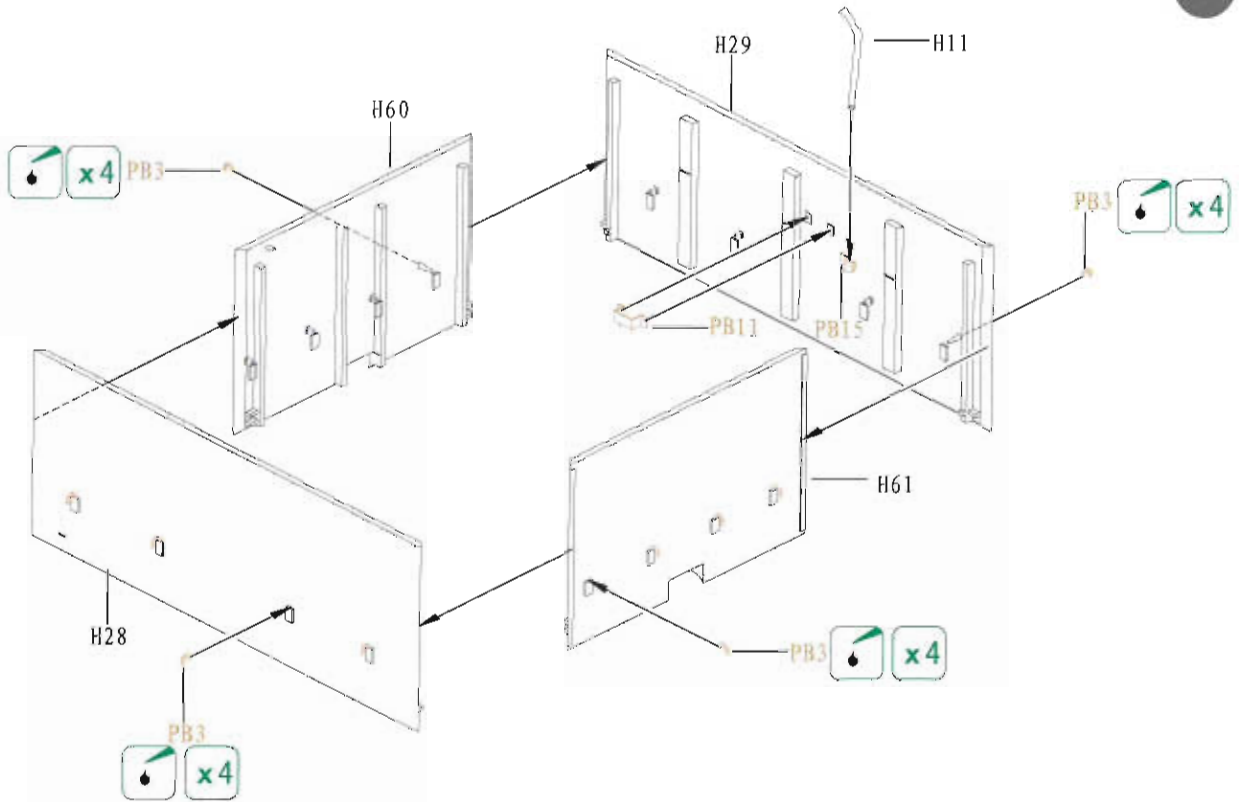
24



25



26



27

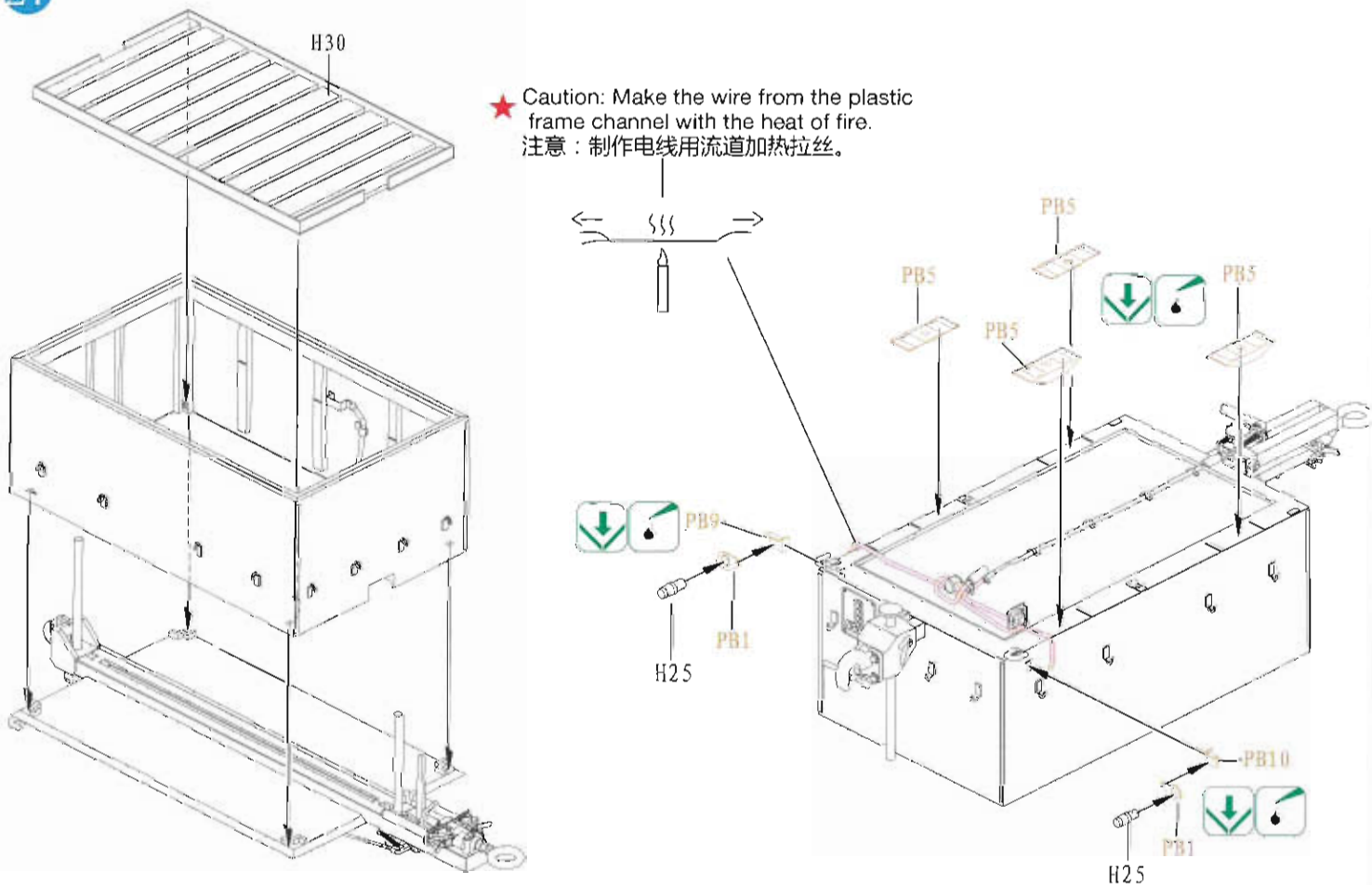
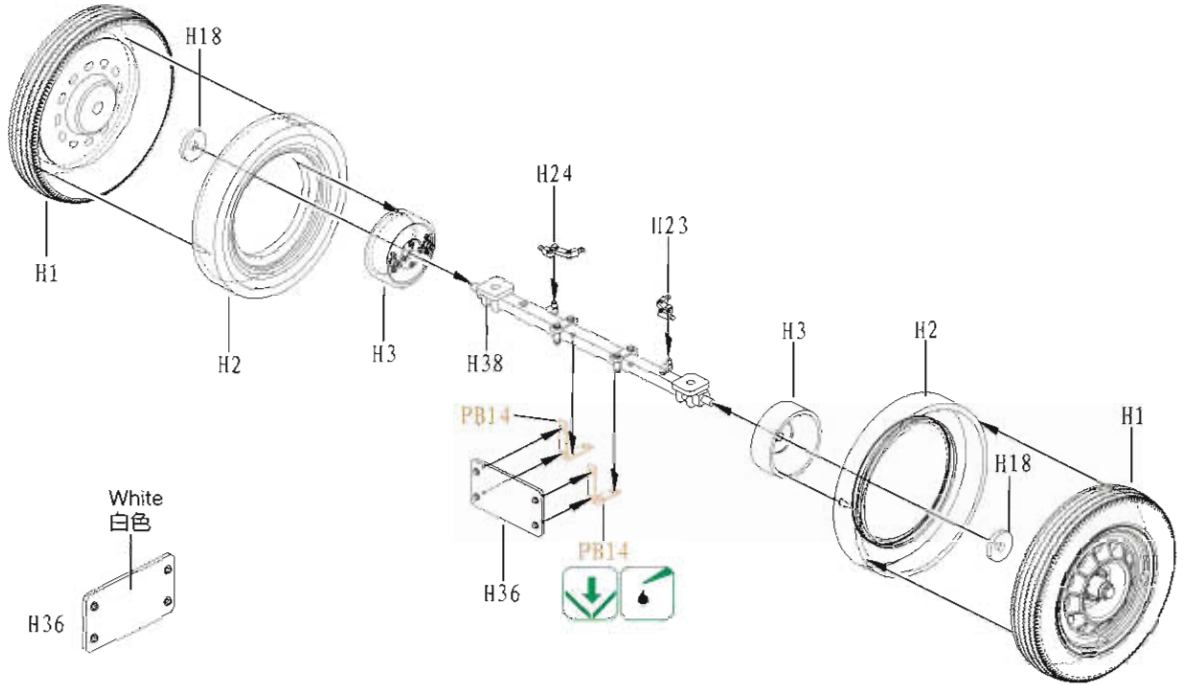
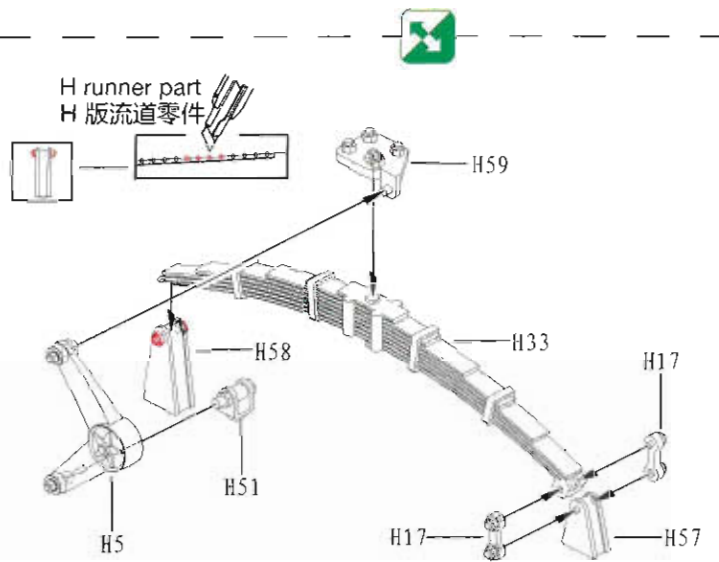
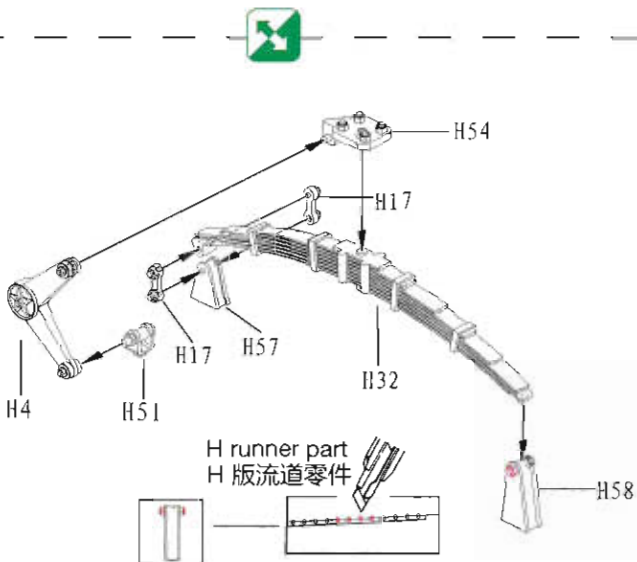
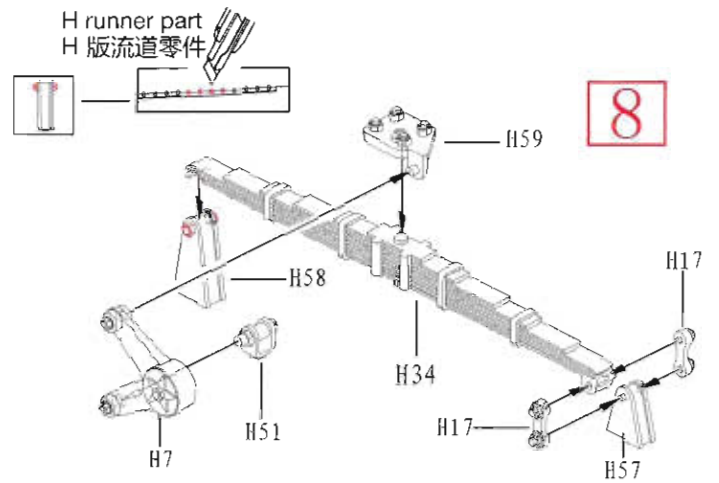
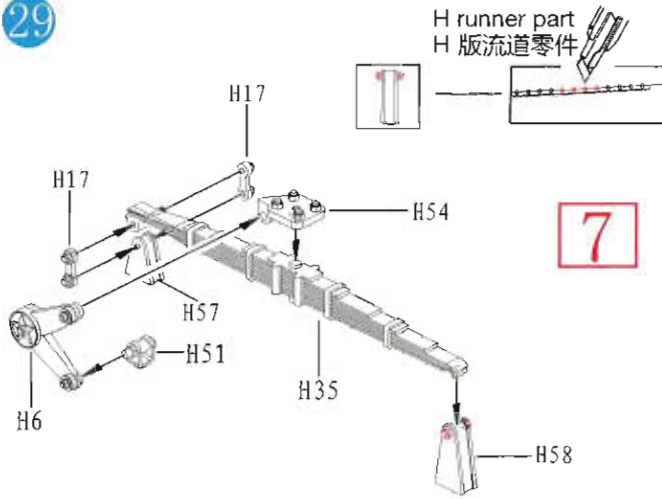


ILLUSTRATION 图示说明:

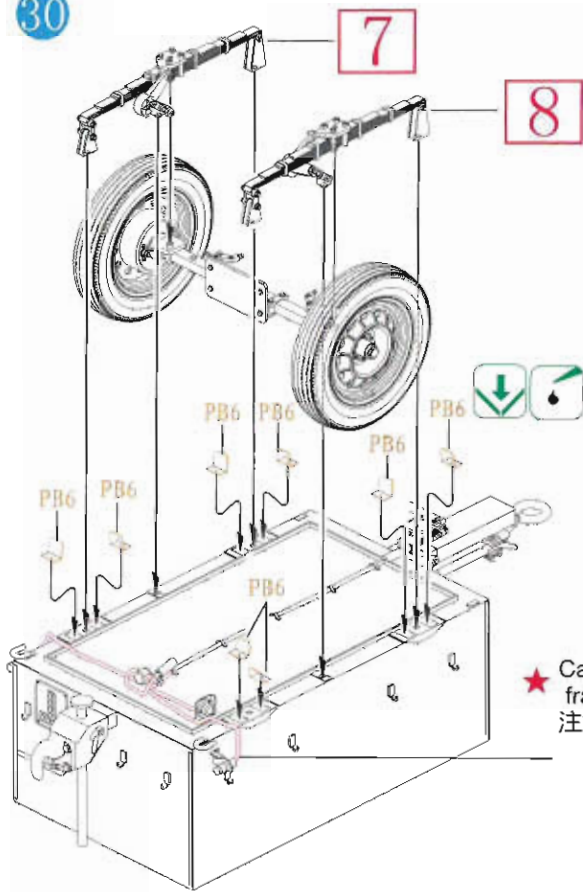
28



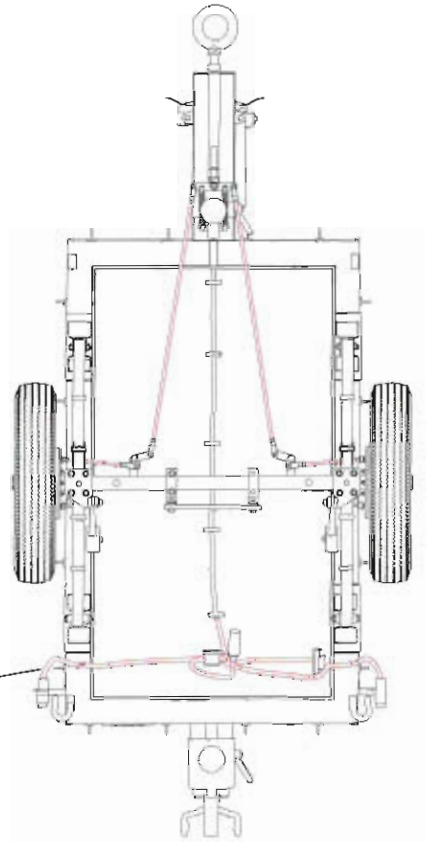
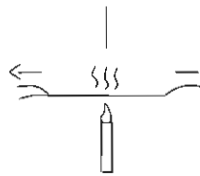
29



30



★ Caution: Make the wire from the plastic frame channel with the heat of fire.
注意：制作电线用流道加热拉丝。



31

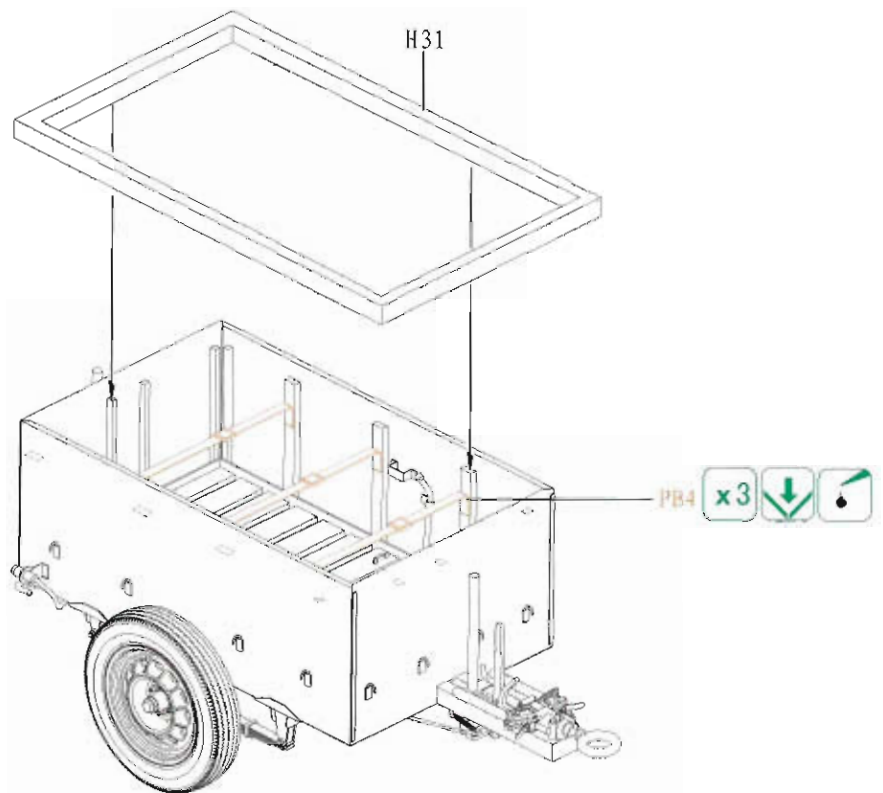
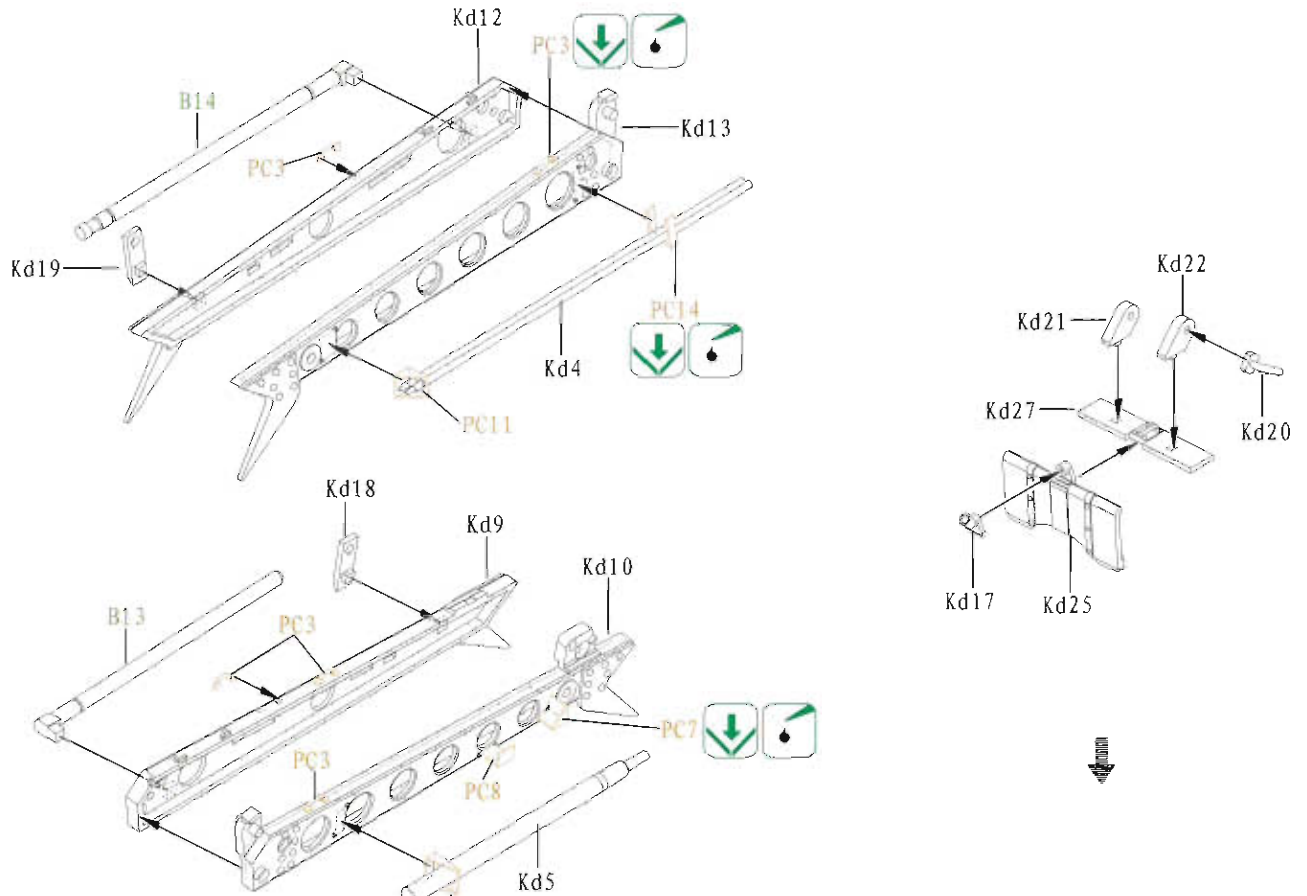
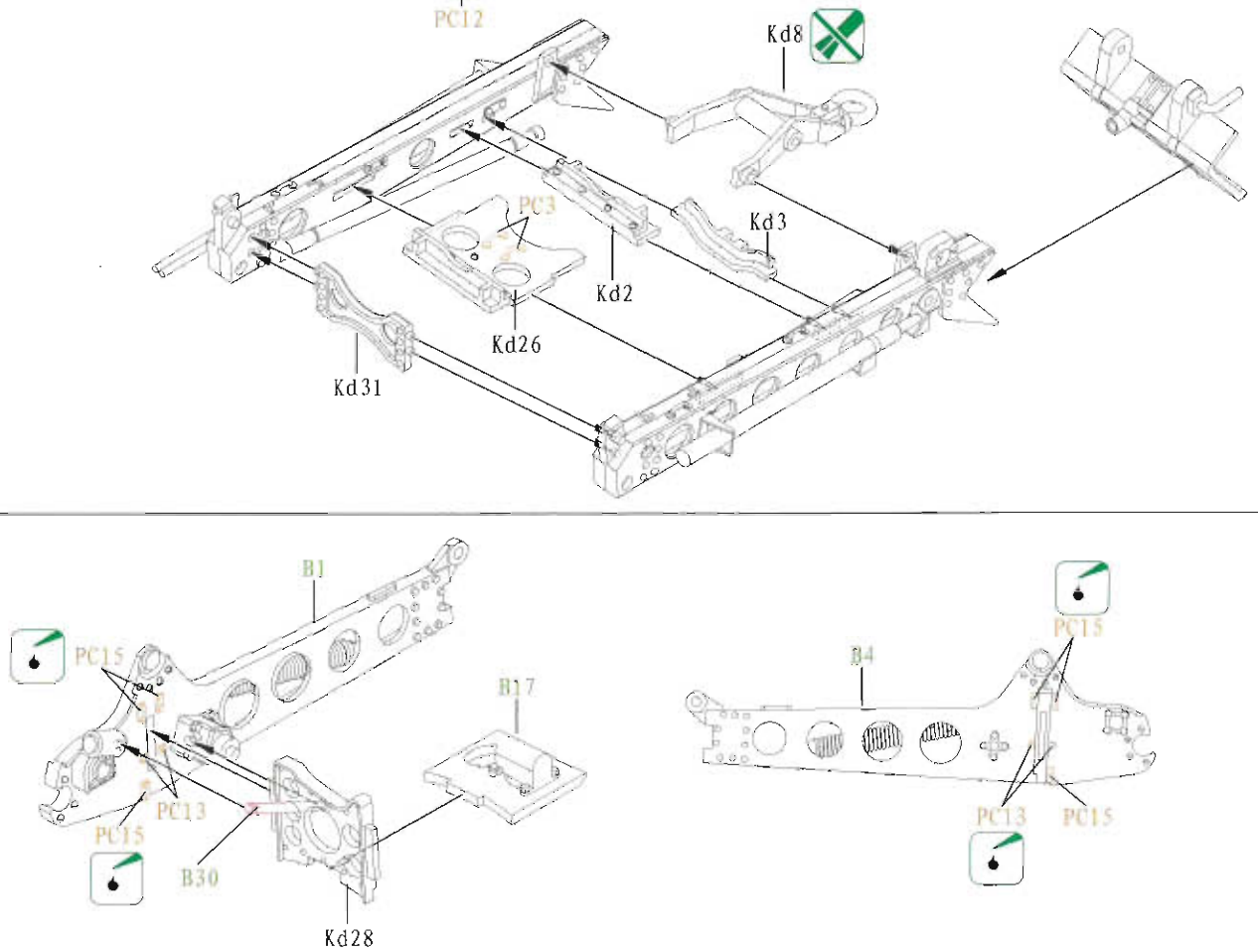


ILLUSTRATION 图示说明:

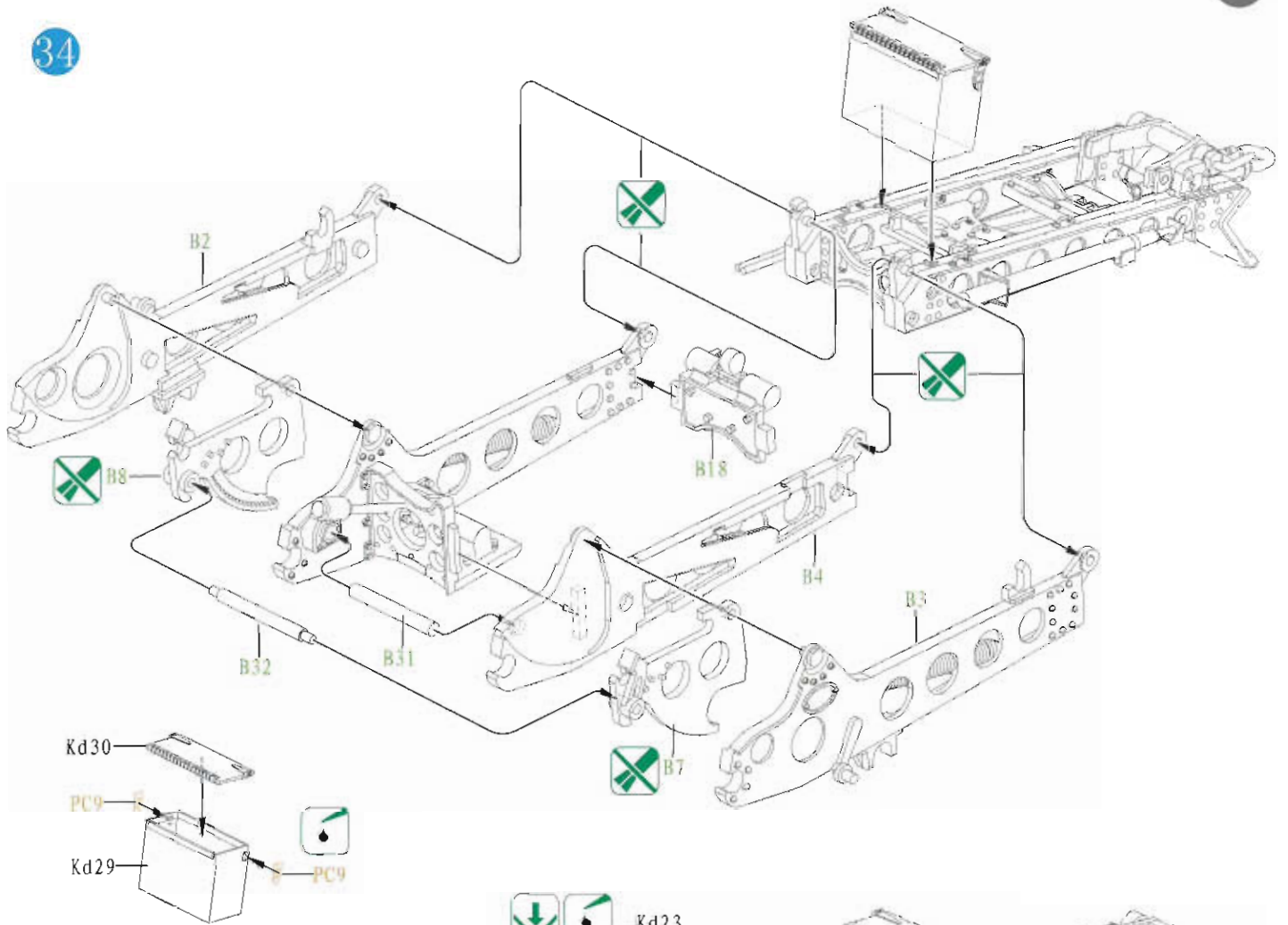
32



33



34



★ Caution: Make the wire from the plastic frame channel with the heat of fire.
 注意：制作电线用流道加热拉丝。

35

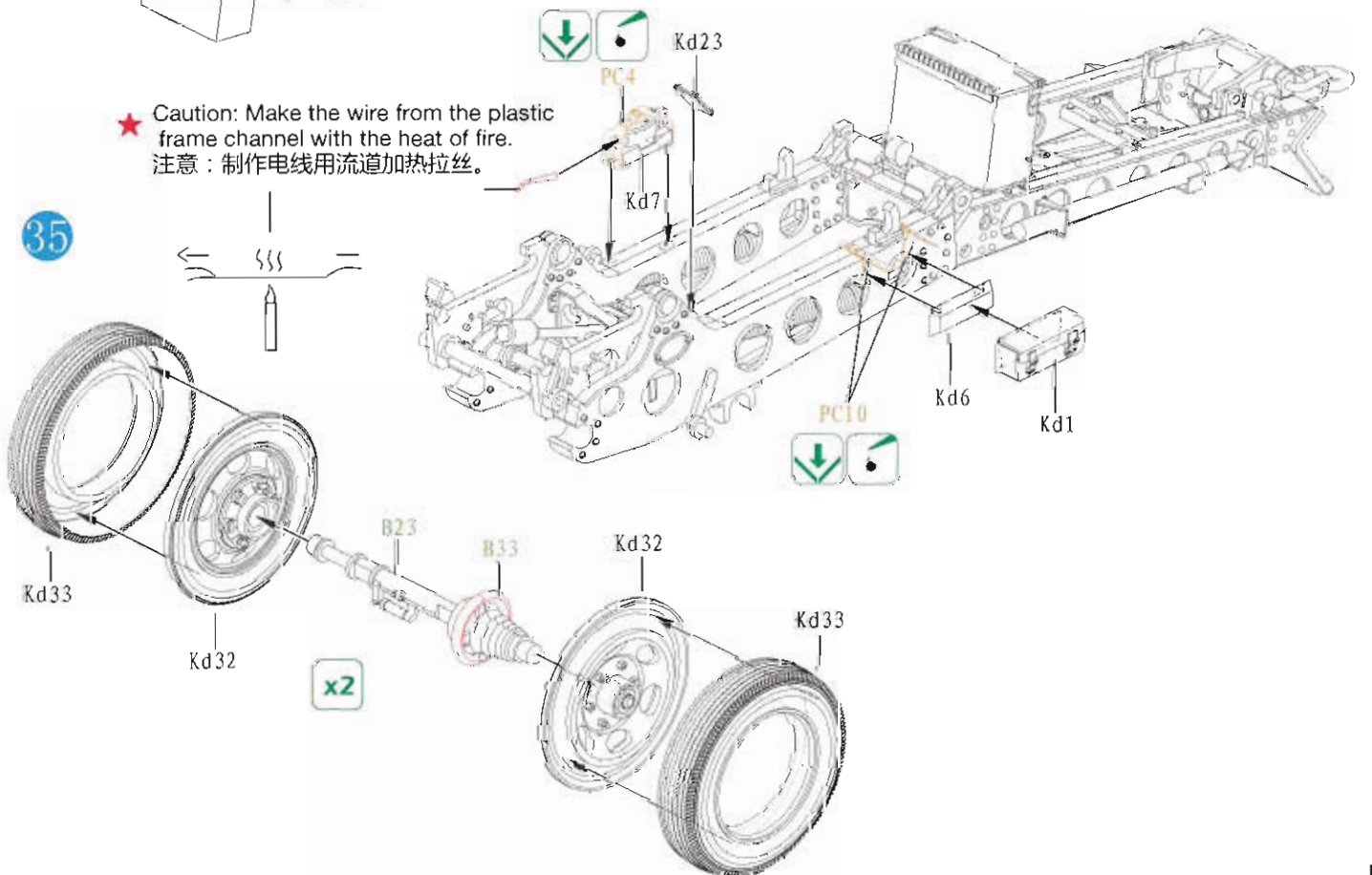
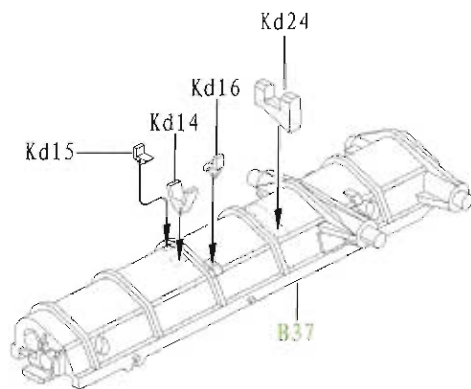
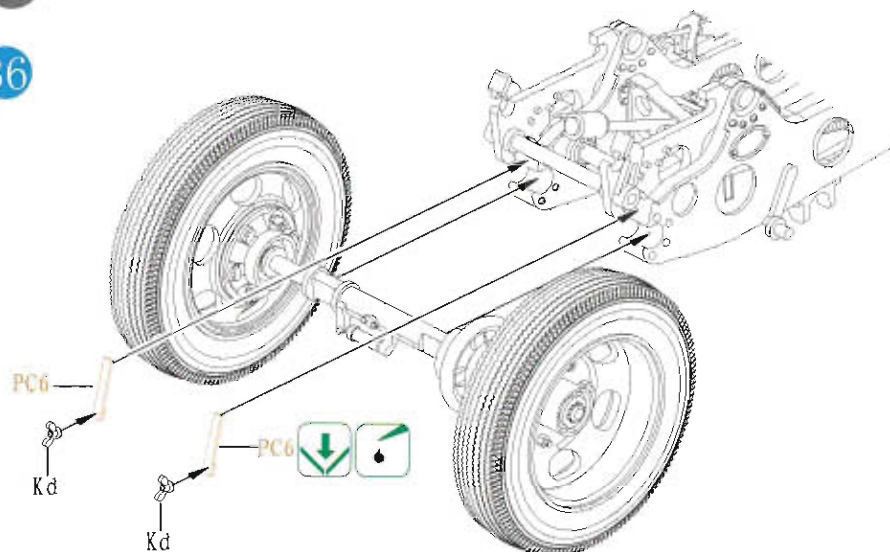
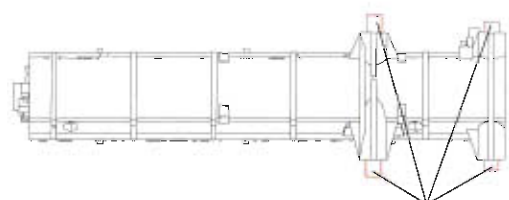
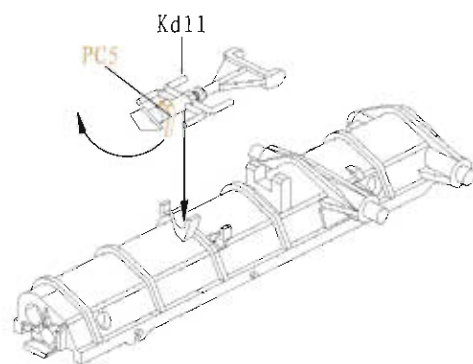
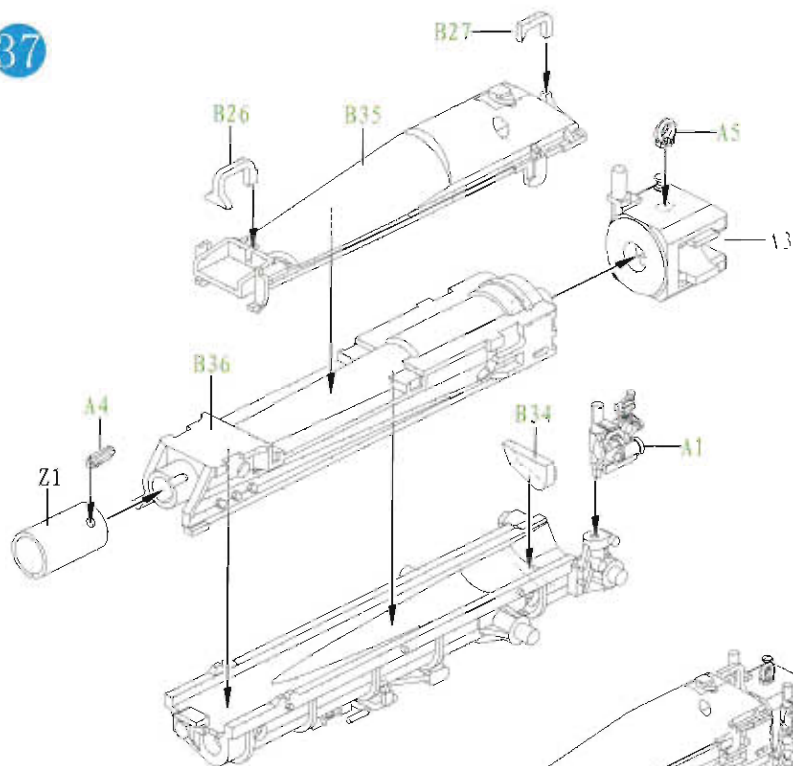


ILLUSTRATION 图示说明:

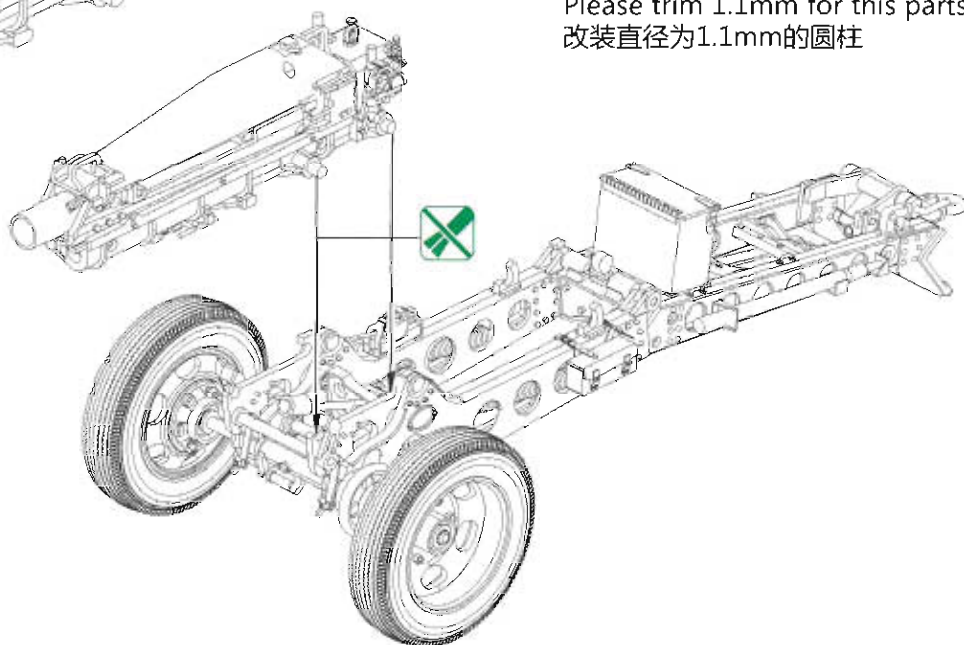
36

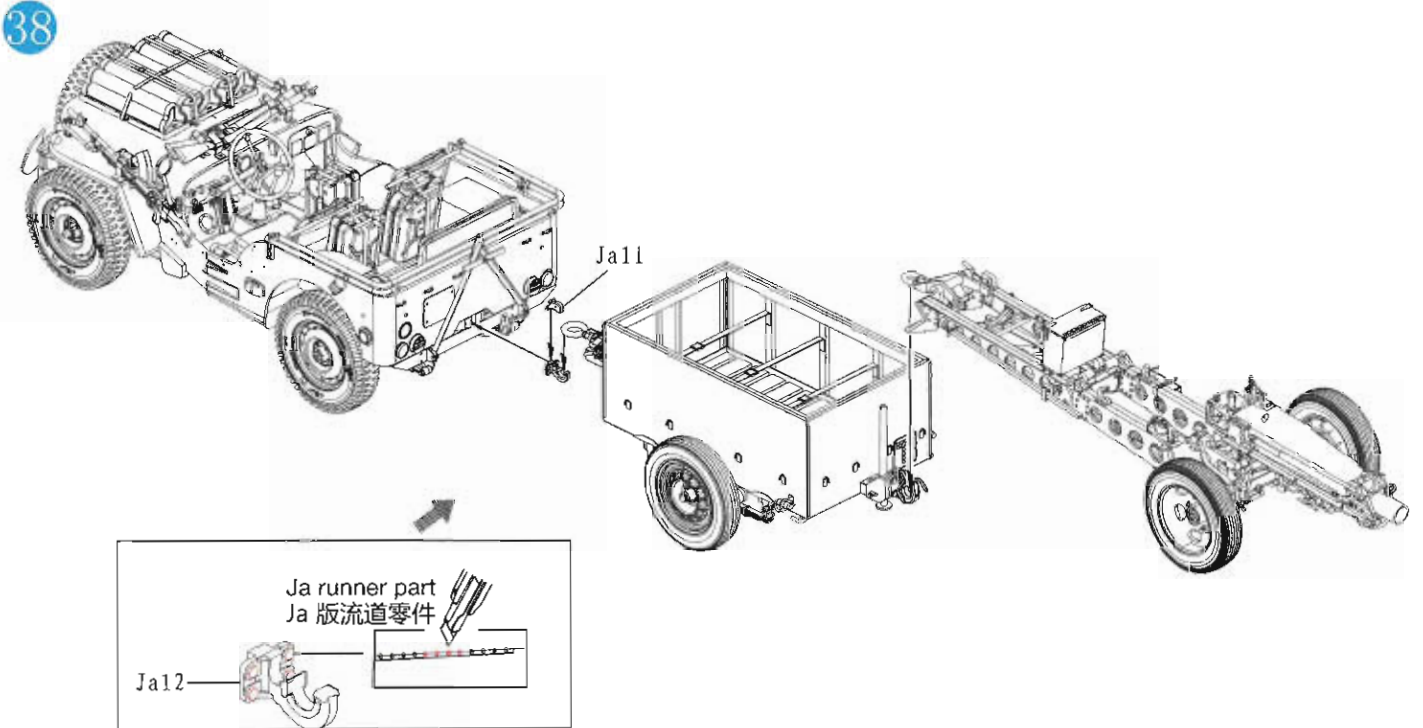


37

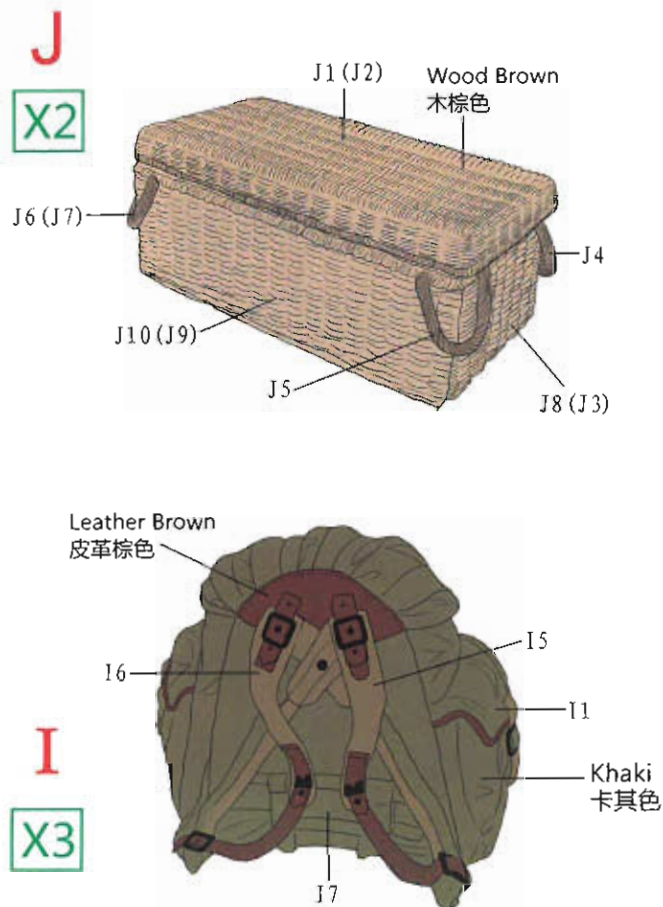


Please trim 1.1mm for this parts
改装直径为1.1mm的圆柱





DECAL & COLOUR GUIDE 水贴及涂色指示:

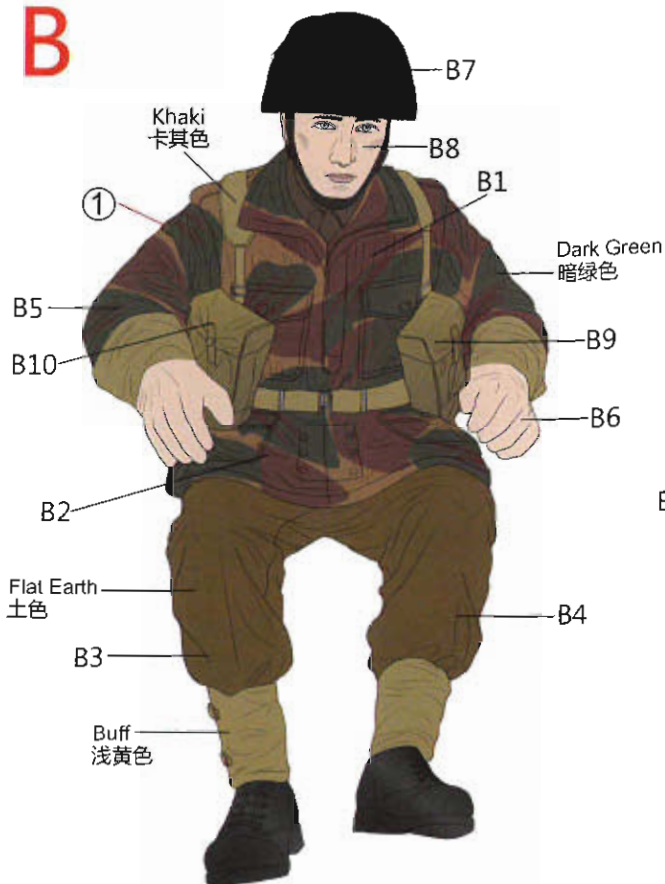


DECAL & COLOUR GUIDE 水贴及涂色指示:

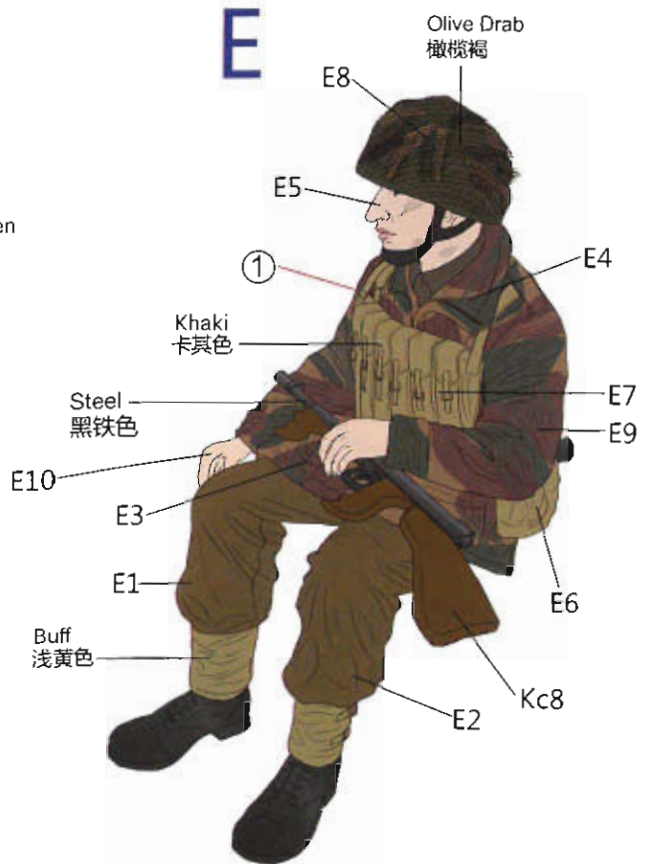
E



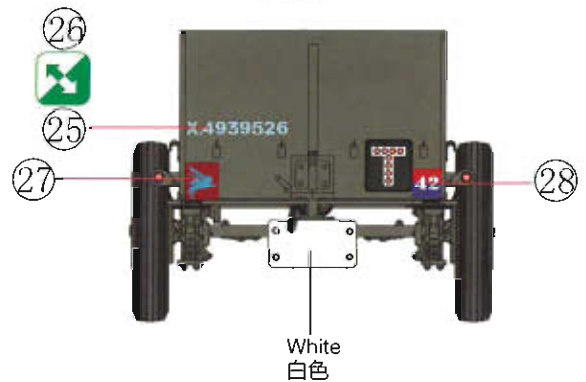
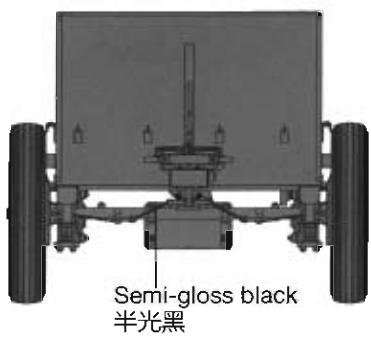
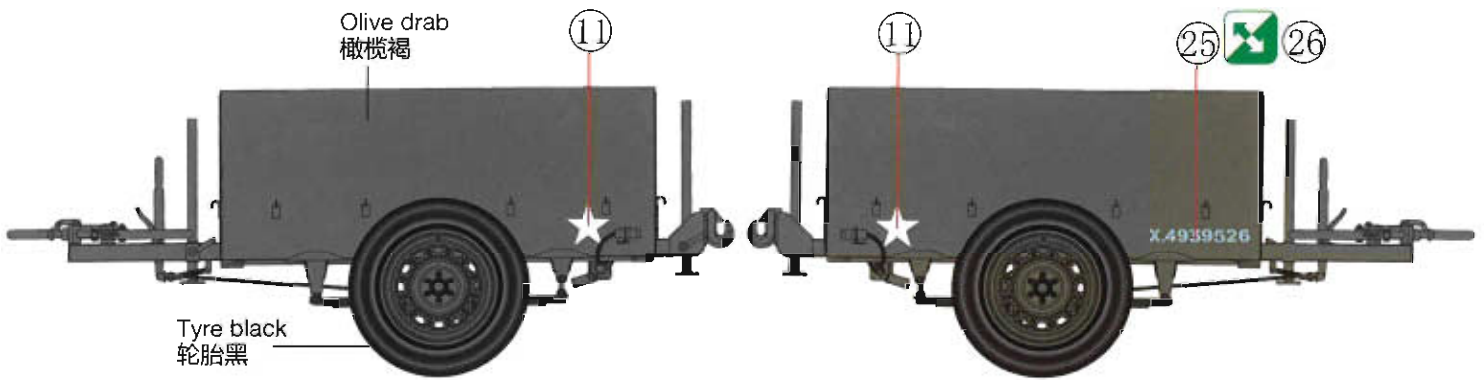
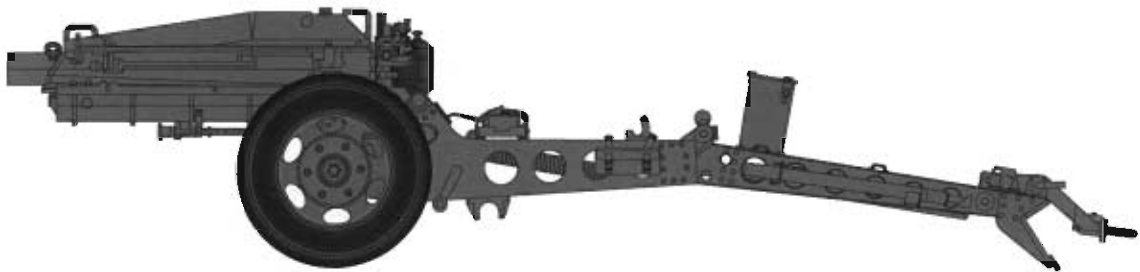
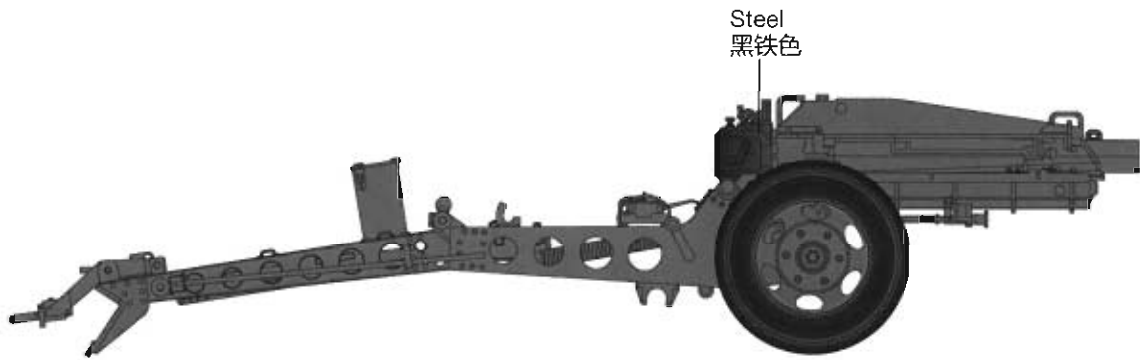
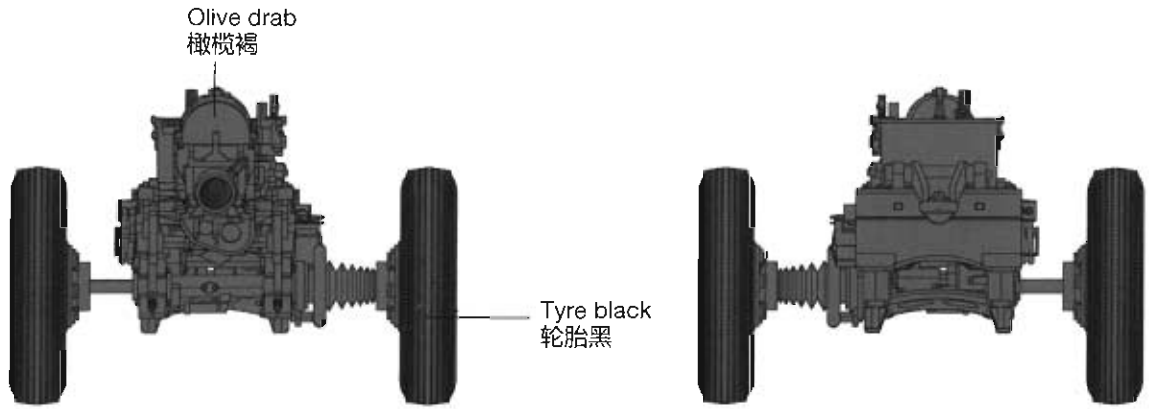
B



E

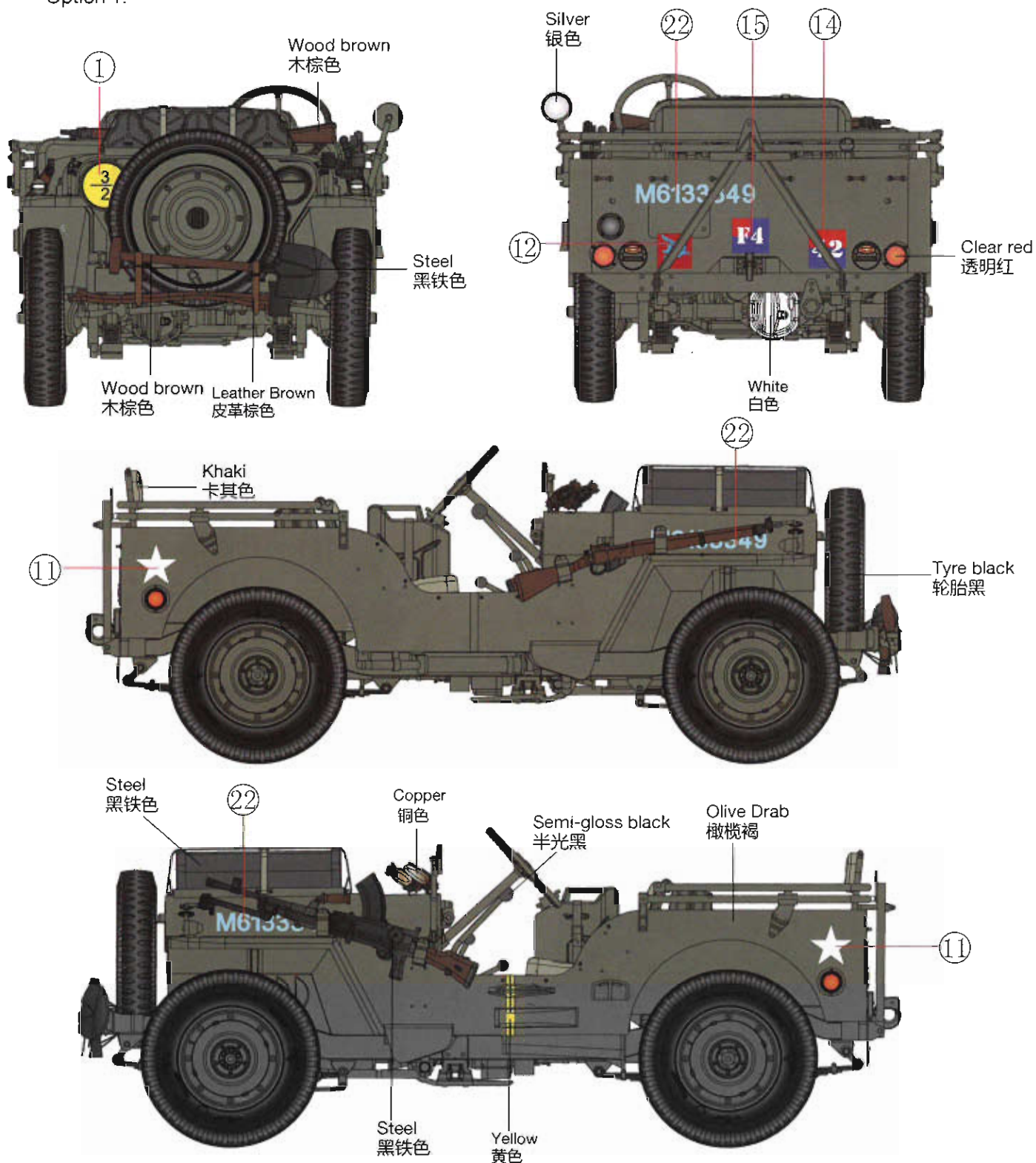


DECAL & COLOUR GUIDE 水贴及涂色指示:

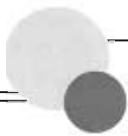


DECAL & COLOUR GUIDE 水贴及涂色指示:

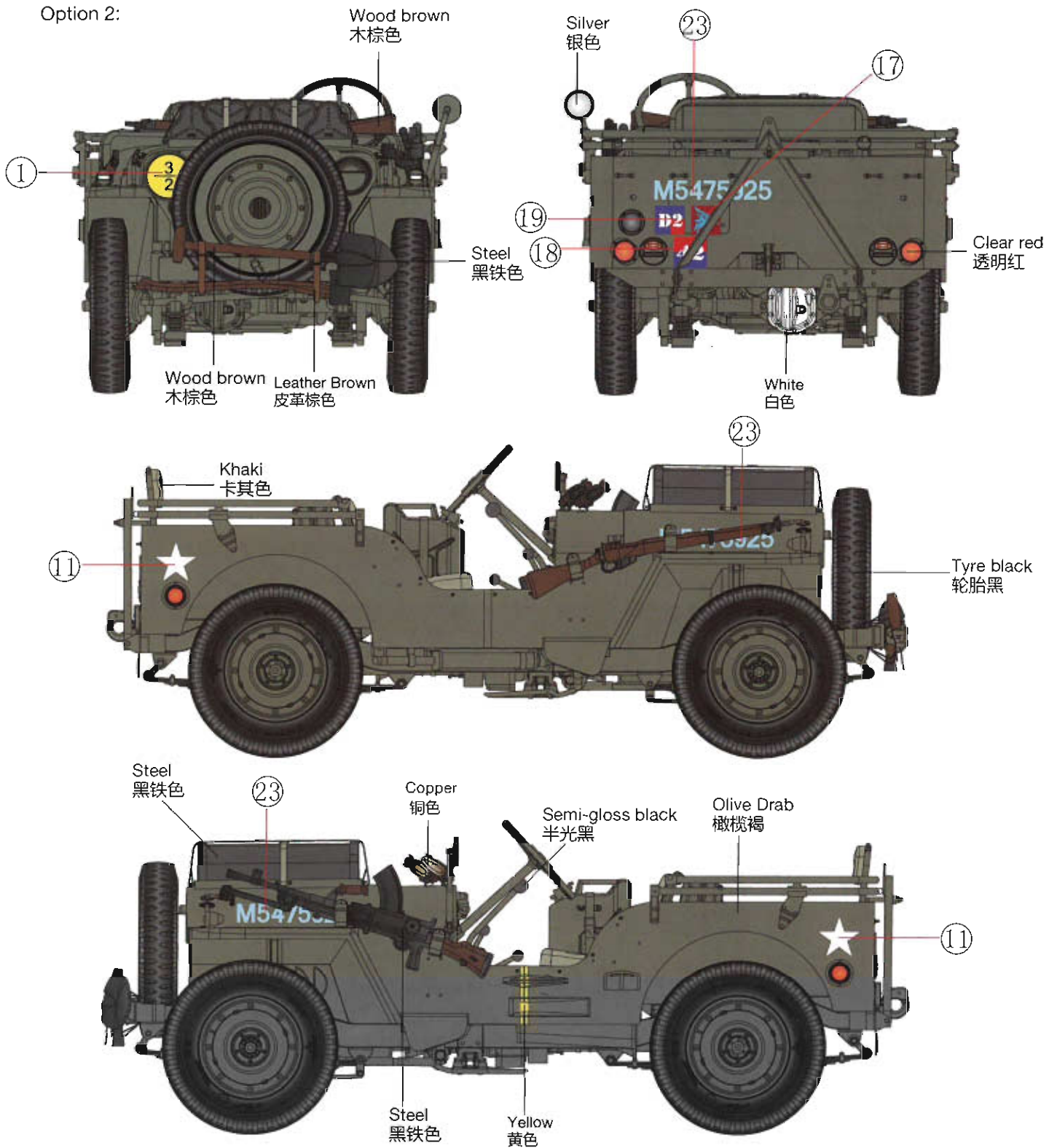
Option 1:



Gun No.4 of F Troop,3rd Battery ,1st Air Landing Light Regiment , Royal Artillery ,1st Airborne Division.






Option 2:



Gun No. 2 of D Troop, 211 Battery, 53rd (Worcester Yeomanry) Air Landing Light Regiment, Royal Artillery, 6th Airborne Division.

DECAL & COLOUR GUIDE 水貼及塗色指示:

| Marking | | Notes |
|-------------------------------------|---|---|
| Divisional Sign |  | Used by both the 1 st and 6 th Airborne Divisions |
| Arm of Service Square and Unit Code |  | Used by 1st Air Landing Light Regiment, Royal Artillery within 1 st Airborne Division. This unit had three batteries, each composed of two troops of four guns each : 1 Battery = A and B troops 2 Battery = C and D troops 3 Battery = E and F troops |
| Arm of Service Square and Unit Code |  | Used by 53rd (Worcester Yeomanry) Air Landing Light Regiment, Royal Artillery within 6th Airborne Division. This unit had three batteries, each composed of two troops of four guns each : 210 Battery = A and B troops 211 Battery = C and D troops 212 Battery = E and F troops |
| Arm of Service Square and Unit Code |  | Divisional Headquarters sign sometimes also seen on artillery assets attached to Divisional Headquarters |
| Royal Artillery Tactical Marking |  | Red quadrant top right = 1 Battery (also 210 Battery) Red quadrant bottom right = 2 Battery (also 211 Battery) Red quadrant bottom left = 3 Battery (also 212 Battery) Red quadrant top left = 4 Battery (if present) (Note that troop/gun identifier was superimposed on this marking – see below) |
| Royal Artillery Tactical Marking |  | A1 represents Number 1 gun in A troop. In each A/L battery there were 2 troops using 75mm howitzers with 4 guns in each troop, so guns A1 to A4, B1 to B4, C1 to C4, D1 to D4, E1 to E4 and F1 to F4 would be identified. |

As always, consult your own references regarding the complex subject of markings as required .

★ Many thanks to Mr.Simon King for reference assistance.