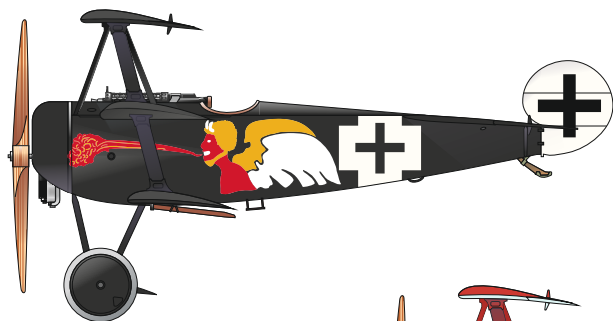


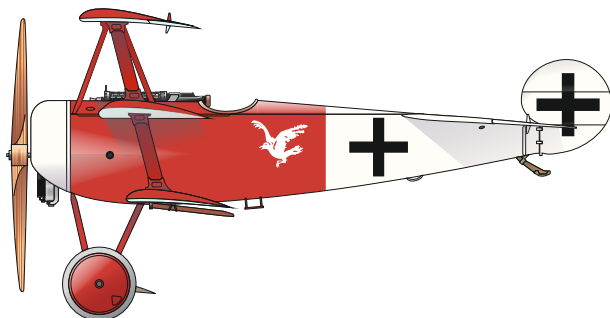
SCALE  
1/32

DIE ALTEN KANONEN

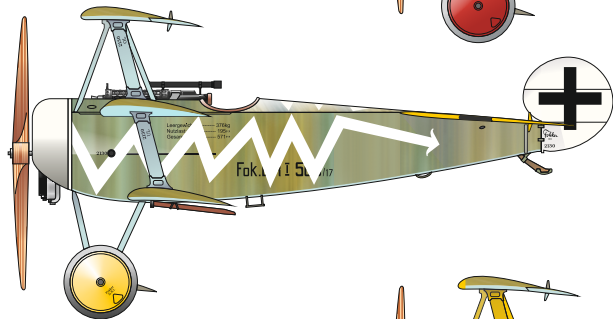
ITEM #  
D32007



Fokker Dr.I, 450/17, flown by  
Ltn. Josef Jacobs, Jasta 7, Rumbeke,  
Belgium, March 1918

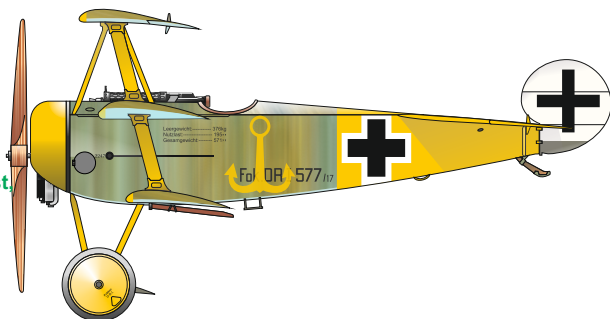


Fokker Dr.I, 479/17, flown by  
Ltn. August Raben, CO of Jasta 18,  
Montingen, France, October 1918



Fokker Dr.I, 503/17, flown by  
Ltn. Hans Körner, Jasta 19, Balatre,  
Belgium, April 1918

Fokker Dr.I, 557/17, flown by  
Ltn. Rudolf Klimke, Jasta 27, Halluin-Ost,  
France, May 1918



DESIGNED EXCLUSIVELY FOR FOKKER DR.I BY MENG



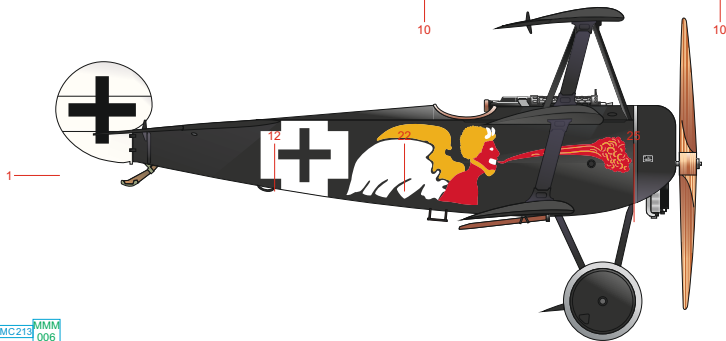
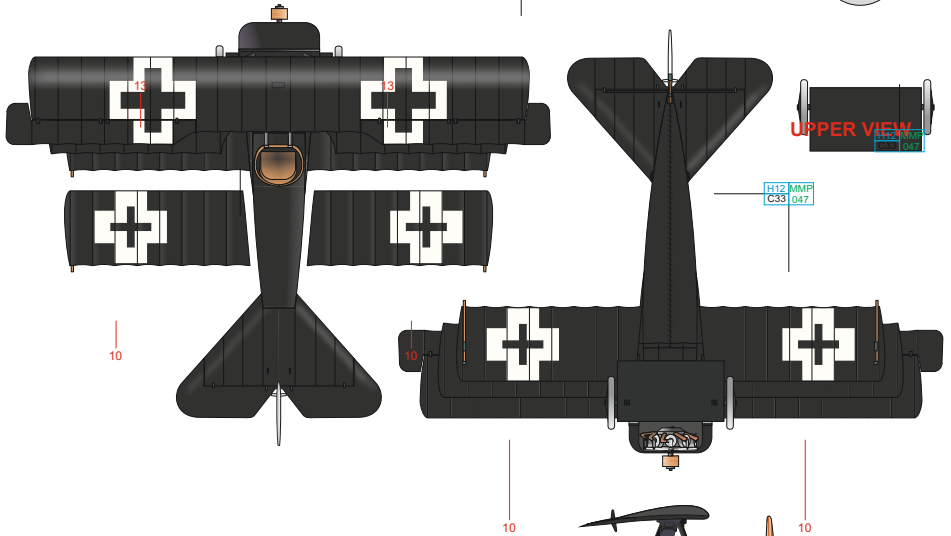
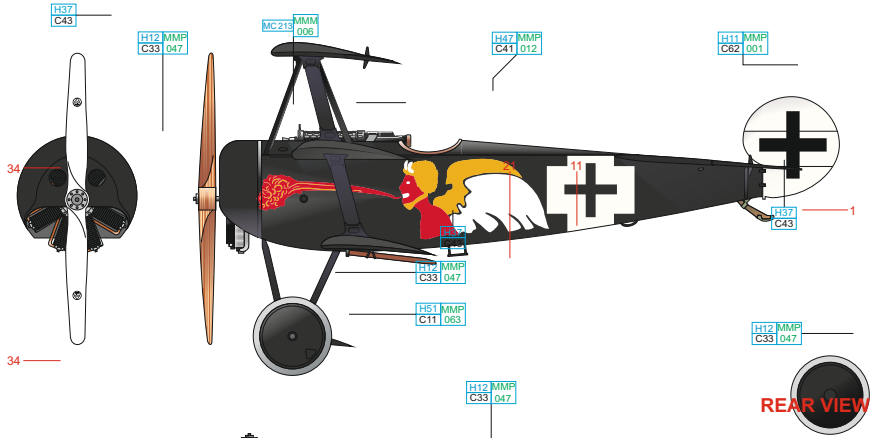
Eduard - Model Accessories, 435 21 Obrnice 170,  
Czech Republic

WWW.EDUARD.COM

D32007 Die alten Kanonen 1/32



8 591437 4556113



STEEL MC213 MMM 006

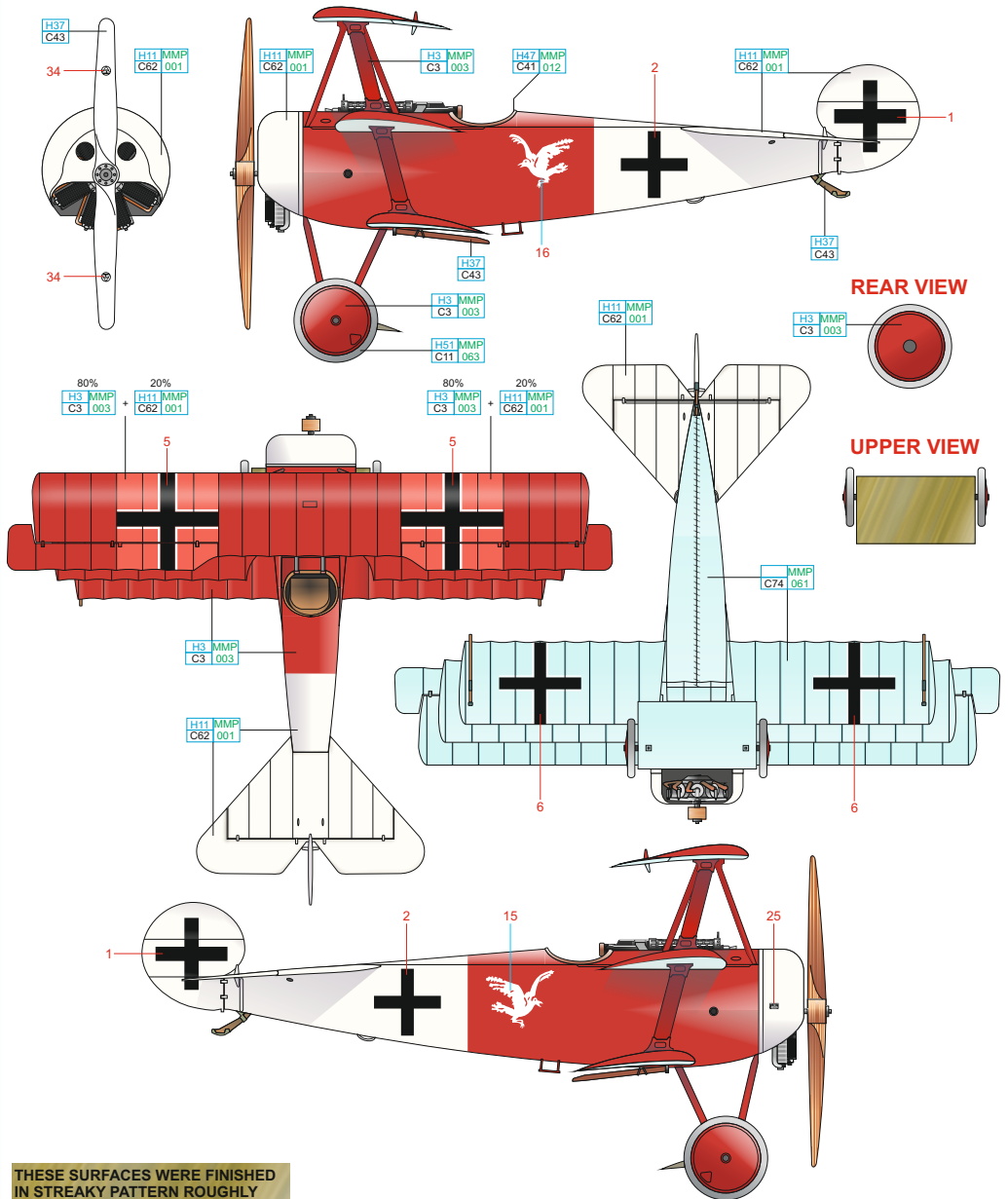
FLAT BLACK H12 MMP C33 047

WHITE H11 MMP C62 001

LIGHT GULL GRAY H51 MMP C11 063

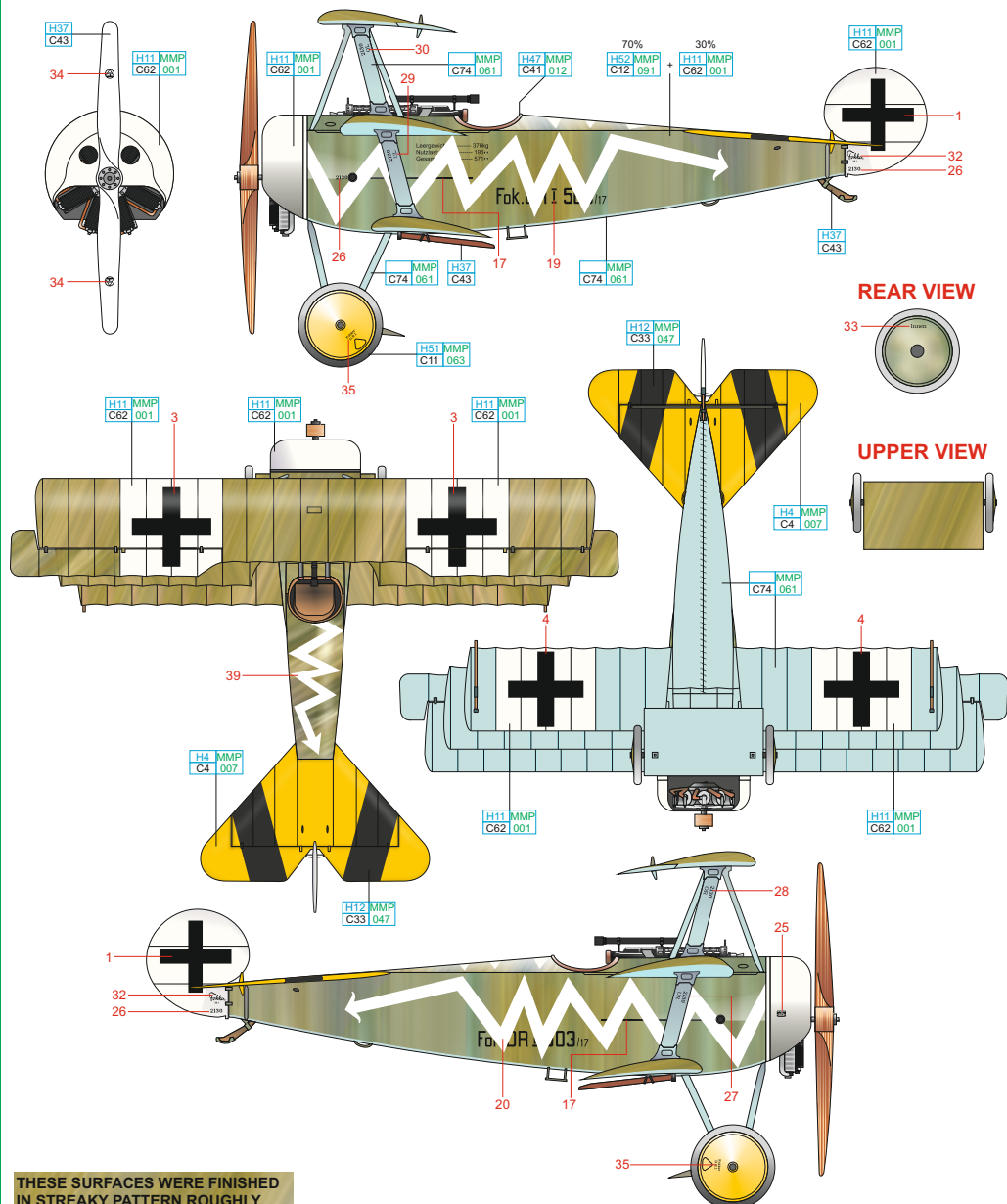
RED BROWN H47 MMP C41 012

WOOD BROWN H37 C43



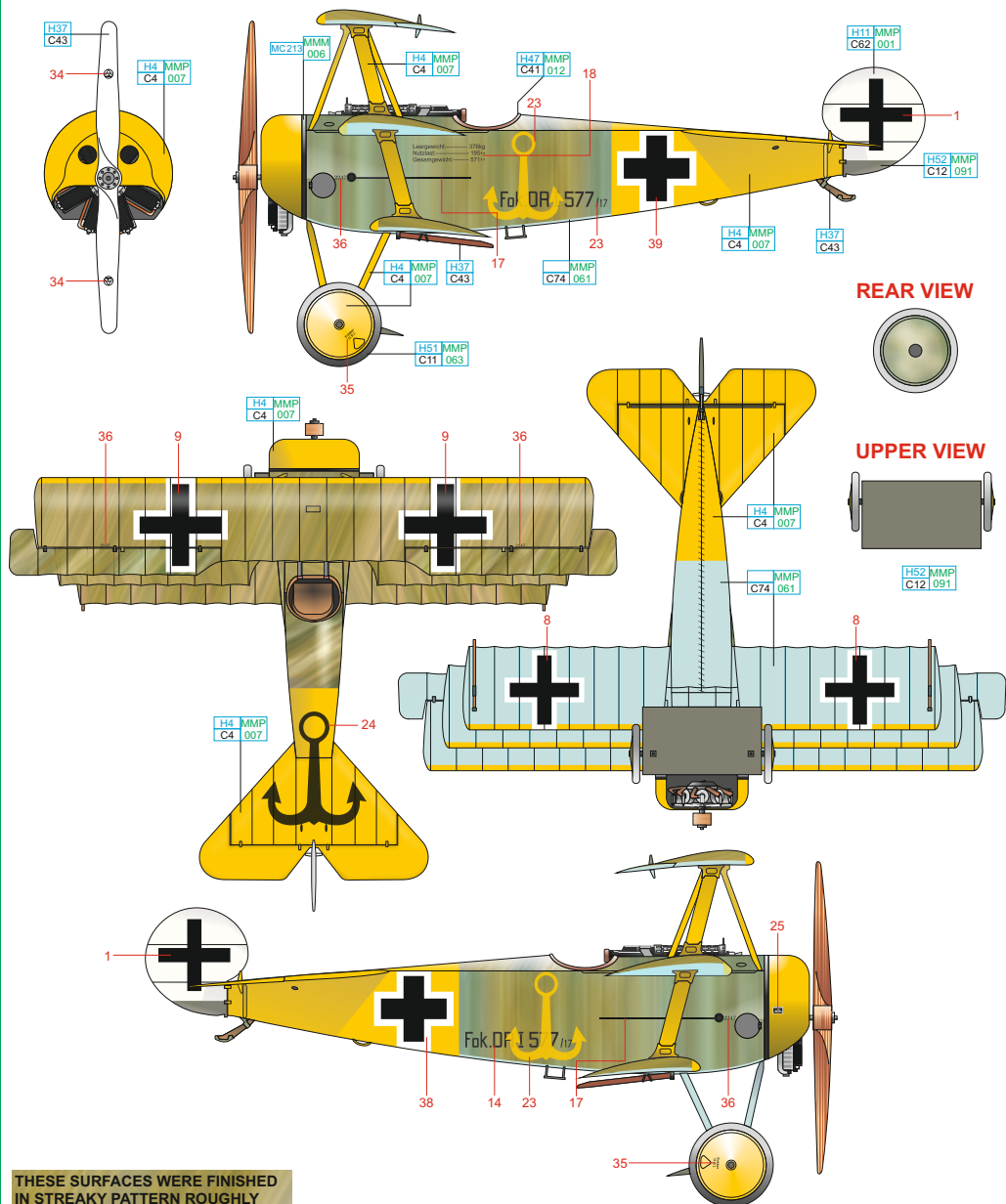
THESE SURFACES WERE FINISHED IN STREAKY PATTERN ROUGHLY BRUSHED OVER THE NATURAL LINEN COVER. FOUR MAIN PIGMENTS WERE USED: VERY DARK BROWN, VIOLET, LIGHTENED AZURE BLUE AND MEDIUM GREEN

WHITE	H11 MMP C62 001	RED	H3 MMP C3 003	LIGHT BLUE	MMP C74 061
LIGHT GULL GRAY	H51 MMP C11 063	RED BROWN	H47 MMP C41 012	WOOD BROWN	H37 C43



THESE SURFACES WERE FINISHED IN STREAKY PATTERN ROUGHLY BRUSHED OVER THE NATURAL LINEN COVER. FOUR MAIN PIGMENTS WERE USED: VERY DARK BROWN, VIOLET, LIGHTENED AZURE BLUE AND MEDIUM GREEN

LIGHT BLUE	H11 MMP C62 001	YELLOW	H4 MMP C4 007	FLAT BLACK	H12 MMP C33 047	WOOD BROWN	H37 C43
WHITE	H11 MMP C62 001	LIGHT GULL GRAY	H51 MMP C11 063	RED BROWN	H47 MMP C41 012	OLIVE DRAB	H52 MMP C12 091



REAR VIEW

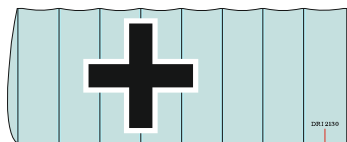
UPPER VIEW

THESE SURFACES WERE FINISHED IN STREAKY PATTERN ROUGHLY BRUSHED OVER THE NATURAL LINEN COVER. FOUR MAIN PIGMENTS WERE USED: VERY DARK BROWN, VIOLET, LIGHTENED AZURE BLUE AND MEDIUM GREEN

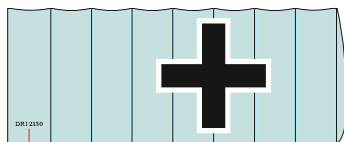
LIGHT BLUE	H11 MMP C62 001	YELLOW	H4 MMP C4 007	OLIVE GREEN	H52 MMP C12 091	STEEL	MC213 MMM 006
WHITE	H11 MMP C62 001	LIGHT GULL GRAY	H51 MMP C11 063	RED BROWN	H47 MMP C41 012	WOOD BROWN	H37 C43

decal No.31 for Fokker Dr. I 503/17

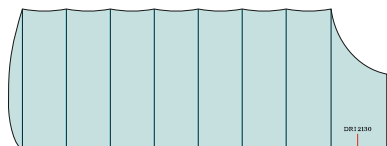
decal No.37 for Fokker Dr.I 577/17



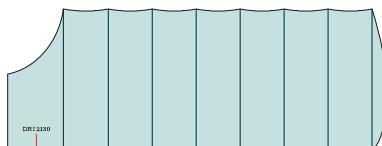
31?37



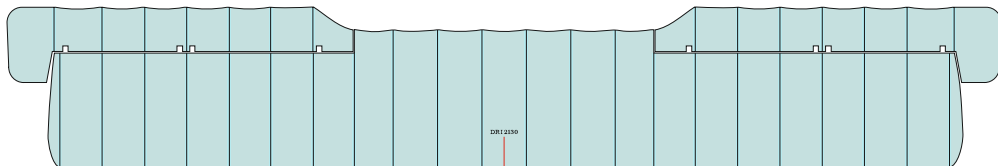
31?37



31?37



31?37



31?37