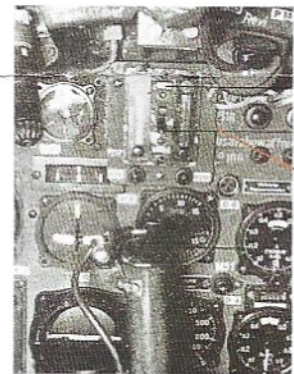


 Bend  Scratch Build

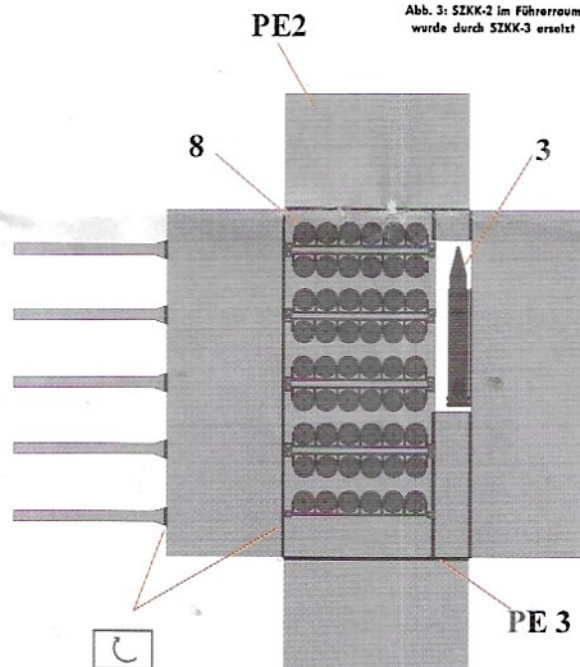
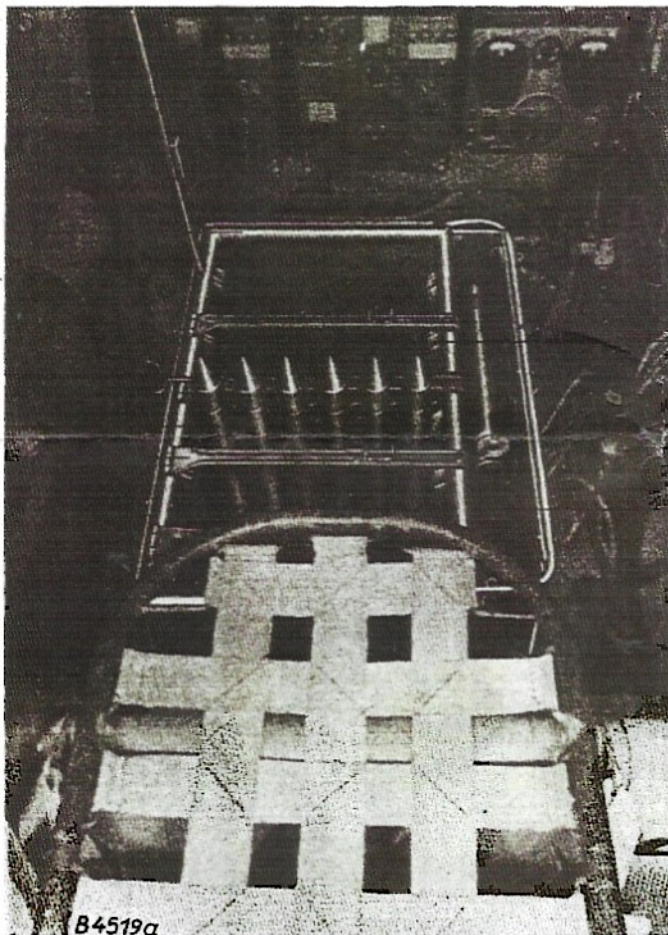
- 1 More detailed gondola replaces kits
2. GM boost tank for M8+KM only (disclaimer - no photo of this part - only drawing of similar tank in bomb bay of Ju 88 and the measurements available in the back of the Bf 110 to go on meaning no gunner or defensive weapons)
3. Shell clip to fit into PE 2 cut out
4. Metal weapon boot (used on Eastern Front)
5. Leather weapon boot
6. Short ejector chute
7. Long ejector chute
8. Shell clip x6
9. Shatton Bau turn brass BK 37

10 clips of shells are placed back to back - their clips touching, the arms of PE 2 are the locking clamp that hinges over the clips on top of the backing plates. There is a gap at each end before the shells and a gap in between them. The rear most clip under the rim of the seat is pre-loaded.

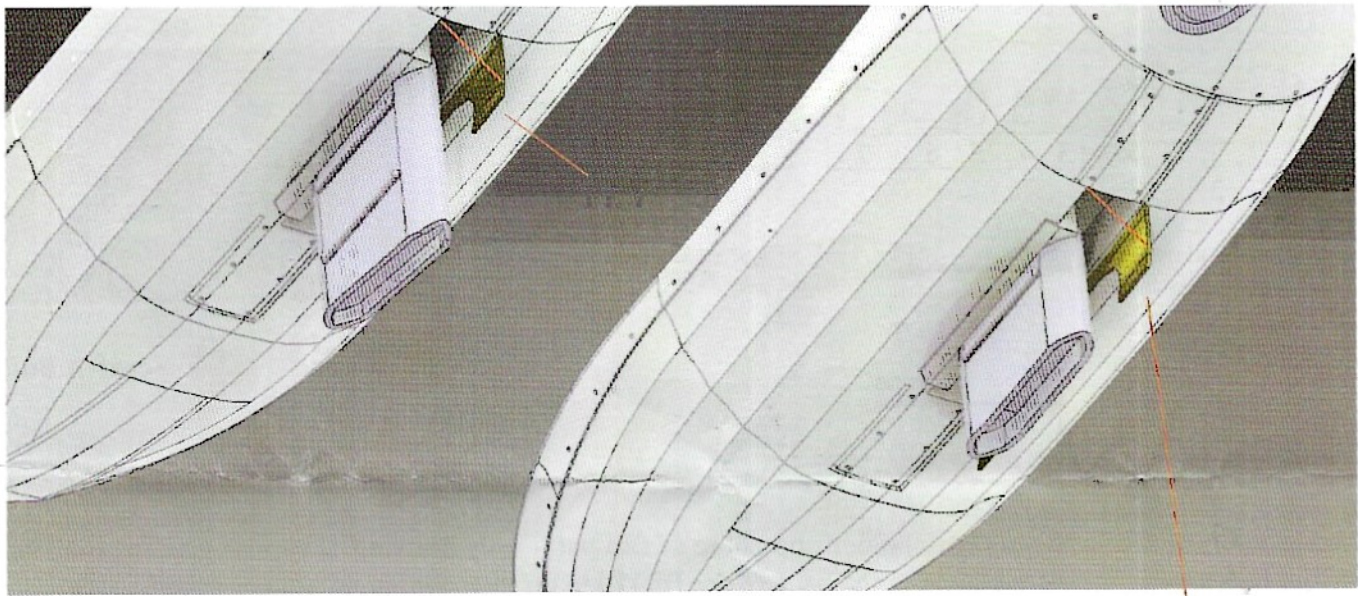



1 SZKK-2  
2 Sicherungsschalter  
3 B-Koepf

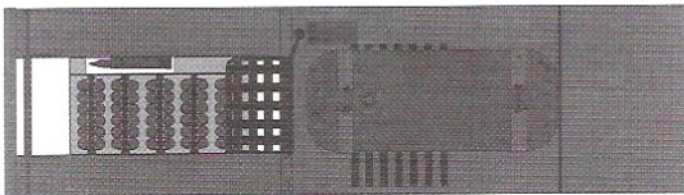
Abb. 3: SZKK-2 im Führerraum wurde durch SZKK-3 ersetzt





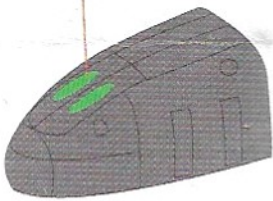


 SB cable if having PE 1 open

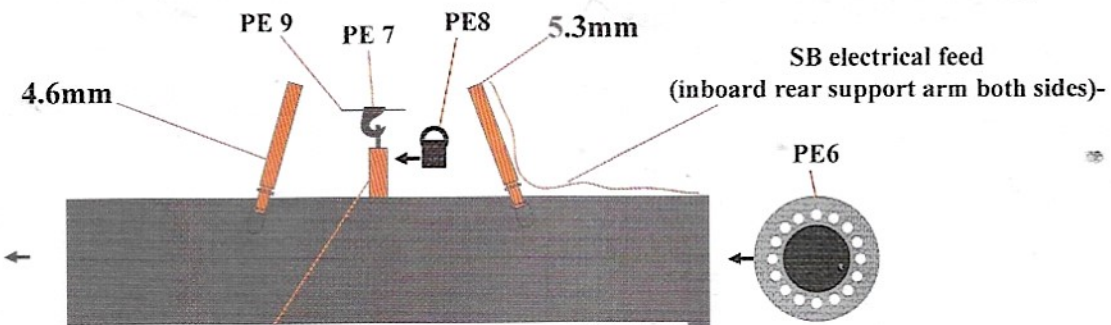
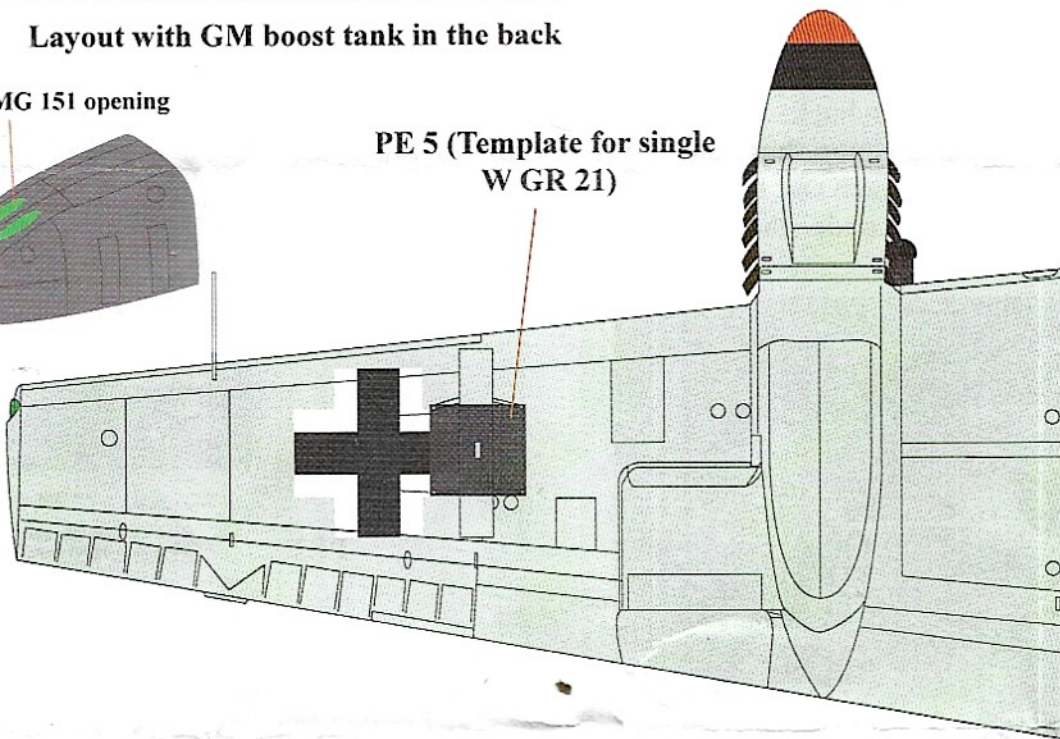


Layout with GM boost tank in the back

fill MG 151 opening



PE 5 (Template for single W GR 21)



SB centre support 0.5mm round rod - 1.3 mm high approx. make cut in top for PE 8