

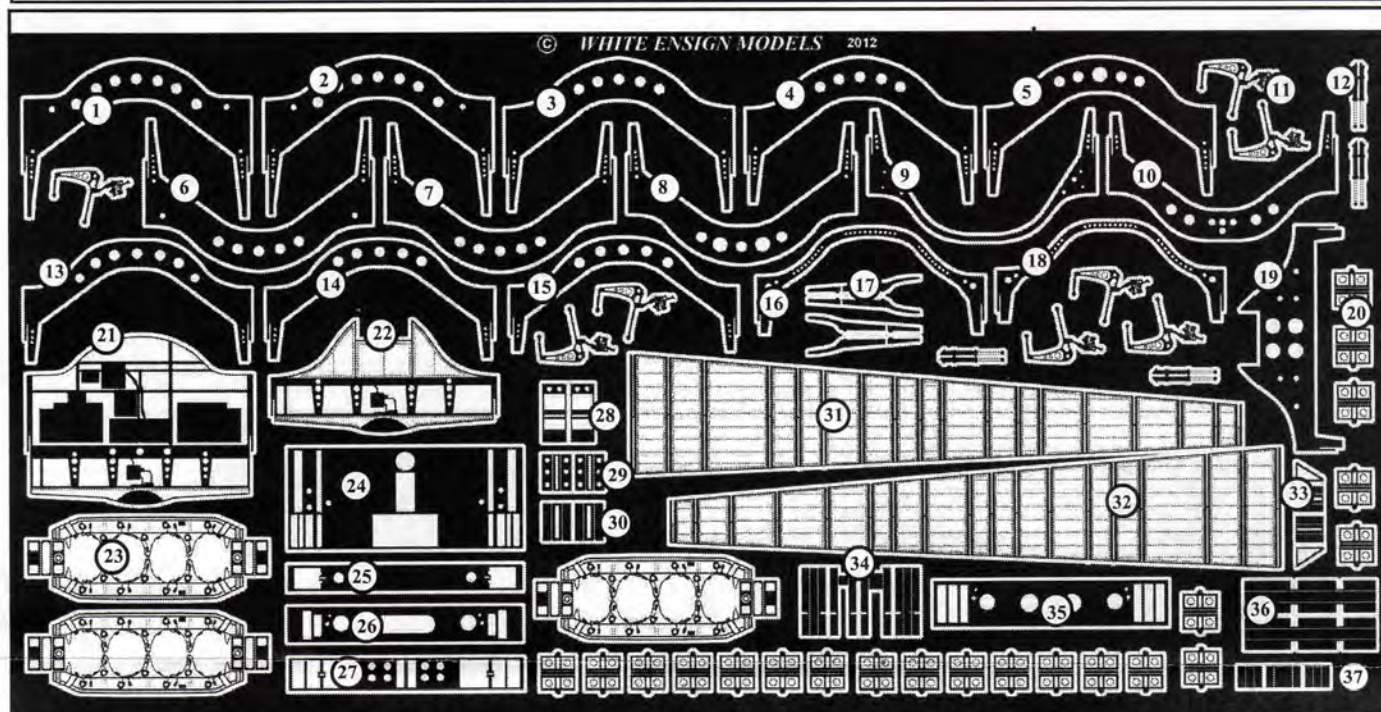


WHITE ENSIGN MODELS

Avro Vulcan B2

Photoetched Parts for detailing the Bomb Bay of the Airfix kit in 1/72 Scale

Parts List



1. Bomb Arch 1	11. Bomb Door Actuators	21. Bomb Bay Forward Bulkhead	31. Bomb Bay Right Side Wall
2. Bomb Arch 2	12. Bomb Door Hydraulic Jacks	22. Bomb Bay Rear Bulkhead	32. Bomb Bay Left Side Wall
3. Bomb Arch 4	13. Bomb Arch 11	23. Bomb Carrier Bridge Unit	33. First Set Longerons
4. Bomb Arch 6	14. Bomb Arch 12	24. First Bomb Arch Plate	34. Third Set Longerons
5. Bomb Arch 8	15. Bomb Arch 13	25. Second Bomb Arch Plate	35. Sixth Bomb Arch Plate
6. Bomb Arch 3	16. Bomb Arch 14	26. Third Bomb Arch Plate	36. Fifth Set Longerons
7. Bomb Arch 5	17. Bomb Door Actuator Attachments	27. Fifth Bomb Arch Plate	37. Fourth Set Longerons
8. Bomb Arch 7	18. Bomb Arch 15	28. Fourth Bomb Arch Plates	
9. Bomb Arch 9	19. Bomb Arch 16	29. Second Set Longerons	
10. Bomb Arch 10	20. Bomb Carriers	30. Second Set Longerons	

Photo Etched Parts General Instructions

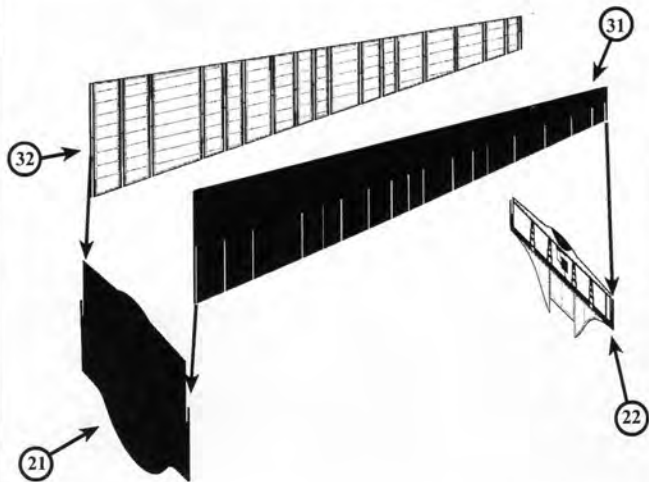
- Do not remove the etched parts from the fret until you are ready to use them.
- Before assembly, soak the etched parts in a suitable solvent, such as white spirit, to de-grease the surfaces for painting.
- Cyanoacrylate adhesive (super glue) or contact adhesive such as Elmers white glue may be used. These can be applied with a pin or piece of stretched sprue.
- When removing parts from the fret, place the fret on a hard surface, such as a smooth ceramic tile, in order to prevent parts bending whilst cutting through the holding tabs. It is suggested that a #11 type of modelling knife blade is used for this purpose.
- When shaping or bending a part, a straight edged blade such as a chisel blade #17 or #18 will give a good sharp corner, or alternatively a small pair of smooth jawed pliers may be used.
- If a part is bent incorrectly, lay it on a hard flat surface and roll it flat with a cylindrical object such as a modelling knife handle.

© WHITE ENSIGN MODELS LTD. 2012

8532 Lamar drive, Huntington Beach, CA 92647 USA

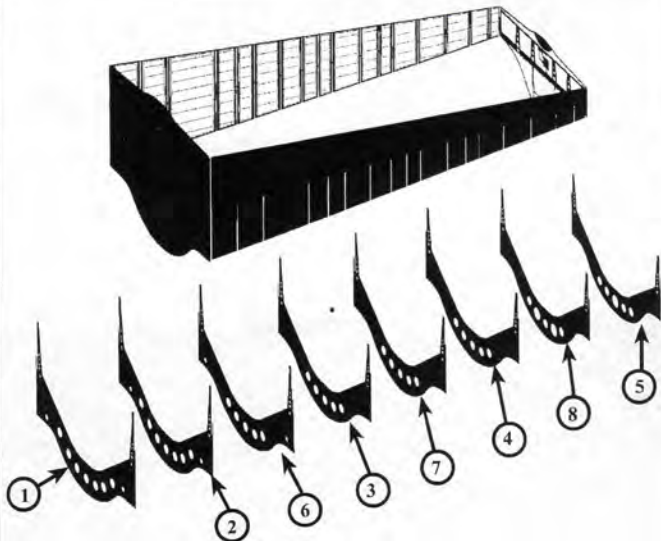
Email: whiteensignmodels@aol.com website: <https://www.whiteensignmodels.com>

Bomb Bay Compartment Assembly



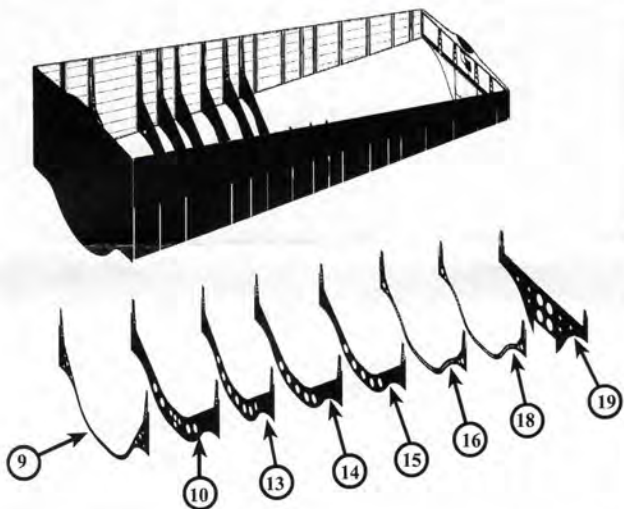
Assemble the bomb bay compartment by slotting the forward edges of the side walls, etched parts 31 & 32 onto the outer edges of the front bulkhead etched part 21. Then repeat with the rear edges of the side walls onto the outer edges of the rear bulkhead, etched part 22. Secure the joints into place with super glue.

Forward Bomb Arch Location



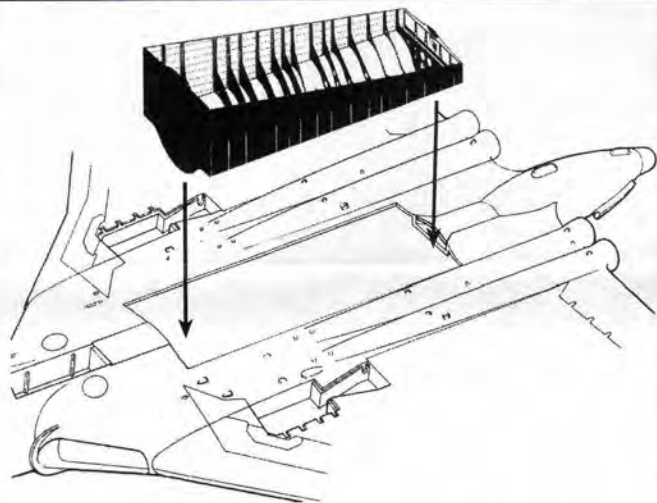
Fit the bomb arches into place by sliding them down the slots in the side walls, ensuring that they correctly locate in directly-opposite slots. Start with bomb arch 1 in the forward pair of slots, and work to the rear with arches 2 to 8, etched parts located as shown in the diagram above. Unfortunately the etched part numbers may not correspond to the bomb arch number due to their location on the fret.

Rear Bomb Arch Location



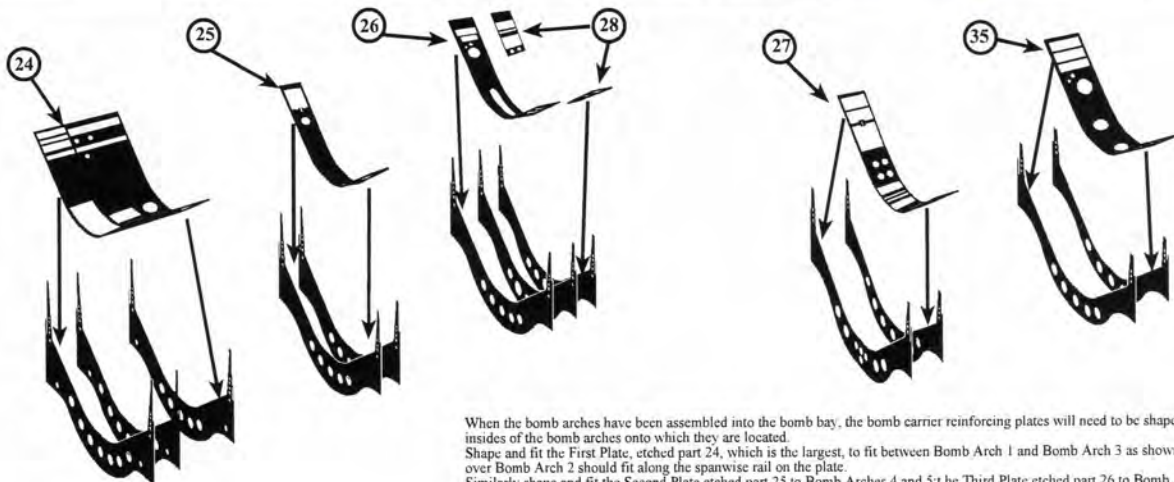
Fit the rear set of bomb arches into place in the same manner as that used to fit the forward set. Continue until all the bomb arches are fitted into place and secure into position. Again the etched part numbers do not correspond to the bomb arch number due to their locations on the fret. Ensure that the bomb arches are fitted in the order shown above.

Bomb Bay Assembly Location



The Airfix kit of the Vulcan has fortunately been left with a clean wide open space where the bomb bay fits. Fit the bomb bay compartment directly into the opening in the underside of the fuselage. This will be a very tight fit and may be better done before the two fuselage halves are assembled to ensure ease of fitting.

Bomb Carrier Unit Location Plates

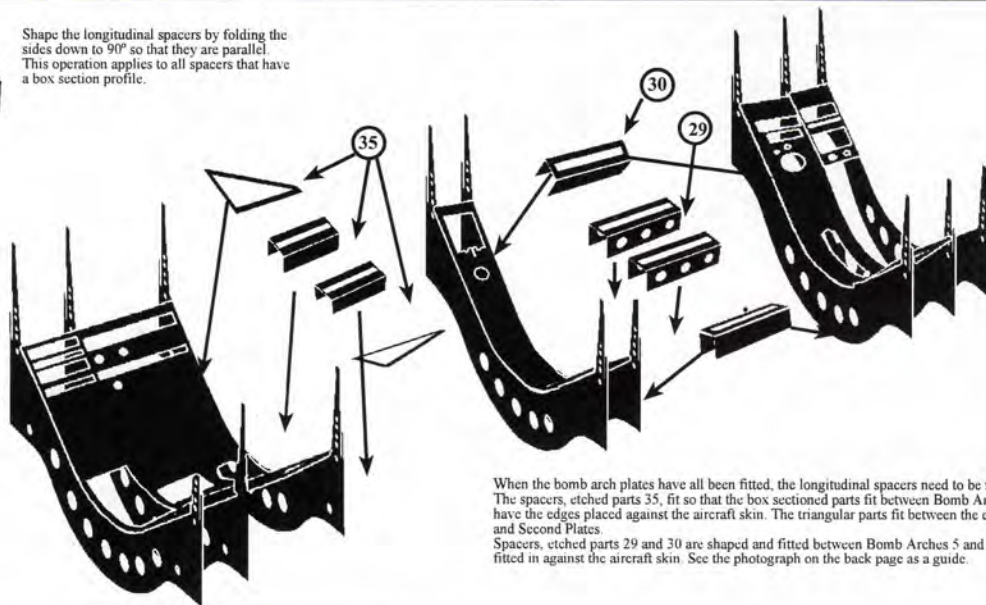


When the bomb arches have been assembled into the bomb bay, the bomb carrier reinforcing plates will need to be shaped to the contour of the insides of the bomb arches onto which they are located. Shape and fit the First Plate, etched part 24, which is the largest, to fit between Bomb Arch 1 and Bomb Arch 3 as shown left. The plate covers over Bomb Arch 2 should fit along the spanwise rail on the plate. Similarly shape and fit the Second Plate etched part 25 to Bomb Arches 4 and 5; the Third Plate etched part 26 to Bomb Arches 6 and 7 and the two outer plates, etched parts 28 between Bomb Arches 7 and 8. Then shape and fit the Fifth Plate, etched part 27, between Bomb Arches 9 and 10 and the Sixth Plate, etched part 35, between Bomb Arches 12 and 13.

Forward Longitudinal Braces

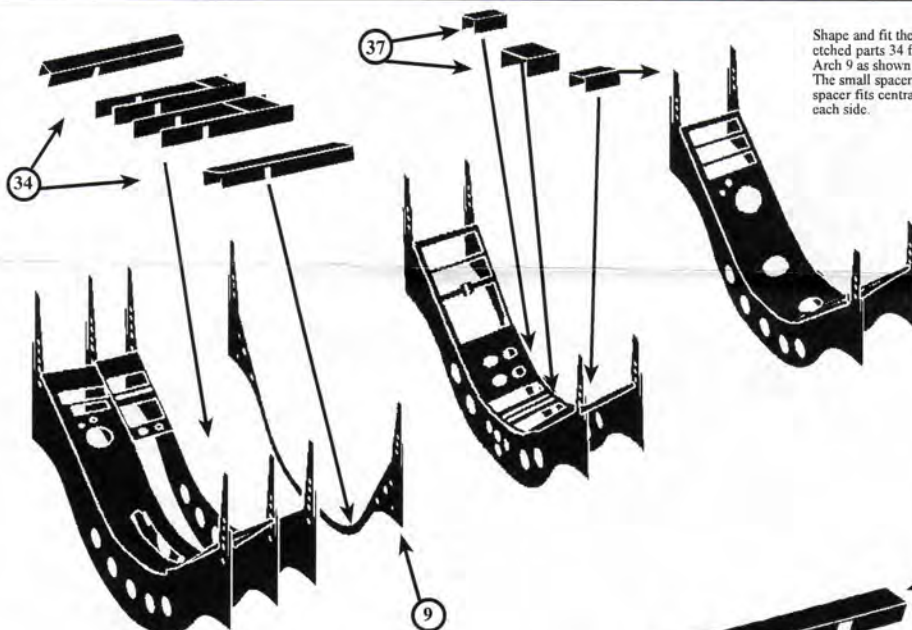


Shape the longitudinal spacers by folding the sides down to 90° so that they are parallel. This operation applies to all spacers that have a box section profile.



When the bomb arch plates have all been fitted, the longitudinal spacers need to be fitted into place. The spacers, etched parts 35, fit so that the box sectioned parts fit between Bomb Arches 3 and 4 and have the edges placed against the aircraft skin. The triangular parts fit between the edges of the First and Second Plates. Spacers, etched parts 29 and 30 are shaped and fitted between Bomb Arches 5 and 6, and again are fitted in against the aircraft skin. See the photograph on the back page as a guide.

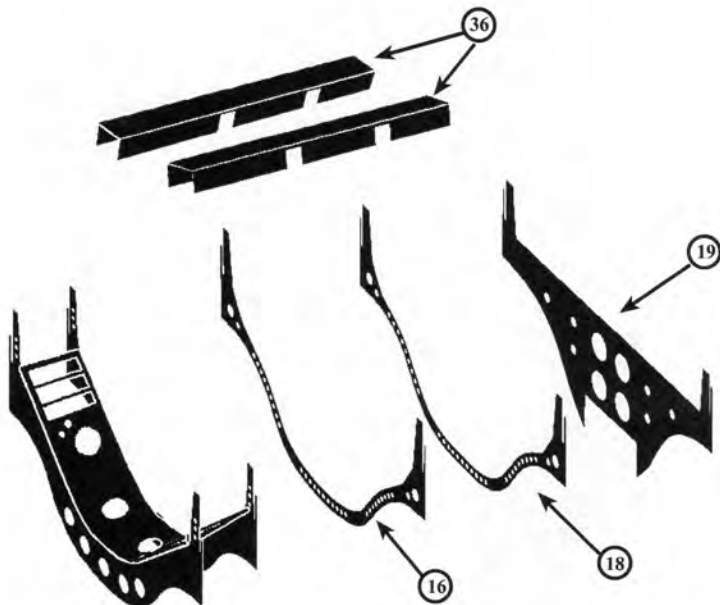
Mid Section and Rear Longitudinal Braces



Shape and fit the box-sectioned spacers as previously described, with the spacer etched parts 34 fitting between Bomb Arches 8 and 10, and slotting over Bomb Arch 9 as shown above. The small spacers, etched parts 37 fit between Bomb Arches 11 and 12. The larger spacer fits centrally against the aircraft's skin, with the two smaller spacers on each side.

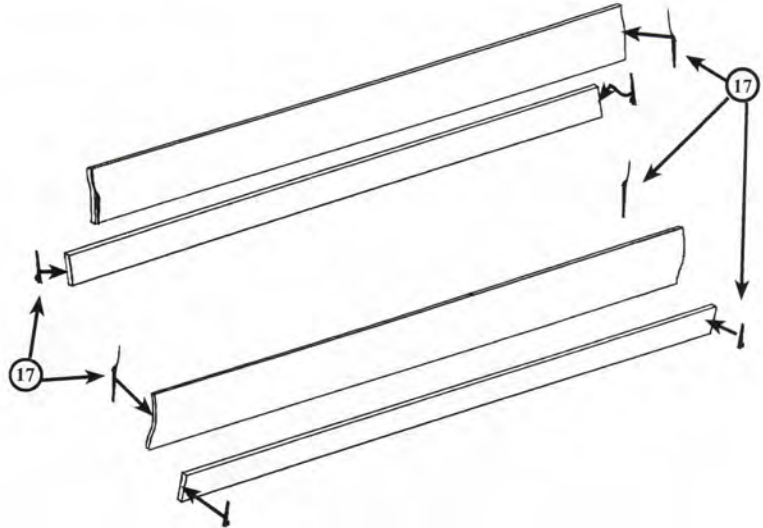
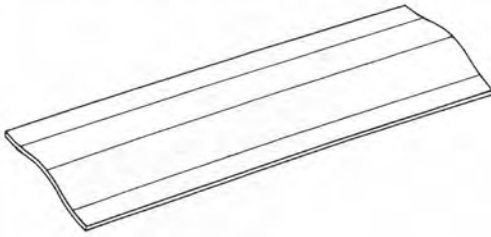
Shape and fit the rear spacers between Bomb Arches 13 and 16 so that they slot over Bomb Arches 14 and 15. A little trimming and adjusting to fit may be necessary where the spacers fit against Bomb Arch 16, because of the restricted space caused by the thickness of plastic in that area of the kit part.

Note: All the spacers should be fitted into place between the bomb arches, after the bomb arches and plates have been assembled into the model. This is not only for ease of accurate location but also will prevent any damage that could be caused when fitting a completed item into the model.



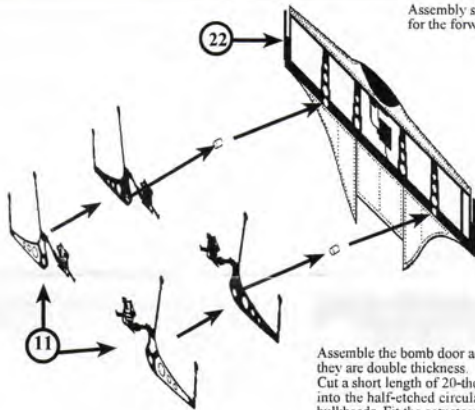
Bomb Door Preparation

Take the closed bomb doors provided in the kit as kit part 64 and cut the individual doors away. Fortunately the bomb doors have been molded with score lines in the correct places, so that the individual doors can be easily separated.

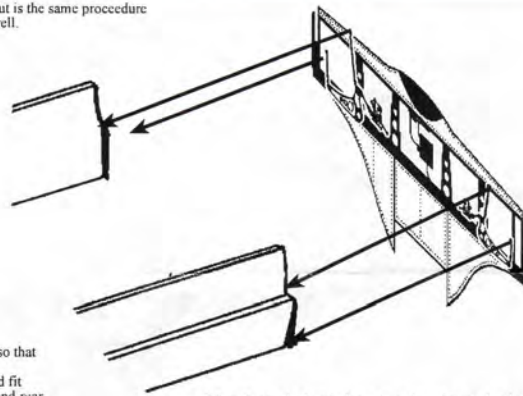


Fit the bomb door mechanism attachments, etched parts 17, to the end of the doors as shown right. The inner bomb doors can then be attached to the outers along the hinge lines so that you end up with a pair of open bomb doors.

Bomb Door Actuator Assembly



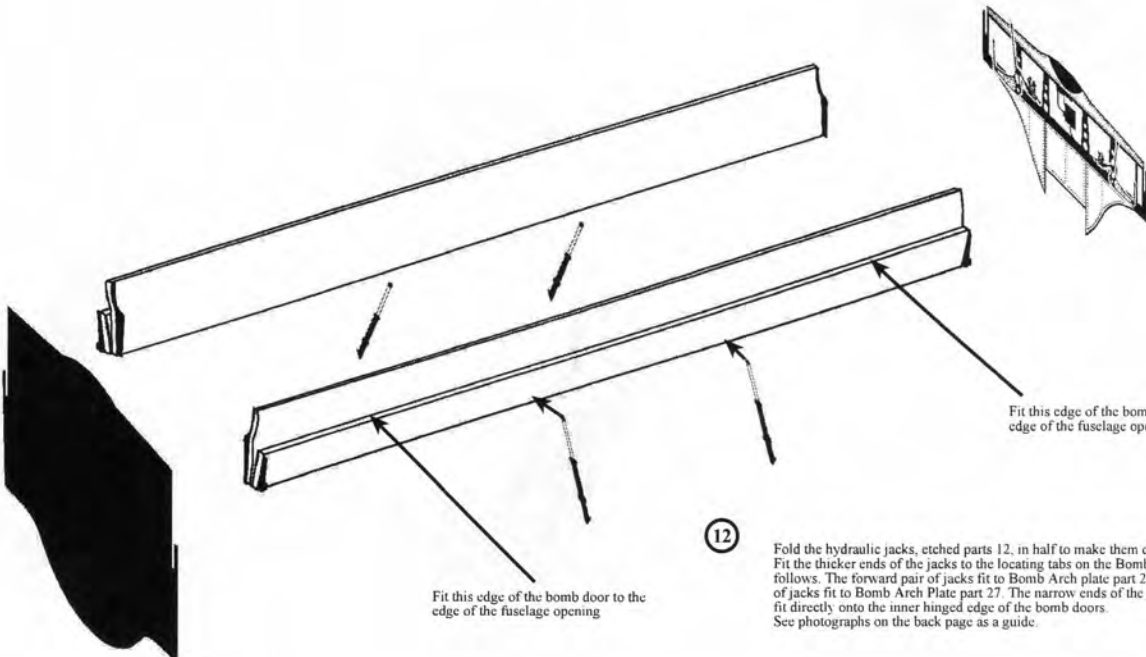
Assembly shows the rear bulkhead, but is the same procedure for the forward bulkhead fittings as well.



Assemble the bomb door actuators, etched parts 11, so that they are double thickness. Cut a short length of 20-thou diameter plastic rod and fit into the half-etched circular recess on the forward and rear bulkheads. Fit the actuators onto the plastic rods as shown.

When fitting the bomb doors into place, locate the shorter outer attachment rods to the attachment points on the outer doors. The longer attachment rods fit to the attachment points halfway along the end of the inner doors.

Bomb Door Hydraulic Jack Location

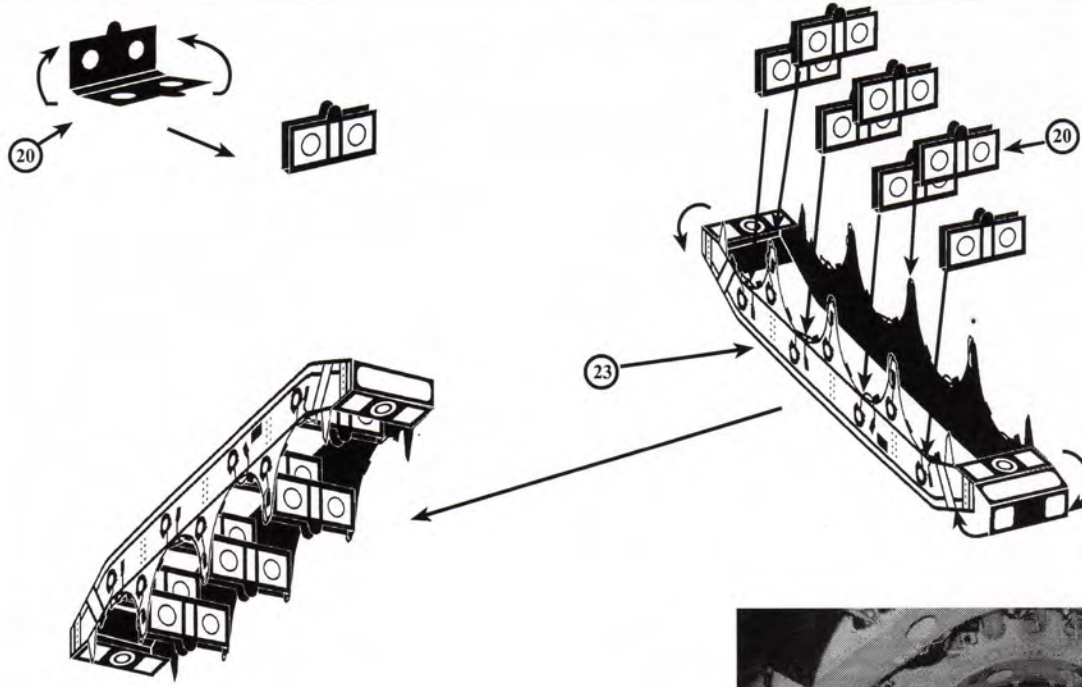


Fit this edge of the bomb door to the edge of the fuselage opening

Fit this edge of the bomb door to the edge of the fuselage opening

Fold the hydraulic jacks, etched parts 12, in half to make them double-thickness. Fit the thicker ends of the jacks to the locating tabs on the Bomb Arch Plates as follows. The forward pair of jacks fit to Bomb Arch plate part 25. The rear pair of jacks fit to Bomb Arch Plate part 27. The narrow ends of the jacks will then fit directly onto the inner hinged edge of the bomb doors. See photographs on the back page as a guide.

Bomb Carrier Unit Assembly



Fold the two spanwise sections of the Bomb Carrier Bridge Unit to 90° so that they are parallel. Fold the end sections over to shape so that they fit around the outer edges of the Bridge Unit. Fit the seven bomb carriers to the positions on the Bridge Unit as shown right, so that four of the carriers are positioned in the centres of the semi-circular recesses, and three are positioned between the points of the three triangular extensions. Up to three of these Bridge Units were carried in the Vulcan Bomb Bay, allowing a maximum of twenty-one 1000lb bombs in all. Leave the openings on the bomb carriers facing downwards in the Bridge Unit, so that the release unit fitted to the bombs may be slotted in between when fitting. 1/72 scale 1000-lb Bombs are available separately from White Ensign Models to fit this kit. Order item Pro 7205.

