

This detail set is manufactured from photo etched brass sheet and is meant for use on the TOGA KIT

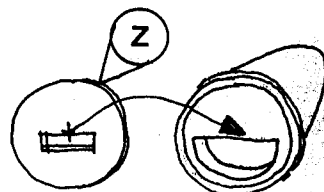
To separate components from the frame use a sharp modelling knife on a firm surface cutting as near to the part as possible. Tag scars can be cleaned by holding the part with a pair of pliers and using a fine file. To fold a part support up to the line of fold then fold in one go using a screw driver blade for leverage or use the E.D. brass folding tool ref. AM-22. For assembly use superglue or five minute epoxy. Prior to painting ensure that parts are thoroughly cleaned by washing in detergent and that they are primed with matt enamel paint.

The positions of parts indicated in the diagrams is for guidance only. For final position and colouration consult reference materials.

AIRWAVES are distributed:- by E.D. Models
 64 Stratford Road, Shirley, Solihull, West Midlands, B90 3LP, England.
 Telephone 0121 - 744 7488. Fax 0121 - 733 2591.

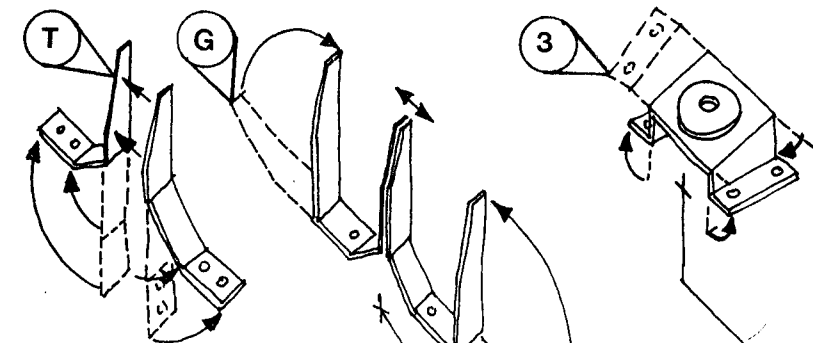
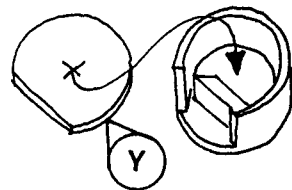
HEAD LIGHT COVERS

Locate fret parts Z into the front opening of each head light. (kit parts 63).



PERISCOPE COVERS

(seen on some UK vehicles)
 Locate fret parts Y onto the top of the kit parts 69

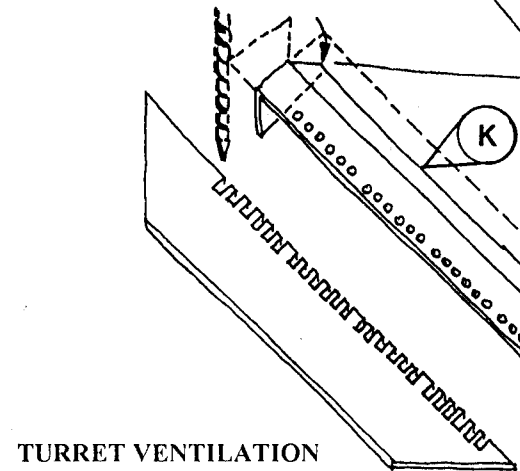
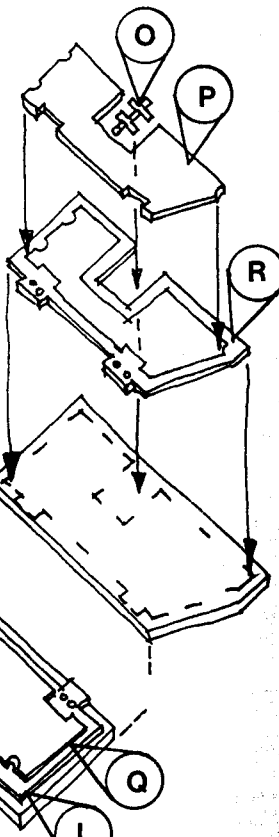


COMMANDERS SIGHT

Select single or triple blade version. Fold the fret parts T's or G's to shape and join together. Locate to the turret roof.

AERIAL BASE UNIT

Remove the kit moulded detail. Fold fret part 3 to shape then locate to the turret roof.



TURRET VENTILATION

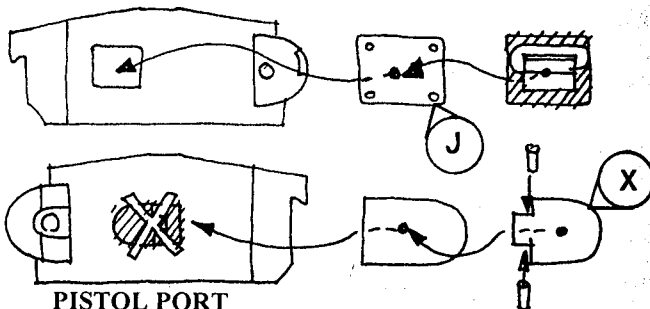
Remove the kit moulded detail. Fold fret part K to shape ready for use. Using the fret template adjacent to part K. Locate and drill 24 holes through the kit roof. Locate fret part K to cover the holes.

TURRET HATCH INTERIOR DETAIL

Sand the kit hatch interior faces smooth. Locate fret parts N, O, P, Q & R into their appropriate positions. Fix the hatches to the turret roof.

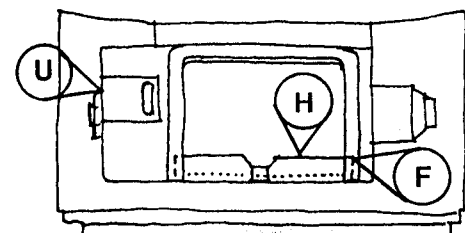
VISION BLOCK MOUNT

Sand the rear face off the kit part 28 leaving only the viewing block. Mount this onto fret part J and fix to the turret side as the kit instructions.



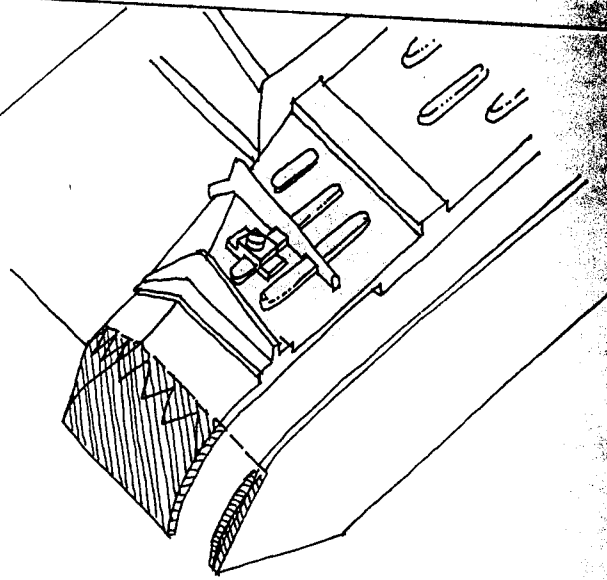
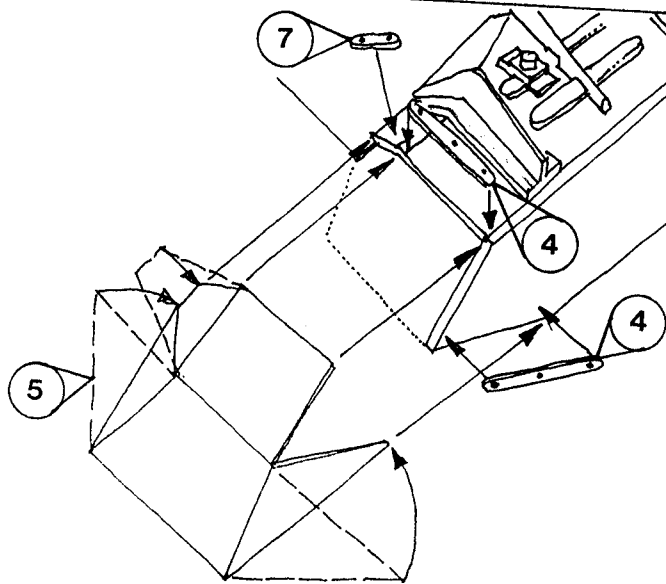
PISTOL PORT

Note the kit is moulded incorrectly with the port facing the front! Cut away the kit moulding and replace using plastic card, rod (not included) and fret part X.



TURRET MANTLET DETAIL

Curve both fret parts U & F to shape. Locate into their final position. Locate fret part H into the mantlet opening and complete as instructions.



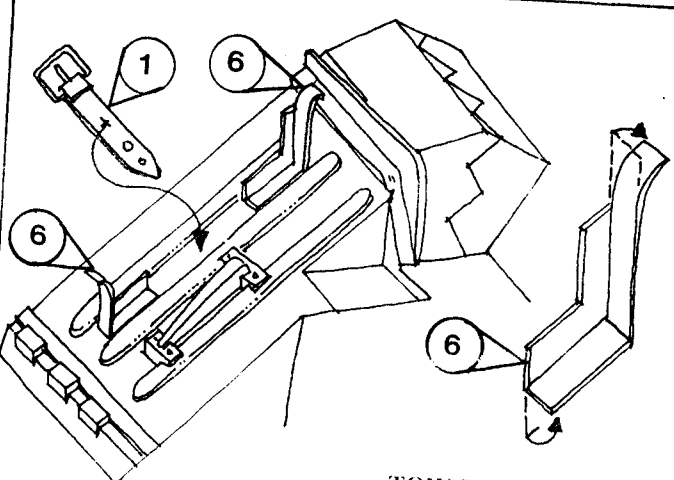
Assembly

Form the dust shield fret part 5 to its final shape try against the kit track guard and adjust as necessary. Assemble the fret part onto the hull. Add the reinforcement straps fret parts 4 & 7 to the new joint lines. Repeat for the opposite hand.

NORTH AFRICAN DUST SHIELDS

Preparation

Cut away the kit track guards and side skirts, using the line of the moulded zigzag joint as a datum mark. Repeat for both sides.



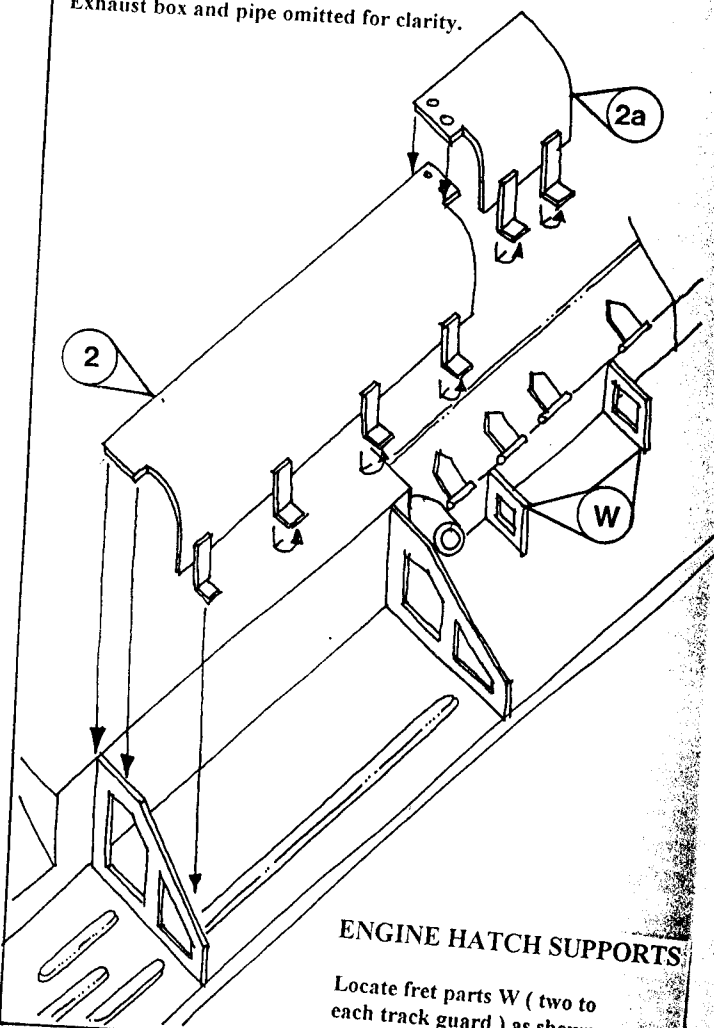
TOW ROPE BRACKET

Fold fret parts 6 to shape and locate to kit track guard. Add the retaining strap fret part 1 midway between the brackets.

EXHAUST SHIELDS

Form fret parts 2 & 2a to their curved shape using the moulded kit part 55 as a former. Locate to the track guard in place of kit part 55

Exhaust box and pipe omitted for clarity.



ENGINE HATCH SUPPORTS

Locate fret parts W (two to each track guard) as shown.

TOOL BOX FRAME

Fold the box fret part V to shape then add the restraint straps fret parts M onto the frame edge. Locate the whole assembly in place of the kit parts 58 & 59.

