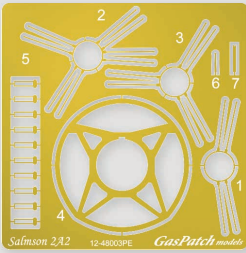
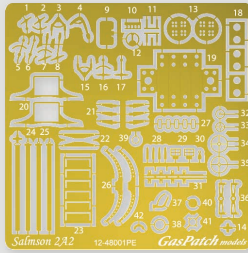


Built in a large numbers, the French Salmson 2A2 was the most widely used reconnaissance aircraft in the final year of the First World War. So much was the amazement of the Japanese observers in France at its performance that several of these two-seater biplanes were sent to Japan and were later used to train the Japanese aircrew according to the most up-to-date flying techniques. Also, in 1919 the President of the Kawasaki Dockyard Company acquired not only the manufacturing rights to it, but also an army contract to build it. This became a reality in 1920 although the Japanese Army was only allowed to manufacture engines. Salmson representatives filed a protest, but the two parties came soon to a mutual agreement and worked in collaboration thereafter.

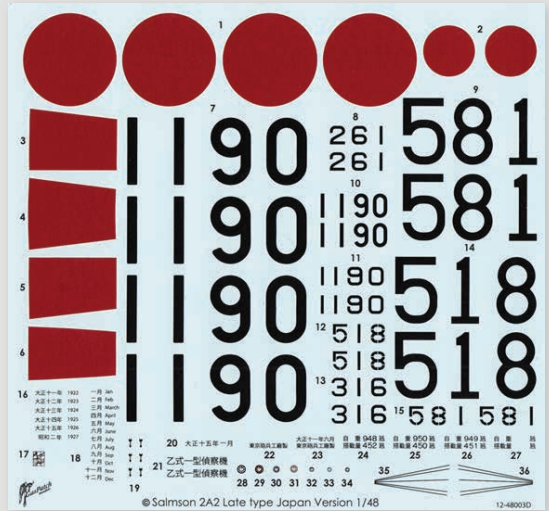
Otsu-1 was the first Japanese Army-built version of the French Salmson 2A2 produced in 1920. The Japanese-built 2A2 biplanes were almost identical to the original aircraft apart from minor modifications. Both the French and the Japanese experimented on alternative engines; however, due to overheating problems their production ceased. The modified Type Otsu-1 took part in the Russian Civil War in 1922 and had a wide range of uses including bombing, liaison, light cargo transport and ration re-supply to name just a few. It remained the Japanese Army's principal reconnaissance aircraft until 1933. After their release from the military service their popularity rose when they were sold as military surplus to civilian pilots and were used as mail planes.



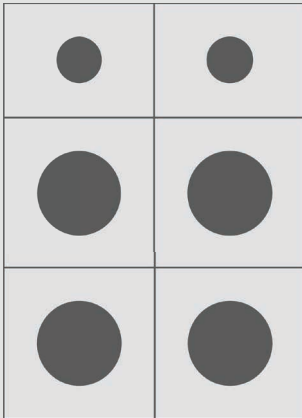
Engine Photo Etched



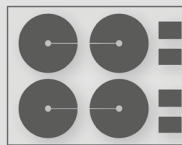
Main Photo Etched



Decals



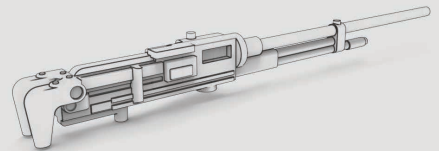
Masks for Hinomaru



Masks for Wheels and Wingshields



Acetate for PE Wing shield



1 Japanese Hotchkiss resin gun

## Color Reference

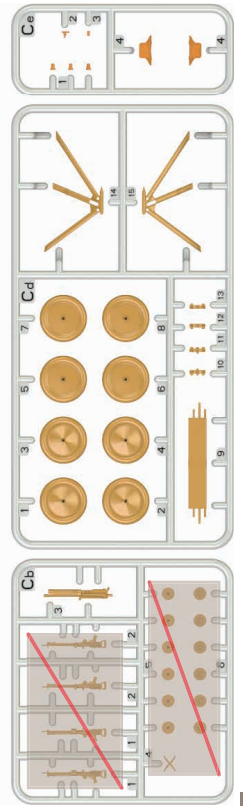
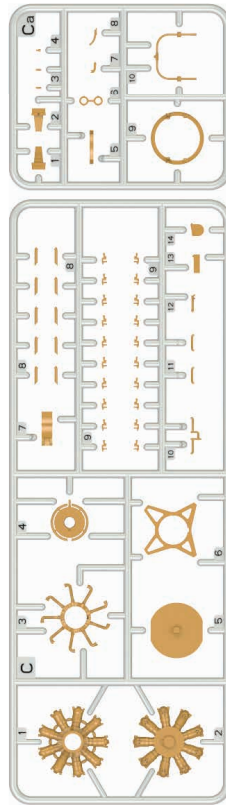
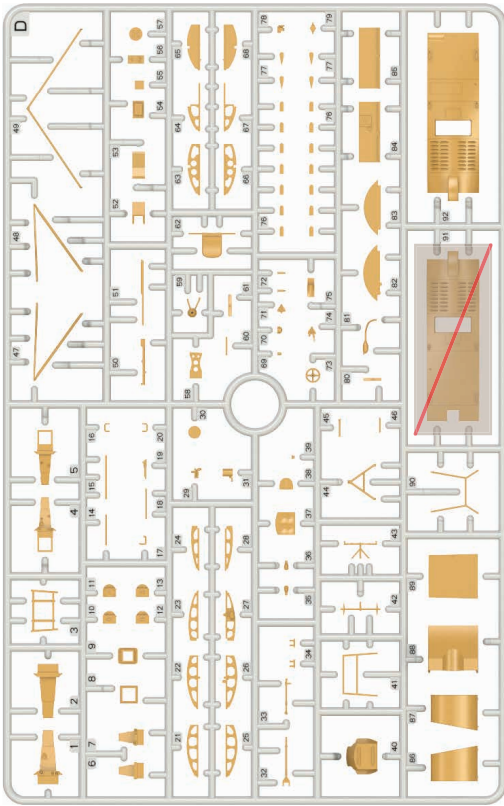
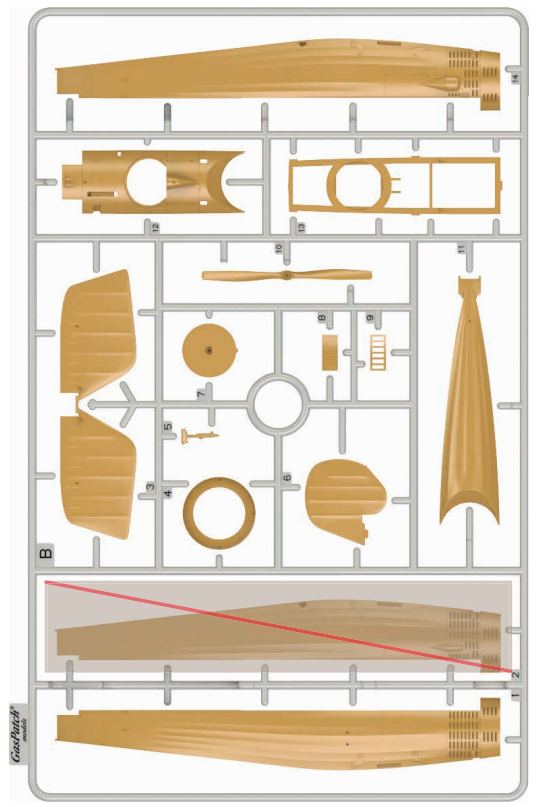
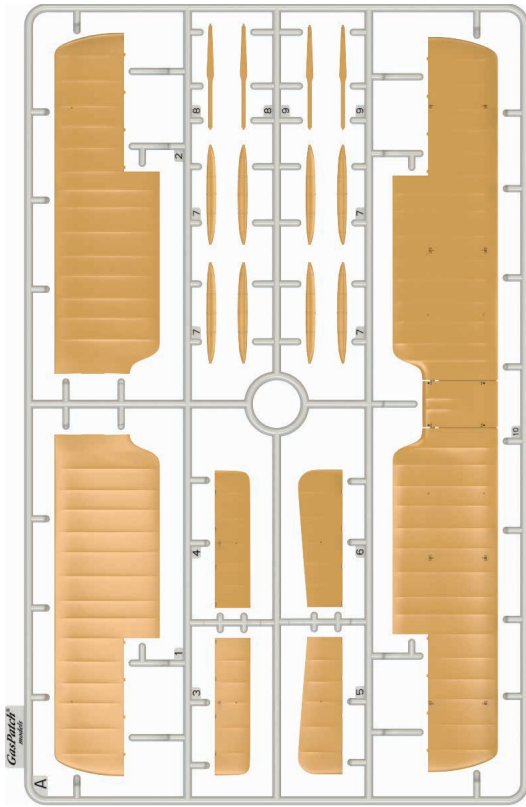
White	
Black	
Aluminum	
Wood Color	
Tire Grey	
Gun Metal	
Dull Red	
Maroon	
Natural Metal	
Linen	
Exhaust	

## Symbols Reference

	Attention		Cut/Remove
	Part Number		Hole
	Main Photo Etched		Option
	Engine Photo Etched		Bend
	Symmetry		Saw
	Glue		Smooth
	No Glue		Mask
	Paint		Apply Decal
	No Paint		Not for use
	Color		

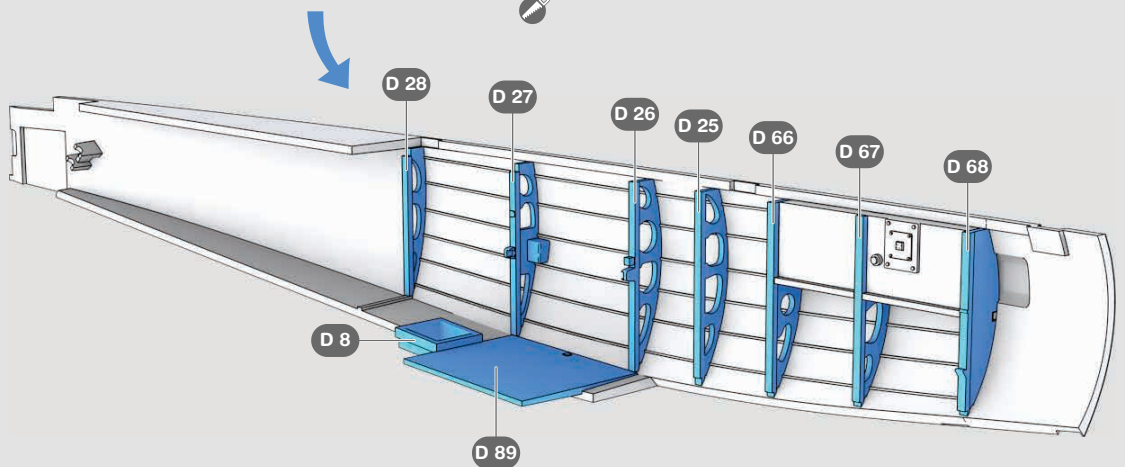
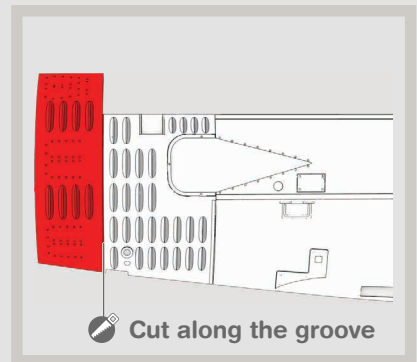
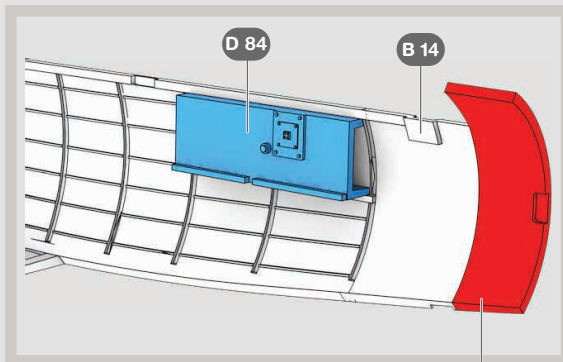
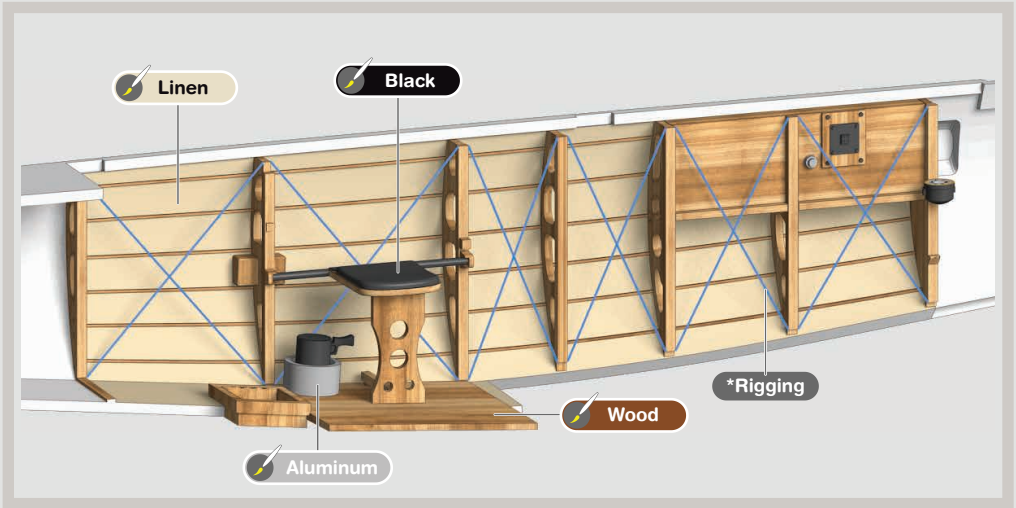
## Tips and tricks

- ! STUDY INSTRUCTIONS CAREFULLY.
- ! USE PHOTO ETCHED SAW FOR CUTTING SMALL THIN PARTS FROM SPRUE TREE.
- ! DECALS NEED ONLY 4-5' SEC IN WATER. USE DECAL SETTING SOLUTION.
- ! USE CA (CYANOACRYLATE) OR WHITE GLUE FOR DIFFERENT MATERIALS.
- ! TAKE BASIC SAFETY PRECAUTIONS.



# 1 Building and painting interior (Left side)

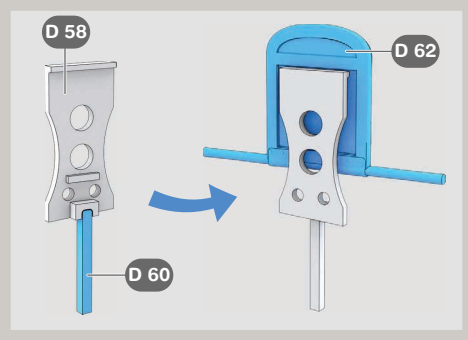
## Left side painting instructions



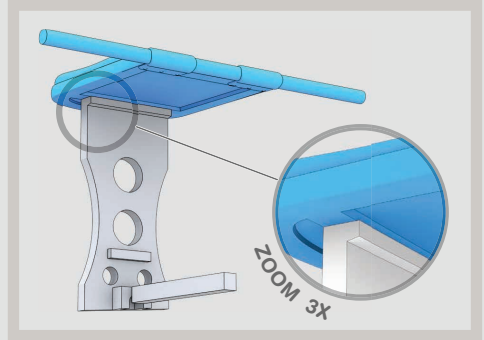


## 2 Adding details to interior (Left side)

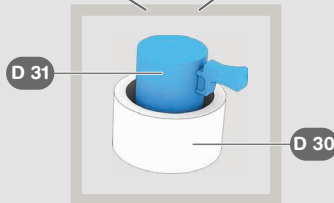
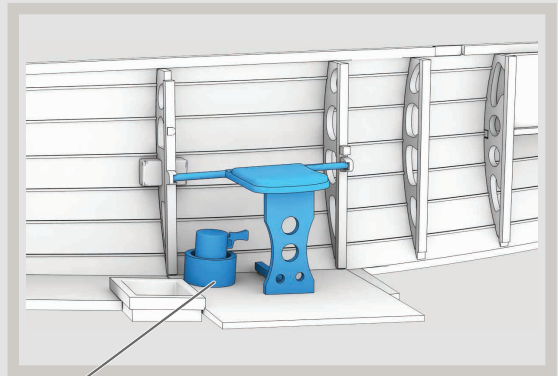
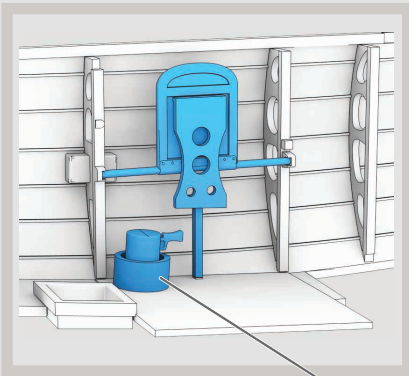
### Observer/Gunner seat



Folded seat



Unfolded seat



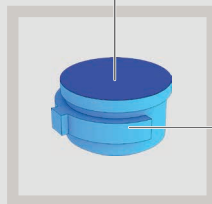
Signal lamp & holder

### Compass

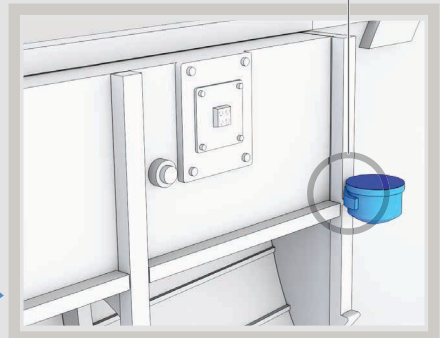


Black

28/29



Compass

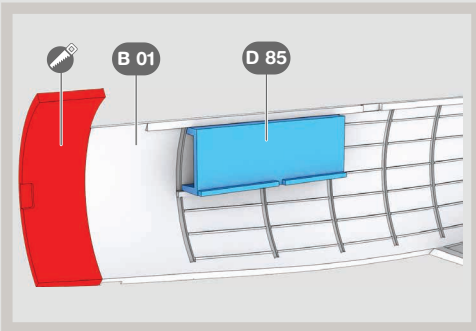


### 3 Building and painting interior (Right side)

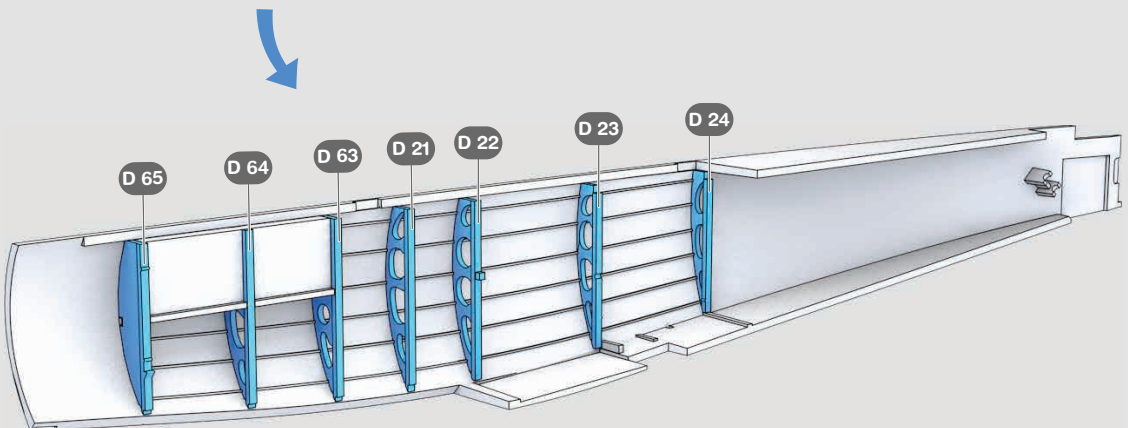
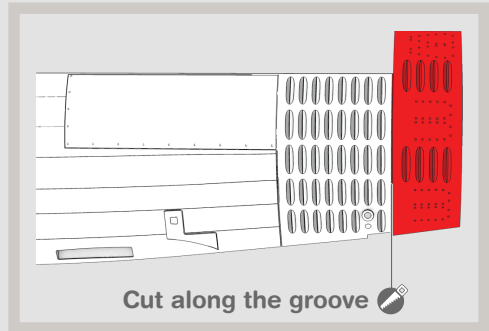
#### Right side painting instructions



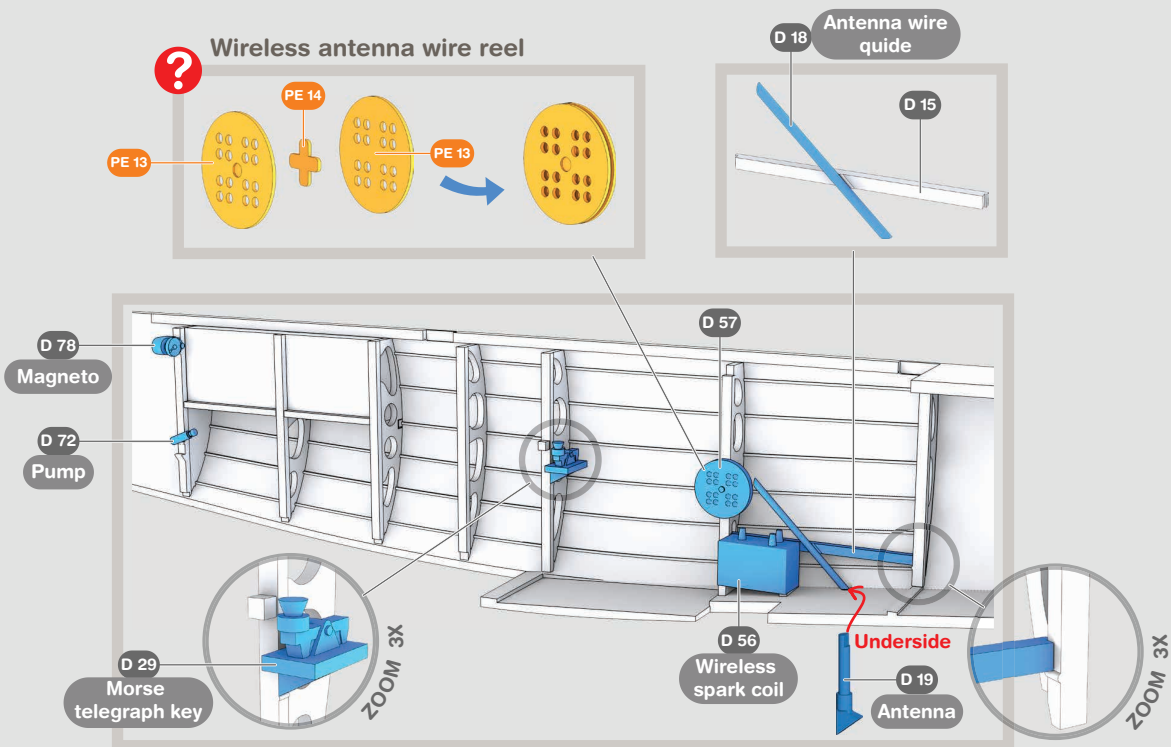
#### Inside view



#### Outside view



## 4 Adding details to interior (Right side)

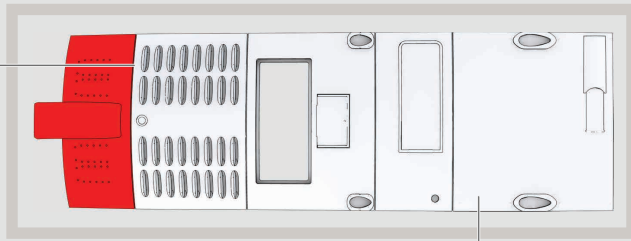


## 5 Stick assembly

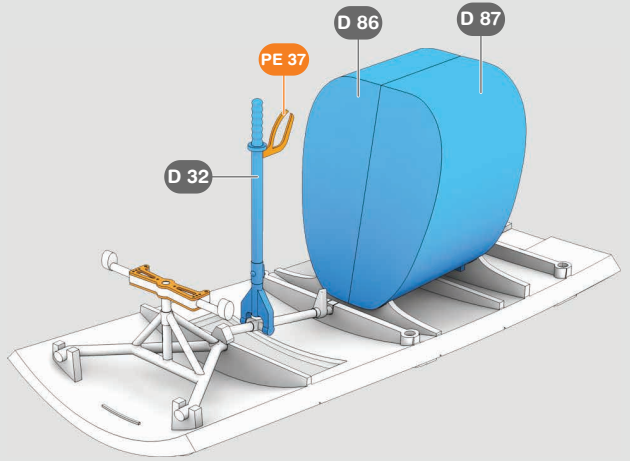
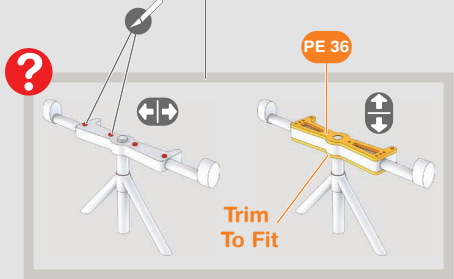
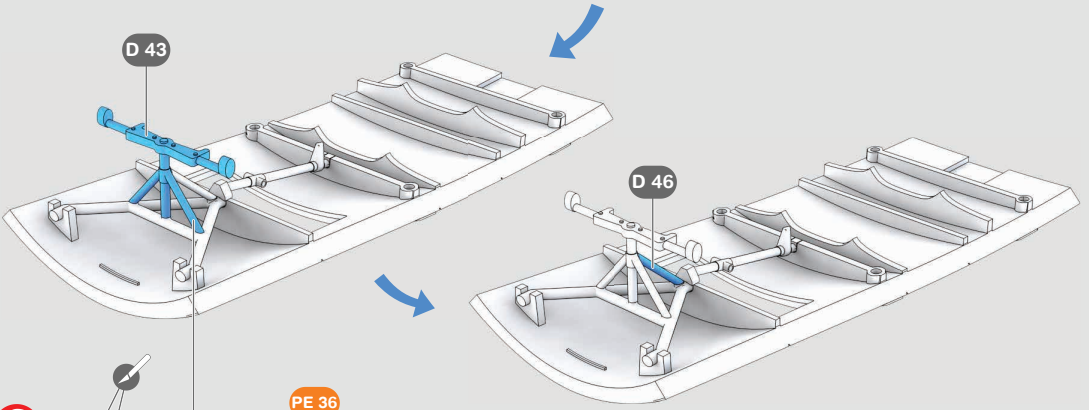
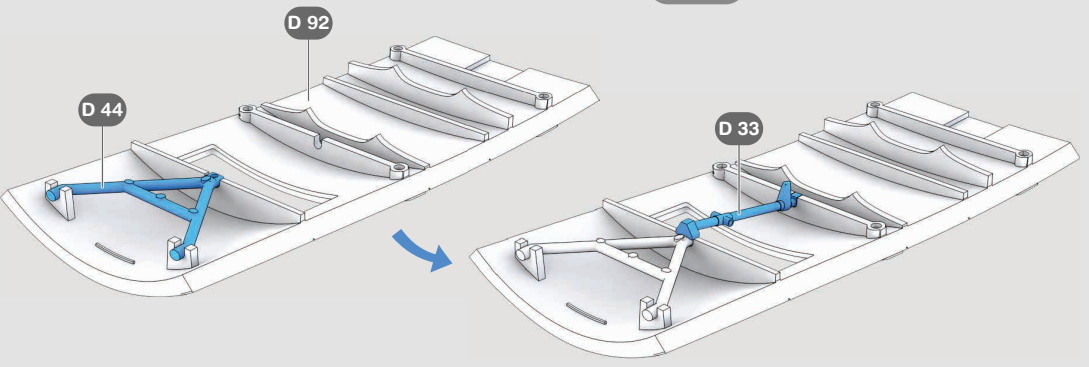
### Pilot's seat and stick



Cut along the groove

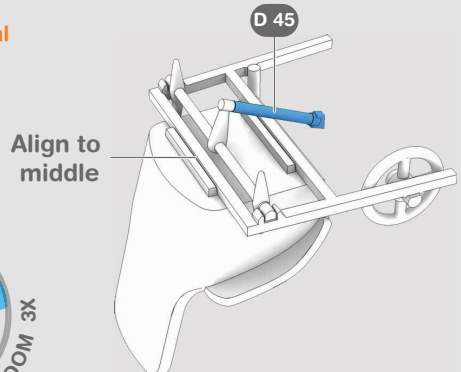
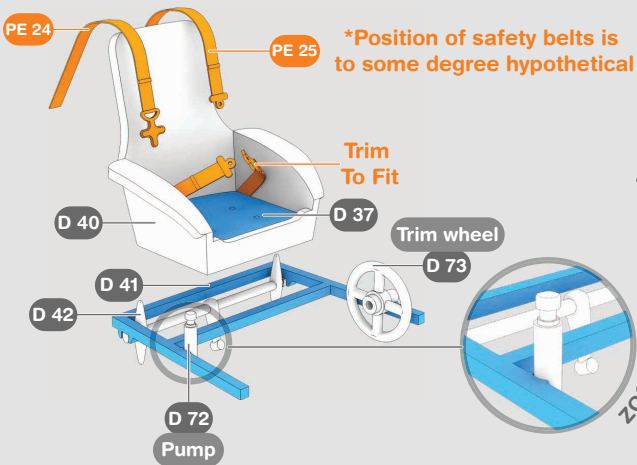
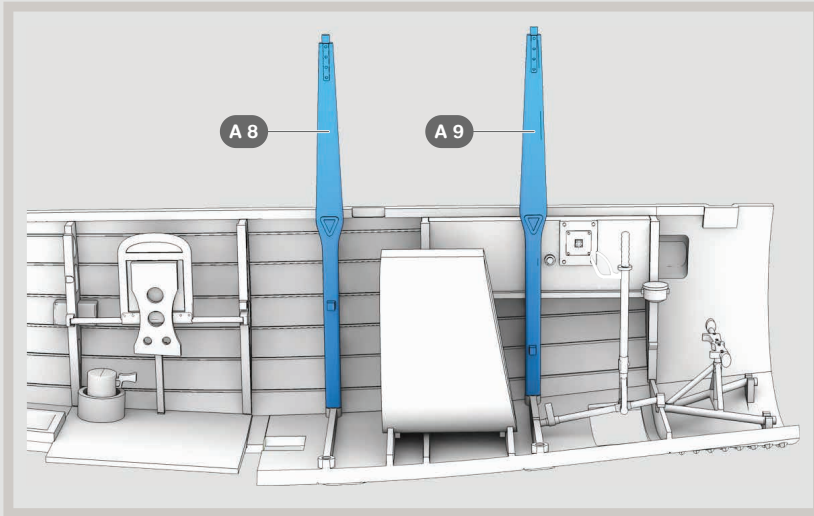
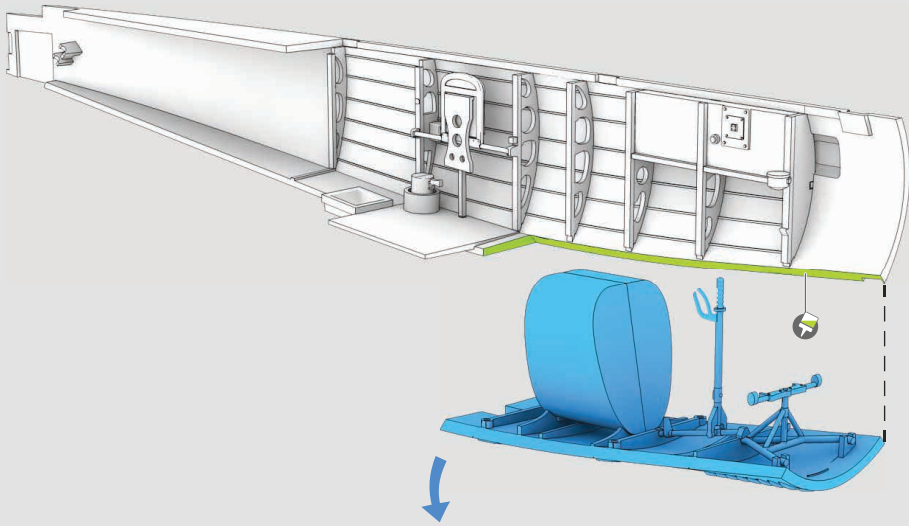


D 92  
Late type

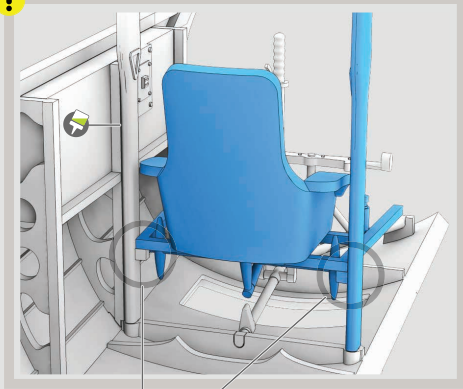




## 6 Pilot's seat assembly

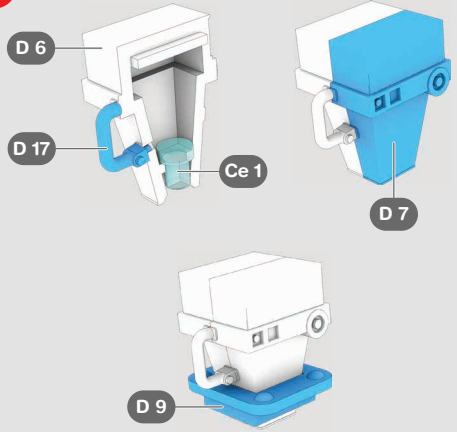


### Pilot's seat attachment points



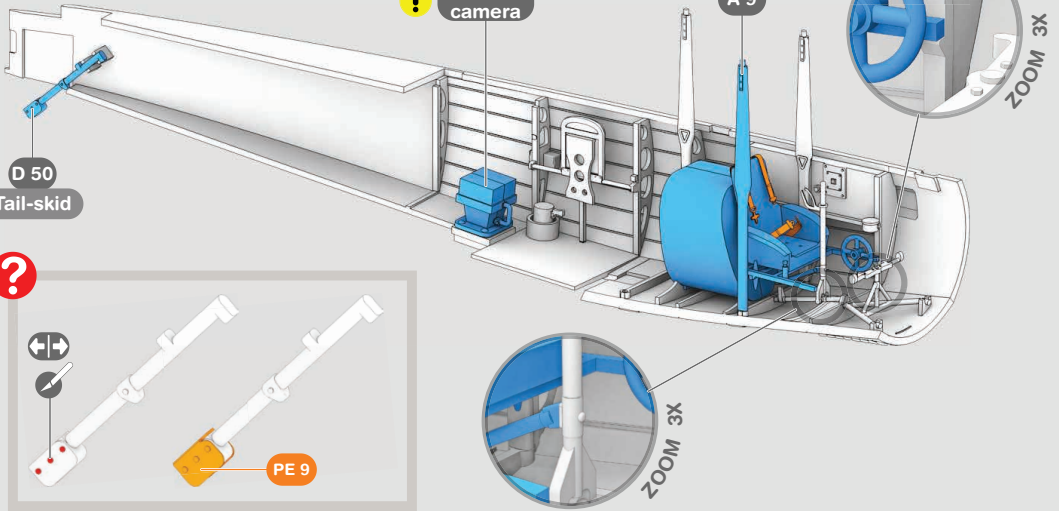
Rear attachment points

### Camera 26mm rear attachment

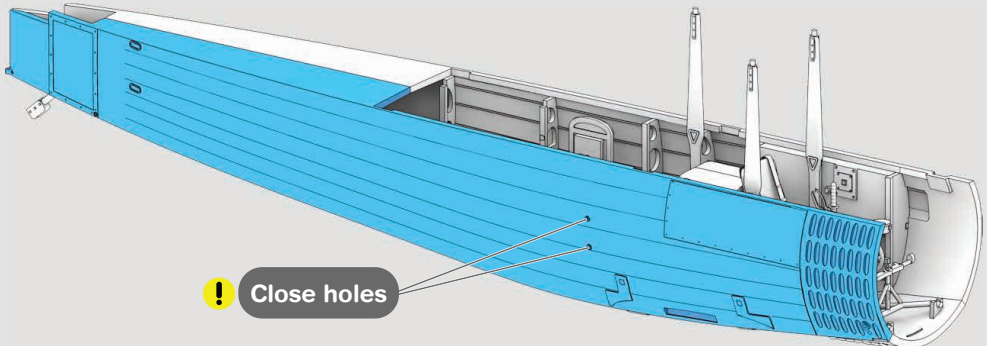


### Alternative cameras to step 9

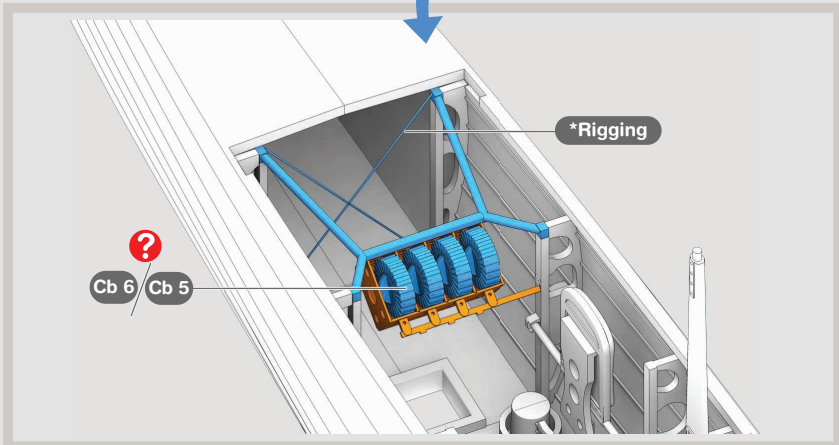
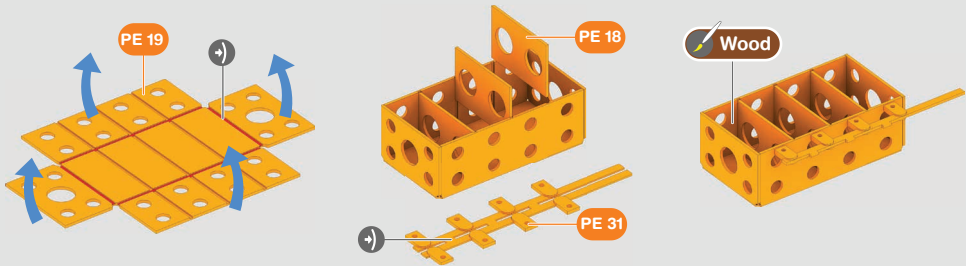
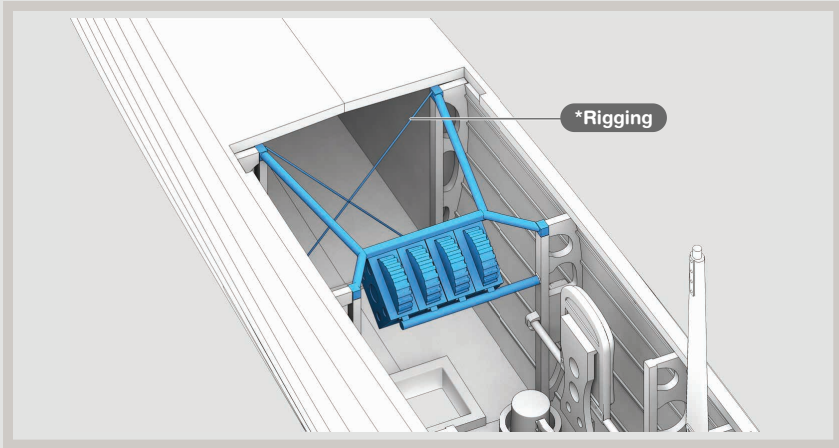
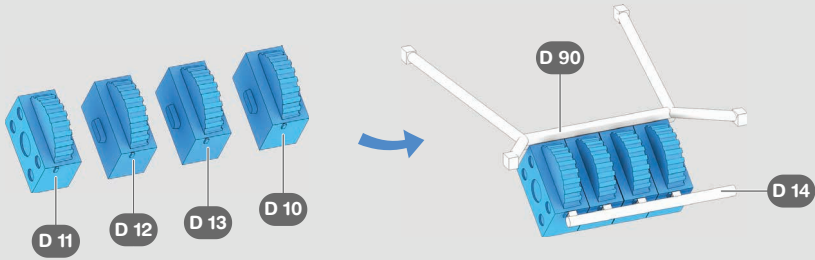
#### ! Rear camera



## 7 Connect fuselage

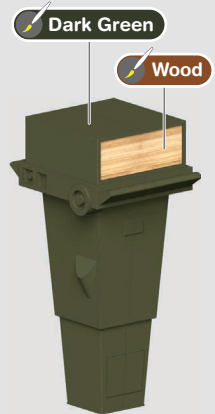
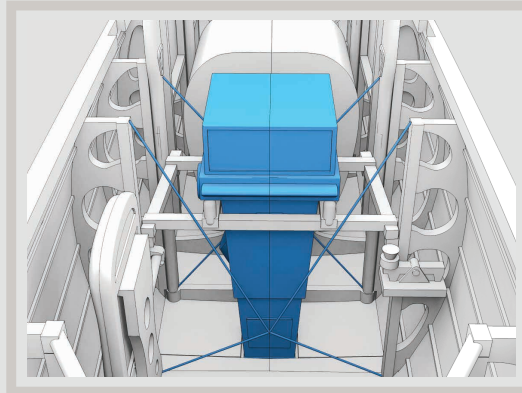
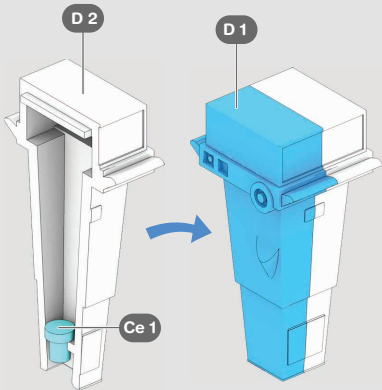
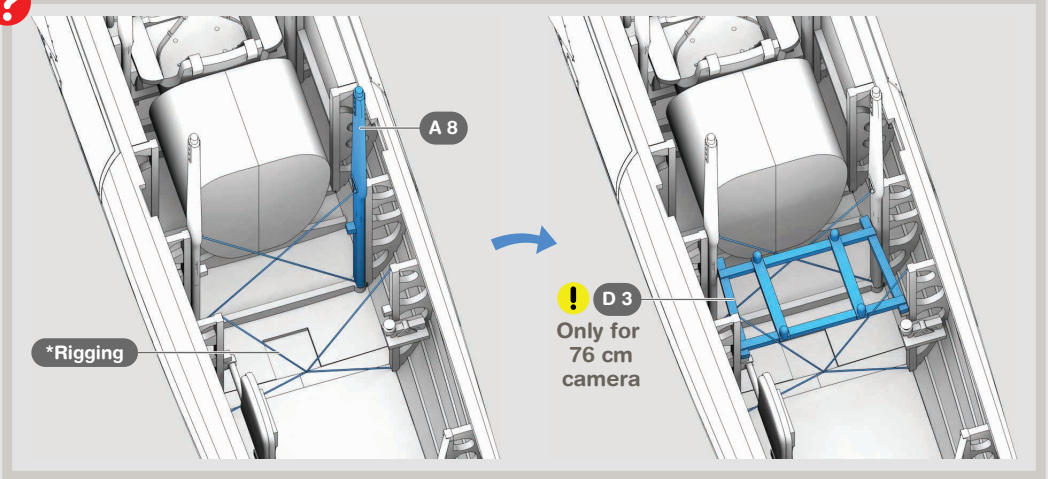


## 8 Ammo storage rack

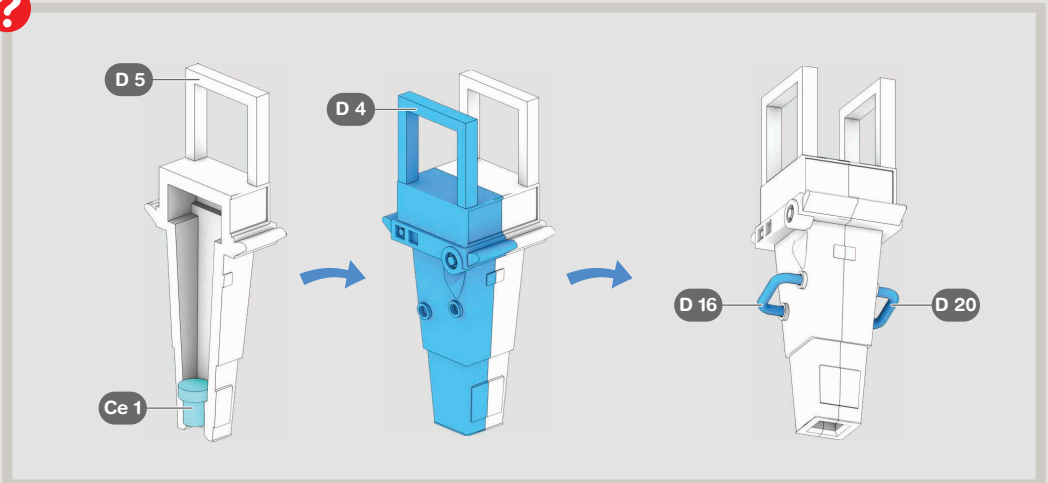


## 9 Adding alternative cameras

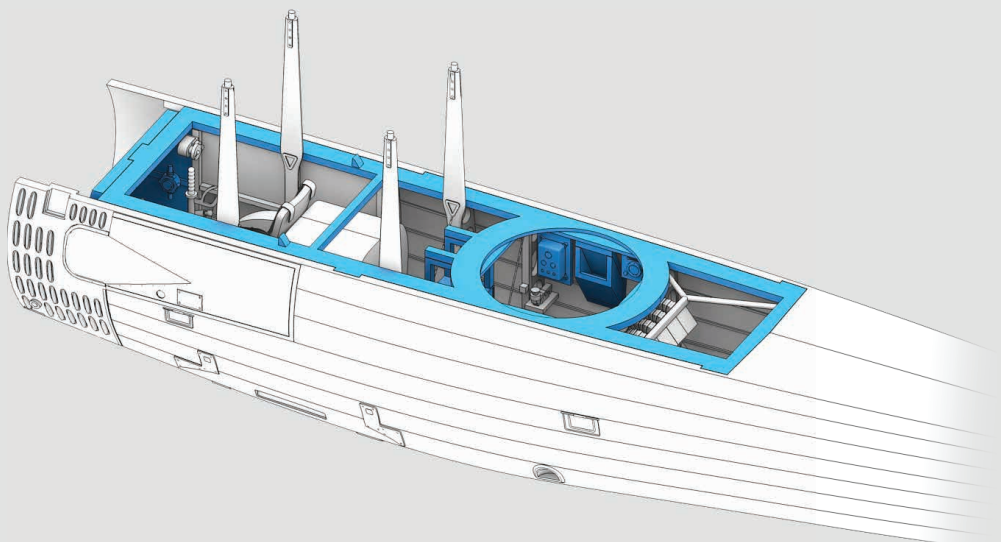
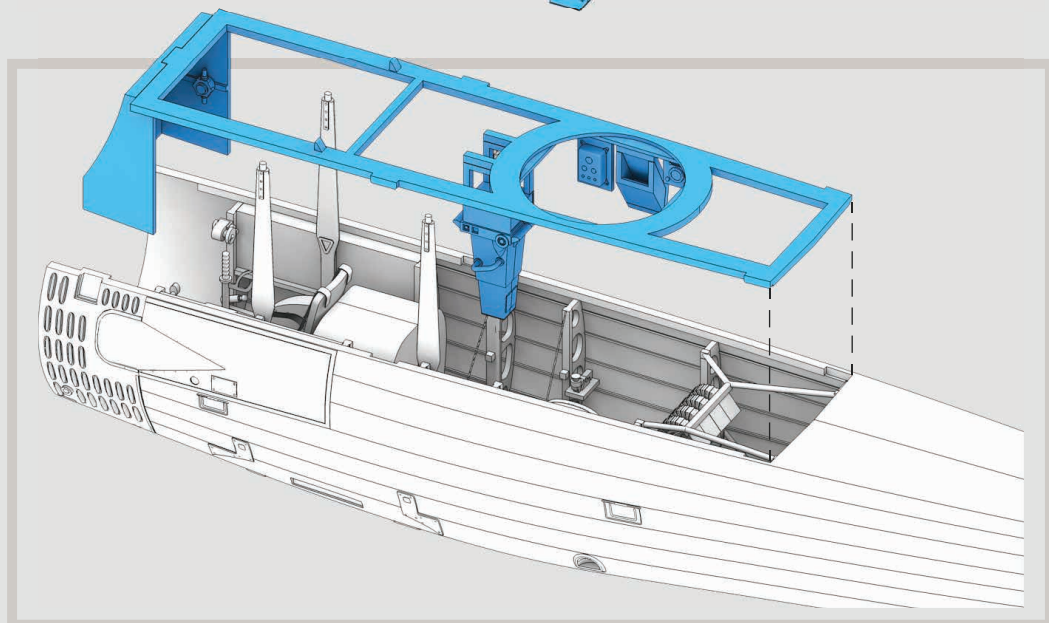
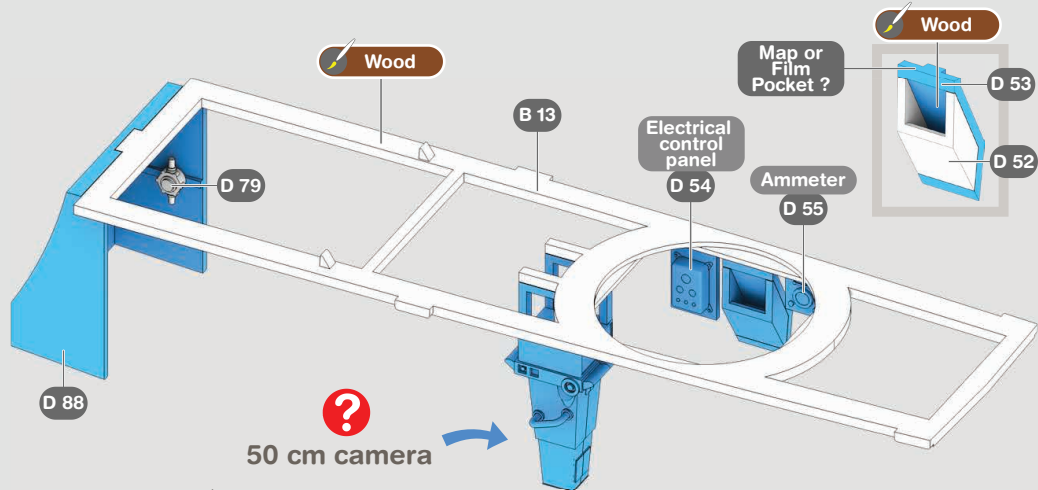
### ? 76 cm camera



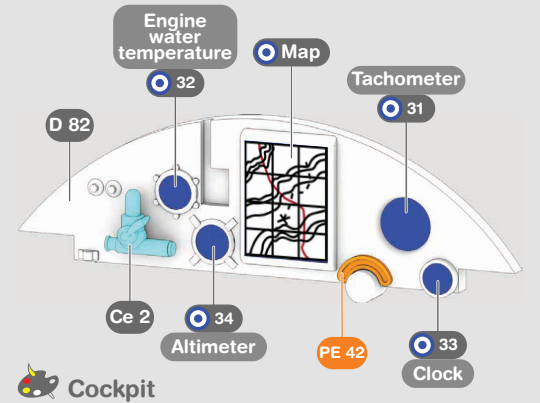
### ? 50 cm camera



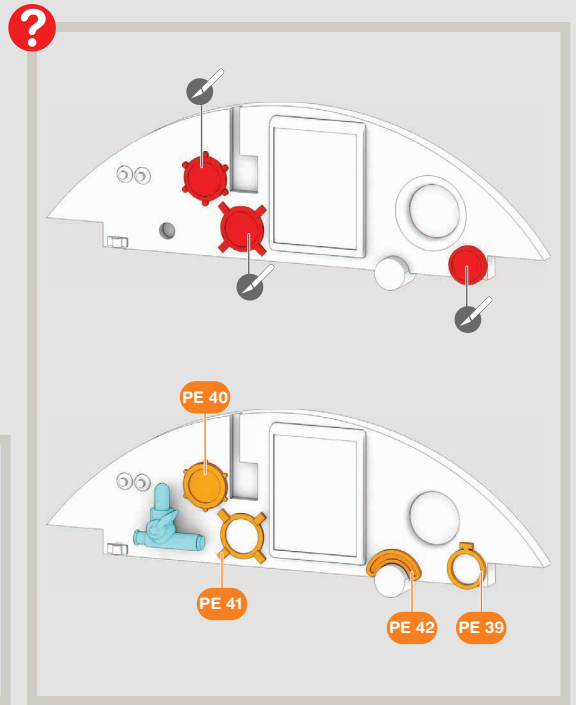
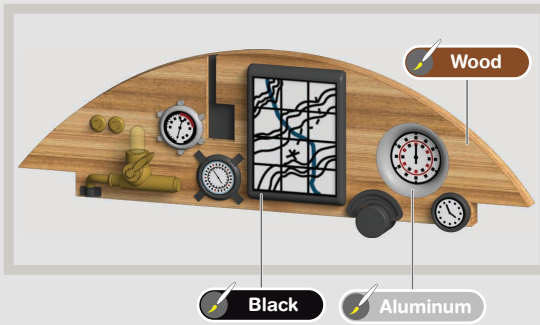




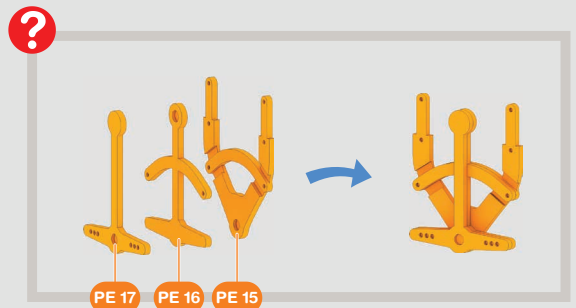
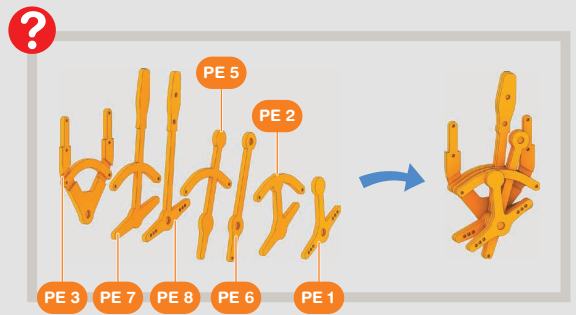
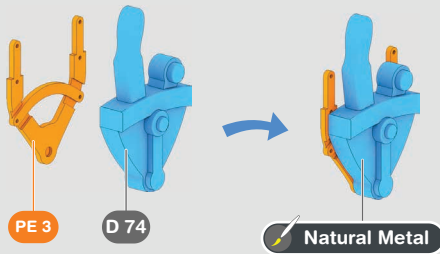
# 10 Cockpit



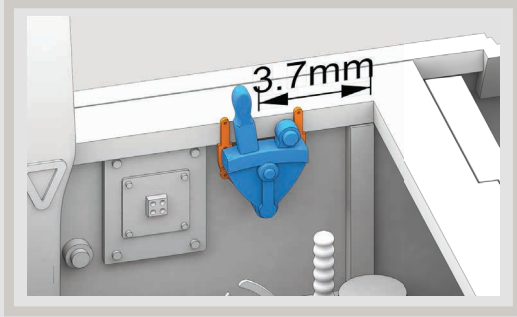
Cockpit



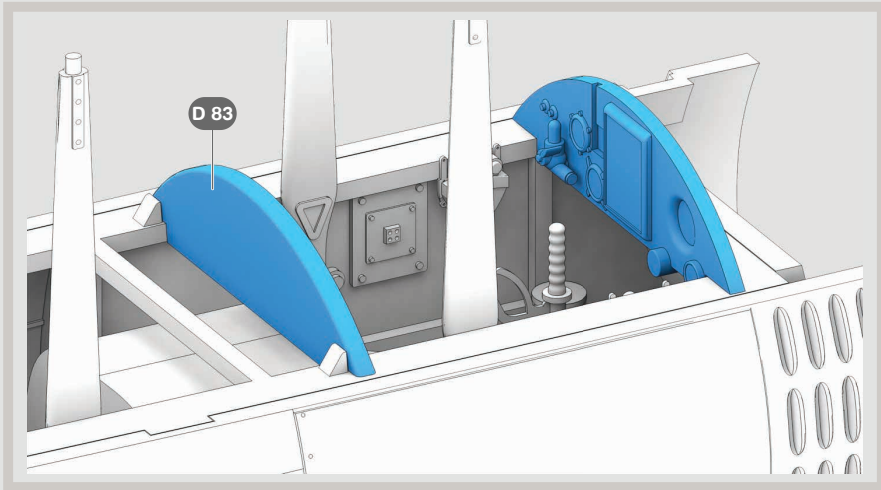
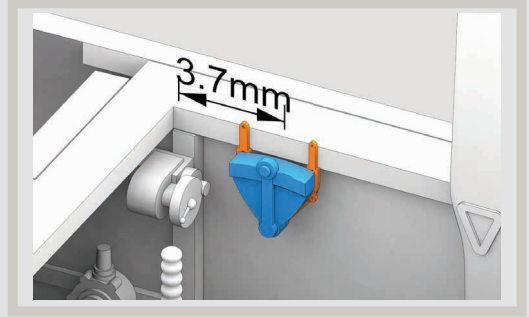
# 11 Cockpit engine controls



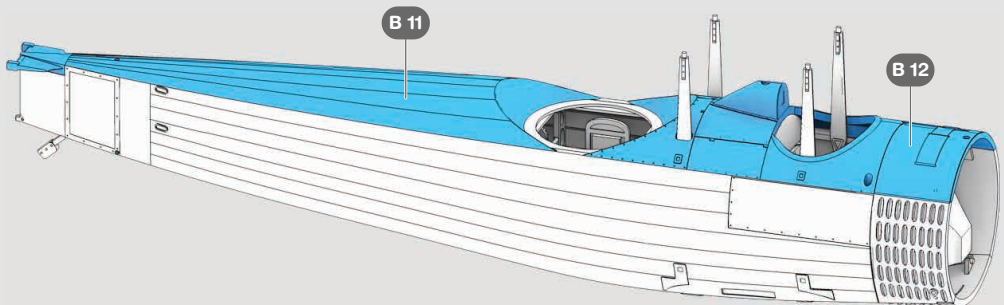
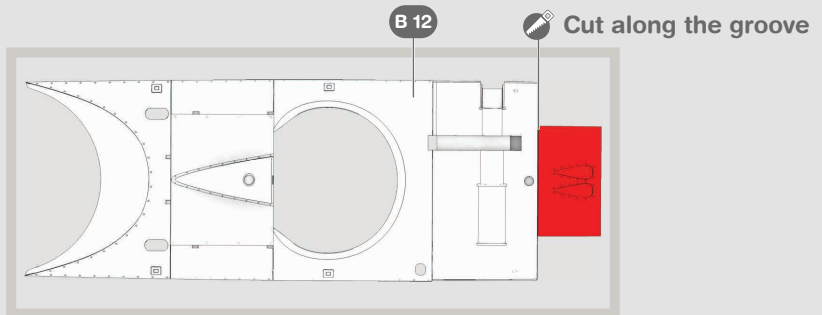
Left side



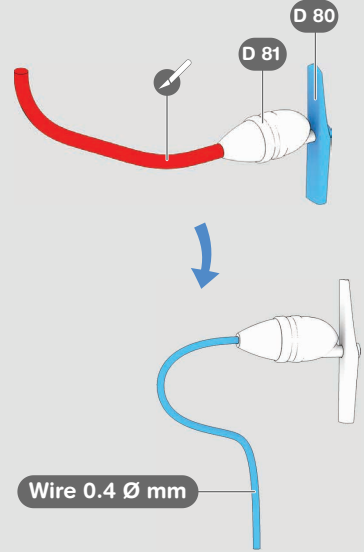
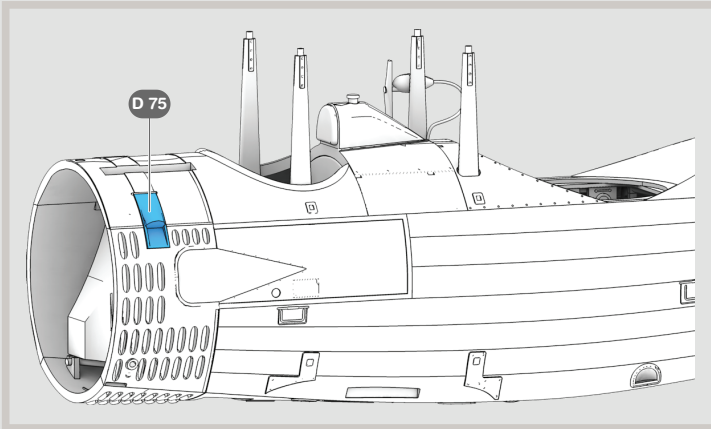
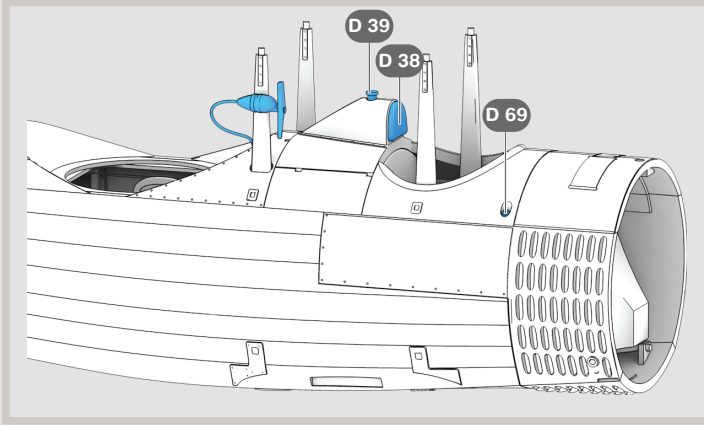
Right side



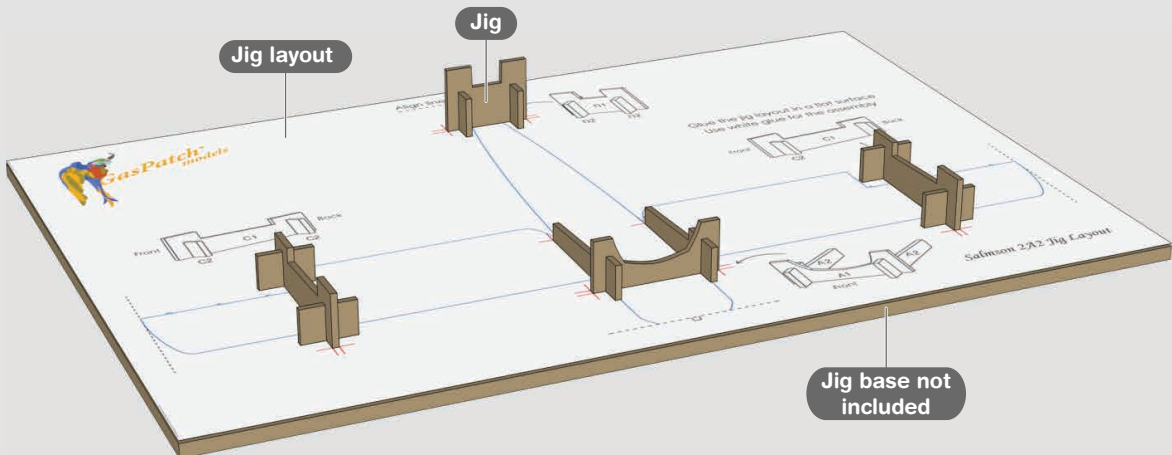
## 12 Closing fuselage



## 13 Adding exterior detail

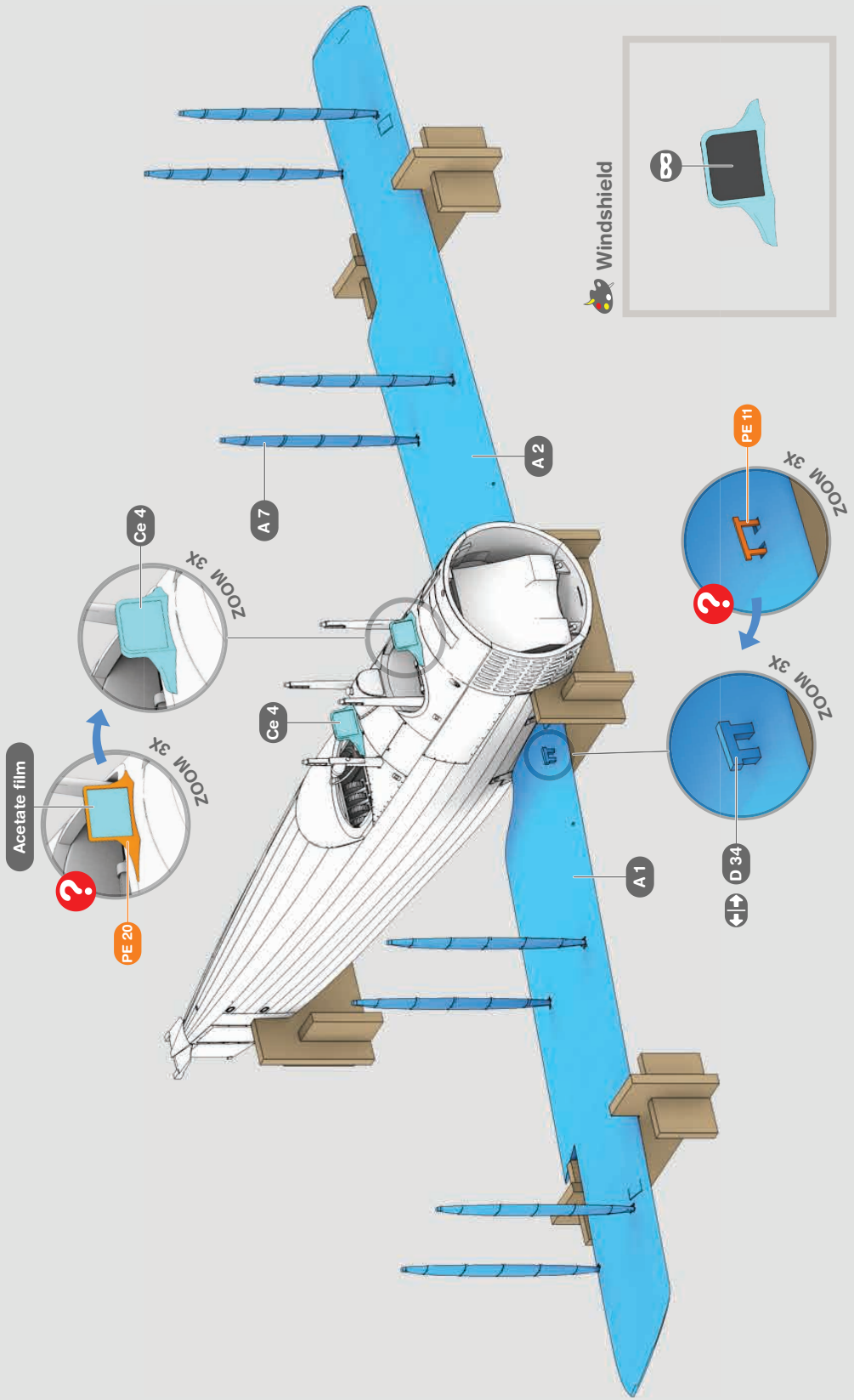


## 14 Jig assembly

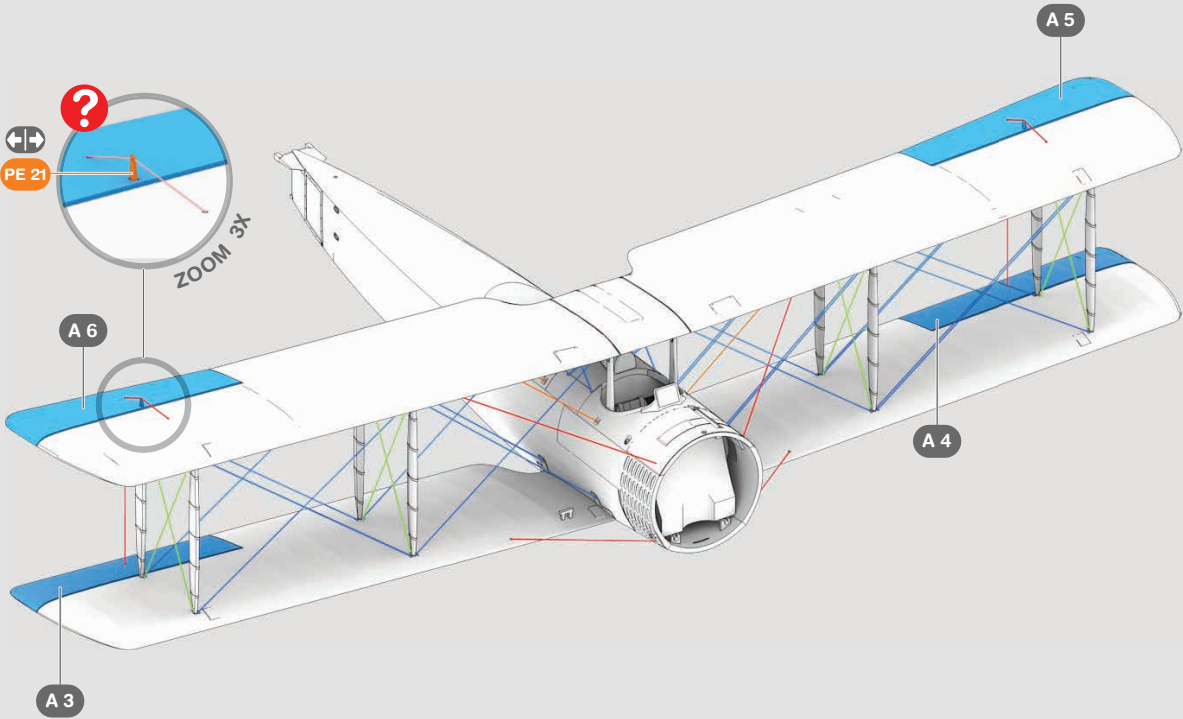
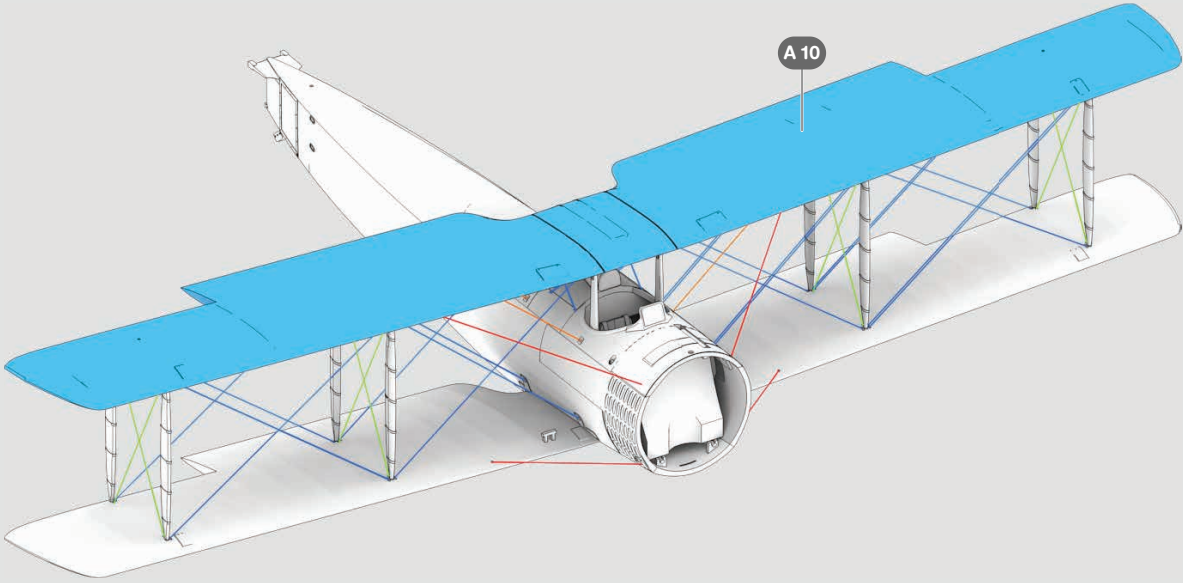


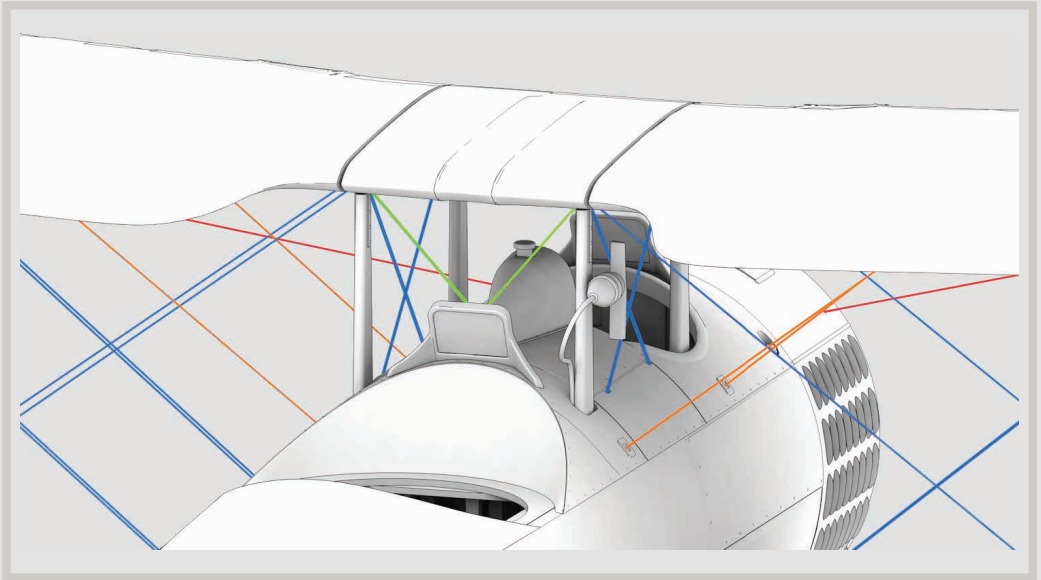
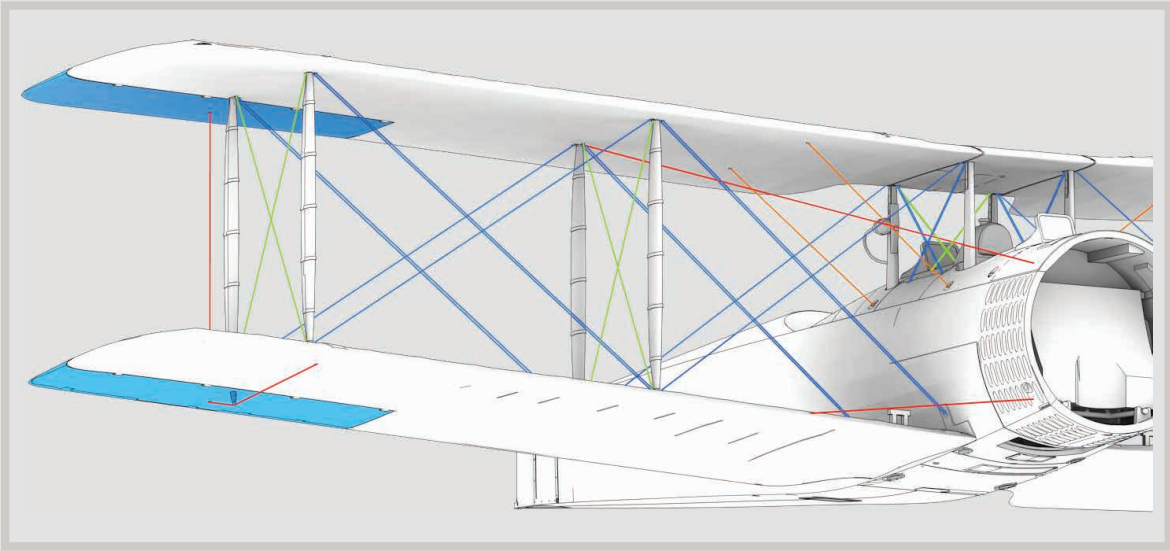


# 15 Adding lower wings



## 16 Adding upper wing, aileron and \*Rigging

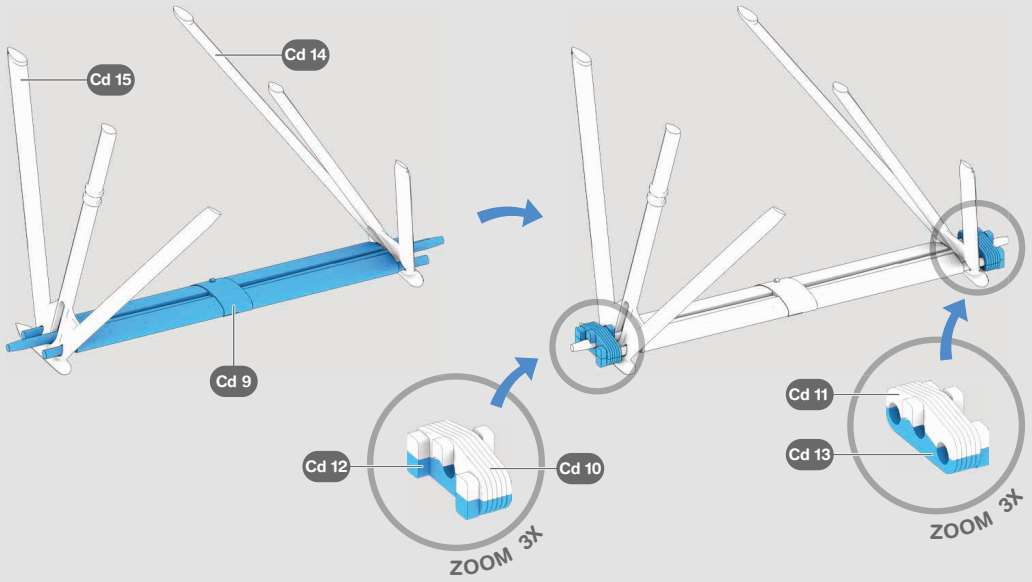




**!** We recommend Type B, Type C and Anchor points 1/48 Gaspach metal turnbuckles.

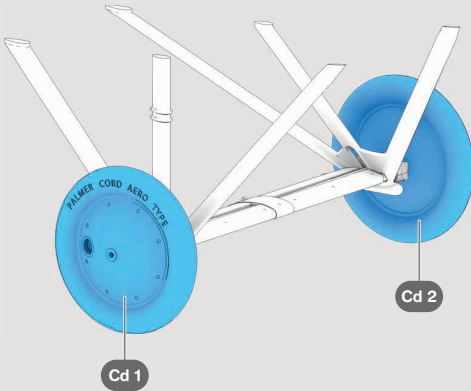


# 17 Undercarriage

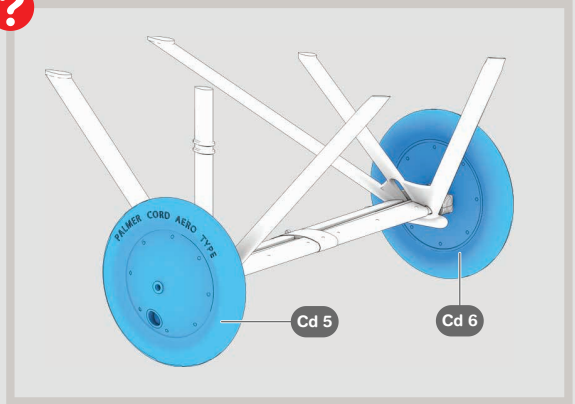


**!** USE CA (CYANOACRYLATE) GLUE FOR THE WHEELS

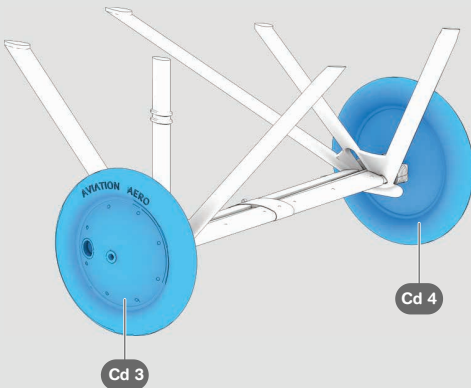
Late type US



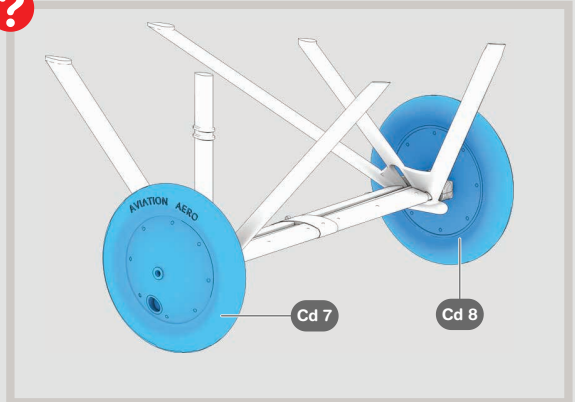
**?** Early type US



Late type French



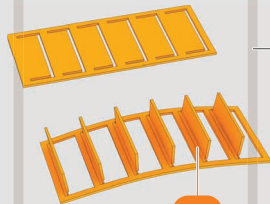
**?** Early type French



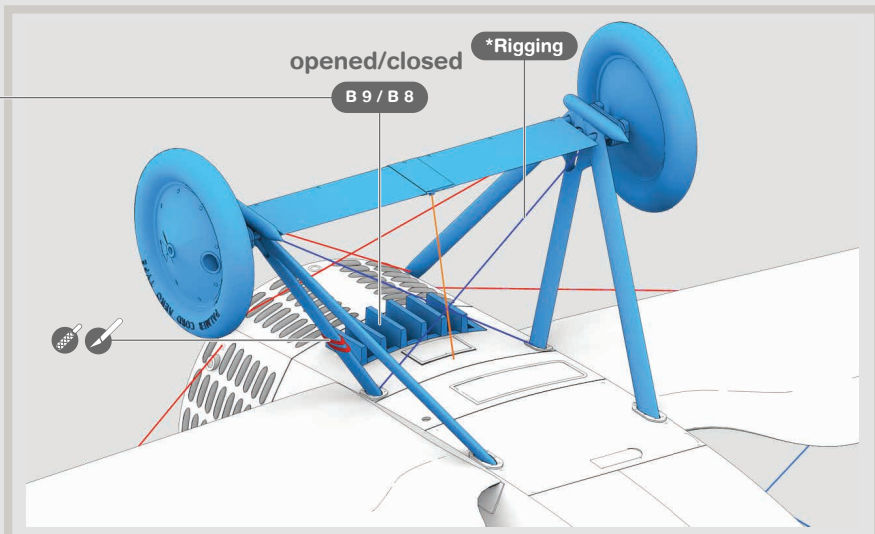




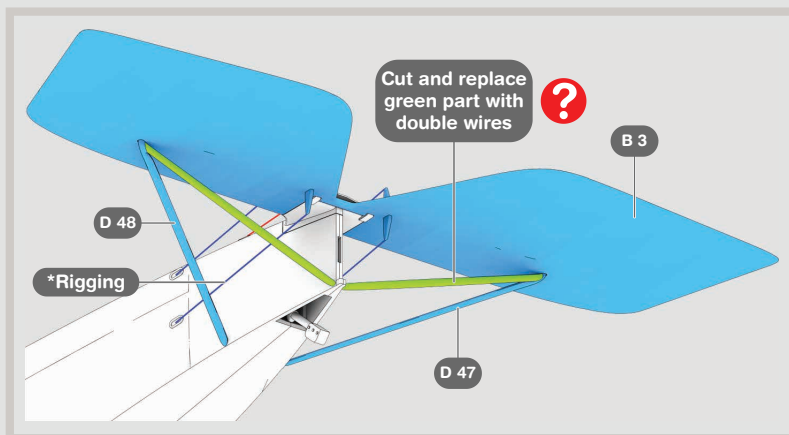
closed/opened



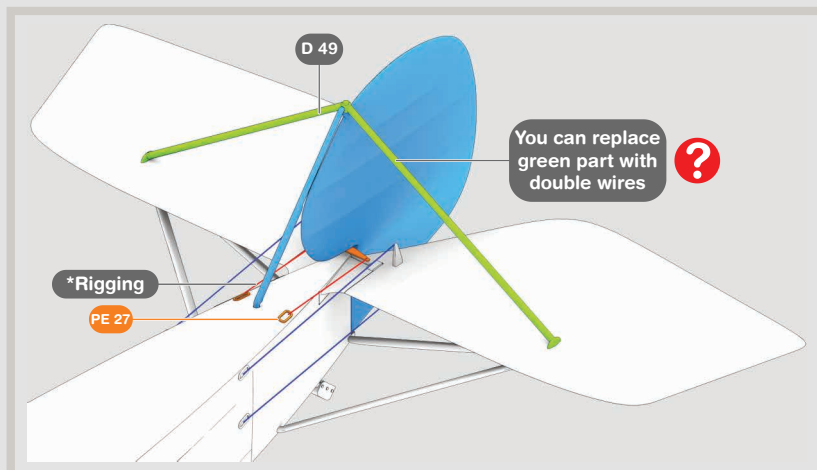
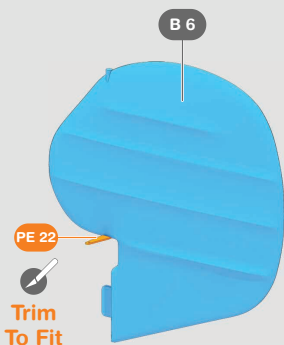
PE 23



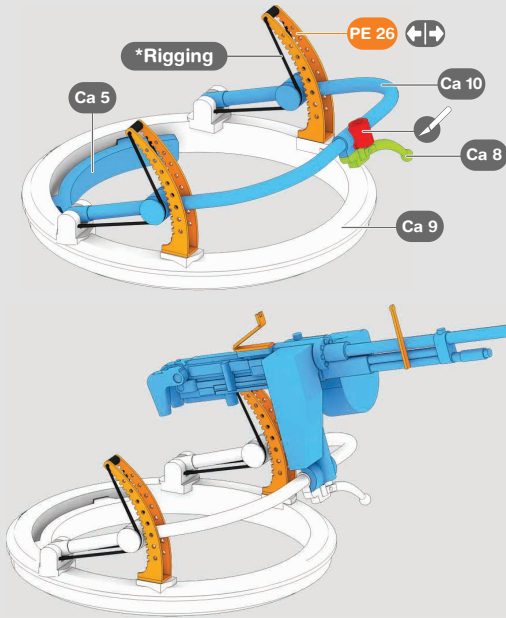
## 18 Rudder and elevator assembly



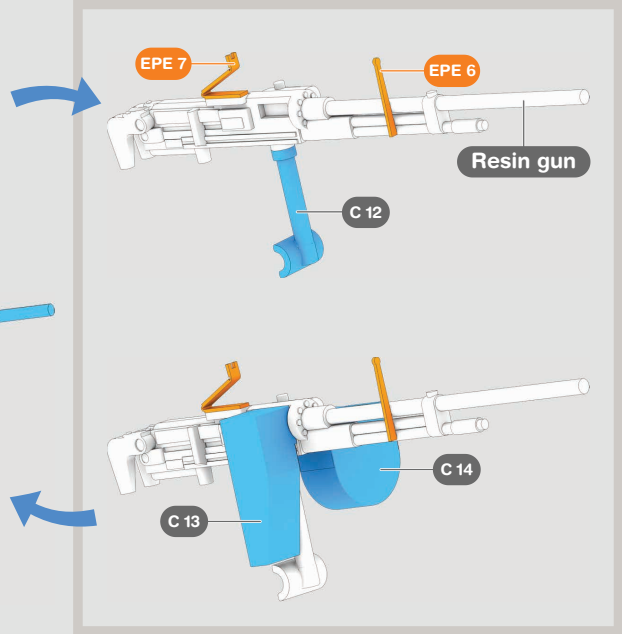
**!** USE PHOTO ETCHED SAW FOR CUTTING SMALL THIN PARTS FROM SPRUE TREE



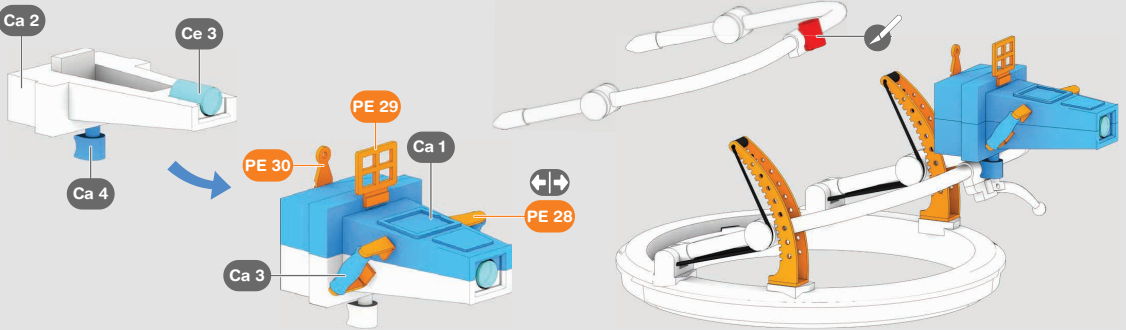
# 19 Scarfing assembly



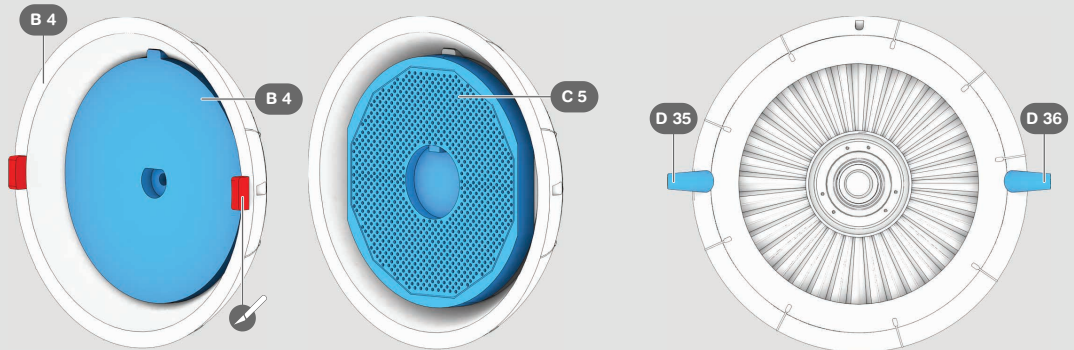
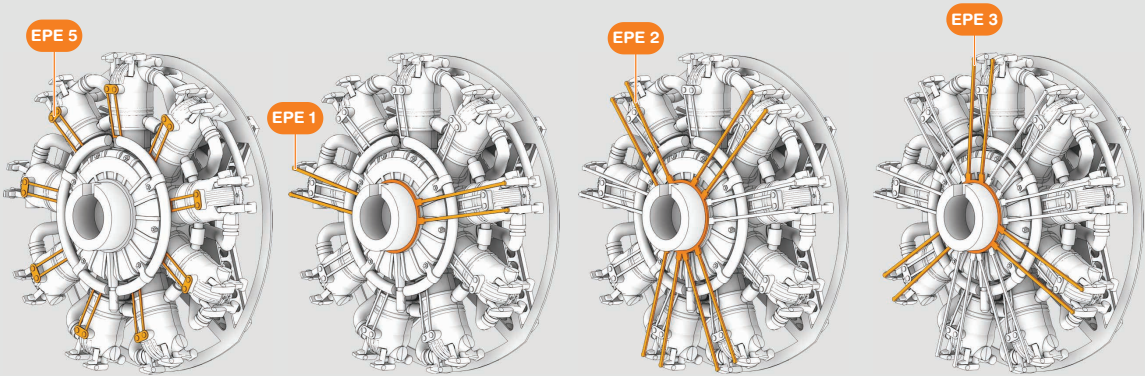
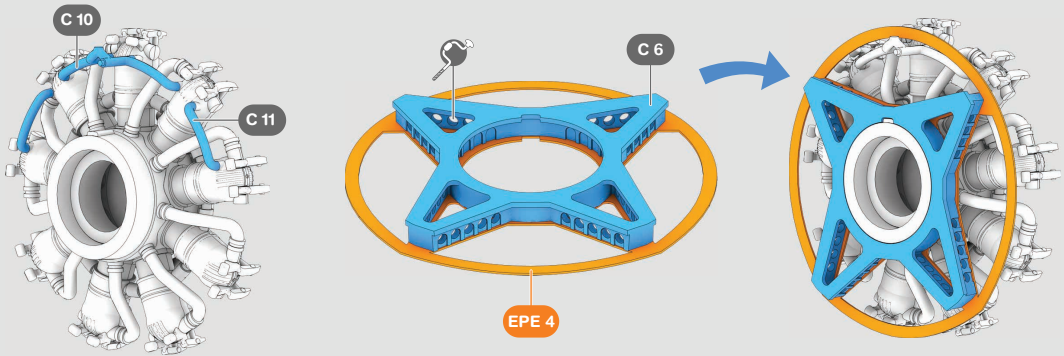
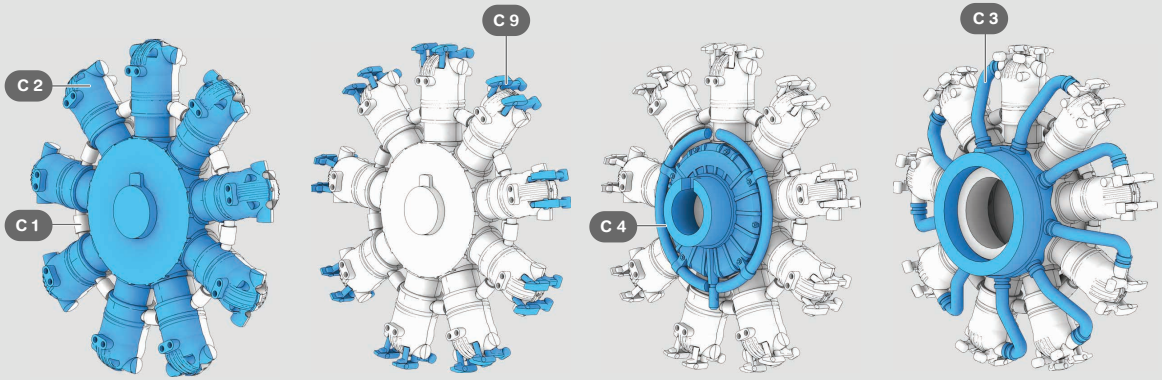
## Hotchkiss gun



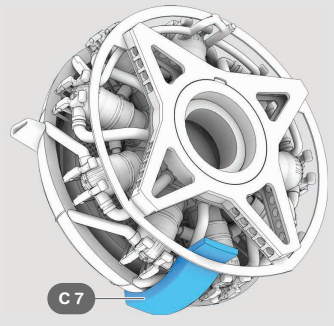
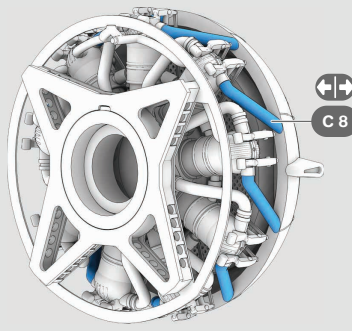
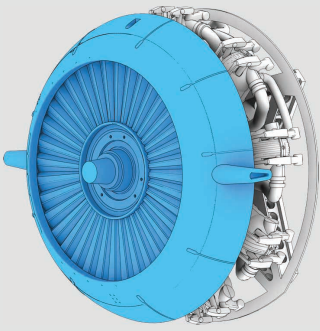
## Camera 26 cm



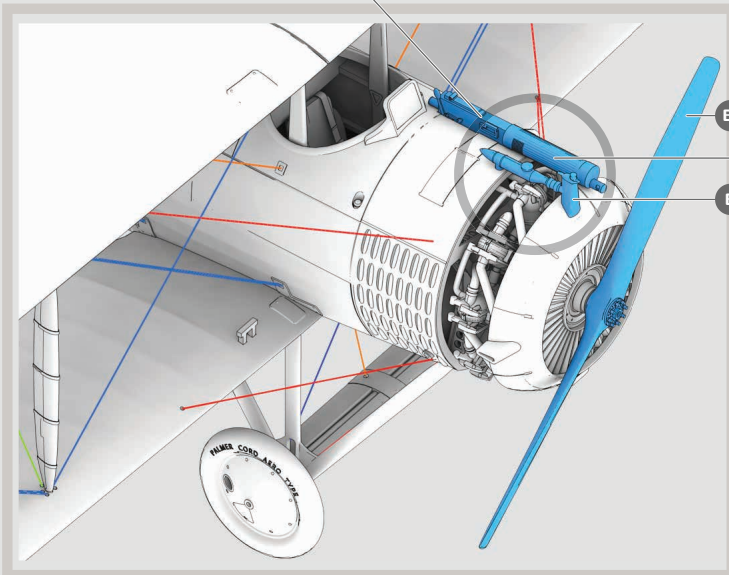
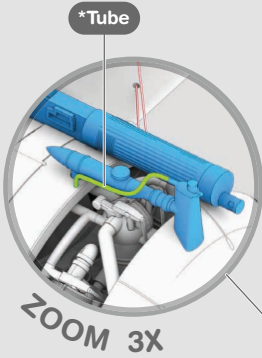
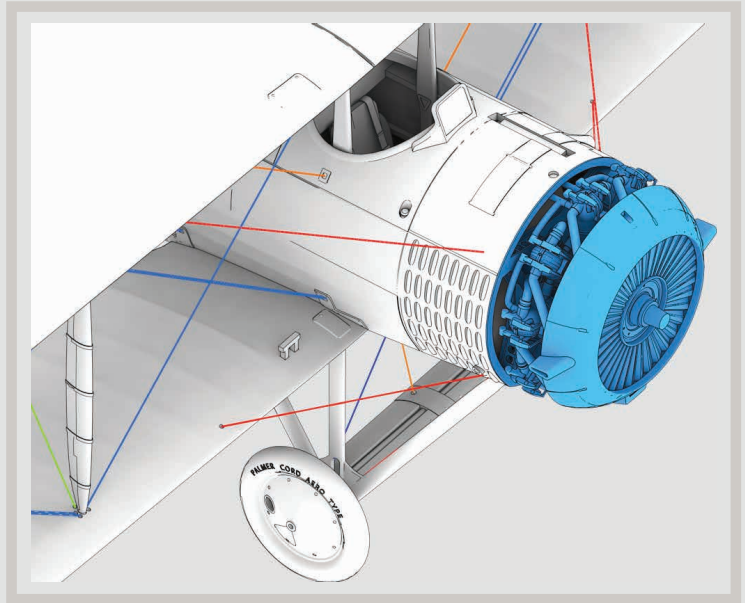
## 20 Engine 9Z assembly



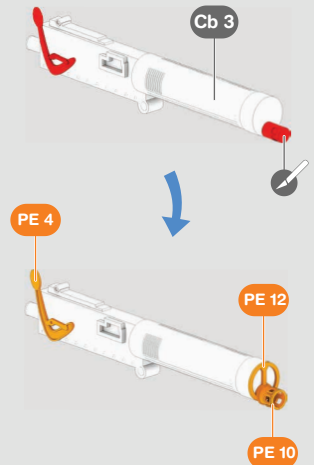




## 21 Mount the engine to the main body of the plane

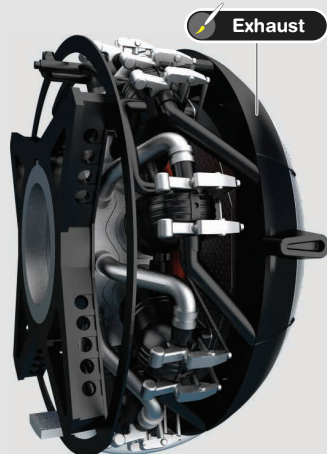
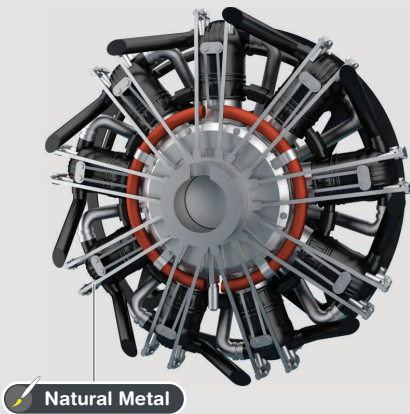
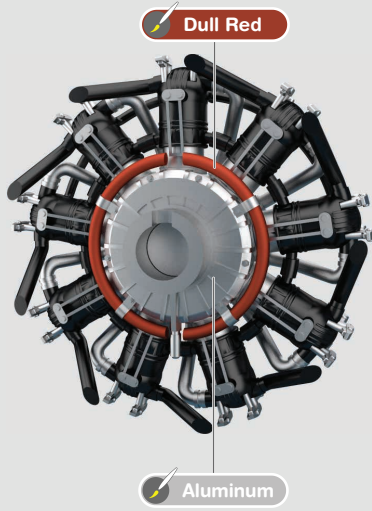


### Vickers Gun

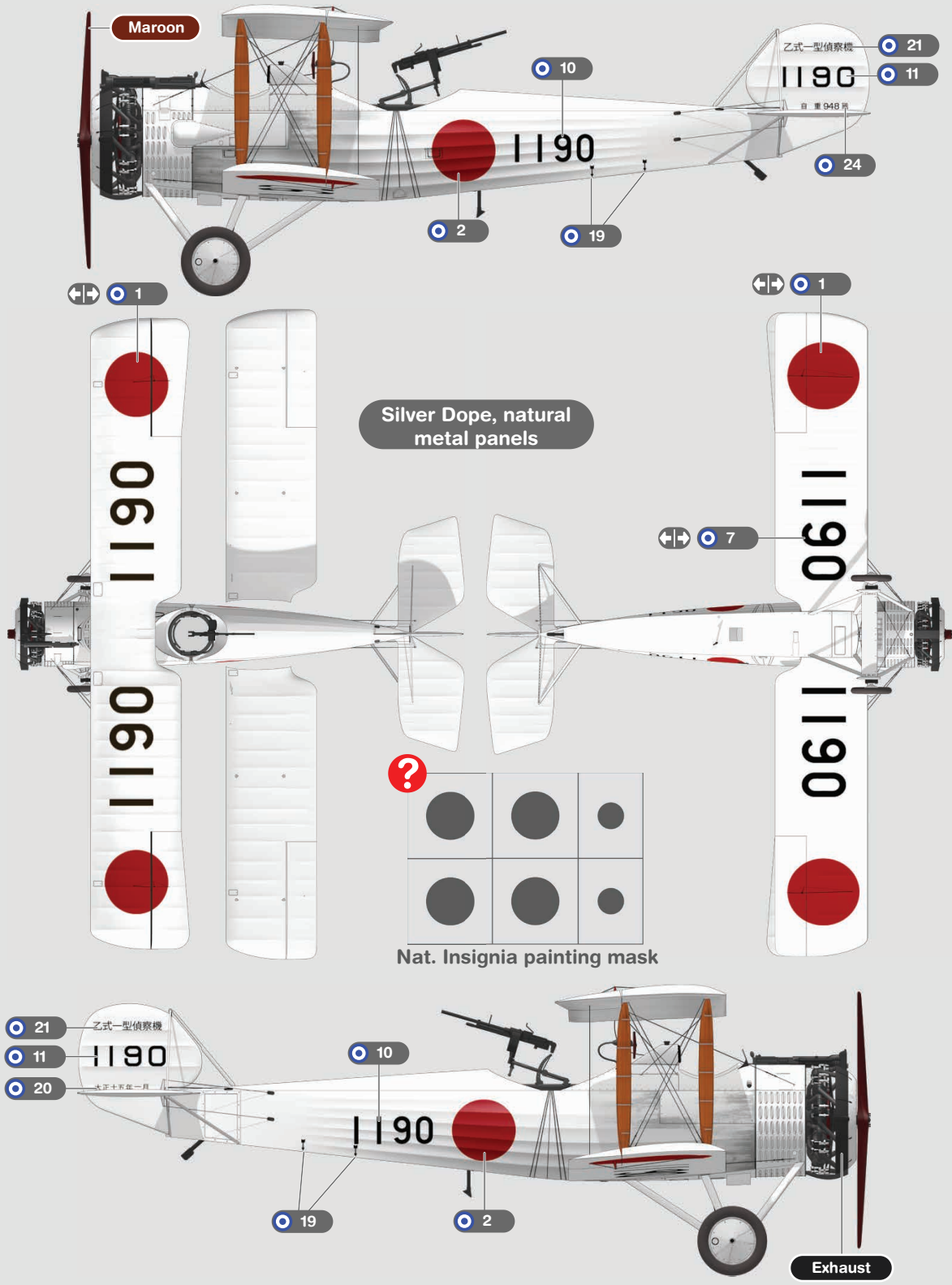


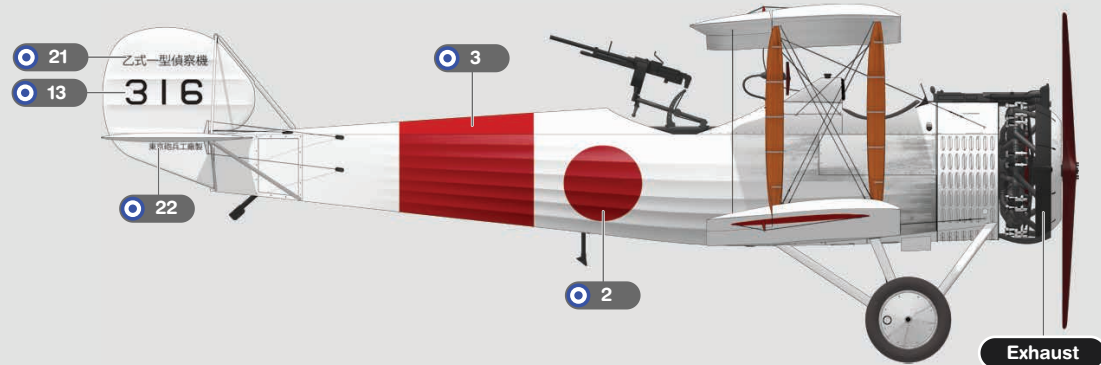
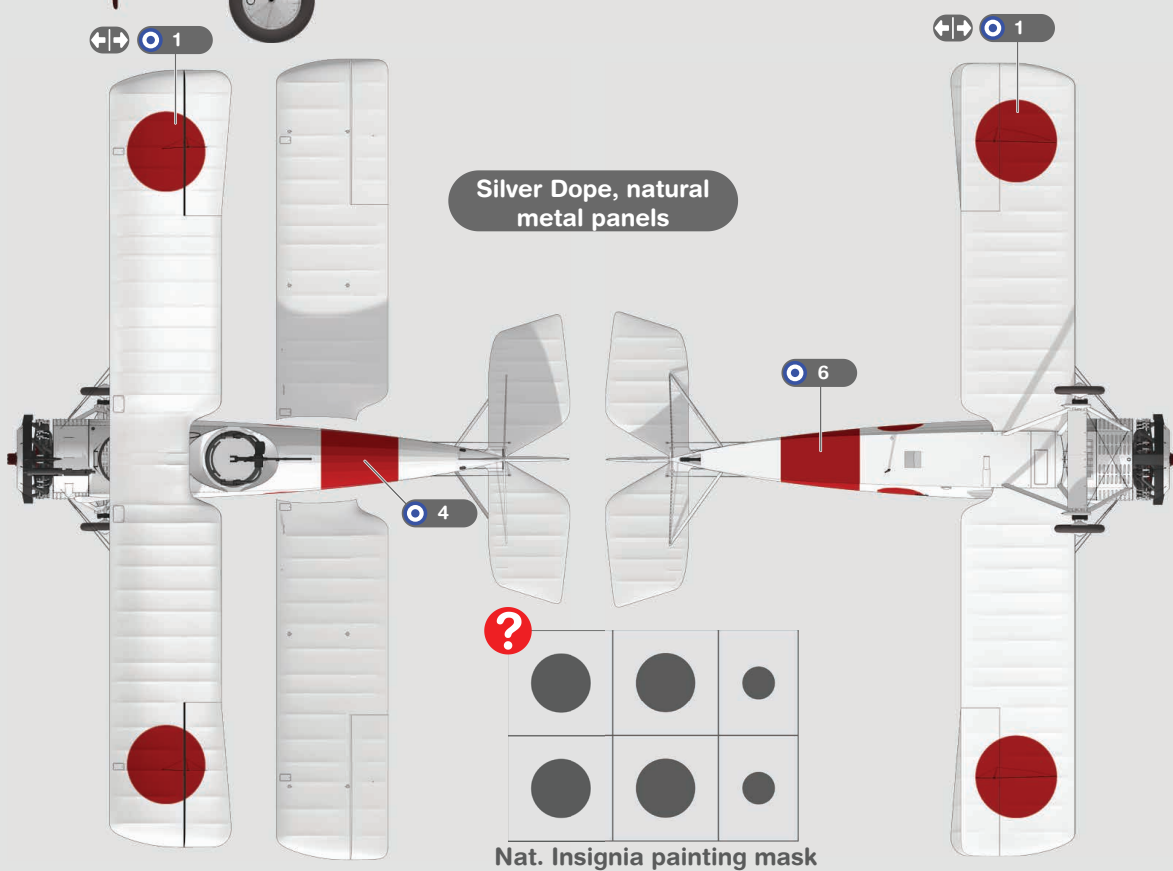
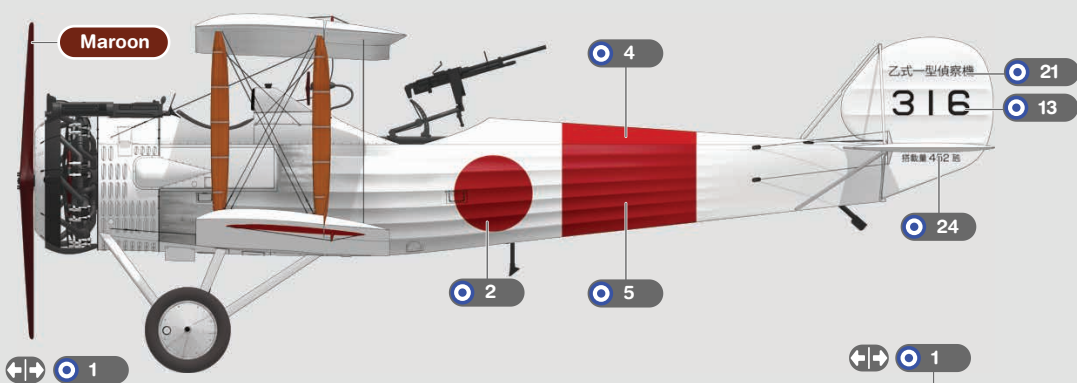


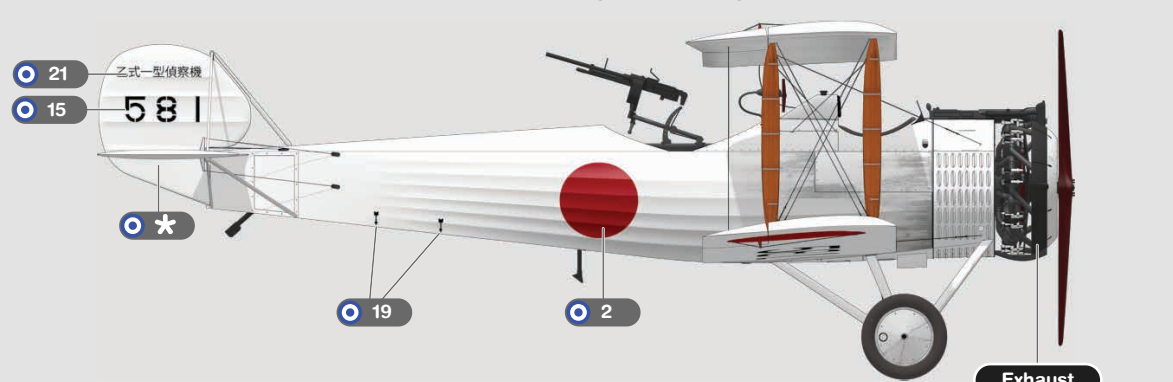
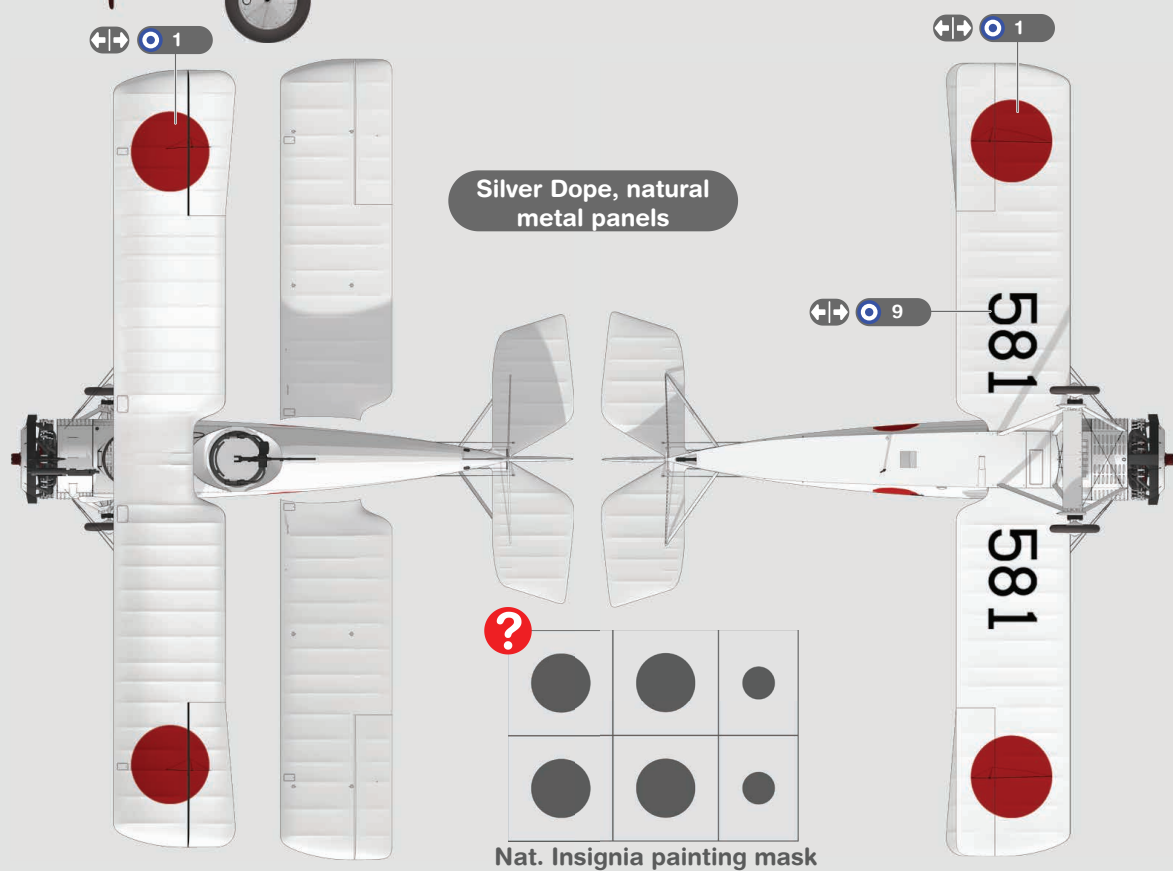
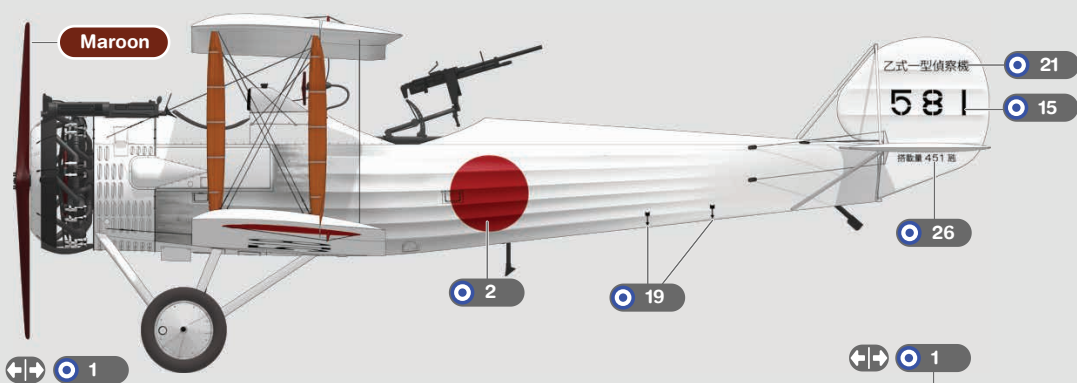
## 22 Engine paint instructions



# 23 Paint & Decal instructions

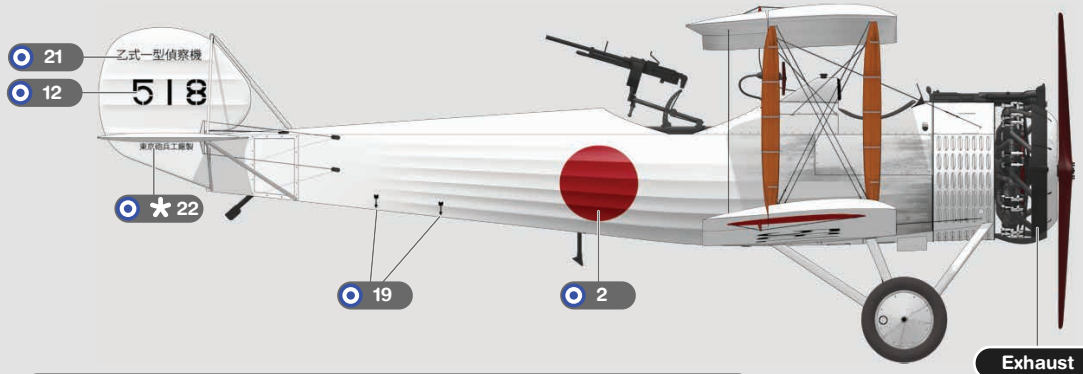
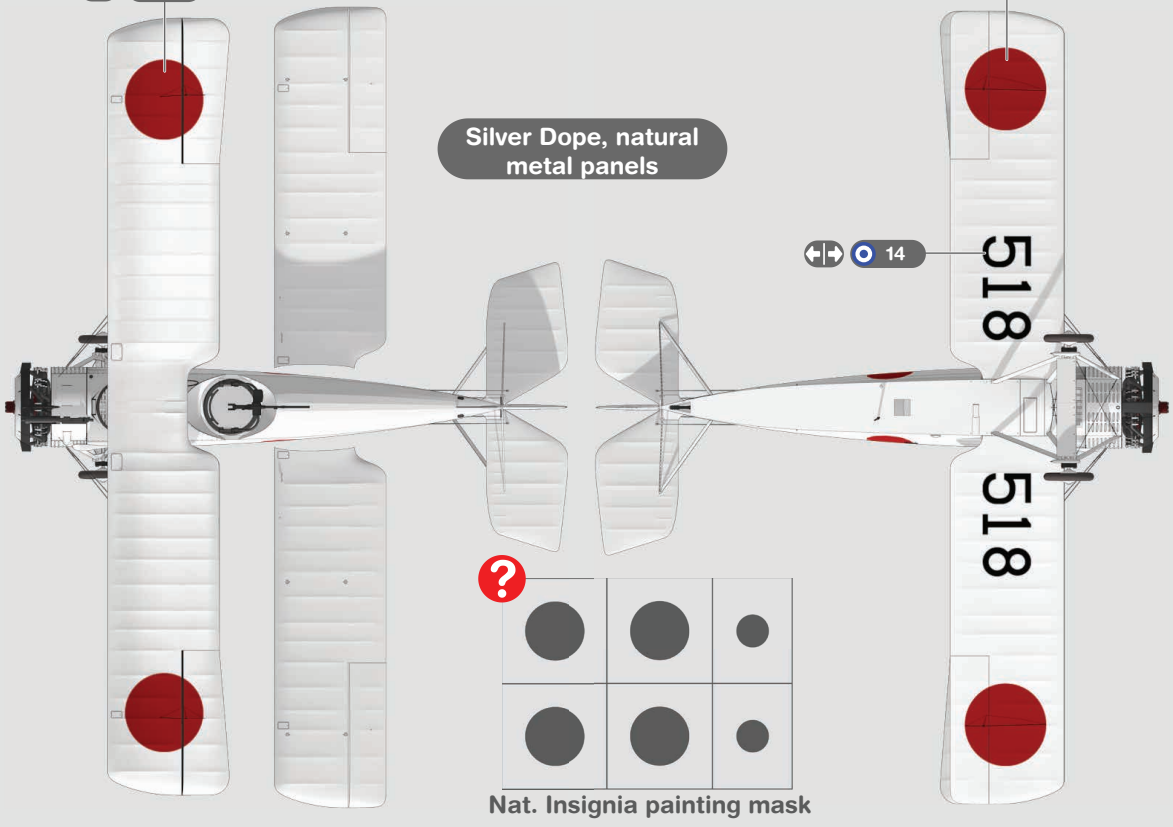
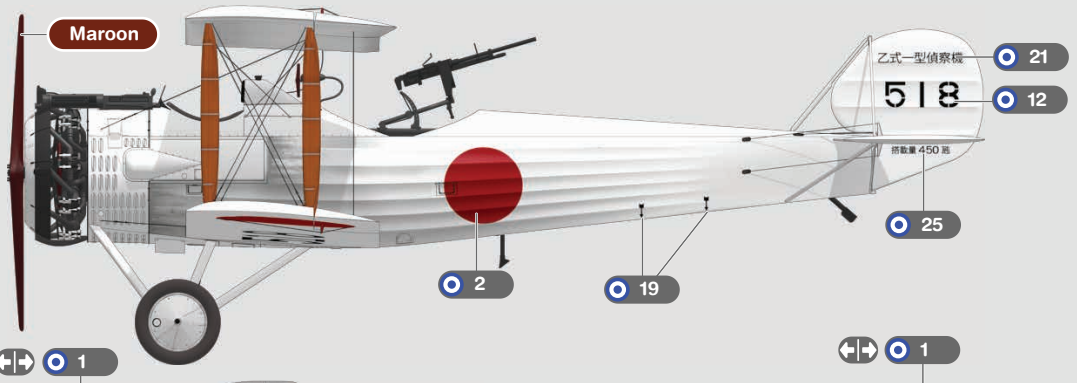




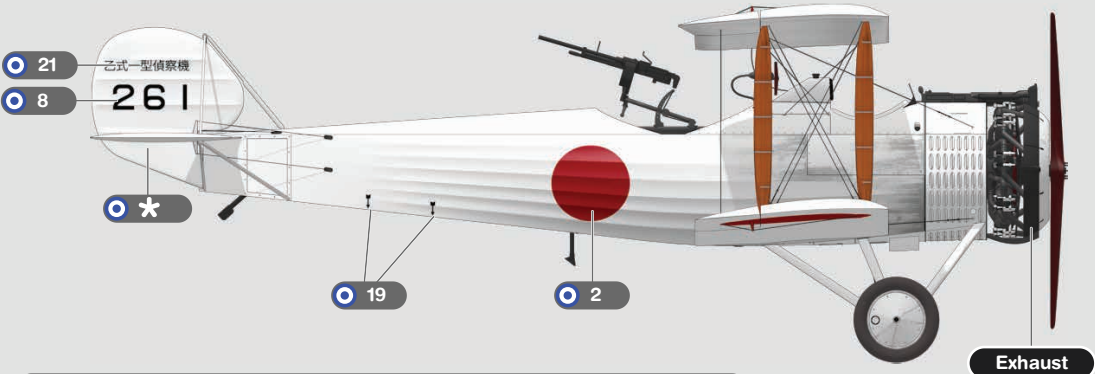
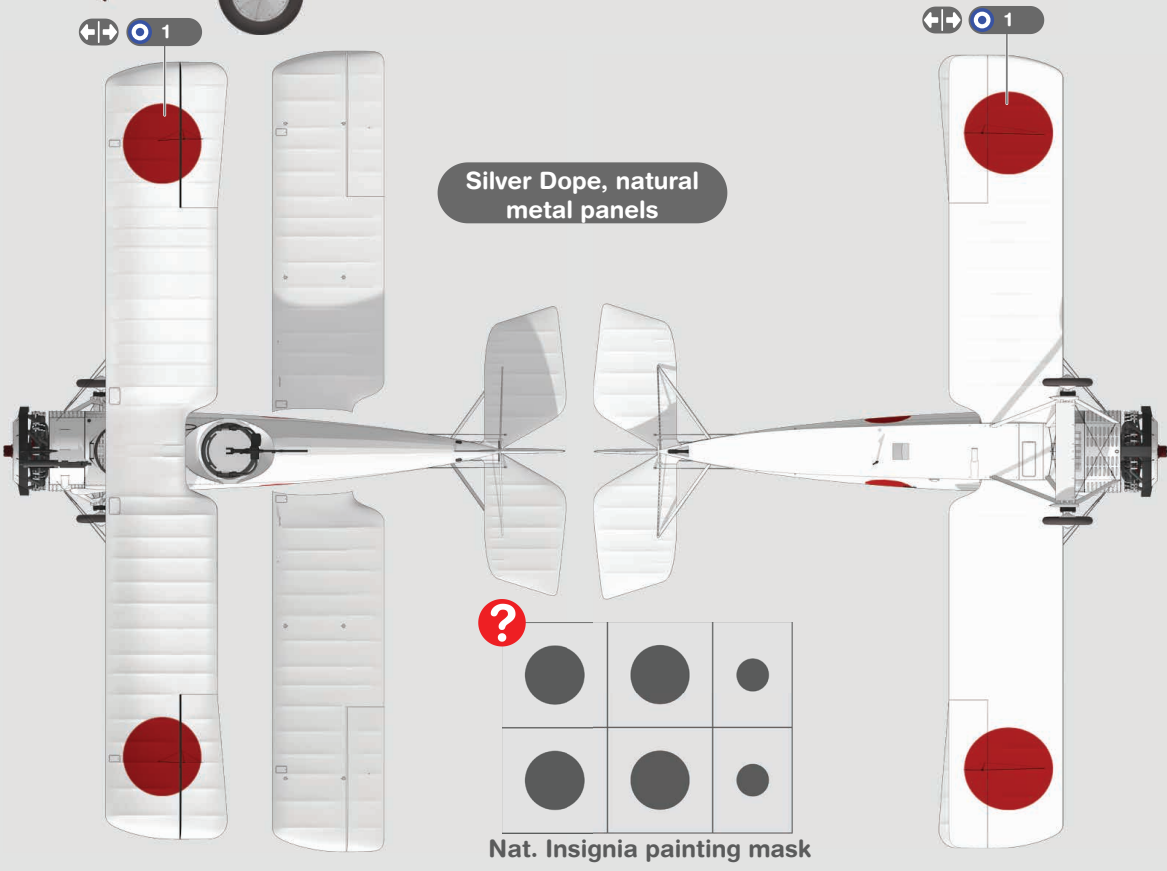
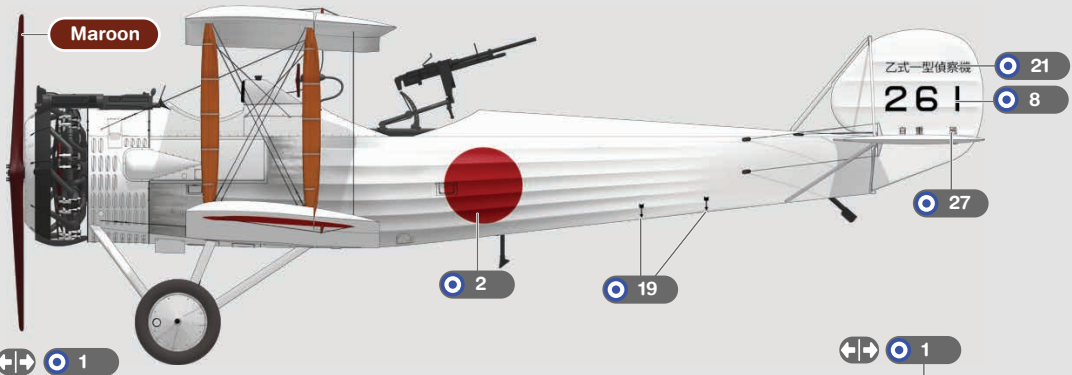


\* Decals 16 & 18 specify manufacture date, use them accordingly.

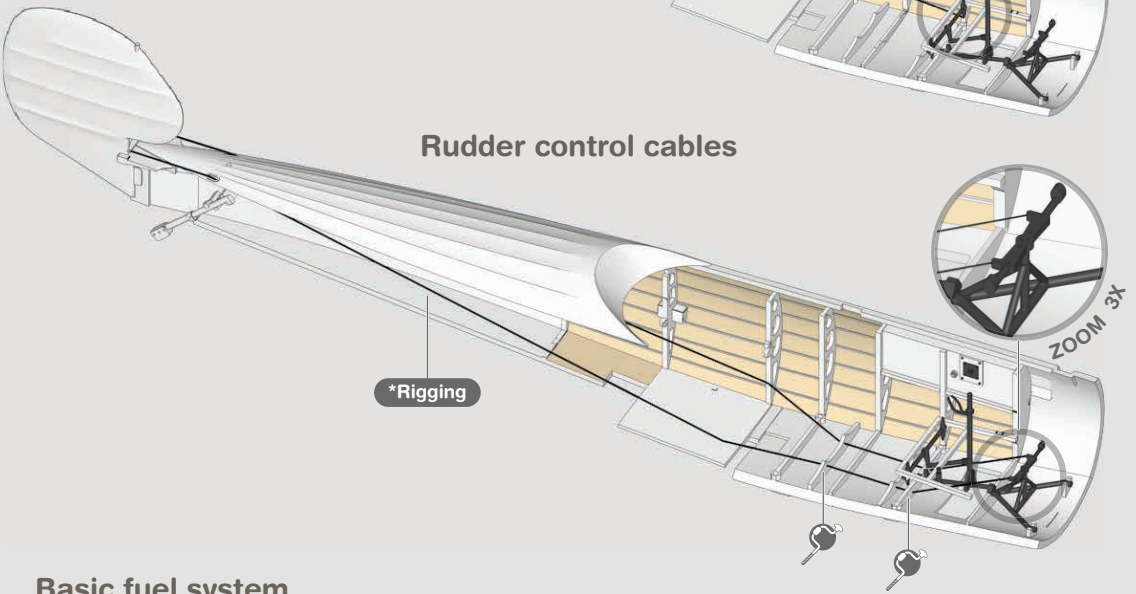
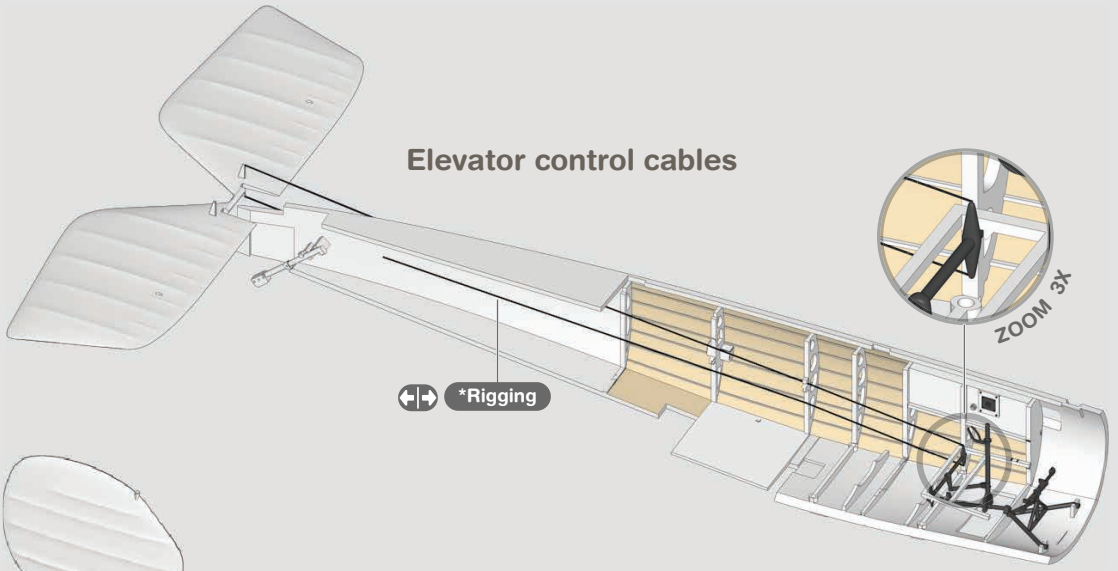




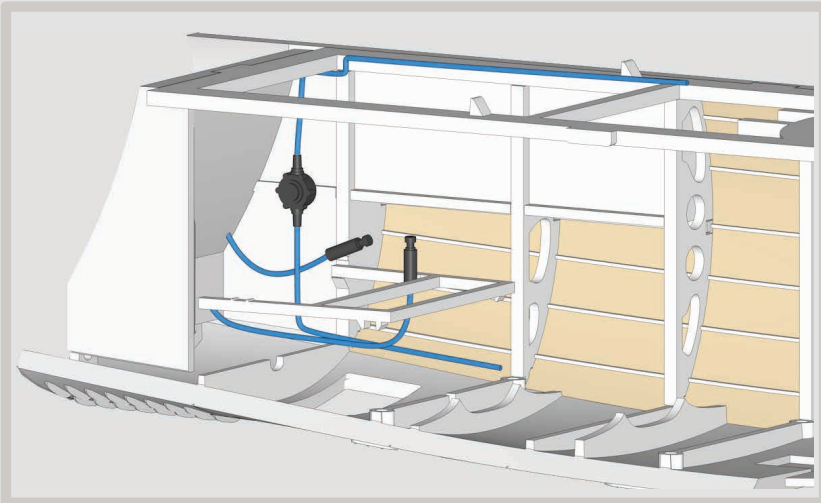
\* Decals 16 & 18 specify manufacture date, use them accordingly.



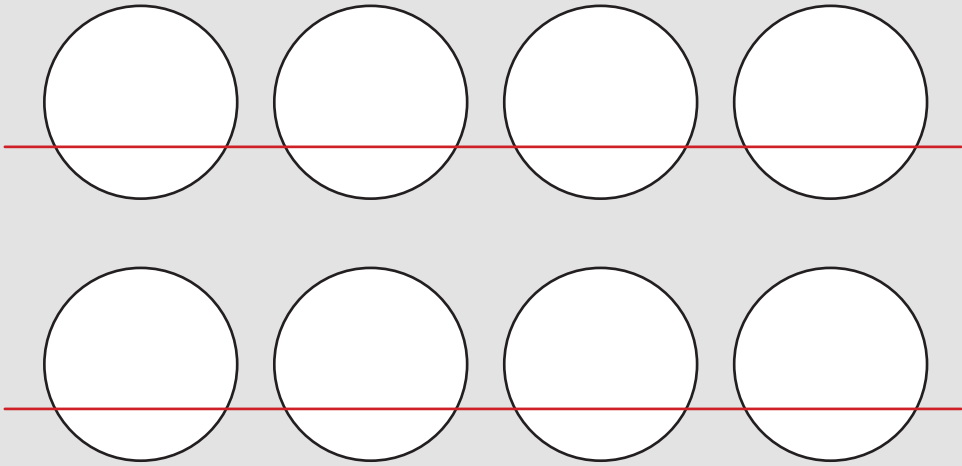
\* Decals 16 & 18 specify manufacture date, use them accordingly.



**Basic fuel system**



## Decal templates



Use the templates to cut decals. For the rudder leave half millimeter around.

Salmson 2A2 1/48 Late Type



Salmson 2A2 1/48 Mid Type



Salmson 2A2 1/48 Otsu1



Manual is also available for download from [www.gaspachmodels.com](http://www.gaspachmodels.com)