

This detail set is manufactured from photo etched brass sheet and is meant for use on the TAMIYA KIT

To separate components from the frame use a sharp modelling knife on a firm surface cutting as near to the part as possible. Tag scars can be cleaned by holding the part with a pair of pliers and using a fine file. To fold a part support up to the line of fold then fold in one go using a screw driver blade for leverage or use the E.D. brass folding tool ref. AM-22. For assembly use superglue or five minute epoxy. Prior to painting ensure that parts are thoroughly cleaned by washing in detergent and that they are primed with matt enamel paint.

The positions of parts indicated in the diagrams is for guidance only. For final position and colouration consult reference materials.

AIRWAVES are distributed:- by E.D. Models
 64 Stratford Road, Shirley, Solihull, West Midlands, B90 3LP, England.
 Telephone 0121 - 744 7488. Fax 0121 - 733 2591.

COMMANDERS SIGHT

Fold and assemble fret parts K & J and locate to the turret roof.

LOADERS HATCH STOP

Fold fret part M to shape and locate to the turret roof.

FOLDING AERIAL MOUNT

Fold and assemble fret parts N, O & P and locate to the turret in place of kit parts C1/3.

SMOKE DISCHARGER MOUNTING DETAIL

Cut away detail from kit part C33 leaving the electrical junction box. Assemble fret parts U & V and locate onto C33. Use as kit instructions.

TURRET DETAILS

For a more typical look to your Matilda replace the kit gun barrel with a "JORDIO RUBIO" TG-15 2pdr. Gun barrel. (Not included)

REAR FRONT
 * 15mm

COMMANDERS HATCH

Assemble fret parts T and locate to the rear hatch inner face.

ACTUATION PISTONS

* Note for extra detail add the hatch actuation pistons. Fabricate from plastic rod (not included) each hatch has two pistons the rear pair have leather padding blocks.

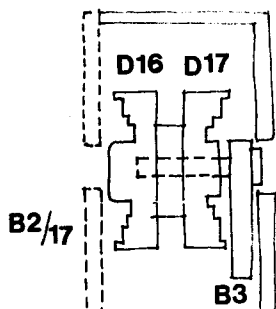
TURRET STOWAGE RACK STRAP DETAIL

Anneal fret parts H&R to allow the forming of natural shapes for the straps. Locate to the turret side and the stowage carrier. Note the moulded carrier cross members should be cut away. ■

FLAG STORAGE TUBE

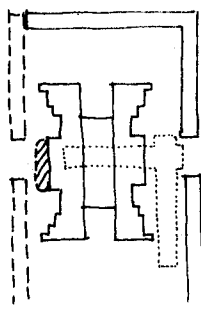
Form the tube support straps fret parts L and locate to the kit parts C11/12. Fold cap straps fret parts I and locate to the tube lid.

TRACK TENSIONING DETAIL REF. STAGE



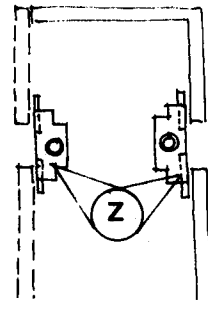
SECTION OF IDLER WHEEL assembled as kit instructions- for reference purposes only.

STAGE ONE



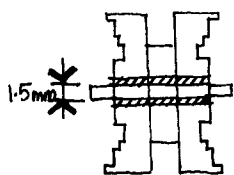
SECTION OF IDLER WHEEL
a. Omit kit parts B3
b. Cut/sand the outer boss off kit part D16

STAGE TWO



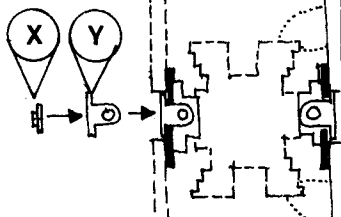
a. Fold fret part Z to shape
b. Locate to hull and side skirt

STAGE THREE



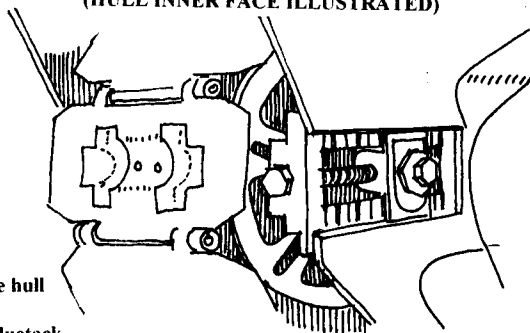
a. Drill the axle completely through the wheel
b. Sleeve the hole for a 1.5mm axle (not incl.)
c. Fit a 1.5mm plastic/metal axle (not incl.)

STAGE FOUR

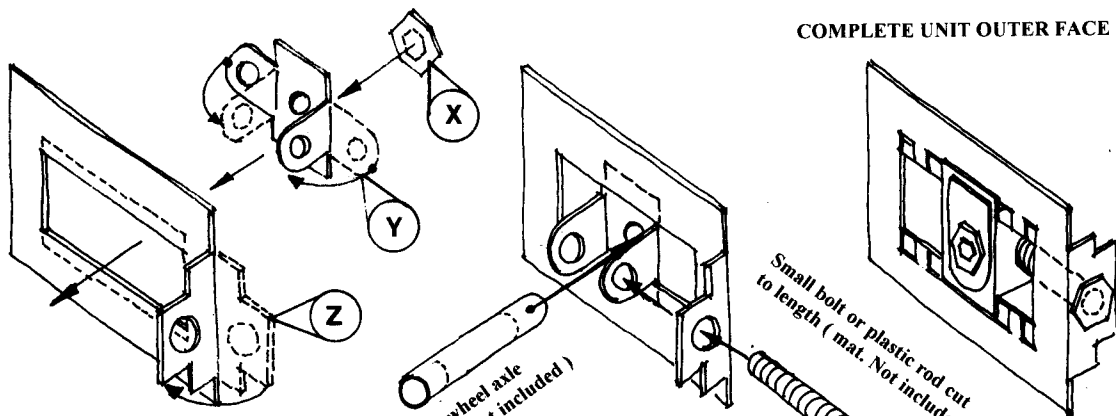


a. Form / locate fret parts Y/X to the hull inner side slot.
b. Fix the idler wheel. To hold, use bluetack
c. Fit tensioning bars between fret parts Z / Y use plastic rod or a small bolt cut to size.
d. Repeat for sideskirt. Add bolts X to complete.

SKETCH VIEW ON COMPLETE UNIT (HULL INNER FACE ILLUSTRATED)



COMPLETE UNIT OUTER FACE VIEW



FRET PART ASSEMBLY / SHAPING
VIEW FROM INNER FACE OF FRET

Idler wheel axle
(mat. Not included)

Small bolt or plastic rod cut to length (mat. Not include)

SPARE TRACK RACKS

Fold fret parts Q to shape (four number) add bolt heads and locate in place of kit parts D9.

FOR REFERENCES SEE:-

The Matilda, Bryan Perrett.
Ian Allen Publications.

Matilda Inf. Tank 1938-45
D. Fletcher, D. Sarson
Osprey New Vanguard.