

SET AFV 35-052 **AIRWAVES** ©
M113 'ISRAELI' FITTINGS

This detail set is manufactured from photo etched brass sheet and is meant for use on the ITALERI, TAMIYA and ACADEMY kits
To separate components from the frame use a sharp modelling knife on a firm surface cutting as near to the part as possible. Tag scars can be cleaned by holding the part with a pair of pliers and using a fine file. To fold a part support up to the line of fold then fold in one go using a screw driver blade for leverage or use the E.D. brass folding tool ref. AM-22.
For assembly use superglue or five minute epoxy. Prior to painting ensure that parts are thoroughly cleaned by washing in detergent and that they are primed with matt enamel paint.

The positions of parts indicated in the diagrams is for guidance only.

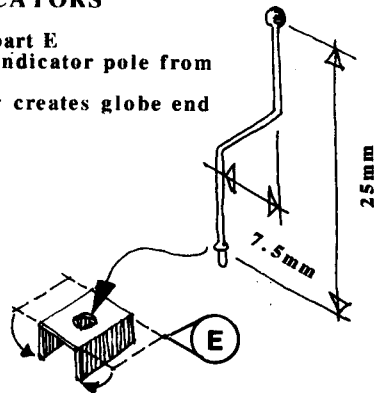
For final position and colouration consult reference materials.

Airwaves are distributed:- by E.D. Models

64 Stratford Road, Shirley, Solihull, We. Midlands, B90 3LP, England.
Telephone 0121 - 744 7488. Fax 0121 - 733 2591.

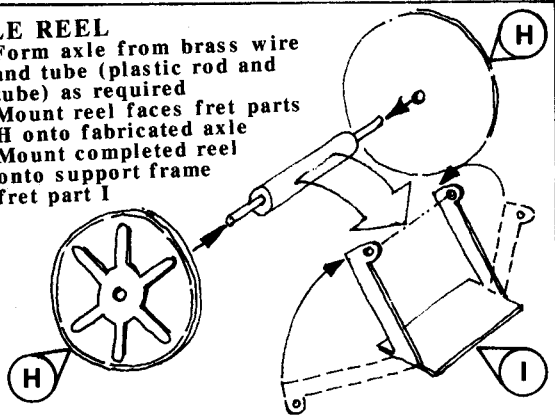
WIDTH INDICATORS

- Fold fret part E
- Fabricate indicator pole from brass wire
- Body putty creates globe end



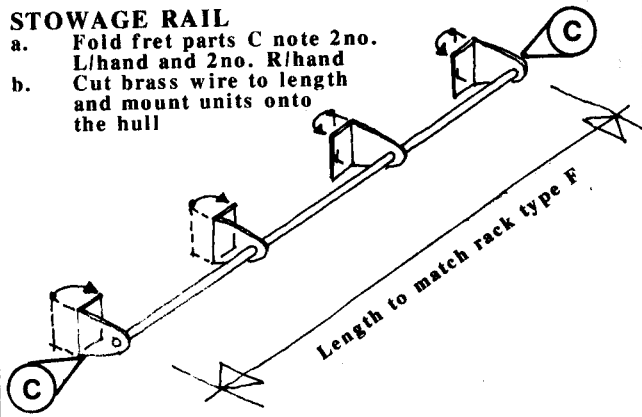
CABLE REEL

- Form axle from brass wire and tube (plastic rod and tube) as required
- Mount reel faces fret parts H onto fabricated axle
- Mount completed reel onto support frame fret part I

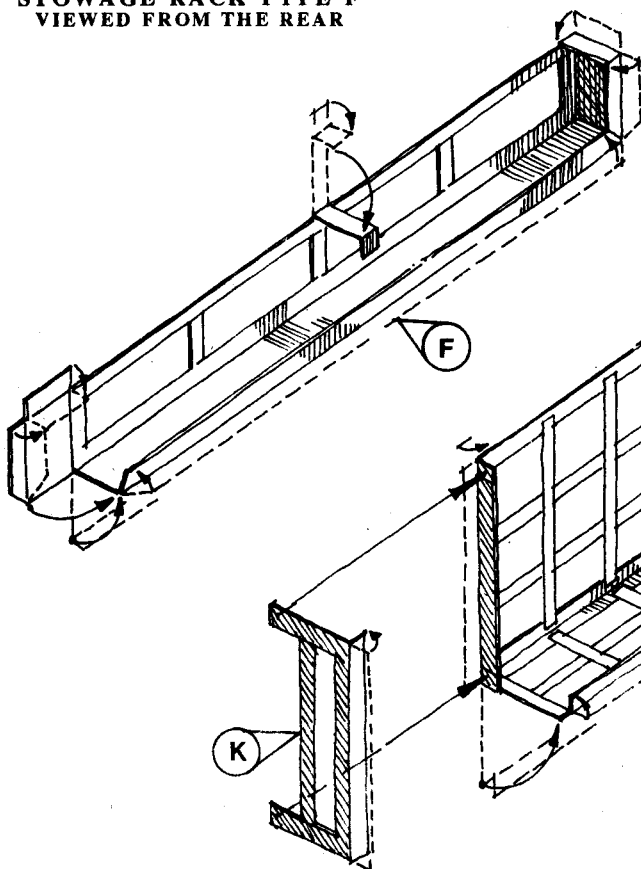


STOWAGE RAIL

- Fold fret parts C note 2no. L/hand and 2no. R/hand
- Cut brass wire to length and mount units onto the hull

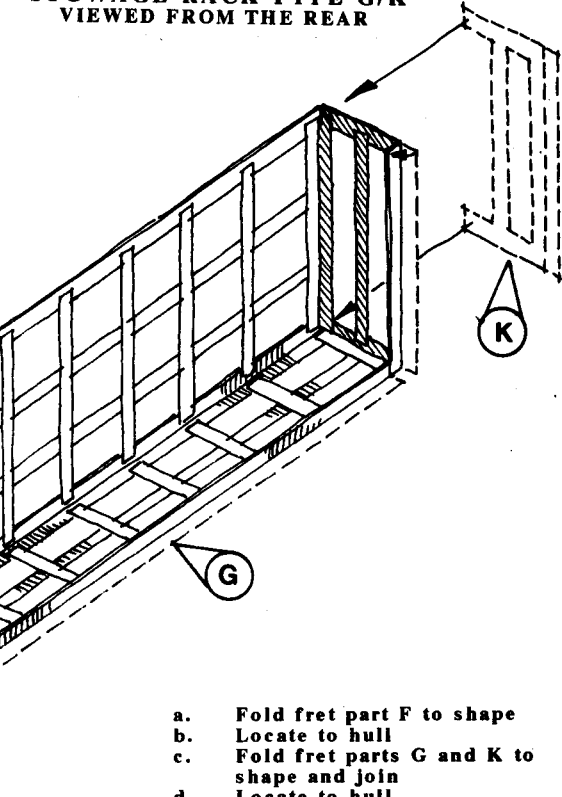


**STOWAGE RACK TYPE F
VIEWED FROM THE REAR**

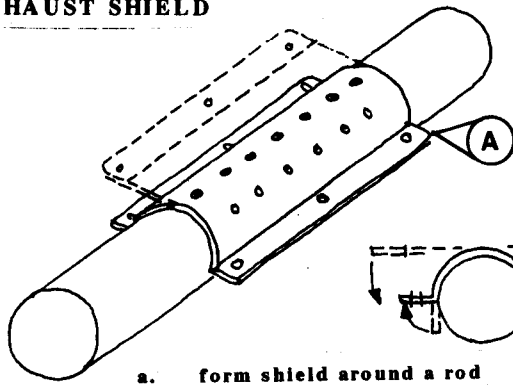


**STOWAGE RACK TYPE G/K
VIEWED FROM THE REAR**

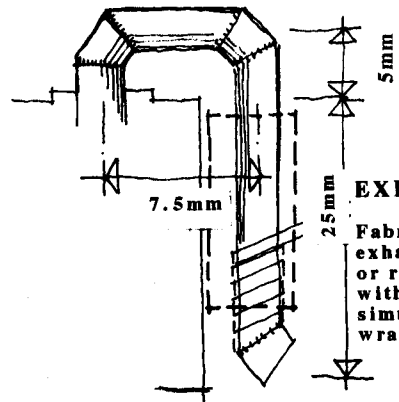
- Fold fret part F to shape
- Locate to hull
- Fold fret parts G and K to shape and join
- Locate to hull



EXHAUST SHIELD



a. form shield around a rod or tube of suitable diam.

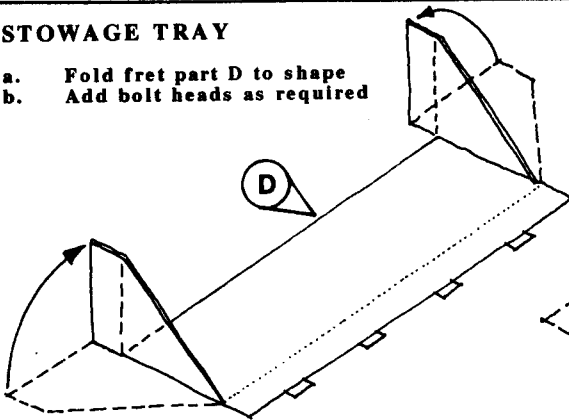


EXHAUST PIPE

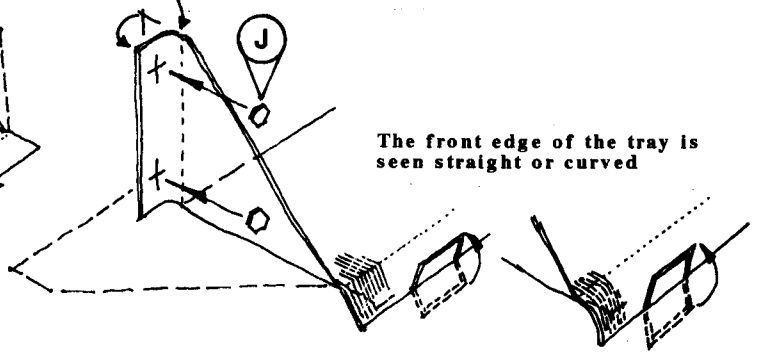
Fabricate new style exhaust from sprue or rod. Wrap the tube with masking tape to simulate insulation wrapping

STORAGE TRAY

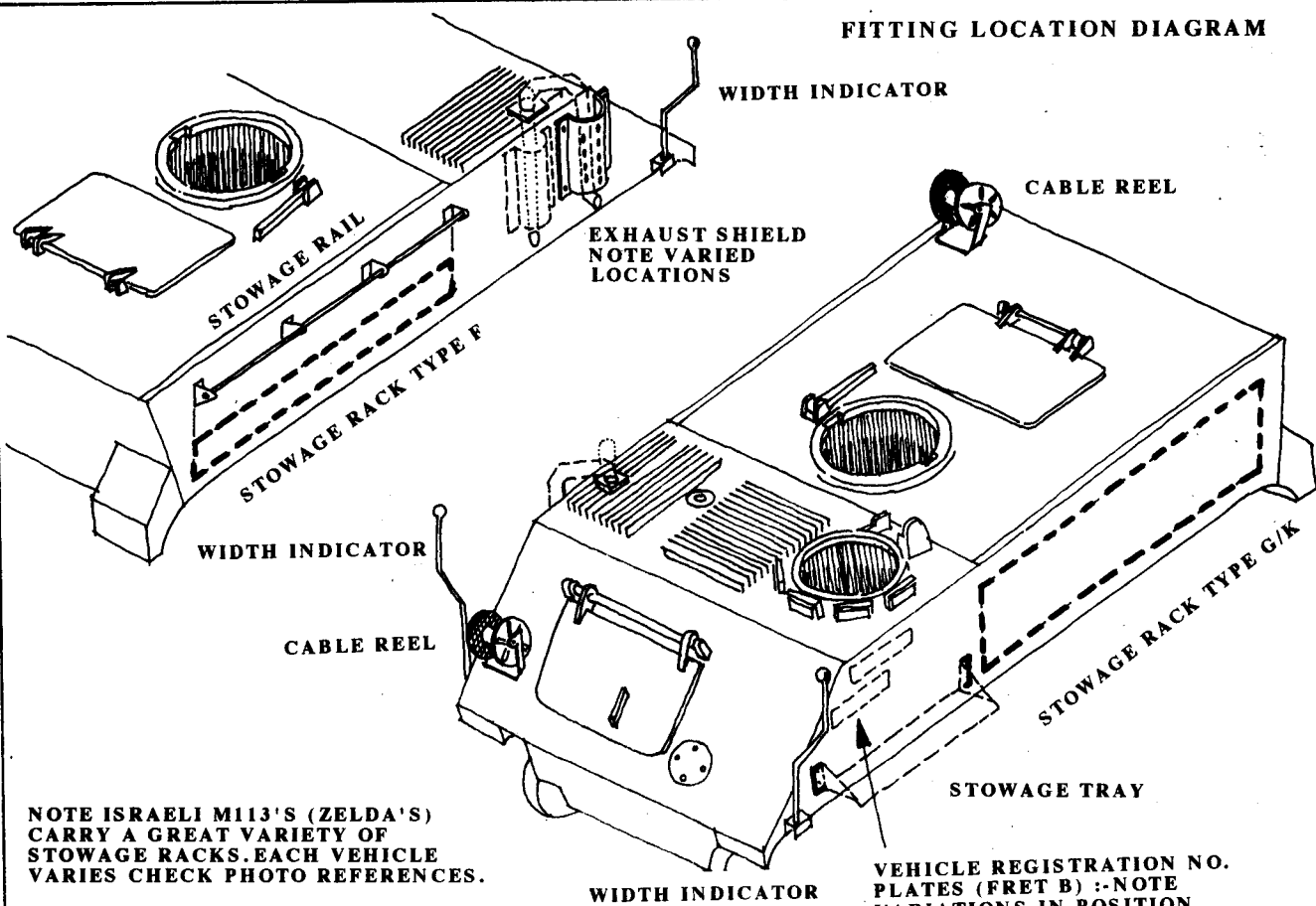
- a. Fold fret part D to shape
- b. Add bolt heads as required



Note the hull fixing faces have a gentle curve not a sharp fold



FITTING LOCATION DIAGRAM



NOTE ISRAELI M113'S (ZELDA'S) CARRY A GREAT VARIETY OF STORAGE RACKS. EACH VEHICLE VARIES CHECK PHOTO REFERENCES.

TRY THE AIRWAVES SET 35-015 !

VEHICLE REGISTRATION NO. PLATES (FRET B) :-NOTE VARIATIONS IN POSITION