



Bronco Models

# U.S.M-24 "Chaffee" Light Tank In Korean War

1/35 SCALE

## 韩战之美军 M-24 "霞飞" 轻坦克



The US Army entered WWII with the M3 Stuart Light Tank, which worked well, but was tall and noisy. Not ideal features of a reconnaissance vehicle and not rectified in the later M5 series. A new Light Tank was specified in 1943 using the M5 powertrain, but with a sleek new hull and turret. This was to emerge as the Light Tank M24. The noisy VVSS was replaced with a new torsion bar suspension, and weight was kept to 20 tons. Firepower was greatly increased by mounting a light weight 75mm gun using the same ammunition as the M4 Sherman. The M24 was well received by its crews, but it arrived too late to see much action, the first tanks arriving in Europe by November 1944. A few were passed on to the British and Free French before the war ended. Armour was up to 25mm thick and the road speed up to 56km/h, maximum road range was 161 kilometers. A total of 4,731 M24's were built by the end of WWII. The chassis was used for a whole range of Self-Propelled Guns and weapon carriers.

Short Story by Phil Greenwood

Bei Kriegseintritt hatte die US Army den leichten Panzer M3 Stuart (37mm Geschütz) im Arsenal. Das Fahrzeug war zuverlässig, aber laut und eng. Letzteres war nicht unbedingt vorteilhaft für einen Spähpanzer und konnte auch durch die folgenden M5 Typen nicht behoben werden. 1943 wurde ein neuer leichter Panzer geplant, welcher den M5 Antrieb beibehalten sollte. Das Ergebnis war der leichte Panzer M24. Er war bis zu 25mm gepanzert und max. 56 km/h schnell bei einer Reichweite von 161 km. Die laute VVSS Federung ersetzte man durch eine Drehstabfederung, das Gewicht blieb unter 20 Tonnen. Die Feuerkraft stieg immens, die Bewaffnung bestand nun aus einer 75mm Kanone, welche M4 Sherman Munition verschießen konnte. Der M24 wurde von der Truppe sehr begrüßt, kam aber zu spät für größere Kampfeinsätze. Denn die ersten Lieferungen erreichten Europa im November 1944. Einige übergab man den britischen und freien französischen Einheiten bis Kriegsende. Die Produktion belief sich auf 4731 Stück. Das Chassis war auch die Basis einiger Selbstfahrlafetten und Versuchsfahrzeuge.

© Translation Michael Knoblich Academy Europe

美军在二次大战初期投入之 M3 "斯图尔特" 轻型坦克虽然操作良好, 但可惜是车身高及噪音太大, 这种种不利于作为侦察用途的因素在其后所改良之 M5 系列仍没被矫正过来。但一辆全新外形之轻型坦克在 1943 年却被设计出来, 其仍使用 M5 原来之动力系统但是有一个全新的车身和炮塔。由于 M24 主要设计目的是作为轻型坦克。设计师把 M5 原有极易产生噪音的 VVSS 悬挂系统替换为新的扭力悬挂系统, 并且将其重量保持为 20 吨。火力方面装上一门轻量化之 75mm 火炮, 使其同样可使用和 M4 谢尔曼一样的弹药。M24 深受其乘员组所欢迎, 但它在大战的后期才登场显得有点太迟了, 在战争结束前之 1944 年 11 月, 第一辆 "霞飞" 坦克才送抵欧洲战场。当时有少量之 M24 "霞飞" 被移交给英军和自由法军部队使用。M24 装甲约为 25 毫米厚, 路上最高时速为 56 公里, 最大行走半径是 161 公里。M24 从二战后期开始生产, 总共有 4,731 台被生产了出来。其后其底盘更被设计作为各式各样的自走炮和装载武器车辆使用。

# ILLUSTRATION 图示说明:

## CORRECT METHOD FOR APPLYING DECALS : HINWEISE ZUM ANBRINGEN DER DECALS

### 正确使用水贴纸的方法:

1. Clean model parts surface with wet cloth. Entsprechende Stellen am Modell feucht reinigen.  
将需要贴水贴之部位表面擦干净。
2. Cut out the decal parts and dip them in cold water for 15-20 seconds. Decal ausschneiden und für 15-20 Sek. ins Wasser legen.  
将所需之贴纸剪下泡在清水里约15至20秒。
3. Place it on correct position of the model kit. Decal an der richtigen Stelle auflagen.  
将湿透之贴纸取出置放于正确之位置旁。
4. Slide off the decal from the base paper on to the model kit surface with a cotton stick. Decal mit Wattestäbchen festhalten und Papier darunter wegziehen.  
用棉花棒轻推贴纸表面使其从底纸滑出至模型表面之正确位置。
5. When decal get dry then complete. Decal mit Papiertuch andrücken und trocknen.  
待其自然干透后即完成。

## ICON INSTRUCTION: 图标说明:



Open Hole  
Loch bohren  
钻孔



Remove  
Abtrennen  
切除



x2 2 Sets needed  
Vorgang wiederholen  
同样的制作二组



Bend  
Biegen  
曲折



Optional  
Auswahl  
可以选择采用



Apply Decal  
Decal anbringen  
贴水贴纸



Instant Glue For Metal  
Sekundenkleber verwenden  
瞬间接着剂, 金属用



Fill Hole  
Verspachteln  
把孔填平



Do not cement  
Nicht kleben  
不用粘合

## COLOR SUGGESTION: FARBTABELLE: 涂装指引:

Color	涂料表	MR. Hobby	Hobby Color	Humbrol	Tamiya
Steel	Stahl 黑铁色	H-18	C-28	53	/
Flat black	消光黑	H-12	C-33	33	XF-1
Silver	Silber 银色	H-8	J-8	11	X-11
Wood brown	Holzbraun 木棕色	H-37	C-48	/	/
Clear red	Klar-rot 透明红	/	/	/	XF-65
Olive drab	Oliv draun 橄榄褐	H-78	C-38	66	XF-62
Tyre black	Reifenschwarz 轮胎黑	H-77	C-137	85	/
Semi-gloss black	Schwarz Seidenmatt 半光黑色	/	C-82	/	/
Olive drab	Oliv draun 橄榄绿	H-78	C-38	66	XF-62
Gray	灰色	H-325	C-325	/	/
Earth	土黄色	/	C-133	/	/

## READ BEFORE ASSEMBLING: VOR ZUSAMMENBAU LESEN: 组装必读:

- Carefully Study instruction before assembling. Anleitung studieren und verständlich machen. 组装前请阅读清楚制作指引。
- Keep plastic model glue and tools away from children. Kleber, Farben, Werkzeuge und Plastiktüten von Kindern fernhalten. 胶水, 油漆及工具勿让小孩接触。
- Do not use cement or paint near open flame or sparks. Kleber/Farbe nicht in Nähe von offenen Flammen. 胶水及油漆勿接触火种。
- Do not work in closed room. Nur in ausreichend belüfteten Räumen arbeiten. 勿在密封地方制作模型。

# PARTS LIST 零件展示表:

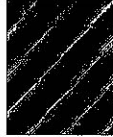


**Bronco Models**

Copyright © 2012

Made in China

中国制造

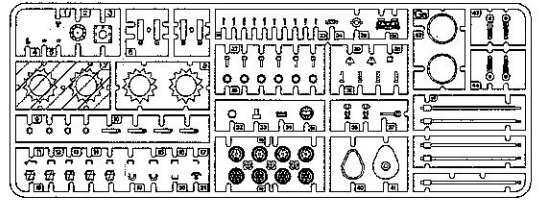


No use parts  
不要部件

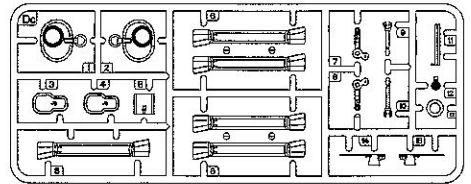
String  
绳子



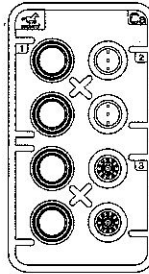
Ⓒa × 2



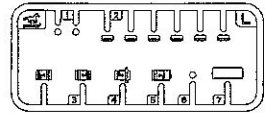
Ⓒc × 1



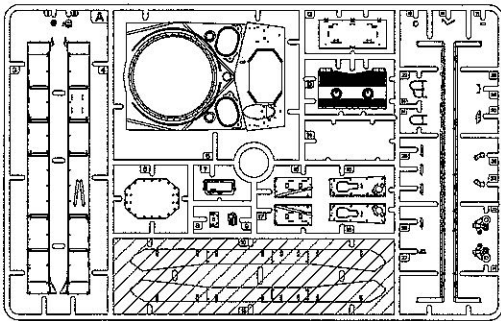
Ⓒa × 5



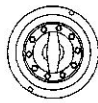
Ⓒl × 1



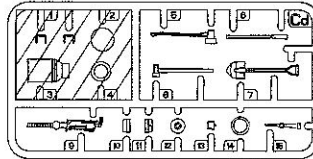
ⒸA × 1



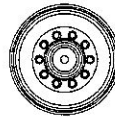
ⒸI × 2



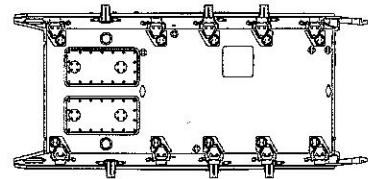
Ⓒd × 1



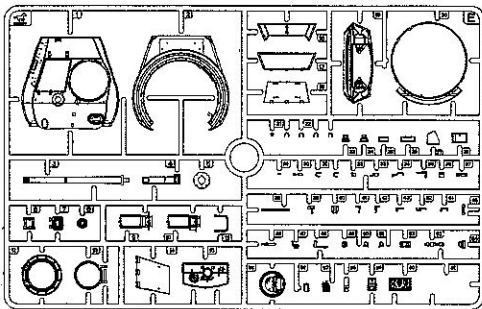
ⒸK × 2



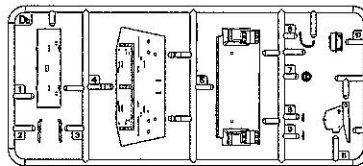
ⒸM × 1



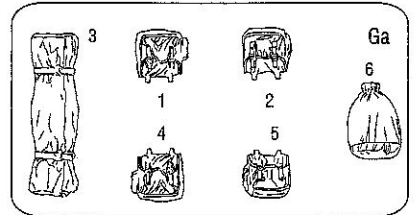
ⒸE × 1



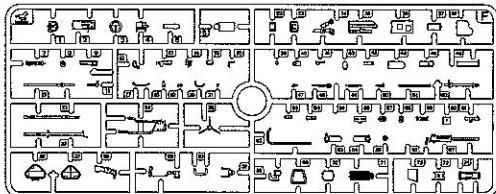
ⒸDb × 1



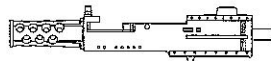
× 1



ⒸF × 1



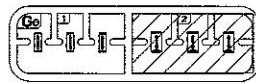
ⒸW × 1



Plastic Spring

塑胶弹簧

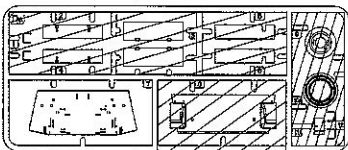
ⒸGe × 2



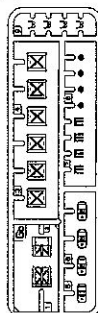
× 1

ⒸP × 1

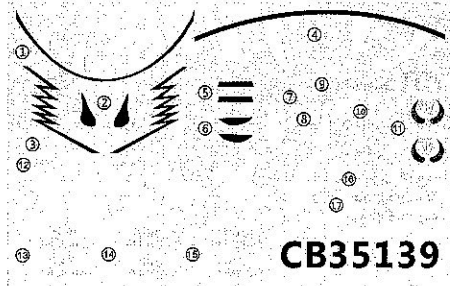
ⒸDa × 1



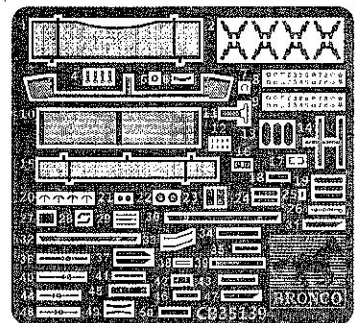
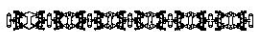
ⒸGb × 2



DECAL × 1



ⒸN × 14

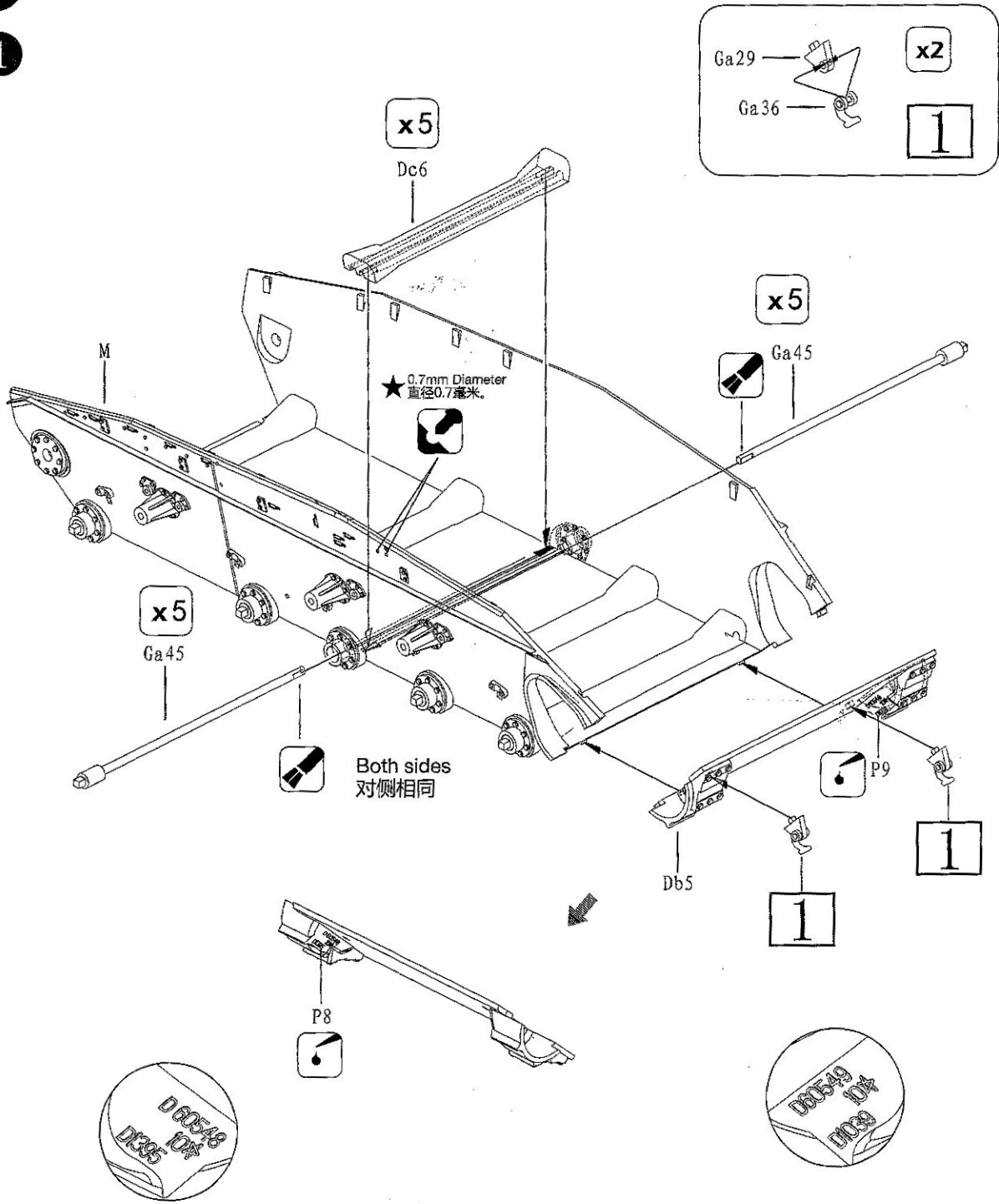


CB35139

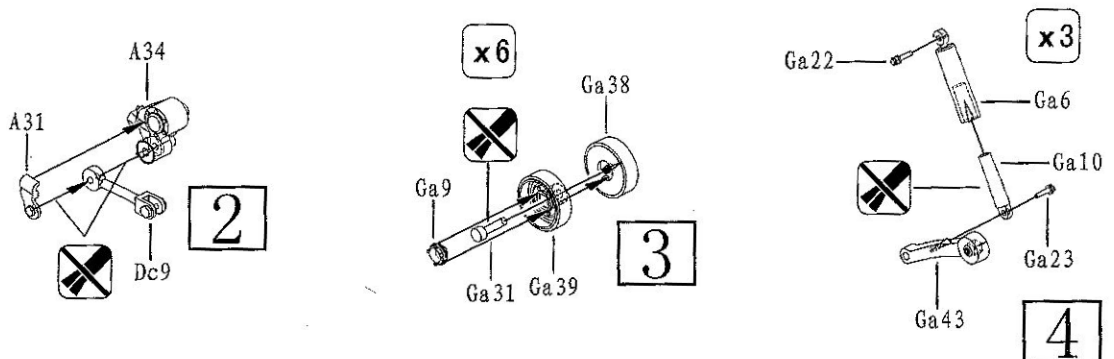
CB35139

# ILLUSTRATION 图示说明:

1



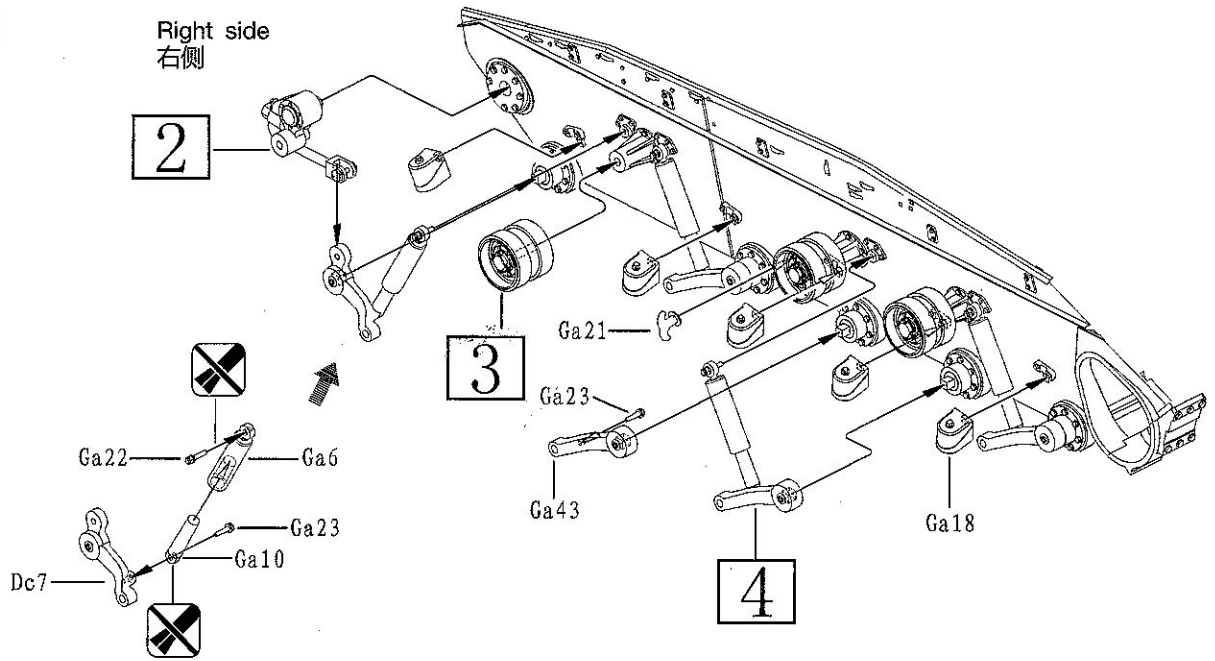
2



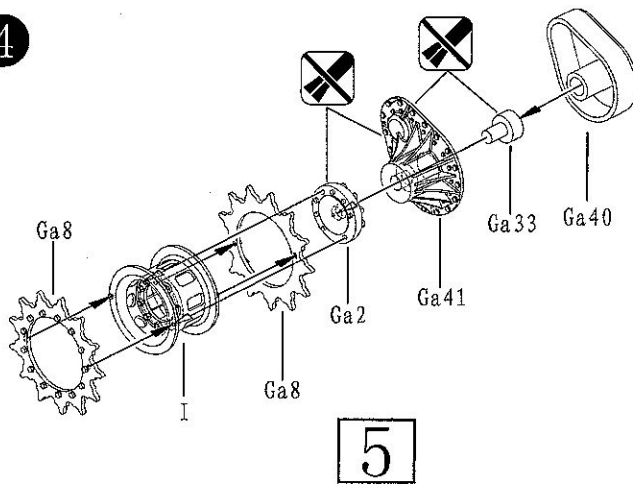


3

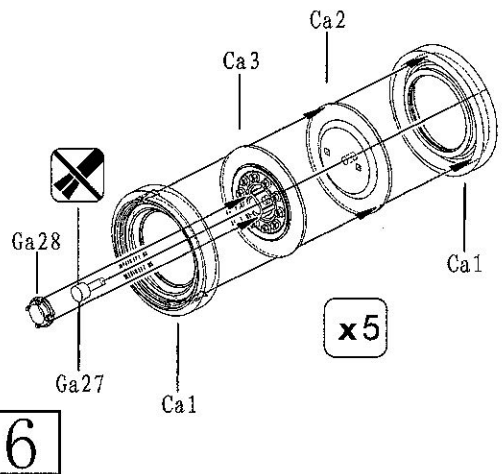
Right side  
右侧



4



6



5

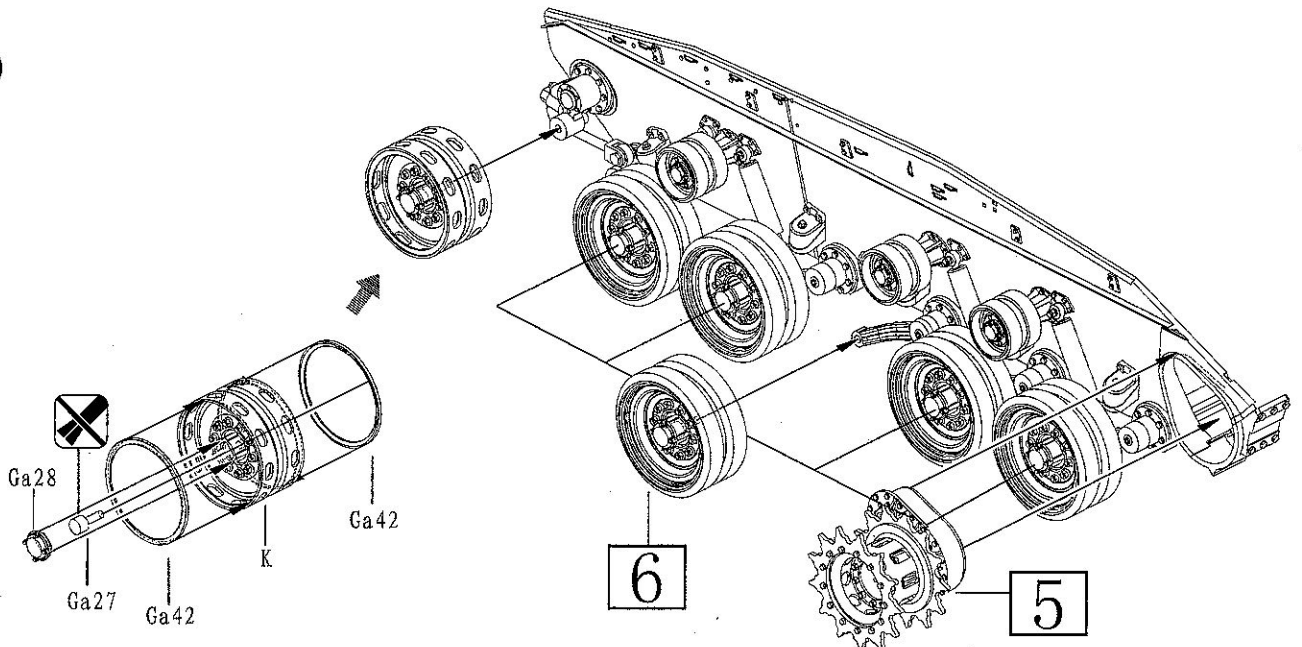
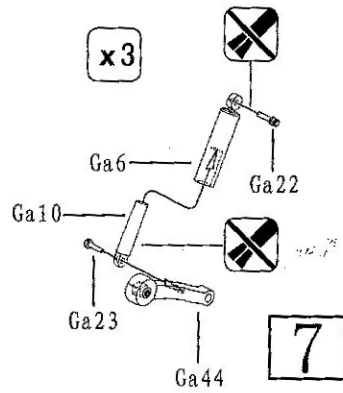
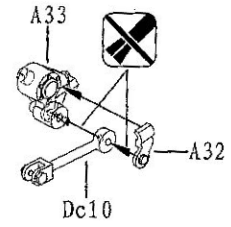


ILLUSTRATION 图示说明:

6

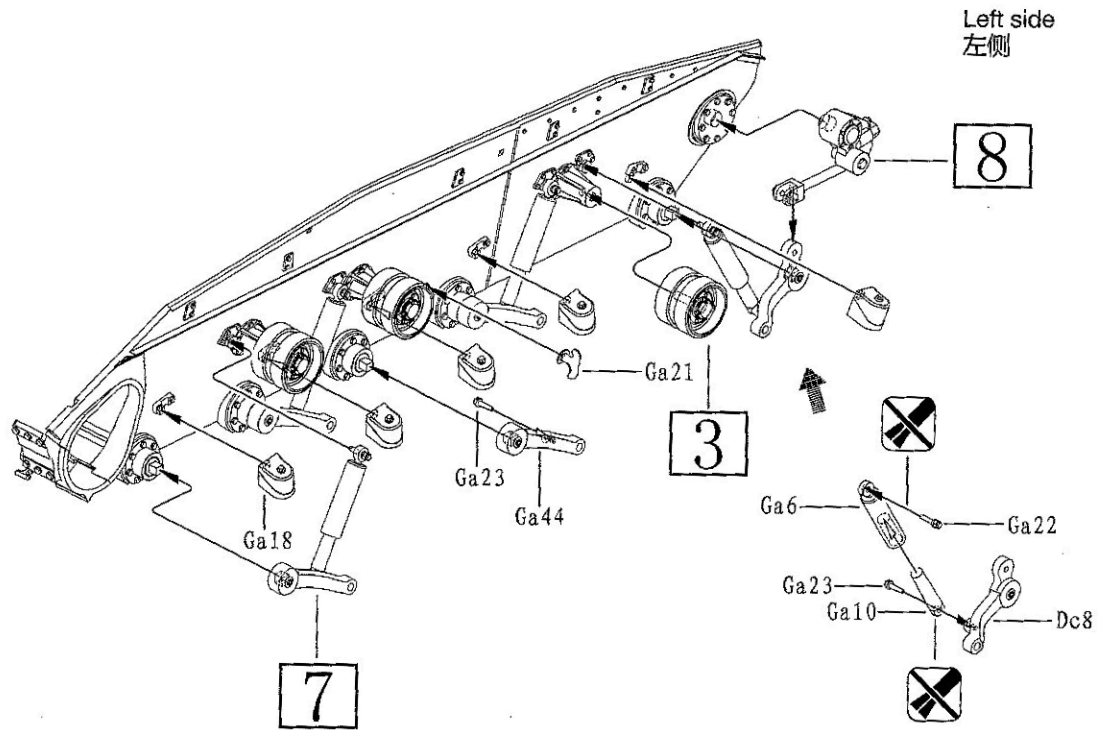


7

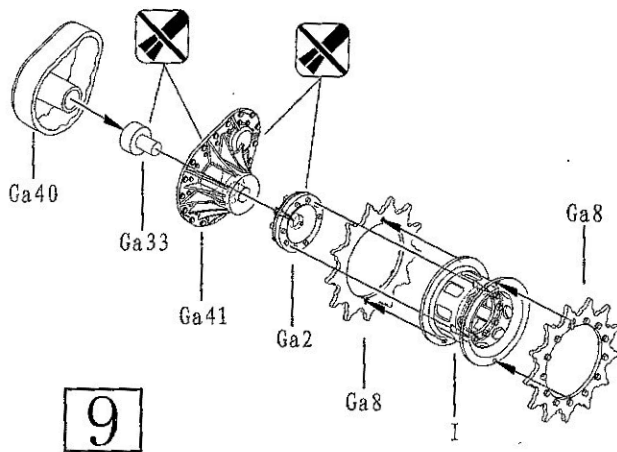


8

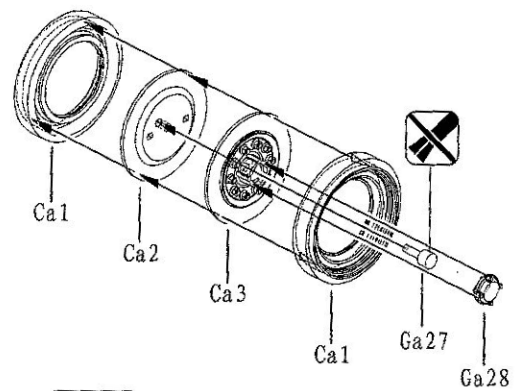
7



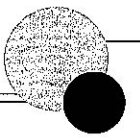
8



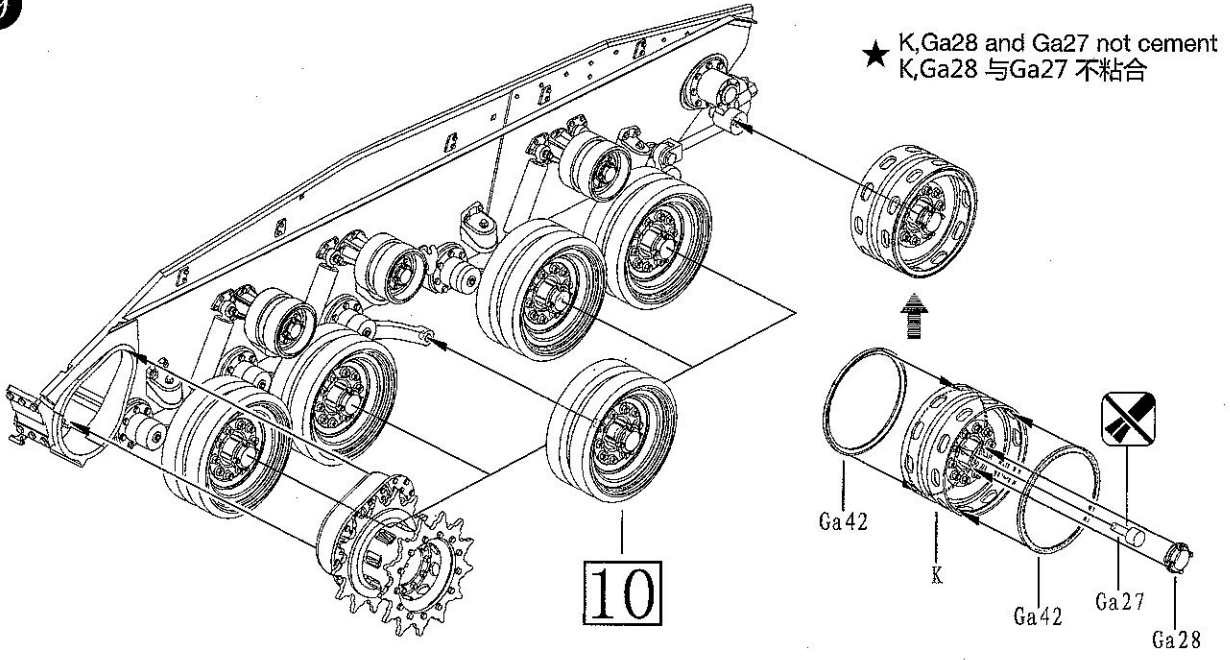
9



10

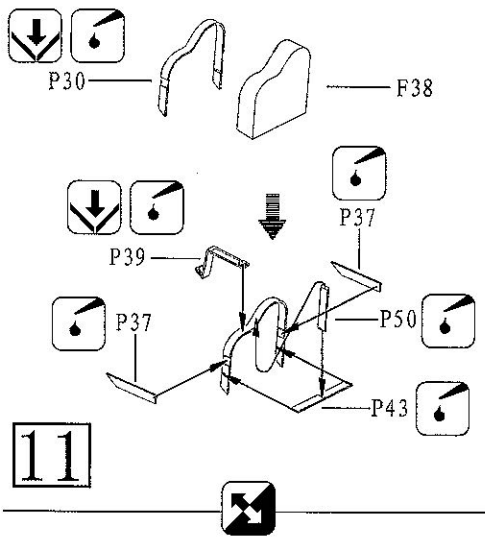


9

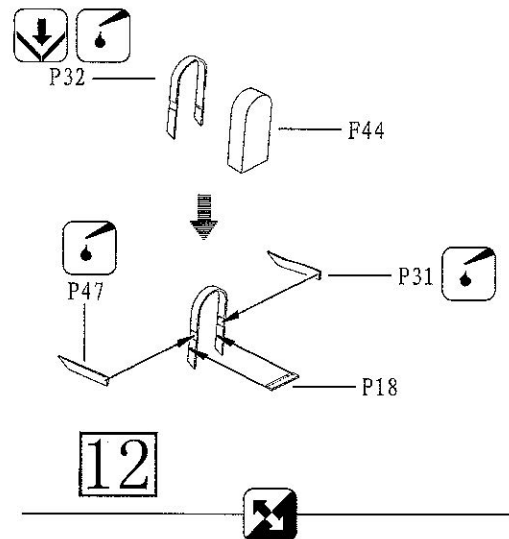


10

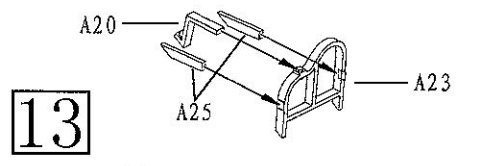
10



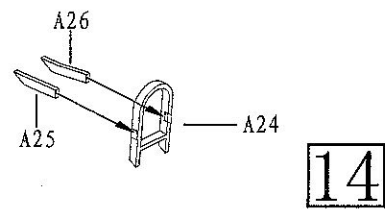
11



12

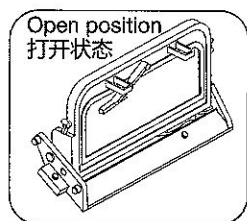
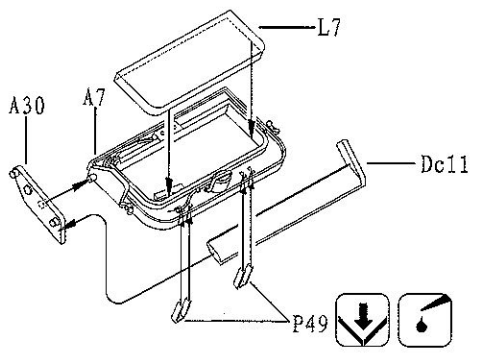


13



14

11



15

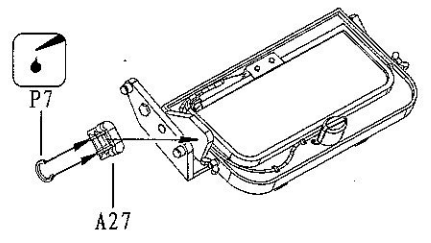
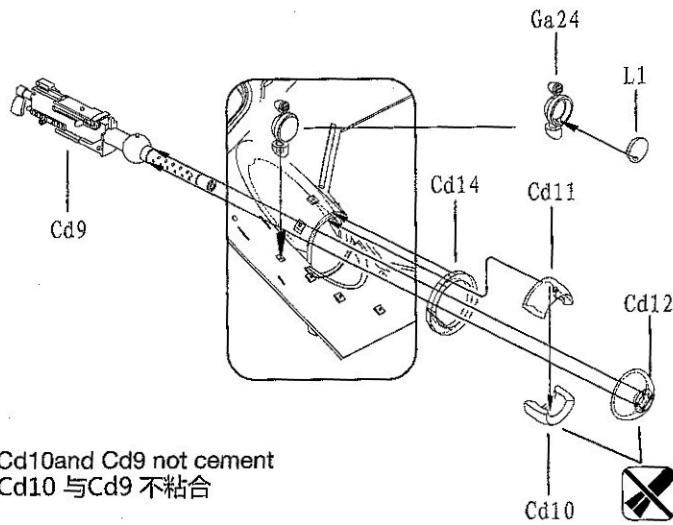
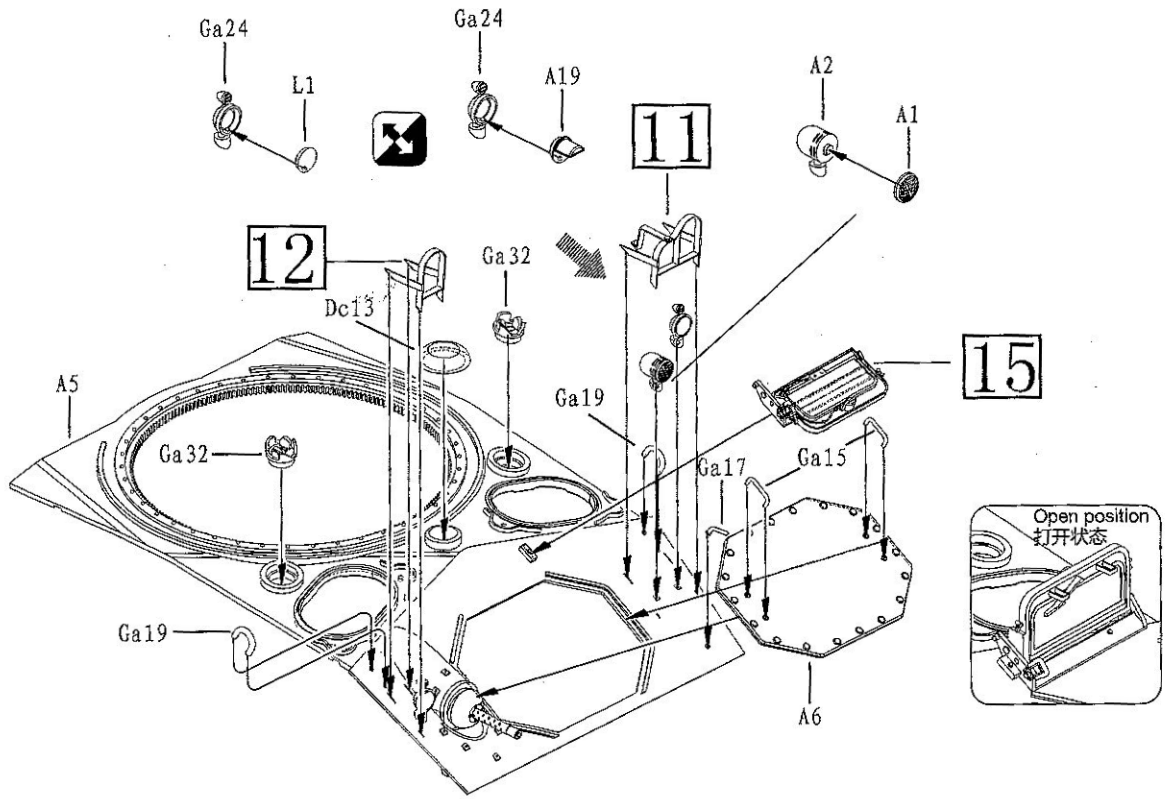


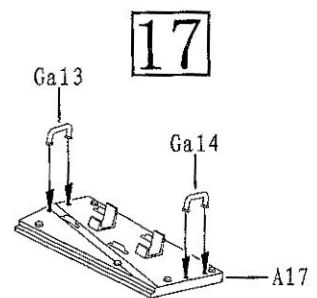
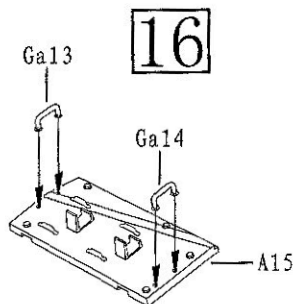
ILLUSTRATION 图示说明:

12



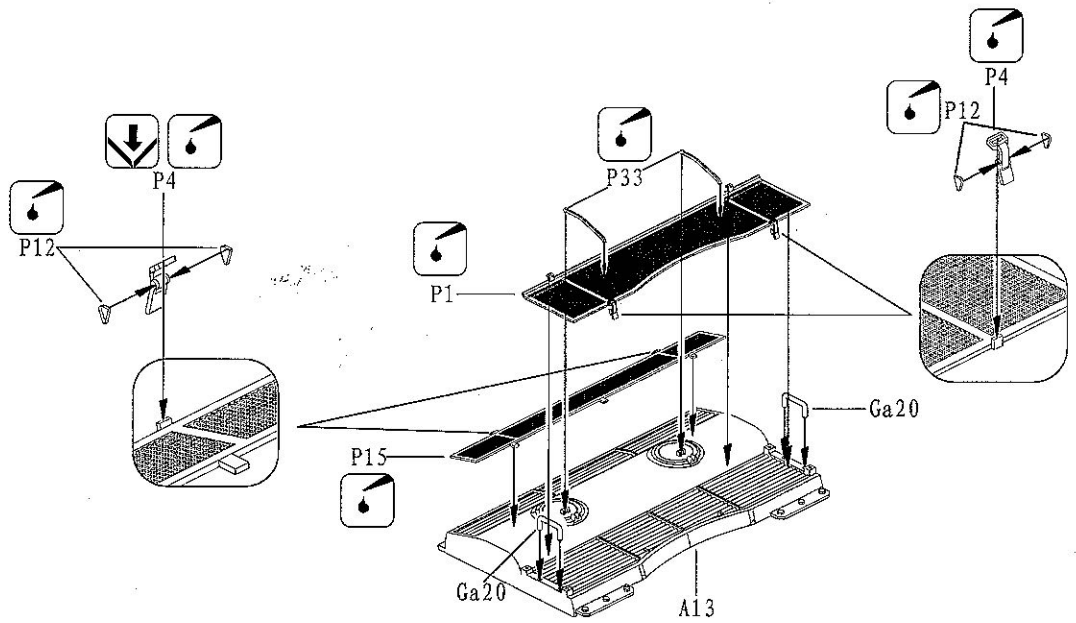
★ Cd11, Cd10 and Cd9 not cement  
Cd11, Cd10 与 Cd9 不粘合

13

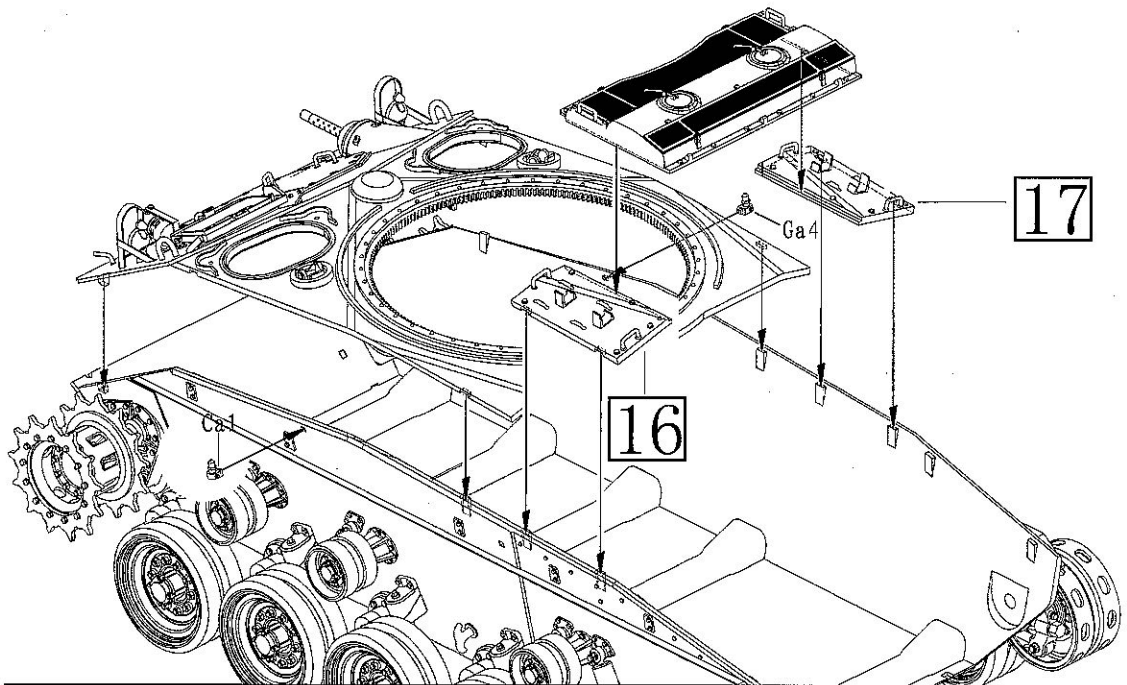




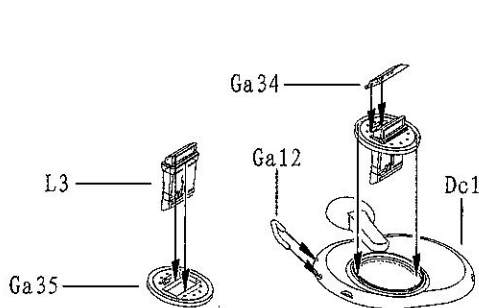
14



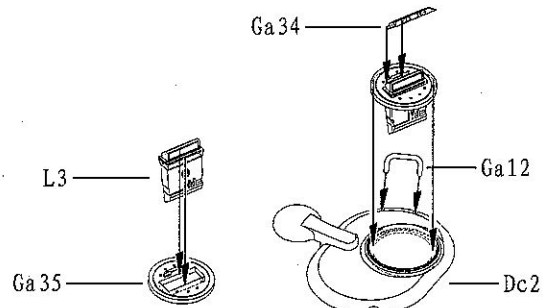
15



16



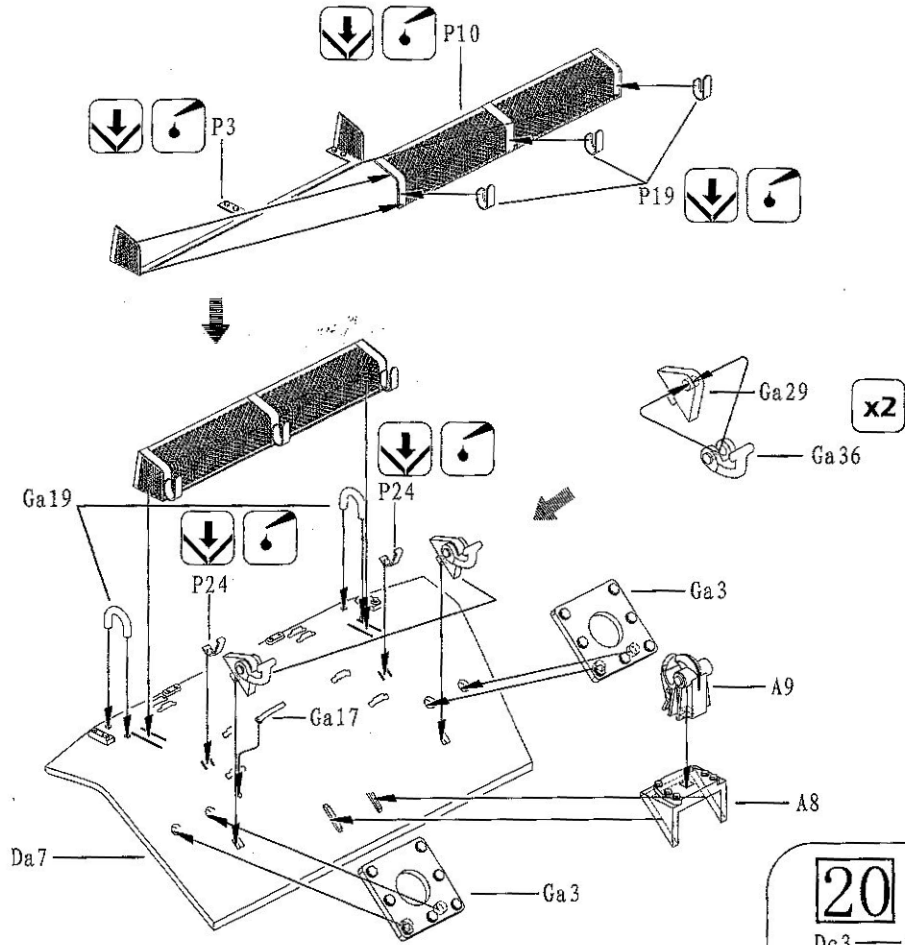
18



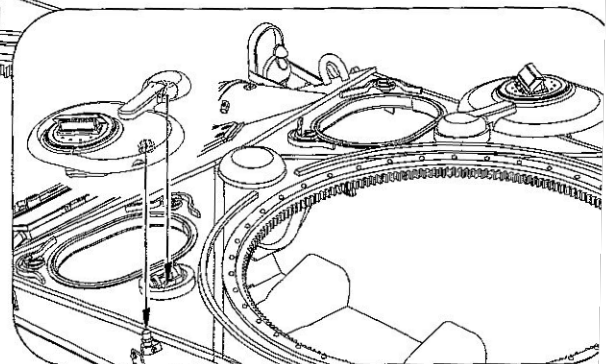
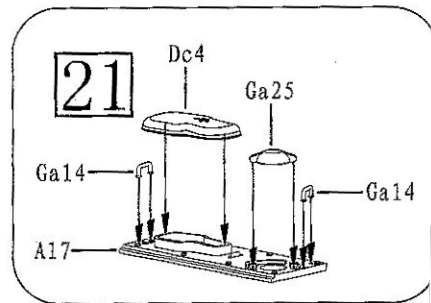
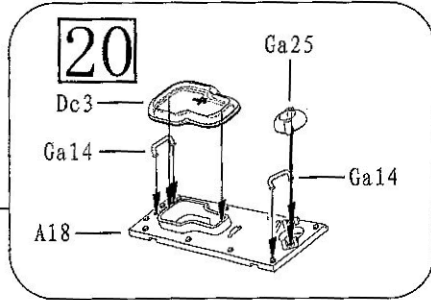
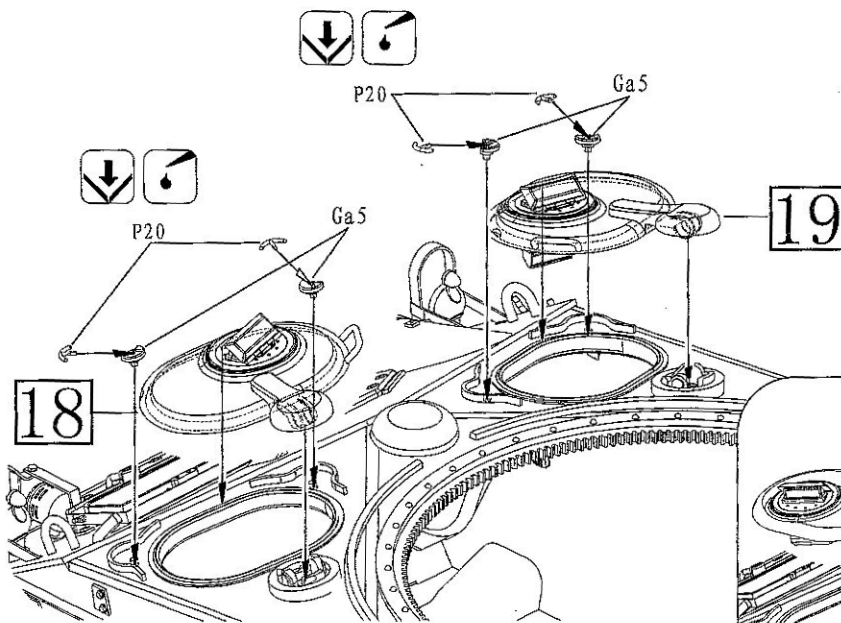
19

ILLUSTRATION 图示说明:

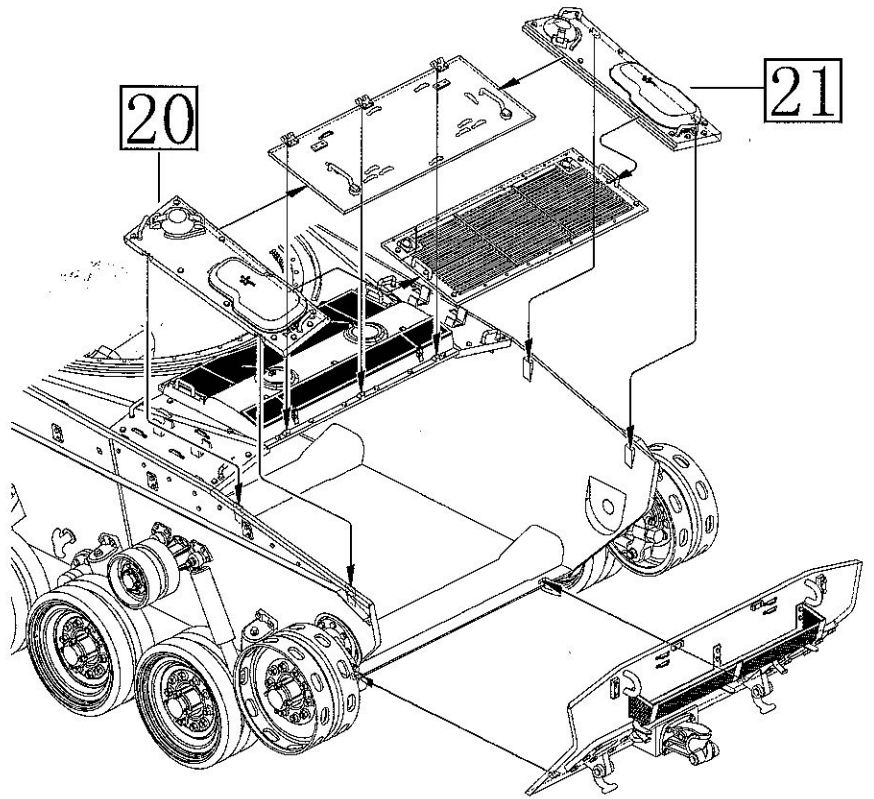
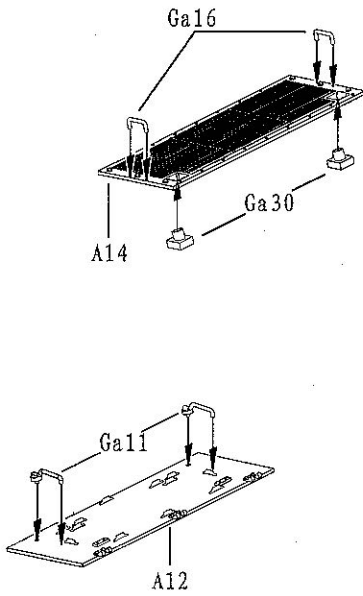
17



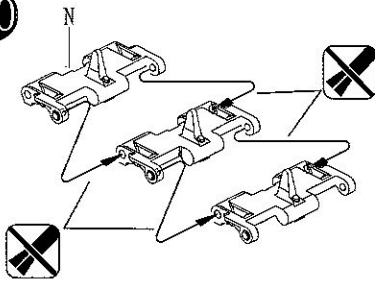
18



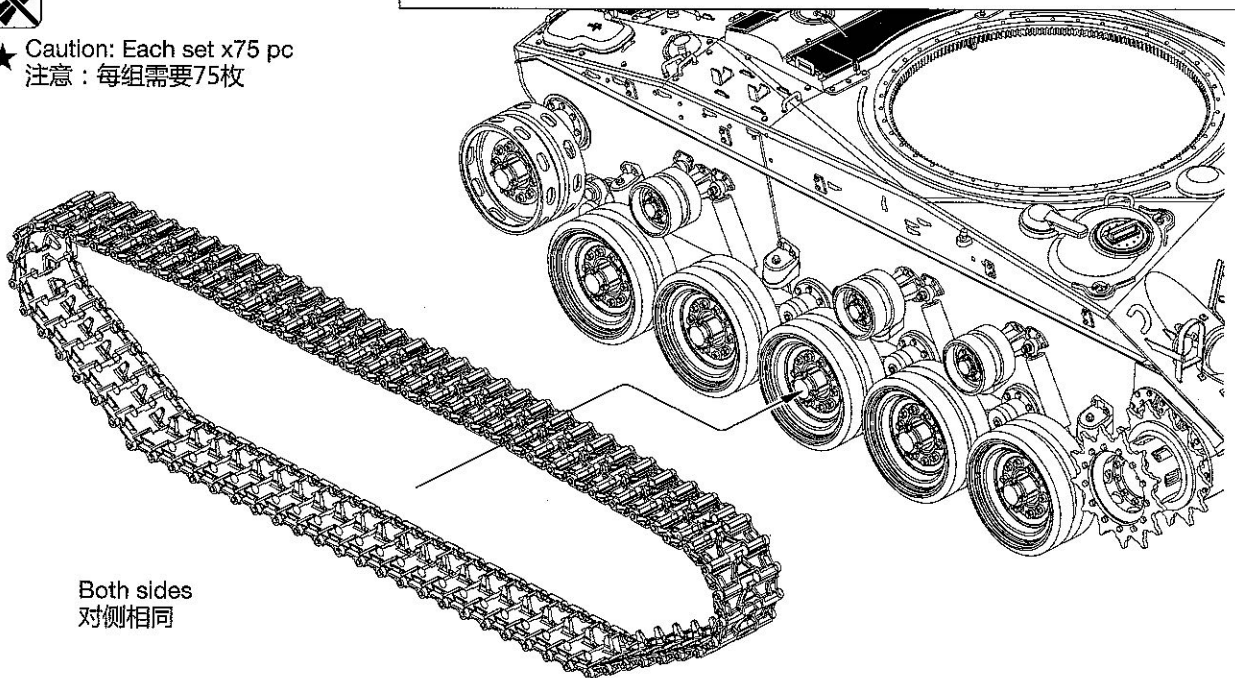
19



20



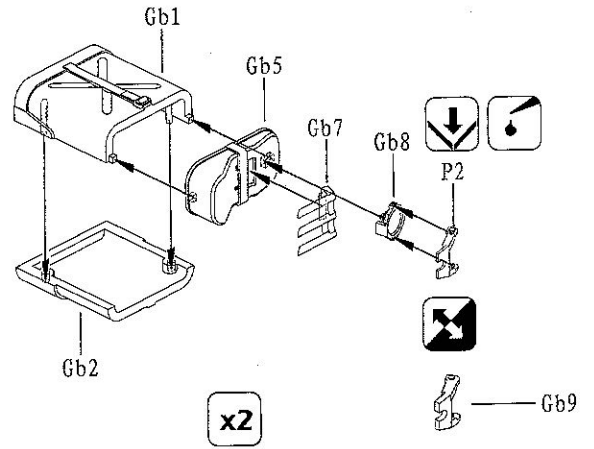
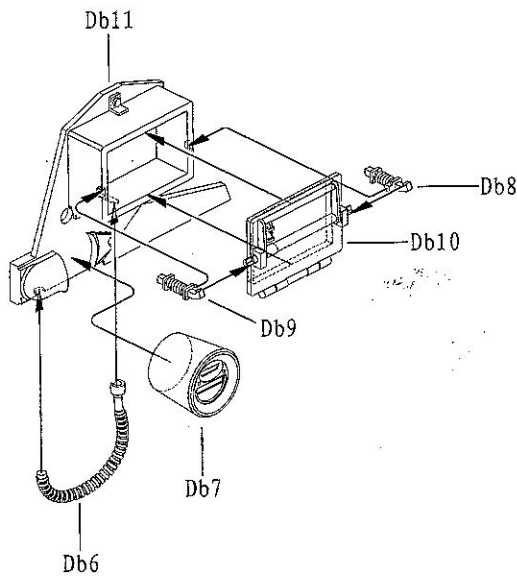
★ Caution: Each set x75 pc  
注意：每组需要75枚



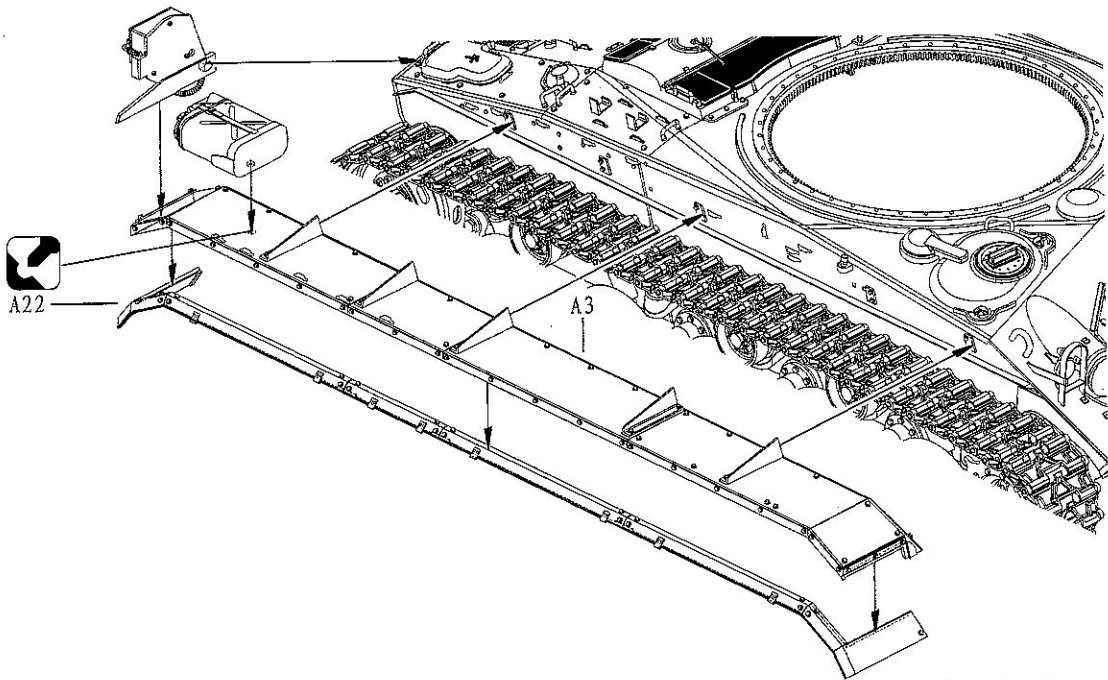
Both sides  
对侧相同

# ILLUSTRATION 图示说明:

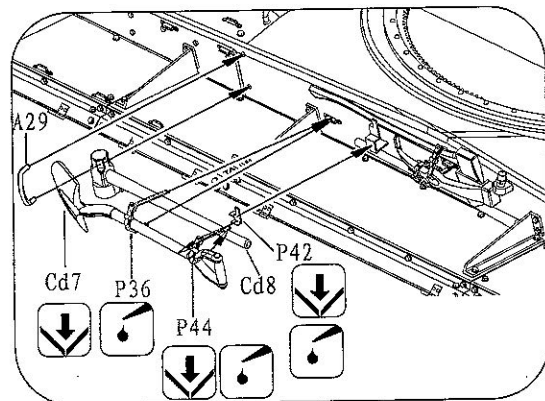
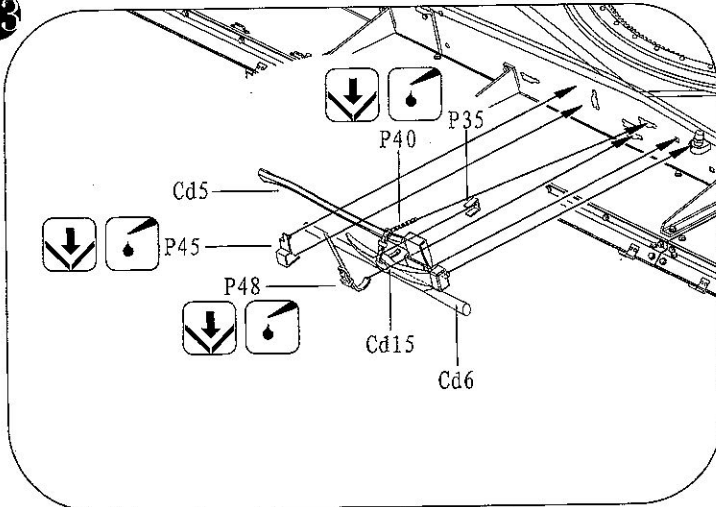
21



22

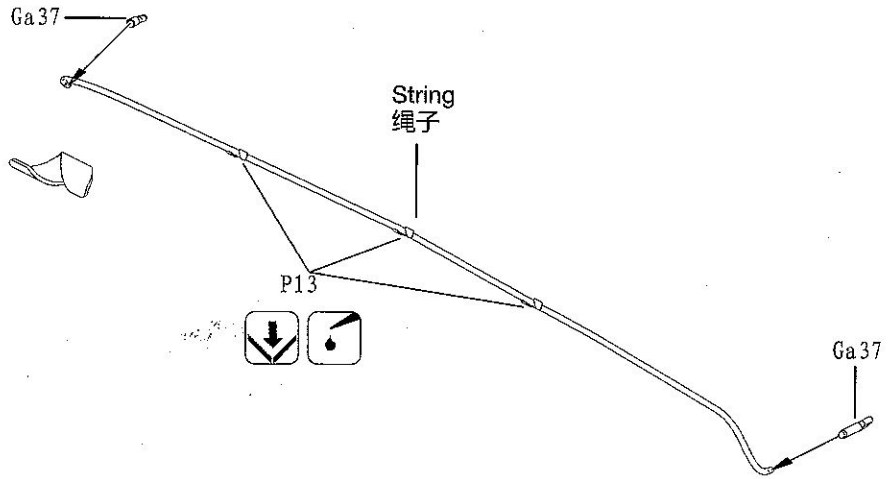


23

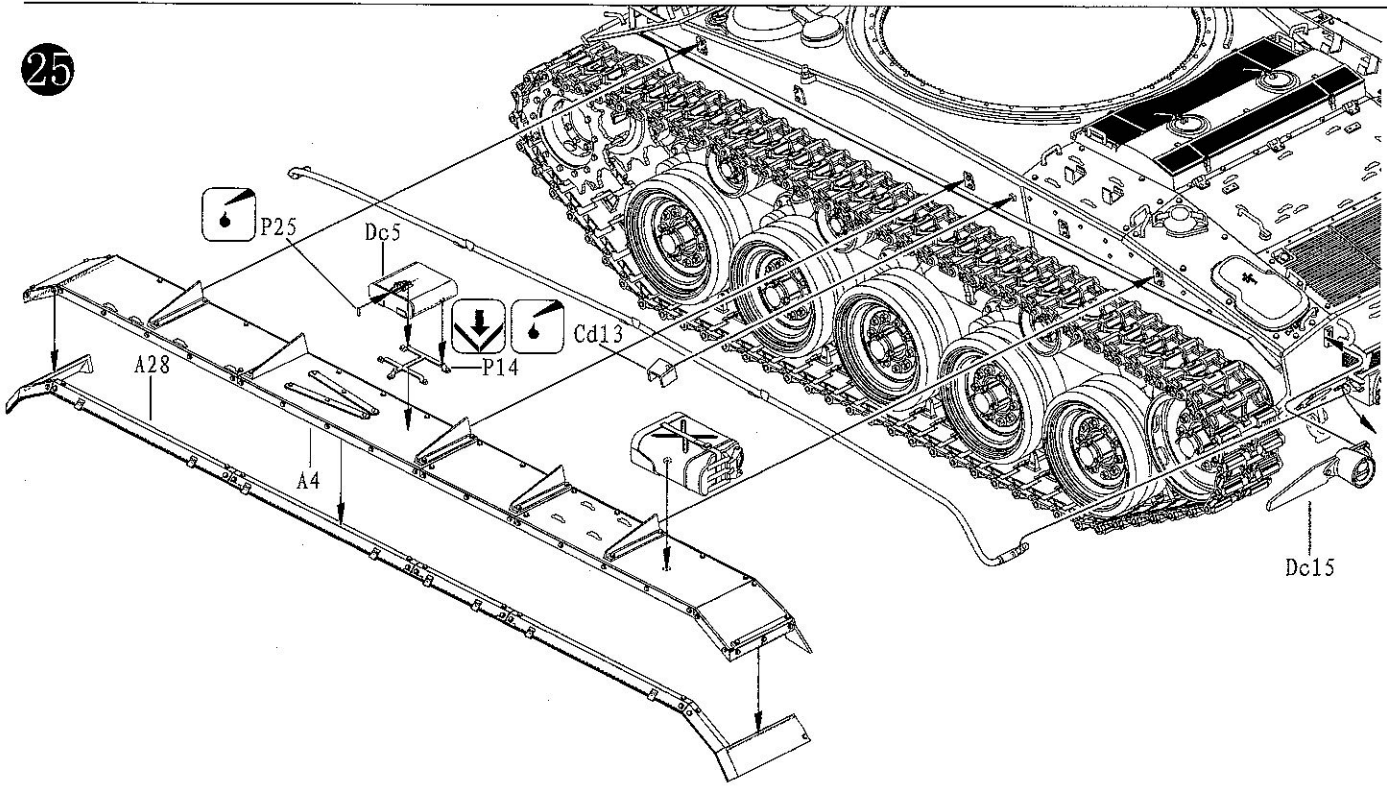




24

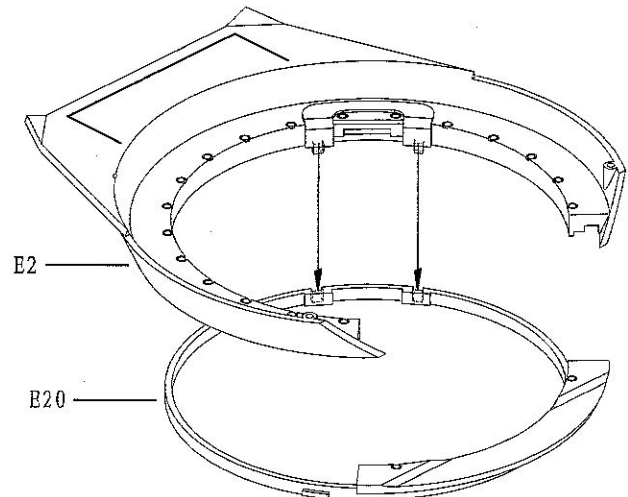
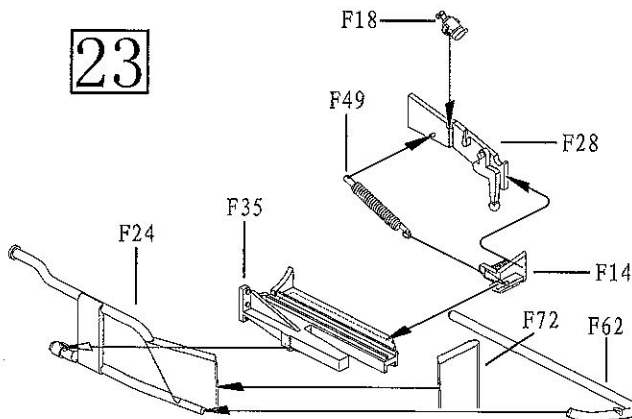


25

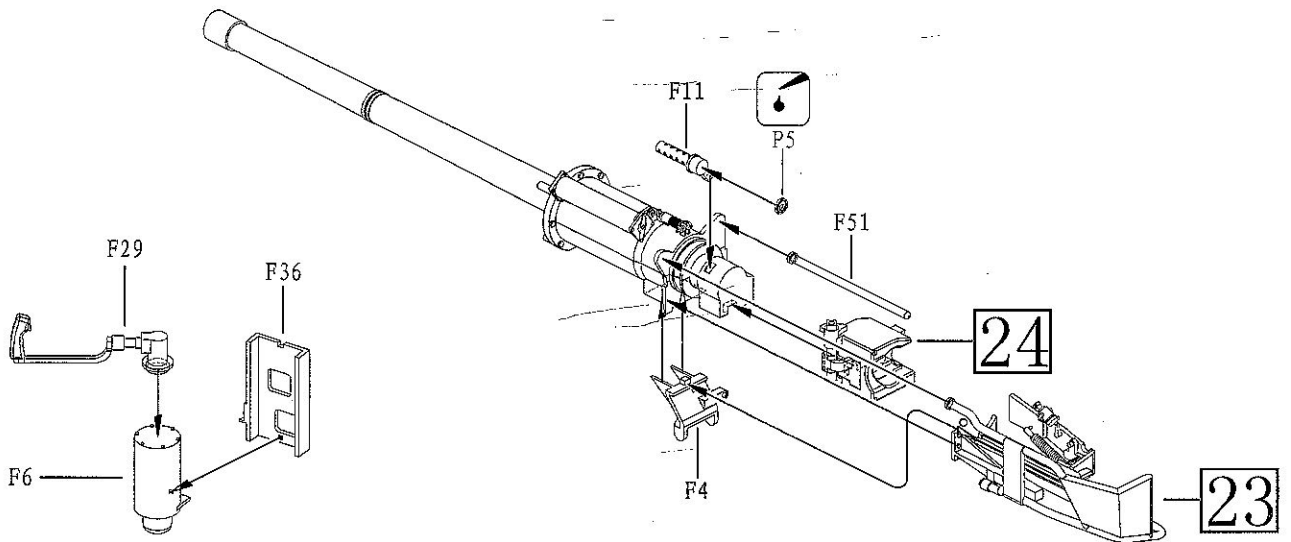
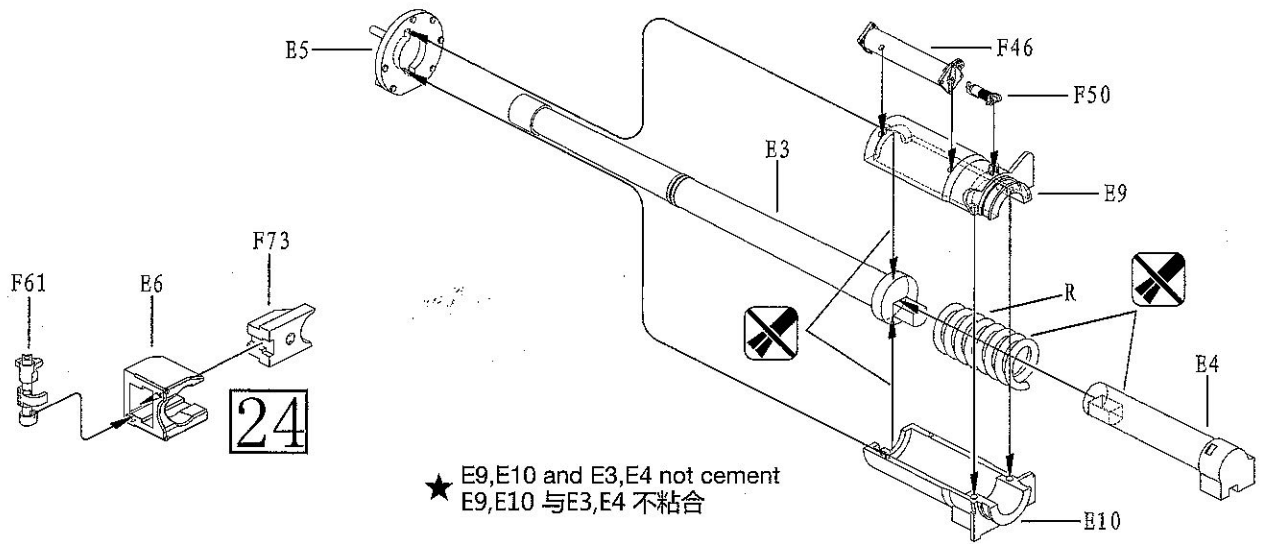


26

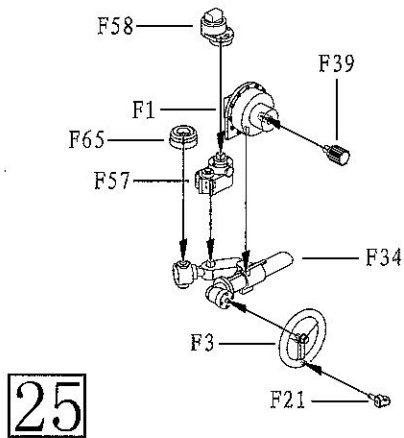
23



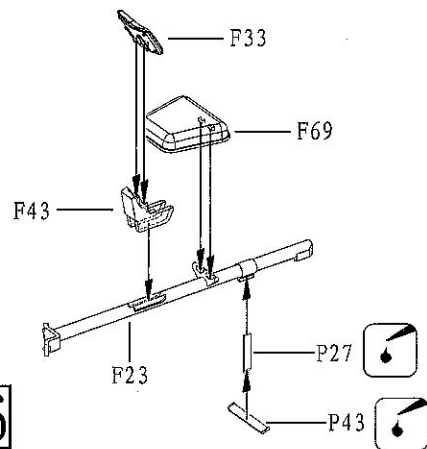
27



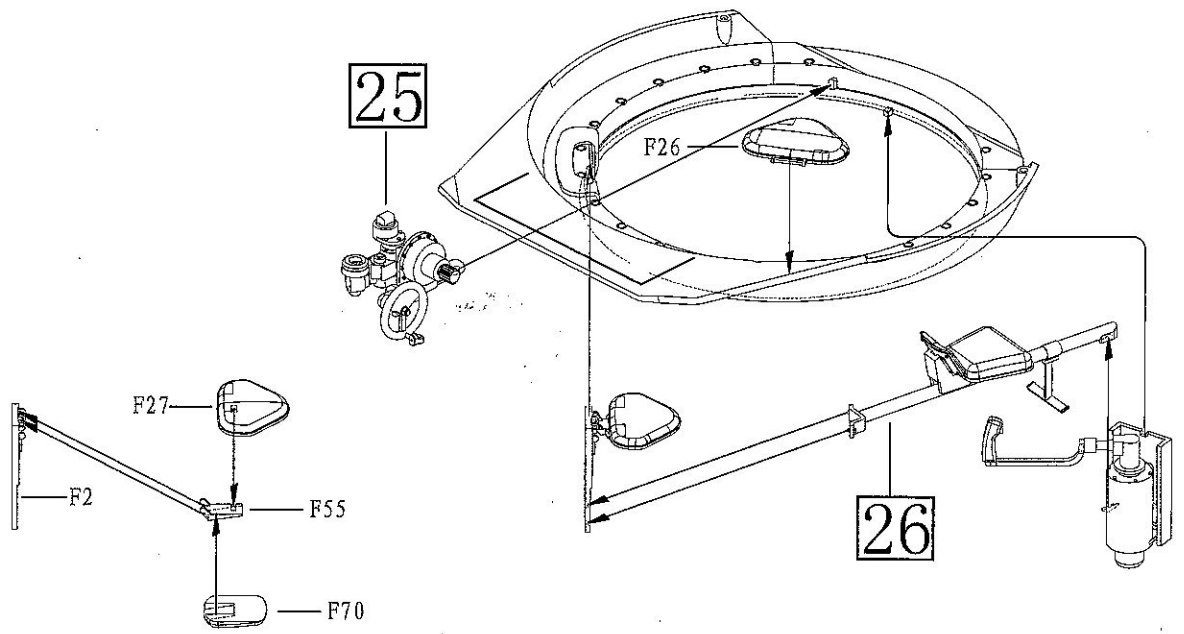
28



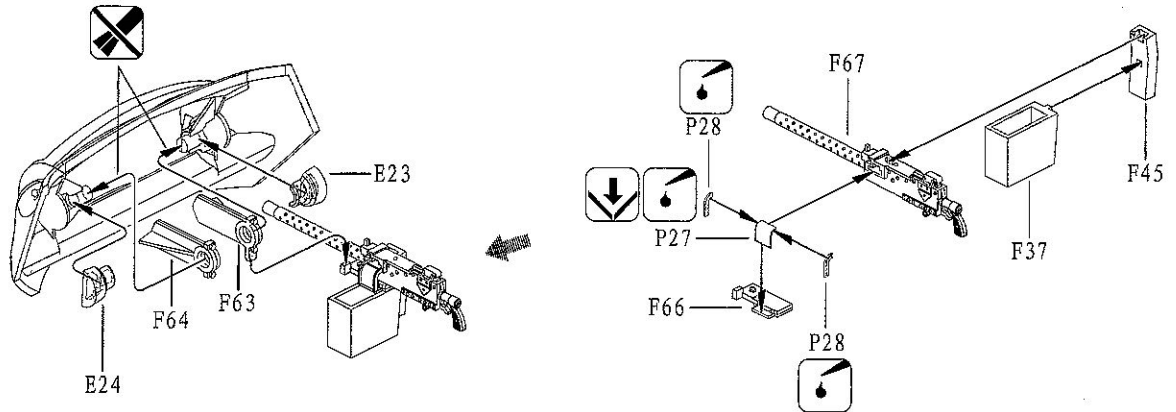
26



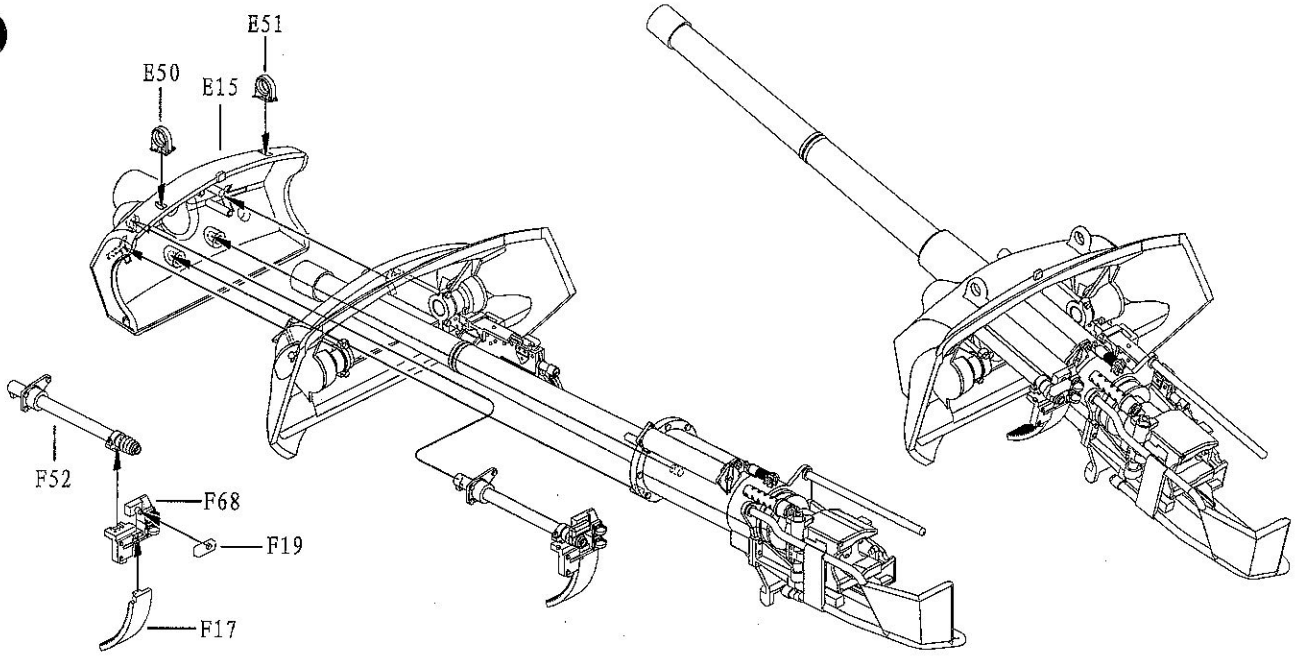
29



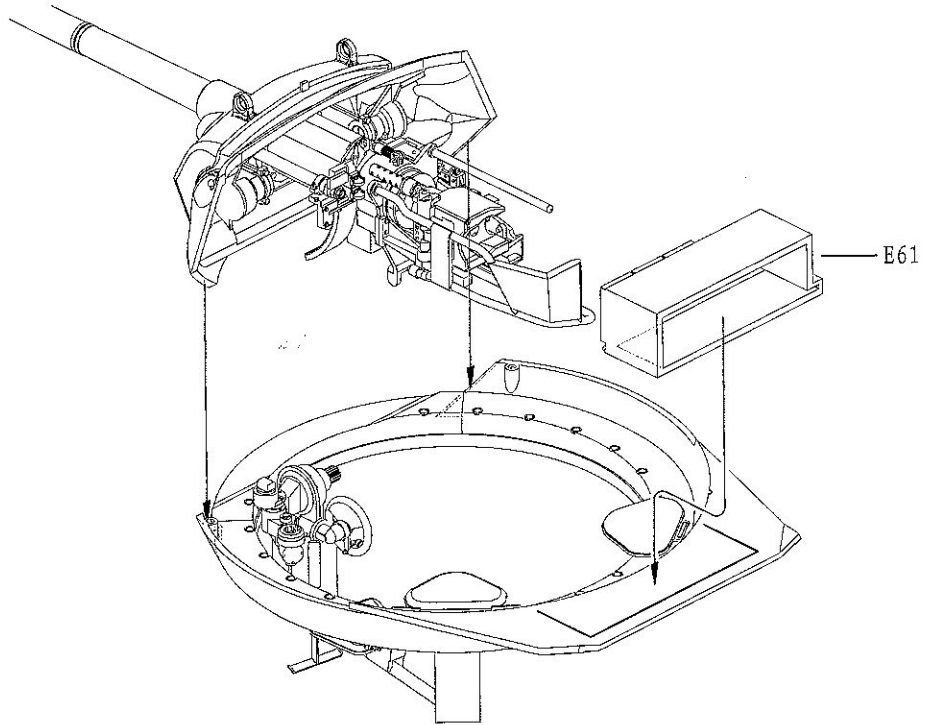
30



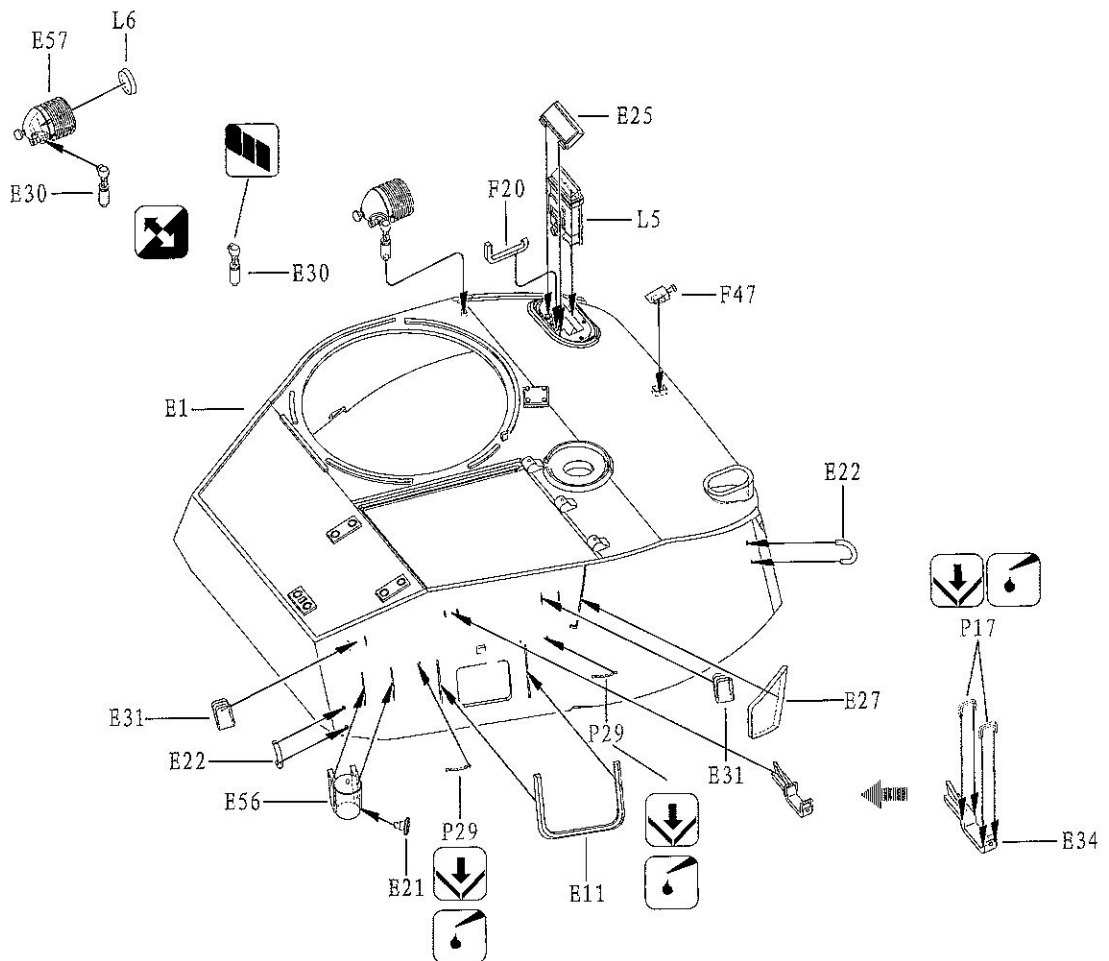
31



32

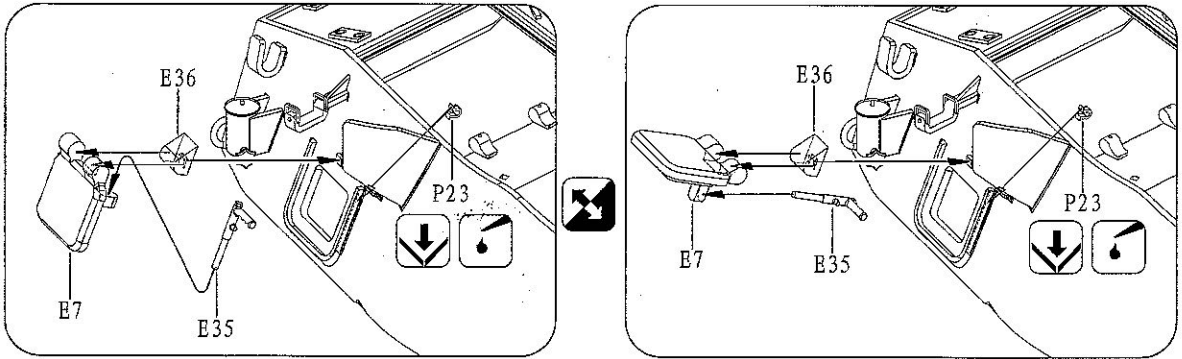


33

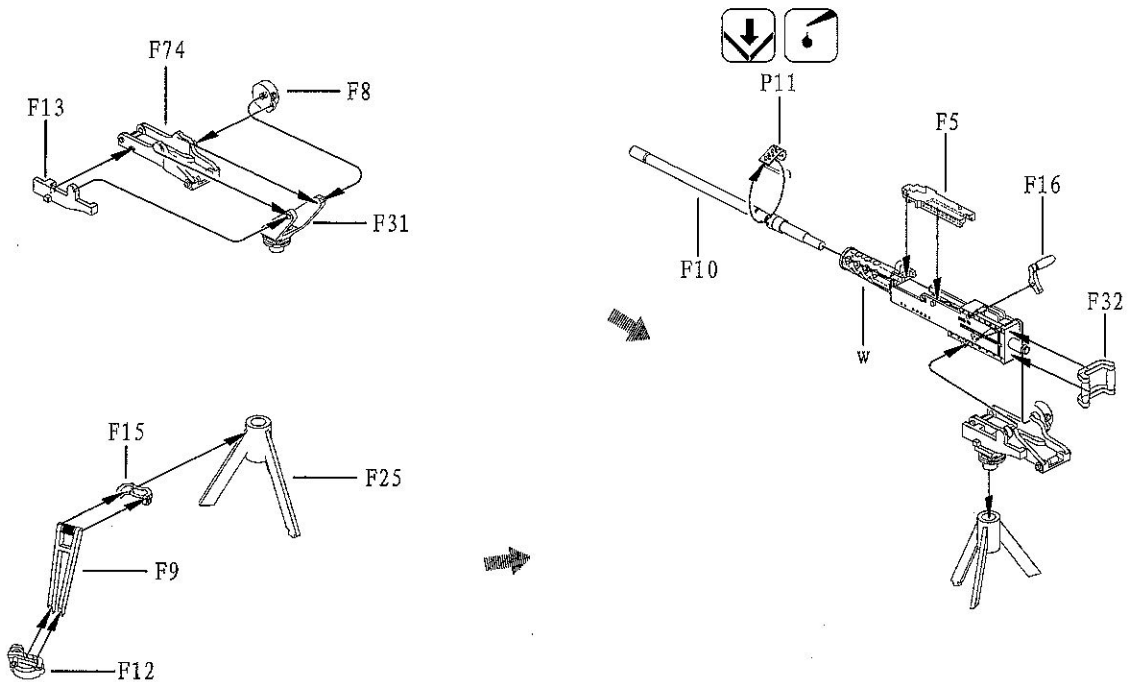




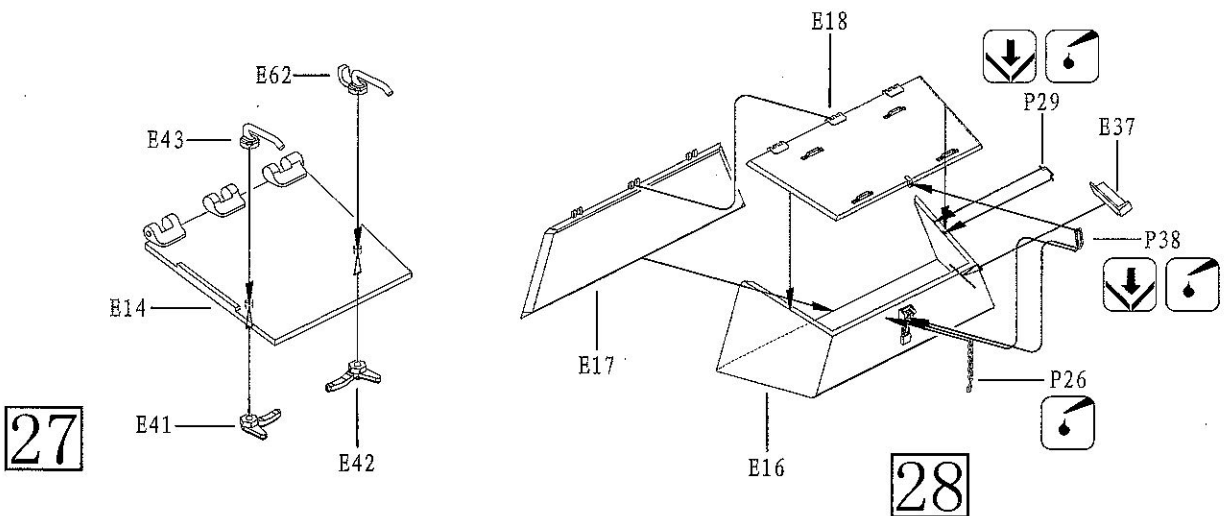
34



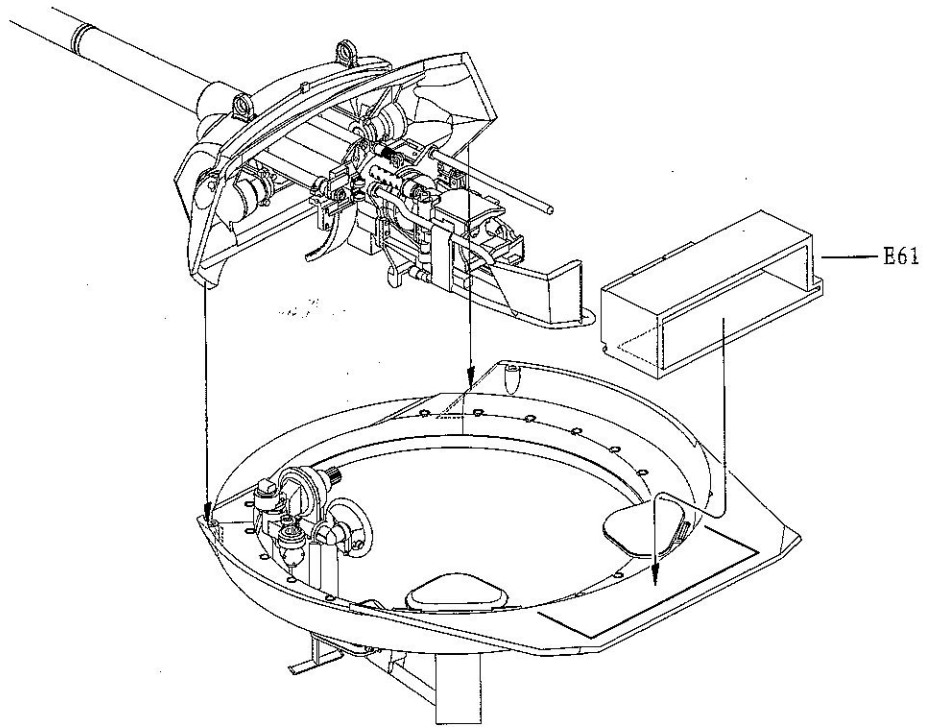
35



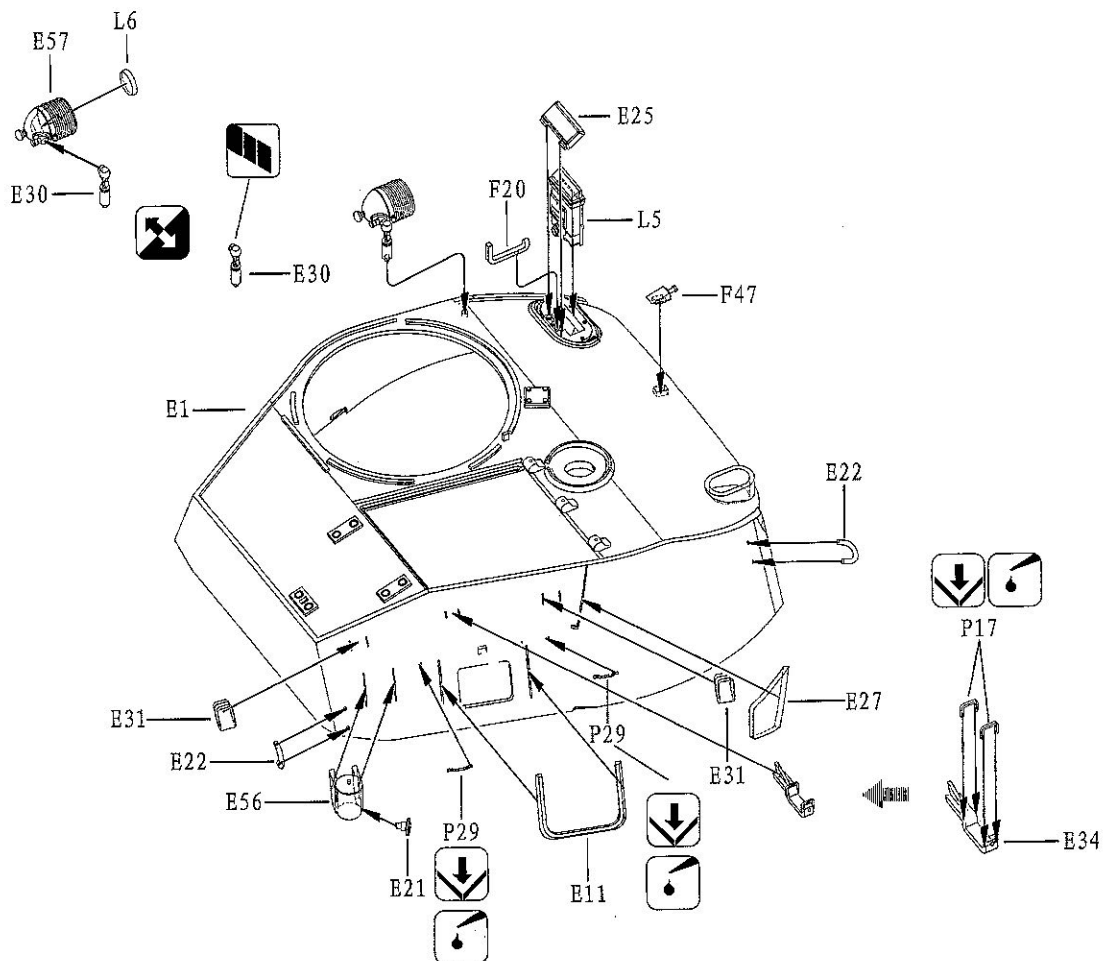
36



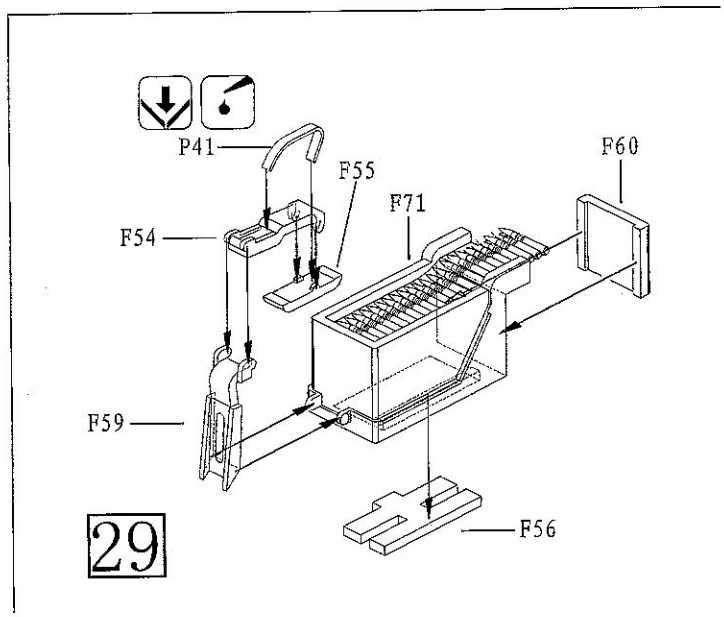
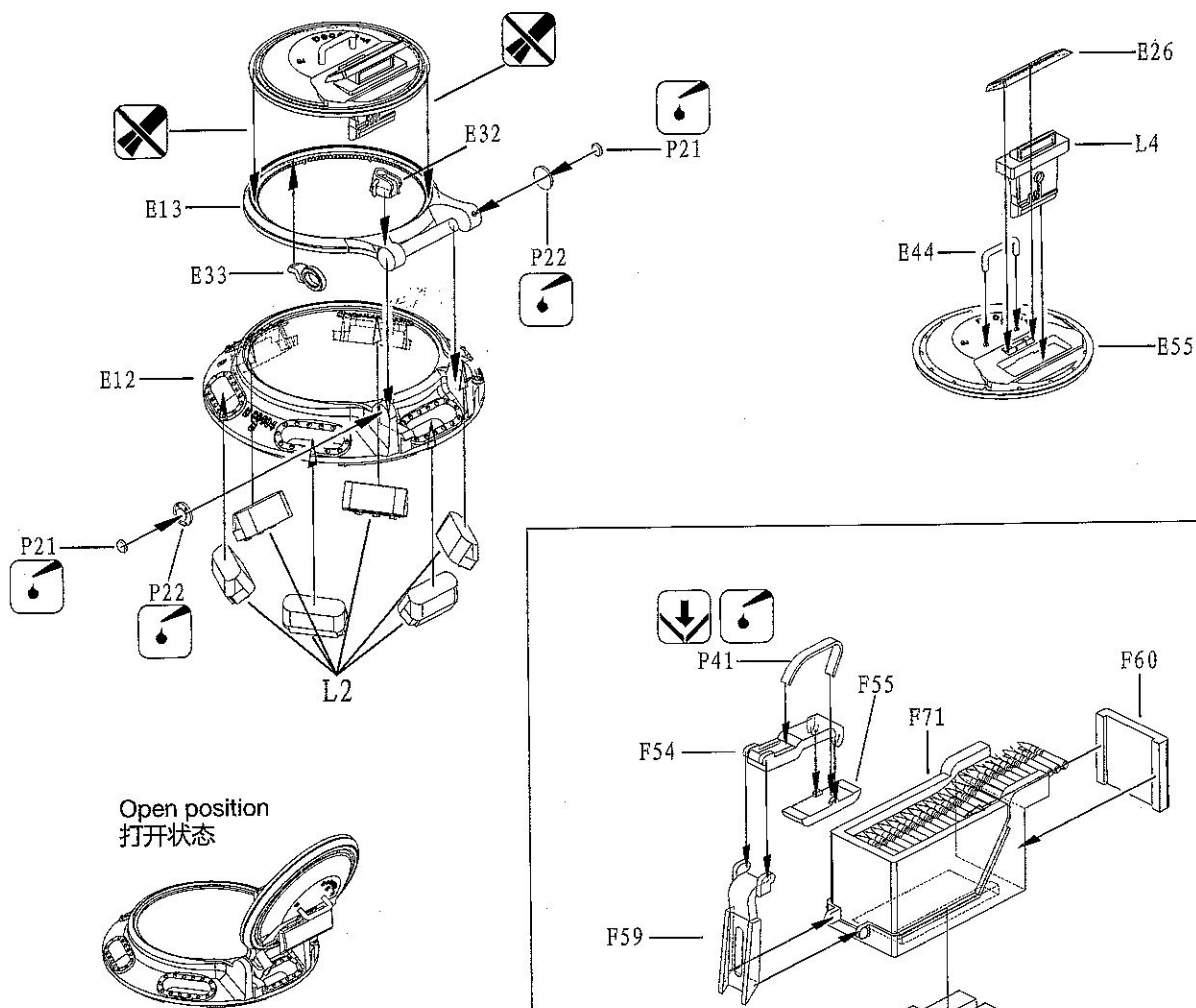
32



33

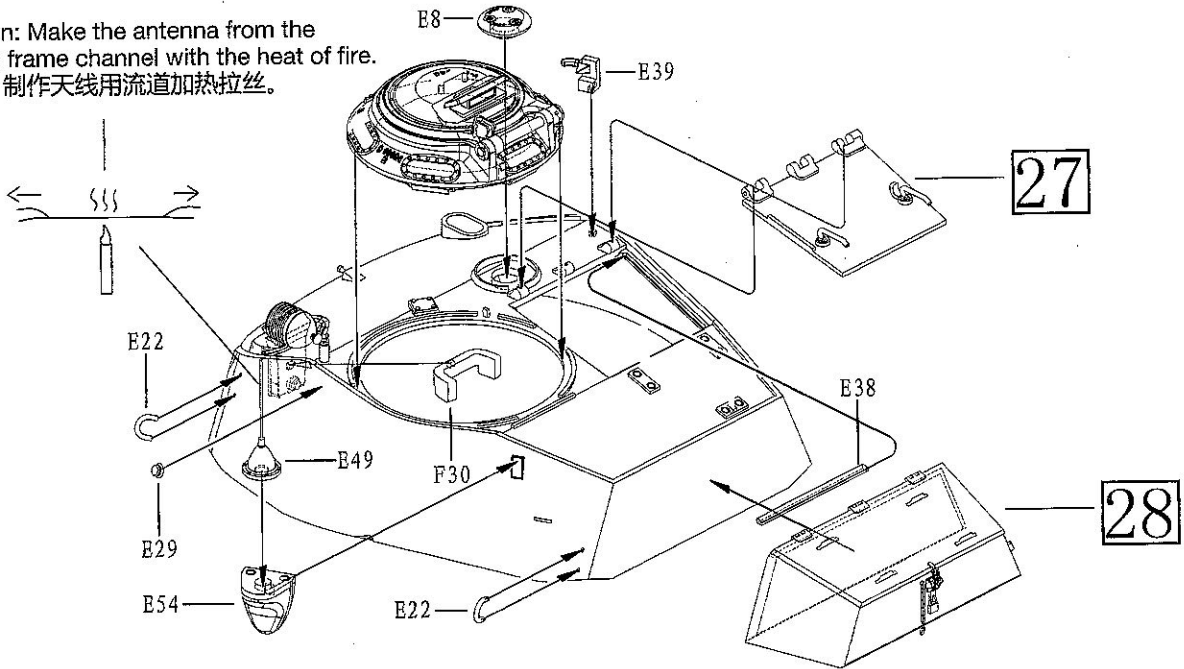


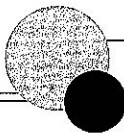
37



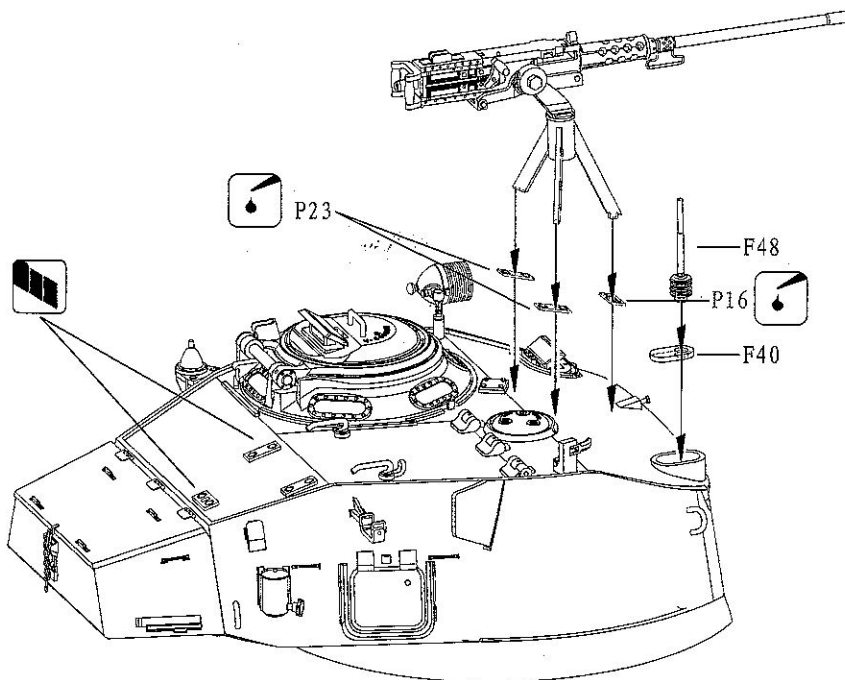
38

Caution: Make the antenna from the plastic frame channel with the heat of fire.  
注意：制作天线用流道加热拉丝。

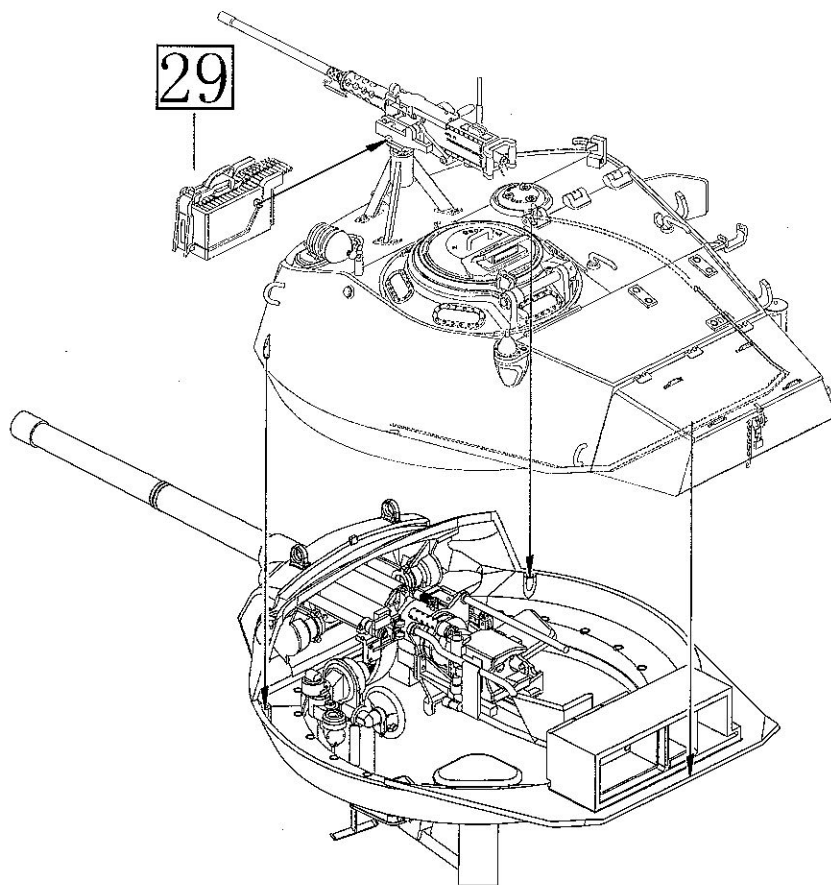




39



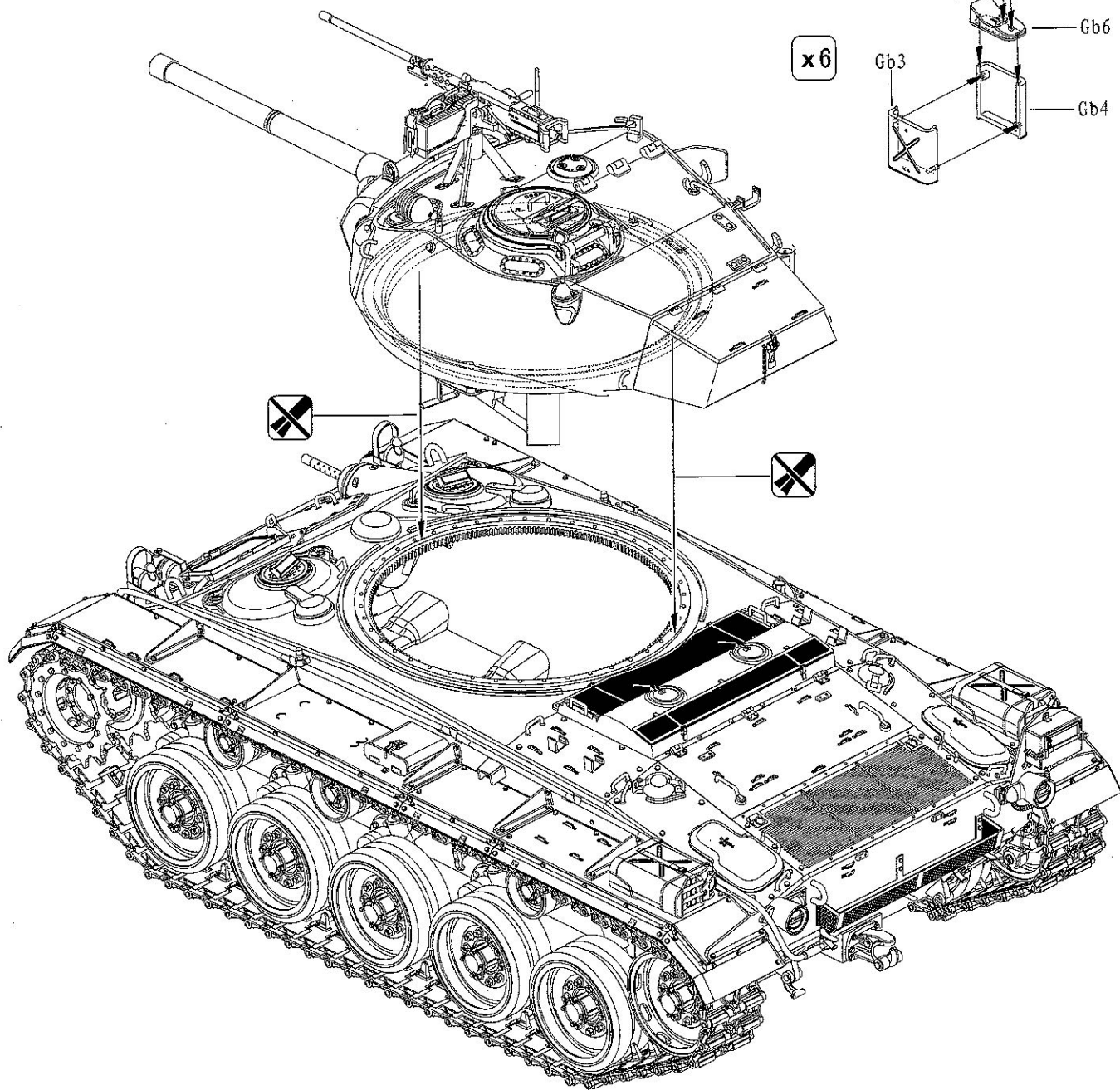
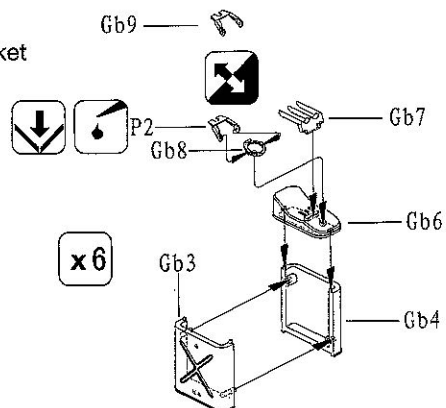
40





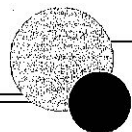
41

★ Bonus: Oil bucket  
附送: 油桶



★ This is a precision molded plastic kit with exceptionally fine detail. It will require a little more care during assembly, but you feel the end result is well worth the effort.  
本套件设计精密,零件繁多可能让你在制作过程中有所不便,但完成后会让你产生无穷之成功快感。

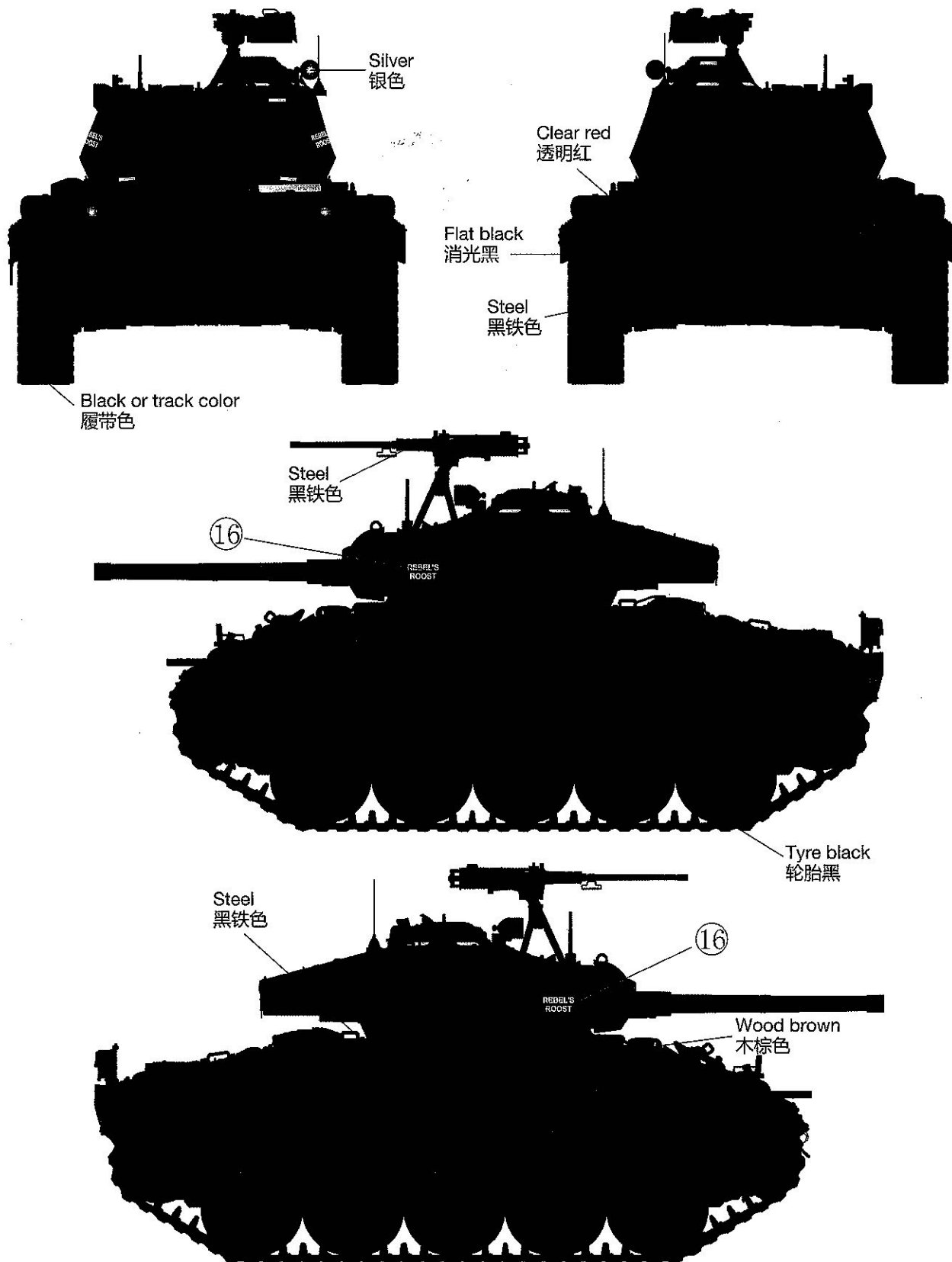
Happy modelling!  
祝愿制作愉快!



★ Option1:

The 24th Reconnaissance Company, US 24th Infantry Division, Chonui, South Korea, July, 1950.

1950年7月在南朝鲜半岛昌宁作战之美军第24步兵师第24侦察团之属下车辆。



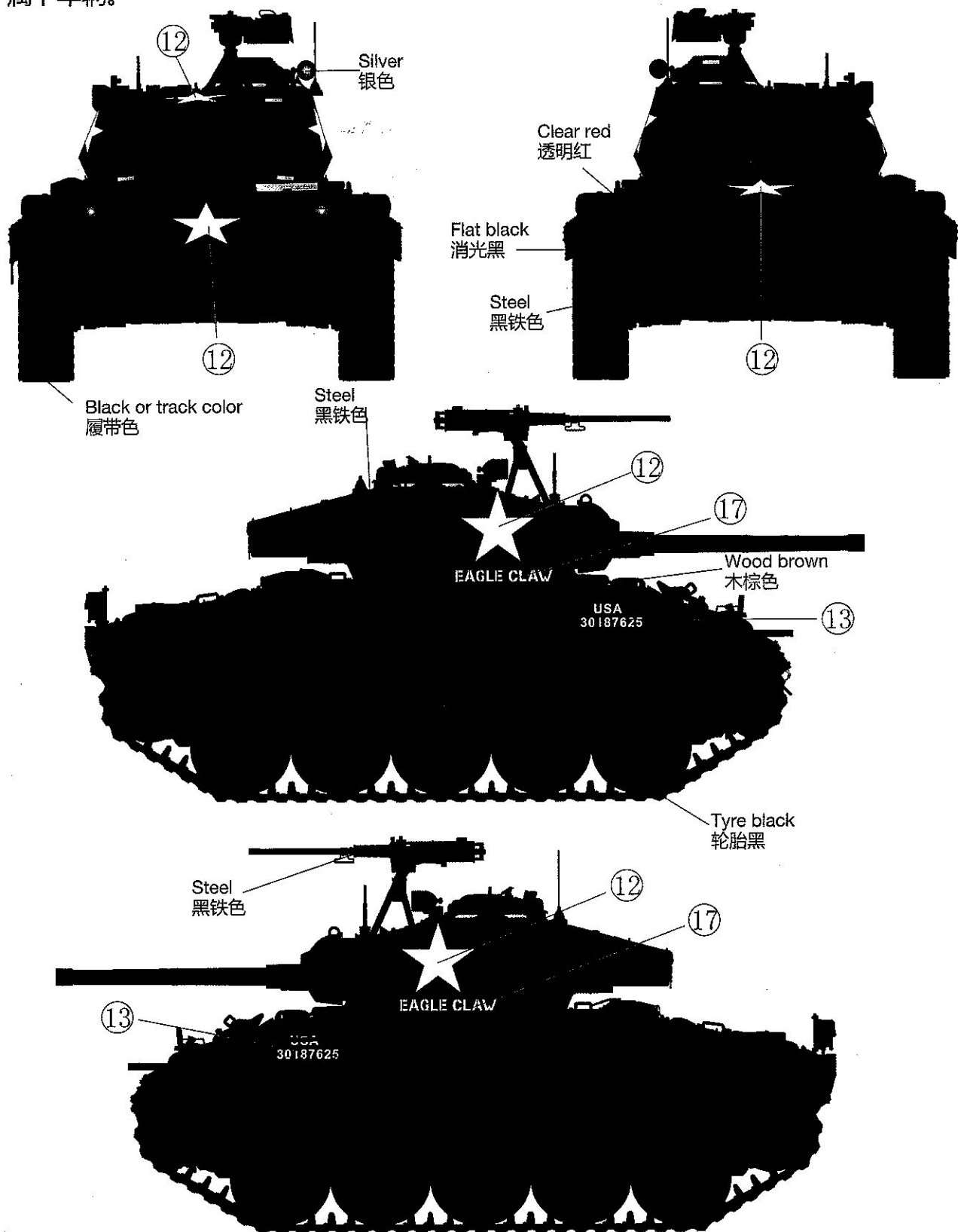
Camouflage Scheme: Overall Olive Drab  
全车涂橄榄绿色

# DECAL & COLOUR GUIDE 水贴及涂色指示:

★ Option2:

US 3rd Reconnaissance Company, 3rd Infantry Division, Songbongdong, Seoul, South Korea, May 1951.

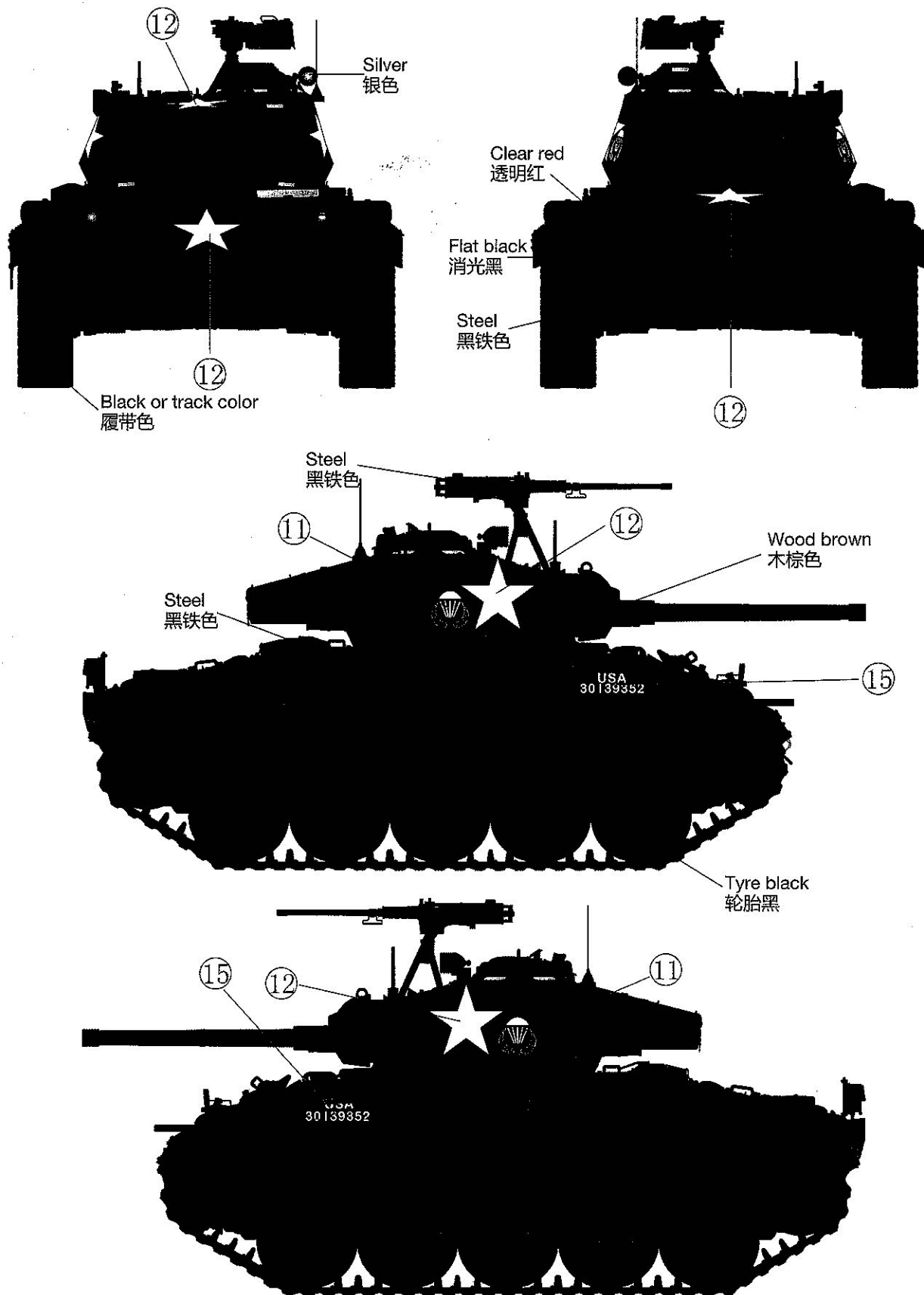
1951年5月在南朝鲜半岛首尔市(汉城)松坡洞地区作战之美军第3步兵师,第3侦察之属下车辆。



Camouflage Scheme: Overall Olive Drab  
全车涂橄榄绿色

★ Option3:

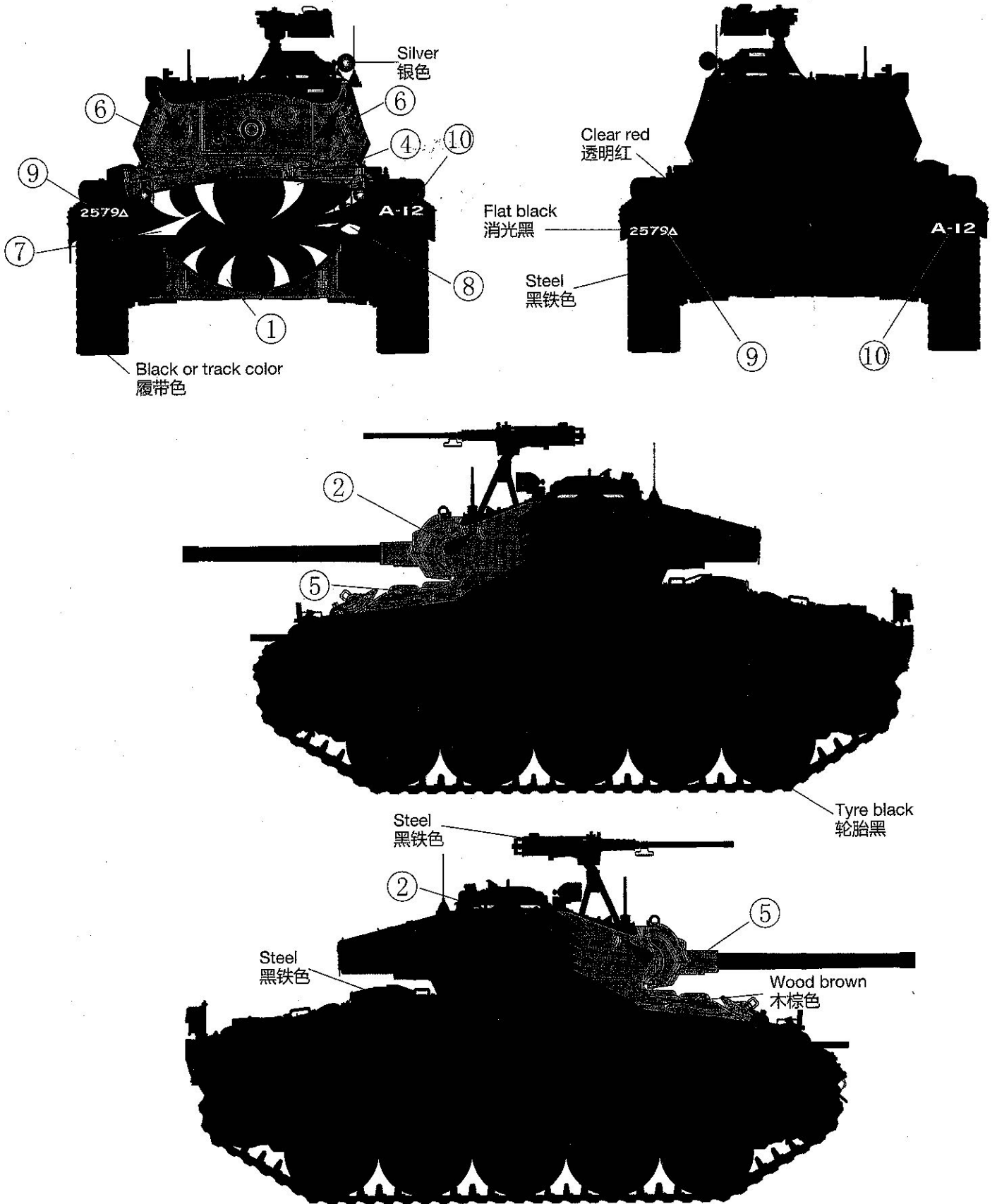
US 187th Airborne Regiment, Yong-Dong-Po, Seoul, South Korea, April 1951.  
 1951年4月在首尔（汉城）市永登浦地区作战之美军第187空降团之属下车辆。



Camouflage Scheme: Overall Olive Drab  
 全车涂橄榄绿色

# DECAL & COLOUR GUIDE 水贴及涂色指示:

★ Option:  
 US 79th Tank Battalion, Han River, South Korea 1950.  
 1950年在朝鲜半岛南部汉江作战之美军第79坦克营之属下车辆。



Camouflage Scheme: Overall Olive Drab  
 全车涂橄榄绿色