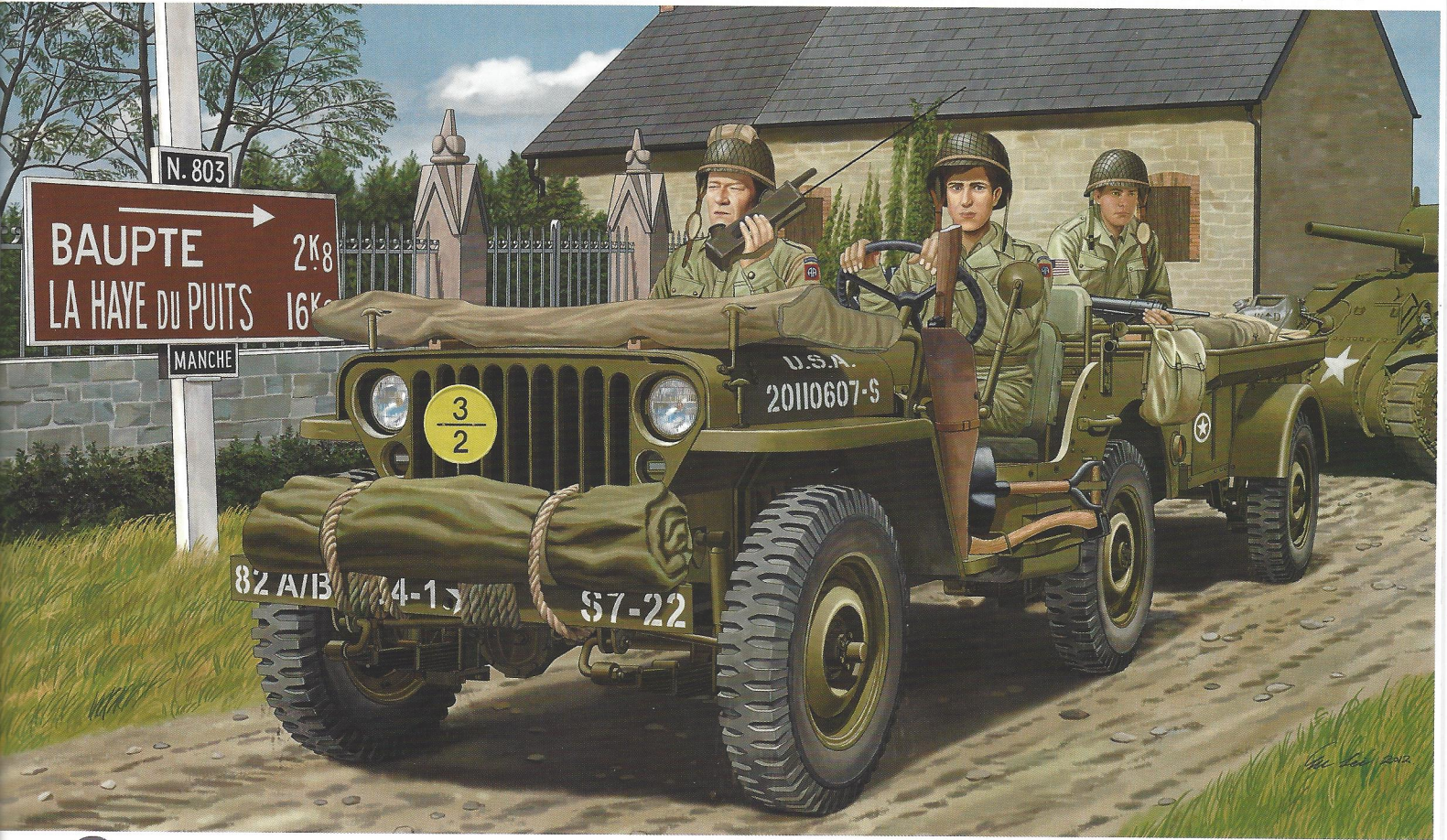


Kit No. CB-35106

# US GPW 1/4 ton 4x4 Utility Truck (Mod. 1942) w/10-CWT Trailer & Airborne Crew 1/35 SCALE

Bronco Models GPW 1/4吨多功能车辆 (1942年生产型) 连10-CWT拖挂车与美军空降兵乘员



In the late 1930's the United States Army issued a requirement for a light four wheel drive reconnaissance car. But little was done until early 1940 when American auto manufacturers were asked to submit designs. Only two contenders emerged, one by American Bantam, the other by Willys-Overland, the Bantam was the lead contender but was from a small company with limited production capacity. So the Bantam plans were passed to Willys and Ford for further refinement. By July 1941 the Willys MB was chosen as the winning design, and contracts were issued to both Willys and Ford to produce the vehicle. The Ford GPW was identical to the Willys MB but for the grill and other minor differences, This class of vehicle was called the "Jeep" by all allied servicemen, probably after "Eugene the Jeep" from the Popeye cartoon. Ford produced over 280,000 GPW's during WWII, these being used by all branches of the American and British military. The Ford GPW was also used by the Soviet Union and other allied nations, and was widely exported after WWII. The Jeep was a rugged 4x4 field car with a load capacity of 1/4 ton and a road speed of 105km/h. It was often armed with machine guns and was made famous by the British SAS and LRDG during the battle for North Africa 1942-43.



Information & research by Phil Greenwood

In den späten 1930ern veröffentlichte die amerikanische Regierung eine Ausschreibung für ein leichtes Allrad Aufklärungsfahrzeug. Doch erst Anfang 1940 unterbreiteten zwei Hersteller Ihre Vorschläge: American Bantam und Willys Overland. Der eigentlich bessere Mitbewerber Bantam war hatte nur begrenzte Kapazitäten, daher wurde deren Entwurf an Willys und Ford zur Weiterbearbeitung übergeben. Im Juli 1941 entschied sich die US Armee für den Willys MB, jedoch bezog man Ford in die Produktion mit ein. Die Ford GPWs unterschieden sich durch den Kühlergrill und weitere Kleinigkeiten. Der Begriff "Jeep" wurde schnell zur Bezeichnung auch für andere Typen dieser Fahrzeugklasse. Ford produzierte 280000 GPWs während des zweiten Weltkrieges für sämtliche Truppengattungen der Amerikaner und deren Alliierte. Die Sowjetunion und weitere Staaten erhielten ebenfalls Ford GPWs. Auch nach dem Ende des Krieges wurde weiterexportiert. Das Fahrzeug war ein robuster 4x4 Geländewagen mit einer möglichen Zuladung von 1 Tonne und einer max. Geschwindigkeit von 105 km/h. Als Bewaffnung waren MGs üblich. Berühmtheit erlangten die Fahrzeuge auch bei den SAS und LRDG Kommandoeinheiten in Nordafrika 1942-43.



Deutsche Übersetzung: Michael Knoblich

在上世纪 30 年代末期美国陆军提出需要一种轻巧及有四轮驱动性能并可作侦察用途的车辆, 要求国内汽车制造厂递交设计, 但反应只是凤毛麟角。这种情况直到 1940 年初才涌现二个合适的设计方案, 一个是美国精焊者公司, 另一家是威利公司。精焊者公司是主要竞争者, 但该公司规模较小, 而且产量有限, 因此精焊者原有的计划只好交由威利和福特这些大厂进一步发展。在 1941 年 7 月, 威利公司的 MB 型车款设计胜出后, 量产合同就交由威利和福特两大厂负责生产。福特厂所生产的 GPW 与威利厂的 MB 外形款式大致是相同, 区别就在车头水箱前的格栅和其他细节之不同, 这种车辆后来被盟军官兵冠名为 "吉普" 车, 原因是他们觉得这车的敏捷表现极像家喻户晓的 "吉普·尤金" 及 "大力水手" 两部动画片中的主角。福特的 GPW 在二战期间共生产了 280,000 台, 全分配到美军和英军各军事单位中使用。此外, GPW 还供应苏联和其他盟国, 战后更被广泛出口至全世界。吉普是一种富有越野功能及可靠性能高的 4 轮驱动车辆, 其可负重 1/4 吨和可达 105 公里的时速。这种车辆被英国陆军的 "特别空勤团 (SAS) 及远程沙漠作战部队 (LRDG) 装上重型机枪参与 1942-43 的北非战役。



# ILLUSTRATION 图示说明:

## CORRECT METHOD FOR APPLYING DECALS : HINWEISE ZUM ANBRINGEN DER DECALS : 正确使用水贴纸的方法:

1. Clean model parts surface with wet cloth. Entsprechende Stellen am Modell feucht reinigen.  
将需要贴水贴纸之部位表面擦干净。
2. Cut out the decal parts and dip them in cold water for 15 ~20 seconds. Decal ausschneiden und für 15-20 Sek. ins Wasser legen.  
将所需之贴纸剪下泡在清水里约15至20秒。
3. Place it on correct position of the model kit. Decal an der richtigen Stelle auflegen.  
将湿透之贴纸取出置放于正确之位置旁。
4. Slide off the decal from the base paper on to the model kit surface with a cotton stick. Decal mit Wattestäbchen festhalten und Papier darunter wegziehen.  
用棉花棒轻推贴纸表面使其从底纸滑出至模型表面之正确位置。
5. When decal get dry then complete. Decal mit Papiertuch andrücken und trocknen.  
待其自然干透后即完成。

## ICON INSTRUCTION: 图标说明:



Open Hole  
Loch bohren  
钻孔



Remove  
Abtrennen  
切除



2 Sets needed  
Vorgang wiederholen  
同样的制作二组



Bend  
Biegen  
曲折



Optional  
Auswahl  
可以选择采用



Apply Decal  
Decal anbringen  
贴水贴纸



Instant Glue For Metal  
Sekundenkleber verwenden  
瞬间接着剂,金属用



Fill Hole  
Verspachteln  
把孔填平



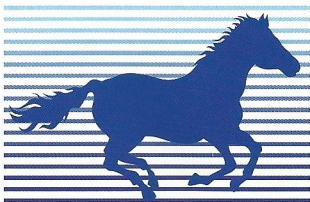
Do not cement  
Nicht kleben  
不用粘合

## COLOR SUGGESTION: FARBTABELLE: 涂装指引:

Color 涂料表	MR. Hobby	Hobby Color	Humbrol	Tamiya
Steel Stahl 黑铁色	H-18	C-28	53	/
Khaki Kaki 卡其色	H-81	C-55	19	X-7
Silver Silber 银色	H-8	J-8	11	X-11
Olive Green 橄榄绿	H-78	C-38	66	XF-62
Clear red Klar-Rot 透明红	/	/	/	XF-65
Wood brown Holzbraun 木棕色	H-37	C-43	/	/
Tyre black Reifenschwarz 轮胎黑	H-77	C-137	85	/
Semi-gloss black Schwarz Seidenmatt 半光黑色	/	C-82	/	/
Tan Tan 黄褐色	H-27	C-44	9	XF-55
Flat black Mattschwarz 消光黑	H-12	C-33	33	XF-1
Flat Flesh 肌肤色	H-44	C-51	61	XF-15
Leather Brown 皮革棕色	/	/	62	XF-62
Olive Drab 橄榄褐	H-304	C-304	116	XF-62
Field Green 原野绿	H-340	C-340	105	XF-4:1+XF-5:2
Metal Grey Grau-Metallic 金属灰	H-339	C-339	/	XF-56

## READ BEFORE ASSEMBLING: VOR ZUSAMMENBAU LESEN: 组装必读:

- Carefully Study instruction before assembling. Anleitung studieren und verständlich machen. 组装前请阅读清楚制作指引。
- Keep plastic model glue and tools away from children. Kleber, Farben, Werkzeuge und Plastiktüten von Kindern fernhalten. 胶水、油漆及工具勿让小孩接触。
- Do not use cement or paint near open flame or sparks. Kleber/Farbe nicht in Nähe von offenen Flammen. 胶水及油漆勿接触火种。
- Do not work in closed room. Nur in ausreichend belüfteten Räumen arbeiten. 勿在密封地方制作模型。



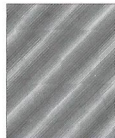
**BRONCO**

**Bronco Models**

Copyright © 2012

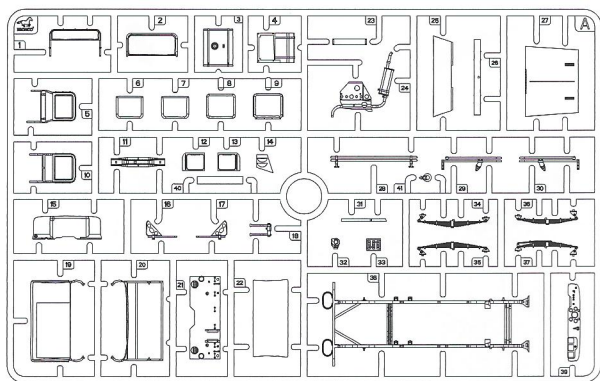
Made in China

中国制造

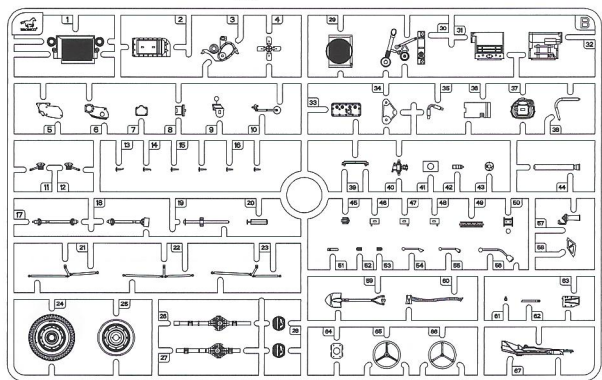


No use parts  
不要部件

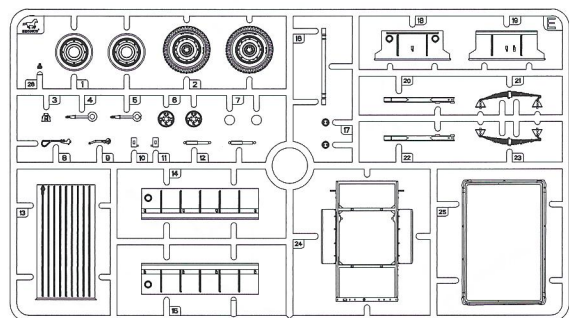
Ⓐ × 1



Ⓑ × 1

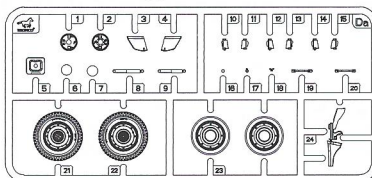


Ⓔ × 1

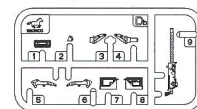


**CB35106**

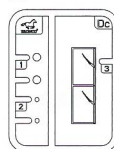
Ⓓa × 2



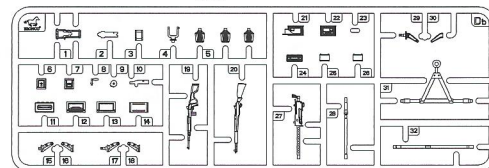
Ⓓb × 1



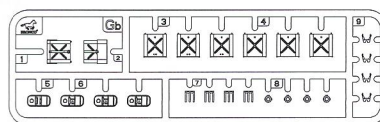
Ⓓc × 1



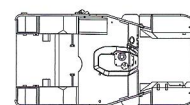
Ⓓb × 1



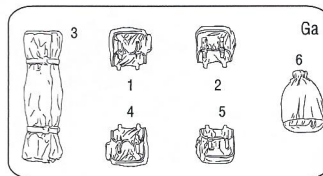
Ⓓb × 1



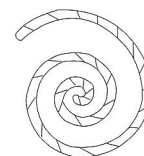
Ⓔ × 1



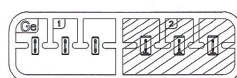
Ⓓa × 1



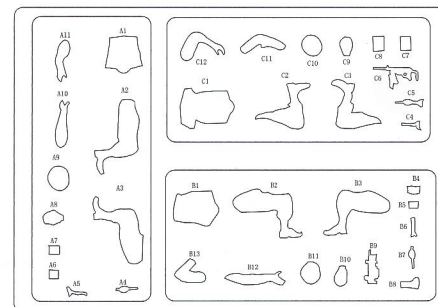
String  
绳子 × 1



Ⓓe × 2



Ⓕ × 1



Ⓓ × 1

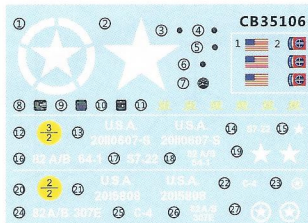


DECAL × 1

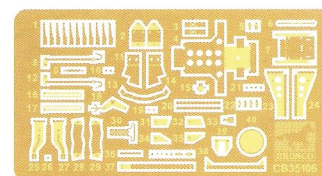
CB35106-B



DECAL × 1



Ⓖ × 1



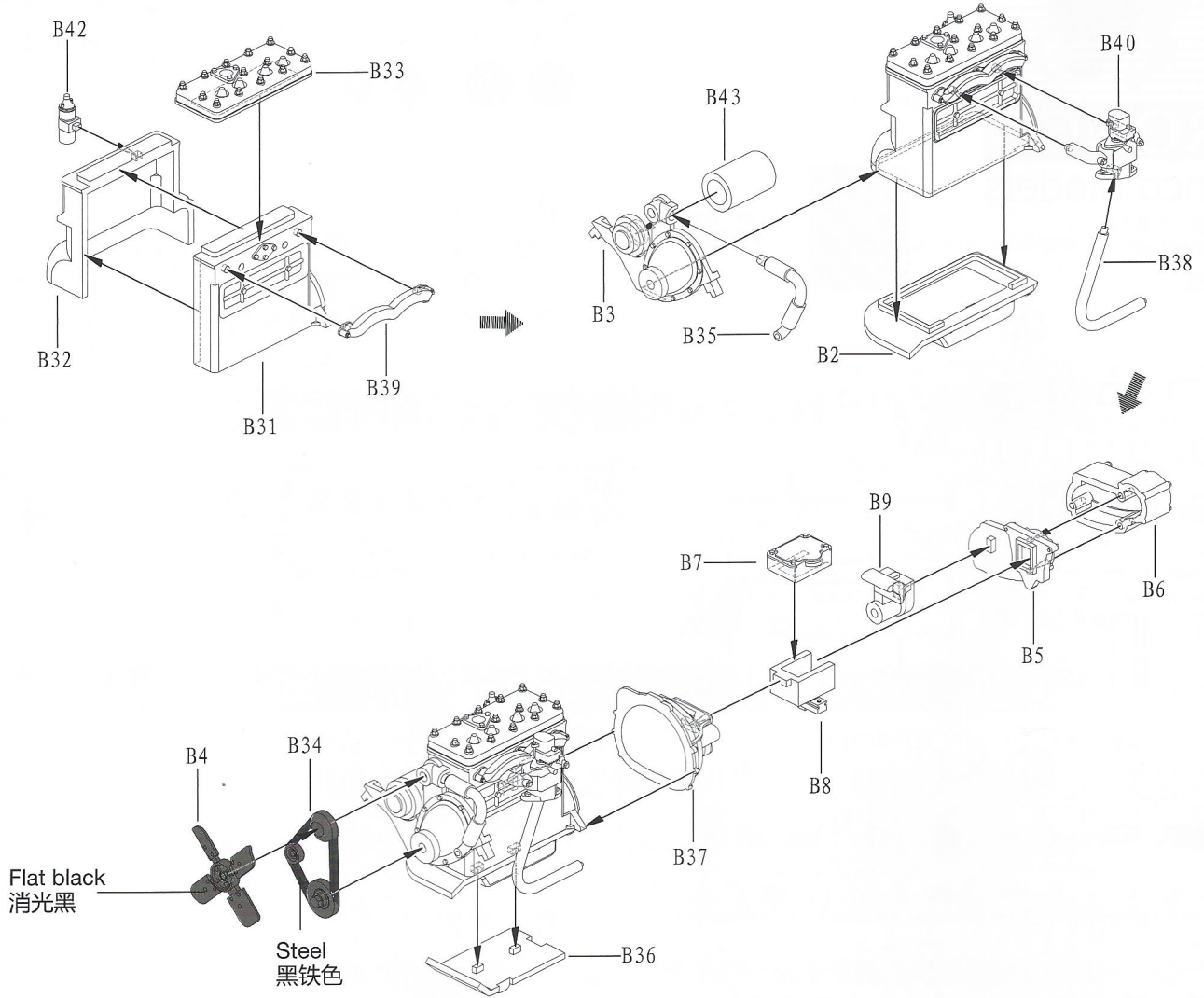
# ILLUSTRATION 图示说明:

Caution:

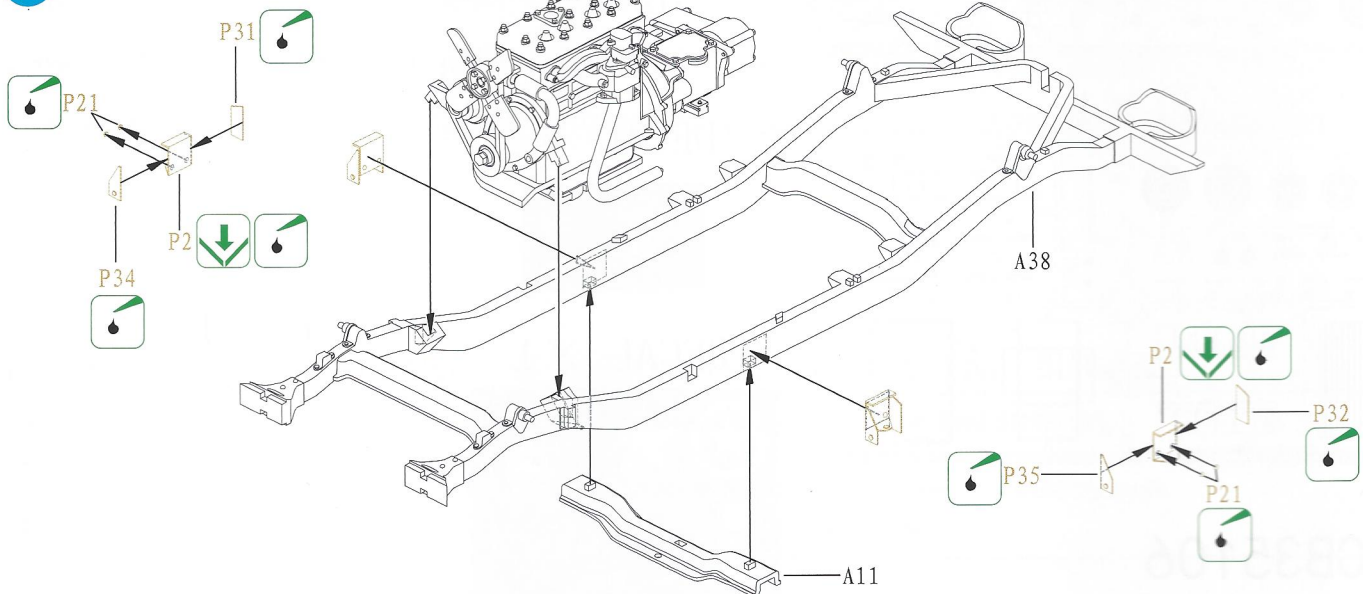
This kit contents a lot of small accurate parts, please carefully to read before to assembly.

此套件包含不少精细零件，请在制作前先翻阅说明书了解清楚。

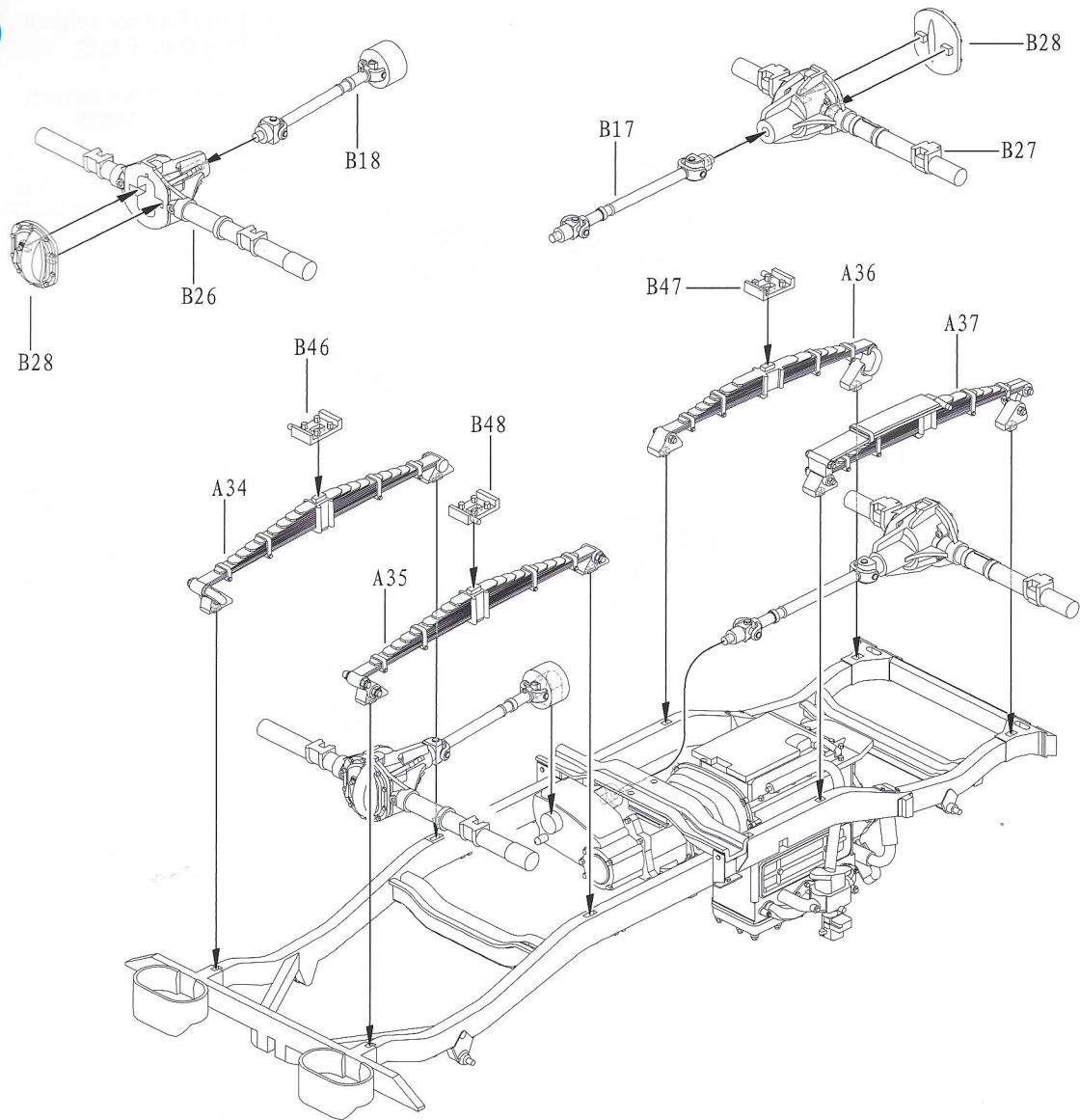
1



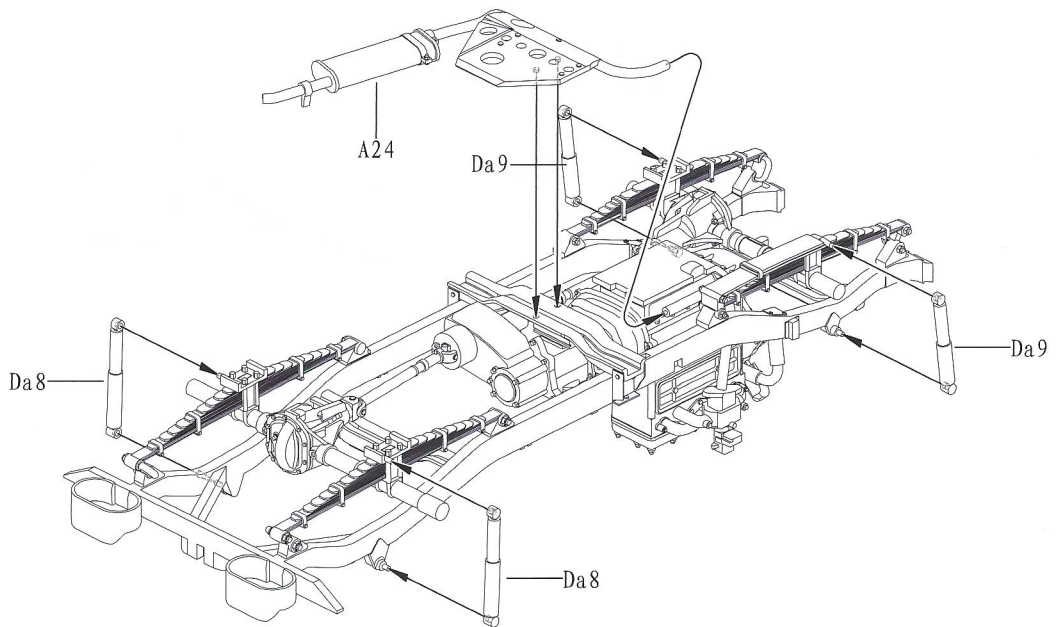
2



3



4



# ILLUSTRATION 图示说明:

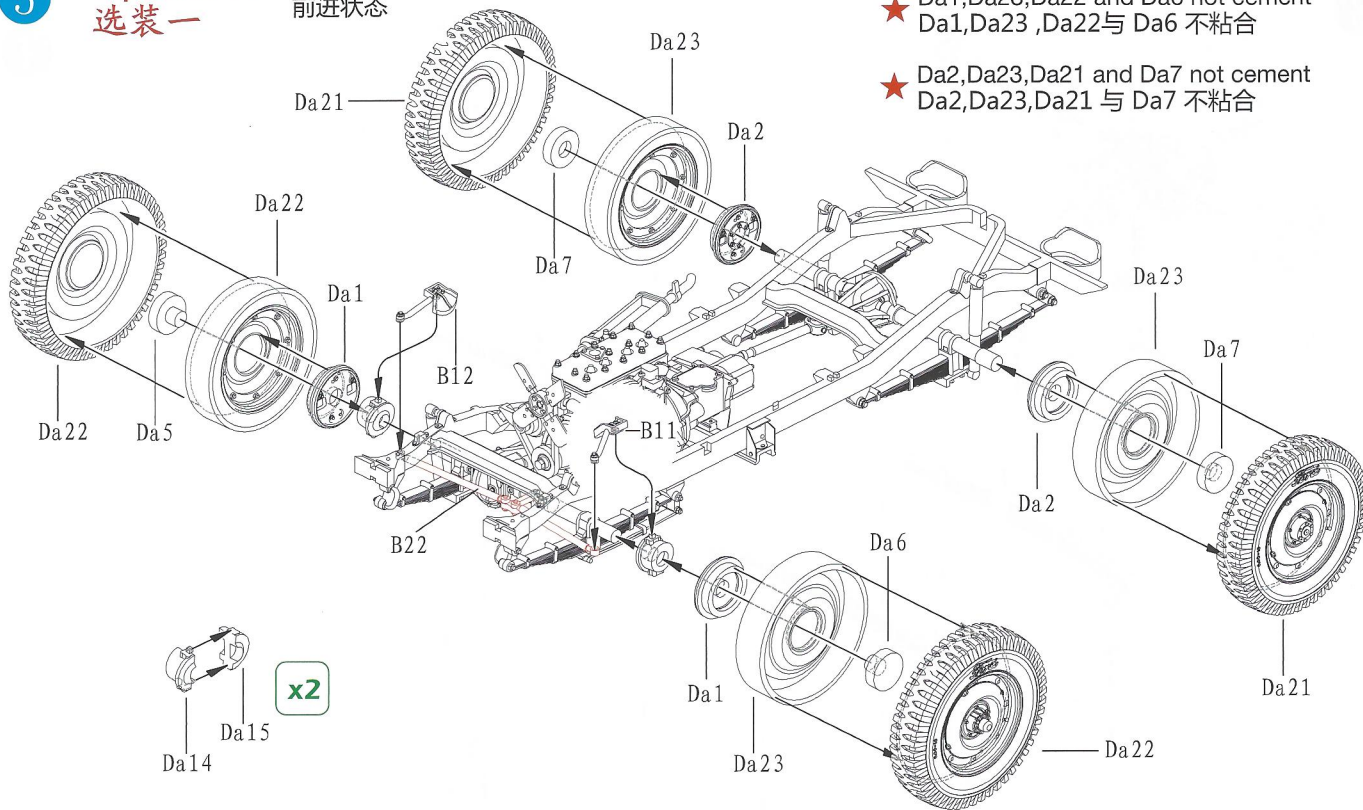
5

**Option 1:** Forward position  
前进状态

选装一

★ Da1, Da23, Da22 and Da6 not cement  
Da1, Da23, Da22与 Da6 不粘合

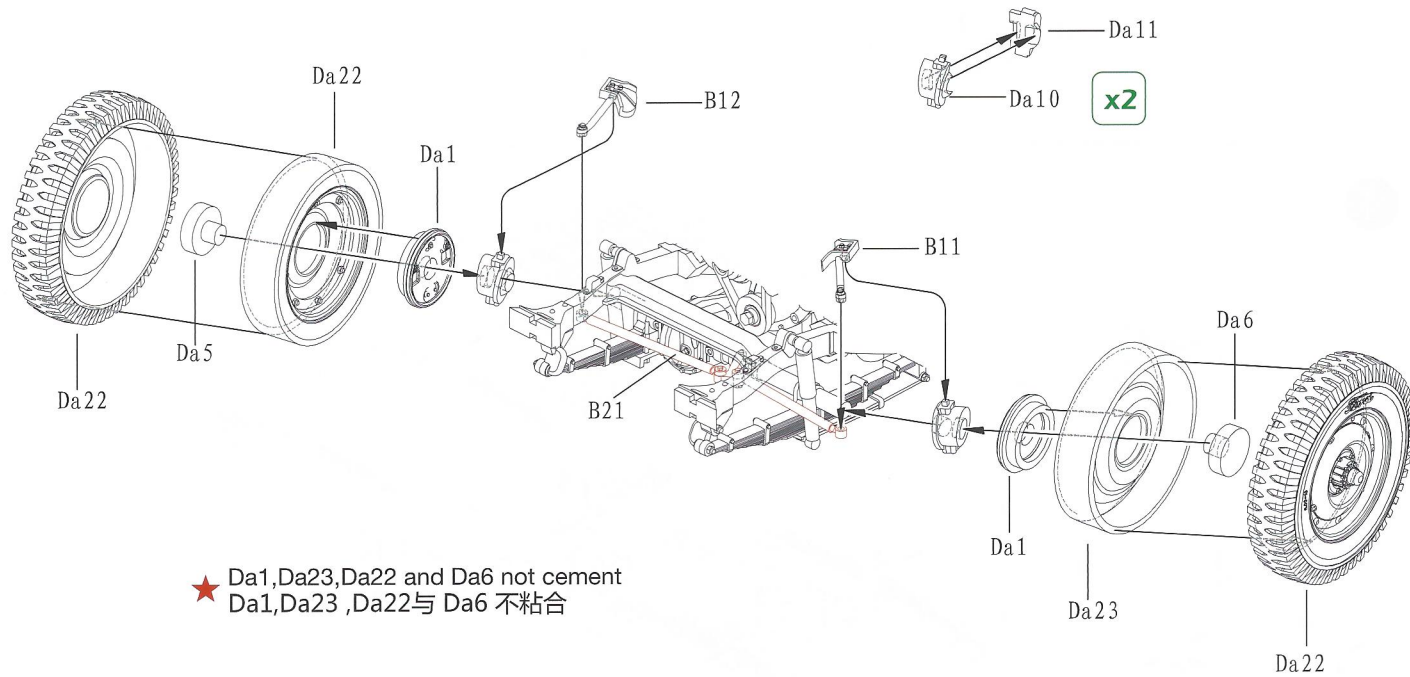
★ Da2, Da23, Da21 and Da7 not cement  
Da2, Da23, Da21与 Da7 不粘合



6

**Option 2:** Left-turn position  
左转状态

选装二



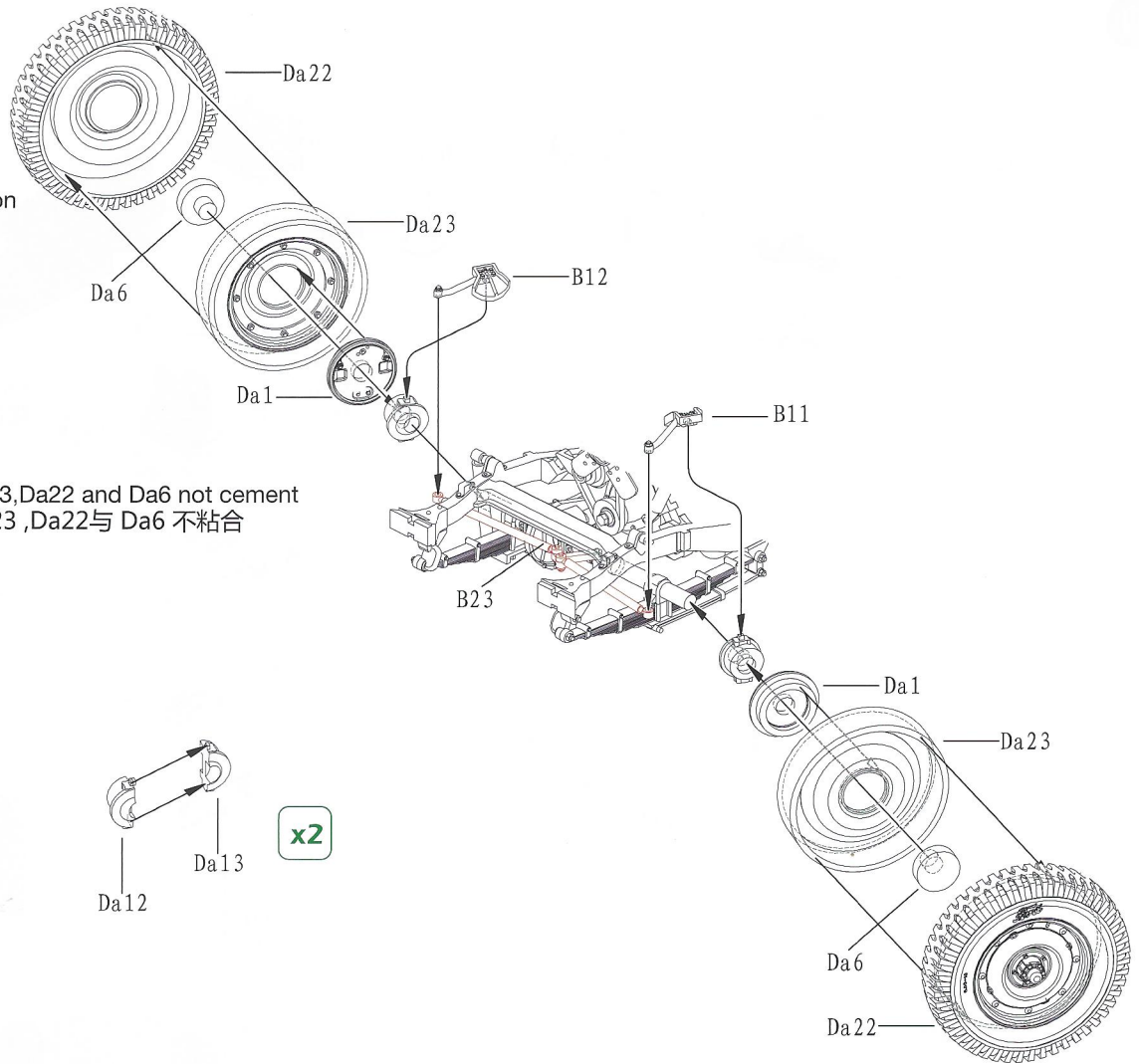
★ Da1, Da23, Da22 and Da6 not cement  
Da1, Da23, Da22与 Da6 不粘合

7

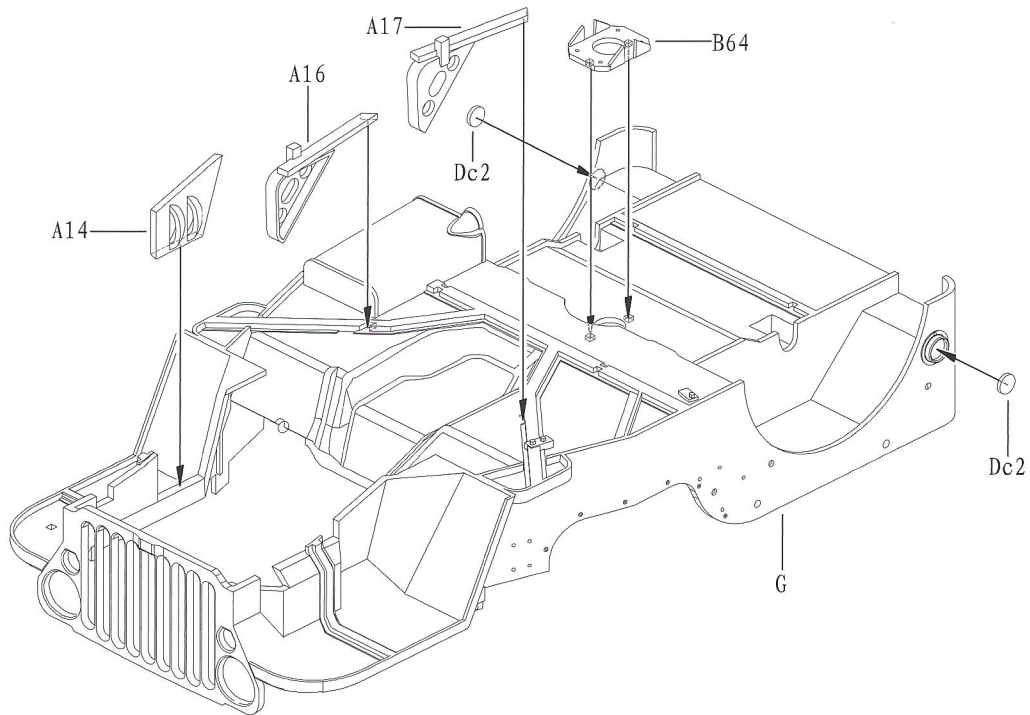
Option 3:  
选装三

Right-turn position  
右转状态

★ Da1, Da23, Da22 and Da6 not cement  
Da1, Da23, Da22与 Da6 不粘合

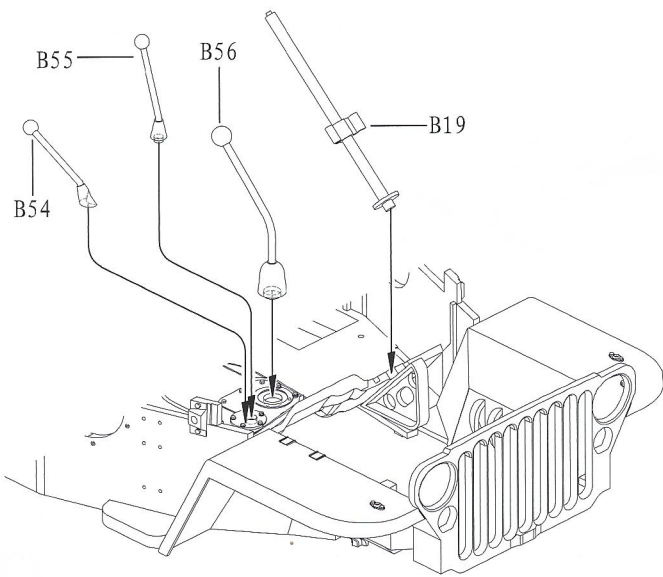
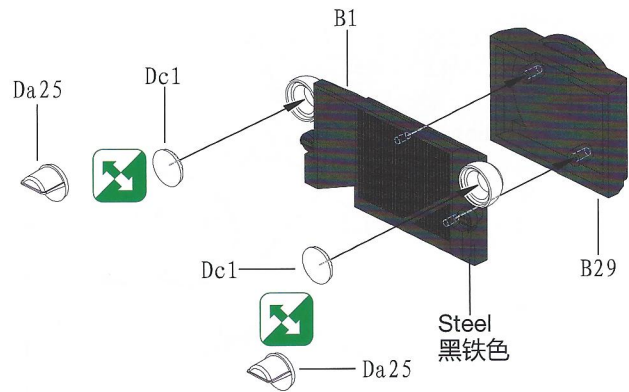
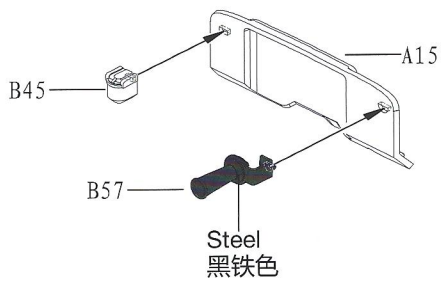


8

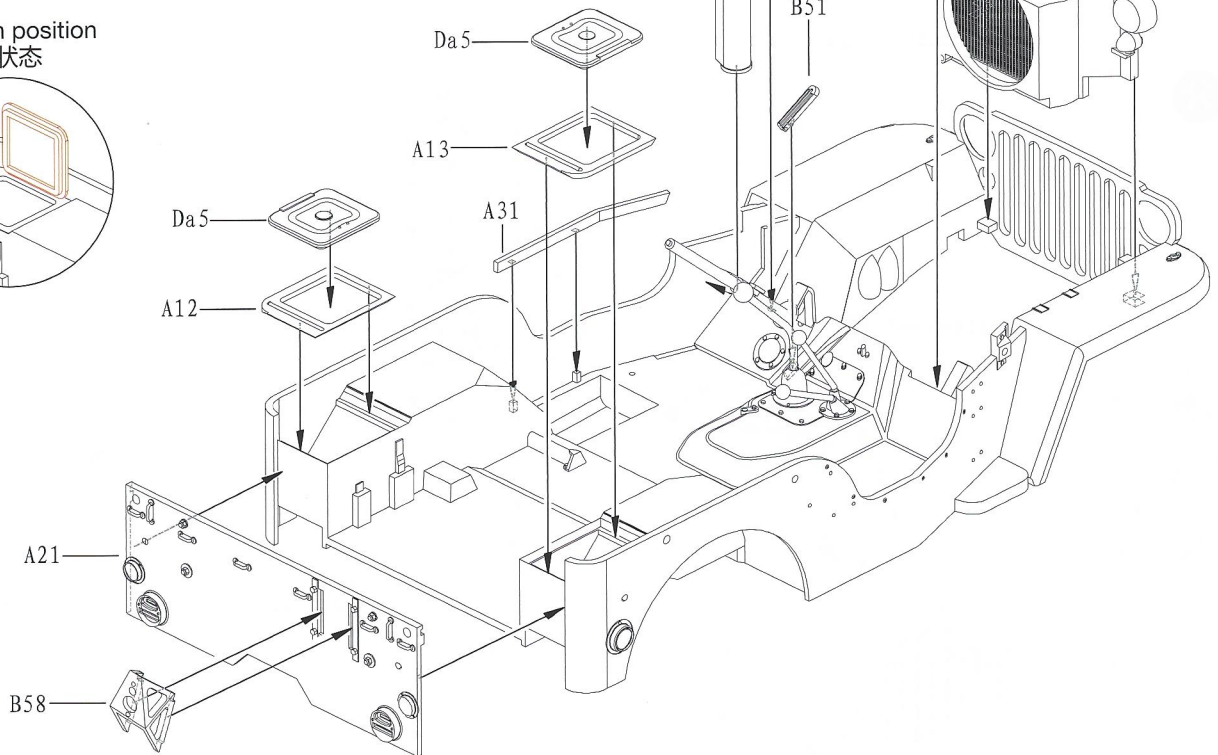
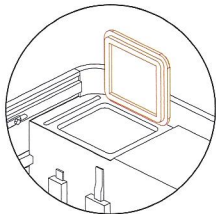


# ILLUSTRATION 图示说明:

9

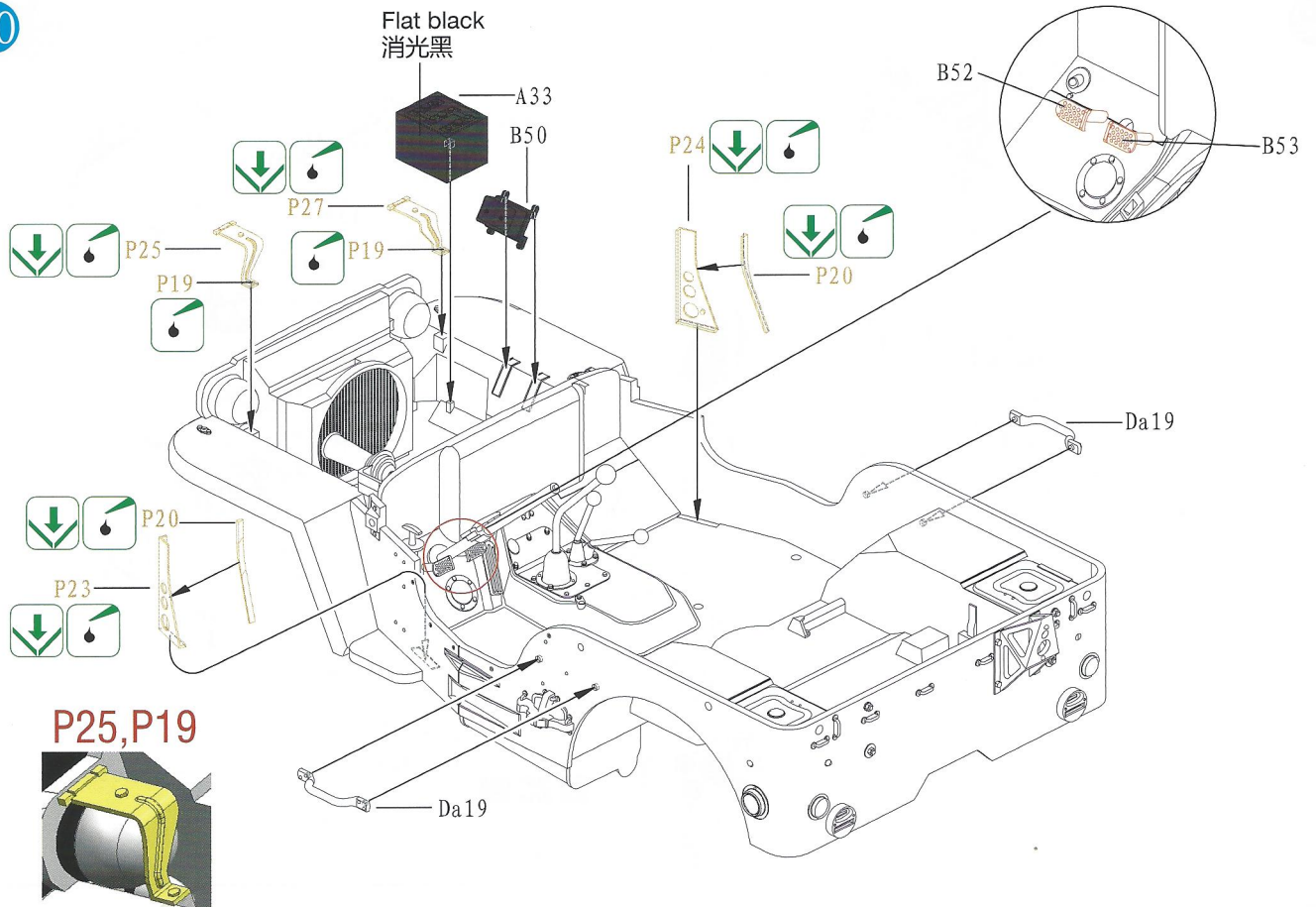


Open position  
打开状态

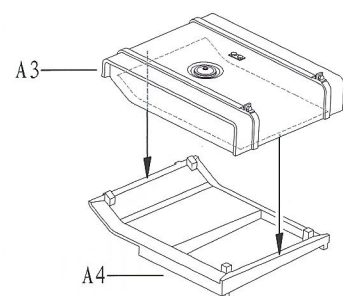
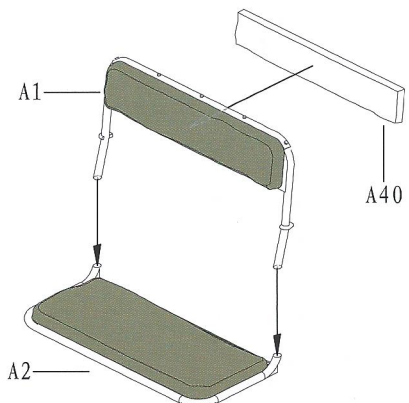
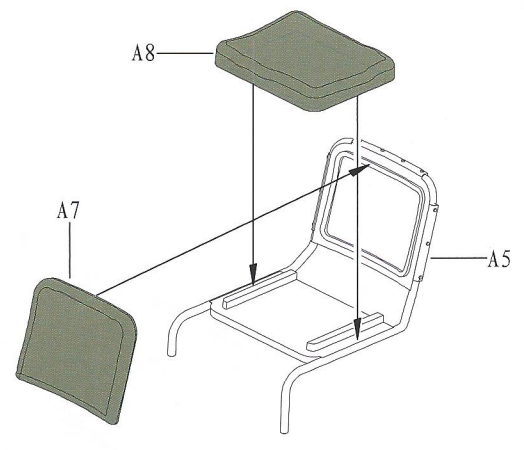
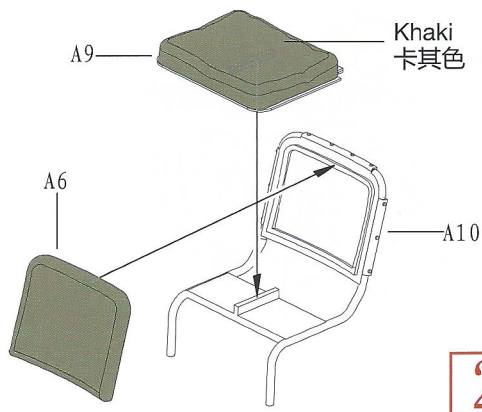




10

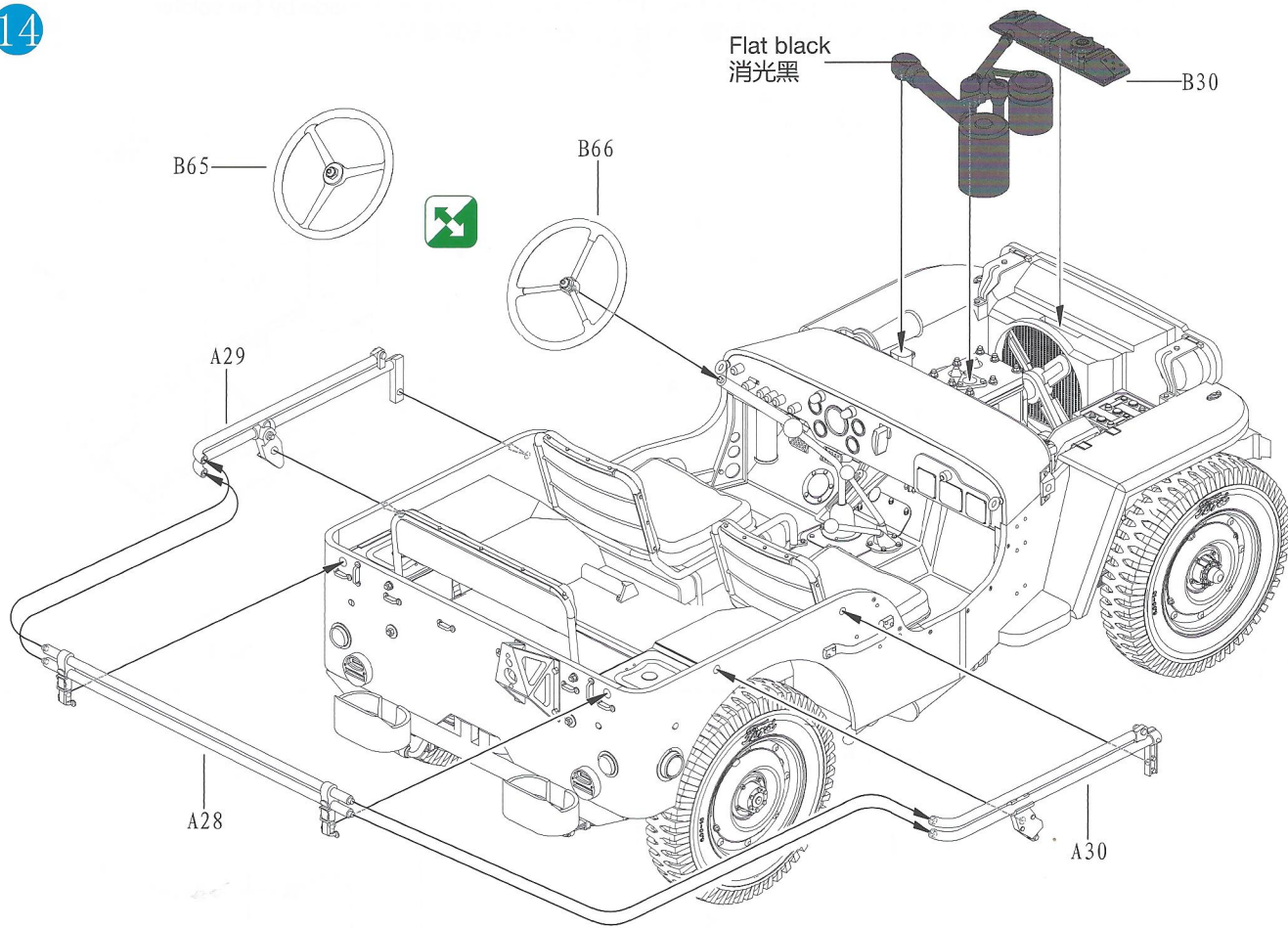


11



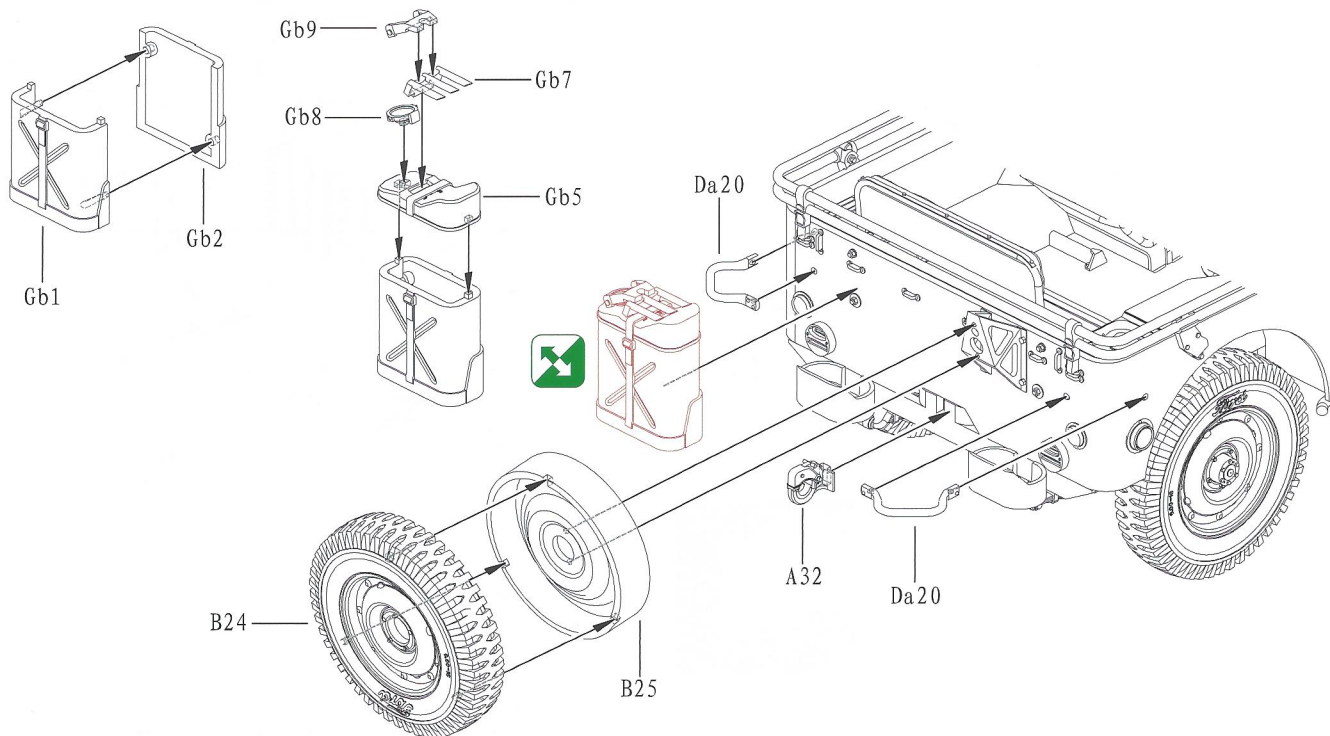


14



15

★ Caution: Jerry can not a standard equipment for this GPW truck, which just a field made by the soldier.  
 注意：后备油桶非此车上的标准配置，只是在战场上士兵按需要加添。

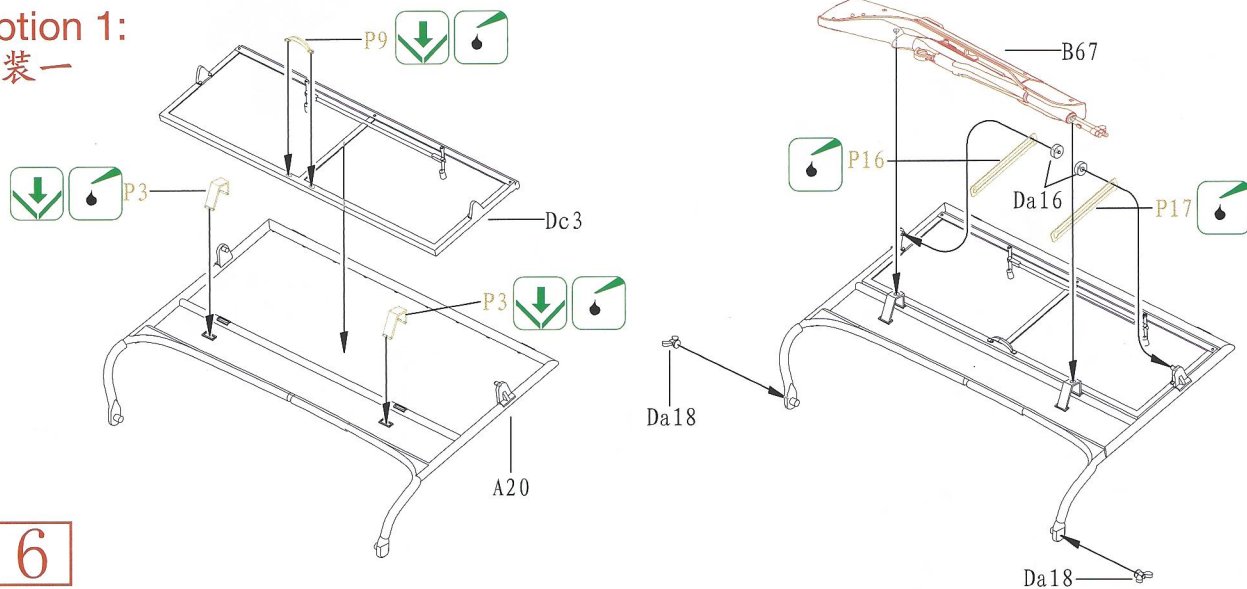


# ILLUSTRATION 图示说明:

16

★ Caution: Part B67 not a standard equipment for this GPW truck, which just a field made by the soldier.  
 注意：挡风玻璃上的B67零件非此车上的标准配置，只是在战场上士兵按需要加添。

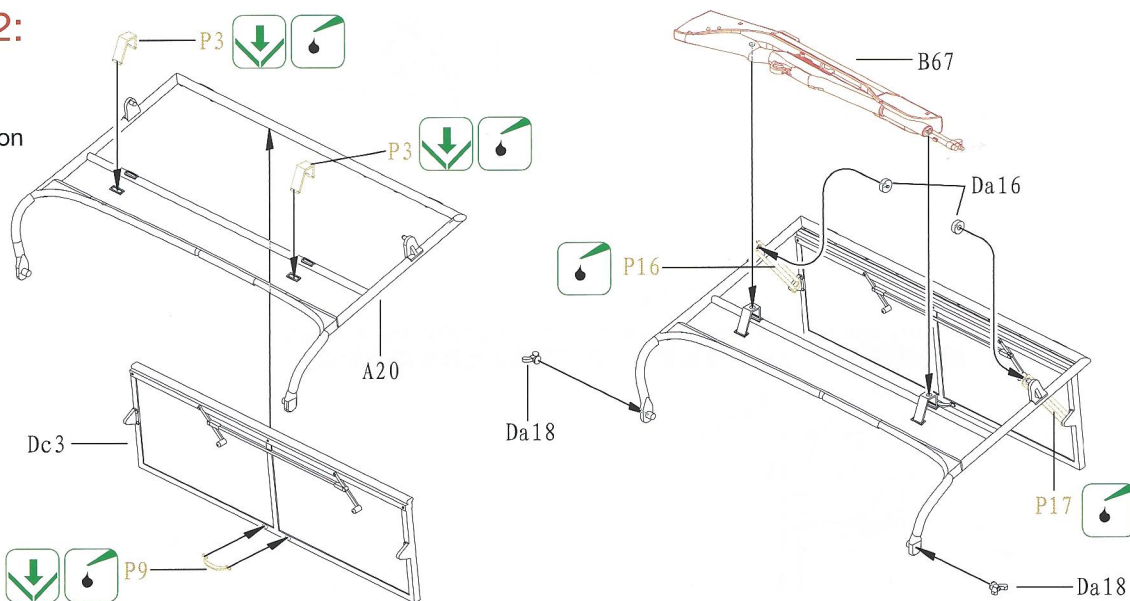
## Option 1: 选装一



6

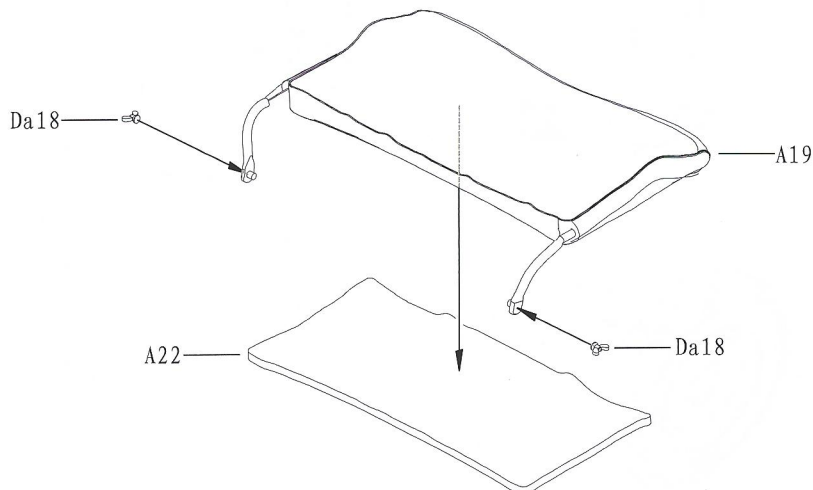
## Option 2: 选装二

Open position  
打开状态



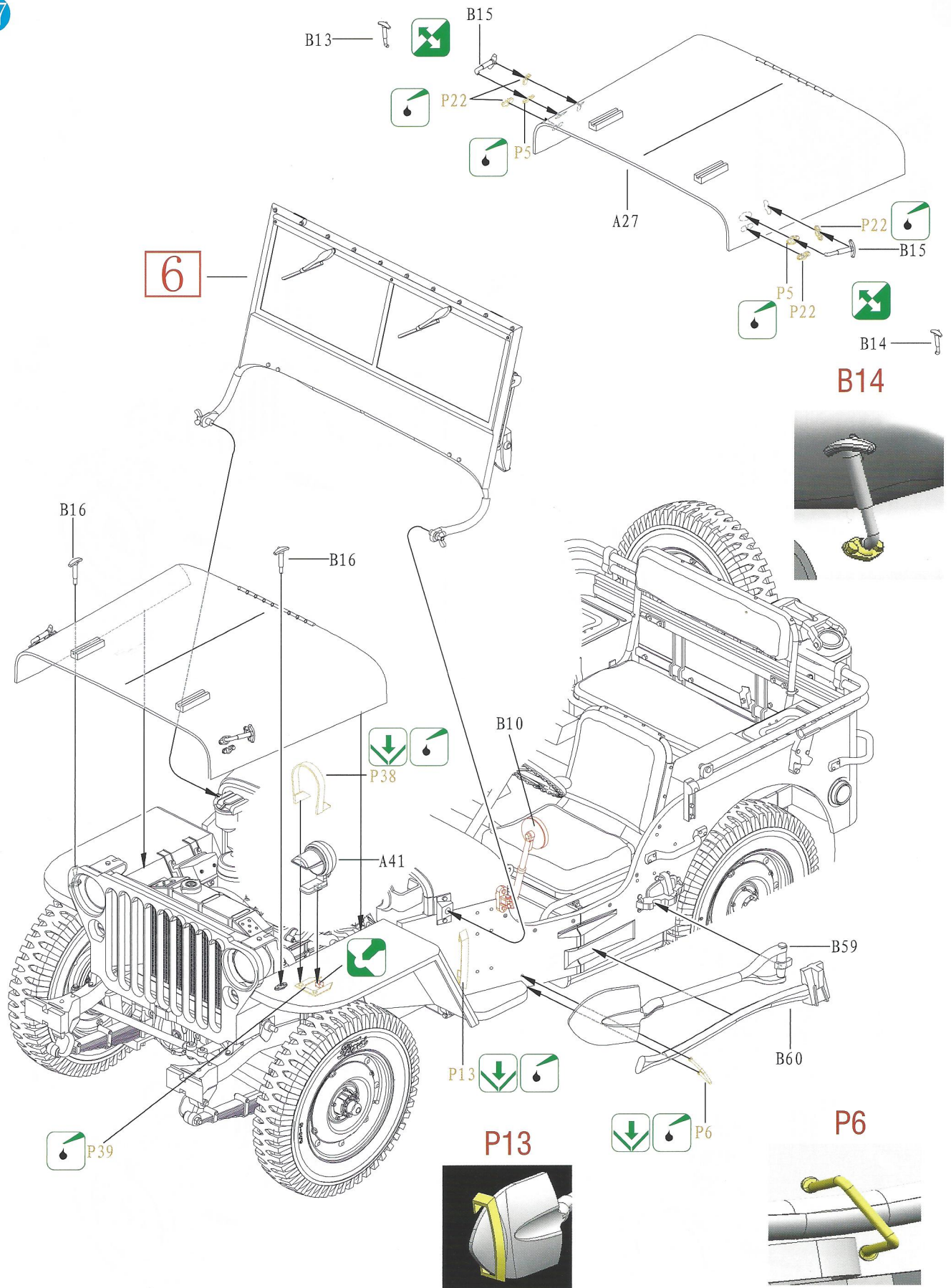
6

## Option 3: 选装三



6

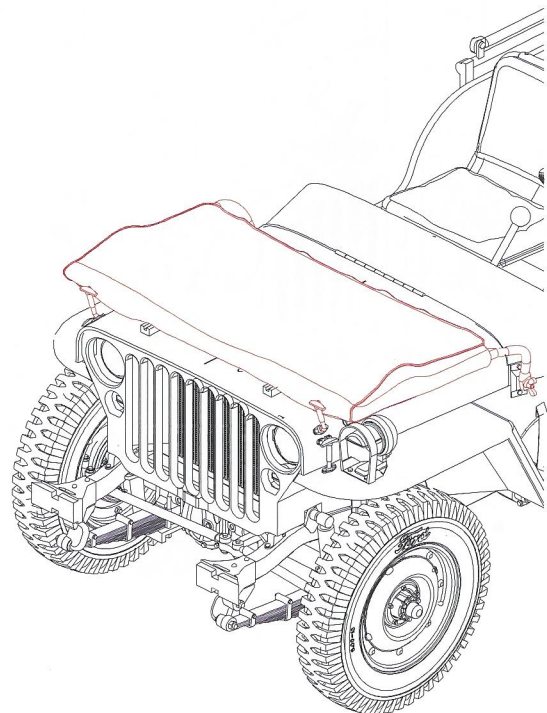
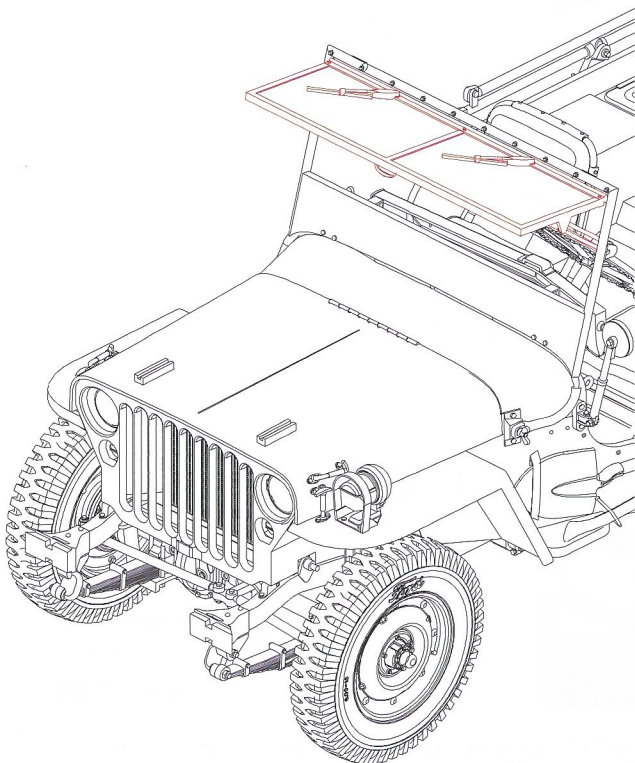
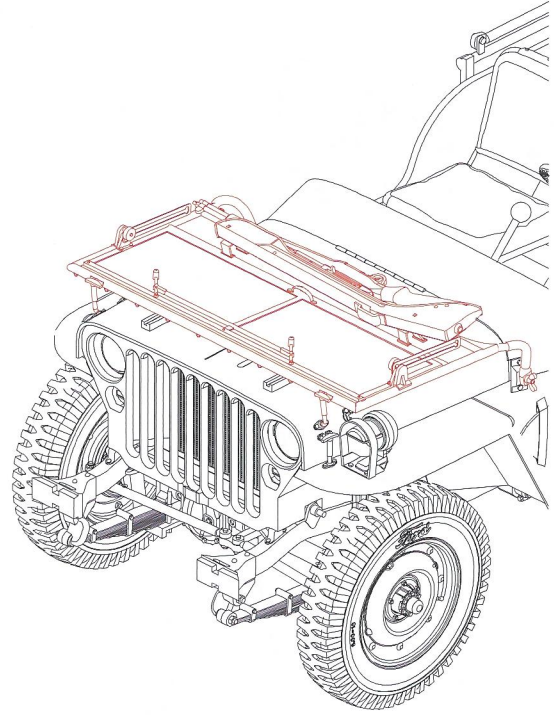
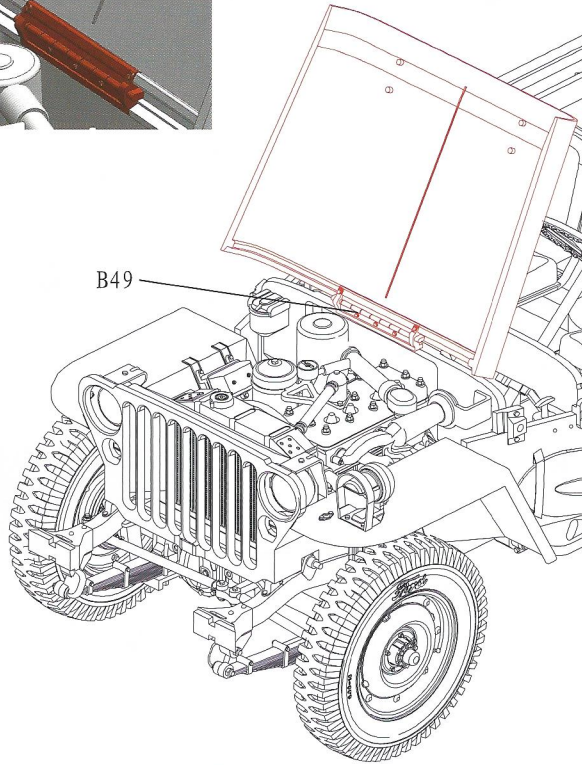
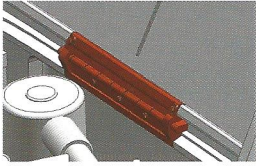
17



★ Caution: Part A41 and P38 not a standard equipment for this GPW truck, which just a field made by the soldier.  
 注意：A41和P38零件非此车上的标准配置，只是在战场上士兵按需要加添。

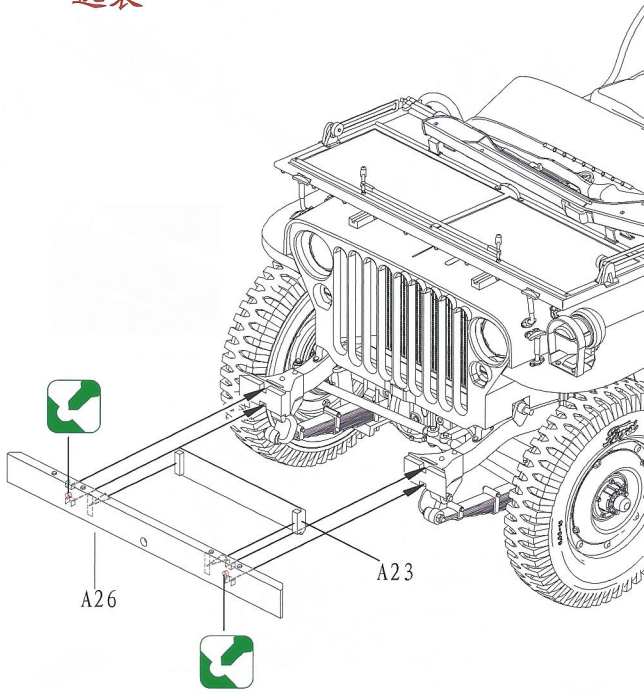
Open position  
打开状态

B49



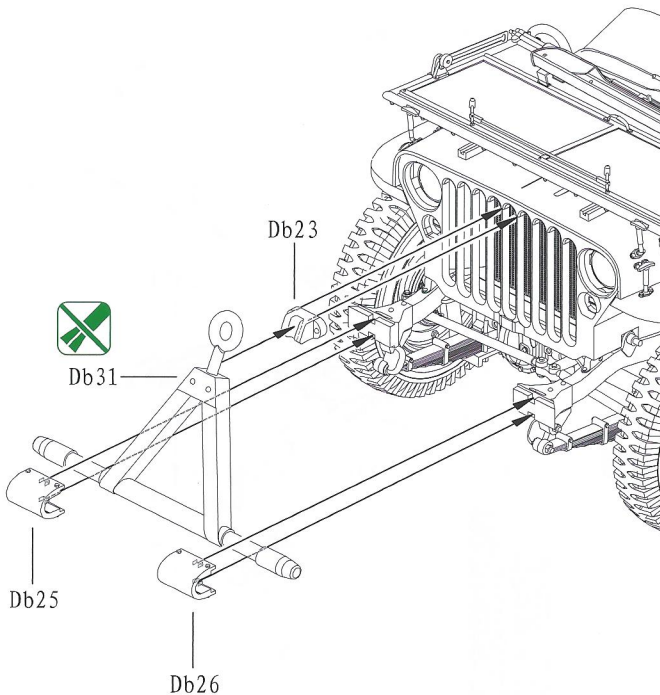
19

Option 1:  
选装一

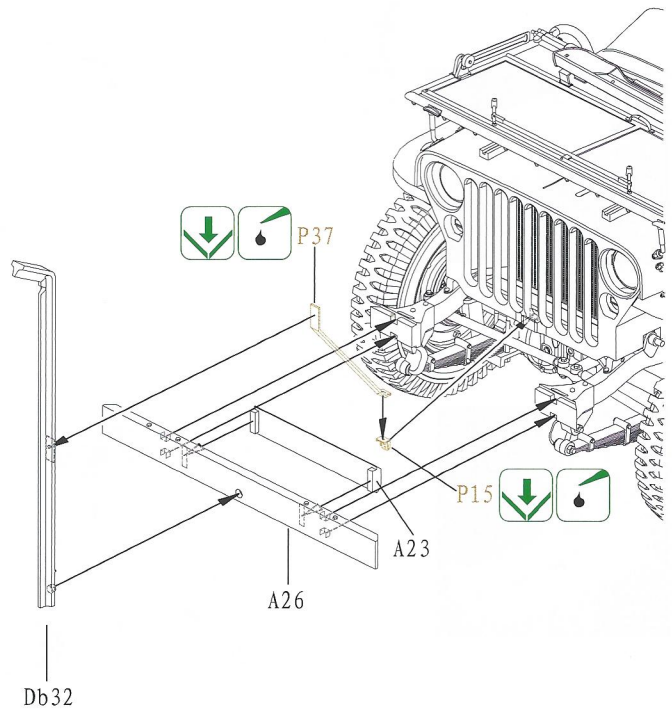


★ Caution: Drill the small hole on parts A26 if necessary.  
注意：如有需要在A26上钻小孔。

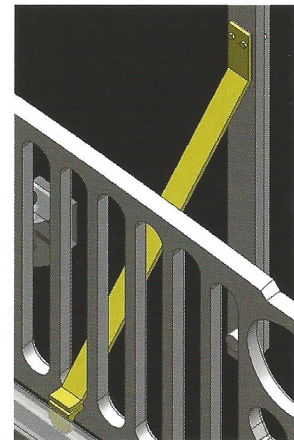
Option 2:  
选装二



Option 3:  
选装三

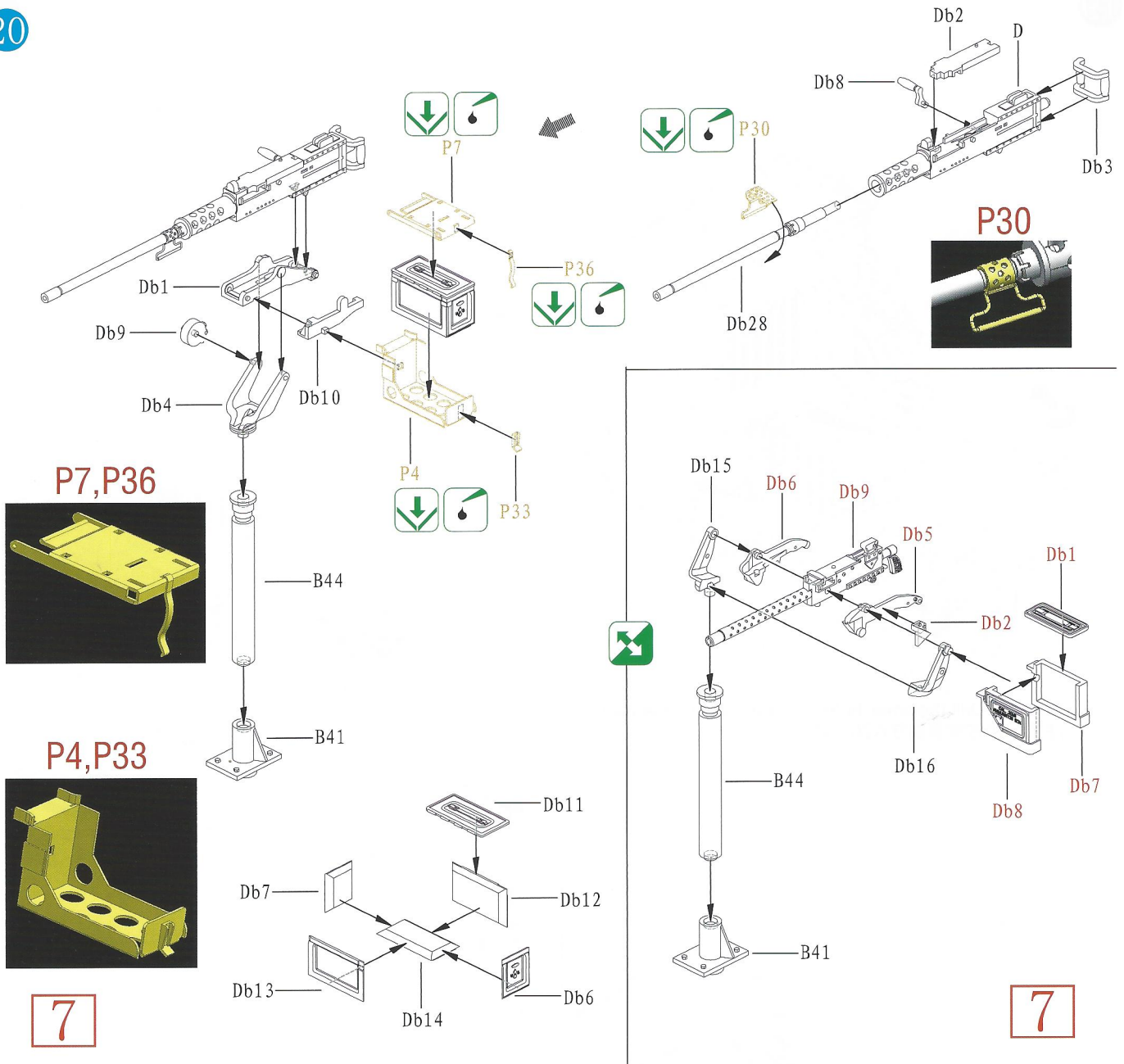


P37,P15

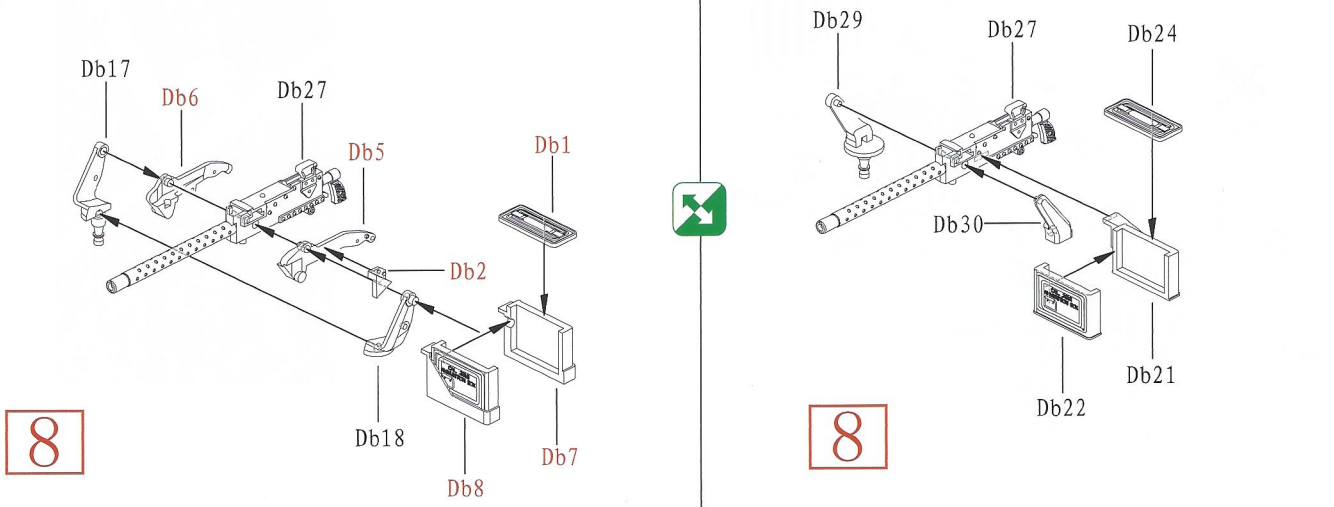


# ILLUSTRATION 图示说明:

20

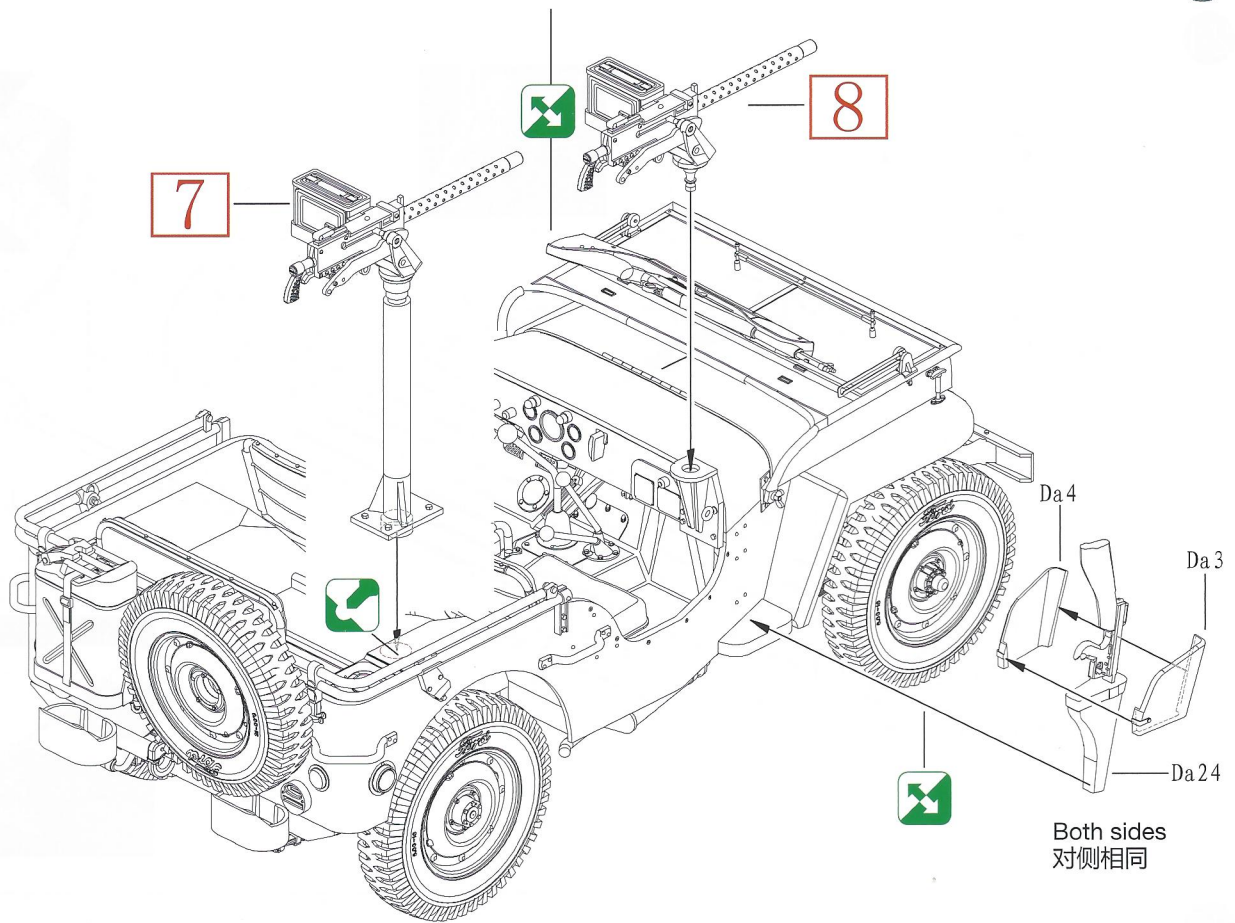


21



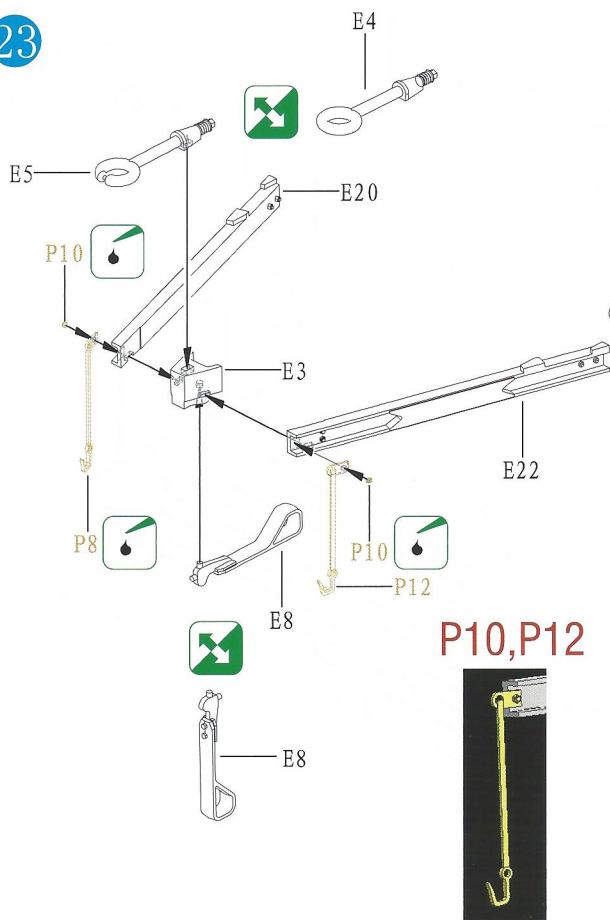


22

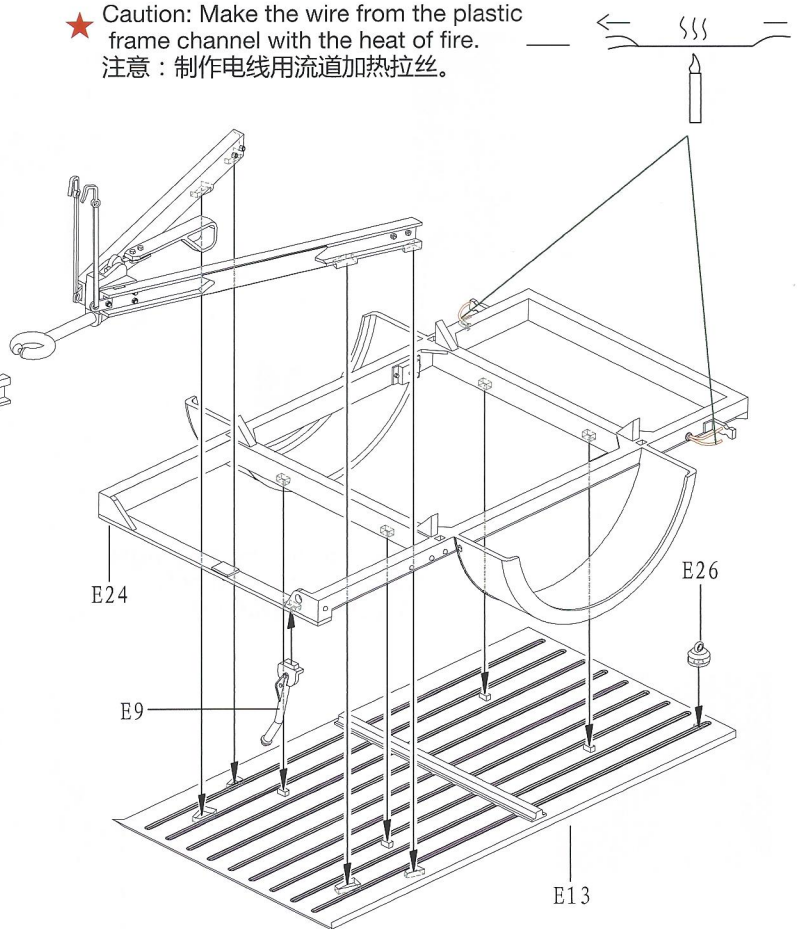


Both sides  
对侧相同

23

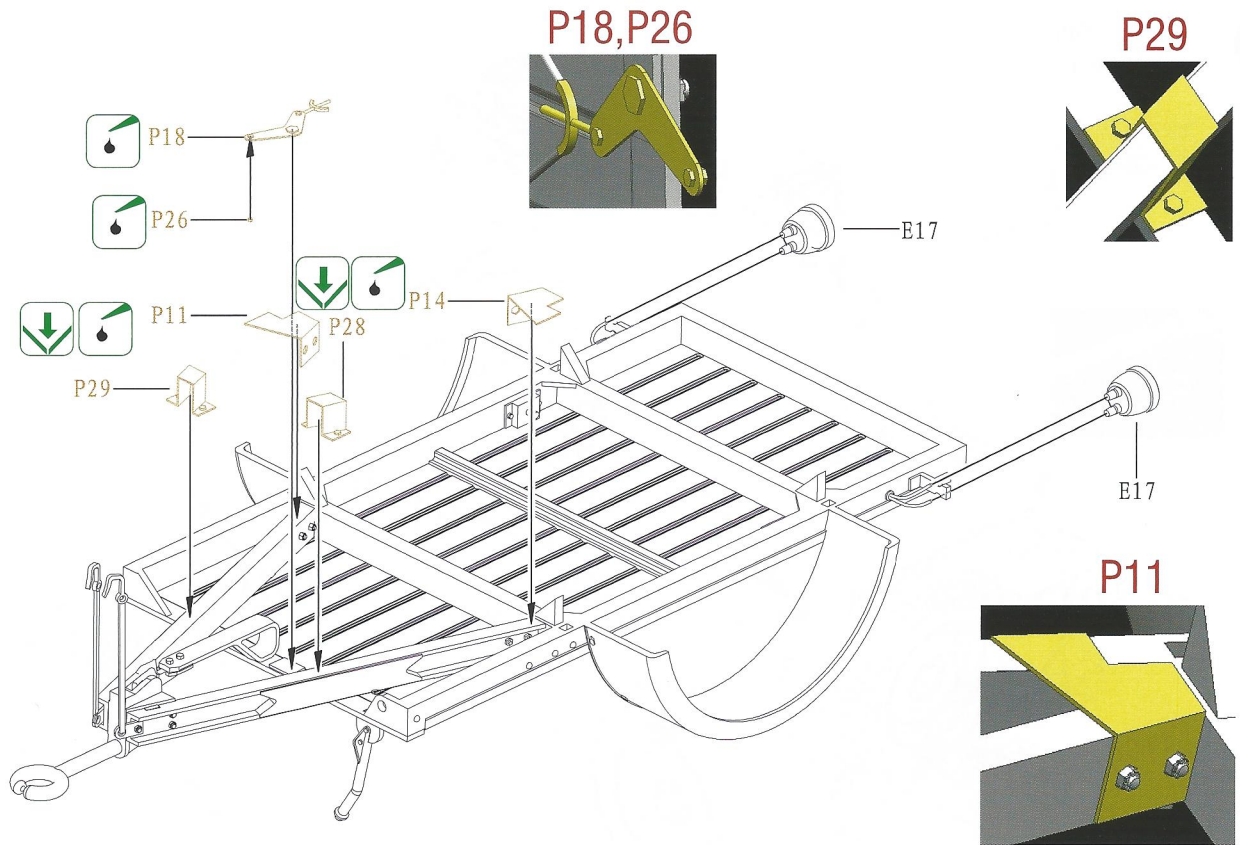


★ Caution: Make the wire from the plastic frame channel with the heat of fire.  
注意：制作电线用流道加热拉丝。

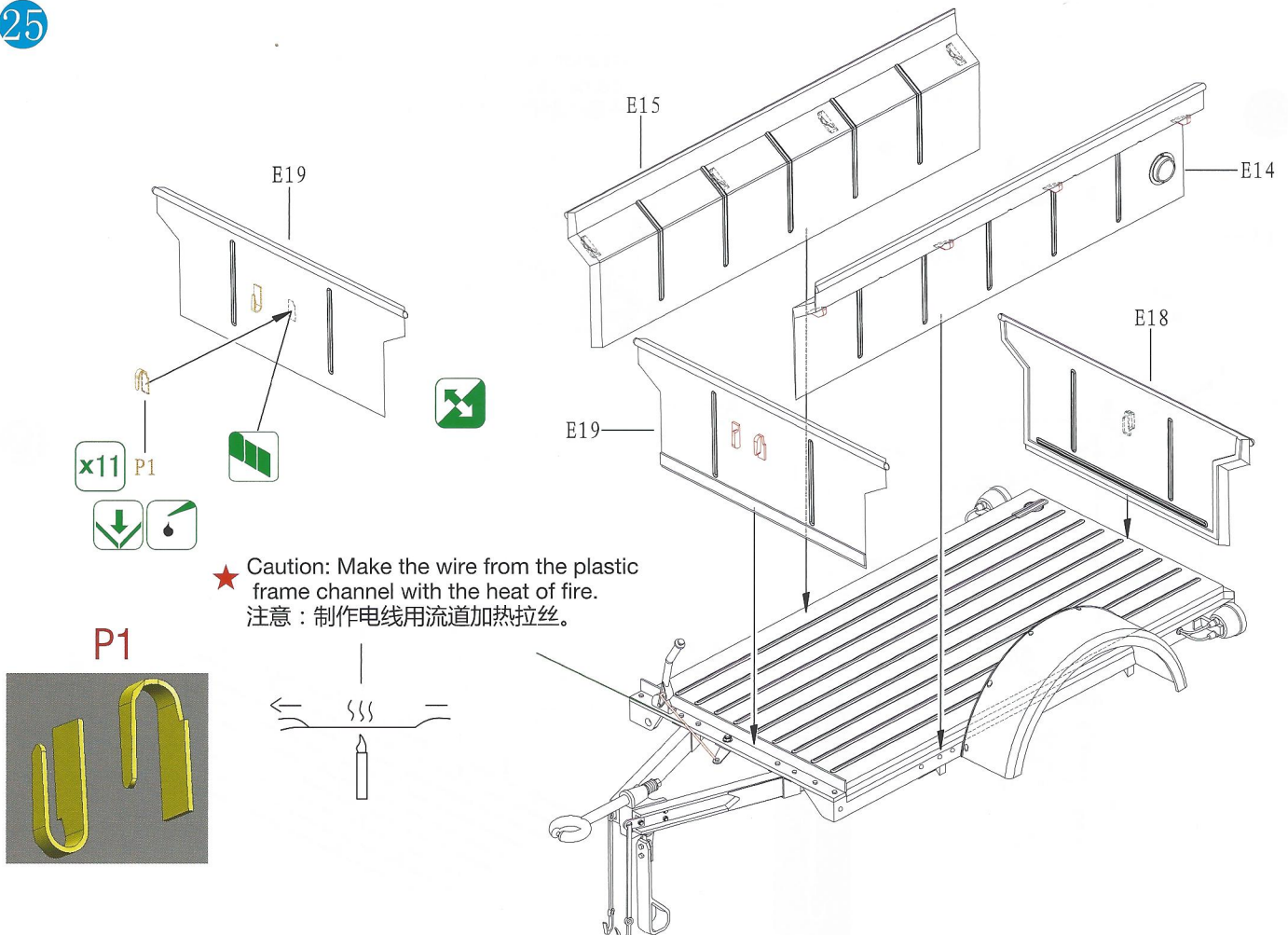


# ILLUSTRATION 图示说明:

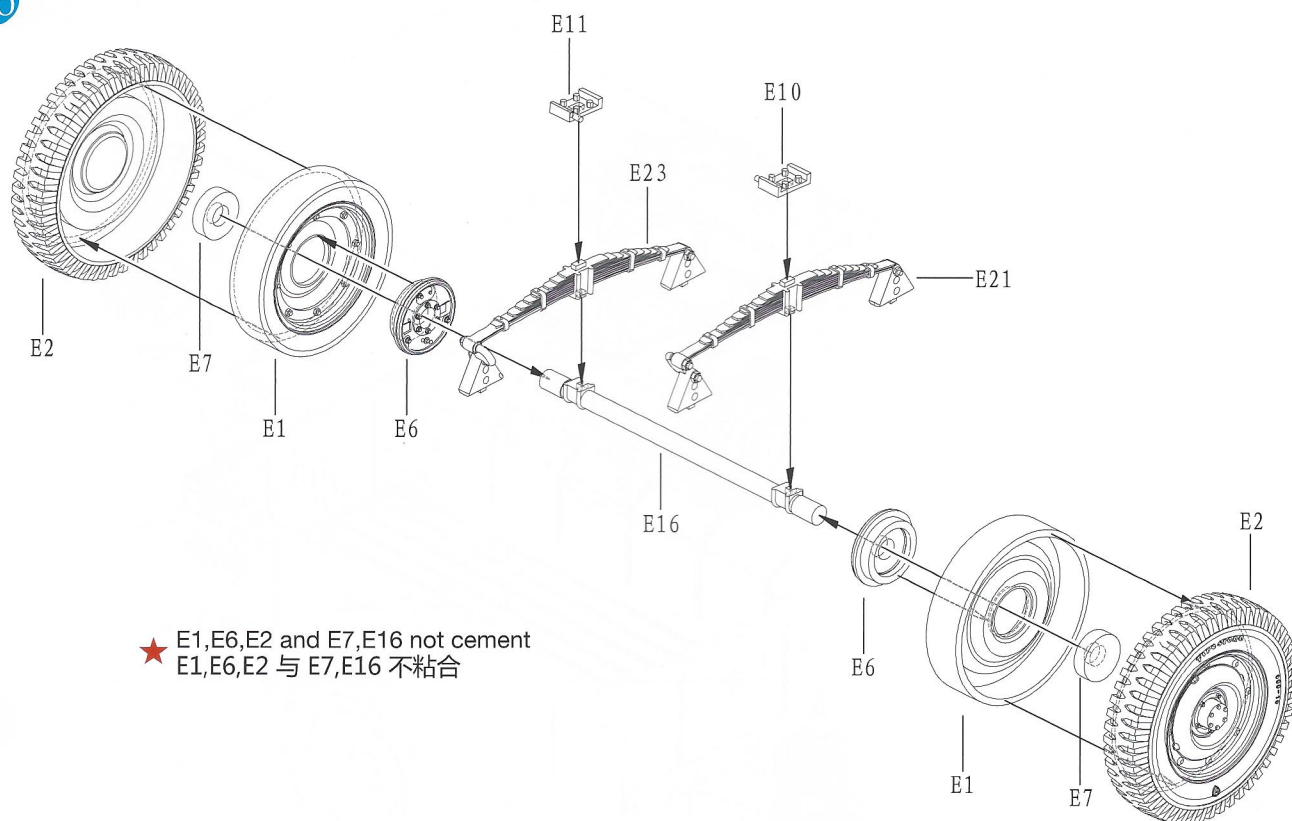
24



25

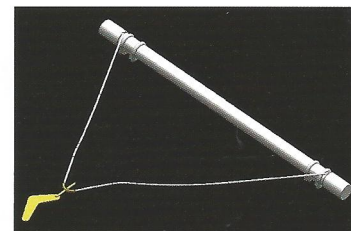
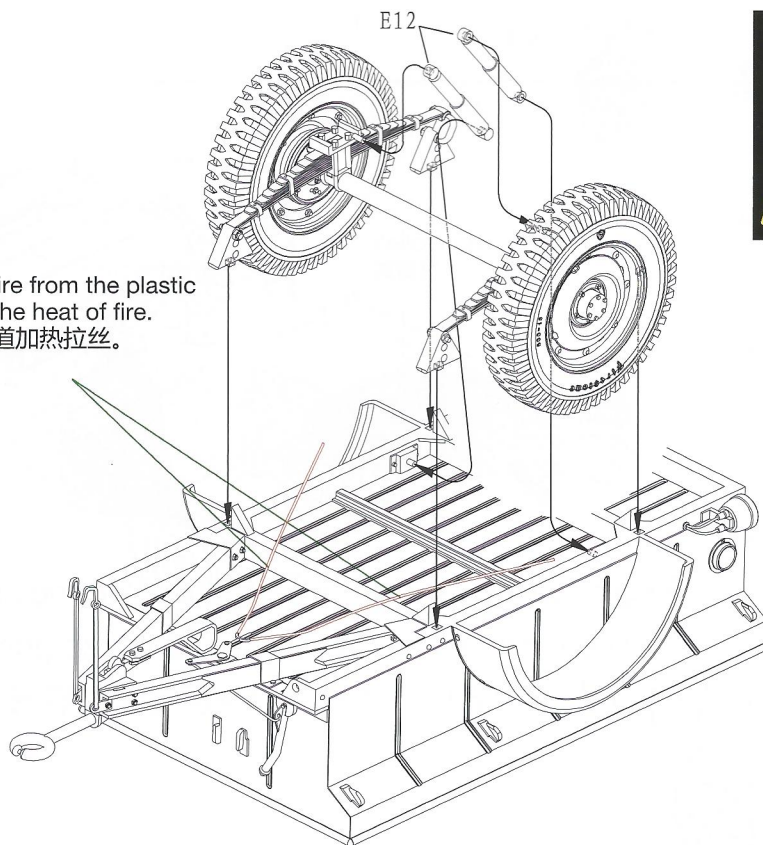
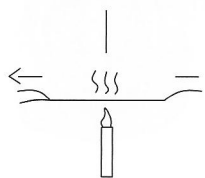


26

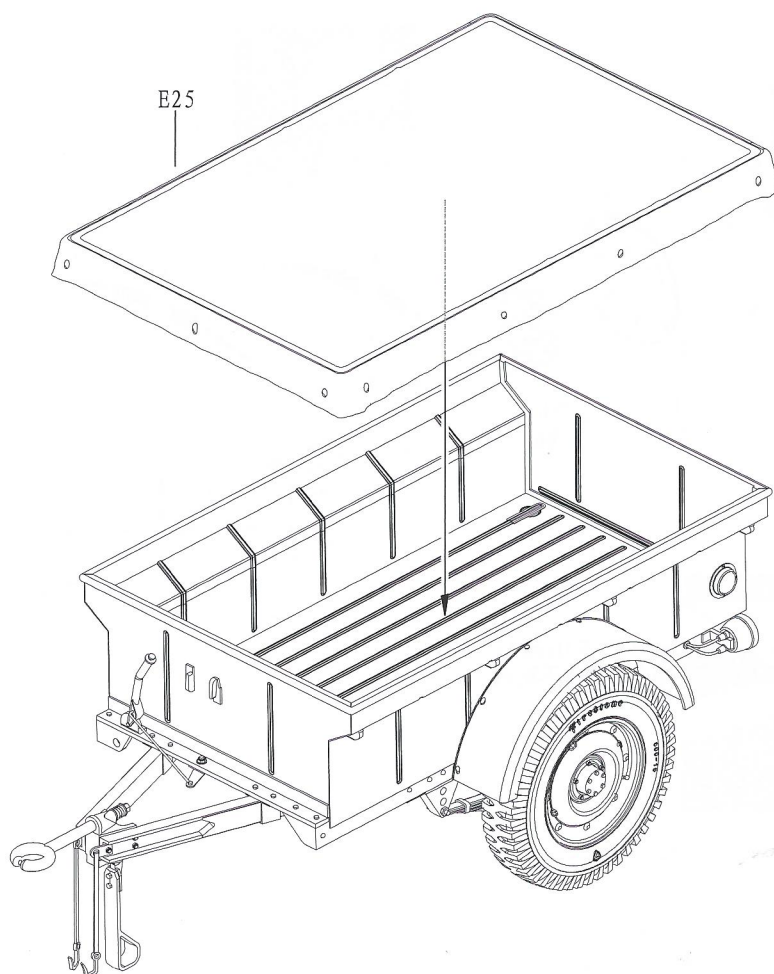


27

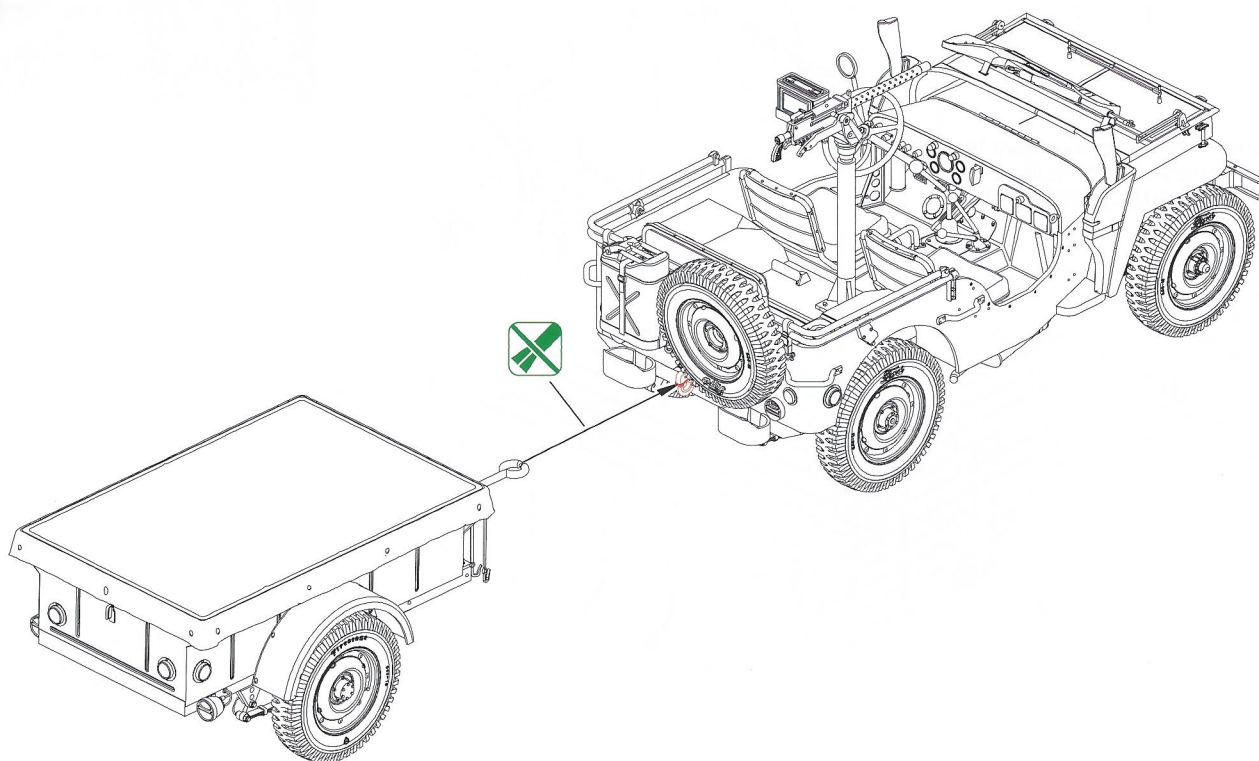
★ Caution: Make the wire from the plastic frame channel with the heat of fire.  
注意：制作电线用流道加热拉丝。



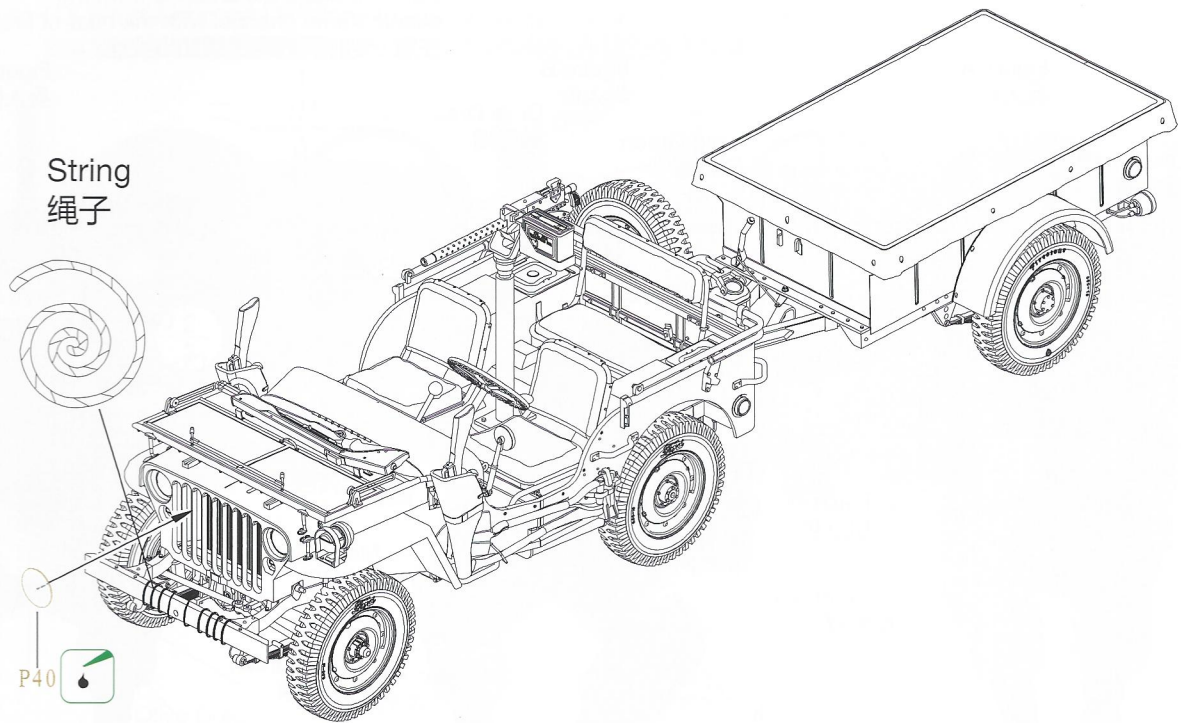
28



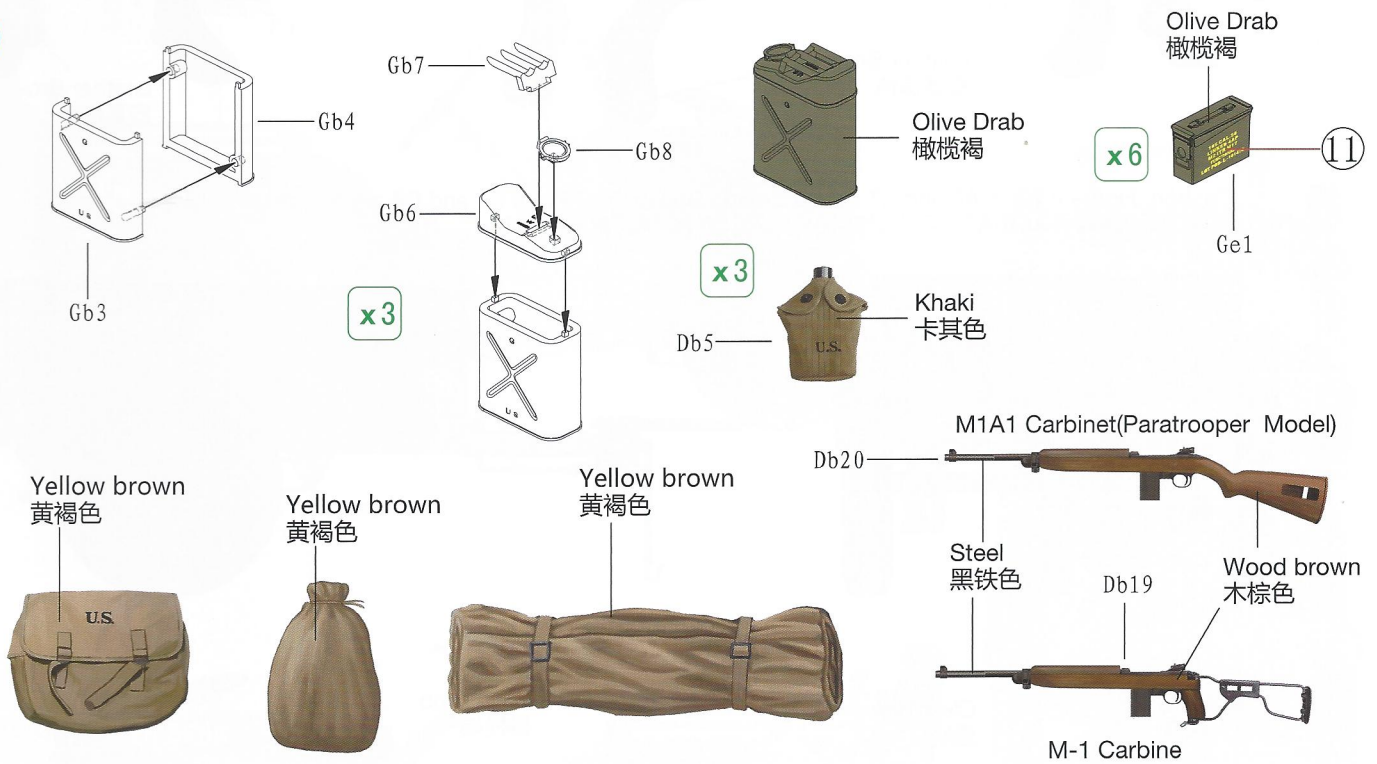
29



30



31



★ This is a precision molded plastic kit with exceptionally fine detail. It will require a little more care during assembly, but you feel the end result is well worth the effort.  
 本套件设计精密,零件繁多可能让你在制作过程中有所不便,但完成后会让你产生无穷之成功快感。

Happy modelling!  
 祝愿制作愉快!

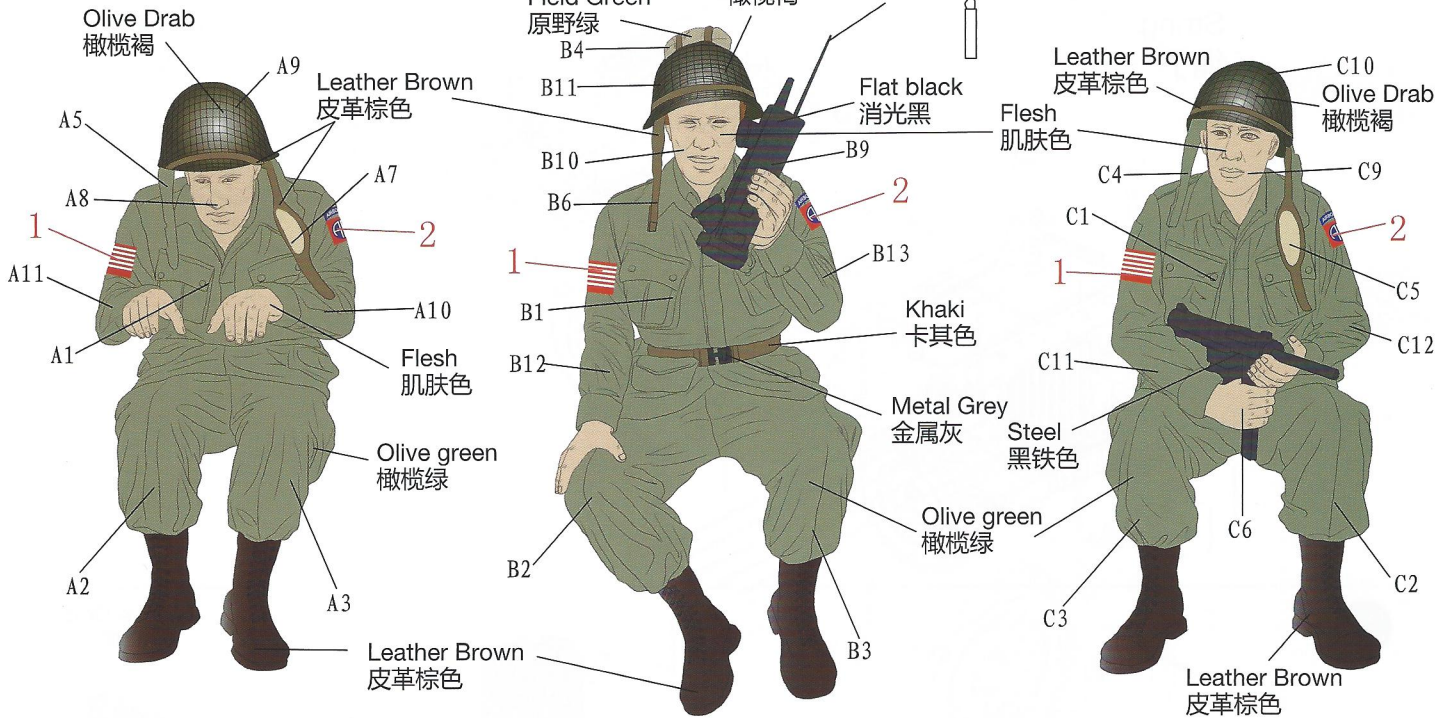
# DECAL & COLOUR GUIDE 水贴及涂色指示:

Caution: Make the antenna from the plastic frame channel with the heat of fire.  
 注意: 制作天线用流道加热拉丝。

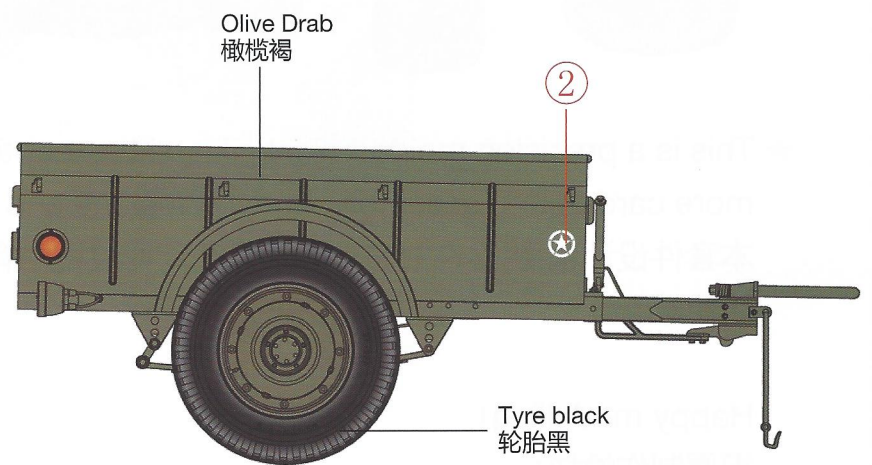
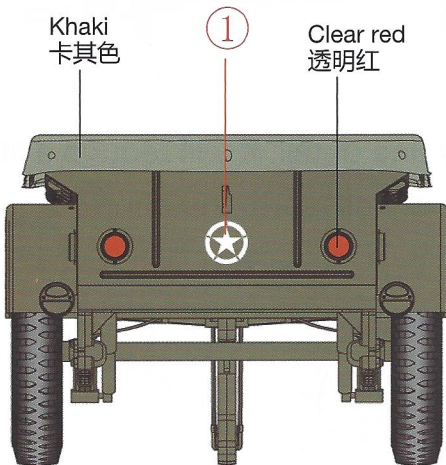
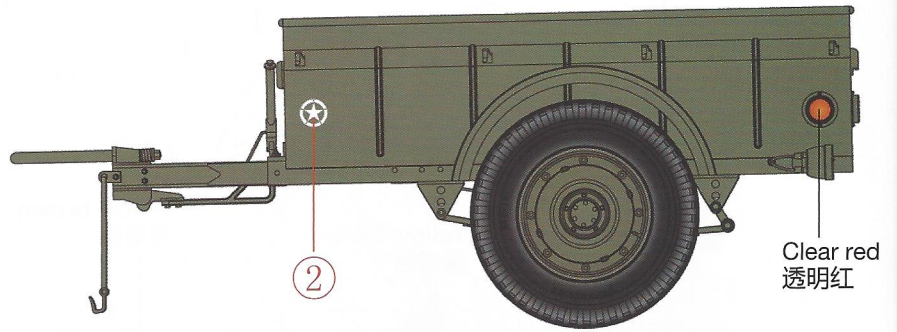
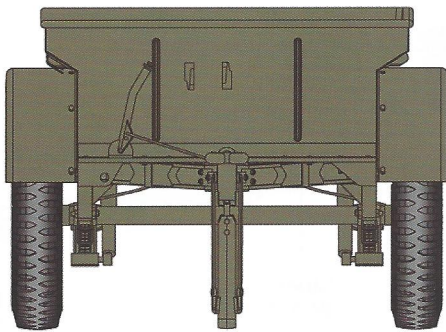
Figure A  
兵人A

Figure B  
兵人B

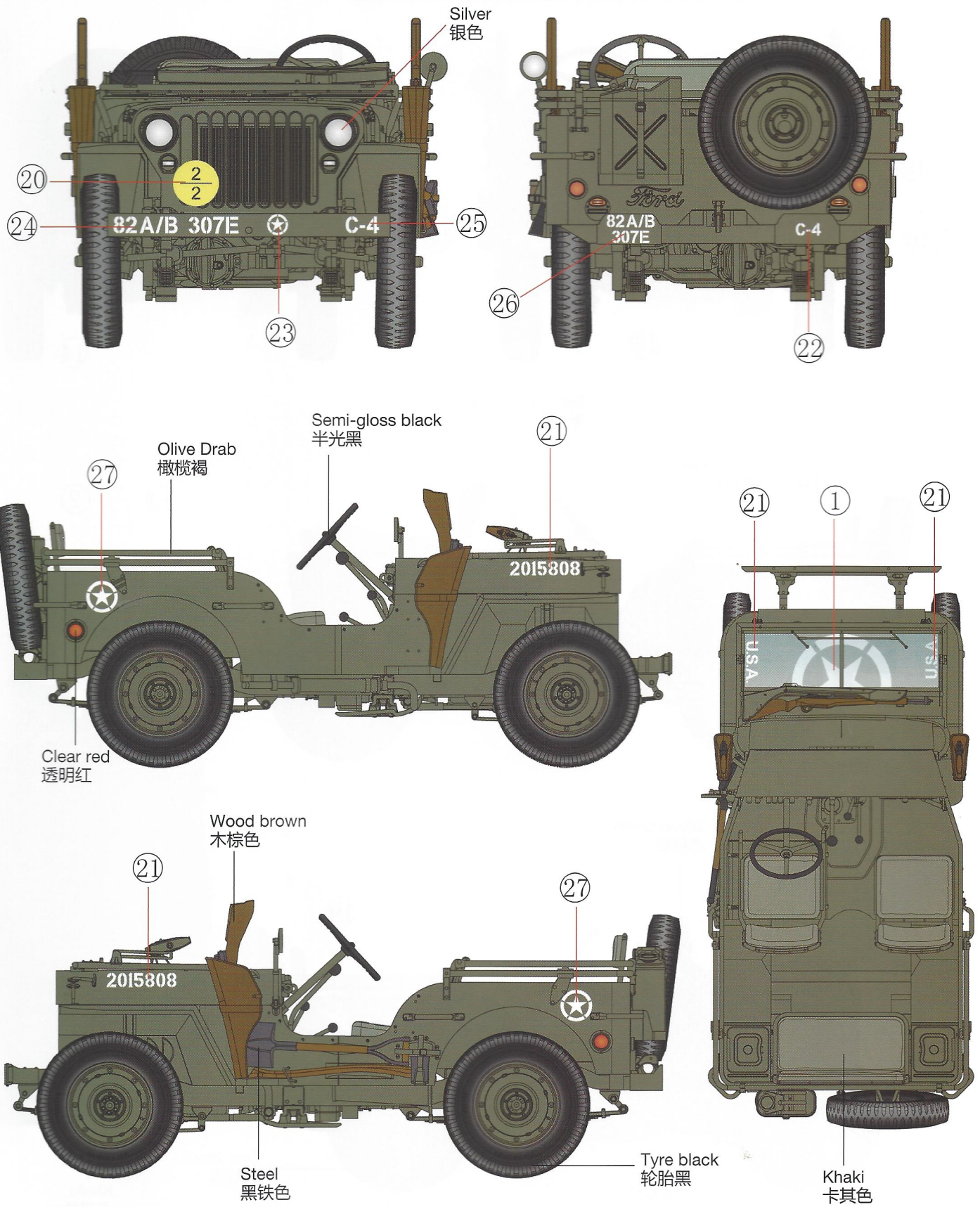
Figure C  
兵人C



★ Caution: Figure A parts A6 and A7, Figure B parts B5, Figure C parts C7 and C8 are for option only.  
 注意: 兵人A零件A6和A7, 兵人B零件B5, 兵人C零件C7和C8仅供选装。



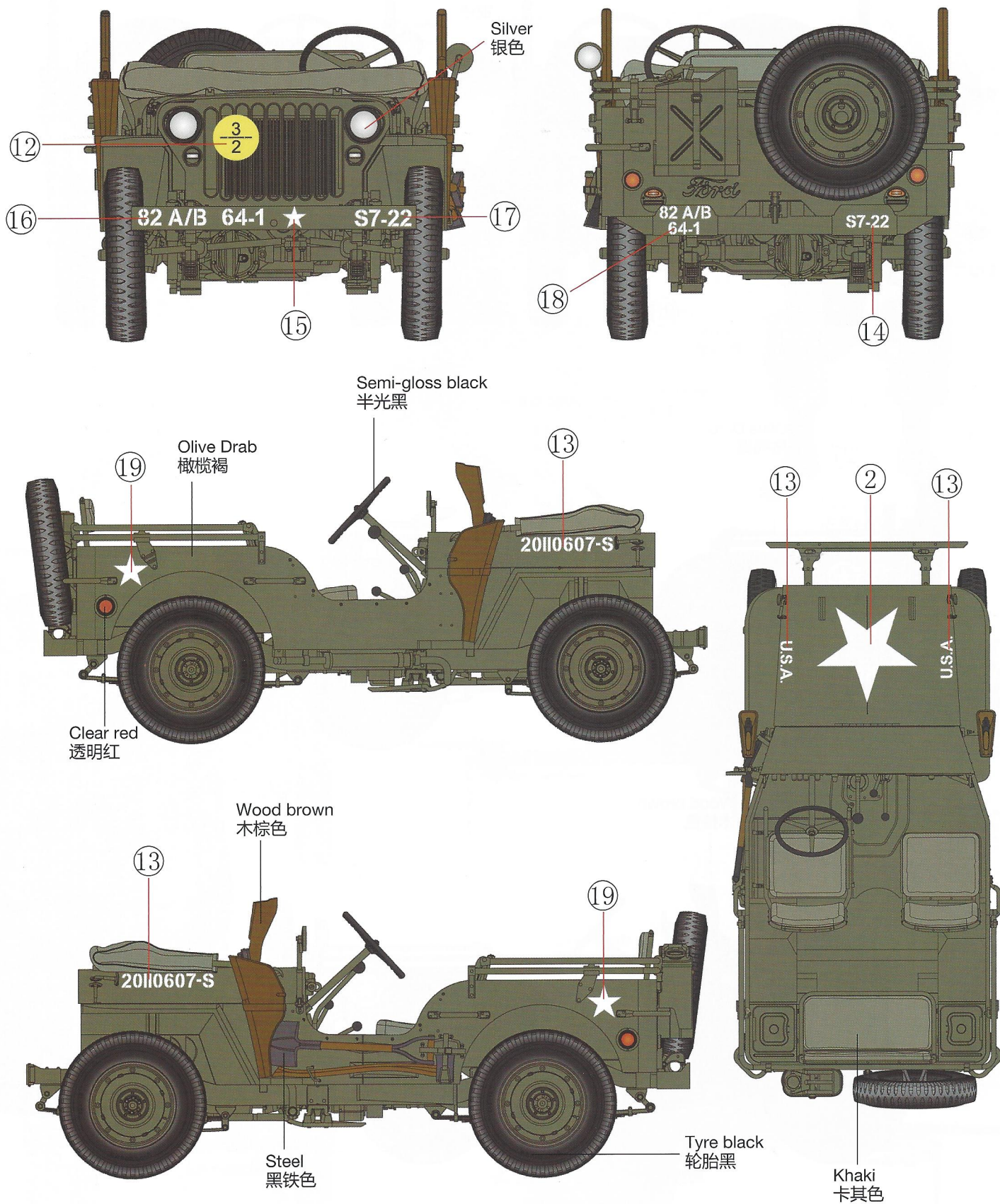
Option 1: US 82nd Airborne Division, Normandy area, France, 10 June 1944.  
 1944年6月10日在法国诺曼底地区作战之美军第82空降师属下车辆。



Camouflage Scheme: Overall Olive Drab  
 全车涂橄榄褐色

# DECAL & COLOUR GUIDE 水贴及涂色指示:

Option 2: US 82nd Airborne Division, Normandy area, France, 10 June 1944.  
 1944年6月10日在法国诺曼底地区作战之美军第82空降师属下车辆。



Camouflage Scheme: Overall Olive Drab  
 全车涂橄榄褐色