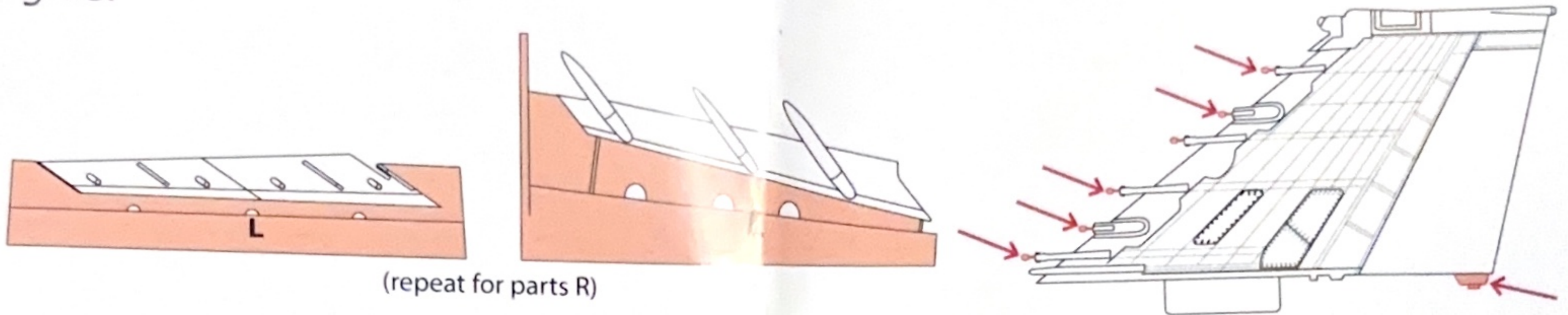


HYPERSONIC models

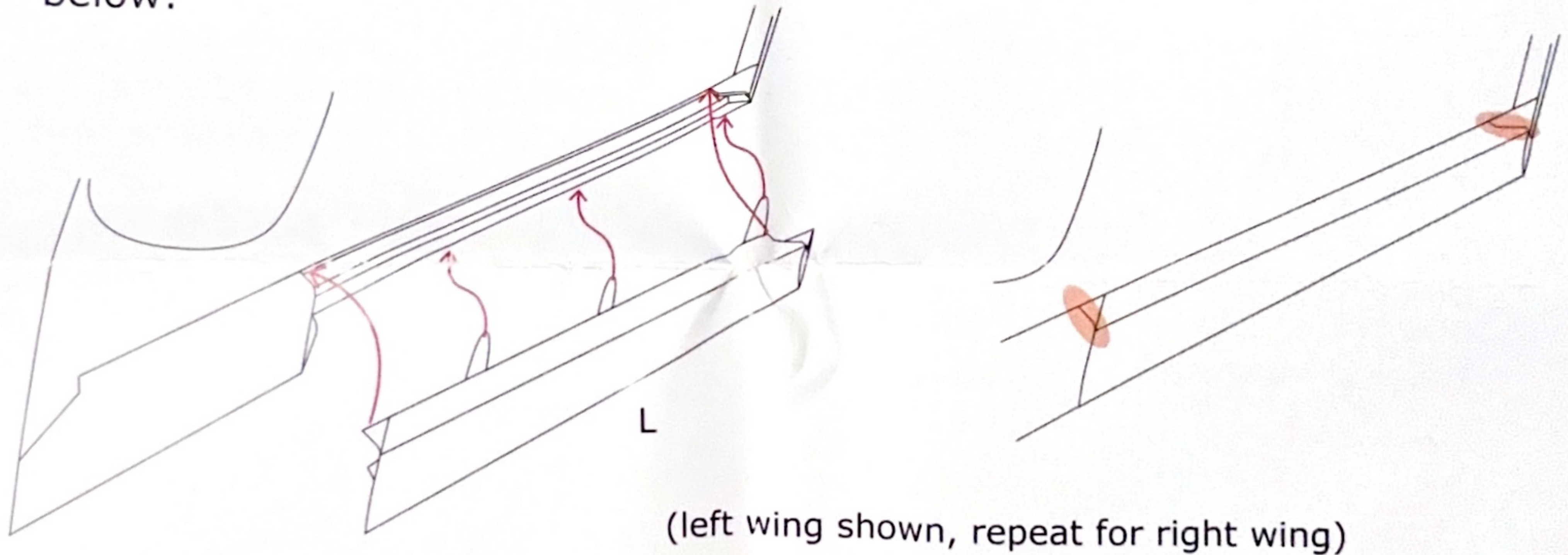
F-4E Phantom (late) Slat Wing Conversion Set

HMR 48039 (designed for ZM kits)

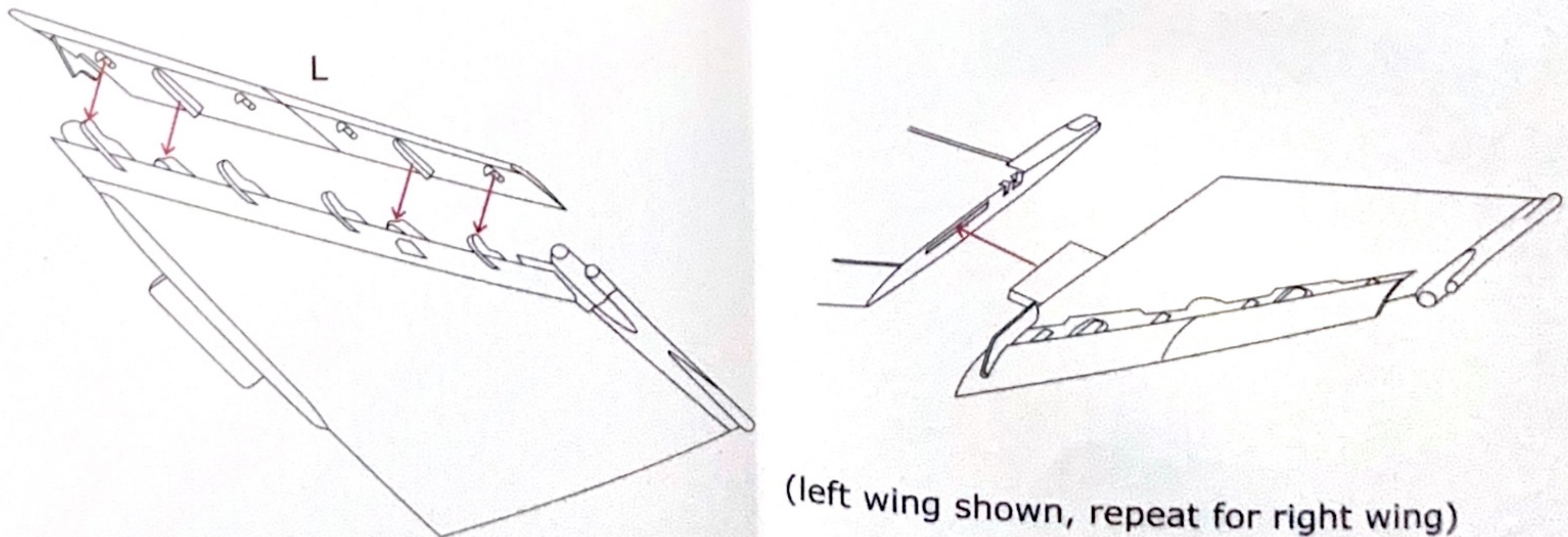
Wash contents in soapy water or wipe down with isopropyl alcohol (except clear part!). Remove the resin parts from the casting block by lightly scoring the parting line with a sharp (new) hobby knife blade. Glue with CA or epoxy glue.



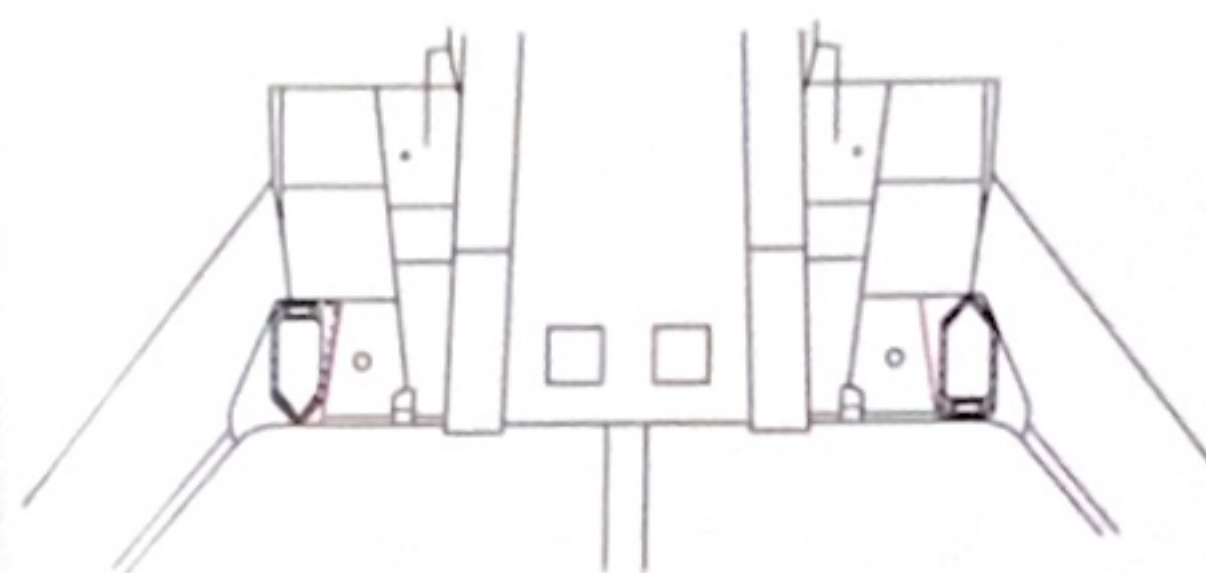
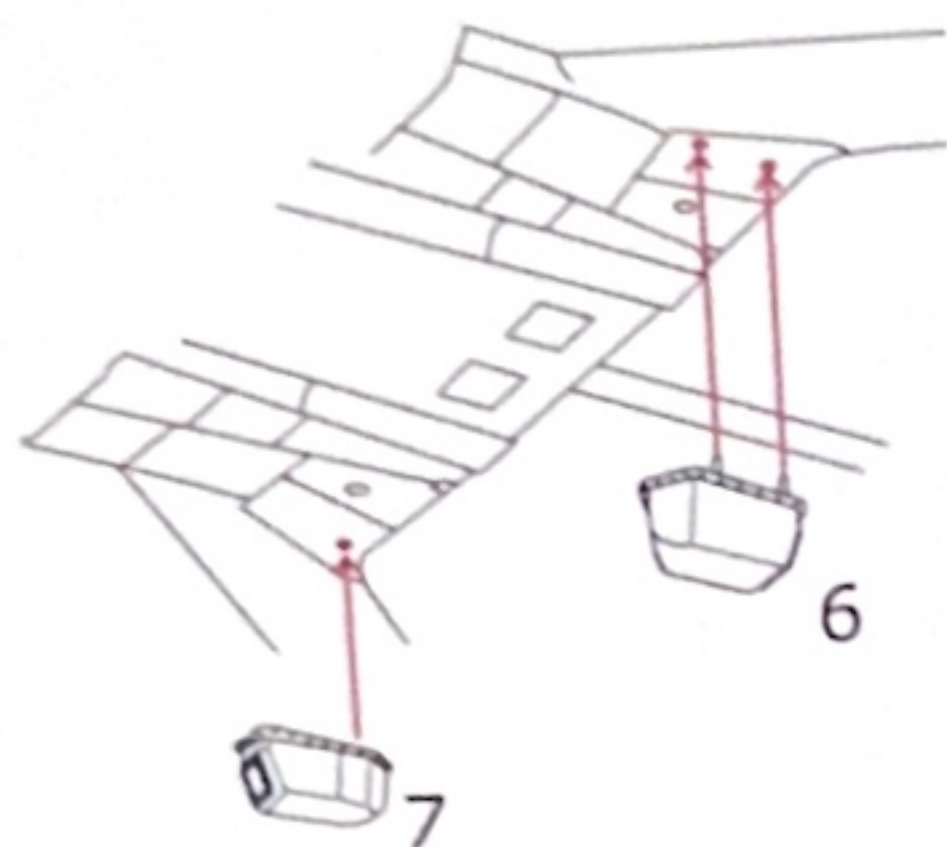
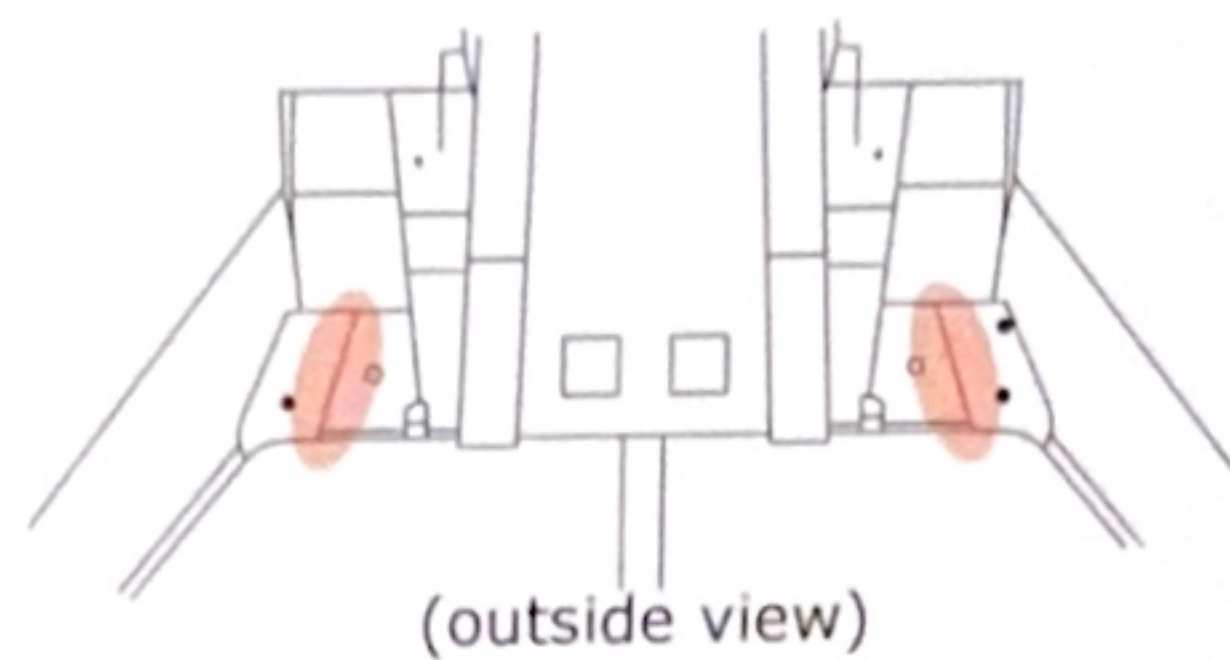
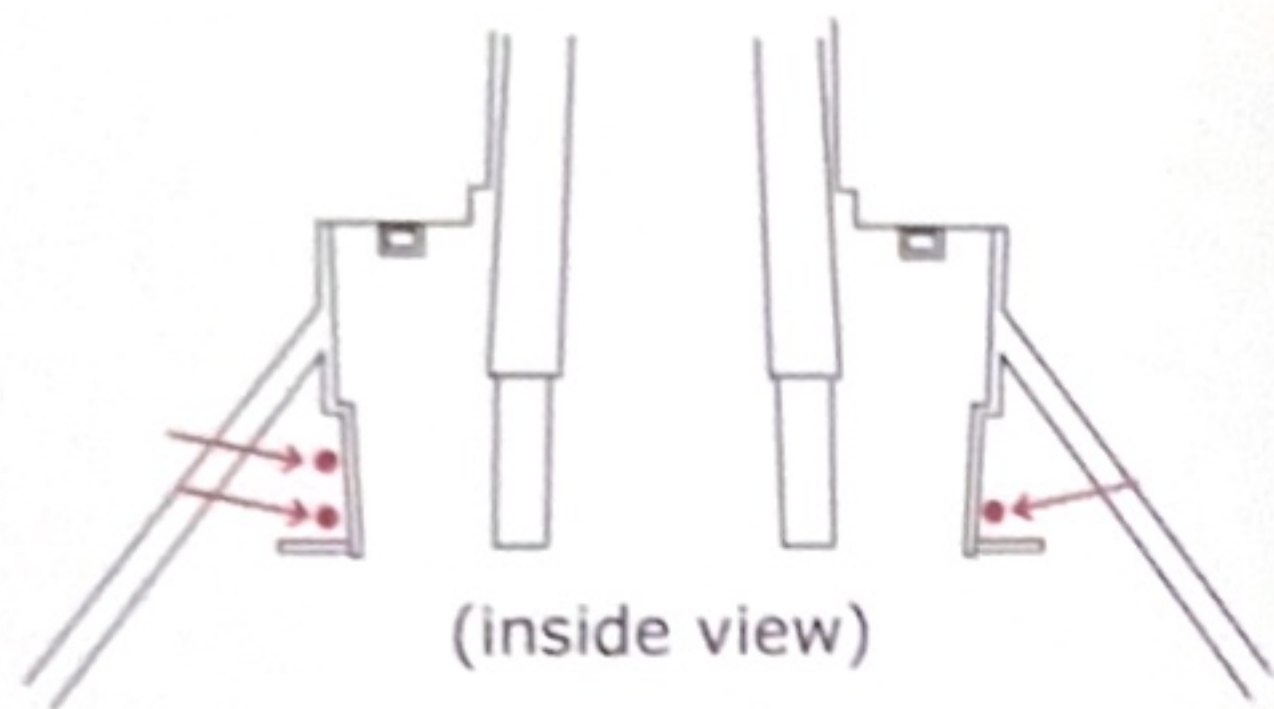
1. Insert main wing slat and hinge part into the joint wing halves (as per ZM instructions step 023). Eliminate the short panel lines on top as indicated below:



2. Add outer slats to outer wings in the retracted position. Install the outer wings as per ZM instructions step 023.

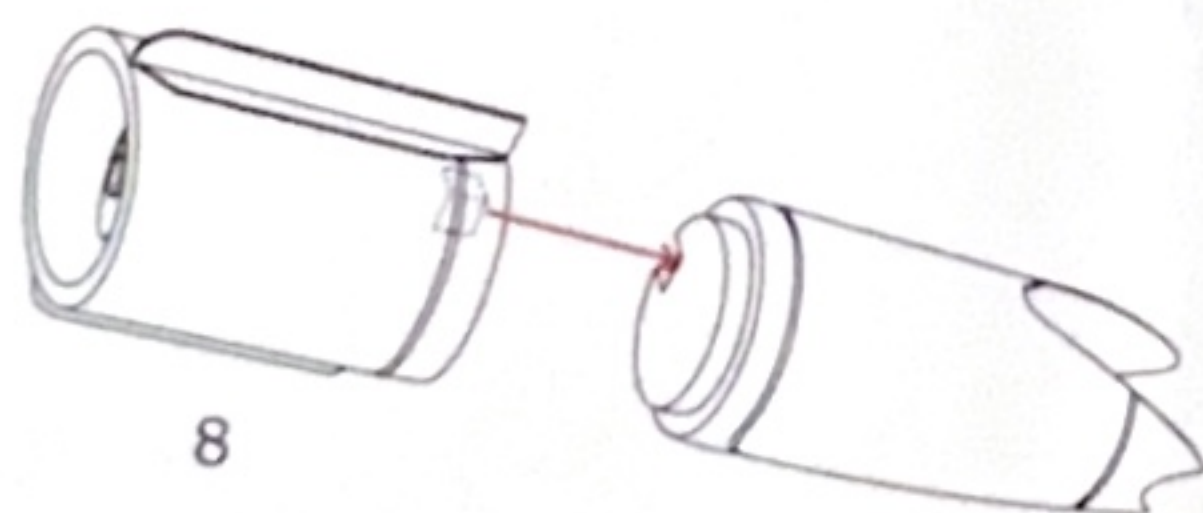


3. Strike cameras: Open three of the mounting holes (NOT all four!) in the lower wing part (G3). The two panel lines indicated aren't in the correct position. You may fill and correct them to match the strike camera outlines. Alternatively, use ZM kit parts M25/26 (but accuracy and detail aren't quite as good).



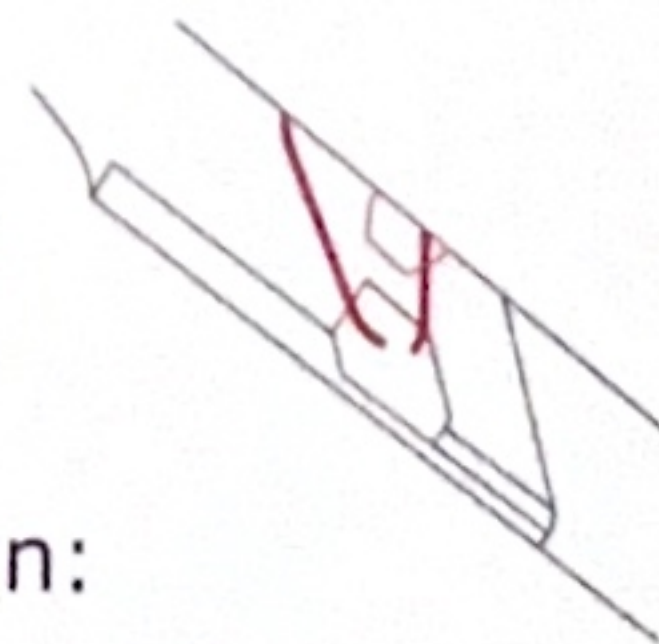
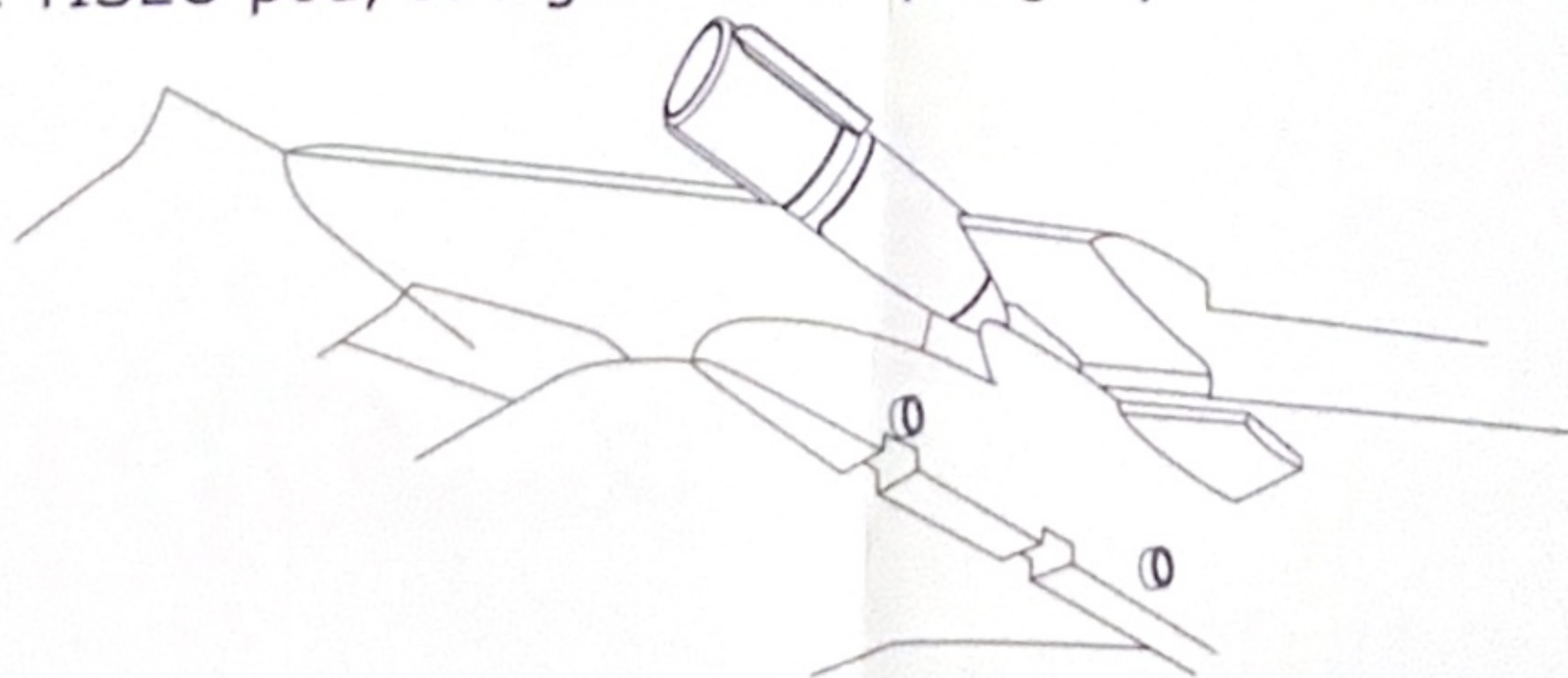
4. TISEO: Assemble front and rear resin parts 8 and 11, there is a key for orientation alignment. Paint the lens and mechanism inside. You may want to dip the clear outer glass in clear acrylic varnish to improve shine and prevent glue fogging.

Top Tip: don't remove the casting block until the glass is glued in place. The casting block is attached at the top edge of the glass. Trim off the block once the glass is glued in place. Apply the paint mask from the grey masking material provided.

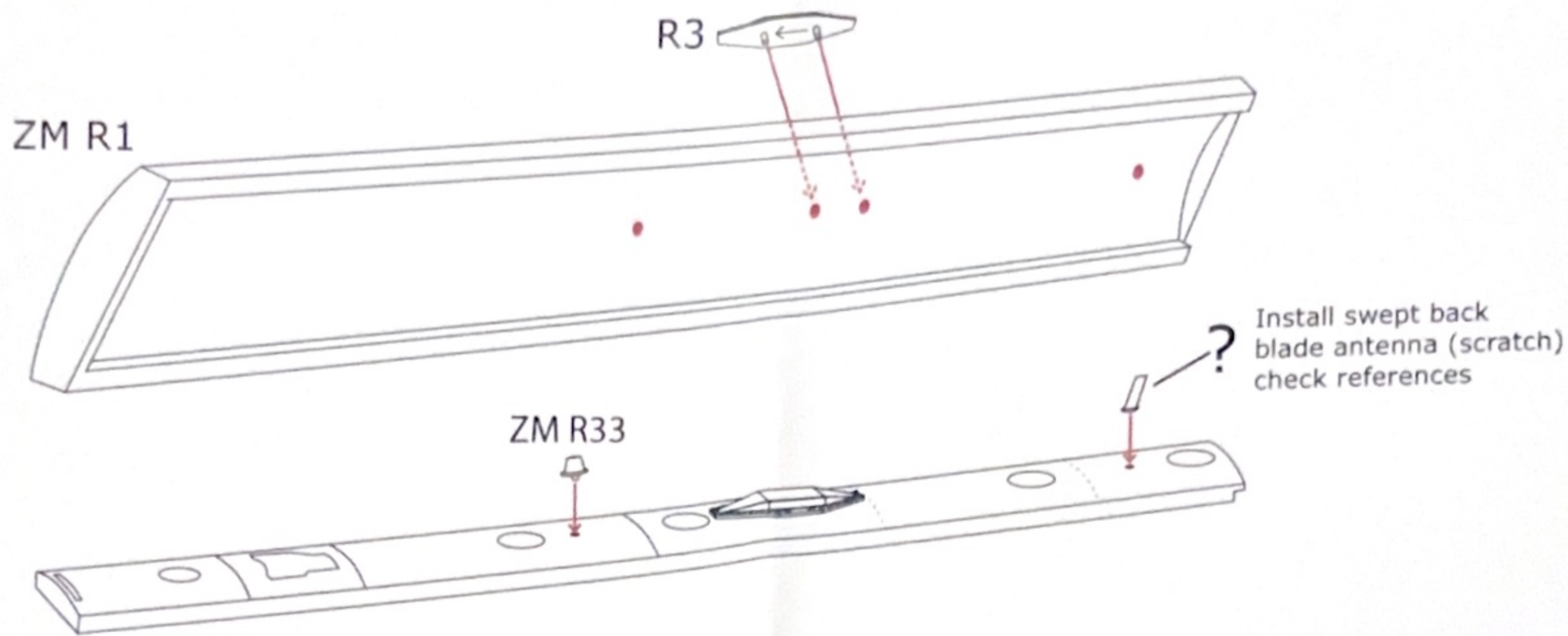


Sand off the raised detail at the leading edge of the bottom left wing and remove panel line:

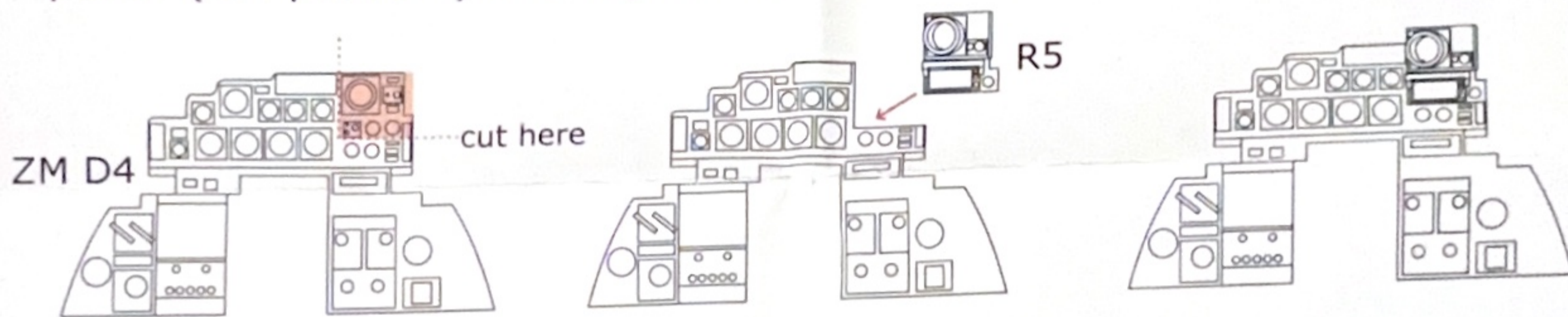
Temporarily fit the left inboard pylon to the wing to align the TISEO pod, straight and very slightly nose down:



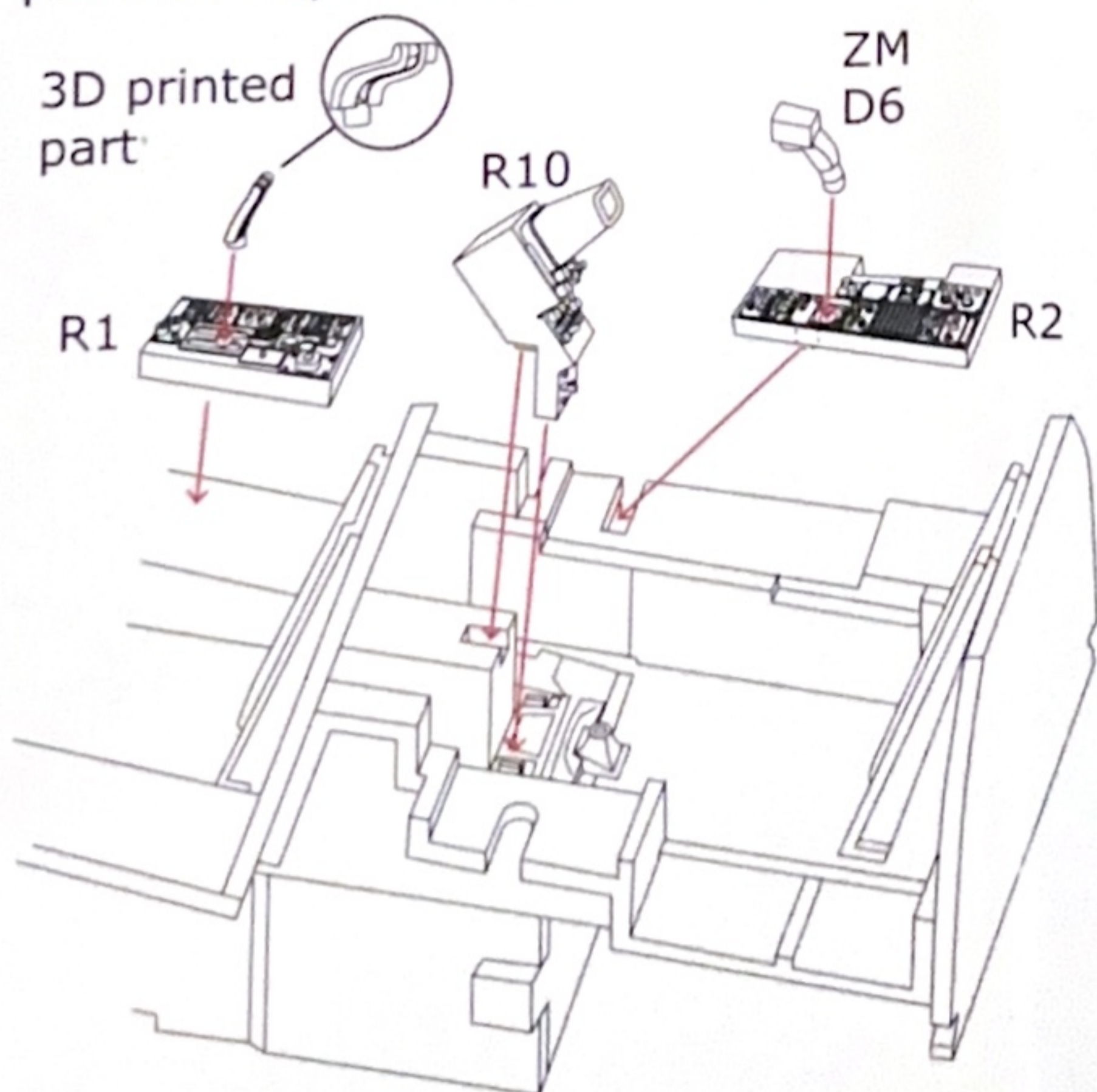
5. Gun muzzle: Use ZM kit parts M 33/34 for the longer "Midas" gun muzzle.
6. Chaff/Flare: Use ZM kit parts M 4,5,6,18,19,22,23 on the inboard pylons.
7. ARN-101 Antenna: Open mounting holes in ZM spine part R1. Fit resin part 3, the arrow on the mating face points forward.



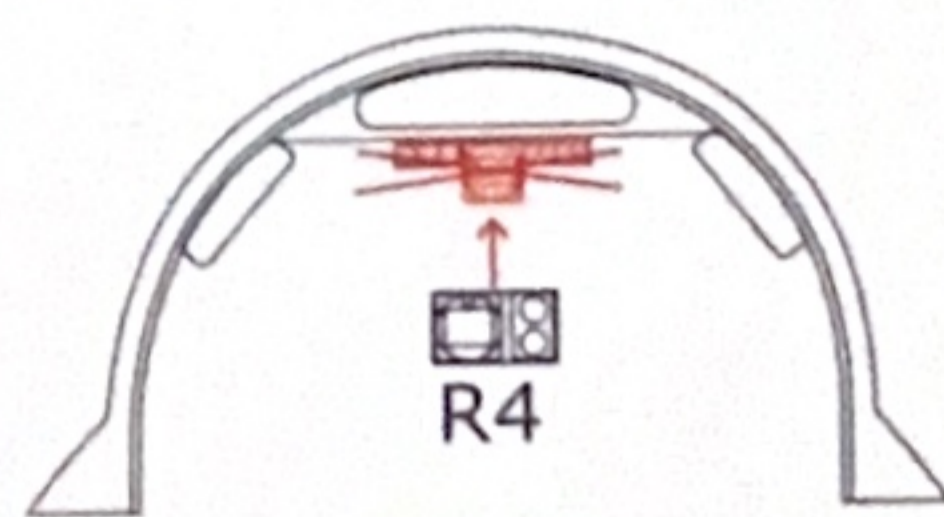
8. Cockpit: Changes to WSO station. Cut out part of the WSO instrument panel (ZM part D4) and replace it with resin part 5.



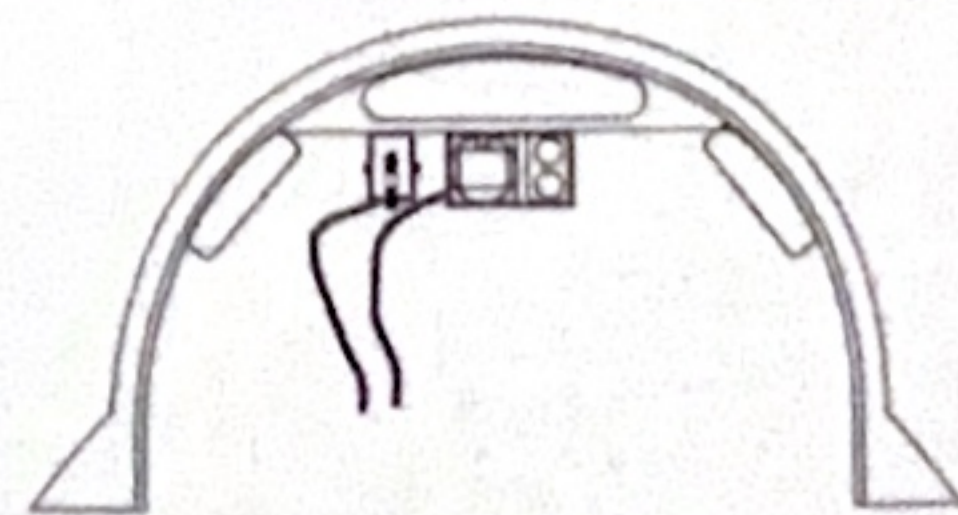
Replace the left and right hand consoles with resin parts 1 and 2. Use the 3D printed throttle lever on part 1 and the ZM kit joy stick (D6) on part 2. Replace radar scope D1 with resin part 10.



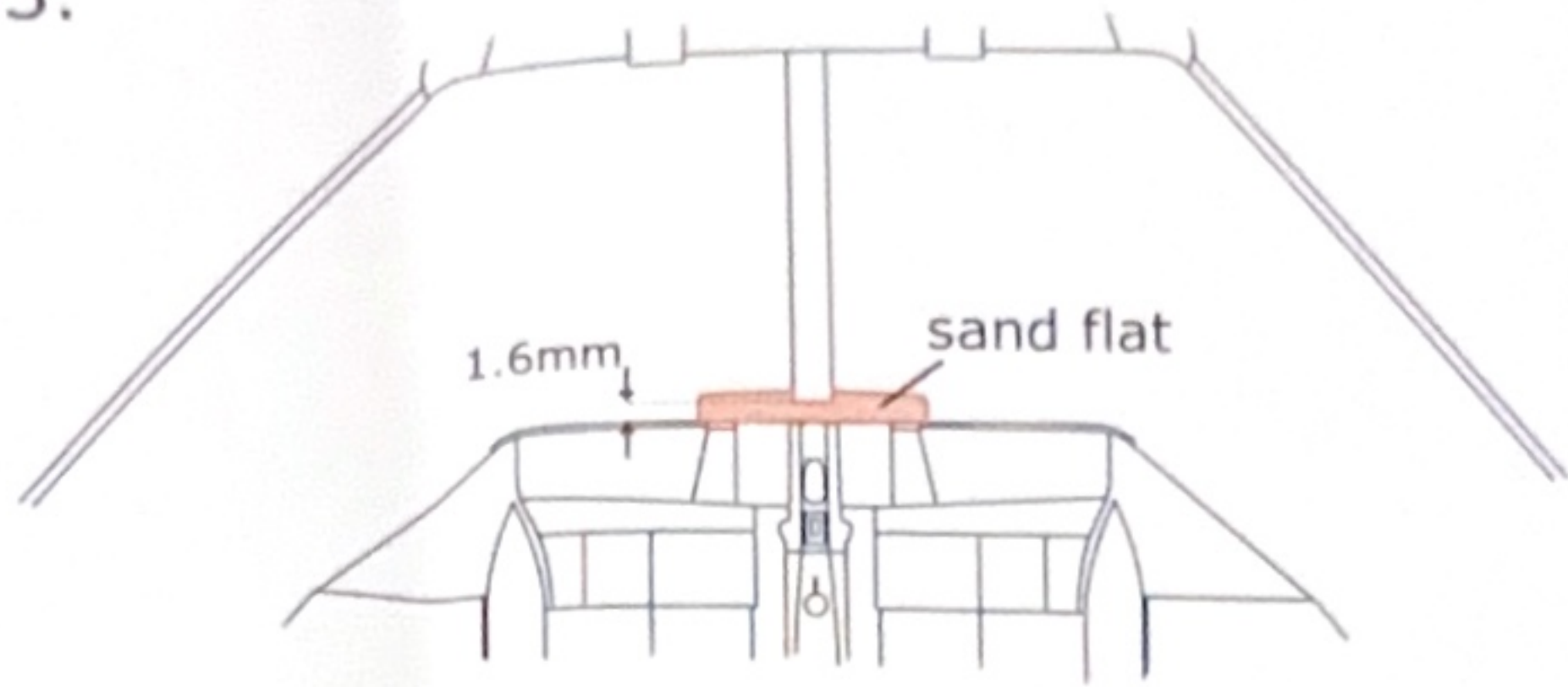
Under the middle canopy remove the detail from ZM part D5 and replace it with resin part 4.



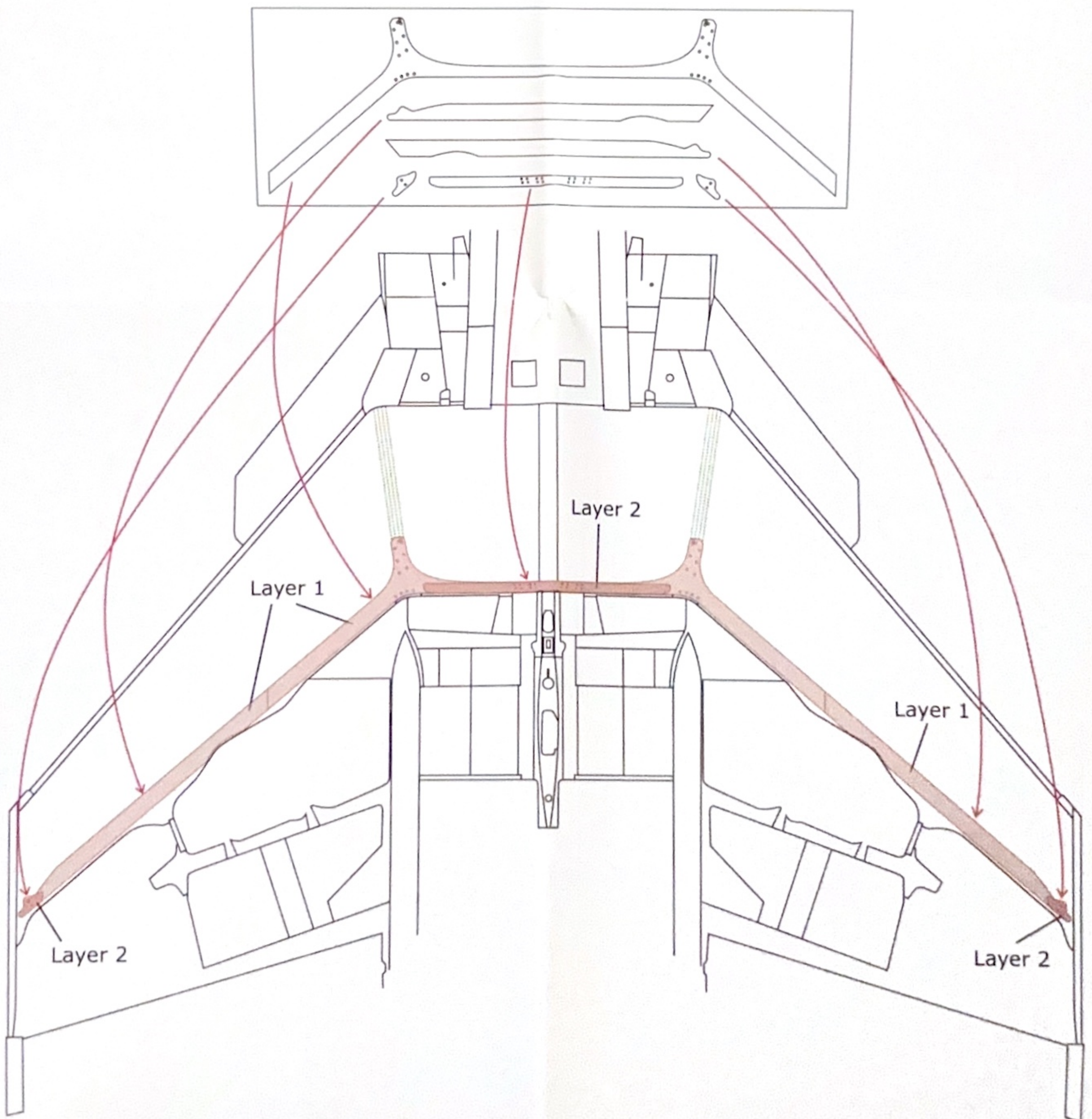
Alternatively, use parts from the Hypersonic Models canopy detail set HMR 48016-3.



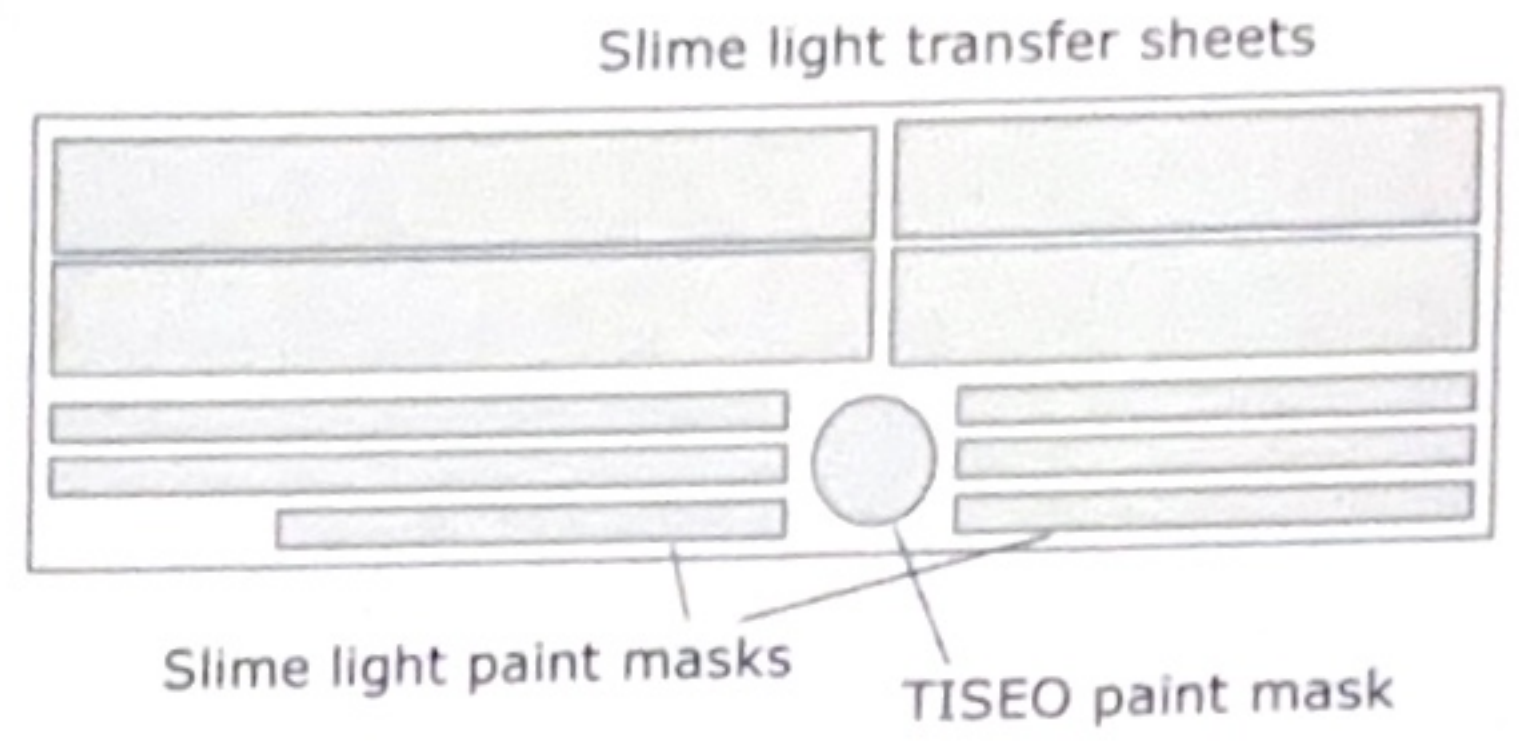
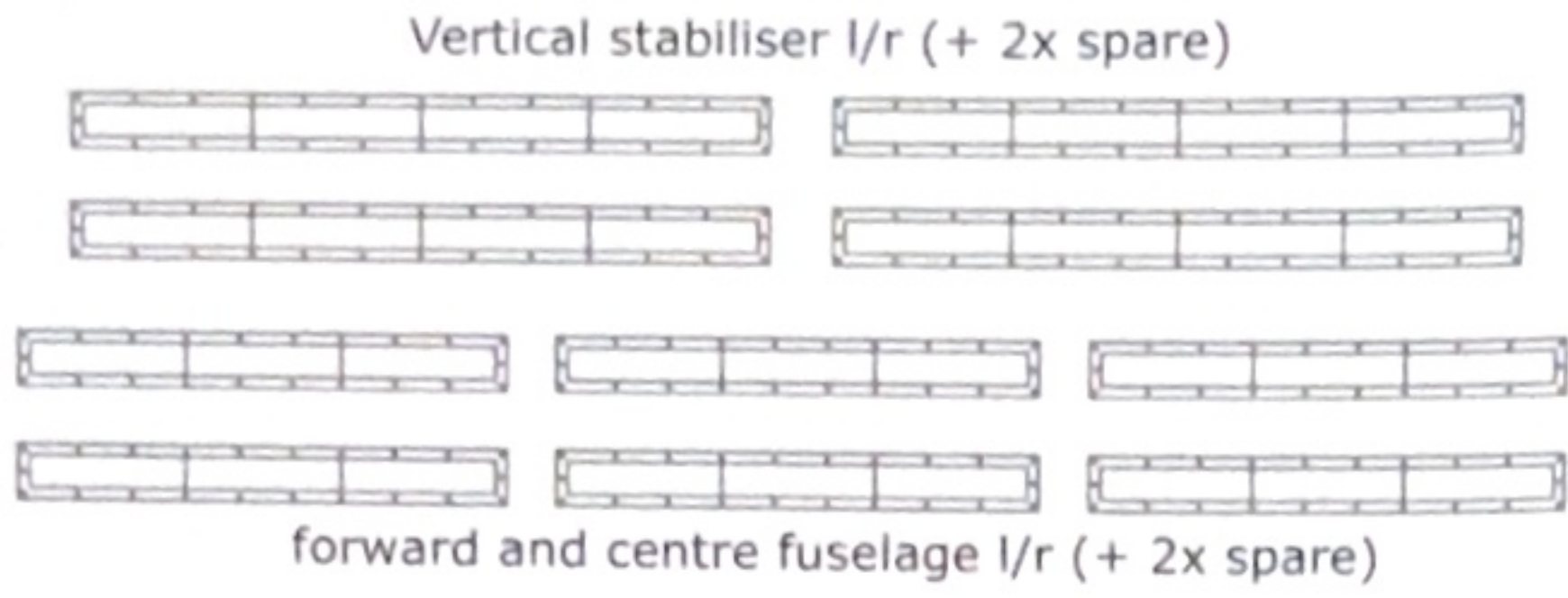
9. Belly reinforcement strap: shave/sand off part of the moulded on detail on the lower wing part ZM G3.



Weed out the rivets circles from the vinyl parts. On layer 1 start with the large centre piece, pay attention to the exact position in relation to the panel lines. Wetting the surface of the model helps with moving the vinyl parts into place. Burnish down when in position. Add the outer two long parts. Layer 2 consists of one centre and two small outer parts.



11. Formation "slime" lights.

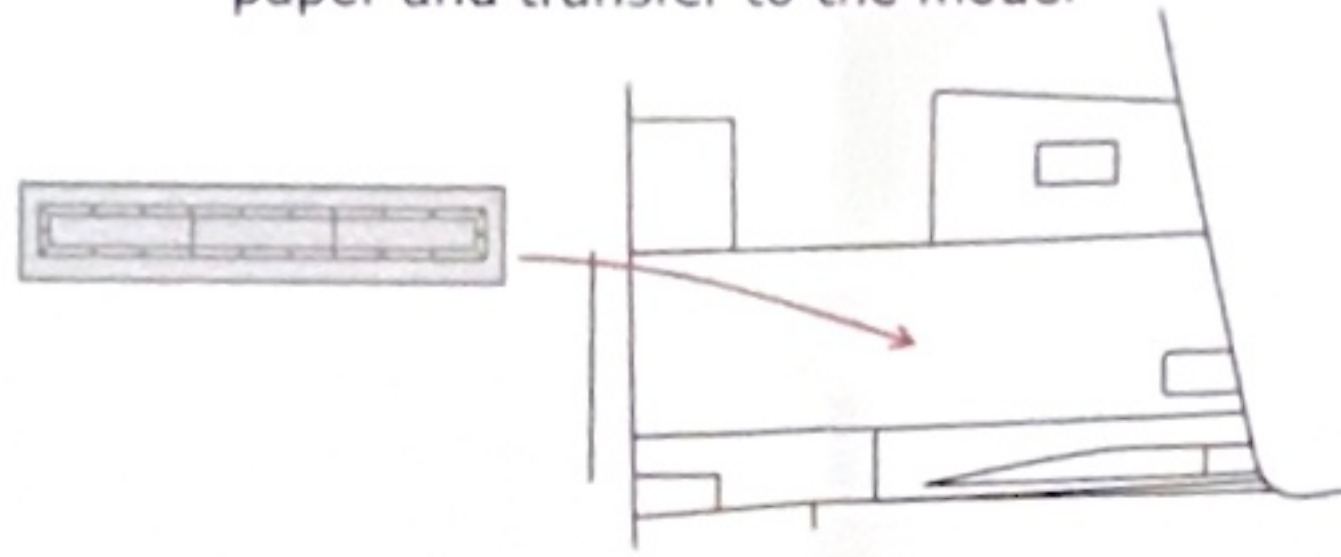


Application procedure:

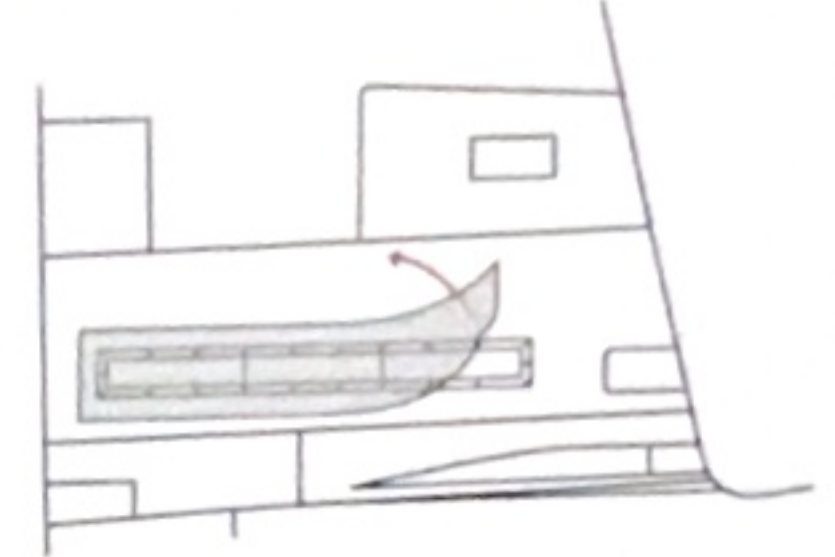
1) stick the transfer sheet over the slime light on the backing paper



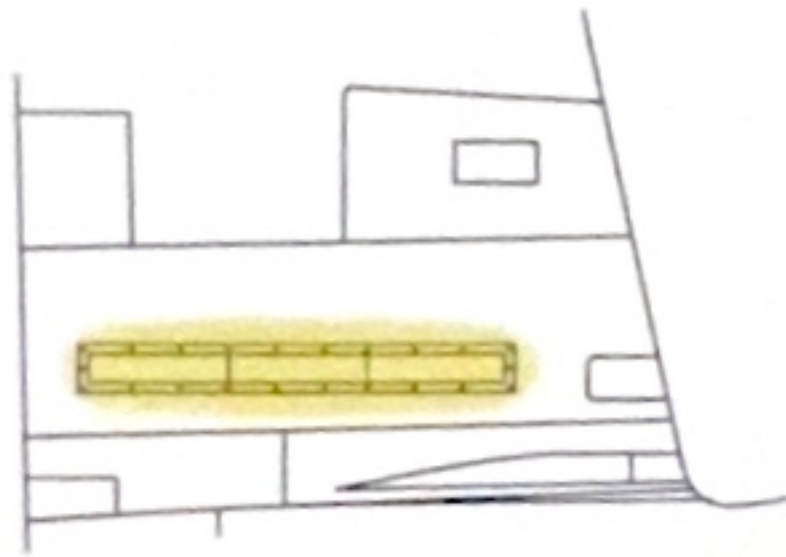
2) remove the whole set from the paper and transfer to the model



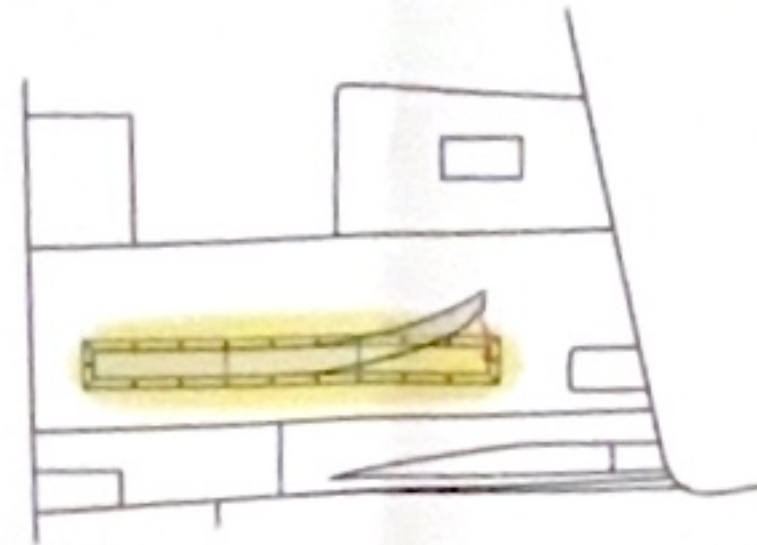
3) remove the transfer sheet after the slime light is in the correct position and burnish down



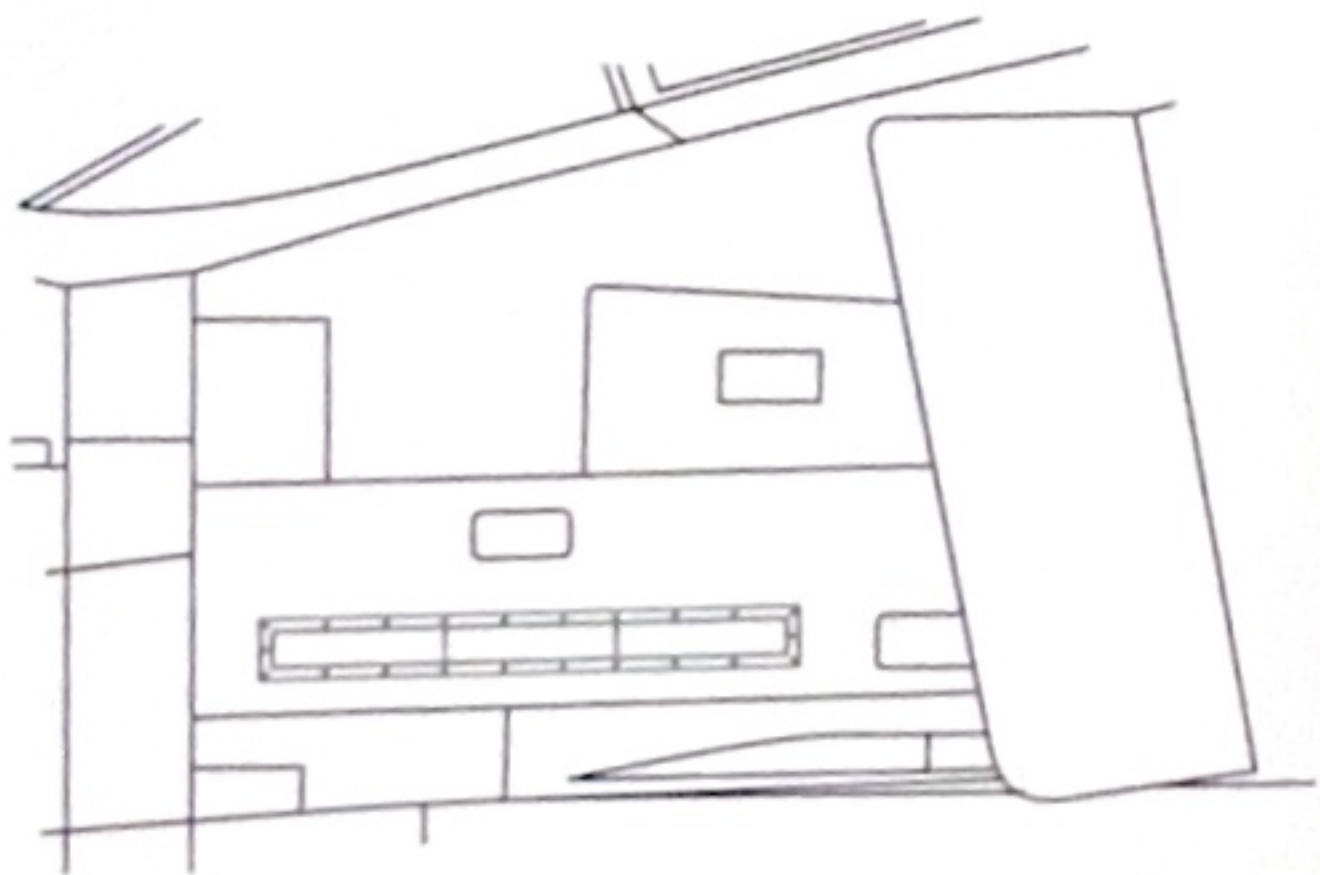
4) paint with yellow/beige colour



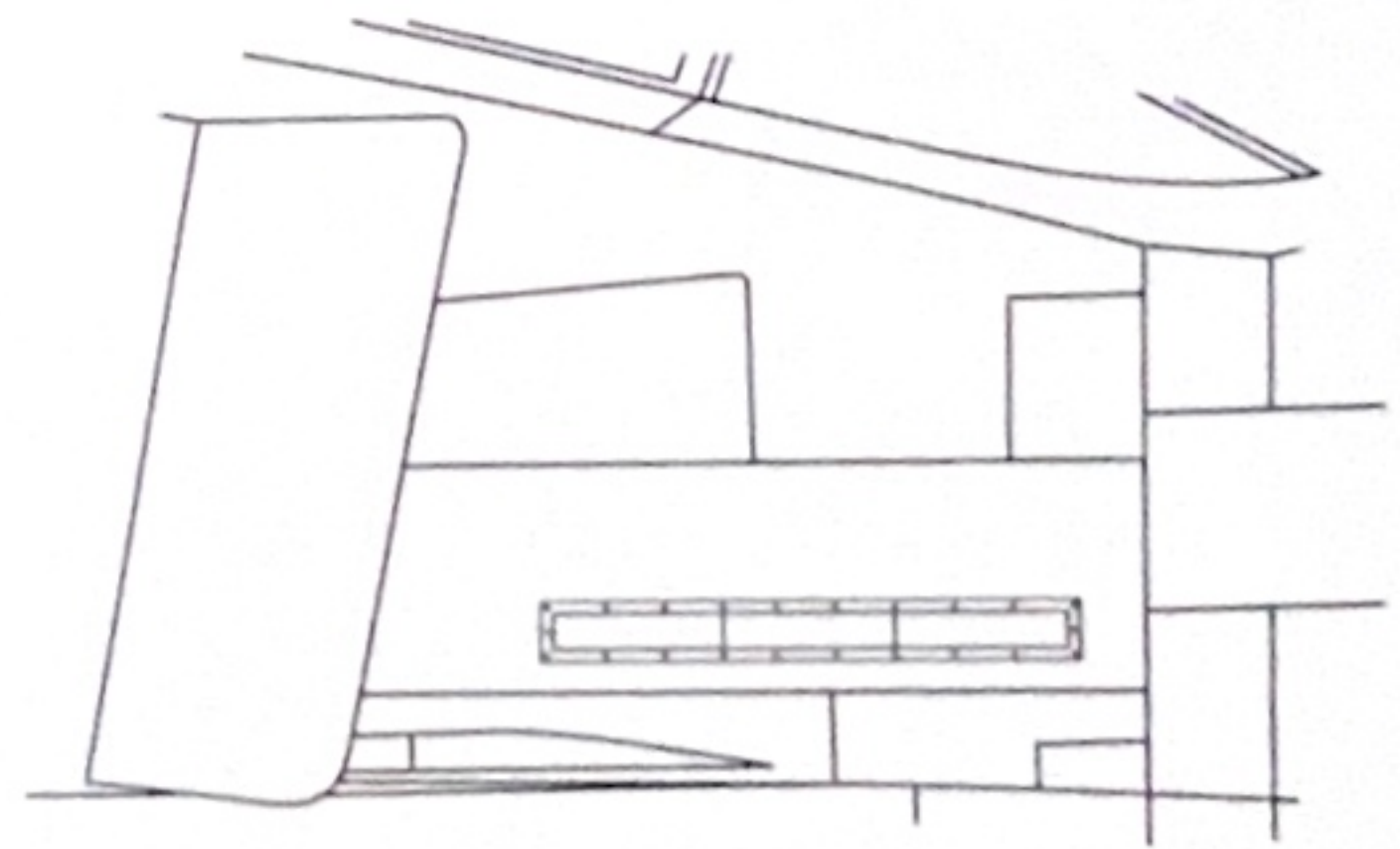
5) apply paint mask and paint the model



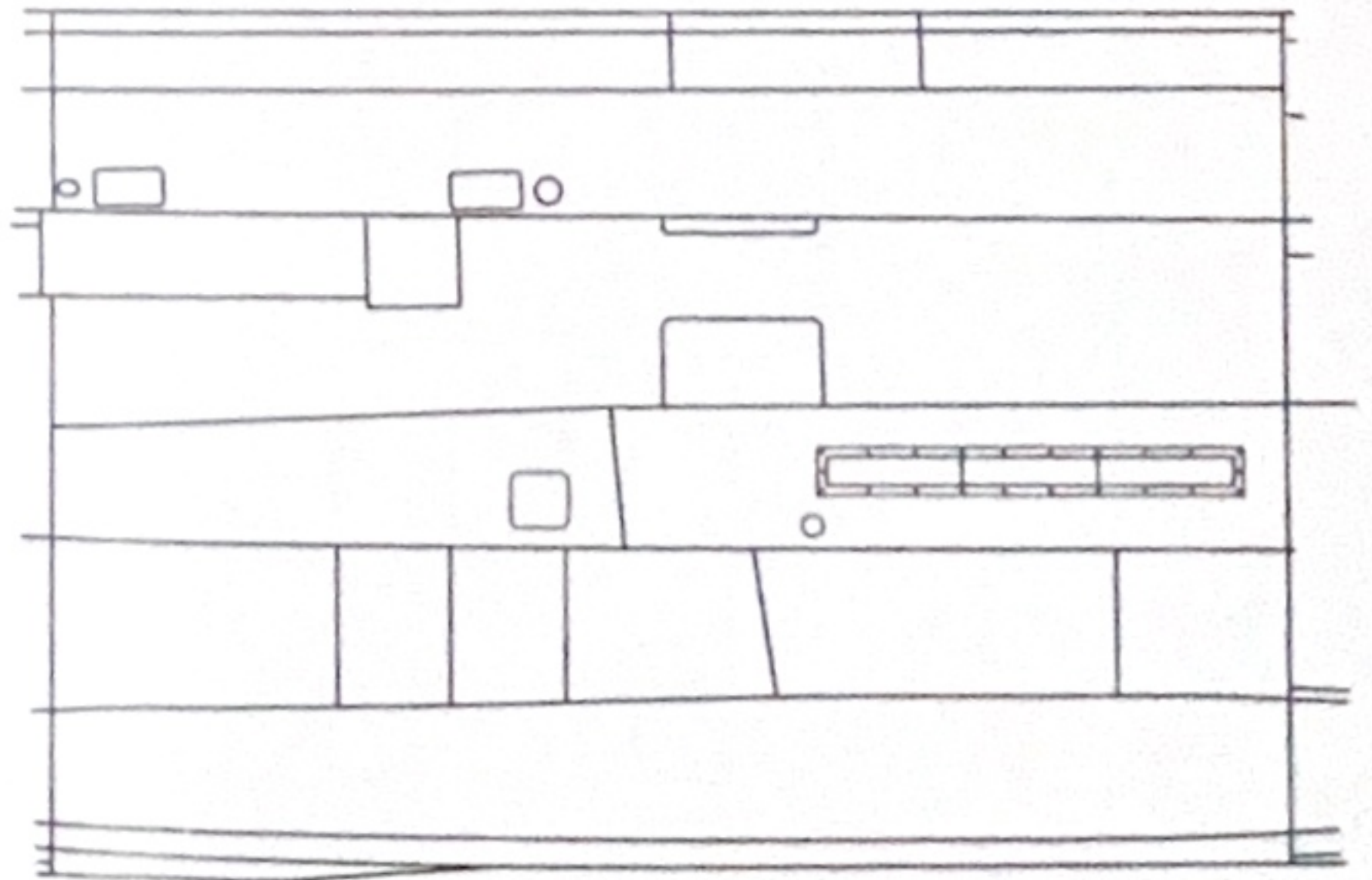
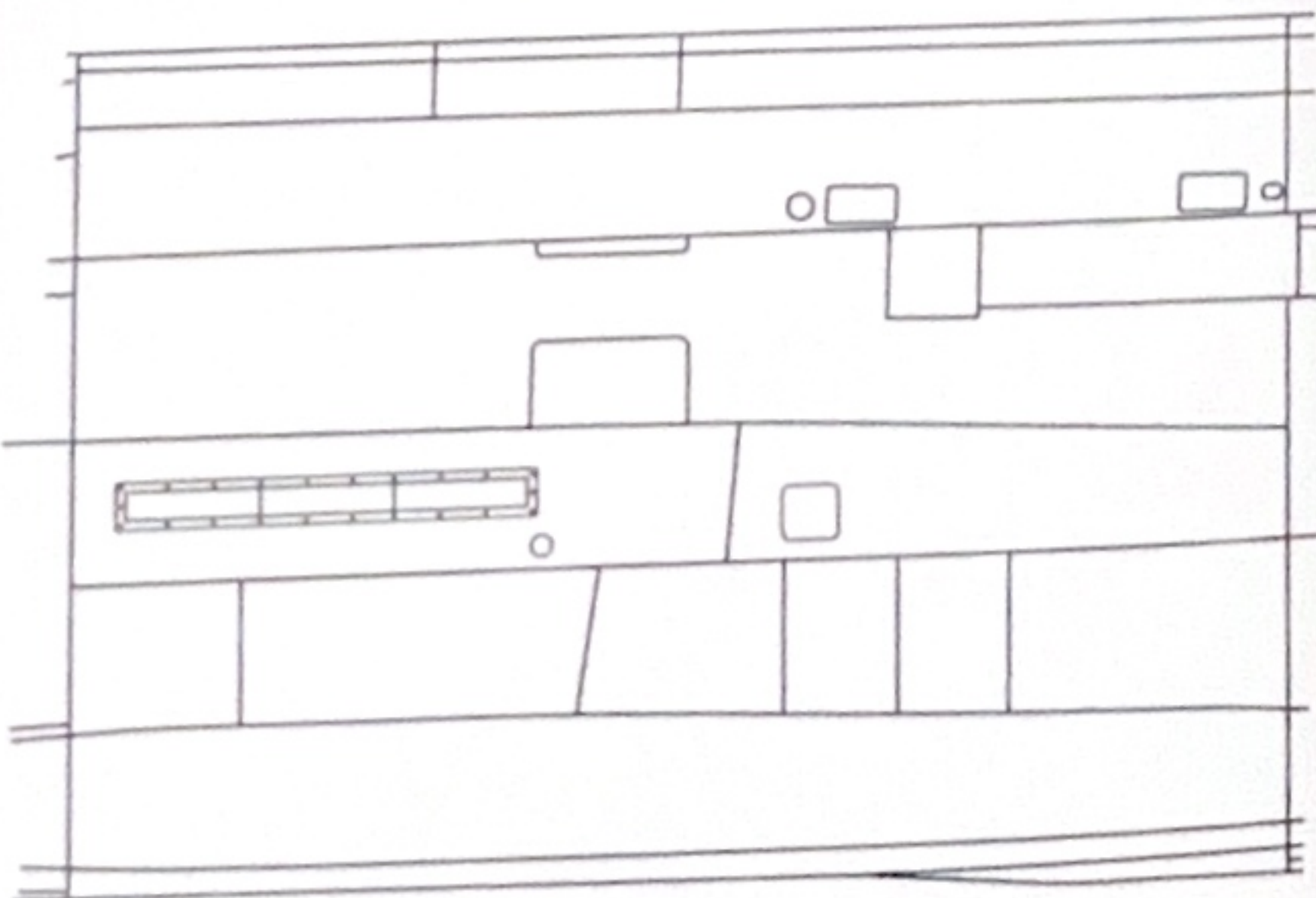
Placement (actual scale size):



left side/port



right side/starboard



Placement (actual scale size):

