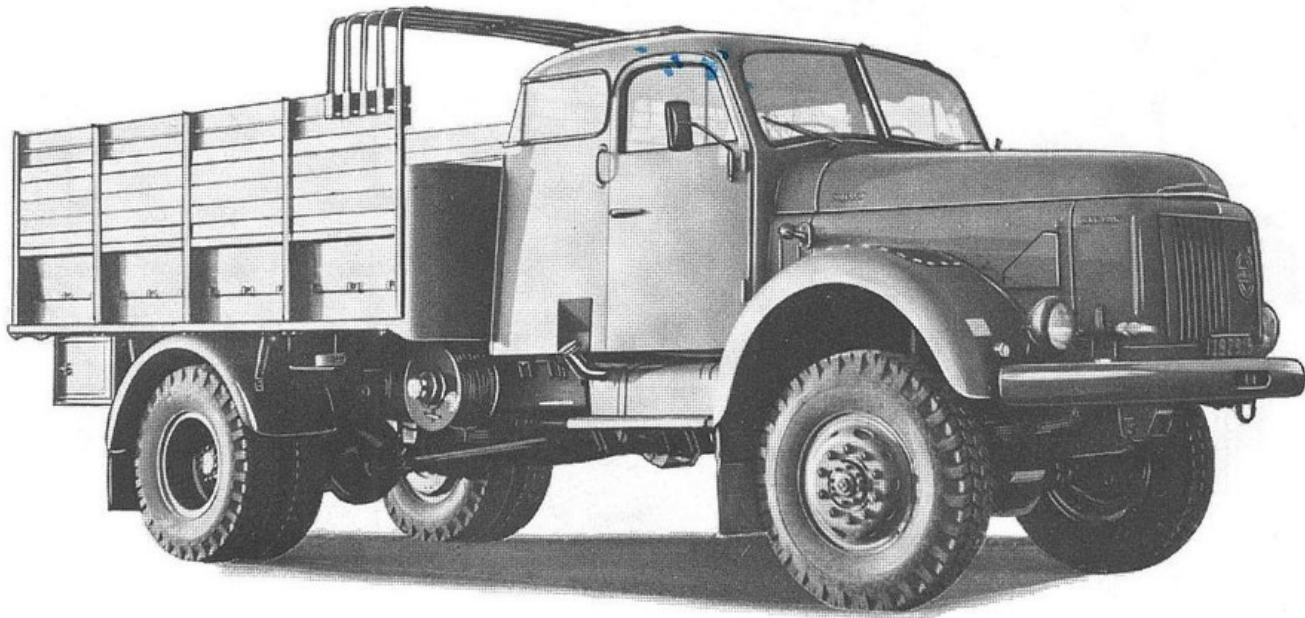


GECKO HEAVY INDUSTRIES

VOLVO LTGB 939E CREW CAB



GE72028
SCALE: 1/72



The Volvo Viking was one of the most recognizable and ubiquitous trucks in Swedish history. Volvo introduced the L385 Viking in 1953 and updated vehicles were produced until 1973. The truck had a payload capacity of up to 8 tons for the heaviest trailing axle versions. 1959 saw the introduction of the refined L485 Viking, including a stronger chassis. From 1961, the truck was available with a turbodiesel. When Volvo introduced its "System 8" in 1965 the truck's name was changed to N86. Beneath the Viking cab, Volvo conducted extensive changes including a new engine, a fully synchronized eight-speed gear box and a general updating of most components. The Swedish military used early civilian standard L3845s before moving on to the Ltgb 938 general service truck with a 410 cm wheelbase and a winch. This truck achieved notoriety by being designated "Helikopter" in the famous Swedish film "Repmånad" about inventive reservists on maneuvers.

The elongated 470 cm wheelbase version Radioterrängbil 936 Ra 620 version featured a van body for radio crews. The early trucks were all Swedish olive green while some were later painted in the splinter camo.

This was followed by the broadly similar L4854 based Ltgb 939AF with a 440 cm wheelbase and the updated D67C engine. The Ltgb 939E featured a double cab and fold down seats in the cargo area for crews of the Coastal Artillery (Küstartilleri) and usually towed the m/65 75 mm field gun (Fältpjäs) or the RB08 Cruise Missile. This version featured rear bench seats in the cargo area for Küstartilleri crews. Some trucks with a flatbed were able to carry the Stabyht command and control van body.

The final big production run on the N86 base with TD70A engines centered on the Ltgb 941 in 4 versions, all with 440 cm wheelbase but with a folding crane. The A version featured a HIAB Crane while the B, C and D versions had a FOCO Crane. Some of the last survivors were retrofitted with a box like cabin for Anti-Aircraft gun crews when they towed the m/65 75 mm Luftvärnskanon version. Besides the cranes, there were 2 different types of cargo beds and umpteen detail changes.

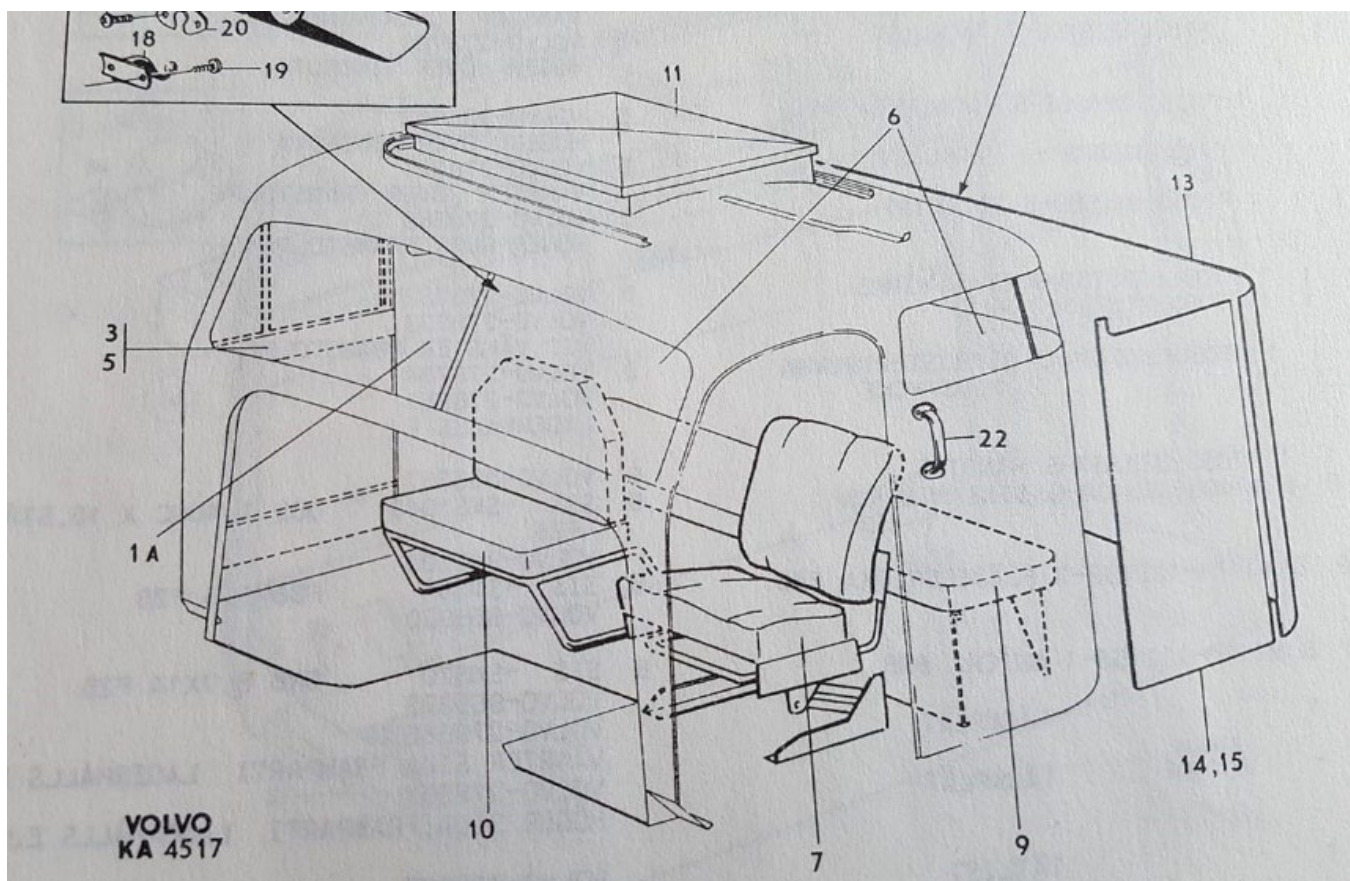
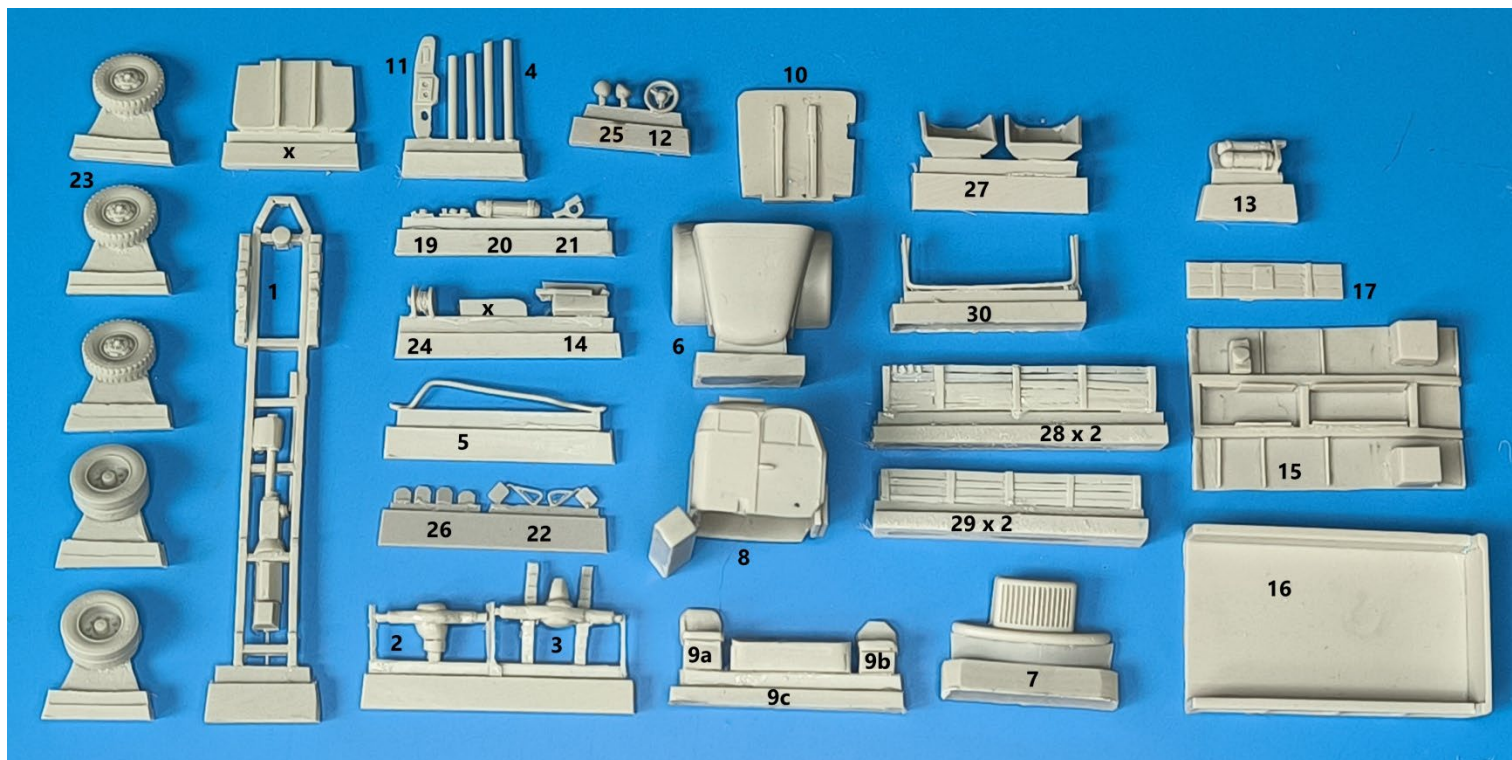
The Flygvapnet (Air Force) had a number of snow removal vehicles with an extra Scania engine to drive various snow blowers as well as a rescue vehicle/fire truck the Räddningsbil 918 on a 410 cm Wheelbase frame. These trucks were painted fire engine red. Besides the above versions, there were also some field kitchens some 3 Axle cargo Vikings, and some fuel tank trucks on an NB88 frame, amongst very many others.

Model Instructions

Efforts were made to offer modelers 7 recognizably different versions of the Viking in 3 Chassis lengths, using as many standard components as possible. Assemble axles **(2, 3)**, exhaust **(5)**, hydraulic tank **(20)**, tow Hook **(21)** and drive shafts **(4)** to chassis frame **(1)**. Cement hood **(6)** and grill **(7)** to front of frame **(1)**. The interior of cab **(8)** paint was greyish green with dark grey vinyl seats and grey door and cab paneling. Cement seats **(9a, 9b and 9c)** on platform **(10)** as per diagram below so that cab can easily slide over them, attach pre-painted instrument panel **(11)** and steering wheel **(12)** to interior of cab, taking care that windows do not mist over. Mask windows and cement running boards **(13, 14)** to either side of cab, the smaller on the right. Glue rear frame **(15)** to chassis and truck bed **(16)** on top of it. Attach tailgate **(17)** open or closed, as desired. Cement cargo area side screens **(28)** with bench seats **(29)** either folded up or down to truck bed. For durability purposes, you may want to replace roof frames **(30)** with paperclips bent and cut to same shape. Attach roof frames either at front of truck bed near cab, or evenly spaced over full length. Attachment point for winch **(24)** is marked on right side of chassis. Prime and paint as Swedish olive green or splinter camo as desired. Attach pre-painted details like wheels **(23)**, wing mirrors **(22)**, headlights **(25)**, rear lights **(19)** and tactical signs **(26)**, if applicable. It's best to coordinate attachment of wheels and rear mudguards **(27)**. Refer to website

<https://www.geckoheavyindustriesmodels.de/gec72028-volvo-lastterrangbil-ltgb-939e/> for colour references photos using access code on printed instructions in kit.

Kit Components



Seat placement as per Försvaret / Volvo Manual

General Instructions

We try to make our parts as easy to fit as possible but these are kits for relatively experienced modelers. First, we urge you to clean up the parts with soap and water, to remove possible remains of release agents. If parts are warped, dip in very hot water and gently bend back to right shape. The usual plastic cement does not work on resins and metals. Cyano acrylate glue or epoxy do the job. Resin Parts are preferably sanded wet, to avoid inhaling the dust. The use of Cyano acrylate and epoxies is also to be done under well ventilated conditions. Read the instructions of your adhesive products.

NOT RECOMMENDED TO CHILDREN UNDER THE AGE OF 14.