

ALASKAN HAULER



A1339-200

KENWORTH CONVENTIONAL

1/25 SCALE
SUPER-DETAILED!

IMPORTANT! READ THESE POINTS BEFORE YOU BEGIN

- 1 "TEST FIT" all parts before cementing. Trim excess plastic from parts before joining.
- 2 Cement all parts unless otherwise indicated by the instructions.
- 3 Use paint and cement made for styrene plastic only.
- 4 Paint all sub-assemblies before attaching chrome parts.
- 5 Follow all of the numbers on the instruction sheet beginning with number one.

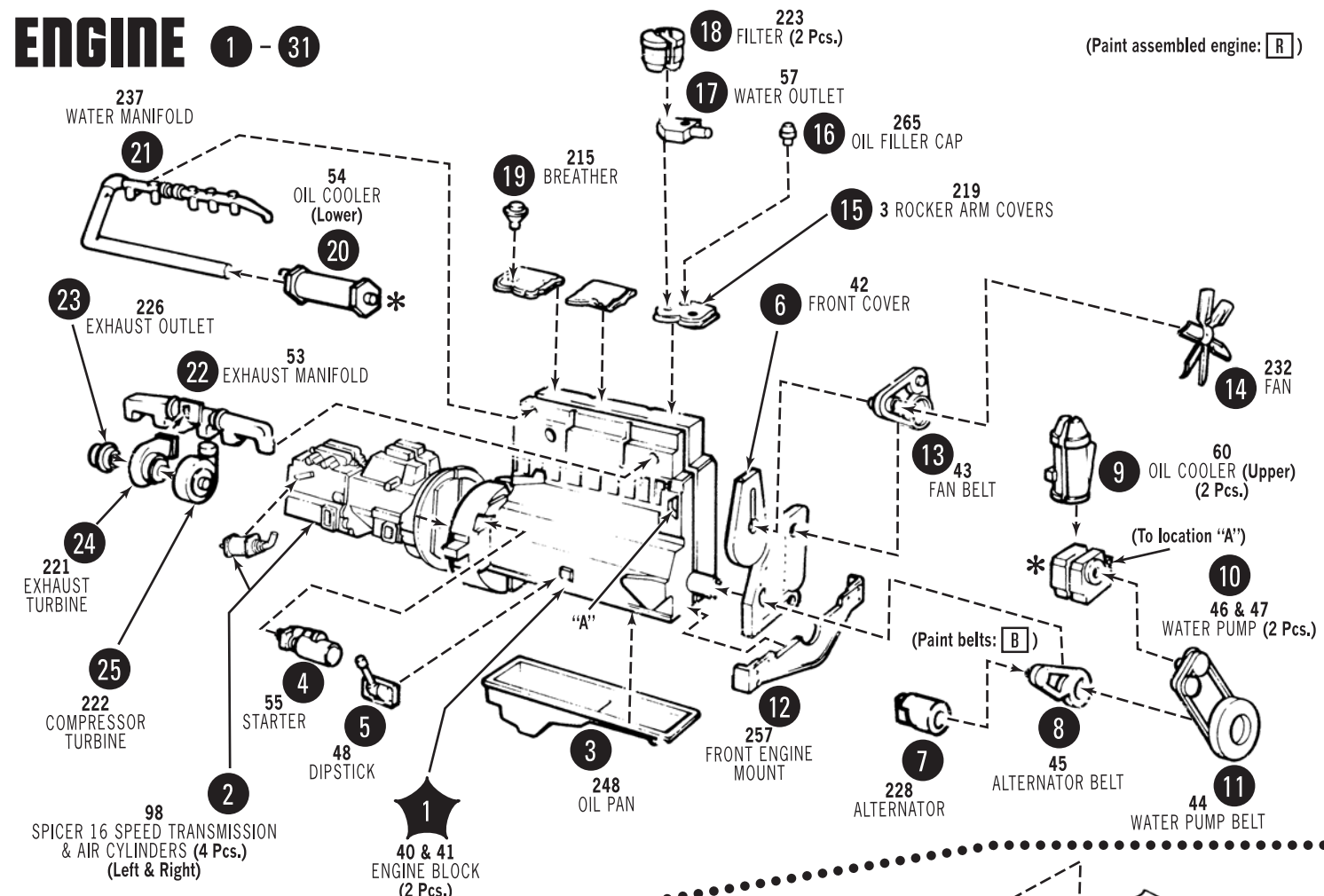
SPECIAL NOTE: To easily identify part locations on the sprues, the numbers used on this instruction sheet match the numbers shown in the parts drawing on the bottom of the box.

PAINT COLORS

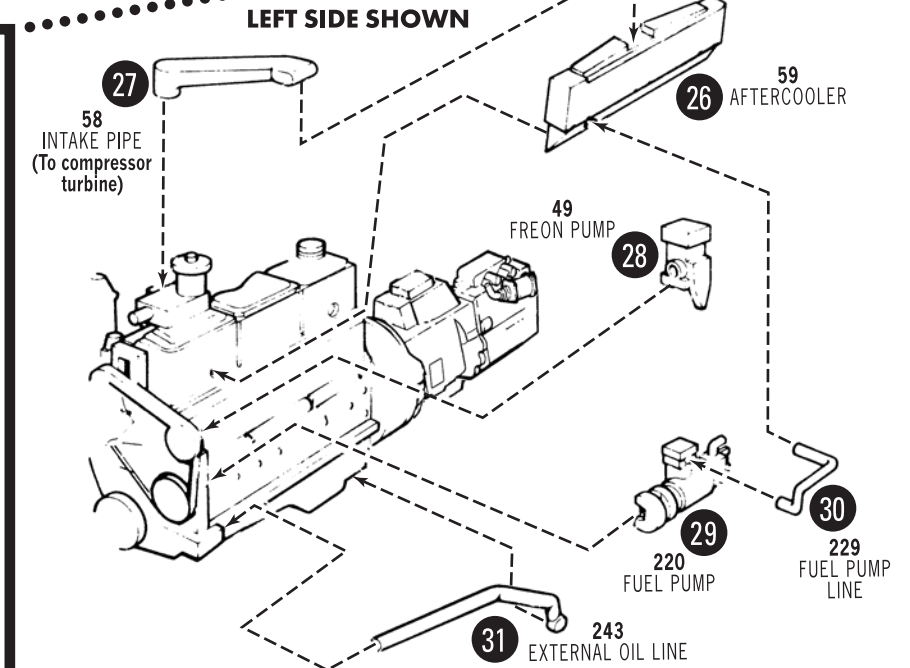
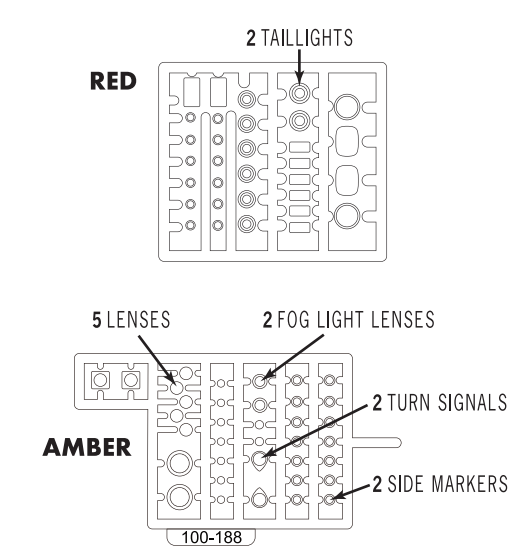
A	Black	J	Steel	O	Yellow	Y	Dark Green
B	Flat Black	K	Brass	R	Tan	Z	Off-White
C	Semi-Gloss Black	L	Gold	S	Brown	CC	Chassis Color
D	White	M	Amber	T	Lt. Blue	IC	Interior Color
E	Flat White	N	Transparent Amber	U	Med. Blue	BC	Body Color
F	Silver	P	Red	V	Dark Blue	SC	Semi-Gloss
G	Chrome (Bright Silver)	Q	Transparent Red	W	Transparent Blue	▲	Gloss
H	Aluminum	R	Orange	X	Lt. Green	▲	Metallic

It is recommended that you search the Internet for additional color references and details.

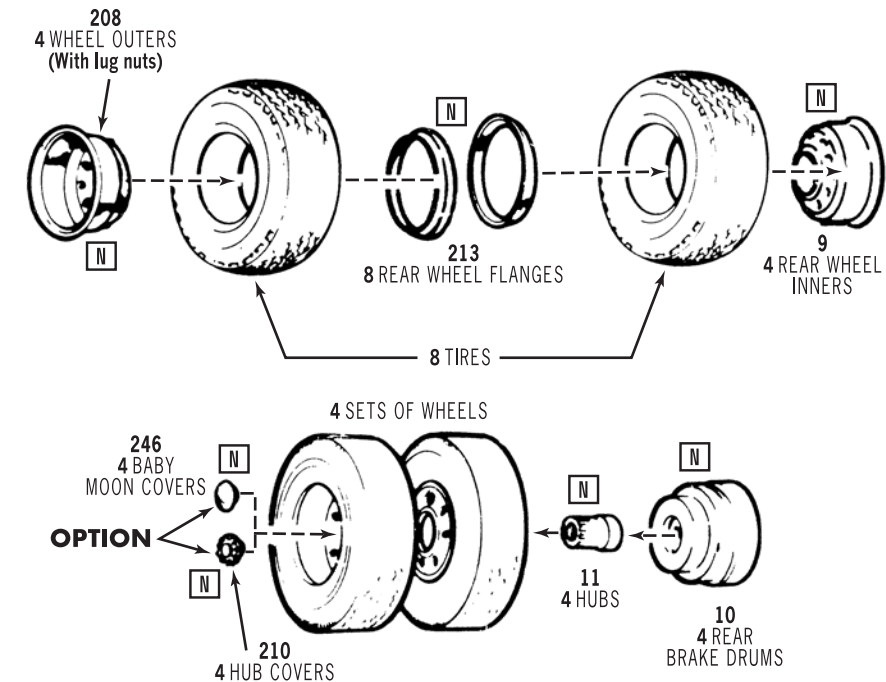
ENGINE 1 - 31



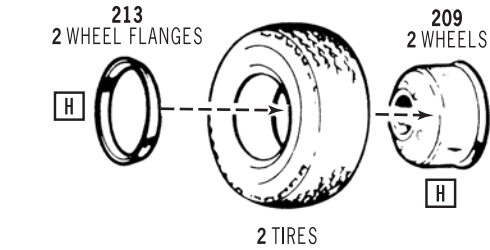
LENSES TO USE



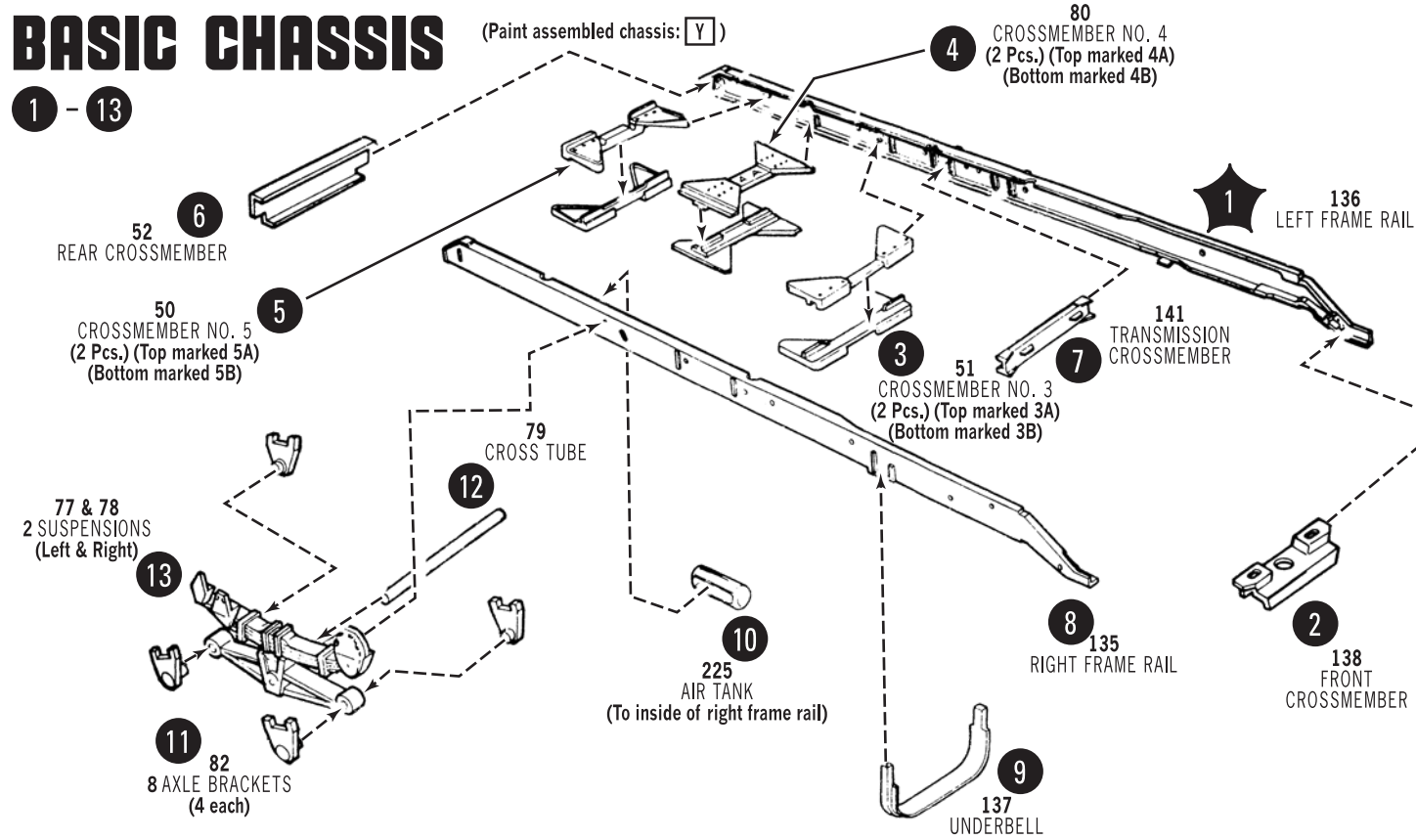
REAR WHEELS



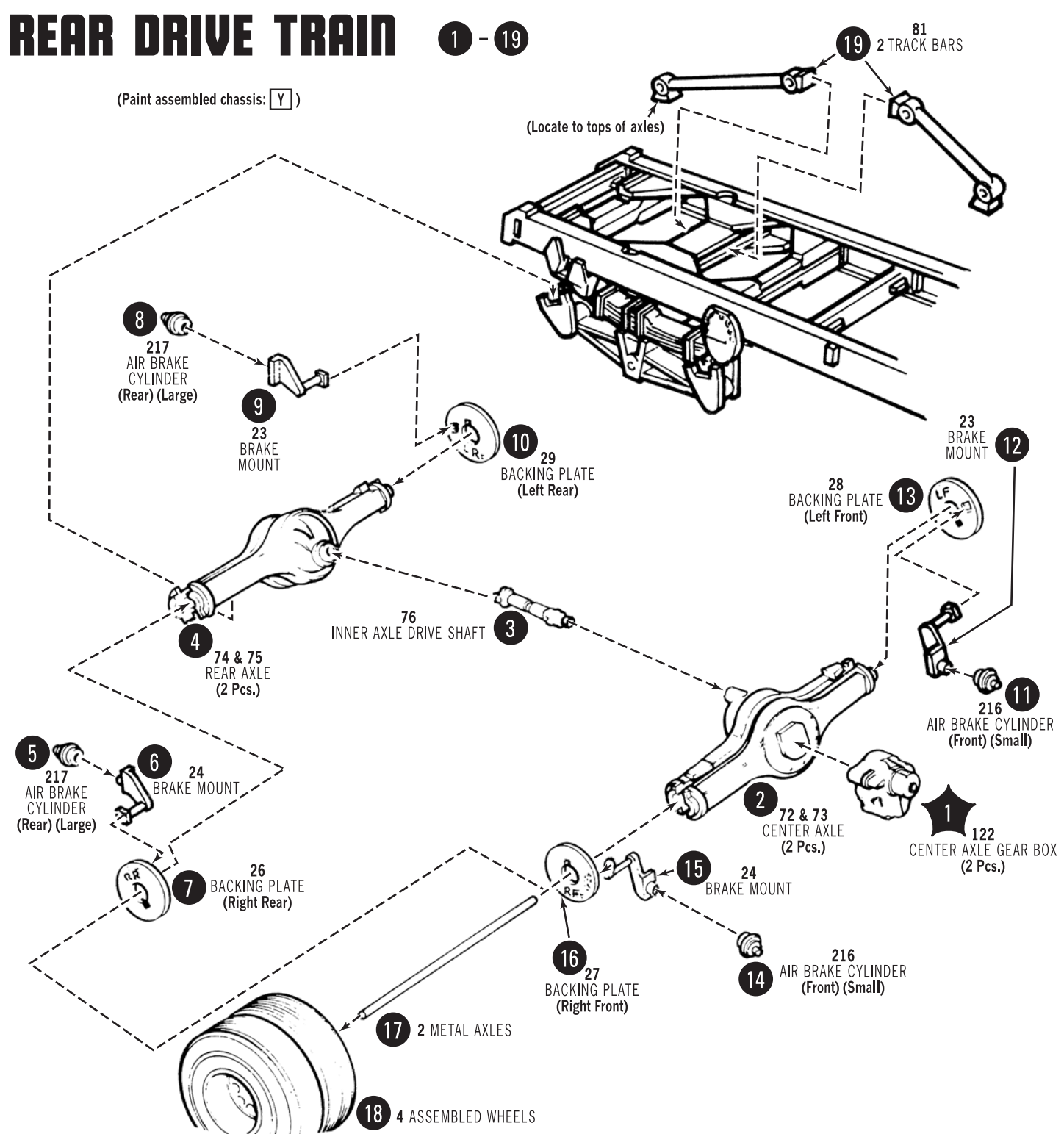
FRONT WHEELS



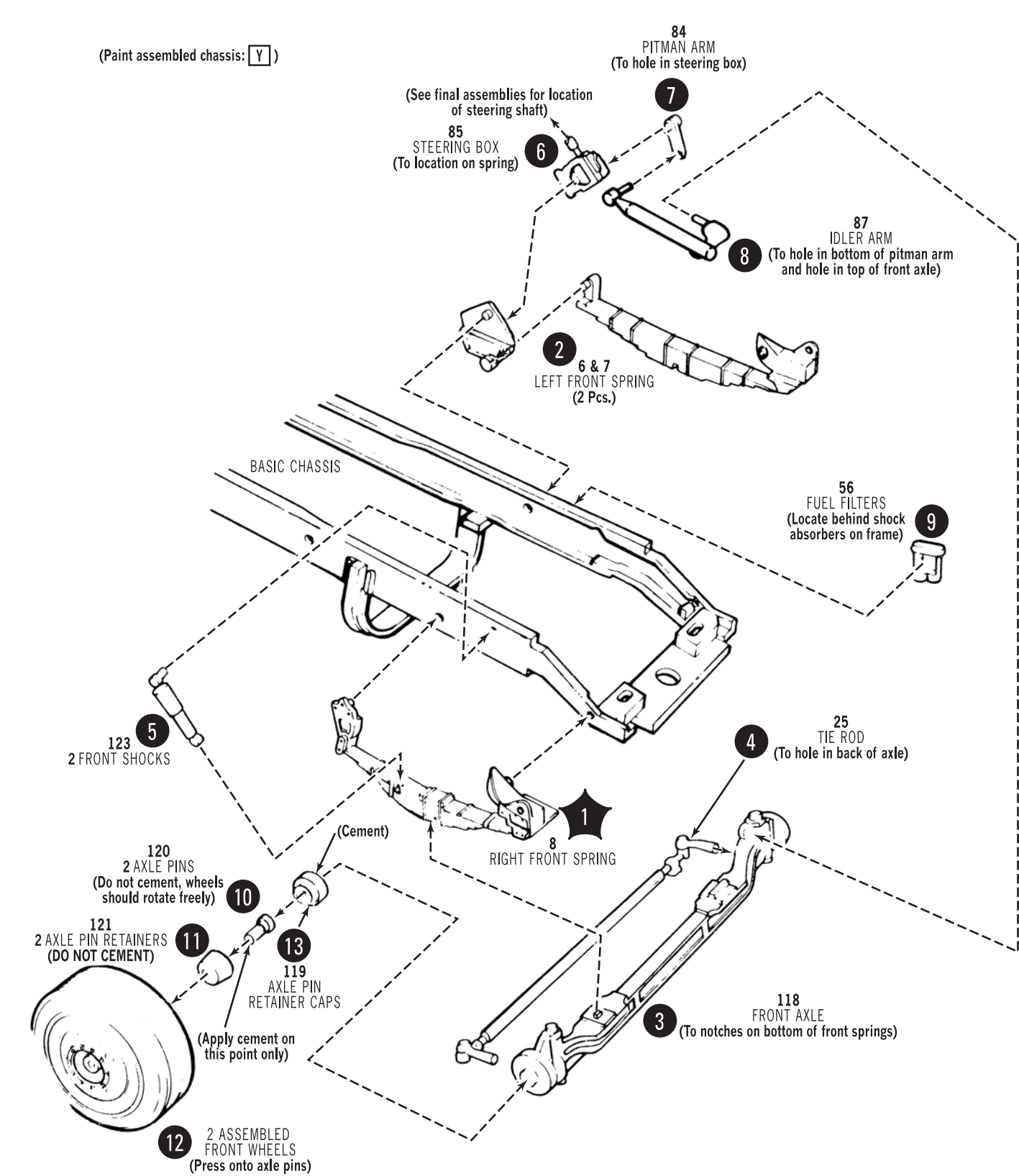
BASIC CHASSIS 1 - 13



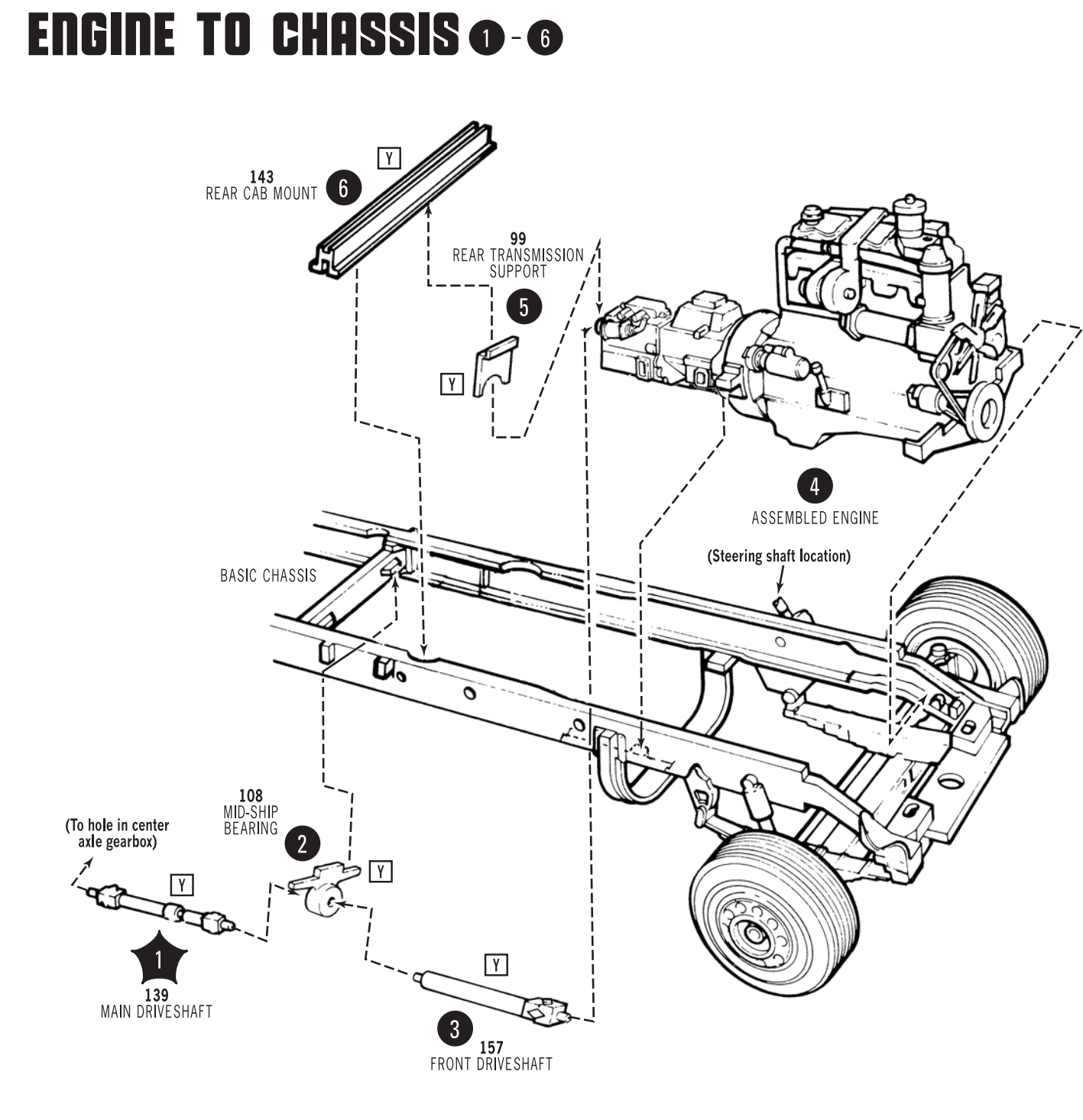
REAR DRIVE TRAIN 1 - 19



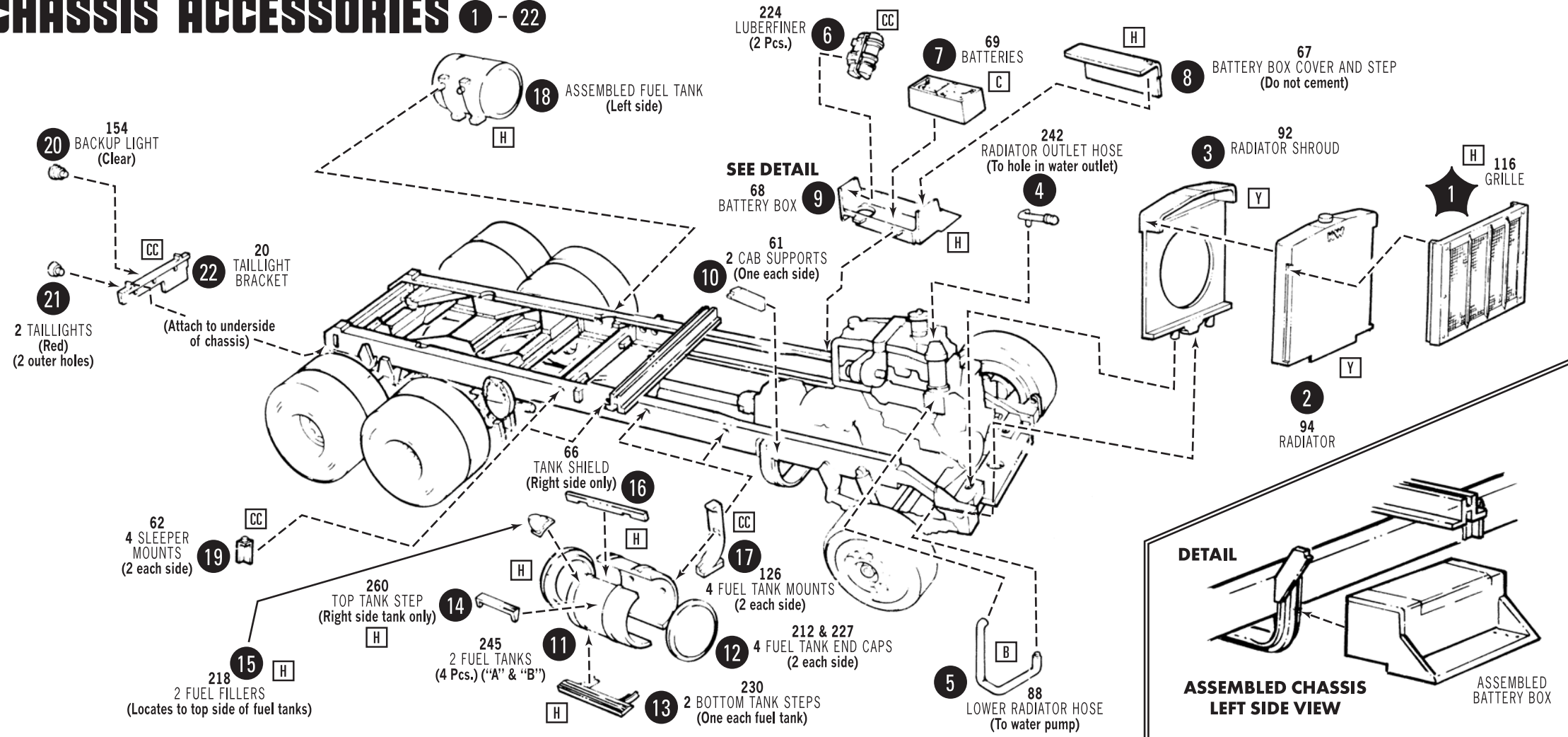
FRONT AXLE 1 - 13



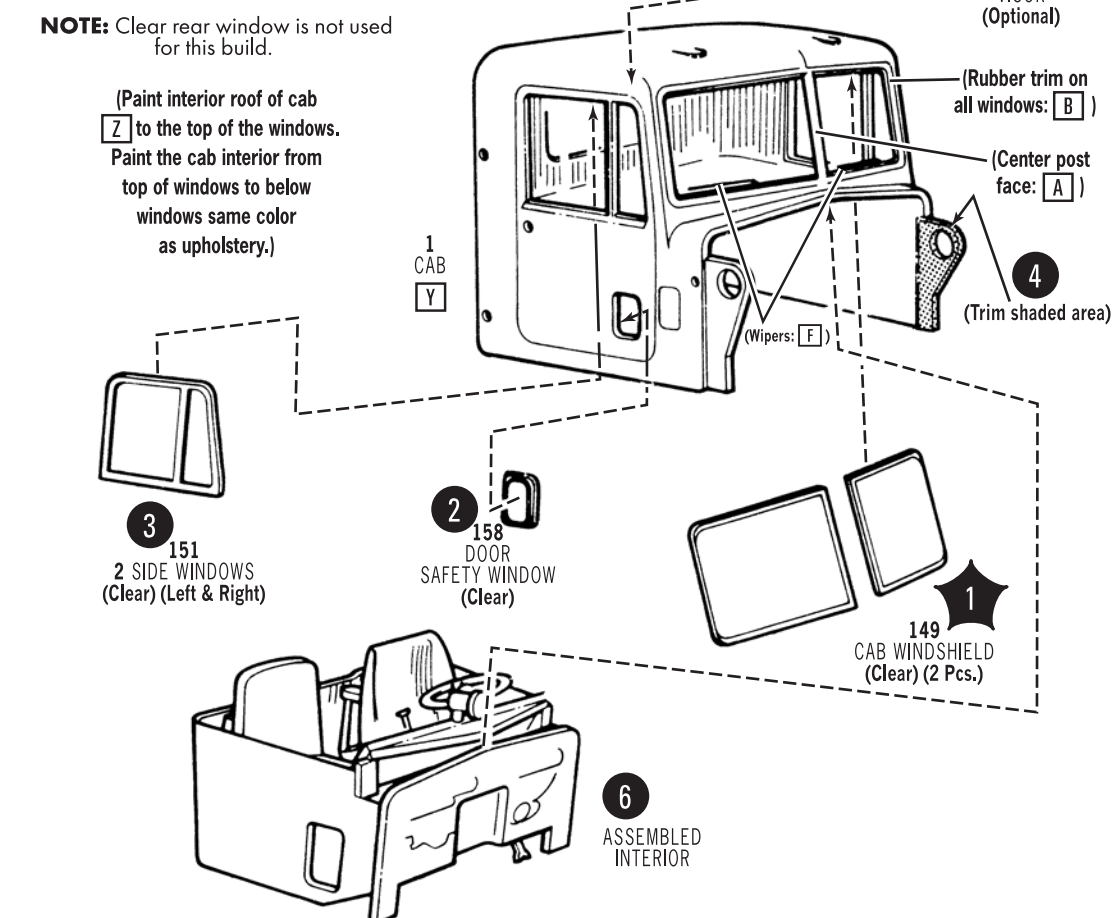
ENGINE TO CHASSIS 1 - 6



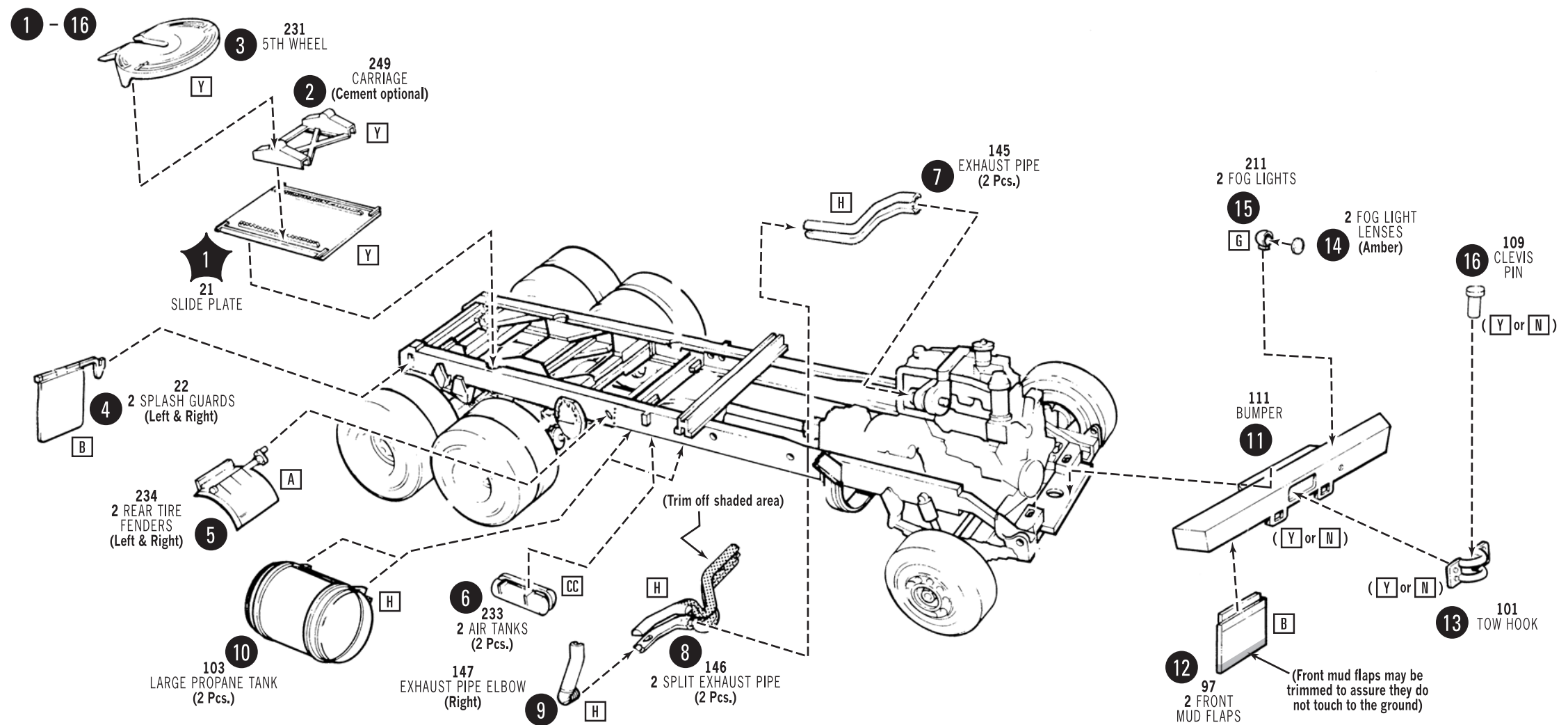
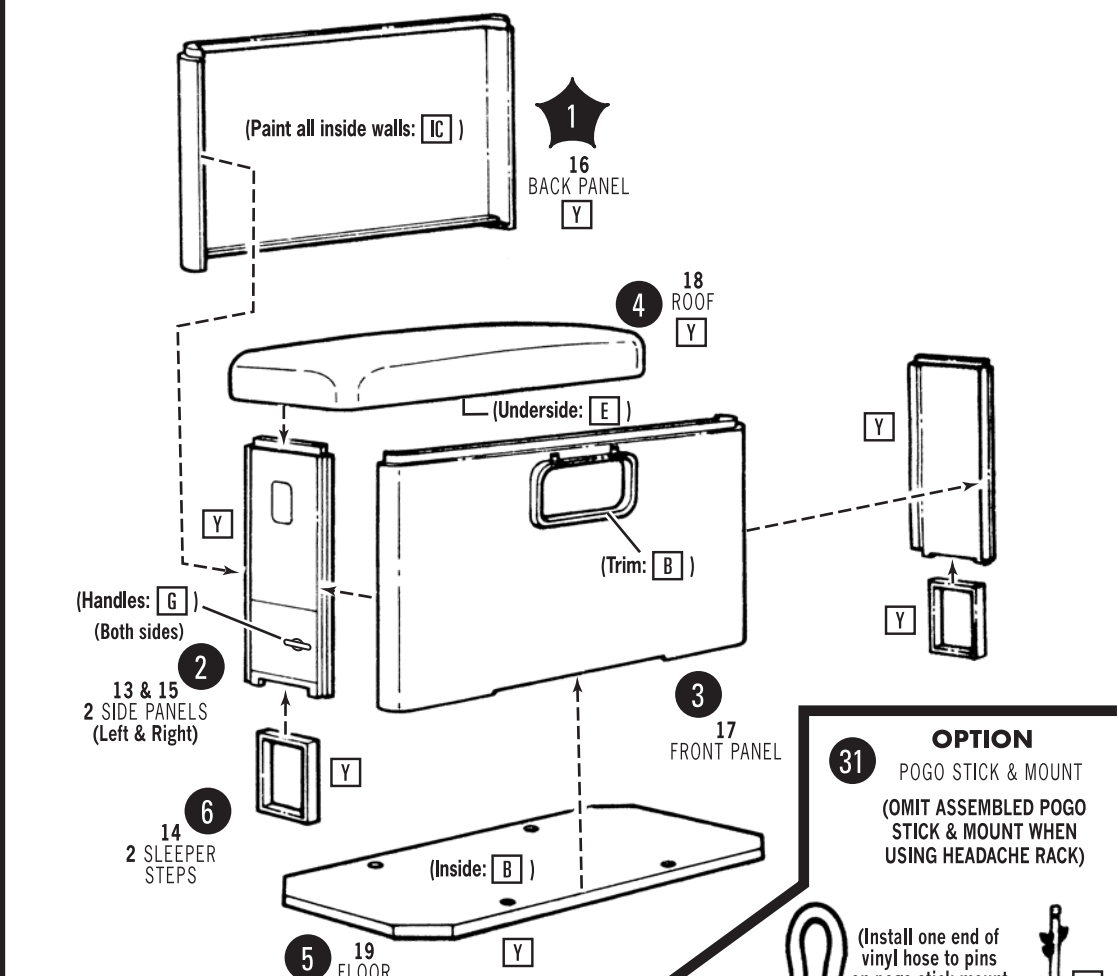
CHASSIS ACCESSORIES 1 - 22



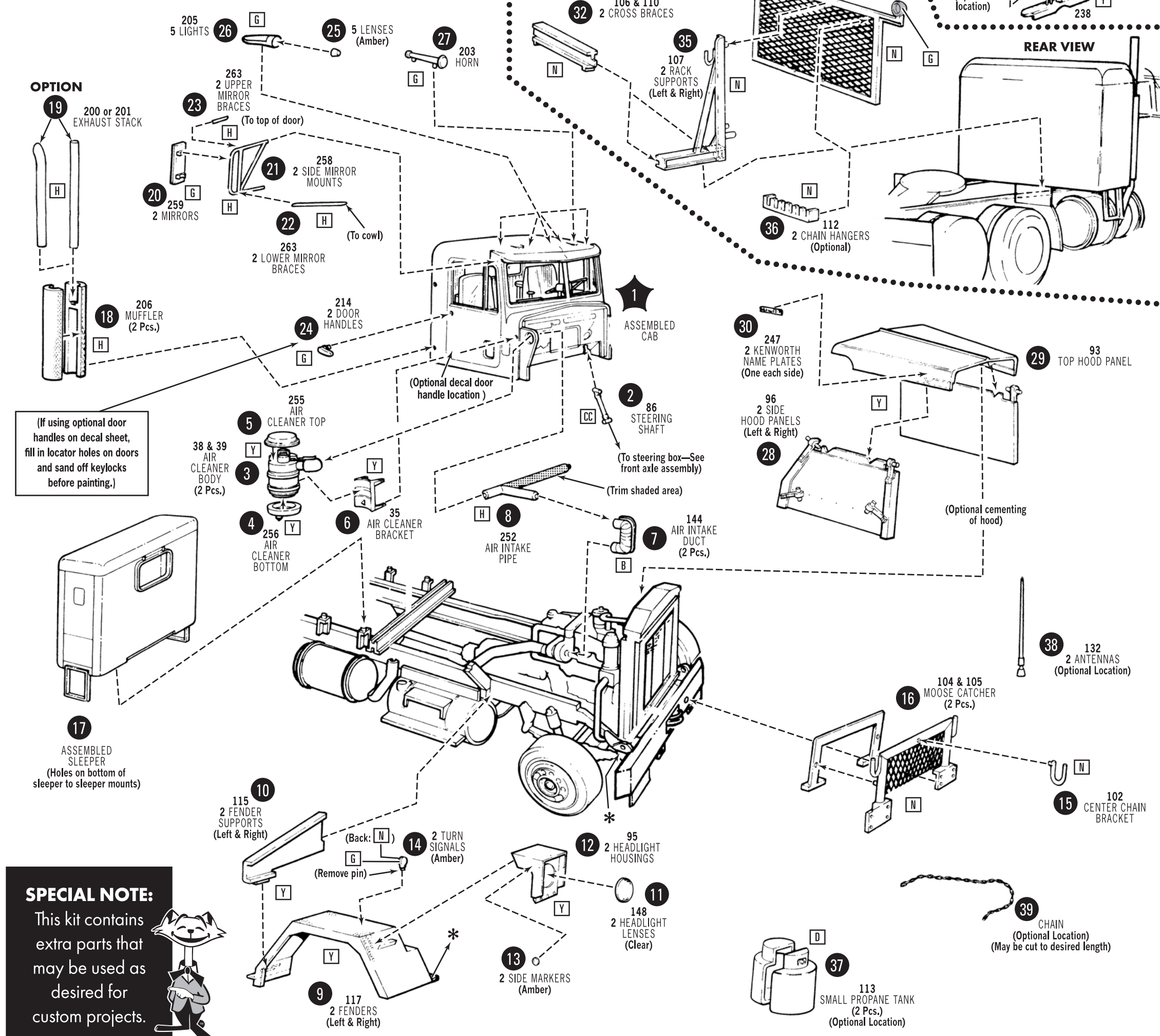
WINDOWS INTERIOR TO CAB 1 - 6



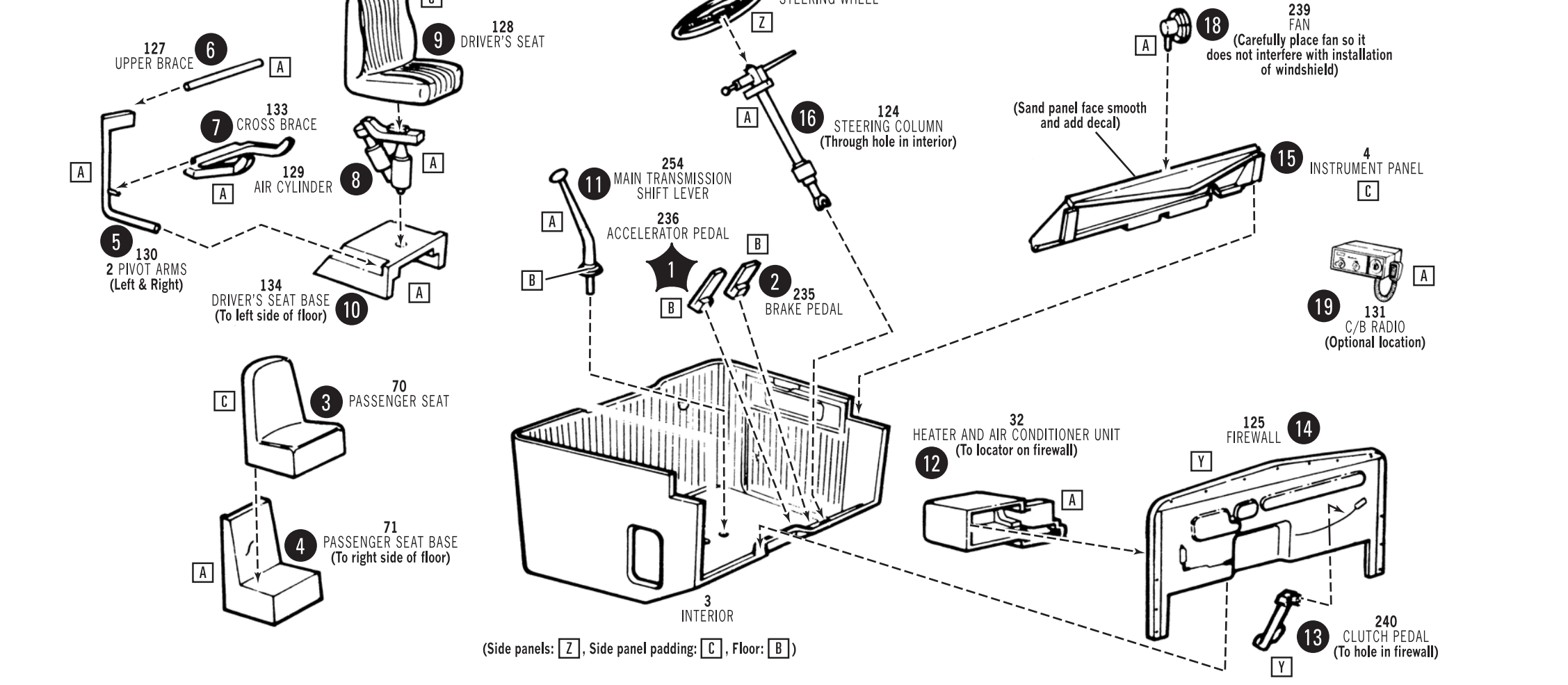
SLEEPER 1 - 6



FINAL ASSEMBLIES 1 - 39



INTERIOR 1 - 19

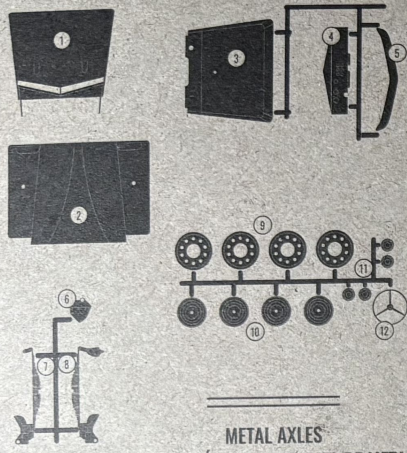
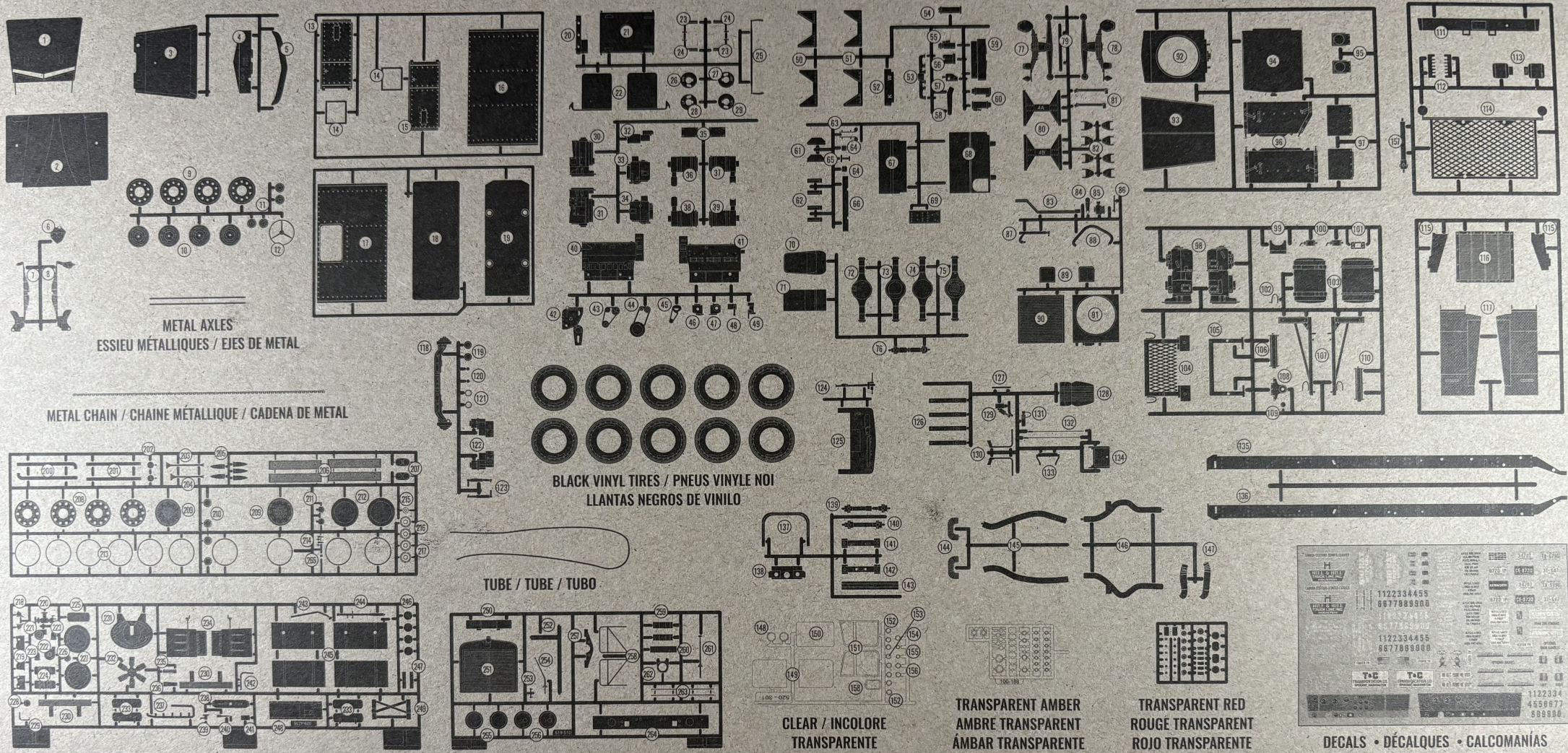


SPECIAL NOTE:
This kit contains extra parts that may be used as desired for custom projects.

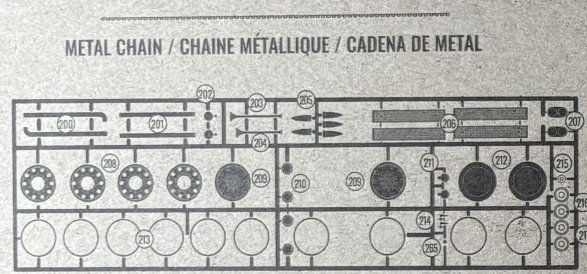


PARTS OVERVIEW / PRÉSENTATION DES PIÈCES / VISTA GENERAL DE LAS PIEZAS

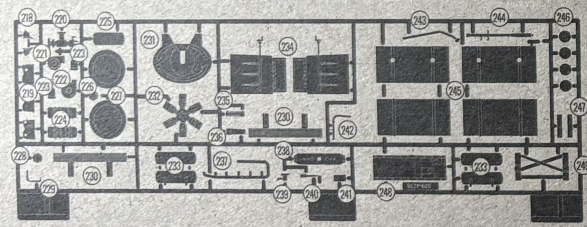
PARTS MOLDED IN WHITE UNLESS OTHERWISE INDICATED / LES PIÈCES SONT MOULUES EN BLANC SAUF INDICATION CONTRAIRE / PIEZAS MODELADAS EN BLANCO A MENOS QUE SE INDIQUE LO CONTRARIO



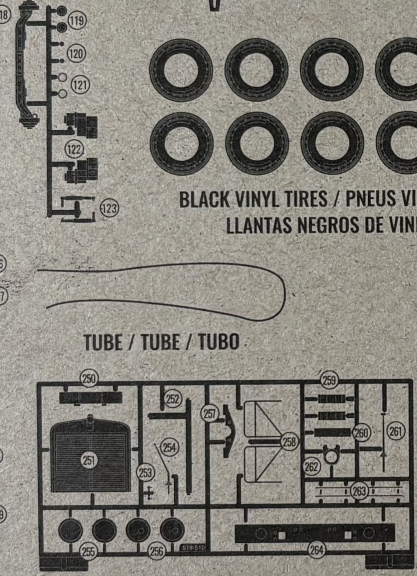
METAL AXLES
ESSIEU MÉTALLIQUES / EJES DE METAL



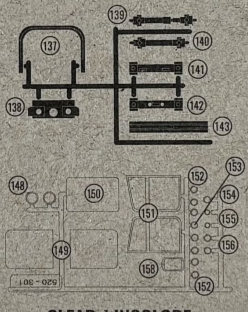
METAL CHAIN / CHAÎNE MÉTALLIQUE / CADENA DE METAL



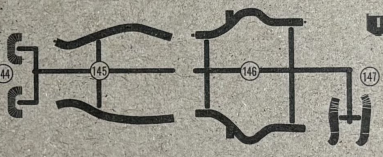
BLACK VINYL TIRES / PNEUS VINYLE NOIR
LLANTAS NEGROS DE VINILO



TUBE / TUBE / TUBO

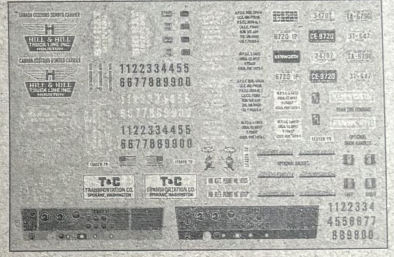


CLEAR / INCOLORE
TRANSPARENTE



TRANSPARENT AMBER
AMBRE TRANSPARENT
ÂMBAR TRANSPARENTE

TRANSPARENT RED
ROUGE TRANSPARENT
ROJO TRANSPARENTE



DECALS • DÉCALQUES • CALCOMANÍAS



1/25 SCALE PLASTIC MODEL KIT / KIT MAQUETTE EN PLASTIQUE À L'ÉCHELLE 1/25 / KIT DE MODELISMO DE PLÁSTICO ESCALA 1/25

KENWORTH and KW & DESIGN TRADEMARKS LICENSED BY PACGAR INC, BELLEVUE, WASHINGTON, U.S.A. Peerless Trademarks used under license to Round 2, LLC. Other names and trademarks used under license to Round 2, LLC or by permission. AMT and ROUND2 and designs are registered trademarks of Round 2, LLC. ©2022 Round 2, LLC, South Bend, IN 46628 USA. Product and packaging designed in the USA. Made in China. All rights reserved.



WARNING: CHOKING HAZARD - Small parts.
Not for children under 3 yrs.

AVERTISSEMENT : DANGER DE SUFFOCATION - Petites pièces.
Ne convient pas pour les enfants de moins de 3 ans.

ADVERTENCIA: PELIGRO DE ASFIXIA - Contiene piezas pequeñas.
No apto para niños menores de 3 años.

This item is not a toy. Recommended for Modelers and Hobbyists with Adult supervision. No play value. Model only for display purposes after assembly. / Cet article n'est pas un jouet. Recommandé pour les modélisateurs et les amateurs avec supervision d'un adulte. Aucune valeur de jeu. Modèle uniquement à des fins d'affichage après assemblage. / Este artículo no es un juguete. Recomendado para modeladores y aficionados con supervisión de adultos. Sin valor de juego. Modelo sólo para fines de visualización después del montaje.

Manufacturing Location: Dongguan, Guangdong Province, China.
Site de fabrication: Dongguan, province de Guangdong, Chine.
Ubicación de la fábrica: Dongguan, provincia de Guangdong, China.

AMT1339/06
ALASKAN HAULER - KENWORTH
CONVENTIONAL TRACTOR



For a complete list of our newest model kits and more, visit:
Pour une liste complète de tous nos nouveaux modèles, visitez:
Para obtener una lista completa de nuestros kits de modelos más nuevos y más, visite:
round2corp.com

ROUND 2, LLC
4073 MEGHAN BEELER COURT
SOUTH BEND, IN 46628

8 49398 05620 2
05/22/2024 A1