

A&N Model Trucks

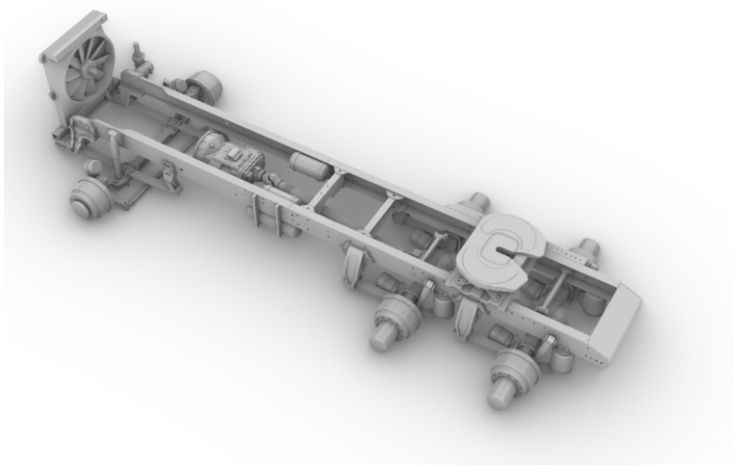


Photo-etched chassis for
Aussie Argosy truck

Scale 1/24

Warning!

Please follow this instruction while assembling, otherwise you could face problems with assembling the model.

Photo-etched parts have sharp edges, please be careful.

This model kit contains small parts and is not suitable for children.

This model is for advanced modellers only.

Symbols:

☹ - glue parts;

⊘ - do not glue parts;

↪ - bend parts;

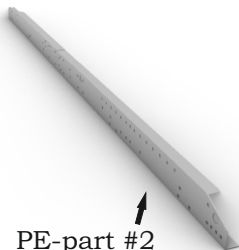
! - attention;

↔ - moving parts;

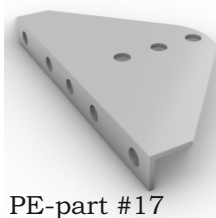
? - your choice;

h# - frame rails holes' numbers;

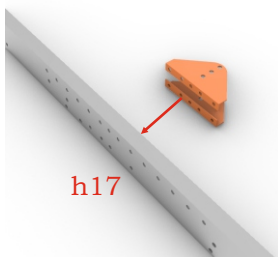
1. ↪



2. ↪ x2



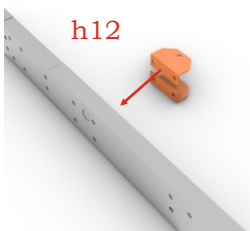
3. ☹



4. ↪ x2



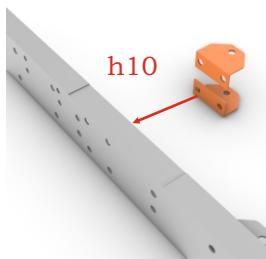
5. ☹ x2

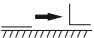


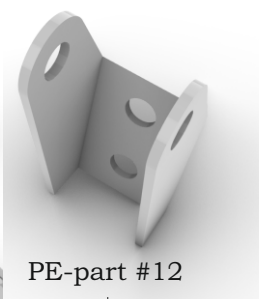
6. ↪ x2



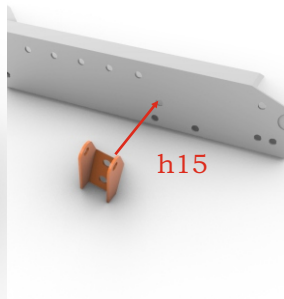
7.  x2



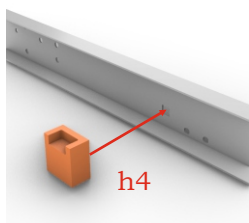
8.  x2



9.  x2



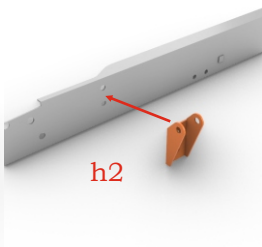
10. 



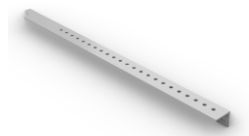
11. 



12. 

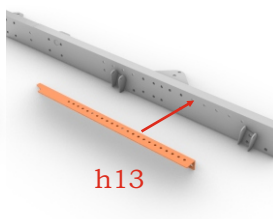


13. 



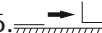
PE-part #4

14. 

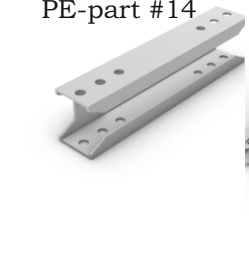


15.

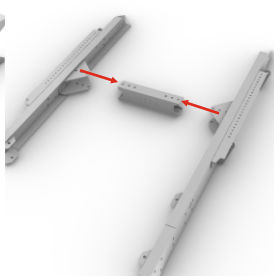
Repeat steps 1-14 for right side.

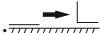
16. 

PE-part #14

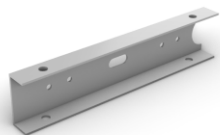


17. 

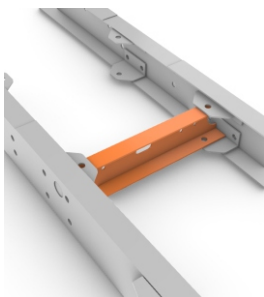


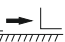
18. 

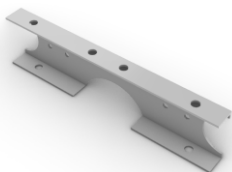
PE-part #11




19. 



20. 



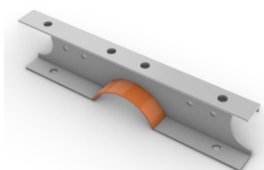
PE-part #15

21. 

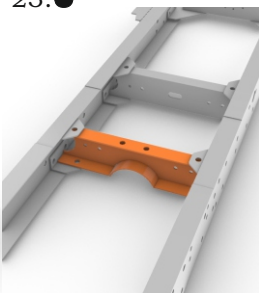



PE-part #3

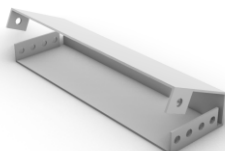
22. 



23. 

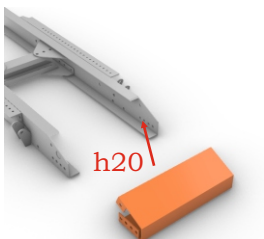


24. 



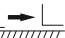
PE-part #13

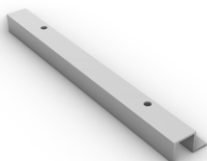
25. 



26.

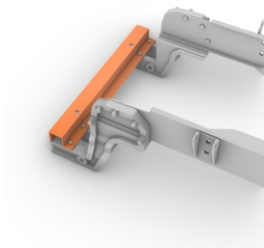
Jump on step #49 of instruction for A&N Aussie Argosy cab kit.

27. 

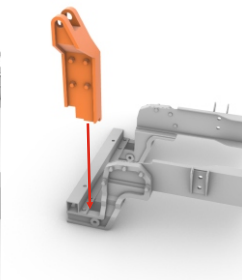


PE-part #5

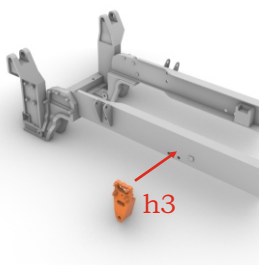
28. 



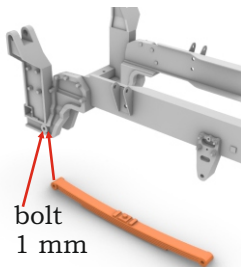
29.  x2



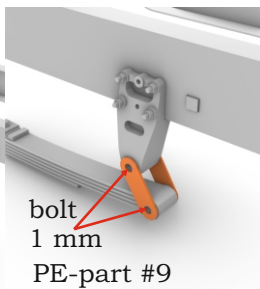
30.  x2



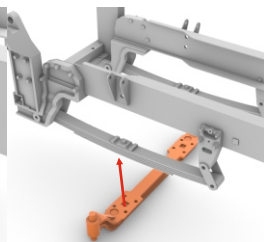
31.  x2



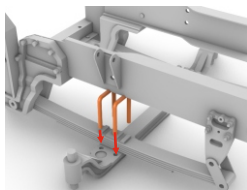
32.  x2



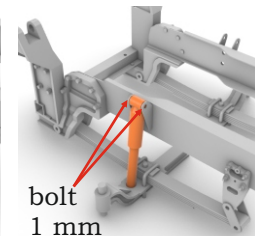
33. 



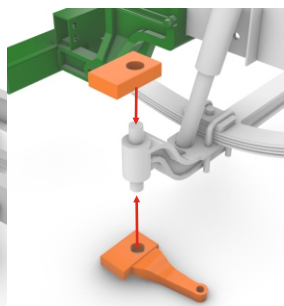
34.  x2



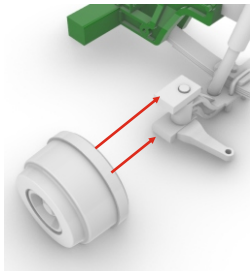
35.  x2



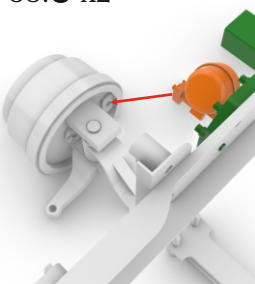
36.  x2



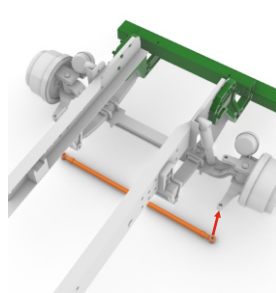
37.  x2



38.  x2



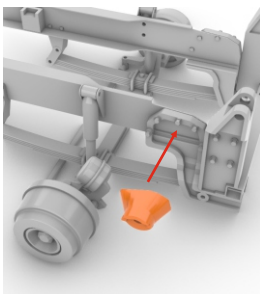
39. 



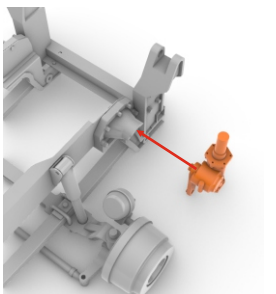
40. 



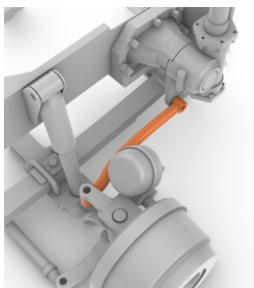
41. 



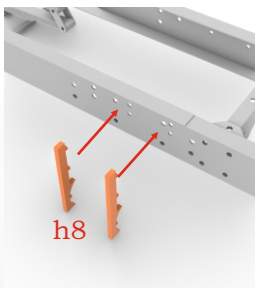
42. 



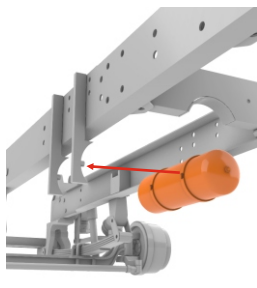
43. 



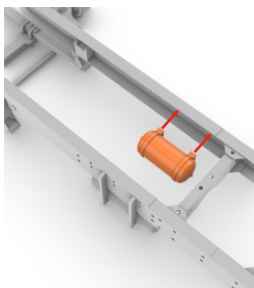
44. 



45. 



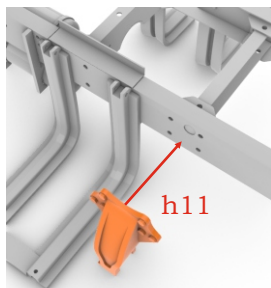
46.  x2



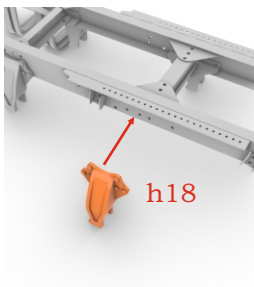
47.

Jump on step #51 of instruction for A&N Aussie Argosy cab kit.

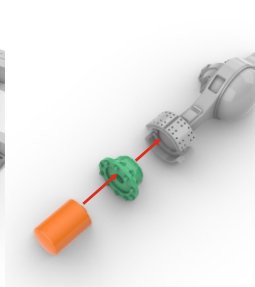
48.  x2



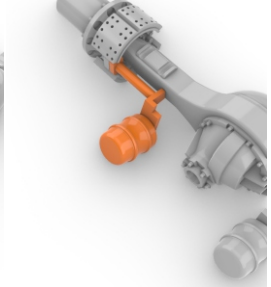
49.  x2



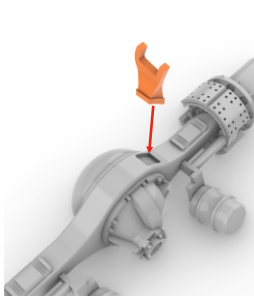
50.  x4



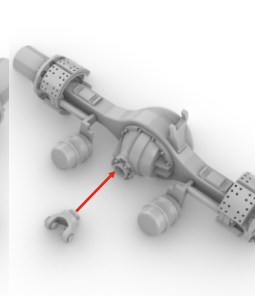
51.  x2



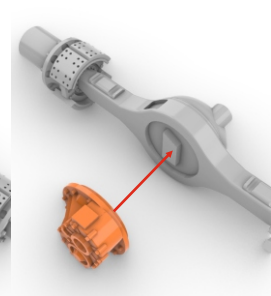
52. 



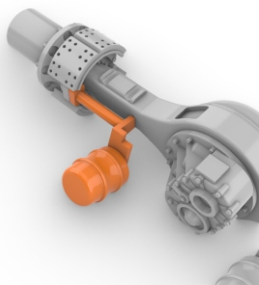
53. 



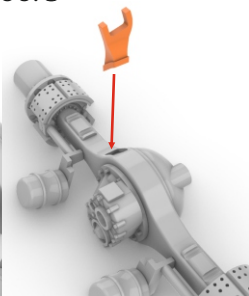
54. 



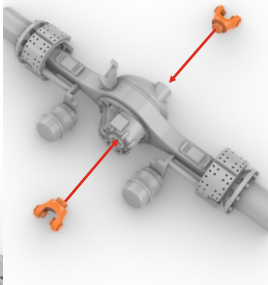
55.  x2



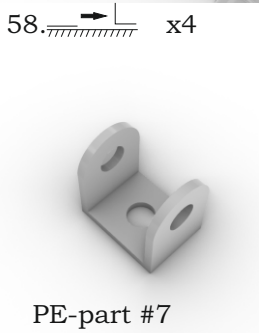
56. 



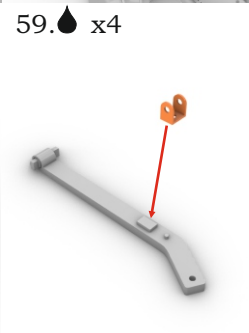
57. 



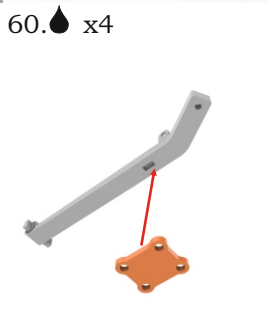
58.  x4



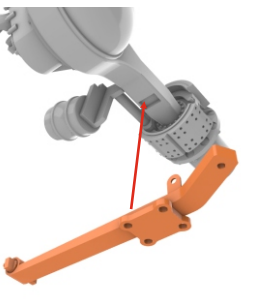
59.  x4



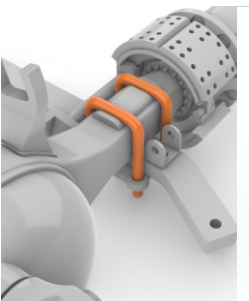
60.  x4



61.  x4



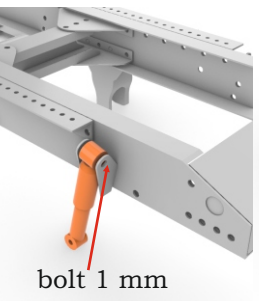
62.  x4




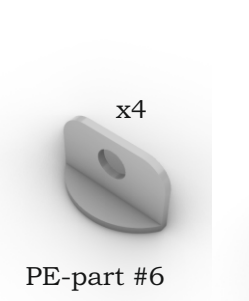
63.  x4



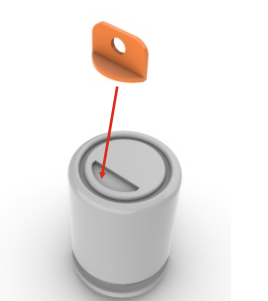
64.  x4

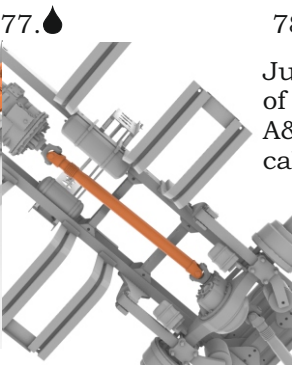
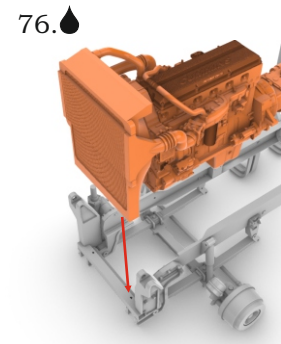
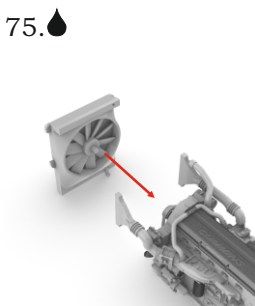
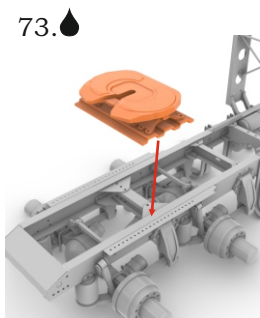
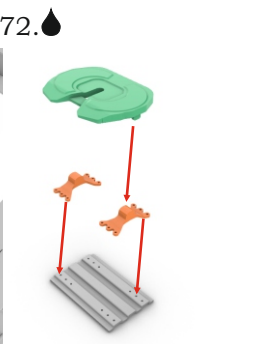
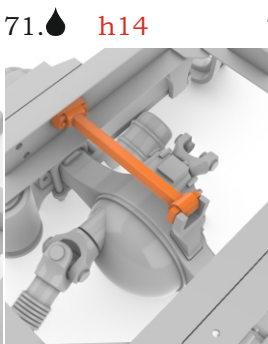
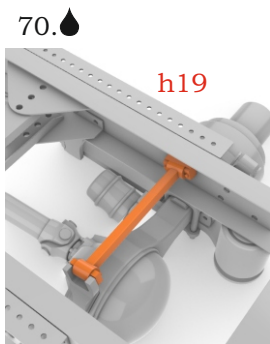
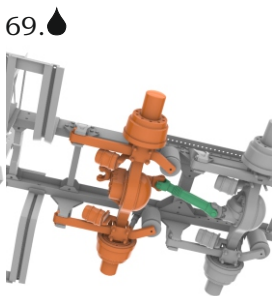
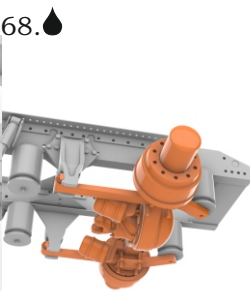
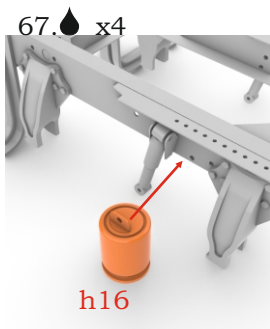


65. 



66.  x4





78.
Jump on step #86
of instruction for
A&N Aussie Argosy
cab kit.