

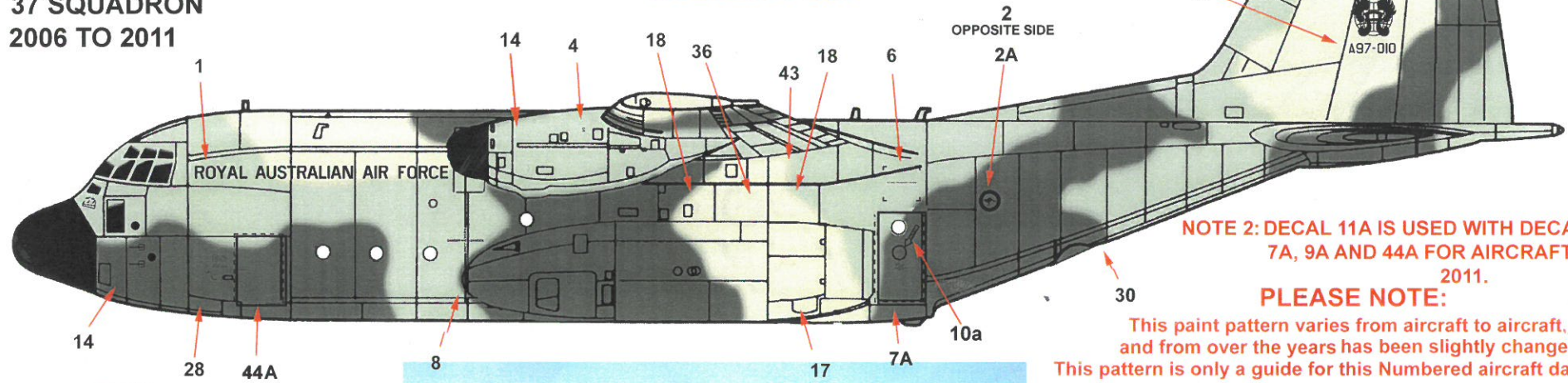


# RAAF C-130H HERCULES 36 SQUADRON 1988 TO 2006 AND 37 SQUADRON 2006 TO 2011



**37 SQUADRON  
2006 TO 2011**

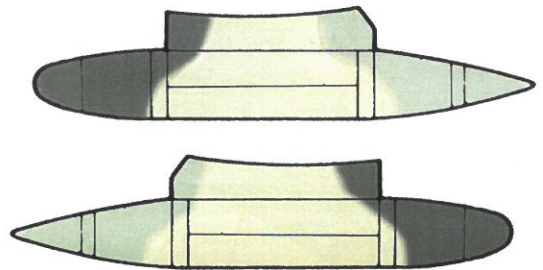
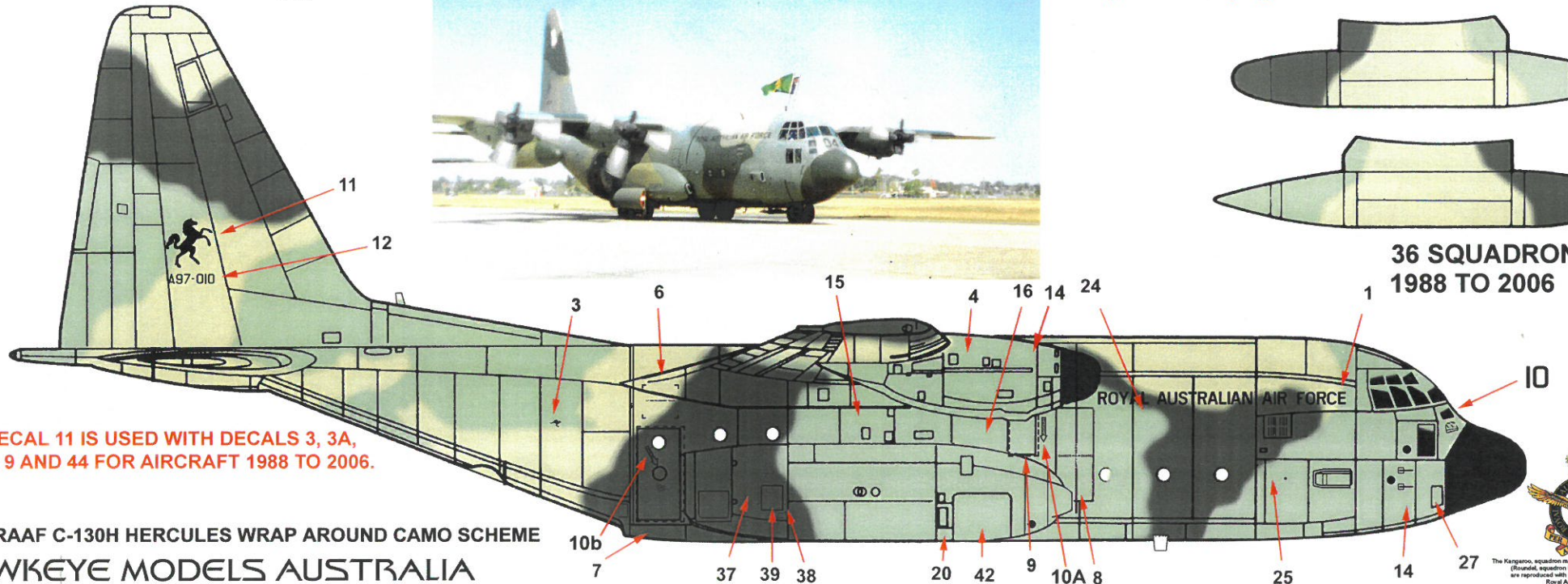
FOR  
1/72 ZVEZDA C-130H



**NOTE 2: DECAL 11A IS USED WITH DECALS 2, 2A, 7A, 9A AND 44A FOR AIRCRAFT 2006 TO 2011.**

**PLEASE NOTE:**

This paint pattern varies from aircraft to aircraft, and from over the years has been slightly changed. This pattern is only a guide for this Numbered aircraft dated 2001



**36 SQUADRON  
1988 TO 2006**

**NOTE 1: DECAL 11 IS USED WITH DECALS 3, 3A, 7, 9 AND 44 FOR AIRCRAFT 1988 TO 2006.**

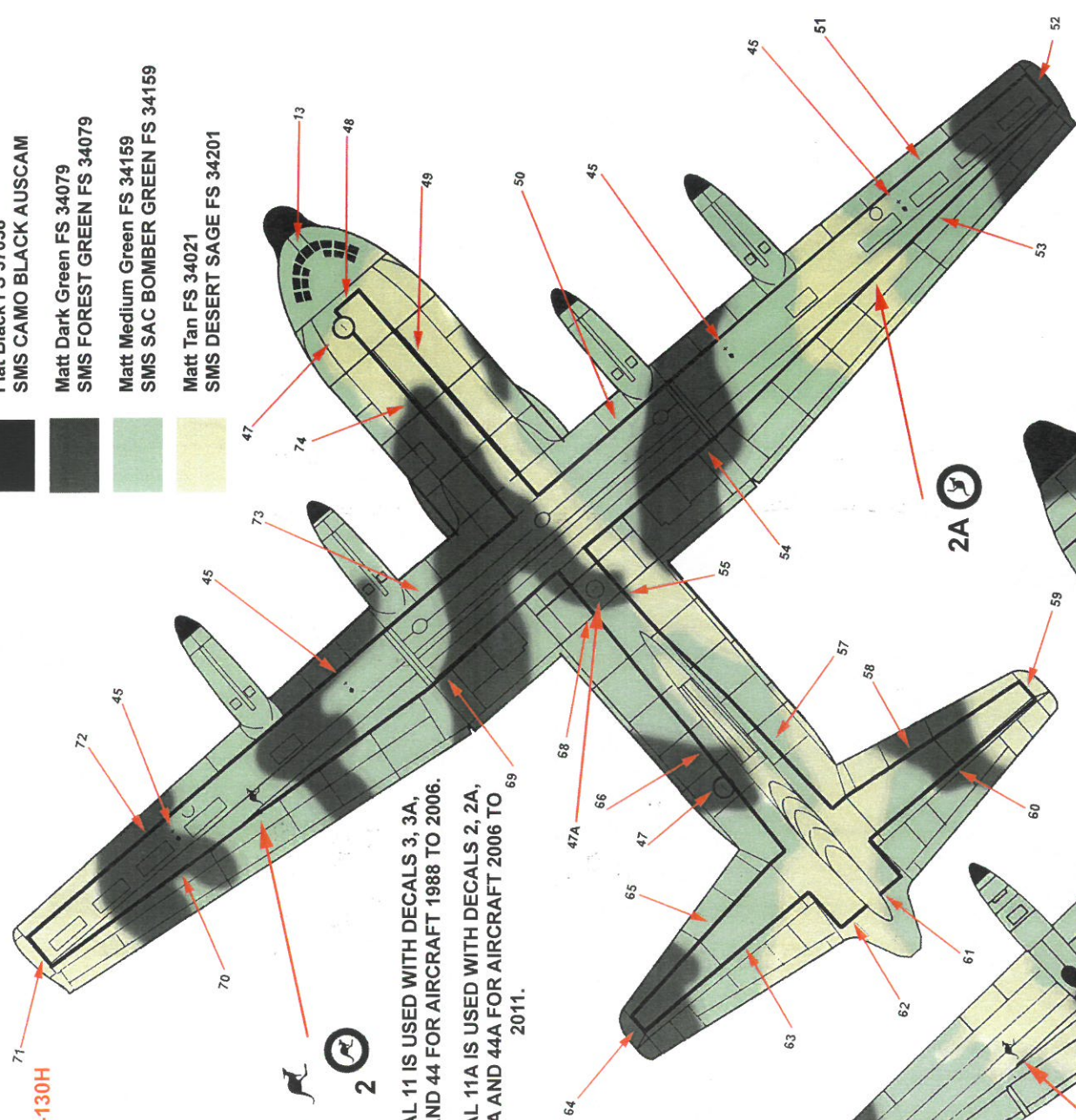
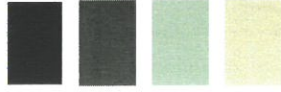
AAF-47 RAAF C-130H HERCULES WRAP AROUND CAMO SCHEME  
HAWKEYE MODELS AUSTRALIA



The Kangaroo, squadron markings, crests and national markings (Shoulder, squadron logo and country of origin flag) are reproduced with permission and approval by the Royal Australian Air Force.

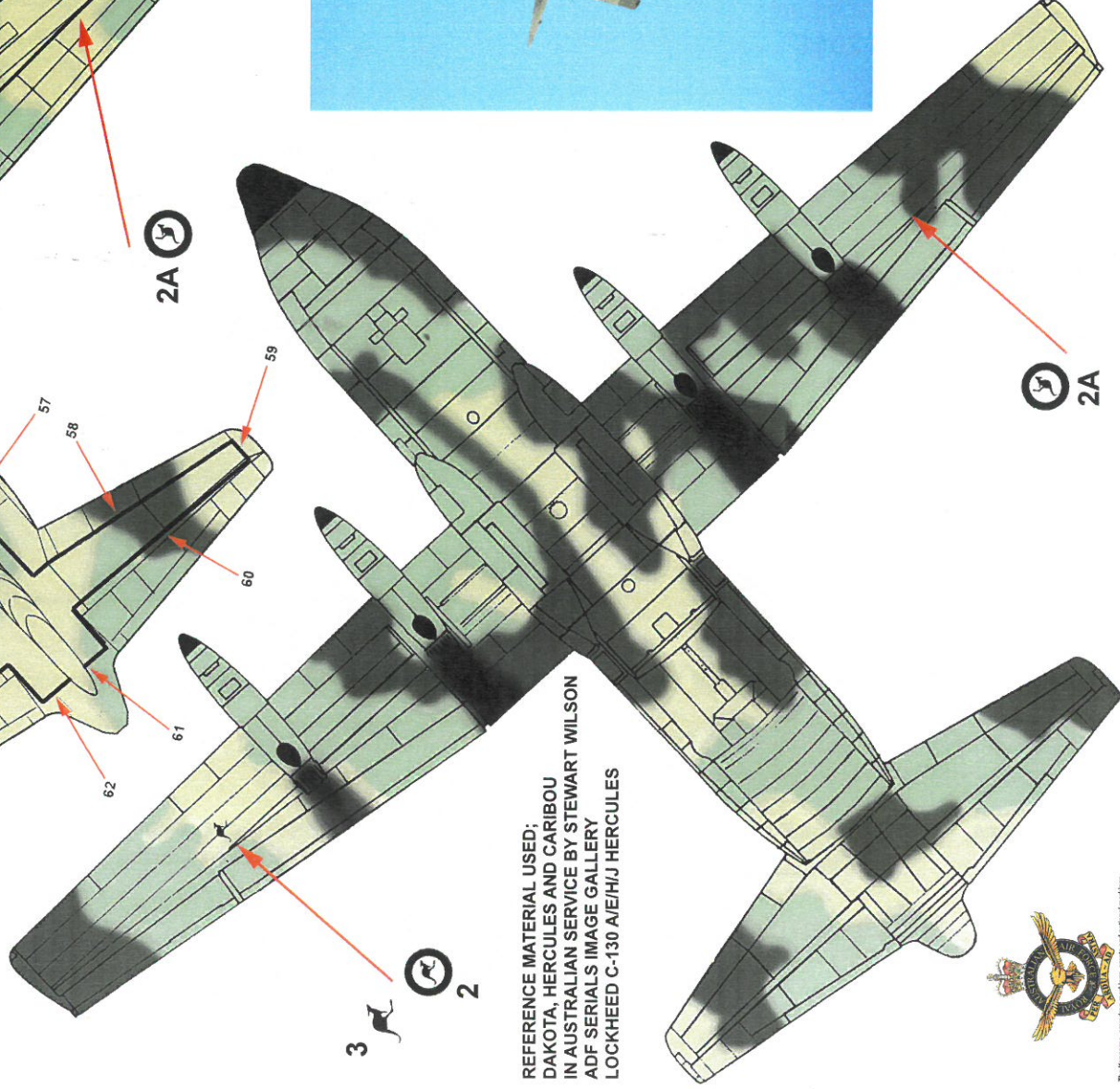
**FOR  
1/72 ZVEZDA C-130H**

- Flat Black FS 37038
- SMS CAMO BLACK AUSCAM
- Matt Dark Green FS 34079
- SMS FOREST GREEN FS 34079
- Matt Medium Green FS 34159
- SMS SAC BOMBER GREEN FS 34159
- Matt Tan FS 34021
- SMS DESERT SAGE FS 34201



**NOTE 1:** DECAL 11 IS USED WITH DECALS 3, 3A, 7, 9 AND 44 FOR AIRCRAFT 1988 TO 2006.

**NOTE 2:** DECAL 11A IS USED WITH DECALS 2, 2A, 7A, 9A AND 44A FOR AIRCRAFT 2006 TO 2011.



**REFERENCE MATERIAL USED:  
DAKOTA, HERCULES AND CARIBOU  
IN AUSTRALIAN SERVICE BY STEWART WILSON  
ADF SERIALS IMAGE GALLERY  
LOCKHEED C-130 A/E/H/J HERCULES**



