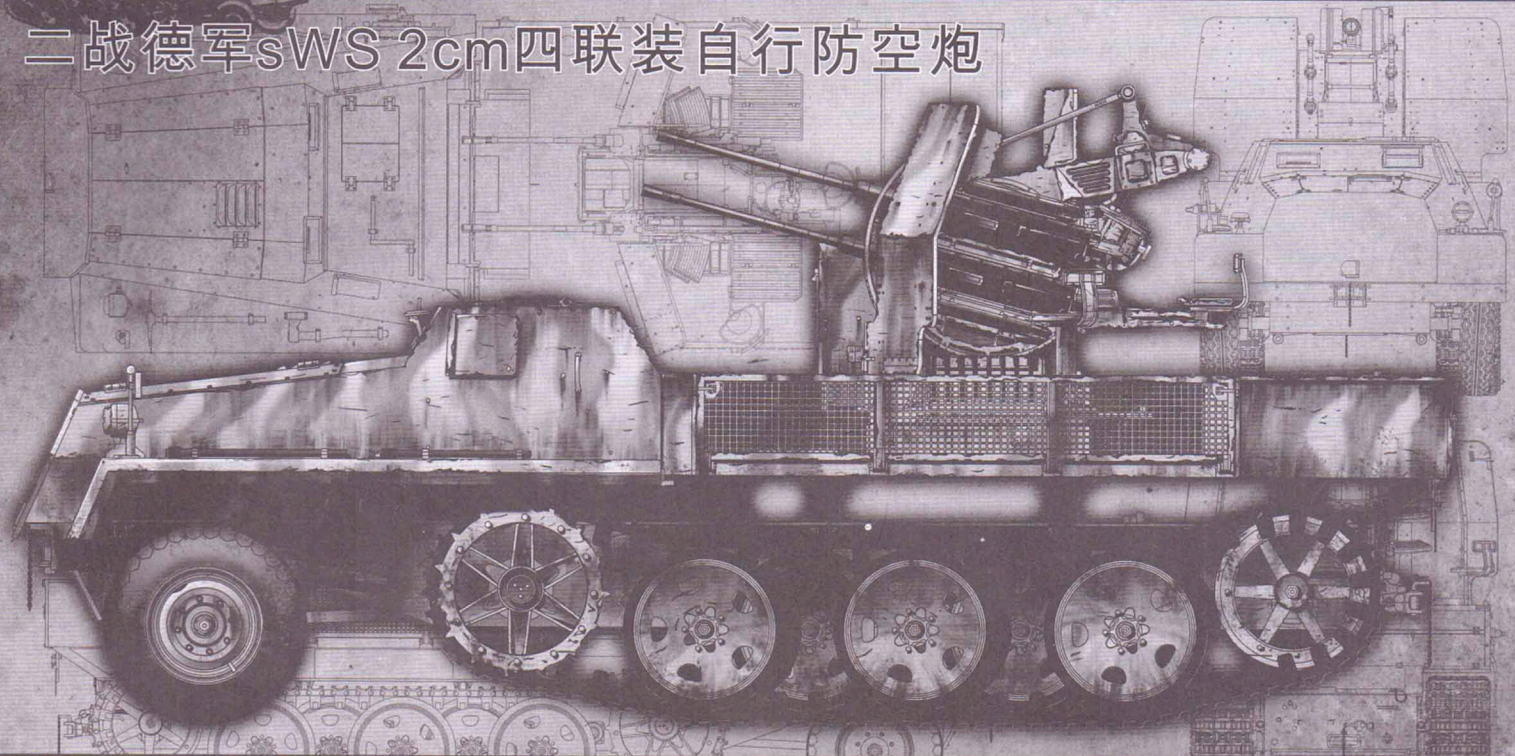


GERMAN sWS with 2cm FLAKVIERLING

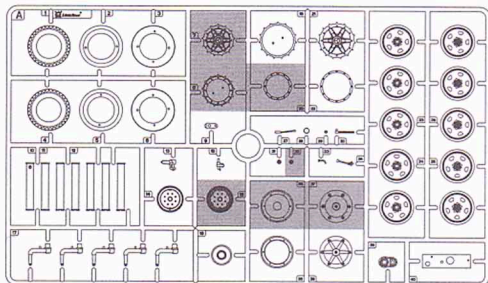


二战德军sWS 2cm四联装自行防空炮

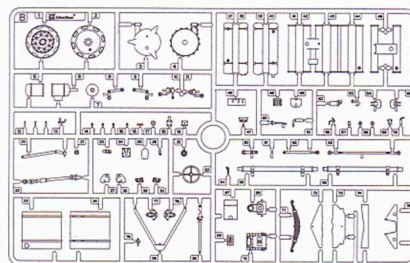


ITEM L3525

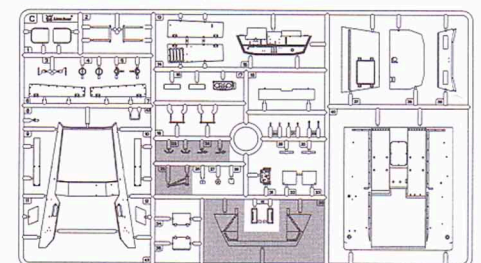
A PARTS × 2



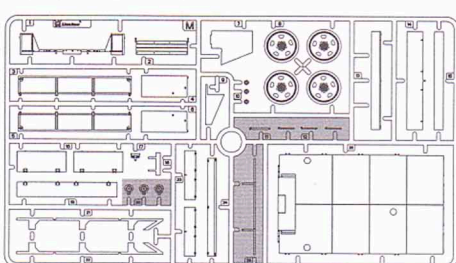
B PARTS × 1



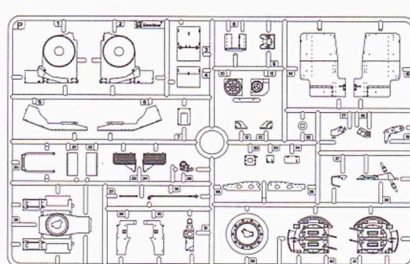
C PARTS × 1



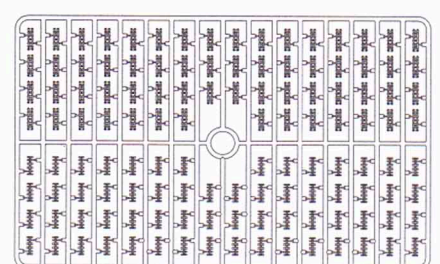
M PARTS × 1



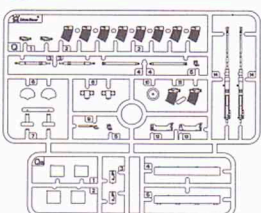
P PARTS × 1



PARTS × 2



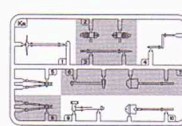
Q PARTS × 2



G PARTS × 1



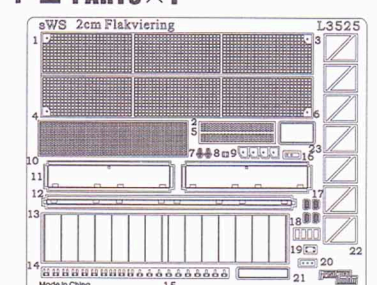
Ka PARTS × 1



Ke PARTS × 1



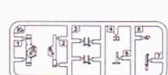
PE PARTS × 1



Decal PARTS × 1



Kb PARTS × 1



Kf PARTS × 1



△注意:

1. 勿於近火處使用膠水或油漆，並打開窗戶保持空氣流通。
2. 塗料的號碼請參考本欄以下的說明。本品本身不包括膠水和塗料。
3. 自膠架中取出部件時，應用模型專用剪，並用介刀或小挫除去多餘膠料。
4. 各圖形的含義可參考本欄以下的說明。

△CAUTION:

1. When you use glue or paint, do not use near a open flame, and sue in a well-ventilated room.
2. See below for the color list. Glue and paint are not included in this kit.
3. When you take parts off the runner frame, use the modeling scissors and trim excess plastic with a cutter or a file.
4. See below for the meaning of symbols.

△組み立ての注意:

1. 接着剤や塗料は火の近くで使わないで下さい、使用の際は換気を良くして下さい。
2. 塗料指定のは下記のとおりです、接着剤や塗料は入っていないので別に求めて下さい。
3. 部品をランナーから切り離す時は模型用ハサミ等を使い、余分な部分はカッターやヤスリ等で仕上げて下さい。
4. 組立図のサインマークは下の説明を御覧下さい。



Fill hole
填平

穴を埋めてください



Apply decal
水印貼紙

デカールをはって下さい



Cut off
切除

切り取って下さい



Cement
胶水

接着しないで下さい



Open hole
钻孔

穴をあけて下さい



Do the same
on the opposite

另一側同制作
反対側も取り付けます



Bend
弯折

折り曲げて下さい



Make two sets
制作二組

2個作って下さい



No cement
不用胶水

接着してください



Instant glue
for metal

瞬間接着剤(金属用)



Optional
选择使用

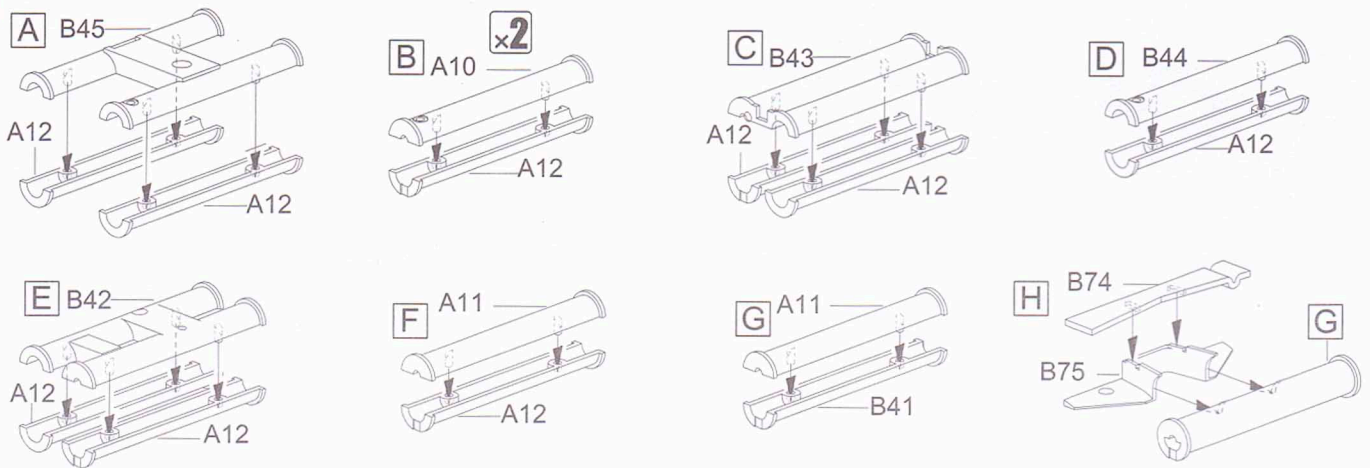
どちらかを選んで下さい



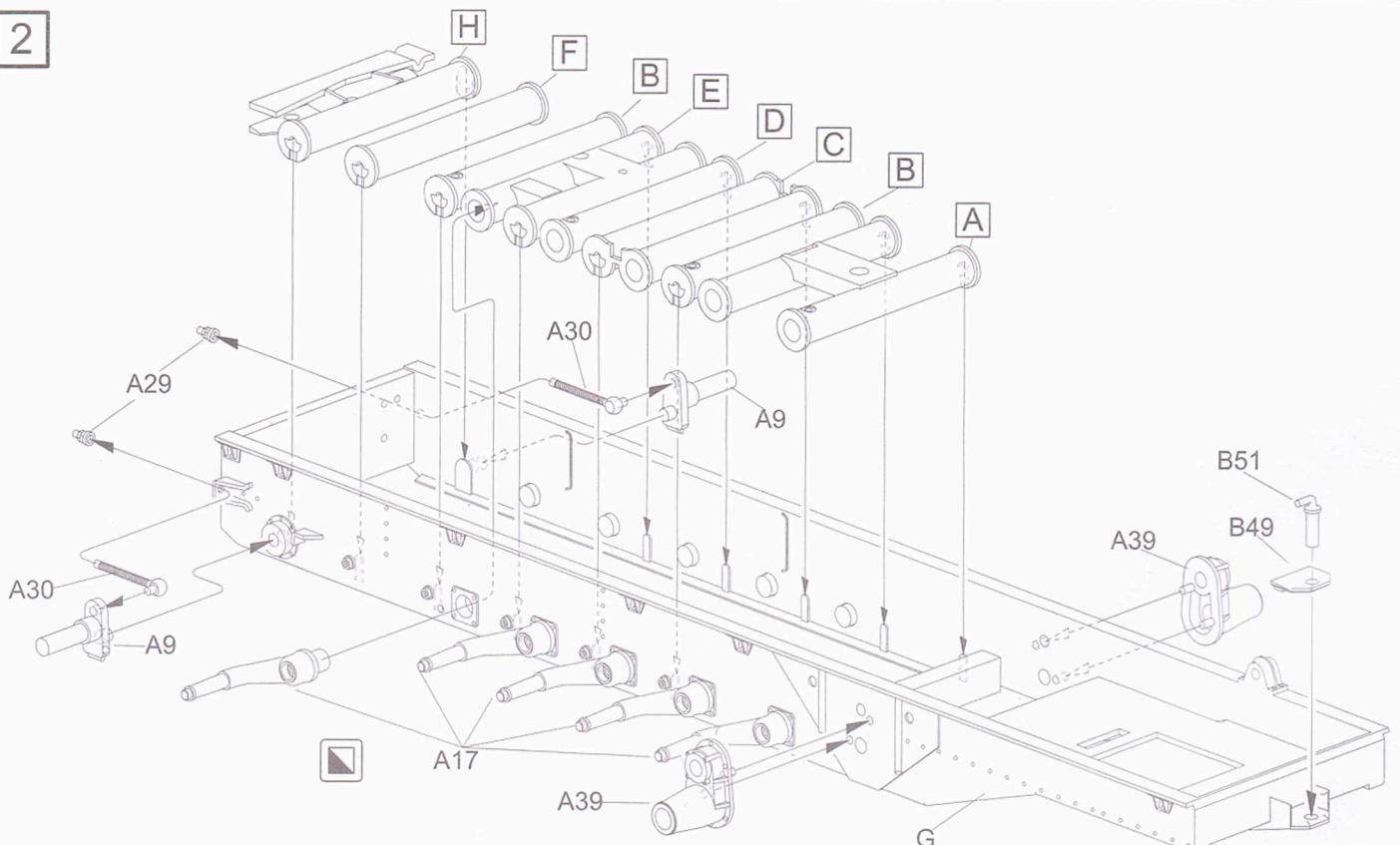
Be careful
注意

注意して下さい

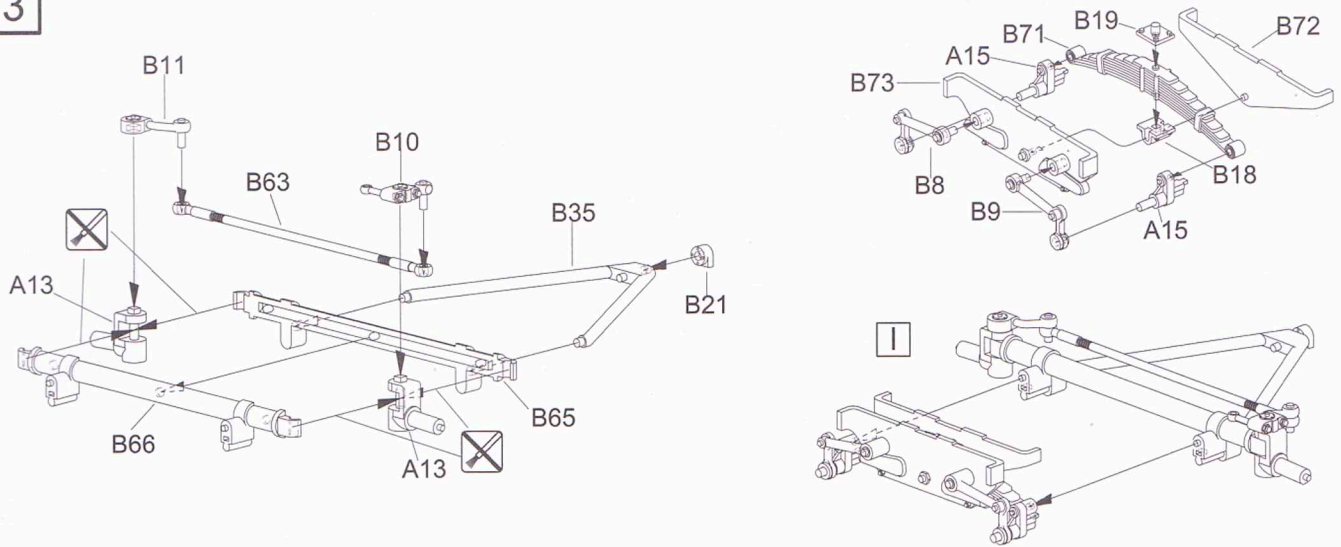
1



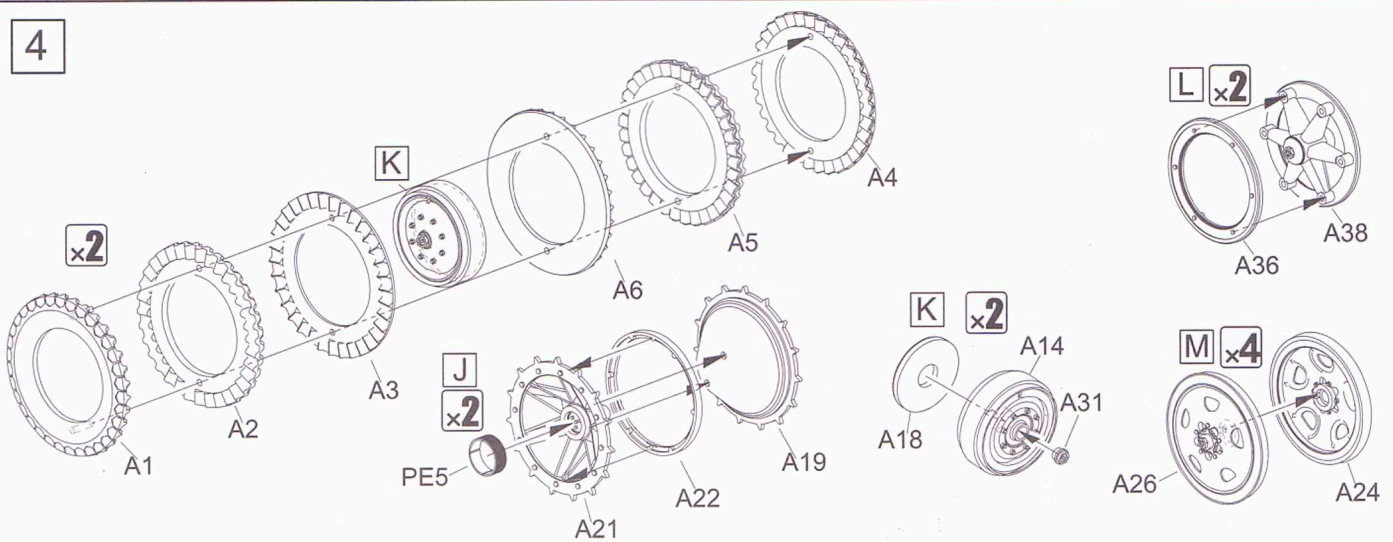
2



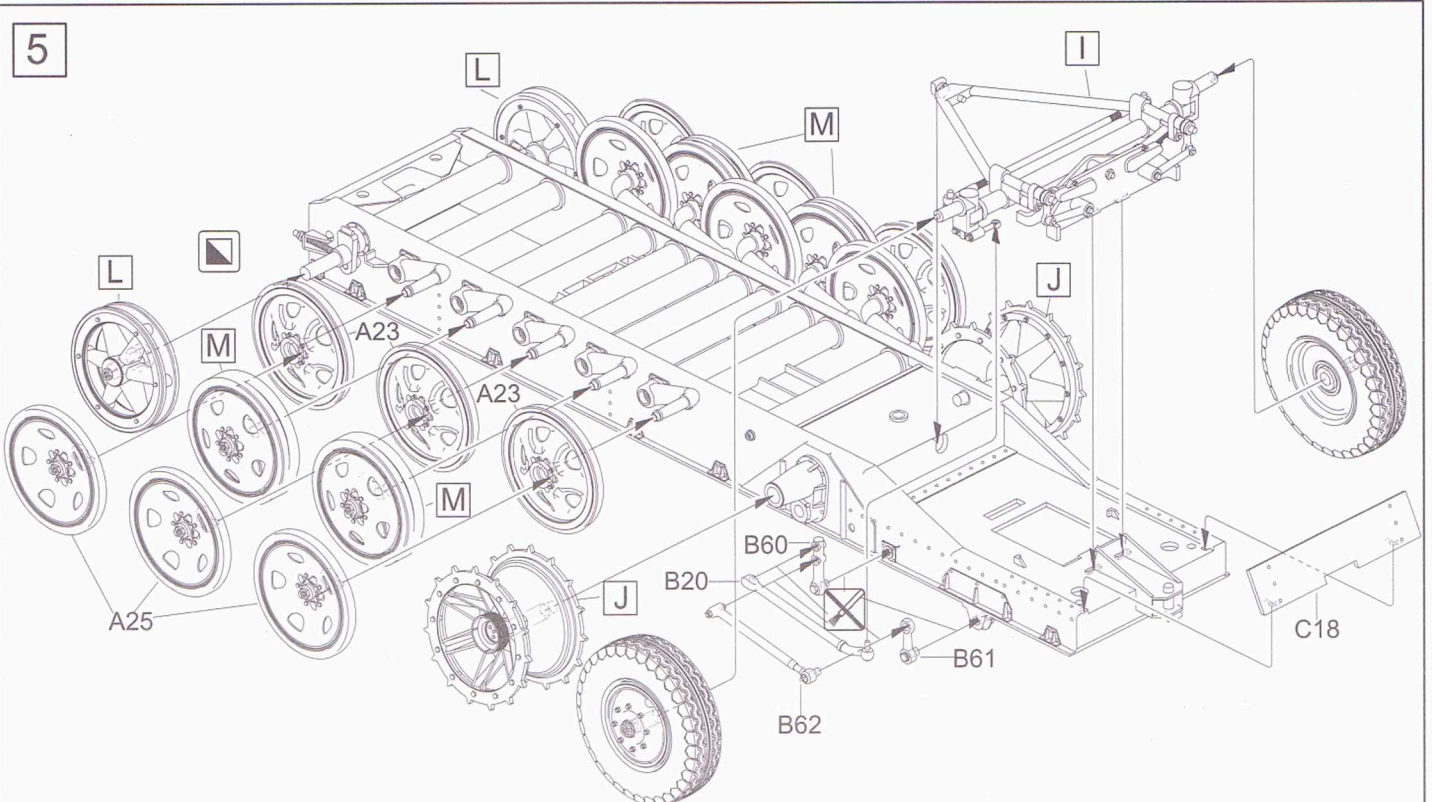
3



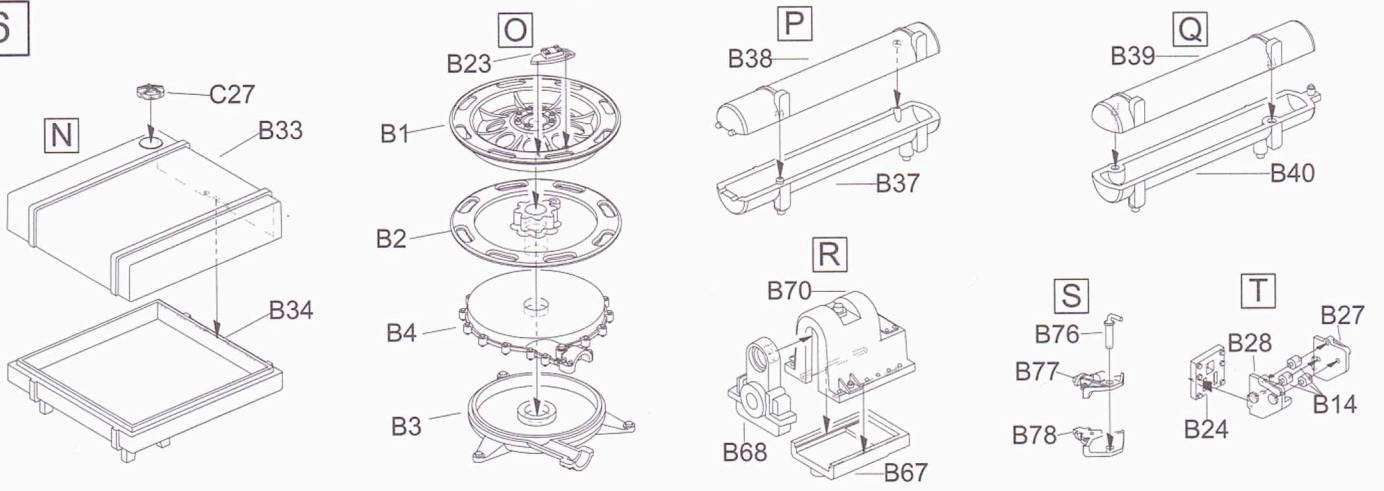
4



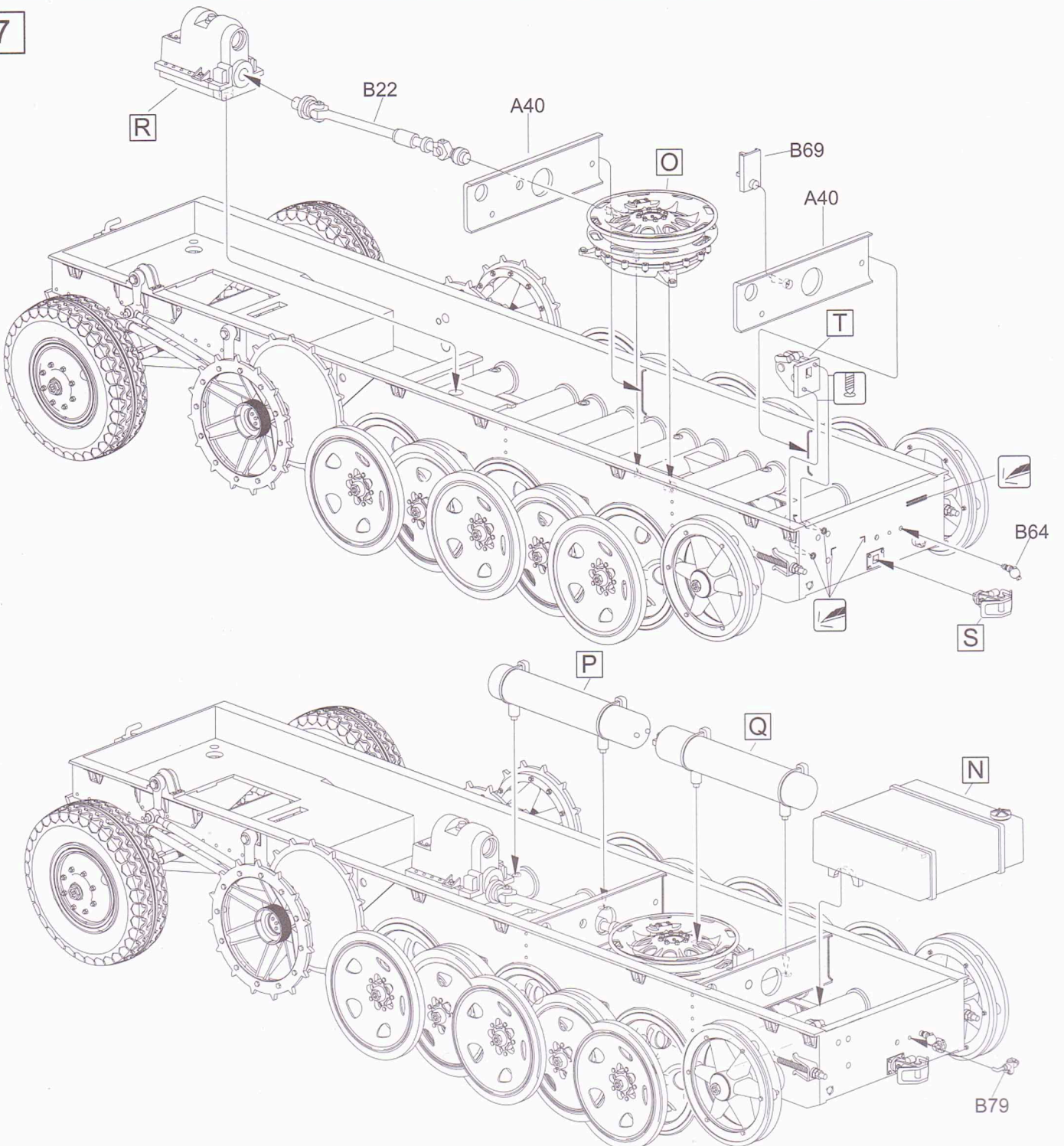
5



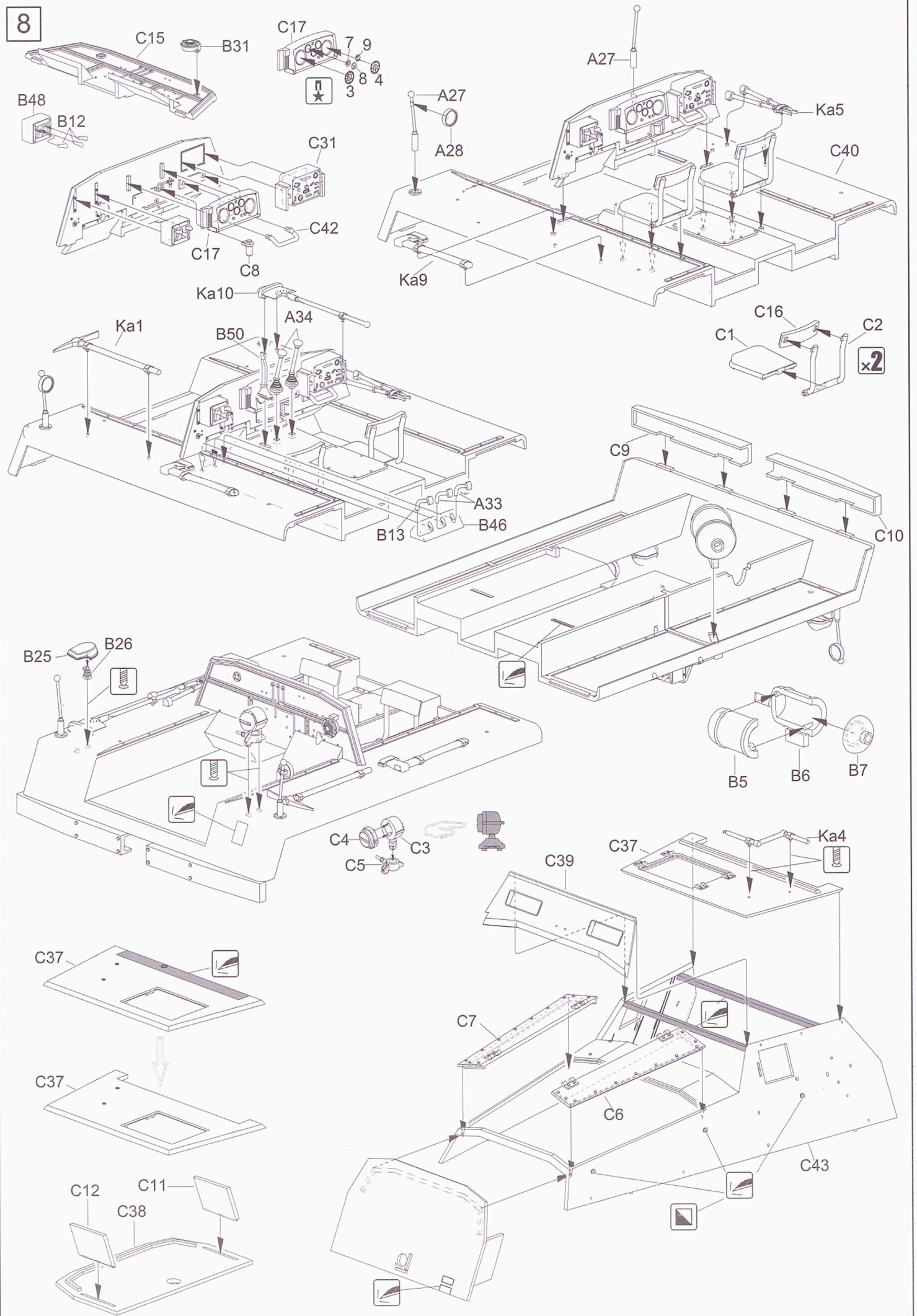
6



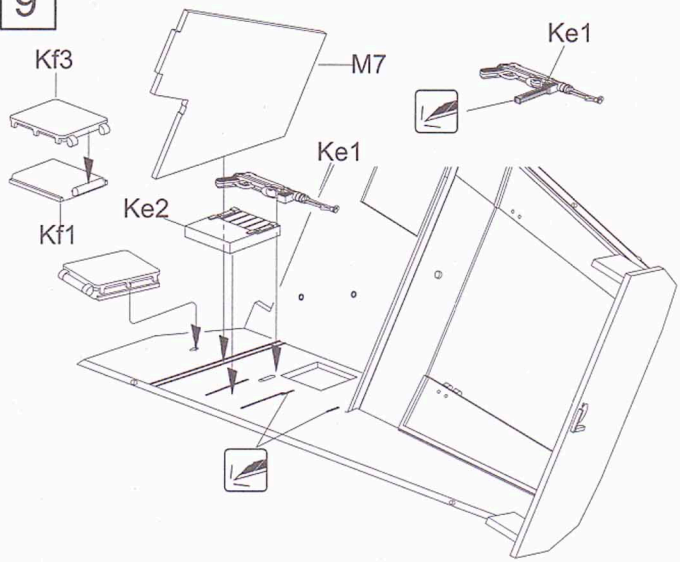
7



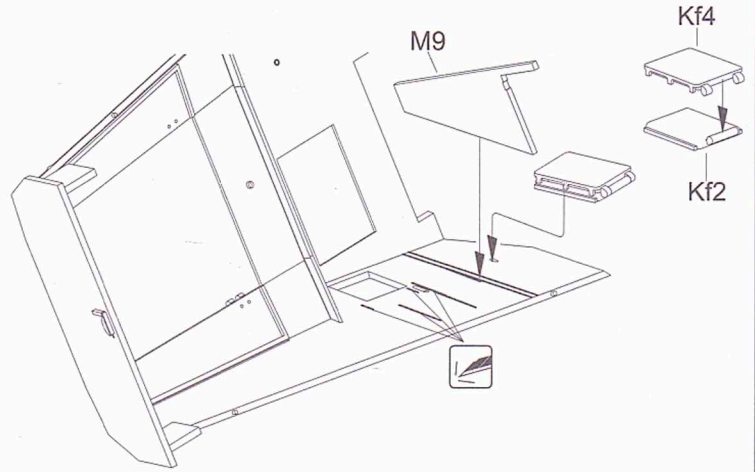
8



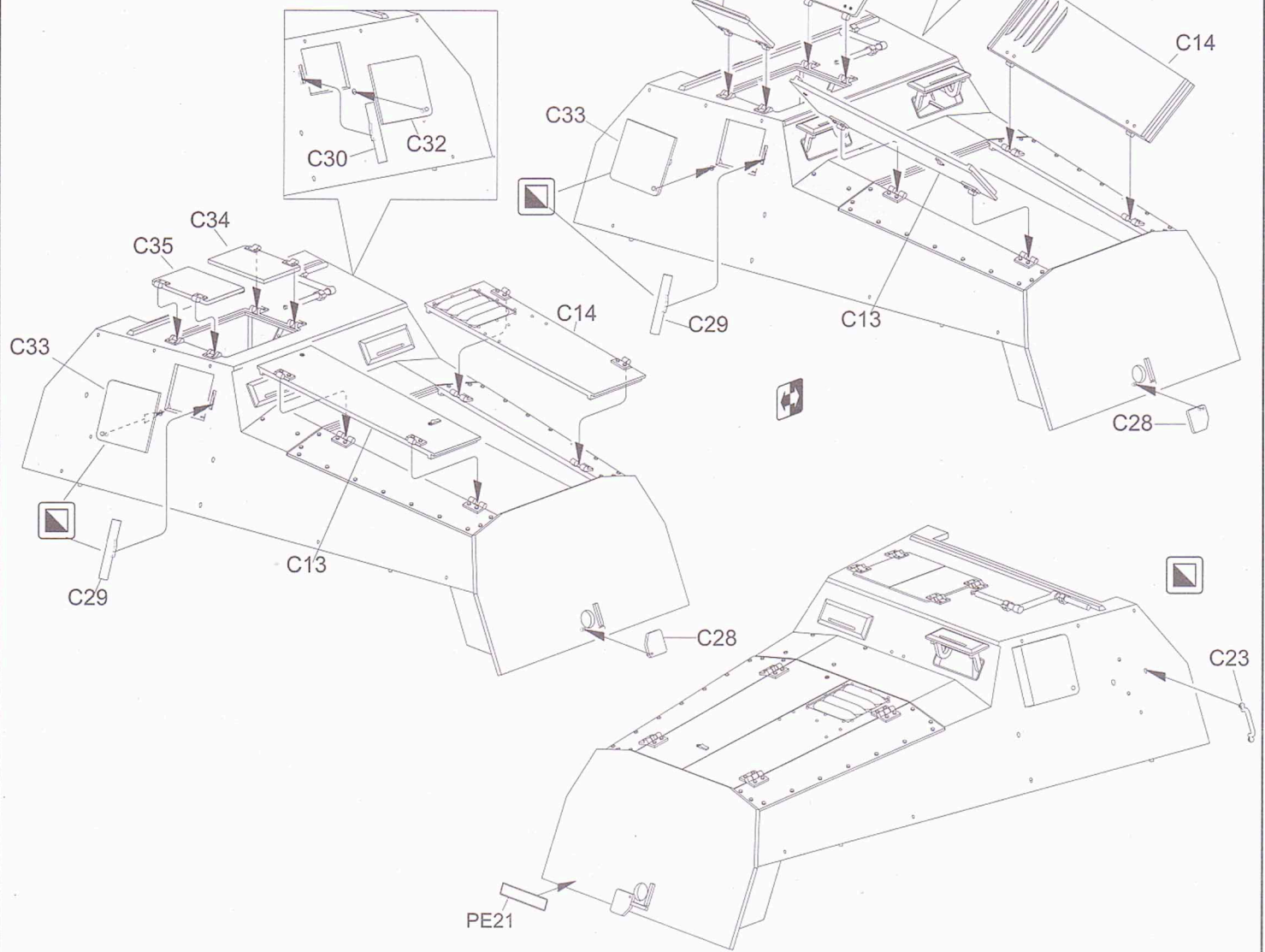
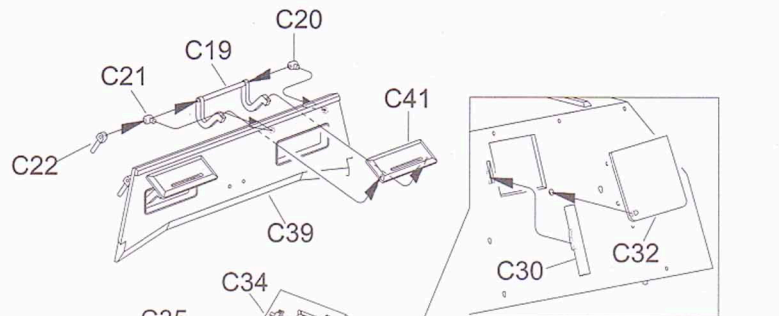
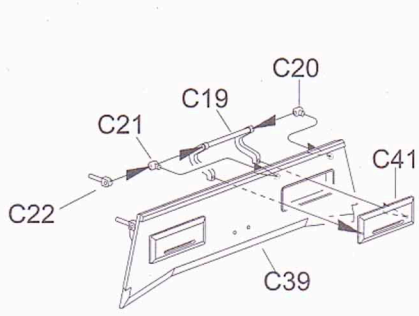
9

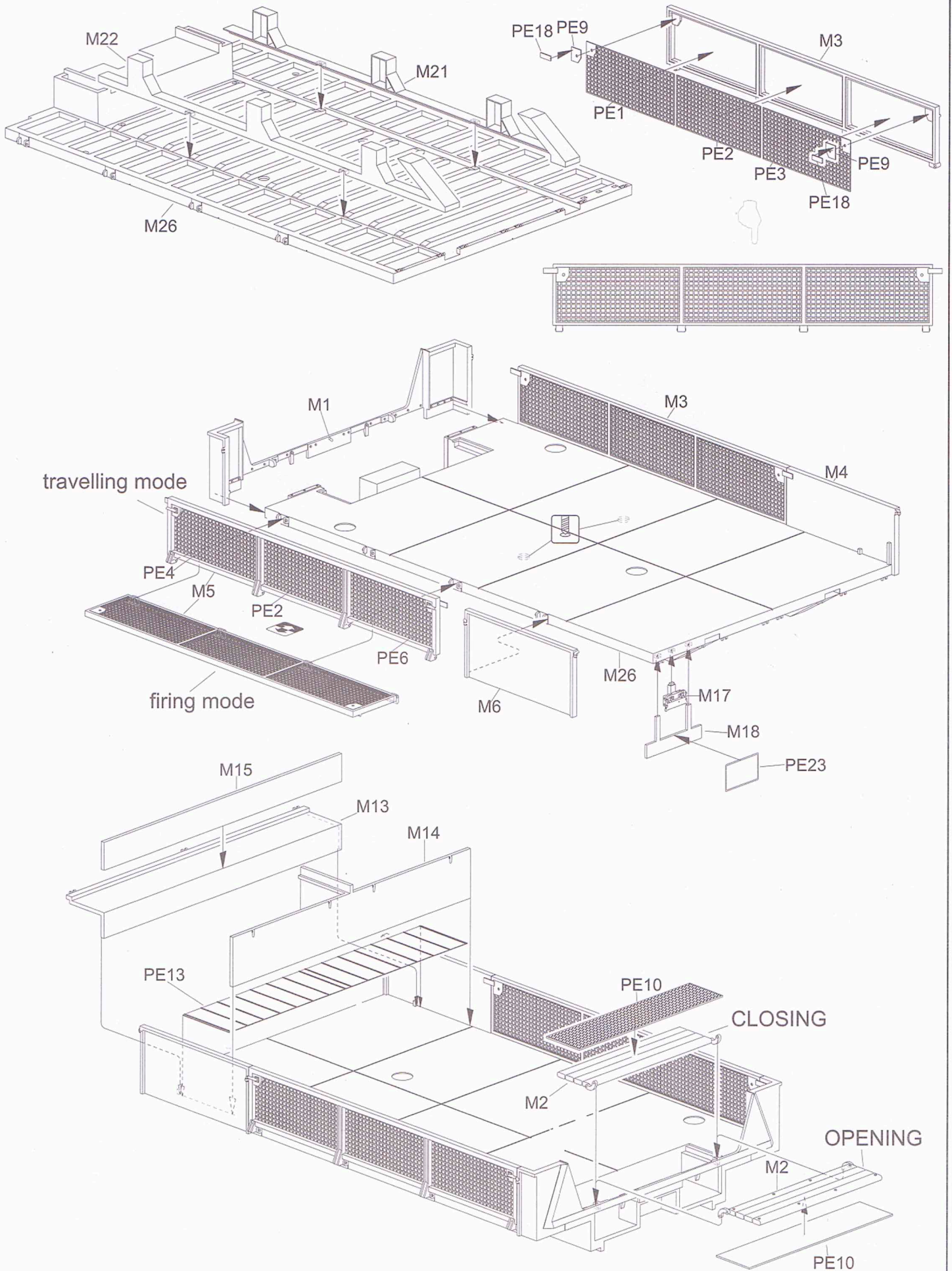


CLOSING

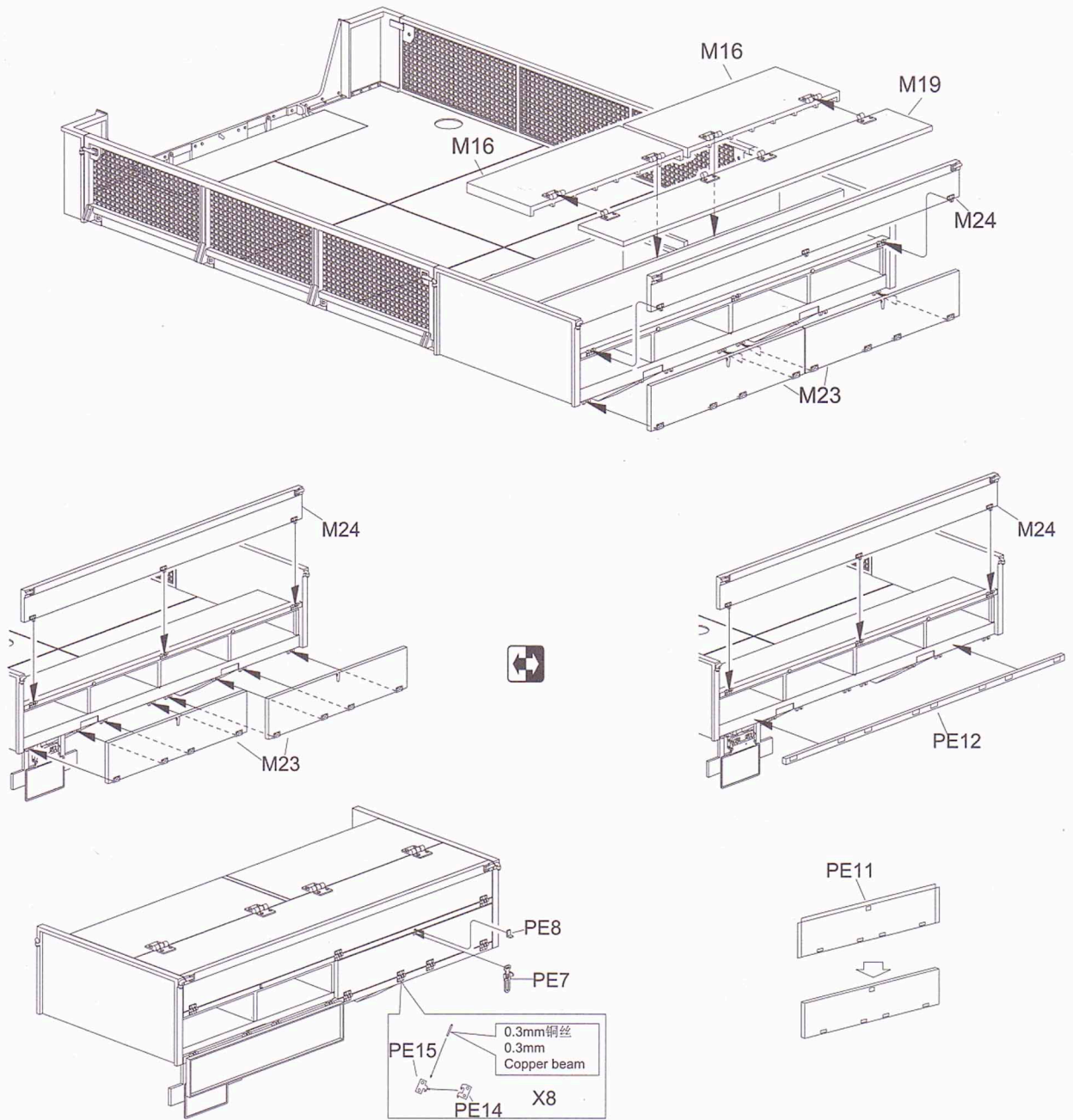


OPENING

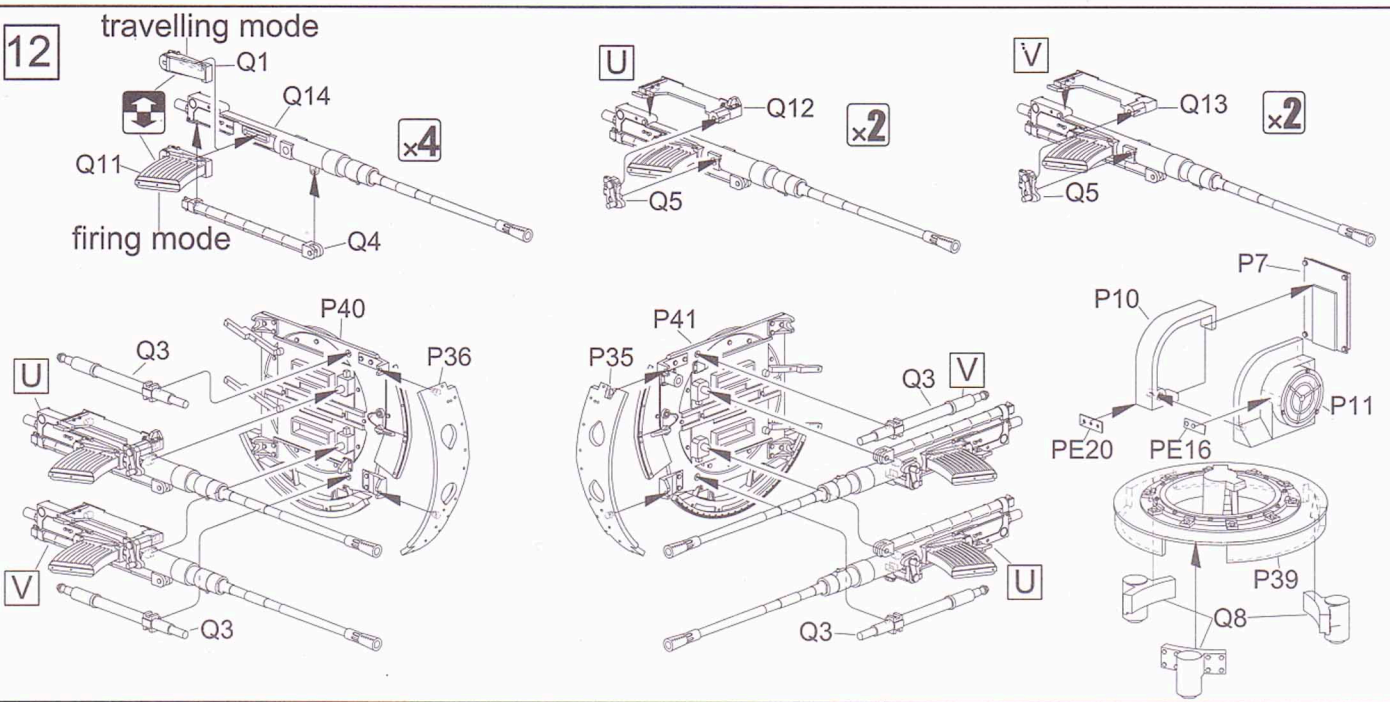


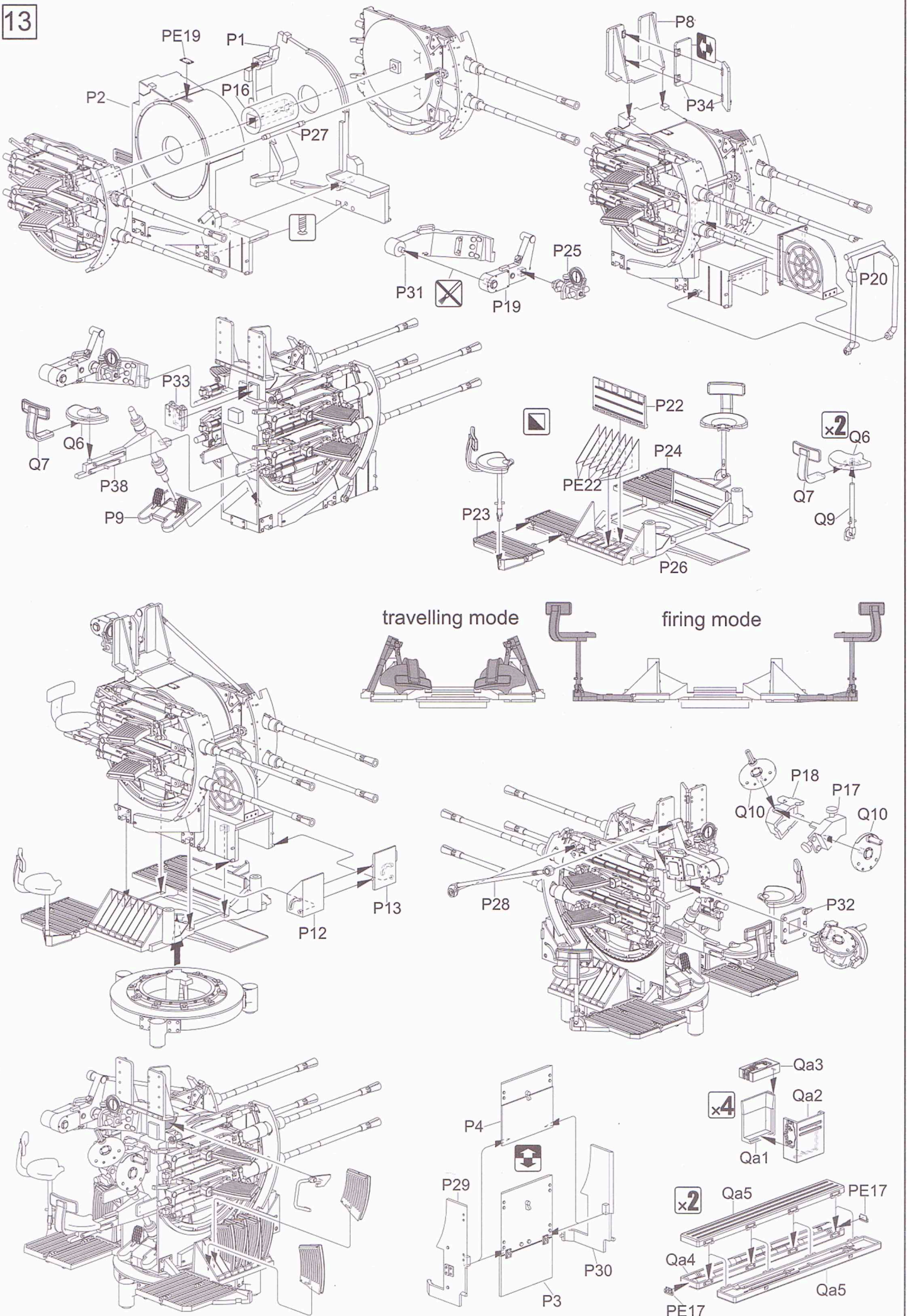


11



12

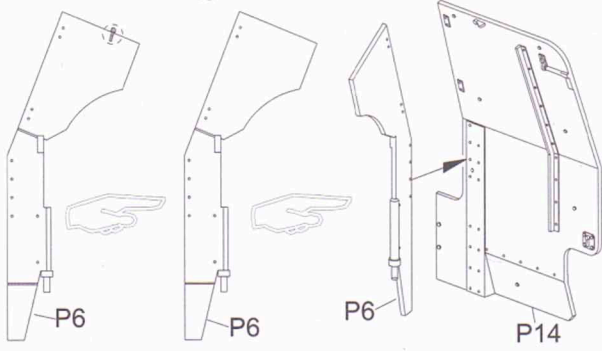




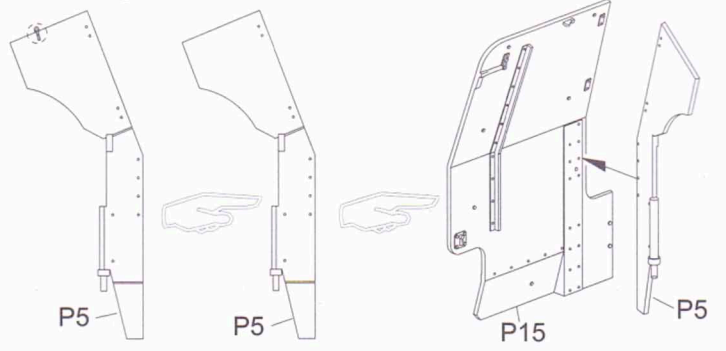
14



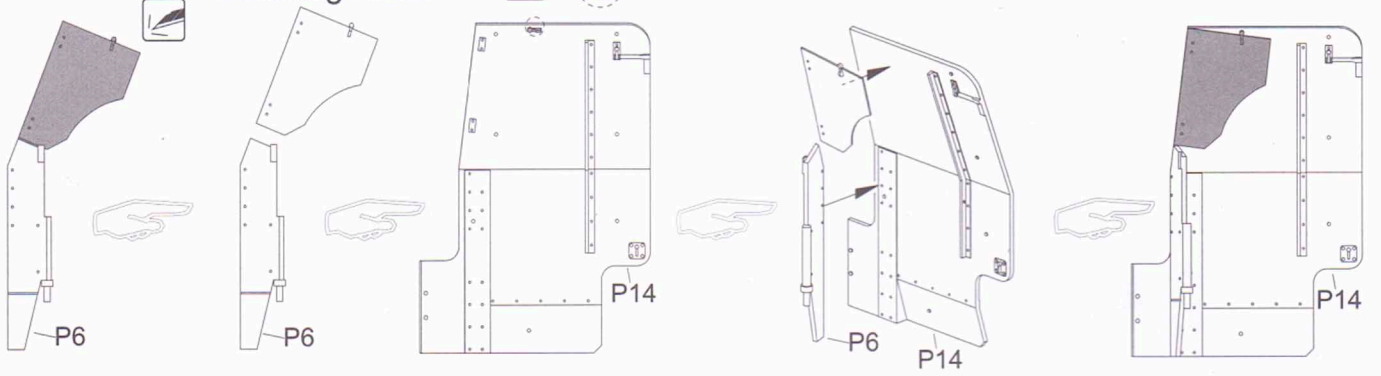
firing mode



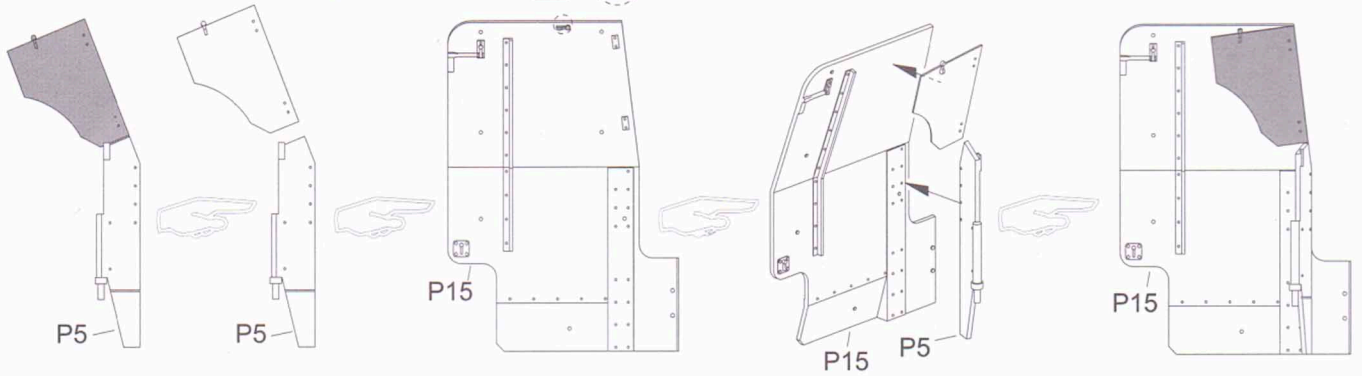
firing mode



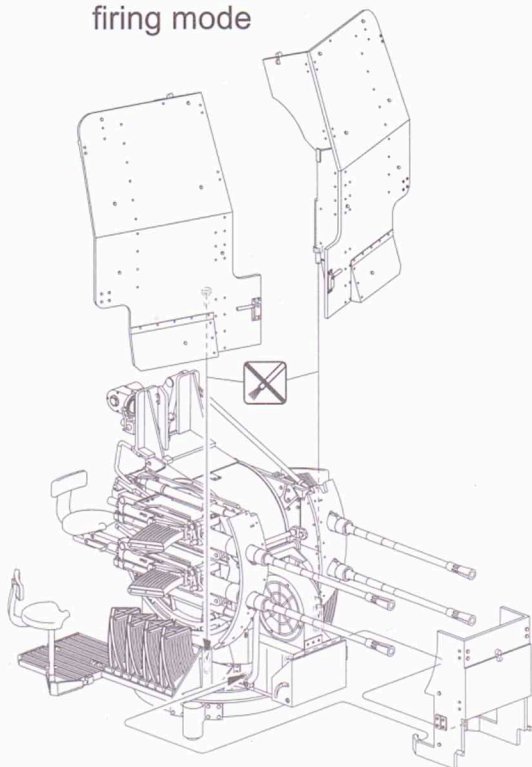
travelling mode



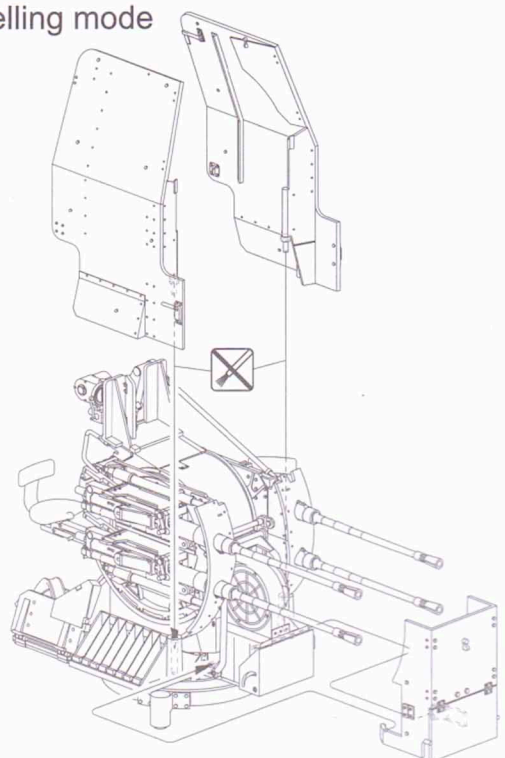
travelling mode

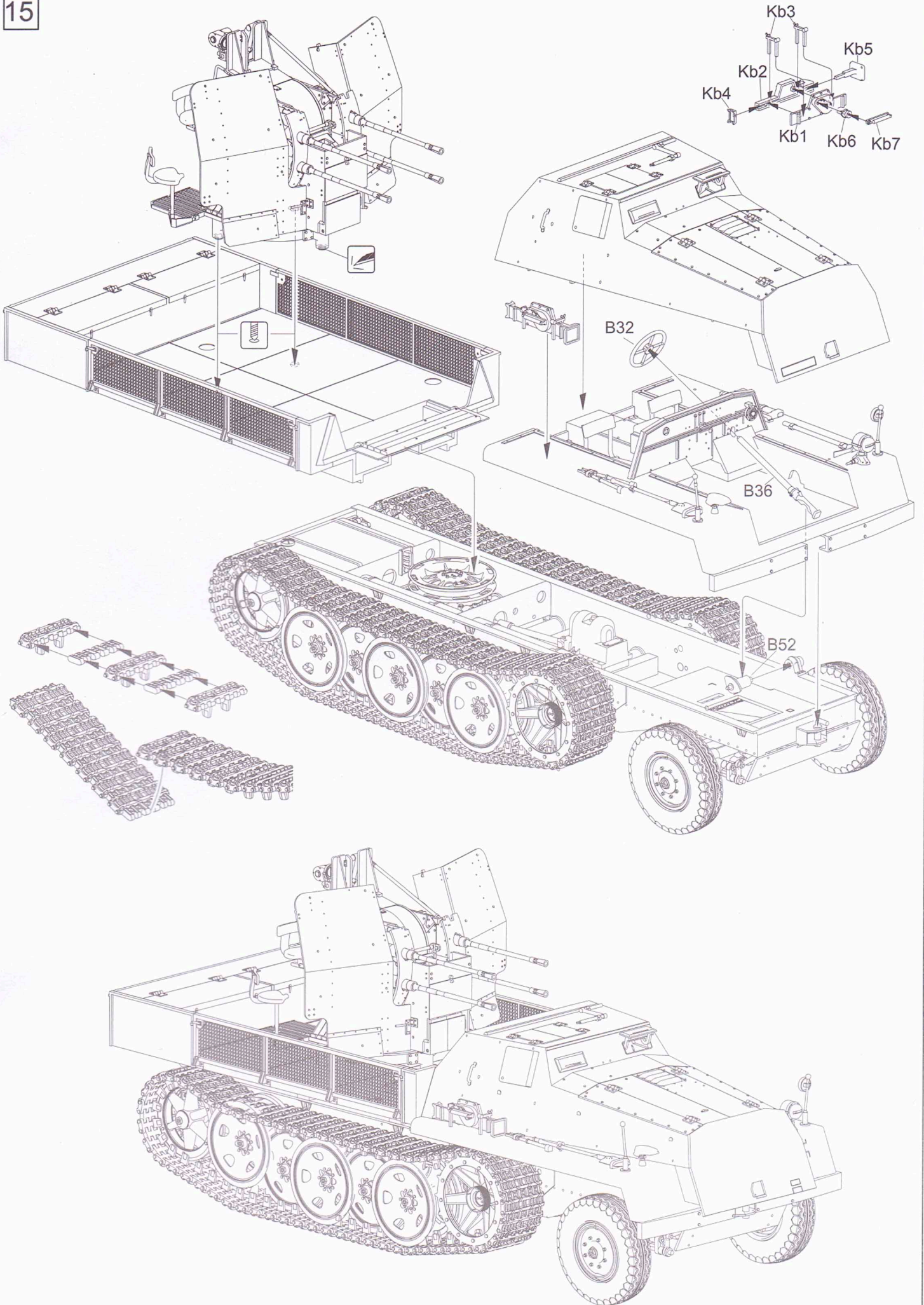


firing mode



travelling mode







www.lionroar.net
www.lionroarmodel.cn



LionRoar[®]

SHANGHAI LION ROAR ART MODEL CO., LTD
上海狮瑞工艺模型有限公司

MADE IN CHINA