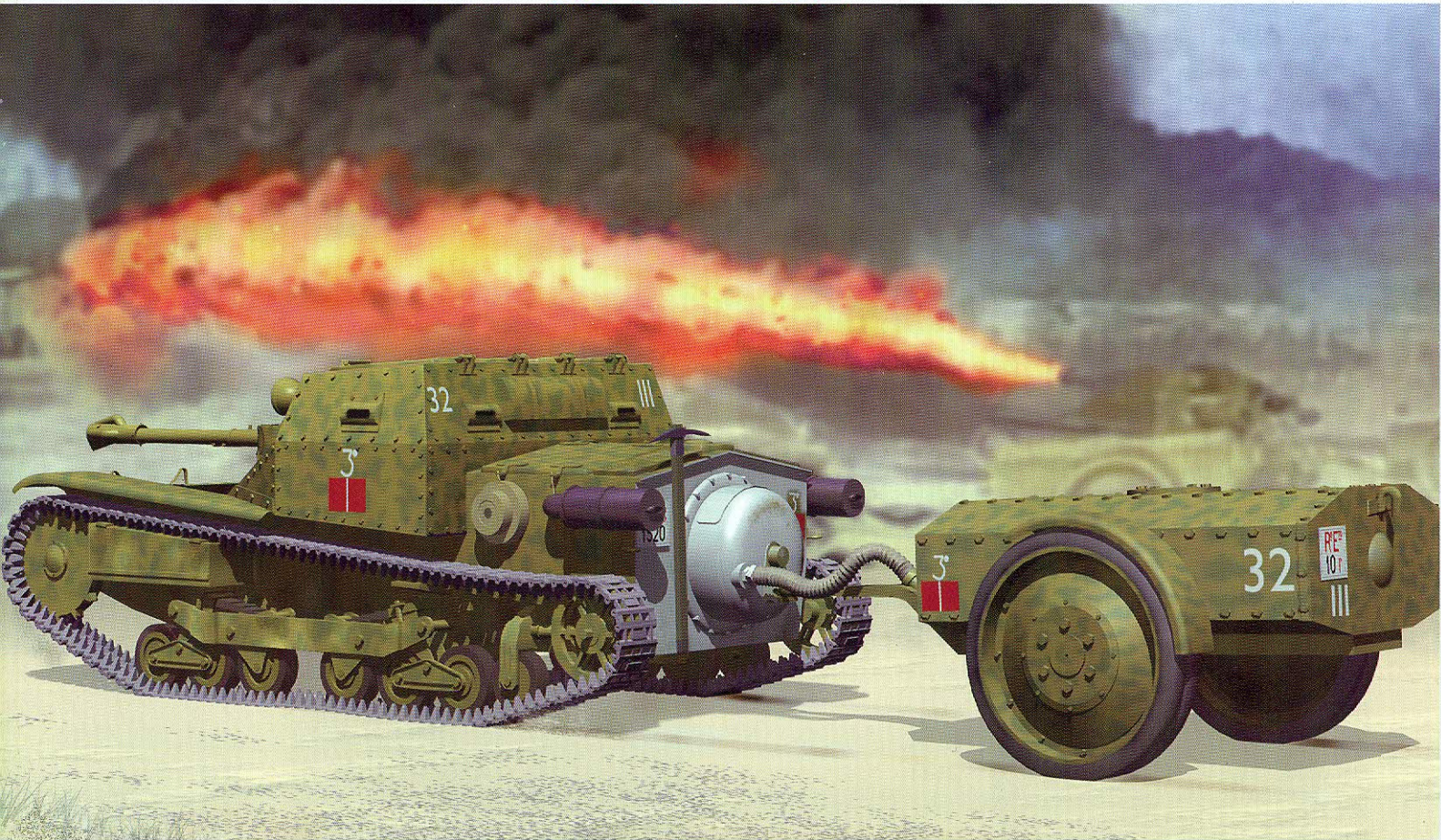


# CV3/35 LANCIAFIAMME TANKETTE

## 1/35 SCALE

### CV3/35 喷火小坦克



The L3/35 was developed from imported British Carden-Lloyd Mark VIs (designated CV29 in Italian service, CV stood for Carro Veloce, "fast tank"). It was built as the CV-33 in 1933, but was retrofitted as the CV-35 in 1935 and renamed the L3/35 in 1938. The L3/35 was a lightly armored two-man vehicle typically armed with two tandem machine guns. The differences between the L3/33 and the L3/35 were not many. About 2500 L3 tankettes were built in different models and variants. The L3s tankettes were sold to Afghanistan, Albania, Austria, Bolivia, Brazil, Bulgaria, China, Greece, Hungary, Iraq, and Nationalist Spain. The Italian developed a hooded long barrel flamethrower in place of the MG to L3/33 and L3/35 with a towed 110 gallon/500 liter fuel trailer. One platoon in each Italian tank company was equipped with the L3 Lf in North Africa.

Die L3/35 Tankette wurde aus importierten Carden-Lloyd Mk. VI Schleppern entwickelt. Diese aus England stammenden Fahrzeuge bezeichnete man im italienischen Heer als CV-29, wobei CV für „Carro veloce“ (schneller Panzer) stand. Ursprünglich 1933 als CV-33 gebaut, wurden sie ebenso wie 1935 die CV-35, umgerüstet und 1938 in L3/35 umbenannt. Der L3/35 war leicht gepanzert, hatte zwei Mann Besatzung und ein Zwilling-MG. Die Typen L3/33 und L3/35 unterschieden sich nur geringfügig. Ungefähr 2500 L3 Tanketten wurden in verschiedenen Ausführungen produziert. Zwanzig L3/33 wurden nach China verkauft. Weitere Abnehmer waren Afghanistan, Albanien, Österreich, Bolivien, Brasilien, Bulgarien, Griechenland, Ungarn, Irak und Spanien. Der Italiener entwickelten einen mit Kapuze langen Fass-Flammenwerfer anstatt des Magnesiums zu L3/33 und zu L3/35 mit einem geschleppten Kraftstoffanhänger des Liters 110 gallon/500. Ein Zug in jeder italienischen Behälterfirma wurde mit dem L3 LF ausgerüstet. verwendet in Nordafrika. In die L3/33 und L3/35 installierten die Italiener einen abgedeckten langläufigen Flammenwerfer anstelle der MGs und hängten ein 500 Liter Flammöl Anhänger hinter das Fahrzeug. Jede italienische Panzerkompanie in Nordafrika war mit einem Zug L3 Lf ausgerüstet.

TRANSLATION © Michael Knoblich ACADEMY EURO

意大利之菲亚特 / 安沙度公司在 20 世纪 30 年代仿制了英国的卡登诺 Mk.VI 小战车名为 CV29。到了 1933 年对 CV29 整体进行了重大改良，并命名为 CV33，成为意军机械化部队之骨干。其后 CV33 曾进行了多次改良，这一系列统称为 L3。1935 年改良推出之 L3 则命名为 CV35。CV33 与 CV35 的装备与体积基本相同，只是外观特征有些不同。CV35 车身装甲为铆钉接合式。L3 系列总共生产了大约 2,500 部，曾外销至许多国家，包括欧洲之阿尔巴尼亚、奥地利、西班牙、保加利亚、匈牙利及希腊。亚洲之中国、阿富汗及伊拉克。南美国家有巴西及玻利维亚。在 L3/33 及 L3/35 的基础上，意大利人在 MG 位置改装一具粗长的火焰喷射器及一辆 110 gallon/500 公升燃料拖车。在北非，每个意大利坦克旅都装备一排这种 L3 喷火小坦克。



# ILLUSTRATION 图示说明:

## CORRECT METHOD FOR APPLYING DECALS : HINWEISE ZUM ANBRINGEN DER DECALS

### 正确贴水贴纸的方法:

1. Clean model parts surface with wet cloth. Entsprechende Stellen am Modell feucht reinigen.  
将需要贴水贴之部位表面擦干净。
2. Cut out the decal parts and dip them in cold water for 15 ~20 seconds. Decal ausschneiden und für 15-20 Sek. ins Wasser legen.  
将所需之贴纸剪下泡在清水里约15至20秒。
3. Place it on correct position of the model kit. Decal an der richtigen Stelle auflegen.  
将湿透之贴纸取出置放于正确之位置旁。
4. Slide off the decal from the base paper on to the model kit surface with a cotton stick. Decal mit Wattestäbchen festhalten und Papier darunter wegziehen.  
用棉花棒轻推贴纸表面使其从底纸滑出至模型表面之正确位置。
5. When decal get dry then complete. Decal mit Papiertuch andrücken und trocknen.  
待其自然干透后即完成。

## ICON INSTRUCTION: 图标说明:



Open Hole  
Loch bohren  
钻孔



Remove  
Abtrennen  
切除



x2 2 Sets needed  
Vorgang wiederholen  
同样的制作二组



Bend  
Biegen  
曲折



Optional  
Auswahl  
可以选择采用



Apply Decal  
Decal anbringen  
贴水贴纸



Instant Glue For Metal  
Sekundenkleber verwenden  
瞬间接着剂,金属用



Fill Hole  
Verspachteln  
把孔填平



Do not cement  
Nicht kleben  
不用粘合

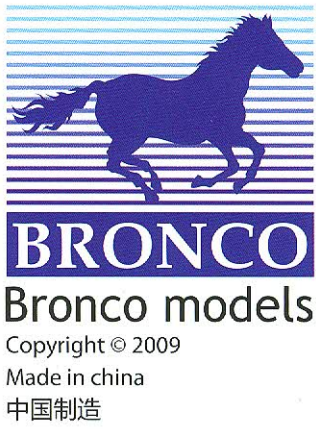
## COLOR SUGGESTION: FARB-TABELLE: 涂装指引:

Color 塗料表	Gunze Sangyo	Hobby Color	Humbrol	Tamiya
Steel Stahl 黑铁色	H-18	C-28	53	/
Red Brown Rotbraun 红啡色(FS30108)	/	/	/	/
Silver Silber 银色	H-8	J-8	11	X-11
Flat White Matt Weiss 消光白	H-11	C-62	34	XF-2
Dark Sand Dunk Sand 深沙色	/	/	/	/
Dark Green Dunkelgrün 深绿色	H-36	C-17	30	XF-61
Tyre Black Reifenschwarz 轮胎黑	H-77	C-137	85	/
Semi-Gloss Black Schwarz Seidenmatt 半光黑色	/	C-82	/	/
Gray Green grau Grün 灰绿色(FS34159)	/	/	/	/
White Weiss 白色	H-1	C-1	/	X-2
Flat Black Mattschwarz 消光黑	H-12	C-33	33	XF-1
Burnt Iron Metall brüniert 烧铁色	H-76	C-61	/	/
Wood Brown Holzbraun 木啡色	H-37	C-43	/	/
Red Rot 红色	H-3	C-3	19	X-7
Field Grey Feldgrau 原野灰	H-48	C-52	/	XF-65

## READ BEFORE ASSEMBLING: VOR ZUSAMMENBAU LESEN: 组装必读:

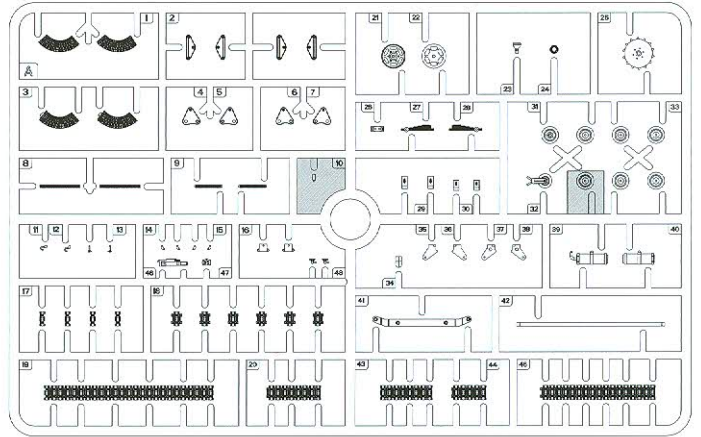
- Carefully Study instruction before assembling. Anleitung studieren und verständlich machen. 组装前请阅读清楚制作指引。
- Keep plastic model glue and tools away from children. Kleber, Farben, Werkzeuge und Plastiktüten von Kindern fernhalten. 胶水,油漆及工具勿让小孩接触。
- Do not use cement or paint near open flame or sparks. Kleber/Farbe nicht in Nähe von offenen Flammen. 胶水及油漆勿接触火种。
- Do not work in closed room. Nur in ausreichend belüfteten Räumen arbeiten. 勿在密封地方制作模型。



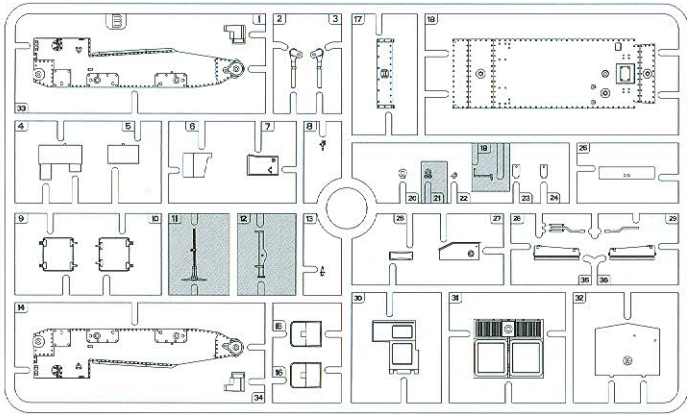


No use parts  
不要部件

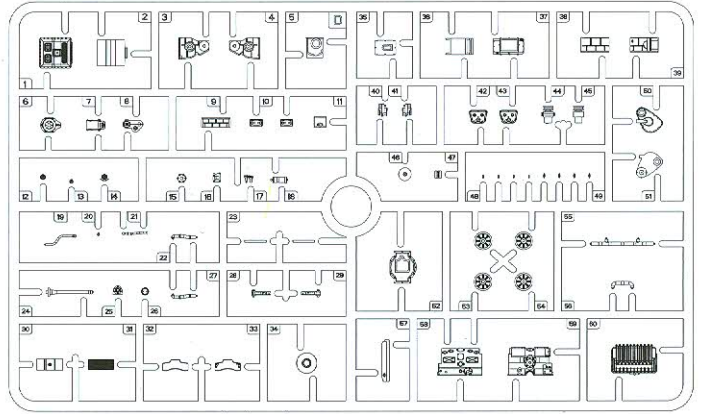
Ⓐ × 2



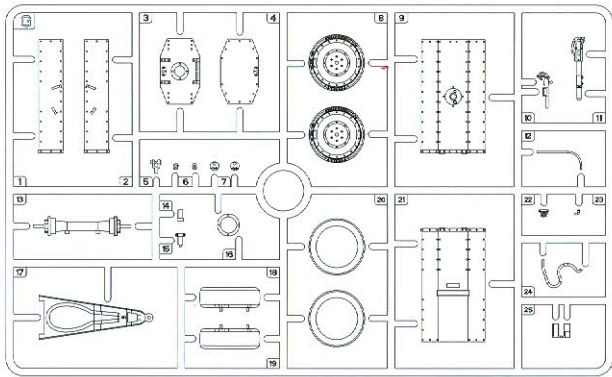
Ⓑ × 1



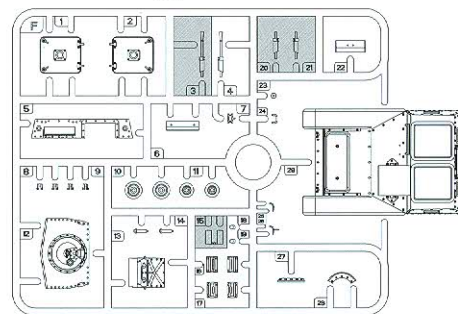
Ⓓ × 1



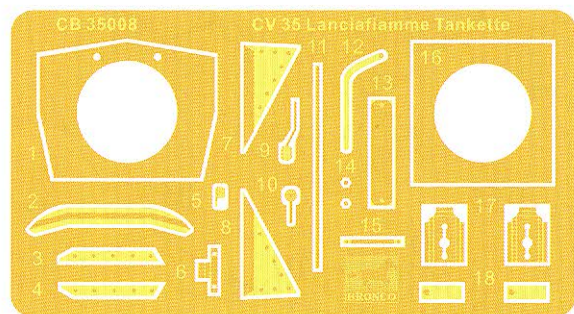
Ⓒ × 1



Ⓕ × 1



Ⓖ × 1



Ⓒ × 1



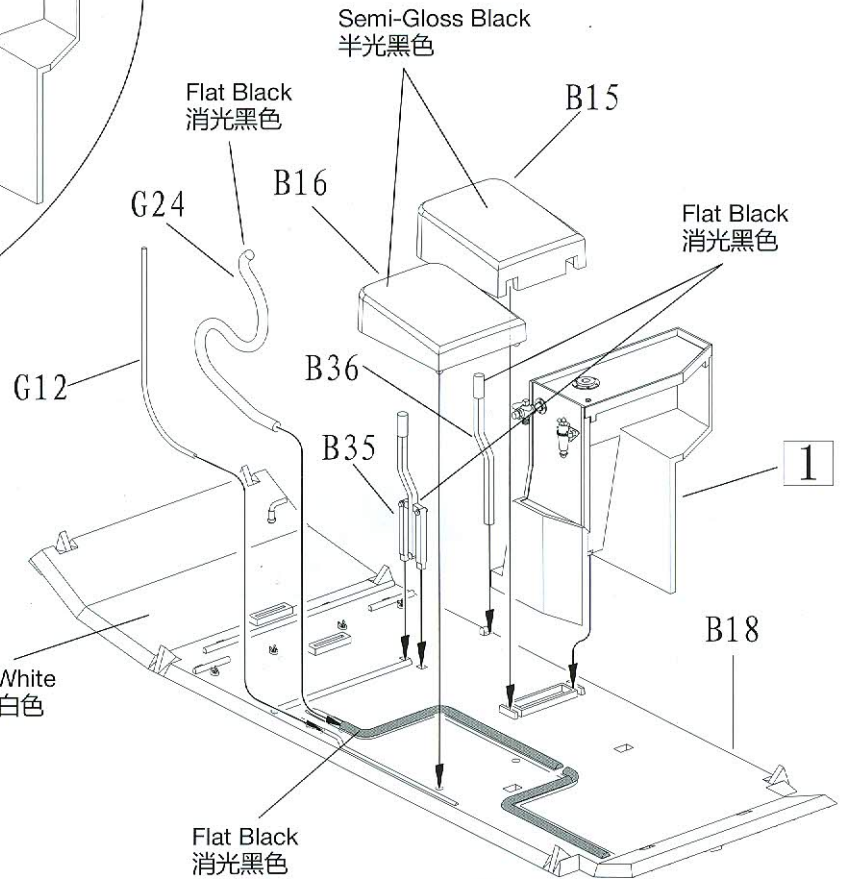
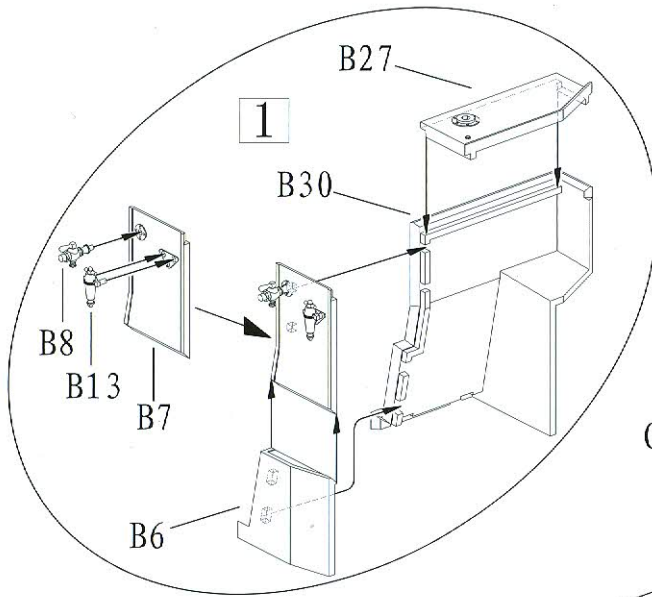
Ⓕ × 1



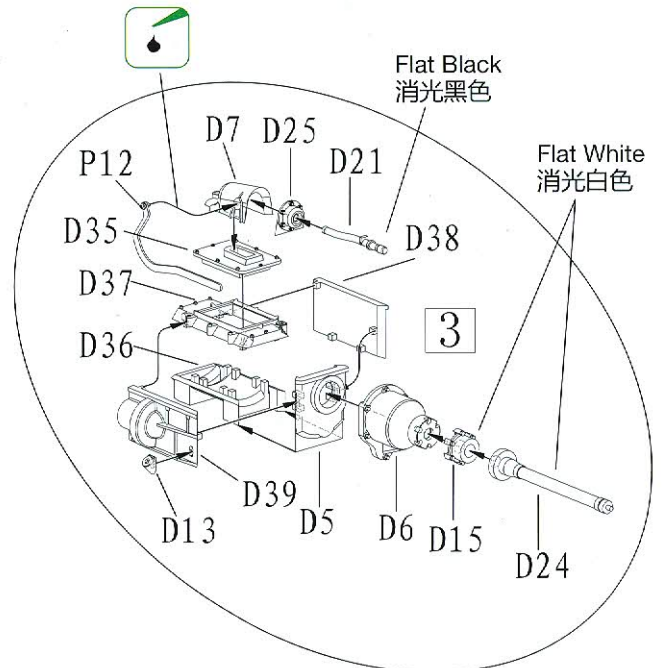
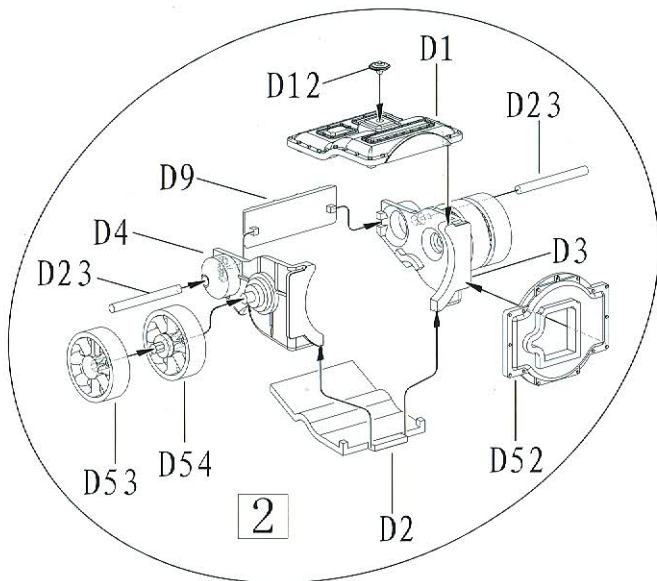
CB-35008

# ILLUSTRATION 图示说明:

1

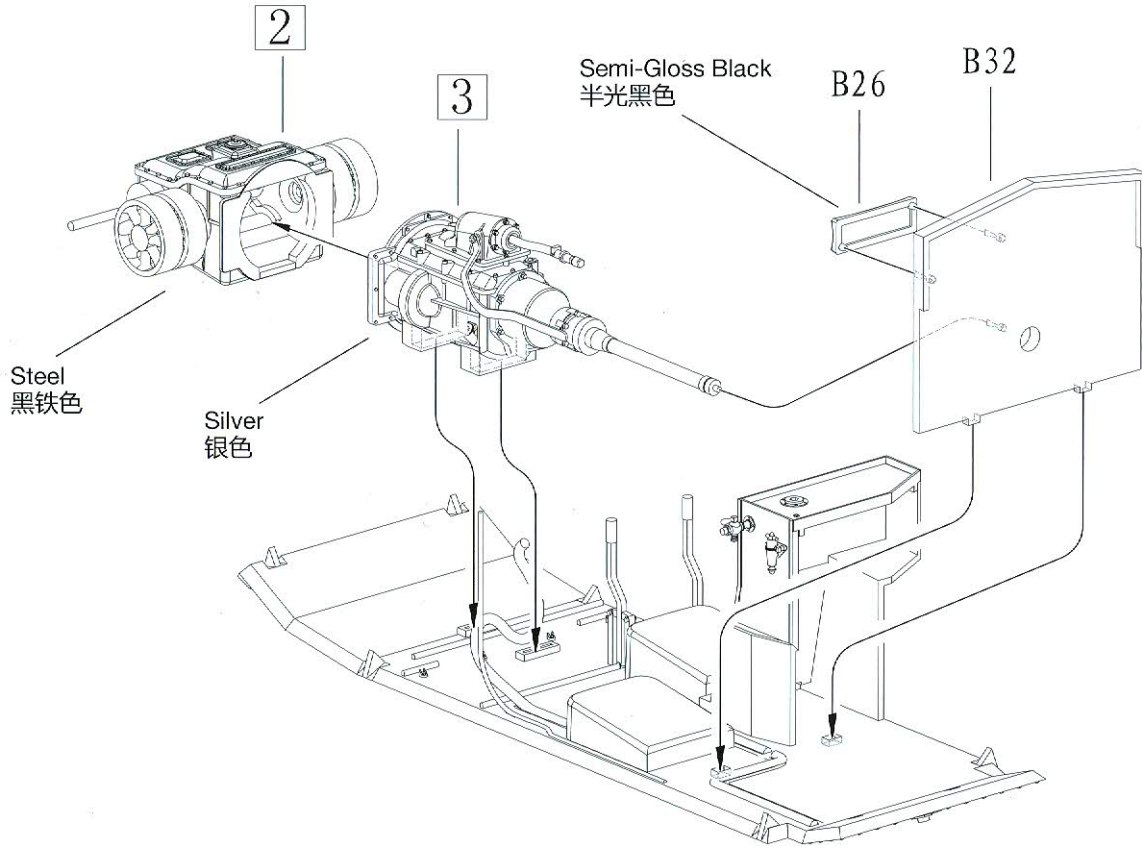


2

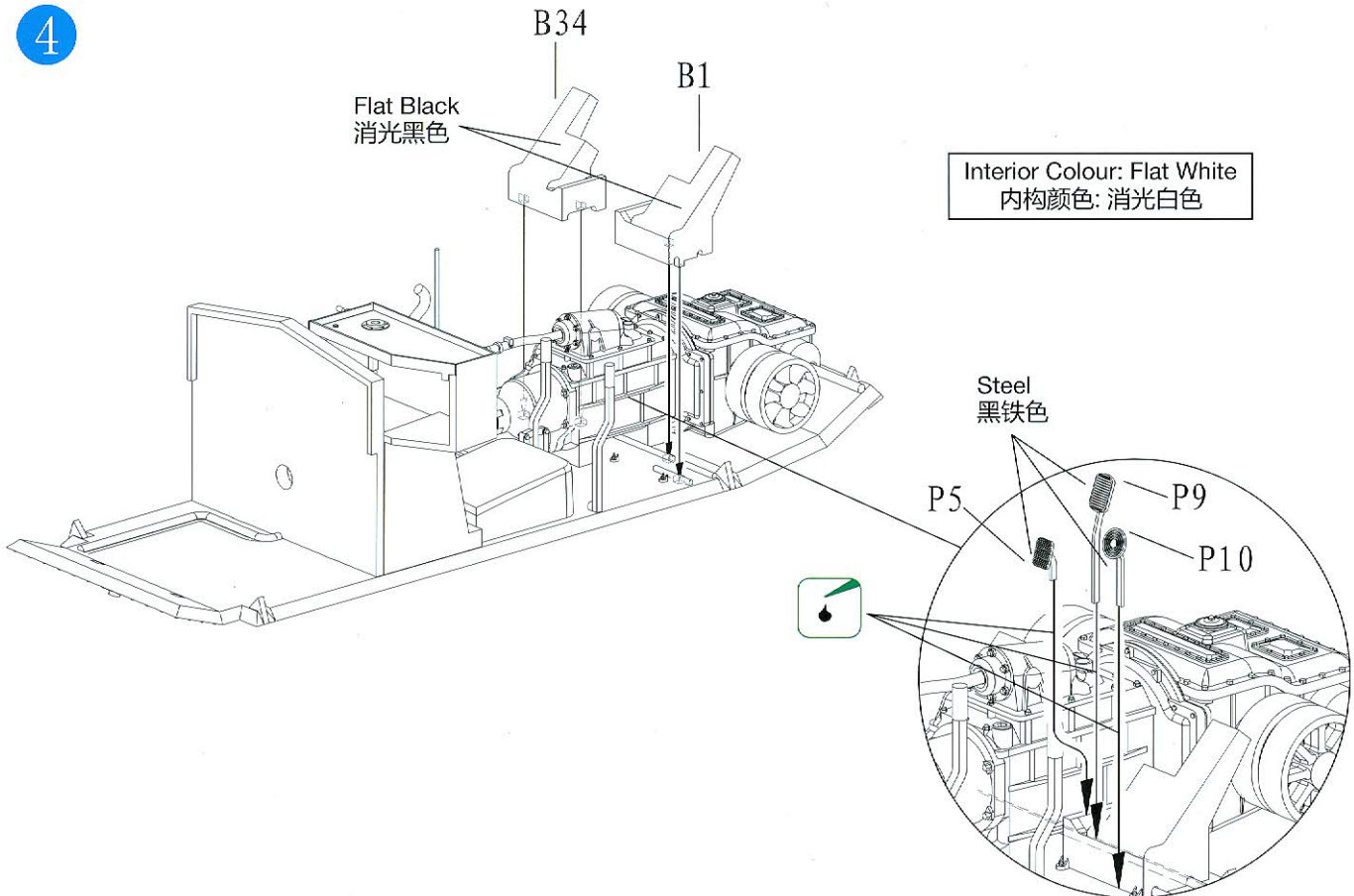




3



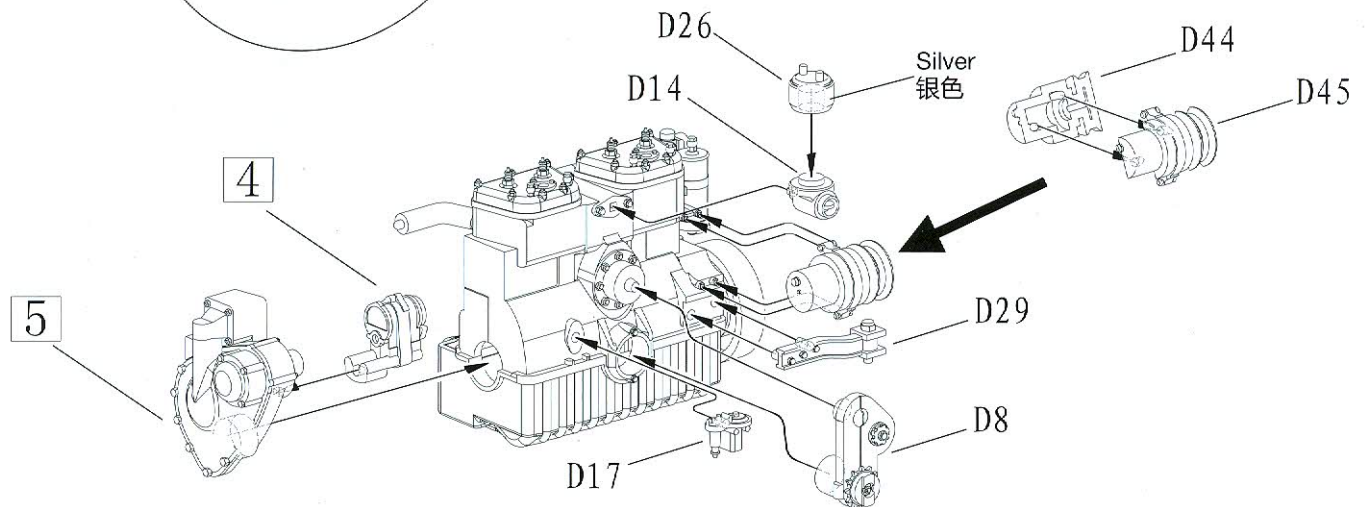
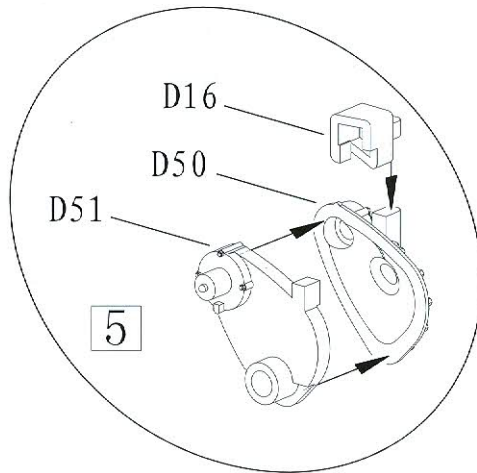
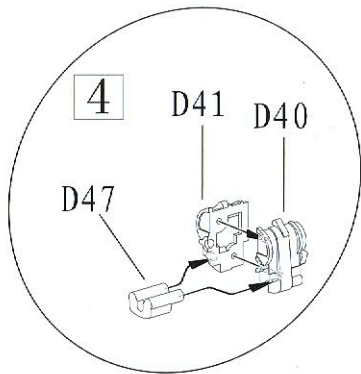
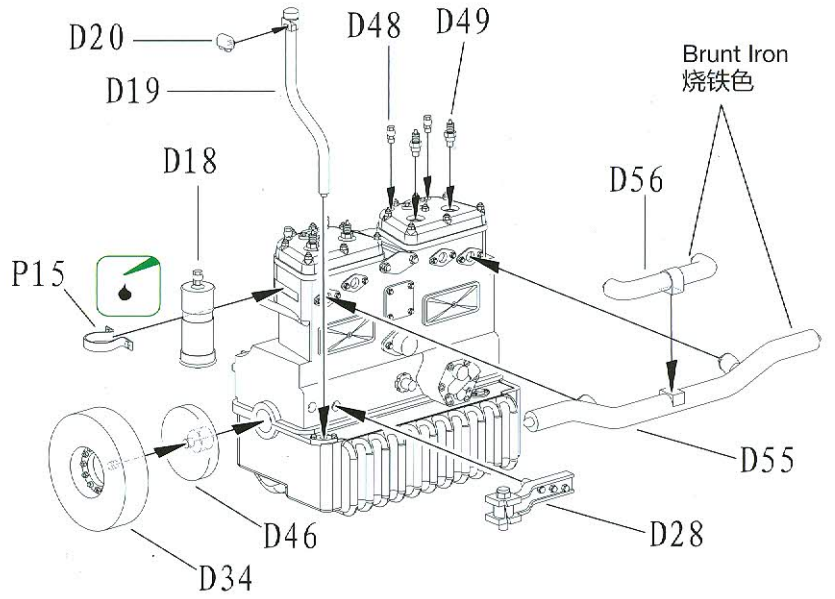
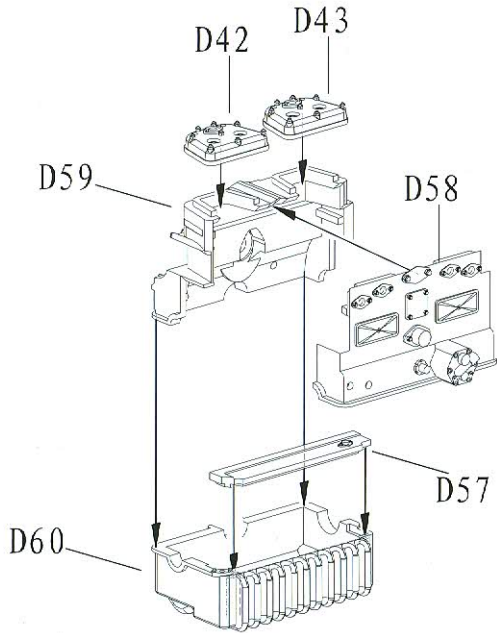
4



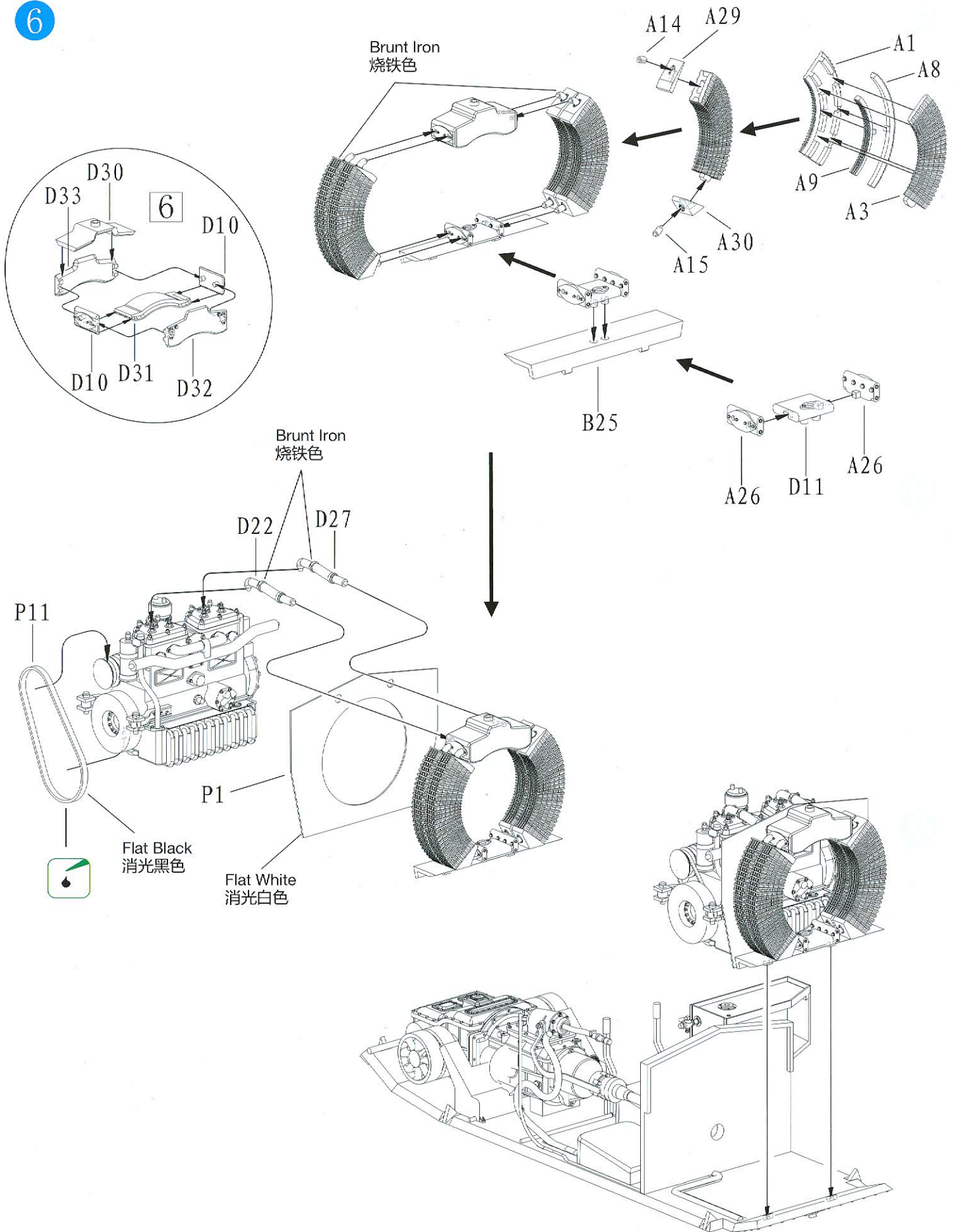
# ILLUSTRATION 图示说明:

5

Engine Colour : Steel  
发动机颜色: 黑铁色



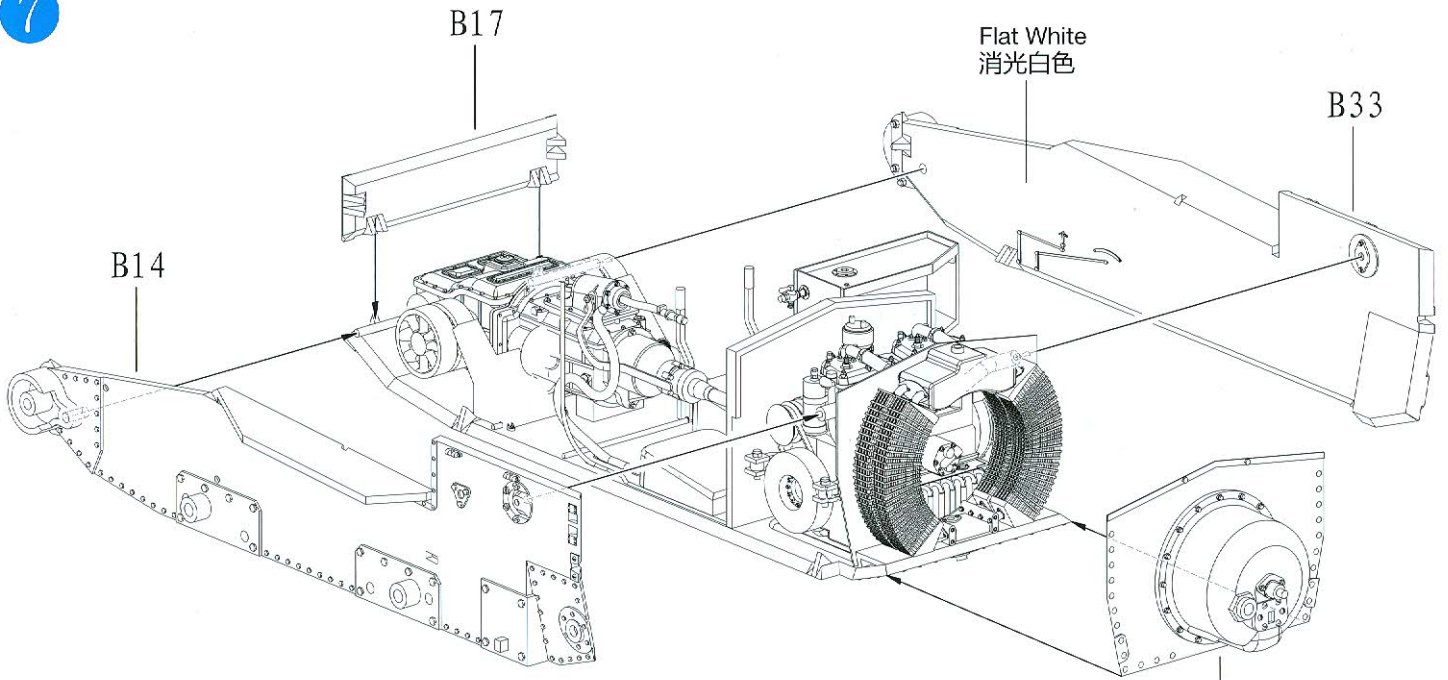
6



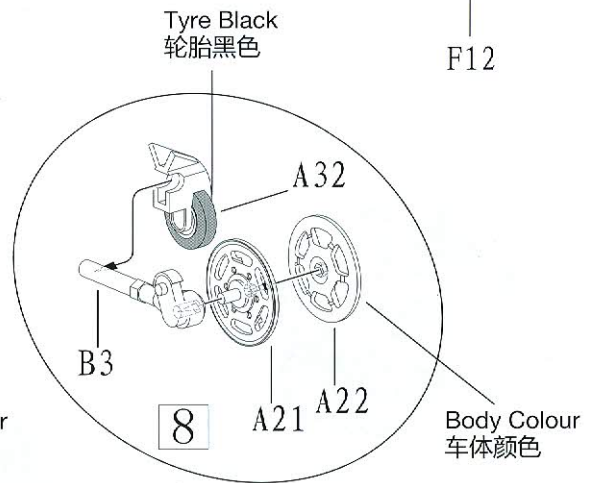
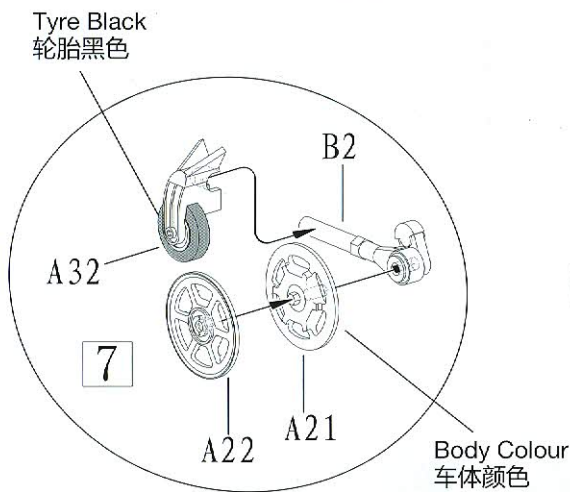


# ILLUSTRATION 图示说明：

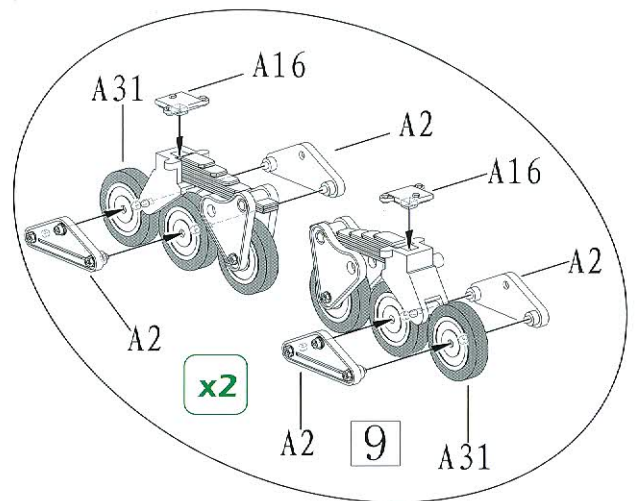
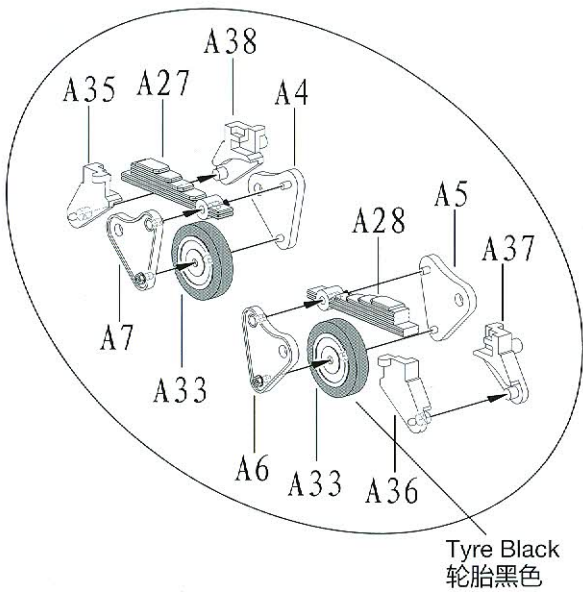
7



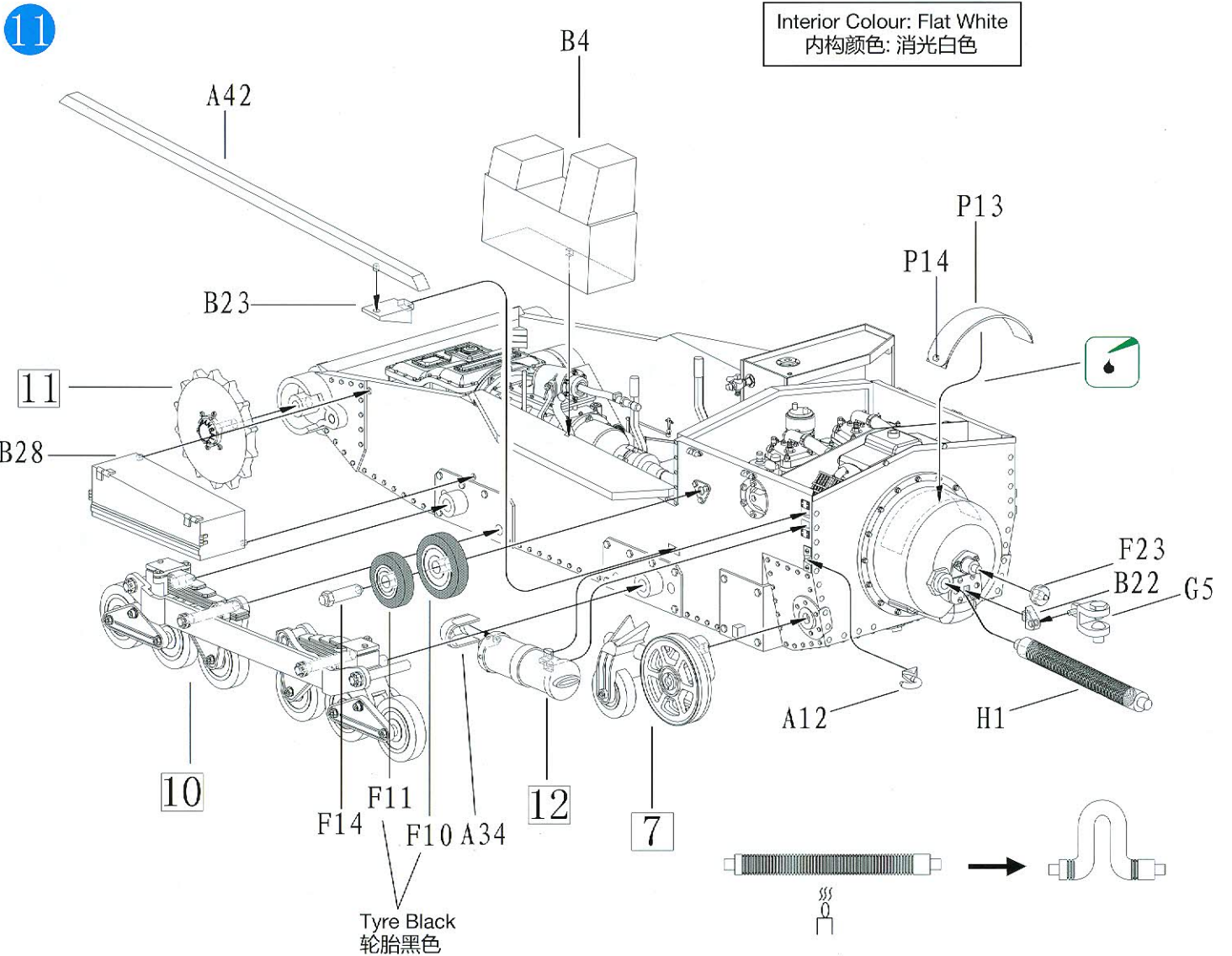
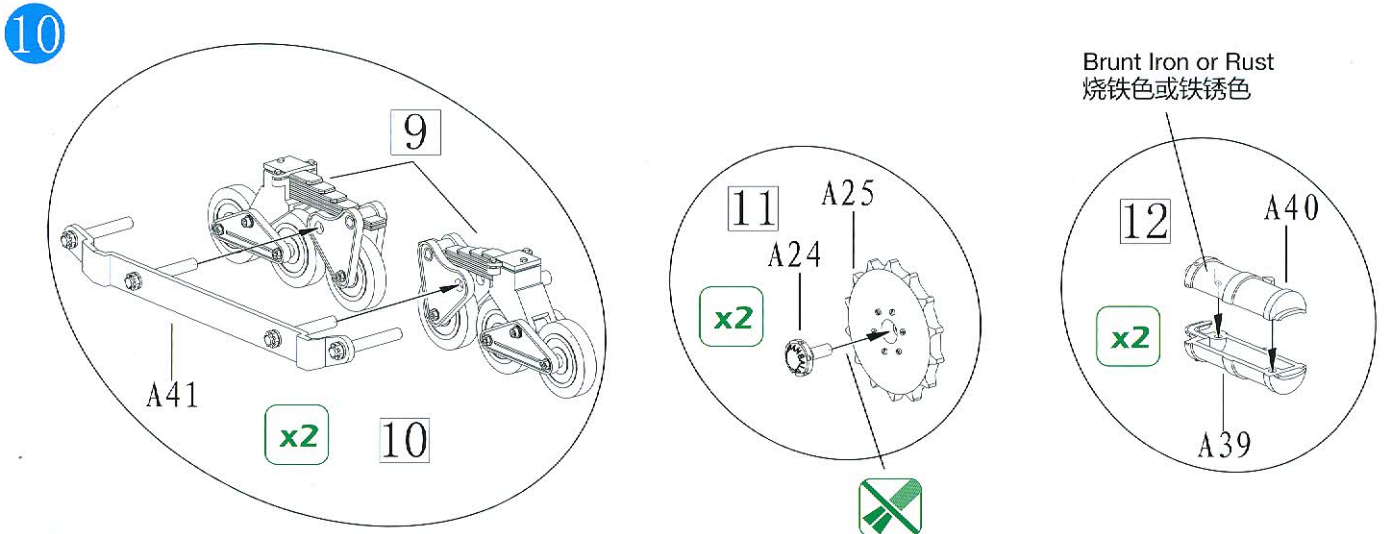
8



9

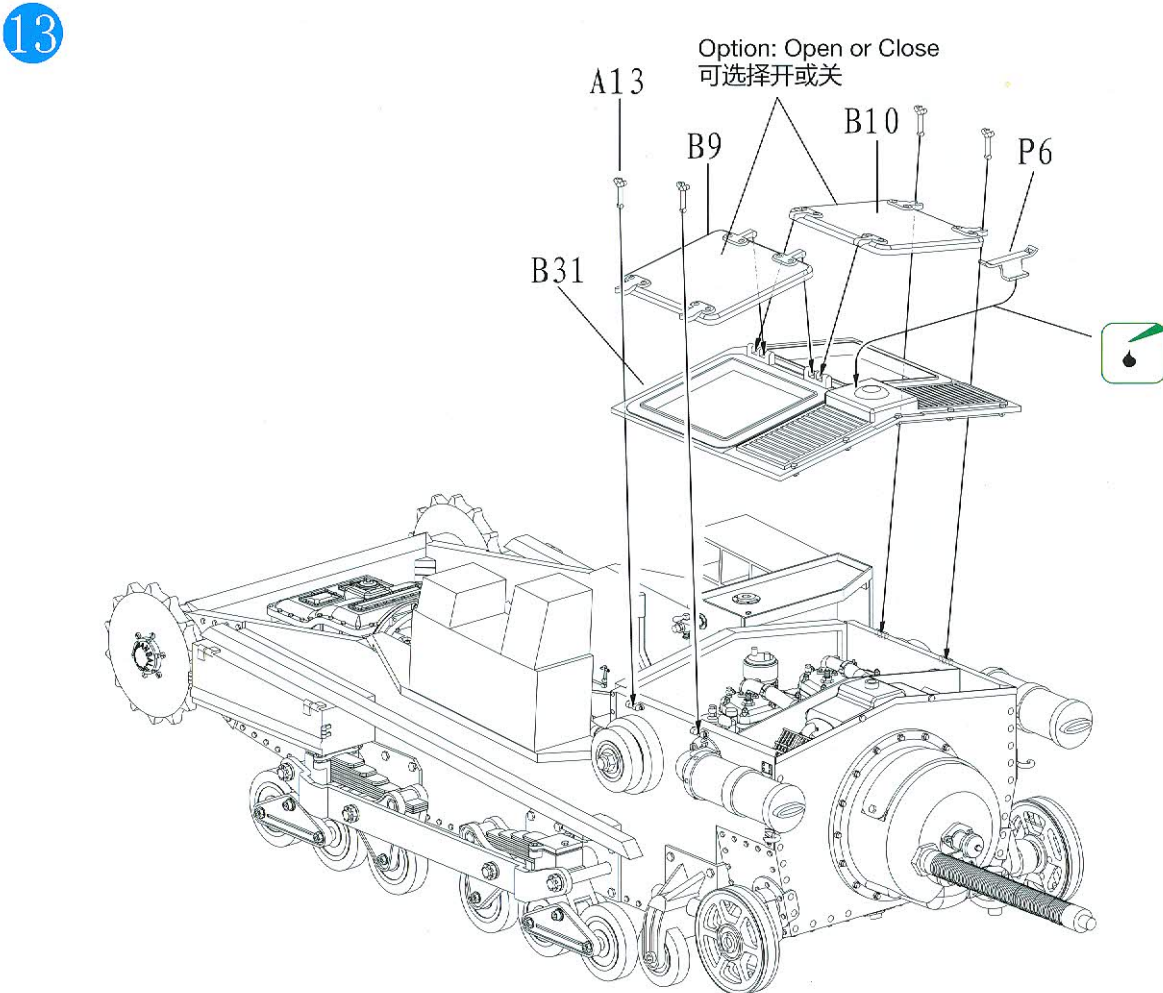
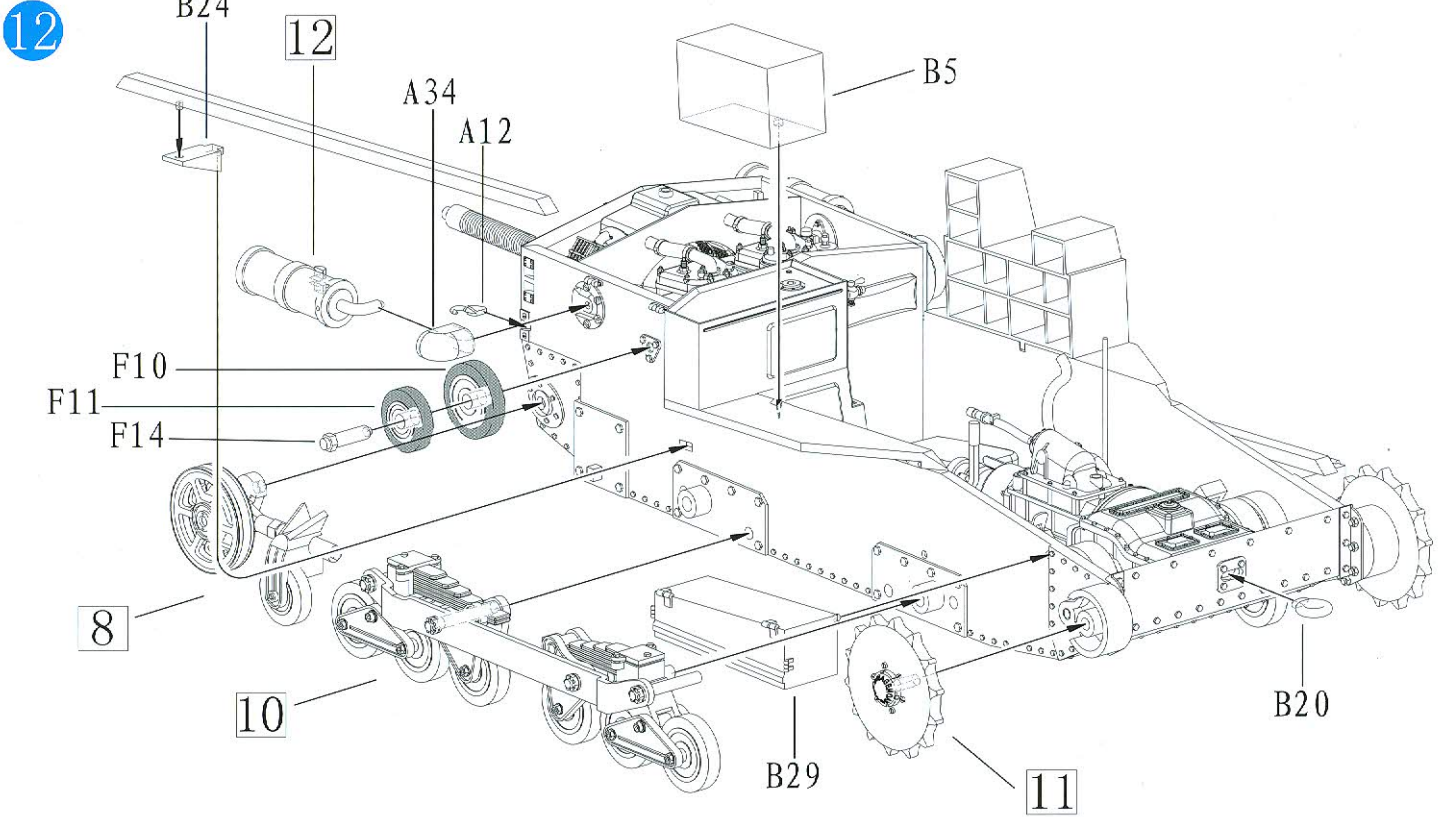






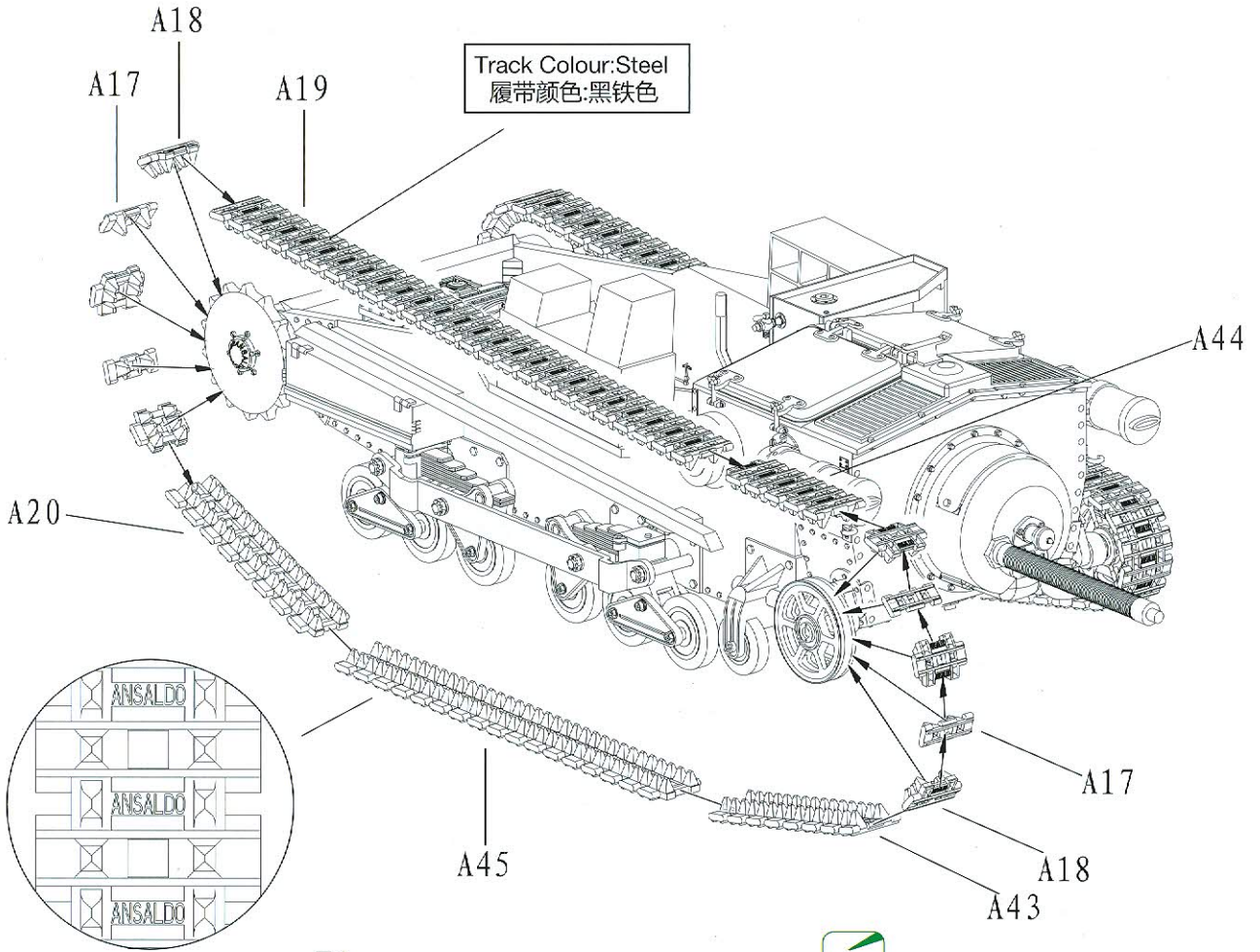


# ILLUSTRATION 图示说明:





14



15

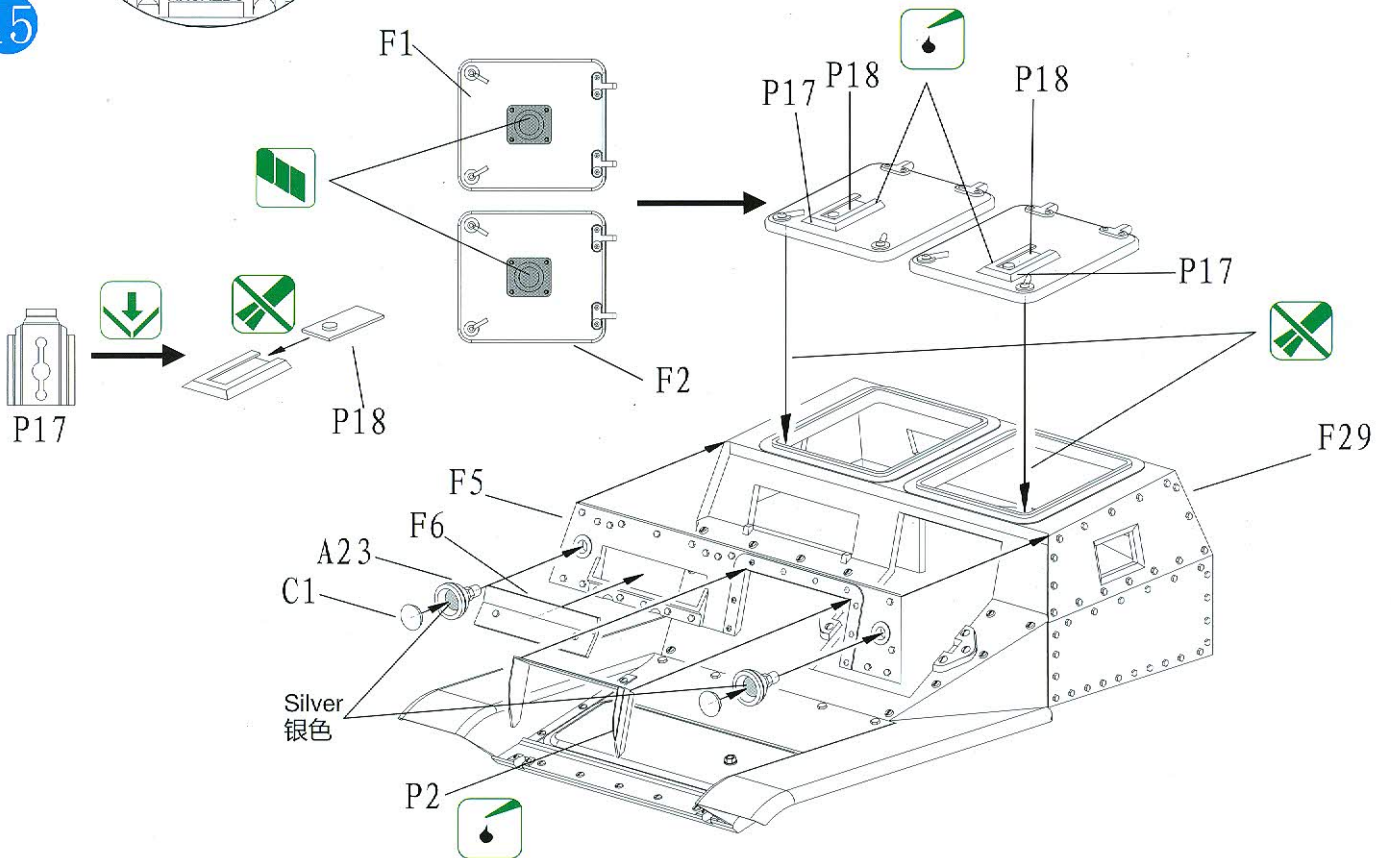
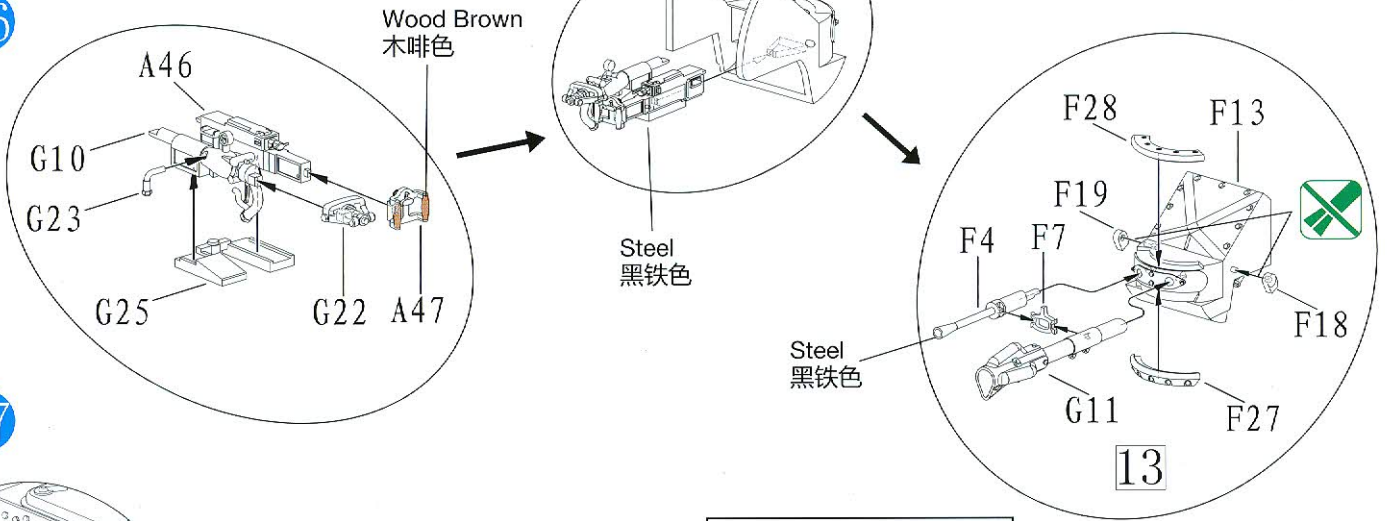


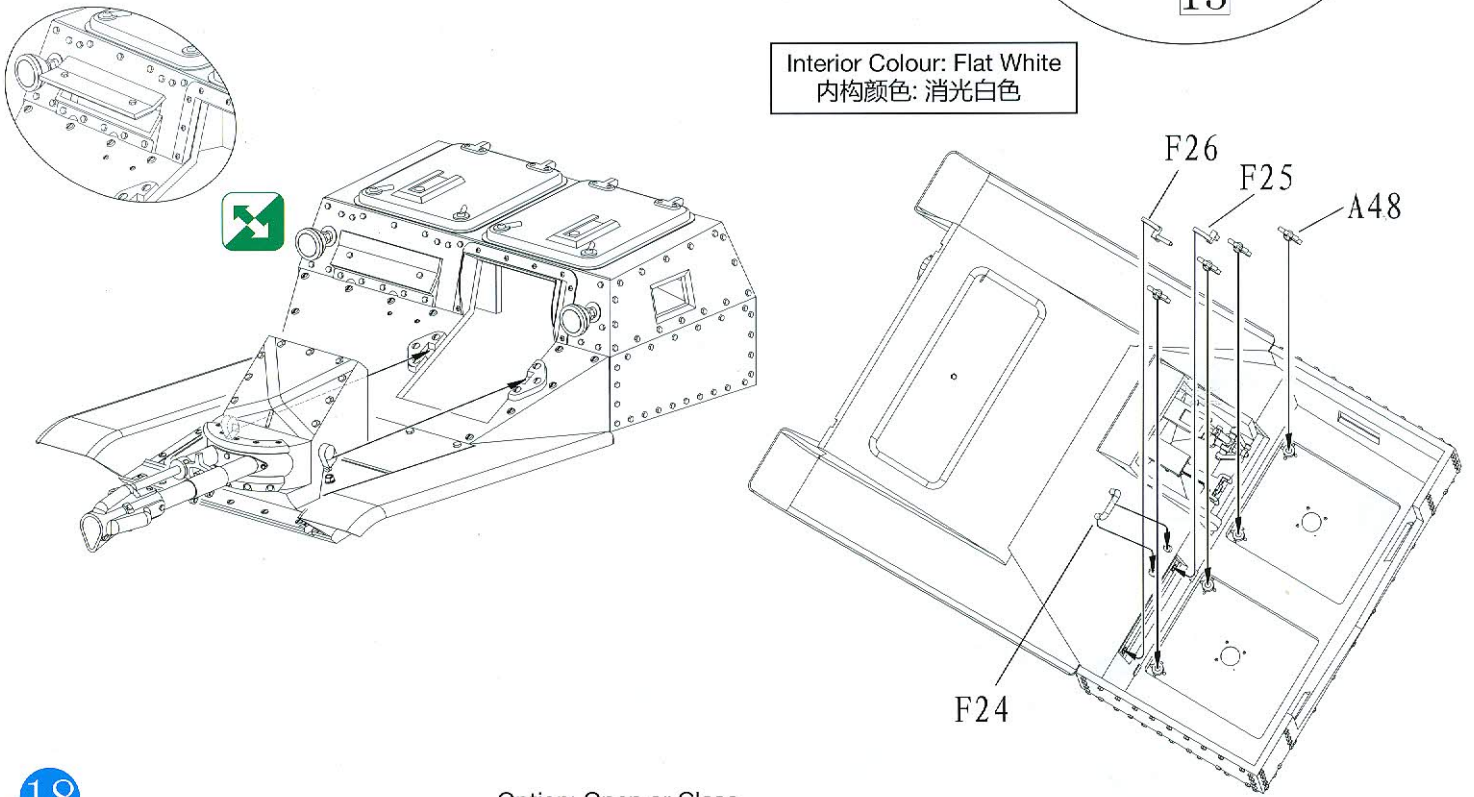


ILLUSTRATION 图示说明:

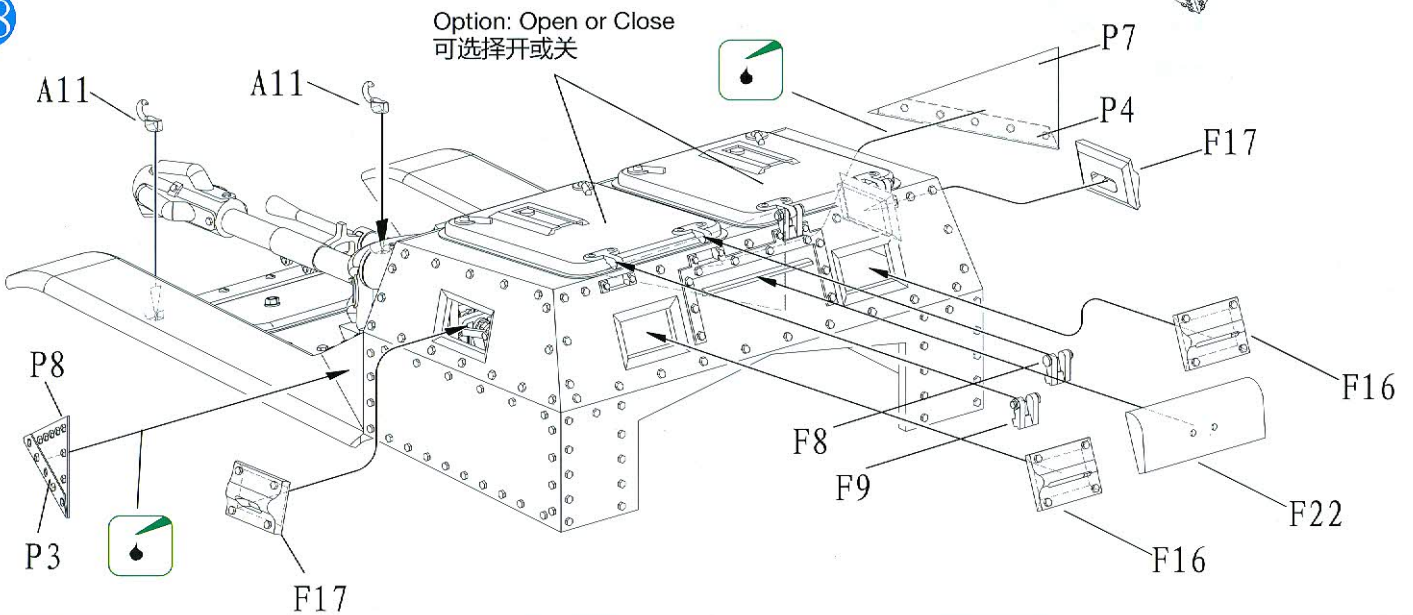
16



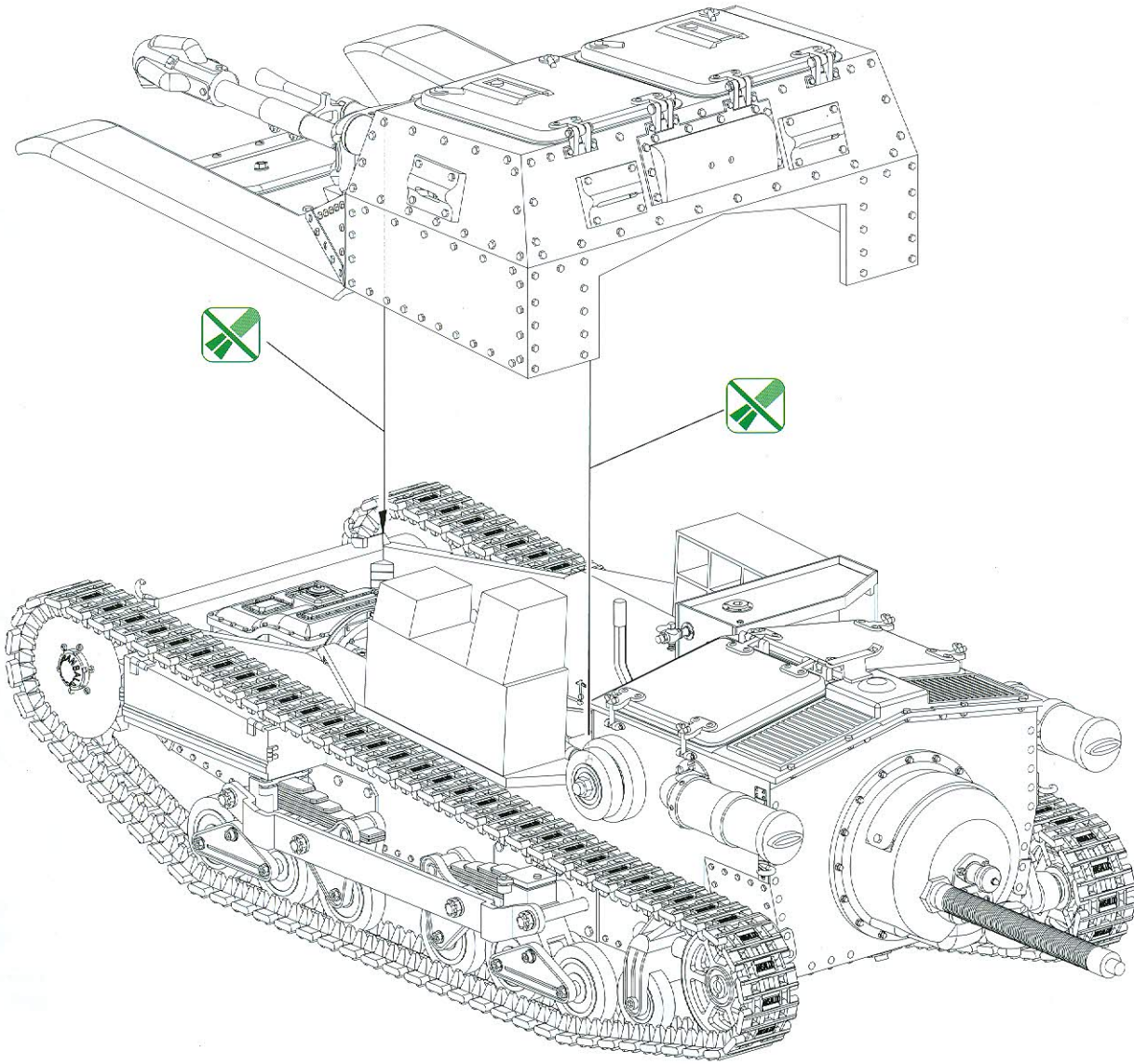
17



18



19



20

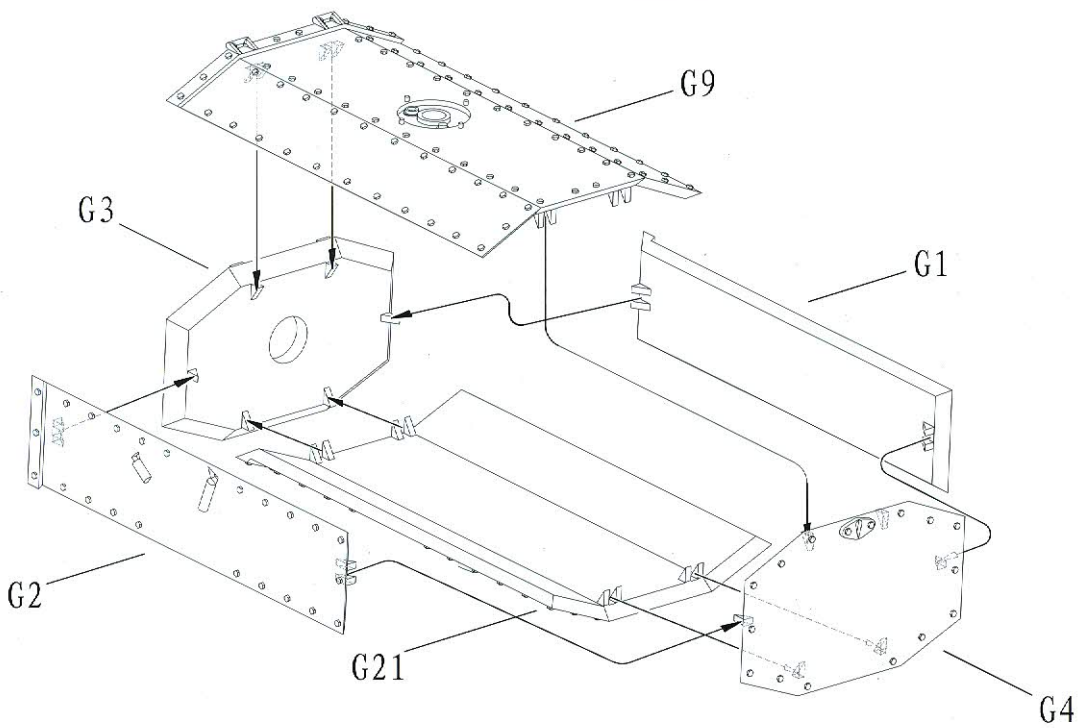
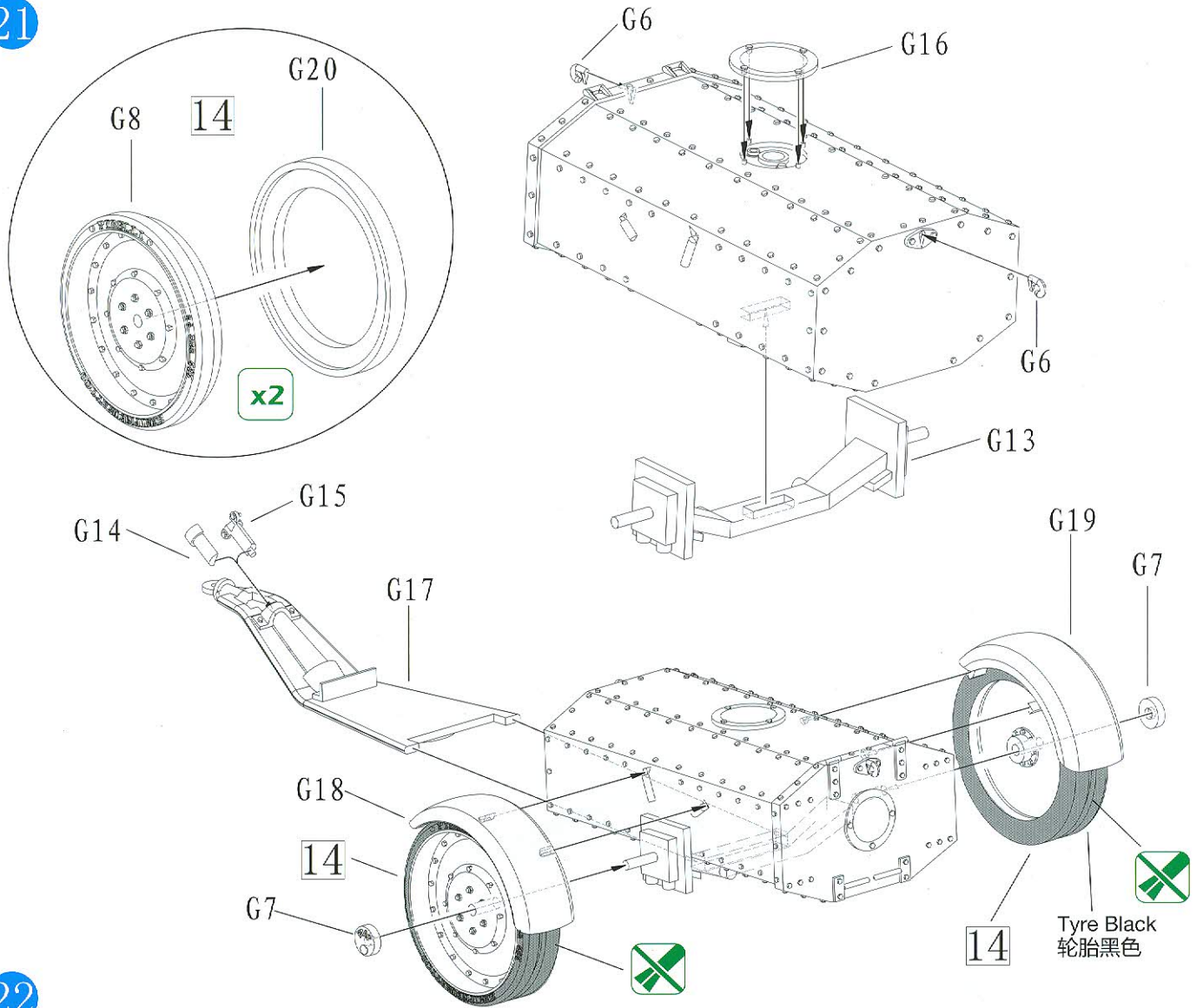


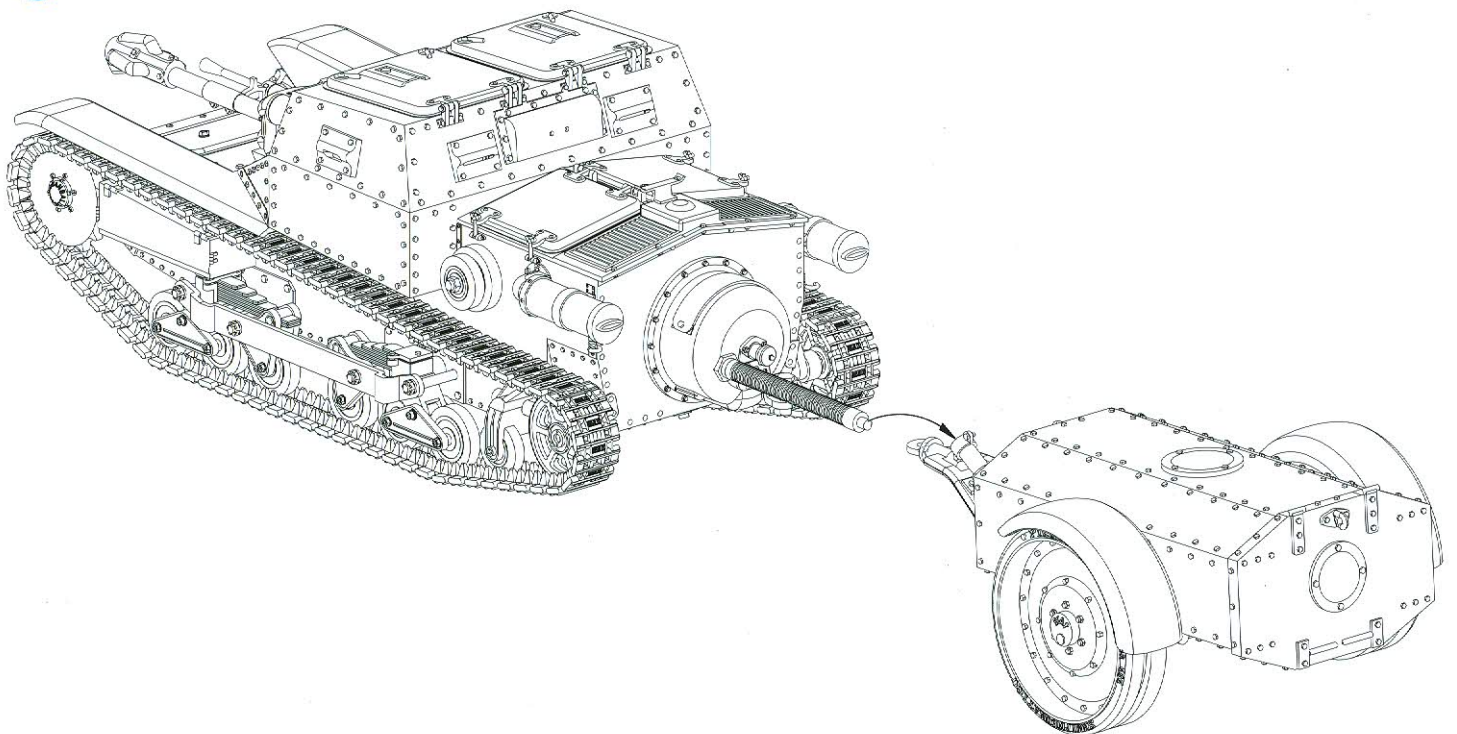


ILLUSTRATION 图示说明:

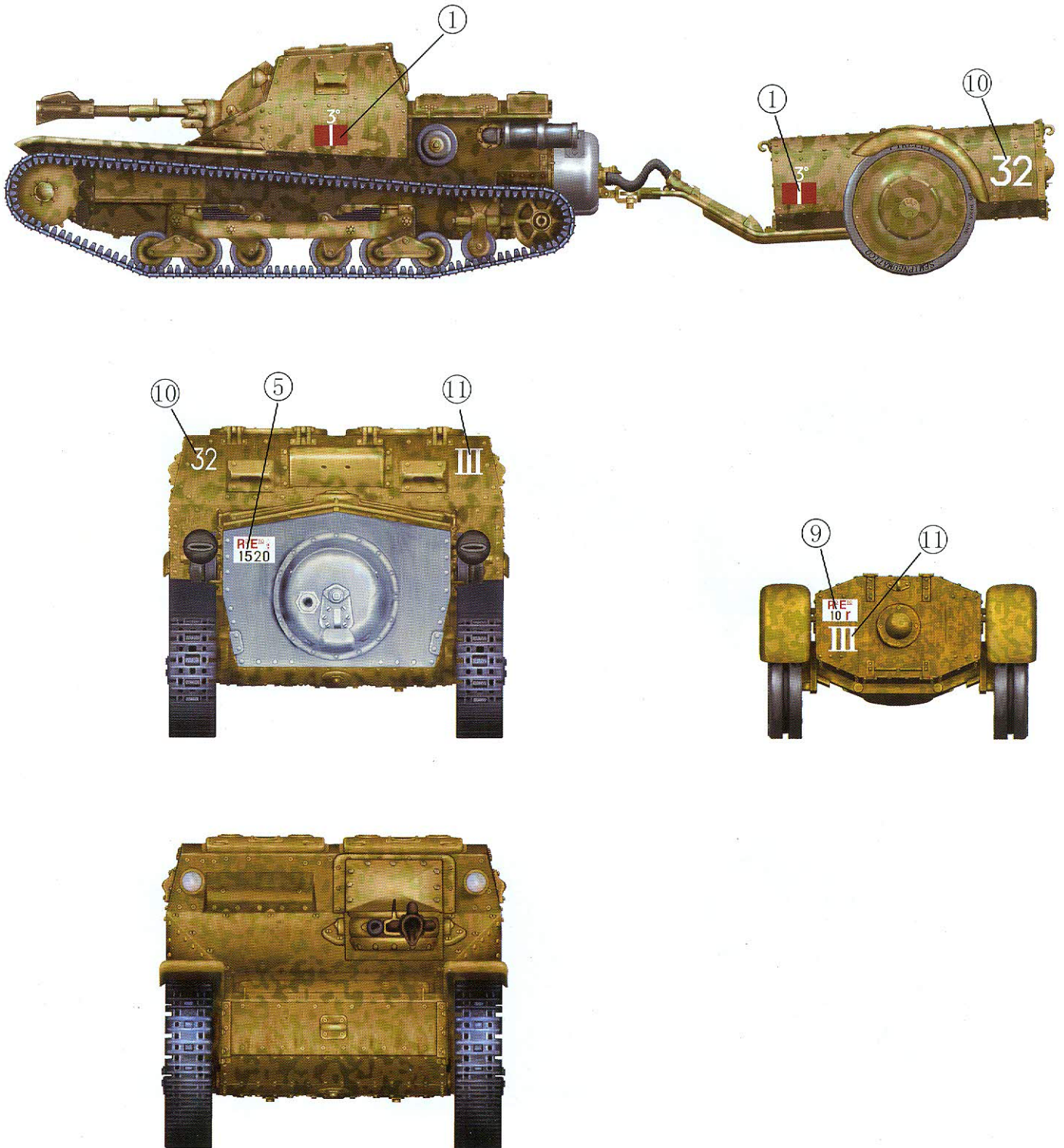
21



22



Option 1: C.V.35 II° tipo lanciafiamme, 3rd tank, 1st platoon, 1st company, 3rd battalion, 32nd tank regiment, Libya, N, Africa, 1940-41.  
 1940-41年在北非利比亚作战之第32坦克团，第3营，第1连之属下车辆。

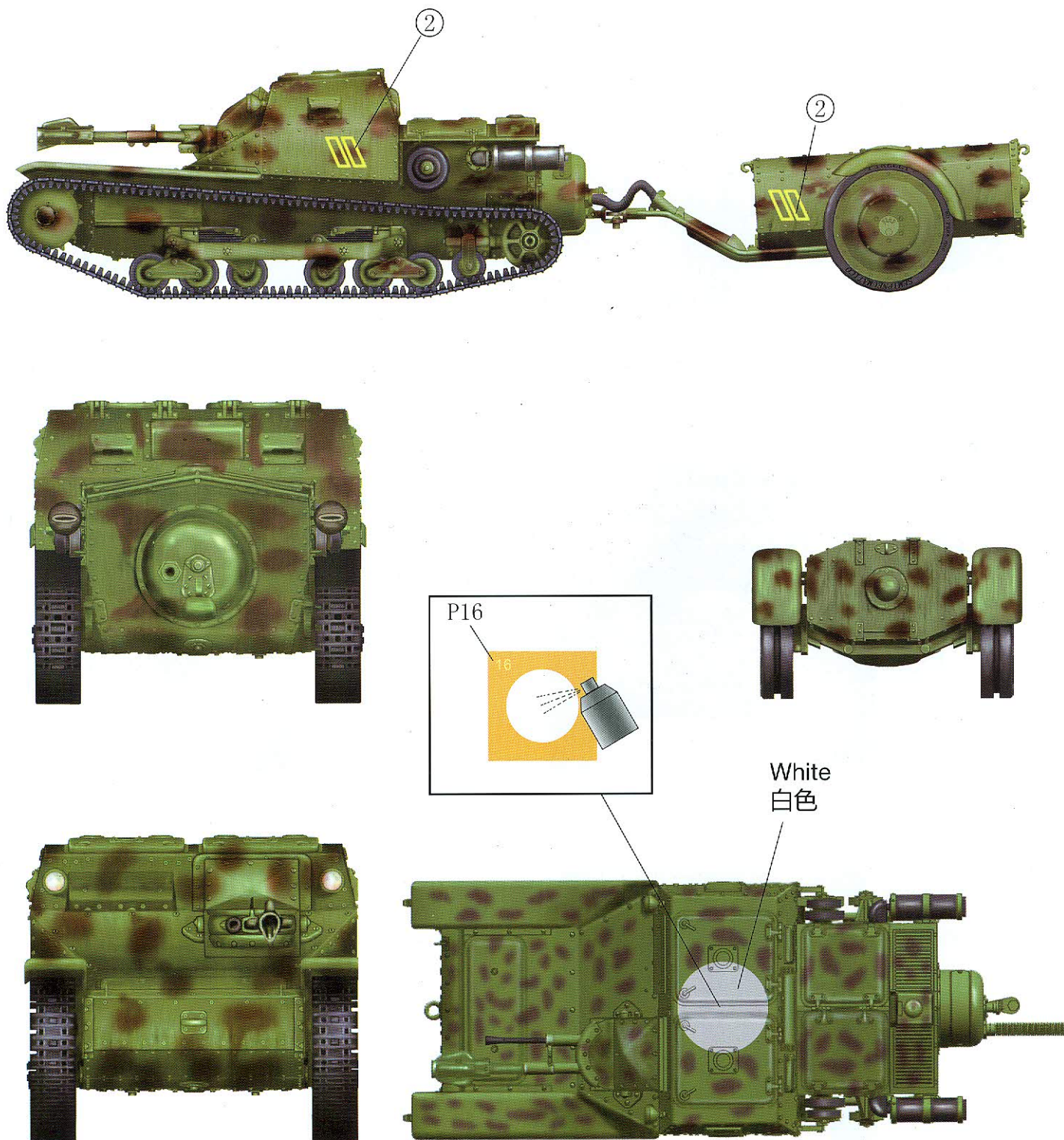


Camouflage Scheme: Overall Dark Sand Colour with Gray-Green(FS34159) Streak.  
 迷彩颜色：全车涂深沙色及灰绿色斑纹。



# DECAL & COLOUR GUIDE 水贴及涂色指示:

Option 2: CV.35 II° tipo lanciafiamme, Military exercise in Rome, May, 1937.  
1937年5月在罗马之军事演练车辆。



Camouflage Scheme: Overall Gray-green(FS34159) with the Red-brown(FS30108) spot.  
迷彩颜色: 全车涂灰绿色及红啡色斑点。