

# A.M.U.R.Reaver RC3214/RP3214 Bf109G-10 Erla Correction Set

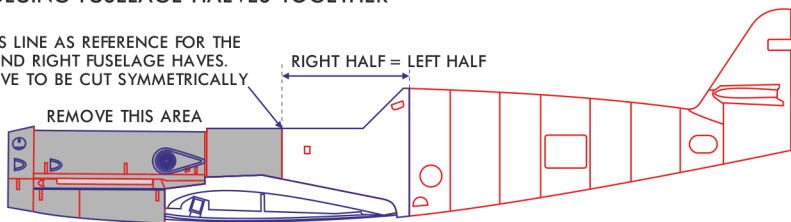
1/32

## STEP 1. BEFORE GLUING FUSELAGE HALVES TOGETHER

USE THIS LINE AS REFERENCE FOR THE LEFT AND RIGHT FUSELAGE HALVES. THEY HAVE TO BE CUT SYMMETRICALLY

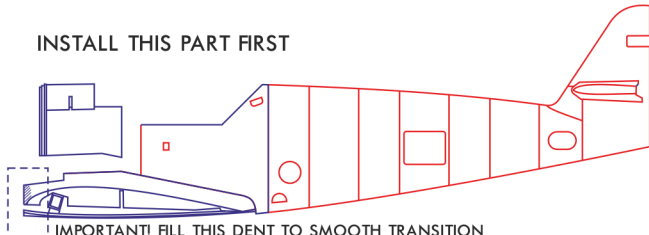
REMOVE THIS AREA

RIGHT HALF = LEFT HALF



## STEP 2. WHEN FUSELAGE HALVES GLUED TOGETHER AND COCKPIT IS INSTALLED

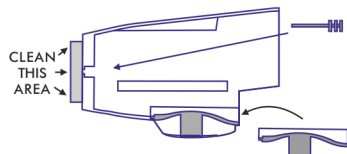
INSTALL THIS PART FIRST



IMPORTANT! FILL THIS DENT TO SMOOTH TRANSITION IN THIS AREA (SEE BELOW)

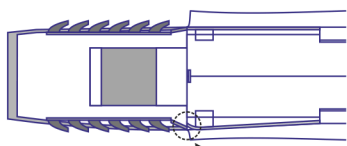
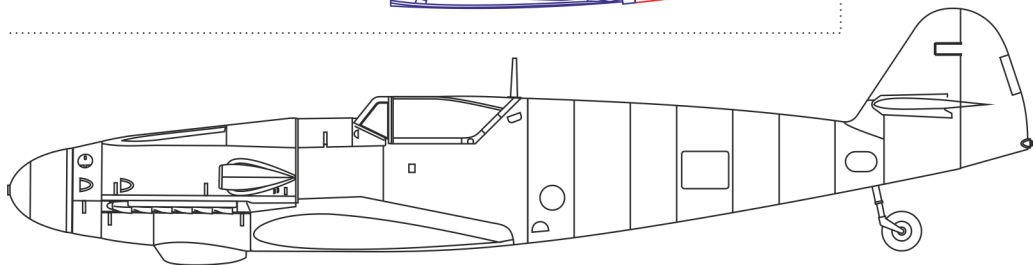
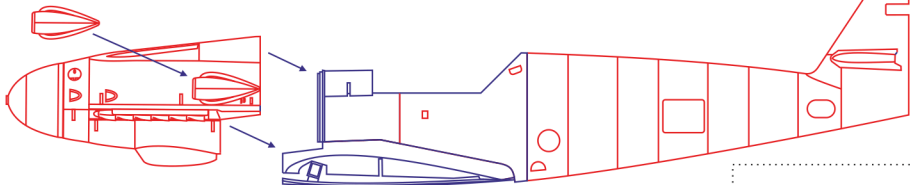
INSTALL GUN BARRELS, AIRSCREW SHAFT, EXHAUST PIPES AND OIL COOLER CHANNEL

CLEAN THIS AREA



THIS PART ALREADY HAVE FINE MESH STRUCTURE. YOU CAN ALSO USE OUR P.E. DETAILS TO IMPROVE THIS AREA

## STEP 3. INSTALL NOSE PART AND SUPERCHARGER INTAKE

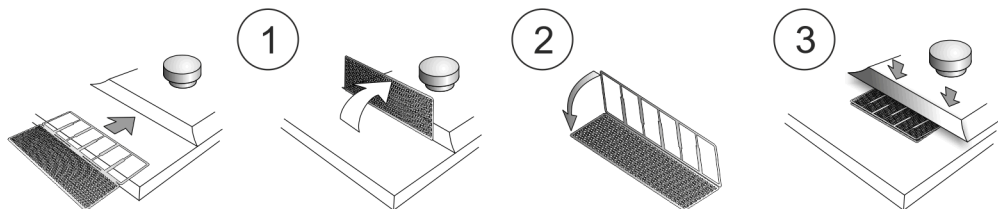


FILL AND SAND SMOOTHLY

NOTE: REVELL 109 HAS INCORRECT CROSS SECTIONS OF WHOLE NOSE SECTION AND MISSED SHAPE OF LOWER COWLING SECTION. ACCORDING TO OUR RESEARCH, LOWER COWLING PART ALSO HAD ASSYMETRICAL SHAPE - STRAIGHT STARBOARD EDGE WITH PIANO HINGE AND CURVED PORTSIDE FOR SMOOTH TRANSITION WITH WING FAIRING AND AREA BEHIND EXHAUST PIPES.

## Bf109G-10 OIL COOLER

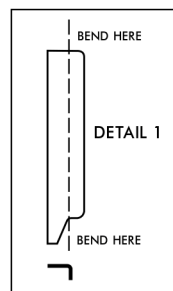
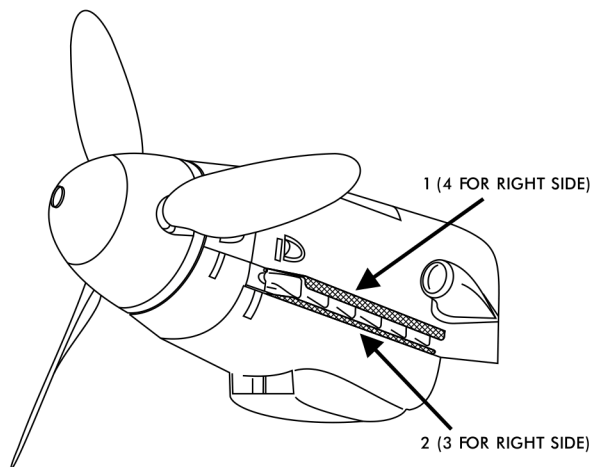
THIS SET IS MADE OF VERY THIN STAINLESS STEEL AND HAVE THE FINEST STRUCTURE AVAILABLE. WE RECOMMEND TO USE GOOD BENDING TOOL FOR THIS PRODUCT! IF YOU HAVE IT FOLLOW THE NEXT STEPS.



1. INSERT THE PART AND BEND IT AS SHOWN.
2. BEND FURTHER USING SMALL SMOOTH PLIERS OR TWEEZERS.
3. PRESS TIGHTLY TO SMOOTH OUT PART.

IF YOU DONT HAVE BENDING TOOL, WE RECOMMEND TO CUT THE DETAIL ALONG THE BENDING LINE AND GLUE HALVES TOGETHER USING MICRO LIQUID TAPE OR SO.

## Bf109G EXHAUST SHROUDS P.E. PARTS



Набор предназначен для модели Bf109G-10 Erla в масштабе 1/32 производства Revell.  
Осторожно! Содержит мелкие детали с острыми кромками!  
Не предназначен для использования детьми младше 14 лет.

The set suits Bf109G-10 Erla in 1/48 scale made by Revell.  
Caution! Consists of small parts with sharp edges!  
Not for children under age 14.