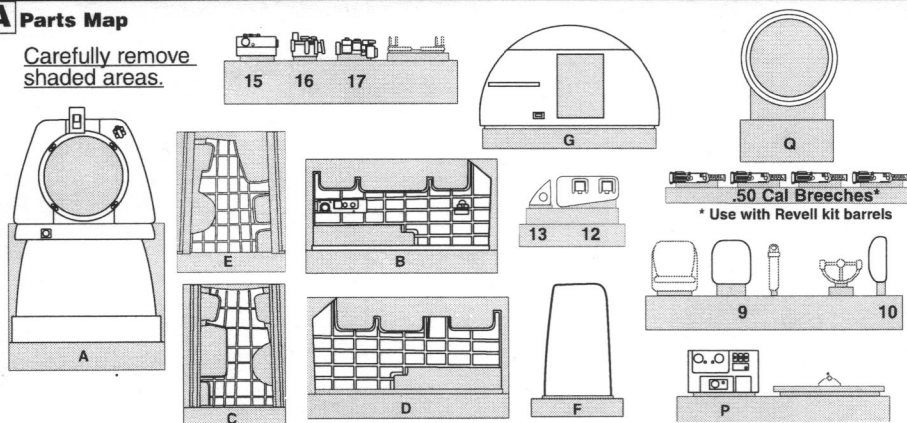


Please read instructions carefully!

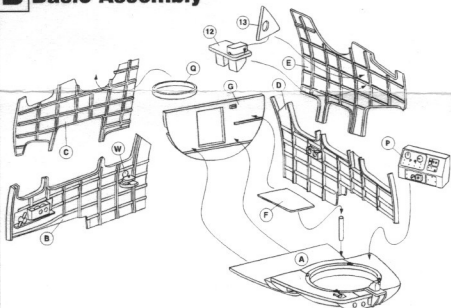
These are delicate parts and require patience and skill. Use small amounts of gap-filling cyanoacrylate (super) glue.

A Parts Map

Carefully remove shaded areas.



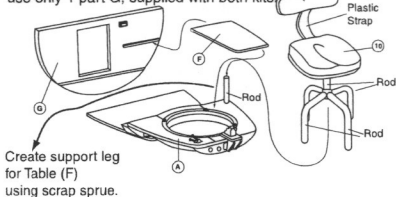
B Basic Assembly



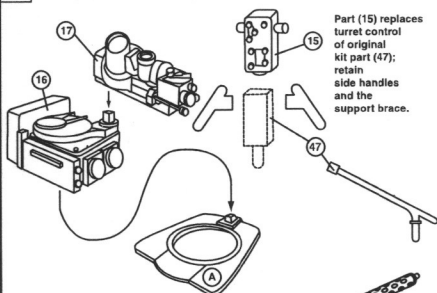
C Bombardier's Seat

Seat (9) & (10) needs parts not supplied with this kit. Back rest brace can be made from sprue or sheet styrene. Legs can be made with bent brass rods or sprue. Legs need to be long enough to secure seat over turret opening in Part A.

If using this kit with TD48509, use only 1 part G, supplied with both kits.

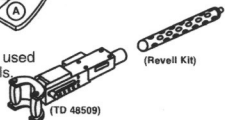


D Norton Sight/.50 Cal Assembly



Part (15) replaces turret control of original kit part (47); retain side handles and the support brace.

The .50 caliber guns are used with the original kit barrels. Simply clip or trim the barrels from the original kit and glue to TD set breeches.



E Color Notes (FED-STD-595B):

Surfaces	Interior Green (FS 34151)
Instrument Panel	Flat Black w/White needles
Seat	Olive Drab (FS 34088) or Yellow (FS 33538)
Machine Gun	Black and Steel
Table (F) & Shelf (12)	Wood

Additional B-17 Detail Kits:

- TD48510 Waist Gunner Section
- TD48509 Cockpit
- TD48098 Wheel Set
- SQ9551 Canopy Set #1
- SQ9552 Canopy Set #2

Further Reading:

- SS1063 B-17 in Action
- SS5516 B-17 Flying Fortress Walk Around