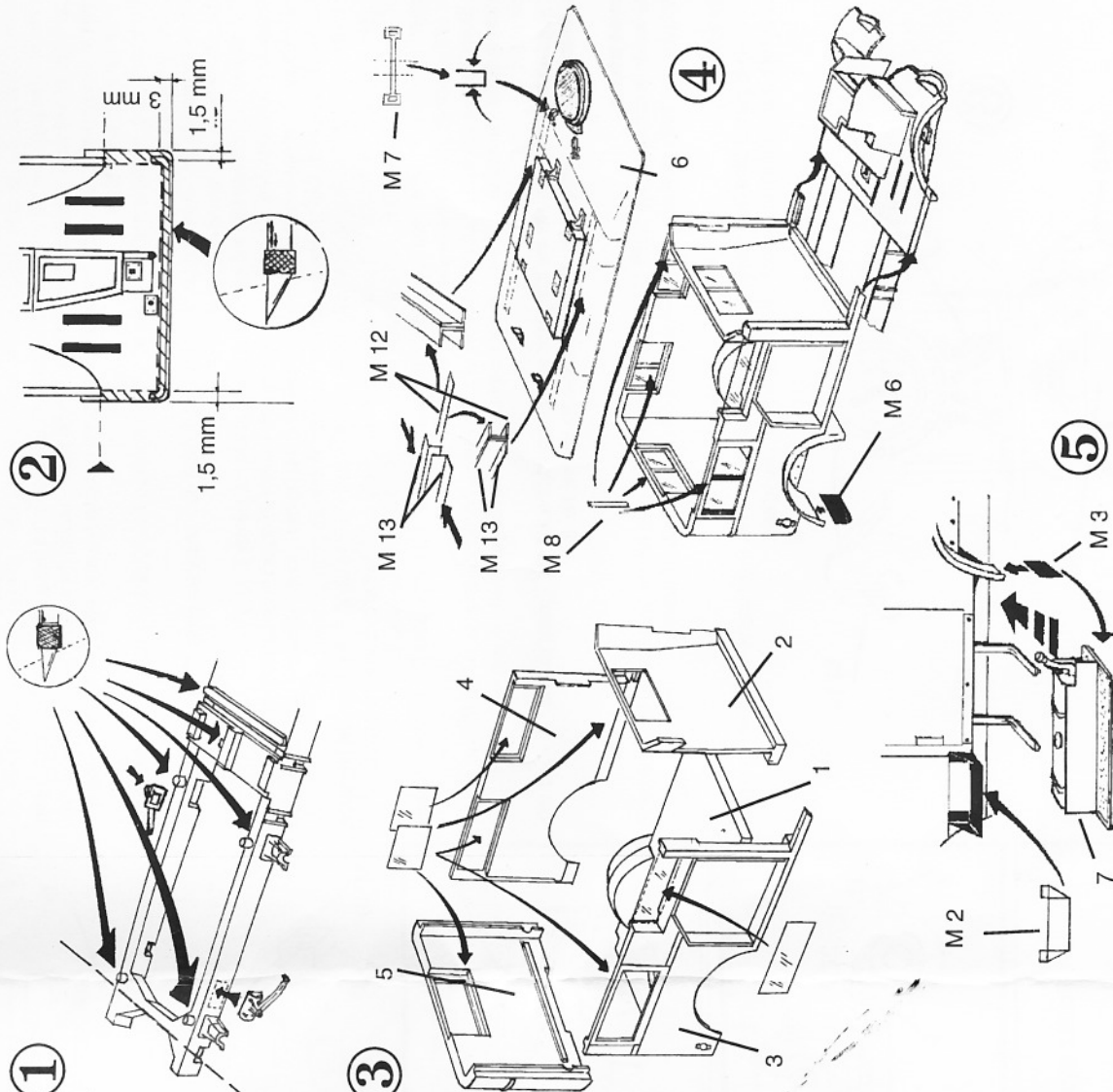


Návod ke stavbě:

Instructions:

1. Před vlastní stavbou je nutné upravit některé díly z původní stavbenice. Obrušte veškeré výstupky na horní hraně rámu vozidla a odřízněte zadní část rámu, vše podle obr. č. 1.
1. It is necessary to modify some parts of the original kit before assembly. Grind all lugs and bosses on the upper side of chassis frame of the vehicle and cut off rear part of the frame. Follow the drawing No. 1.
2. Upravte podle obr. č. 2 podlahu kabiny. Zadní část zkrátte o 3 mm a na každém boku odřízněte 1,5 mm.
2. Modify cabin floor in accordance with the picture No. 2. Shorten the floor rear of 3 mm and cut off 1,5 mm on each side.
3. Odřízněte nátluky ze všech dílů ze kterých se skládá skříň a slepte je podle obr. č. 3.
3. Cut off side risers of all parts making up the box body and cement it together with the drawing No. 3. They are the resin parts Nos. 1, 2, 3, 4 and 5. In accordance with the same drawing No. 3 cut out widows from the enclosed foil - always on two parts and cement them in the places.
4. Nalepte upravenou podlahu na rám (budejte muset zadní část podlehy podložit a podle obrázku č. 4 pod ní zasuněte přední hroty skříň (dveřní prahy). Pečlivě vše na suchu vyzkoušejte včetně lícování dveřní kabiny a pak celý komplet slepte.
4. Cement the modified cab floor on the frame (you will must to put a support plate under rear of the floor) and insert front tips of the box body (thresholds) under the floor in accordance with the drawing No. 4. Try whole assembly before cementing properly including fitting of the cab doors and the cement entire set together.
5. Nyní doteplete díly kabiny, interiéru a podvozku z původní stavbenice. Zadní tlumiče díly č. 9 a 10 a nalepte na vnější boky rámu podle obrázku č. 1. Budete muset vyrobit nové úchyty tlumičů na nápravě. Také držák bočního chodníčku (díly č. 41, 42, 43, 53 a 57. Držáky bočních chodníčků nalepte o 1 mm níže než v původní stavbenici, tak aby se daly nalepit nové chodníčky s nádržemi - resinové díly č. 7 a 8.
5. Now glue the cabin, interior and chassis from the original kit. Cement rear shock absorbers (Parts No. 9 and 10) on the sides of the frame in accordance with the drawing No. 1. You must make new absorber holders. Then cement the holder of the side footway (Part No. 45) instead of the part No. 48. Do not use parts Nos. 48, 47 and 46, also you do not need tanks - parts Nos. 41, 42, 43, 53, 54 and 57. Cement footway holders of 1 mm lower than in the original kit to be able cement new footways with tanks - resin parts Nos. 7 and 8. Cement resin part No. 6 - the cabin roof - from the upper side. Will you proceed in accordance with the drawing Nos. 5 and 6.
6. Na zadní čelo nalepte krumpáč - resinový díl č. 9 a dolů na zadní čelo rámu závěs - resinový díl č. 11. Pod rám nalepte bednu na nářadí - resinový díl č. 12. Bednu lepte těsně k diferenciálu. Lopata - resinový díl č. 10 patří na levou stranu zadního čela, ale nalepte ji až po natření modelu a nalepení otisků LEFT HAND DRIVE. Postupujte podle obrázku č. 7.
6. Cement the pick axe (resin part No. 9) on the rear face and cement the hinges - resin part No. 11 at the bottom of rear face of the frame. Cement tool box - resin part No. 12 - below the frame. Cement this tool box close to the differential. The shovel - resin part No. 10 - has place on the left side of the rear face, but cement this part until you paint assembled model and use decal "LEFT HAND DRIVE". See the drawing No. 7.

008



7. Na střechu nalepte kovové díly č. 12 a k nim ohnuté a slepené kovové díly č. 13, tak aby tvořily vodící kolej tvaru U pro poklop střechy. Za kulatý výlez z kabiny nalepte řemínky - kovové díly č. 7. Z venku na okna nalepte střední sloupky č. 8 a na zadní blatníky nalepte zástěrky - kovové díly č. 6. Postupujte podle obrázku č. 4.
7. Cement metal parts Nos. 12 on the roof and then bent and assembled metal parts No. 13 to shape U-form guide rail of the roof cover. Cement the straps - metal parts No. 7 - behind the circular opening. Cement central pillars - metal parts No. 8 - on the outside of the window and guards - metal parts No. 6 - on the rear fenders. Follow the drawing No. 4.

8. Podle obrázku č. 5 nalepte pod levé dveře do kabiny stupačku - kovový díl č. 2 a nalepte plechové spojky bočních chodníků s blatníkem kovové díly č. 3.
8. Cement running board - metal part No. 2 - below the left cabin door and sheet joints of the side sheet joints

9. Do výklenku pro náhradní kolo nalepte jeho držáky - ohnuté kovové díly č. 11 a 9.
Náhradní kolo bude vykloupené do strany od vnitřní osy a po usazení do držáků bude částečně přesahovat horní okraj výklenku. Do středu kola nalepte složený kovový díl č. 14. Do díry v tomto dílu vlepte tyčinku vytaženou z píastiku, která poslouží jako znázornění úchytného šroubu. Postupujte podle obrázku č. 6.
10. Podle obrázku č. 7 nalepte na zadní čelo držáky nářadí - ohnuté kovové díly č. 5. Na horní část krumpáče nalepte kovový díl č. 16. Nalepte pod zadní čelo ohnuté kovové díly č. 10 jako ukončení nosníků rámu.
10. Cement tools holders on the rear face - bent metal parts No. 5 - see drawing No. 7.
11. Cement metal holders on the rear face - bent metal parts No. 10 below the rear face as the endings of the frame beams.

11. Složte a slepte schránku na zdvihák - kovový díl č. 1 a nalepte ji pod zadní levý roh skříňe. Na čelo schránky nalepte dvířka - kovový díl č. 15 a na její bok nalepte pásek s odrazovým sklem - kovový díl č. 4. Postupujte podle obr. č. 8.

11. Make up and cement box for the lifting jack and cement it below left box - metal part No. 15 - and strip with reflecting glass - metal part No. 4. Will you follow the drawing No. 8.

Barevné schéma.
Celé vozidlo je natřeno barvou OLIVE DRAB, přední nárazník má konce natřeny bílou barvou. Ve stejné barvě jsou i pásy přes zadní dolní rohy skříňe. Bílé je i zadní čelo diferenciálu zadní nápravy.

Color scheme:
The vehicle is painted Olive Drab overall. Front bumper endings are white. Strips across rear bottom corners of the box body and rear front of the back axle differential are also white.

Color scheme:
The vehicle is painted Olive Drab overall. Front bumper endings are white. Strips across rear bottom corners of the box body and rear front of the back axle differential are also white.

Color scheme:
The vehicle is painted Olive Drab overall. Front bumper endings are white. Strips across rear bottom corners of the box body and rear front of the back axle differential are also white.

Color scheme:
The vehicle is painted Olive Drab overall. Front bumper endings are white. Strips across rear bottom corners of the box body and rear front of the back axle differential are also white.

Color scheme:
The vehicle is painted Olive Drab overall. Front bumper endings are white. Strips across rear bottom corners of the box body and rear front of the back axle differential are also white.

Color scheme:
The vehicle is painted Olive Drab overall. Front bumper endings are white. Strips across rear bottom corners of the box body and rear front of the back axle differential are also white.

Color scheme:
The vehicle is painted Olive Drab overall. Front bumper endings are white. Strips across rear bottom corners of the box body and rear front of the back axle differential are also white.

Color scheme:
The vehicle is painted Olive Drab overall. Front bumper endings are white. Strips across rear bottom corners of the box body and rear front of the back axle differential are also white.

Color scheme:
The vehicle is painted Olive Drab overall. Front bumper endings are white. Strips across rear bottom corners of the box body and rear front of the back axle differential are also white.

Color scheme:
The vehicle is painted Olive Drab overall. Front bumper endings are white. Strips across rear bottom corners of the box body and rear front of the back axle differential are also white.

Color scheme:
The vehicle is painted Olive Drab overall. Front bumper endings are white. Strips across rear bottom corners of the box body and rear front of the back axle differential are also white.

Color scheme:
The vehicle is painted Olive Drab overall. Front bumper endings are white. Strips across rear bottom corners of the box body and rear front of the back axle differential are also white.

Color scheme:
The vehicle is painted Olive Drab overall. Front bumper endings are white. Strips across rear bottom corners of the box body and rear front of the back axle differential are also white.

Color scheme:
The vehicle is painted Olive Drab overall. Front bumper endings are white. Strips across rear bottom corners of the box body and rear front of the back axle differential are also white.

Color scheme:
The vehicle is painted Olive Drab overall. Front bumper endings are white. Strips across rear bottom corners of the box body and rear front of the back axle differential are also white.

Color scheme:
The vehicle is painted Olive Drab overall. Front bumper endings are white. Strips across rear bottom corners of the box body and rear front of the back axle differential are also white.

Color scheme:
The vehicle is painted Olive Drab overall. Front bumper endings are white. Strips across rear bottom corners of the box body and rear front of the back axle differential are also white.

Color scheme:
The vehicle is painted Olive Drab overall. Front bumper endings are white. Strips across rear bottom corners of the box body and rear front of the back axle differential are also white.

Color scheme:
The vehicle is painted Olive Drab overall. Front bumper endings are white. Strips across rear bottom corners of the box body and rear front of the back axle differential are also white.

Color scheme:
The vehicle is painted Olive Drab overall. Front bumper endings are white. Strips across rear bottom corners of the box body and rear front of the back axle differential are also white.

Color scheme:
The vehicle is painted Olive Drab overall. Front bumper endings are white. Strips across rear bottom corners of the box body and rear front of the back axle differential are also white.

Color scheme:
The vehicle is painted Olive Drab overall. Front bumper endings are white. Strips across rear bottom corners of the box body and rear front of the back axle differential are also white.

Color scheme:
The vehicle is painted Olive Drab overall. Front bumper endings are white. Strips across rear bottom corners of the box body and rear front of the back axle differential are also white.

Color scheme:
The vehicle is painted Olive Drab overall. Front bumper endings are white. Strips across rear bottom corners of the box body and rear front of the back axle differential are also white.

Color scheme:
The vehicle is painted Olive Drab overall. Front bumper endings are white. Strips across rear bottom corners of the box body and rear front of the back axle differential are also white.

Color scheme:
The vehicle is painted Olive Drab overall. Front bumper endings are white. Strips across rear bottom corners of the box body and rear front of the back axle differential are also white.

Color scheme:
The vehicle is painted Olive Drab overall. Front bumper endings are white. Strips across rear bottom corners of the box body and rear front of the back axle differential are also white.

Color scheme:
The vehicle is painted Olive Drab overall. Front bumper endings are white. Strips across rear bottom corners of the box body and rear front of the back axle differential are also white.

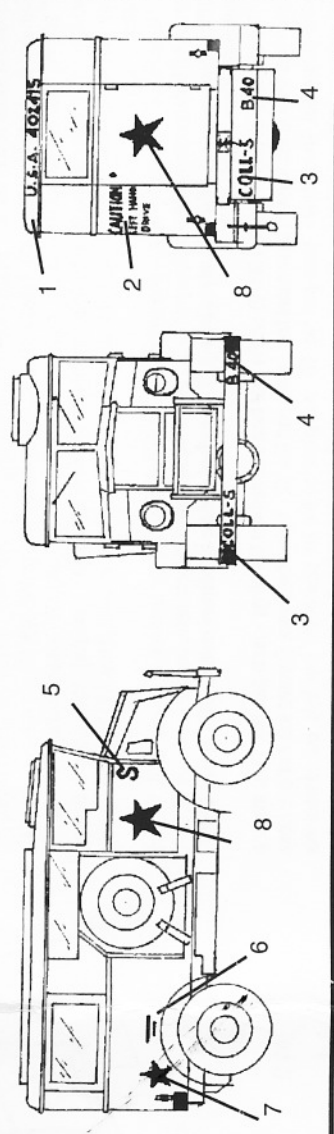
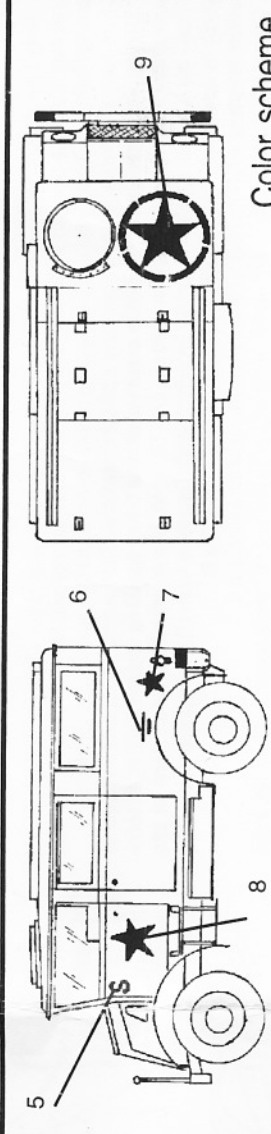
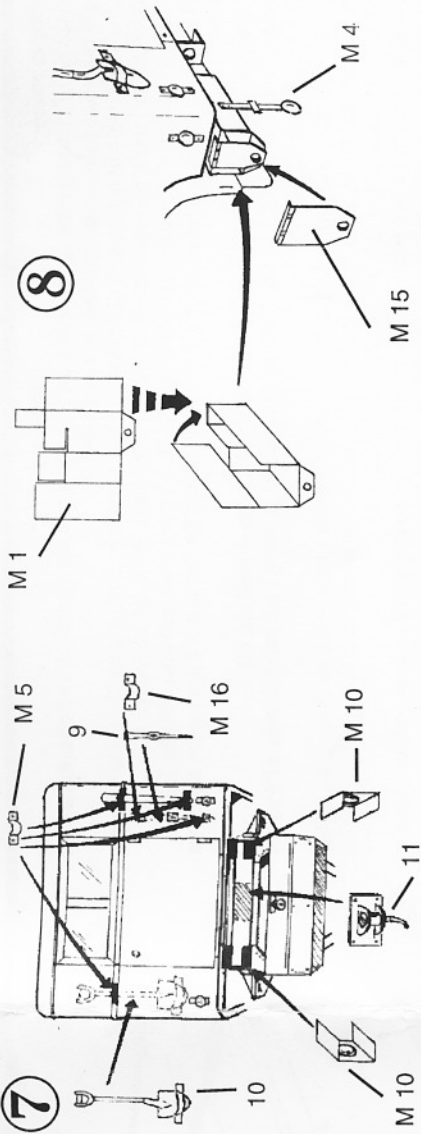
Color scheme:
The vehicle is painted Olive Drab overall. Front bumper endings are white. Strips across rear bottom corners of the box body and rear front of the back axle differential are also white.

Color scheme:
The vehicle is painted Olive Drab overall. Front bumper endings are white. Strips across rear bottom corners of the box body and rear front of the back axle differential are also white.

Color scheme:
The vehicle is painted Olive Drab overall. Front bumper endings are white. Strips across rear bottom corners of the box body and rear front of the back axle differential are also white.

Color scheme:
The vehicle is painted Olive Drab overall. Front bumper endings are white. Strips across rear bottom corners of the box body and rear front of the back axle differential are also white.

Color scheme:
The vehicle is painted Olive Drab overall. Front bumper endings are white. Strips across rear bottom corners of the box body and rear front of the back axle differential are also white.



UPOZORNĚNÍ:
Prach z pryskyřice je toxický, je-li vdečován. Použijte ochranu očí při odstříhávání kovových dílů.
NOTICE:
Resin dust is toxic if inhaled. Use proper ventilation and near protection. Always wear eye protection when cutting photo-etched parts.