



KITTY
HAWK

1:48

1:48

MiG-25 PD/PDS 狐蝠

MiG-25 PD/PDS Foxbat



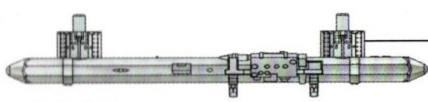
Instruction

Item No. KH80119

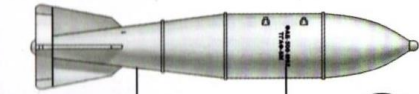
Painting & marking Guide

塗裝與水貼

《FAB-500》



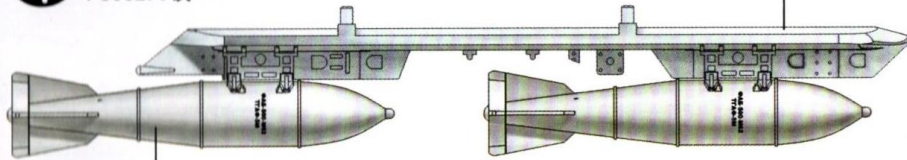
C307
GRAY FS 36320
FS36320 灰



x8 制作八組
Make Eight

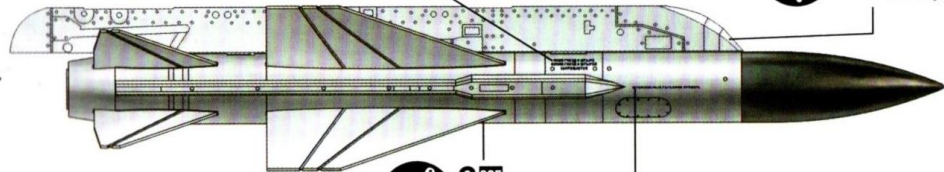
C306
GRAY FS36270
FS36270 灰

a (a) 對側
Opposite



C306
GRAY FS36270
FS36270 灰

x4 制作四組
Make Four



a (a) 對側
Opposite

C1
WHITE
白色

《FAB-1500》



a (a) 對側
Opposite

C306
GRAY FS36270
FS36270 灰

x4 制作四組
Make Four

C305
GRAY FS36118
FS36118 灰

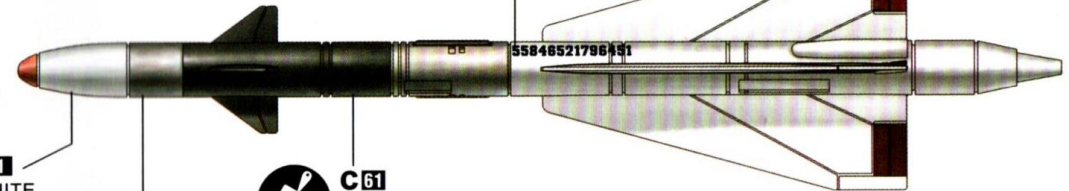
b (b) 對側
Opposite

x4 制作四組
Make Four

C1
WHITE
白色

C8
SILVER
銀色

C61
BURNT IRON
燒鐵色



a (a) 對側
Opposite

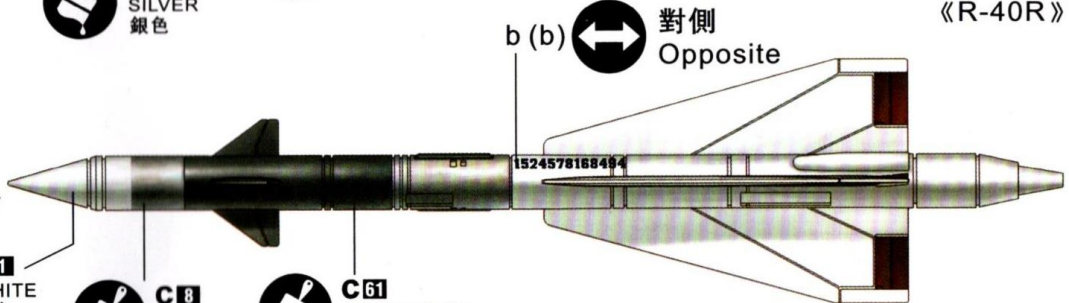
《R-40T》

x4 制作四組
Make Four

C1
WHITE
白色

C8
SILVER
銀色

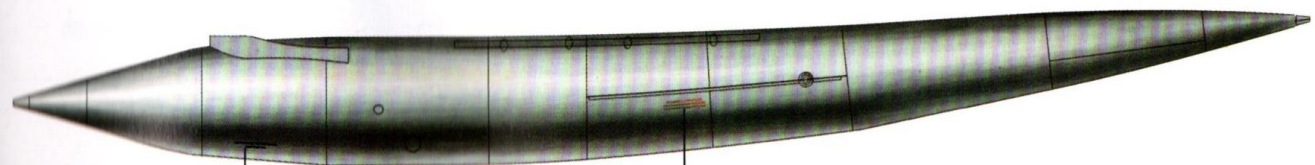
C61
BURNT IRON
燒鐵色



b (b) 對側
Opposite

《R-40R》

《Fuel Tank》



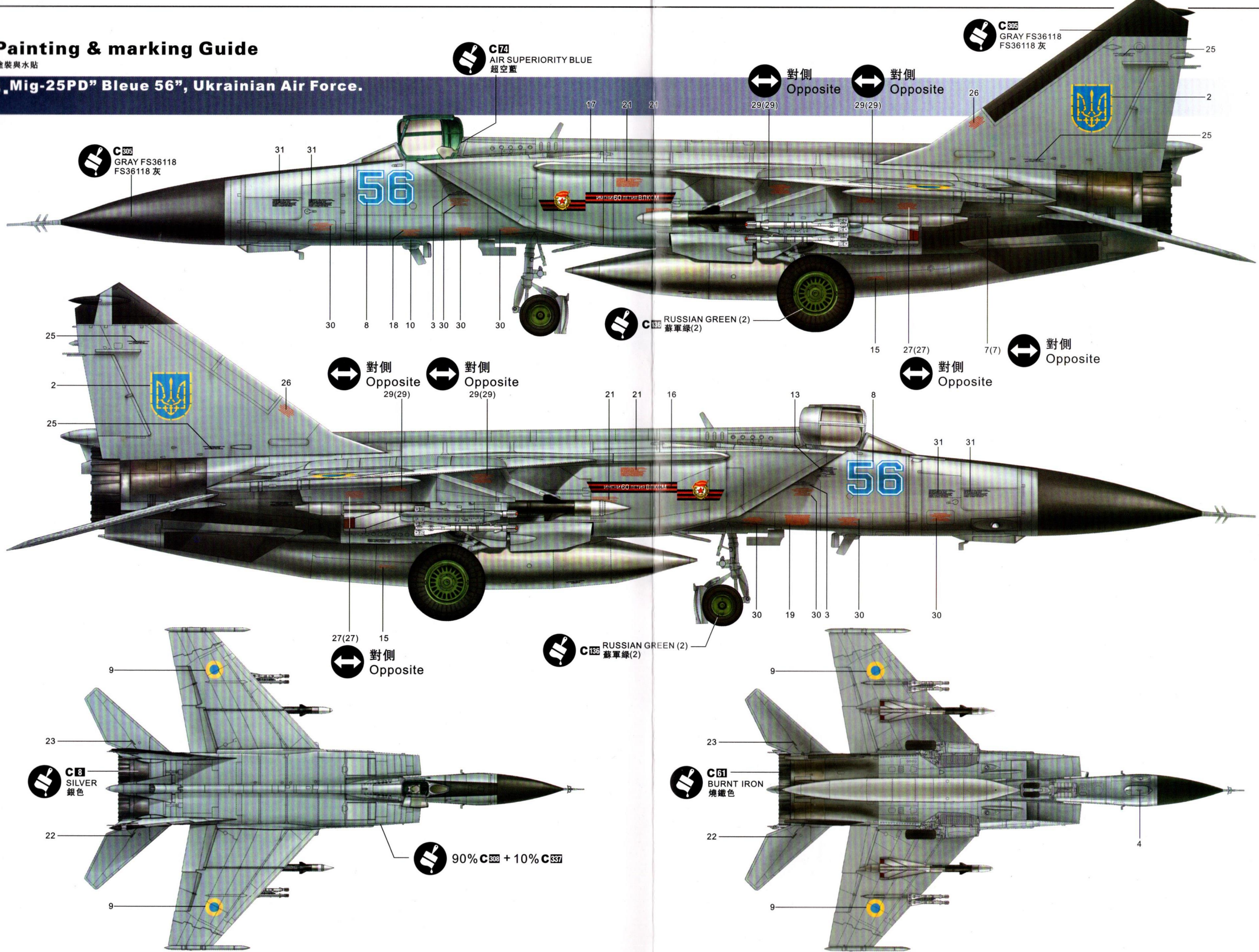
24 (24) 對側
Opposite

28 (28) 對側
Opposite

Painting & marking Guide

塗裝與水貼

B „Mig-25PD” „Bleue 56”, Ukrainian Air Force.



C 305
GRAY FS36118
FS36118 灰

C 171
AIR SUPERIORITY BLUE
超空藍

C 305
GRAY FS36118
FS36118 灰

C 136
RUSSIAN GREEN (2)
蘇軍綠(2)

C 136
RUSSIAN GREEN (2)
蘇軍綠(2)

C 8
SILVER
銀色

C 61
BURNT IRON
燒鐵色

90% C 308 + 10% C 337

Painting & marking Guide

塗裝與水貼

C_Mig-25PD, Iraqi AF

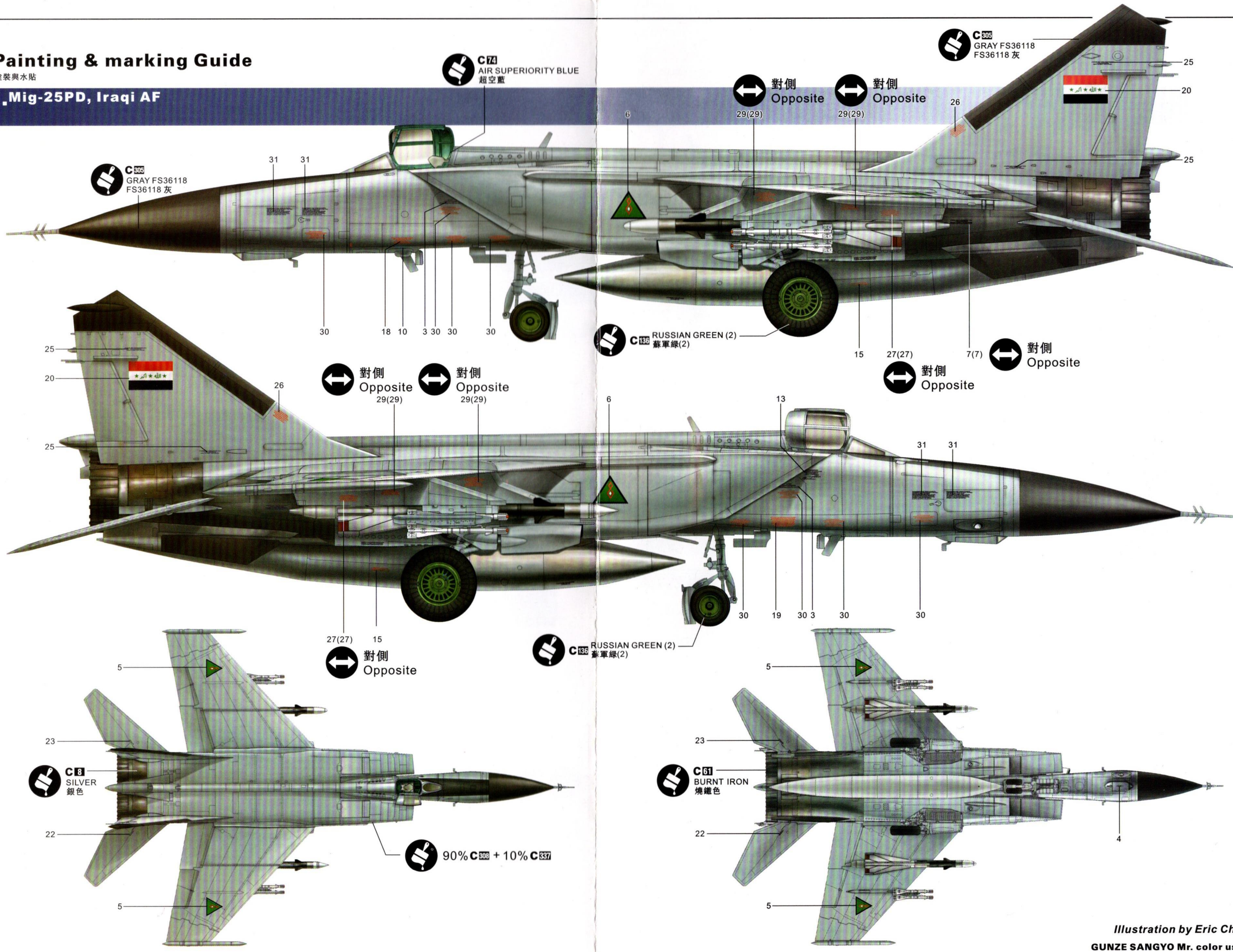
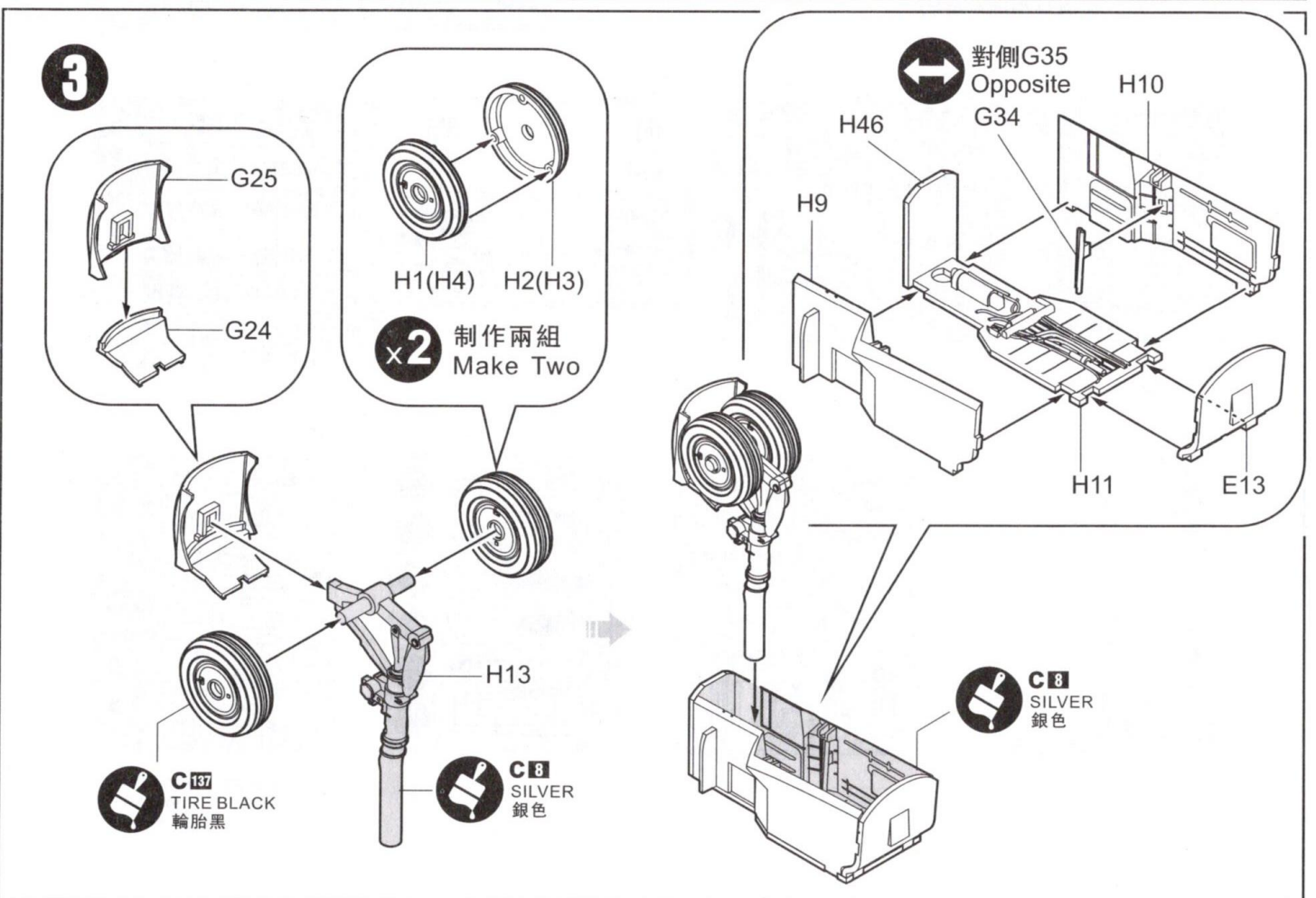
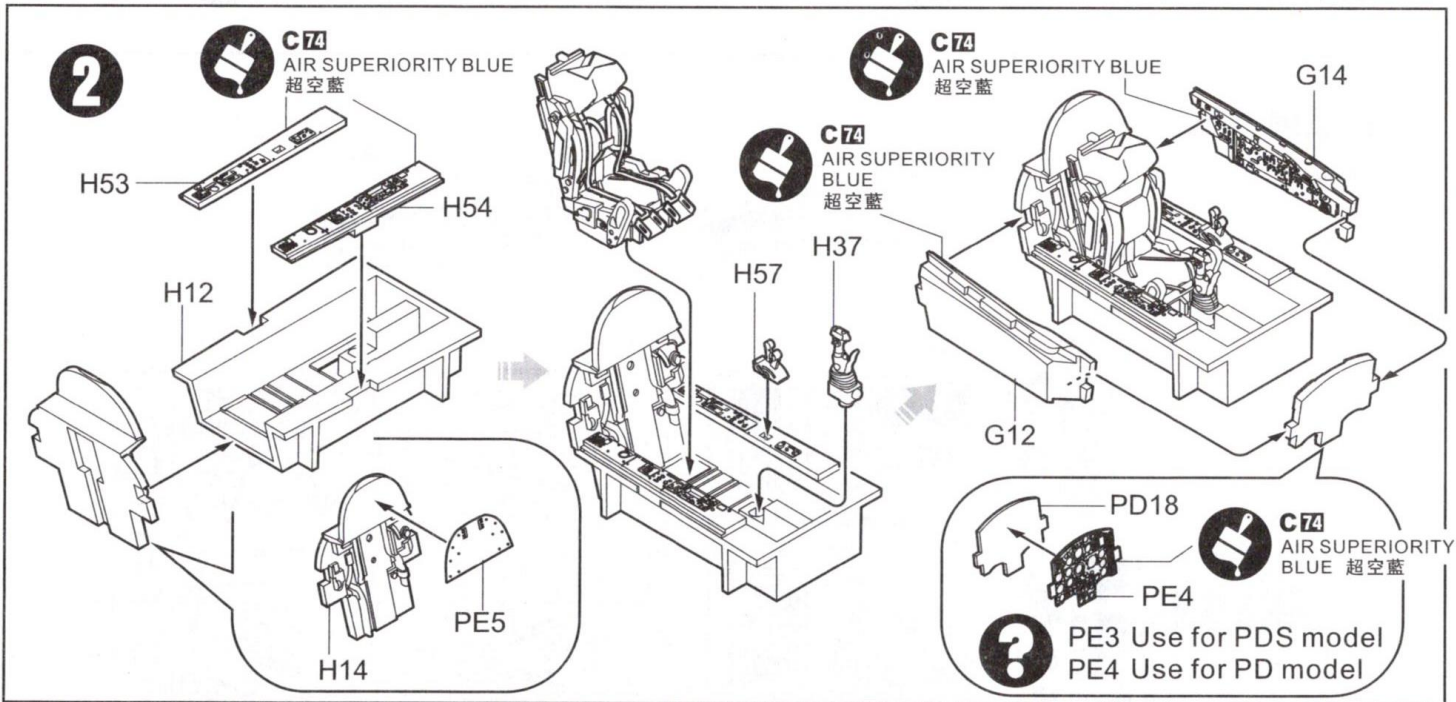
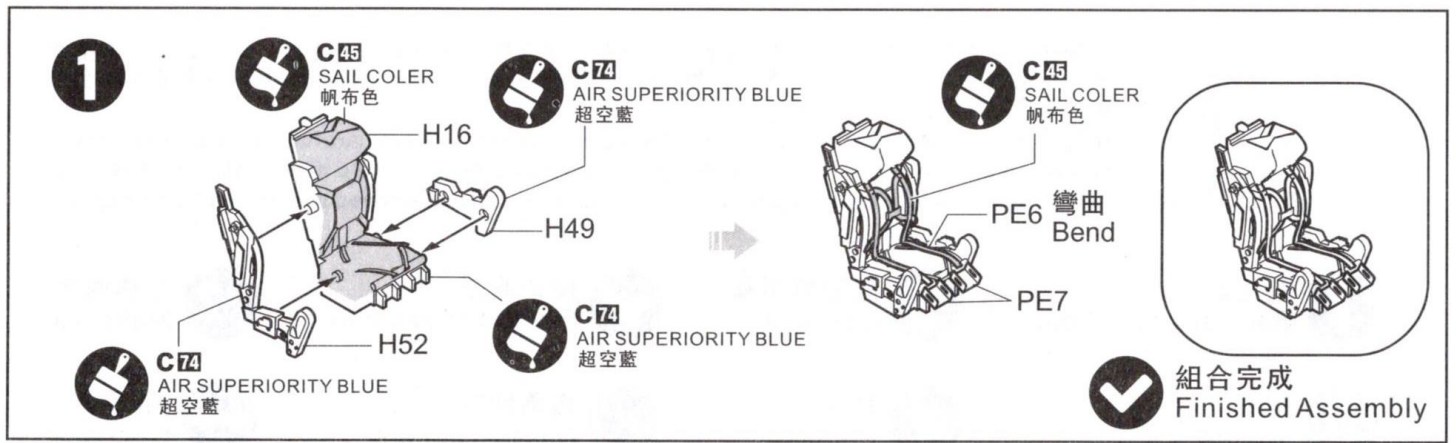
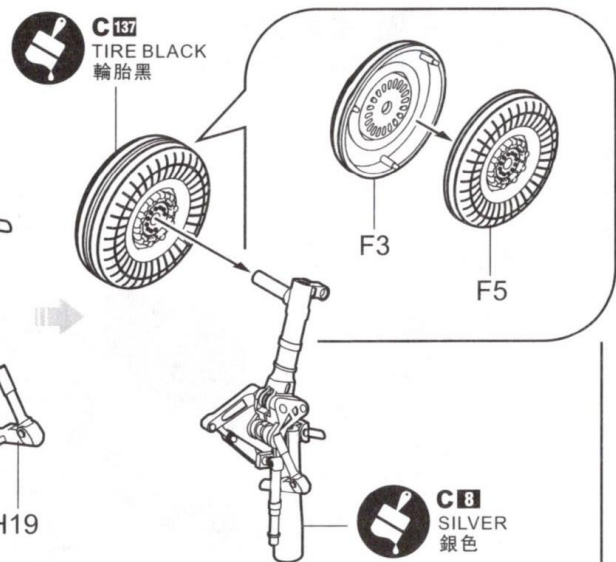
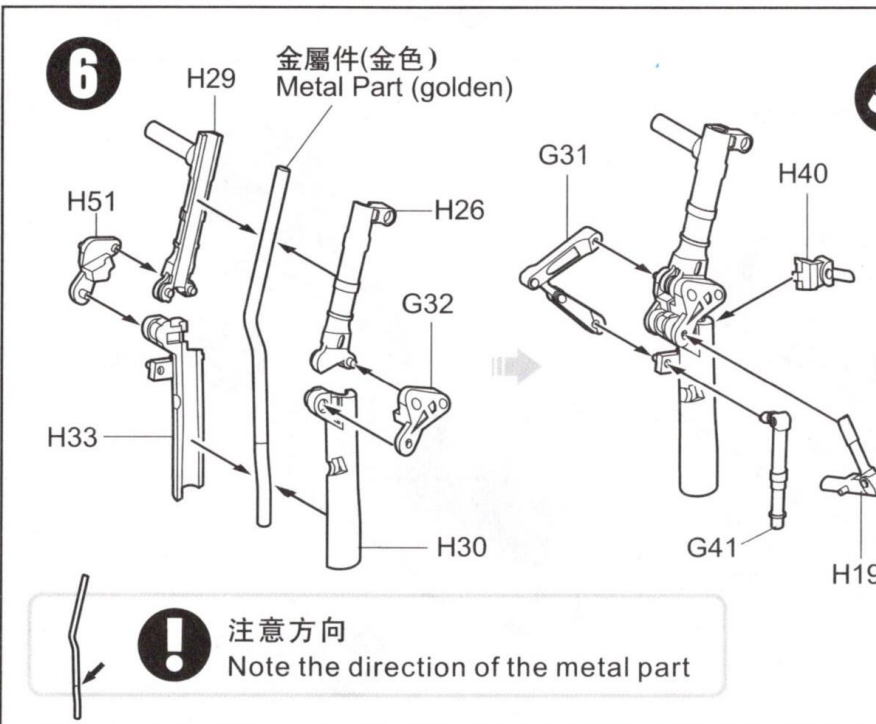
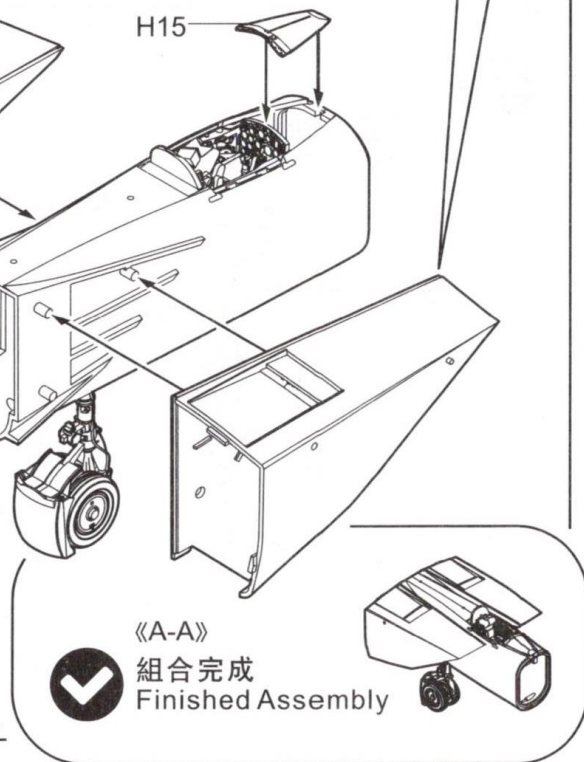
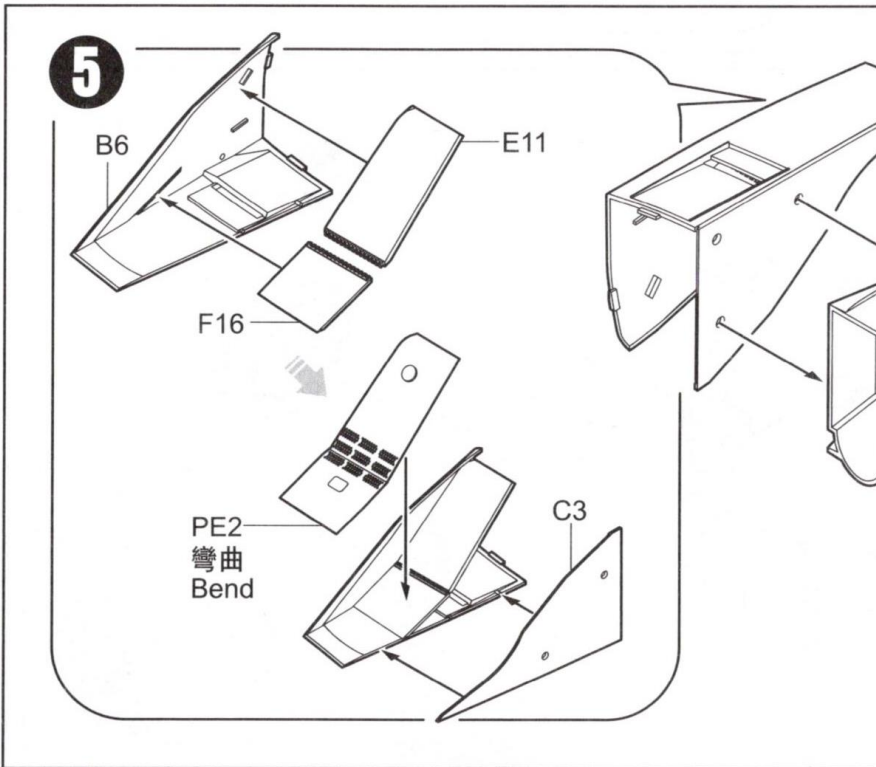
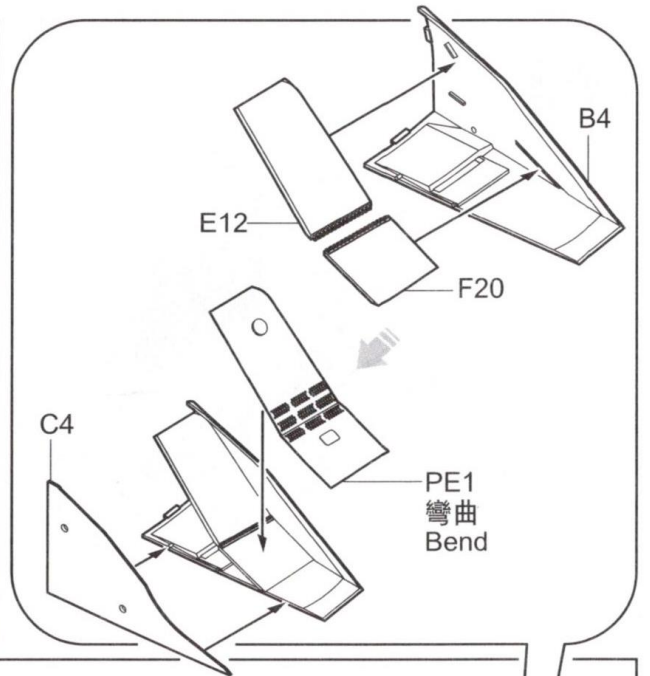
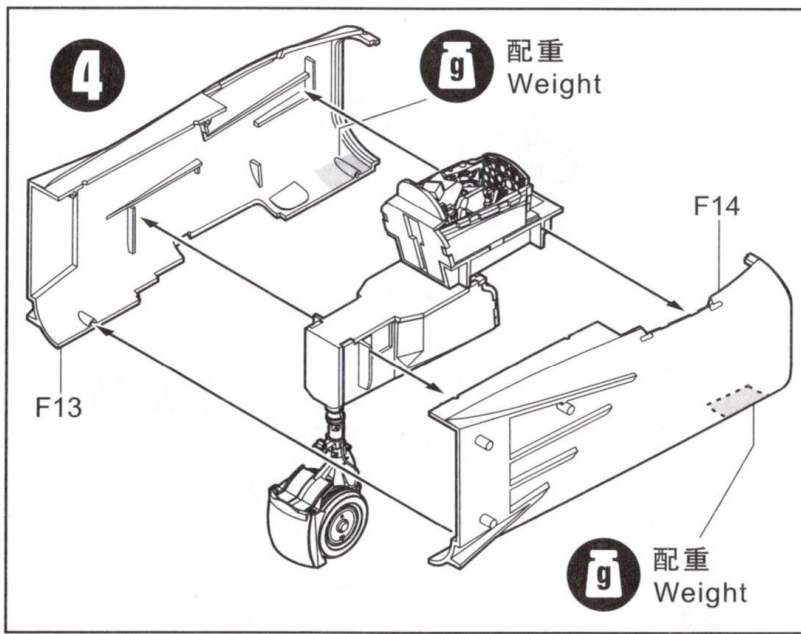
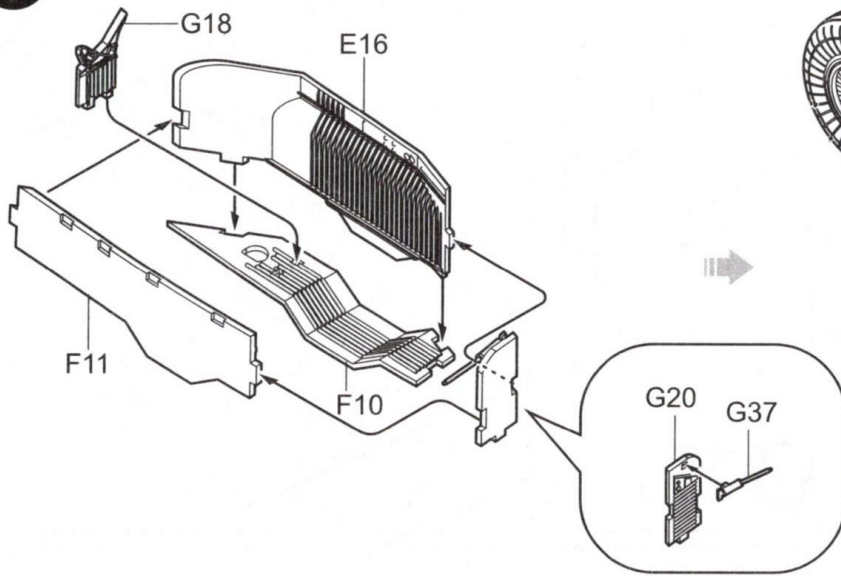


Illustration by Eric Chan
GUNZE SANGYO Mr. color used





7



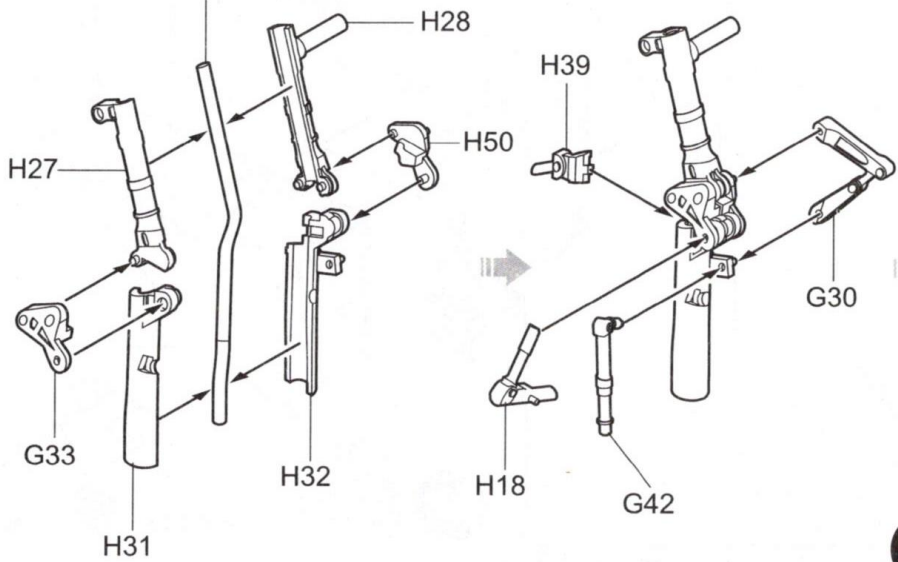
組合完成
Finished Assembly

《B-B》

C8
SILVER
銀色

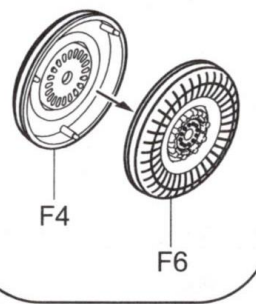
8

金屬件(銀色)
Metal Part (silver)

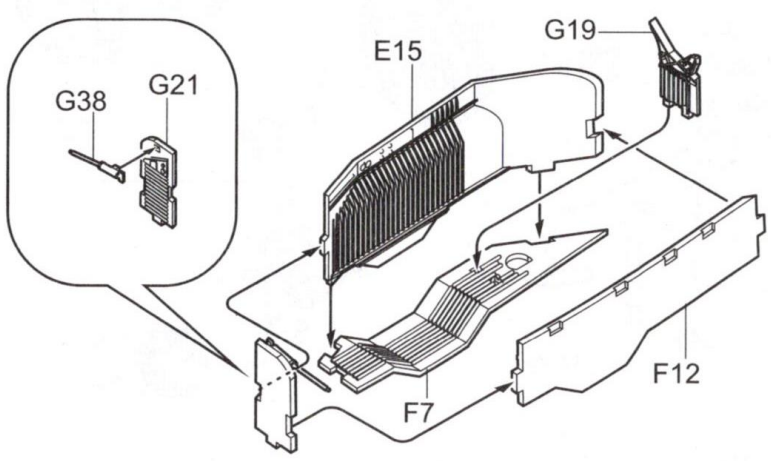


C137
TIRE BLACK
輪胎黑

C8
SILVER
銀色



注意方向
Note the direction of the metal part

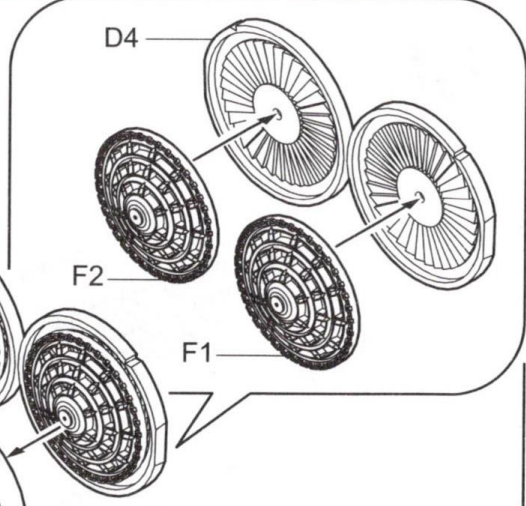
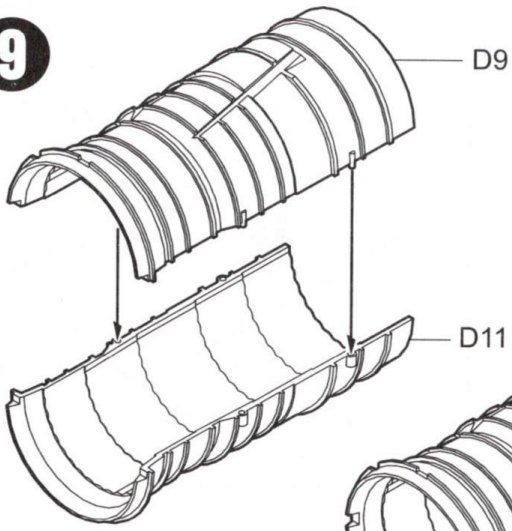


組合完成
Finished Assembly

《C-C》

C8
SILVER
銀色

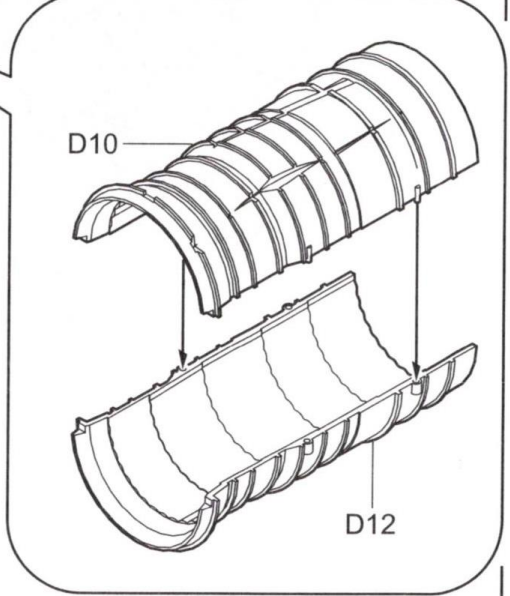
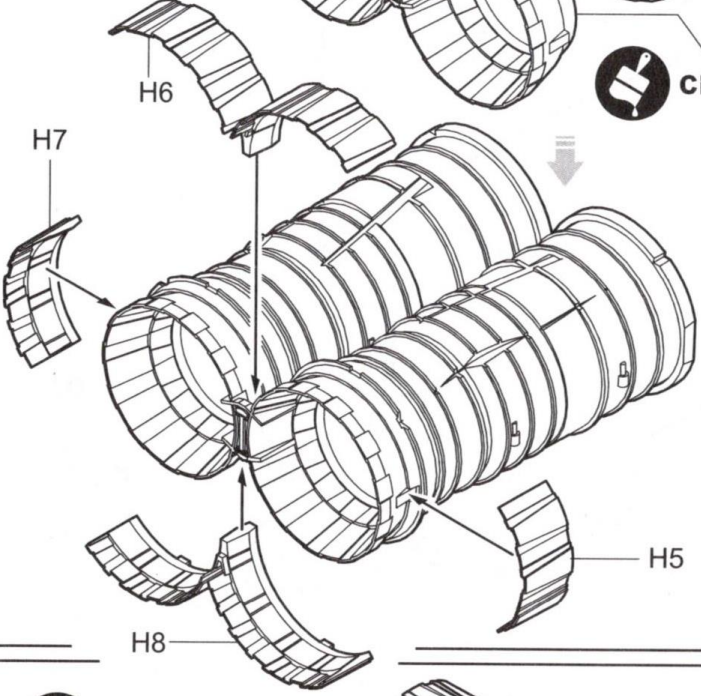
9



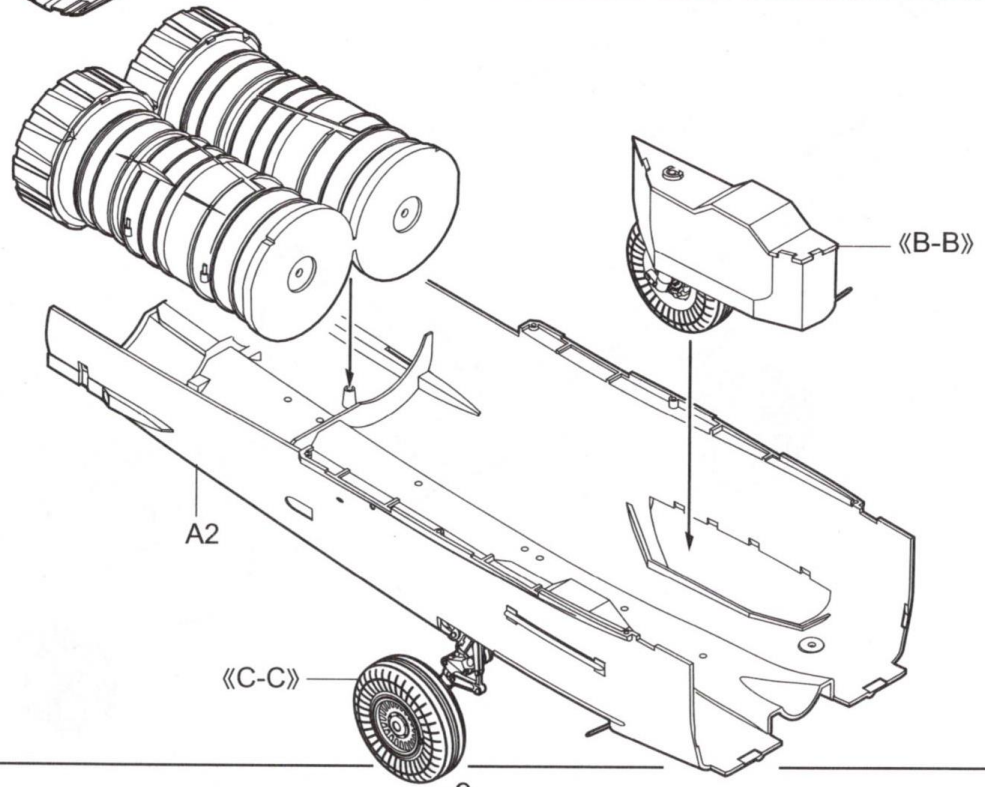
C61
BURNT IRON
燒鐵色

E14

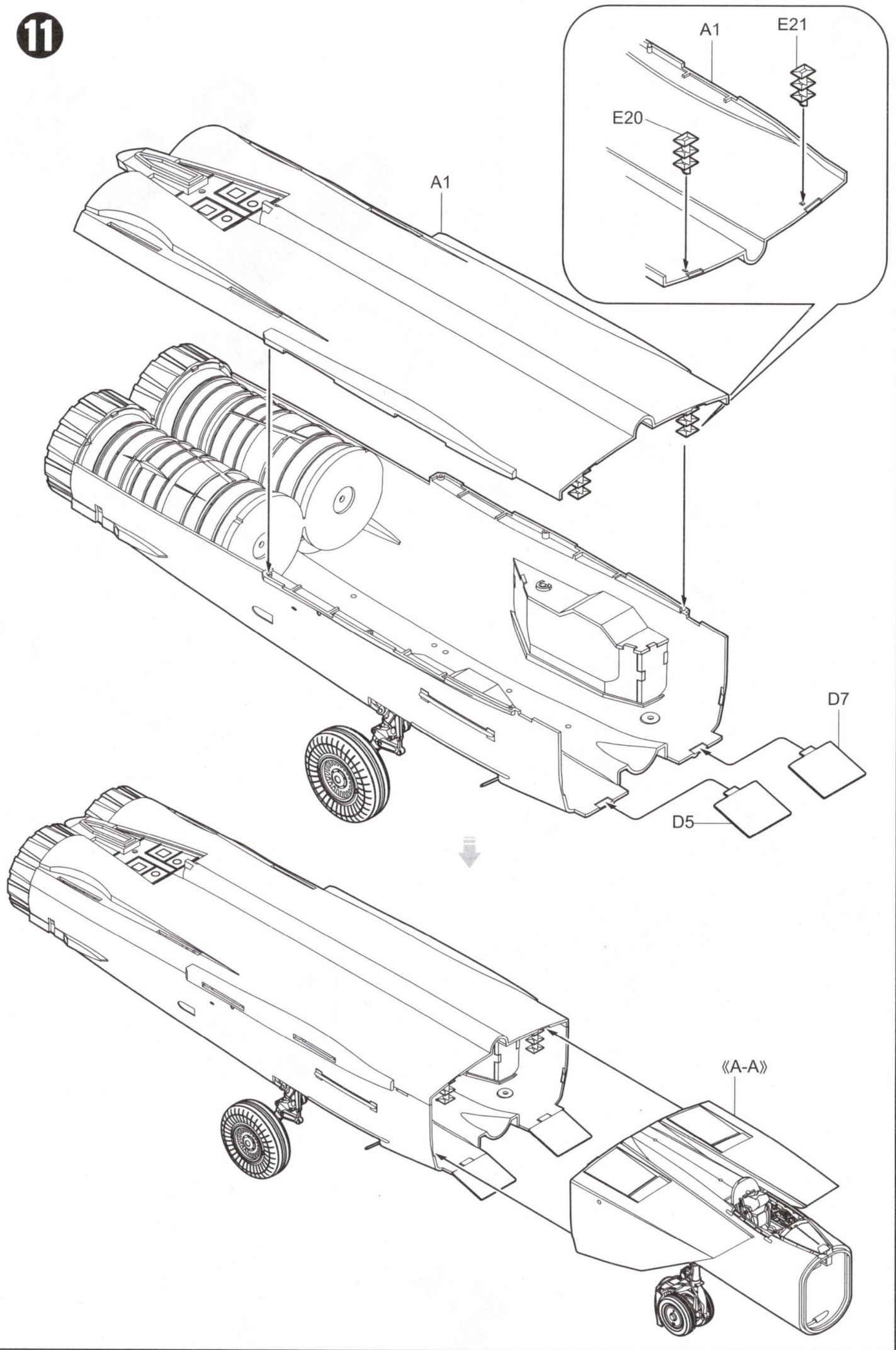
C136 RUSSIAN GREEN (2)
蘇軍綠(2)



10



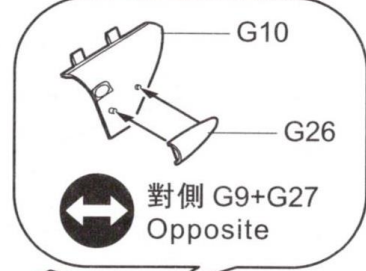
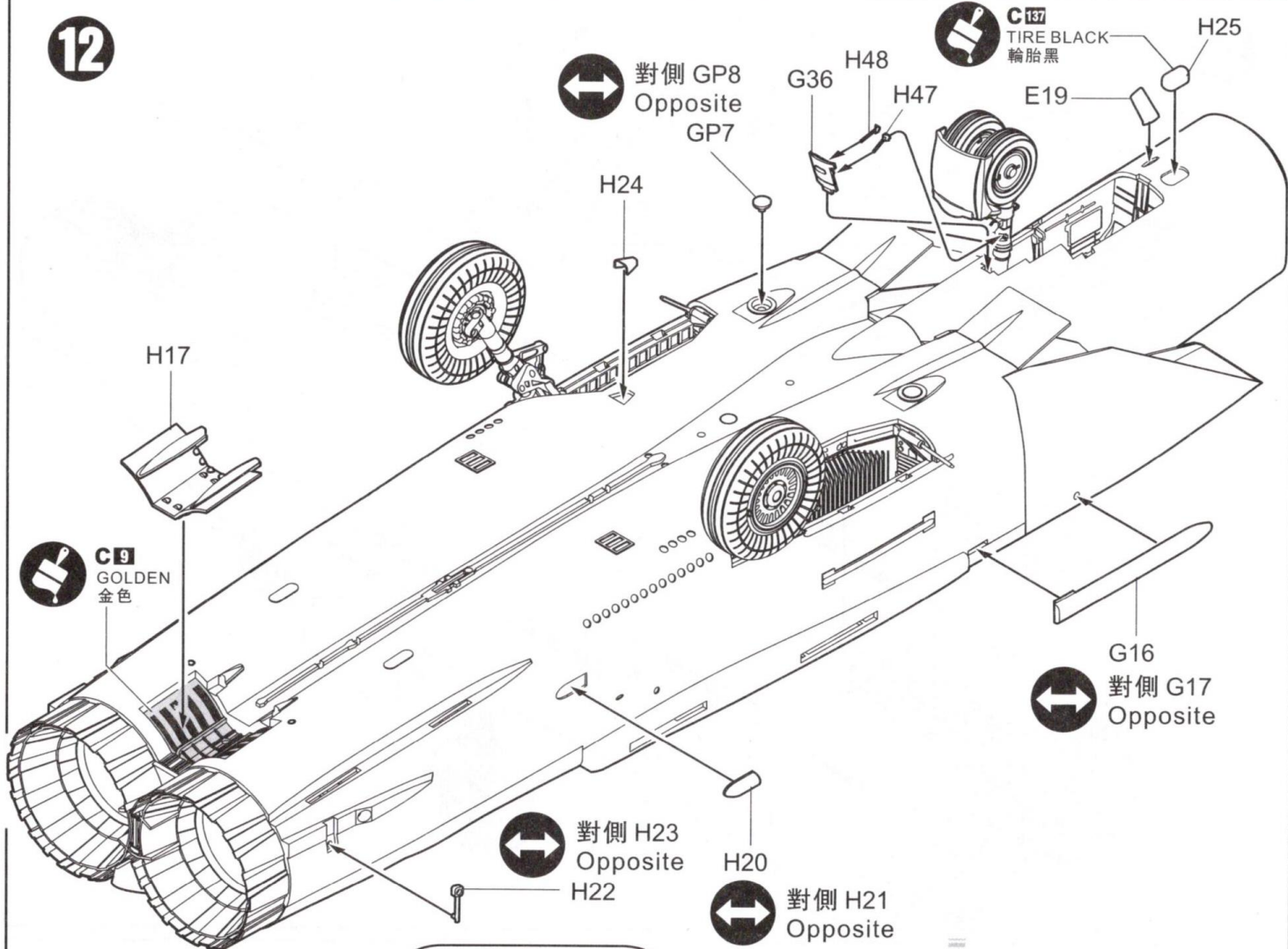
11



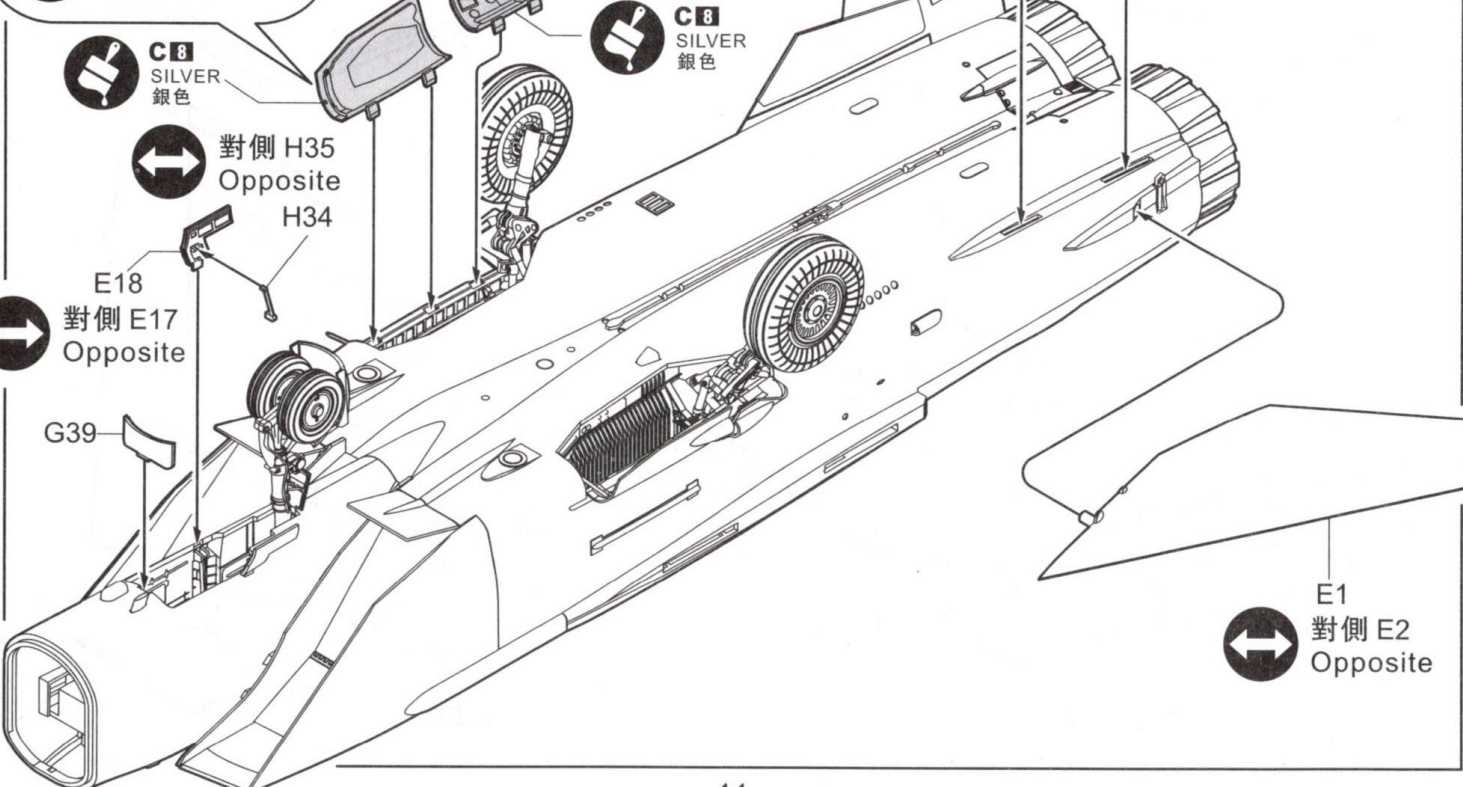
12

對側 GP8
Opposite
GP7

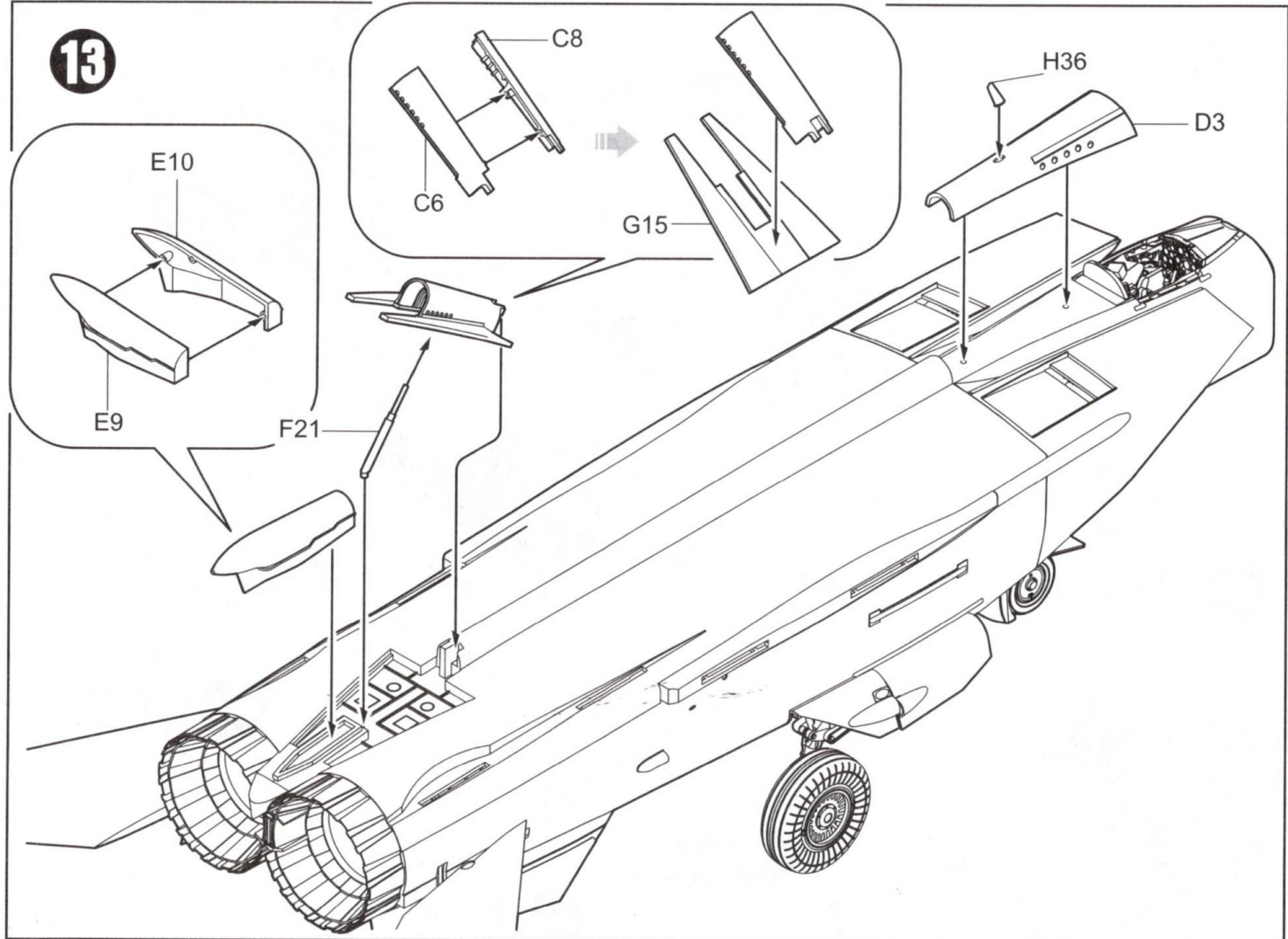
C137
TIRE BLACK
輪胎黑 H25



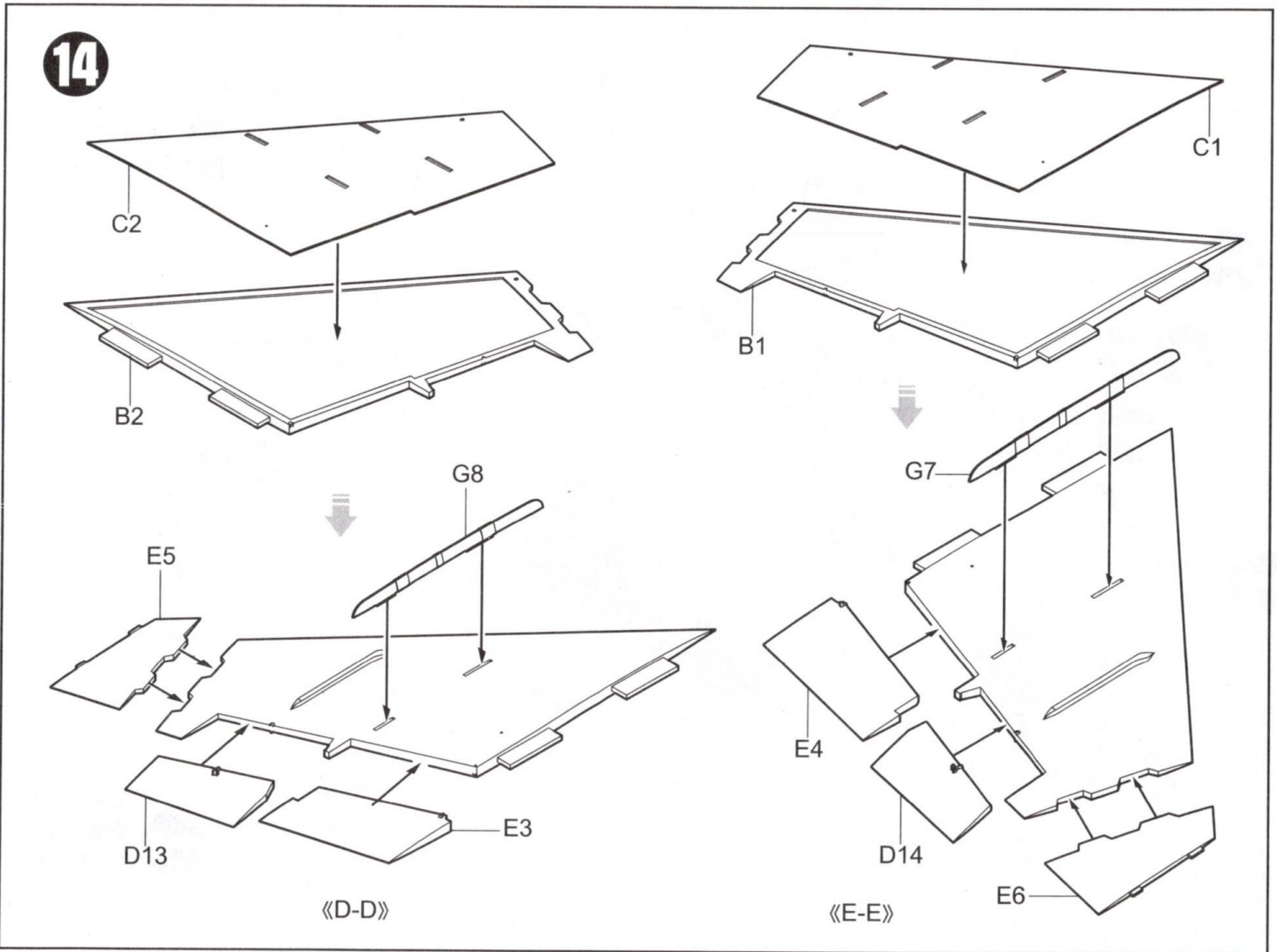
C5
對側 C7
Opposite



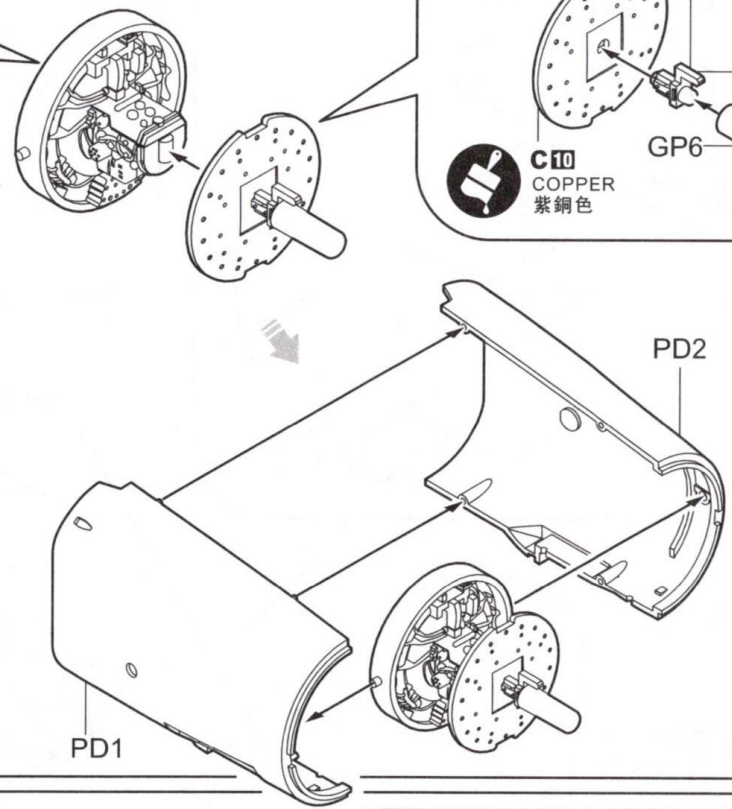
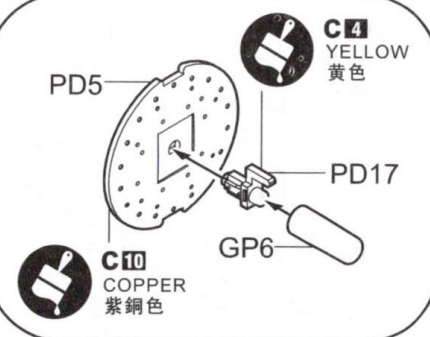
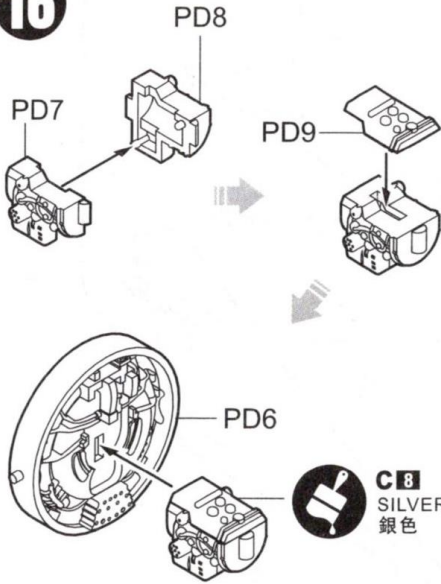
13



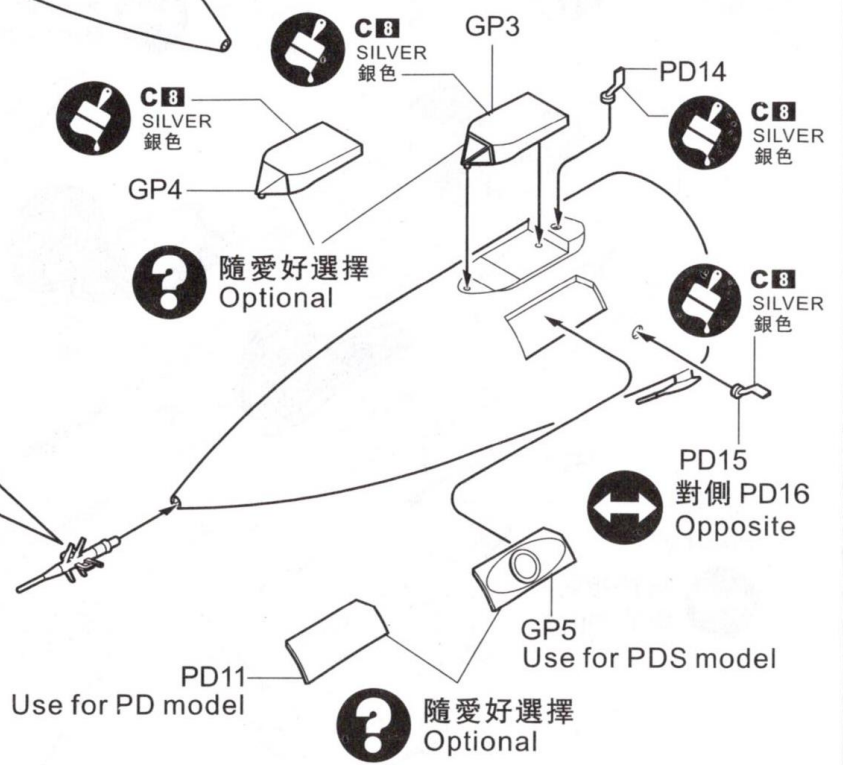
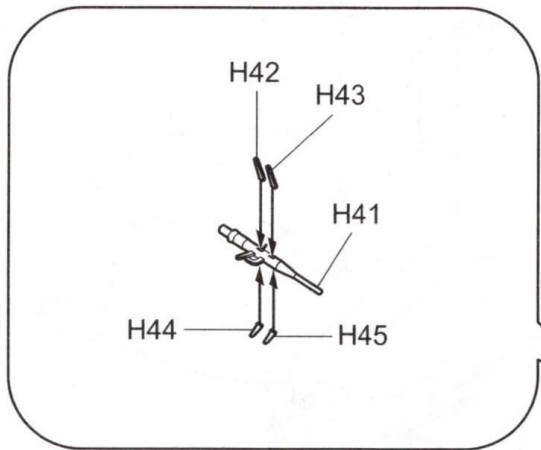
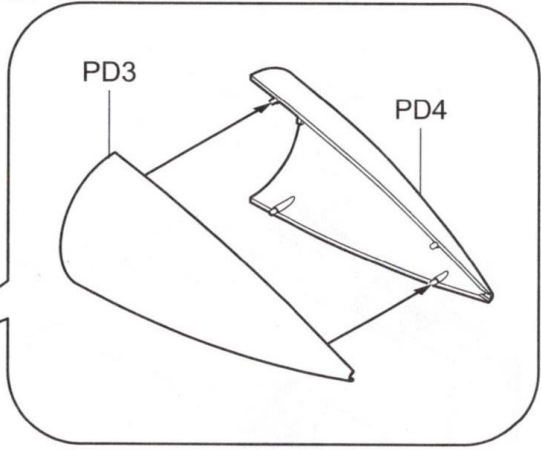
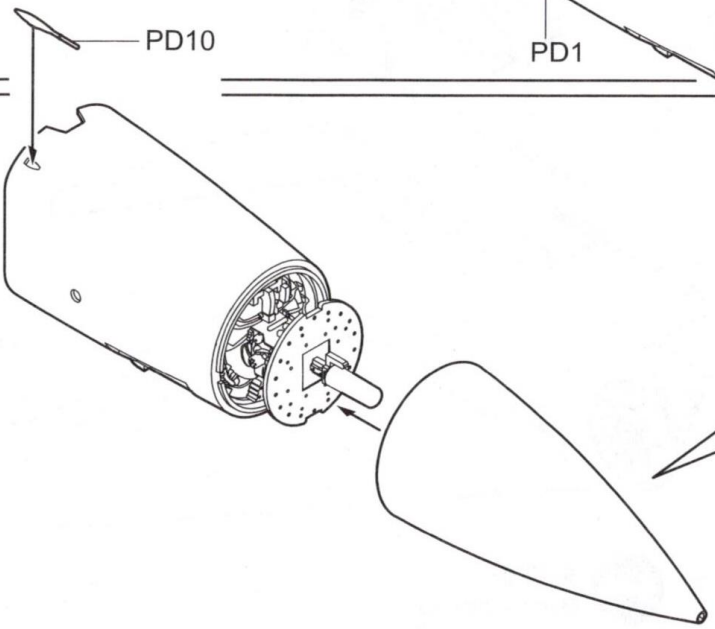
14

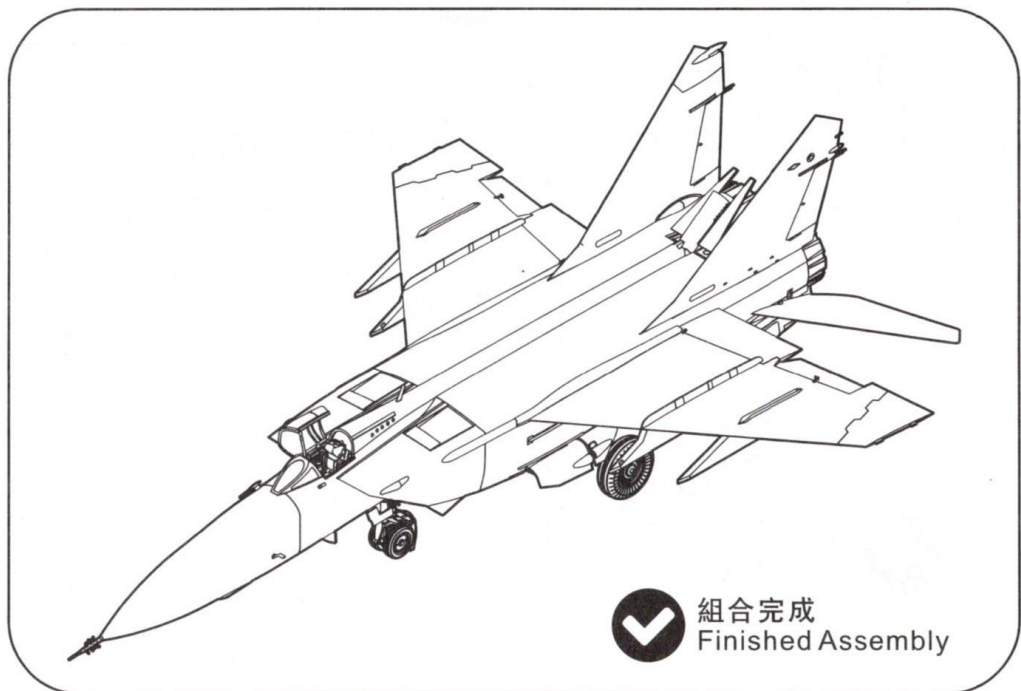
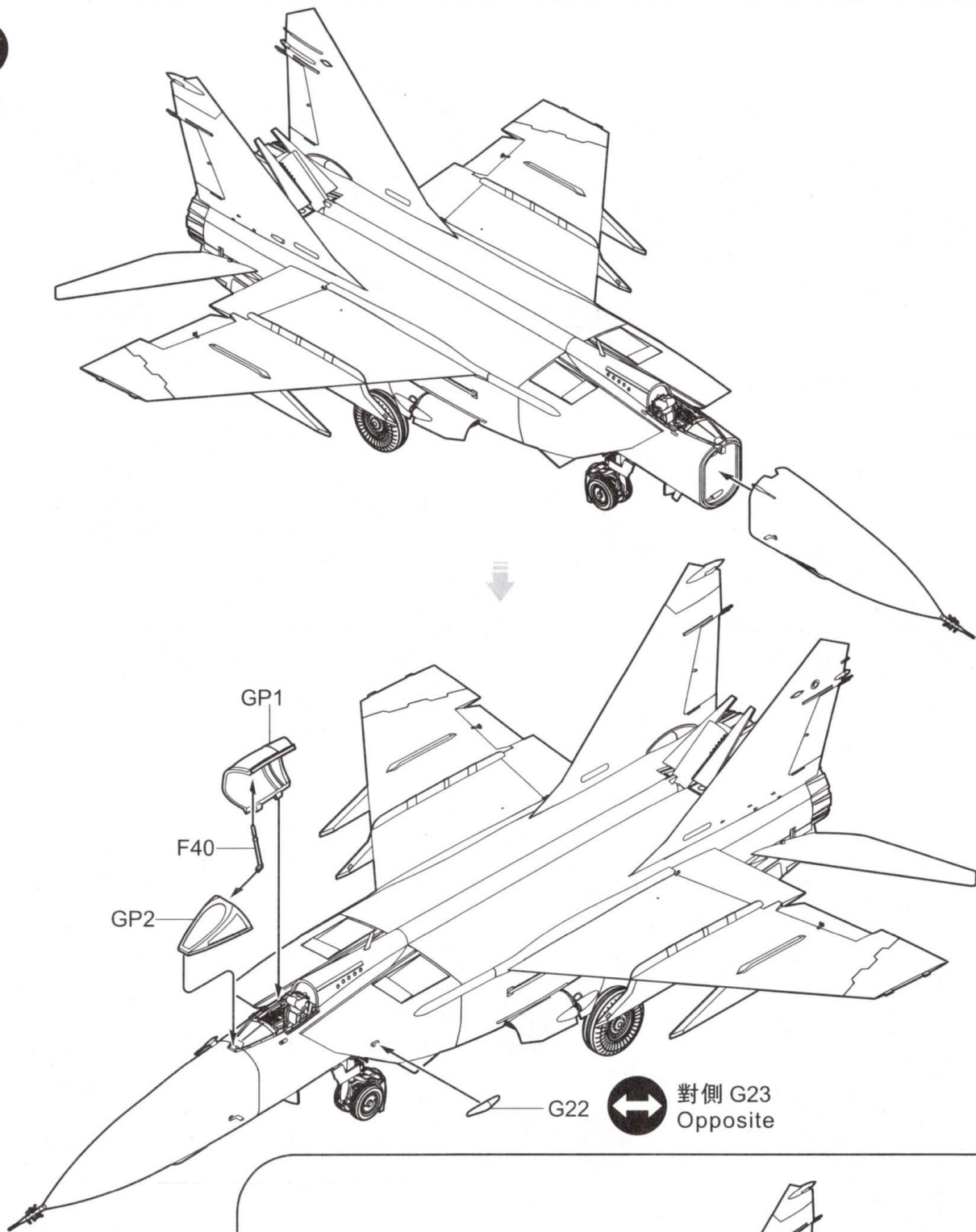


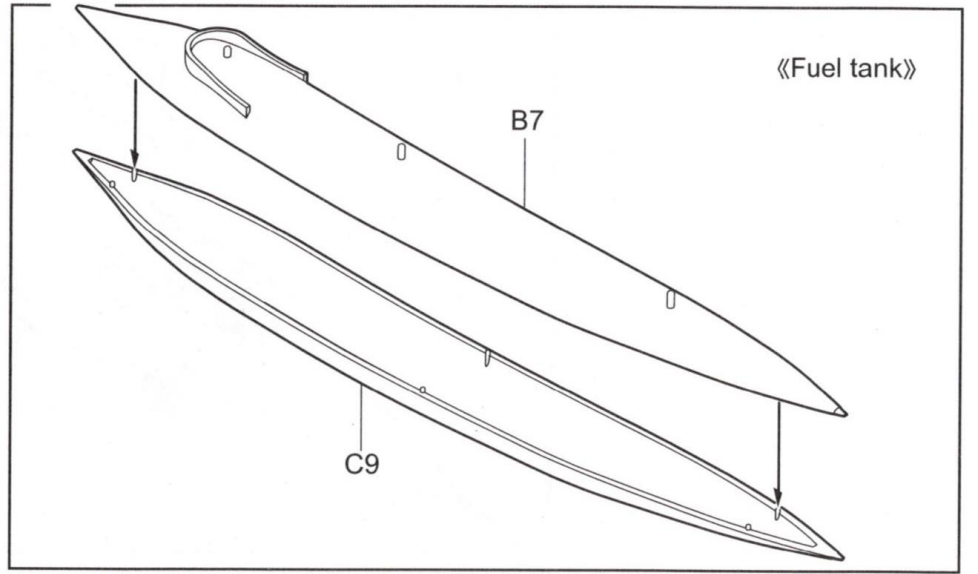
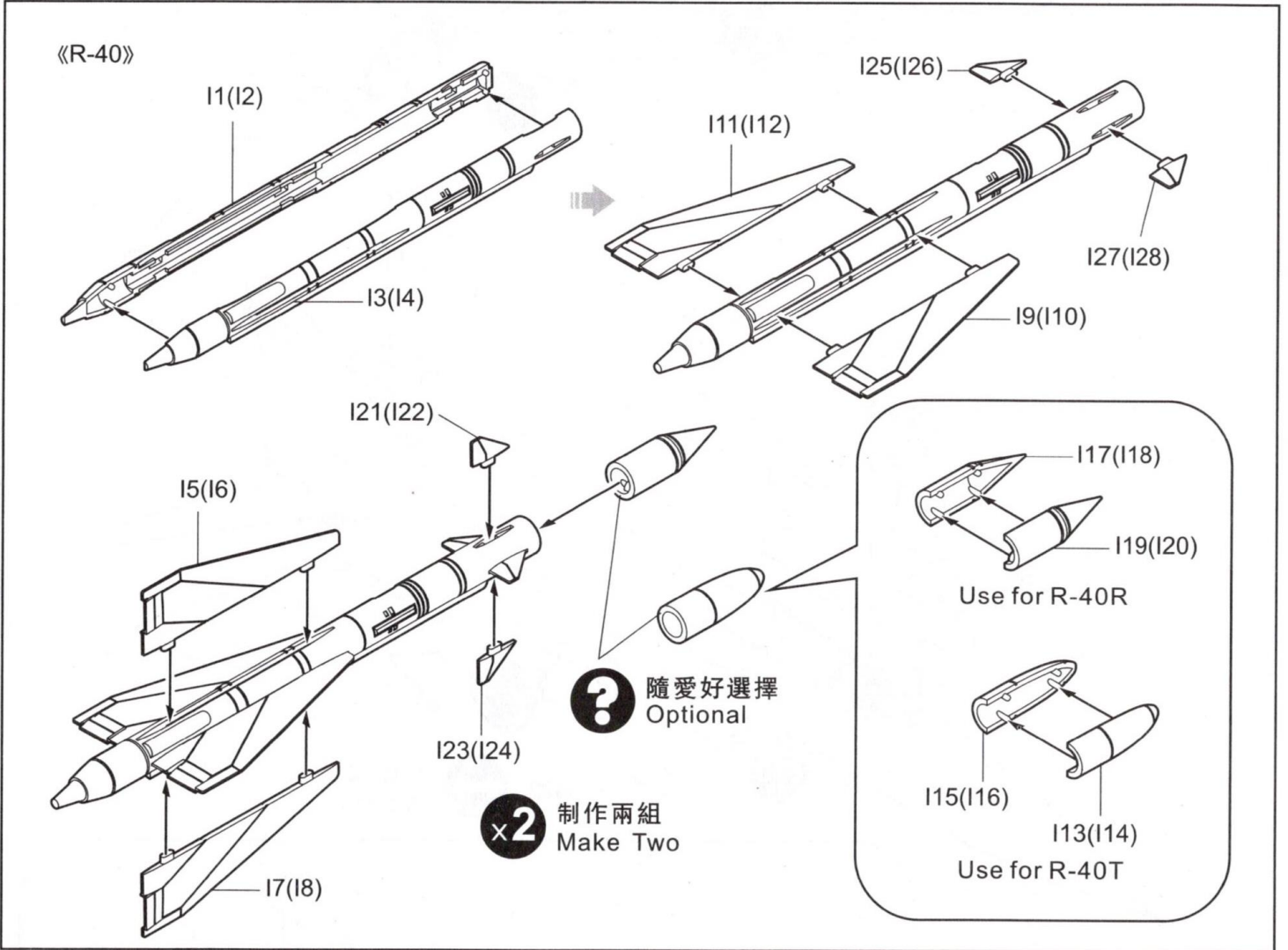
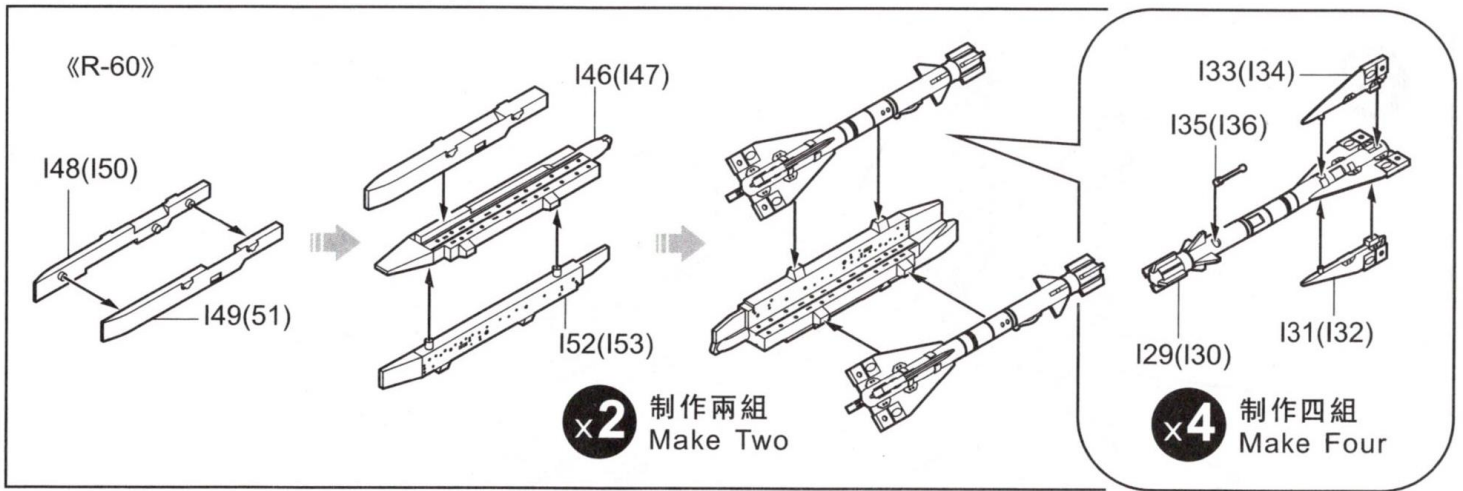
16



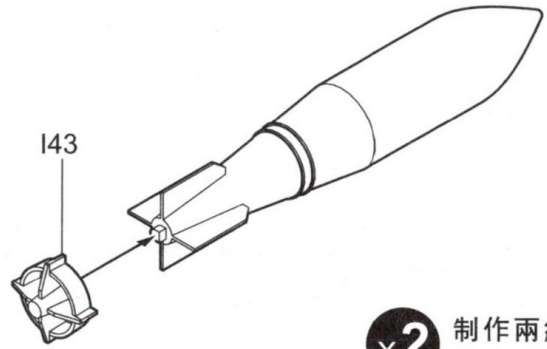
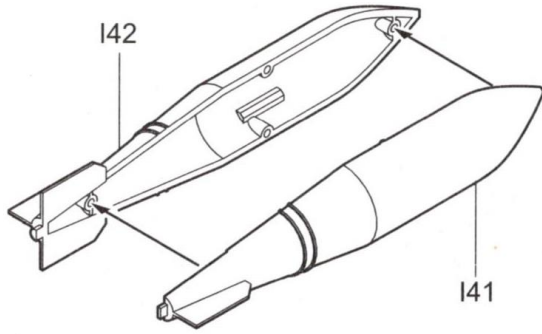
17





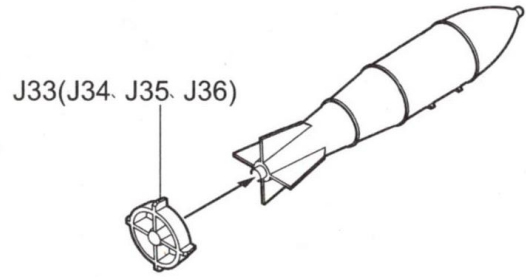
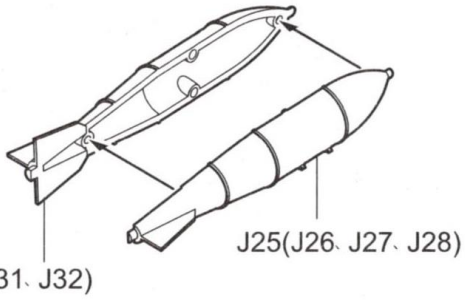


《FAB-1500》

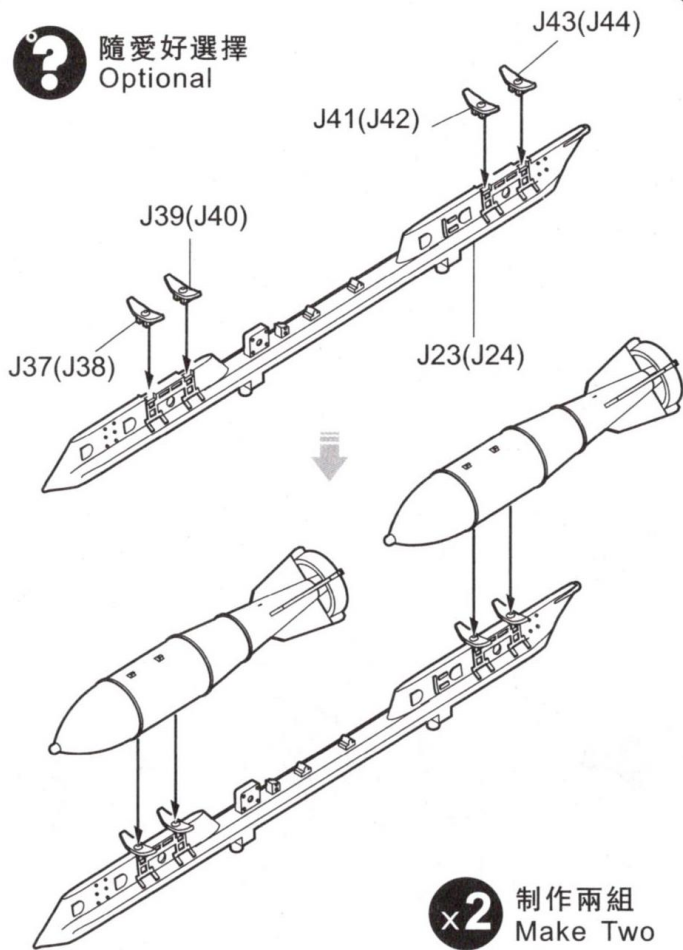


x2 制作兩組
Make Two

《FAB-500》

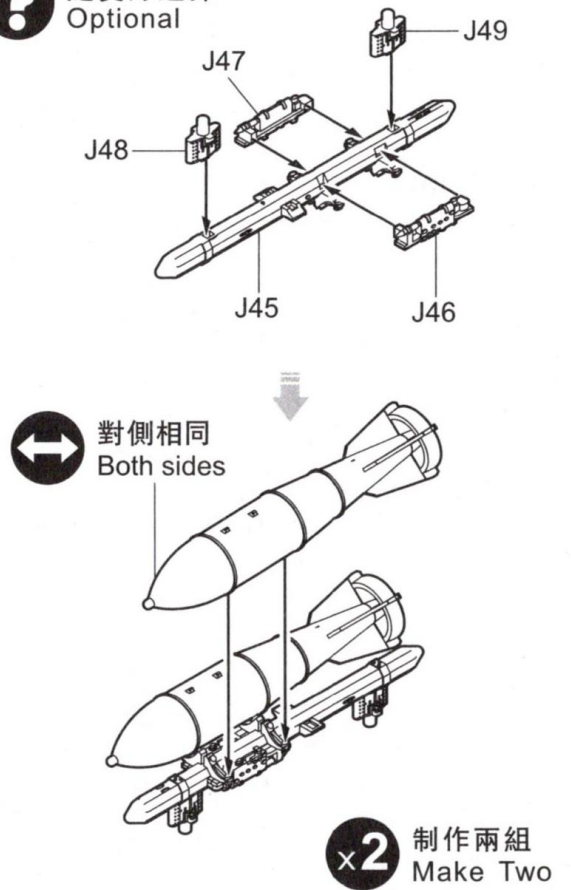


? 隨愛好選擇
Optional



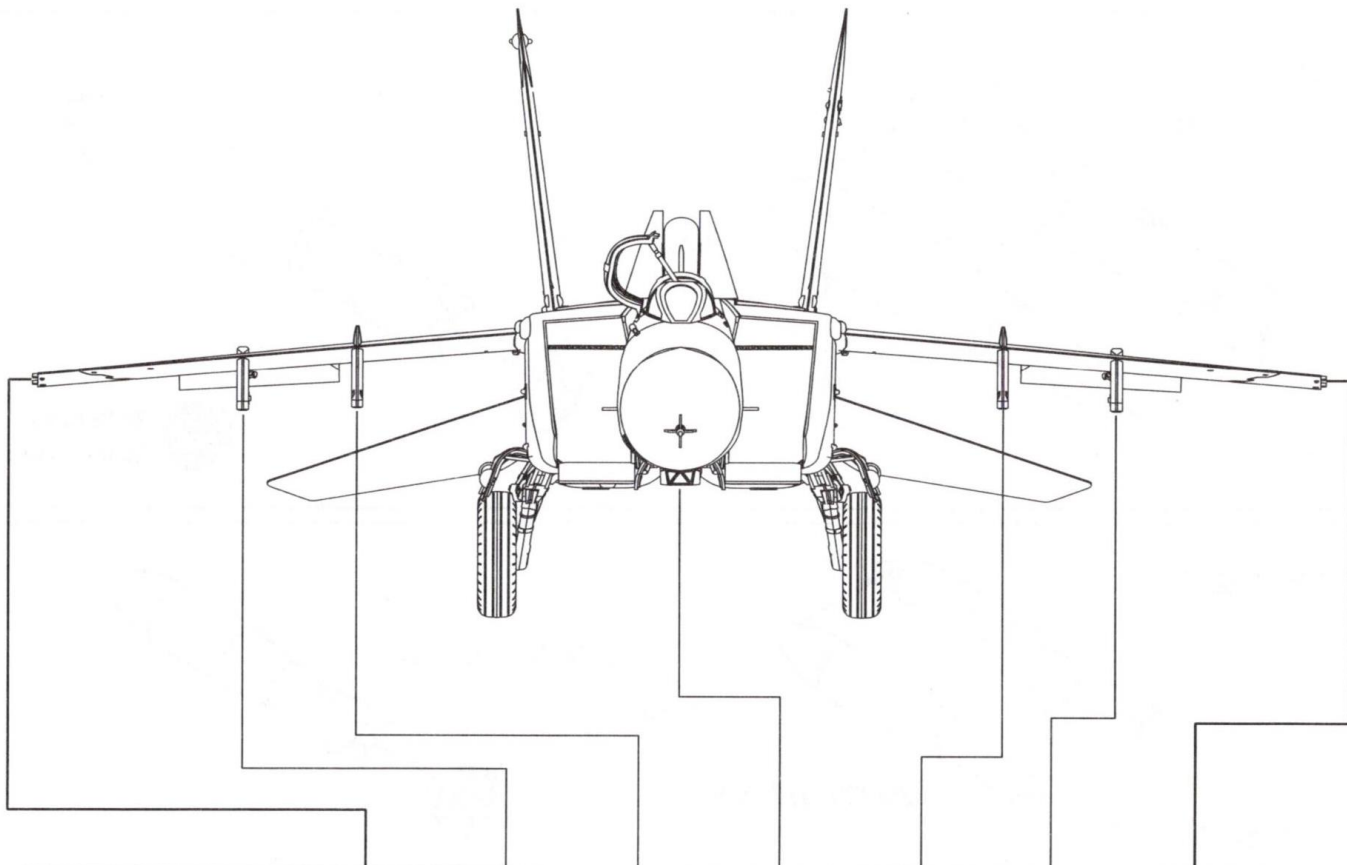
x2 制作兩組
Make Two

? 隨愛好選擇
Optional



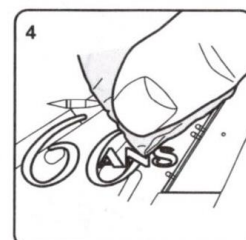
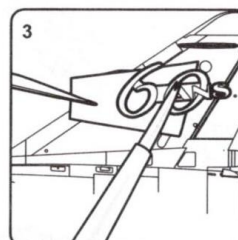
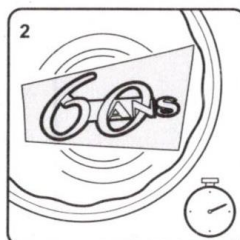
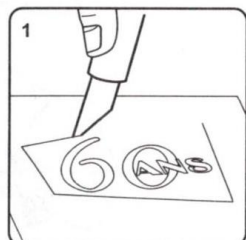
↔ 對側相同
Both sides

x2 制作兩組
Make Two



Sta.No.	1	2	3	4	5	6	7
Missle/Tank							
《EW pod》	●						●
《R-60》		●●				●●	
《R-40T》			●		●		
《R-40R》			●		●		
《Fuel tank》				●			
《FAB-1500》			●		●		
《FAB-500》			●●	●● ●●	●●		

DECAL APPLICATION



1. Cut off decal from transfer sheet.
2. Dip the decal in water for about 10 seconds (may take more seconds if in low temperature), and place on a clean cloth.
3. Hold the backing paper edge and slide decal onto the model. Then move decal into position by wetting decal with brush or finger.
4. Press decal gently down with a soft cloth until excess water and air bubbles are gone.

