

This detail set was specifically designed to fit Italeri kit no.368, "OPEL BLITZ EINHEITSKOFFER FIELD RADIO TRUCK." Because no reliable reference material was available to us on this specific vehicle at the time of development, the basic layout of the interior is based loosely on that of the multi-purpose house type body. The idea of this set is to provide enough parts necessary to build a field-conversion vehicle. The diagram in Fig. 5 of these instructions simply shows one of many possibilities. The diagram can be followed, or you can re-arrange the components to make your own unique field radio conversion.

We strongly recommend that you read and understand these instructions fully before attempting to assemble this detail set.

Resin part#2 is a spare door-panel which can be used to show one of the two doors opened on the truck body. Photo-etched parts#17 are spare door hinges to replace those that are removed from the plastic kit parts. These can easily be bent.

Resin parts#18 are black-out curtains located above each of the six windows.

Resin part#15 is a leaf-extension for the large table (resin part#14). This can be cemented in the extended or folded position. Photo-etched parts#21 are the hinge-brackets for this item. Use plastic rod for the table legs.

Resin parts#11 are lamp-heads, and photo-etched parts#14 are the arms. Photo-etched parts#12 are the wall-mounting brackets. These can be installed on virtually any vertical surface on the interior of this truck body.

Photo-etched parts#16 are replacement parts for kit parts #103B. Bend according to the etched lines.

Photo-etched part#18 is a direct replacement for kit part#116B ladder holder. Bend according to the etched lines.

Photo-etched part#20 is a direct replacement for kit part#119B.

Resin parts#28, 29, & 30 make up the mast for the "teleskopantenne", with #30 being the base, and 29 being the cap. Photo-etched parts #22 are the wheels, which sandwich resin parts#34. Photo-etched parts#15 are to be bent so that they wrap over the wheels, and resin parts#35 are the handles. Cement these subassemblies to the mast opposite each other on the raised discs. Photo-etched part#13 is the crank-handle arm, which is located on the center of the lower portion of the gearbox. Use a piece of plastic rod for the handle itself. This whole assembly fits neatly into the location of the kit part, and looks much better than the latter.

References:

WINGS & WHEELS PUBLICATIONS
PHOTO MANUAL FOR MODELERS
OPEL BLITZ in detail
German WWII truck in Czech private collections
ISSN 1211-0671

Schiffer Military History Vol.32
OPEL AT WAR
GERMAN TRUCKS & CARS IN WORLD WAR II VOL. III
Eckhart Bartels
ISBN: 0-88740-309-3

- Indicates Photo-etched part
- Indicates Resin part

Fig. 1

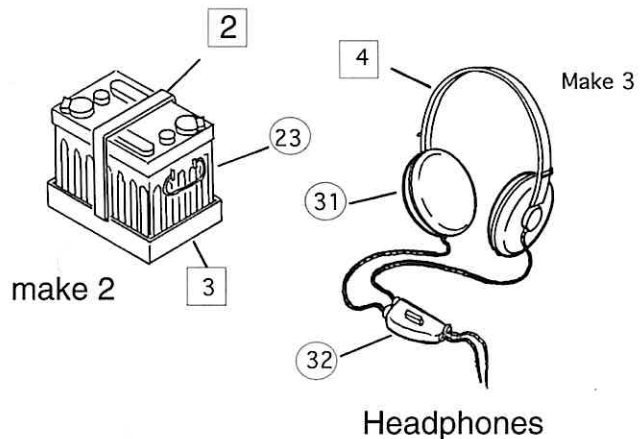


Fig.2

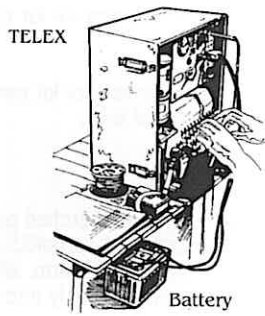
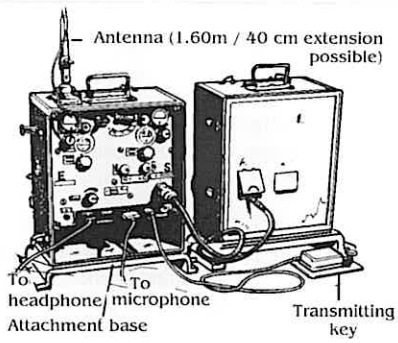
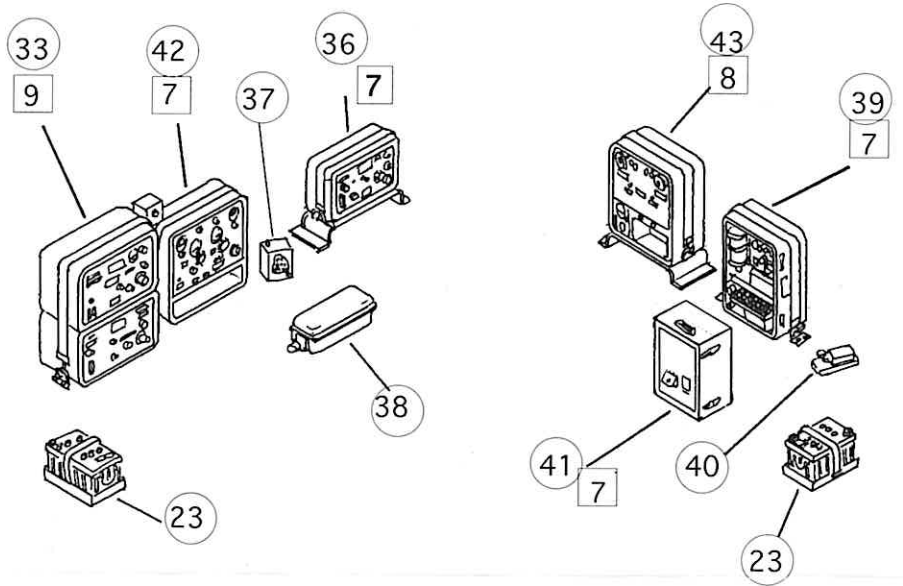
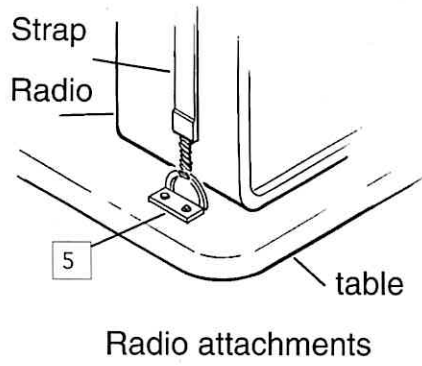
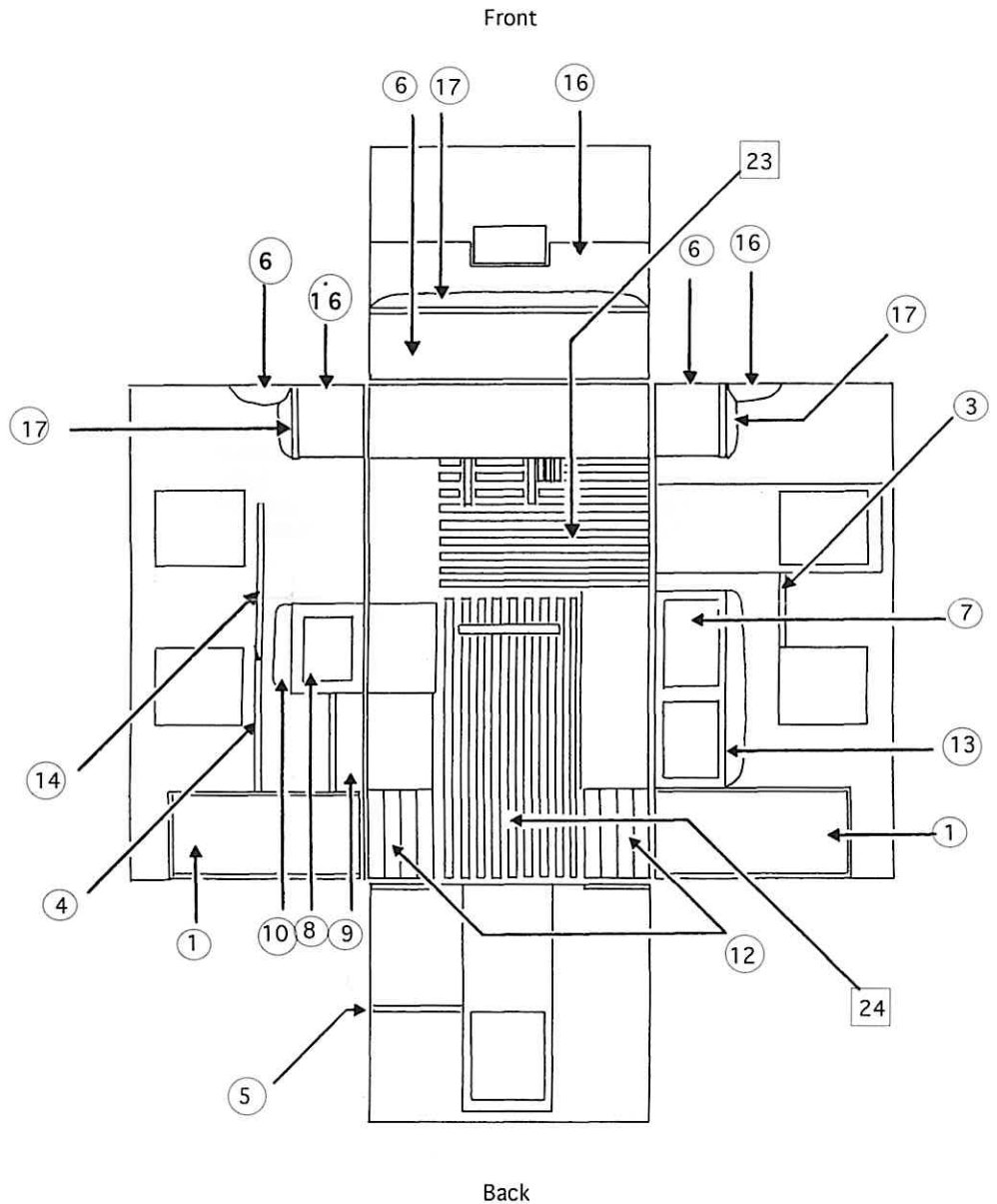
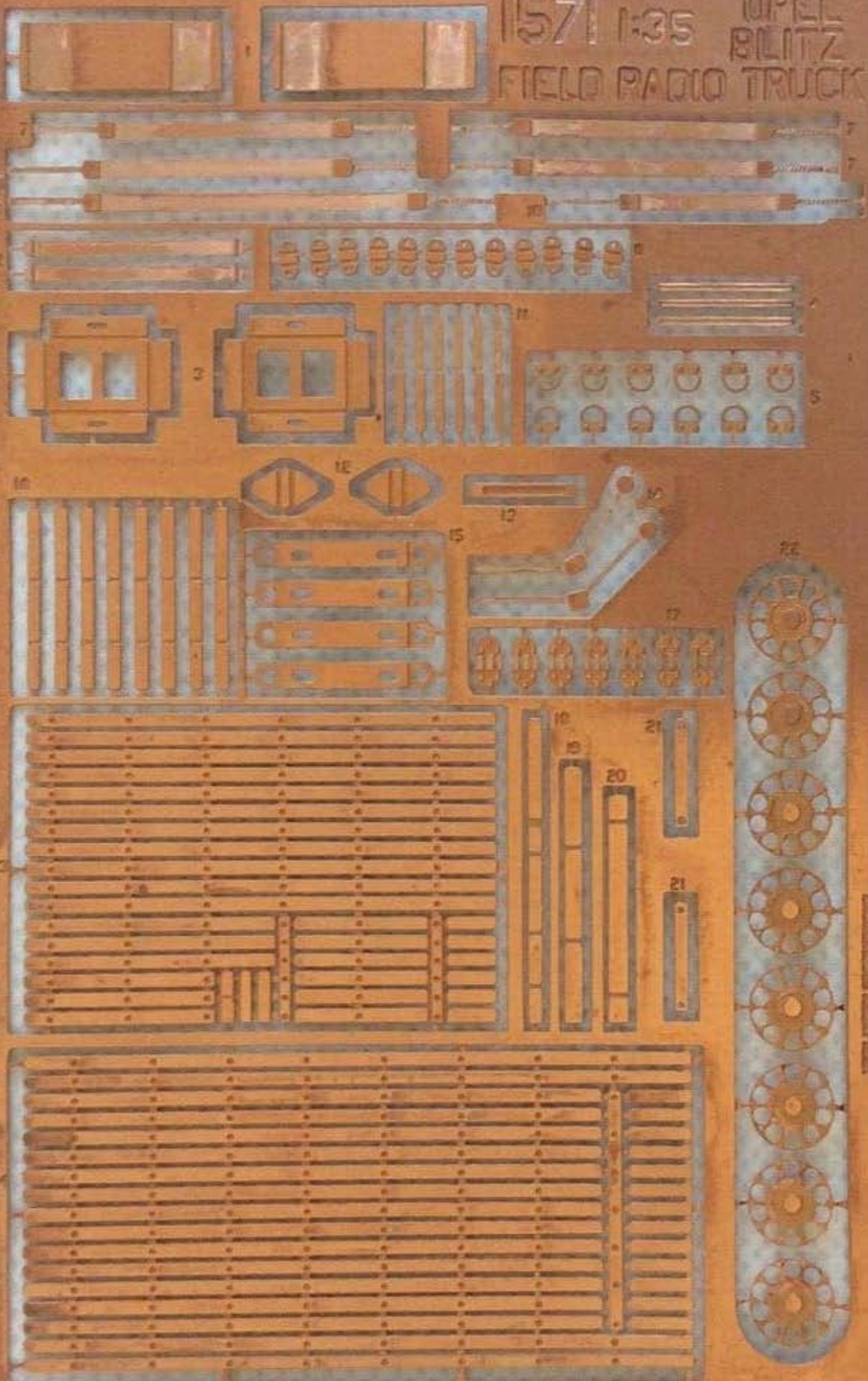


Fig.5



1571 1:35 OPEL
BLITZ
FIELD RADIO TRUCK



METAL PARTS MADE IN BELGIUM