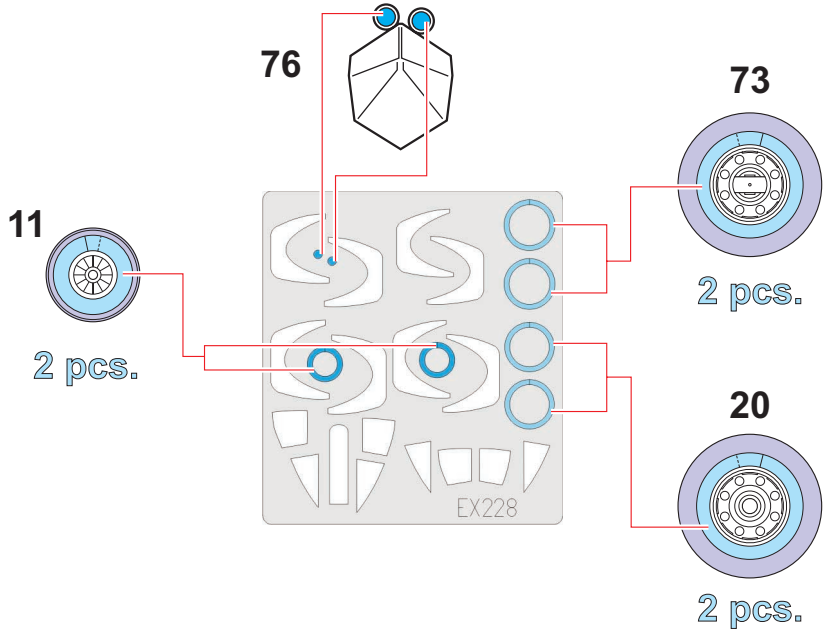
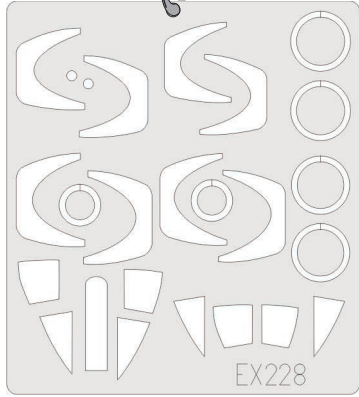


eduard  
MASK

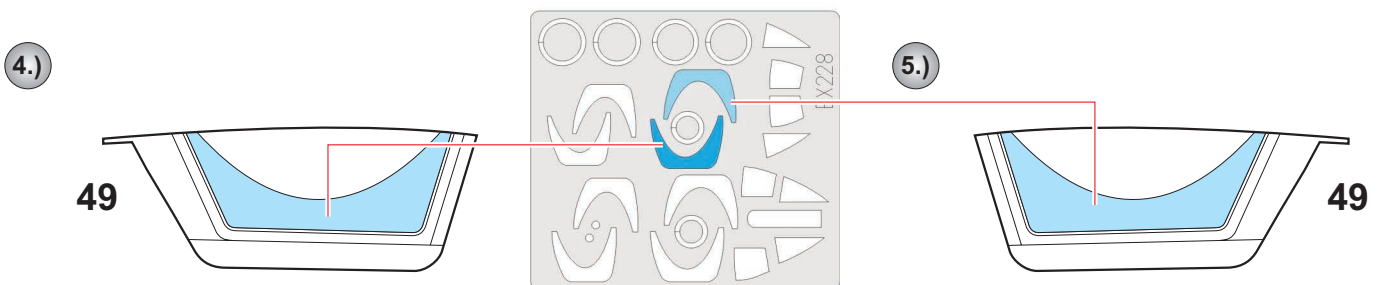
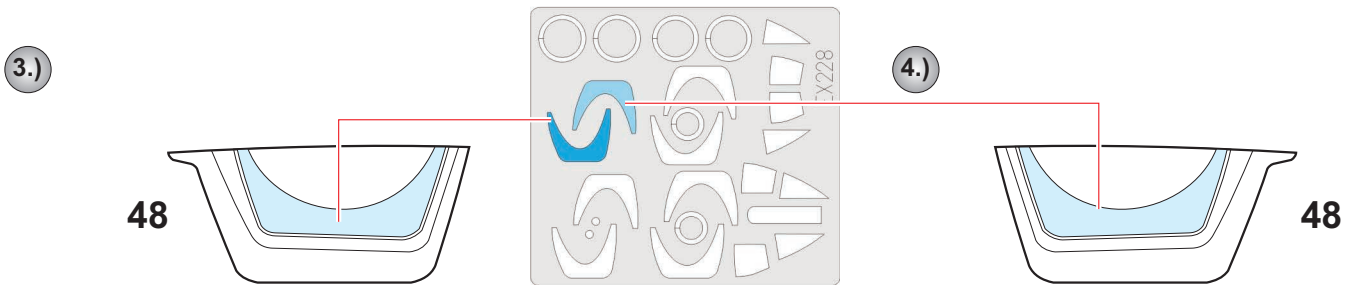
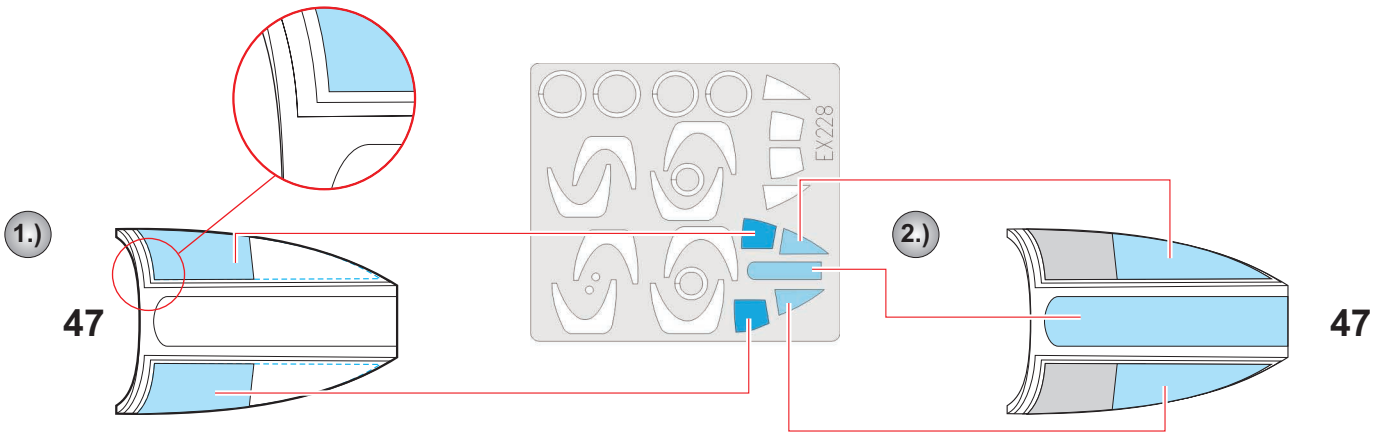
EX 228

# F-105G Thunderchief 1/48

The die-cut mask for accurate canopy frame painting of the  
*Revell* scale 1/48 KIT

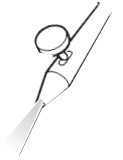


■ - LIQUID MASK

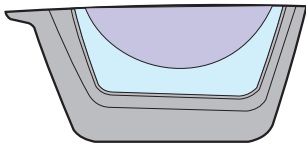


7.) INTERIOR COLOR

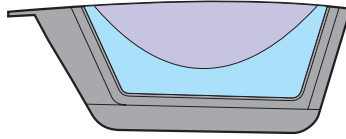
■ - LIQUID MASK



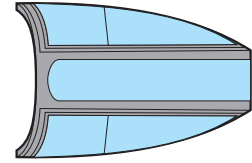
48



49



47

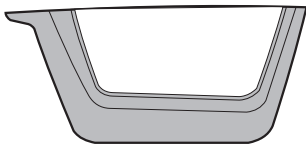


8.) RUBBER COLOR

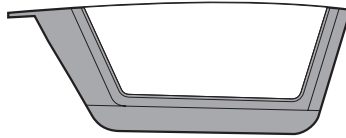


9.) REMOVE MASK

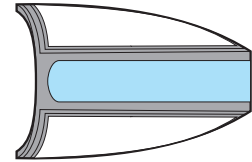
48



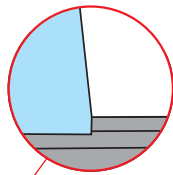
49



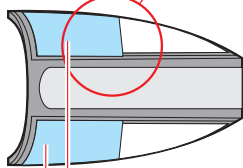
47



10.)

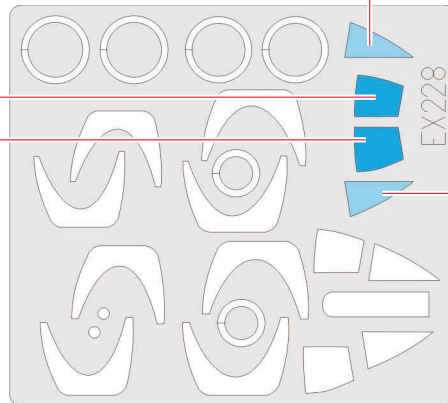
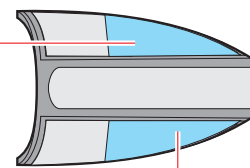


47



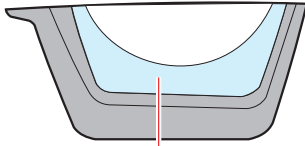
11.)

47



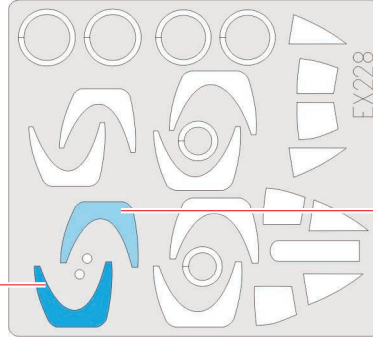
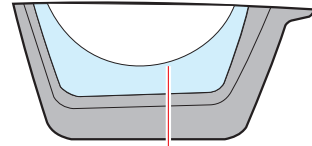
12.)

48



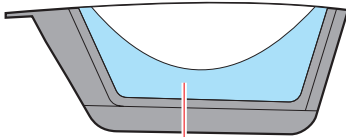
13.)

48



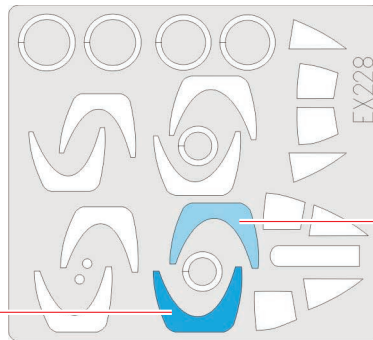
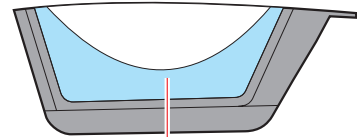
14.)

49



15.)

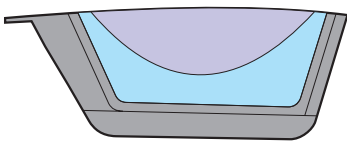
49



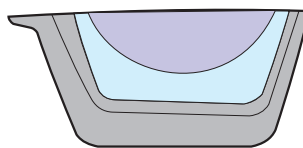
16.)

### CAMOUFLAGE COLOR

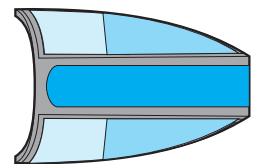
49



48



47



### REFERENCES:

Squadron/Signal Publ.: Walk Around # 3 - F-105 Thunderchief  
Warbirdtech Series #18 - Republic F-105 Thunderchief