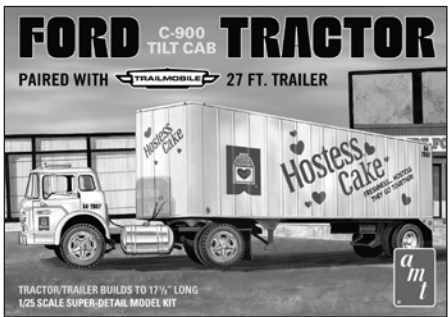


MORE GREAT TRUCK & TRAILER KITS FROM THE KATS AT



AMT1272/06: GMC® General



AMT1221/06: Hostess®/Ford C-900 Tractor with Trailer



AMT1215/06: Kenworth/Challenge Transit Mixer

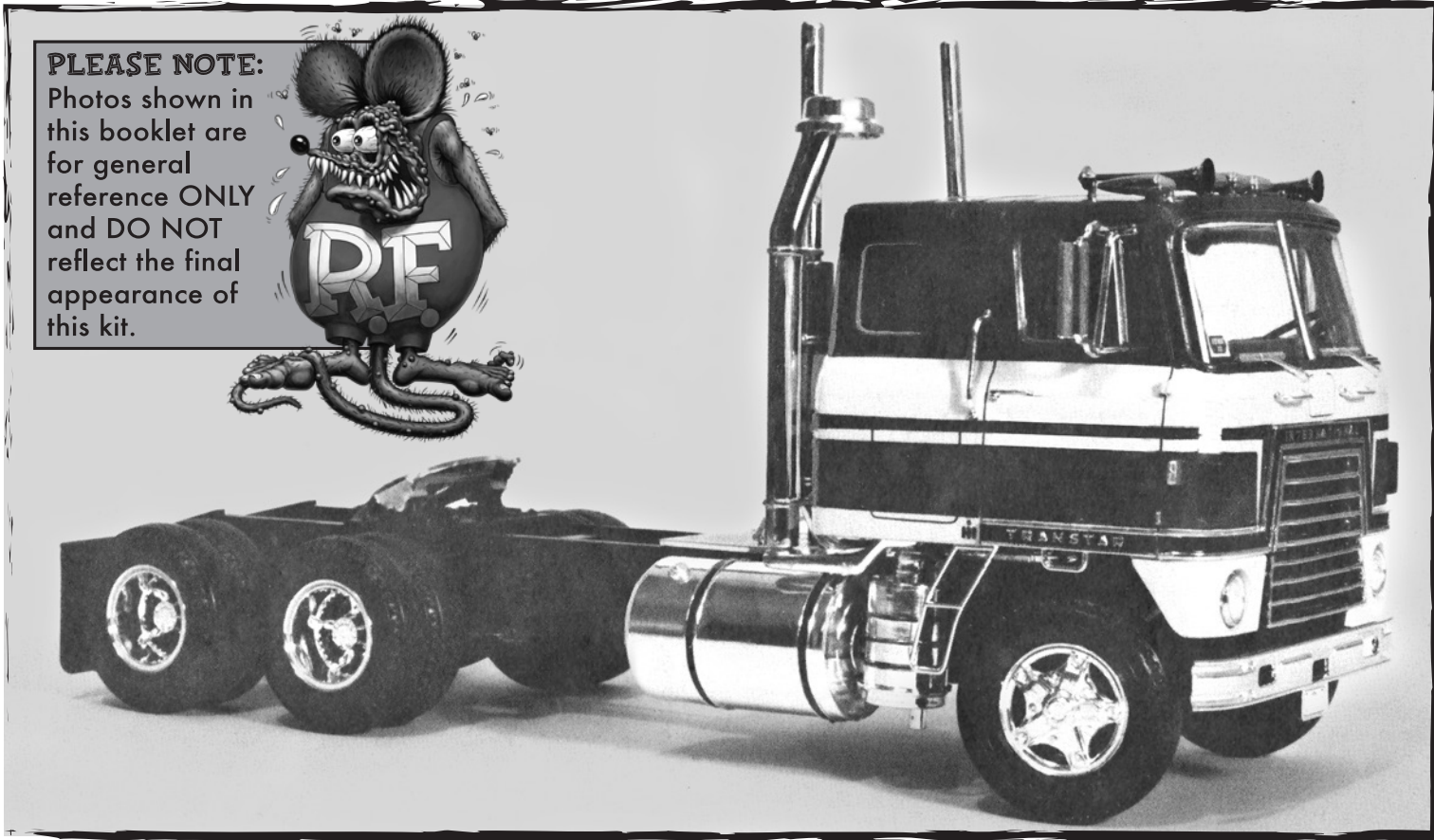


AMT1239/06: Sunoco® / Fruehauf "Plated" Tanker



1/25 SCALE

This 1/25 scale International Transtar CO-4070A is precisely patterned after the famous road hauler built by the International Harvester Company Truck Division. Well over 250 precision plastic parts come together to produce a beautiful model of what was probably the most famous and widely used truck tractor in the United States. We recommend that you carefully study the parts and instructions before beginning construction. Work slowly and carefully. The result will be one of the most detailed scale models you have ever built...the famous International Transtar CO-4070A with a Rat Fink™ twist.



READ THIS BEFORE YOU BEGIN

Cement all parts unless otherwise indicated.

Look over this instruction sheet carefully before you begin building. Follow the assembly instructions and "test-fit" the parts without cementing. This will familiarize you with the location of the parts.

For the best results, the various sub-assemblies and components should be painted before any "chrome" parts are attached. For example: When attaching "non-chrome" body accessories, it is best to cement them in place and paint the body as a unit.

AMT® kits are molded from the finest High-Impact Styrene plastic. Use only paint and cement made for Styrene. Trim excess plastic from parts before joining. When attaching "chrome" parts, scrape plating away where parts are to be joined. Use just enough cement to join parts, and be careful not to smear cement on exposed surfaces.

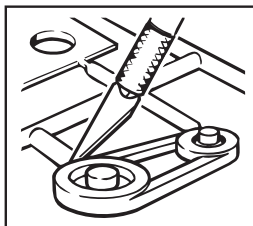
Built according to the instructions on this sheet, you should have no trouble assembling your kit.

- ☐ 37 . . . indicates white part
- ☐ 145CR . . . indicates chrome part
- ☐ 12CL . . . indicates clear part
- ☐ TR . . . indicates transparent red part
- ☐ A1TA . . . indicates transparent amber part

You are about to work with a checklist instruction sheet. As each part is applied take a pencil and put a check mark in the box in front of each number. In this way you can see what you have done and what you have not.

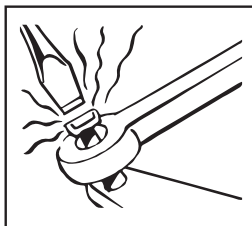
MODELING TIPS

HOBBY KNIFE



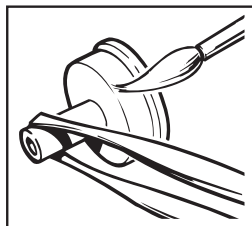
Use a sharp hobby knife to remove parts from the trees. Some parts may appear to have an extra "tab" on them, these should be removed.

HEAT SWAGE



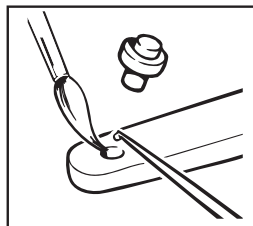
When heat swage is indicated, heat the tip of the knife in a candle or match flame. When touched to the plastic, the plastic will soften and form a "mushroom" head.

TWEEZERS



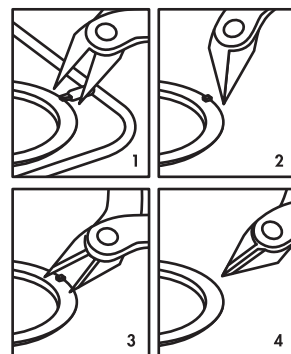
Tweezers are handy for holding very small parts during assembly or painting.

CEMENT



We recommend the use of liquid polystyrene cement. Apply with a fine brush or toothpick. Use cement sparingly or a sloppy job will result.

REMOVING PARTS FROM SPRUES

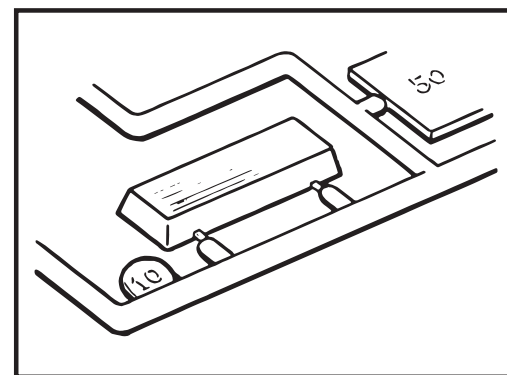


Many parts in this kit employ a modern sprue connection design. For the cleanest results, use a sharp pair of modeling "nippers" (flush cutters). First, cut a larger piece of sprue off with the part as shown in steps 1 and 2. Then shear the remaining piece of sprue off, flush with the surface of the part as shown in diagram 3 and 4.

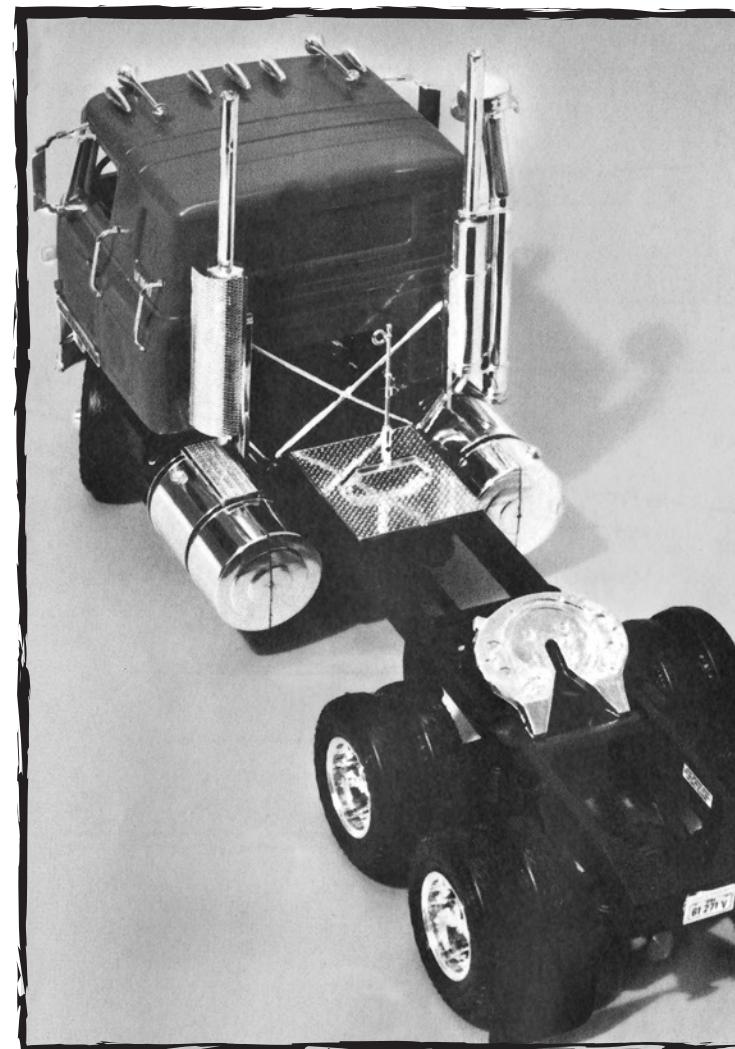
PAINT COLORS

A Black	I Steel	Q Yellow	SG Sierra Gold
B Flat Black	J Brass	R Beige	Z Gray
C Semi-Gloss Black	K Gold	S Brown	WB Wood Brown
D White	L Amber	T Lt. Blue	CC Chassis Color
E Flat White	M Transparent Amber	U Med. Blue	BC Body Color
F Silver	N Red	V Dark Blue	▲ Semi-Gloss
G Chrome (Bright Silver)	O Burgundy	W Transparent Blue	△ Gloss
H Aluminum	P Orange	X Lt. Green	▲ Metallic

A paint schematics sheet is included with your kit for reference. It is also recommended that you search the internet for additional color references and details.

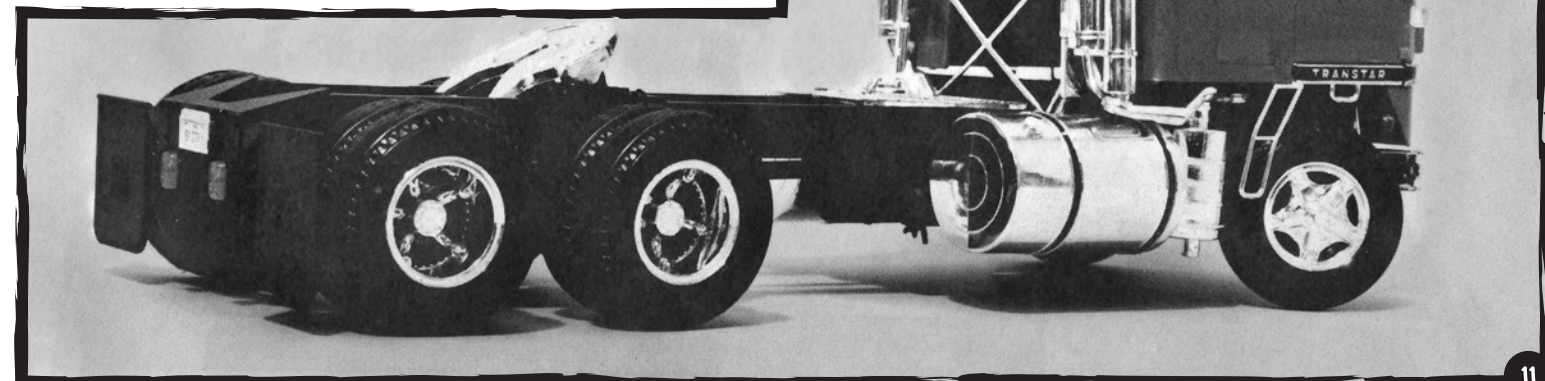
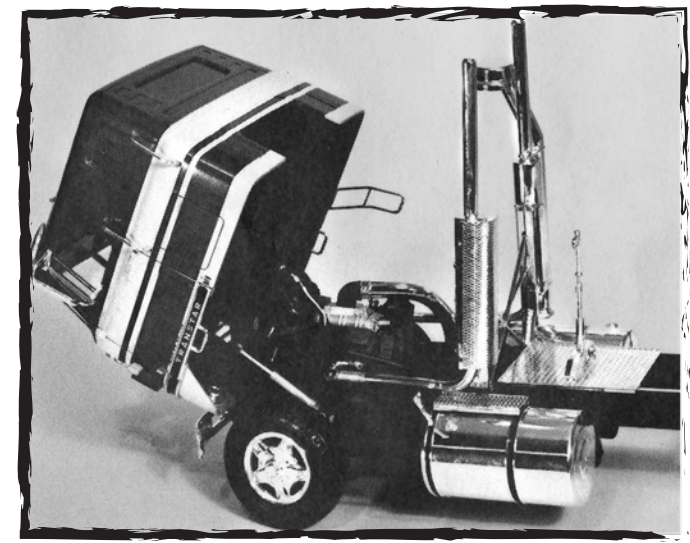


When you study your parts you will notice that each part is numbered. Remove parts from trees only as you use them — not before.



We hope you have enjoyed your AMT International Transtar CO-4070A build. Look for other AMT big rig kits online or at your local hobby dealer.

Look at actual trucks for special painting ideas. Dirt, oil and grease, gasoline or diesel fuel overflow and exhaust wear all make interesting touches of realism. Trucks have lots of hoses and wiring—too fine to be molded in plastic—that you can add as custom detailing.

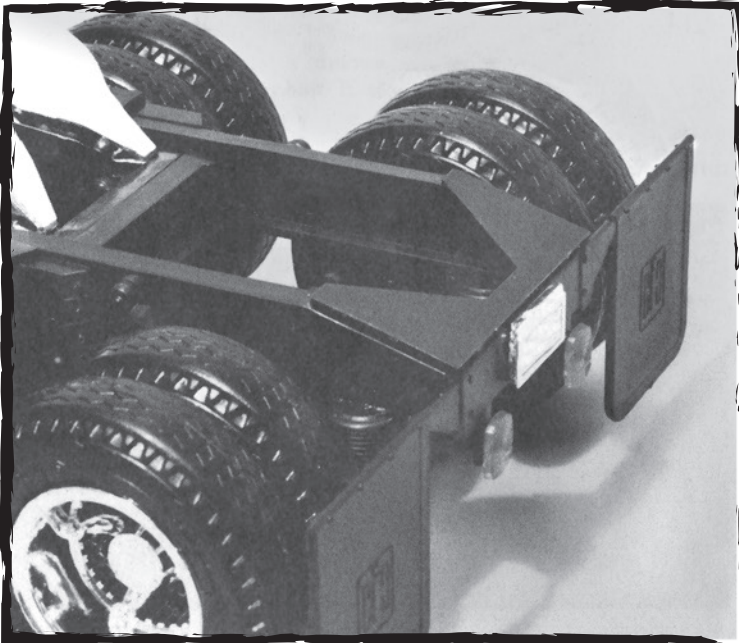


DECAL INSTRUCTIONS



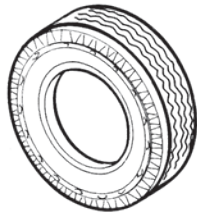
Read the instructions on the back of the decal sheet before applying decals. Cut each decal out close to its edge. Apply using tweezers to hold the small pieces. After sliding the decal off the backing paper onto the model, gently move into correct position before pressing down.

A few pointers: license plates are often found attached to the front bumper. The small state revenue tags can be seen in many positions on trucks—vary your pattern to suit your own desire. Study actual trucks for other ideas.



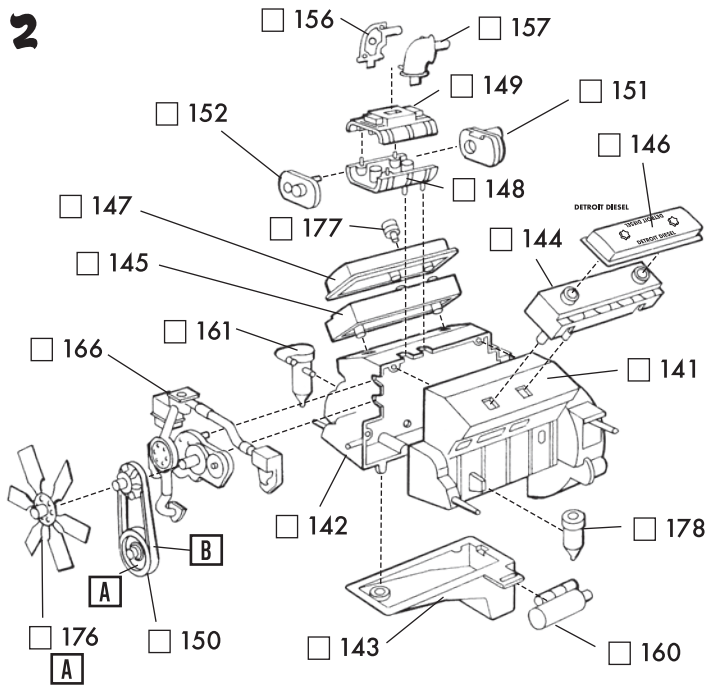
1

Check your tire count.



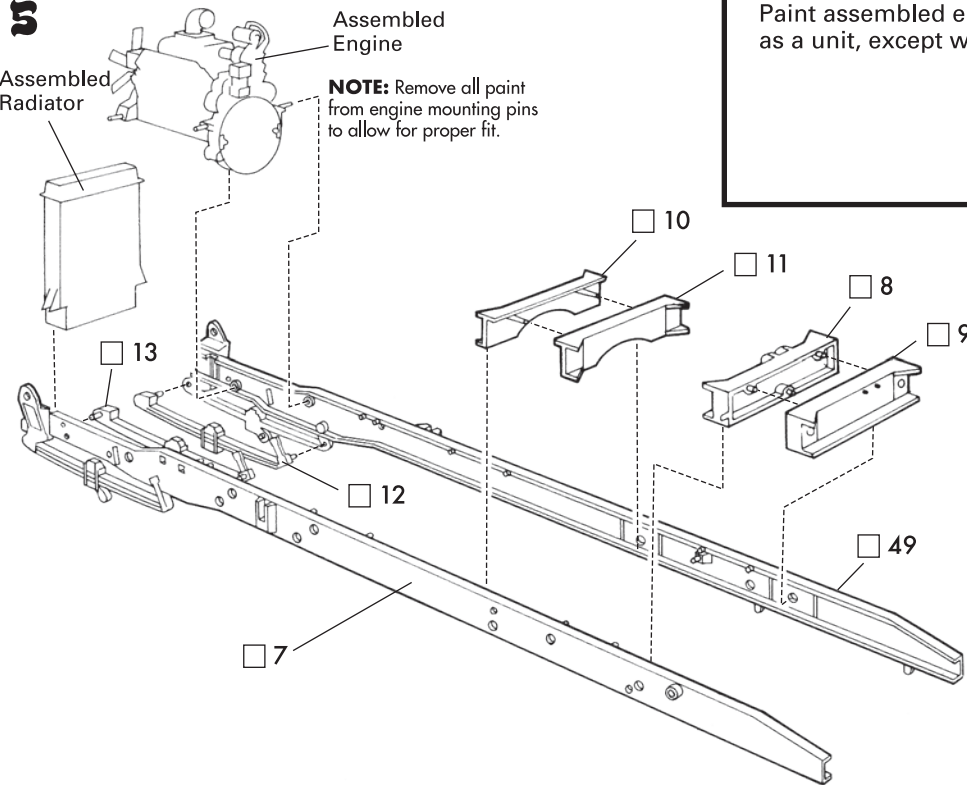
10x

2



Paint assembled engine **N** as a unit, except where noted.

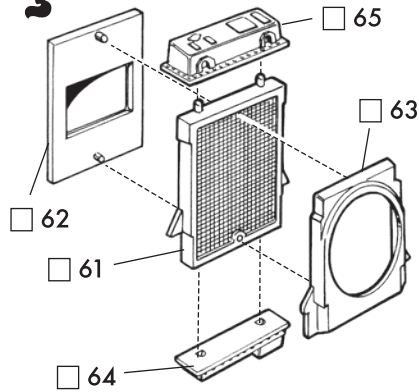
3



Paint all frame parts **CC**.

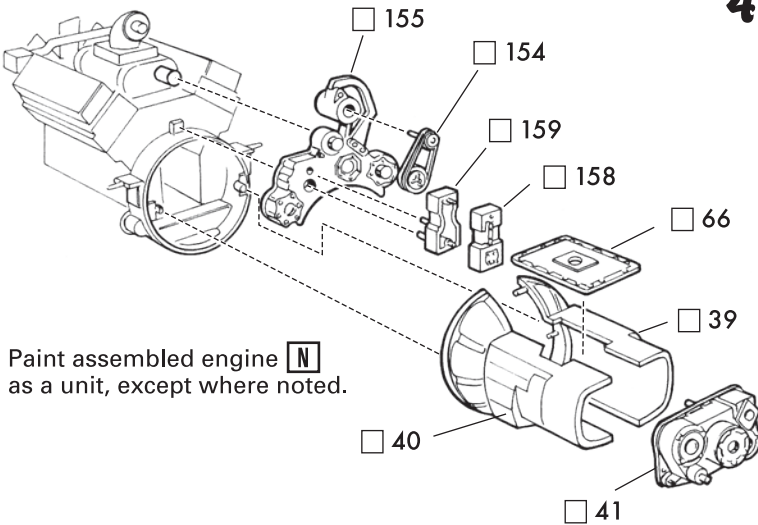
Glue basic frame components together, putting 12 and 13 in place first. Then add engine, rear frame cross members, and radiator last.

4

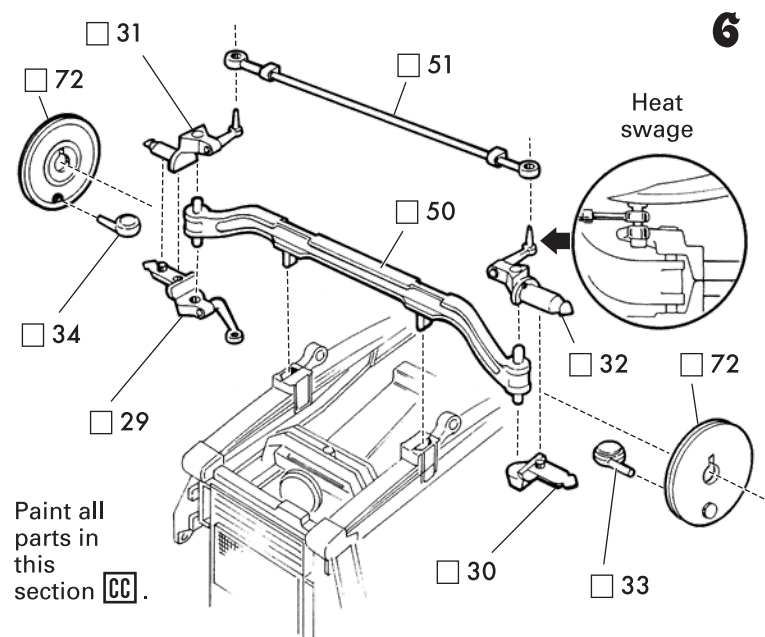


Glue radiator parts together.

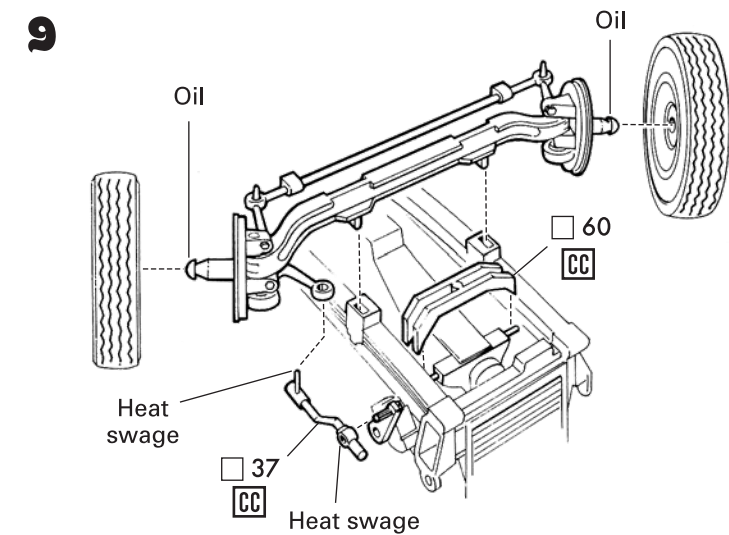
Glue these parts together to complete basic engine.



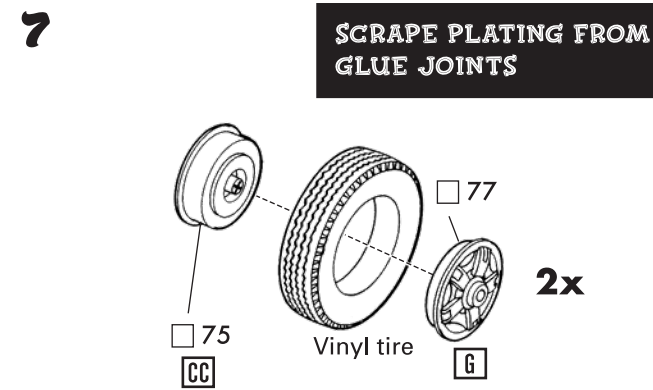
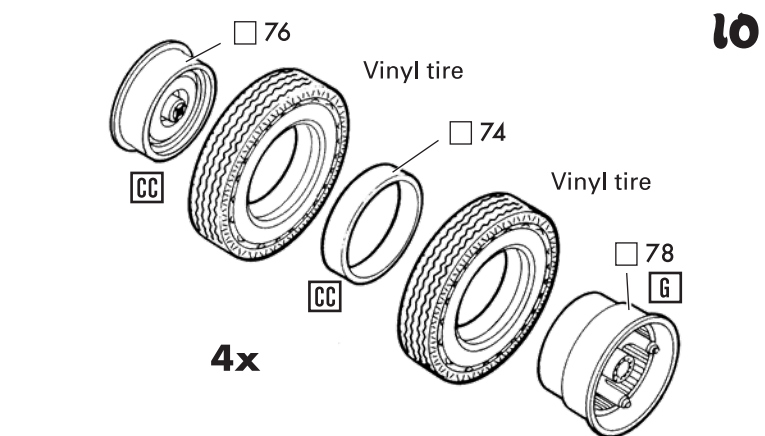
Paint assembled engine **N** as a unit, except where noted.



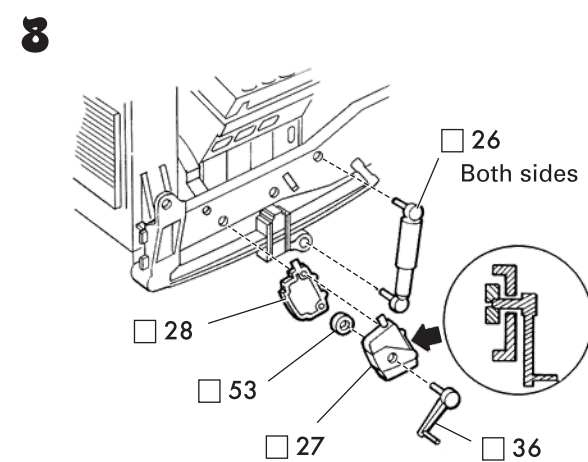
Assemble carefully. Avoid getting glue on the pins at end of axle - 50 - if you want steerable wheels. see heat swage instructions on page 2 for attachment of tie rod - 51.



Snap front tires and hubs to axle—oil first. Glue axle to frame. Attach idler arm - 37 - next. Finish with 60.

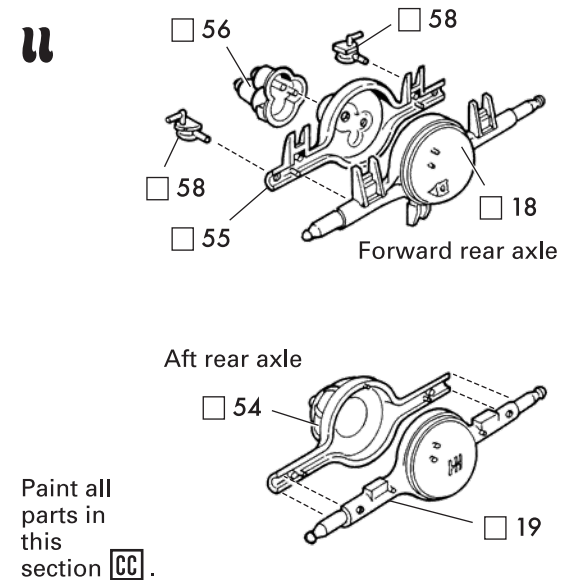


Optional 10-hole chrome wheels - 200 - may be used.

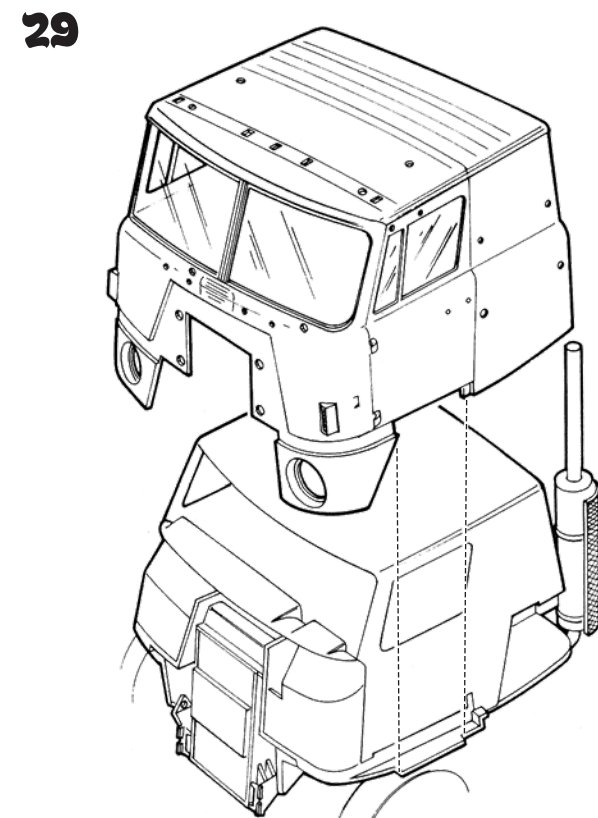


Carefully glue 53 to shaft end of steering arm - 36 - after steering arm is slipped through 28.

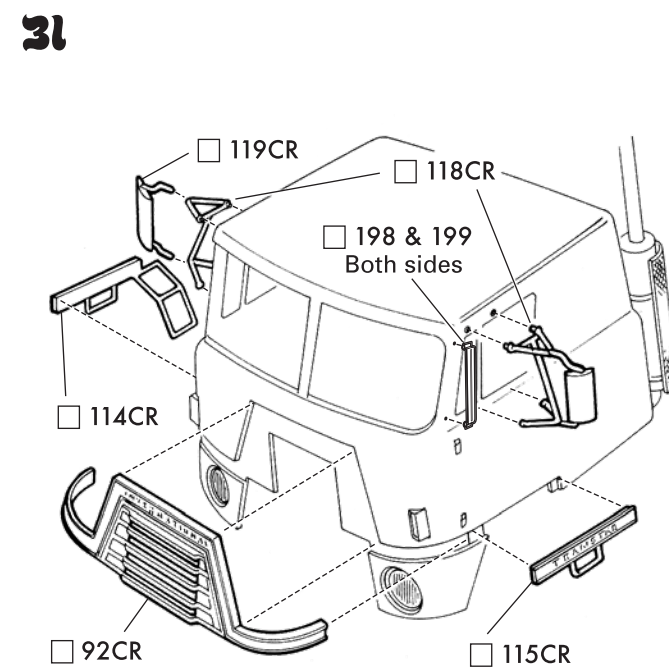
Paint all parts in this section (CC).



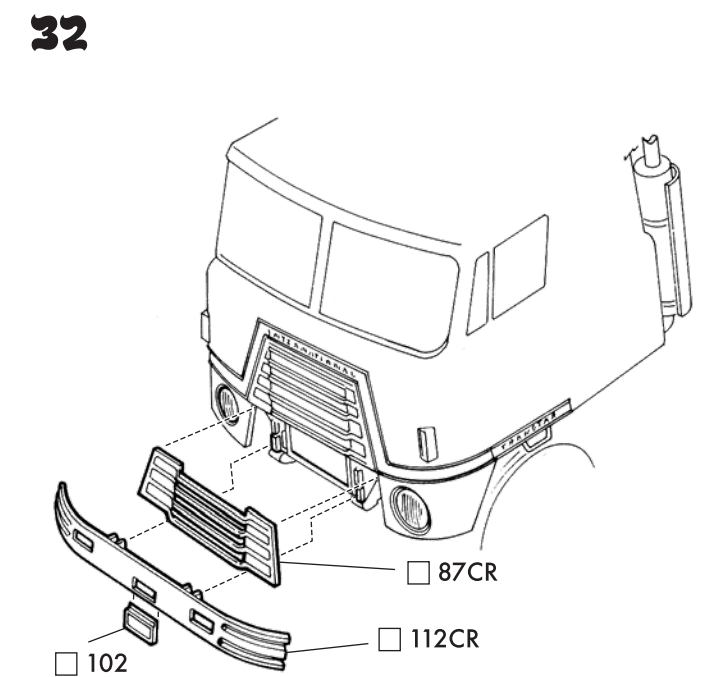
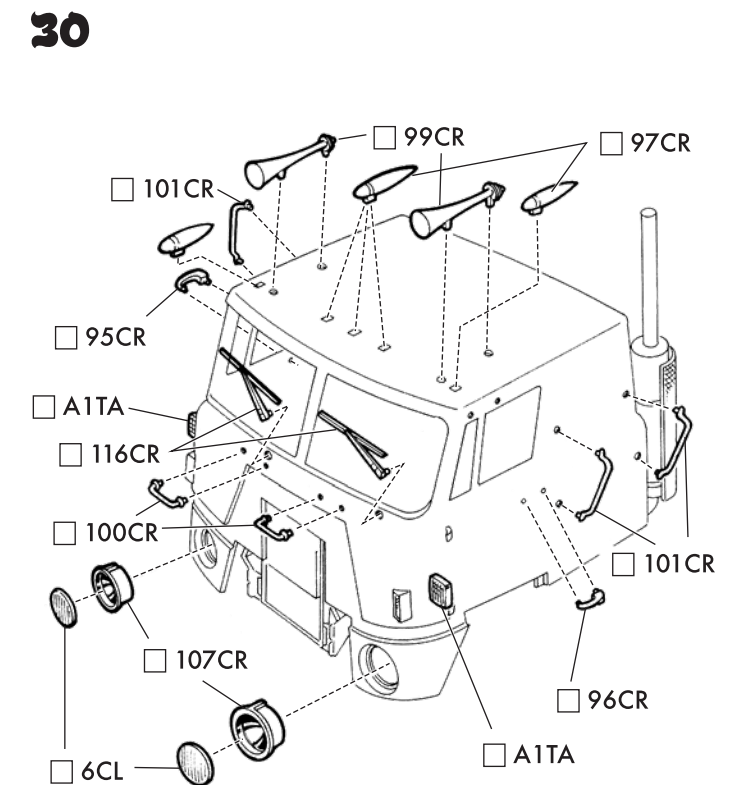
Paint all parts in this section (CC).



Glue outer cab to cab floor—be careful not to break exhaust stacks when placing outer cab over inner cab.

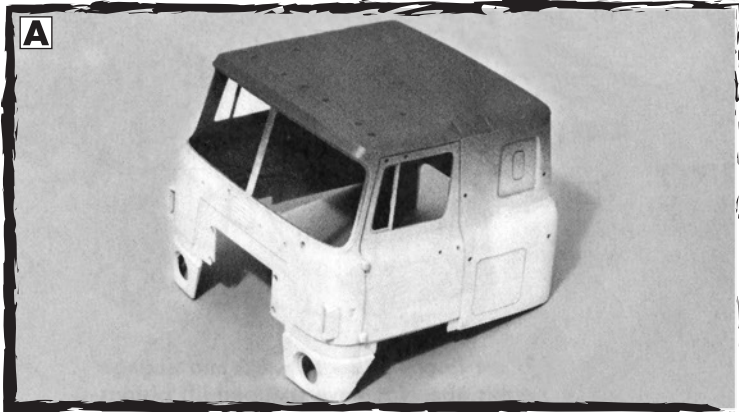


SCRAPE PLATING FROM GLUE JOINTS



OPTIONAL PAINTING INSTRUCTIONS

You may paint your truck in any way you wish. The paint masks supplied are for one authentic paint scheme. Optional Rat Fink decals are included with your kit. Images shown below are for nostalgia purposes. Actual part colors may vary.



A: Paint lower portion of cab desired stripe color.

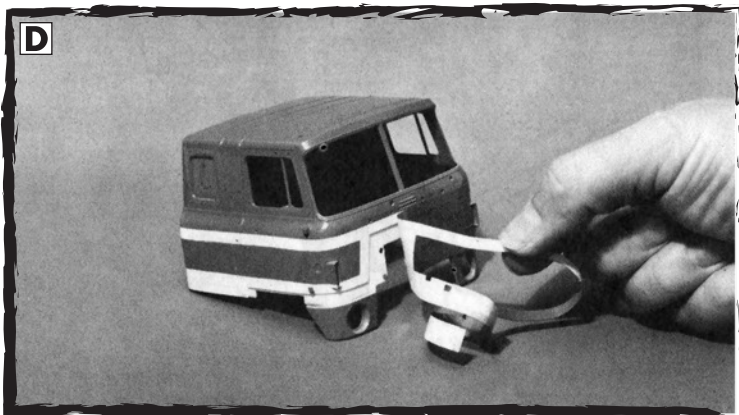
CAUTION: Allow stripe coat to dry for at least 48 hours before next step



B: Apply masks from page 12 with rubber cement. Remove excess rubber cement with ball of dry rubber cement.



C: Spray masked cab with your selected second color. Let dry for 48 hours, or as long as directed by the paint manufacturer.

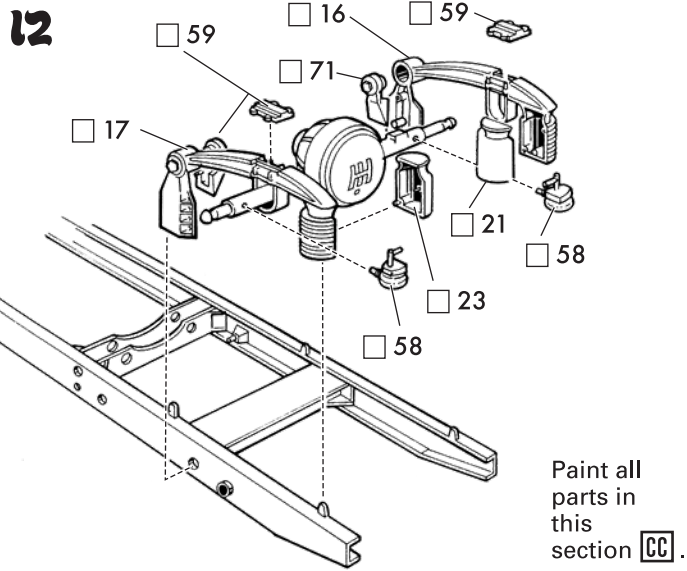


D: Once paint is set, carefully remove spray masks and excess rubber cement.

E: Touch up colors as needed with a fine brush.

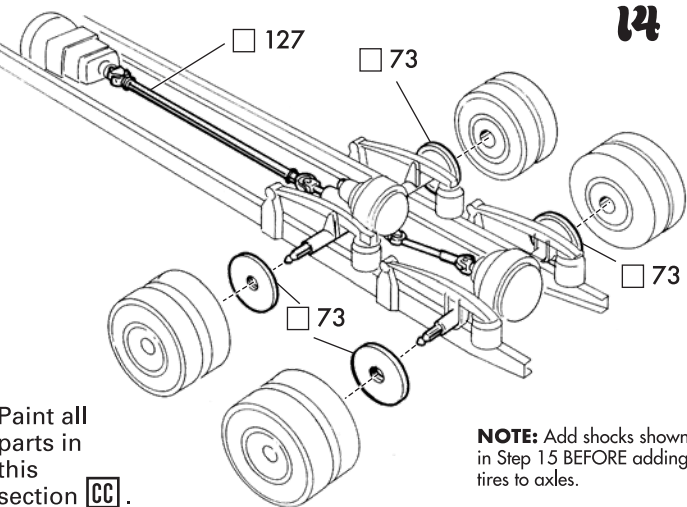


12



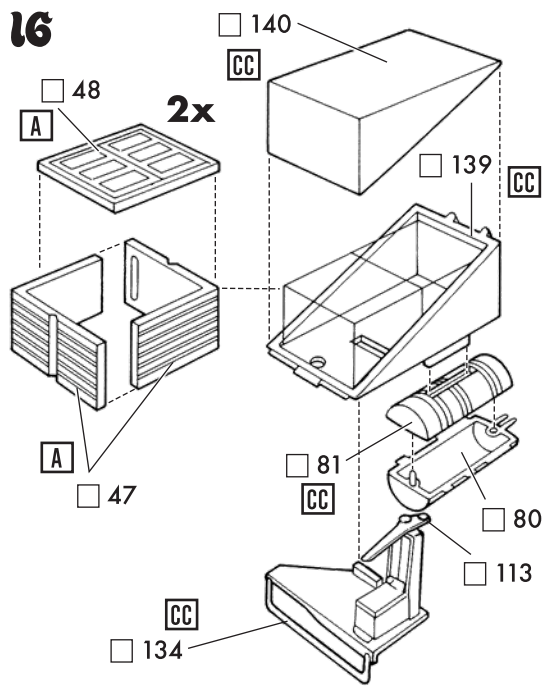
Glue backing plates - 73 - to axles. Glue shocks - 24 & 25 - shown in Step 15 to frame. Then place oil on axle tips and push assembled tires into place.

14

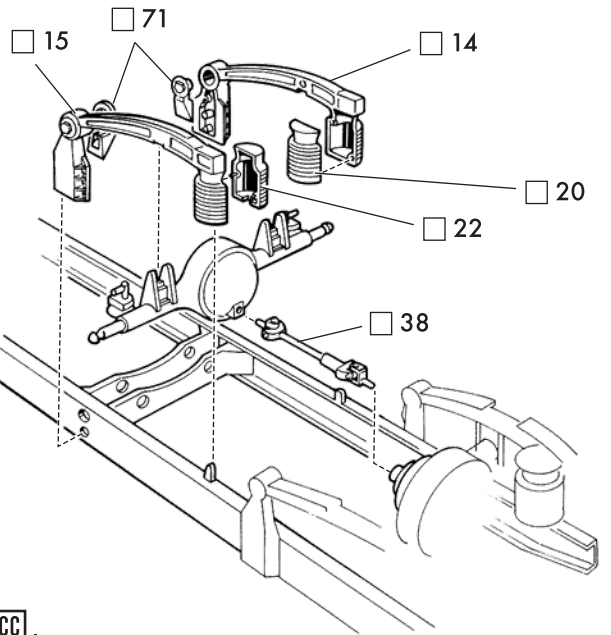


NOTE: Add shocks shown in Step 15 BEFORE adding tires to axles.

16



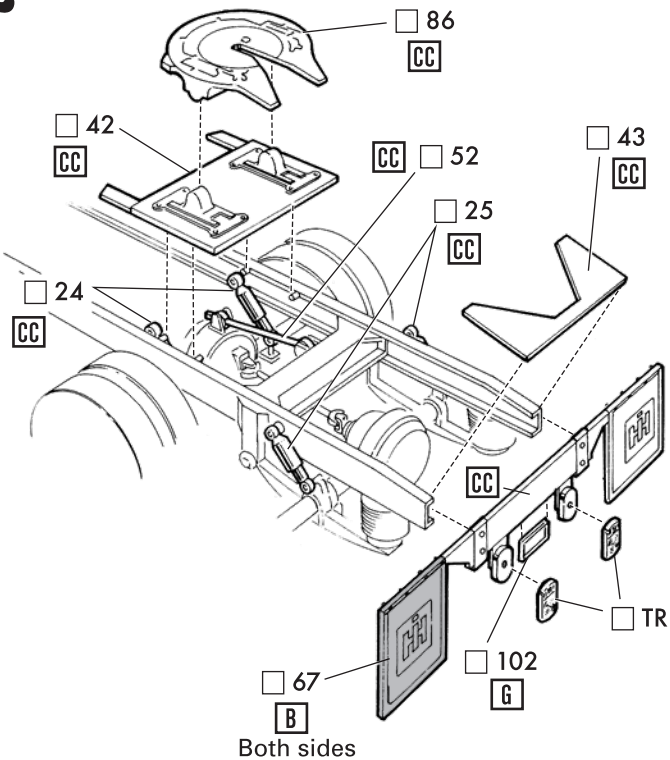
13



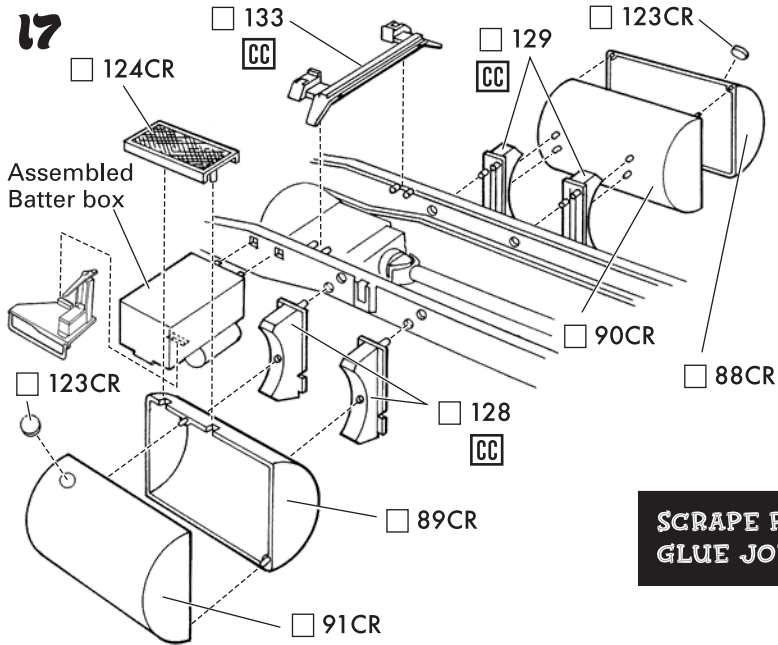
Paint all parts in this section CC.

Glue assembled springs - 14 & 15 - to axle first, then add other parts.

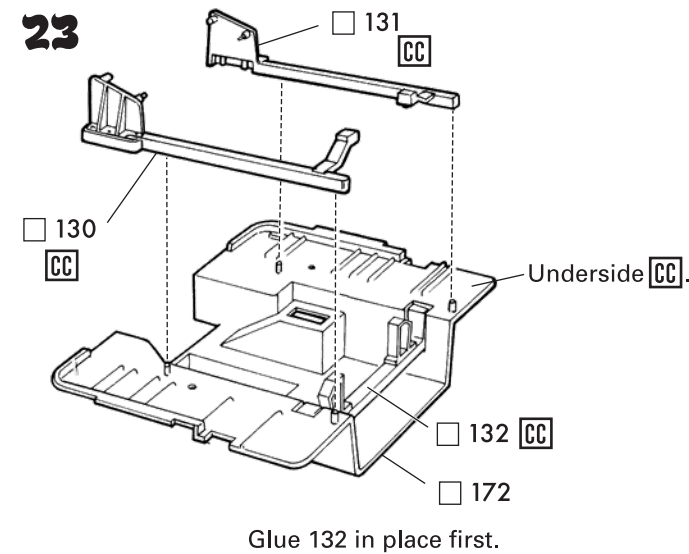
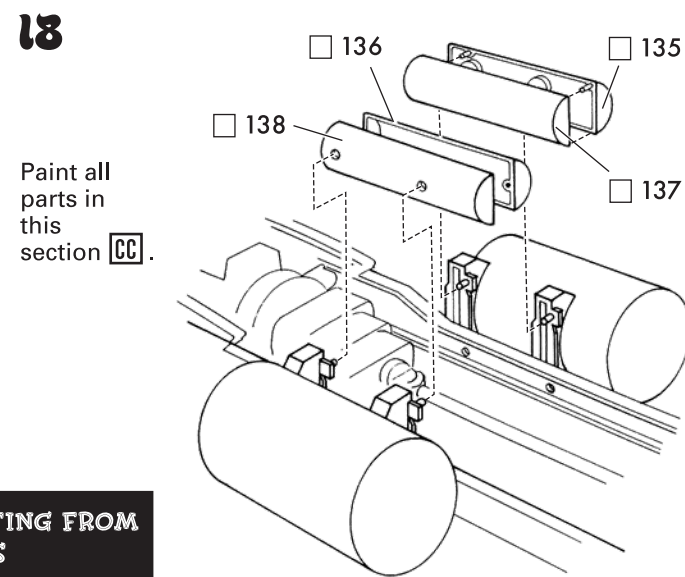
15



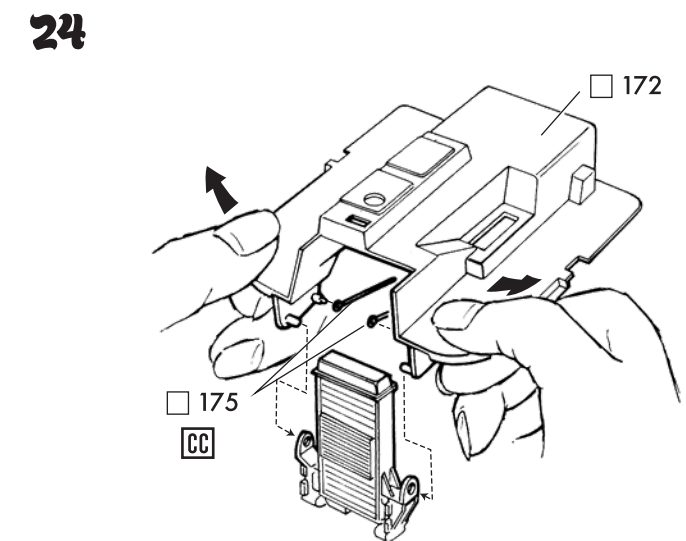
SCRAPE PLATING FROM GLUE JOINTS



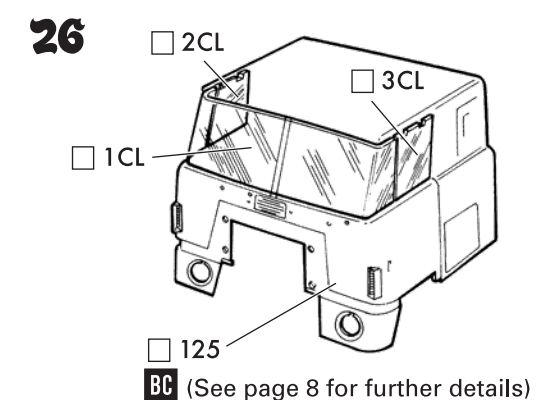
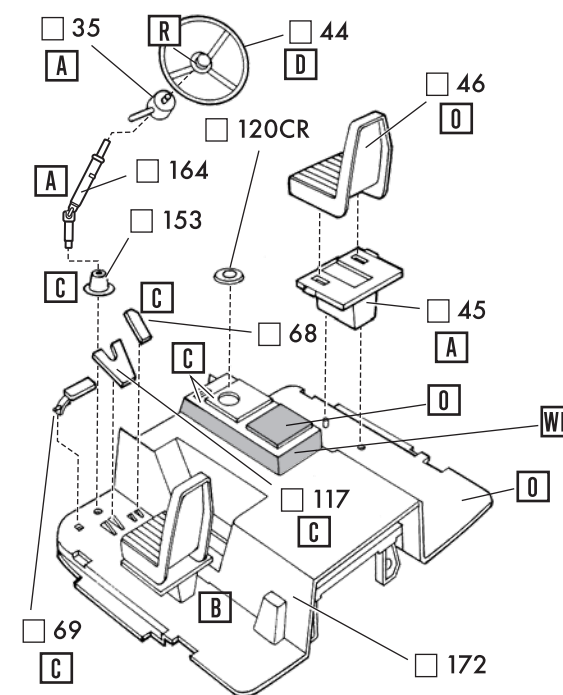
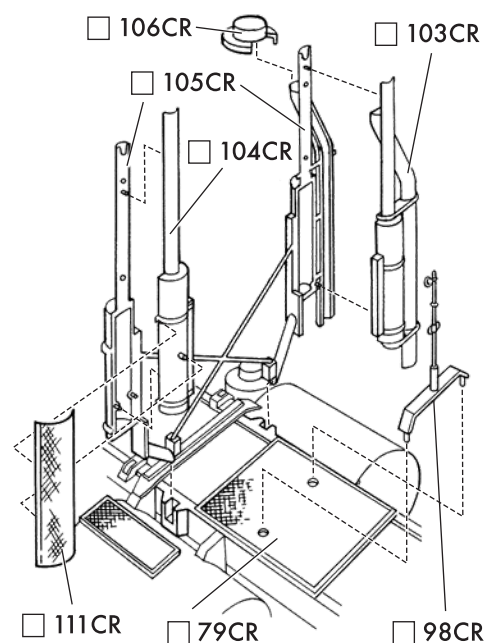
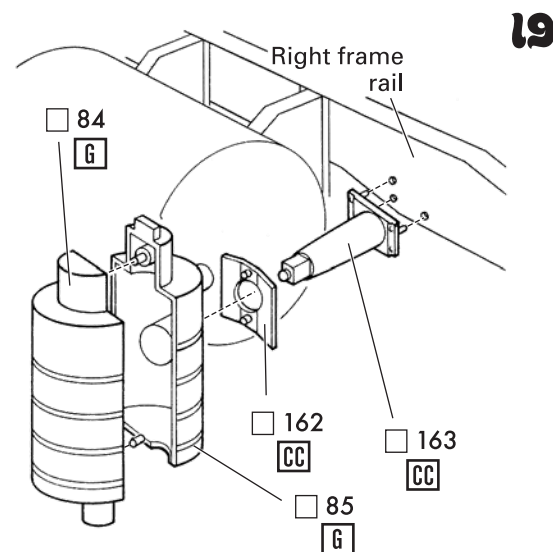
SCRAPE PLATING FROM GLUE JOINTS



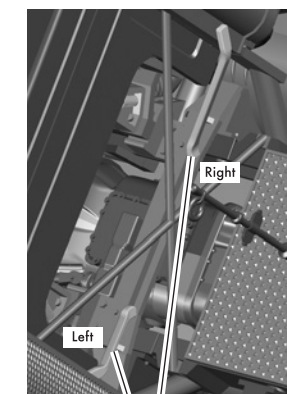
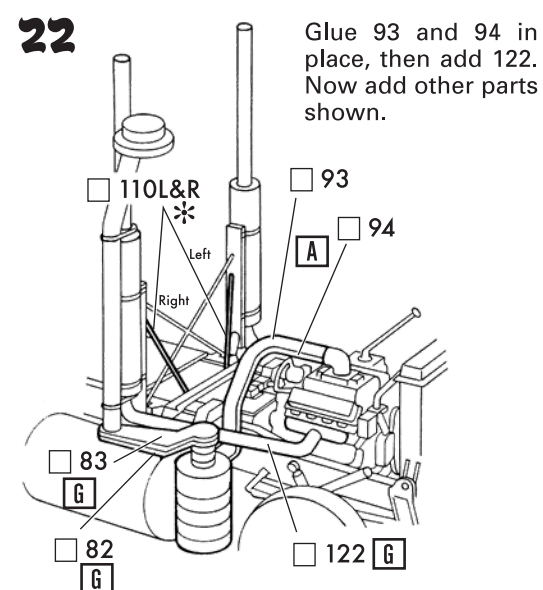
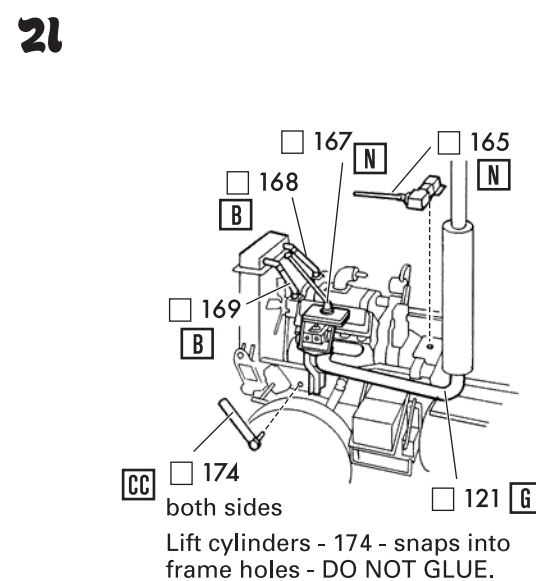
SCRAPE PLATING FROM GLUE JOINTS



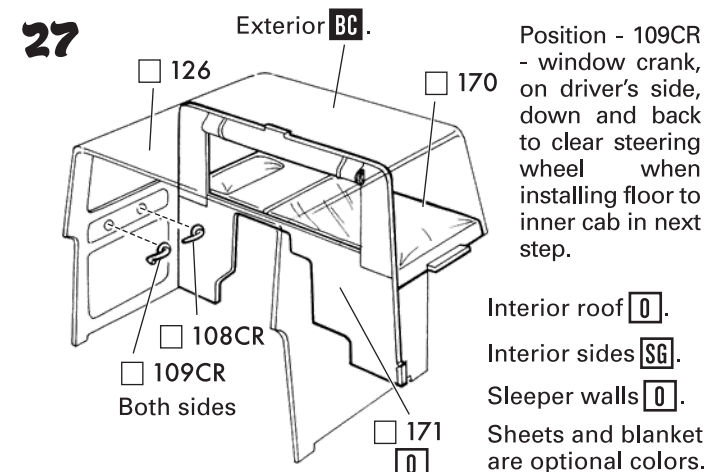
Snap lift pistons - 175 - to pins on both sides, then flex floor - 172 - outward and attach other pins to chassis. Guide pistons into lift cylinders and lower floor down.



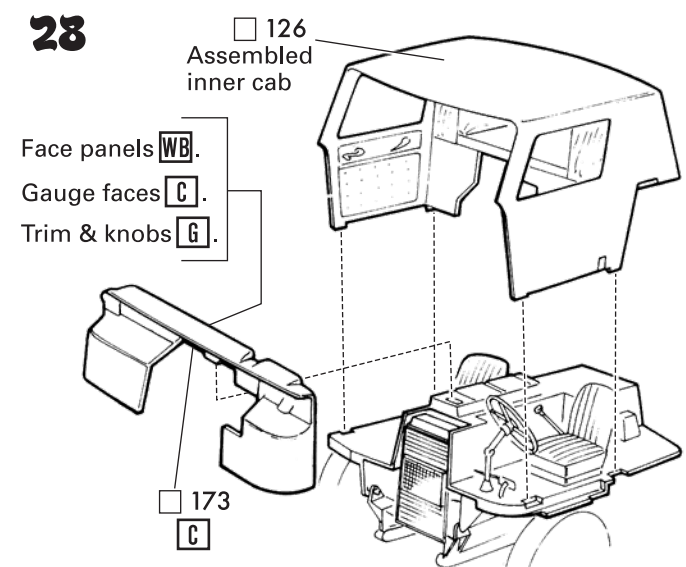
Glue clear parts to inside of cab. Work neatly to avoid getting glue on centers of glass panels.



* Use 3D rendering for correct placement of - 110L&R - exhaust braces.



Interior roof [O].
Interior sides [SG].
Sleeper walls [O].
Sheets and blanket are optional colors.



Face panels [WB].
Gauge faces [C].
Trim & knobs [G].