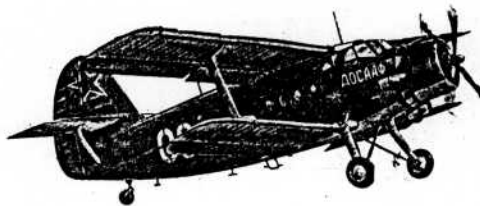


BÍLEK

1/72 SCALE MODEL KIT No. 952

ANTONOV AN-2 "COLT"



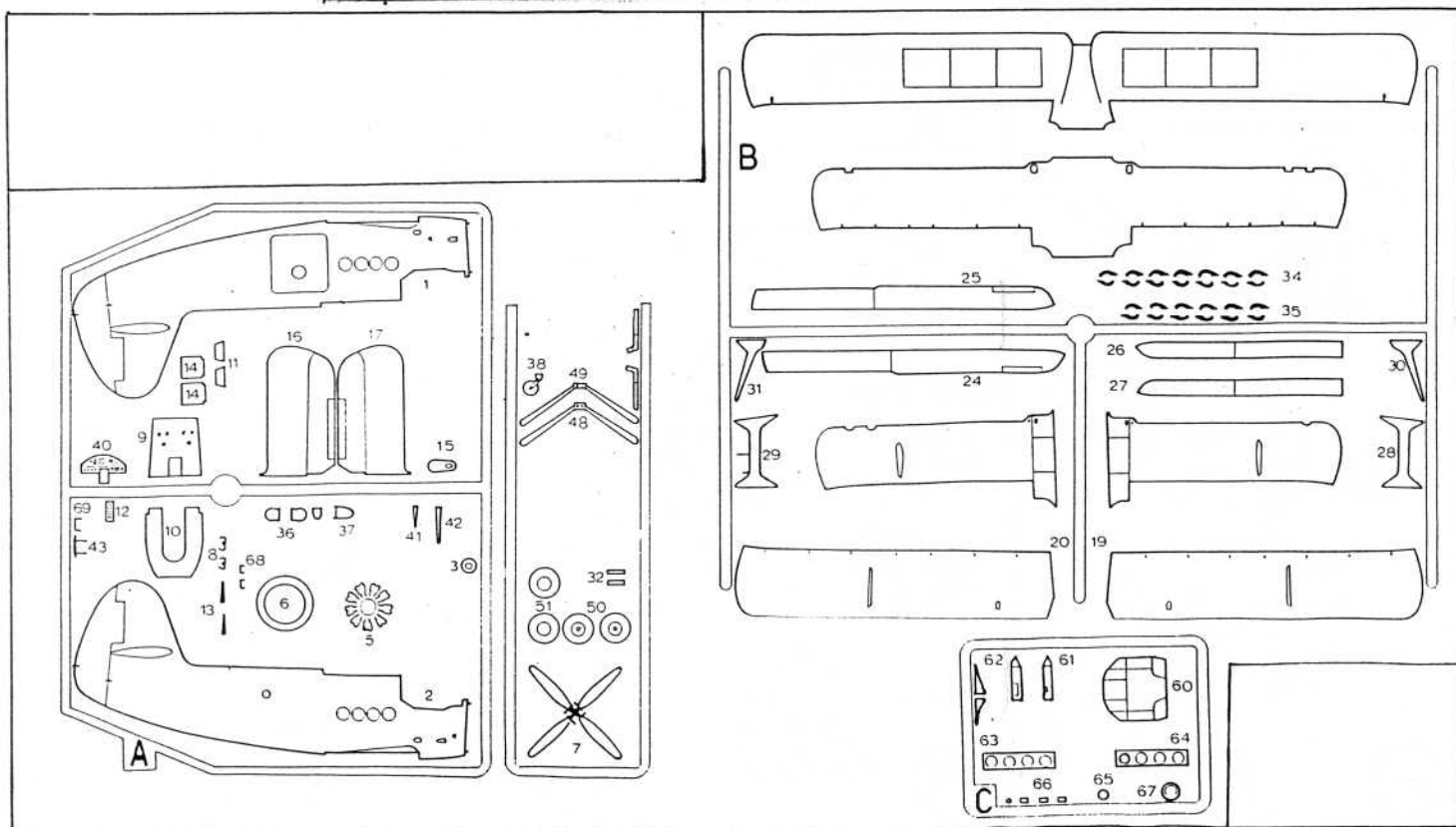
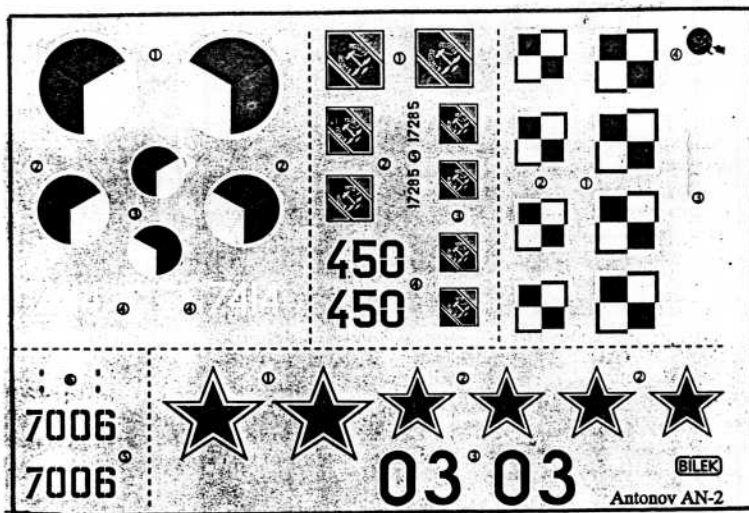
Antonov AN-2, lidově v Čechách a na Slovensku pojmenovaná "Andula" je jedním z nejrozšířenějších letadel světa. Plní a plnila úkoly jak v oblasti vojenské, tak i civilní. Jednomotorový vzpěrový dvouplášník pro dvoučlennou posádku a až čtrnáct přepravovaných osob. Kovová kostra křídel a pevných i pohyblivých ocasních ploch je potažena durallem a plátnem. Tato kombinovaná konstrukce umožňovala snadnou údržbu i opravy, často přímo u provozovatele letounu. Hvězdicový motor Švecov, o výkonu 746 kW je devítiválcový, radiální. Podvozek je pevný, zadní ostruhové kolo říditelné. Maximální dosahovaná rychlost je relativně nízká, 260 km/hod, cestovní je pak ještě nižší a činí 170-190 km/hod. Dostup letounu je až 4350m, dolet pak je až 900-950 km dle povětrnostních podmínek a zatížení stroje. Je zajímavé, že první prototyp vzlétl v září 1947, seriová výroba započala pak na konci roku 1948. Licenčně byl stroj produkován v Polsku a Číně.

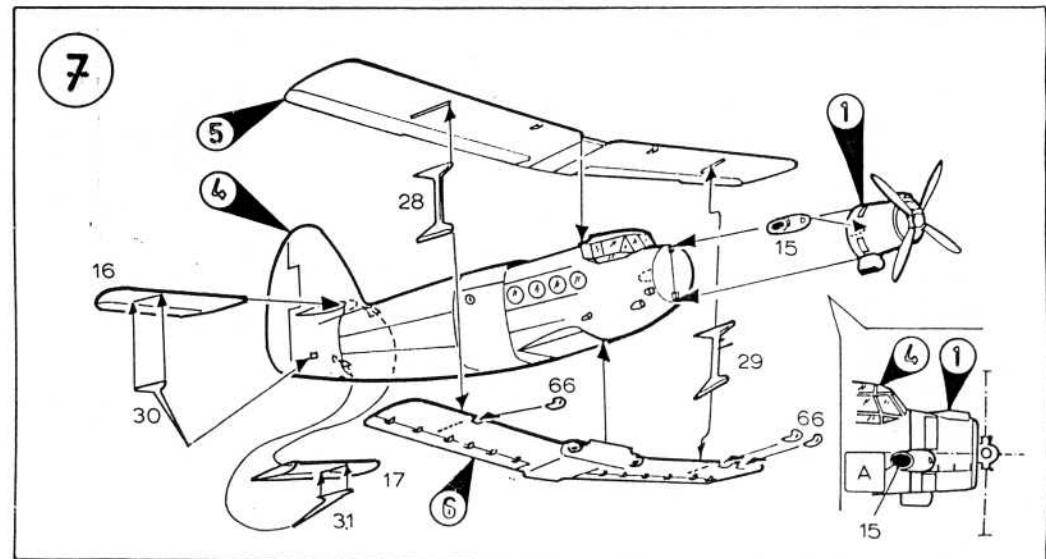
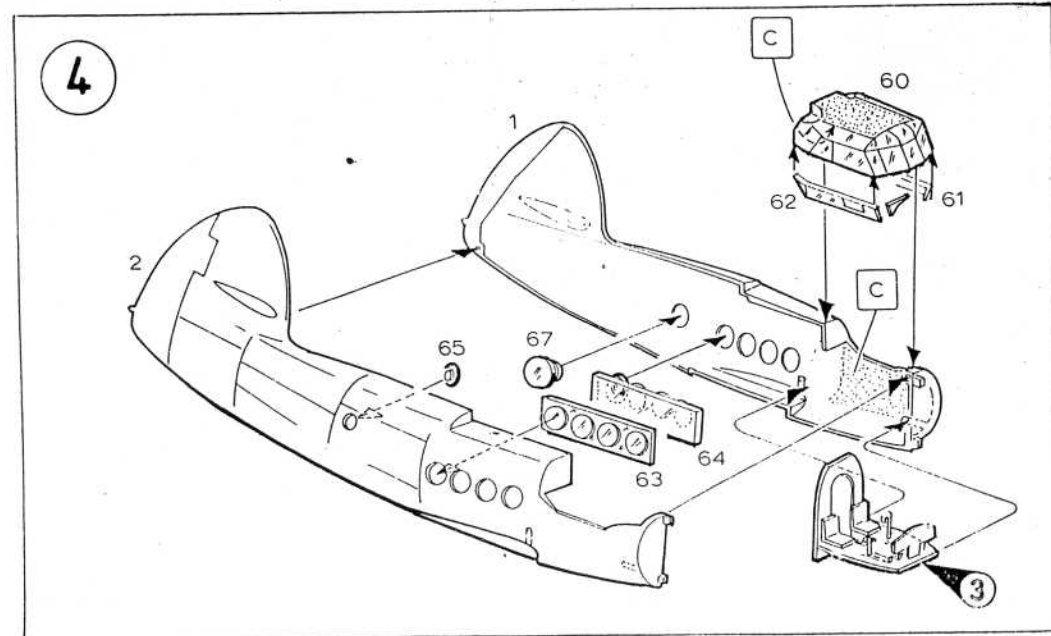
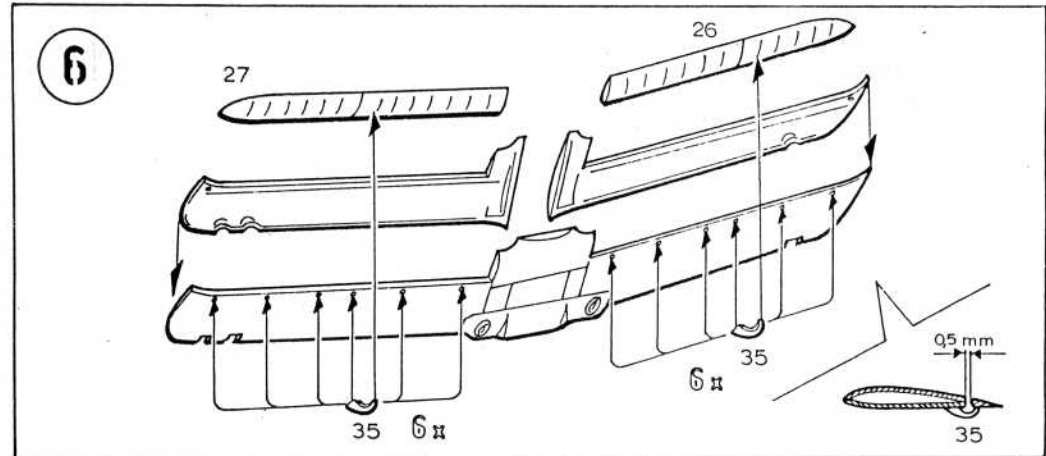
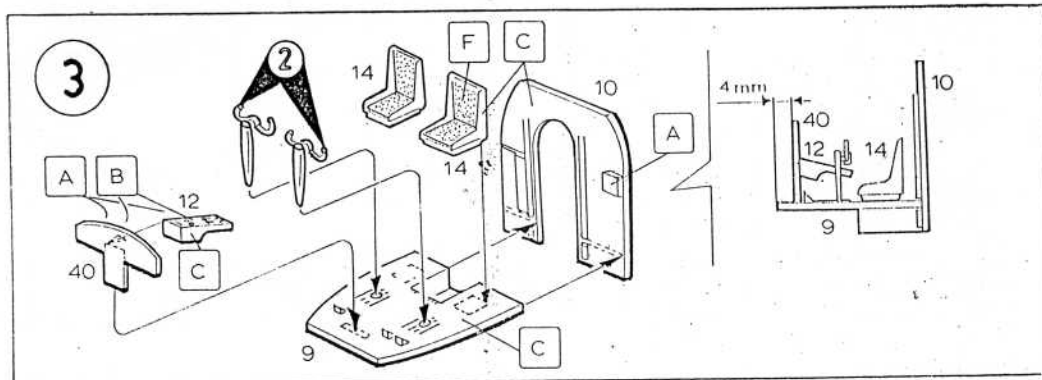
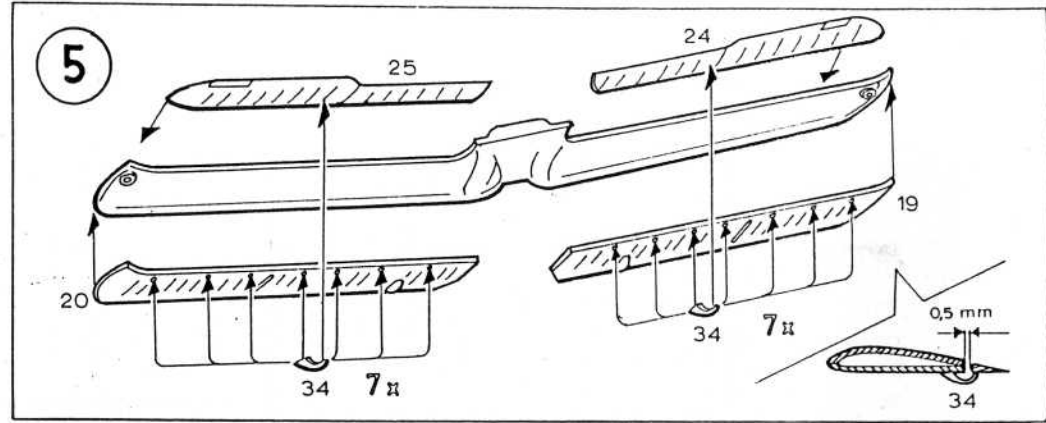
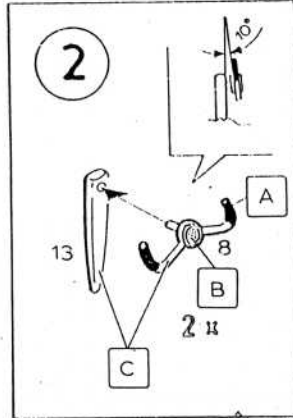
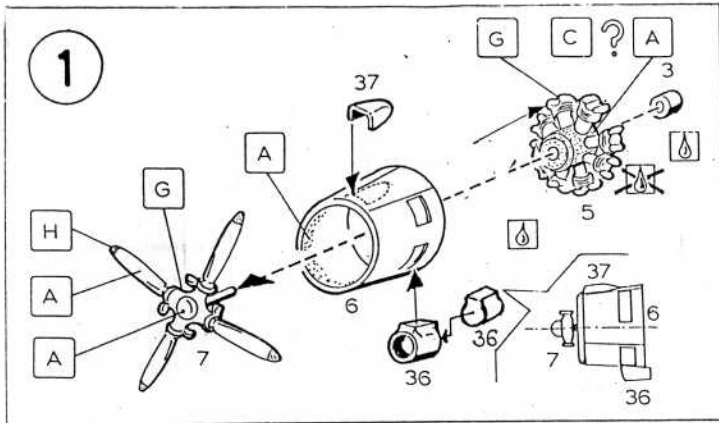
The Antonov design bureau was formed in May 1946 with the specific task of production a utility aircraft for the Soviet Unions Ministry of Agriculture and Forestry. The first aircraft of the type flew in August 1947, and after flight -testing and some modification the aircraft went into production in late 1948.

Type : 14 seat transport and general-purpose aircraft

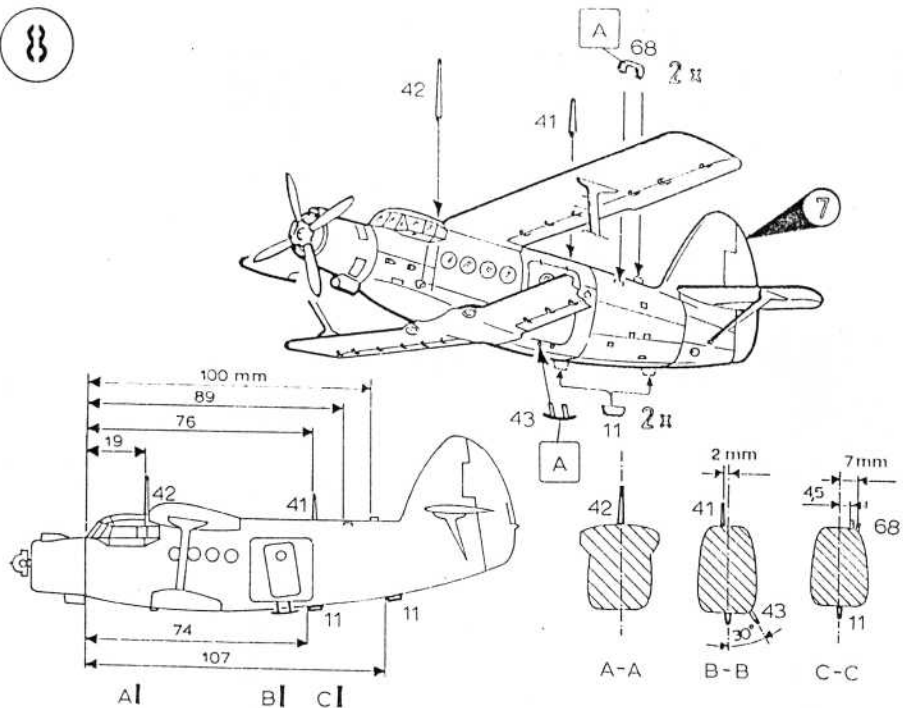
Powerplant: one 746kW Shvetsov Ash-62 nine-cylinder radial engine

Performance: maximum speed at 1750m ,260km/hod, cruising speed 170-190km/h.

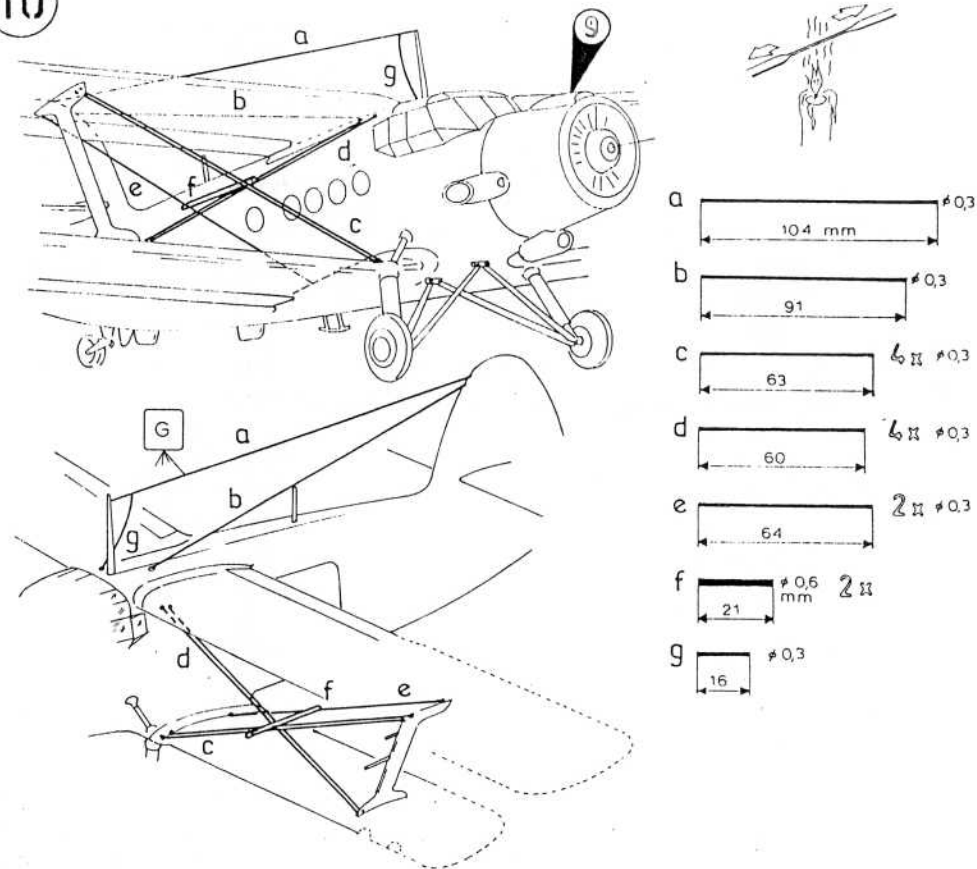




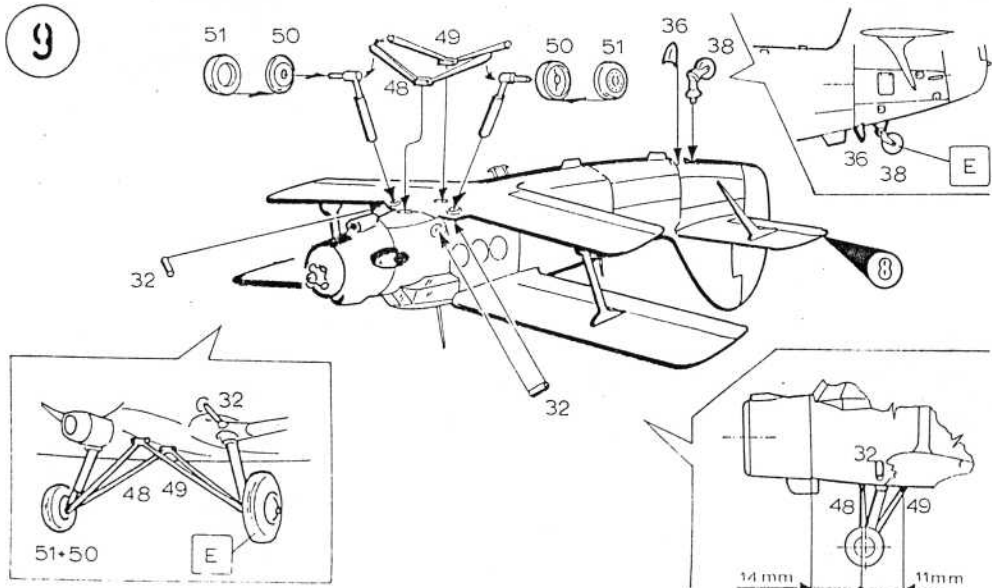
8



10



9



Interior paints :
Barvy v interieru :

Code	Model Master	Humbrol
A/Fl.Black	1749	33
B/Fl.White	1768	34
C/Int.Bleu	1720	144
D/Aluminium	1781	56
E/Rubber	1583	33
F/Red	1501	20
G/Steel	1780	-
H/Yellow	1708	154

MODEL ROKU
MODEL OF THE YEAR



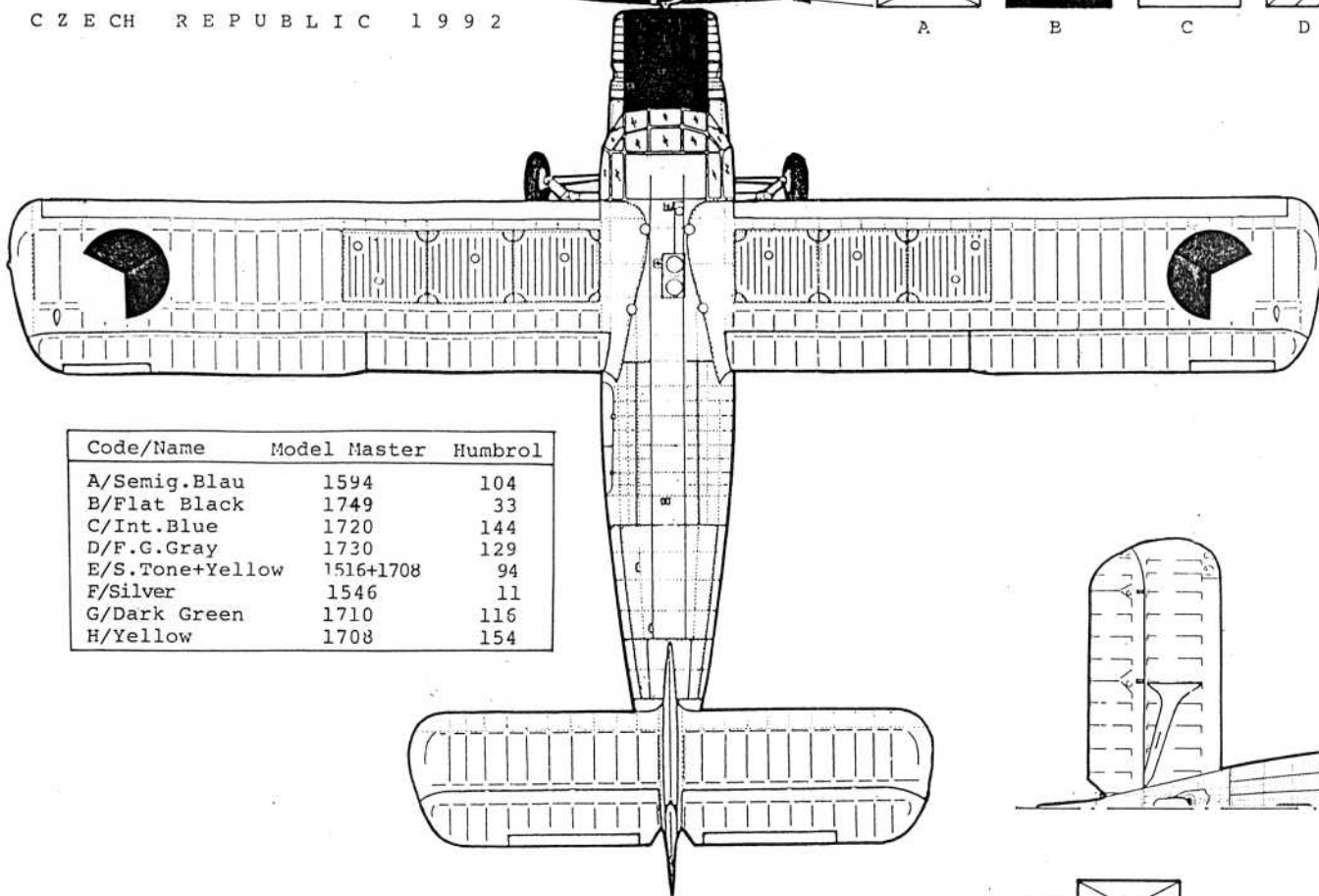
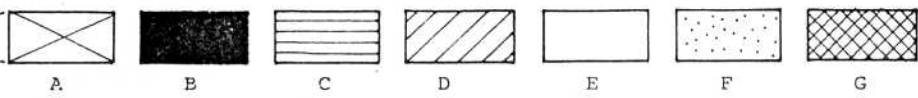
Antonov An-2, 1:72

produced
Bilek Hobby Kits

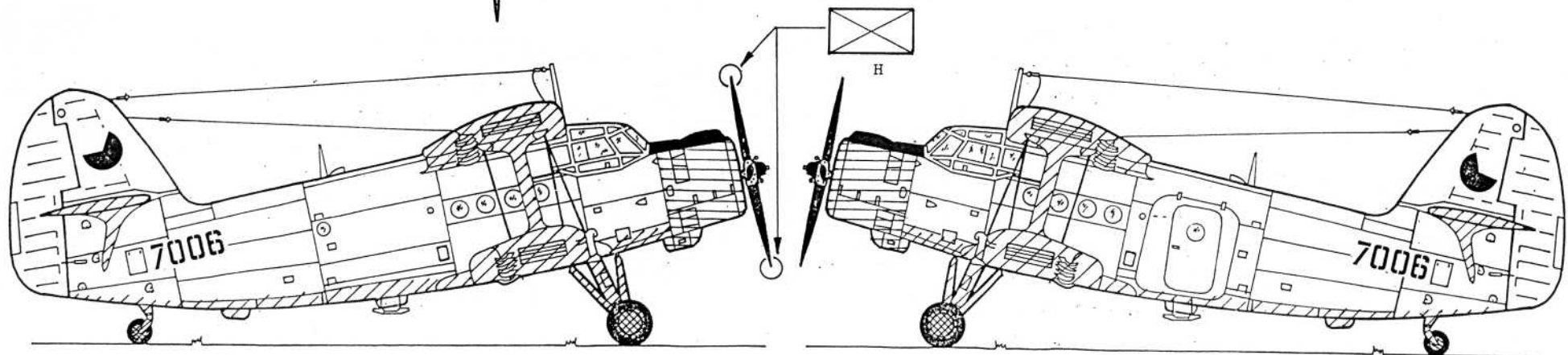
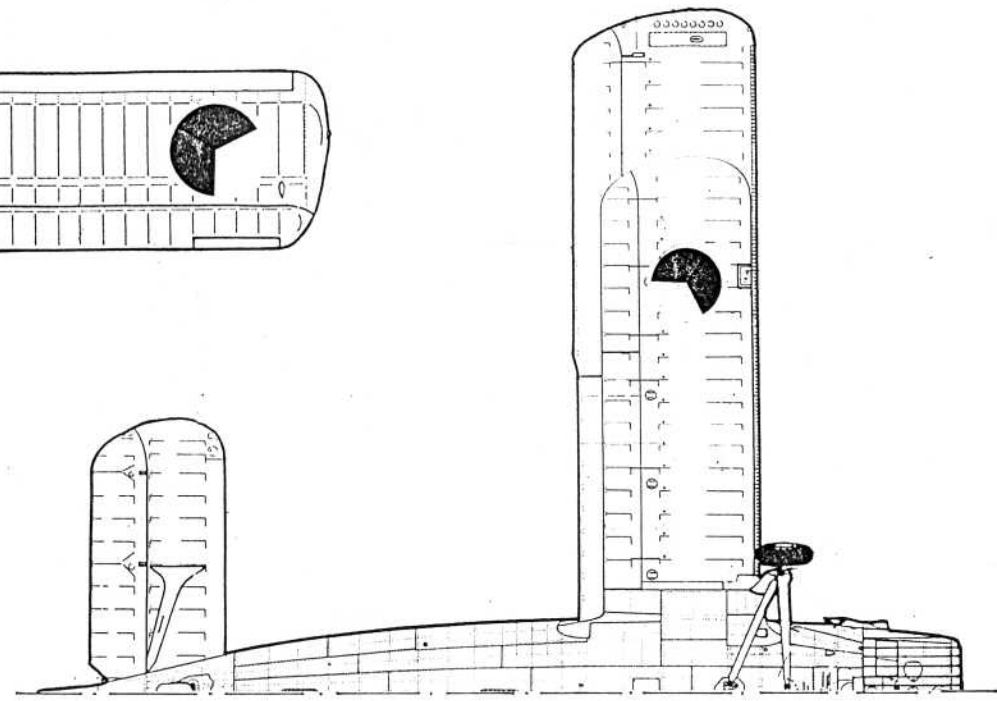
Prague 16 1997

Prague 16 1997

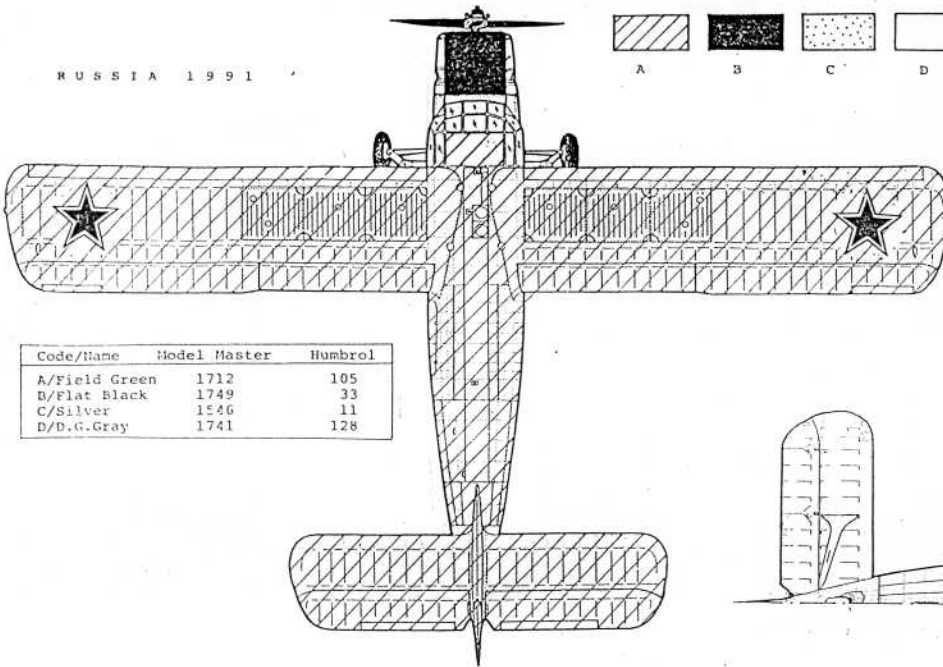
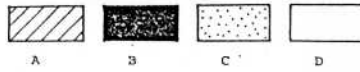
CZECH REPUBLIC 1992



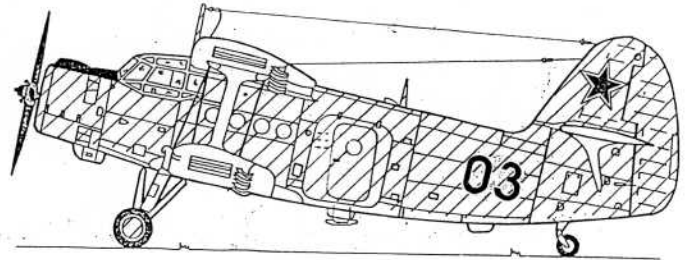
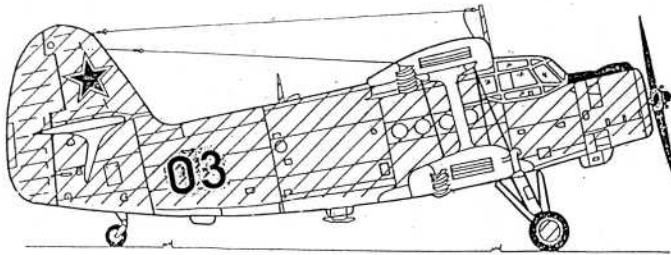
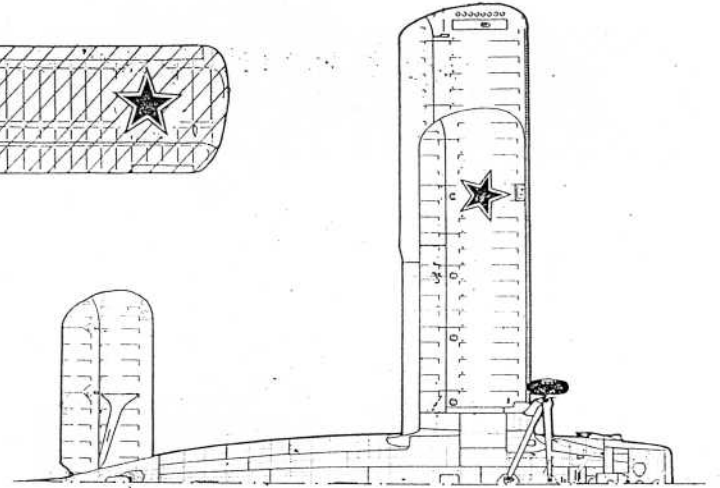
Code/Name	Model Master	Humbrol
A/Semig.Blau	1594	104
B/Flat Black	1749	33
C/Int. Blue	1720	144
D/F.G.Gray	1730	129
E/S. Tone+Yellow	1516+1708	94
F/Silver	1546	11
G/Dark Green	1710	116
H/Yellow	1708	154



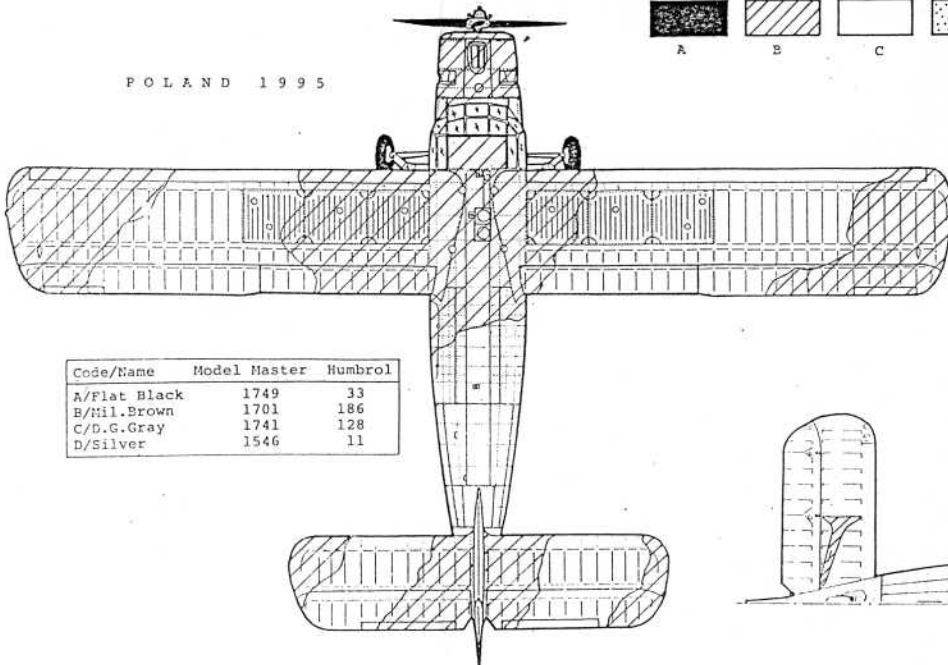
RUSSIA 1991



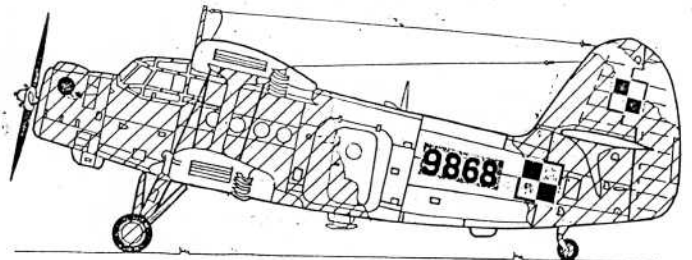
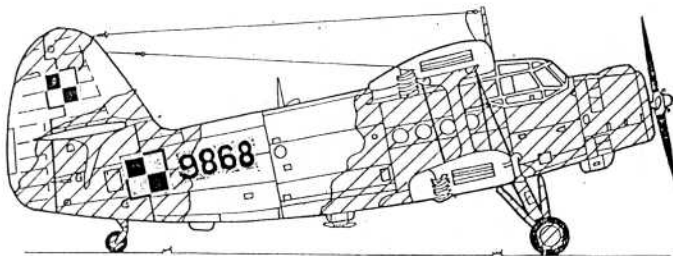
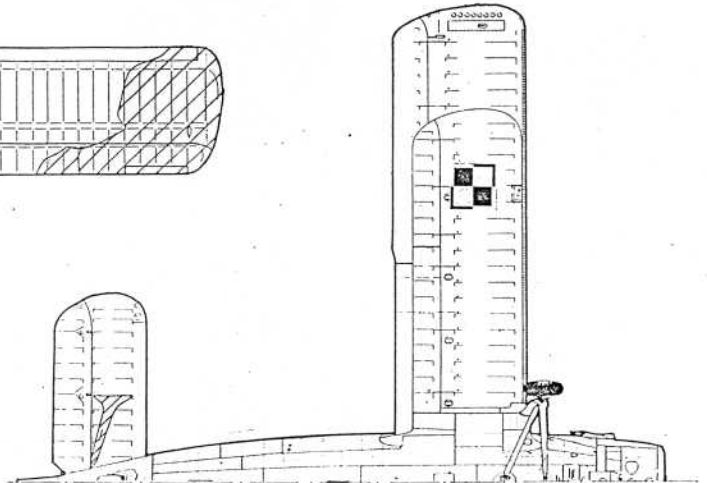
Code/Name	Model Master	Humbrol
A/Field Green	1712	105
D/Flat Black	1749	33
C/Silver	1546	11
D/D.G.Gray	1741	128

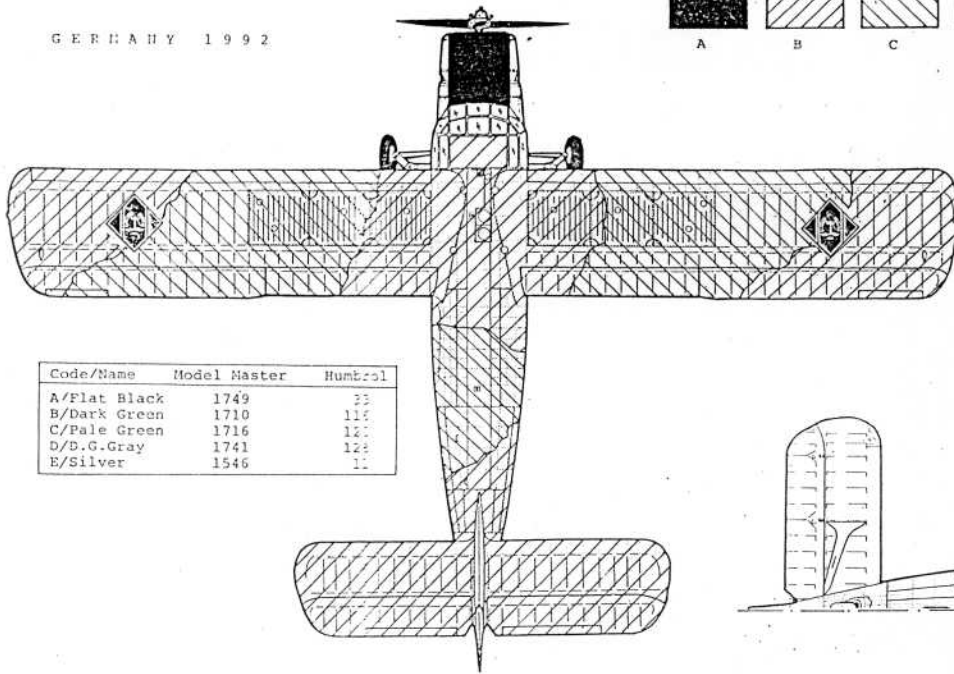
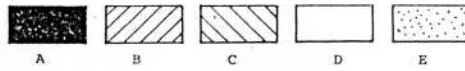


POLAND 1995

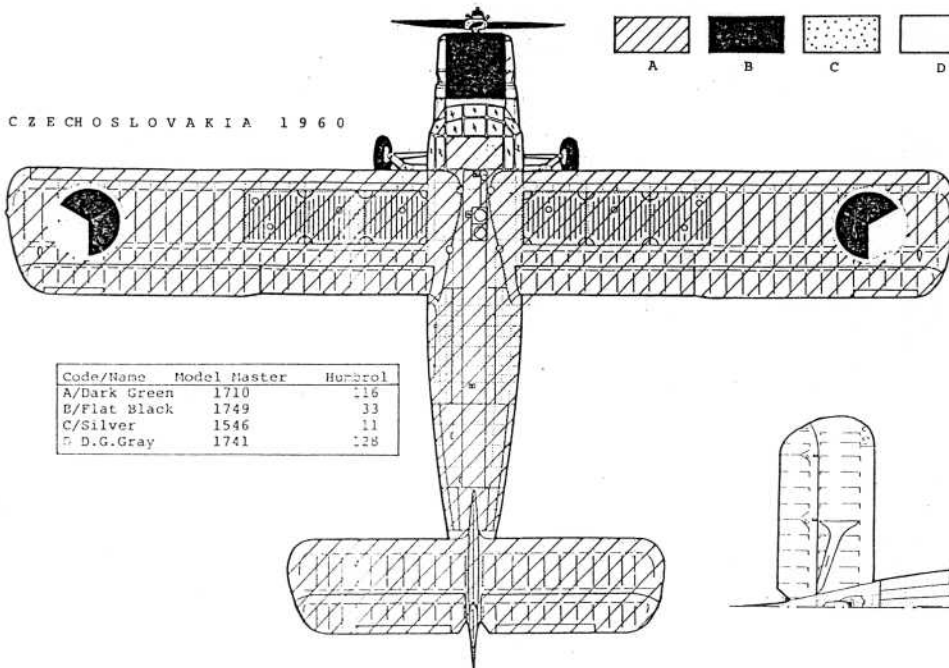
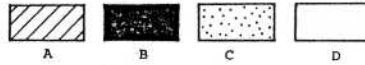
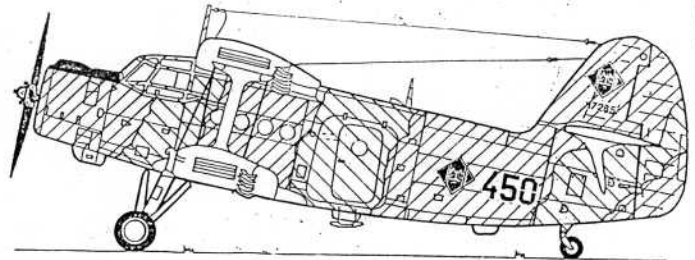
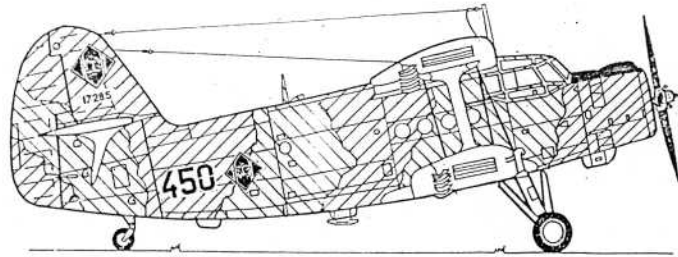
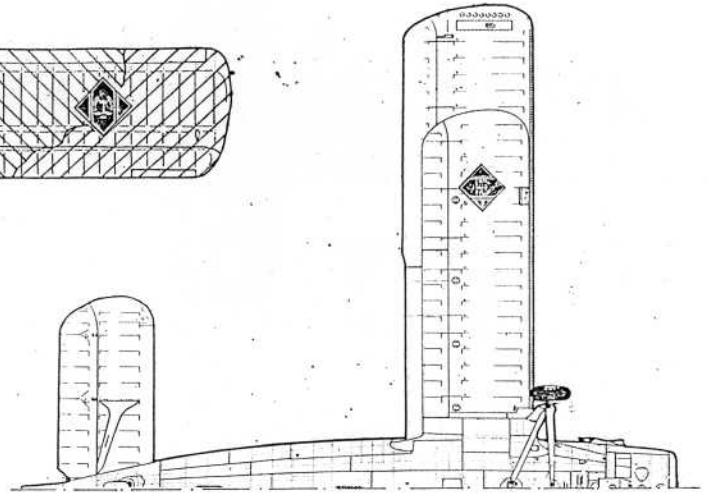


Code/Name	Model Master	Humbrol
A/Flat Black	1749	33
B/Nil.Brown	1701	186
C/D.G.Gray	1741	128
D/Silver	1546	11





Code/Name	Model Master	Humbrol
A/Flat Black	1749	33
B/Dark Green	1710	116
C/Pale Green	1716	12
D/D.G.Gray	1741	128
E/Silver	1546	11



Code/Name	Model Master	Humbrol
A/Dark Green	1710	116
B/Flat Black	1749	33
C/Silver	1546	11
D/D.G.Gray	1741	128

