

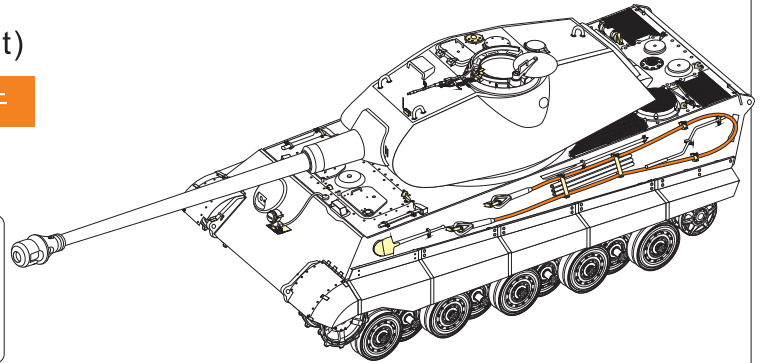
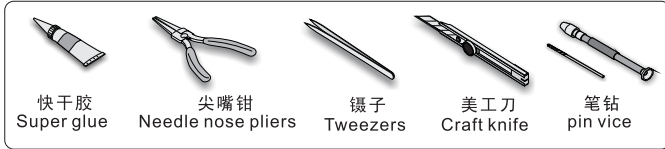
1/35 MILITARY MINIATURE VEHICLE UPGRADE SERIES PE35851

WWII German King Tiger (Porsche Turret)

二战德军虎王坦克（保时捷炮塔）改造件

[For TAKOM]

推荐使用工具 RECOMMENDED TOOLS

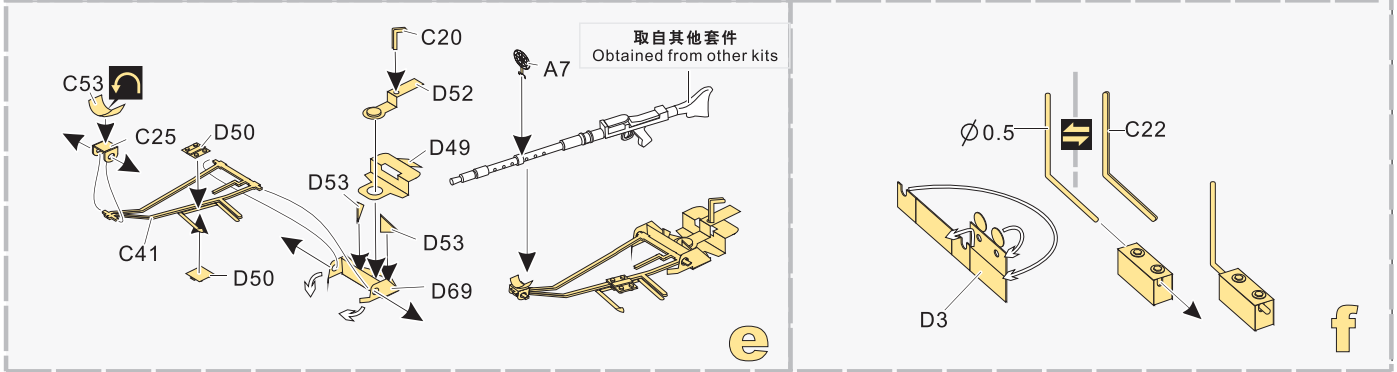
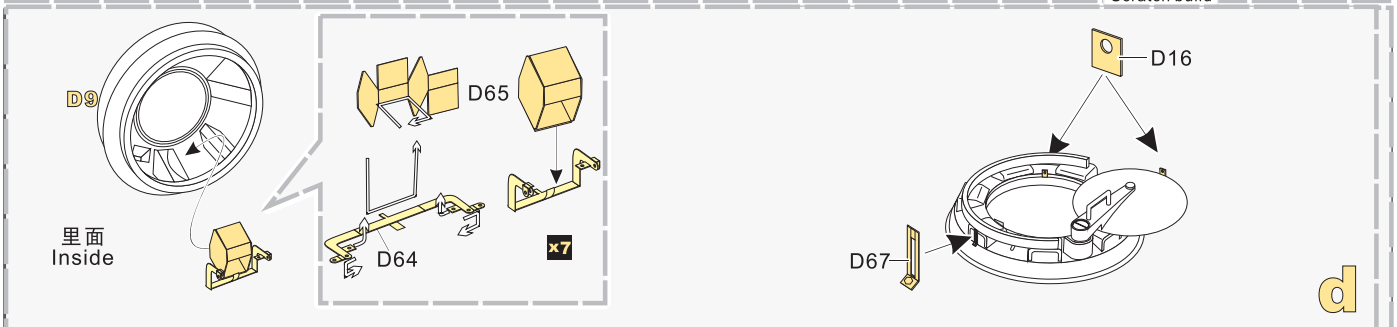
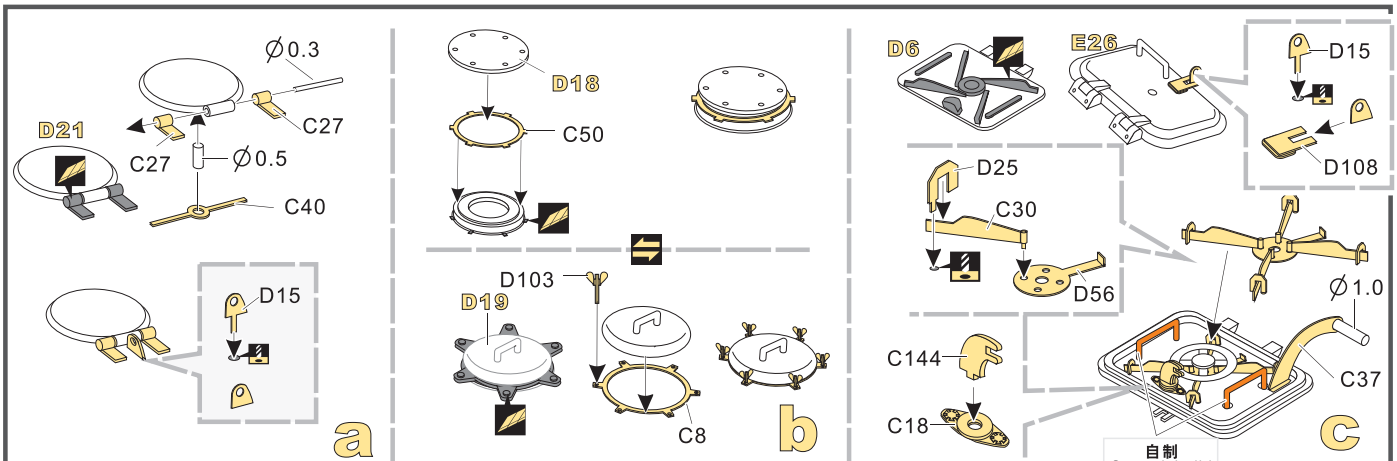


- ↑
安装
install
- ↩
折叠
bend
- A1**
改造件零件编号
PE/resin part number
- B12**
原零件编号
kit part number
- C22**
被替换的原零件编号
replaced kit part number
- ↪
弧度卷曲
radial bending
- ⚡
钻孔
drill
- ⚠
注意
caution
- ✂
切除
remove
- x2**
制作若干组
multiple assembly
- ◻
填补
fill
- ↔
选择安装
alternative
- ↔
另一侧相同制作
repeat on opposite side
- ▨
打磨
grind off

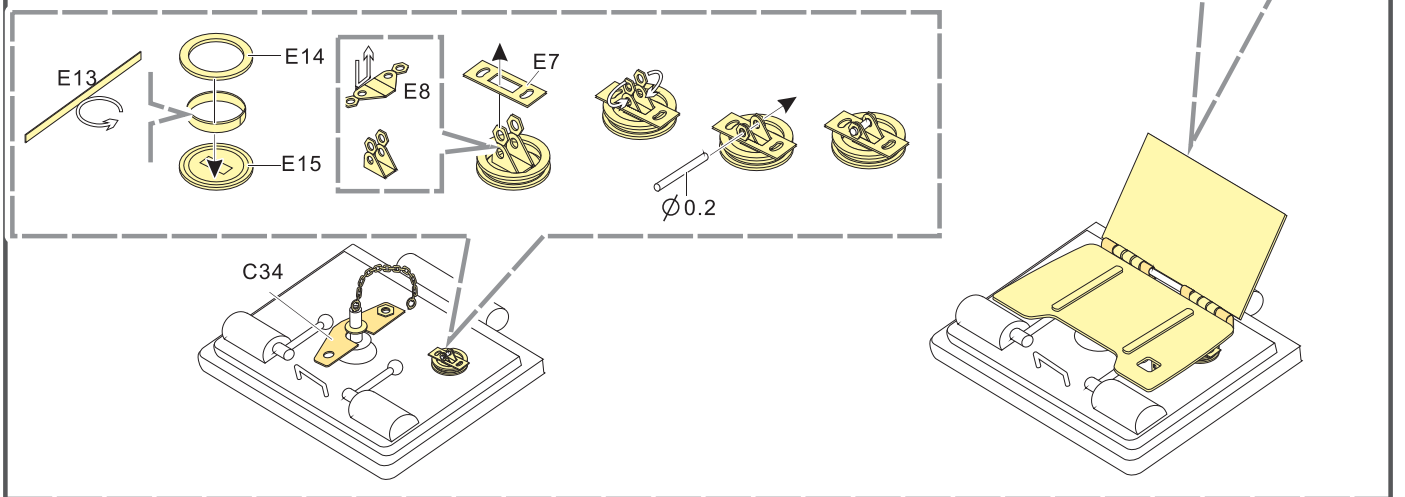
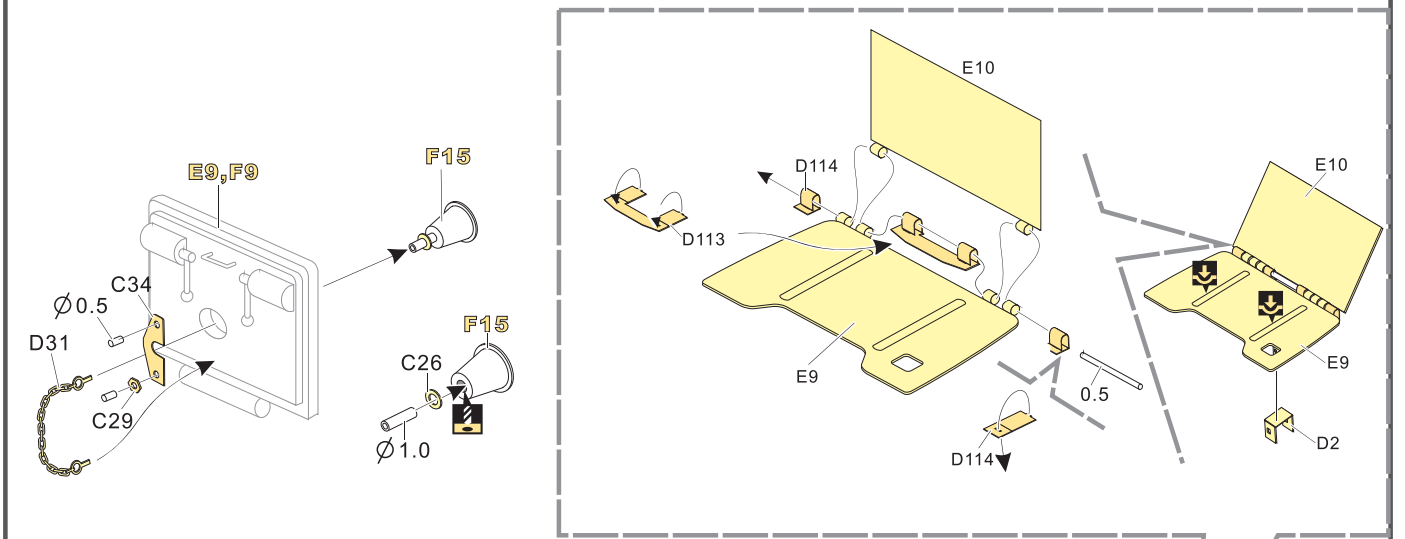
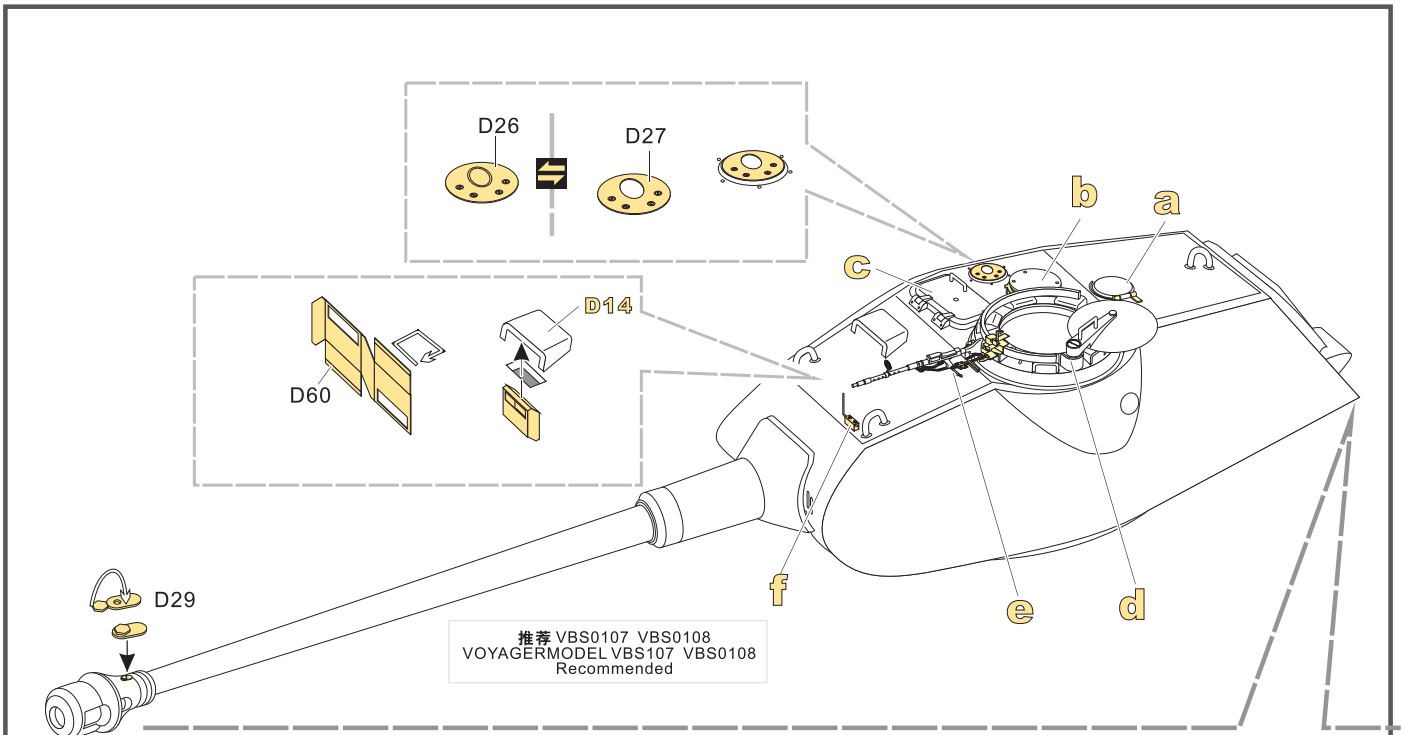
↓
用尖端在凹槽处冲压
use penpoint to press on the dent

蚀刻片零件内侧面
Put the part upside down

用笔尖在凹槽处刻
Use penpoint to press on the dent



1/35 MILITARY MINIATURE VEHICLE UPGRADE SERIES PE35851



1/35 MILITARY MINIATURE VEHICLE UPGRADE SERIES PE35851

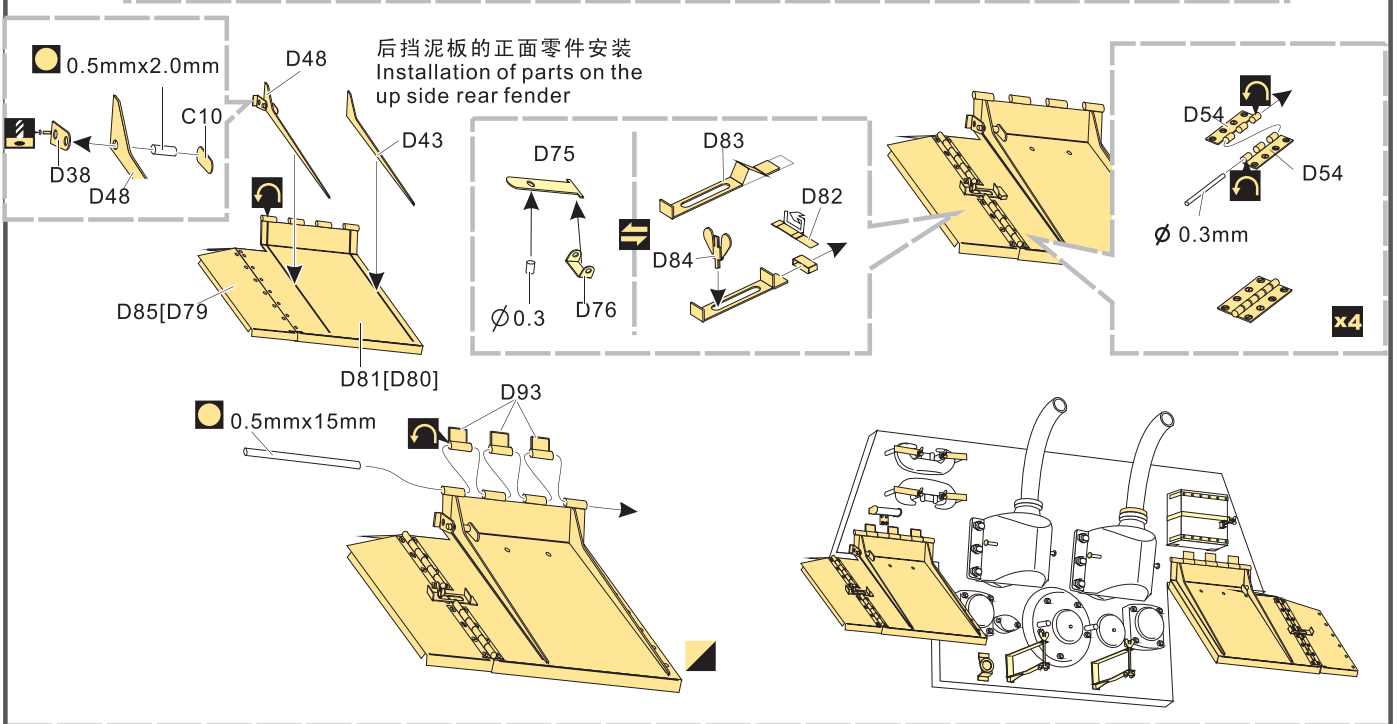
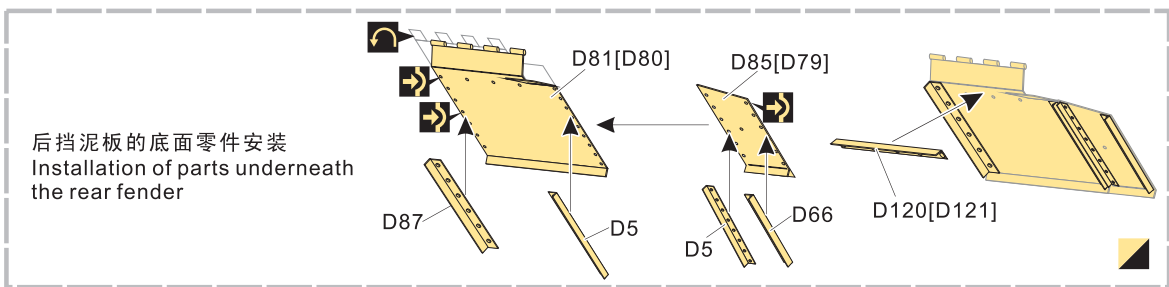
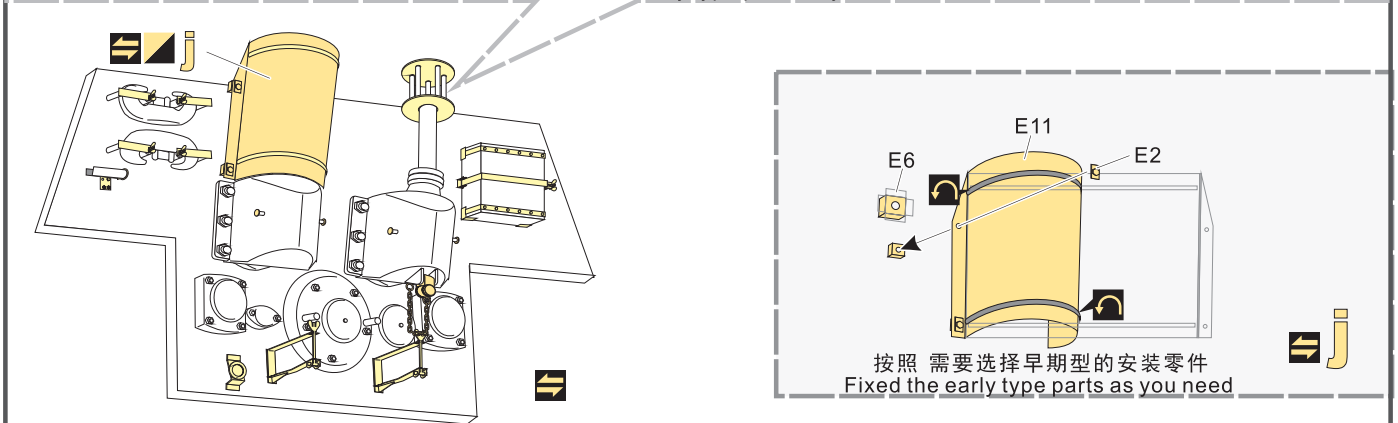
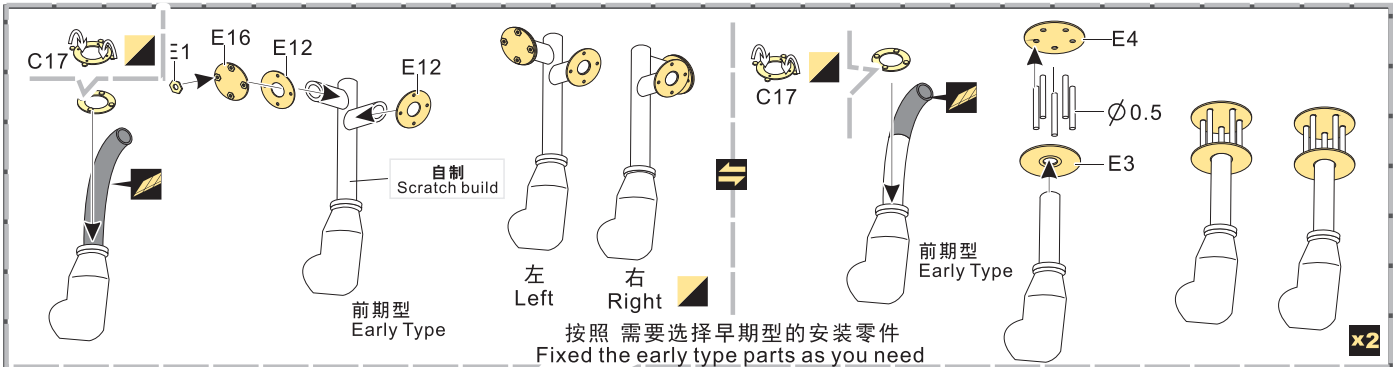
Diagram showing assembly of parts D102, D103, A33, C39, C24, C31, C17, A11, A12, D94, D4, and D13. Includes a note: **只安装于右侧 Only fitted on right**.

Diagram showing assembly of parts F1, g, h, i, C19, D8, C35, D70, D72, G12, D71, D59, D96, D91, and D91. Includes a label: **标准型 Starded type** and another label: **自制 Scratch build**.

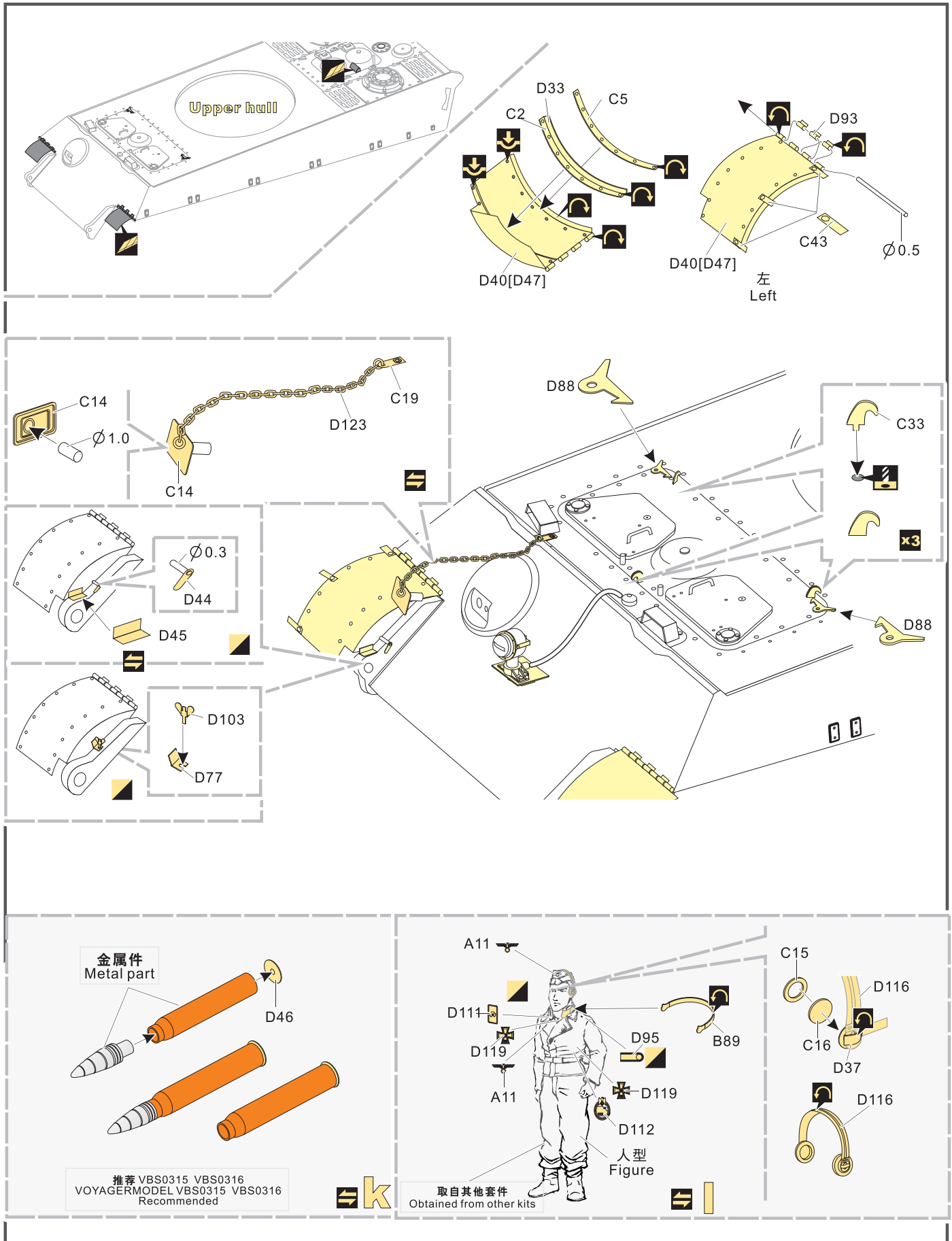
Diagram showing assembly of parts C1, C12, C7, C38, G5, G6, G21, C36, D55, G14, A10, A9, A7, and D9.



1/35 MILITARY MINIATURE VEHICLE UPGRADE SERIES PE35851



1/35 MILITARY MINIATURE VEHICLE UPGRADE SERIES PE35851



1/35 MILITARY MINIATURE VEHICLE UPGRADE SERIES PE35851

VOYAGERMODEL[®] 无微不至 极尽享受

Recommended item

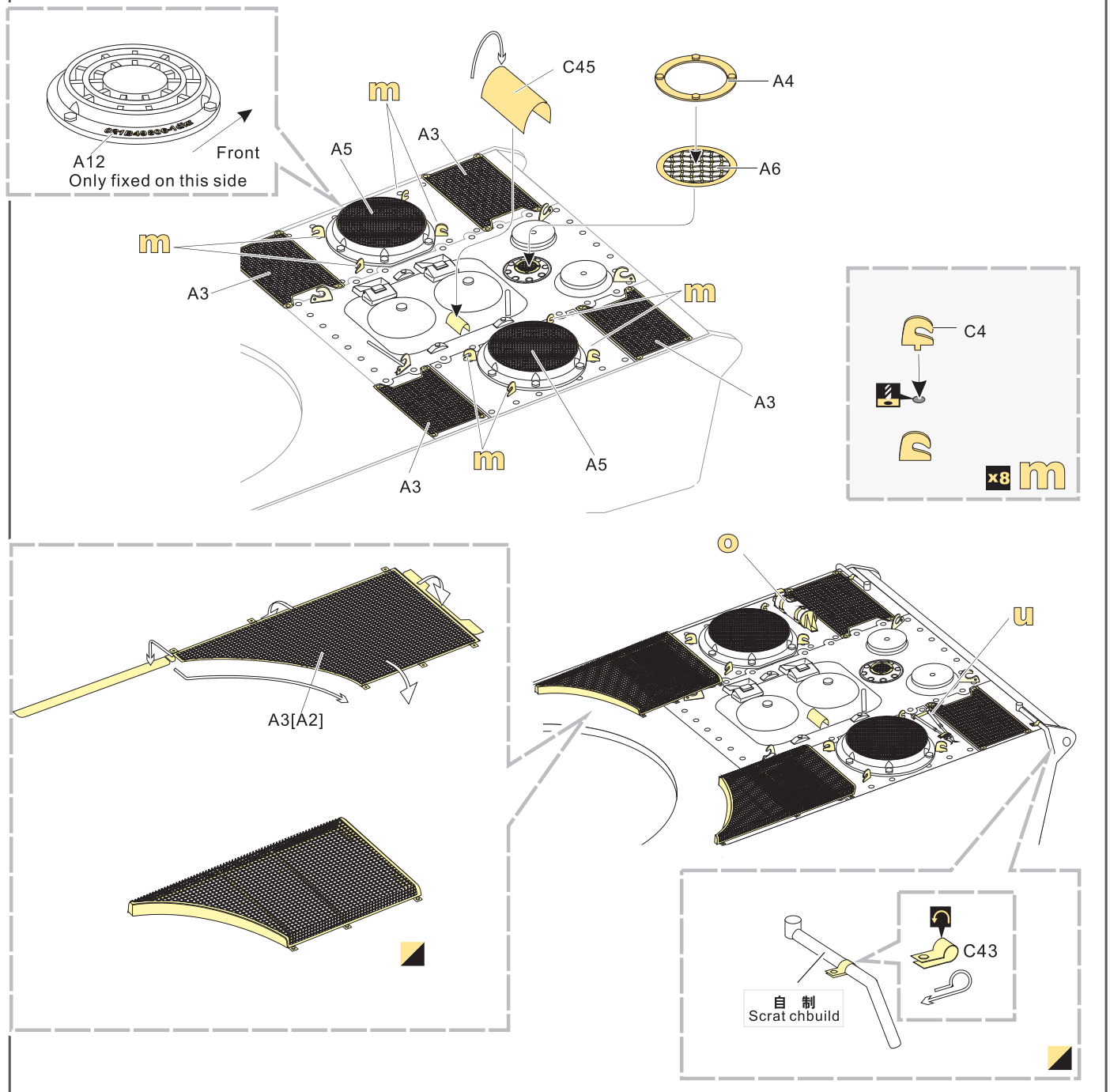
PE 35233	WWII German King Tiger (Hensehel Turret) (DRAGON)
PE 35234	WWII German King Tiger (Porsche Turret) (DRAGON)
PE 35616	WWII German Jagdtiger Basic 2.0 (Gun barrel, Machine Gun Include) (DRAGON)
PE 35697	WWII German KINGTIGER Final version (DRAGON)
PE 35743	WWII German King Tiger (Porsche Turret) (TAMIYA)
PE 35742	WWII German King Tiger (Hensehel Turret) (TAMIYA)
PE 35850	WWII German King Tiger (Hensehel Turret) (TAKOM)
PEA 396	WWII German King Tiger Schurzen (TAKOM)
VBS 0109	WWII German King Tiger Barrel (Hensehel Turret Early version)
VBS 0110	WWII German King Tiger Barrel (Hensehel Turret Late version)
VBS 0111	WWII German Tiger I Barrel (Mid/Late Version)
VBS 0112	WWII German Tiger I Barrel (Late Version)



**VOYAGER
MODEL**



更多PE35851样品照片参考请扫一扫
MORE PICTUER OF PE 35851
REFERENCE SCAN HERE



1/35 MILITARY MINIATURE VEHICLE UPGRADE SERIES PE35851

n **o** **p** **q**

r **s**

t **u** **v**

w **x**

y

自制 Scratch build

树脂件 Resin part

金属件 Metal part

铜管 Copper tube

铜缆 Copper cable

Ø0.3mm

Ø1.0

x2

1/35 MILITARY MINIATURE VEHICLE UPGRADE SERIES PE35851

